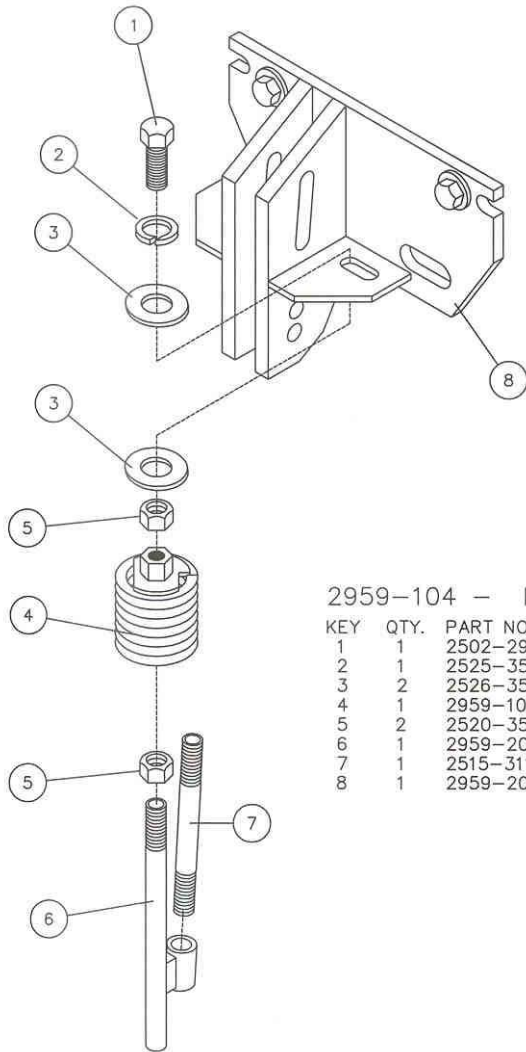


Yetter

...for land's sake

2959-104 2959 SPRING MOUNT INJ. ADD ON KIT



1690

2959-104 - FACEPLATE MOUNTED SPRING INJECTOR KIT

KEY	QTY.	PART NO.	DESCRIPTION
1	1	2502-294	1/2-13 X 1 1/2 HHCS GR. 5 ZP
2	1	2525-352	1/2 MED. LOCKWASHER ZP
3	2	2526-355	1/2 FLAT WASHER HARD'ND ZYD
4	1	2959-105	INJECTOR SPRING ASSEMBLY (6 1/2 COILS)
5	2	2520-356	1/2-13 JAM HEX NUT ZP
6	1	2959-204	INJECTOR ROD W.A., 10"
7	1	2515-311	3" NIPPLE, 1/4 NPT STAINLESS STL
8	1	2959-203	FERT. COULTER FACEPLATE W.A.(NOT INCLUDED IN 2959-104)

YETTER MANUFACTURING CO.
FOUNDED 1930

Colchester, IL 62326-0358

Toll free: 800/447-5777

309/776-3222 (Fax)

Website: www.yetterco.com

E-mail: info@yetterco.com

Yetter

ASSEMBLY INSTRUCTIONS

1. Assemble the 3" stainless steel nipple (#7) to the injector rod w.a. (#6).
NOTE: A female hose barb (not supplied) will be required. Also a straight stream nozzle 1/4 NPT male thread will be required (not supplied). Some operators also install a check valve inline so that fertilizer is not wasted.
2. Thread a 1/2" hex jam nut onto the injector rod w.a. with at least 3/4" threads showing then thread the injector spring assembly (#4) onto the injector rod. Now jam lock the injector rod to the spring assembly mount using the 1/2" jam hex nut.
3. Install the injector rod assembly to the face plate mount using a 1/2" x 1-1/2" bolt, 1/2" lockwasher, two 1/2" flat washers and jam nut (#5).
NOTE: The injector rod assembly is to be installed so that the stream nozzle is on the trailing or rear side of the injector rod.
4. If previously installed remove the injection tube holder (2959-200) from coulter arm. These parts will not be reused.
5. Tighten all hardware securely. Inspect after four hours of field operation, tightening any loose hardware.

