

Yetter
... for land's sake

2930 SERIES WITH STRAIGHT SHANK

DISC-CHISEL COULTER BRACKET KIT W/STRAIGHT SHANK

INSTALLATION AND OPERATING INSTRUCTIONS

Before assembling the brackets, mark your bar for the spacing of the coulters. Select part numbers 3010-301, 2525-451, 2520-452, 2520-394 and mount them loose on the bar as shown in the figure above. If installing a chisel or coil shank, slide it under the tool bar and bolt to bottom shank bracket with 5/8"-11 x 3-1/4" bolt (2502-385) and 5/8" nuts and washers as shown. Align the brackets on the marks on the tool bar and tighten. (Be sure brackets remain square with the bar to assure shank will be straight when installing.)

Install u-bolts (3010-304) into shank brackets using the 1/2" flat washer, lock washers, and nuts. (Leave the u-bolts loose to allow straight shank to go through the u-bolts.) Drive roll pin (2530-208) into one end of the straight shank (3010-303) until it is centered in the shank. Drop the shank down through the top of the u-bolts until the roll pin is resting on the top u-bolt. Set the shank at the proper depth and tighten the 1/2" nuts on the u-bolts. An additional roll pin is supplied for the bottom hole in the shank AFTER the coulter is installed.

PERIODICALLY CHECK ALL NUTS TO BE SURE THEY ARE TIGHT.

YETTER MANUFACTURING CO.

FOUNDED 1930

Colchester, IL 62326-0358

Toll free: 800/447-5777

309/776-3222 (Fax)

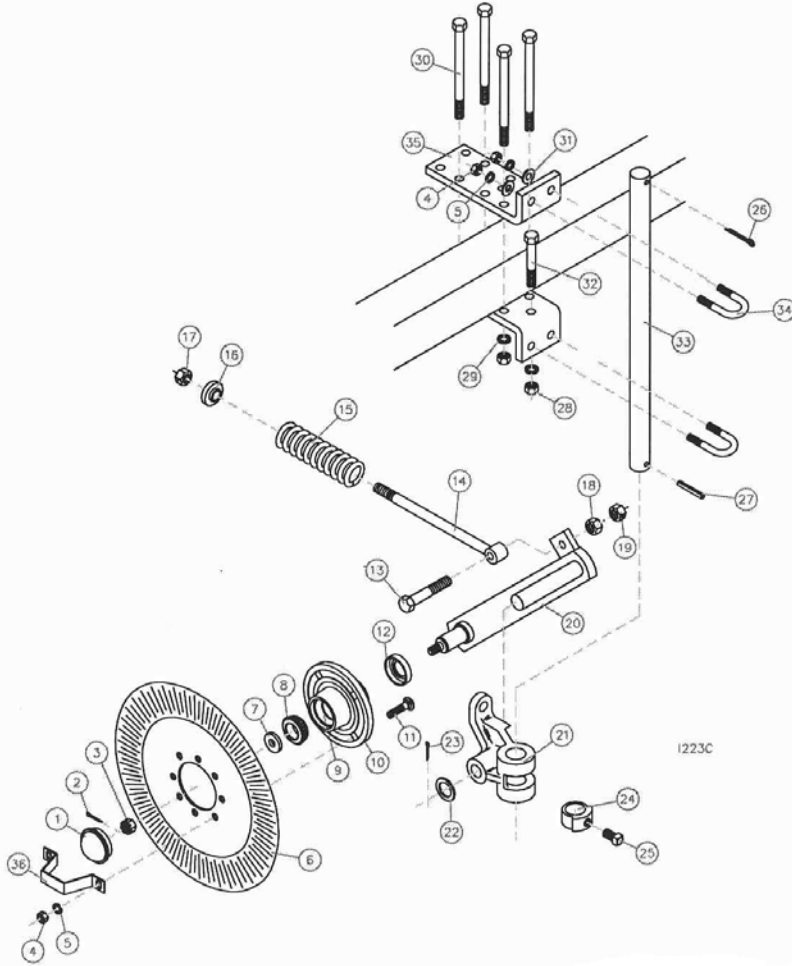
Website: www.yetterco.com

E-mail: info@yetterco.com

2565-185 ☐ 03/08 ☐ Great River Printing, Hamilton, IL

Yetter

2930 SERIES WITH STRAIGHT SHANK



2930-020/2931-020 20" SPRING CUSHION DISC CHISEL COULTER

Key	Qty	Part No.	Description
1	1	2570-375	HUB CAP
2	1	2531-102	1/8 X 1 1/4 COTTER PIN BLACK
3	1	2520-469	5/8-11 SLOTTED HEX NUT, BLACK
4	8	2520-352	1/2-13 HEX NUT ZP
5	8	2525-352	1/2 MED LOCKWASHER ZP
6	1	2571-166	.157 X 20" MULTI HOLE FLUTED
7	1	2526-449	5/8 FLATWASHER, 1/4 ±.010 THK
8	2	2550-027	CONE, LM6704B
9	2	2550-029	CUP (PRE-ASSEM. W/ NO. 10)
10	1	2900-102	HUB SUB-ASSEMBLY
11	4	2505-339	1/2-13 X 1 1/2 CAR BLT GR 5 ZP
12	1	2550-066	TRIPLE LIP SEAL, NIT #1B12-4
13	1	2502-410	3/4-16 X 3" HHCS GR 5 ZP
14	1	2570-125	PRESSURE ROD, 9 3/8" EYEBOLT
15	1	2550-708	7/16 WIRE 2 1/8 OD X 1 1/4 ID X 7 1/4 C SPRING
16	1	2555-112	2910 SPRING BUSHING CASTING
17	1	2520-515	3/4-10 LOCK HEX NUT ZP
18	1	2520-508	3/4-16 HEX NUT ZP
19	1	2520-511	3/4-16 LOCK HEX NUT ZP
20	1	2910-201	COULTER ARM W.A.
21	1	2910-320	PIVOT CASTING ASS'Y
22	1	2526-561	1 11/64ID X 1 7/8OD X 14GA MB BL
23	1	2531-125	1/4 X 1 3/4 COTTER PIN ZP
24	1	2910-301	LOCKING COLLAR PLOW COULTER
25	1	2503-379	5/8-11 X 1 SO HCPSS GR 5 ZP
26	1	2531-161	5/16 X 2 1/2 COTTER PIN ZP
27	1	2530-208	3/8 X 2 1/2 ROLL PIN ZP
28	5	2520-452	5/8-11 HEX NUT ZP
29	5	2525-451	5/8" MED. LOCKWASHER ZP
30	4	2502-394	5/8-11 X 8" HHCS GR. 5 ZP
31	4	2502-348	5/8-11 X 11" HHCS GR. 5 ZP
32	1	2526-351	1/2" STD. FLATWASHER ZP
33	1	2502-385	5/8-11 X 3-1/4" HHCS GR. 5 ZP
34	2	3010-303	STRAIGHT COULTER SHANK
35	2	3010-304	SHANK U-BOLT ZP
36	1	3010-301	SHANK BRACKET
		3010-306	SHANK BRACKET, 5X7 OR 7X7 BAR
		2987-301	HUB CAP RETAINER

UPDATED 03/18/08