

Yetter

FARM EQUIPMENT



3650 / 3660 / 3666 ROTARY HOE PARTS MANUAL 2565-XXX • 04/2019

YETTER MANUFACTURING CO.
FOUNDED 1930

Colchester, IL 62326-0358
Toll free: 800/447-5777
309/776-3222 (Fax)
Website: www.yetterco.com
E-mail: info@yetterco.com

YETTER



FOREWORD

You've just joined an exclusive but rapidly growing club.

For our part, we want to welcome you to the group and thank you for buying a Yetter product.

We hope your new Yetter products will help you achieve both goals-increase your productivity and increase your efficiency so that you may generate more profit.

This operator's manual has been designed into four major sections: Foreword, Safety Precautions, Installation Instructions and Parts Breakdown.



This **SAFETY ALERT SYMBOL** indicates important safety messages in the manual. When you see this symbol, be alert to the possibility of **PERSONAL INJURY** and carefully read the message that follows.

The word **NOTE** is used to convey information that is out of context with the manual text. It contains special information such as specifications, techniques and reference information of a supplementary nature.

The word **IMPORTANT** is used in the text when immediate damage will occur to the machine due to improper technique or operation.

Important will apply to the same information as specified by note only of an immediate and urgent nature.

It is the responsibility of the user to read the operator's manual and comply with the safe and correct operating procedure and to lubricate and maintain the product according to the maintenance schedule in the operator's manual.

The user is responsible for inspecting his machine and for having parts repaired or replaced when continued use of the product would cause damage or excessive wear to the other parts.

It is the user's responsibility to deliver his machine to the Yetter dealer who sold him the product for service or replacement of defective parts, which are covered by the warranty policy.

If you are unable to understand or follow the instructions provided in this publication, consult your local Yetter dealer or contact:

YETTER MANUFACTURING CO.

309/776-4111

800/447-5777

309/776-3222 (FAX)

Website: www.yetterco.com

E-mail: info@yetterco.com

WARRANTY

Yetter Manufacturing warrants all products manufactured and sold by it against defects in material. This warranty being expressly limited to replacement at the factory of such parts or products as shall appear to be defective after inspection. This warranty does not obligate the Company to bear cost of labor in replacement of parts. It is the policy of the Company to make improvements without incurring obligations to add them to any unit already sold. No warranty is made or authorized to be made, other than herein set forth. This warranty is in effect for one year after purchase.

DEALER: _____

Yetter Manufacturing warrants its own products only and cannot be responsible for damages to equipment on which mounted.



ILLUSTRATED PARTS LIST

Yetter 3650, 3660, 3660 Rotary Hoe

This form must be filled out by the dealer and signed by both the dealer and the customer at the time of delivery.

Customer Name				
Address				
City		State		Zip
Phone				
Dealer Name				
Address				
City		State		Zip
Model Number				
Serial Number				
Delivery Date				

DEALER INSPECTION REPORT

- All Fasteners Tight
- Wheel Bolts Torqued
- Hydraulic Hoses and Fittings Free and Tight
- Fertilizer Hoses and Fittings Free and Tight
- Wheel Drive Turns Freely
- Lubricate Machine
- Check Tire Pressure
- Frame and Wings Level
- Monitors and Controllers Function
- Wiring Harness Connected

I have thoroughly instructed the buyer on the above described equipment which review included the Operator's Manual content, equipment care, adjustments, safe operation and applicable warranty policy.

Date _____

Dealer's Rep. Signature _____

SAFETY

- Safety Chain Installed
- All Guards Installed
- All Safety Signs Installed
- Reflectors, SMV and Lights Clean
- Review Operating and Safety Instructions

The above equipment and Operator's Manual have been received by me and I have been thoroughly instructed as to care, adjustments, safe operation and applicable warranty policy.

Date _____

Owner's Signature _____

General Information

All rights, especially copying and distribution rights are reserved. No part of this publication may be reproduced in any form or by any means, electronic or mechanical, including photocopying, without express written permission from FAST AG Solutions.

Parts information in this manual represents components installed when product was manufactured based upon the best available information. Modifications made subsequent to initial delivery are not included. Always verify the parts and color required when ordering parts.

If you have any questions, please contact your FAST AG Solutions Parts and Service Department.

Explanation of Parts Lists

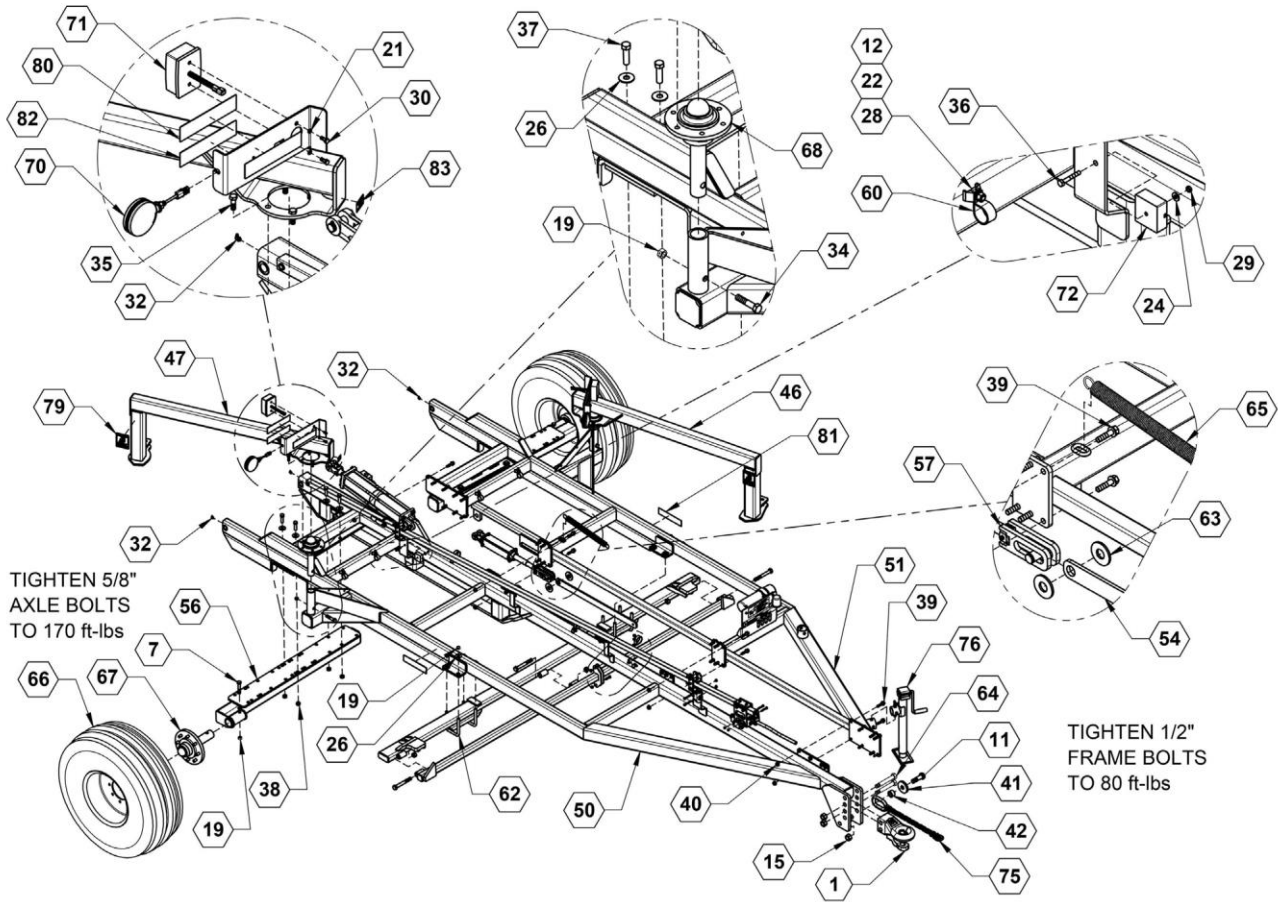
The parts lists are broken down sub assemblies and listed in 4 columns:

- ITEM - These numbers are found on the illustration associated with the parts list.
 - NS- This item is NOT SHOWN, included for reference.
- QTY. - This is the quantity of parts needed in an assembly.
 - AR- The quantity of this item is AS REQUIRED for the location.
- PART NO.- These are the part numbers associated to the ITEM.
- DESCRIPTION - This is the description of the part.

Table of Contents

Section	Page
Table of Contents	4
Base Rotary Hoe Assembly	5-14
Bare Base Toolbar Assembly	15
Base Toolbar Assembly	17-19
LH Wing Wheel Assembly	21
RH Wing Wheel Assembly	23
50' Toolbar	25
60' Toolbar	27
66' Toolbar	29
Bump Adjust Assembly	31
Row Depth Adjust Assembly	33
Slide Pivot Assembly	35
Hub and Spindle Assembly (N709) 730106	37
Hub and Spindle Assembly (N45-8) 730008	39
Rotary Hoe Wheel Axle Assembly	41
Hydraulic Assembly	43
Center Cylinder Hoses	45
Field Latch Hoses	47
Hydraulic Fitting Locations	49
Wing Fold Hoses	51

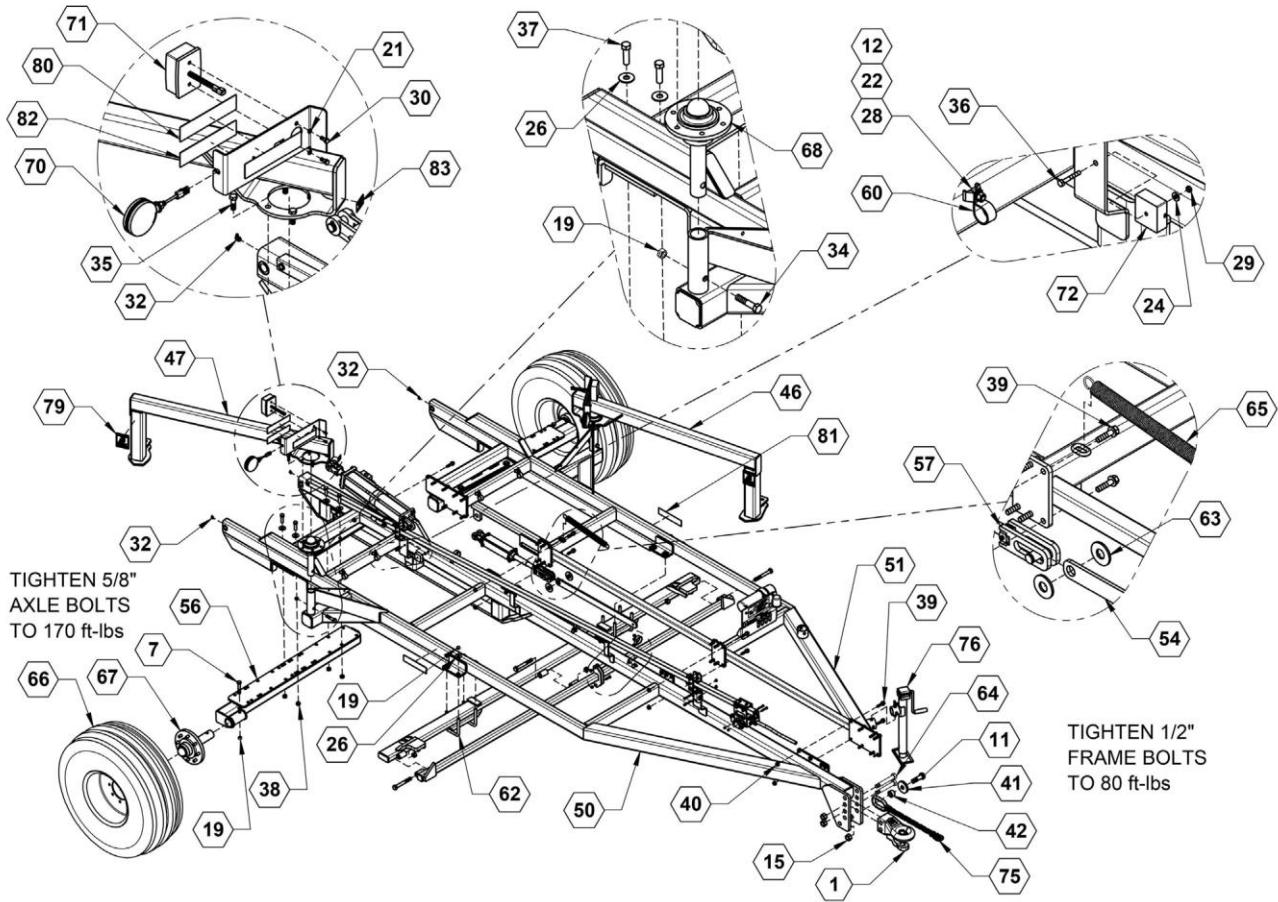
Base Rotary Hoe Assembly



Base Rotary Hoe Assembly Parts List

ITEM	PART NO.	QTY.	DESCRIPTION
1	90SAHITCLG	1	HITCH, LARGE CAT4
11	201	1	BOLT, HH 1-8 X 3 1/2 GR5 ZINC
12	213	11	NUT, HEX 3/8-16ZINC
15	234	3	NUT, HEX NYLOCK 1-8ZINC
19	240	12	NUT, CENTERLOCK, 5/8-11, ZINC
21	248	4	WASHER, LOCK, 1/4 ZINC
22	250	11	LOCKWASHER, 3/8 ZINC
24	256	5	WASHER, FLAT, 1/4 ZINC
26	261	16	WASHER, FLAT, 5/8 ZINC
28	592	11	BOLT, CARRIAGE 3/8-16 X 1 ZINC
29	622	1	NUT, TOPLOCK 1/4-20ZINC
30	737	4	BOLT, HH 8-1.25 X 20MM 8.8 ZINC
32	761	3	ZERK, 90~, 1/4-28 STRAIGHT PIPE THREAD
34	812	2	BOLT, HH 5/8-11 X 3 GR8 ZINC
35	813	8	BOLT, 1/2-20 UNF X 1-1/2 GR5 ZINC
36	814	3	BOLT, 1/4 X 1-3/4 GR5 ZINC
37	815	8	BOLT, HH 5/8-11 X 2-1/4 GR8 ZINC
38	817	8	NUT, CENTERLOCK, 5/8-11, GR8 ZINC
39	819	28	HHCS, FLANGED 1/2 X 2 G8 ZINC
40	820	28	NUT, FLANGED LOCK, 1/2-13 G8 ZINC
41	15829	1	WASHER PLATE, SAFETY CHAIN

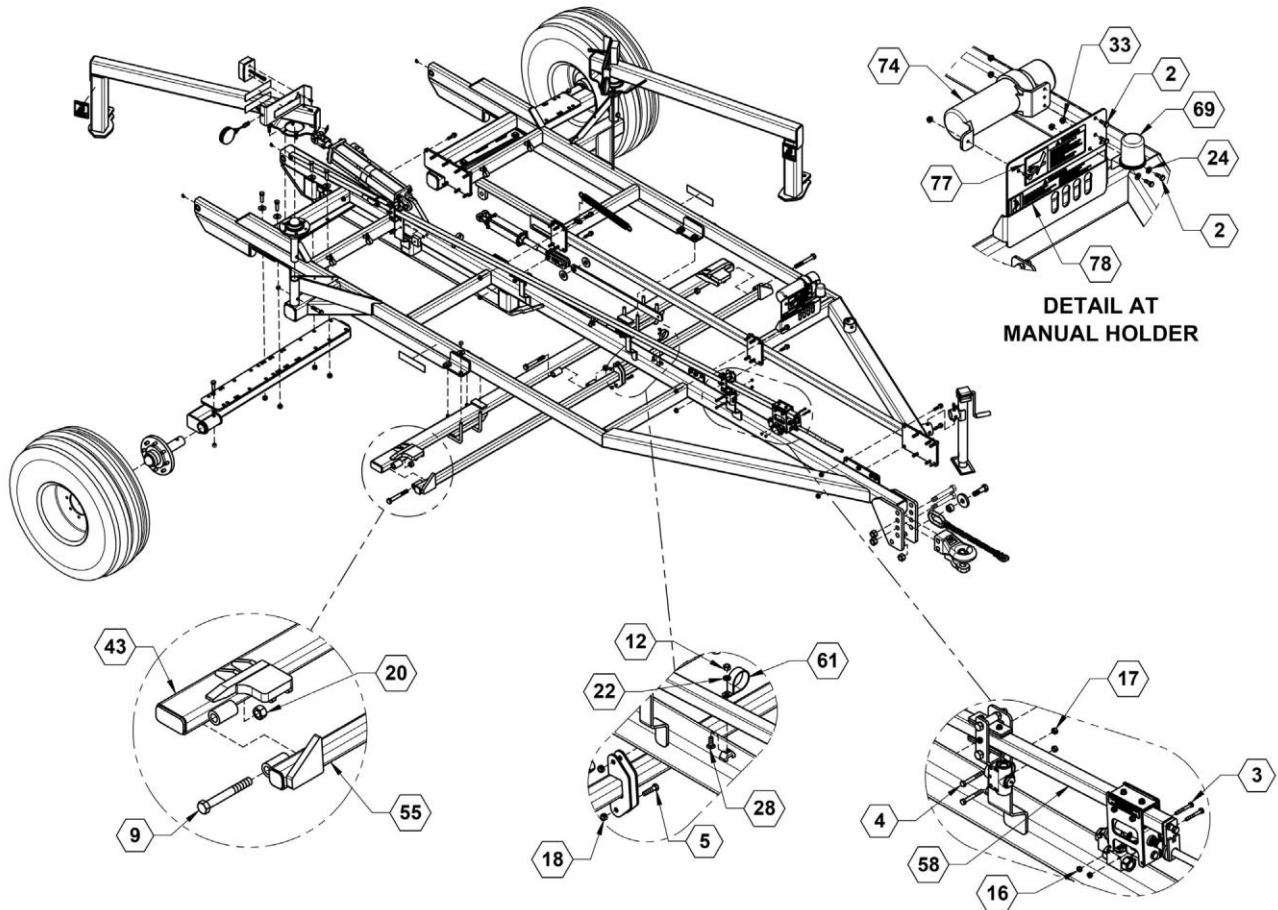
Base Rotary Hoe Assembly



Base Rotary Hoe Assembly Parts List

ITEM	PART NO.	QTY.	DESCRIPTION
42	15835	1	BUSHING, SAFETY CHAIN SPACER
46	27928	1	WLDMNT, LH FOLDARM
47	27929	1	WLDMNT, RH FOLDARM
50	28031	1	WLDMNT, RH FRAME
51	28032	1	WLDMNT, LH FRAME
54	28051	1	PLATE, 3/8" FIELD LATCH
56	28070	2	WLDMNT, FRONT AXLE
57	28073	1	ASSY, ROTARY HOE HYDRAULICS
62	590062	4	U-BOLT, 4 X 6 X 5/8 SQ. BEND, ZINC
63	590146	2	WASHER, FLAT 1" ZINC
64	590153	2	BOLT, HH 1-8 X 6 -3/4 X 1-1/4 THD GR5 ZINC
65	590834	1	SPRING, CENTURY SPRING 4075
66	700208	2	WHEEL, TITAN 14L 16.1 SL, 8 BOLT RIM
67	730008	2	HUB & SPINDLE ASM, 8 BOLT
70	740024	2	LIGHT, AMBER WARNING
71	740025	2	TAIL LIGHT, RED
72	740031	1	LIGHT MODULE
75	790049	1	SAFETY CHAIN, 20,000LB
76	790051	1	JACK, 5000 LB SIDE WIND
79	800105	2	DECAL, WARNING-STAND CLEAR
80	800109	2	DECAL, RED REFLECTOR
81	800110	4	DECAL, AMBER REFLECTOR
82	800111	2	DECAL, ORANGE REFLECTOR
83	800287	7	DECAL, GREASE PIVOT POINTS

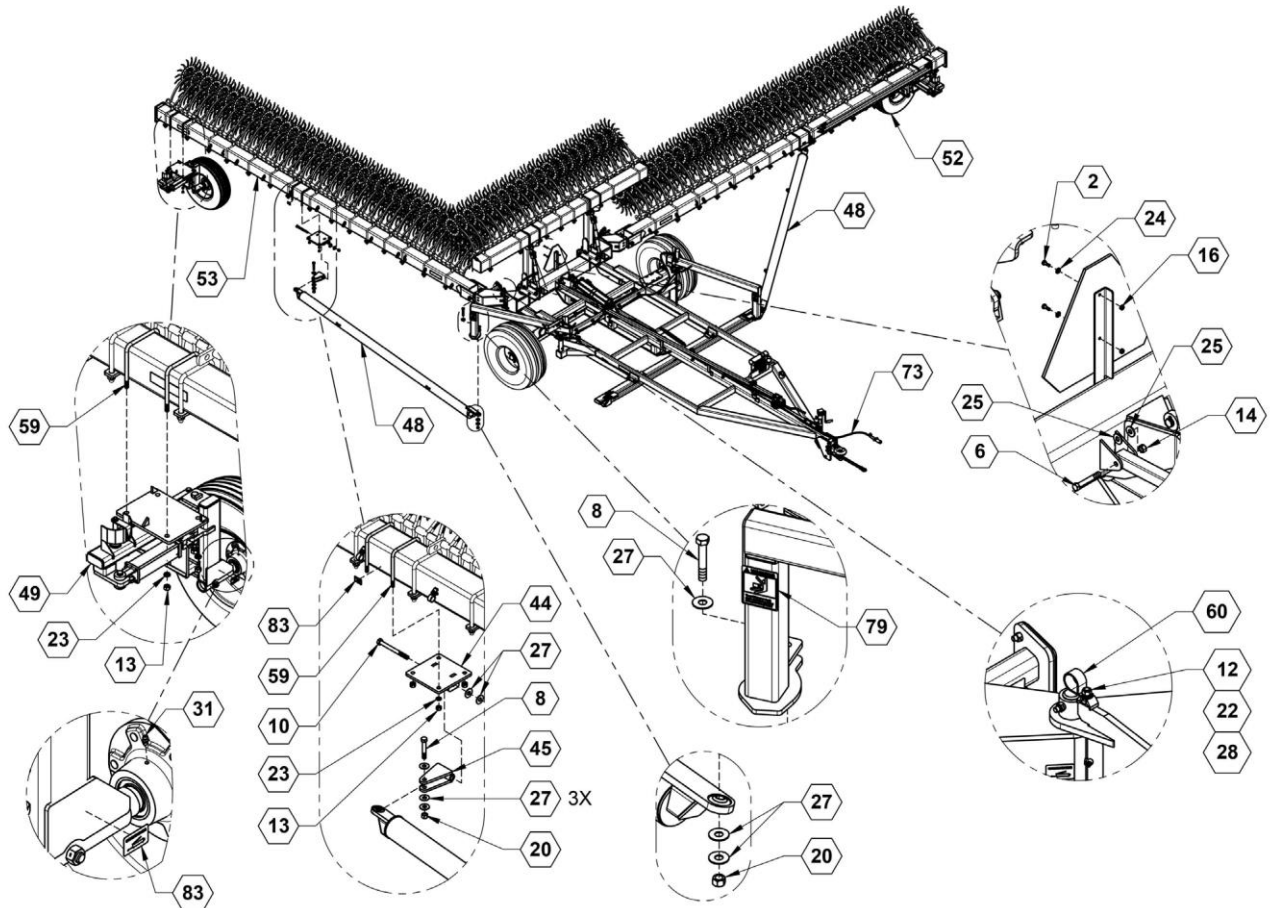
Base Rotary Hoe Assembly



Base Rotary Hoe Assembly Parts List

ITEM	PART NO.	QTY.	DESCRIPTION
2	101	7	BOLT, HH 1/4-20 X 3/4 GR5 ZINC
3	104	4	BOLT, HH 1/4-20 X 2 GR5 ZINC
4	118	2	BOLT, HH 5/16-18 X 2-1/2 GR5 ZINC
5	129	2	BOLT, HH 3/8-16 X 1-1/2 GR5 ZINC
9	192	3	BOLT HH 3/4-10 X 6 GR5 ZINC
12	213	11	NUT, HEX 3/8-16 ZINC
16	235	6	NUT, CENTERLOCK, 1/4-20 GR5 ZINC
17	236	2	NUT, CENTERLOCK, 5/16-18 GR5 ZINC
18	237	2	NUT, CENTERLOCK 3/8-16 ZINC
20	241	9	NUT, CENTERLOCK, 3/4-10 GR5 ZINC
22	250	11	LOCKWASHER, 3/8 ZINC
24	256	5	WASHER, FLAT, 1/4 ZINC
28	592	11	BOLT, CARRIAGE 3/8-16 X 1 ZINC
43	27490	1	WLDMNT, FIELD LOCK
55	28065	1	WLDMNT, FIELD LOCK PIVOT
58	28090	1	ASSY, DEPTH ADJUSTMENT
61	540051	5	P-CLAMP, 2" W/3/8" HOLE
69	740018	1	LIGHT HARNESS HOLDER
74	750048	1	MANUAL HOLDER
77	800098	1	DECAL, WARNING-HYDRAULIC FLUID

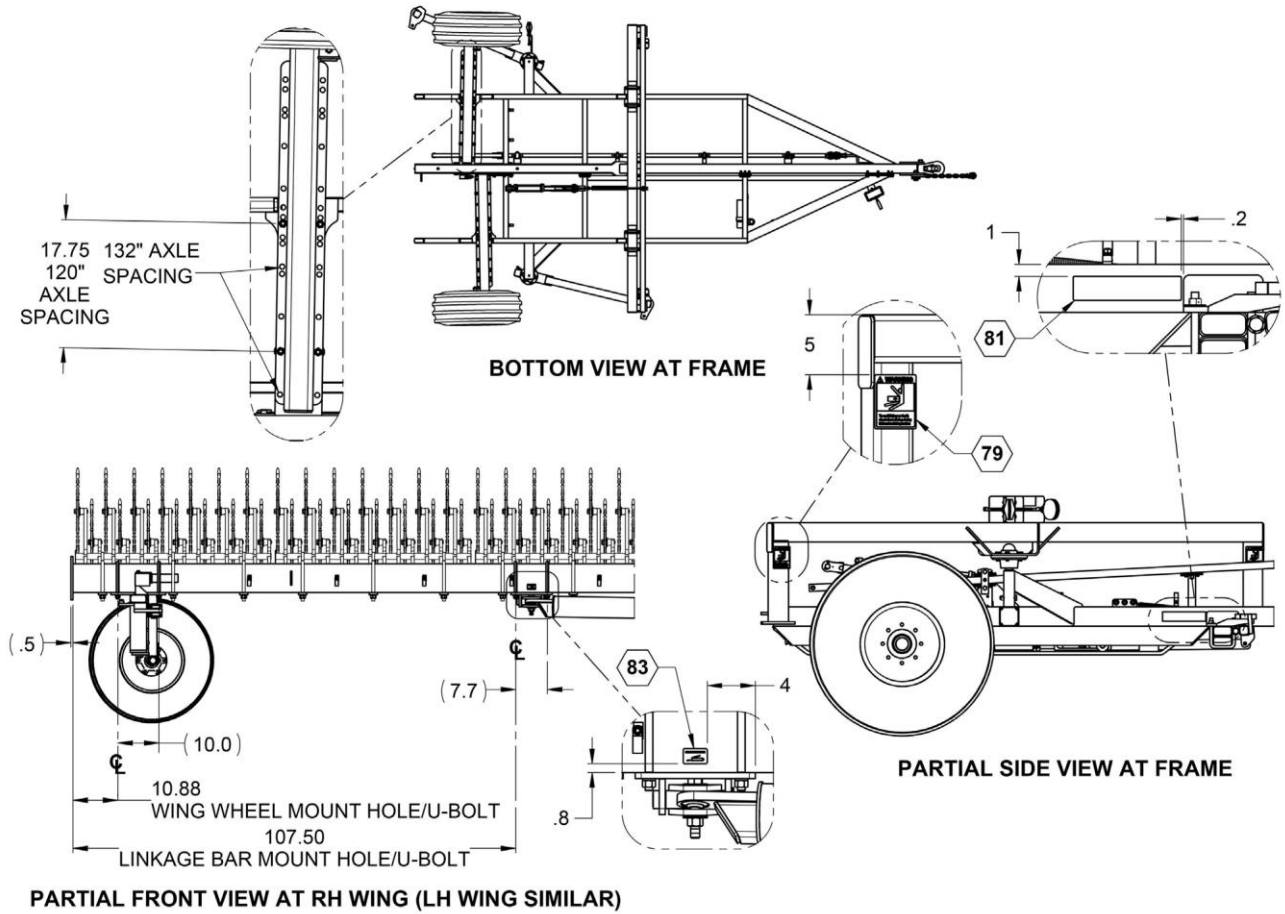
Base Rotary Hoe Assembly



Base Rotary Hoe Assembly Parts List

ITEM	PART NO.	QTY.	DESCRIPTION
2	101	7	BOLT, HH 1/4-20 X 3/4 GR5 ZINC
6	157	1	BOLT, HH 1/2-13 X 3-1/2 GR5 ZINC
8	189	4	BOLT, HH 3/4-10 X 4 1/2 GR5 ZINC
10	196	2	BOLT, 3/4-10 X 8 GR5 ZINC
12	213	11	NUT, HEX 3/8-16 ZINC
13	216	16	NUT, HEX 5/8-11, ZINC
14	231	1	NUT, HEX NYLOCK 1/2-13 ZINC
16	235	6	NUT, CENTERLOCK, 1/4-20 GR5 ZINC
20	241	9	NUT, CENTERLOCK, 3/4-10 GR5 ZINC
22	250	11	LOCKWASHER, 3/8 ZINC
23	253	16	LOCKWASHER, 5/8" ZINC
24	256	5	WASHER, FLAT, 1/4 ZINC
25	260	2	WASHER, FLAT, 1/2 ZINC
27	262	16	WASHER, FLAT 3/4 ZINC
28	592	11	BOLT, CARRIAGE 3/8-16 X 1 ZINC
31	759	6	ZERK, 1/4-28 STRAIGHT PIPE THREAD
44	27506	2	WLDMNT, LINKAGE MOUNT
45	27510	2	WLDMNT, LINKAGE SWING
48	28007	2	WLDMNT, LINKAGE BAR
49	28020	1	ASSY, RH WING WHEEL
52	28035	1	ASSY, LH WING WHEEL
53	28046	1	ASSY, BASE TOOLBAR
59	530172	8	U-BOLT, 7 X 7 X 5/8, ZINC
60	540035	6	P-CLAMP, 1-1/4"
73	740047	1	HARNESS, TAILLIGHT
79	800105	2	DECAL, WARNING-STAND CLEAR
83	800287	7	DECAL, GREASE PIVOT POINTS

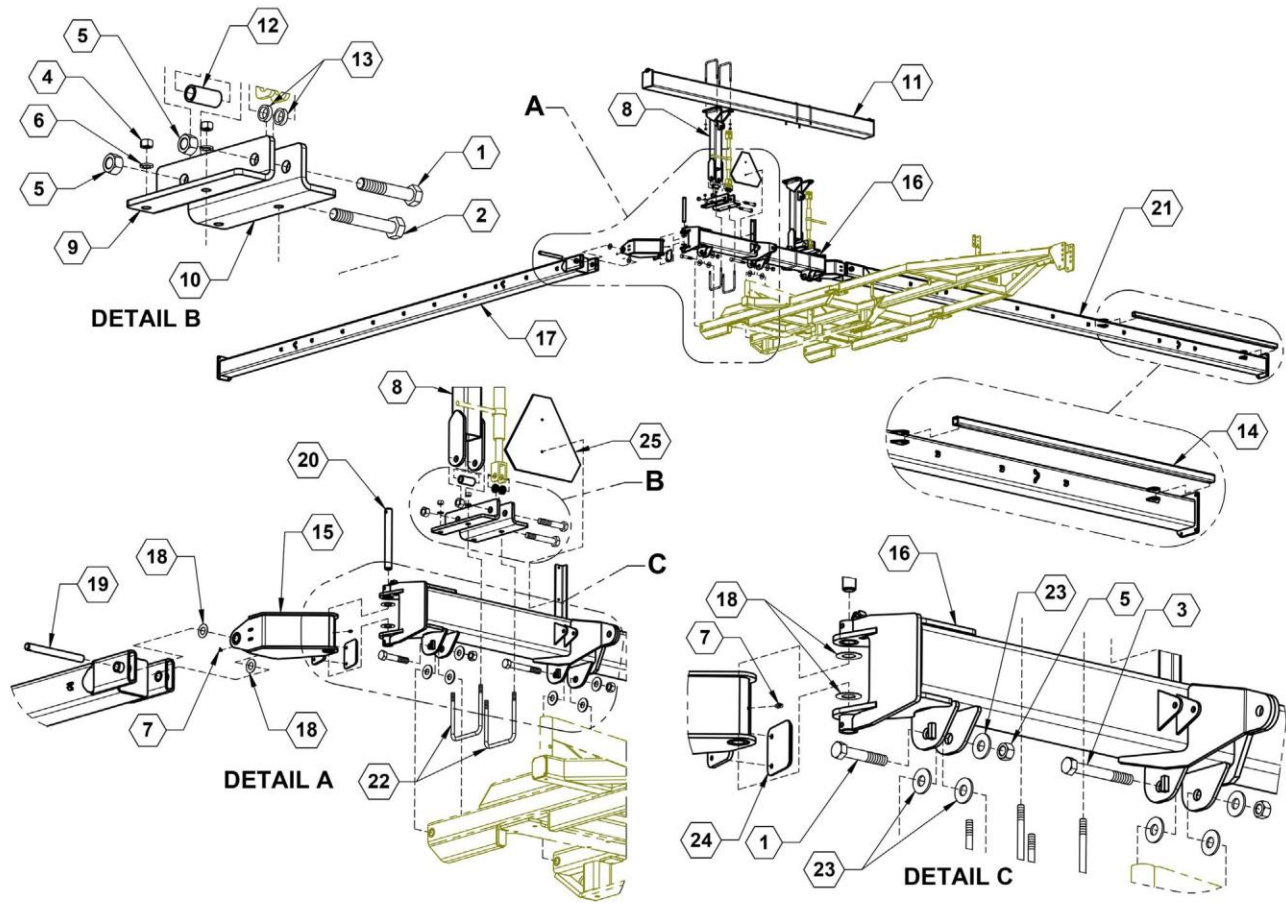
Base Rotary Hoe Assembly



Base Rotary Hoe Assembly Parts List

ITEM	PART NO.	QTY.	DESCRIPTION
79	800105	2	DECAL, WARNING-STAND CLEAR
81	800110	4	DECAL, AMBER REFLECTOR
83	800287	7	DECAL, GREASE PIVOT POINTS

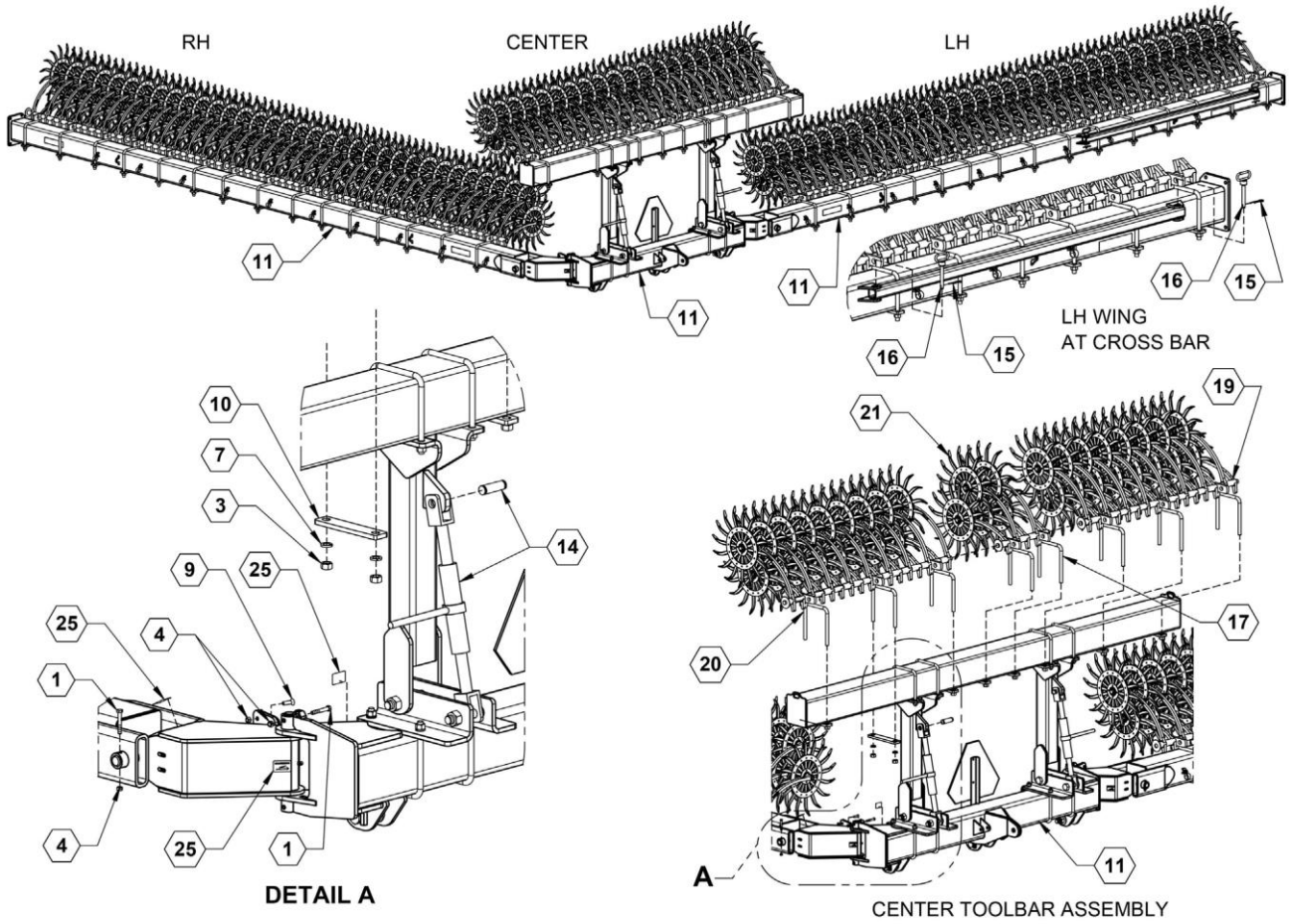
Bare Base Toolbar Assembly



Bare Base Toolbar Assembly Parts List

ITEM	PART NO.	QTY.	DESCRIPTION
1	205	4	BOLT, HEX 1-8X5-1/2 GR5 ZINC
2	207	2	BOLT, HH 1-8 X 6-1/2 G5 ZINC
3	209	1	BOLT, HH 1-8X7-1/2 GR5 ZINC
4	216	16	NUT, HEX 5/8-11, ZINC
5	242	7	NUT, CENTERLOCK, 1-8 ZINC
6	253	16	LOCKWASHER, 5/8" ZINC
7	761	4	ZERK, 90 DEG, 1/4-28 STRAIGHT PIPE THREAD
8	27470	2	CENTER LIFTARM, WLDMNT
9	27477	2	PLATE, CENTER LIFTARM MNT LH
10	27478	2	PLATE, CENTER LIFTARM MNT RH
11	27480	1	CENTER GANGBAR, WLDMNT
12	27537	2	BUSHING, LONG SPACER
13	27538	4	BUSHING, SHORT SPACER
14	27959	1	TUBE, CROSS BAR
15	27999	2	FLEX JOINT WLDMNT
16	28002	1	CENTER TOOLBAR WLDMT
17	28024	1	RH MAIN WING WLDMT
18	28037	8	1.5ID x 2.5OD THRUST WASHER
19	28050	2	PIN, 1.25 DIA
20	28058	2	PIVOT PIN
21	28076	1	LH MAIN WING WLDMT
22	530172	8	U-BOLT, 7 X 7 X 5/8, ZINC
23	590146	9	WASHER, FLAT 1" ZINC
24	590265	2	PLATE, WEAR
25	790017	1	SIGN, SMV PLASTIC MOLDED

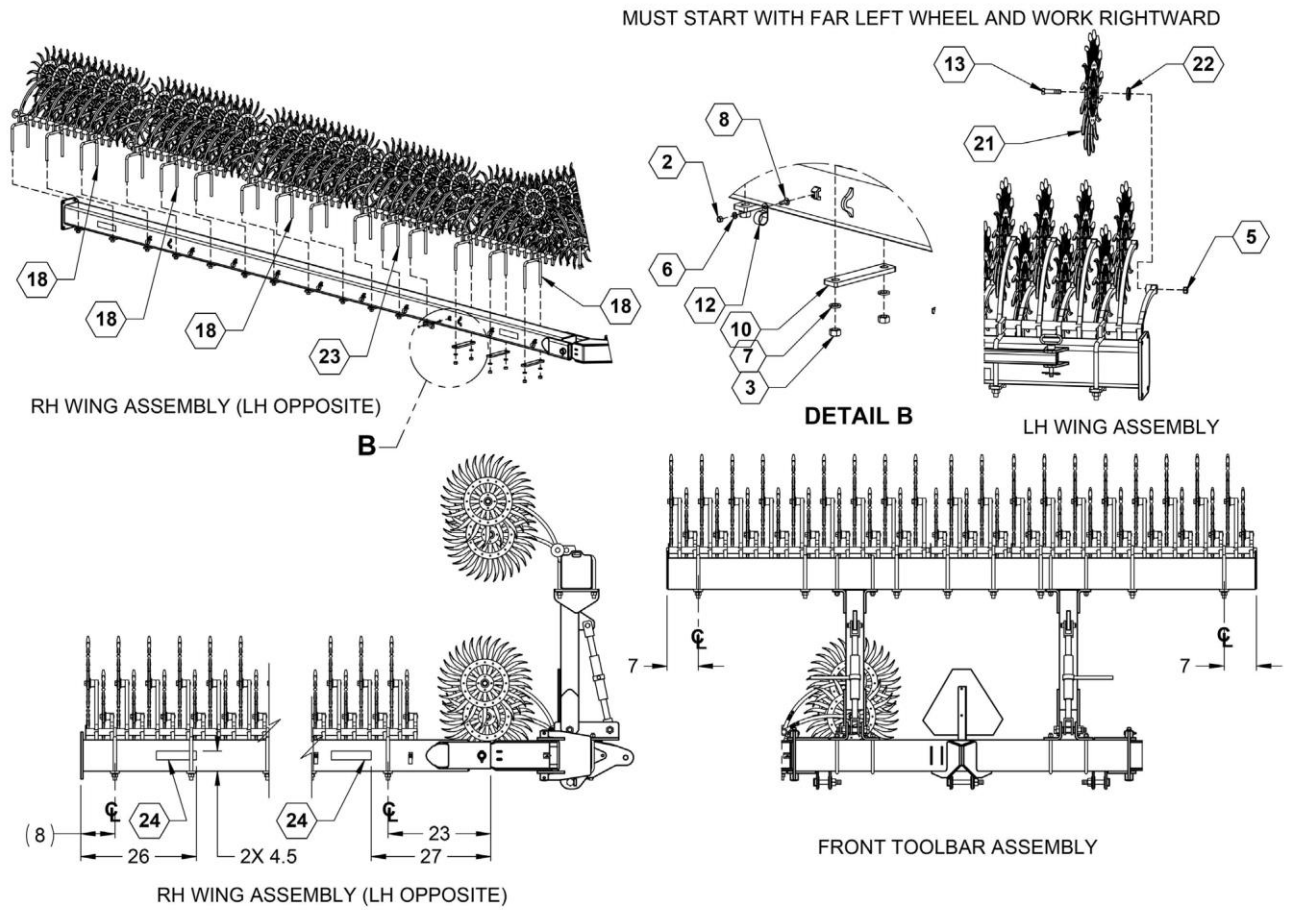
Base Toolbar Assembly



Base Toolbar Assembly Parts List

ITEM	PART NO.	QTY.	DESCRIPTION
1	131	4	BOLT, HH 3/8-16X 2-1/2 ZINC
3	217	76	NUT, HEX 3/4-10 G5ZINC
4	237	8	NUT, CENTERLOCK 3/8-16ZINC
7	254	76	LOCKWASHER, 3/4 ZINC
9	726	4	BOLT, FHSCS 3/8-16X 1-1/4 ZINC
10	27542	38	PLATE, ROW UNIT BOLT MOUNT
11	28075	1	ASSY, BARE BASE TOOLBAR
14	590833	2	TURNBUCKLE, 24" RATCHETING
15	590017	2	PIN, HAIR CLIP, 1/8 X 3-1/8" ZP
16	790043	2	HITCH PIN, 5/8" X 4"
17	3500-137	1	YETTER 5 WHEEL AXLE ASSY – Less Wheels
19	3500-105	1	YETTER 16 WHEEL AXLE ASSY - Less Wheels
20	3500-119	1	YETTER 17 WHEEL AXLE ASSY - Less Wheels
21	3400-111	174	YETTER ROTARY HOEWHEELS
25	800287	7	DECAL, GREASE PIVOT POINTS

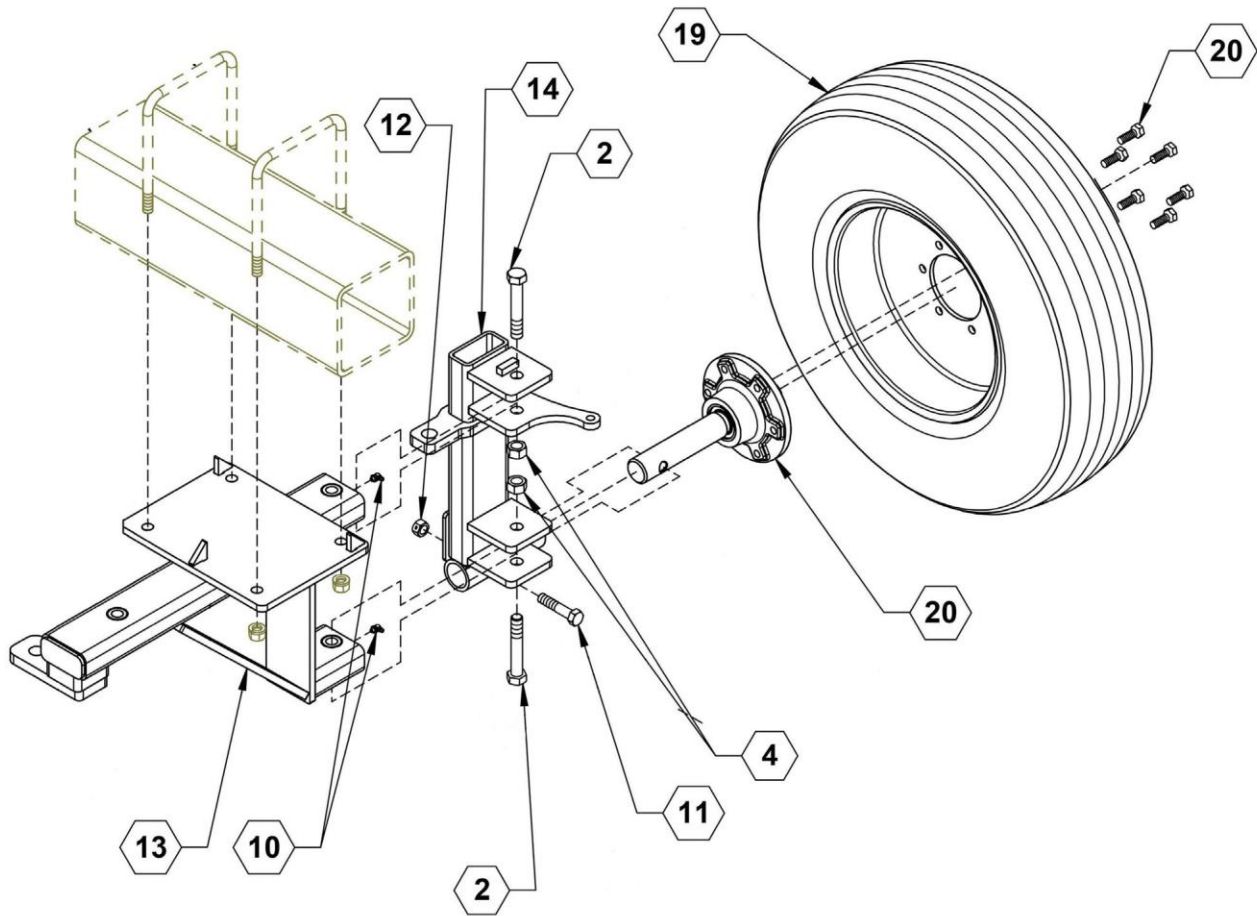
Base Toolbar Assembly



Base Toolbar Assembly Parts List

ITEM	PART NO.	QTY.	DESCRIPTION
2	213	20	NUT, HEX 3/8-16 ZINC
3	217	76	NUT, HEX 3/4-10 G5 ZINC
5	240	174	NUT, CENTERLOCK, 5/8-11, ZINC
6	250	20	LOCKWASHER, 3/8 ZINC
7	254	76	LOCKWASHER, 3/4 ZINC
8	592	20	BOLT, CARRIAGE 3/8-16 X 1 ZINC
10	27542	38	PLATE, ROW UNIT BOLT MOUNT
12	540035	20	P-CLAMP, 1-1/4"
13	590347	174	BOLT, HH 5/8-11X2.75 GR5 ZP
18	3500-104	8	YETTER 14 WHEEL AXLE ASSY – Less Wheels
21	3400-111	174	YETTER ROTARY HOE WHEELS
22	3400-108	174	BEARING SHIELD, 3400-108
23	3500-102	2	YETTER 12 WHEEL AXLE ASSY – Less Wheel
24	2565-808	4	DECAL, AMBER REFLECTOR

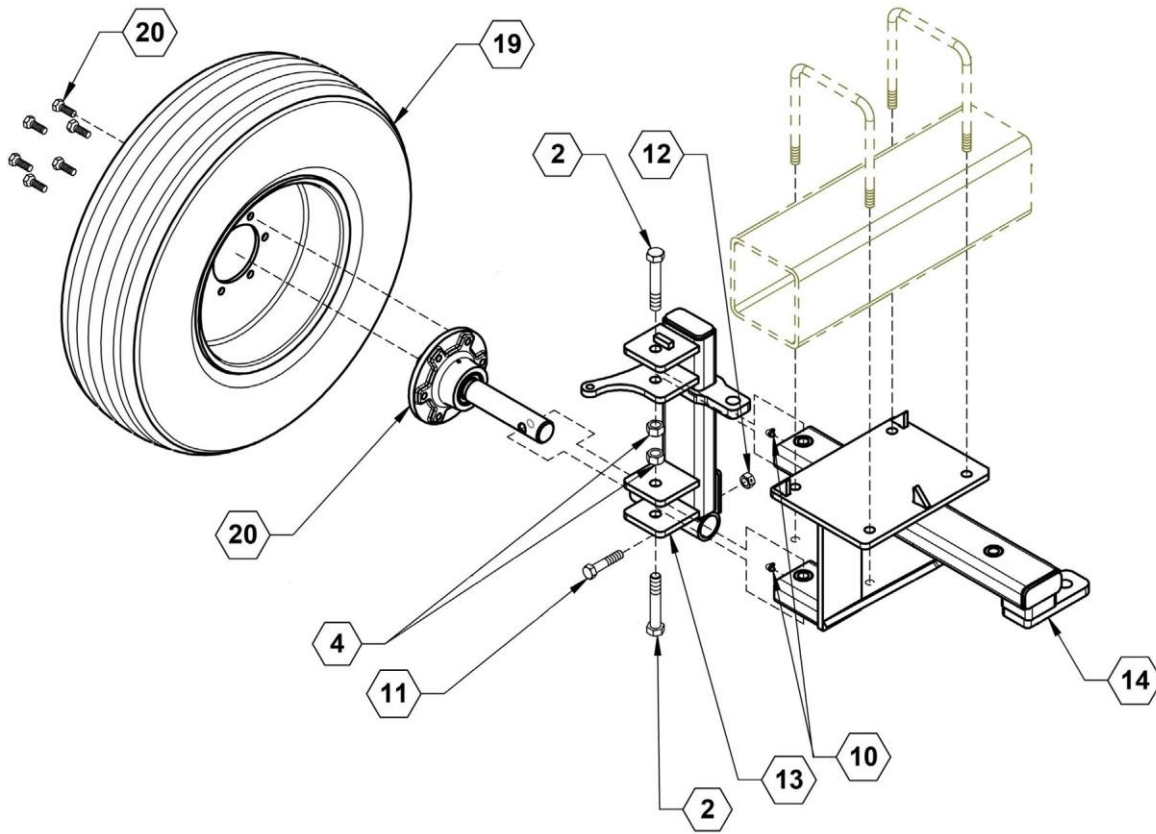
LH Wing Wheel Assembly



LH Wing Wheel Assembly Parts List

ITEM	PART NO.	QTY.	DESCRIPTION
2	189	2	BOLT, HH 3/4-10 X 4 1/2 GR5 ZINC
4	233	2	NUT, HEX NYLOCK 3/4-10ZINC
10	761	2	ZERK, 90~, 1/4-28 STRAIGHT PIPE THREAD
11	812	1	BOLT, HH 5/8-11 X 3 GR8 ZINC
12	817	1	NUT, CENTERLOCK, 5/8-11, GR8ZINC
13	28034	1	WLDMNT, LH REAR TIRE MNT
14	28036	1	WLDMT, LH REAR TIRE PIVOT
19	700209	1	WHEEL, TITAN 9.5L 15 SL, 6 BOLT RIM
20	730106	1	HUB, 709 HUB & SPINDLE PKG

RH Wing Wheel Assembly



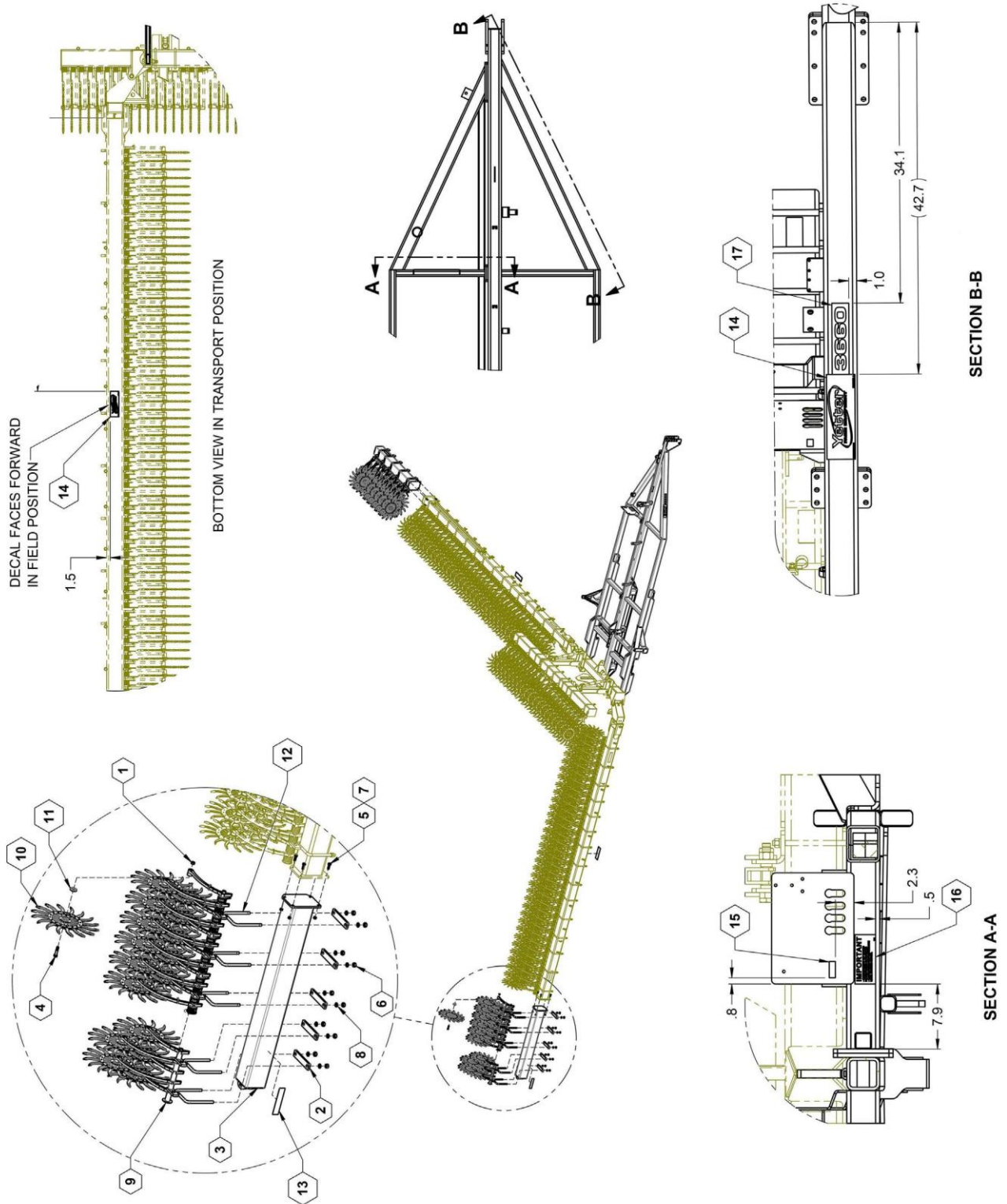
RH Wing Wheel Assembly Parts List

ITEM	PART NO.	QTY.	DESCRIPTION
2	189	2	BOLT, HH 3/4-10 X 4 1/2 GR5 ZINC
4	233	2	NUT, HEX NYLOCK 3/4-10 ZINC
10	761	2	ZERK, 90~, 1/4-28 STRAIGHT PIPE THREAD
11	812	1	BOLT, HH 5/8-11 X 3 GR8 ZINC
12	817	1	NUT, CENTERLOCK, 5/8-11, GR8ZINC
13	28017	1	WLDMNT, RH REAR TIRE PIVOT
14	28018	1	WLDMNT, RH REAR TIRE MNT
19	700209	1	WHEEL, TITAN 9.5L 15 SL, 6 BOLT RIM
20	730106	1	HUB, 709 HUB & SPINDLE PKG

50' Toolbar Parts List

ITEM	PART NO.	QTY.	DESCRIPTION
1	28022	2	CROSS TUBE MOUNT
2	596153M	8	BOLT, HH 1/2-13X1-1/2 GR5 MAGNI
3	596239M	8	NUT, CENTERLOCK, 1/2-13 MAGNI
4	2565-058	4	DECAL, YETTER BRAND
5	2565-466	1	DECAL, YETTER SERIAL
6	2565-164	1	DECAL, YETTER FOLDING BACKING
7	800267	2	DECAL, YETTER MODEL 3650

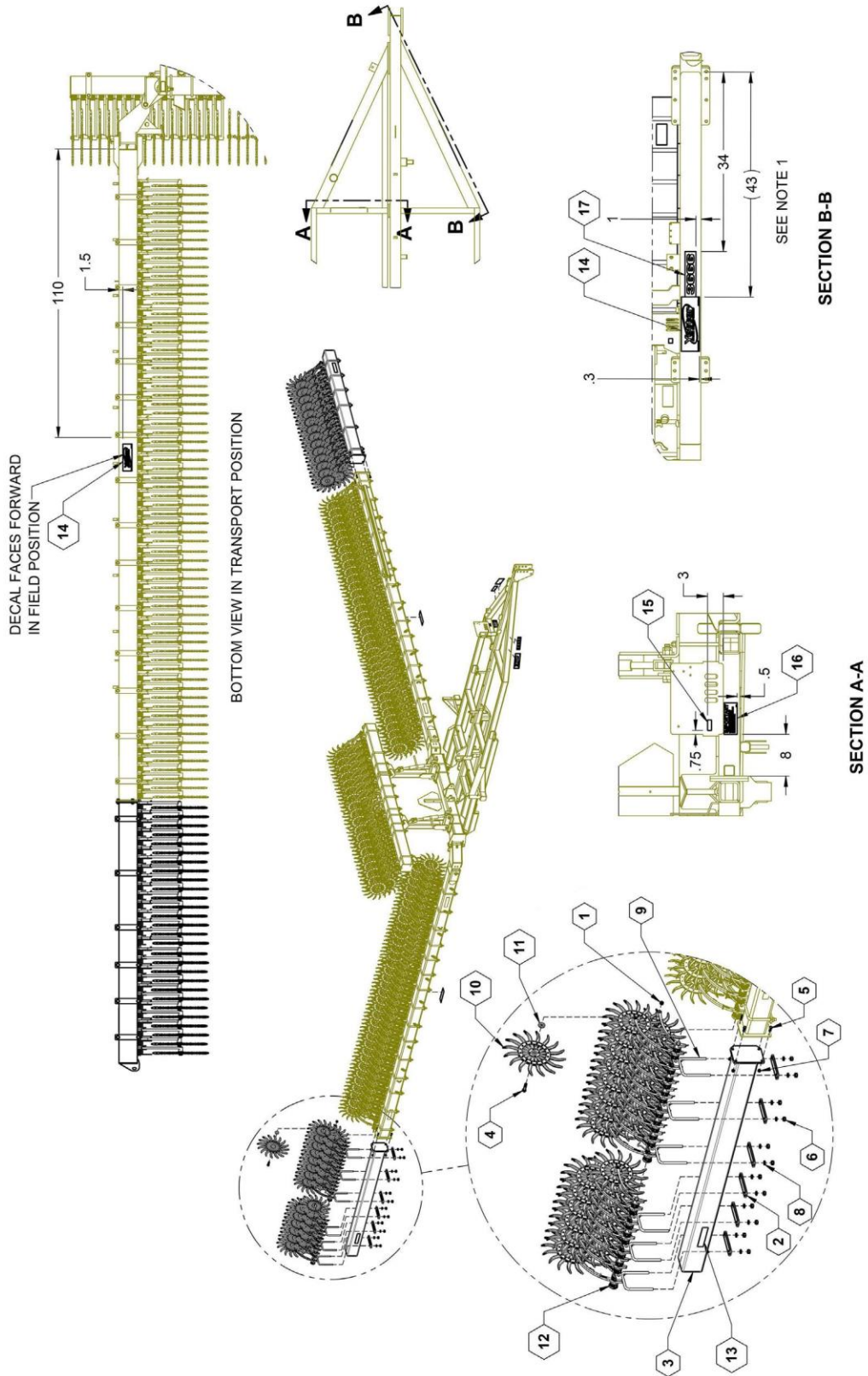
60' Toolbar



60' Toolbar Parts List

ITEM	PART NO.	QTY.	DESCRIPTION
1	240	34	NUT, CENTERLOCK, 5/8-11
2	3400-323	10	PLATE, ROW UNIT BOLT MOUNT
3	28028	2	18M/60FT WING EXTENSION
4	590347	34	BOLT, HH 5/8-11X2.75 GR5 ZP
5	596153M	8	BOLT, HH 1/2-13X1-1/2 GR5 MAGNI
6	596217M	20	NUT, HEX 3/4-10 G5 MAGNI
7	596239M	8	NUT, CENTERLOCK, 1/2-13 MAGNI
8	596254M	20	LOCKWASHER, 3/4 MAGNI
9	3500-137	2	YETTER 5 WHEEL AXLE ASSY
10	3400-111	34	YETTER ROTARY HOE WHEELS
11	3400-408	34	BEARING SHIELD
12	3500-103	2	YETTER 12 WHEEL AXLE ASSY
13	2565-808	2	DECAL, AMBER REFLECTOR
14	2565-058	4	DECAL, YETTER BRAND
15	2565-466	1	DECAL, YETTER SERIAL
16	2565-164	1	DECAL, YETTER FOLDING BACKING
17	800268	2	DECAL, YETTER MODEL 3660

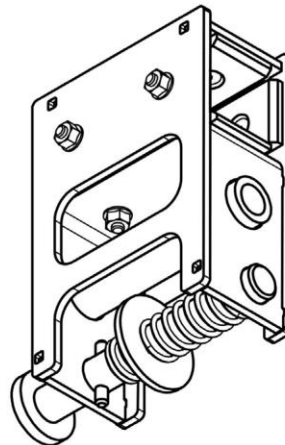
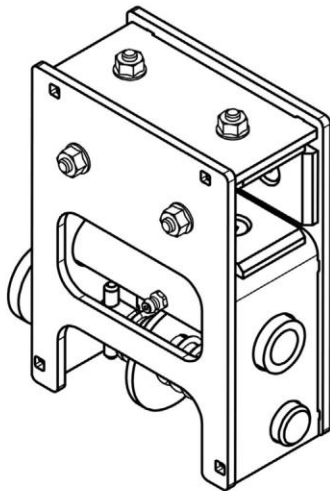
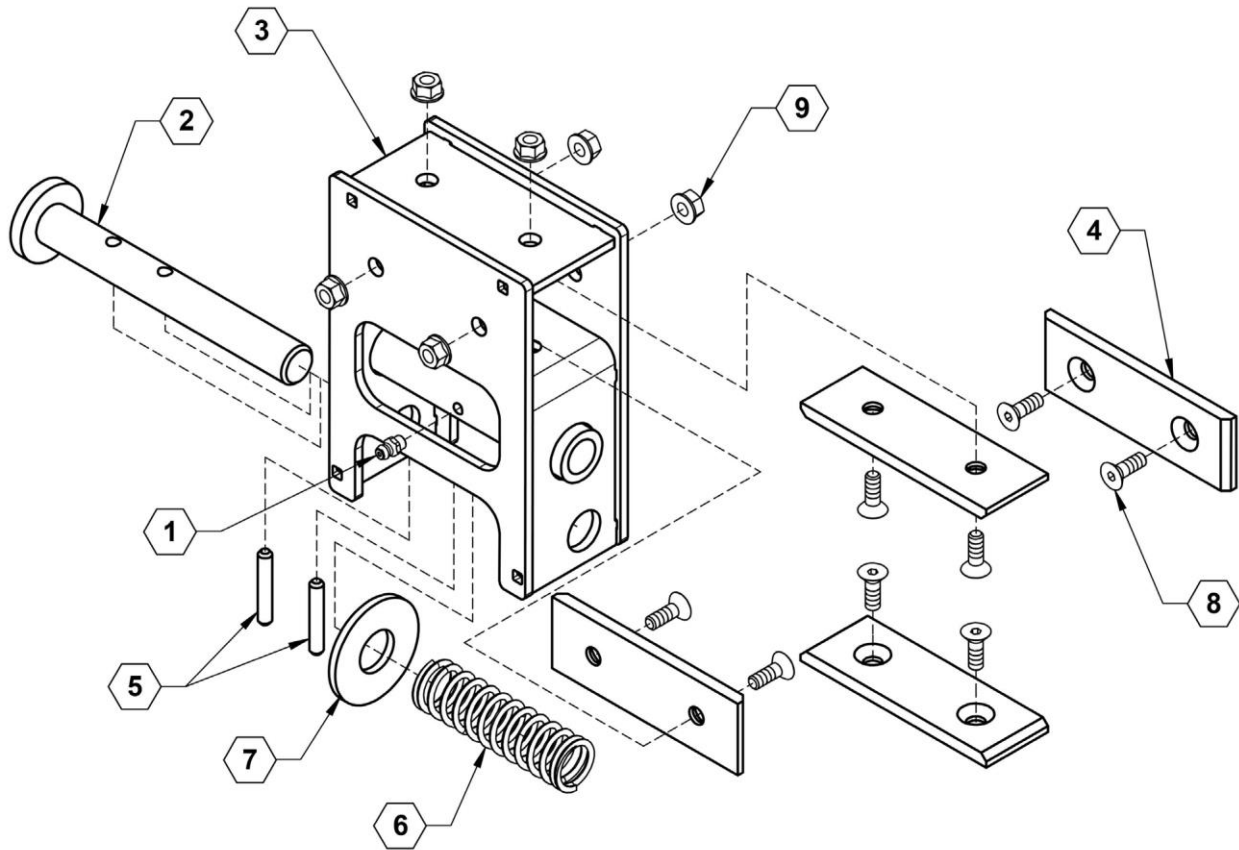
66' Toolbar



66' Toolbar Parts List

ITEM	PART NO.	QTY.	DESCRIPTION
1	240	56	NUT, CENTERLOCK, 5/8-11
2	27542	12	PLATE, ROW UNIT BOLT MOUNT
3	28029	2	66 FT WING EXTENSION
4	590347	56	BOLT, HH 5/8-11X2.75 GR5 ZP
5	596153M	8	BOLT, HH 1/2-13X1-1/2 GR5 MAGNI
6	596217M	24	NUT, HEX 3/4-10 G5 MAGNI
7	596239M	8	NUT, CENTERLOCK, 1/2-13 MAGNI
8	596254M	24	LOCKWASHER, 3/4 MAGNI
9	3500-105	2	YETTER 16 WHEEL AXLE ASSY
10	3400-111	56	YETTER ROTARY HOE WHEELS
11	3400-408	56	BEARING SHIELD
12	3500-103	2	YETTER 12 WHEEL AXLE ASSY
13	2565-808	2	DECAL, AMBER REFLECTOR
14	2565-058	4	DECAL, YETTER BRAND
15	2565-466	1	DECAL, YETTER SERIAL
16	2565-164	1	DECAL, YETTER FOLDING BACKING
17	800269	2	DECAL, YETTER MODEL 3666

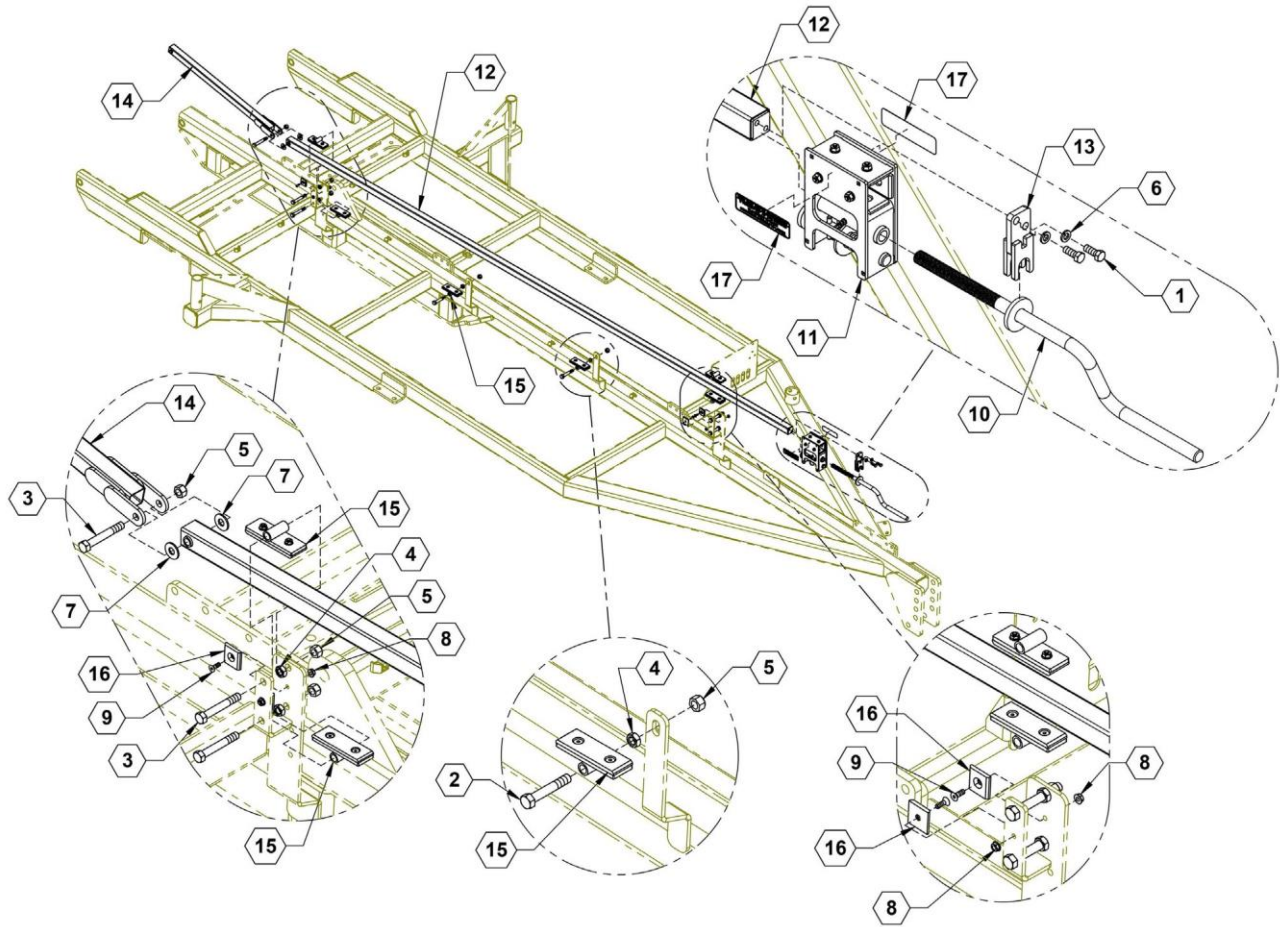
Bump Adjust Assembly



Bump Adjust Assembly Parts List

ITEM	PART NO.	QTY.	DESCRIPTION
1	759	1	ZERK, 1/4-28 STRAIGHT
2	28087	1	PLUNGER
3	28088	1	BUMP ADJUST
4	28095	4	POLY, DEPTH ADJUST SLIDE
5	590299	2	SPRING PIN 1/4 X 1-1/2, ZINC
6	590846	1	COMPRESSION SPRING
7	596259M	1	WASHER, FLAT 3/4 MAGNI
8	596629M	8	FHSCS 1/4-20 X 3/4 MAGNI
9	596767M	8	NUT, HEX FLANGE 1/4-20 MAGNI

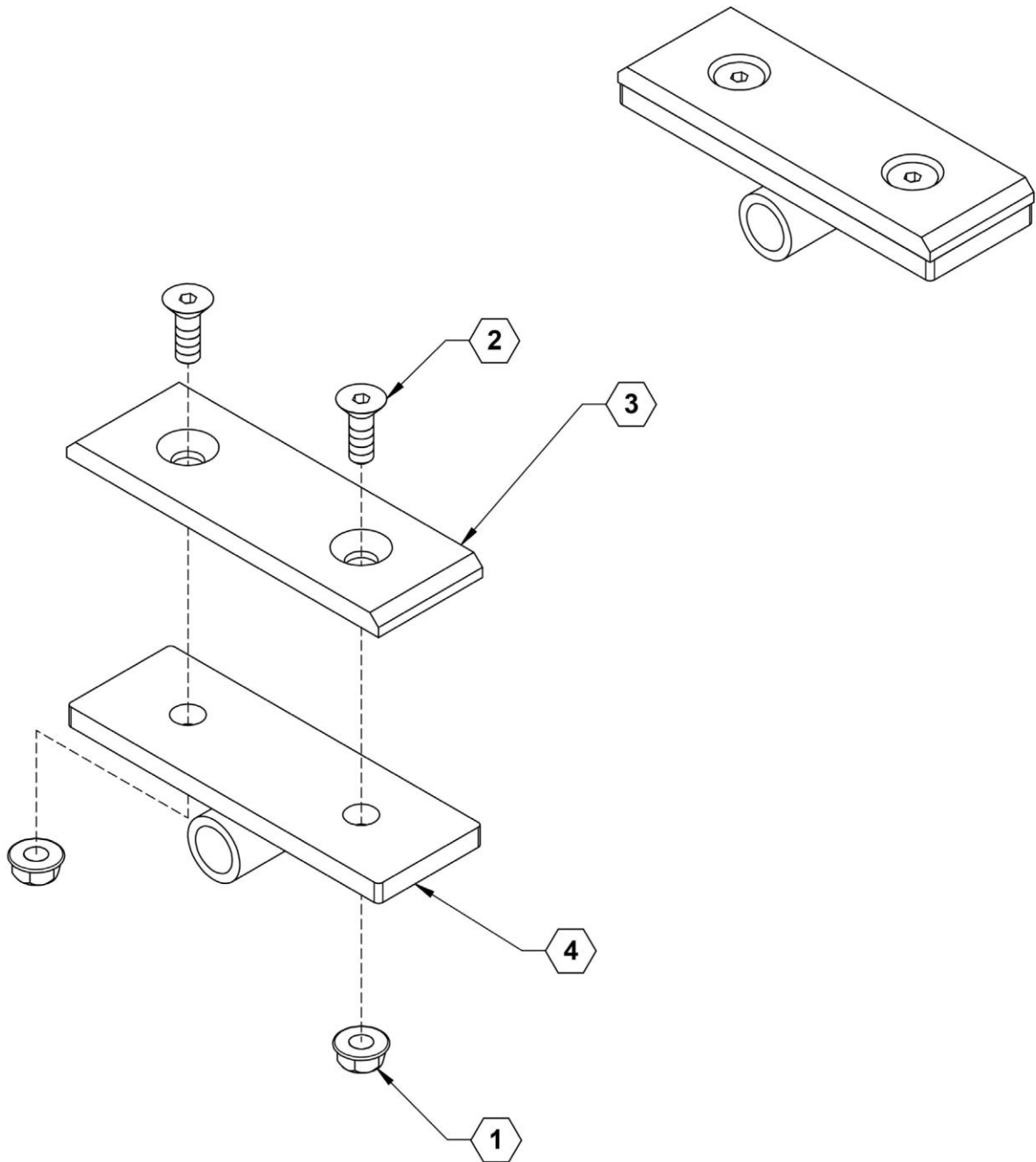
Row Depth Adjust Assembly



Depth Adjust Assembly Parts List

ITEM	PART NO.	QTY.	DESCRIPTION
1	128	2	BOLT, HH 3/8-16 X 1 GR5 ZIN
2	156	2	BOLT, HH 1/2-13 X 3 GR5 ZIN
3	157	5	BOLT, HH 1/2-13 X 3-1/2 GR5 ZIN
4	223	6	NUT, HEX JAM 1/2-13 GR5 ZIN
5	231	7	NUT, HEX NYLOCK 1/2-13 ZIN
6	250	2	LOCKWASHER, 3/8ZINC
7	260	2	WASHER, FLAT, 1/2 ZINC
8	767	4	NUT, FLANGE, 1/4-20 GR5ZINC
9	800	4	FHSCS, 1/4-20 X 3/4ZINC
10	28080	1	WLDMNT, ADJUST HANDLE
11	28089	1	ASSY, BUMP ADJUST
12	28091	1	WLDMNT, DEPTH TUBE
13	28096	1	WLDMNT, BASE ANCHOR
14	28100	1	WLDMNT, DEPTH FRONT TUBE
15	28102	6	ASSY, SLIDE PIVOT
16	28134	4	PAD, SIDE BRACE
17	800262	2	DECAL, DEPTH ADJUSTMENT

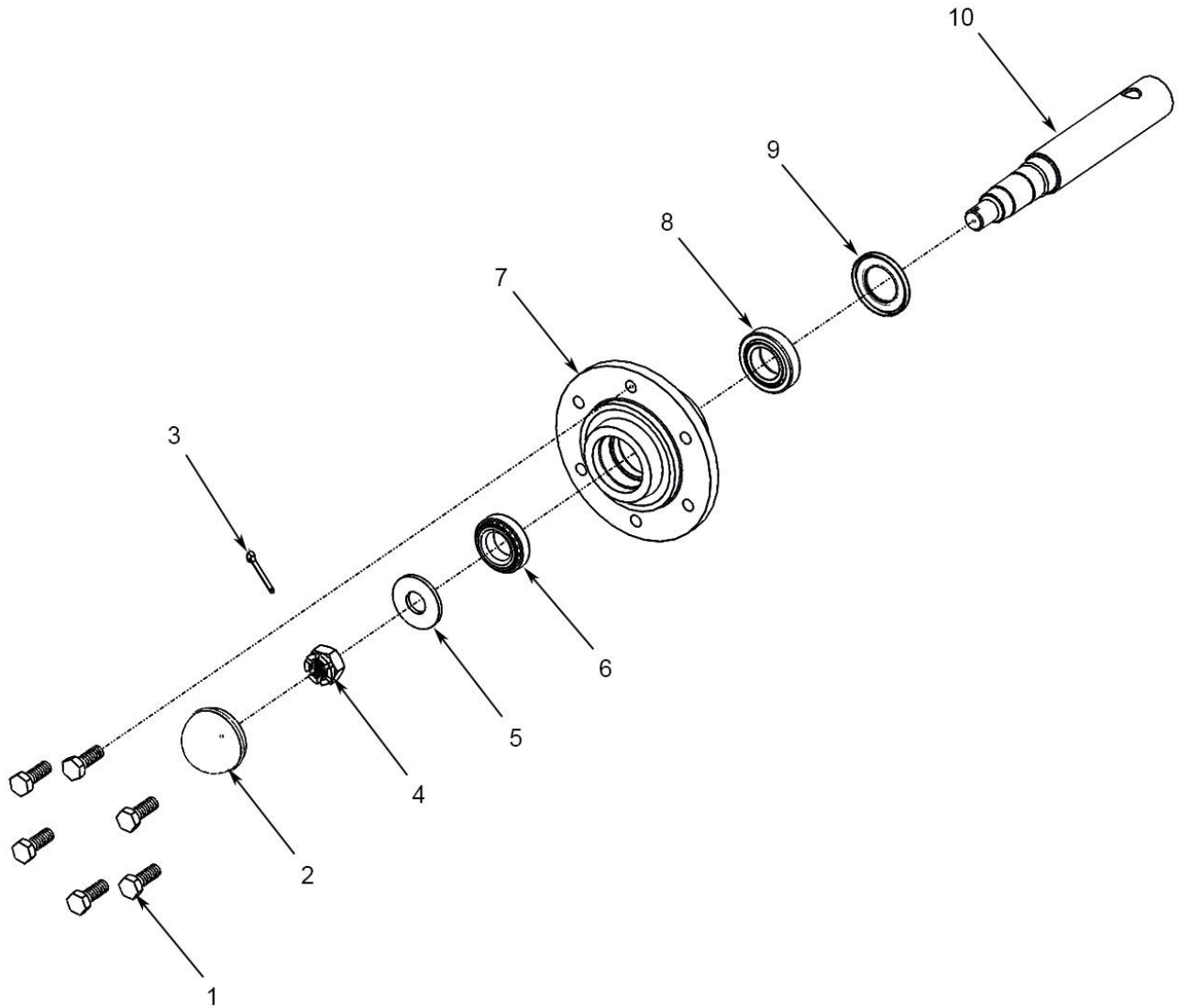
Slide Pivot Assembly



Slide Pivot Assembly Parts List

ITEM	PART NO.	QTY.	DESCRIPTION
1	767	2	NUT, FLANGE, 1/4-20 GR5ZINC
2	800	2	FHSCS, 1/4-20 X 3/4 ZINC
3	28095	1	POLY, DEPTH ADJUSTSLIDE
4	28103	1	WLDMNT, SLIDE PIVOT

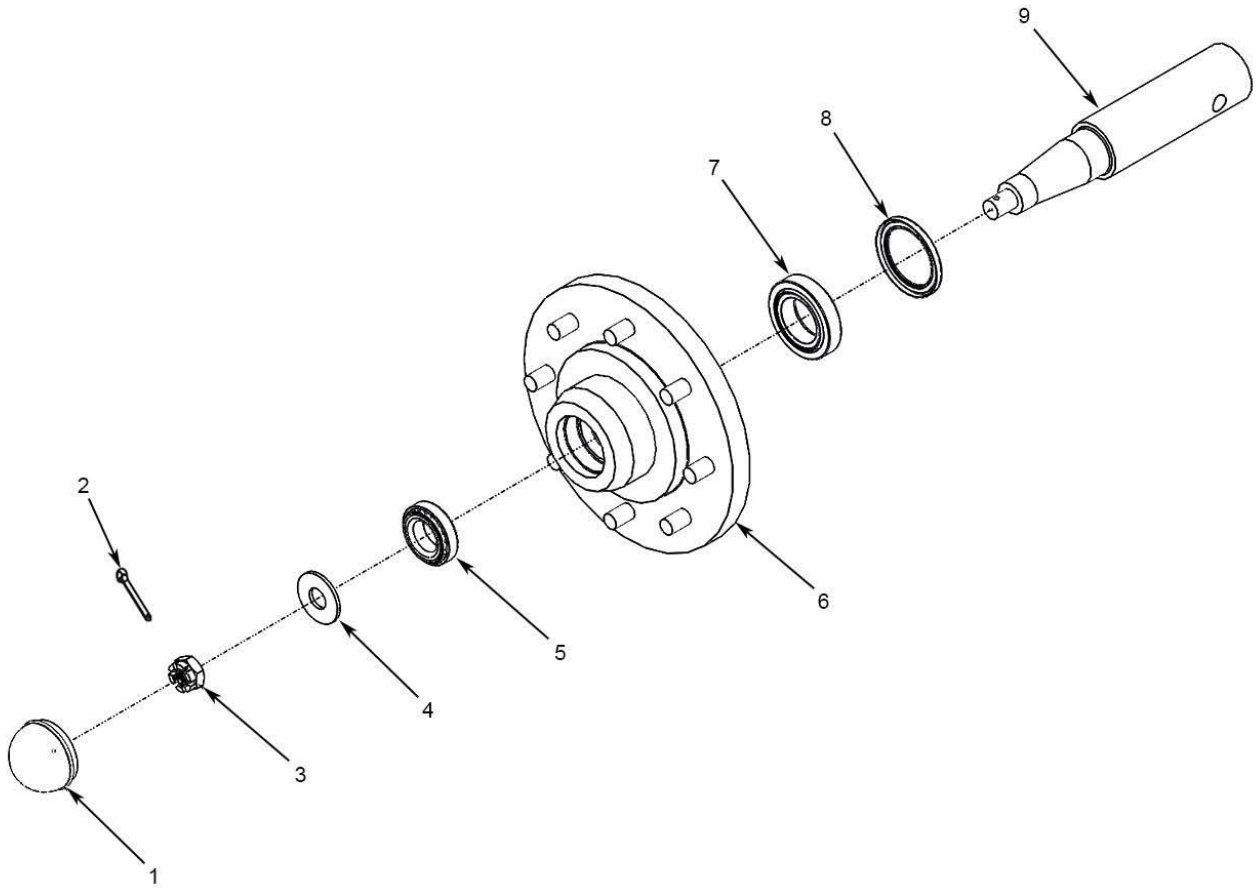
Hub and Spindle Assembly (N709) 730106



Hub and Spindle Assembly (N709) Parts List

ITEM	VENDOR PART NO.	PART NO.	QTY.	DESCRIPTION
0		730106	1	COMPLETE HUB AND SPINDLE ASSEMBLY (N709)
1	943549		6	BOLT
2	909905		1	CAP
3	N/A	N/A	1	COTTER PIN
4	912952		1	NUT
5	913683		1	WASHER
6	LM67048		1	OUTER CUP AND CONE BEARING
7*	730106		1	HUB N709
8	LM48510		1	INNER CUP AND CONE BEARING
9	906283		1	SEAL
10*	730106		1	SPINDLE
				* INCLUDED WITH 730106

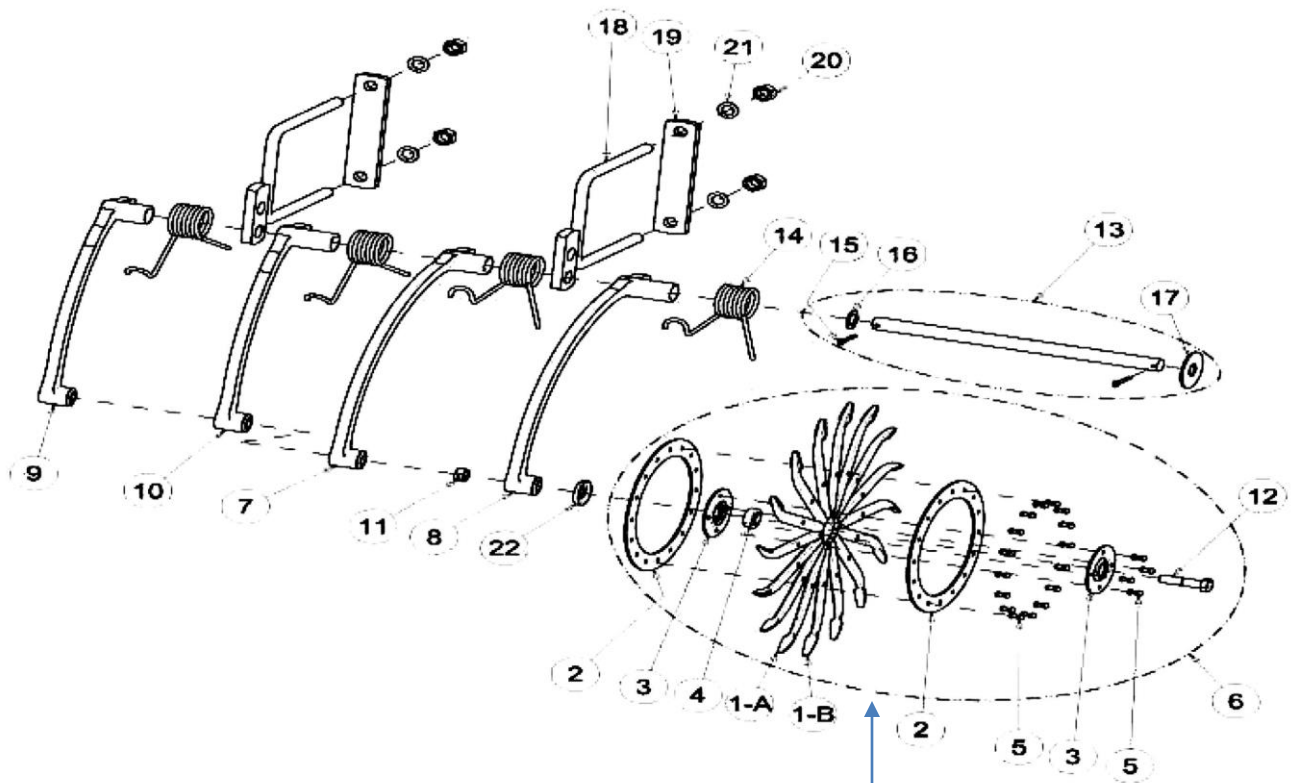
Hub and Spindle Assembly (N45-8) 730008



Hub and Spindle Assembly (N45-8) Parts List

ITEM	VENDOR PART NO.	PART NO.	QTY.	DESCRIPTION
0		730008	1	COMPLETE HUB AND SPINDLE ASSEMBLY (N45-8)
1	909905		1	CAP
2	N/A	N/A	1	COTTER PIN
3	912953		1	NUT
4	913616		1	WASHER
5	LM67048		1	OUTER CUP AND CONE BEARING
6	730008		1	HUB
7	LM603049		1	INNER CUP AND CONE BEARING
8	906297		1	SEAL
9	07-08400		1	SPINDLE

Rotary Hoe Wheel Axle Assembly

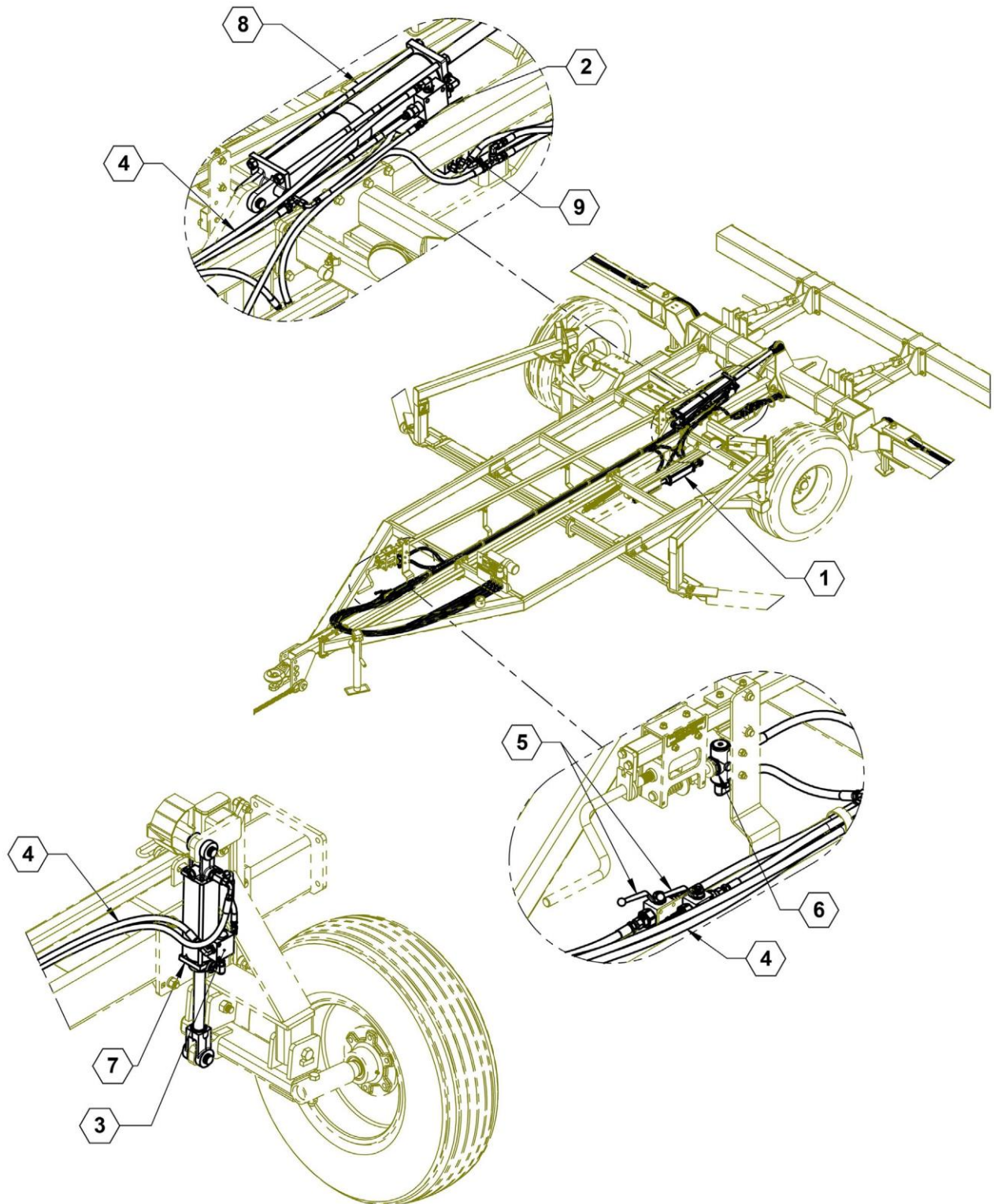


Order Complete Part Number: 3400-111

Rotary Hoe Wheel Axle Assembly Parts List

ITEM	VENDOR PART NO.	QTY.	DESCRIPTION
1A	3400-300	12	SECONDARY HOE TOOTH
1B	3400-201	4	HOE TOOTH, 2 - HOLE
2	3400-340	2	RING
3	3400-341	2	HUB
4	2550-016	1	BEARING
5	2534-106	20	RIVET, 1" X 1-1/8"
6*	3400-111	1	PAINTED WHEEL ASSEMBLY, BLACK
7	2555-144	A/R	SHORT HUB - REAR ARM CASTING
8	2555-116	A/R	LONG HUB - REAR ARM CASTING
9	2555-118	A/R	SHORT HUB - FRONT ARM CASTING
10	2555-117	A/R	LONG HUB - FRONT ARM CASTING
11*	2520-459	A/R	5/8"-11 LOCK HEX NUT, ZP
12*	2502-323	A/R	5/8"-11 X 2-3/4" HEX HEAD BOLT, GR5 ZP
13	3500-137	1	5 WHEEL AXLE ASSEMBLY
13	3500-103	1	12 WHEEL AXLE ASSEMBLY
13	3500-104	1	14 WHEEL AXLE ASSEMBLY
13	3500-105	1	16 WHEEL AXLE ASSEMBLY
13	3500-119	1	17 WHEEL AXLE ASSEMBLY
14	2515-716	A/R	ROTARY HOE TORSION SPRING
15	2531-125	A/R	1/4"X X1-3/4" COTTER KEY. ZP
16	2527-564	A/R	1" ID X 1-1/2" OD X 14GA M.B.
17	3400-383	A/R	3" OD X 1-1/32" ID X 1/8" WASHER
18	3500-210	A/R	7" X 9" U-BOLT & PIVOT (7" X 7" BAR)
19*	3400-323	A/R	7" CONNECTING PLATE
20*	2520-504	A/R	3/4"-10 HEX NUT ZP
21*	2525-501	A/R	3/4" MEDIUM LOCKWASHER ZP
22*	3400-408	A/R	BEARING SHIELD
			* NOT INCLUDED WITH SECTION ASSEMBLIES ABOVE

Hydraulic Assembly

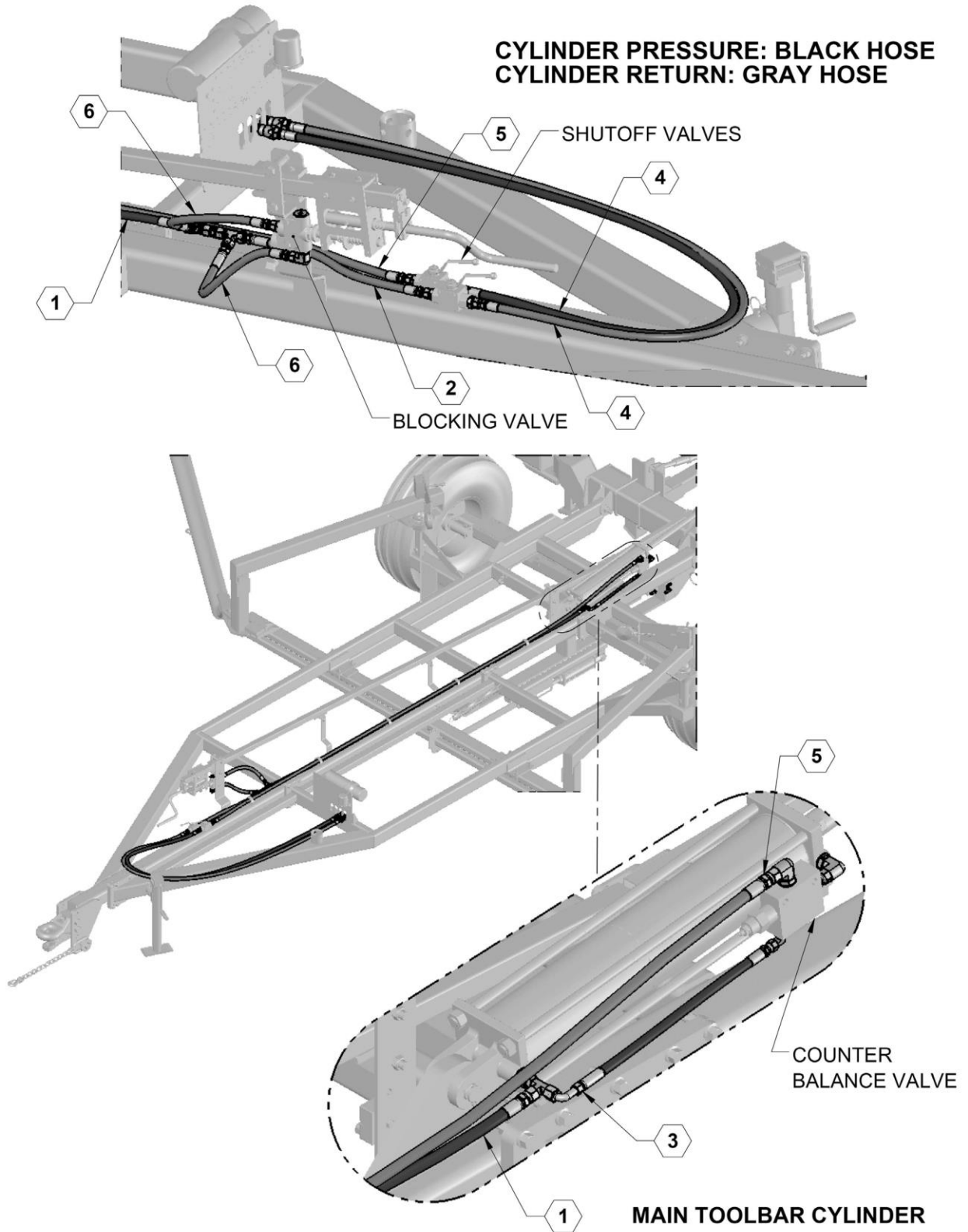


WHEEL ASSEMBLY (LH SHOWN)

Hydraulic Assembly Parts List

ITEM	PART NO.	QTY.	DESCRIPTION
1	28072	1	ASSEMBLY, FIELD LATCH CYLINDER
1	28054	1	SLOTTED CYLINDER CLEVIS
1	620023	1	HYDRAULIC CYLINDER
2	500049	1	VALVE, COUNTERBALANCE
3	500059	2	VALVE, P.O. CHECK, SINGLE
4	600113	1	ROTARY HOE HYDRAULIC KIT
5	610153	2	VALVE, MANUAL SHUT OFF
6	610154	1	VALVE, PUSH BUTTON BLOCKING
7	620023	2	CYLINDER, 25TD08-112
8	620099	1	CYLINDER 4 X 20" 1.75" ROD 3000PSI
9	630035	1	FLOW DIVIDER

Center Cylinder Hoses

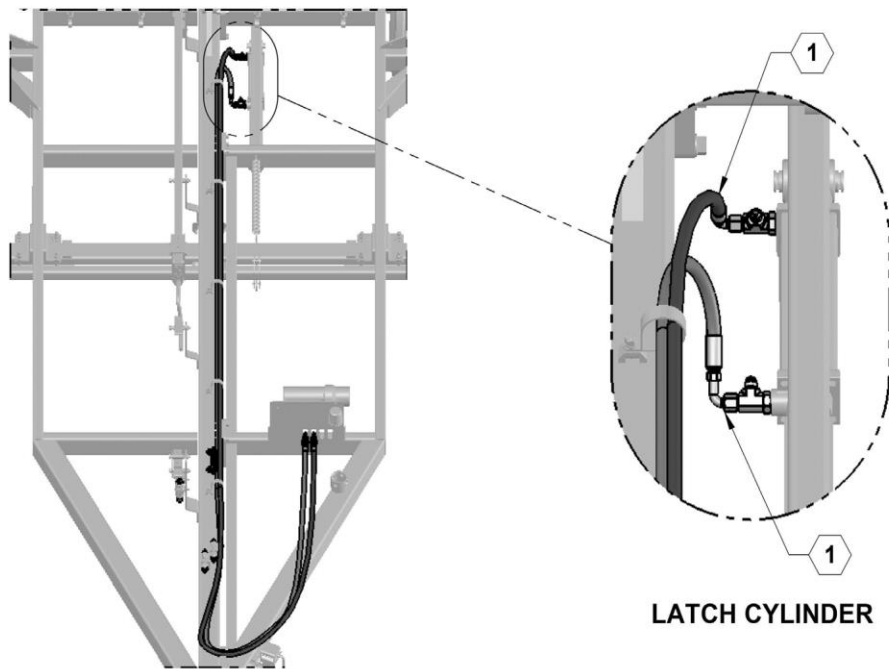
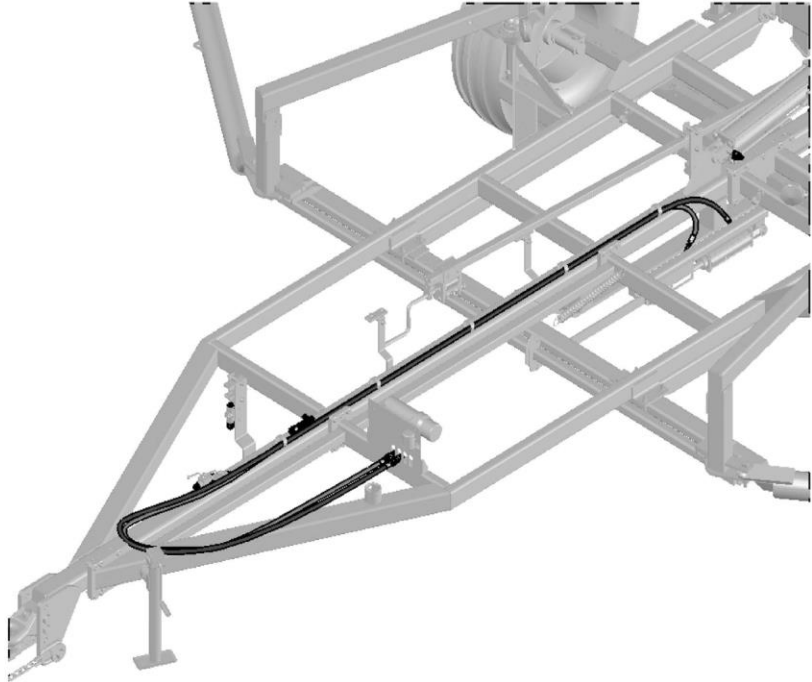


Center Cylinder Hoses Parts List

ITEM	PART NO.	QTY.	DESCRIPTION
1	600113-2	1	HOSE ASSY, 06-6FJX-8FJX-108
2	600113-3	1	HOSE ASSY, 06-6FJX-8FJX-19.5
3	600113-4	1	HOSE ASSY, 04-6FJX90-4FJX-20
4	600113-7	2	HOSE ASSY, 06-6FJX-8MOR-89
5	600113-9	1	HOSE ASSY, 06-6FJX-6FJX-149
6	600113-10	2	HOSE ASSY, 06-6FJX-08FJX-16.5

Field Latch Hoses

FIELD LATCH PRESSURE: BLACK HOSE
FIELD LATCH RETURN: GRAY HOSE



TOP VIEW

LATCH CYLINDER



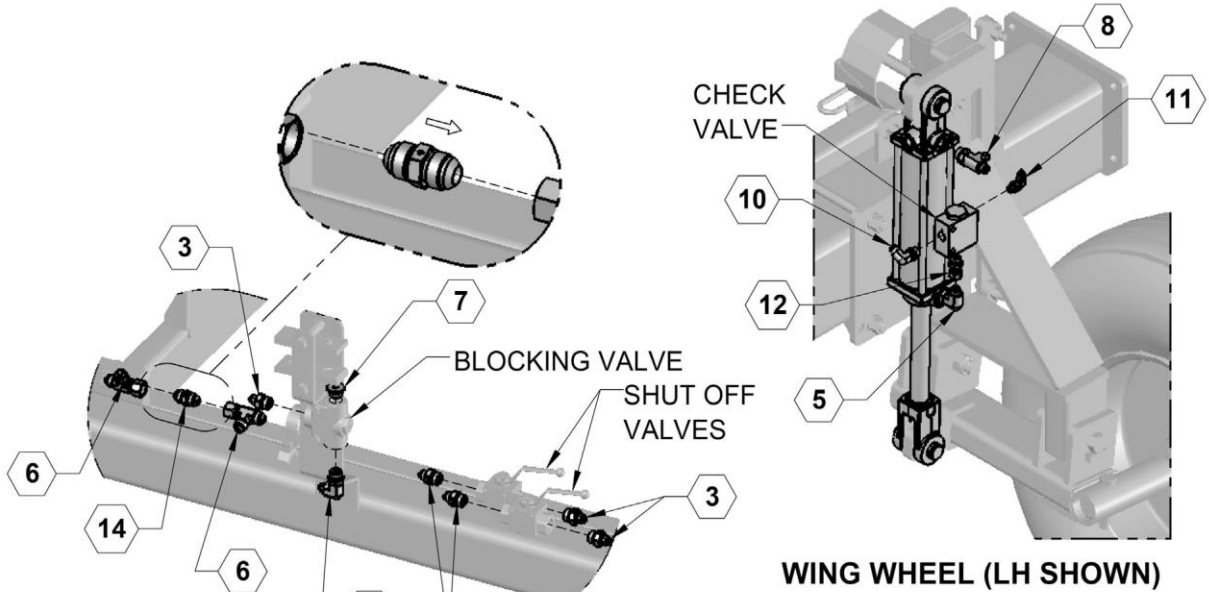
ILLUSTRATED PARTS LIST

Field Latch Hoses Parts List

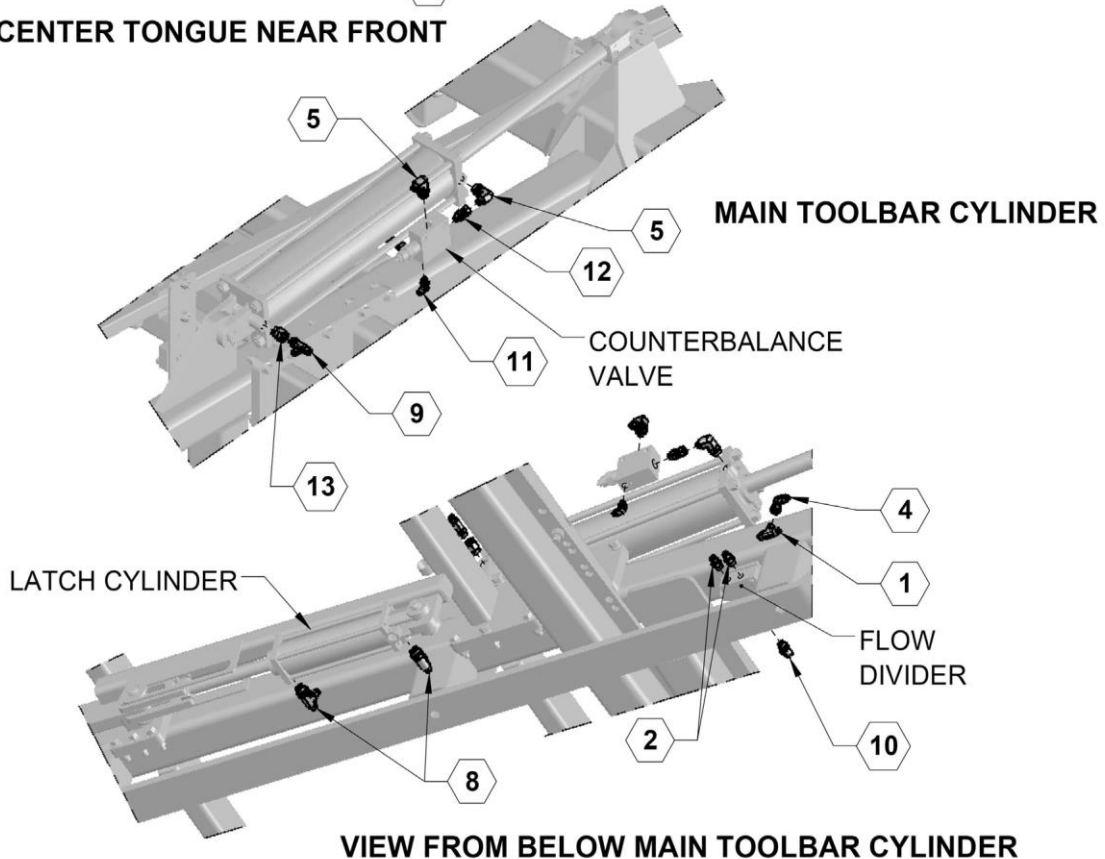
ITEM	PART NO.	QTY.	DESCRIPTION
1	600113-1	2	HOSE ASSY, 06-6FJX90-8MOR-220

Hydraulic Fitting Locations

CHECK VALVE ALLOWS FLOW FROM BASE END
ARROW POINTING FORWARD



CENTER TONGUE NEAR FRONT

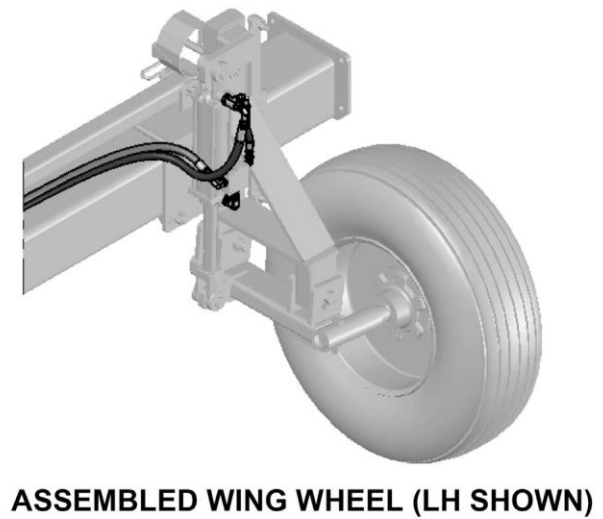
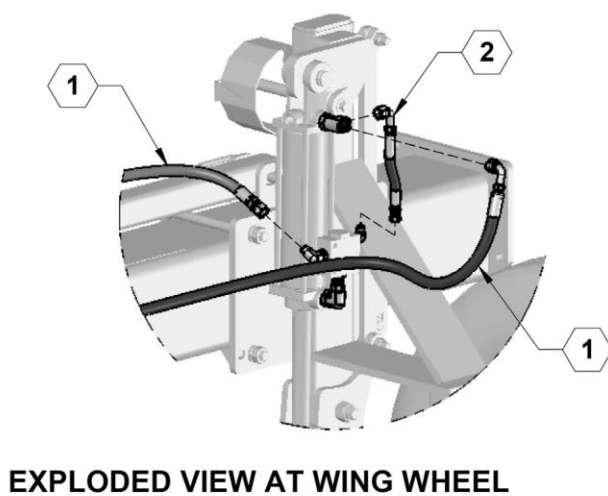
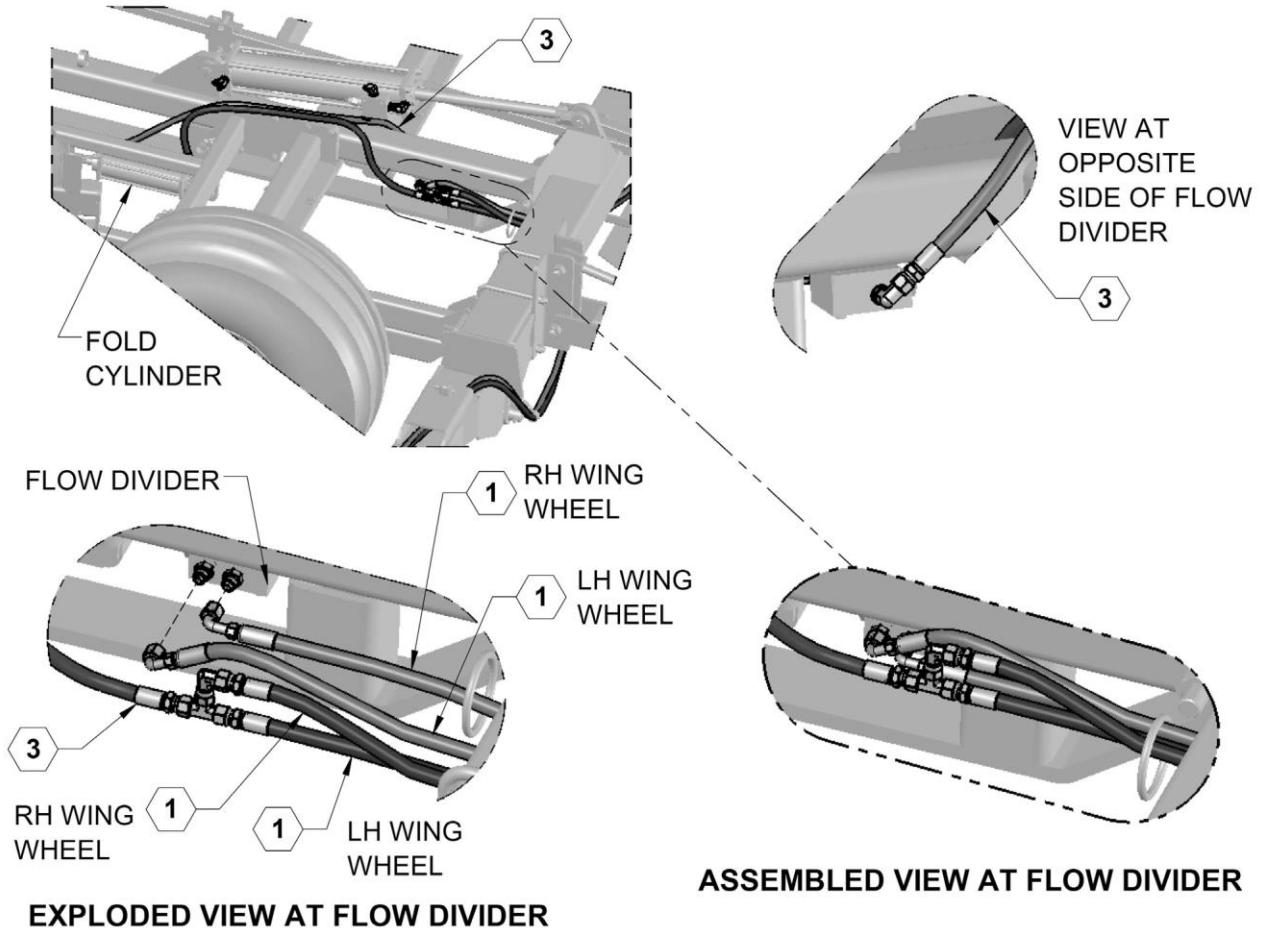


Hydraulic Fitting Locations Parts List

ITEM	PART NO.	QTY.	DESCRIPTION
1	610005	1	JIC UNION TEE #6
2	610010	2	JIC #6 TO ORING #6
3	610011	5	JIC #6 TO ORING #8
4	610023	1	JIC #6 90 DEG
5	610030	5	JIC #6 TO ORING #8 90 DEG
6	610053	2	JIC #8 SWIVEL RUN TEE
7	610062	1	#8 O-RING PLUG
8	610066	4	#8 ORING TO JIC #6 RUN TEE
9	610074	1	JIC TO ORING #6 RUN TEE
10	610078	3	JIC #6 TO #6 ORING 90~
11	610084	3	ELBOW 90~ #4 JIC #4 O-RING
12	610113	3	#6 O-RING TO #6 JICF SWIVEL
13	610159	1	#8 MORB x #6 FORB REDUCER
14	630043	1	INLINE CHECK VALVE

Wing Fold Hoses

WING FOLD PRESSURE: BLACK HOSE
WING FOLD RETURN: GRAY HOSE



Wing Fold Hoses Parts List

ITEM	PART NO.	QTY.	DESCRIPTION
1	600113-5	4	HOSE ASSY, 06-6FJX90-6FJX-319
2	600113-6	2	HOSE ASSY, 04-6FJX90-4FJX-8
3	600113-8	2	HOSE ASSY, 06-6FJX-6FJX-47

NOTES



A Tradition of Solutions since 1930

Yetter Farm Equipment Co

PO BOX 358 109 S. McDonough

Colchester, IL 62326-0358

Phone: 309-776-4111

Toll Free: 800-447-5777

Email: info@yetterco.com

For updated models and manuals visit the Yetter website:

www.yetterco.com

© Yetter Farm Equipment Co. All Rights Reserved