



**OWNER'S MANUAL  
8500 SERIES HEAD CART  
ALL MODELS**

2565-799\_G 09/2025



**Yetter Manufacturing**

Founded 1930

Colchester, IL 62326

Call: (309)776-4111

Fax: (309)776-3222

Website: [www.yetterco.com](http://www.yetterco.com)

Email: [info@yetterco.com](mailto:info@yetterco.com)

# FOREWORD

You've just joined an exclusive but rapidly growing club.

For our part, we want to welcome you to the group and thank you for buying a Yetter product.

We hope your new Yetter products will help you achieve both goals-increase your productivity and increase your efficiency so that you may generate more profit.

This operator's manual has been designed into four major sections: Foreword, Safety Precautions, Installation Instructions and Parts Breakdown.

This **SAFETY ALERT SYMBOL** indicates important safety messages in the manual. When you see this symbol, be alert to the possibility of **PERSONAL INJURY** and carefully read the message that follows.



**DANGER:** Indicates an imminently hazardous situation which, if not avoided "will" result in death or serious injury. This signal word is to be limited to the most extreme situations



**WARNING:** Indicates a potentially hazardous situation which, if not avoided, "could" result in death or serious injury.



**CAUTION:** Indicates a potentially hazardous situation, which if not avoided, "may" result in minor or moderate injury. It may also be used to alert against unsafe practices.



**NOTICE:** Indicates information considered important, but not hazard related (e.g., messages relating to property damage).

It is the responsibility of the user to read the operator's manual and comply with the safe and correct operating procedure and to lubricate and maintain the product according to the maintenance schedule in the operator's manual.

The user is responsible for inspecting his machine and for having parts repaired or replaced when continued use of the product would cause damage or excessive wear to the other parts.

It is the user's responsibility to deliver his machine to the Yetter dealer who sold him the product for service or replacement of defective parts, which are covered by the warranty policy.

If you are unable to understand or follow the instructions provided in this publication, consult your local Yetter dealer or contact:

## YETTER MANUFACTURING CO.

309/776-4111

800/447-5777

309/776-3222 (FAX)

Website: [www.yetterco.com](http://www.yetterco.com)

E-mail: [info@yetterco.com](mailto:info@yetterco.com)

## WARRANTY POLICY

Yetter Manufacturing warrants all products manufactured and sold by it against defects in material. This warranty being expressly limited to replacement at the factory of such parts or products as will appear to be defective after inspection. This warranty does not obligate the Company to bear cost of labor in replacement of parts. It is the policy of the company to make improvements without incurring obligations to add them to any unit already sold. No warranty is made or authorized to be made, other than herein set forth. This warranty is in effect for one year after purchase.

Model Number: \_\_\_\_\_

Serial Number: \_\_\_\_\_

Dealer : \_\_\_\_\_

**Yetter Manufacturing warrants its own products only and cannot be responsible for damage to equipment on which mounted.**



## SAFETY PRECAUTIONS



A brief description of signal words that may be used in this manual:

**DANGER:** Indicates an imminently hazardous situation which, if not avoided “will” result in death or serious injury. This signal word is to be limited to the most extreme situations.

**WARNING:** Indicates a potentially hazardous situation which, if not avoided, “could” result in death or serious injury.

**CAUTION:** Indicates a potentially hazardous situation, which if not avoided, “may” result in minor or moderate injury. It may also be used to alert against unsafe practices.

**NOTICE:** Indicates information considered important, but not hazard related (e.g., messages relating to property damage).

Consult your implement and tractor operator's manual for correct and safe operating practices. Be aware of towed implement width and allow safe clearance.

Safety decals are placed on the implement to alert the operator and others to the risk of personal injury or unsafe operation during normal operations and servicing.

1. The safety decals must be kept clean and in good condition to ensure that they are legible.
2. Safety decals must be replaced if they are missing or illegible.
3. When components are replaced during repair or servicing, check that the new components include the necessary safety signs.
4. Replacement safety decals may be obtained from your local dealer.



### WARNING

Read these instructions carefully to acquaint yourself with the Equipment. Working with unfamiliar equipment can lead to accidents.

Never park the equipment on a steep incline or leave the equipment running unattended.

Never clean, lubricate or adjust a machine that is in motion.

Always check that straps are secure.

Make sure latches are in pinned position when moving equipment.

Do not allow children to operate this equipment.

Do not allow riders on the equipment, trailer and/or pick-up.

Use speed and caution dictated by the terrain being traversed. Do not operate on any slope steep enough to cause tipping or loss of control.

Read and understand the operator's manual and require all other persons who will operate the equipment to do the same.

If operating on public roadways, where legal, be certain all lighting is operating properly and observe all traffic laws.

Beware of increased stopping distances and control effort when operating with implements attached.

Be familiar with all controls and be prepared to stop equipment quickly in an emergency.

**FAILURE TO HEED MAY RESULT IN PERSONAL INJURY OR DEATH.**

# TABLE OF CONTENTS

<b>SAFETY .....</b>	<b>4-6</b>
<b>GENERAL INFORMATION .....</b>	<b>7-9</b>
<b>SET-UP .....</b>	<b>10-11</b>
<b>OPERATION .....</b>	<b>12-13</b>
<b>MAINTENANCE .....</b>	<b>14</b>
<b>PART IDENTIFICATION.....</b>	<b>15-37</b>





## BOLT TORQUE



### NOTICE READ THESE INSTRUCTIONS FIRST:

1. Improperly tightened bolts will result in damage, breakage, expense, and down time.
2. Always replace bolts with the specified grade and type.
3. Torque properly before first use of the machine and every 2-4 hours of use until you are sure bolts are staying tight.
4. The chart below is a guide for proper torque. Use it unless a specified torque is called out elsewhere in the manual.
5. Torque is the force you apply to the wrench handle or the cheater bar, times the length of the handle or bar.
6. Use a torque wrench whenever possible.

The following table shows torque in ft. lbs.

BOLT DIA. AND THREADS PER INCH	 GRADE 2	 OR  GRADE 5 A-325	 GRADE 8
3/8-16	25	35	50
7/16-14	35	55	80
1/2-13	55	85	125
9/16-12	75	125	175
5/8-11	105	170	235
3/4-10	185	305	425
7/8-9	170	445	690
1-8	260	670	1030
1 1/8-7	365	900	1460
1 1/4-7	515	1275	2060
1 3/8-6	675	1675	2700
1 1/2-6	900	2150	3500
1 3/4-5	1410	3500	5600



## **SAFETY INFORMATION**



### **BE ALERT! YOUR SAFETY IS INVOLVED**

It is the responsibility of the owner, operator, or supervisor to know and instruct everyone using this machine at the time of initial assignment and at least annually thereafter, of the proper operation, precautions, and work hazard which exist in the operation of the machine in accordance with OSHA regulations.

### **SAFETY IS NO ACCIDENT**

**The following safety instructions combines with common sense will save your equipment from needless damage and the operator from unnecessary exposure to personal hazard. Pay special attention to the caution notes in the text. Review this manual each year and with new and experience operators.**

1. Read and understand the operator's manual before operating this machine. Failure to do so is considered a misuse of the equipment.
2. Make sure equipment is secure before use.
3. Always keep children away from equipment while in operation.
4. Make sure everyone that is not directly involved with the operation is clear of the work area before use.
5. Be sure all safety devices, shield, and guards are in place and functional before beginning operation
6. Shut off all power to the unit prior to adjustment, servicing, or cleaning.
7. Keep hands, feet, and clothing away from moving parts. It is a good idea to remove all jewelry before starting the operation.
8. Visually inspect the machine periodically during operation for signs of excessive vibration, loose fasteners, and unusual noises.

# **SAFETY INFORMATION**

## **During Operation**

- Regulate speed to field conditions. Maintain complete control at all times.
- Never lubricate equipment when in operation.
- Use extreme care when operating close to ditches, fences, or on hillsides.
- Do not leave towing vehicle unattended with engine running.
- Do not adjust the transporter with the head positioned over the unit.

## **Before Operation**

- Secure the transport chains to towing vehicle before transporting. DO NOT transport without the chains.
- Check for proper function of all available transport lights. Make sure that all reflectors are clean and in place on the machine.
- This implement may not be equipped with brakes. Ensure that the towing vehicle has adequate weight and braking capacity to tow this unit.
- Before transporting, secure the head with straps. Replace damaged or worn straps, and avoid putting straps over rough or sharp surfaces. Use appropriate number and capacity rating.

## **During Transport**

- Comply with state and local laws governing highway safety when moving machinery.
- Use transport lights as required by local laws to adequately warn operators of other vehicles.
- Use good judgement when transporting equipment on highways. Regulate speed to road conditions and maintain complete control.
- Slow down before making sharp turns to avoid tipping. Drive slowly over rough ground and side slopes.
- It is probable that this implement is taller, wider, and longer than the towing vehicle. Become aware of and avoid all obstacles and hazards in the travel path of the equipment such as power lines, ditches, etc.

## GENERAL INFORMATION

### 8500 Series Head Cart Trailers



Model No.	Description	Est. Wt.
8500-027	27' Head Cart	3260 lbs
8500-032	32' Head Cart	4103 lbs
8500-038	38' Head Cart	4358 lbs
8500-043	43' Head Cart	4741 lbs
8500-048	48' Head Cart	4970 lbs

### Optional Equipment

Model No.	Description	Est. Wt.
8500-001	Marker Pole	3 lbs
8500-144	Ball Hitch 2-5/16"	10 lbs
8500-166	Drop Pin Hitch	14 lbs
8500-150	Spare Tire Carrier	5 lbs
8500-151	2" Lift Kit (only for use with tall tires)	26 lbs
8500-228	Lower Head Rest "short"-- 4" shorter than stock	22 lbs
8500-232	Lower Head Rest "tall"—4" taller than stock	37 lbs

### Service Kits

Model No.	Description	Est. Wt.
8500-120	Rear Bearing and Drum Replacement Kit (1 Per Wheel)	40 lbs
8500-121	Lugnut and Stud Replacement Kit (1 Per Wheel)	4 lbs
8500-122	Front and Rear Bearing Replacement Kit (1 Per Wheel)	7 lbs
8500-123	Brake Replacement Kit (1 Per Axle)	10 lbs
8500-124	Front Bearing and Hub Replacement Kit (1 Per Wheel)	26 lbs

## GENERAL INFORMATION

### 8500 Series Head Cart Trailers

- Central beam design with adjustable truss supports
- Spare cutter bar storage
- Dual 12" rest brackets to fit any header platform with tool-less adjustments
- Drum brakes on rear axle(s)
- Front and rear torsion axles providing a smooth ride
- Molded front fenders protecting head and truck from road debris
- Tongue rotates around to main beam for easy winter storage and shipment
- Telescoping hitch adjustment
- Dual safety chains with standard clevis hitch. Options for drop-pin and ball hitch attachments
- LED lights and seven pin bladed receptacle for standard towing vehicles
- Tool box – 17 3/4" x 7 3/4" 7"
- Full width rear light support brackets
- Durable black powder coat finish
- Made in the USA, manufactured and shipped from Macomb, IL



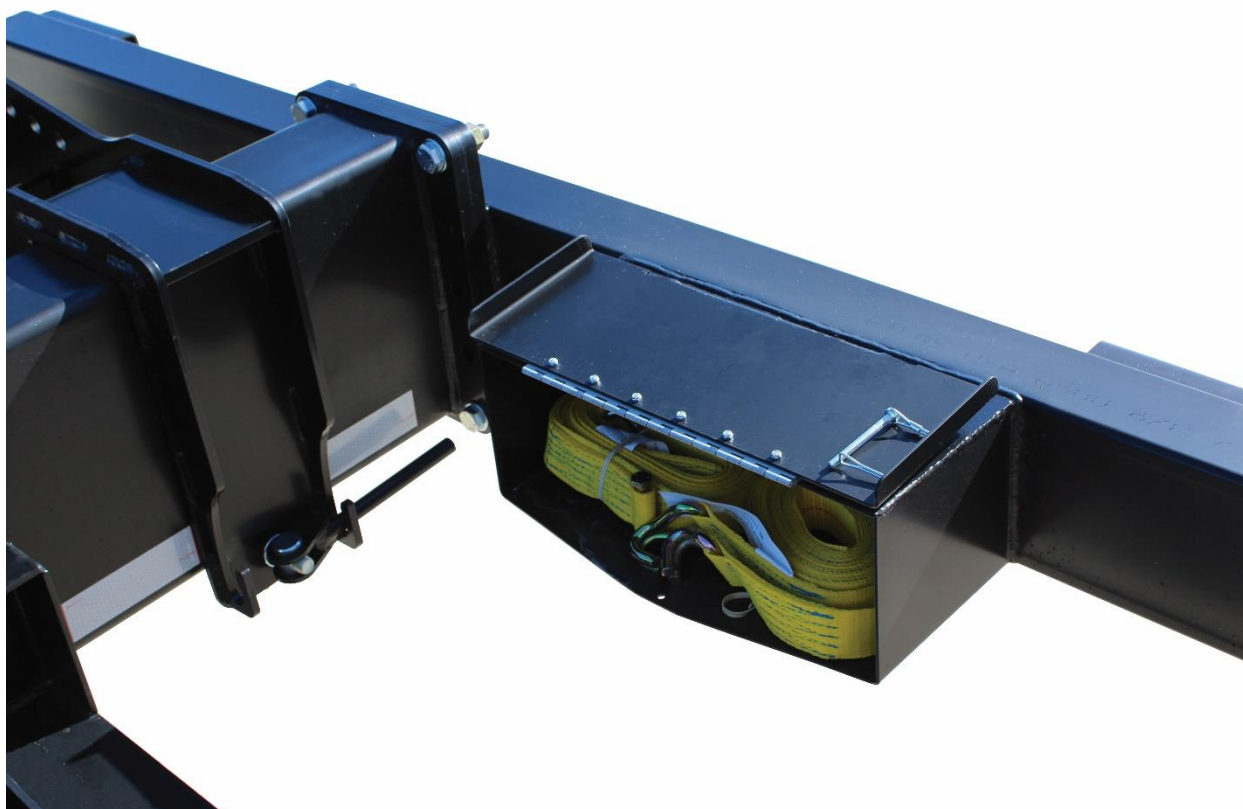


# GENERAL INFORMATION

## 8500 Series Head Cart Trailers

### Technical Specifications

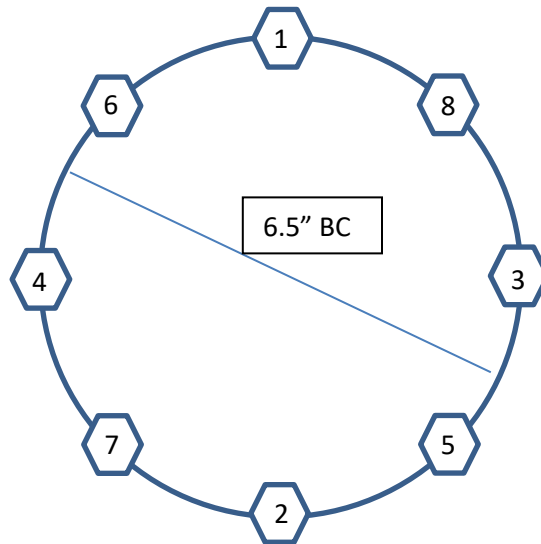
	8500-027	8500-032	8500-038	8500-043	8500-048
Overall Length (in)	429	489	561	621	681
Overall Width (in)	102	102	102	102	102
Overall Height (in)	44	44	44	44	44
Unloaded Weight (lb)	3260	4103	4391	4741	4970
Max Gross Weight (lb)	12000	18000	18000	18000	18000
Max Usable Weight (lb)	8740	13897	13609	13259	13030
Max Drawbar Pull (lb)	17600	17600	17600	17600	17600
Chassis Style	Single Beam	Single Beam	Single Beam	Single Beam	Single Beam
Axle Configuration	Single	Tandem	Tandem	Tandem	Tandem
Axle Stud Pattern	8 x 6.5" BC	8 x 6.5" BC	8 x 6.5" BC	8 x 6.5" BC	8 x 6.5" BC
Tire Size	8-14.5 LT 14 PLY	8-14.5 LT 14 PLY	8-14.5 LT 14 PLY	8-14.5 LT 14 PLY	8-14.5 LT 14 PLY
Max Tire PSI	65	65	65	65	65
Electric Brakes	Standard	Standard	Standard	Standard	Standard
Over Run Brakes	Standard	Standard	Standard	Standard	Standard
Cutter Bar Storage	Standard	Standard	Standard	Standard	Standard
Lights	Standard	Standard	Standard	Standard	Standard
Front Fenders	Standard	Standard	Standard	Standard	Standard
Accessory Box	Standard	Standard	Standard	Standard	Standard
License Plate Lights	Wire Leads Only	Wire Leads Only	Wire Leads Only	Wire Leads Only	Wire Leads Only
Rear Fenders	Optional	Optional	Optional	Optional	Optional
Marker Pole Kit	Optional	Optional	Optional	Optional	Optional
Spare Tire Carrier	Optional	Optional	Optional	Optional	Optional



# SET UP INSTRUCTIONS

## Tires and Wheels

1. Using a safe lifting device and jack stands rated at a minimum of 2500 lbs, raise the frame
2. Install wheels and tires onto the axles and secure with provided lug nuts. Refer to the table below for torque sequence and value.
  - Start all lug nuts by hand to prevent cross threading
  - Tighten nuts in the sequence shown below
  - Lug nuts should be torqued before first road use and after each wheel removal. Check and re-torque after the first 50 miles. A periodic check during regular service is recommended.



Wheel Size	Stud Size	1 <sup>st</sup> Stage	2 <sup>nd</sup> Stage	3 <sup>rd</sup> Stage
14.5 X 7	9/16"	20 lb-ft	65 lb-ft	125 lb-ft

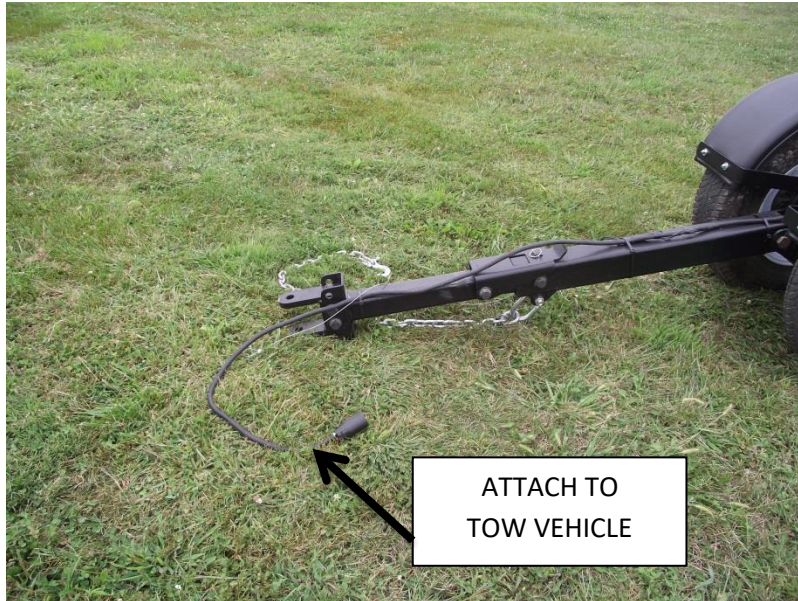
# SET UP INSTRUCTIONS

## Test Lights

Make sure no wires are pinched or cut during installation.

Keep all wires concealed to prevent them from getting caught on obstructions.

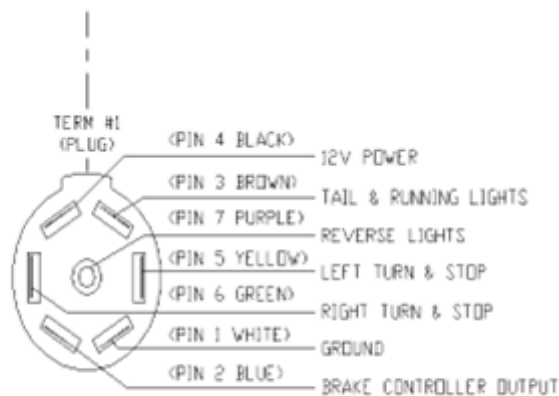
Attach 8500 Head Cart and wiring harness to tow vehicle to test the lights.



### Check the following:

- Tail lights
- Brake lights
- Left and right turn signals with and without brakes applied

**Note:** If any of the light tests fail, check wiring harness on tow vehicle for proper wiring.



Tongue harness 8500-445



## OPERATION



**Note:** Before hitching the header transport to any vehicle drawbar, be sure the pin hole is located close enough to the rear of the vehicle drawbar to allow the header transport tongue clevis to swing 90 degrees right or left of the centerline without interference.

**Note:** When hitching, be sure not to pinch wire harness. Position the wire harness away from all pinch points and any areas that may wear the harness.

**CAUTION: BE SURE TRANSPORT TONGUE IS LATCHED BEFORE TRANSPORTING, OTHERWISE JARRING COULD OCCUR WHEN STOPPING UNIT, CAUSING A SUDDEN SHIFT OF LOAD.**

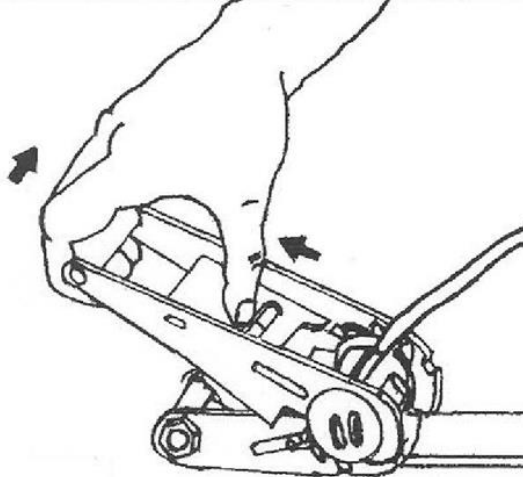
**CAUTION: ALWAYS USE TRANSPORT CHAINS WHEN TRANSPORTING IMPLEMENTS. FAILURE TO USE TRANSPORT CHAIN COULD CAUSE PERSONAL INJURY OR DAMAGE IF IMPLEMENT BECOMES DISENGAGED.**

# OPERATION

## Tie-Down Brackets

- The tie down brackets consist of two heavy duty strap assemblies which secure current design headers to the transport. For proper installation follow steps as shown.

1. Loosen strap by pulling up ratchet handle and lock in open position



**CAUTION: BE SURE RATCHES, WEBBINGS, AND HOOKS ARE IN PROPER WORKING CONDITION SO THAT DAMAGE DOES NOT OCCUR DUE TO LOSS OF HEADER FROM TRANSPORT**

**Note:** Before tightening, be sure header is resting against backstops on lower rest brackets.



**Note:** Be sure tie down bracket assemblies are secured to transport directly below the section on the header that the tie down hook is being attached to.



**Note:** It is recommended that the tie downs be secured to a main bar or sufficient bar/tube on the combine head that is rigid enough to support total weight of header. Failure to do so could result in damage to the combine header.



**CAUTION: BE SURE ALL SHARP EDGES ARE REMOVED SO THAT WEBBING DOES NOT BECOME CUT OR FRAYED.**



# MAINTENANCE

## Bearings

- Every 12,000 miles or once a year, repack wheel bearings with grease
  - Inspect bearings for signs of wear such as discoloration of rollers, spalling, pits, or metal flakes. Rollers and race should look shiny and new if in good condition. If any of these signs are found, replace bearings immediately.

## Brakes

- Every 12,000 miles or once a year, inspect brake shoes for wear. Be sure to replace brake shoes before friction material wears away entirely. Failure to do so can cause damage to the brake drum.

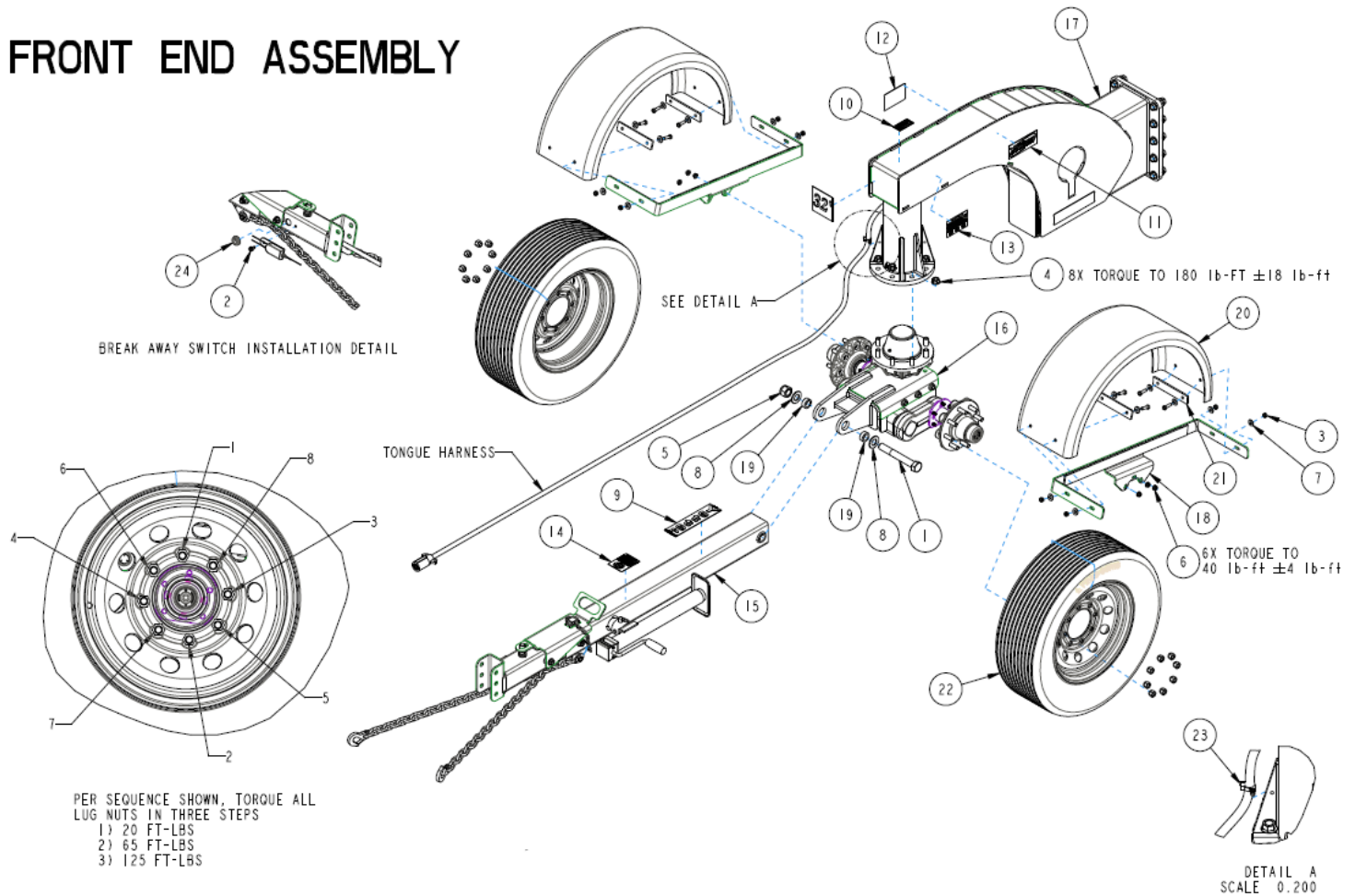
## Service Kits

For a visual part breakdown, go to the page listed.

Model No.	Description	Page
8500-120	Rear Bearing and Drum Replacement Kit (1 Per Wheel)	29
8500-121	Lugnut and Stud Replacement Kit (1 Per Wheel)	30
8500-122	Front and Rear Bearing Replacement Kit (1 Per Wheel)	31
8500-123	Brake Replacement Kit (1 Per Axle)	32
8500-124	Front Bearing and Hub Replacement Kit (1 Per Wheel)	33

# PART IDENTIFICATION

## FRONT END ASSEMBLY

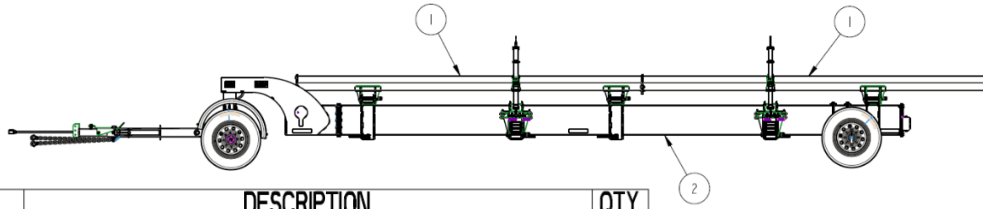


ITEM	PART NO.	DESCRIPTION	QTY
1	2502-766	1-8 X 7-1/2 HHCS GR 8 ZP	1
2	2513-509	5/16-18 X .75, HEX WASHER HEAD TAPPING SCREW, TYPE T, STEEL, ZP	1
3	2520-255	3/8-16 LOCK HEX NUT, GR A, ZP	8
4	2520-479	REGULAR SERRATED FLANGE LOCKNUT, ASME B18.16.4, 5/8-18, SAE 995 GR 8, ZINC PLATE	8
5	2520-563	1-8 NYLON LOCK NUT GR C, ZP	1
6	2520-599	REGULAR SERRATED FLANGE LOCKNUT, ASME B18.16.4, 3/8-24, SAE 995 GR 5, ZINC PLATE	6
7	2526-251	3/8 STANDARD FLATWASHER ZP	21
8	2526-542	1" SAE FLAT WASHER ZP	2
9	2565-366	AVENGER COULTER DECAL	1
10	2565-466	PRODUCT ID PLATE	1
11	2565-822	YETTER DECAL	4
12	2565-829	MADE IN U.S.A. DECAL	1
13	2565-830	TORQUE CHECK DECAL	1
14	2565-831	HARNESS CONNECTION DECAL	1
15	8500-117	EXTENDABLE TONGUE ASSEMBLY	1
16	8500-125	FRONT AXLE ASSEMBLY	1
17	8500-240	GOOSENECK W.A.	1
18	8500-243	FENDER MOUNT W.A.	2
19	8500-335	BUSHING	2
20	8500-337-D	VG09 JONESCO FENDER, DRILLED	2
21	8500-384	CLAMP PLATE, INNER FENDER	4
22	8500-427	TIRE AND WHEEL ASSEMBLY	6
23	8500-452	WIRE HARNESS RETAINER	2
24	8500-491	GROMMET	1

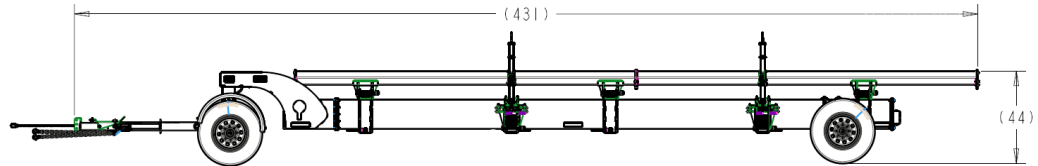


# PART IDENTIFICATION

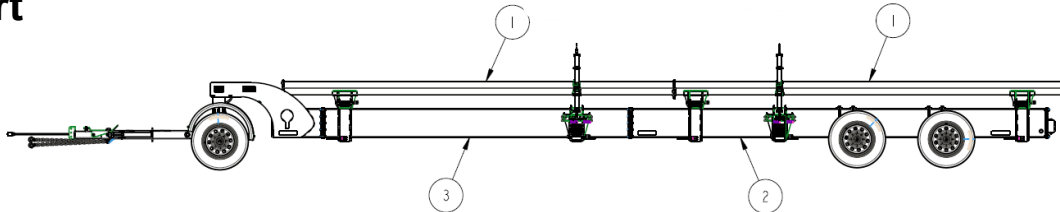
## 27' Cart



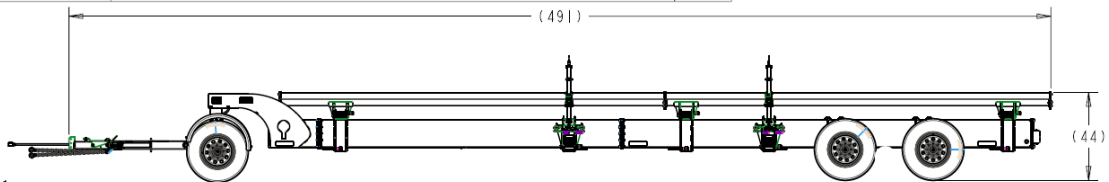
ITEM	PART NO.	DESCRIPTION	QTY
1	8500-223	HEADER REST 27FT CART W.A.	2
2	8500-244	MAIN BEAM W.A., 22 FT	1



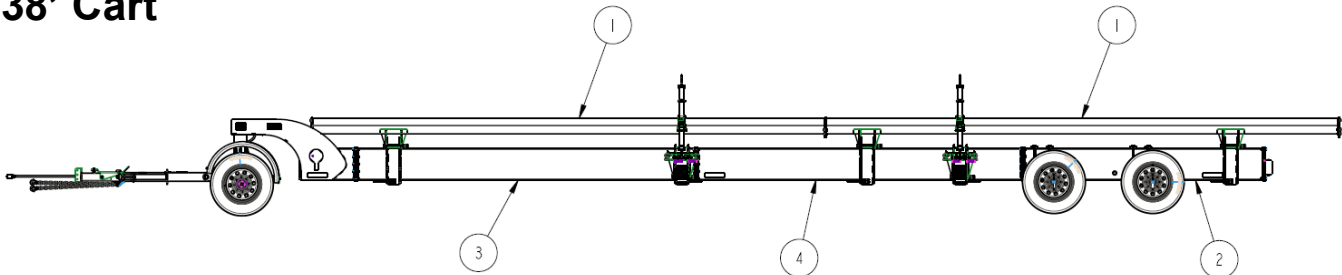
## 32' Cart



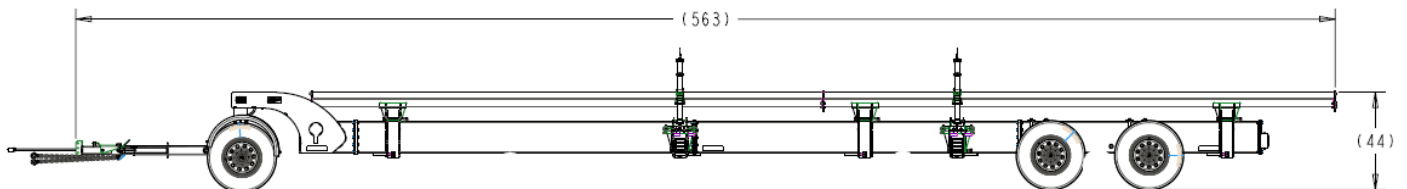
ITEM	PART NO.	DESCRIPTION	QTY
1	8500-222	HEADER REST 32FT CART W.A.	2
2	8500-239	MAIN BEAM W.A., 17 FT	1
3	8500-242	MAIN BEAM W.A., 12.6 FT	1



## 38' Cart



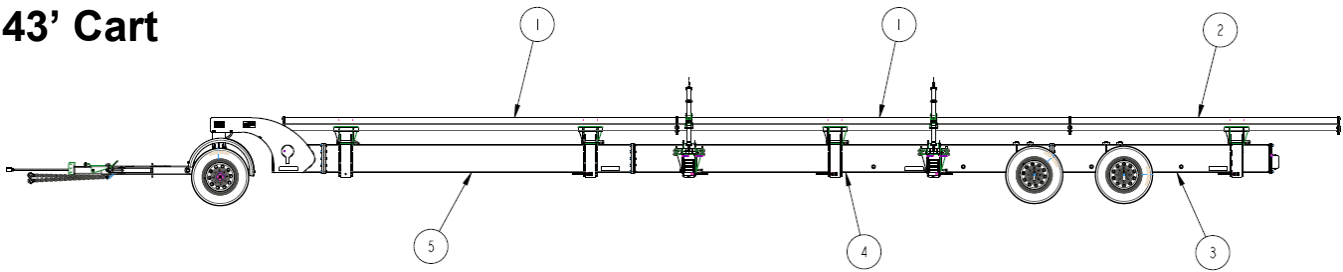
ITEM	PART NO.	DESCRIPTION	QTY
1	8500-221	HEADER REST 38FT CART W.A.	2
2	8500-238	MAIN BEAM W.A., 9 FT	1
3	8500-242	MAIN BEAM W.A., 12.6 FT	1
4	8500-245	MAIN BEAM W.A., 12 FT	1



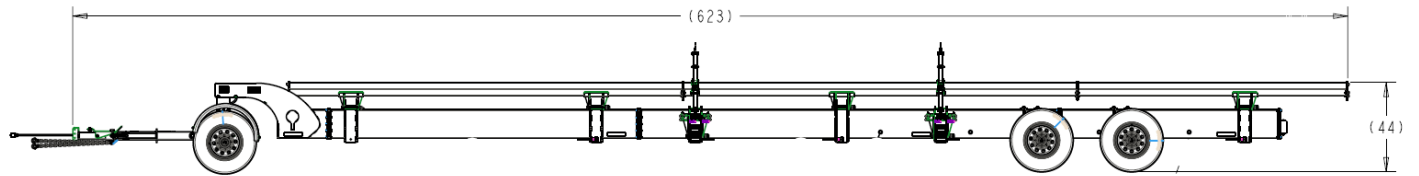


# PART IDENTIFICATION

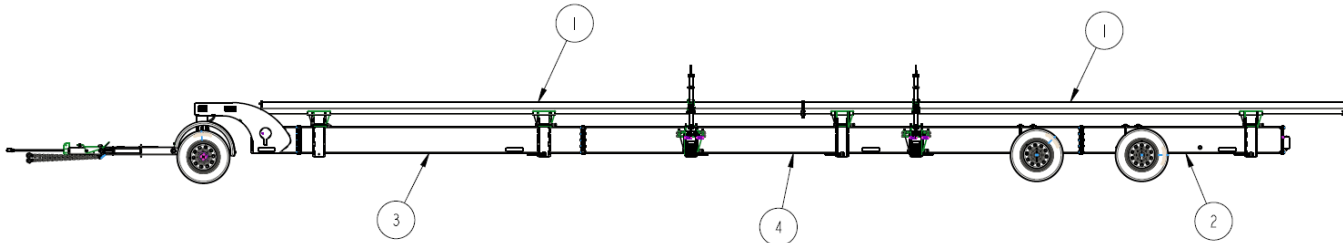
## 43' Cart



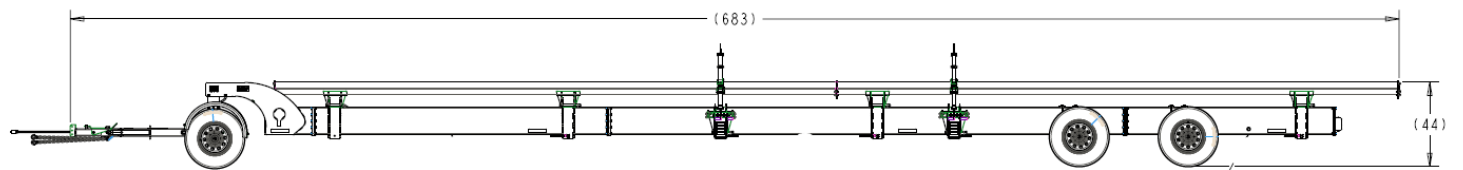
ITEM	PART NO.	DESCRIPTION	QTY
1	8500-222	HEADER REST 32FT CART W.A.	2
2	8500-230	HEADER REST 11FT EXTENSION W.A.	1
3	8500-238	MAIN BEAM W.A., 9 FT	1
4	8500-239	MAIN BEAM W.A., 17 FT	1
5	8500-242	MAIN BEAM W.A., 12.6 FT	1



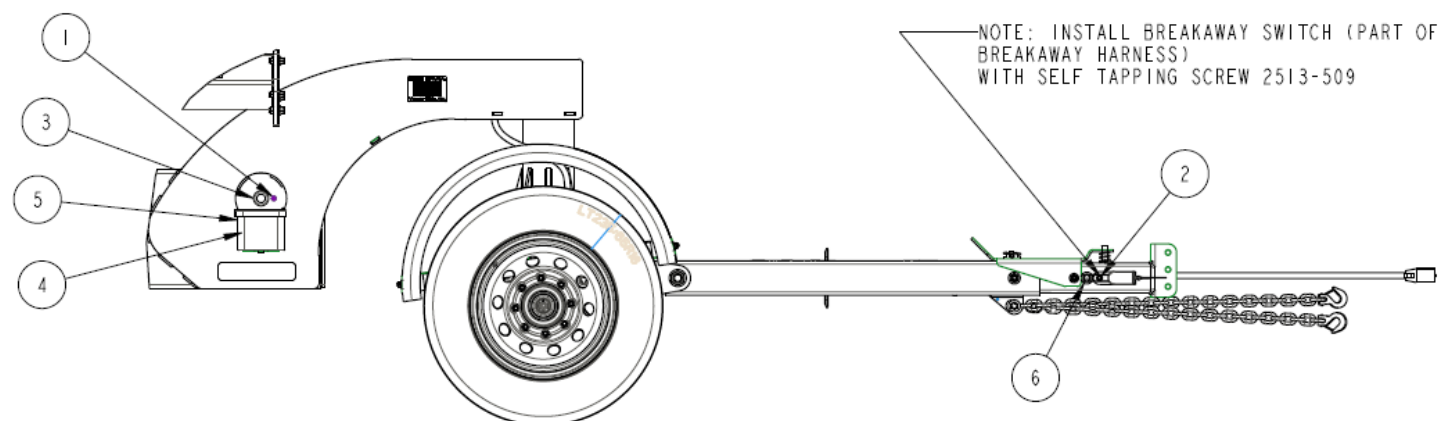
## 48' Cart



ITEM	PART NO.	DESCRIPTION	QTY
1	8500-214	HEADER REST 48FT CART W.A.	2
2	8500-238	MAIN BEAM W.A., 9 FT	1
3	8500-242	MAIN BEAM W.A., 12.6 FT	1
4	8500-244	MAIN BEAM W.A., 22 FT	1



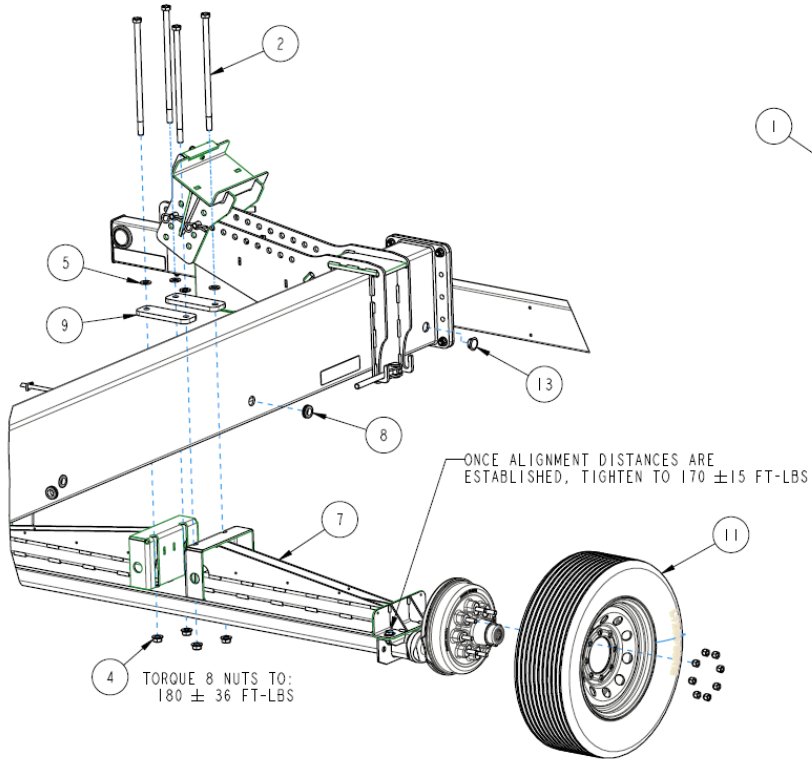
# PART IDENTIFICATION



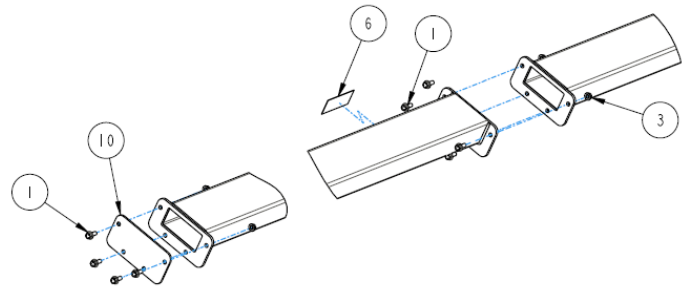
ITEM	PART NO.	DESCRIPTION	QTY
1	2502-156	DR SCREW, 1/4 X 5/8 ZN TYPE D	1
2	2513-509	5/16-18 X .75, HEX WASHER HEAD TAPPING SCREW, TYPE T, STEEL, ZP	1
3	8500-385	1 X 1.375 GROMMET	9
4	8500-450	BREAKAWAY BATTERY	1
5	8500-451	BATTERY BOX	1
6	8500-491	GROMMET	1

## PART IDENTIFICATION

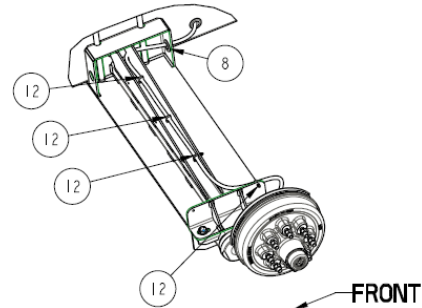
### AXLE MOUNT HARDWARE



### REST BEAM JOINT AND END CAPS



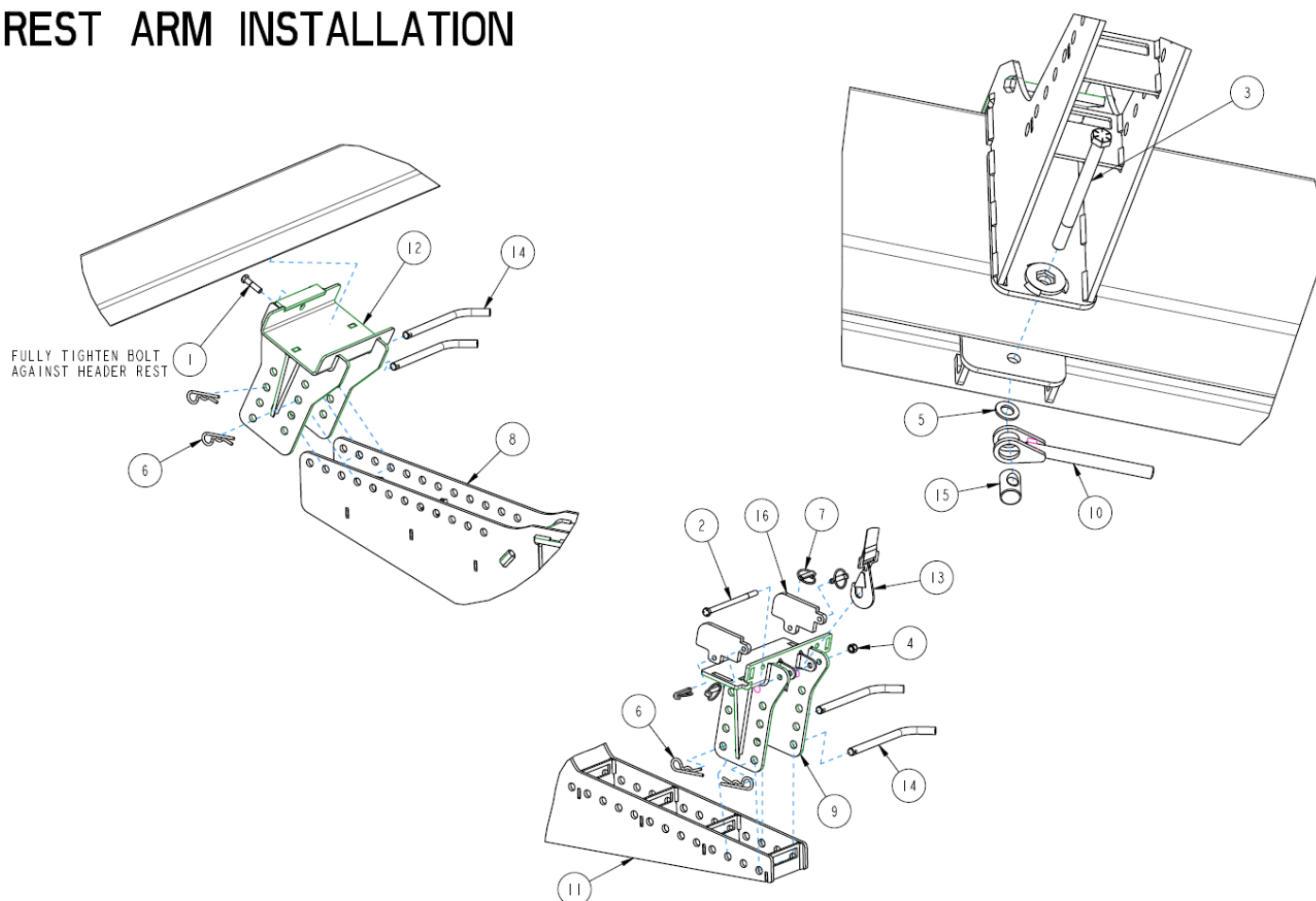
### BRAKE HARNESS ROUTING AND RETAINERS



ITEM	PART NO.	DESCRIPTION	QTY
1	2502-310	1/2-13 X 1 1/4 SERRATED FLANGE HHCS GR5	12
2	2502-429	3/4-10 X 16.5 HHCS GR8, ZP	8
3	2520-361	1/2-13 FLANGE WHZLCK HXNT, GR 5, ZP	12
4	2520-520	3/4-10 FLANGED HEX LOCKNUT, GR8, ZP	8
5	2526-504	3/4 SAE FLATWASHER, ZP	13
6	2565-822	YETTER DECAL	4
7	8500-127	REAR AXLE ASSEMBLY	2
8	8500-385	1 X 1.375 GROMMET	9
9	8500-388	AXLE CLAMP PLATE	4
10	8500-397	END CAP, HEADER REST	2
11	8500-427	TIRE AND WHEEL ASSEMBLY	6
12	8500-476	WIRE HARNESS RETAINER	16
13	8500-478	PUSH IN PLUG	2

# PART IDENTIFICATION

## REST ARM INSTALLATION

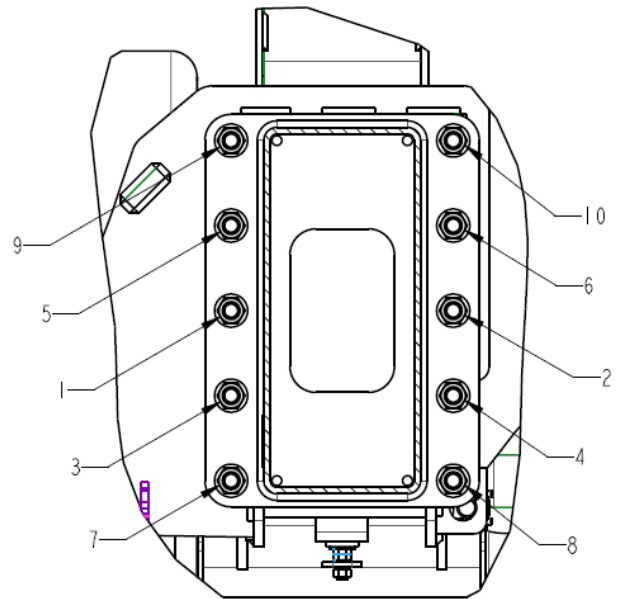
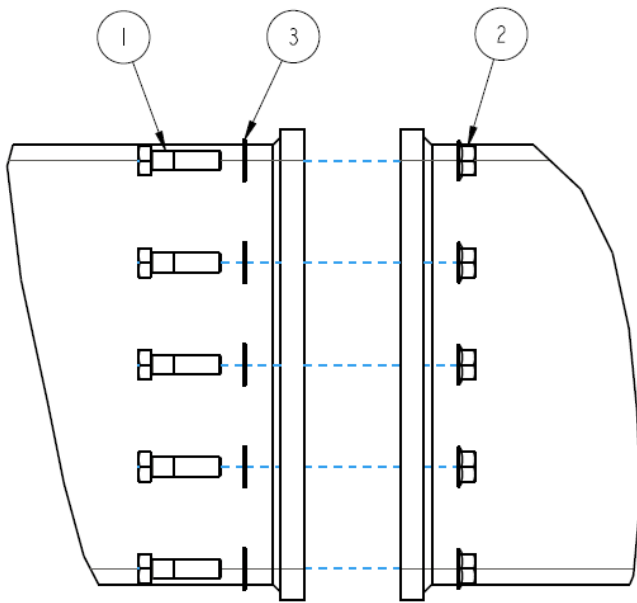


ITEM	PART NO.	DESCRIPTION	QTY
1	2502-351	1/2-13 X 2 HHCS GR.5 ZP	3
2	2502-369	1/2-13 X 8 HHCS GR. 5 ZP	2
3	2502-431	3/4-10 X 9 HHCS GR8, ZP	5
4	2520-363	1/2-13 NYL INSERT LOCKNUT, GR 2	2
5	2526-504	3/4 SAE FLATWASHER, ZP	13
6	2570-452	COTTER PIN, 1/4 X 4 STEEL ZP	10
7	2570-454	KLIK PIN DANUSER #7524	8
8	8500-212	UPPER SUPPORT W.A.	3
9	8500-216	TALL 4 HOLE LOWER HEADER REST W.A.	2
10	8500-217	ADJUSTMENT HANDLE	5
11	8500-227	LOWER SUPPORT W.A.	2
12	8500-236	UPPER HEADER SUPPORT W.A.	3
13	8500-376	2" RATCHET	2
14	8500-377	3/4 DIAMETER PULL PIN	10
15	8500-378	THREADED PIN	5
16	8500-406	SIDE PLATE	4

## PART IDENTIFICATION

# MAIN BEAM JOINT CONNECTION

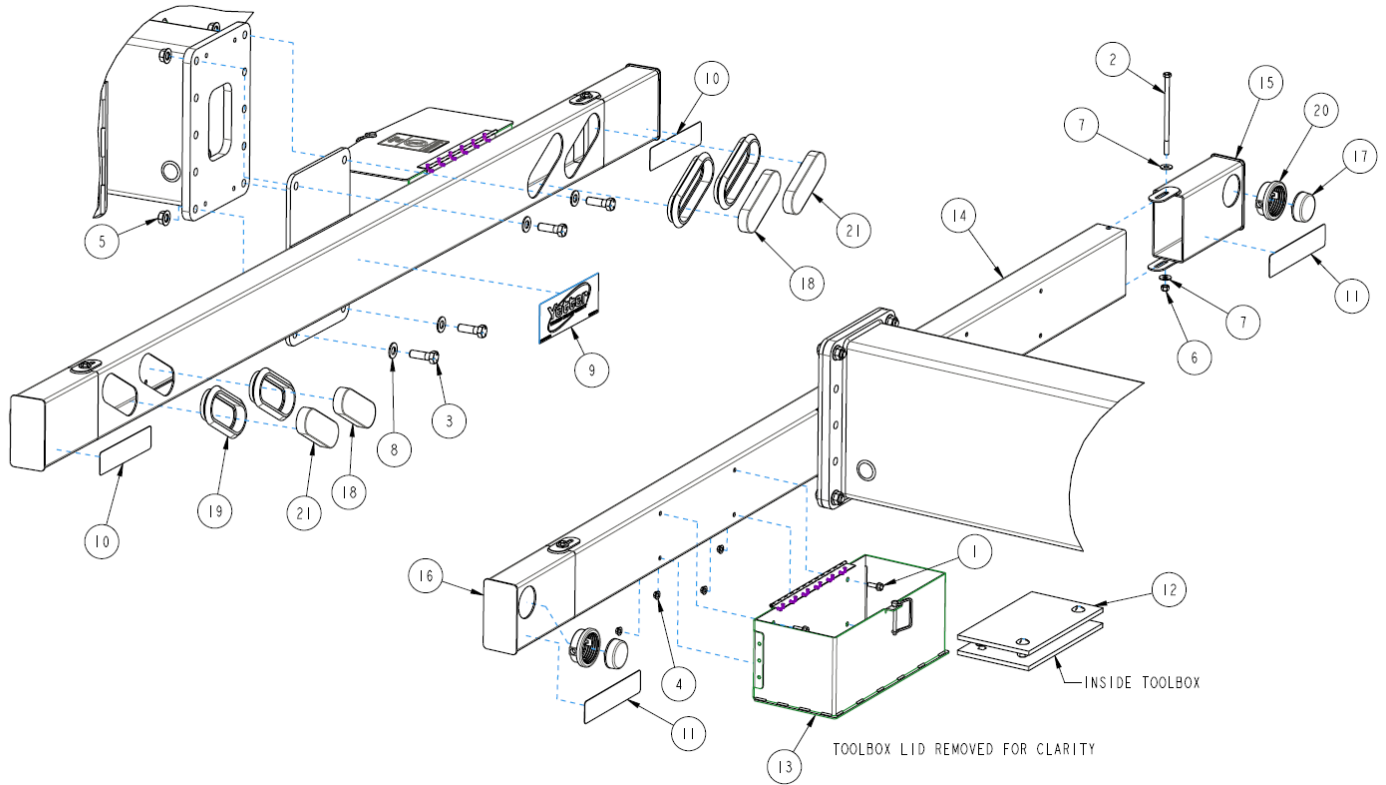
ALL MAIN JOINT FASTENERS  
TORQUE TO 155 +/-15 FT-LBS  
IN THE DEFINED SEQUENCE



ITEM	PART NO.	DESCRIPTION	QTY
1	2502-332	5/8-11 X 2-1/4 HHCS GR5 ZP	20
2	2520-478	5/8-11 SER. FLNG NUT, GR 8, ZP W/THDLOCK	24
3	2526-453	5/8 SAE FLATWASHER ZP	24

# PART IDENTIFICATION

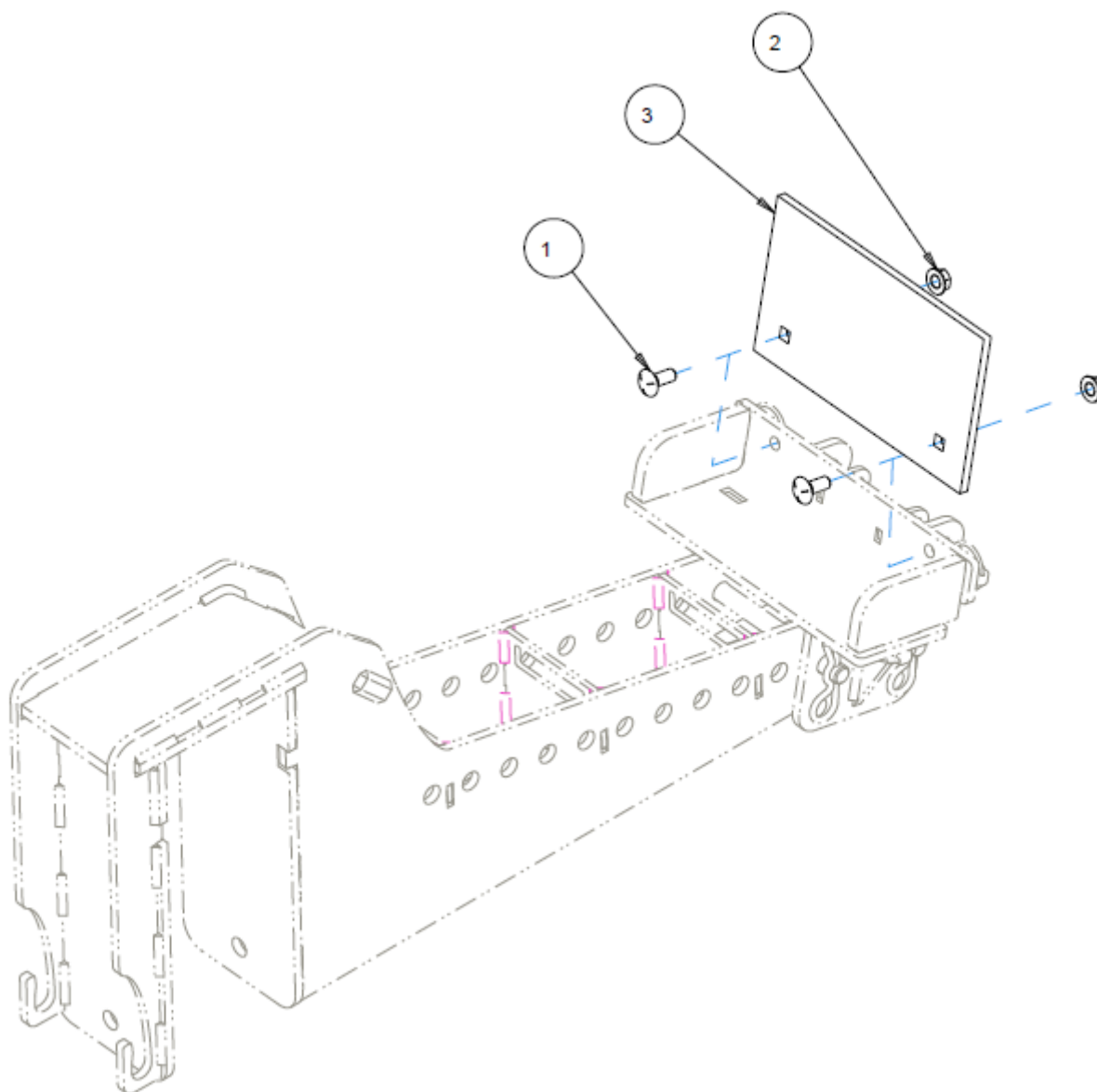
## BUMPER ASSEMBLY



ITEM	PART NO.	DESCRIPTION	QTY
1	2502-221	5/16-18 X 1 HHFS GR5 ZP	4
2	2502-234	HEX CAP SCREW PER ASME B18.2.1, 3/8-16 X 7, SAE J429 GR 5, ZINC PLATED	2
3	2502-391	5/8-11 X 2 HHCS GR 5 ZP	4
4	2520-206	5/16-18 FLANGE LOCK NUT	4
5	2520-478	5/8-11 SER. FLNG NUT, GR 8, ZP W/THDLOCK	24
6	2520-601	3/8-16 HEX TOP LOCK, GR. C, ZP	2
7	2526-251	3/8 STANDARD FLATWASHER ZP	21
8	2526-453	5/8 SAE FLATWASHER ZP	24
9	2565-058	YET FRM EQUI DE 3-7/16X10-5/16	1
10	2565-459	RED REFLECTOR, 2 X 9	3
11	2565-813	YELLOW REFLECTOR, 2 X 9	8
12	8500-109	CRADLE EXTENSION KIT FOR PLATFORM HEADS	1
13	8500-118	TOOLBOX ASSEMBLY	1
14	8500-246	BUMPER W.A.	1
15	8500-249	LEFT BUMPER END W.A.	1
16	8500-250	RIGHT BUMPER END W.A.	1
17	8500-370	AMBER MARKER LIGHT	2
18	8500-371	LED TAIL LIGHT	2
19	8500-386	6.5 X 2.25 OVAL GROMMET	4
20	8500-387	GROMMET, MARKER	2
21	8500-457	AMBER LAMP, OVAL, LED	2

# PART IDENTIFICATION

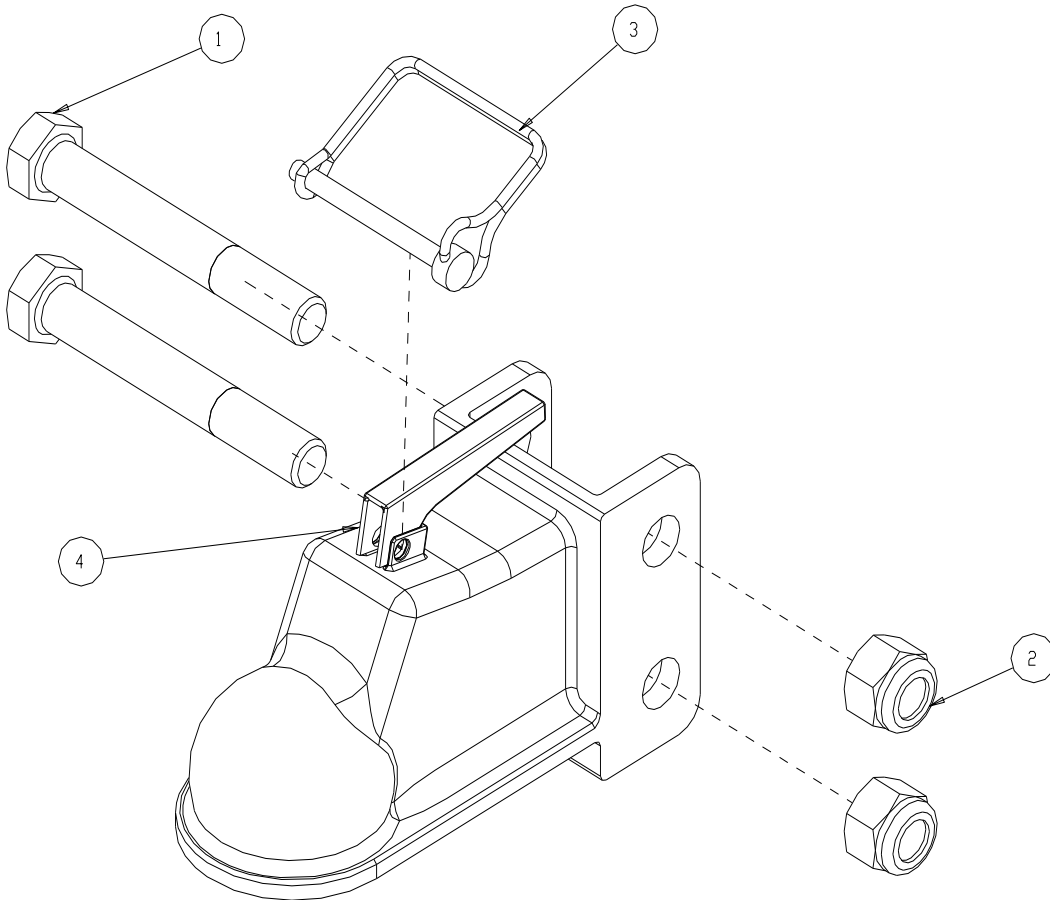
## 8500-109 CRADLE EXTENSION



ITEM	PART#	DESCRIPTION	QTY
1	2505-337	1/2-13 X 1 1/4 CARBLT G5ZP	4
2	2520-361	1/2-13FLANGE WHZLCK HXNT, GR 5, ZP	4
3	8500-408	PLATE, BACKING	2

# PART IDENTIFICATION

## 8500-144 BALL HITCH 2-5/16"

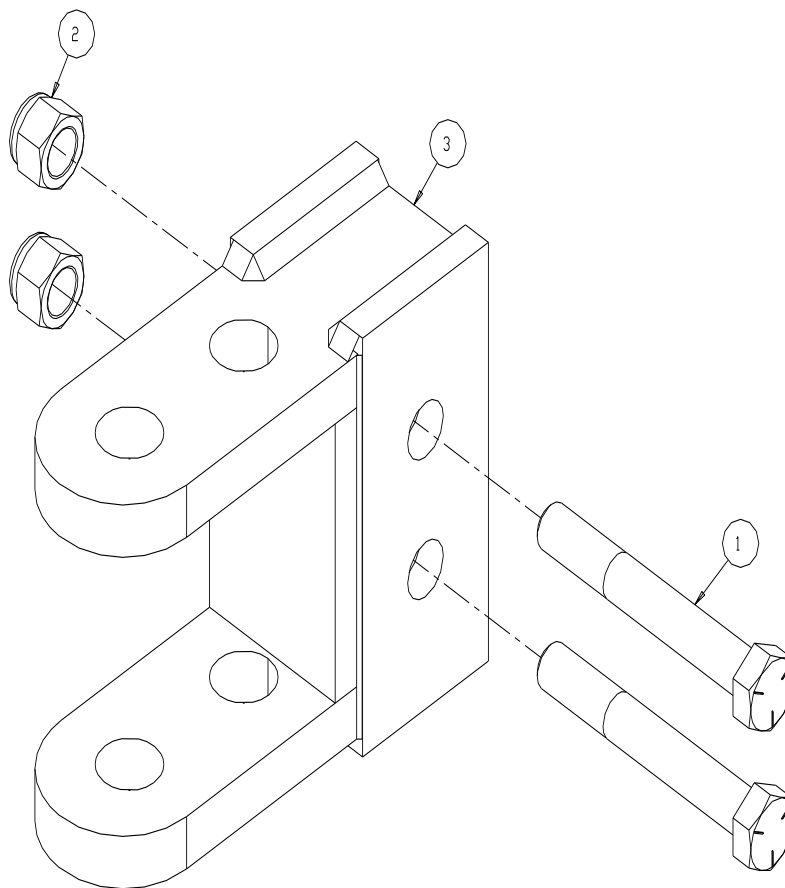


ITEM	PART NO.	DESCRIPTION	QTY
1	2502-334	5/8-11 X 4-1/2 HHCS GR5 ZP	2
2	2520-473	5/8-11 NYLON LOCK NUT GR B, ZP	2
3	2570-456	RETAINER PIN, ZP	1
4	8500-404	BALL HITCH 2-5/16", DEMCO	1



# PART IDENTIFICATION

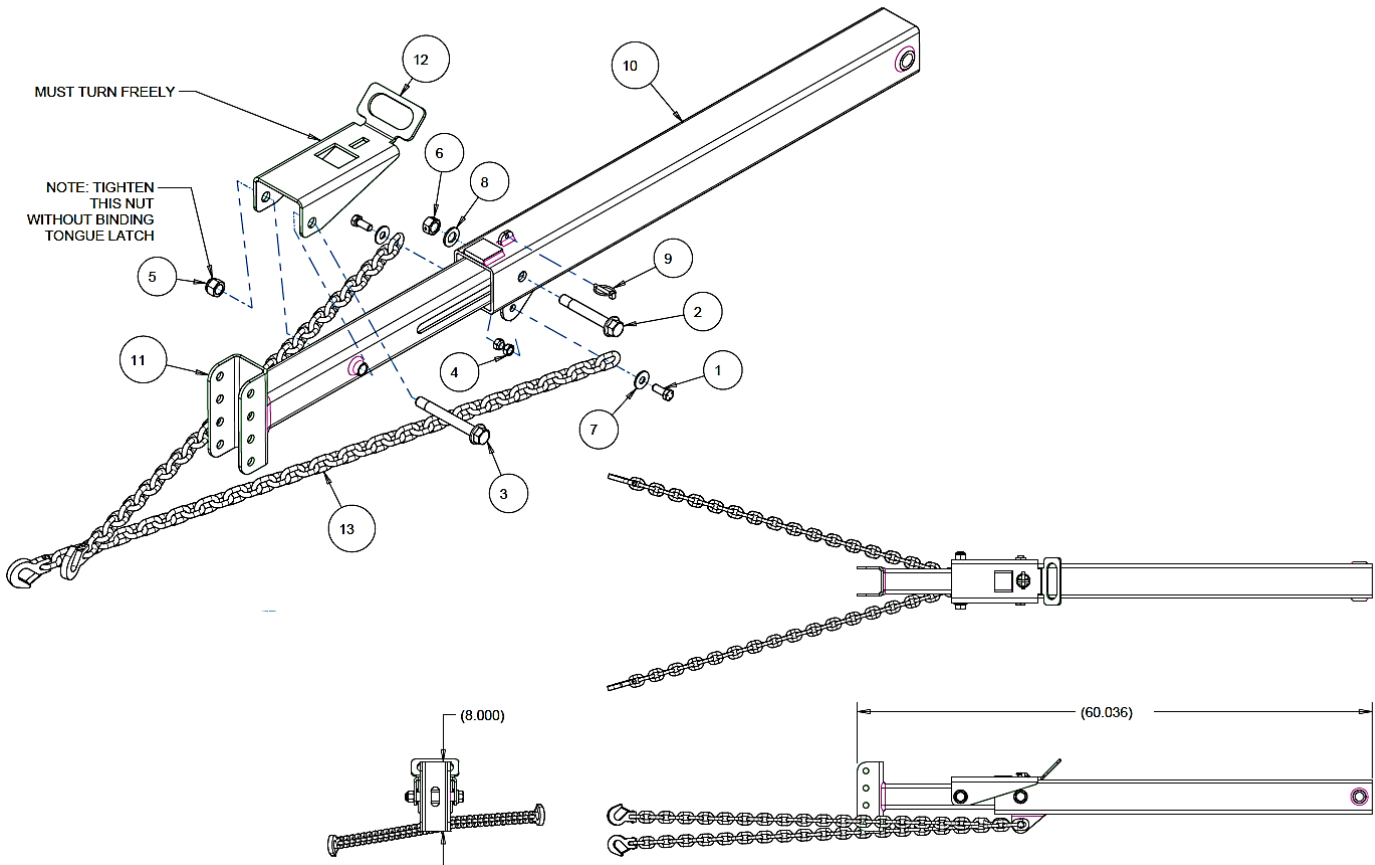
## 8500-166 CLEVIS HITCH



ITEM	PART NO.	DESCRIPTION	QTY
1	2502-334	5/8-11 X 4-1/2 HHCS GR5 ZP	2
2	2520-473	5/8-NYL INSERT LOCKNUT ZYD	2
3	8500-206	CLEVIS HITCH W.A.	1

# PART IDENTIFICATION

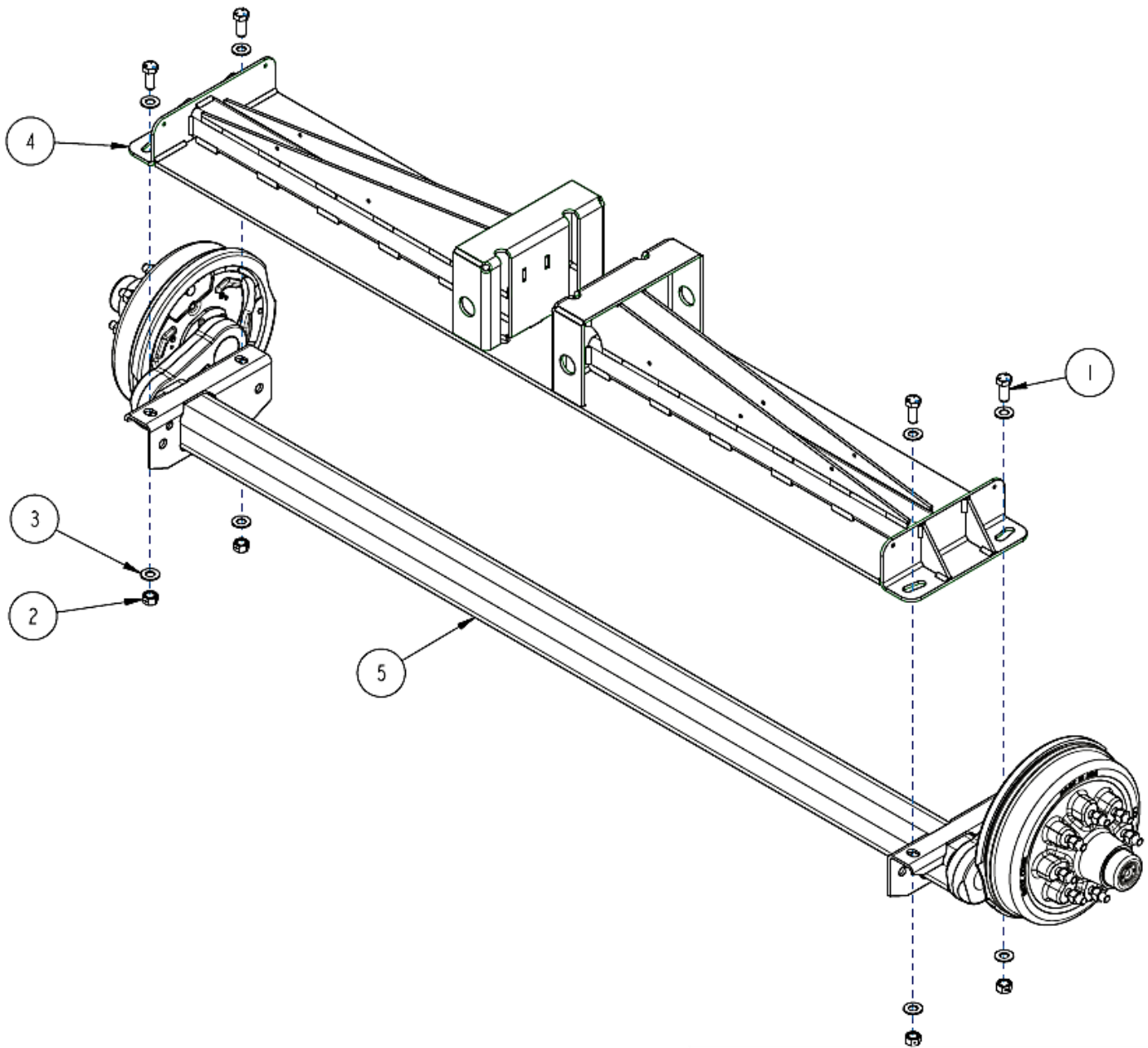
## 8500-100 – TONQUE ASSEMBLY



ITEM	PART NO.	DESCRIPTION	QTY
1	2502-293	1/2-13 X 1-1/4 HHCS GR5 ZP	2
2	2502-425	3/4-10 X 5 HHFS GR8, ZP	1
3	2502-426	3/4-10 X 6 HHFS GR8, ZP	1
4	2520-362	1/2-13 HEX LOK NUT, GR C, ZP	2
5	2520-516	3/4-10 NYLON INSERT LCKNT, GR 2, ZP	1
6	2520-518	3/4-10 LOCK HEX NUT, GR 8, ZP	1
7	2526-351	1/2 STANDARD FLATWASHER ZP	2
8	2526-504	3/4 SAE FLATWASHER, ZP	1
9	2570-458	1/4 X 1.25 LOCKING PIN, ZP	1
10	8500-204	MAIN TONGUE W.A.	1
11	8500-205	EXTENDABLE TONGUE W.A.	1
12	8500-328	TONGUE LATCH	1
13	8500-332	HEAD CART SAFETY CHAIN ASS'Y	2

# PART IDENTIFICATION

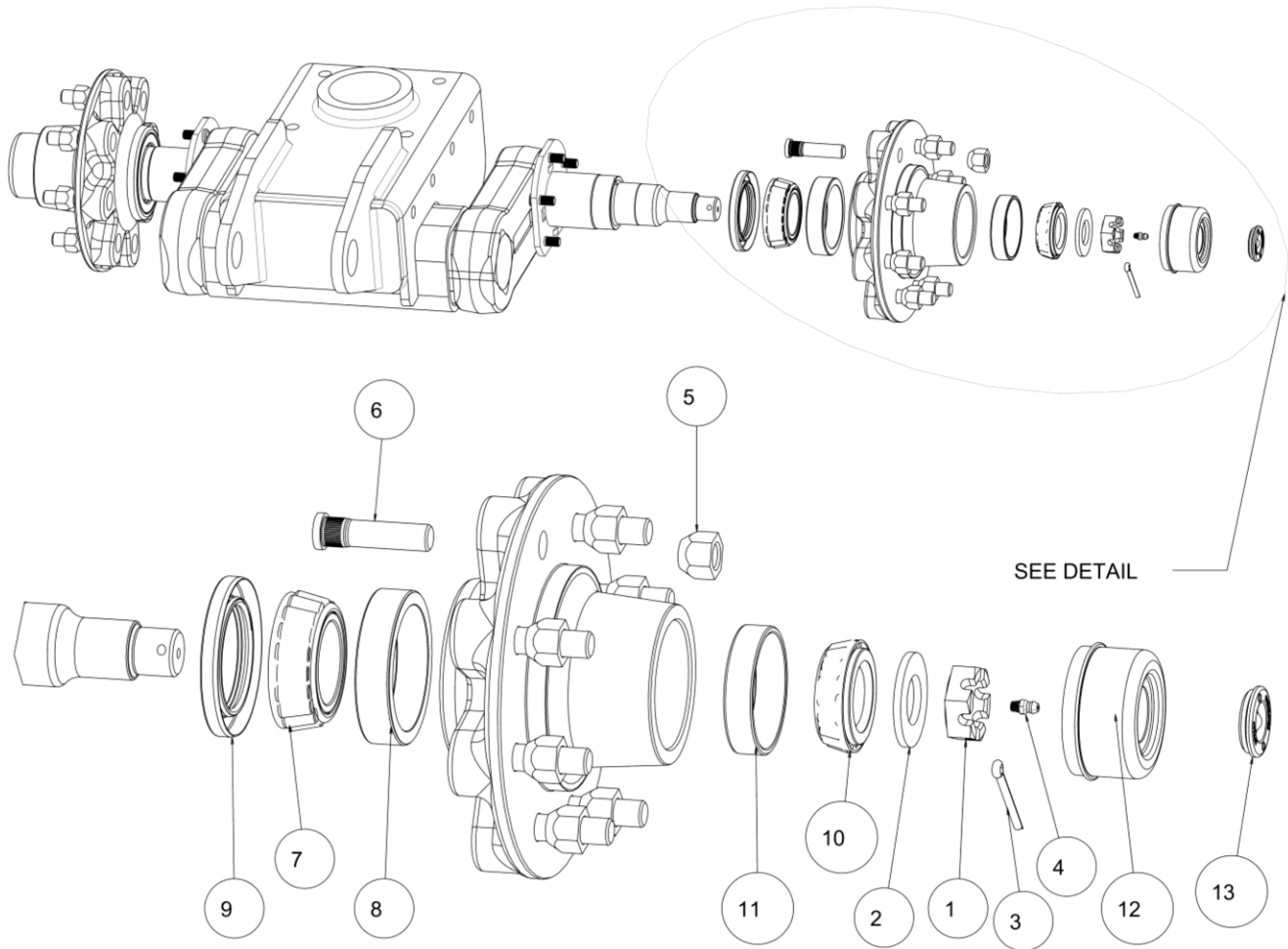
## 8500-101 – Rear Axle Assembly



ITEM	PART NO.	DESCRIPTION	QTY
1	2502-319	5/8-11 X 1 1/2 HHCS GR5 ZP	4
2	2520-459	5/8-11 LOCK HEX NUT, GR B, ZP	4
3	2526-453	5/8 SAE FLATWASHER ZP	8
4	8500-241	AXLE MOUNT W.A.	1
5	8500-345	7000 LB TORSION AXLE	1

# PART IDENTIFICATION

## 8500-203 – Front Axle Assembly

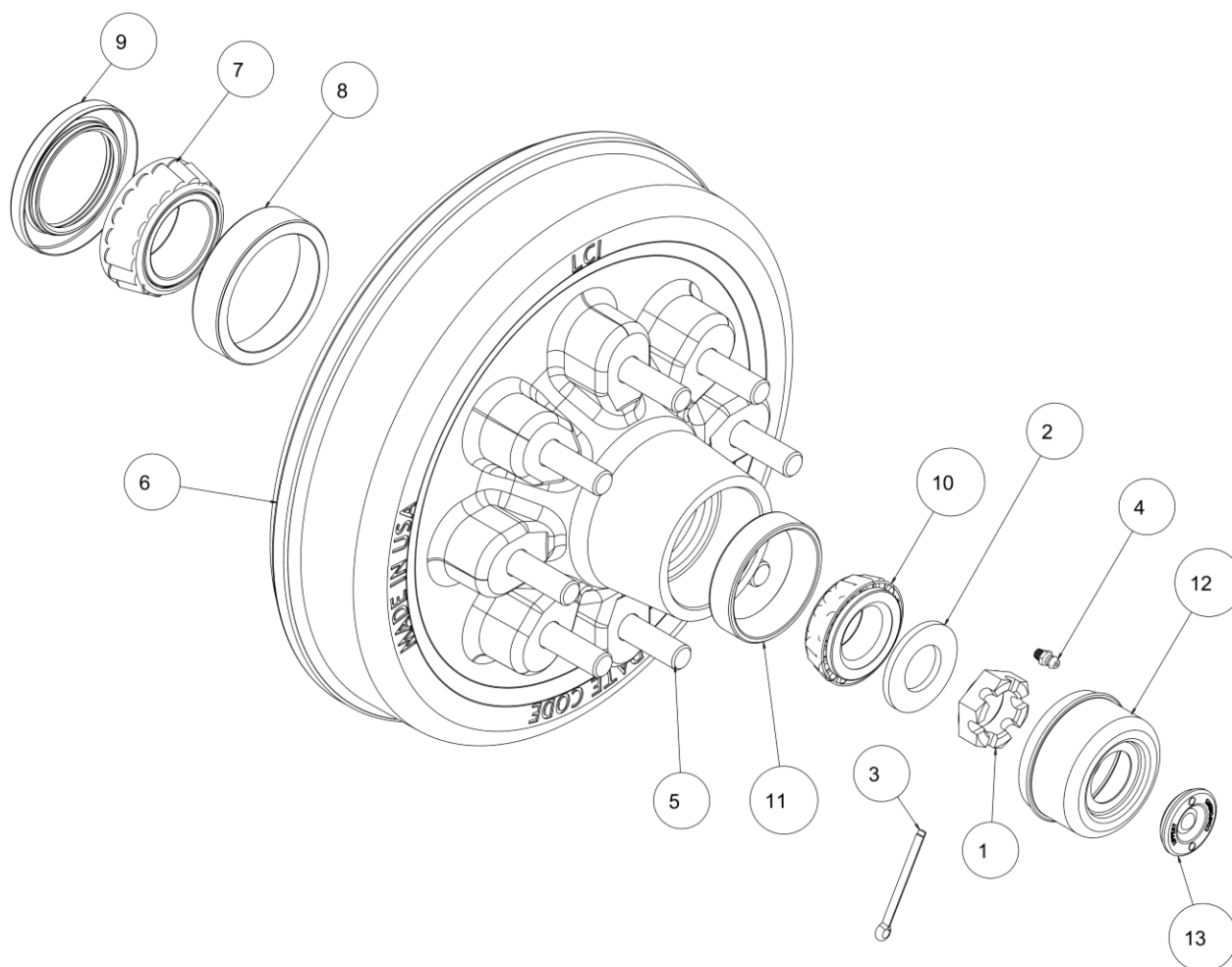


ITEM	PART #	DESCRIPTION	QTY
1	2520-569	NUT, 1-14 CASTLE	2
2	2526-545	SPINDLE WASHER - HEADCART	2
3	2531-124	COTTER PINS	2
4	2533-110	1/4-28 ZERK STRAIGHT SELF-TAP	2
5	8500-510	9/16-18 LUG NUT, 60 DEGREE	16
6	8500-511	9/16 STUD	16
7	8500-513	INNER TAPERED ROLLER BEARING	2
8	8500-514	INNER BEARING RACE	2
9	8500-515	GREASE SEAL, DOUBLE LIP	2
10	8500-516	OUTER TAPERED ROLLER BEARING	2
11	8500-517	OUTER BEARING RACE	2
12	8500-519	DUST CAP	2
13	8500-520	RUBBER PLUG	2

# PART IDENTIFICATION

## 8500-120 – Rear Bearing and Drum Replacement Kit

### One per Wheel

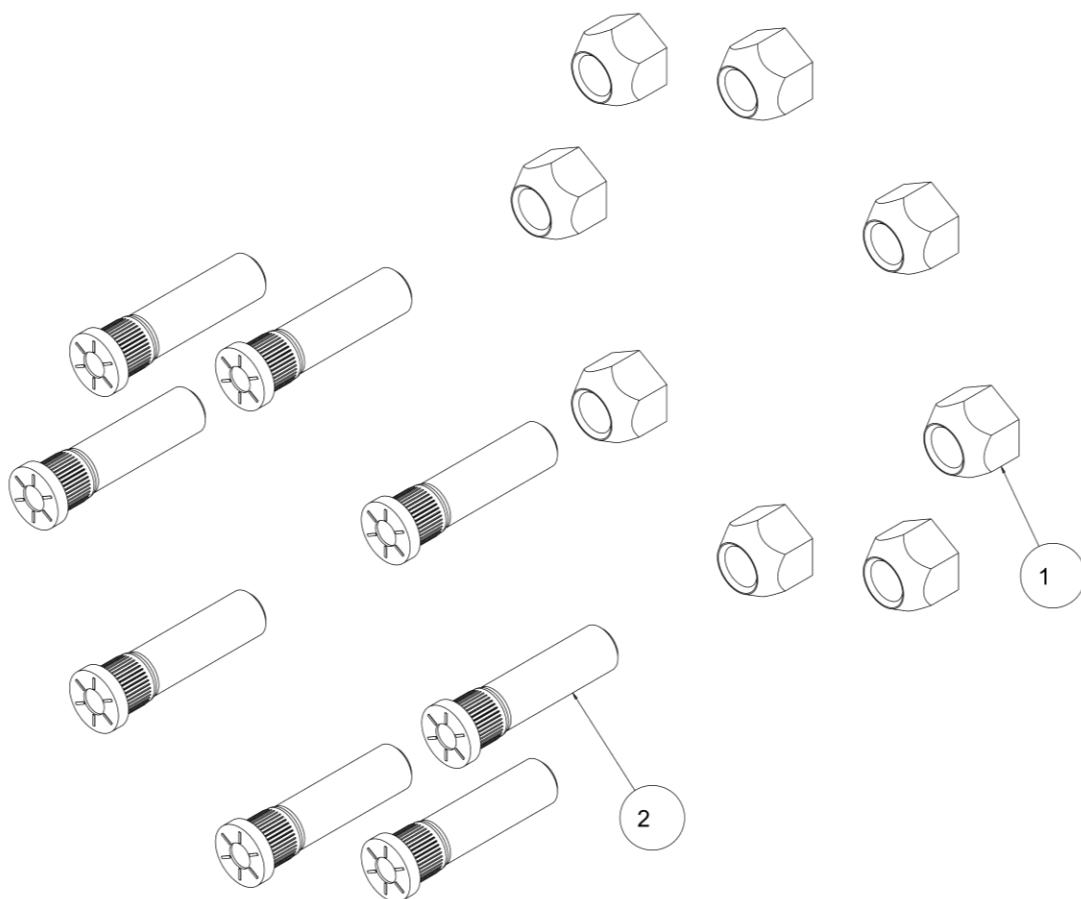


ITEM	PART #	DESCRIPTION	QTY
1	2520-569	NUT, 1-14 CASTLE	1
2	2526-545	SPINDLE WASHER - HEADCART	1
3	2531-124	COTTER PINS	1
4	2533-110	1/4-28 ZERK STRAIGHT SELF-TAP	1
5	8500-511	9/16 STUD	8
6	8500-512	BRAKE DRUM	1
7	8500-513	INNER TAPERED ROLLER BEARING	1
8	8500-514	INNER BEARING RACE	1
9	8500-515	GREASE SEAL, DOUBLE LIP	1
10	8500-516	OUTER TAPERED ROLLER BEARING	1
11	8500-517	OUTER BEARING RACE	1
12	8500-519	DUST CAP	1
13	8500-520	RUBBER PLUG	1

# PART IDENTIFICATION

## 8500-121 – Lugnut and Stud Replacement Kit

### One per Wheel

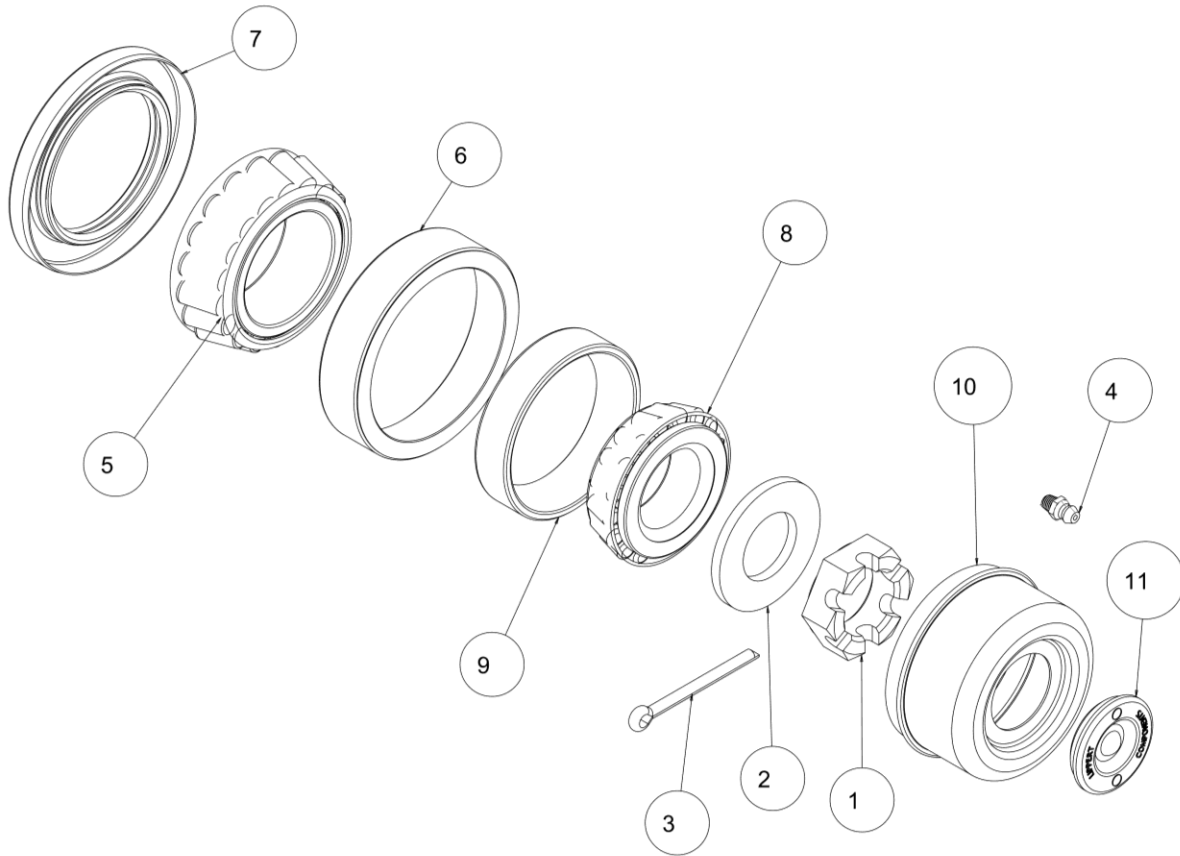


ITEM	PART #	DESCRIPTION	QTY
1	8500-510	9/16-18 LUG NUT, 60 DEGREE	8
2	8500-511	9/16 STUD	8

# PART IDENTIFICATION

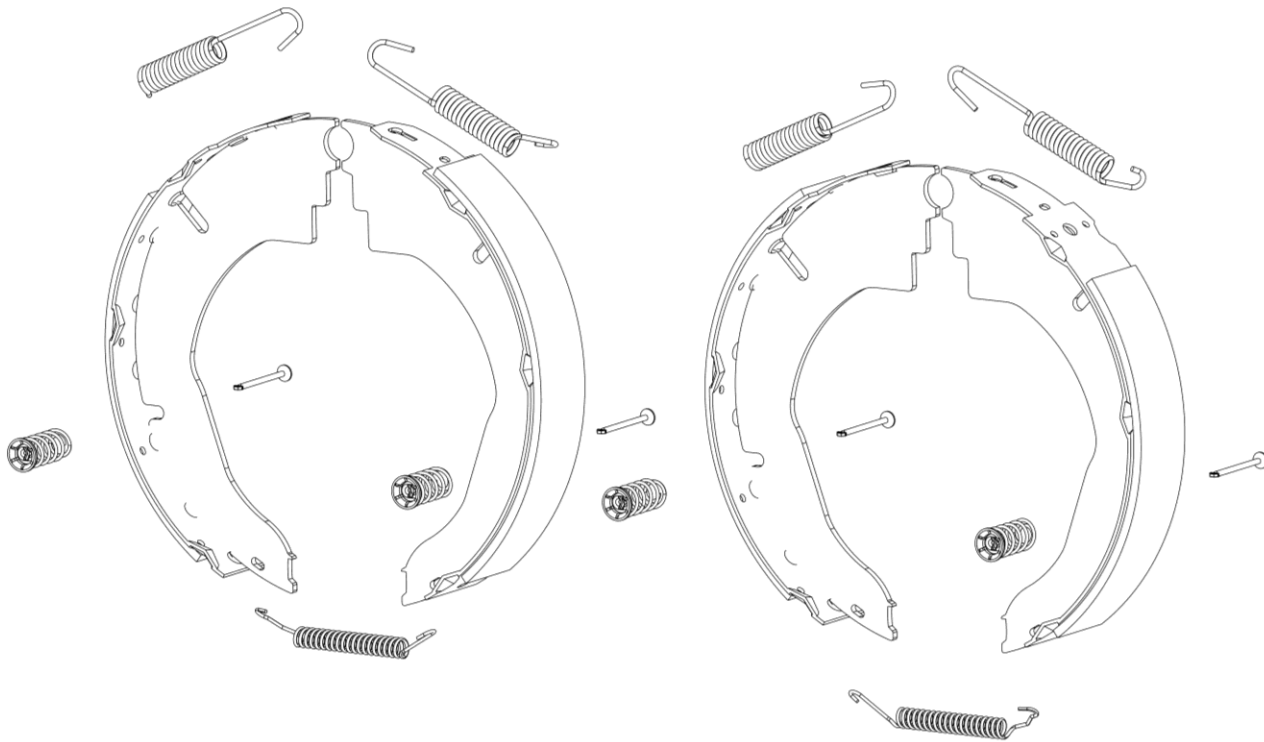
## 8500-122 – Front and Rear Bearing Replacement Kit

### One per Wheel



ITEM	PART #	DESCRIPTION	QTY
1	2520-569	NUT, 1-14 CASTLE	1
2	2526-545	SPINDLE WASHER - HEADCART	1
3	2531-124	COTTER PINS	1
4	2533-110	1/4-28 ZERK STRAIGHT SELF-TAP	1
5	8500-513	INNER TAPERED ROLLER BEARING	1
6	8500-514	INNER BEARING RACE	1
7	8500-515	GREASE SEAL, DOUBLE LIP	1
8	8500-516	OUTER TAPERED ROLLER BEARING	1
9	8500-517	OUTER BEARING RACE	1
10	8500-519	DUST CAP	1
11	8500-520	RUBBER PLUG	1

**PART IDENTIFICATION**  
**8500-123 – Brake Replacement Kit**  
**One per Rear Axle**



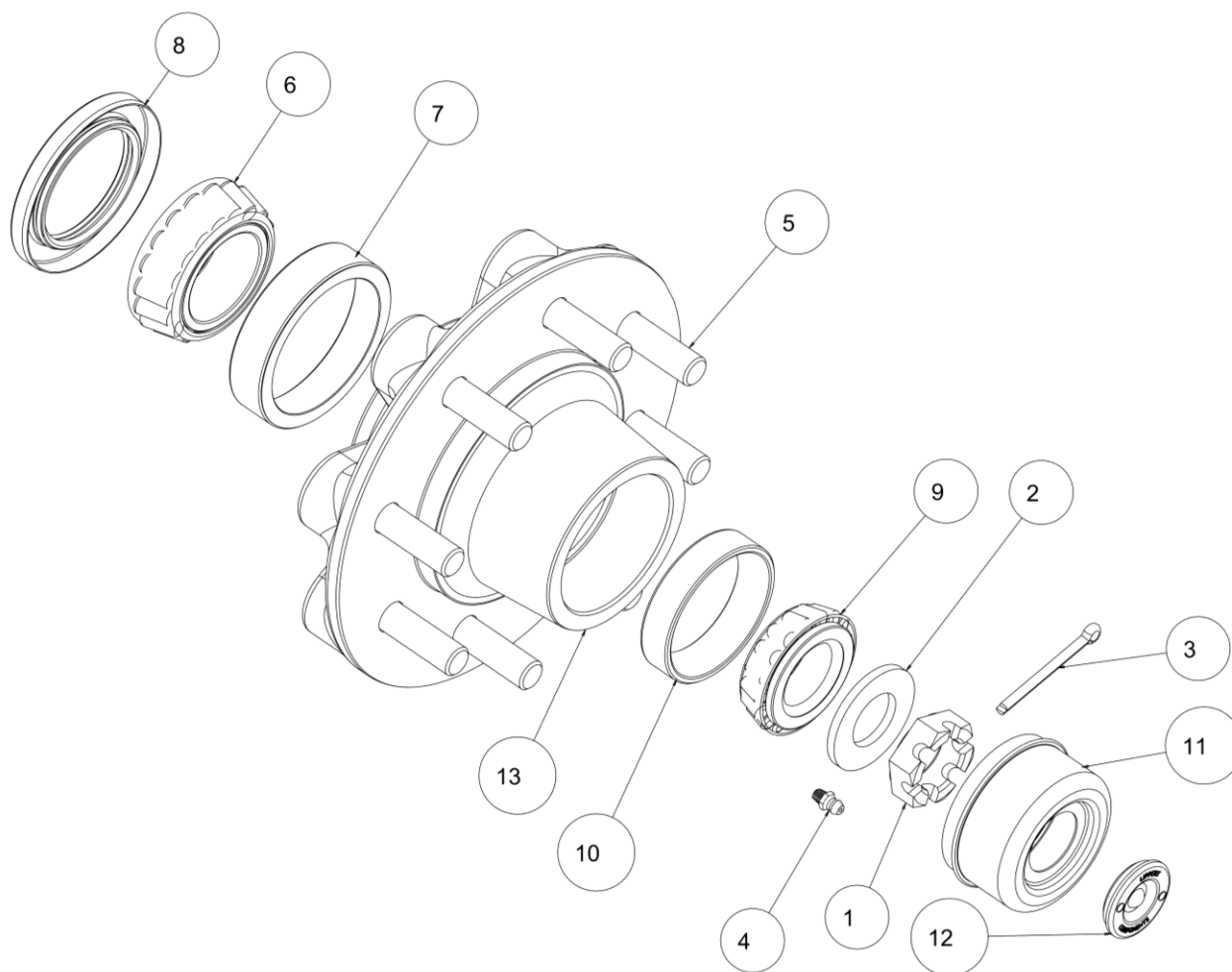
KIT INCLUDES 2 SETS OF BRAKE SHOES, ALL SPRINGS, AND MOUNTING CLIPS



# PART IDENTIFICATION

## 8500-124 – Front Bearing Replacement Kit

### One per Wheel

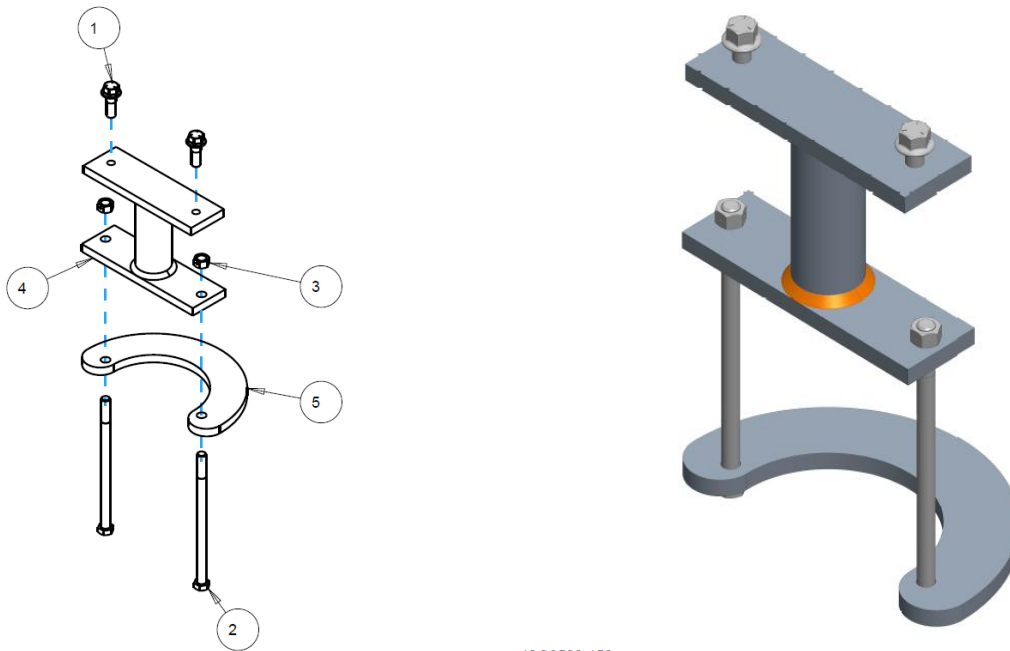


ITEM	PART #		DESCRIPTION	QTY
1	2520-569		NUT, 1-14 CASTLE	1
2	2526-545		SPINDLE WASHER - HEADCART	1
3	2531-124		COTTER PINS	1
4	2533-110		1/4-28 ZERK STRAIGHT SELF-TAP	1
5	8500-511		9/16 STUD	8
6	8500-513		INNER TAPERED ROLLER BEARING	1
7	8500-514		INNER BEARING RACE	1
8	8500-515		GREASE SEAL, DOUBLE LIP	1
9	8500-516		OUTER TAPERED ROLLER BEARING	1
10	8500-517		OUTER BEARING RACE	1
11	8500-519		DUST CAP	1
12	8500-520		RUBBER PLUG	1
13	8500-526		FRONT HUB	1

# PART IDENTIFICATION

## OPTIONAL EQUIPMENT

### 8500-150 SPARE TIRE CARRIER

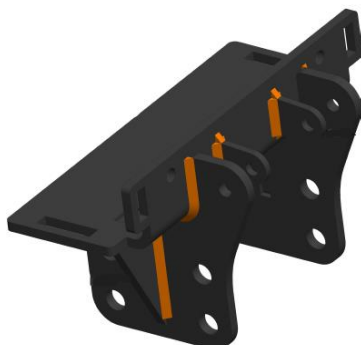


ISO8500-150

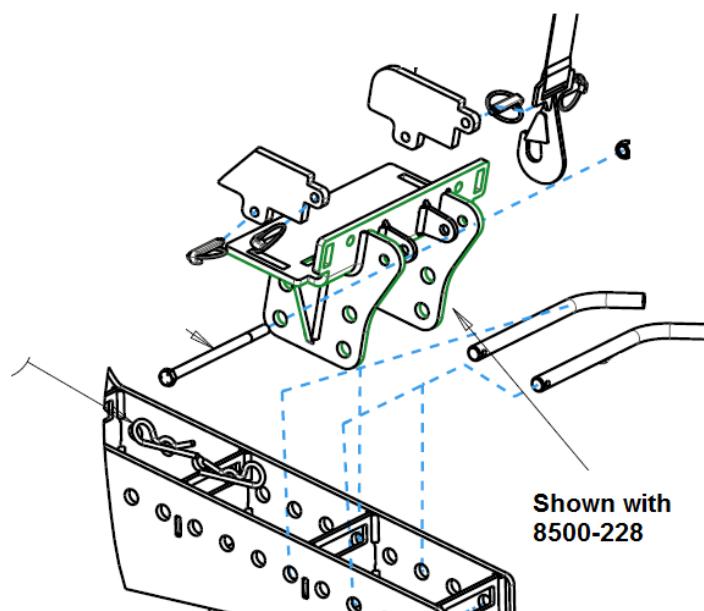
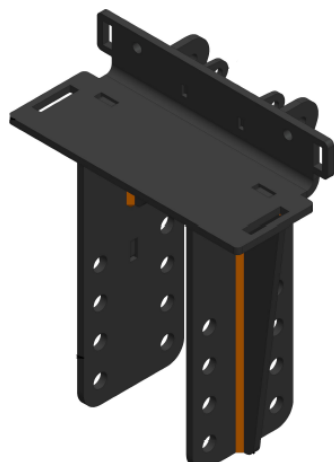
ITEM	PART NO.	DESCRIPTION	QTY
1	2502-307	1/2-13 X 1-1/2 FLANGE SERRATED HEX BOLT PLATED GR 5	2
2	2502-375	1/2-13 X 8-1/2 HHCS GR 5 ZP	2
3	2520-357	1/2-13 LOCK HEX NUT, GR A, ZP	2
4	8500-229	SPARE TIRE MOUNT W.A.	1
5	8500-420	CLAMP PLATE	1



**PART IDENTIFICATION**  
**OPTIONAL EQUIPMENT**  
**8500-228 LOWER HEAD REST “SHORT”**  
4” Shorter than stock



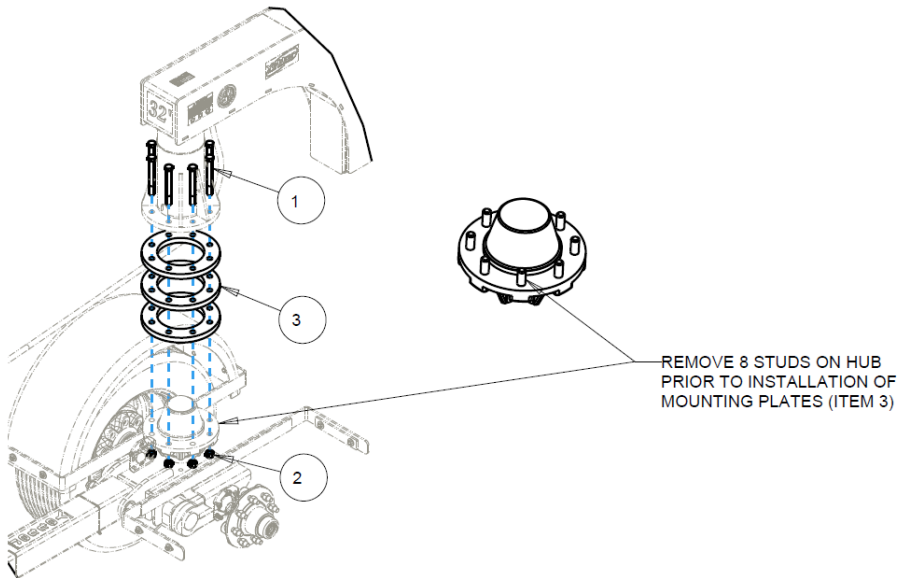
**8500-232 LOWER HEAD REST “TALL”**  
4” Taller than stock



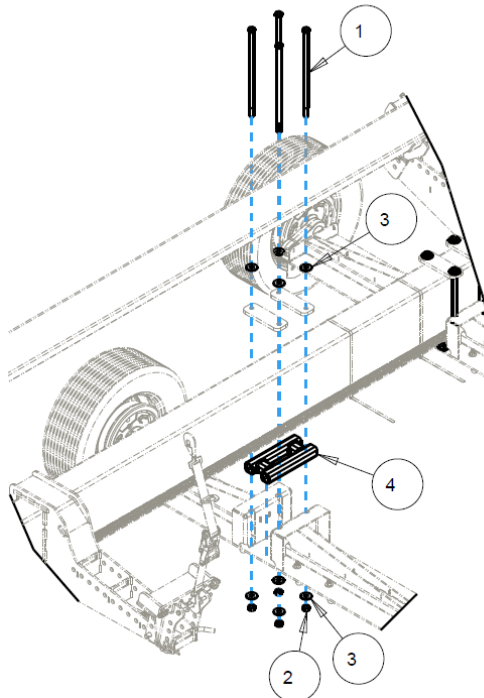
Shown with  
8500-228

# PART IDENTIFICATION OPTIONAL EQUIPMENT 8500-151 2" HEAD CART LIFT KIT

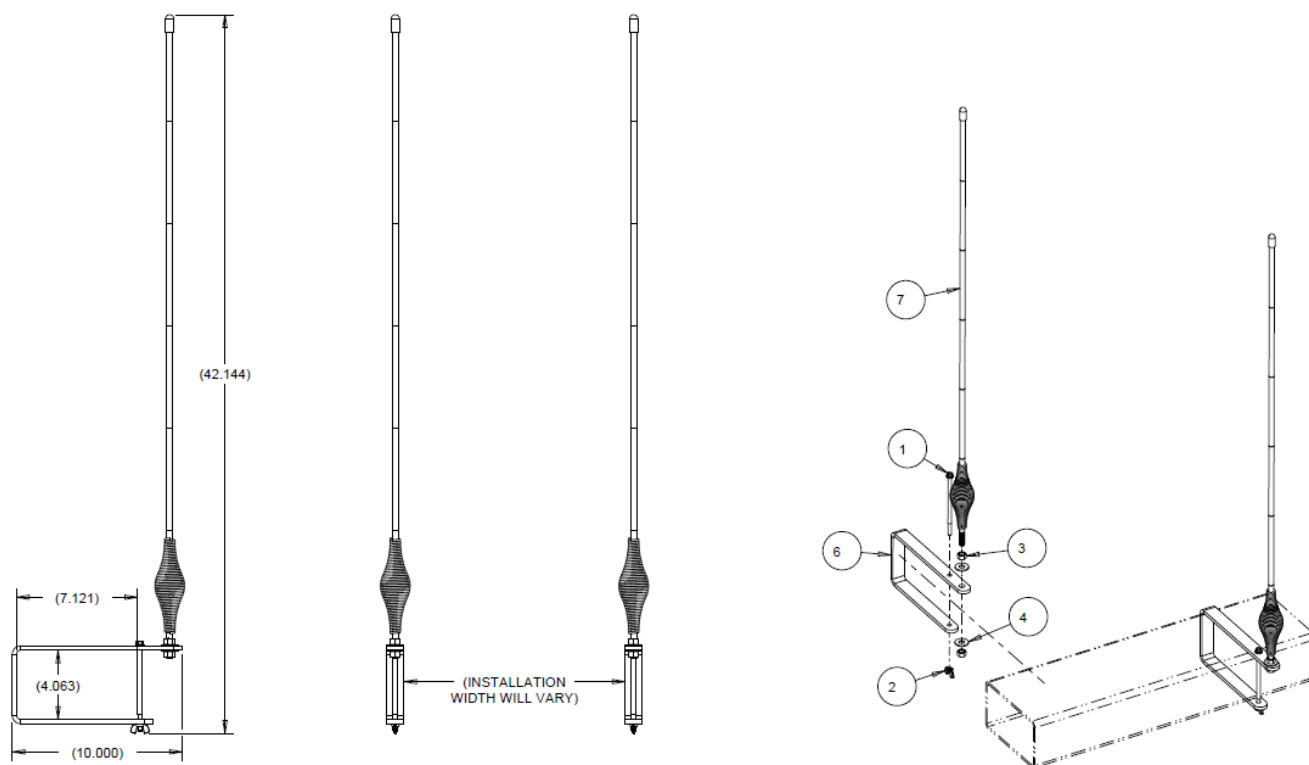
ITEM	PART NO.	DESCRIPTION	QTY
1	2502-356	5/8-11 X 5-1/2" GR. 8 HHCS ZP	8
2	2520-370	WHEEL NUT #N913557	8
3	8500-303	MOUNTING PLATE, KING PIN	3



ITEM	PART NO.	DESCRIPTION	QTY
1	2502-432	3/4-10 x 18-1/2 HHCS GR8 ZP	8
2	2520-518	3/4-10 LOCK HEX NUT, GR 8, ZP	8
3	2526-501	3/4 STANDARD FLATWASHER ZP	16
4	8500-231	REAR AXLE 2" LIFT BLOCK W.A.	2



# PART IDENTIFICATION OPTIONAL EQUIPMENT 8500-001 MARKER POLE KIT



ITEM	PART NO.	DESCRIPTION	QTY
1	2502-153	1/4-20 X 5 HHFS GR5, ZP	2
2	2520-161	1/4-20 WING NUT, ZP	2
3	2520-251	3/8-16 HEX NUT ZP	4
4	2526-251	3/8 STANDARD FLATWASHER ZP	4
5	2565-824	38" X 6" X 6", 200# CAP. CORRUGATED CARDBOARD BOX, PLAIN	1
6	8500-382	POLE MARKER MOUNT	2
7	8500-383	CUSTOM ORANGE MARKER	2







## NOTES



A Tradition of Solutions since 1930

Yetter Farm Equipment Co

PO BOX 358 109 S. McDonough

Colchester, IL 62326-0358

Phone: 309-776-4111

Toll Free: 800-447-5777

Email: [info@yetterco.com](mailto:info@yetterco.com)

For updated models and manuals visit the Yetter website:

[www.yetterco.com](http://www.yetterco.com)

© Yetter Farm Equipment Co. All Rights Reserved

2565-799\_G 09/2024