



OWNER'S MANUAL  
PART IDENTIFICATION  
2565-989\_REV\_G 05/2026  
**Furrow Max**

**6200-070, 6200-071, 6200-072, 6200-073, 6200-080**



**YETTER MANUFACTURING CO.**

Founded 1930

Colchester, IL 62326

Toll free: (800)447-5777.

Fax: (309)776-3222

Website: [yetterco.com](http://yetterco.com)

E-mail: [info@yetterco.com](mailto:info@yetterco.com)

**YETTER**


# FOREWORD


You've just joined an exclusive but rapidly growing club.  
For our part, we want to welcome you to the group and thank you for buying a Yetter product.


We hope your new Yetter products will help you achieve both goals-increase your productivity and increase your efficiency so that you may generate more profit.


This operator's manual has been designed into four major sections: Foreword, Safety Precautions, Installation Instructions and Parts Breakdown.

This **SAFETY ALERT SYMBOL** indicates important safety messages in the manual. When you see this symbol, be alert to the possibility of **PERSONAL INJURY** and carefully read the message that follows.

 **DANGER:** Indicates an imminently hazardous situation which, if not avoided "will" result in death or serious injury. This signal word is to be limited to the most extreme situations

 **WARNING:** Indicates a potentially hazardous situation which, if not avoided, "could" result in death or serious injury.

 **CAUTION:** Indicates a potentially hazardous situation, which if not avoided, "may" result in minor or moderate injury. It may also be used to alert against unsafe practices.

 **NOTICE:** Indicates information considered important, but not hazard related (e.g., messages relating to property damage).

It is the responsibility of the user to read the operator's manual and comply with the safe and correct operating procedure and to lubricate and maintain the product according to the maintenance schedule in the operator's manual.

The user is responsible for inspecting his machine and for having parts repaired or replaced when continued use of the product would cause damage or excessive wear to the other parts.

It is the user's responsibility to deliver his machine to the Yetter dealer who sold him the product for service or replacement of defective parts, which are covered by the warranty policy.

If you are unable to understand or follow the instructions provided in this publication, consult your local Yetter dealer or contact:

## YETTER MANUFACTURING CO.

309/776-4111

800/447-5777

309/776-3222 (FAX)

Website: [www.yetterco.com](http://www.yetterco.com)

E-mail: [info@yetterco.com](mailto:info@yetterco.com)

## WARRANTY POLICY

Yetter Manufacturing warrants all products manufactured and sold by it against defects in material. This warranty being expressly limited to replacement at the factory of such parts or products as will appear to be defective after inspection. This warranty does not obligate the Company to bear cost of labor in replacement of parts. It is the policy of the company to make improvements without incurring obligations to add them to any unit already sold. No warranty is made or authorized to be made, other than herein set forth. This warranty is in effect for one year after purchase.

Dealer : \_\_\_\_\_

**Yetter Manufacturing warrants its own products only and cannot be responsible for damage to equipment on which mounted.**

## SAFETY PRECAUTIONS

A brief description of signal words that may be used in this manual:

**DANGER:** Indicates an imminently hazardous situation which, if not avoided, “will” result in death or serious injury. This signal word is to be limited to the most extreme situations.

**WARNING:** Indicates a potentially hazardous situation which, if not avoided, “could” result in death or serious injury.

**CAUTION:** Indicates a potentially hazardous situation, which if not avoided, “may” result in minor or moderate injury. It may also be used to alert against unsafe practices.

**NOTICE:** Indicates information considered important, but not hazard related (e.g., messages relating to property damage).

Consult your implement and tractor operator’s manual for correct and safe operating practices. Be aware of towed implement width and allow safe clearance.

Safety decals are placed on the implement to alert the operator and others to the risk of personal injury or unsafe operation during normal operations and servicing.

1. The safety decals must be kept clean and in good condition to ensure that they are legible.
2. Safety decals must be replaced if they are missing or illegible.
3. When components are replaced during repair or servicing, check that the new components include the necessary safety signs.
4. Replacement safety decals may be obtained from your local dealer.



### WARNING

Read these instructions carefully to acquaint yourself with the Equipment. Working with unfamiliar equipment can lead to accidents.

Never park the equipment on a steep incline or leave the equipment running unattended.

Never clean, lubricate or adjust a machine that is in motion.

Always check that straps are secure.

Make sure latches are in pinned position when moving equipment.

Do not allow children to operate this equipment.

Do not allow riders on the equipment, trailer and/or pick-up.

Use speed and caution dictated by the terrain being traversed. Do not operate on any slope steep enough to cause tipping or loss of control.

Read and understand the operator’s manual and require all other persons who will operate the equipment to do the same.

If operating on public roadways, where legal, be certain all lighting is operating properly and observe all traffic laws.

Beware of increased stopping distances and control effort when operating with implements attached.

Be familiar with all controls and be prepared to stop equipment quickly in an emergency.

**FAILURE TO HEED MAY RESULT IN PERSONAL INJURY OR DEATH.**

# TABLE OF CONTENTS

**FOREWORD..... 2**  
**SAFETY.....2-3**  
**BOLT TORQUE..... 4**  
**INSTALLATION..... 5-13**  
**OPERATION..... 14**  
**PARTS IDENTIFICATION.....15-36**

## BOLT TORQUE



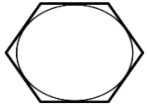



**Important:** Over-tightening hardware can cause just as much damage as under-tightening. Tightening hardware beyond the recommended range can reduce its shock load capacity.

All hardware is Grade 5 unless otherwise noted. Grade 5 cap screws are marked with three radial lines on the head. Grade 8 cap screws are marked with six radial lines on the head. If hardware must be replaced, be sure to replace it with hardware of equal size, strength and thread type. Refer to the torque values chart when tightening hardware.

The chart below is a guide for proper torque. Use it unless a specified torque is called out elsewhere in the manual. Torque is the force applied to the end of the handle or cheater bar, times the length of the handle or bar. Tightening hardware beyond the recommended range can reduce its shock load capacity.

### Use a torque wrench wherever possible

The following table shows torque in ft.-lbs. for coarse thread hardware.

Bolt Diameter and Threads per Inch	 Grade 2	 Grade 5	 A-325	 Grade 8
1/4	6		10	14
5/16	12		20	30
3/8 –16	25		35	50
7/16 – 14	35		55	80
1/2 – 13	55		85	125
9/16 – 12	75		125	175
5/8 – 11	105		170	235
3/4-10	185		305	425
7/8 – 9	170		445	690
1-8	260		670	1030
1 1/8 – 7	365		900	1460
1 1/4 - 7	515		1275	2060
1 3/8 –6	675		1675	2700
1 1/2 - 6	900		2150	3500
1 3/4 – 5	1410		3500	5600

# INSTALLATION INSTRUCTIONS John Deere

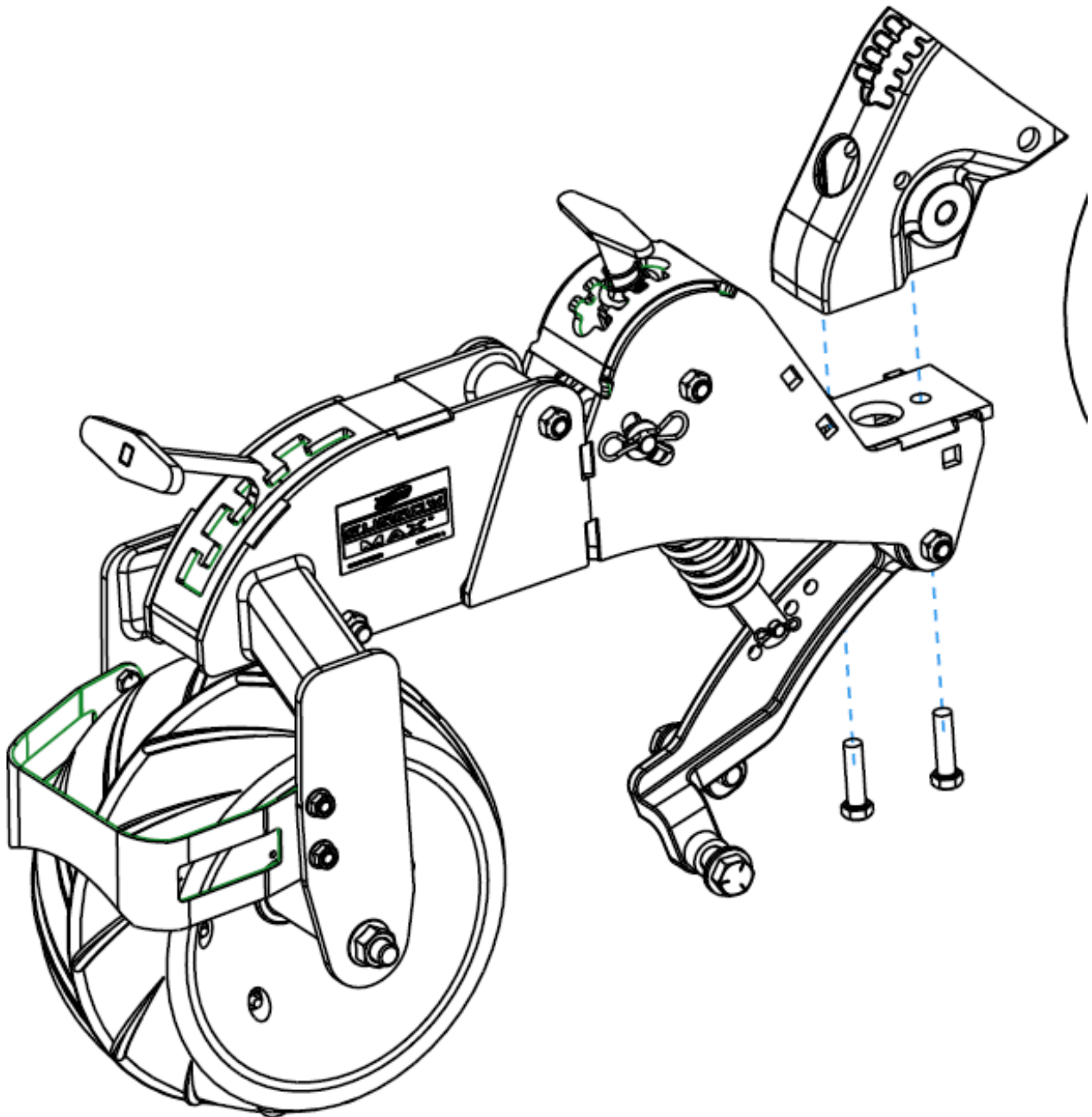
## 7200/7300/1700 6200-070

### STEP 1:

Remove the closing wheel arm, spring and pivot bolts. Then take off the cast block bolted to the row unit. Save the two 12MM bolts holding it on.

### STEP 2:

Using the two 12MM bolts, attach the furrow max unit to the row unit. Ensure that the closing system is straight with the row unit and torque the bolts to 92 ft/lbs.



# INSTALLATION INSTRUCTIONS

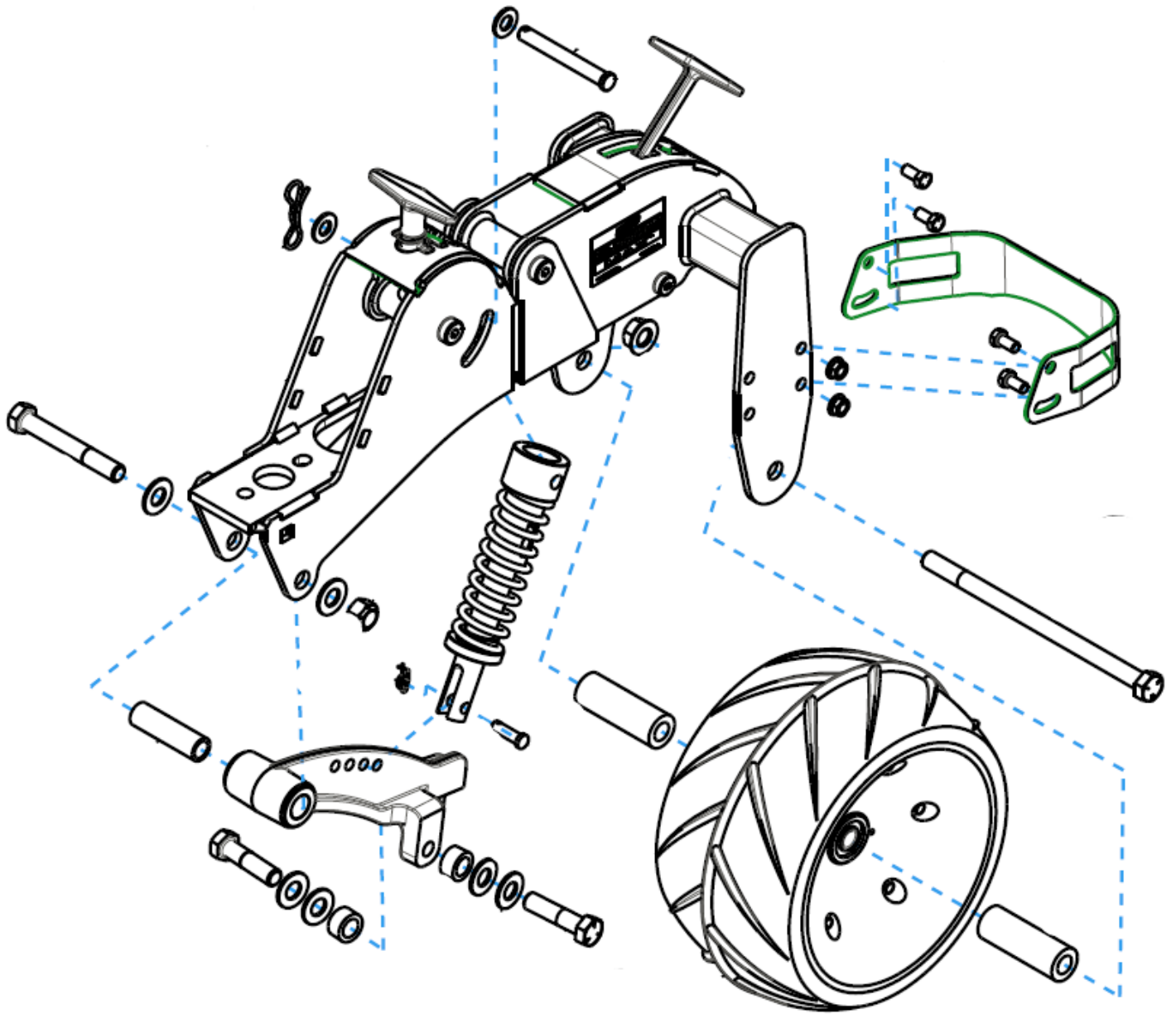
## STEP 3:

Use the 1/2" x 3.75" pin, washers, and cotter pin to attach the spring to the disc pivot bracket. Use the 5/8" x 4-1/2" bolt and locknut to attach the cast closing disc arm to the main body with a washer on each side. Use the 3/8" x 1.25" pin and cotter pin to attach the spring to the cast arm in the 3<sup>rd</sup> hole.

Install the 6 x 12" rubber press wheel onto the rear mount using the 5/8 x 10.5" bolt and serrated flange nut, putting a bushing on each side.

Use the 3/8 x .75" bolts to install the mud scraper. It can be adjusted up or down so it is close to the wheel, but not touching.

Attach the closing disc to the cast arm using the 9/16 spacer between the disc and the arm only. (Additional washers and spacers are for adjusting the disc's wider or narrower)



# INSTALLATION INSTRUCTIONS

## John Deere 7200/7300/1700

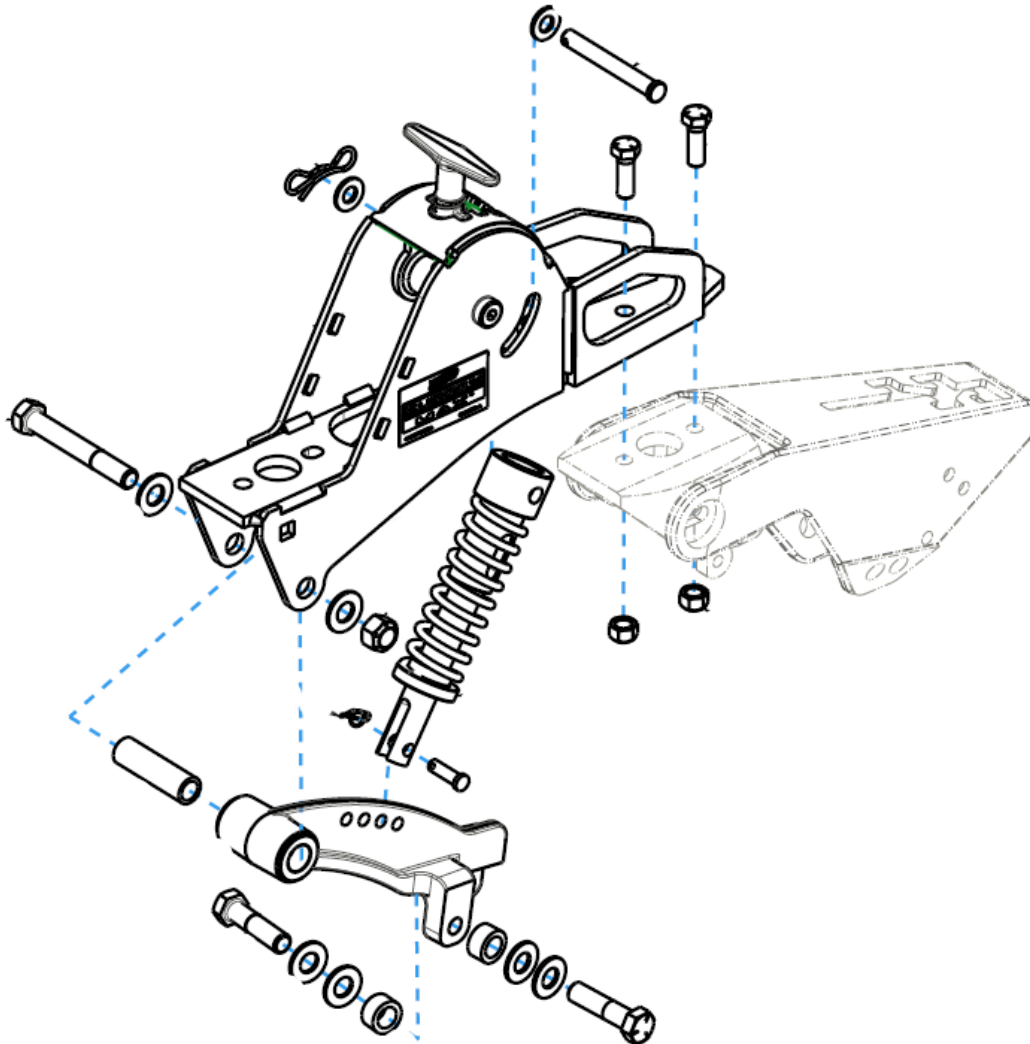
### 6200-080 V-Closing wheel kit

#### STEP 1:

Remove the closing wheel arm, spring and pivot bolts. Then take off the cast block bolted to the row unit. Save the two 12MM bolts holding it on.

#### STEP 2:

Using the two 12MM bolts, attach the furrow max unit to the row unit. Ensure that the closing system is straight with the row unit and torque the bolts to 92 ft/lbs.



#### STEP 3:

Use the 1/2" x 3.75" pin, washers, and cotter pin to attach the spring to the disc pivot bracket. Use the 5/8" x 4-1/2" bolt and locknut to attach the cast closing disc arm to the main body using a washer on each side. Use the 3/8" x 1.25" pin and cotter pin to attach the spring to the cast arm in the 3<sup>rd</sup> hole.

Attach the stock cast closing arm mount block with the two 1/2" x 1.5" bolts and locknuts. Reassemble the closing wheel arm, spring, handle and closing wheels.

# INSTALLATION INSTRUCTIONS

## Kinze 3000 6200-071

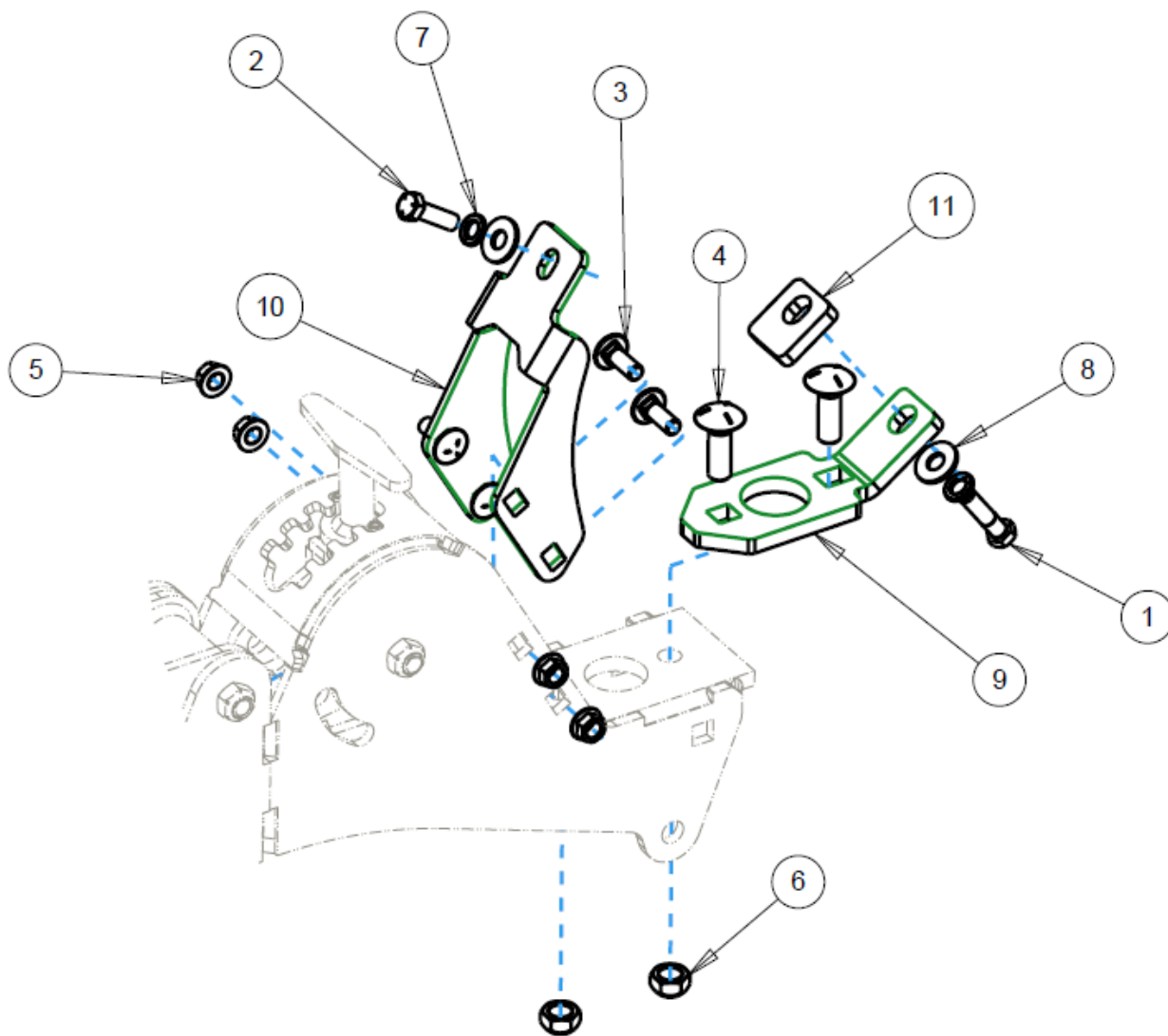
### STEP 1:

Remove the closing wheel arm, spring and pivot bolts. Then take off the cast block bolted to the row unit by removing the 3/8" bolt

### STEP 2:

Attach the Kinze mount adapter (item 9,10) to the main mount bracket as pictured below. **Leave bolts loose at this time.**

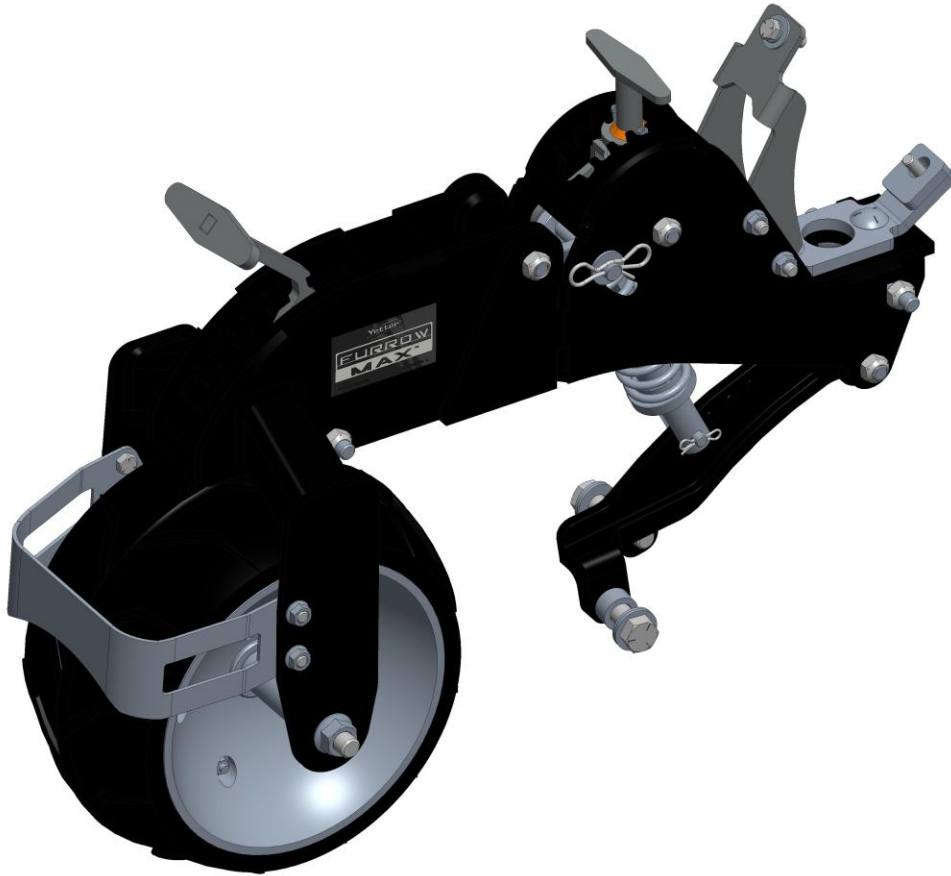
Use the longer 1/2" x 1-1/2" carriage bolts to attach the kinze adapter to the main mount. The shorter 1-1/4" carriage bolts will be used to attach the main mount to the row unit.



# INSTALLATION INSTRUCTIONS

## STEP 3:

Attach the Furrow Max to the row unit. Make sure all the bolts are installed before you begin to tighten them.



## STEP 4:

Use the 1/2" x 3.75" pin, washers, and cotter pin to attach the spring to the disc pivot bracket. Use the 5/8" x 4-1/2" bolt and locknut to attach the cast closing disc arm to the main body. Use the 3/8" x 1.25" pin and cotter pin to attach the spring to the cast arm in the 3<sup>rd</sup> hole.

Install the 6 x 12" rubber press wheel onto the rear mount using the 5/8 x 10.5" bolt and serrated flange nut, putting a bushing on each side.

Use the 3/8 x .75" bolts to install the mud scraper. It can be adjusted up or down so it is close to the wheel, but not touching.

Attach the closing disc to the cast arm using the 9/16 spacer between the disc and the arm only. (Additional washers and spacers are for adjusting the disc's wider or narrower)

# INSTALLATION INSTRUCTIONS

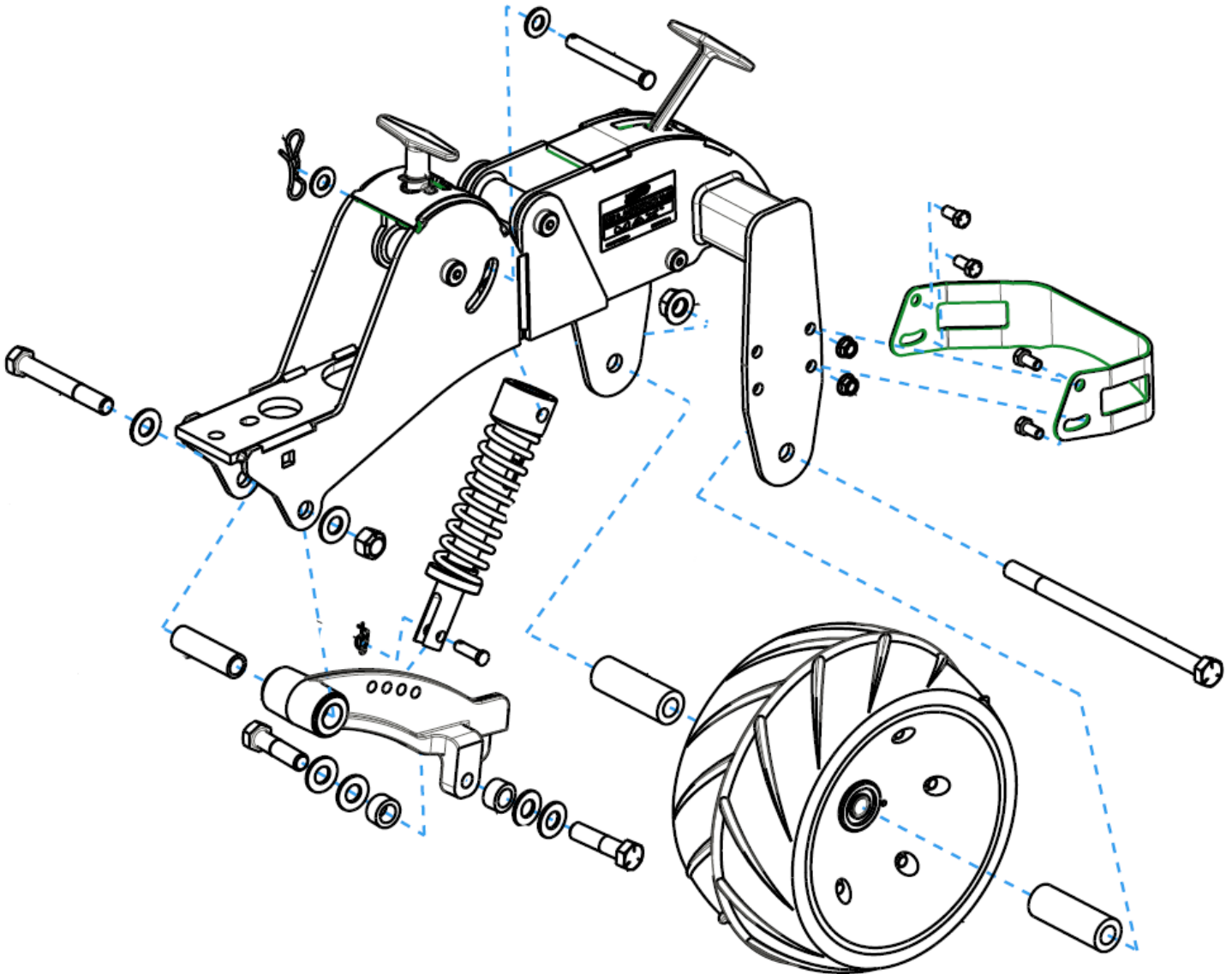
## White 9000 6200-072

### STEP 1:

Remove the closing wheel arm, spring and pivot bolts. Then take off the cast block bolted to the row unit. Save the two 12MM bolts holding it on.

### STEP 2:

Using the two 12MM bolts, attach the furrow max unit to the row unit. Ensure that the closing system is straight with the row unit and torque the bolts to 92 ft/lbs.



# INSTALLATION INSTRUCTIONS

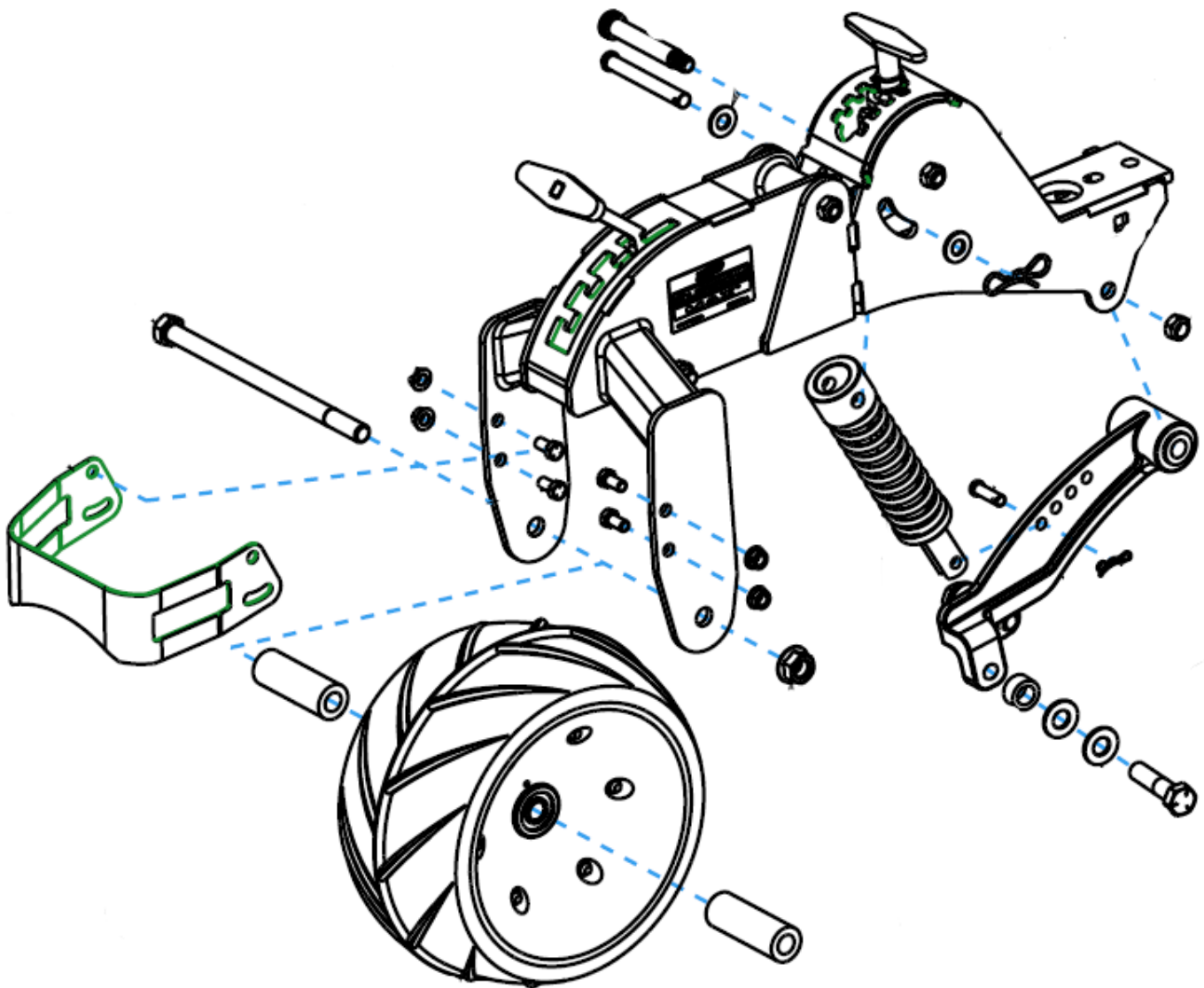
## STEP 3:

Use the  $\frac{1}{2}$ " x 3.75" pin, washers, and cotter pin to attach the spring to the disc pivot bracket. Use the  $\frac{5}{8}$ " x 4-1/2" bolt and locknut to attach the cast closing disc arm to the main body using a washer on each side. Use the  $\frac{3}{8}$ " x 1.25" pin and cotter pin to attach the spring to the cast arm in the 3<sup>rd</sup> hole.

Install the 6 x 12" rubber press wheel onto the rear mount using the  $\frac{5}{8}$  x 10.5" bolt and serrated flange nut, putting a bushing on each side.

Use the  $\frac{3}{8}$  x .75" bolts to install the mud scraper. It can be adjusted up or down so it is close to the wheel, but not touching.

Attach the closing disc to the cast arm using the  $\frac{9}{16}$  spacer between the disc and the arm only. (Additional washers and spacers are for adjusting the disc's wider or narrower)



# INSTALLATION INSTRUCTIONS

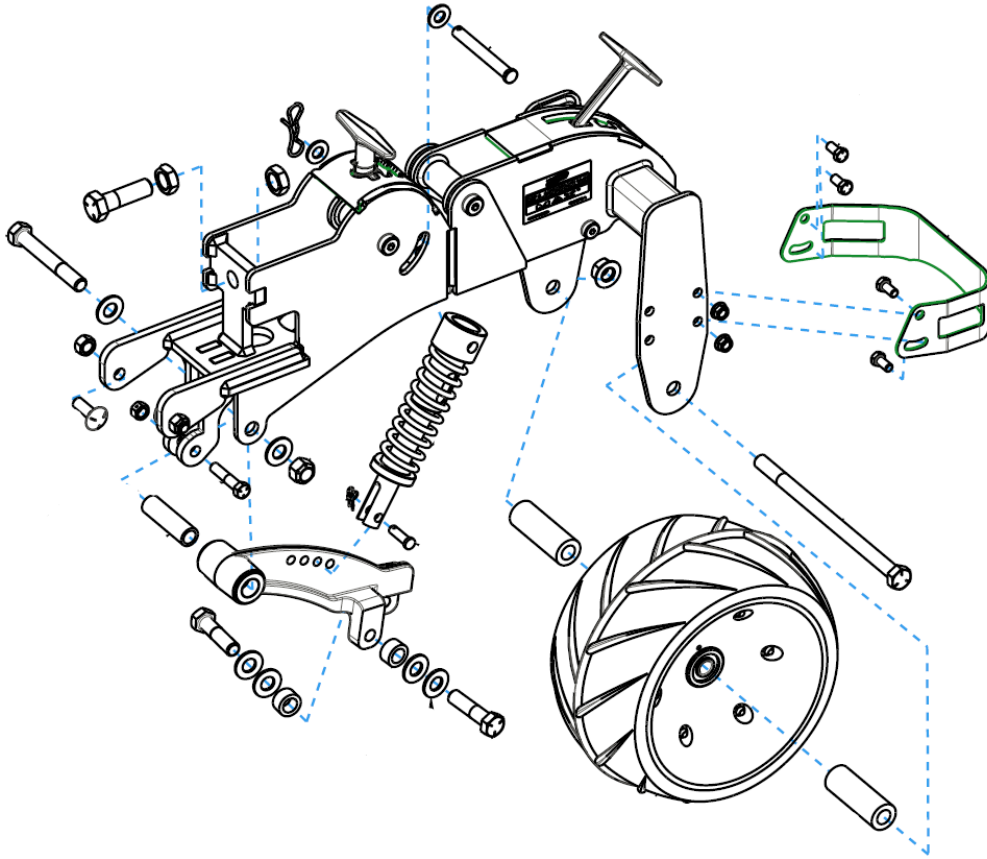
## Kinze 4900 6200-073

### STEP 1:

Remove the closing wheel arm, spring and pivot bolts.

### STEP 2:

Install the Furrow max sub assembly by first putting the  $\frac{1}{2}$ " carriage bolts through the old pivot bolt holes. Next put the  $\frac{7}{16}$ " bolt through the lower hole where the old down pressure spring attached. Tighten the carriage bolts and the  $\frac{7}{16}$ " bolt. Next adjust the  $\frac{3}{4}$ " bolt out to the point that it has a light amount of tension on the back of the row unit, and then tighten the jam nut.



### STEP 3:

Use the  $\frac{1}{2}$ " x 3.75" pin, washers, and cotter pin to attach the spring to the disc pivot bracket. Use the  $\frac{5}{8}$ " x 4-1/2" bolt and locknut to attach the cast closing disc arm to the main body. Use the  $\frac{3}{8}$ " x 1.25" pin and cotter pin to attach the spring to the cast arm in the 3<sup>rd</sup> hole.

Install the 6 x 12" rubber press wheel onto the rear mount using the  $\frac{5}{8}$  x 10.5" bolt and serrated flange nut, putting a bushing on each side.

Use the  $\frac{3}{8}$  x .75" bolts to install the mud scraper. It can be adjusted up or down so it is close to the wheel, but not touching.

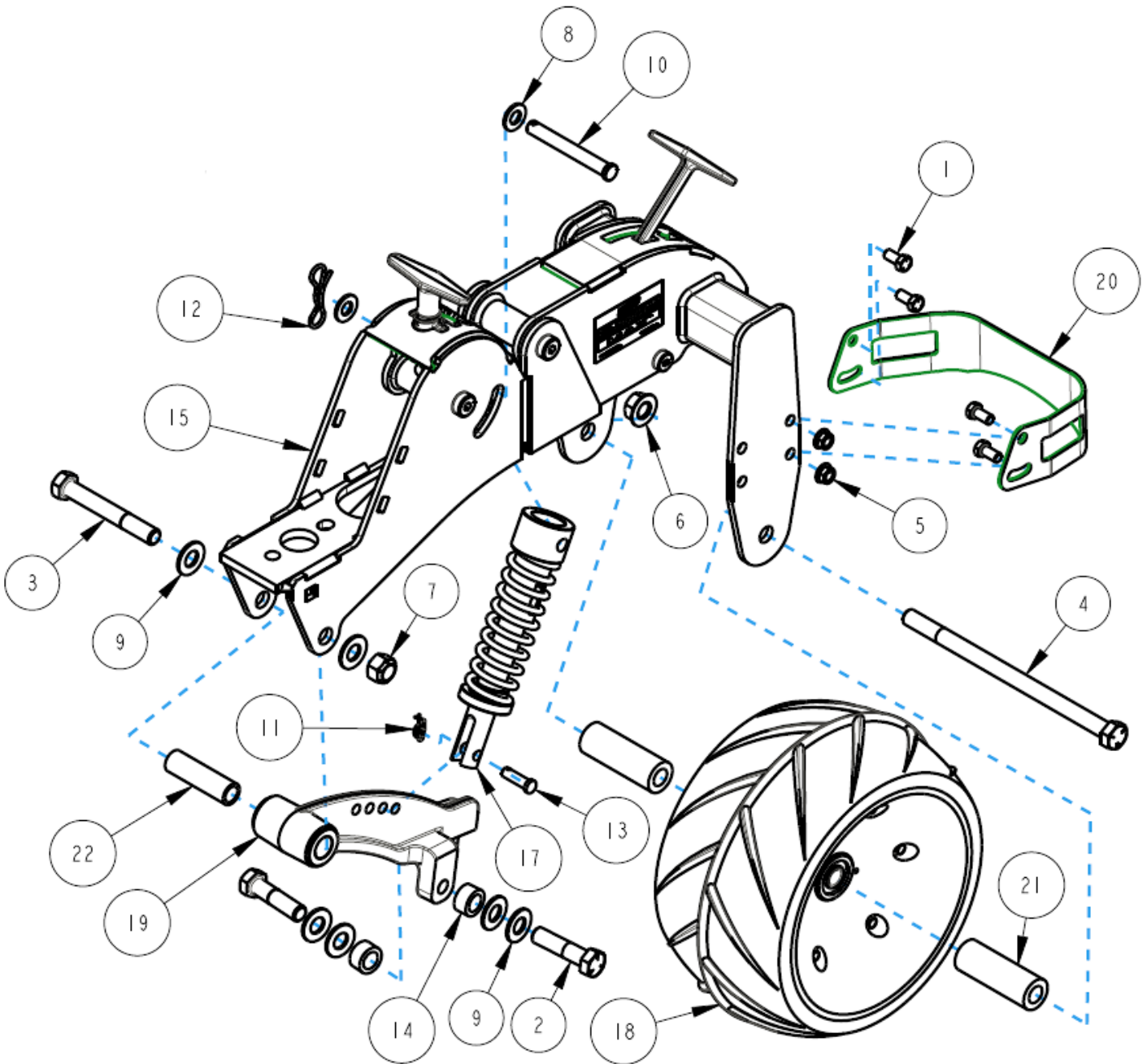
Attach the closing disc to the cast arm using the  $\frac{9}{16}$  spacer between the disc and the arm only. (Additional washers and spacers are for adjusting the disc's wider or narrower)

## OPERATION

The front closing disc need to collapse the sidewall and close the seed trench. They need to be run at or above seed depth. The front adjustment handle is for making small adjustments in down pressure. Big adjustments can be made by changing where the spring attaches to the cast spine. If the seed trench cannot be collapsed, you can narrow up the spacing on the dual closing disc by changing the spacers. The recommended starting setting is (1) 9/16" bushing in between the closing disc and the cast arm. This can be removed and replaced with the 9/32" bushing that is also provided for narrower spacing.

The rear firming wheel is used to take air pockets out of the seed trench. The down pressure can be adjusted to remove the air pockets and set the density of the soil.

**PART IDENTIFICATION**  
**6200-070**  
**John Deere 7200/7300/1700**



# PART IDENTIFICATION

## 6200-070

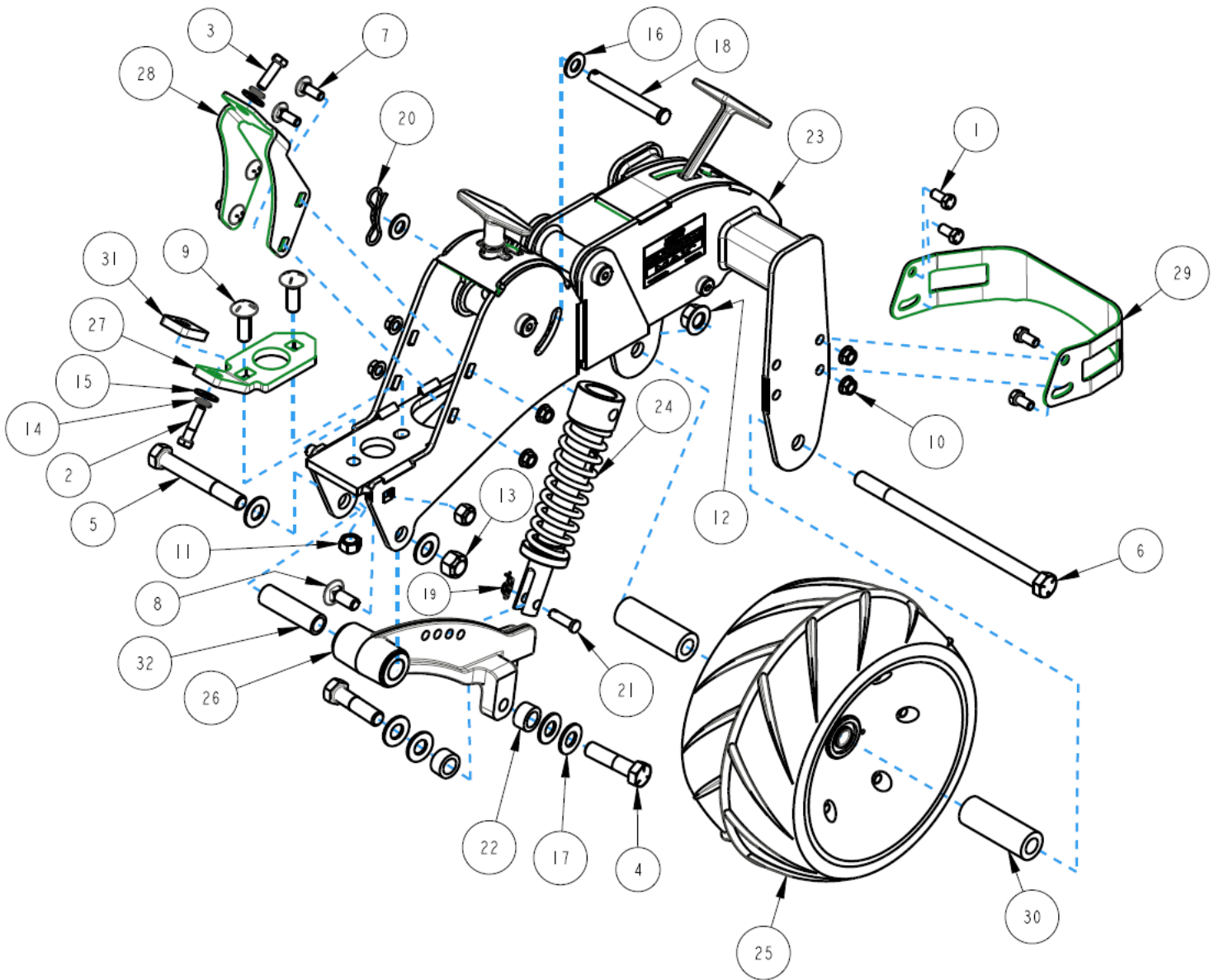
### John Deere 7200/7300/1700

ITEM	PART NO.	DESCRIPTION	QTY
1	2502-230	3/8-16 X 3/4 HHCS GR 5 ZP	4
2	2502-393	5/8-11 X 2 1/2 HHCS GR5 ZP	2
3	2502-433	5/8-11 X 4-1/2 HHCS GR8 ZP	1
4	2502-442	5/8-11 X 10-1/2 HHCS GR5 ZP	1
5	2520-260	3/8-16 SERRATED FLANGE LOCK NUT GR. 5 ZP	4
6	2520-478	5/8-11 SER. FLNG NUT, GR 8, ZP W/THDLOCK	1
7	2520-603	5/8-11 HEX TOP LOCK, GR. C, ZP	1
8	2526-352	1/2 SAE FLATWASHER ZP	2
9	2526-453	5/8 SAE FLATWASHER ZP	6
10	2529-508	CLEVIS PIN, .5 X 3.75 USABLE	1
11	2570-441	5/64 LOCKING COTTER FOR 3/8"PIN, 1-1/4" LONG	1
12	2570-448	.120 BOWTIE LOCKING COTTER ZP	1
13	2959-317	CLEVIS PIN, ZP .375" X 1.25"	1
14	2960-354	PIVOT SPACER; 9/16"; ZP	2
15	6200-1001A	FURROW MAX, SUB-ASSY, BLK, DEERE	1
16	6200-1002A	FURROW MAX, SUB-ASSY, GRN, DEERE	1
17	6200-189	CLOSE DISC SPRING ASSEMBLY	1
18	6200-363	6.5 X 12 PRESS	1
19	6200-496A	CLOSE DISC ARM ASSEMBLY	1
20	6200-510	PRESS WHEEL SCRAPER	1
21	6200-523	PRESS WHEEL SPACER, FURROW MAX	2
22	6200-558	PIVOT SLEEVE	1

# PART IDENTIFICATION

6200-071

Kinze 3000



# PART IDENTIFICATION

## 6200-071

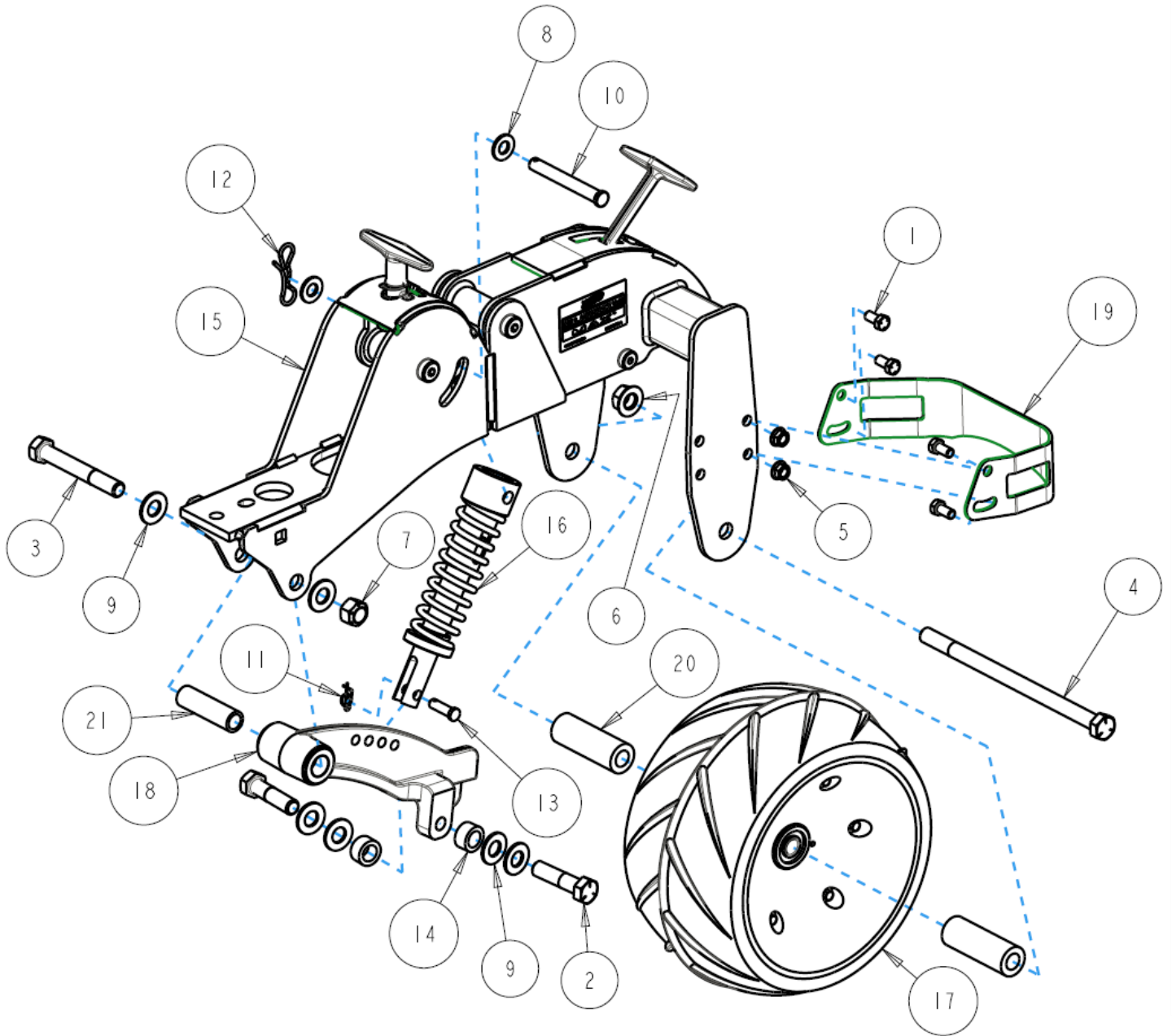
### Kinze 3000

ITEM	PART NO.	DESCRIPTION	QTY
1	2502-230	3/8-16 X 3/4 HHCS GR 5 ZP	4
2	2502-232	3/8-16 X 1 1/2 HHCS GR 5 ZP	1
3	2502-244	3/8-16 X 1-1/4 HHCS GR 5 ZP	1
4	2502-393	5/8-11 X 2 1/2 HHCS GR5 ZP	2
5	2502-433	5/8-11 X 4-1/2 HHCS GR8 ZP	1
6	2502-442	5/8-11 X 10-1/2 HHCS GR5 ZP	1
7	2505-260	ROUND HEAD SHORT SQUARE NECK BOLT ASME B18.5, 3/8-16 X 1, SAE J429, GR5, ZP	4
8	2505-337	1/2-13 X 1 1/4 CARBLT G5ZP	2
9	2505-339	1/2-13 X 1-1/2 CARBLT G5ZP	2
10	2520-260	3/8-16 SERRATED FLANGE LOCK NUT GR. 5 ZP	8
11	2520-362	1/2-13 HEX TOP LOCK NUT, GR C, ZP	4
12	2520-478	5/8-11 SER. FLNG NUT, GR 8, ZP W/THDLOCK	1
13	2520-603	5/8-11 HEX TOP LOCK, GR. C, ZP	1
14	2525-251	3/8 MED. LOCKWASHER ZP.	2
15	2526-251	3/8 STANDARD FLATWASHER ZP	2
16	2526-352	1/2 SAE FLATWASHER ZP	2
17	2526-453	5/8 SAE FLATWASHER ZP	6
18	2529-508	CLEVIS PIN, .5 X 3.75 USABLE	1
19	2570-441	5/64 LOCKING COTTER FOR 3/8"PIN, 1-1/4" LONG	1
20	2570-448	.120 BOWTIE LOCKING COTTER ZP	1
21	2959-317	CLEVIS PIN, ZP .375" X 1.25"	1
22	2960-354	PIVOT SPACER; 9/16"; ZP	2
23	6200-1001A	FURROW MAX, SUB-ASSY, BLK, DEERE	1
24	6200-189	CLOSE DISC SPRING ASSEMBLY	1
25	6200-363	6.5 X 12 PRESS	1
26	6200-496A	CLOSE DISC ARM ASSEMBLY	1
27	6200-498	KINZE MOUNT ADAPTER	1
28	6200-499	KINZE MOUNT BRACKET	1
29	6200-510	PRESS WHEEL SCRAPER	1
30	6200-523	PRESS WHEEL SPACER, FURROW MAX	2
31	6200-542	SPACER BLOCK	1
32	6200-558	PIVOT SLEEVE	1

# PART IDENTIFICATION

6200-072

White 9000



# PART IDENTIFICATION

## 6200-072

### White 9000

ITEM	PART NO.	DESCRIPTION	QTY
1	2502-230	3/8-16 X 3/4 HHCS GR 5 ZP	4
2	2502-393	5/8-11 X 2 1/2 HHCS GR5 ZP	2
3	2502-433	5/8-11 X 4-1/2 HHCS GR8 ZP	1
4	2502-442	5/8-11 X 10-1/2 HHCS GR5 ZP	1
5	2520-258	3/8-16HEX FLANGE LCK NUT ZP	4
6	2520-478	5/8-11 SER. FLNG NUT, GR 8, ZP W/THDLOCK	1
7	2520-603	5/8-11 HEX TOP LOCK, GR. C, ZP	1
8	2526-352	1/2 SAE FLATWASHER ZP	2
9	2526-453	5/8 SAE FLATWASHER ZP	6
10	2529-508	CLEVIS PIN, .5 X 3.75 USABLE	1
11	2570-441	5/64 LOCKING COTTER FOR 3/8"PIN, 1-1/4" LONG	1
12	2570-448	.120 BOWTIE LOCKING COTTER ZP	1
13	2959-317	CLEVIS PIN, ZP .375" X 1.25"	1
14	2960-354	PIVOT SPACER; 9/16"; ZP	2
15	6200-1000A	FURROW MAX, SUB ASSY, WHITE 9000	1
16	6200-189	CLOSE DISC SPRING ASSEMBLY	1
17	6200-363	6.5 X 12 PRESS	1
18	6200-496A	CLOSE DISC ARM ASSEMBLY	1
19	6200-510	PRESS WHEEL SCRAPER	1
20	6200-523	PRESS WHEEL SPACER, FURROW MAX	2
21	6200-558	PIVOT SLEEVE	1



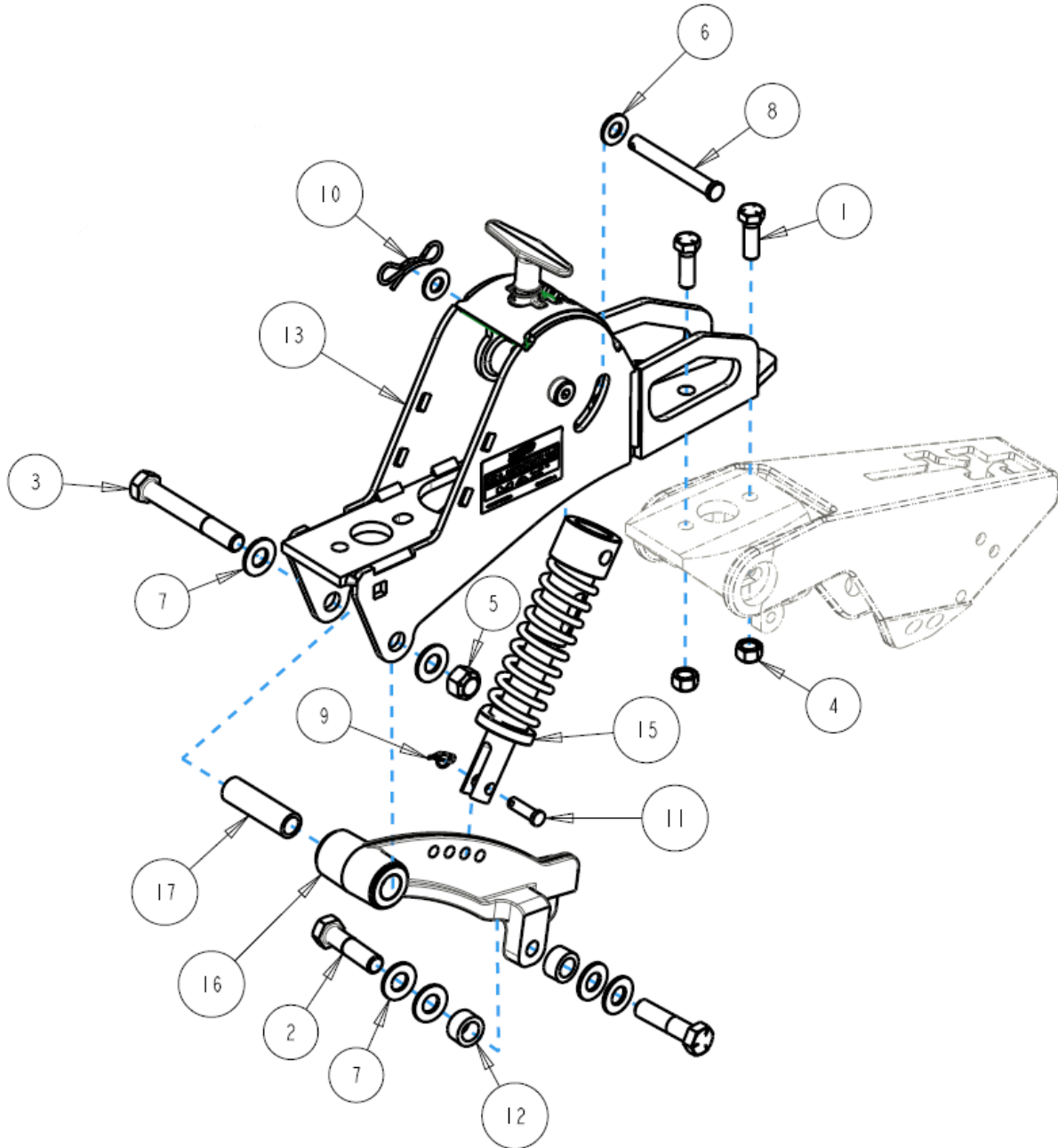
# PART IDENTIFICATION

## 6200-073

### Kinze 4000

ITEM	PART NO.	DESCRIPTION	QTY
1	2502-230	3/8-16 X 3/4 HHCS GR 5 ZP	4
2	2502-267	7/16-14 X 2 HHCS GR 5 ZP	1
3	2502-393	5/8-11 X 2 1/2 HHCS GR5 ZP	2
4	2502-407	3/4-10 X 2-1/2 HHCS GR5 ZP	1
5	2502-433	5/8-11 X 4-1/2 HHCS GR8 ZP	1
6	2502-442	5/8-11 X 10-1/2 HHCS GR5 ZP	1
7	2505-339	1/2-13 X 1-1/2 CARBLT G5ZP	2
8	2520-260	3/8-16 SERRATED FLANGE LOCK NUT GR. 5 ZP	4
9	2520-267	7/16-14 LCK HX NT ZP	1
10	2520-362	1/2-13 HEX TOP LOCK NUT, GR C, ZP	2
11	2520-478	5/8-11 SER. FLNG NUT, GR 8, ZP W/THDLOCK	1
12	2520-502	3/4-10 HEX JAM NUT, GR 2, ZP	2
13	2520-603	5/8-11 HEX TOP LOCK, GR. C, ZP	1
14	2526-352	1/2 SAE FLATWASHER ZP	2
15	2526-453	5/8 SAE FLATWASHER ZP	6
16	2529-508	CLEVIS PIN, .5 X 3.75 USABLE	1
17	2570-441	5/64 LOCKING COTTER FOR 3/8"PIN, 1-1/4" LONG	1
18	2570-448	.120 BOWTIE LOCKING COTTER ZP	1
19	2959-317	CLEVIS PIN, ZP .375" X 1.25"	1
20	2960-354	PIVOT SPACER; 9/16"; ZP	2
21	6200-1003A	FURROW MAX, SUB-ASSY, BLACK, KINZE 4900	1
22	6200-189	CLOSE DISC SPRING ASSEMBLY	1
23	6200-363	6.5 X 12 PRESS	1
24	6200-496A	CLOSE DISC ARM ASSEMBLY	1
25	6200-510	PRESS WHEEL SCRAPER	1
26	6200-523	PRESS WHEEL SPACER, FURROW MAX	2
27	6200-558	PIVOT SLEEVE	1

**PART IDENTIFICATION**  
**John Deere 7200/7300/1700**  
**6200-080 V-Closing wheel kit**



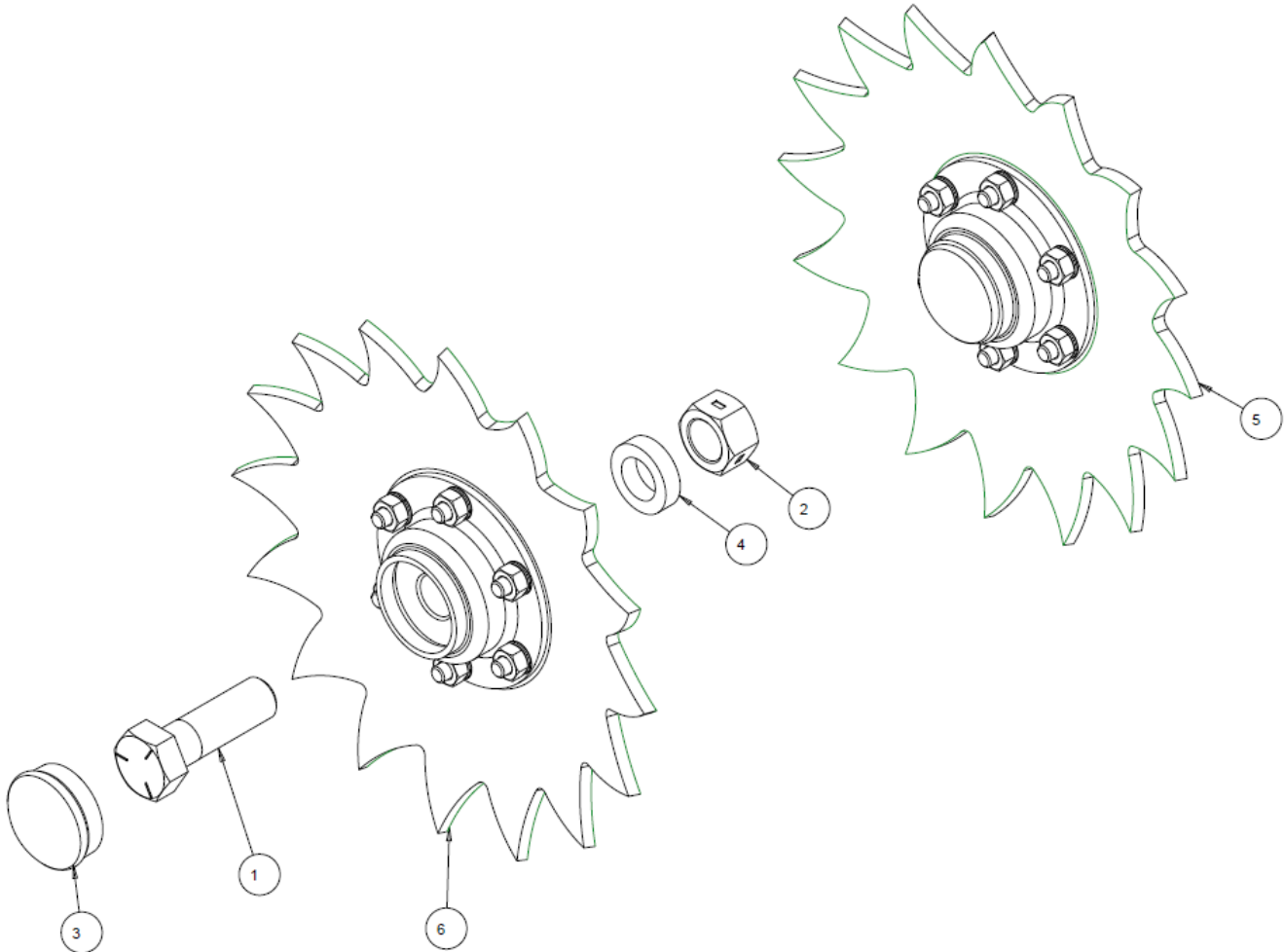
**PART IDENTIFICATION**  
**John Deere7200/7300/1700**  
**6200-080 V-Closing wheel kit**

ITEM	PART NO.	DESCRIPTION	QTY
1	2502-294	1/2-13 X 1-1/2 HHCS GR5 ZP	2
2	2502-393	5/8-11 X 2 1/2 HHCS GR5 ZP	2
3	2502-433	5/8-11 X 4-1/2 HHCS GR8 ZP	1
4	2520-362	1/2-13 HEX TOP LOCK NUT, GR C, ZP	2
5	2520-603	5/8-11 HEX TOP LOCK, GR. C, ZP	1
6	2526-352	1/2 SAE FLATWASHER ZP	2
7	2526-453	5/8 SAE FLATWASHER ZP	6
8	2529-508	CLEVIS PIN, .5 X 3.75 USABLE	1
9	2570-441	5/64 LOCKING COTTER FOR 3/8"PIN, 1-1/4" LONG	1
10	2570-448	.120 BOWTIE LOCKING COTTER ZP	1
11	2959-317	CLEVIS PIN, ZP .375" X 1.25"	1
12	2960-354	PIVOT SPACER; 9/16"; ZP	2
13	6200-1004A	FURROW MAX, L/FIRMING, BLACK, SUB-ASSY	1
14	6200-1005A	FURROW MAX, L/FIRMING, GREEN, SUB-ASSY	1
15	6200-189	CLOSE DISC SPRING ASSEMBLY	1
16	6200-496A	CLOSE DISC ARM ASSEMBLY	1
17	6200-558	PIVOT SLEEVE	1

# PART IDENTIFICATION

## 6000-013A

### 8" Serrated

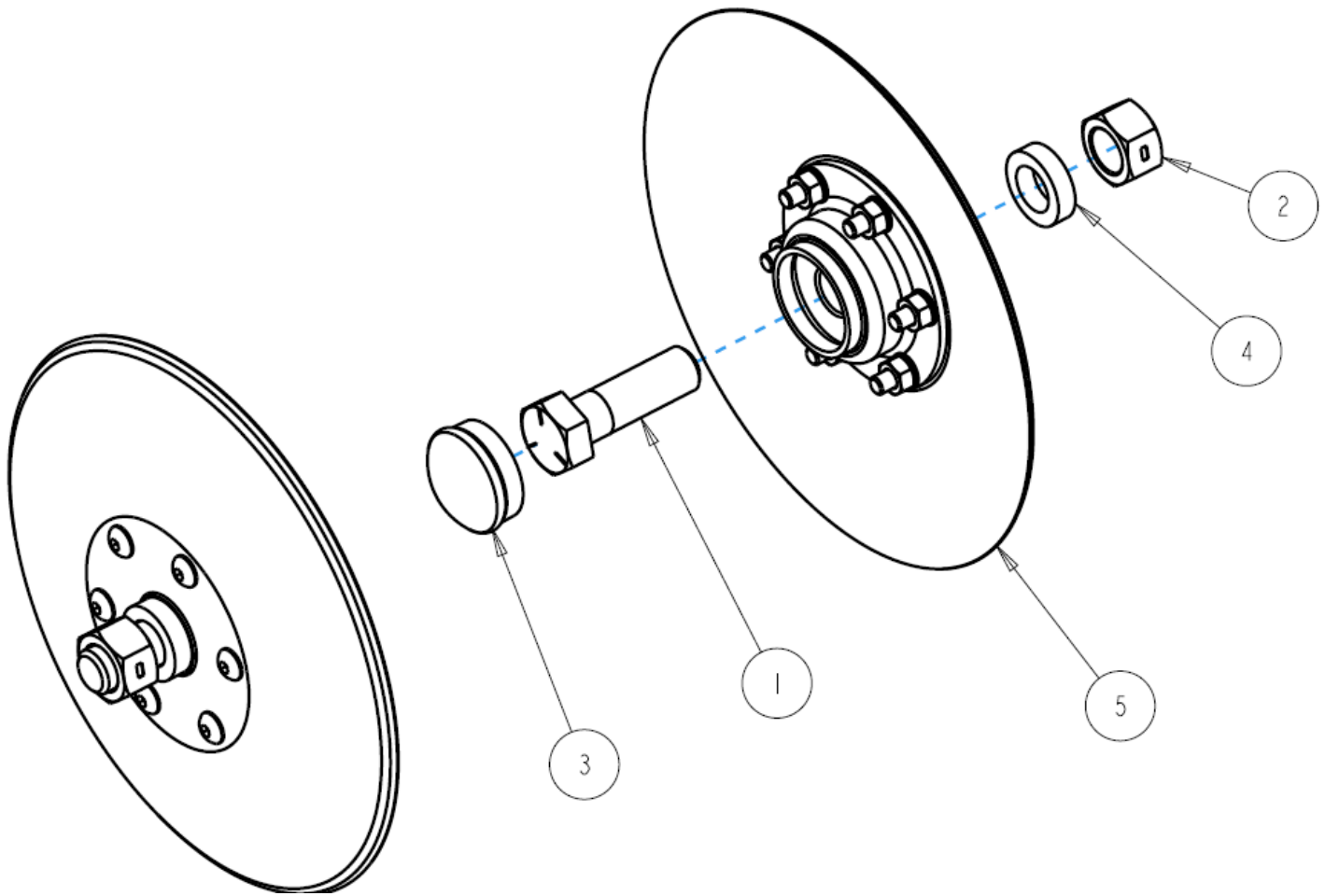


ITEM	PART NO.	DESCRIPTION	QTY
1	2502-391	5/8-11 X 2 HHCS GR 5 ZP	2
2	2520-459	5/8-11 LOCK HEX NUT, GR B, ZP	2
3	2570-789	HUB CAP	2
4	2967-468	9/32" PIVOT ARM BUSHING	2
5	6000-108 8"	SERRATED CLOSE DISC ASSY, LH, CNH 1	1
6	6000-109 8"	SERRATED CLOSE DISC ASSY. RH, CNH 1	1

# PART IDENTIFICATION

## 6000-017

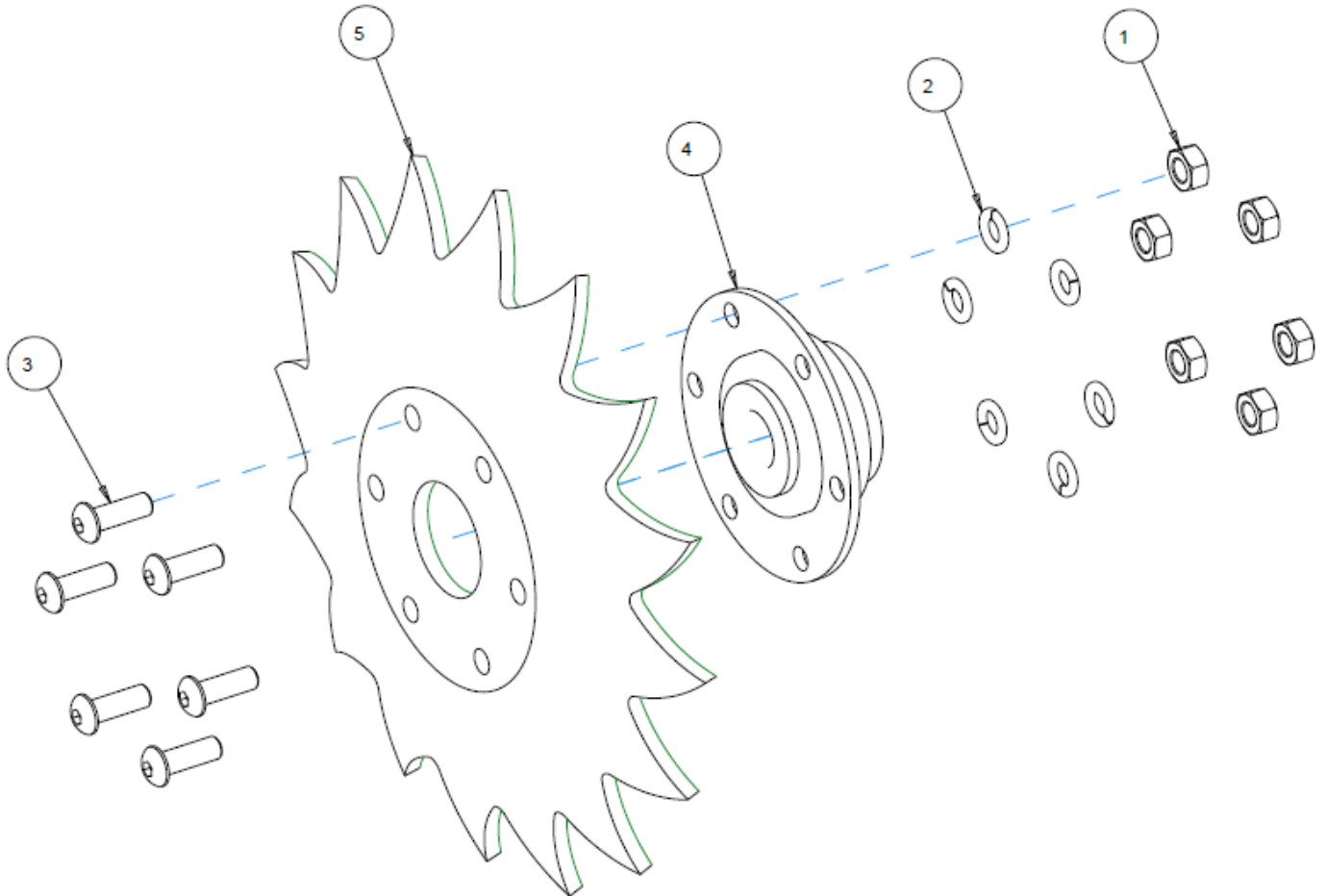
### 8" Smooth



ITEM	PART NO.	DESCRIPTION	QTY
1	2502-391	5/8-11 X 2 HHCS GR 5 ZP	2
2	2520-459	5/8-11 LOCK HEX NUT, GR B, ZP	2
3	2570-789	HUB CAP	2
4	2967-468	9/32" PIVOT ARM BUSHING	2
5	6000-113	8" SMOOTH CLOSE DISC ASSY, CNH	2

# PART IDENTIFICATION

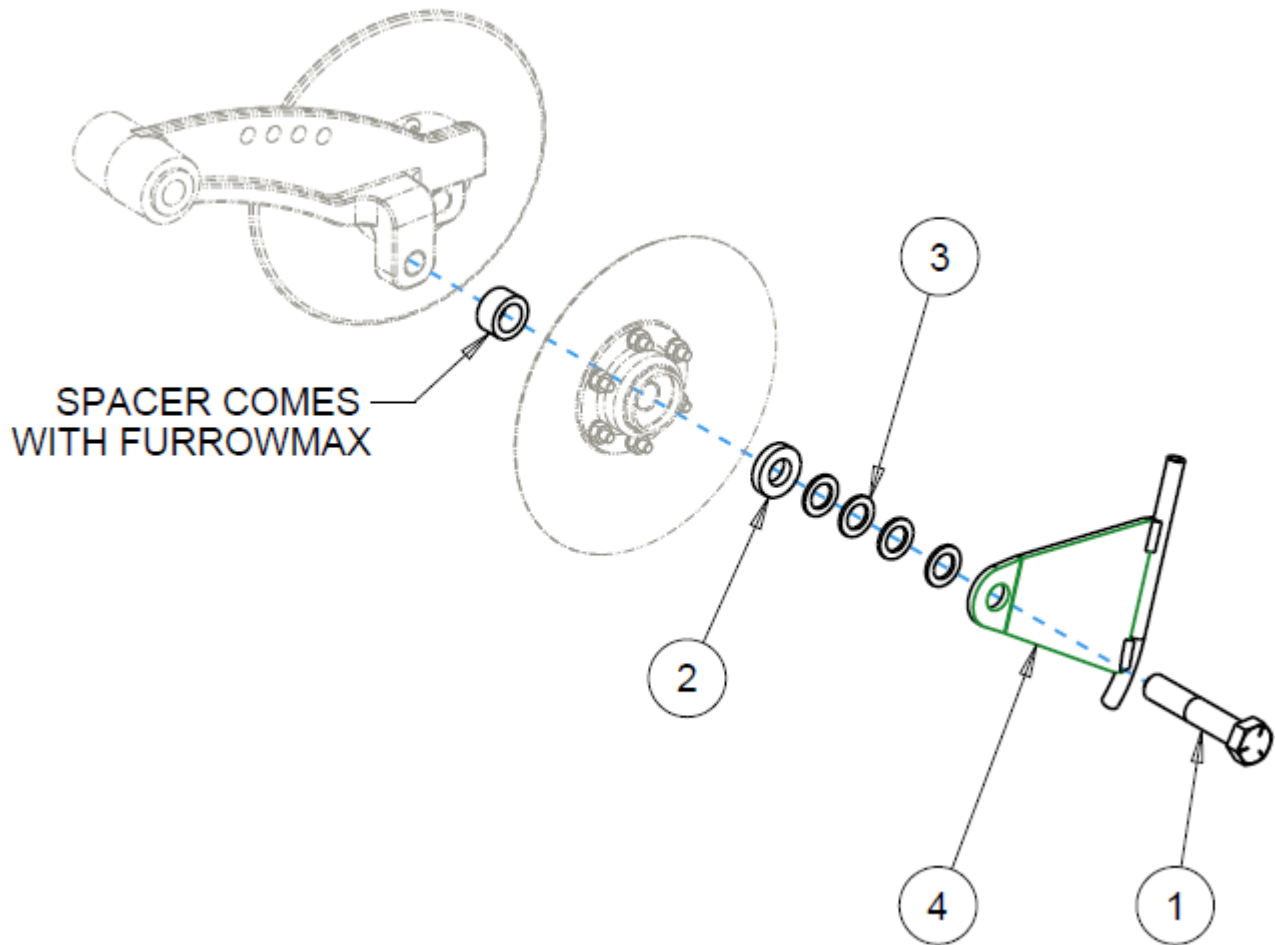
## 6000-108



ITEM	PART NO.	DESCRIPTION	QTY
1	2520-151	1/4-20 HEX NUT ZP	6
2	2525-151	1/4 MED. LOCKWASHER ZP.	6
3	2570-202	1/4 -20 X 3/4 BHSCS ZP	6
4	6000-198	BEARING & HUB ASSEMBLY	1
5	6000-438	8" SERRATED CLOSING DISC, LH	1

# PART IDENTIFICATION

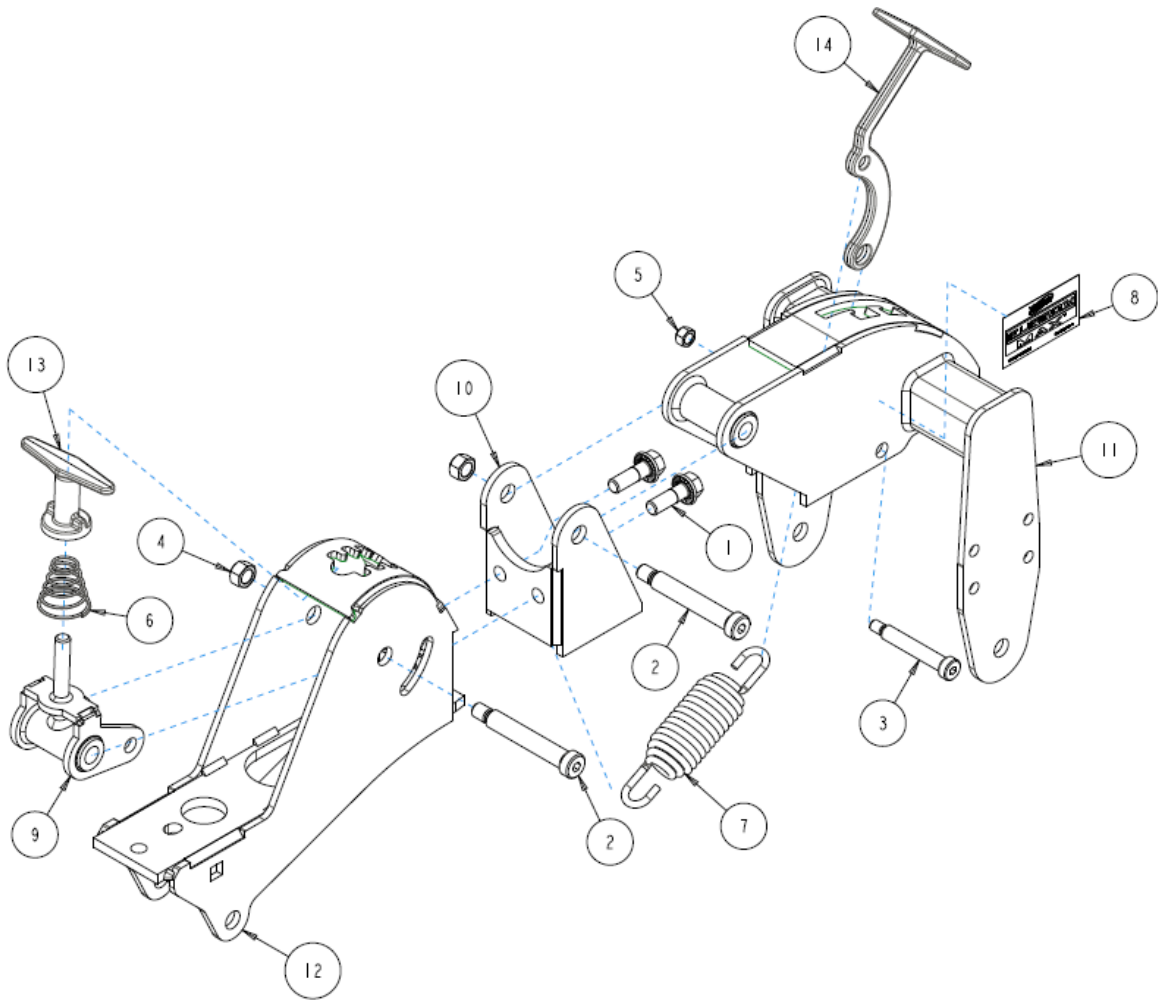
## 6200-085-LH (shown) 6200-085-RH



Item	PART NO.	DESCRIPTION	QTY.
1	2502-385	5/8-11 X 3-1/4 HHCS GR5 ZP	1
2	2526-455	WASH 21/32" X 1 1/4" X 1/4	1
3	2527-563	5/8ID X1"OD X14GA MACH BU	4
4	6200-249	LIQUID TUBE W.A., L.H., STAINLESS	1
4	6200-250	LIQUID TUBE W.A., R.H., STAINLESS	1

# PART IDENTIFICATION

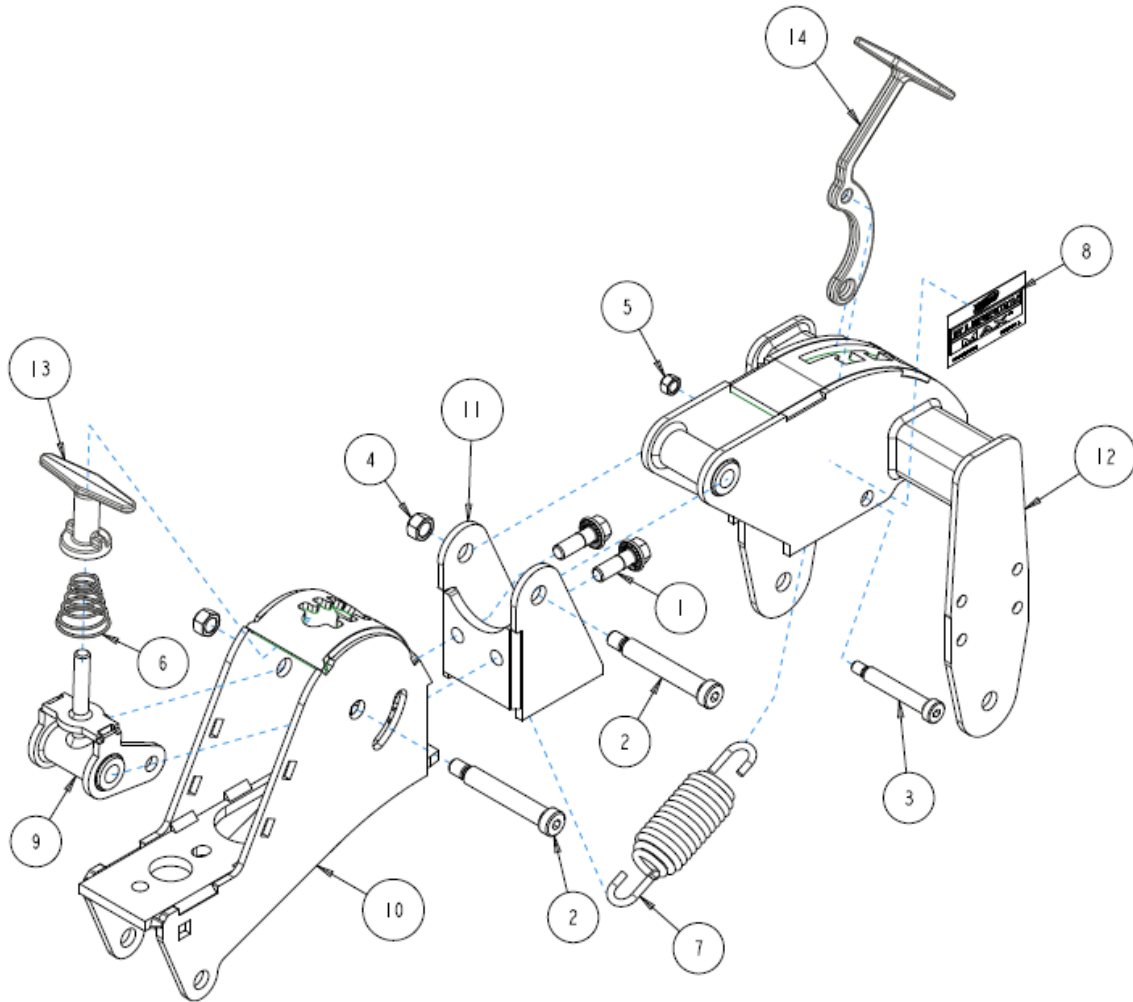
## 6200-1000A



ITEM	PART NO.	DESCRIPTION	QTY
1	2502-307	1/2-13 X 1-1/2 FLANGE SERRATED HEX BOLT PLATED GR 5	2
2	2502-820	HEXAGON SOCKET HEAD SHOULDER SCREW, ASME B18.3, 0.625 X 3.500, ALLOY STEEL, ZINC	2
3	2502-821	HEXAGON SOCKET HEAD SHOULDER SCREW, ASME B18.3, 0.500 X 2.750, ALLOY STEEL, ZINC	1
4	2520-362	1/2-13 HEX TOP LOCK NUT, GR C, ZP	2
5	2520-601	3/8-16 HEX TOP LOCK, GR. C, ZP	1
6	2550-786	CONICAL COMP SPRING, 1.75" X .875" OD, 1.59" X .715"	1
7	2550-787	TAPERED END EXTENSION SPRING	1
8	2565-835	FURROW MAX DECAL, 3-1/2 X 2	2
9	6200-243	PIVOT BRACKET W.A.	1
10	6200-265A	PRESS WHEEL MOUNT W.A.	1
11	6200-266	PRESS WHEEL W.A., NO PAINT	1
12	6200-267	MAIN BODY W.A., WHITE 9000	1
13	6200-442	T-HANDLE, FURROW MAX	1
14	6200-545	SPRING ADJUST HANDLE	1

# PART IDENTIFICATION

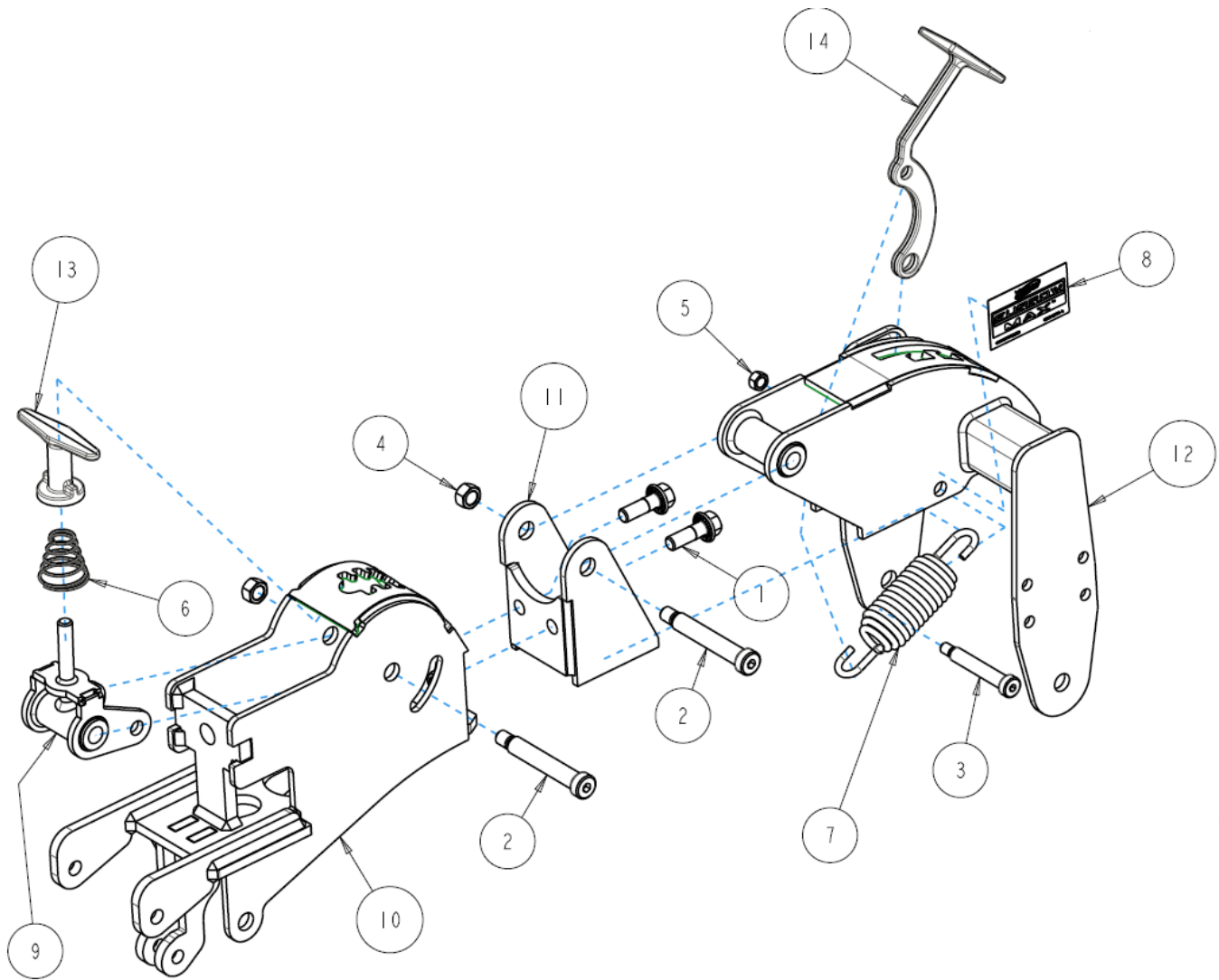
## 6200-1001A



ITEM	PART NO.	DESCRIPTION	QTY
1	2502-307	1/2-13 X 1-1/2 FLANGE SERRATED HEX BOLT PLATED GR 5	2
2	2502-820	HEXAGON SOCKET HEAD SHOULDER SCREW, ASME B18.3, 0.625 X 3.500, ALLOY STEEL, ZINC	2
3	2502-821	HEXAGON SOCKET HEAD SHOULDER SCREW, ASME B18.3, 0.500 X 2.750, ALLOY STEEL, ZINC	1
4	2520-362	1/2-13 HEX TOP LOCK NUT, GR C, ZP	2
5	2520-601	3/8-16 HEX TOP LOCK, GR. C, ZP	1
6	2550-786	CONICAL COMP SPRING, 1.75" X .875" OD, 1.59" X .715"	1
7	2550-787	TAPERED END EXTENSION SPRING	1
8	2565-835	FURROW MAX DECAL, 3-1/2 X 2	2
9	6200-243	PIVOT BRACKET W.A.	1
10	6200-264	MAIN BODY W.A.	1
11	6200-265A	PRESS WHEEL MOUNT W.A.	1
12	6200-266	PRESS WHEEL W.A., NO PAINT	1
13	6200-442	T-HANDLE, FURROW MAX	1
14	6200-545	SPRING ADJUST HANDLE	1

# PART IDENTIFICATION

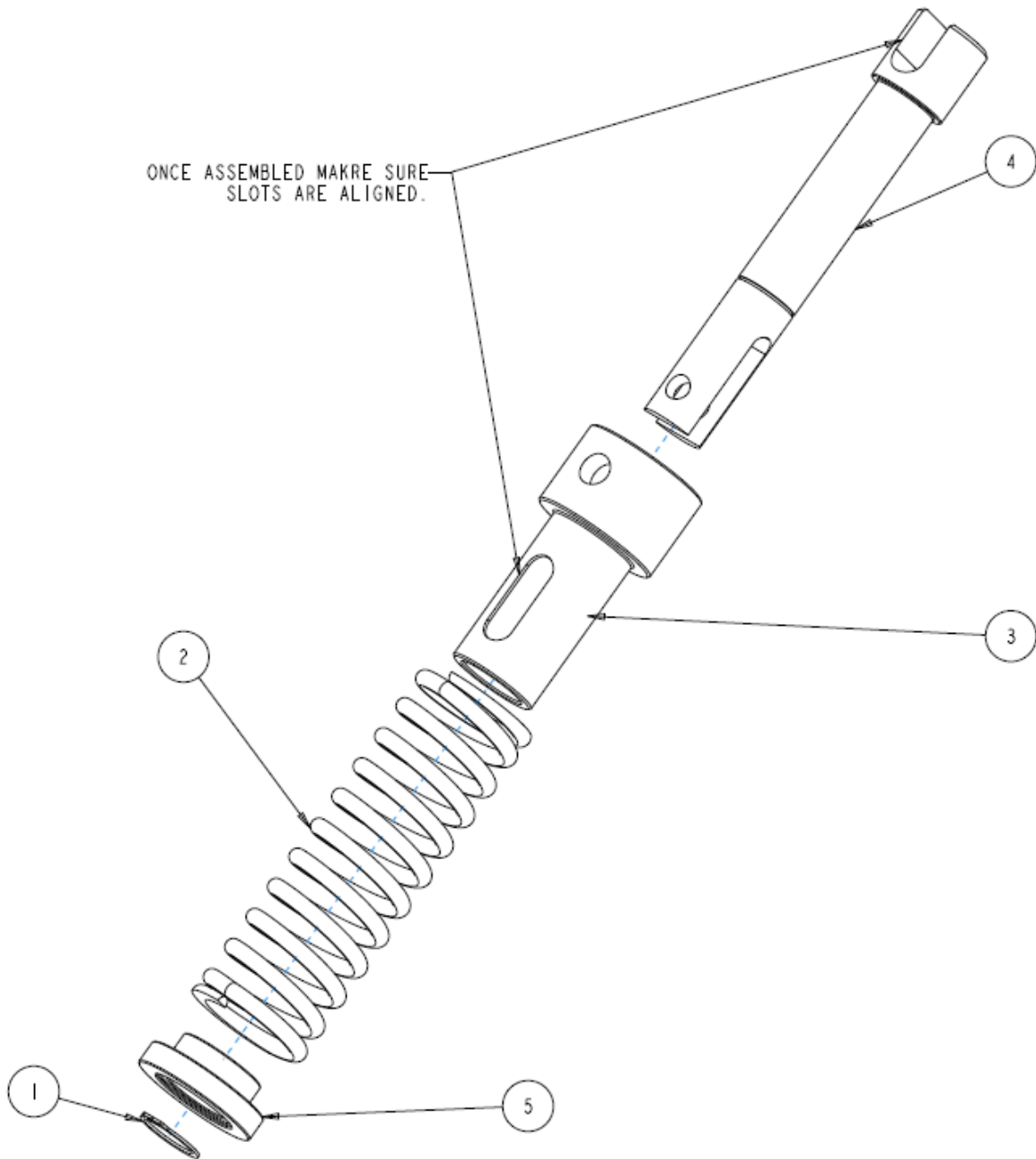
## 6200-1003A



ITEM	PART NO.	DESCRIPTION	QTY
1	2502-307	1/2-13 X 1-1/2 FLANGE SERRATED HEX BOLT PLATED GR 5	2
2	2502-820	HEXAGON SOCKET HEAD SHOULDER SCREW, ASME B18.3, 0.625 X 3.500, ALLOY STEEL, ZINC	2
3	2502-821	HEXAGON SOCKET HEAD SHOULDER SCREW, ASME B18.3, 0.500 X 2.750, ALLOY STEEL, ZINC	1
4	2520-362	1/2-13 HEX TOP LOCK NUT, GR C, ZP	2
5	2520-601	3/8-16 HEX TOP LOCK, GR. C, ZP	1
6	2550-786	CONICAL COMP SPRING, 1.75" X .875" OD, 1.59" X .715"	1
7	2550-787	TAPERED END EXTENSION SPRING	1
8	2565-835	FURROW MAX DECAL, 3-1/2 X 2	2
9	6200-243	PIVOT BRACKET W.A.	1
10	6200-262	MAIN MOUNT W.A., KINZE 4900	1
11	6200-265A	PRESS WHEEL MOUNT W.A.	1
12	6200-266	PRESS WHEEL W.A., NO PAINT	1
13	6200-442	T-HANDLE, FURROW MAX	1
14	6200-545	SPRING ADJUST HANDLE	1

# PART IDENTIFICATION

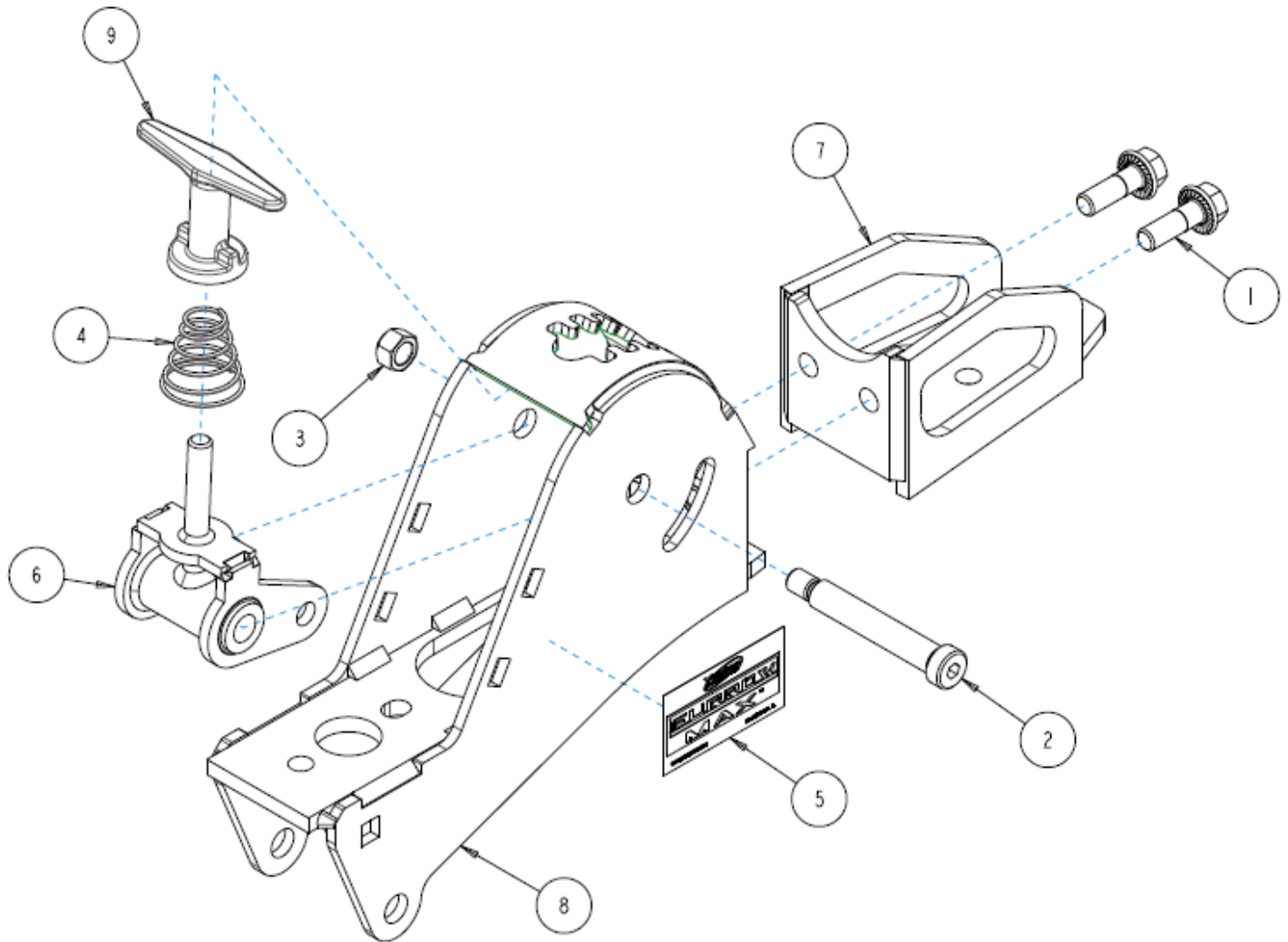
## 6200-189



ITEM	PART NO.	DESCRIPTION	QTY
1	2550-528	SNAP RING, EXTERNAL FOR 15/16" O.D.	1
2	2550-788	SPRING, 6" LONG X 1.938 OD X .25 WIRE	1
3	6200-527	SPRING TOP PIVOT	1
4	6200-528	LOWER SPRING MOUNT PIN	1
5	6200-529	SPRING RETAINING CAP	1

# PART IDENTIFICATION

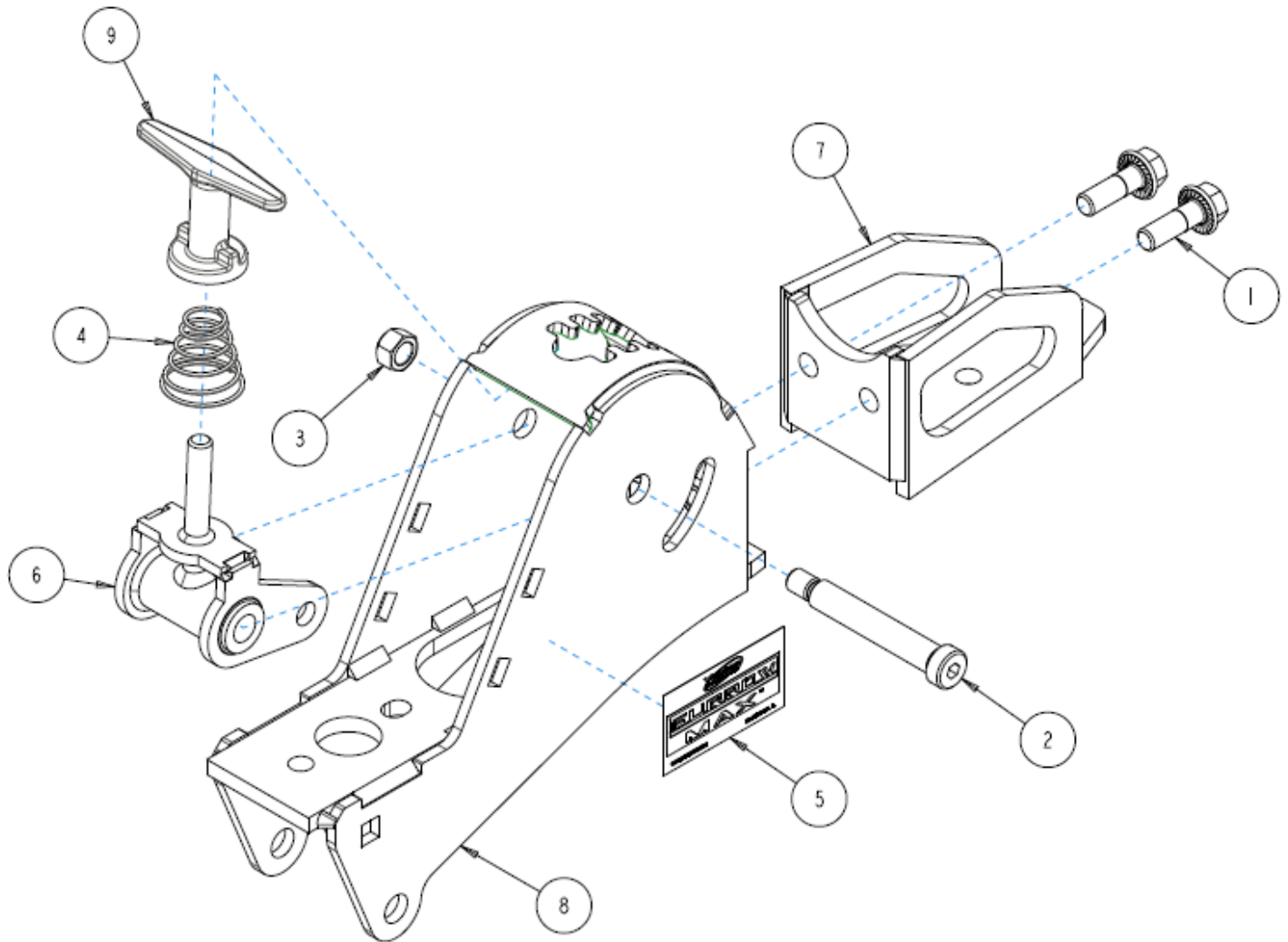
## 6200-1004A (Black)



ITEM	PART NO.	DESCRIPTION	QTY
1	2502-307	1/2-13 X 1-1/2 FLANGE SERRATED HEX BOLT PLATED GR 5	2
2	2502-820	HEXAGON SOCKET HEAD SHOULDER SCREW, ASME B18.3, 0.625 X 3.500, ALLOY STEEL, ZINC	1
3	2520-362	1/2-13 HEX TOP LOCK NUT, GR C, ZP	1
4	2550-786	CONICAL COMP SPRING, 1.75" X .875" OD, 1.59" X .715"	1
5	2565-835	FURROW MAX DECAL, 3-1/2 X 2	2
6	6200-243	PIVOT BRACKET W.A.	1
7	6200-248A	V-CLOSING WHEEL MOUNT W.A.	1
8	6200-264	MAIN BODY W.A.	1
9	6200-442	T-HANDLE, FURROW MAX	1

# PART IDENTIFICATION

## 6200-1005A (Green)



ITEM	PART NO.	DESCRIPTION	QTY
1	2502-307	1/2-13 X 1-1/2 FLANGE SERRATED HEX BOLT PLATED GR 5	2
2	2502-820	HEXAGON SOCKET HEAD SHOULDER SCREW, ASME B18.3, 0.625 X 3.500, ALLOY STEEL, ZINC	1
3	2520-362	1/2-13 HEX TOP LOCK NUT, GR C, ZP	1
4	2550-786	CONICAL COMP SPRING, 1.75" X .875" OD, 1.59" X .715"	1
5	2565-835	FURROW MAX DECAL, 3-1/2 X 2	2
6	6200-243	PIVOT BRACKET W.A.	1
7	6200-248A	V-CLOSING WHEEL MOUNT W.A.	1
8	6200-264	MAIN BODY W.A.	1
9	6200-442	T-HANDLE, FURROW MAX	1

## NOTES:

## NOTES:



A Tradition of Solutions since 1930

Yetter Farm Equipment Co

PO BOX 358 109 S. McDonough

Colchester, IL 62326-0358

Phone: 309-776-4111

Toll Free: 800-447-5777

Email: [info@yetterco.com](mailto:info@yetterco.com)

For updated models and manuals visit the Yetter website:

[www.yetterco.com](http://www.yetterco.com)

© Yetter Farm Equipment Co. All Rights Reserved

2565-989\_REV G – 05/2026