



Tru Closer™  
6000-003/004

OWNER'S MANUAL  
PART IDENTIFICATION  
2565-988\_REV\_B 09/2024



**YETTER MANUFACTURING CO.**

Founded 1930

Colchester, IL 62326

Toll free: (800)447-5777.

Fax: (309)776-3222

Website: yetterco.com

E-mail: info@yetterco.com

**YETTER**

## FOREWORD


You've just joined an exclusive but rapidly growing club.


For our part, we want to welcome you to the group and thank you for buying a Yetter product.


We hope your new Yetter products will help you achieve both goals-increase your productivity and increase your efficiency so that you may generate more profit.


This operator's manual has been designed into four major sections: Foreword, Safety Precautions, Installation Instructions and Parts Breakdown.

This **SAFETY ALERT SYMBOL** indicates important safety messages in the manual...When you see this symbol, be alert to the possibility of **PERSONAL INJURY** and carefully read the message that follows.

 **DANGER:** Indicates an imminently hazardous situation which, if not avoided "will" result in death or serious injury. This signal word is to be limited to the most extreme situations

 **WARNING:** Indicates a potentially hazardous situation which, if not avoided, "could" result in death or serious injury.

 **CAUTION:** Indicates a potentially hazardous situation, which if not avoided, "may" result in minor or moderate injury. It may also be used to alert against unsafe practices.

 **NOTICE:** Indicates information considered important, but not hazard related (e.g., messages relating to property damage).

It is the responsibility of the user to read the operator's manual and comply with the safe and correct operating procedure and to lubricate and maintain the product according to the maintenance schedule in the operator's manual.

The user is responsible for inspecting his machine and for having parts repaired or replaced when continued use of the product would cause damage or excessive wear to the other parts.

It is the user's responsibility to deliver his machine to the Yetter dealer who sold him the product for service or replacement of defective parts, which are covered by the warranty policy.

If you are unable to understand or follow the instructions provided in this publication, consult your local Yetter dealer or contact:

### YETTER MANUFACTURING CO.

309/776-4111

800/447-5777

309/776-3222 (FAX)

Website: [www.yetterco.com](http://www.yetterco.com)

E-mail: [info@yetterco.com](mailto:info@yetterco.com)

### WARRANTY POLICY

Yetter Manufacturing warrants all products manufactured and sold by it against defects in material. This warranty being expressly limited to replacement at the factory of such parts or products as will appear to be defective after inspection. This warranty does not obligate the Company to bear cost of labor in replacement of parts. It is the policy of the company to make improvements without incurring obligations to add them to any unit already sold. No warranty is made or authorized to be made, other than herein set forth. This warranty is in effect for one year after purchase.

Dealer : \_\_\_\_\_

Yetter Manufacturing warrants its own products only and cannot be responsible for damage to equipment on which mounted.



## SAFETY PRECAUTIONS



A brief description of signal words that may be used in this manual:

**DANGER**: Indicates an imminently hazardous situation which, if not avoided, “will” result in death or serious injury. This signal word is to be limited to the most extreme situations.

**WARNING**: Indicates a potentially hazardous situation which, if not avoided, “could” result in death or serious injury.

**CAUTION**: Indicates a potentially hazardous situation, which if not avoided, “may” result in minor or moderate injury. It may also be used to alert against unsafe practices.

**NOTICE**: Indicates information considered important, but not hazard related (e.g., messages relating to property damage).

Consult your implement and tractor operator’s manual for correct and safe operating practices. Be aware of towed implement width and allow safe clearance.

Safety decals are placed on the implement to alert the operator and others to the risk of personal injury or unsafe operation during normal operations and servicing.

1. The safety decals must be kept clean and in good condition to ensure that they are legible.
2. Safety decals must be replaced if they are missing or illegible.
3. When components are replaced during repair or servicing, check that the new components include the necessary safety signs.
4. Replacement safety decals may be obtained from your local dealer.



### WARNING

Read these instructions carefully to acquaint yourself with the Equipment. Working with unfamiliar equipment can lead to accidents.

Never park the equipment on a steep incline or leave the equipment running unattended.

Never clean, lubricate or adjust a machine that is in motion.

Always check that straps are secure.

Make sure latches are in pinned position when moving equipment.

Do not allow children to operate this equipment.

Do not allow riders on the equipment, trailer and/or pick-up.

Use speed and caution dictated by the terrain being traversed. Do not operate on any slope steep enough to cause tipping or loss of control.

Read and understand the operator’s manual and require all other persons who will operate the equipment to do the same.

If operating on public roadways, where legal, be certain all lighting is operating properly and observe all traffic laws.

Beware of increased stopping distances and control effort when operating with implements attached.

Be familiar with all controls and be prepared to stop equipment quickly in an emergency.

**FAILURE TO HEED MAY RESULT IN PERSONAL INJURY OR DEATH.**

# TABLE OF CONTENTS

FOREWORD.....	2
SAFETY.....	2-3
BOLT TORQUE.....	4
INSTALLATION.....	5
OPERATION.....	6
PARTS IDENTIFICATION.....	8-10

## BOLT TORQUE



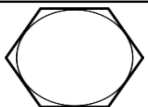



**NOTICE:** Over-tightening hardware can cause just as much damage as under-tightening. Tightening hardware beyond the recommended range can reduce its shock load capacity.

All hardware is either Grade 5 unless otherwise noted. Grade 5 cap screws are marked with three radial lines on the head. Grade 8 cap screws are marked with six radial lines on the head. If hardware must be replaced, be sure to replace it with hardware of equal size, strength and thread type. Refer to the torque values chart when tightening hardware.

The chart below is a guide for proper torque. Use it unless a specified torque is called out elsewhere in the manual. Torque is the force applied to the end of the handle or cheater bar, times the length of the handle or bar. Tightening hardware beyond the recommended range can reduce its shock load capacity.

### Use a torque wrench wherever possible

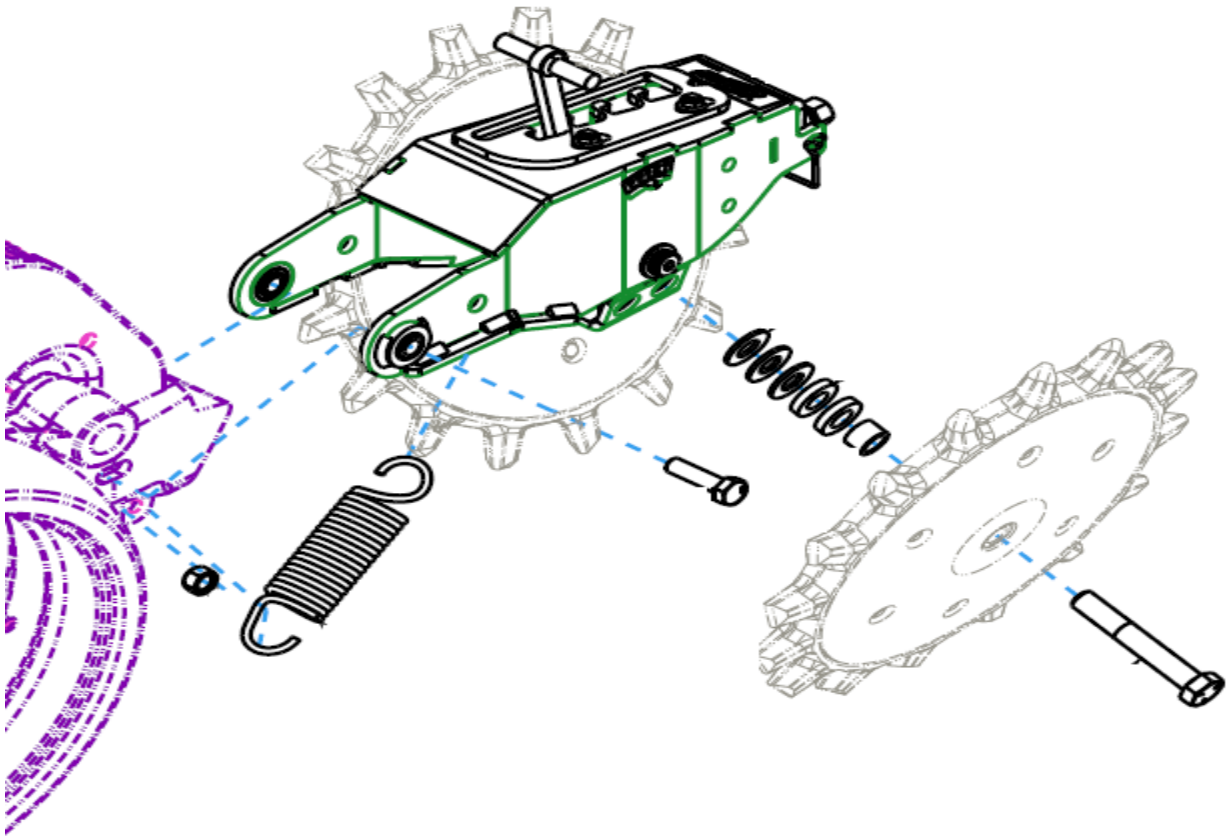
The following table shows torque in ft.-lbs. for coarse thread hardware.

Bolt Diameter and Threads per Inch	 Grade 2	 Grade 5	 A-325	 Grade 8
1/4	6	10		14
5/16	12	20		30
3/8 – 16	25	35		50
7/16 – 14	35	55		80
1/2 – 13	55	85		125
9/16 – 12	75	125		175
5/8 – 11	105	170		235
3/4-10	185	305		425
7/8 – 9	170	445		690
1-8	260	670		1030
1 1/8 – 7	365	900		1460
1 1/4 - 7	515	1275		2060
1 3/8 – 6	675	1675		2700
1 1/2 - 6	900	2150		3500
1 3/4 – 5	1410	3500		5600

# INSTALLATION INSTRUCTIONS

**STEP 1:** Remove closing wheels from the planter closing arm. Then remove the two bolts from the closing arm pivot. Once the closing arm pivot bolts are removed, the closing arm can be spun to release the downforce spring from the row unit.

**STEP 2:** Attach the down pressure spring to the spring adjustment handle on the Tru Closer tailpiece. Then attach the other end of the spring to the spring anchor on the row unit. Using the supplied M12 bolts, attach the Tru Closer to the planter row unit. For John Deere 7200 and newer row units, start by securing the bolts as far rearward as possible. Use the provided 5/8" bolts, washers, and bushings to install the closing wheels to the proper width.



**STEP 3:** For John Deere 7200 and newer row units, use the slots to align the closing wheels on the row. For Deere 7000, and Kinze units use the tolerance between the metric bolt and the hole to align the closing wheels on the row. This should allow about  $\frac{3}{4}$ " of adjustment side to side. If that is not enough to properly center the closing wheels, the closing wheels themselves may need shimmed. To do this, remove washers between the right closing wheel and Tru Closer arm and reinstall on the left side, or vise versa to achieve proper alignment.

# OPERATION

## **Angle Pitch Adjustment**

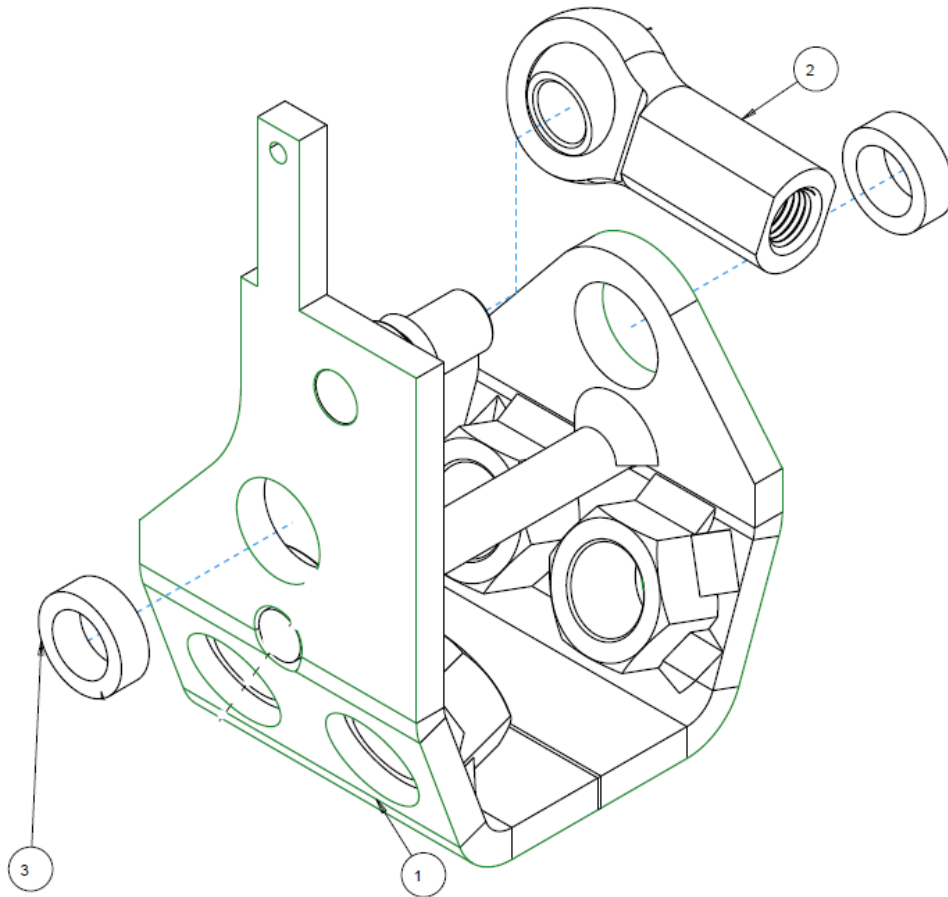
It should be noted that the toe out on a stock tailpiece of 4 degrees. This is universal across manufacturers. When getting adjusted this should be the setting to “compare to stock”. Pitching the closing wheels toed out at about 6-8 degrees greatly helps close the seed trench and take air pockets out at seed depth. In general the more challenging the field conditions, the more aggressive you want to toe out the closing wheels.

## **Down Pressure Adjustment**

Down pressure can be calibrated on a row to row basis, as brand new stock tail pieces can fluctuate as much as 10% row to row. The two 5/16” flange nuts can be loosened on the spring adjustment plate, and the spring adjustment plate can be moved forward or backwards. Moving forward reduces down pressure and backward increases. A rule of thumb is to start on notch 1 or 2. If there is any air pockets at seed depth or any indication of a sidewall, increase down pressure. If you have to increase the down pressure so much that you start “packing” the seed trench, increase the toe out adjustment and decrease the down pressure.

# PART IDENTIFICATION

6000-130

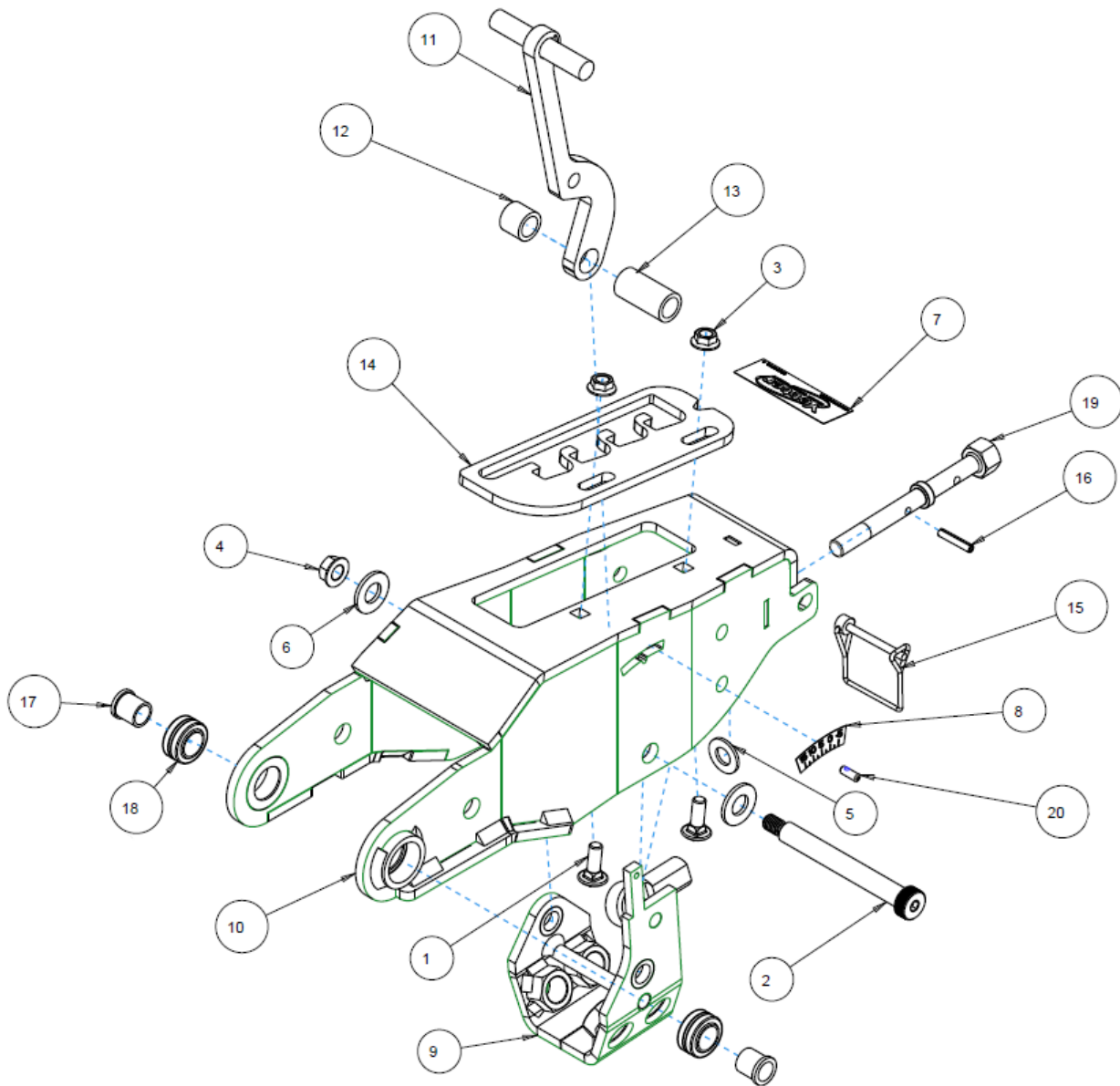


ITEM	PART NO.	DESCRIPTION	QTY
1	6000-262	WHEEL CARRIER W.A.	1
2	6000-450	7/16" BALL JOINT ROD END	1
3	6000-463	WHEEL CARRIER FIBER BEARING	2



# PART IDENTIFICATION

6000-121





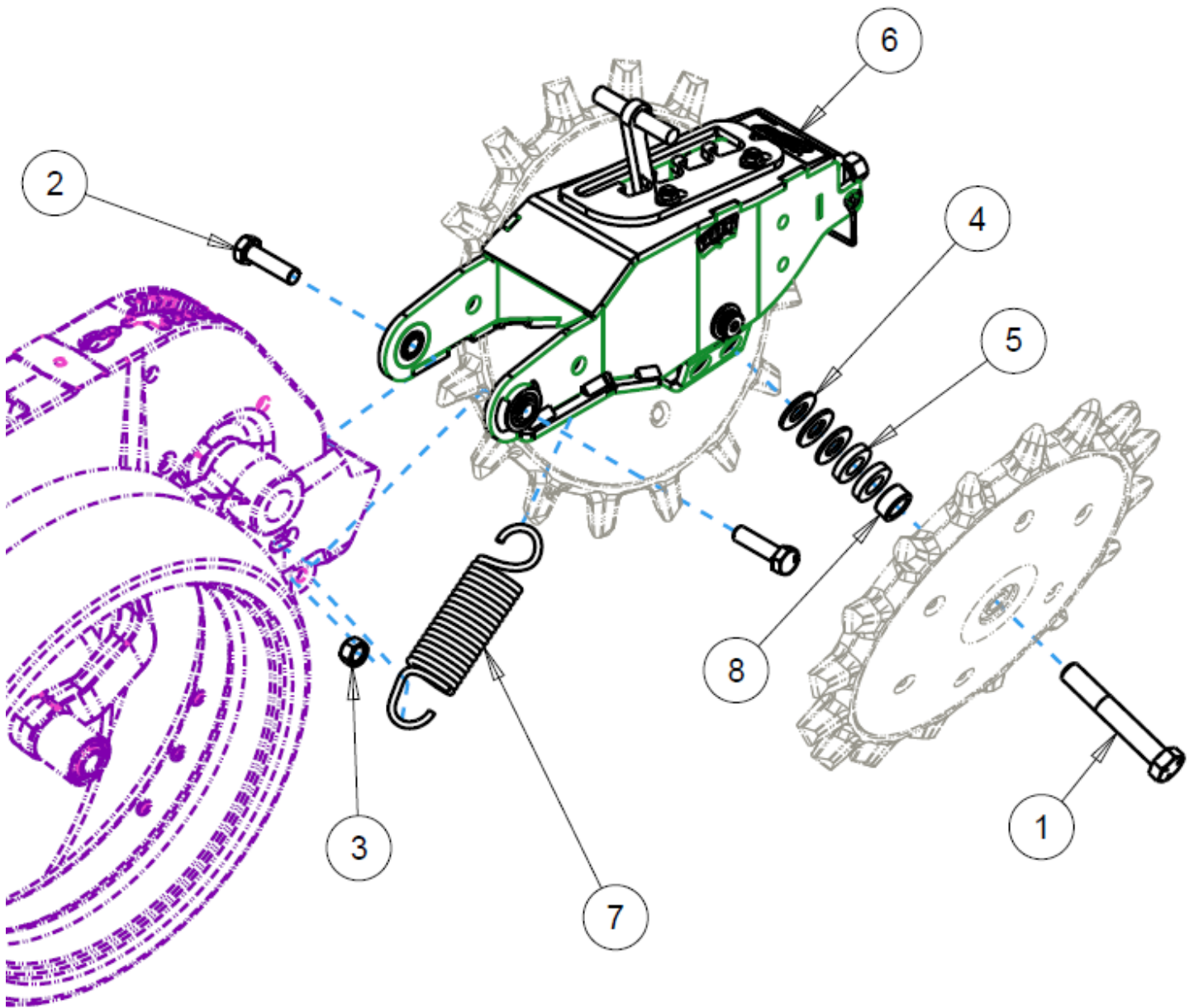
# PART IDENTIFICATION

## 6000-121

ITEM	PART NO.	DESCRIPTION	QTY
1	2502-192	5/16-18 X 7/8 CARBLT GR5 ZP	2
2	2510-312	1/2" DIA. X 4" L SHOULDER SCREW	1
3	2520-206	5/16-18 FLANGE LOCK NUT	2
4	2520-252	3/8-16 HEX FLANGE TOP LOCK NUT, GR G, ZP	1
5	2526-252	7/16 SAE FLATWASHER ZP	1
6	2526-352	1/2 SAE FLATWASHER ZP	2
7	2565-179	YETTER DECAL 1" X 3"	1
8	2565-509	PITCH ANGLE DECAL	1
9	6000-130	WHEEL CARRIER	1
10	6000-255	TAILPIECE BODY W.A	1
11	6000-256	SPRING ADJUSTMENT HANDLE	1
12	6000-447	SPACER BUSHING	1
13	6000-448	SPACER BUSHING	1
14	6000-452	SPRING ADJUSTMENT PLATE	1
15	6000-460	3/16" DIAMETER WIRE LOCK PIN	1
16	6000-462	3/16" HEAVY DUTY COILED SPRING PIN	1
17	6000-465	PIVOT BUSHING	2
18	6000-466	.625" ID PLAIN SPHERICAL BEARING, SEALED	2
19	6000-467	ADJUSTMENT LINKAGE	1
20	6000-470	INDICATOR STUD	1

# PART IDENTIFICATION

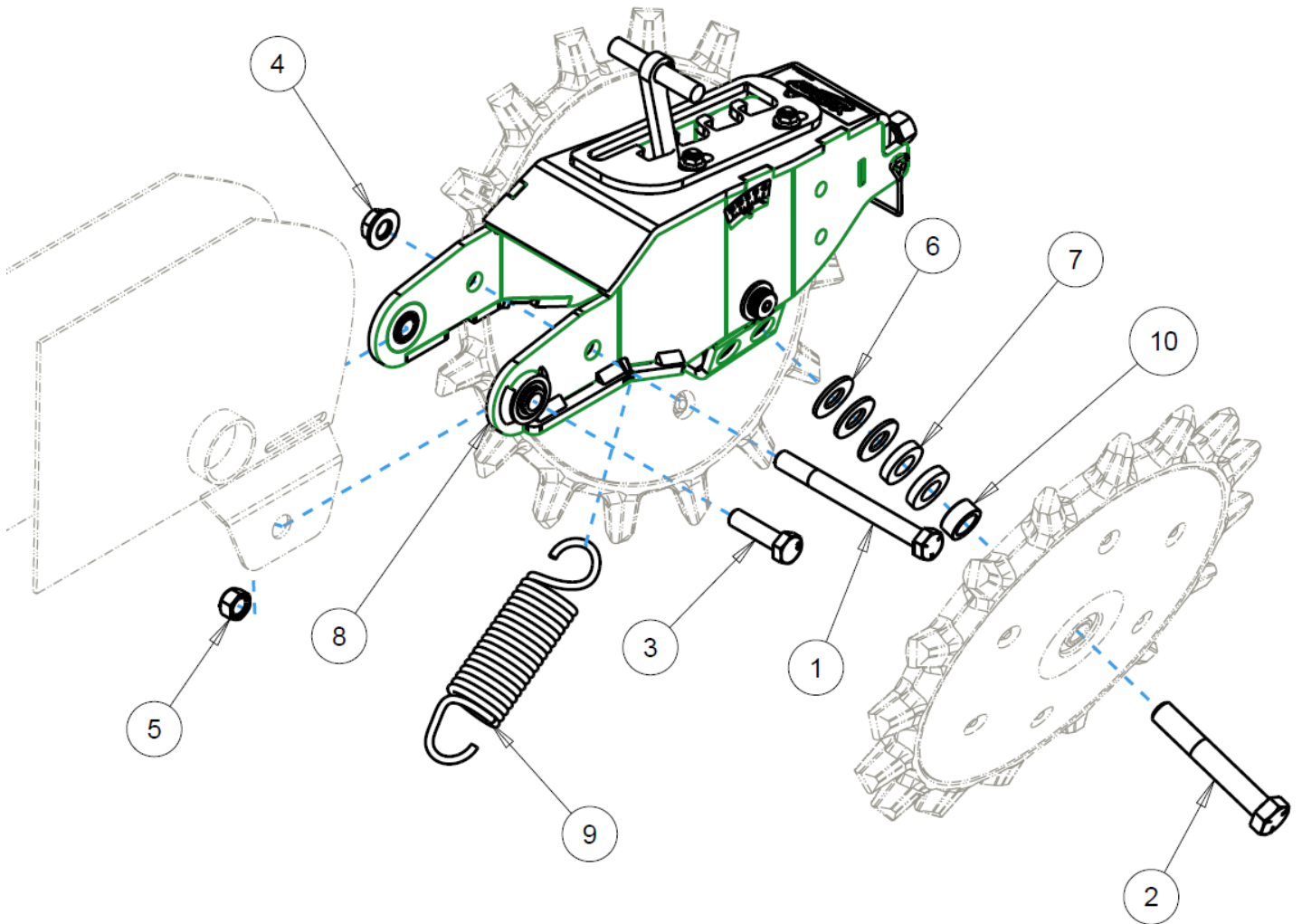
## 6000-003 Deere



ITEM	PART NO.	DESCRIPTION	QTY
1	2502-336	5/8-11 X 4 HHCS GR. 5 ZP	2
2	2502-818	M12-1.75 X 45 GR 8.8 HHCS ZP	2
3	2520-700	HEX LOCKNUT DEFLECTED THREAD-M12	2
4	2526-453	5/8 SAE FLATWASHER ZP	6
5	2526-455	WASH 21/32" X 1 1/4" X 1/4	4
6	6000-121	TRU CLOSER SUB ASSEMBLY	1
7	6000-455	DOWNFORCE SPRING	1
8	6200-483	1" O.D. X 0.688" I.D. X .433" L BUSHING	2

# PART IDENTIFICATION

## 6000-004



ITEM	PART NO.	DESCRIPTION	QTY
1	2502-298	1/2-13 x 5.25 HHCS GR 5 ZP	1
2	2502-336	5/8-11 X 4 HHCS GR. 5 ZP	2
3	2502-818	M12-1.75 X 45 GR 8.8 HHCS ZP	2
4	2520-368	1/2-13 HEX FLANGE NUT, PREVAIL_TORQUE, GR C, ZP	1
5	2520-700	HEX LOCKNUT DEFLECTED THREAD-M12	2
6	2526-453	5/8 SAE FLATWASHER ZP	6
7	2526-455	WASH 21/32" X 1 1/4" X 1/4	4
8	6000-121	TRU CLOSER SUB ASSEMBLY	1
9	6000-455	DOWNFORCE SPRING	1
10	6200-483	1" O.D. X 0.688" I.D. X .433" L BUSHING	2



A Tradition of Solutions since 1930

Yetter Farm Equipment Co

PO BOX 358 109 S. McDonough

Colchester, IL 62326-0358

Phone: 309-776-4111

Toll Free: 800-447-5777

Email: [info@yetterco.com](mailto:info@yetterco.com)

For updated models and manuals visit the Yetter website:

[www.yetterco.com](http://www.yetterco.com)

© Yetter Farm Equipment Co. All Rights Reserved

2565-988\_REV\_B – 09/2024