



**6000-013 / 6000-014 / 6000-021**

SERRATED CLOSING DISC

**6000-017**

SMOOTH CLOSING DISC

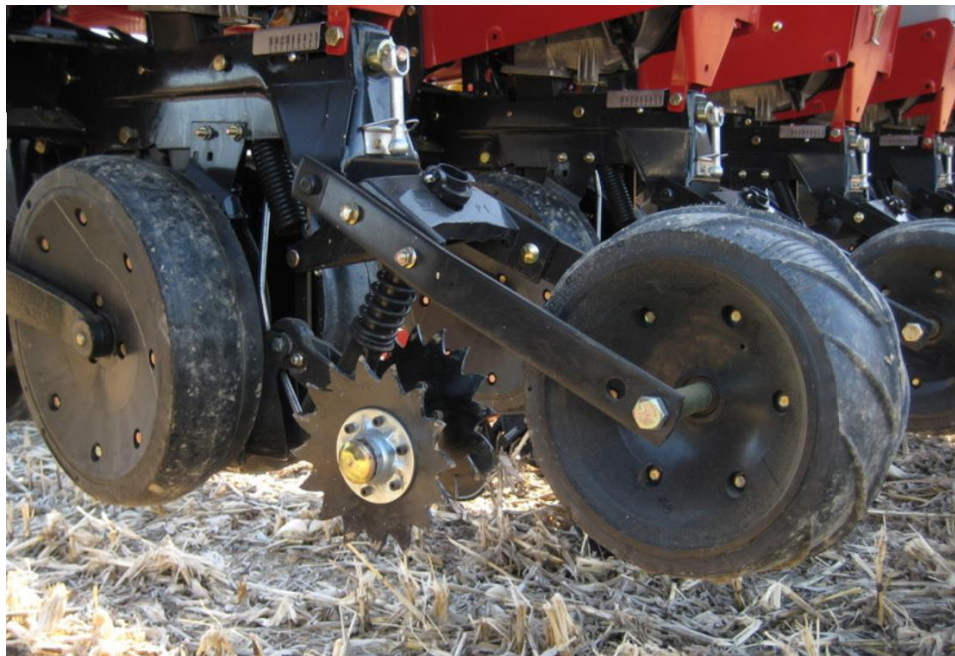
**6000-022**

SHARK TOOTH CLOSING DISC

INSTALLATION MANUAL

PART IDENTIFICATION

2565-777\_REV\_D • 09/2024



**YETTER MANUFACTURING CO.**  
*FOUNDED 1930*

Colchester, IL 62326-0358

Toll free: 800/447-5777

309/776-3222 (Fax)

Website: [www.yetterco.com](http://www.yetterco.com)

E-mail: [info@yetterco.com](mailto:info@yetterco.com)

**YETTER**


## FOREWORD


You've just joined an exclusive but rapidly growing club.  
For our part, we want to welcome you to the group and thank you for buying a Yetter product.


We hope your new Yetter products will help you achieve both goals-increase your productivity and increase your efficiency so that you may generate more profit.


This operator's manual has been designed into four major sections: Foreword, Safety Precautions, Installation Instructions and Parts Breakdown.

This **SAFETY ALERT SYMBOL** indicates important safety messages in the manual. When you see this symbol, be alert to the possibility of **PERSONAL INJURY** and carefully read the message that follows.

 **DANGER:** Indicates an imminently hazardous situation which, if not avoided "will" result in death or serious injury. This signal word is to be limited to the most extreme situations

 **WARNING:** Indicates a potentially hazardous situation which, if not avoided, "could" result in death or serious injury.

 **CAUTION:** Indicates a potentially hazardous situation, which if not avoided, "may" result in minor or moderate injury. It may also be used to alert against unsafe practices.

 **NOTICE:** Indicates information considered important, but not hazard related (e.g., messages relating to property damage).

It is the responsibility of the user to read the operator's manual and comply with the safe and correct operating procedure and to lubricate and maintain the product according to the maintenance schedule in the operator's manual.

The user is responsible for inspecting his machine and for having parts repaired or replaced when continued use of the product would cause damage or excessive wear to the other parts.

It is the user's responsibility to deliver his machine to the Yetter dealer who sold him the product for service or replacement of defective parts, which are covered by the warranty policy.

If you are unable to understand or follow the instructions provided in this publication, consult your local Yetter dealer or contact:

### YETTER MANUFACTURING CO.

309/776-4111

800/447-5777

309/776-3222 (FAX)

Website: [www.yetterco.com](http://www.yetterco.com)

E-mail: [info@yetterco.com](mailto:info@yetterco.com)

### WARRANTY POLICY

Yetter Manufacturing warrants all products manufactured and sold by it against defects in material. This warranty being expressly limited to replacement at the factory of such parts or products as will appear to be defective after inspection. This warranty does not obligate the Company to bear cost of labor in replacement of parts. It is the policy of the company to make improvements without incurring obligations to add them to any unit already sold. No warranty is made or authorized to be made, other than herein set forth. This warranty is in effect for one year after purchase.

Dealer : \_\_\_\_\_

Yetter Manufacturing warrants its own products only and cannot be responsible for damage to equipment on which mounted.



## SAFETY PRECAUTIONS



A brief description of signal words that may be used in this manual:

**DANGER**: Indicates an imminently hazardous situation which, if not avoided “will” result in death or serious injury. This signal word is to be limited to the most extreme situations.

**WARNING**: Indicates a potentially hazardous situation which, if not avoided, “could” result in death or serious injury.

**CAUTION**: Indicates a potentially hazardous situation, which if not avoided, “may” result in minor or moderate injury. It may also be used to alert against unsafe practices.

**NOTICE**: Indicates information considered important, but not hazard related (e.g., messages relating to property damage).

Consult your implement and tractor operator’s manual for correct and safe operating practices. Be aware of towed implement width and allow safe clearance.

Safety decals are placed on the implement to alert the operator and others to the risk of personal injury or unsafe operation during normal operations and servicing.

1. The safety decals must be kept clean and in good condition to ensure that they are legible.
2. Safety decals must be replaced if they are missing or illegible.
3. When components are replaced during repair or servicing, check that the new components include the necessary safety signs.
4. Replacement safety decals may be obtained from your local dealer.



### WARNING

Read these instructions carefully to acquaint yourself with the Equipment. Working with unfamiliar equipment can lead to accidents.

Never park the equipment on a steep incline or leave the equipment running unattended.

Never clean, lubricate or adjust a machine that is in motion.

Always check that straps are secure.

Make sure latches are in pinned position when moving equipment.

Do not allow children to operate this equipment.

Do not allow riders on the equipment, trailer and/or pick-up.

Use speed and caution dictated by the terrain being traversed. Do not operate on any slope steep enough to cause tipping or loss of control.

Read and understand the operator’s manual and require all other persons who will operate the equipment to do the same.

If operating on public roadways, where legal, be certain all lighting is operating properly and observe all traffic laws.

Beware of increased stopping distances and control effort when operating with implements attached.

Be familiar with all controls and be prepared to stop equipment quickly in an emergency.

**FAILURE TO HEED MAY RESULT IN PERSONAL INJURY OR DEATH.**

# BOLT TORQUE

## Mounting bolts and hardware

Before operating for the first time, check to be sure that all hardware is tight. Check all hardware again after approximately 50 hours of operation and at the beginning of each planting season.

All hardware is Grade 5 unless otherwise noted. Grade 5 cap screws are marked with three radial lines on the head. If hardware must be replaced, be sure to replace it with hardware of equal size, strength and thread type. Refer to the torque values chart when tightening hardware.



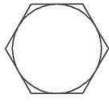


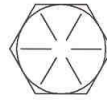
**NOTICE:** Over tightening hardware can cause as much damage as when under tightening. Tightening hardware beyond the recommended range can reduce its shock load capacity.

The chart below is a guide for proper torque. Use it unless a specified torque is called out elsewhere in the manual.

Torque is the force you apply to the wrench handle or the cheater bar, times the length of the handle or bar.

Use a torque wrench whenever possible.

The following table shows torque in ft. lbs. for coarse thread hardware.

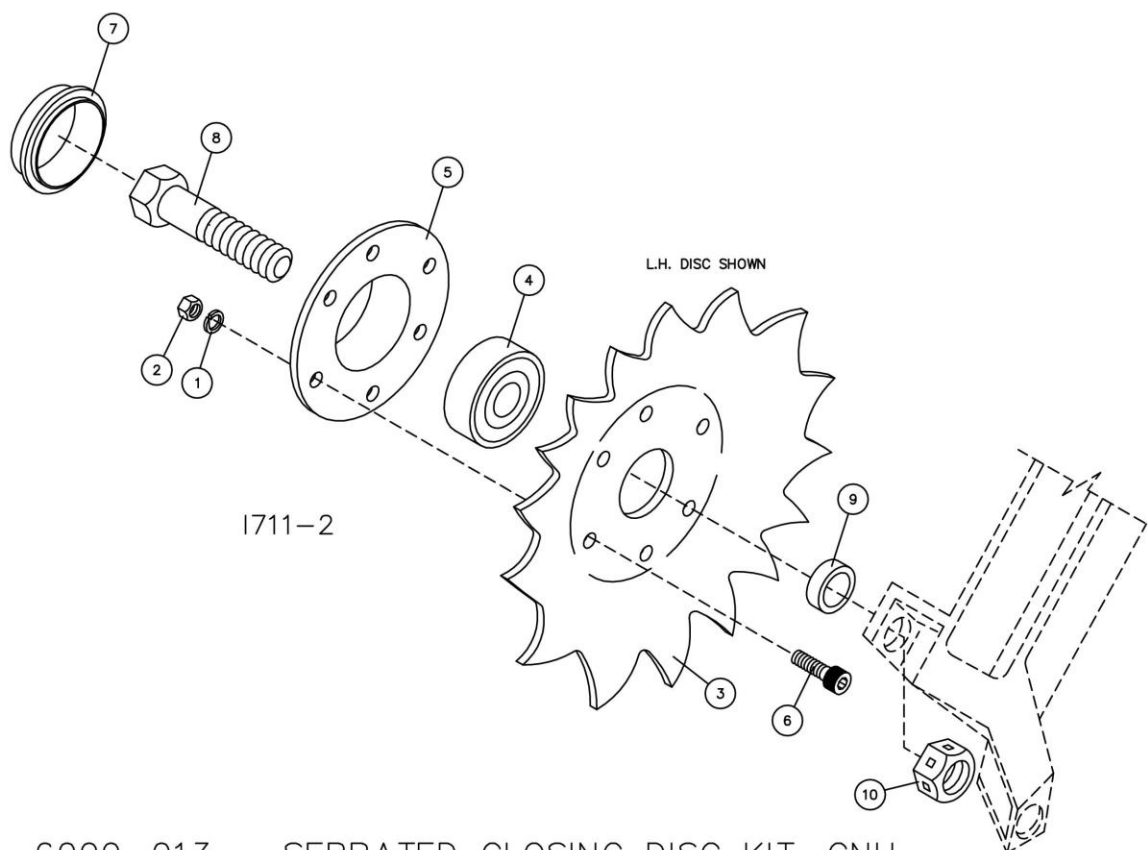
BOLT DIA. AND THREADS PER INCH	 GRADE 2	 OR  GRADE 5 A-325	 GRADE 8
3/8-16	25	35	50
7/16-14	35	55	80
1/2-13	55	85	125
9/16-12	75	125	175
5/8-11	105	170	235
3/4-10	185	305	425
7/8-9	170	445	690
1-8	260	670	1030
1 1/8-7	365	900	1460
1 1/4-7	515	1275	2060
1 3/8-6	675	1675	2700
1 1/2-6	900	2150	3500
1 3/4-5	1410	3500	5600

Lubricate all bearings and moving parts as assembled and make certain that they work freely.



**WARNING:** Never work around the toolbar/implement while in a raised position without using safety lockups.

## PARTS IDENTIFICATION

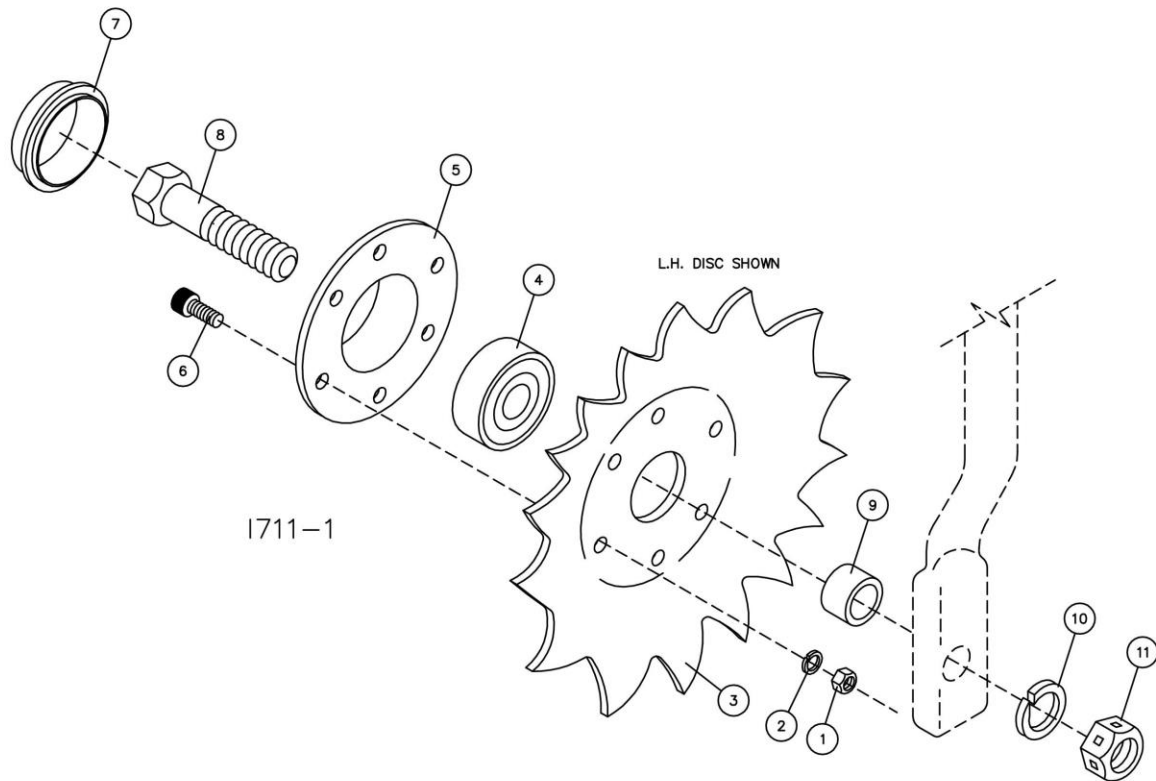


6000-013 – SERRATED CLOSING DISC KIT, CNH

DET	QTY	PART NO.	DESCRIPTION
1	6	2520-151	1/4-20 HEX NUT ZYD
2	6	2525-151	1/4 MED LOCK WASHER ZYD
3	1	6000-438	8" SERRATED CLOSING DISC, R.H.
	1	6000-437	8" SERRATED CLOSING DISC, L.H.
4	1	2550-328	PLANTER COULTER BRG. 204RY2
5	1	2570-711	HOUSING, BEARING J.D.#A51984
6	6	2513-510	1/4-20 X 3/4 SHCS BLACK
7	1	2570-542	DUST CAP, STEEL
8	1	2502-391	5/8-11 X 2 HHCS GR 5 ZYD.
9	1	2967-468	9/32" BUSHING
10	1	2520-459	5/8-11 HEX LOCK NUT ZYD.

**MANUFACTURED 08/2004 – 05/2018**

## PARTS IDENTIFICATION



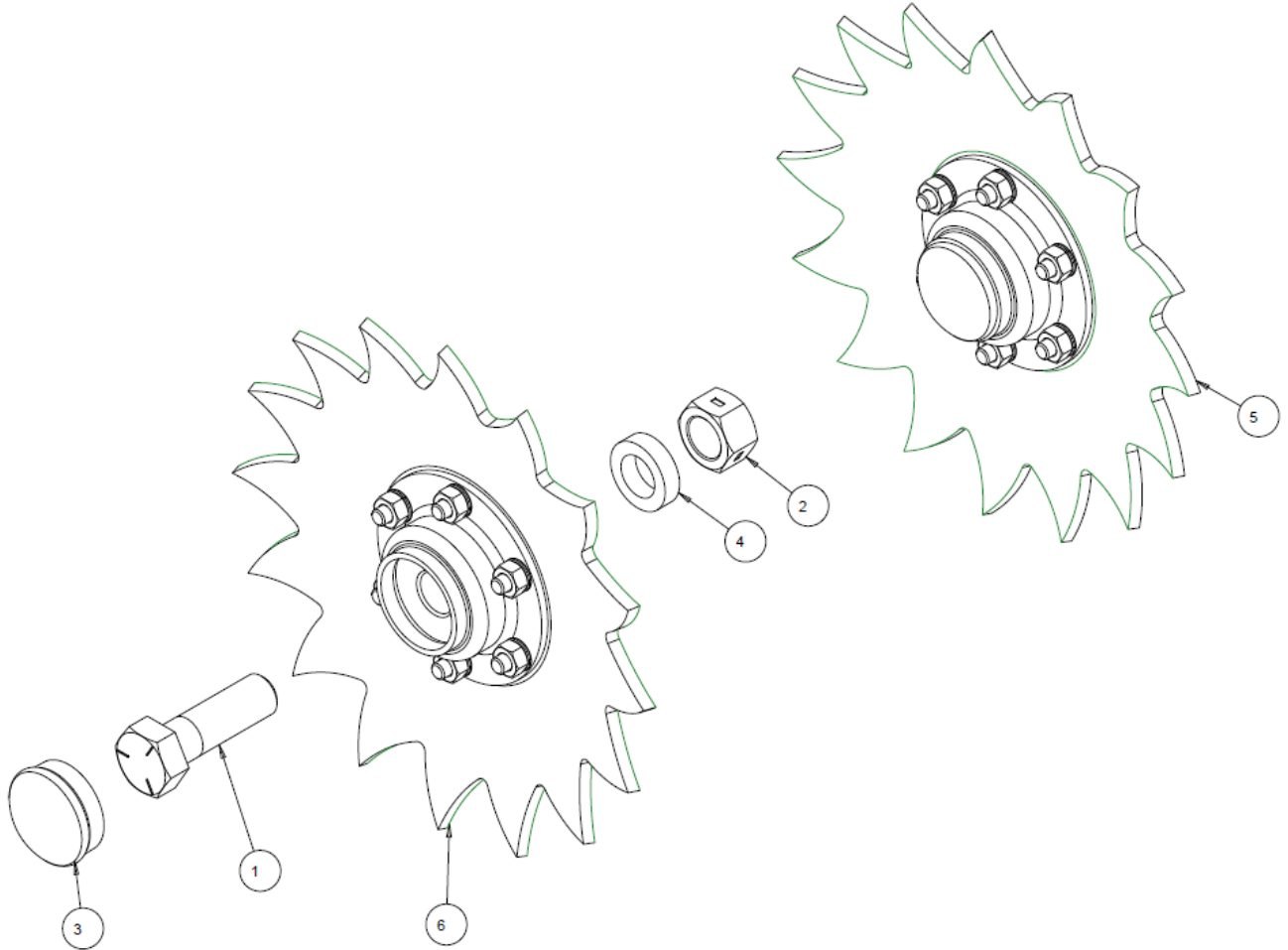
### 6000-014 — SERRATED CLOSING DISC KIT, JD

DET	QTY	PART NO.	DESCRIPTION
1	6	2520-151	1/4-20 HEX NUT ZYD
2	6	2525-151	1/4 MED LOCK WASHER ZYD
3	1	6000-438	8" SERRATED CLOSING DISC, R.H.
	1	6000-437	8" SERRATED CLOSING DISC, L.H.
4	1	2550-328	PLANTER COULTER BRG. 204RY2
5	1	2570-711	HOUSING, BEARING J.D.#A51984
6	6	2513-510	1/4-20 X 3/4 SHCS BLACK
7	1	2570-542	DUST CAP, STEEL
8	1	2502-393	5/8-11 X 2-1/2 HHCS GR 5 ZYD.
9	1	6000-335	9/16" BUSHING
10	1	2525-451	5/8 MED LOCK WASHER ZYD.
11	1	2520-459	5/8-11 HEX LOCK NUT ZYD.

**MANUFACTURED 08/2004 – 05/2018**



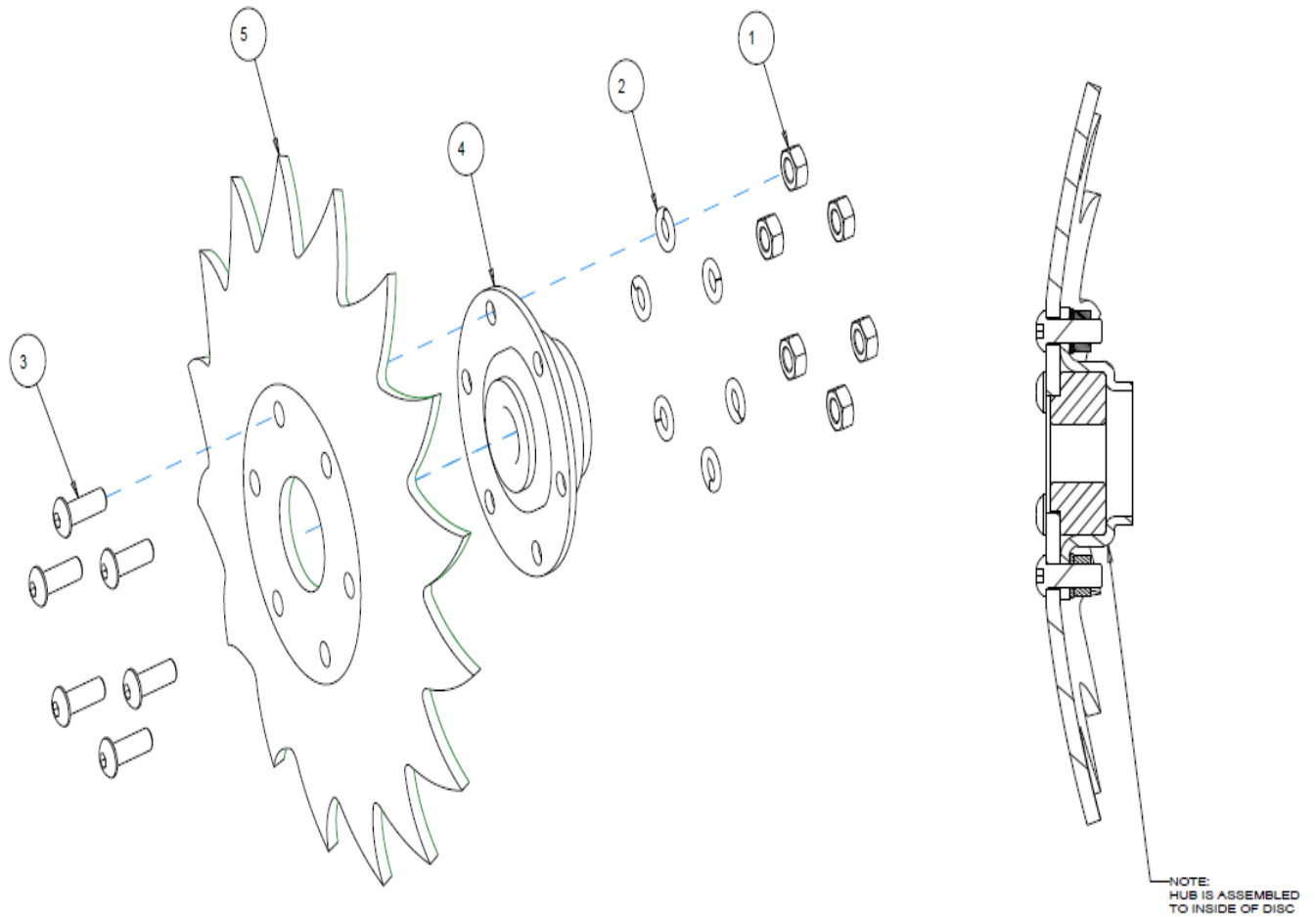
**PARTS IDENTIFICATION**  
**6000-013A**  
**8" SERRATED CLOSING DISC KIT**



ITEM	PART NO.	DESCRIPTION	QTY
1	2502-391	5/8-11 X 2 HHCS GR 5 ZP	2
2	2520-459	5/8-11 LOCK HEX NUT, GR B, ZP	2
3	2570-789	HUB CAP	2
4	2967-468	9/32" PIVOT ARM BUSHING	2
5	6000-108 8"	SERRATED CLOSE DISC ASSY, LH, CNH 1	
6	6000-109 8"	SERRATED CLOSE DISC ASSY. RH, CNH 1	

MFG. 06/2018 TO CURRENT

**PARTS IDENTIFICATION**  
**6000-108\_REV F**  
**LEFT HAND 8" SERRATED CLOSING DISC (CNH)**

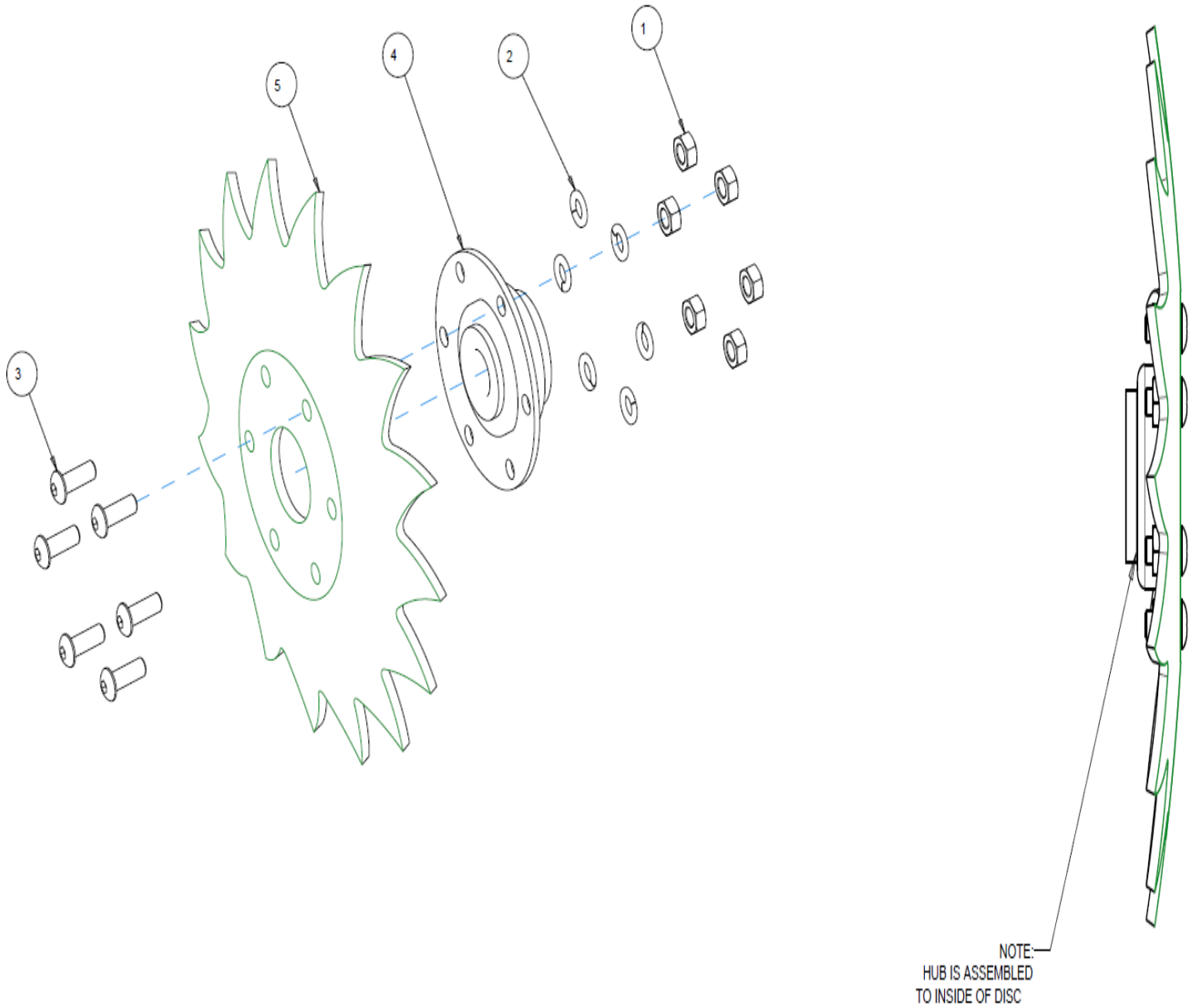


ITEM	PART NO.	DESCRIPTION	QTY
1	2520-151	1/4-20 HEX NUT ZP	6
2	2525-151	1/4 MED. LOCKWASHER ZP.	6
3	2570-202	1/4 -20 X 3/4 BHSCS ZP	6
4	6000-198	BEARING & HUB ASSEMBLY	1
5	6000-438	8" SERRATED CLOSING DISC, LH	1

MFG 06/2018 TO CURRENT



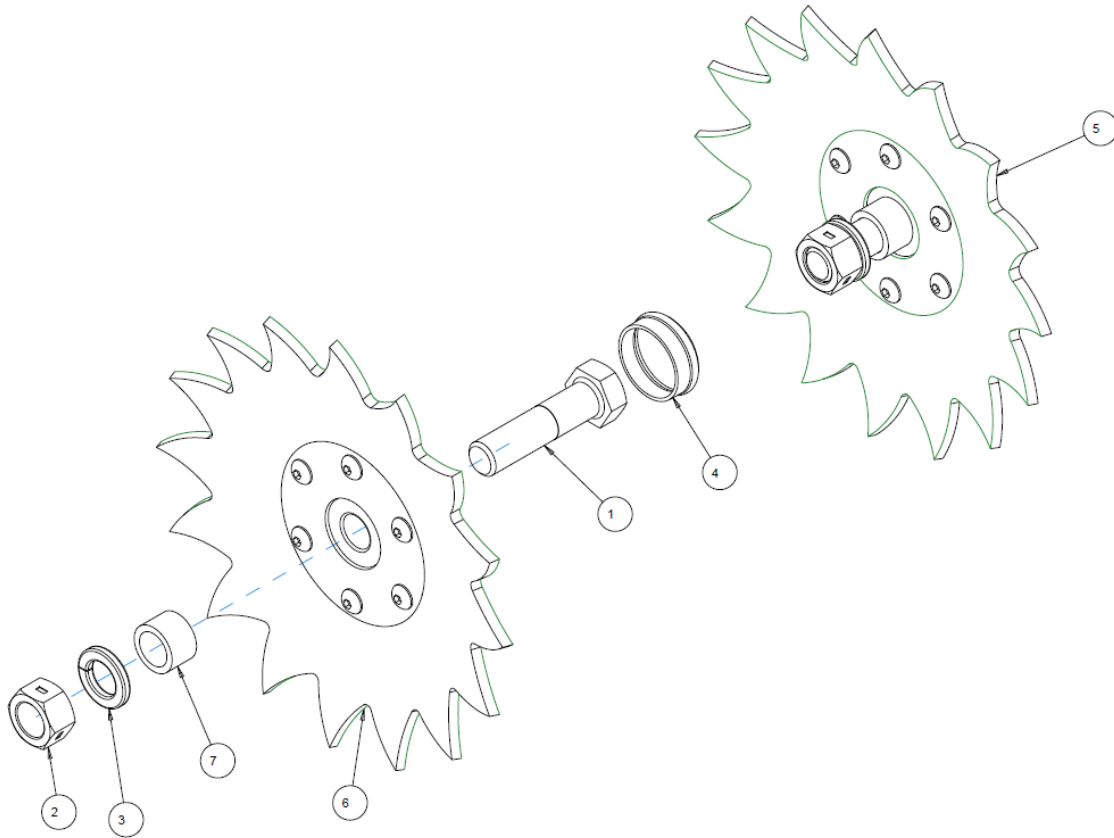
**PARTS IDENTIFICATION**  
**6000-109\_REV G**  
**RIGHT HAND 8" SERRATED CLOSING DISC (CNH)**



ITEM	PART NO.	DESCRIPTION	QTY
1	2520-151	1/4-20 HEX NUT ZP	6
2	2525-151	1/4 MED. LOCKWASHER ZP.	6
3	2570-202	1/4 -20 X 3/4 BHSCS ZP	6
4	6000-198	BEARING & HUB ASSEMBLY	1
5	6000-437	8" SERRATED CLOSING DISC, RH	1

**MFG 06/2018 TO CURRENT**

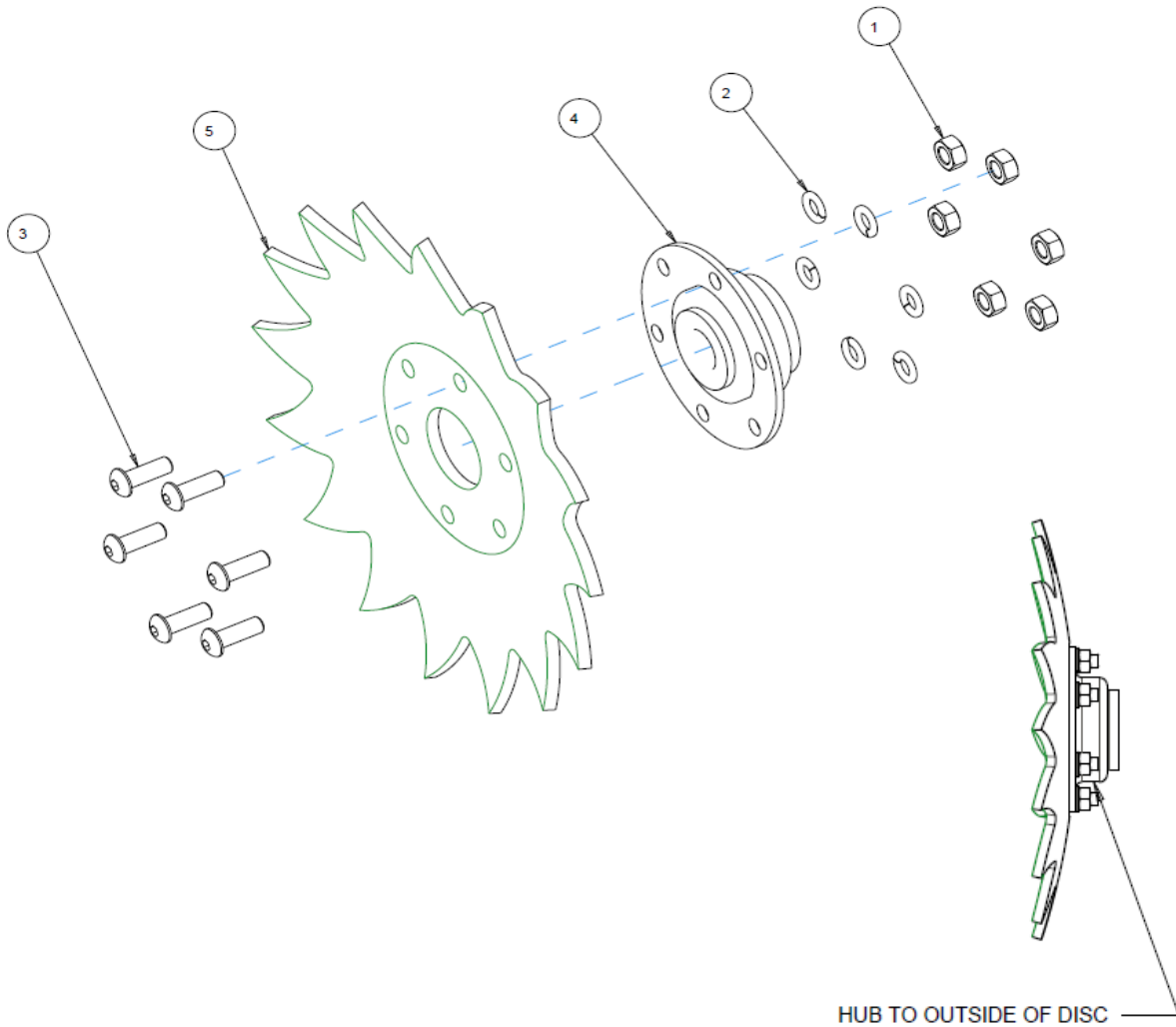
**PARTS IDENTIFICATION**  
**6000-014A**  
**8" SERRATED CLOSING DISC KIT (JD)**



ITEM	PART NO.	DESCRIPTION	QTY
1	2502-393	5/8-11 X 2 1/2 HHCS GR5 ZP	2
2	2520-459	5/8-11 LOCK HEX NUT, GR B, ZP	2
3	2525-451	5/8 MED. LOCKWASHER ZP.	2
4	2570-789	HUB CAP	2
5	6000-114	8" SERR CLOSE DISC ASS'Y LH JD	1
6	6000-115	8" SERR CLOSE DISC ASS'Y RH JD	1
7	6000-335	9/16" BUSHING	2

MFG. 06/2018 TO CURRENT

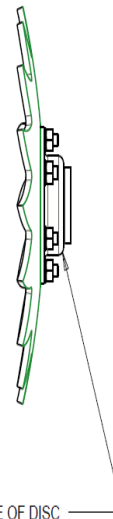
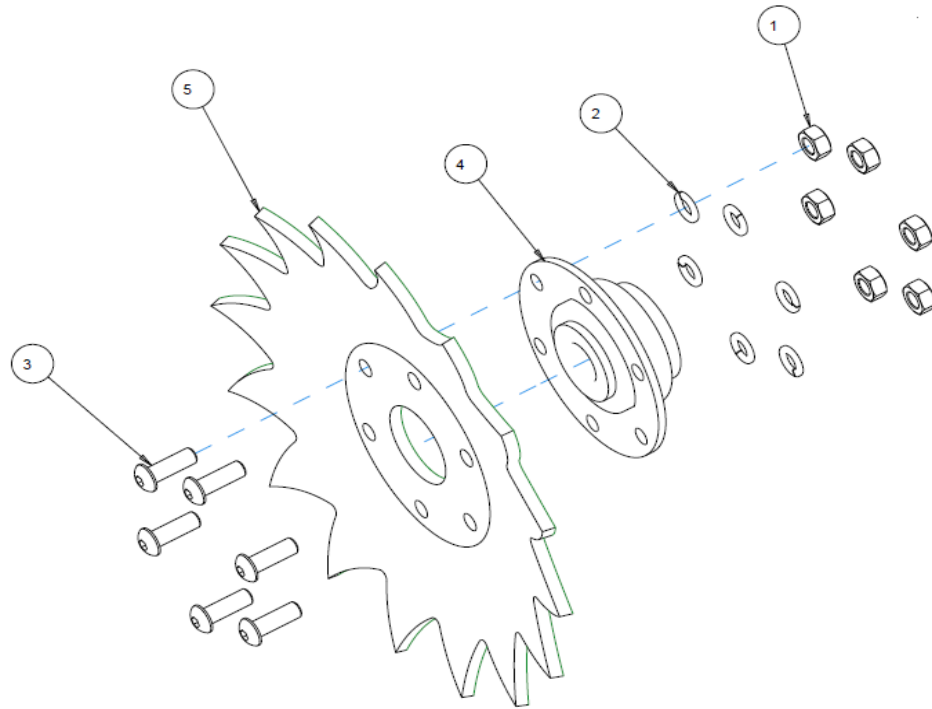
**PARTS IDENTIFICATION**  
**6000-114**  
**LEFT HAND 8" SERRATED CLOSING DISC (JD)**



ITEM	PART NO.	DESCRIPTION	QTY
1	2520-151	1/4-20 HEX NUT ZP	6
2	2525-151	1/4 MED. LOCKWASHER ZP.	6
3	2570-202	1/4 -20 X 3/4 BHSCS ZP	6
4	6000-198	BEARING & HUB ASSEMBLY	1
5	6000-438	8" SERRATED CLOSING DISC, LH	1

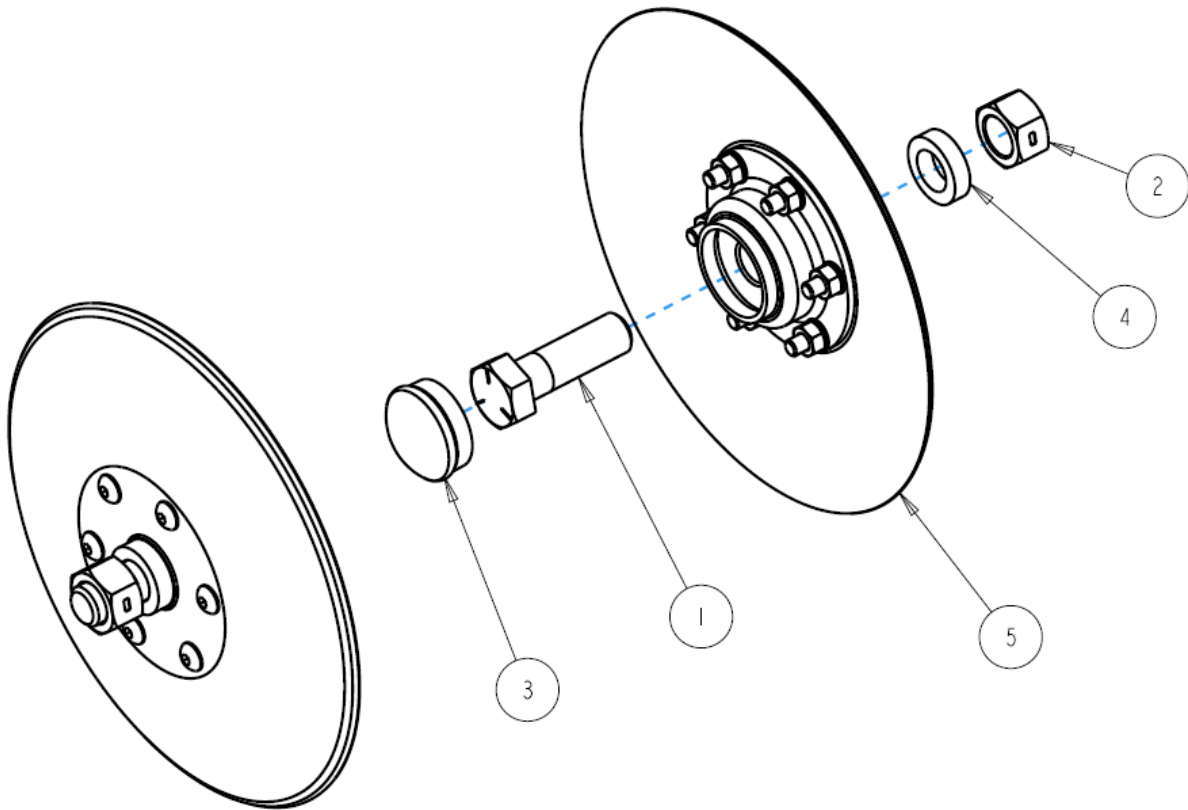
MFG. 06/2018 TO CURRENT

**PARTS IDENTIFICATION**  
**6000-115**  
**RIGHT HAND 8" SERRATED CLOSING DISC (JD)**



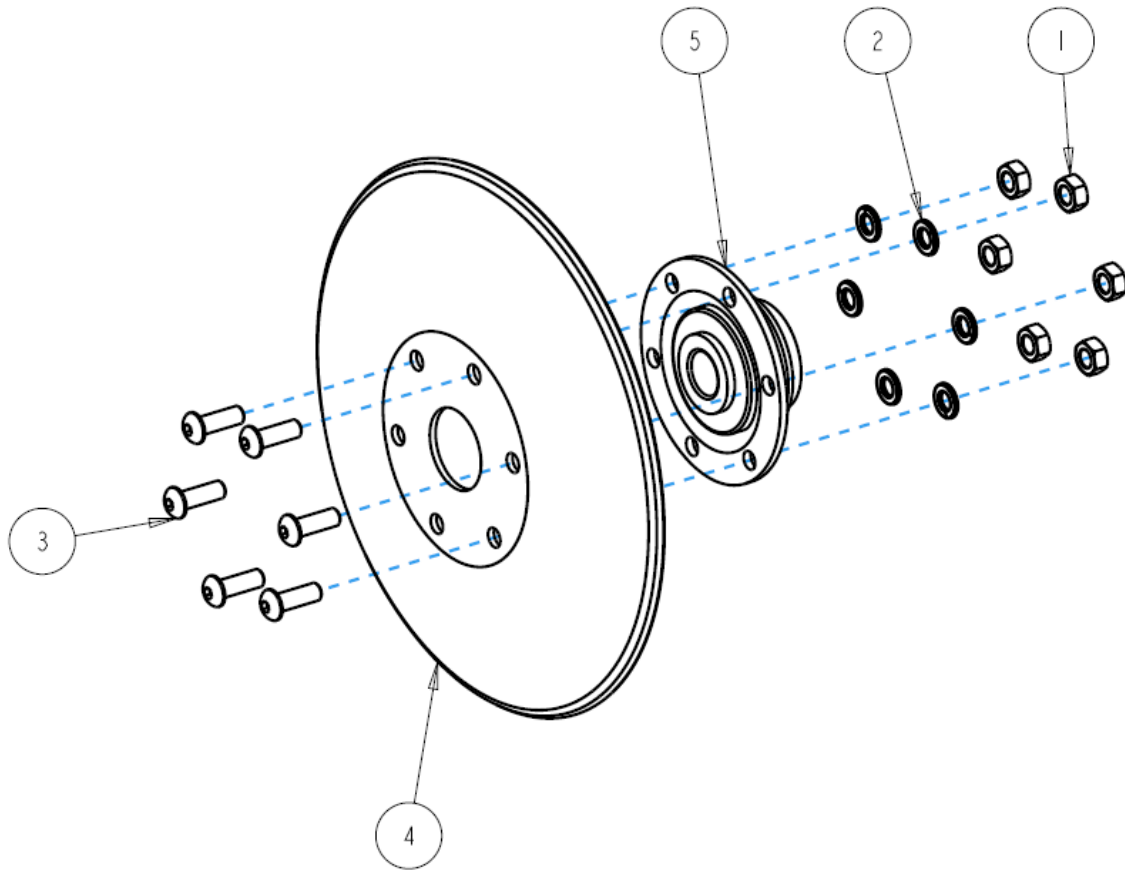
ITEM	PART NO.	DESCRIPTION	QTY
1	2520-151	1/4-20 HEX NUT ZP	6
2	2525-151	1/4 MED. LOCKWASHER ZP.	6
3	2570-202	1/4 -20 X 3/4 BHSCS ZP	6
4	6000-198	BEARING & HUB ASSEMBLY	1
5	6000-437	8" SERRATED CLOSING DISC, RH	1

**PARTS IDENTIFICATION**  
**6000-017**  
**8" SMOOTH CLOSING DISC KIT CASEIH**



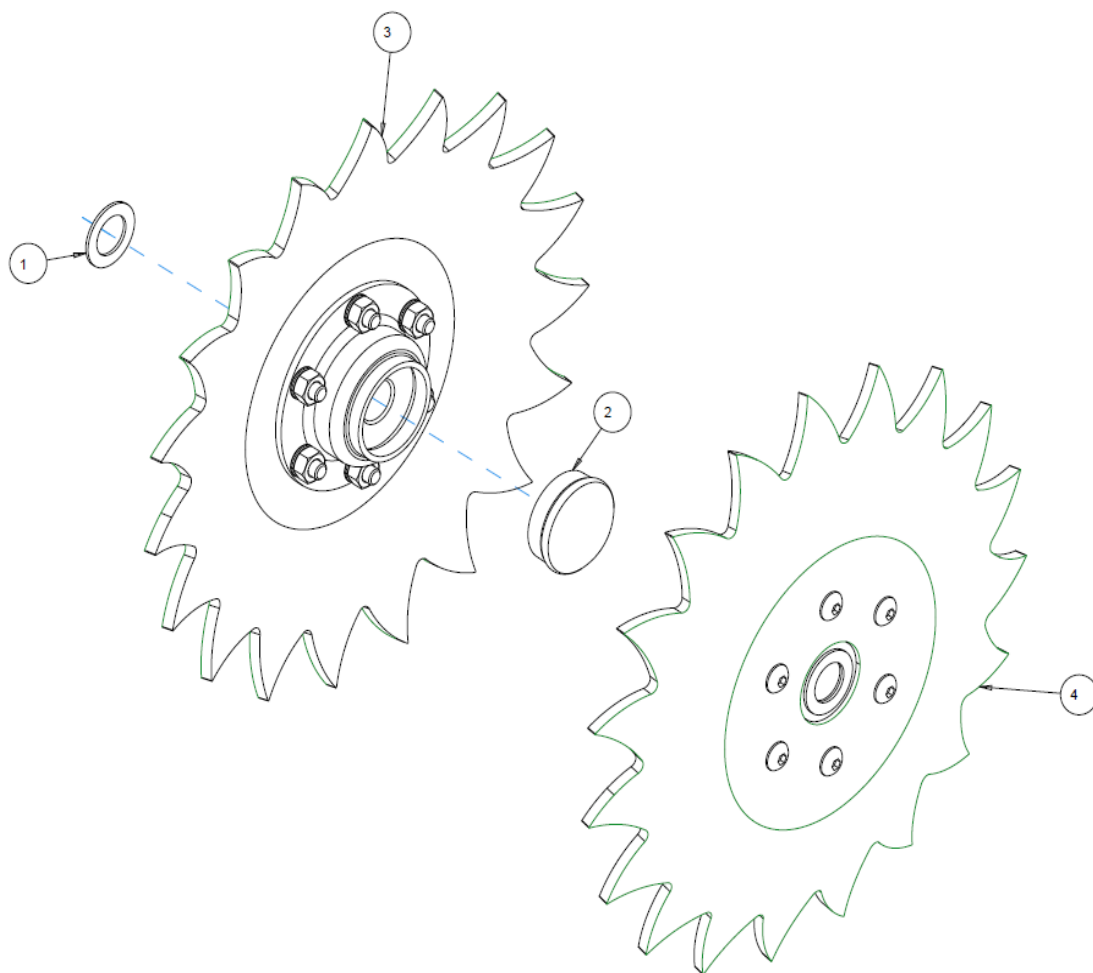
ITEM	PART NO.	DESCRIPTION	QTY
1	2502-391	5/8-11 X 2 HHCS GR 5 ZP	2
2	2520-459	5/8-11 LOCK HEX NUT, GR B, ZP	2
3	2570-789	HUB CAP	2
4	2967-468	9/32" PIVOT ARM BUSHING	2
5	6000-113	8" SMOOTH CLOSE DISC ASSY, CNH	2

**PARTS IDENTIFICATION**  
**6000-113**  
**8" SMOOTH CLOSING DISC ASSEMBLY CASEIH**



ITEM	PART NO.	DESCRIPTION	QTY
1	2520-151	1/4-20 HEX NUT ZP	6
2	2525-151	1/4 MED. LOCKWASHER ZP.	6
3	2570-202	1/4 -20 X 3/4 BHSCS ZP	6
4	2571-437	8" SMOOTH CLOSING DISC	1
5	6000-198	BEARING & HUB ASSEMBLY	1

# PARTS IDENTIFICATION 6000-021 9" SERRATED CLOSING DISC KIT



ITEM	PART NO.	DESCRIPTION	QTY
1	2527-562	5/8IDX1ODX.049+-002M BU ZP	2
2	2570-789	HUB CAP	2
3	6000-110	9" CLOSING DISC ASSEMBLY, RH	1
4	6000-111	9" CLOSING DISC ASSEMBLY, LH	1

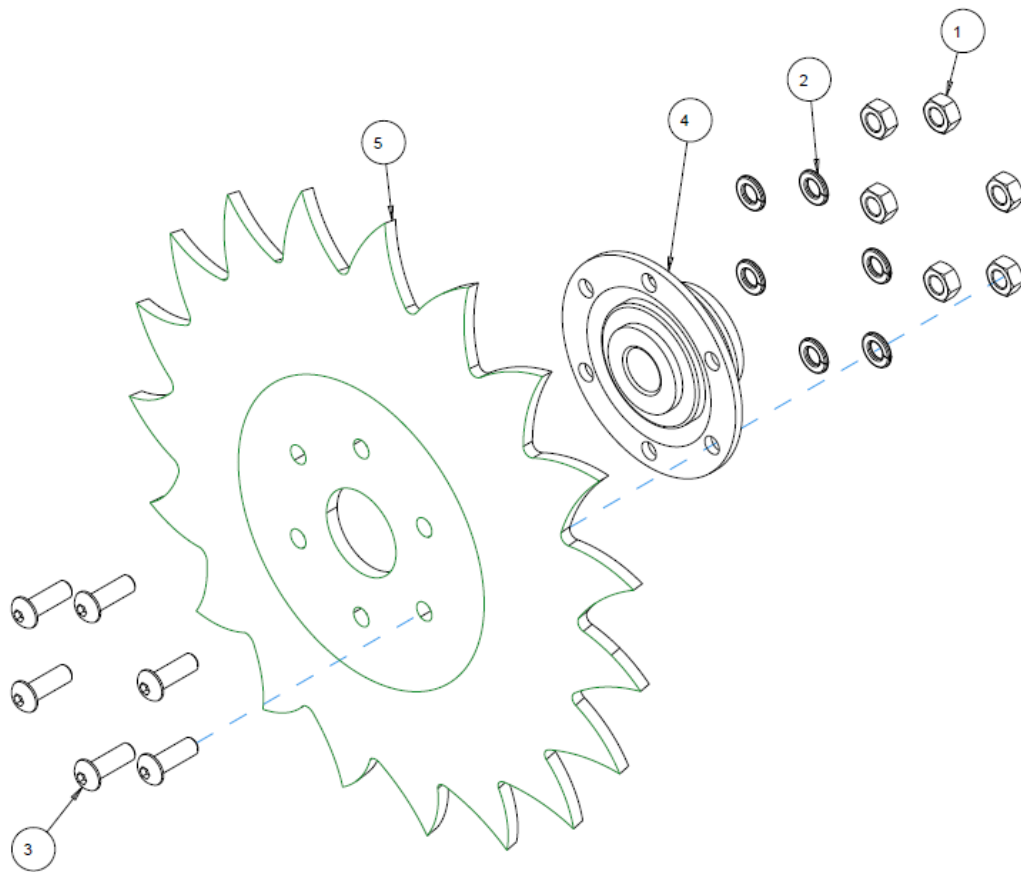




# PARTS IDENTIFICATION

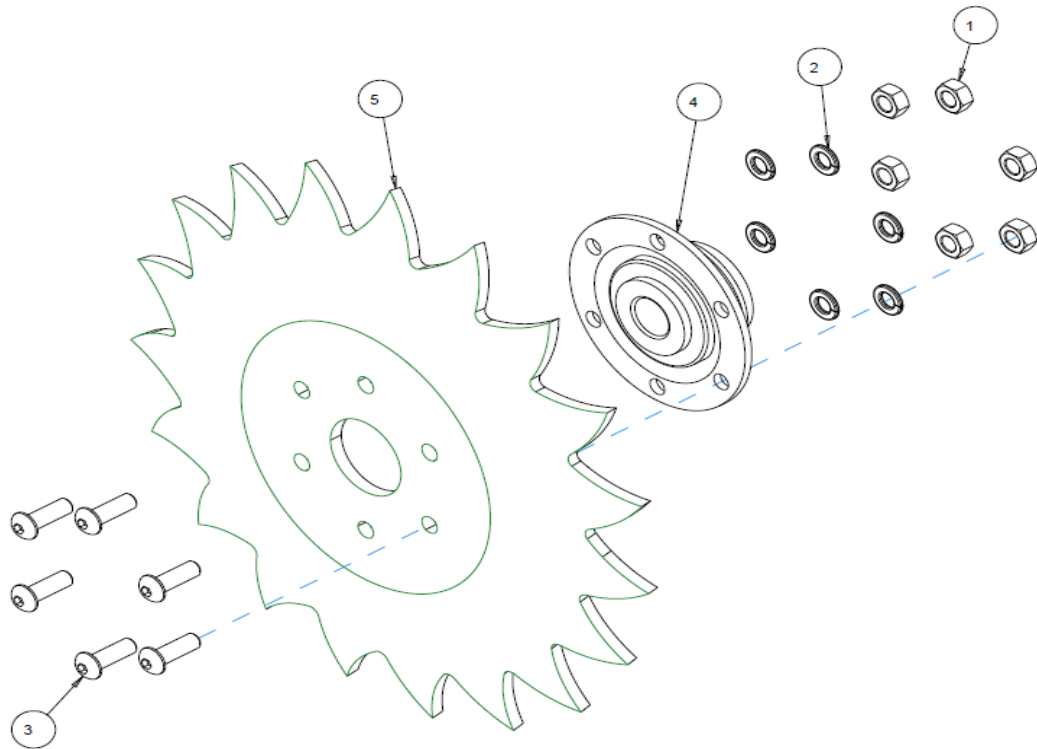
## 6000-110

### RIGHT HAND 9" SERRATED CLOSING DISC KIT



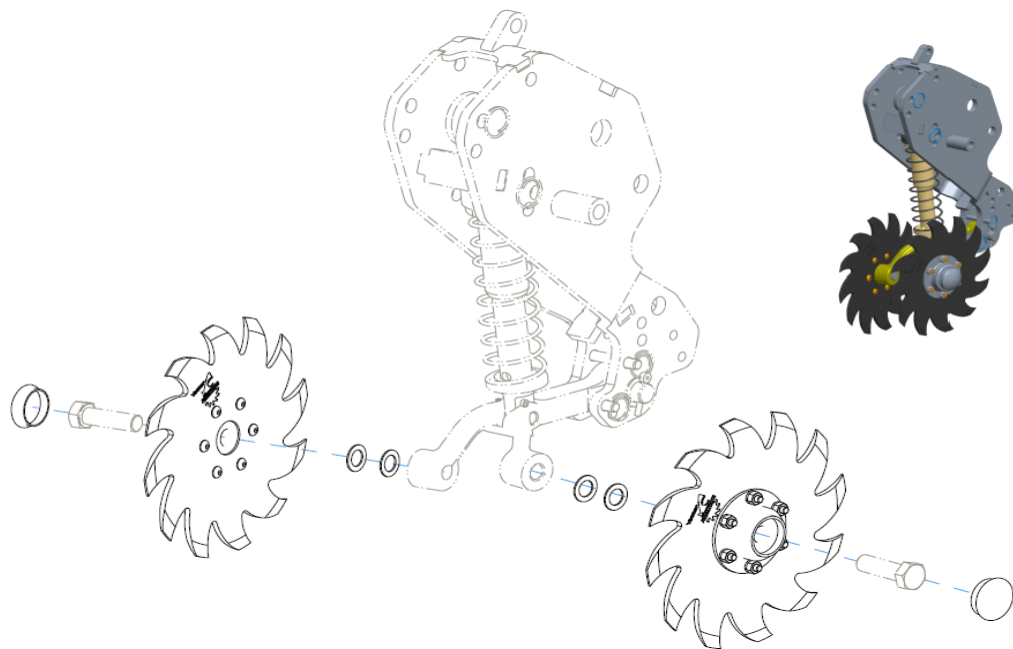
ITEM	PART NO.	DESCRIPTION	QTY
1	2520-151	1/4-20 HEX NUT ZP	6
2	2525-151	1/4 MED. LOCKWASHER ZP.	6
3	2570-202	1/4 -20 X 3/4 BHSCS ZP	6
4	6000-198	BEARING & HUB ASSEMBLY	1
5	6000-439	9" SERRATED CLOSING DISC, RH	1

# PARTS IDENTIFICATION 6000-111 LEFT HAND 9" SERRATED CLOSING DISC KIT

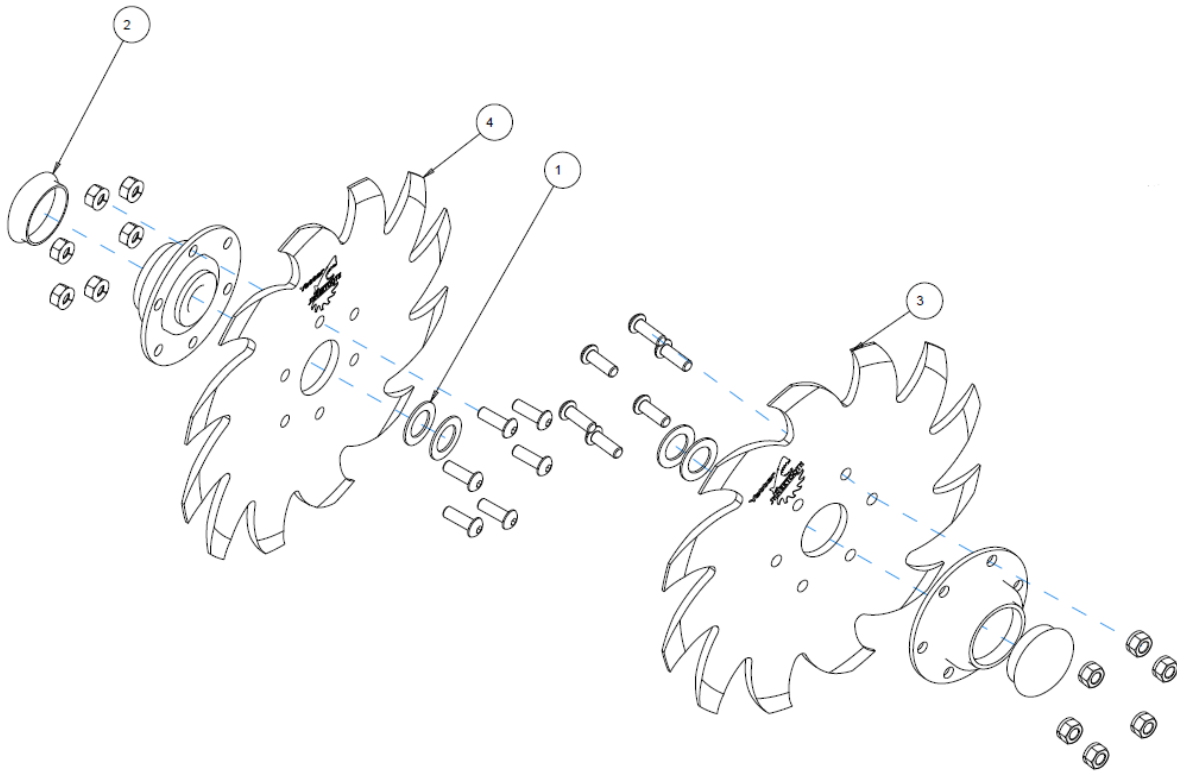


ITEM	PART NO.	DESCRIPTION	QTY
1	2520-151	1/4-20 HEX NUT ZP	6
2	2525-151	1/4 MED. LOCKWASHER ZP.	6
3	2570-202	1/4 -20 X 3/4 BHSCS ZP	6
4	6000-198	BEARING & HUB ASSEMBLY	1
5	6000-440	9" SERRATED CLOSING DISC, LH	1

ASSEMBLY  
6000-022  
9" SHARKTOOTH CLOSING DISC KIT



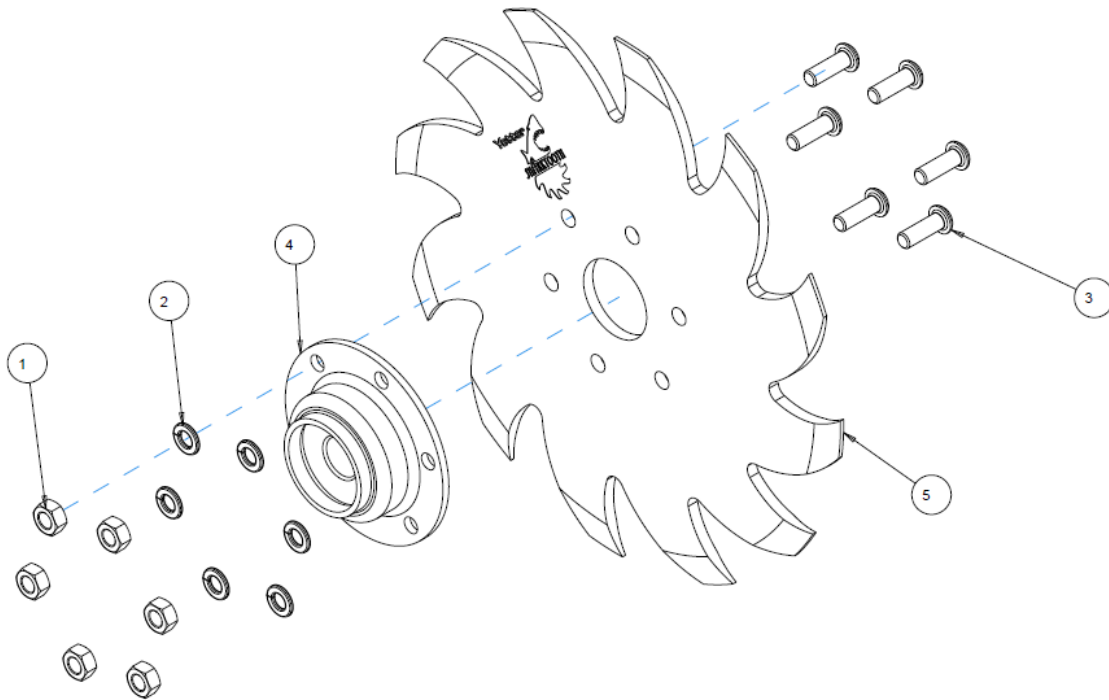
# PARTS IDENTIFICATION 6000-022 9" SHARKTOOTH CLOSING DISC KIT



ITEM	PART NO.	DESCRIPTION	QTY
1	2527-562	5/8IDX1ODX.049+-002M BU ZP	4
2	2570-789	HUB CAP	2
3	6000-116	9" CLOSING DISC ASSEMBLY, RH	1
4	6000-117	9" CLOSING DISC ASSEMBLY, LH	1

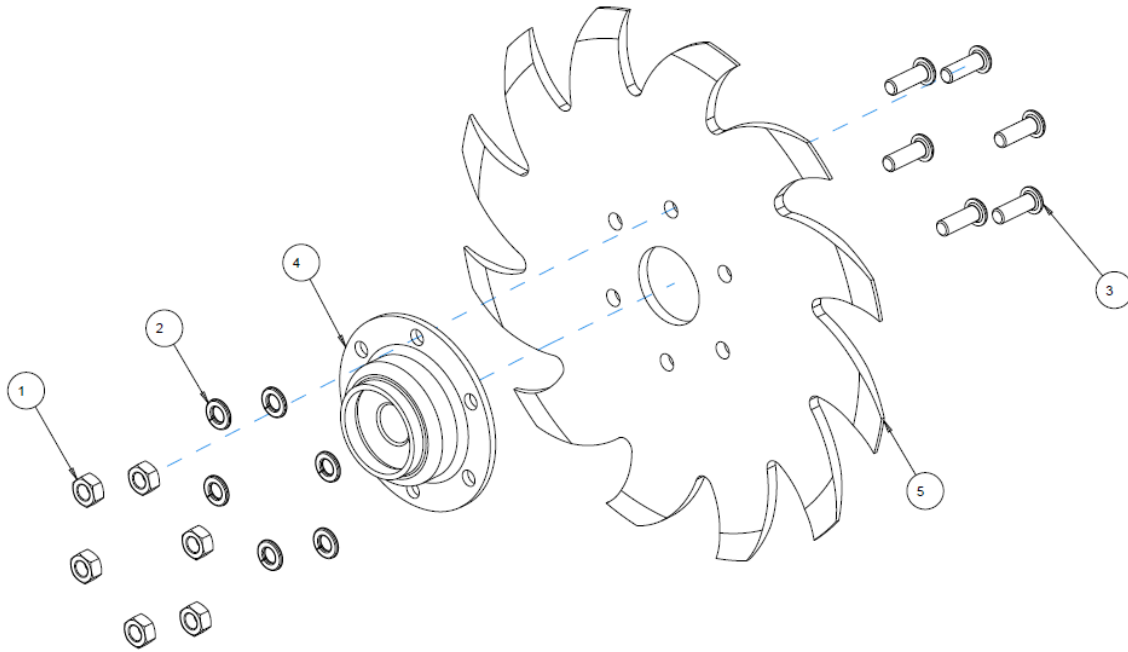


# PARTS IDENTIFICATION 6000-116 RIGHT HAND DISC ASSEMBLY



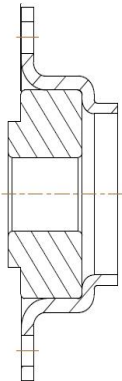
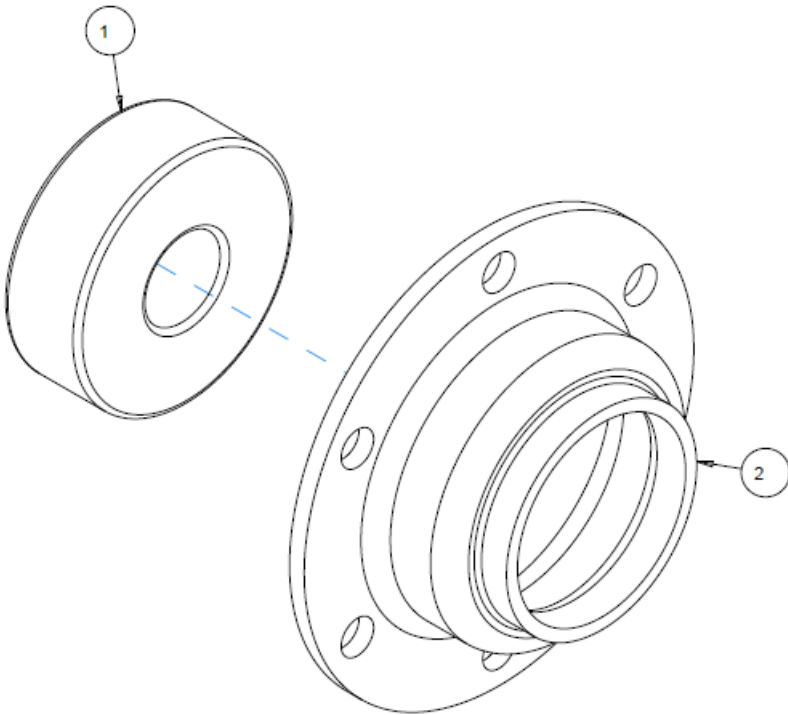
ITEM	PART NO.	DESCRIPTION	QTY
1	2520-151	1/4-20 HEX NUT ZP	6
2	2525-151	1/4 MED. LOCKWASHER ZP.	6
3	2570-202	1/4 -20 X 3/4 BHSCS ZP	6
4	6000-198	BEARING & HUB ASSEMBLY	1
5	6000-441	9" SHARK TOOTH WHEEL, WITH CHAMFER	1

# PARTS IDENTIFICATION 6000-117 LEFT HAND DISC ASSEMBLY



ITEM	PART NO.	DESCRIPTION	QTY
1	2520-151	1/4-20 HEX NUT ZP	6
2	2525-151	1/4 MED. LOCKWASHER ZP.	6
3	2570-202	1/4 -20 X 3/4 BHSCS ZP	6
4	6000-198	BEARING & HUB ASSEMBLY	1
5	6000-441	9" SHARK TOOTH WHEEL, WITH CHAMFER	1

# PARTS IDENTIFICATION 6000-198 BEARING/HUB ASSEMBLY



ITEM	PART NO.	DESCRIPTION	QTY
1	2550-071	BEARING	1
2	2570-788	HOUSING	1



## NOTES

# Our name Is getting known

Just a few years ago, Yetter products were sold primarily to the Midwest only. Then we embarked on a program of expansion and moved into the East, the South, the West and now north into Canada. We're even getting orders from as far away as Australia and Africa.

So, when you buy Yetter products . . .you're buying a name that's recognized. A name that's known and respected. A name that's become a part of American agriculture and has become synonymous with quality and satisfaction in the field of conservation tillage.

Thank you.

**YETTER MANUFACTURING CO.**

Colchester, IL 62326-0358 • 309/776-4111

Toll Free 800/447-5777

Fax 309/776-3222

Website: [WWW.YETTERCO.COM](http://WWW.YETTERCO.COM)

E-MAIL: [INFO@YETTERCO.COM](mailto:INFO@YETTERCO.COM)

2565-777\_REV\_D • 09/2024