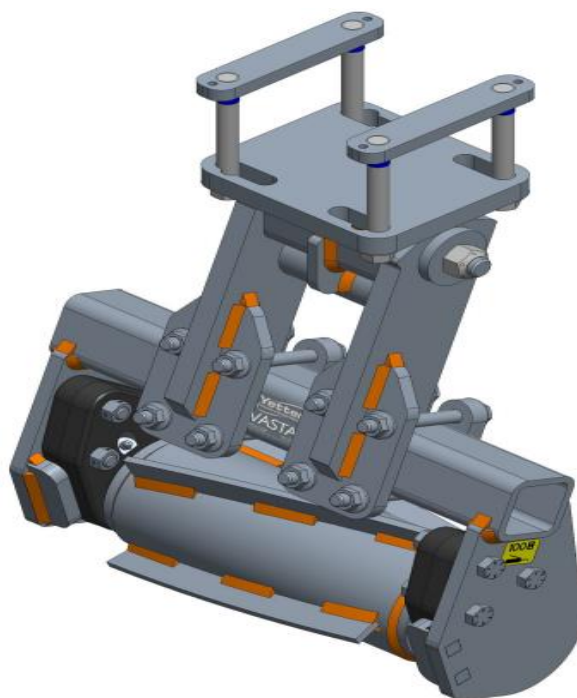




## **5000-090C SINGLE ROW SERIES STALK DEVASTATOR**

OWNER'S MANUAL  
PART IDENTIFICATION  
2565-972-Rev-C • 07/2025



**YETTER MANUFACTURING CO.**

Founded 1930

Colchester, IL 62326

Toll free: (800)447-5777.

Fax: (309)776-3222

Website: [yetterco.com](http://yetterco.com)

E-mail: [info@yetterco.com](mailto:info@yetterco.com)

# **YETTER**

# TABLE OF CONTENTS

FOREWARD.....	2
WARRANTY.....	2
SAFETY INFORMATION.....	3 – 4
TORQUE.....	4
BILL OF MATERIALS & TOOLS NEEDED.....	5
ASSEMBLY INSTRUCTIONS.....	5 – 6
LOCK UP / OPERATION.....	7
STORAGE/TRANSPORT/MAINTENANCE.....	7
PART IDENTIFICATION.....	8
TROUBLESHOOTING.....	9

## FOREWORD

You've just joined an exclusive but rapidly growing club.

For our part, we want to welcome you to the group and thank you for buying a Yetter product.

We hope your new Yetter products will help you achieve both goals-increase your productivity and increase your efficiency so that you may generate more profit.

This operator's manual has been designed into 4 major sections: Foreword, Safety Precautions, Installation Instructions and Parts Breakdown.

This **SAFETY ALERT SYMBOL** indicates important safety messages in the manual. When you see this symbol, be alert to the possibility of **PERSONAL INJURY** & carefully read the message that follows.

The word **NOTE** is used to convey information that is out of context with the manual text. It contains special information such as specifications, techniques and reference information of a supplementary nature.

The word **IMPORTANT** is used in the text when immediate damage will occur to the machine due to improper technique or operation.

Important will apply to the same information as specified by note only of an immediate and urgent nature.

It is the responsibility of the user to read the operator's manual and comply with the safe and correct operating procedure and to lubricate and maintain the product according to the maintenance schedule in the operator's manual.

The user is responsible for inspecting his machine and for having parts repaired or replaced when continued use of the product would cause damage or excessive wear to the other parts.

It is the user's responsibility to deliver his machine to the Yetter dealer who sold him the product for service or replacement of defective parts, which are covered by the warranty policy.

If you are unable to understand or follow the instructions provided in this publication, consult your local Yetter dealer or contact:

**YETTER MANUFACTURING CO.**

309/776-4111

800/447-5777

309/776-3222 (FAX)

Website: [www.yetterco.com](http://www.yetterco.com)

E-mail: [info@yetterco.com](mailto:info@yetterco.com)

## WARRANTY

Yetter Manufacturing warrants all products manufactured and sold by it against defects in material. This warranty being expressly limited to replacement at the factory of such parts or products as shall appear to be defective after inspection. This warranty does not obligate the Company to bear cost of labor in replacement of parts. It is the policy of the Company to make improvements without incurring obligations to add them to any unit already sold. No warranty is made or authorized to be made, other than herein set forth. This warranty is in effect for one year after purchase.

DEALER: \_\_\_\_\_

**Yetter Manufacturing warrants its own products only & cannot be responsible for damages to equipment on which mounted.**

# SAFETY PRECAUTIONS

These **SAFETY ALERT SYMBOLS** indicate important safety messages in the manual. When you see these symbols, be alert to the possibility of **PERSONAL INJURY** and carefully read the message that follows.

**A brief description of signal words that may be used in this manual:**



**DANGER**: Indicates an imminently hazardous situation which, if not avoided “will” result in death or serious injury. This signal word is to be limited to the most extreme situations



**WARNING**: Indicates a potentially hazardous situation which, if not avoided, “could” result in death or serious injury.



**CAUTION**: Indicates a potentially hazardous situation, which if not avoided, “may” result in minor or moderate injury. It may also be used to alert against unsafe practices.



**NOTICE**: Indicates information considered important, but not hazard related (e.g., messages relating to property damage).

It is the responsibility of the user to read the operator’s manual and comply with the safe and correct operating procedure and to lubricate and maintain the product according to the maintenance schedule in the operator’s manual.

The user is responsible for inspecting his machine and for having parts repaired or replaced when continued use of the product would cause damage or excessive wear to the other parts.

It is the user’s responsibility to deliver his machine to the Yetter dealer who sold him the product for service or replacement of defective parts, which are covered by the warranty policy.

**Consult your implement and tractor operator’s manual for correct and safe operating practices. Be aware of towed implement width and allow safe clearance.**

Safety decals are placed on the implement to alert the operator and others to the risk of personal injury or unsafe operation during normal operations and servicing.

1. The safety decals must be kept clean and in good condition to ensure that they are legible.
2. Safety decals must be replaced if they are missing or illegible.
3. When components are replaced during repair or servicing, check that the new components include the necessary safety signs.
4. Replacement safety decals may be obtained from your local dealer.



## WARNING

**Read these instructions carefully to acquaint yourself with the Equipment. Working with unfamiliar equipment can lead to accidents.**

**Never park the equipment on a steep incline or leave the equipment running unattended.**

**Never clean, lubricate or adjust a machine that is in motion.**

**Always check that straps are secure.**

**Make sure latches are in pinned position when moving equipment.**

**Do not allow children to operate this equipment.**

**Do not allow riders on the equipment, trailer and/or pick-up.**

**Use speed & caution dictated by terrain being traversed. Do NOT operate on any slope steep enough to cause tipping/loss of control.**

**Read and understand the operator’s manual and require all other persons who will operate the equipment to do the same.**

**If operating on public roadways, where legal, be certain all lighting is operating properly and observe all traffic laws.**

**Beware of increased stopping distances and control effort when operating with implements attached.**

**Be familiar with all controls and be prepared to stop equipment quickly in an emergency.**



**FAILURE TO HEED MAY RESULT IN PERSONAL INJURY OR DEATH.**



## CAUTION

**SECURE CORN HEADER AGAINST UNWANTED LOWERING BY APPLYING CYLINDER STOP ON HYD. CYLINDERS!**



1. Attach head to combine, lock head to combine
2. Raise the head off the ground and engage safety stop on the feeder house cylinder.
3. Turn off combine engine and remove the key

Subject to the size and weight of the corn header, one or two additional hydraulic cylinders may be required.

The combine manufacturer generally keeps corresponding kits readily available for dealers.

Subject to the design of the corn header and the carrying capacity of different combines, the steering axle may require the fitting of additional weights and the rear tires be filled with ballast.

**FOLLOW ALL INSTRUCTIONS GIVEN BY THE COMBINE MANUFACTURER**

## DEVASTATOR OPERATION CHECKLIST

Please fill this out after the Yetter Stalk Devastator has been installed.

DATE \_\_\_/\_\_\_/\_\_\_ YETTER KIT # - 5000-\_\_\_ CORN HEAD MAKE/MODEL \_\_\_\_\_

COMBINE MAKE/MODEL \_\_\_\_\_ FRONT TIRE SIZE \_\_\_\_\_ REAR TIRE SIZE \_\_\_\_\_

REAR AXLE POSITION \_\_\_\_\_ SNAPPING ROLLS USING \_\_\_\_\_ CHOPPING BLADES YES / NO  
DECK PLATE ANGLE \_\_\_\_\_° (USE ANGLE FINDER) SNAPPING ROLL HEIGHT (OPERATING POSITION) \_\_\_\_\_ INCHES

HARVEST SPEED \_\_\_\_\_ MPH HEAD SPEED \_\_\_\_\_ ANGLE TORSION ARM (OPERATING POSITION - USE  
ANGLE FINDER) \_\_\_\_\_

HEAD CART INFO: MAKE/MODEL \_\_\_\_\_ LENGTH \_\_\_\_\_ TIRE SIZE \_\_\_\_\_

**SEE PAGE 7 FOR CORN HEAD & TRAILER ADJUSTMENTS**

## BOLT TORQUE



**NOTE:** Over-tightening hardware can cause as much damage as under-tightening. Tightening hardware beyond recommended range can reduce its shock load capacity. All hardware on 5000 Devastator is either GR5/GR8, unless noted. GR5 cap screws are marked with 3 radial lines on head. GR8 cap screws are marked with 6 radial lines on head. If hardware must be replaced, be sure to replace it with hardware of equal size, strength & thread type. Refer to torque value chart when tightening hardware. The chart below is a guide for proper torque. Use it unless a specific torque is called out elsewhere in the manual. Torque is force applied to end of handle or cheater bar, times the length of the handle or bar.

**Use a torque wrench wherever possible.** The following table shows torque in ft.-lbs. for coarse thread hardware.

Bolt Diameter and Threads per Inch	Grade 2	Grade 5	A-325	Grade 8	Bolt Diameter	4.6	8.8	10.9	12.9
1/4	6	10		14		4.6	8.8	10.9	12.9
5/16	12	20		30	M4	0.9	2.3	3.2	3.8
3/8 - 16	25	35		50	M5	1.8	4.5	6.5	7.6
7/16 - 14	35	55		80	M6	3.0	7.7	11.1	13.0
1/2 - 13	55	85		125	M7	5.0	13.0	18.5	21.7
9/16 - 12	75	125		175	M8	7.3	18.8	26.9	31.4
5/8 - 11	105	170		235	M10	14.4	37.2	53.2	62.2
3/4 - 10	185	305		425	M12	25.2	64.9	92.8	108.5
7/8 - 9	170	445		690	M14	40.2	103.7	148.4	173.4
1 - 8	260	670		1030	M16	62	161	230	269
1 1/8 - 7	365	900		1460	M18	86	222	318	372
1 1/4 - 7	515	1275		2060	M20	122	314	449	525
1 3/8 - 6	675	1675		2700	M22	166	428	613	716
1 1/2 - 6	900	2150		3500	M24	211	543	777	908
1 3/4 - 5	1410	3500		5600	M27	309	796	1139	1331

# PICTORIAL PART LIST



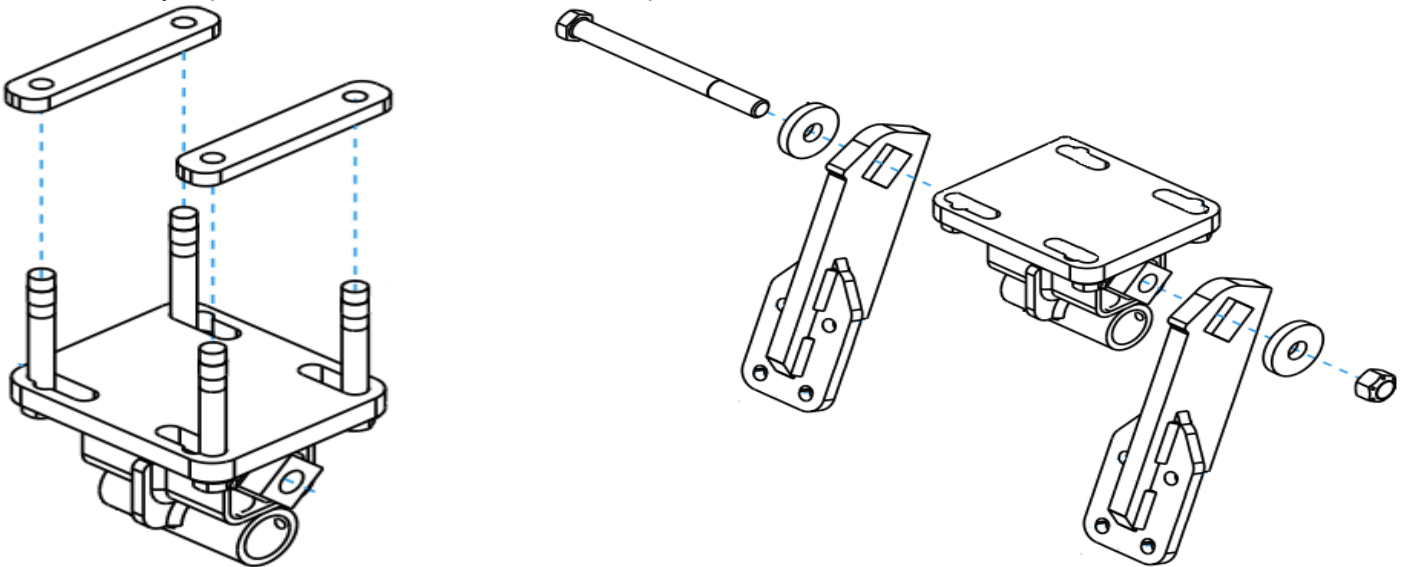
**NOTE: BEFORE ASSEMBLY BEGINS, CHECK THAT ALL PARTS WERE RECEIVED BY GOING THRU THE CRATE & SORTING PARTS, USE BILL OF MATERIAL LIST BELOW**

**5000-090C – 1 ROW DEVASTATOR – 1) 5000-147 LOCKING TORSION MOUNT, 1) 5000-160A BEARING BB, 1) 5000-176B 1 ROW TORSION MOUNT BB, 1) 5000-2001 1 ROW ROLLER, 1) 5000-2002A 1 ROW ROLLER MOUNT, 2) 5000-2012 TORSION ARM**

## ASSEMBLY INSTRUCTIONS

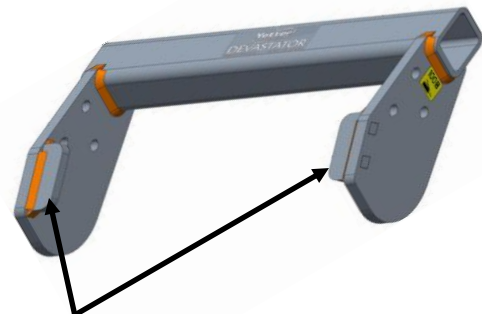
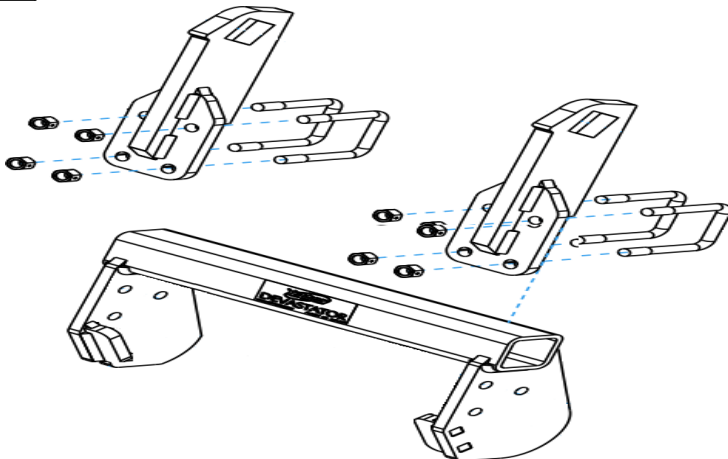
**Step 1:** Attach 5000-147 torsion pivot to frame using 2) 5000-420 clamp straps & 4) 2502-805 M16 bolts or 4) 2502-806 bolts.

**Step 2:** Attach 2) 5000-2012 torsion arms to torsion pivot assemblies. The torsion arm goes over the square torsion axle. Place 1) 5000-469 security cap over the 2502-430  $\frac{3}{4}$  X 8 bolt, slide bolt with cap through hole in the torsion axle, followed by another 5000-469 security cap, and then fasten the 2520-604  $\frac{3}{4}$  top lock nut.



**Step 3:** Install 5000-2002 roller mount to torsion arms using 2570-568  $\frac{1}{2}$  X 2  $\frac{1}{2}$  X 3  $\frac{1}{2}$  U-bolts & 2520-357  $\frac{1}{2}$  lock hex nuts.

**NOTE: MAKE SURE THE BEARING SUPPORT TAB ON THE ROLLER MOUNT IS ON THE BACK SIDE.**



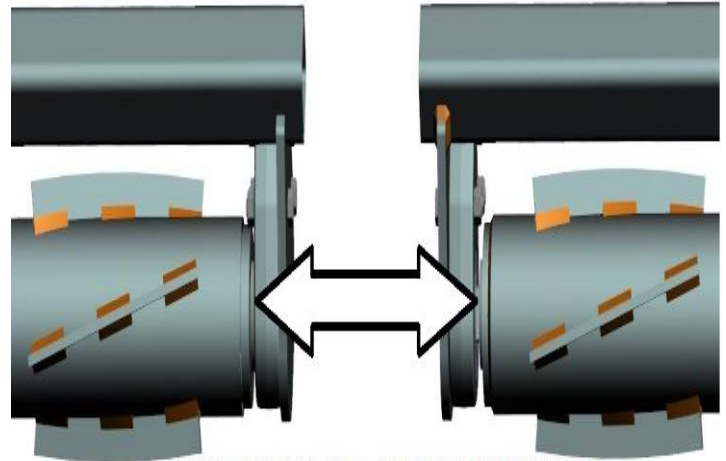
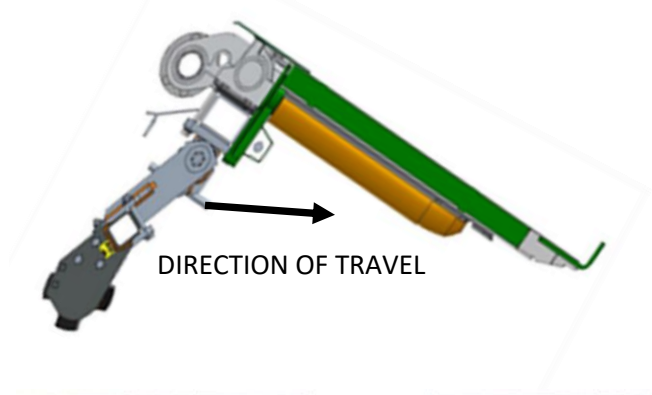
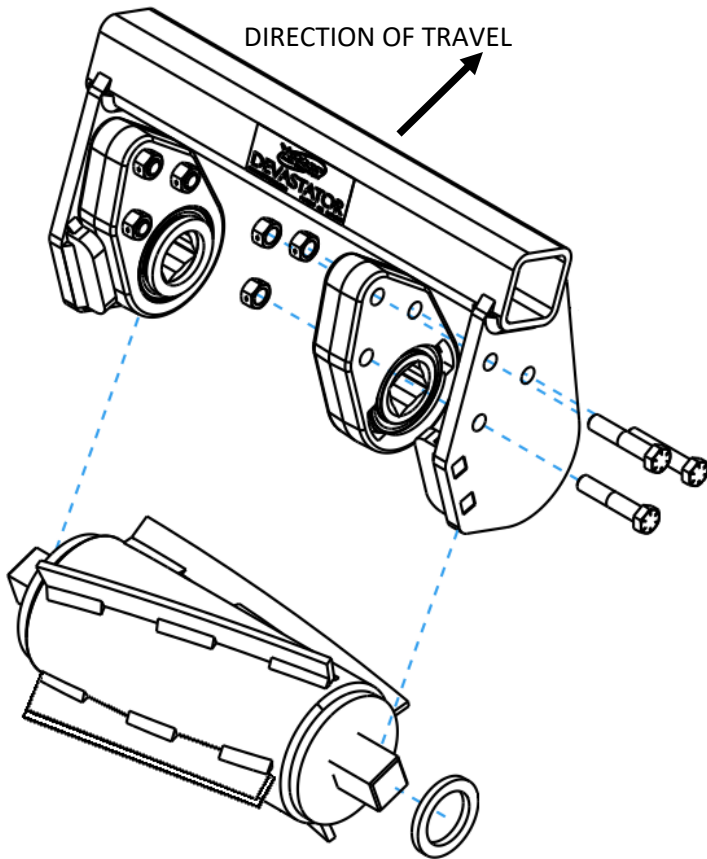
Bearing Support Tab should be on back side of the roller

# ASSEMBLY INSTRUCTIONS

**Step 4:** Place 1) 5000-322 shim washer over the shaft on each end of roller. Place 1) 5000-355 bearing over the shaft on each end of roller making sure that the side of the bearing protruding outside the cast housing faces towards the roller. Lift the roller assembly with bearings into place on the roller mount tube aligning the 3 holes on each bearing casting with the 3 holes on each bearing mount plate on roller mount tube. Mount each bearing to the roller mount using 3) ½" X 2 ½" bolts & 3) ½ lock nuts. When each bearing is fastened into place, spin the roller to ensure correct installation. Roller should spin freely.



**NOTE:** The shim washer must be installed between roller & bearing. The notches of the bearing housing must face the mounting plate. The extended race on the bearing will face towards the roller.

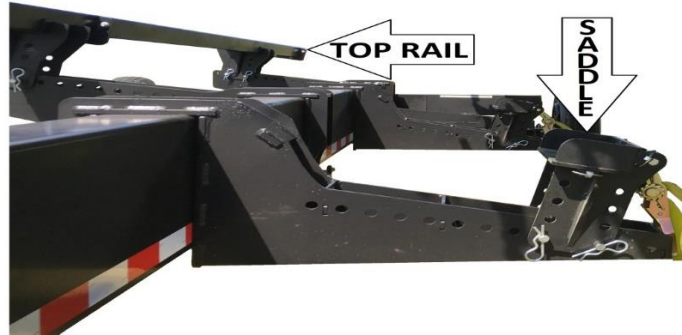
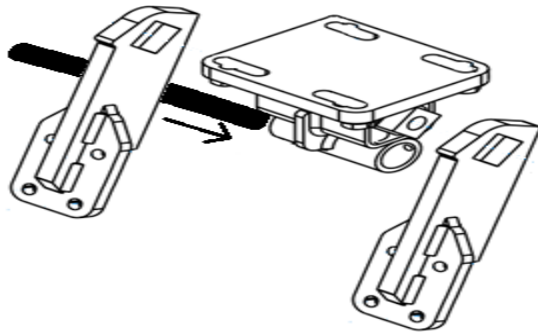


THE SIDE OF THE BEARING ASSEMBLY WHERE THE BEARING IS PROTRUDING MUST BE INSTALLED TOWARD THE ROLLER!



## LOCK UP

To “lock up” the Devastator roller, install a rod through the hole in the bottom of the torsion mount bracket, in front of the pivot arms. A Lock Pin can be ordered to lock up the devastators, 3841-302.



## OPERATION

**CORN HEAD ANGLE NEEDS TO BE ADJUSTED BETWEEN 23 – 25° FOR OPTIMUM DEVASTATOR PERFORMANCE. USE THE 5000-455 TO CHECK CORN HEAD ANGLE:**

- Put the combine on a level surface. Lower the Corn head to your normal working head height.
- Place the magnetic protractor on the stripper plate to get the angle. Adjust the feeder house as needed, fore or aft, to achieve 23 – 25 degrees.



## STORAGE/TRANSPORT

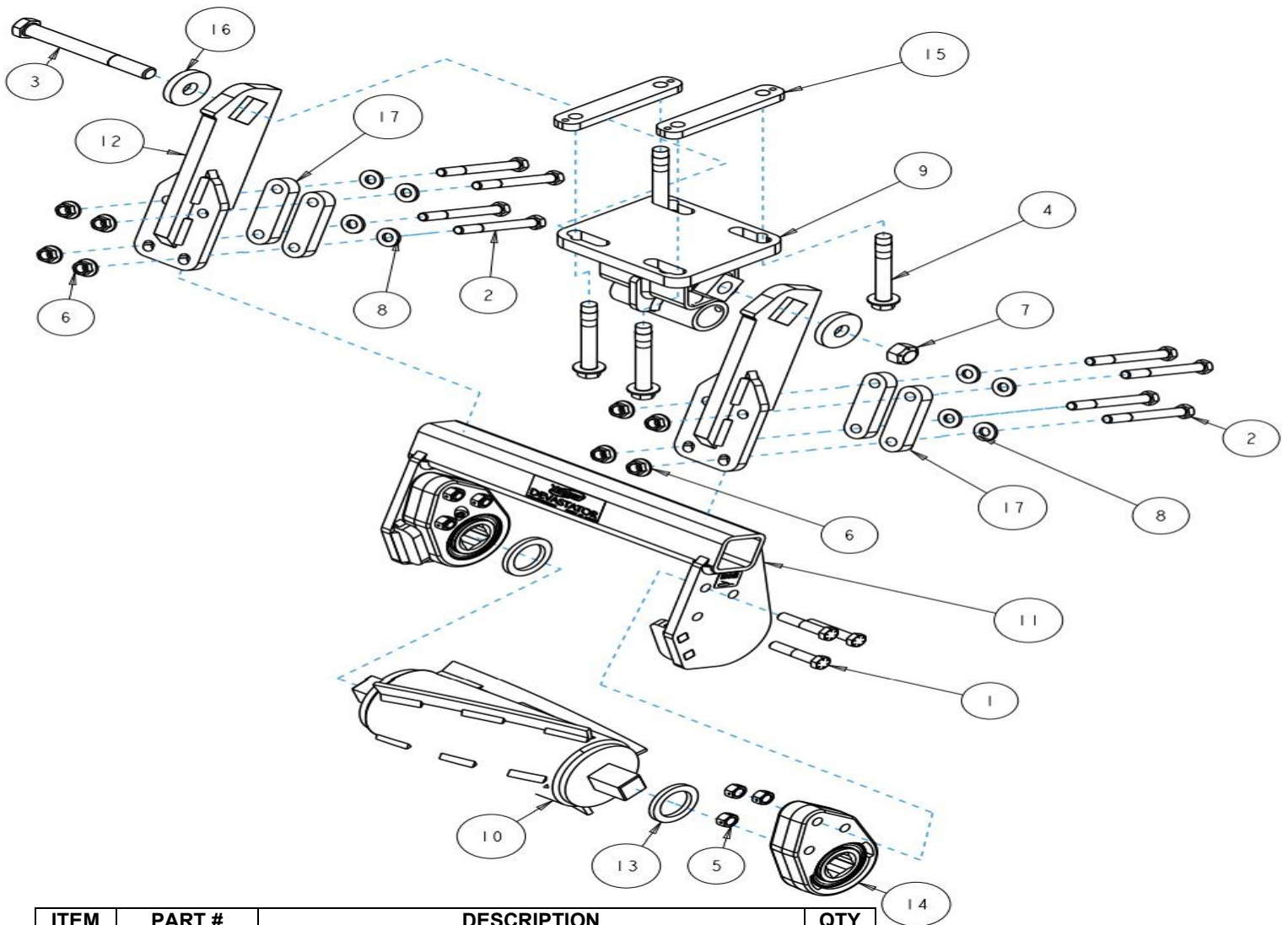
- Head cart may need adjusted to fit the head with devastator correctly. E.g., raising the saddles & top rail on the head cart.
- When disconnecting from the head, leaving pressure on the torsion pivot of the devastator will not damage the devastator.

## BEARING REPLACEMENT/MAINTENANCE

Put the bearing housing in a vice, use a pry bar to turn the bearing in the housing parallel with the slots, remove the old bearing, insert the new bearing in the slots, use a pry bar to move back to position, & grease until a small amount comes out between outer race & cast housing. Wobble the bearing around to help work the lubricant into the outer race of the bearing.



# 5000-090C PART IDENTIFICATION



ITEM	PART #	DESCRIPTION	QTY
1	2502-353	1/2-13 X 2 1/2 HHCS GR 8 ZP	6
2	2502-361	1/2-13 X 4 1/2 HHCS GR 8 ZP	8
3	2502-430	3/4 - 10 X 8 HHCS GR 8 ZP	1
4	2502-805	M16 X 2 X 120 HEX FLANGE BOLT W/ THRD LOCK ZP	4
	2502-806	M16 X 2 X 110 HEX FLANGE BOLT W THRD LOCK ZP	4
5	2520-358	1/2-13 REVERSIBLE LOCK HEX NUT GR C ZP	6
6	2520-368	1/2-13 HEX FLANGE NUT PREVAIL TORQUE GR C ZP	8
7	2520-604	3/4 - 10 HEX TOP LOCK NUT	1
8	2526-355	1/2 FLAT WASHER HARDENED ZP	8
9	5000-147	TORSION PIVOT ASSEMBLY	1
10	5000-2001	1 ROW ROLLER	1
11	5000-2002A	1 ROW ROLLER MOUNT	1
12	5000-2012	TORSION ARM W.A.	2
13	5000-322	SHIM WASHER	2
14	5000-355	BEARING ASSEMBLY	2
	2550-059	DEVASTATOR BEARING (NO CAST HOUSING)	2
	2533-110	1/4-28 STRAIGHT GREASE ZERK, SELF TAP	2
15	5000-420	4" CLAMP STRAP	2
16	5000-469	SECURITY CAP	2
17	5000-515	CLAMP PLATE	4



# TROUBLESHOOTING

ISSUE	CAUSE	CORRECTIVE ACTION
Residue Plugging or wrapping	<ol style="list-style-type: none"> <li>1. Incorrect Head Angle</li> <li>2. Roller Mount Tube incorrectly installed</li> <li>3. Pivot arm orientation incorrect</li> <li>4. Bearing installed incorrectly</li> <li>5. Devastator bottomed out</li> <li>6. Chopping knives are dull</li> </ol>	<ol style="list-style-type: none"> <li>1. Adjust head angle to 22 – 25 degrees (see <b>page 7</b>)</li> <li>2. Make sure the Bearing Support Tab is on the backside of the Roller Arm Mount Tube</li> <li>3. Reposition the pivot arm so that it offsets under the snout &amp; not directly under the row</li> <li>4. Make sure the side of the bearing that protrudes outside of the cast housing is facing away from the bearing plate. (each roller should spin freely by hand)</li> <li>5. Raise head to allow travel, make sure angle is correct</li> <li>6. Flip/replace chopping blades, or turn them off</li> </ol>
Stalk aren't "devastated"	<ol style="list-style-type: none"> <li>1. Operating corn head too high</li> <li>2. Traction Bar isn't over row</li> </ol>	<ol style="list-style-type: none"> <li>1. Lower head until the rollers engage, if roller is engaged, lowering head will apply more pressure to rollers</li> <li>2. Add 5000-472 Traction Bar extensions Reposition Mount brackets/pivot arms to have more side to side adjustment</li> </ol>
Corn Head won't fit on head cart	<ol style="list-style-type: none"> <li>1. Devastators bottom out</li> <li>2. Roller won't clear cart tire</li> <li>3. Storage stands don't rest in the saddles on the cart</li> </ol>	<ol style="list-style-type: none"> <li>1. Adjust top rail &amp; saddles higher on cart</li> <li>2. Use side tilt to clear tires (if using a dual rear axle cart) Pin Devastators Up</li> <li>3. Order 5000-081 Head Extensions (JD 600 &amp; 700 series only)</li> </ol>
Bearing makes a clunking sound when barrel spins	<ol style="list-style-type: none"> <li>1. Slop in square shaft on the end of roller &amp; the bearing allows the roller to drop</li> </ol>	<ol style="list-style-type: none"> <li>1. This is normal, no corrective action needed</li> </ol>



# **NOTES**



A Tradition of Solutions since 1930

Yetter Farm Equipment Co

PO BOX 358 109 S. McDonough

Colchester, IL 62326-0358

Phone: 309-776-4111

Toll Free: 800-447-5777

Email: [info@yetterco.com](mailto:info@yetterco.com)

For updated models and manuals visit the Yetter website:

[www.yetterco.com](http://www.yetterco.com)

© Yetter Farm Equipment Co. All Rights Reserved

2565-972-Rev-C – 07/2025