



5000 SERIES STALK DEVASTATOR DRAGO GT MODEL CORN HEADS

OWNER'S MANUAL
PART IDENTIFICATION

2565-969 06/2019



YETTER MANUFACTURING CO.

Founded 1930

Colchester, IL 62326

Toll free: (800)447-5777.

Fax: (309)776-3222

Website: yetterco.com

E-mail: info@yetterco.com

YETTER

TABLE OF CONTENTS

FOREWARD.....	2
WARRANTY.....	2
SAFETY INFORMATION.....	3 – 5
TORQUE.....	6
BILL OF MATERIALS & TOOLS NEEDED.....	7
ASSEMBLY INSTRUCTIONS.....	8 – 14
LOCK UP / OPERATION.....	15
PART IDENTIFICATION.....	16 – 22

FOREWORD

You've just joined an exclusive but rapidly growing club.

For our part, we want to welcome you to the group and thank you for buying a Yetter product.

We hope your new Yetter products will help you achieve both goals-increase your productivity and increase your efficiency so that you may generate more profit.

This operator's manual has been designed into 4 major sections: Foreword, Safety Precautions, Installation Instructions and Parts Breakdown.



This **SAFETY ALERT SYMBOL** indicates important safety messages in the manual. When you see this symbol, be alert to the possibility of **PERSONAL INJURY** & carefully read the message that follows.

The word **NOTE** is used to convey information that is out of context with the manual text. It contains special information such as specifications, techniques and reference information of a supplementary nature.

The word **IMPORTANT** is used in the text when immediate damage will occur to the machine due to improper technique or operation.

It is the responsibility of the user to read the operator's manual and comply with the safe and correct operating procedure and to lubricate and maintain the product according to the maintenance schedule in the operator's manual.

The user is responsible for inspecting his machine and for having parts repaired or replaced when continued use of the product would cause damage or excessive wear to the other parts.

It is the user's responsibility to deliver his machine to the Yetter dealer who sold him the product for service or replacement of defective parts, which are covered by the warranty policy.

If you are unable to understand or follow the instructions provided in this publication, consult your local Yetter dealer or contact:

YETTER MANUFACTURING CO.

309/776-4111

800/447-5777

309/776-3222 (FAX)

Website: www.yetterco.com

E-mail: info@yetterco.com

WARRANTY

Yetter Manufacturing warrants all products manufactured and sold by it against defects in material. This warranty being expressly limited to replacement at the factory of such parts or products as shall appear to be defective after inspection. This warranty does not obligate the Company to bear cost of labor in replacement of parts. It is the policy of the Company to make improvements without incurring obligations to add them to any unit already sold. No warranty is made or authorized to be made, other than herein set forth. This warranty is in effect for one year after purchase.

DEALER: _____

Yetter Manufacturing warrants its own products only and cannot be responsible for damages to equipment on which mounted.

BE ALERT!

YOUR SAFETY IS INVOLVED



WATCH FOR THIS SYMBOL. IT POINTS OUT IMPORTANT SAFETY PRECAUTIONS. IT MEANS “ATTENTION – BE ALERT!”

It is your responsibility as an owner, operator, or supervision to know and instruct everyone using this machine at the time of initial assignment and at least annually thereafter, of the proper operation, precautions, and work hazards which exist in the operation of the machine in accordance with OSHA regulations.

Safety Is No Accident

The following safety instructions, combined with common sense, will save your equipment from needless damage and the operator from unnecessary exposure to personal hazard. Pay special attention to the caution notes in the text. Review this manual at least once a year with all operators.



1. Read and understand the operator's manual before operating this machine. Failure to do so is considered a misuse of the equipment.
2. Make sure equipment is secure before operating.
3. Always keep children away from equipment when operating.
4. Make sure everyone that is not directly involved with the operation is out of the work area before beginning operation.
5. Make sure all safety devices, shields, and guards are in place and functional before beginning operation
6. Shut off all power to adjust, service, or clean.
7. Keep hands, feet, and clothing away from moving parts. It is a good idea to remove all jewelry before operating.
8. Inspect the machine periodically during operation for signs of excessive wear, loose fasteners, and unusual noises.

PLEASE READ, VERY IMPORTANT



SECURE CORN HEADER AGAINST UNWANTED LOWERING BY APPLYING THE LOCKING MECHANISM ON THE HYDRAULIC CYLINDERS!



1. Attach head to combine, lock head to combine
2. Raise the head off the ground and engage safety stop on the feeder house cylinder.
3. Turn off combine engine and remove the key

FOLLOW ALL INSTRUCTIONS GIVEN BY THE COMBINE MANUFACTURER

PLEASE READ, VERY IMPORTANT



Subject to the size and weight of the corn header, one or two additional hydraulic cylinders may be required.

The combine manufacturer generally keeps corresponding kits readily available for dealers.

Subject to the design of the corn header and the carrying capacity of different combines, the steering axle may require the fitting of additional weights and the rear tires be filled with ballast.

**FOLLOW ALL INSTRUCTIONS GIVEN BY THE COMBINE
MANUFACTURER**

BOLT TORQUE

Important: Over-tightening hardware can cause just as much damage as under-tightening. Tightening hardware beyond the recommended range can reduce its shock load capacity.

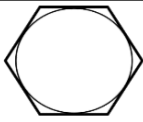



All hardware on the 5000 Devastator is either Grade 5 or Grade 8, unless otherwise noted. Grade 5 cap screws are marked with three radial lines on the head. Grade 8 cap screws are marked with six radial lines on the head. If hardware must be replaced, be sure to replace it with hardware of equal size, strength and thread type. Refer to the torque values chart when tightening hardware.

The chart below is a guide for proper torque. Use it unless a specified torque is called out elsewhere in the manual.

Torque is the force applied to the end of the handle or cheater bar, times the length of the handle or bar.

Use a torque wrench wherever possible

The following table shows torque in ft.-lbs. for coarse thread hardware.

Bolt Diameter and Threads per Inch	 Grade 2	 Grade 5	 A-325	 Grade 8
1/4	6		10	14
5/16	12		20	30
3/8 – 16	25		35	50
7/16 – 14	35		55	80
1/2 – 13	55		85	125
9/16 – 12	75		125	175
5/8 – 11	105		170	235
3/4-10	185		305	425
7/8 – 9	170		445	690
1-8	260		670	1030
1 1/8 – 7	365		900	1460
1 1/4 - 7	515		1275	2060
1 3/8 – 6	675		1675	2700
1 1/2 - 6	900		2150	3500
1 3/4 – 5	1410		3500	5600

BILL OF MATERIALS PER KIT

5000-050A – 6R30 Drago GT – 2) 5000-160 Roller Bearing Bolt Bag, 4) 5000-169 Torsion Pivot Assembly, 4) 5000-170 Torsion Mount Bolt Bag, 2) 5000-272 3R30 Roller W.A., 2) 5000-275 4R20/3R30 Roller Mount W.A., 2) 5000-277 Torsion Mount W.A., 1) 5000-278 Drago GT Center Pivot W.A., 4) 5000-292 Torsion Arm W.A., 1) 5000-440 Center Backing Plate, 1) 5000-441 Short/Double Backing Plate, 1) 5000-172 Manual Bag

5000-051A – 8R30 Drago GT – 3) 5000-160 Roller Bearing Bolt Bag, 6) 5000-169 Torsion Pivot Assembly, 6) 5000-170 Torsion Mount Bolt Bag, 1) 5000-268 2R30 Roller W.A., 1) 5000-269 2R30 Roller Mount W.A., 2) 5000-272 3R30 Roller W.A., 2) 5000-275 4R20/3R30 Roller Mount W.A., 4) 5000-277 Torsion Mount W.A., 1) 5000-278 Drago GT Center Pivot W.A., 6) 5000-292 Torsion Arm W.A., 1) 5000-440 Center Backing Plate, 1) 5000-441 Short/Double Backing Plate, 1) 5000-172 Manual Bag

5000-052A – 12R30 Drago GT – 4) 5000-160 Roller Bearing Bolt Bag, 8) 5000-169 Torsion Pivot Assembly, 8) 5000-170 Torsion Mount Bolt Bag, 4) 5000-272 3R30 Roller W.A., 4) 5000-275 4R20/3R30 Roller Mount W.A., 6) 5000-277 Torsion Mount W.A., 1) 5000-278 Drago GT Center Pivot W.A., 8) 5000-292 Torsion Arm W.A., 1) 5000-440 Center Backing Plate, 1) 5000-441 Short/Double Backing Plate, 1) 5000-172 Manual Bag

Before beginning your installation, go through your kit to verify that you have the correct parts and quantities. Use the Pictorial Index below & Part ID section at the end of the manual as a visual of what the parts look like.

INSTALLATION TOOLS REQUIRED:

Electric or Pneumatic Impact,
Torque wrench,
1 1/8 socket & wrench,
15/16 socket & wrench,
3/4 Socket & 9/16 socket



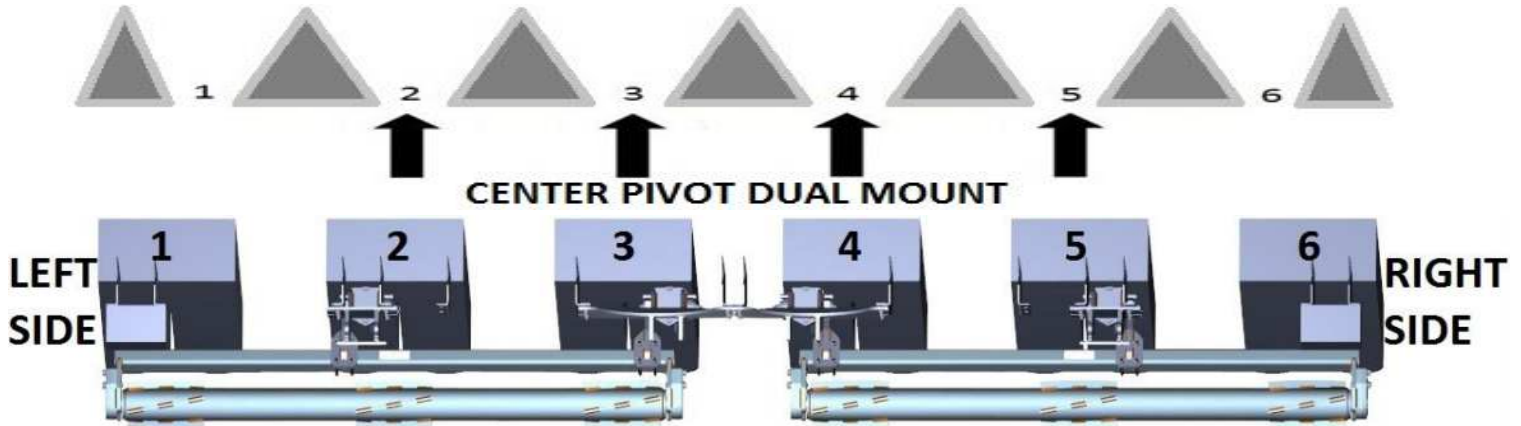
PICTORIAL INDEX OF PARTS

 5000-169 Torsion Pivot	 5000-268 2R30 Roller	 5000-269 2R30 Roller Mount	 5000-272 3R30 Roller	 5000-275 4R20/3R30 Roller Mount	 5000-277 Torsion Mount	
 5000-278 Drago GT Center Pivot	 5000-292 Torsion Arm	 5000-355 Bearing Assembly	 5000-421 Roller Spacer Bushing	 5000-438 Backing Plate	 5000-439 Short Backing Plate	 5000-440 Center Backing Plate
 5000-441 Short/Double Mount Plate	 5000-468 Spacer	 5000-469 Security Cap				

ASSEMBLY INSTRUCTIONS

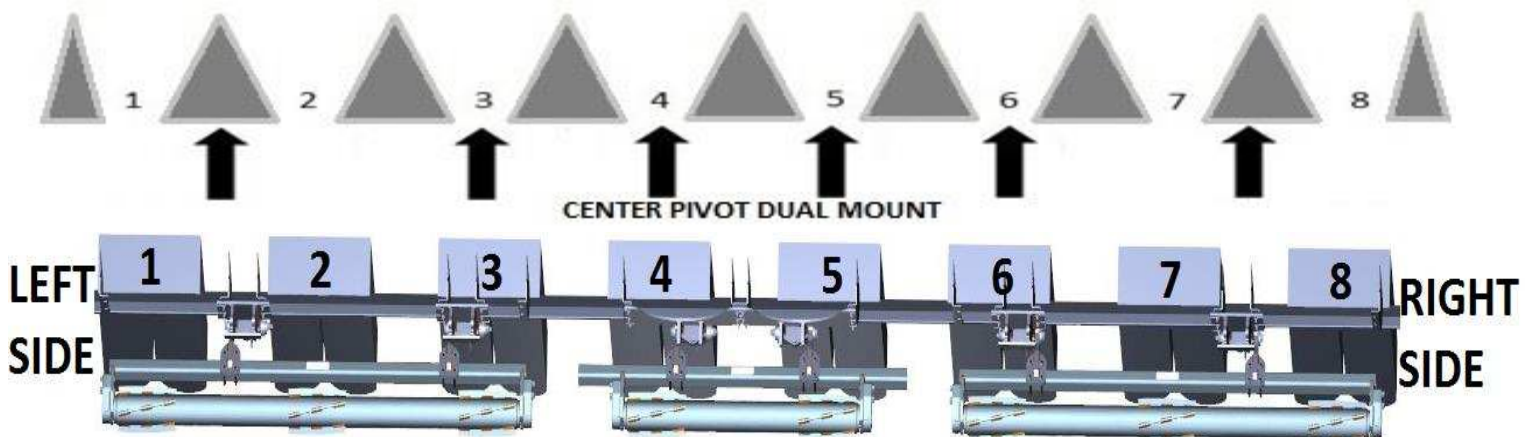
5000-050A 6 ROW 30"

Arrows indicate 5000-277 & 5000-278 mount bracket & 5000-169 torsion pivot locations



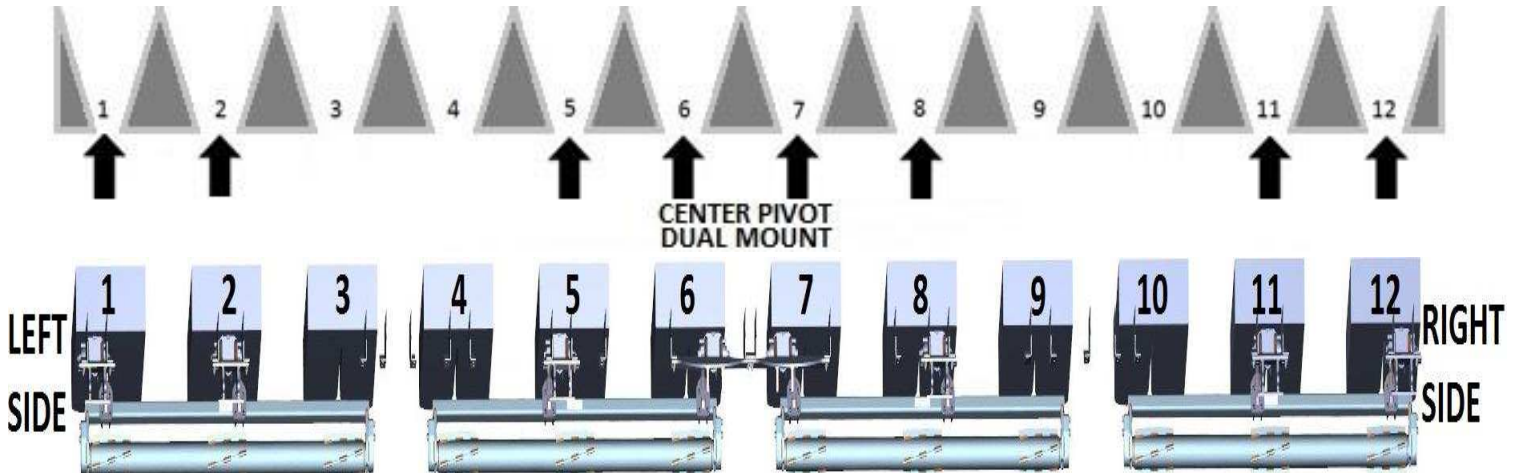
5000-051A 8 ROW 30"

Arrows indicate 5000-277 & 5000-278 mount bracket & 5000-169 torsion pivot locations



5000-052A 12 ROW 30"

Arrows indicate 5000-277 & 5000-278 mount bracket & 5000-169 torsion pivot locations



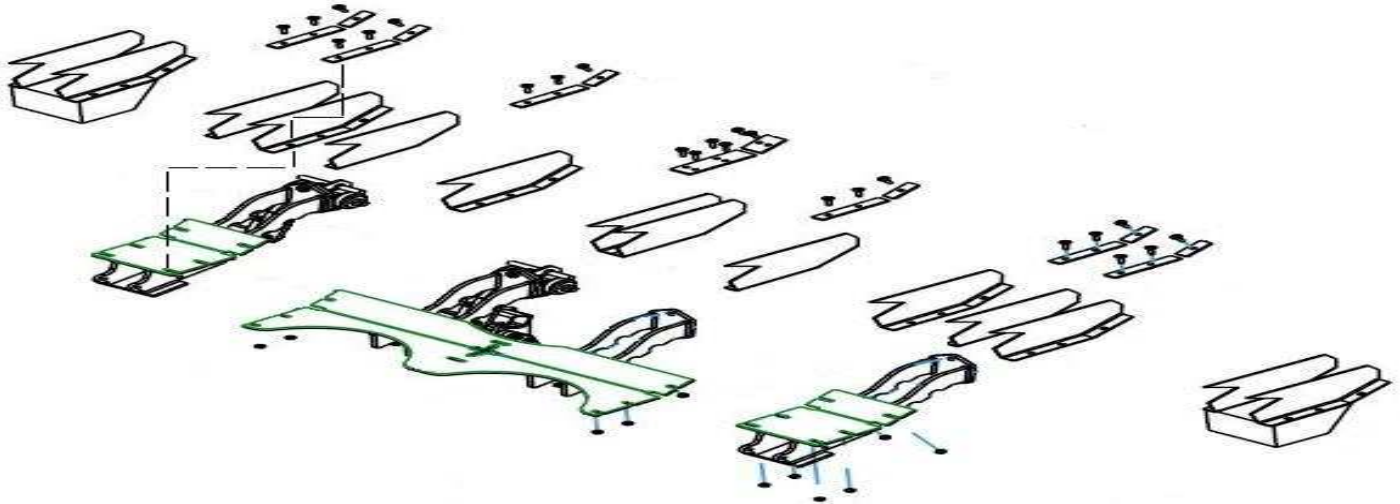
ASSEMBLY INSTRUCTIONS

Step 1: Install the 5000-277 Torsion Mount and the 5000-5000-278 Center Pivot. The Torsion Mounts will each use 2) 5000-438 Backing Plates and 2) 5000-439 Short Backing Plates. The Center Pivot will use 2) Backing Plates and 2) Short Backing Plates on the outer edges & 1) 5000-440 Center Backing Plate & 1) 5000-441 Short/Double Backing Plate on the center of the mount. Fasten the Torsion Mount and Center Pivot assemblies to the Backing Plates using 3/8 X 1 1/2" carriage bolts & 3/8 hex flange lock nuts.

6 Row Head – 5000-277 under row 2 & row 5, center pivot under rows 3 & 4. (model provided below)

8 Row Head – 5000-277 between rows 1 & 2 and 7 & 8, under rows 3 & 6, center pivot under rows 4 & 5.

12 Row Head – 5000-277 under rows 1, 2, 5, 8, 11, & 12, center pivot under rows 6 & 7.

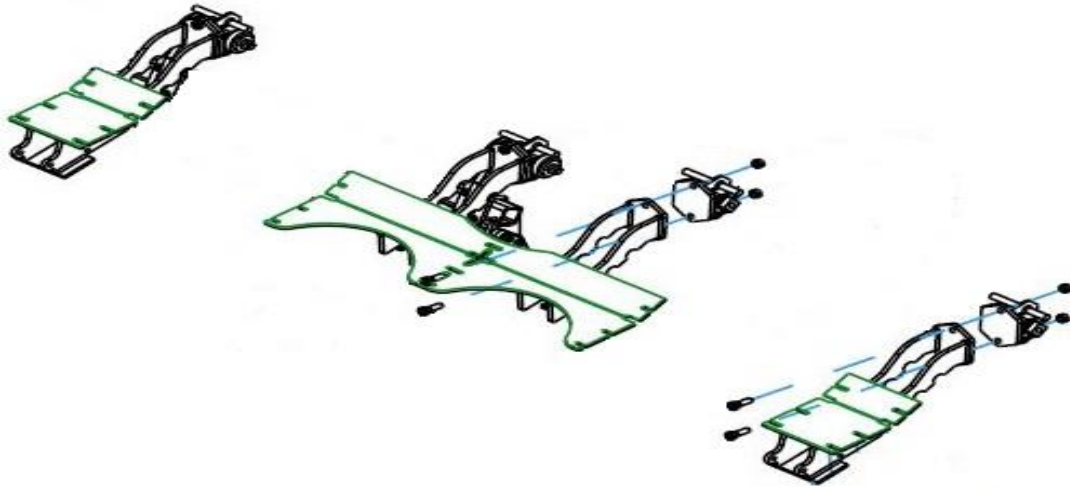


NOTE: Removing the original resting pads may be required.

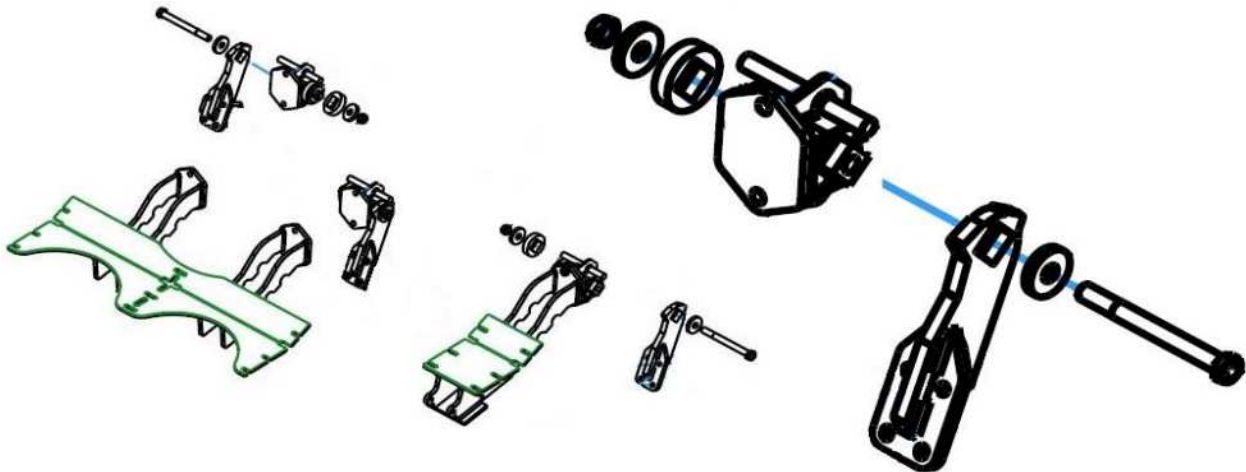


ASSEMBLY INSTRUCTIONS

Step 2: Attach the 5000-169 torsion pivot assembly to the torsion mount and center pivot using 5/8 X 2 bolts and 5/8 lock hex nuts.

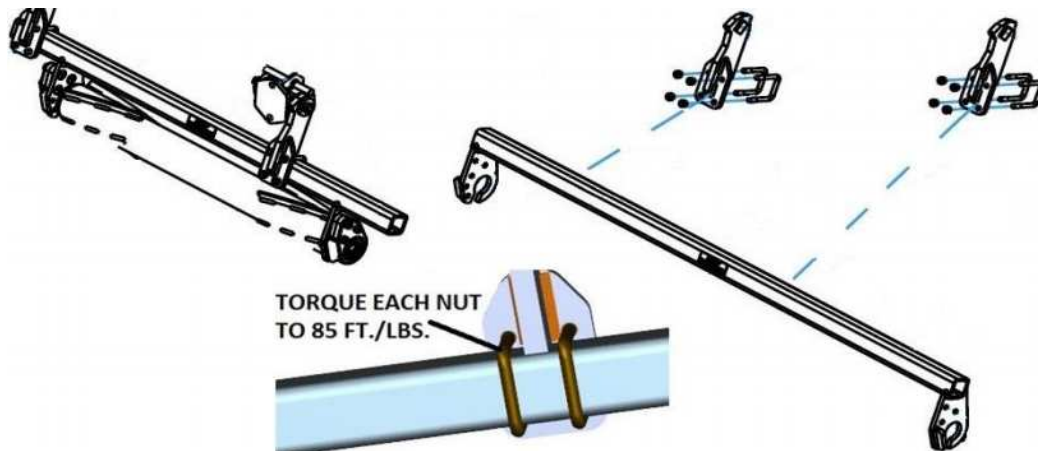


Step 3: Attach the 5000-292 torsion arm to the torsion pivot assemblies. Place 1) 5000-469 security cap over the 2502-322 3/4 X 8 bolt, slide bolt with cap through the torsion arm and torsion pivot, slide the 5000-468 spacer over bolt followed by another security cap, and then fasten the 2520-604 3/4 top lock nut.



Step 4: Install the roller mounts, 5000-269 2R30 (8 ROW ONLY) & 5000-275 3R30/4R20, to the torsion arm using 2570-568 1/2 X 2 1/2 X 3 1/2 U-bolts & 2520-357 1/2 lock hex nuts. Do not tighten this hardware down until after each roller is mounted so the traction bars can be aligned directly under each row.

NOTE: MAKE SURE THE BEARING SUPPORT TAB ON THE ROLLER MOUNT IS ON THE BACK SIDE.



ASSEMBLY INSTRUCTIONS

Step 5: Place each roller, 5000-268 2R30 (8 ROW ONLY) & 5000-272 3R30, into the circular cut out on the roller mount & turn the roller to keep the roller from dropping. Place the 5000-468 spacer over the square shaft on the roller. Place the 5000-355 bearing over the shaft so that the side of the bearing that sticks out beyond the housing faces away from the roller. Mount each bearing to the roller mount using 3) ½" X 2 ½" carriage bolts & 3) ½ lock nuts. When each bearing is fastened into place, spin the roller to ensure correct installation. Roller should spin freely.

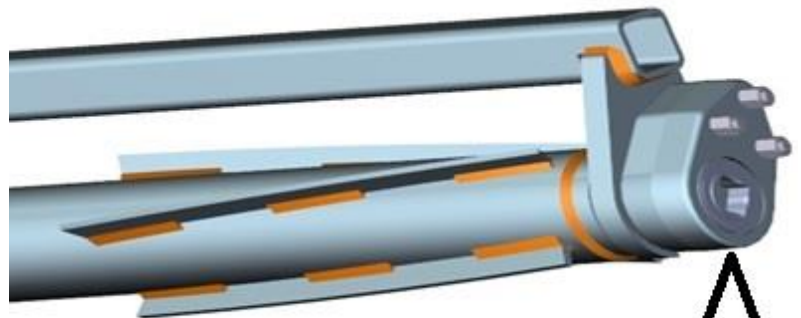
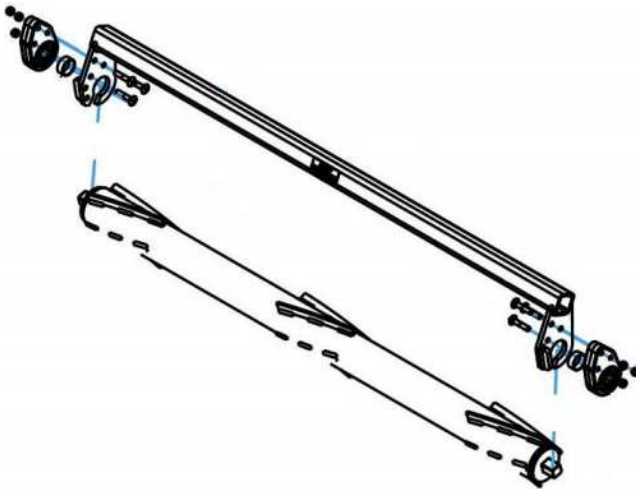
IMPORTANT: The spacer must be installed between the roller & the bearing. The notches of the bearing housing must face the mounting plate. The extended race on the bearing will face away from the roller.



SLIDE ROLLER SHAFT UP THROUGH
OPENING & ROTATE ROLLER 1/8 TURN TO
KEEP ROLLER ELEVATED FOR BEARING INSTALLATION

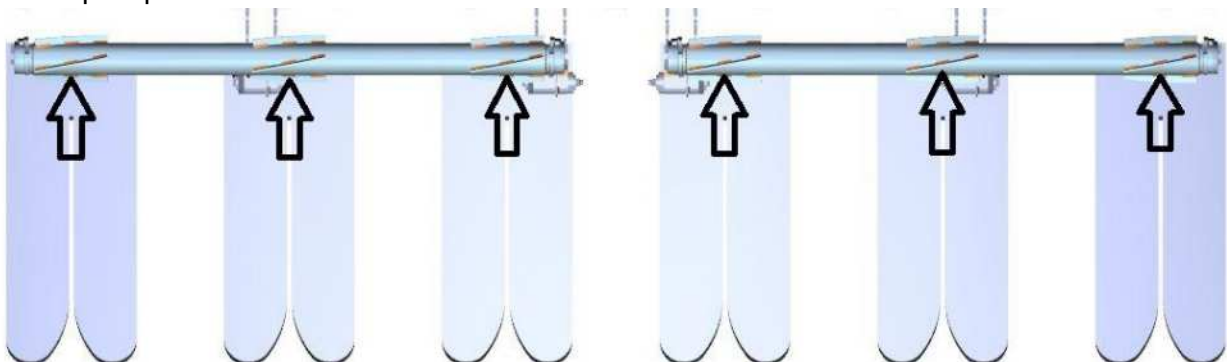


SPACER
BUSHING



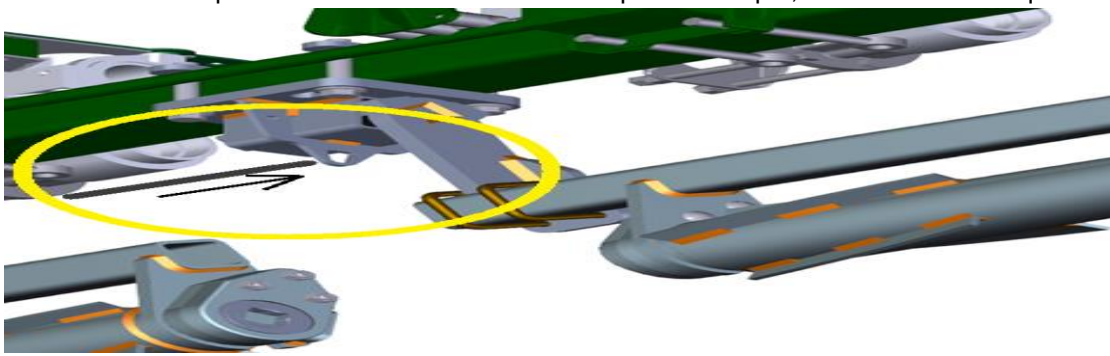
SLIDE THE BEARING OVER THE ROLLER
SHAFT MAKING SURE THE RACE OF THE
BEARING PROTRUDING OUTSIDE OF
THE HOUSING FACES AWAY FROM THE
ROLLER.

Step 6: Slide the roller mount tubes to align the row center with the traction bars. Fully tighten all hardware at this time to torque spec.



LOCK UP

To “lock up” the Devastator roller, install a rod through the hole in the mount bracket, in front of the pivot arms. A 5000-430 Lock Pin can be ordered to lock up the devastators. 6 row heads require 1 lock pin, 8/12 row heads require 2.



OPERATION

CORN HEAD ANGLE NEEDS TO BE ADJUSTED BETWEEN 23 – 25° FOR OPTIMUM DEVASTATOR PERFORMANCE.

USE THE 5000-455 TO CHECK CORN HEAD ANGLE:

- Put the combine on a level surface. Lower the Corn head to your normal working head height.
- Place the magnetic protractor on the stripper plate to get the angle. Adjust the feeder house as needed, fore or aft, to achieve 23 – 25 degrees.



STORAGE/TRANSPORT

- Head cart may need adjusted to fit the head with devastator correctly. E.g., raising the saddles & top rail on the head cart.
- When disconnecting from the head, leaving pressure on the torsion pivot of the devastator will not damage the devastator.

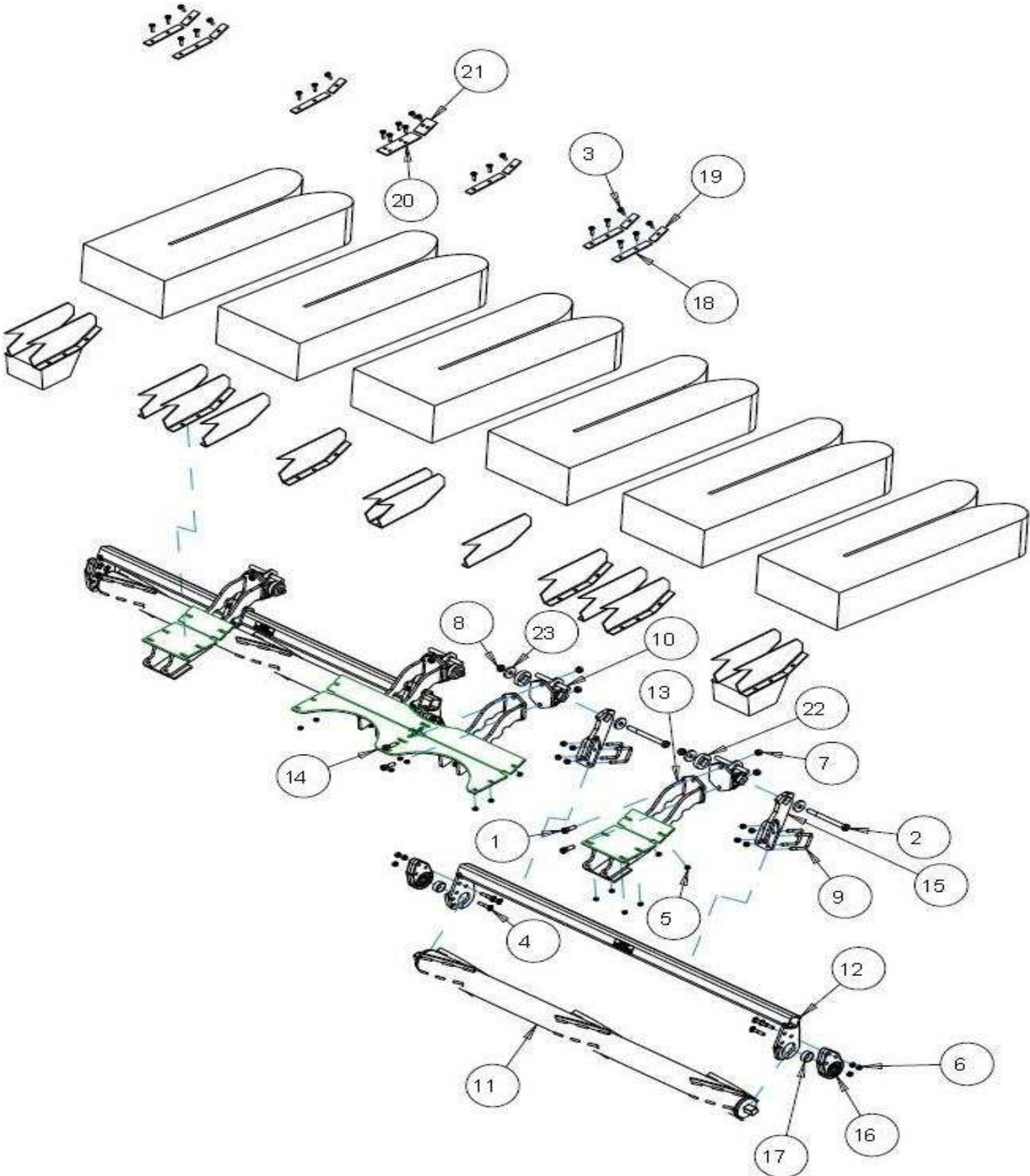
BEARING REPLACEMENT

Put the bearing housing in a vice, use a pry bar to turn the bearing in the housing parallel with the slots, remove the old bearing, apply anti-seize lubricant to the interior of the bearing housing, insert the new bearing in the slots, & use a pry bar to move back to position. Wobble the bearing around to help work the lubricant into the outer race of the bearing.



5000-050A PART IDENTIFICATIONS

DRAGO GT 6 ROW



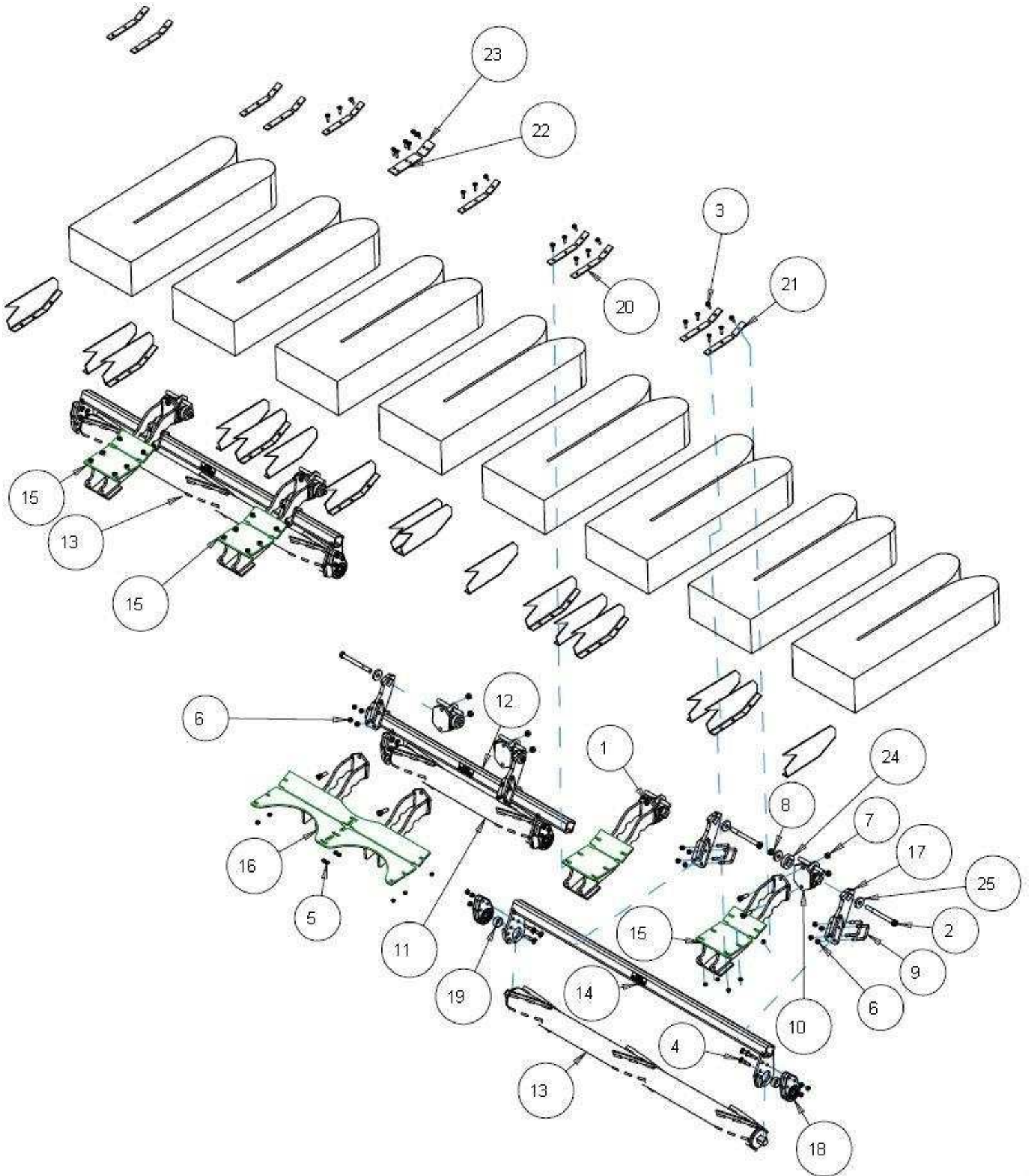
5000-050A PART IDENTIFICATIONS

DRAGO GT 6 ROW

ITEM	PART #	DESCRIPTION	QUANTITY
1	2502-322	5/8 – 11 X 2 HHCS GR 8	8
2	2502-430	¾ - 10 X 8 HHCS GR 8 ZP	4
3	2505-262	3/8 – 16 X 1 ½ CARRIAGE BOLT GR 5 ZP	24
4	2505-343	½ - 13 X 2 ½ CARRIAGE BOLT, GR 5, ZP	12
5	2520-258	3/8 – 16 HEX FLANGE LOCK NUT ZP	24
6	2520-357	1/2-13 LOCK HEX NUT, GR A, ZP	28
7	2520-459	5/8 – 11 LOCK HEX NUT GR B ZP	8
8	2520-604	¾ - 10 HEX TOP LOCK NUT	4
9	2570-568	½ X 2 ½ X 3 ½ U-BOLT	8
10	5000-169	TORSION PIVOT ASSEMBLY	4
11	5000-272	3R30 ROLLER W.A.	2
12	5000-275	4R20/3R30 ROLLER MOUNT W.A.	2
13	5000-277	TORSION MOUNT W.A.	2
14	5000-278	DRAGO GT CENTER PIVOT W.A.	1
15	5000-292	TORSION ARM W.A.	4
16	5000-355	BEARING ASSEMBLY	4
	2550-059	DEVASTATOR BEARING (NO CAST HOUSING)	4
17	5000-421	ROLLER SPACER BUSHING	4
18	5000-438	BACKING PLATE	6
19	5000-439	SHORT BACKING PLATE	6
20	5000-440	CENTER BACKING PLATE	1
21	5000-441	SHORT/DOUBLE BACKING PLATE	1
22	5000-468	SPACER	4
23	5000-469	SECURITY CAP	8

5000-051A PART IDENTIFICATIONS

DRAGO GT 8 ROW



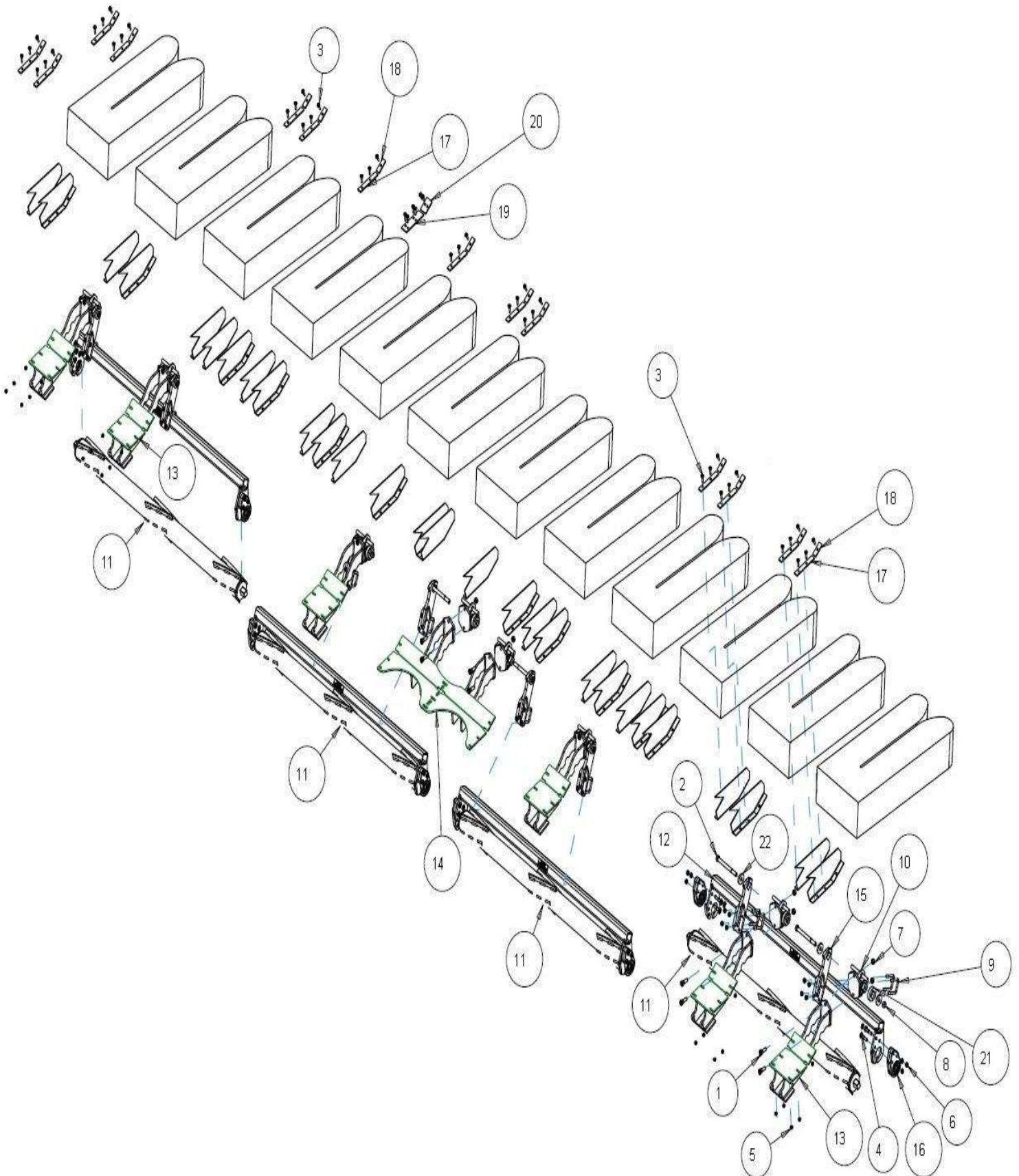
5000-051A PART IDENTIFICATIONS

DRAGO GT 8 ROW

ITEM	PART #	DESCRIPTION	QUANTITY
1	2502-322	5/8 – 11 X 2 HHCS GR 8	12
2	2502-430	¾ - 10 X 8 HHCS GR 8 ZP	6
3	2505-262	3/8 – 16 X 1 ½ CARRIAGE BOLT GR 5 ZP	36
4	2505-343	½ - 13 X 2 ½ CARRIAGE BOLT, GR 5, ZP	18
5	2520-258	3/8 – 16 HEX FLANGE LOCK NUT ZP	36
6	2520-357	1/2-13 LOCK HEX NUT, GR A, ZP	42
7	2520-462	5/8 – 11 LOCK HEX NUT GR 8 ZP	12
8	2520-604	¾ - 10 HEX TOP LOCK NUT	6
9	2570-568	½ X 2 ½ X 3 ½ U-BOLT	12
10	5000-169	TORSION PIVOT ASSEMBLY	6
11	5000-268	2R30 ROLLER W.A.	1
12	5000-269	2R30 ROLLER MOUNT W.A.	1
13	5000-272	3R30 ROLLER W.A.	2
14	5000-275	4R20/3R30 ROLLER MOUNT W.A.	2
15	5000-277	TORSION MOUNT W.A.	4
16	5000-278	DRAGO GT CENTER PIVOT W.A.	1
17	5000-292	TORSION ARM W.A.	6
18	5000-355	BEARING ASSEMBLY	6
	2550-059	DEVASTATOR BEARING (NO CAST HOUSING)	6
19	5000-421	ROLLER SPACER BUSHING	6
20	5000-438	BACKING PLATE	10
21	5000-439	SHORT BACKING PLATE	10
22	5000-440	CENTER BACKING PLATE	1
23	5000-441	SHORT/DOUBLE BACKING PLATE	1
24	5000-468	SPACER	6
25	5000-469	SECURITY CAP	12

5000-052A PART IDENTIFICATION

DRAGO GT 12 ROW



5000-050A PART IDENTIFICATIONS

DRAGO GT 12 ROW

ITEM	PART #	DESCRIPTION	QUANTITY
1	2502-322	5/8 – 11 X 2 HHCS GR 8	8
2	2502-430	¾ - 10 X 8 HHCS GR 8 ZP	4
3	2505-262	3/8 – 16 X 1 ½ CARRIAGE BOLT GR 5 ZP	24
4	2505-343	½ - 13 X 2 ½ CARRIAGE BOLT, GR 5, ZP	12
5	2520-258	3/8 – 16 HEX FLANGE LOCK NUT ZP	24
6	2520-357	1/2-13 LOCK HEX NUT, GR A, ZP	28
7	2520-459	5/8 – 11 LOCK HEX NUT GR B ZP	8
8	2520-604	¾ - 10 HEX TOP LOCK NUT	4
9	2570-568	½ X 2 ½ X 3 ½ U-BOLT	8
10	5000-169	TORSION PIVOT ASSEMBLY	4
11	5000-272	3R30 ROLLER W.A.	2
12	5000-275	4R20/3R30 ROLLER MOUNT W.A.	2
13	5000-277	TORSION MOUNT W.A.	2
14	5000-278	DRAGO GT CENTER PIVOT W.A.	1
15	5000-292	TORSION ARM W.A.	4
16	5000-355	BEARING ASSEMBLY	4
	2550-059	DEVASTATOR BEARING (NO CAST HOUSING)	4
17	5000-421	ROLLER SPACER BUSHING	4
18	5000-438	BACKING PLATE	6
19	5000-439	SHORT BACKING PLATE	6
20	5000-440	CENTER BACKING PLATE	1
21	5000-441	SHORT/DOUBLE BACKING PLATE	1
22	5000-468	SPACER	4
23	5000-469	SECURITY CAP	8





A Tradition of Solutions since 1930

Yetter Farm Equipment Co

PO BOX 358 109 S. McDonough

Colchester, IL 62326-0358

Phone: 309-776-4111

Toll Free: 800-447-5777

Email: info@yetterco.com

For updated models and manuals visit the Yetter website:

www.yetterco.com

© Yetter Farm Equipment Co. All Rights Reserved

2565-969 – 06/2019