



**5000 SERIES
STALK
DEVASTATOR
CORN STALK ROLLER
PATENTED
5000-023A & 5000-024A
5000-035
OPERATOR'S MANUAL
PART IDENTIFICATION
2565-784_REV_B – 12/2018**



YETTER MANUFACTURING CO.
FOUNDED 1930

Colchester, IL 62326-0358
Toll free: 800/447-5777
309/776-3222 (Fax)
Website: www.yetterco.com
E-mail: info@yetterco.com

YETTER

FOREWORD

You've just joined an exclusive but rapidly growing club.

For our part, we want to welcome you to the group and thank you for buying a Yetter product.

We hope your new Yetter products will help you achieve both goals-increase your productivity and increase your efficiency so that you may generate more profit.

This operator's manual has been designed into four major sections: Foreword, Safety Precautions, Installation Instructions and Parts Breakdown.



This **SAFETY ALERT SYMBOL** indicates important safety messages in the manual. When you see this symbol, be alert to the possibility of **PERSONAL INJURY** and carefully read the message that follows.

The word **NOTE** is used to convey information that is out of context with the manual text. It contains special information such as specifications, techniques and reference information of a supplementary nature.

The word **IMPORTANT** is used in the text when immediate damage will occur to the machine due

to improper technique or operation. Important will apply to the same information as specified by note only of an immediate and urgent nature.

It is the responsibility of the user to read the operator's manual and comply with the safe and correct operating procedure and to lubricate and maintain the product according to the maintenance schedule in the operator's manual.

The user is responsible for inspecting his machine and for having parts repaired or replaced when continued use of the product would cause damage or excessive wear to the other parts.

It is the user's responsibility to deliver his machine to the Yetter dealer who sold him the product for service or replacement of defective parts, which are covered by the warranty policy.

If you are unable to understand or follow the instructions provided in this publication, consult your local Yetter dealer or contact:

YETTER MANUFACTURING CO.

309/776-4111

800/447-5777

309/776-3222 (FAX)

Website: www.yetterco.com

E-mail: info@yetterco.com

WARRANTY

Yetter Manufacturing warrants all products manufactured and sold by it against defects in material. This warranty being expressly limited to replacement at the factory of such parts or products as shall appear to be defective after inspection. This warranty does not obligate the Company to bear cost of labor in replacement of parts. It is the policy of the Company to make improvements without incurring obligations to add them to any unit already sold. No warranty is made or authorized to be made, other than herein set forth. This warranty is in effect for one year after purchase.

DEALER: _____

Yetter Manufacturing warrants its own products only and cannot be responsible for damages to equipment on which mounted.



BE ALERT! YOUR SAFETY IS INVOLVED.



WATCH FOR THIS SYMBOL. IT POINTS OUT IMPORTANT SAFETY PRECAUTIONS. IT MEANS “ATTENTION---BECOME ALERT!”

It is your responsibility as an owner, operator, or supervisor to know and instruct everyone using this machine at the time of initial assignment and at least annually thereafter, of the proper operation, precautions, and work hazards which exist in the operation of the machine in accordance with OSHA regulations.

Safety Is No Accident

The following safety instructions, combined with common sense, will save your equipment from needless damage and the operator from unnecessary exposure to personal hazard. Pay special attention to the caution notes in the text. Review this manual at least once each year with new and/or experienced operators.



1. Read and understand the operator's manual before operating this machine. Failure to do so is considered a misuse of the equipment.
2. Make sure equipment is secure before operating.
3. Always keep children away from equipment when operating.
4. Make sure everyone that is not directly involved with the operation is out of the work area before beginning the operation.
5. Make sure all safety devices, shields, and guards are in place and are functional before beginning the operation.
6. Shut off power to adjust, service, or clean.
7. Keep hands, feet, and clothing away from moving parts. It is a good idea to remove all jewelry before starting the operation.
8. Visually inspect the machine periodically during operation for signs of excessive vibration, loose fasteners, and unusual noises.

PLEASE READ, VERY IMPORTANT



SECURE THE CORN HEADER AGAINST UNWANTED LOWERING BY APPLYING THE LOCKING MECHANISM ON HYDRAULIC CYLINDERS!

1. Attach head to combine, lock head to combine
2. Raise the head off the ground and engage safety stop on the feeder house cylinder
3. Turn off the combine engine and remove the key

FOLLOW ALL INSTRUCTIONS GIVEN BY THE COMBINE MANUFACTURER

Subject to the size and weight of the corn header, one or two additional hydraulic cylinders may be required.

The combine manufacturer generally keeps corresponding kits readily available for dealers.

Subject to the design of the corn header & the carry capacity of different combines, the steering axel may require the fitting of additional weights & the rear tires be filled with ballast.



FOLLOW ALL INSTRUCTIONS GIVEN BY THE COMBINE MANUFACTURER

TABLE OF CONTENTS

FOREWARD.....	2
WARRANTY.....	2
SAFETY INFORMATION.....	3 – 4
TABLE OF CONTENTS.....	5
TORQUE / TOOLS REQUIRED.....	5
ASSEMBLY INSTRUCTIONS	6 – 11
5000-023 & 5000-024	6 – 8
5000-035.....	9 – 11
OPERATION / BEARING / STORAGE / LOCK UP.....	12
PARTS IDENTIFICATION.....	13 – 21
5000-023.....	13 – 15
5000-024.....	16 – 18
5000-035.....	19 – 21
TROUBLESHOOTING.....	22



BOLT TORQUE





Important: Over-tightening hardware can cause just as much damage as under-tightening. Tightening hardware beyond the recommended range can reduce its shock load capacity.

All hardware on the 5000 Devastator is either Grade 5 or Grade 8, unless otherwise noted. Grade 5 cap screws are marked with three radial lines on the head. Grade 8 cap screws are marked with six radial lines on the head. If hardware must be replaced, be sure to replace it with hardware of equal size, strength & thread type. Refer to the torque values chart when tightening hardware.

The chart below is a guide for proper torque. Use it unless a specified torque is called out elsewhere in the manual. Torque is the force applied to the end of the handle or cheater bar, times the length of the handle or bar.

Use a torque wrench wherever possible

The following table shows torque in ft.-lbs. for coarse thread hardware.

Bolt Diameter and Threads per Inch	 Grade 2	 Grade 5	 A-325	 Grade 8
1/4	6	10	10	14
5/16	12	20	20	30
3/8 – 16	25	35	35	50
7/16 – 14	35	55	55	80
1/2 – 13	55	85	85	125
9/16 – 12	75	125	125	175
5/8 – 11	105	170	170	235
3/4-10	185	305	305	425
7/8 – 9	170	445	445	690
1-8	260	670	670	1030
1 1/8 – 7	365	900	900	1460
1 1/4 - 7	515	1275	1275	2060
1 3/8 – 6	675	1675	1675	2700
1 1/2 - 6	900	2150	2150	3500
1 3/4 – 5	1410	3500	3500	5600

INSTALLATION TOOLS REQUIRED:

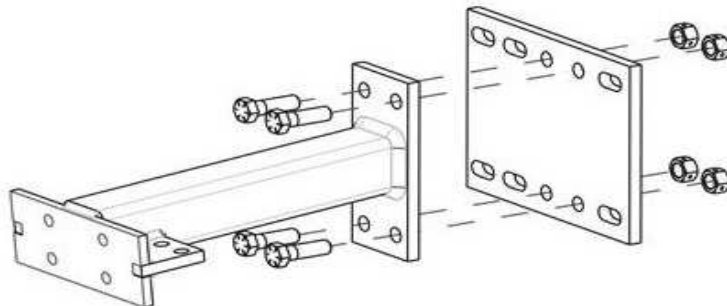
- Pneumatic or electric impact driver
- 3/4 & 15/16 size sockets
- 10" impact driver extension
- Ratchet
- 3/4, 15/16, & 1 1/8 size wrenches
- 5/16 Allen Wrench
- Torque Wrench



5000-023A & 5000-024A ASSEMBLY INSTRUCTION

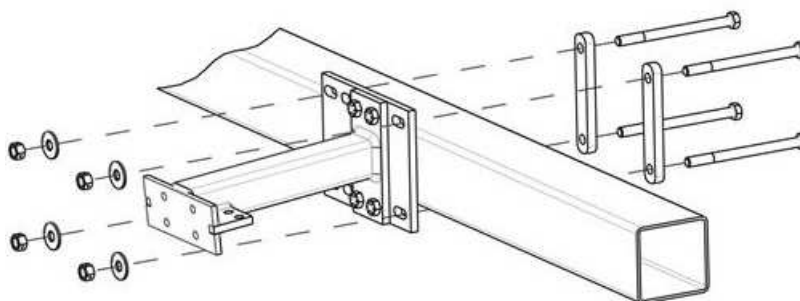
GLENER 3000 / HUGGER 630 / MF 3000 / CHALLENGER CH630

STEP 1. Attach the 5000-248 Extension Mount to the 5000-247 Plate using 5/8" X 2" Bolts & 5/8" Lock Hex Nuts.

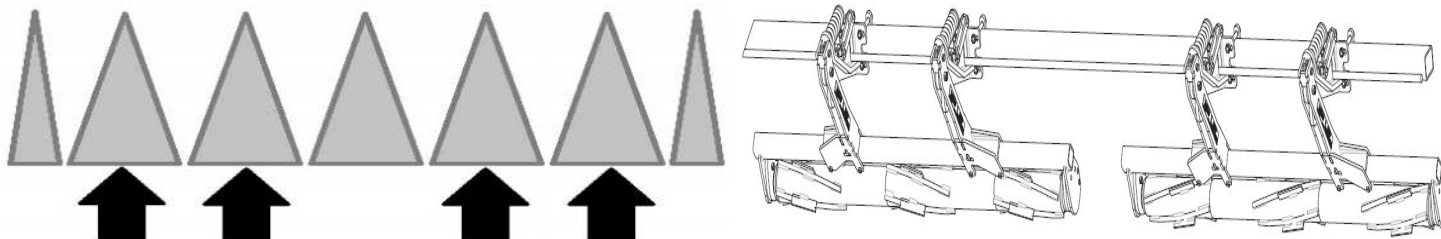


STEP 2. Install the Mount Assembly to the Corn Head Frame using 5/8" X 8" Bolts, Clamp Plates, 5/8" Washers, & 5/8" Lock Hex Nuts.

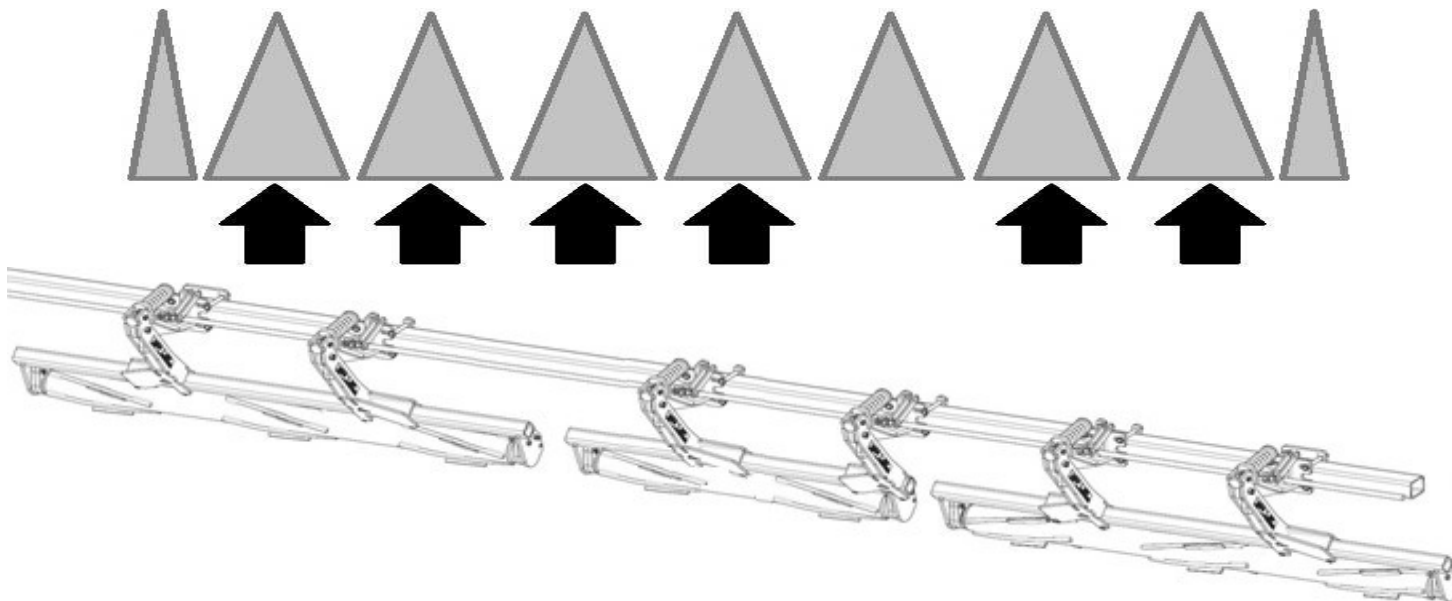
NOTE: Do not fully tighten hardware until the pivot arms are installed during Step 6.



5000-023 & 5000-023A 6 ROW MOUNTING LOCATIONS

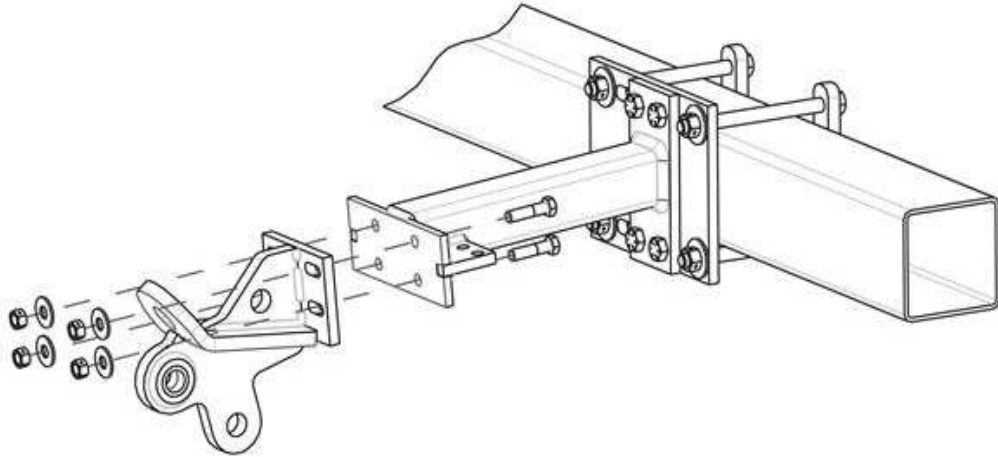


5000-024 & 5000-024A 8 ROW MOUNTING LOCATIONS

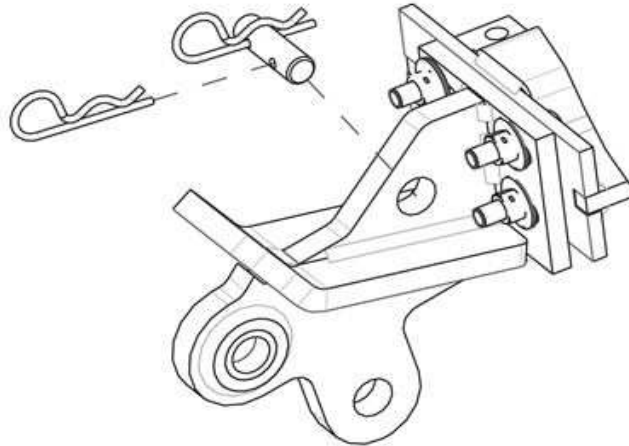


5000-023A & 5000-024A ASSEMBLY INSTRUCTION

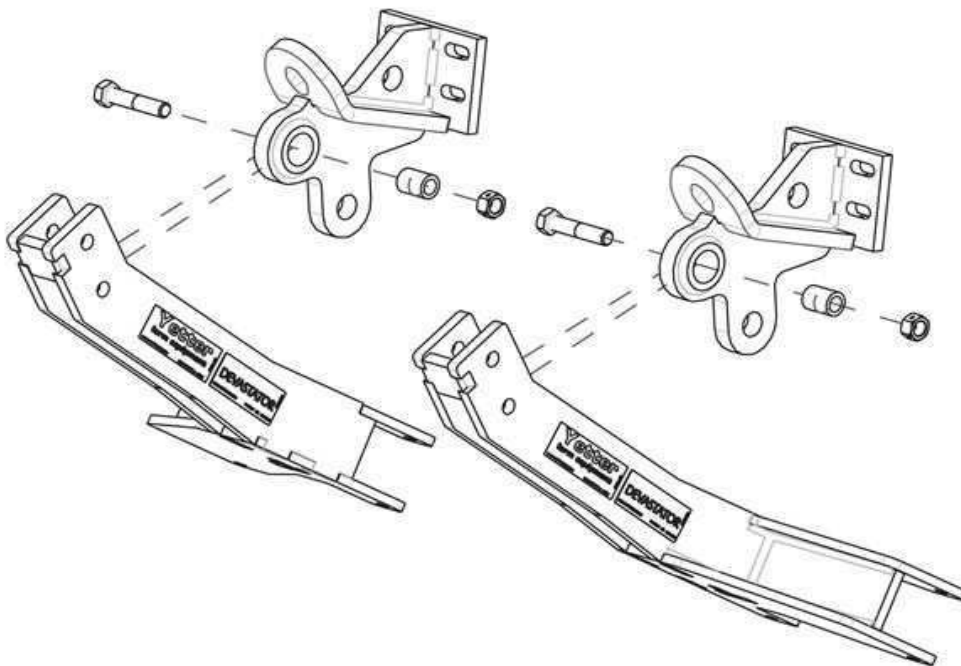
STEP 3: Attach the 5000-135 Arm Mounts to the Extension Mount Bracket using 1/2" X 2" Bolts, 1/2" Washers, & 1/2" Lock Hex Nuts.



STEP 4: Install the 5000-323 Lock Up Pin in the storage location on the mount arms, secure with Hair Pin Clips.

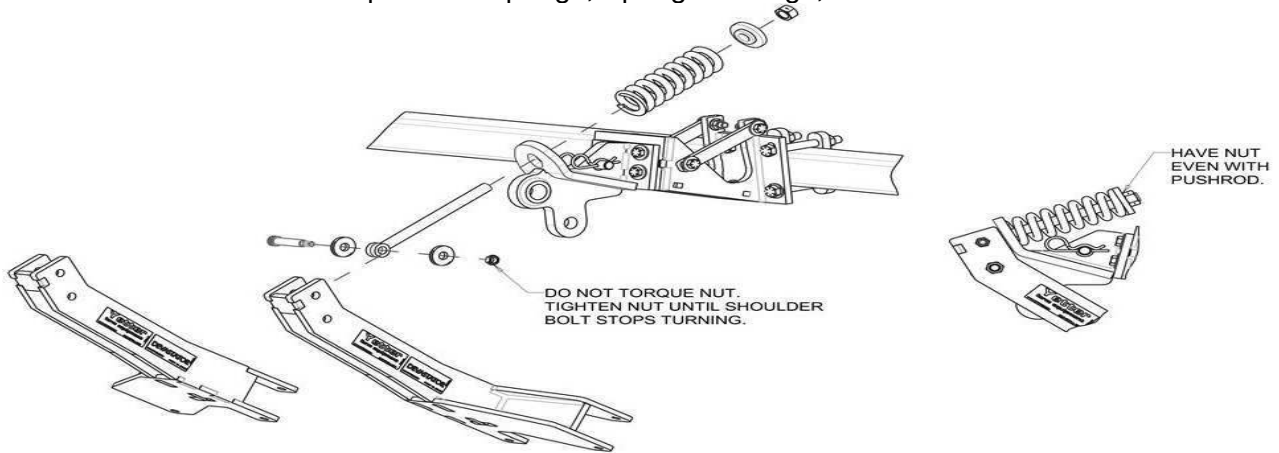


STEP 5: Attach the 5000-256 & 5000-259 Overbearing Arms to the Mount Brackets using 5/8" X 3" Bolts, Pivot Bushings, & 5/8" Lock Hex Nuts. Fully tighten all the hardware at this time.



5000-023A & 5000-024A ASSEMBLY INSTRUCTION

STEP 6: Install the push rods into the mount brackets & attach to the pivot arms using the 5/8" Shoulder Bolts, 5/8" Washers, & 1/2" Jam Nuts. The washers are to be installed on each side of the "Eye" on the push Rod. Now install the Compression Springs, Spring Bushings, & 3/4" Lock Hex Nut.

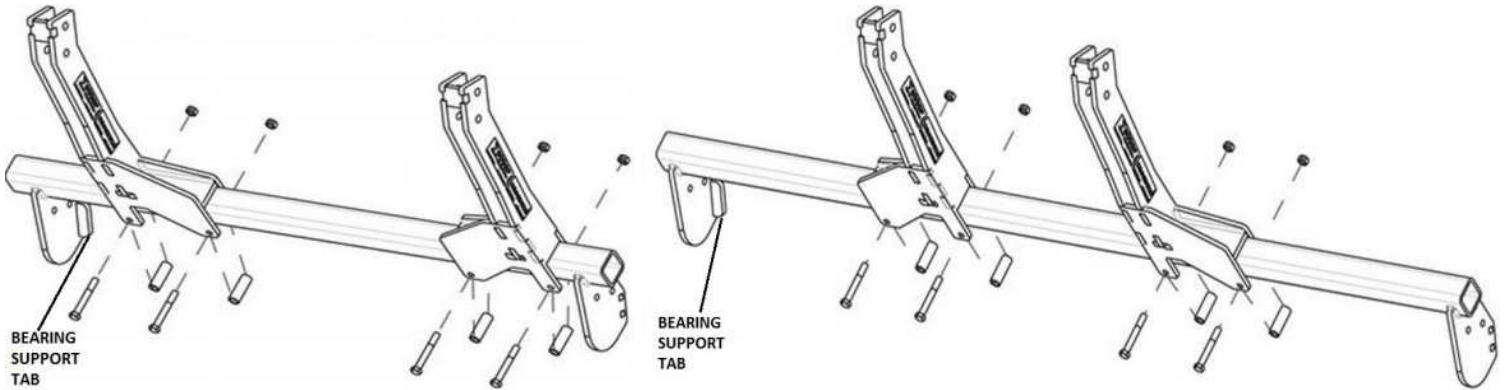


STEP 7: Attach the roller mounts to the over bearing arms, & then install the 1/2" X 3 3/4" Bolts, Spacers, & 1/2" Lock Nuts. Slide the roller mount tubes side to side as needed to clear the end of the corn head.

NOTE: Make sure the Bearing Support Tab in on the backside of the Bearing Mounting Plate.

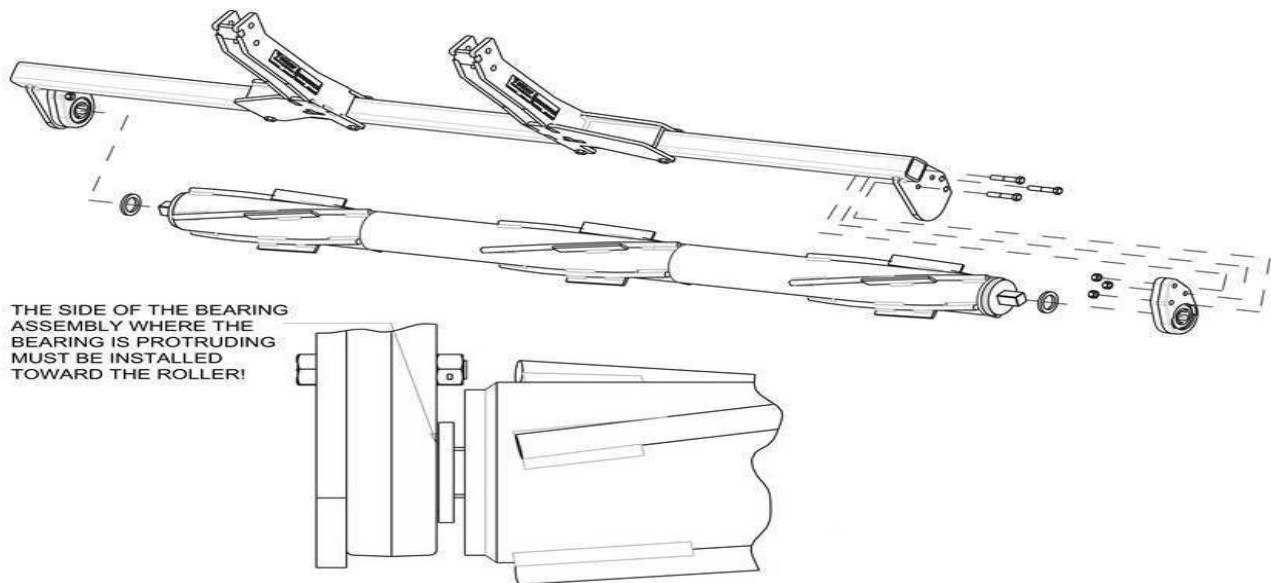
2 ROW ROLLER ASSEMBLY

3 ROW ROLLER ASSEMBLY



STEP 8: Install the Shim Washers & Bearing onto each side of the Roller.

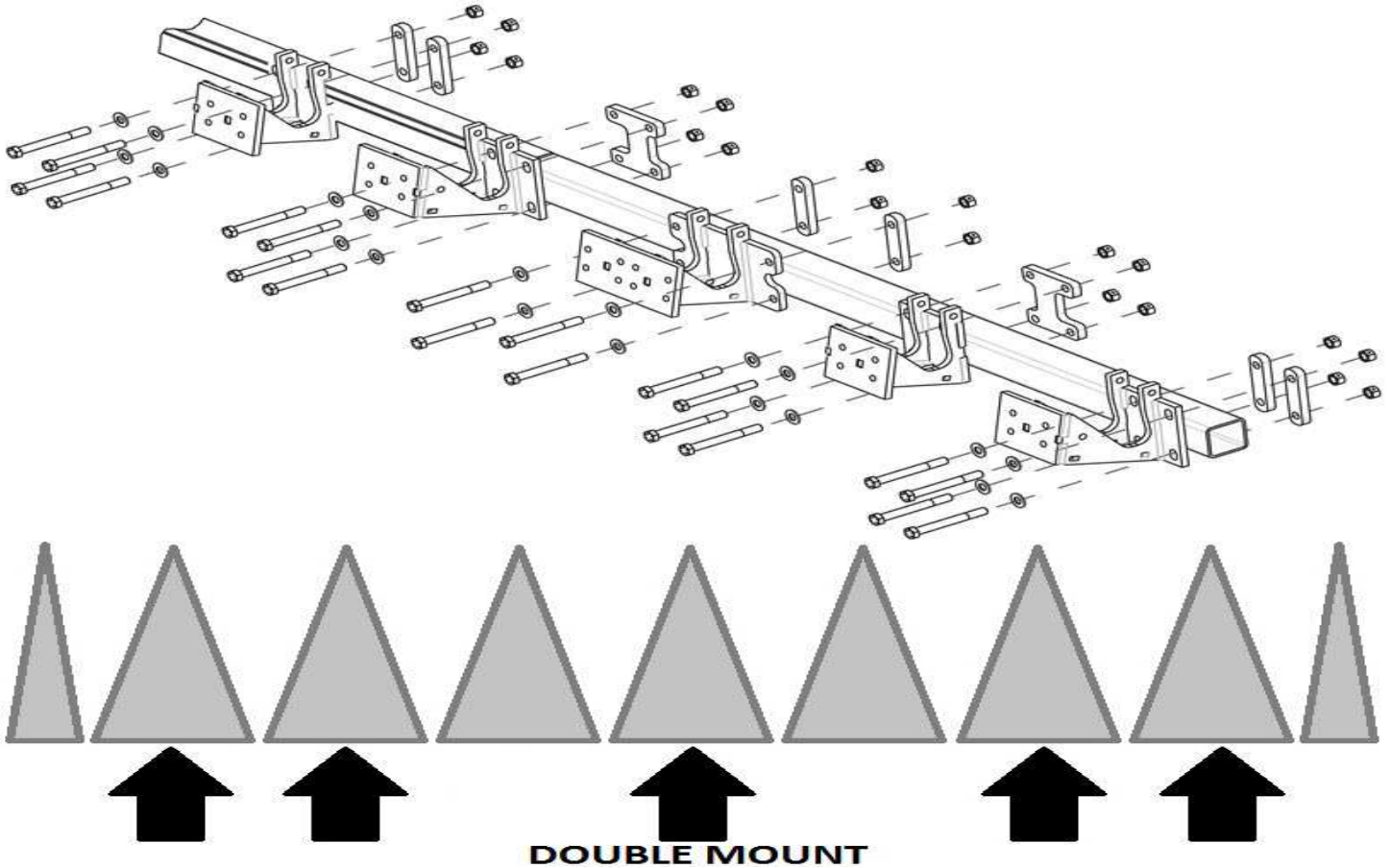
NOTE: The side of the Bearing protruding on the outside of the casting should face the Roller. Attach the Roller/Bearing assembly to the Roller Mount Tube using 1/2" X 2 1/2" Bolts & 1/2" Lock Hex Nuts.



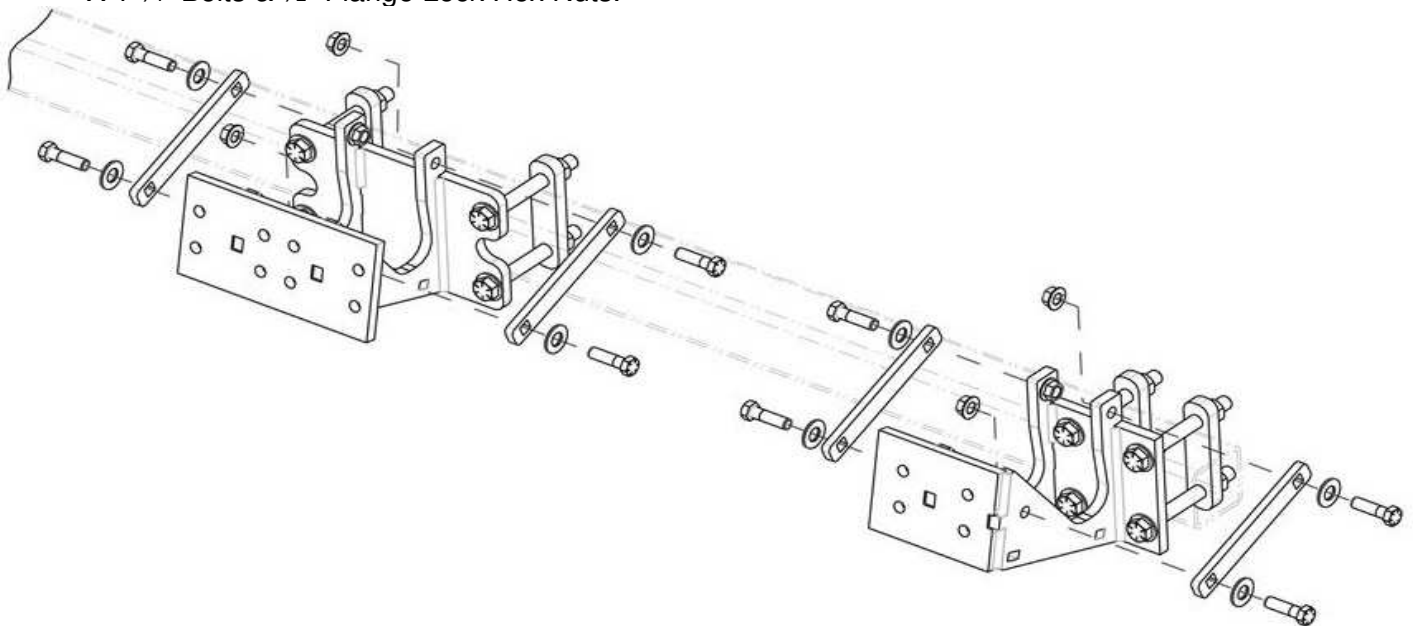
5000-035A ASSEMBLY INSTRUCTION

AGCO GLEANER 3308

STEP 1: Install the Mount Assemblies on the Corn Head Frame using 5/8" X 5 1/2" Bolts, Mount Straps, Clamp Brackets/Straps, 5/8" Washers, & 5/8" Lock Hex Nut. Place Mounts, Mount Straps, & Brackets as shown. The Double Mount goes between rows 4 & 5.

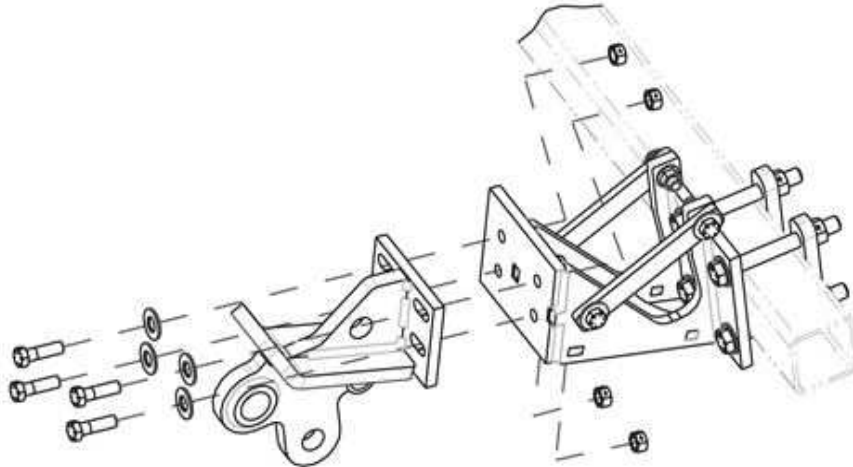


STEP 2: Attach the 5000-309 Support Straps to the 5000-246, 5000-251, & 5000-252 Offset Mounts using the 1/2" X 1 3/4" Bolts & 1/2" Flange Lock Hex Nuts.

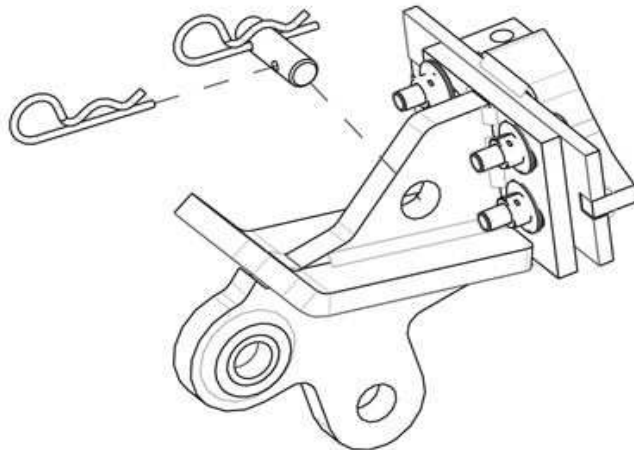


5000-035A ASSEMBLY INSTRUCTION

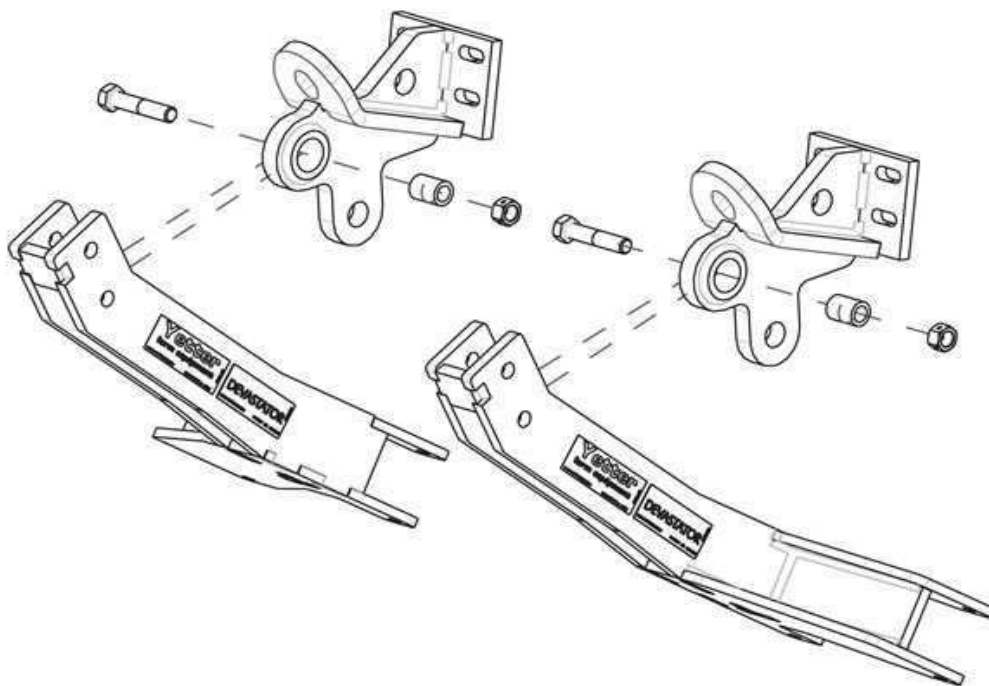
STEP 3: Attach 1) 5000-135 Arm Mount on each Offset Mount using $\frac{1}{2}$ " X $1 \frac{3}{4}$ " Bolts, $\frac{1}{2}$ " Washers, & $\frac{1}{2}$ " Lock Hex Nuts. Attach 2 Arm Mounts to the Double Offset on rows 4 & 5.



STEP 4: Install a 5000-323 Lock Up Pin in the storage location on the Mount Arms & secure with Hair Pin Clips.

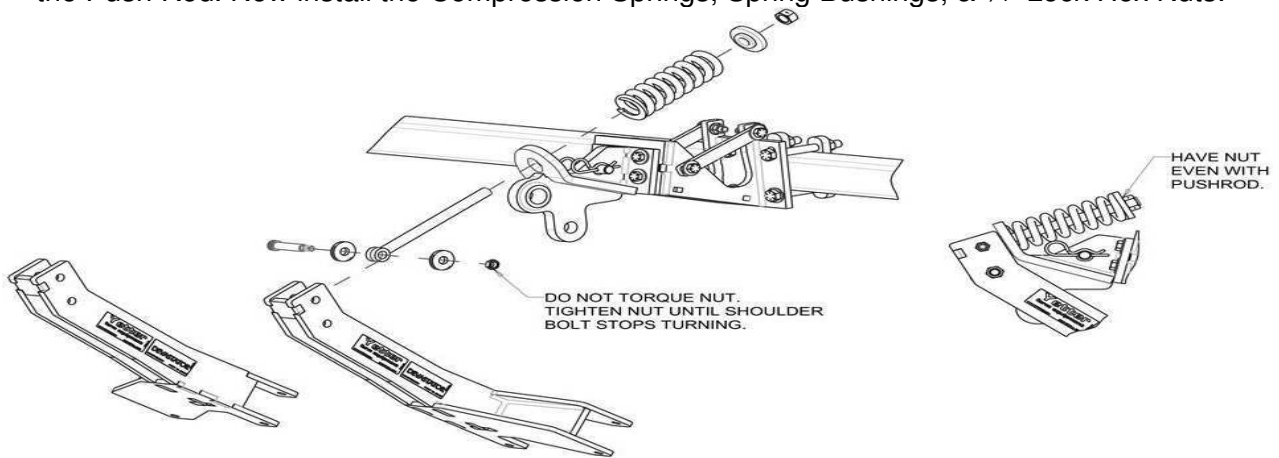


STEP 5: Attach the 5000-256 & 5000-259 Overbearing Arms to the Mount Brackets using $\frac{5}{8}$ " X 3" Bolts, Pivot Bushings, & $\frac{5}{8}$ " Lock Hex Nuts. Fully tighten all hardware at this time.



5000-035A ASSEMBLY INSTRUCTION

STEP 6: Install the Push Rods into the Mount Brackets & attach to the Pivot Arms using 5/8" Shoulder Bolts, 5/8" Washers, & 1/2" Jam Lock Hex Nuts. The Washers are to be installed on each side of the "EYE" on the Push Rod. Now install the Compression Springs, Spring Bushings, & 3/4" Lock Hex Nuts.

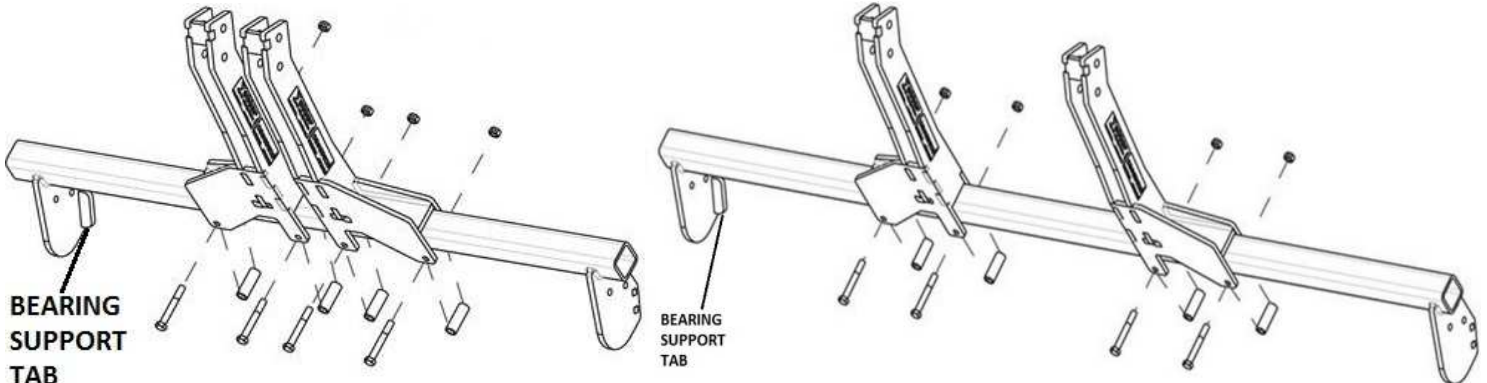


STEP 7: Attach the Roller Mounts to the Overbearing Arms, & then install the 1/2" X 3 3/4" Bolts, Spacers, & 1/2" Lock hex Nuts. Slide the Roller Mount Tubes side to side as needed to clear the end of the Corn Head.

NOTE: Make sure the Bearing Support Tab in on the backside of the Bearing Mounting Plate.

2 ROW ROLLER ASSEMBLY

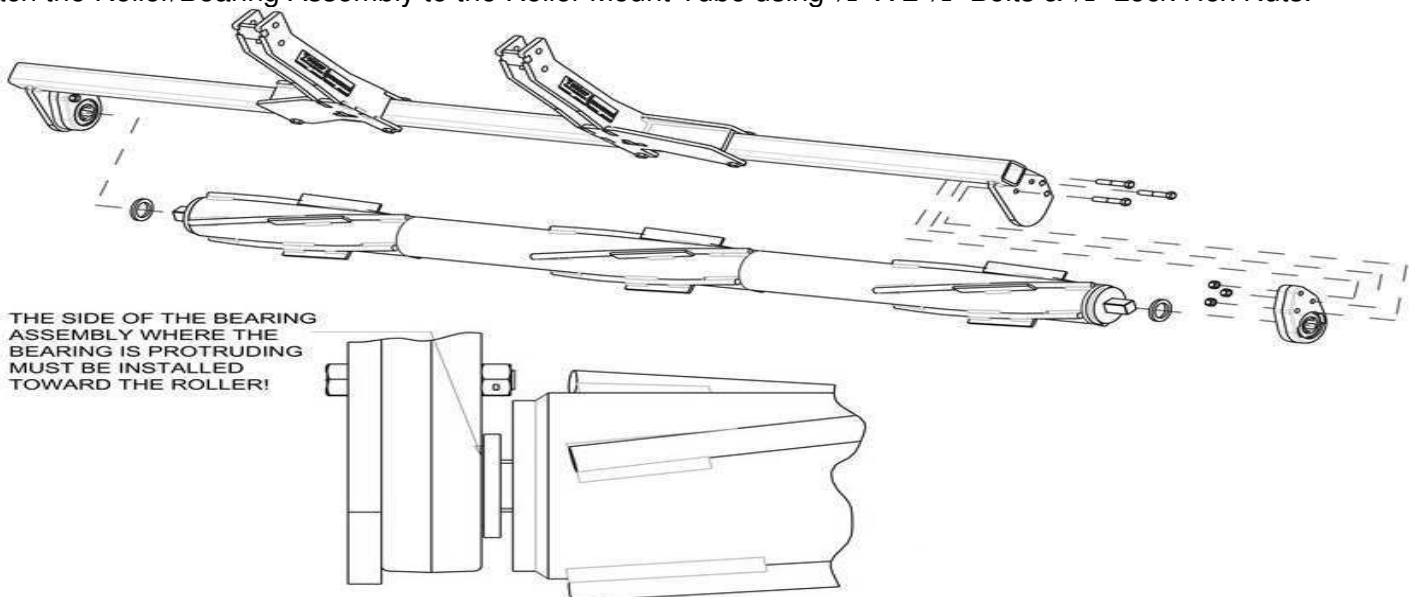
3 ROW ROLLER ASSEMBLY



STEP 8: Install the Shim Washers & Bearings onto each side of the Roller.

NOTE: The side of the Bearing Protruding on the outside of the casting should face the Roller.

Attach the Roller/Bearing Assembly to the Roller Mount Tube using 1/2" X 2 1/2" Bolts & 1/2" Lock Hex Nuts.



OPERATION

CORN HEAD ANGLE SHOULD BE BETWEEN 23 – 25° FOR OPTIMUM DEVASTATOR PERFORMANCE. USE THE 5000-455 TO CHECK CORN HEAD ANGLE:

- Put the combine on a level surface. Lower the Corn head to your normal working head height.
- Place the magnetic protractor on the stripper plate to get the angle. Adjust the feeder house as needed, fore or aft, to achieve 23 – 25 degrees.



BEARING REPLACEMENT

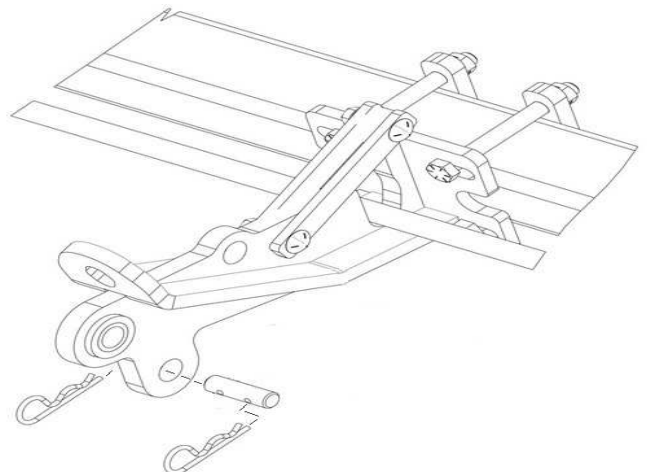
Put the bearing housing in a vice, use a pry bar to turn the bearing in the housing parallel with the slots, remove the old bearing, apply anti-seize lubricant to the interior of the bearing housing, insert the new bearing in the slots, & use a pry bar to move back to position. Wobble the bearing around to help work the lubricant into the outer race of the bearing.



STORAGE

When storing the corn head for the offseason, it is OK for the 5000 Stalk Devastators to hold some weight of the corn head whether stored on the ground or on a trailer. Removing compression springs may help extend the service life.

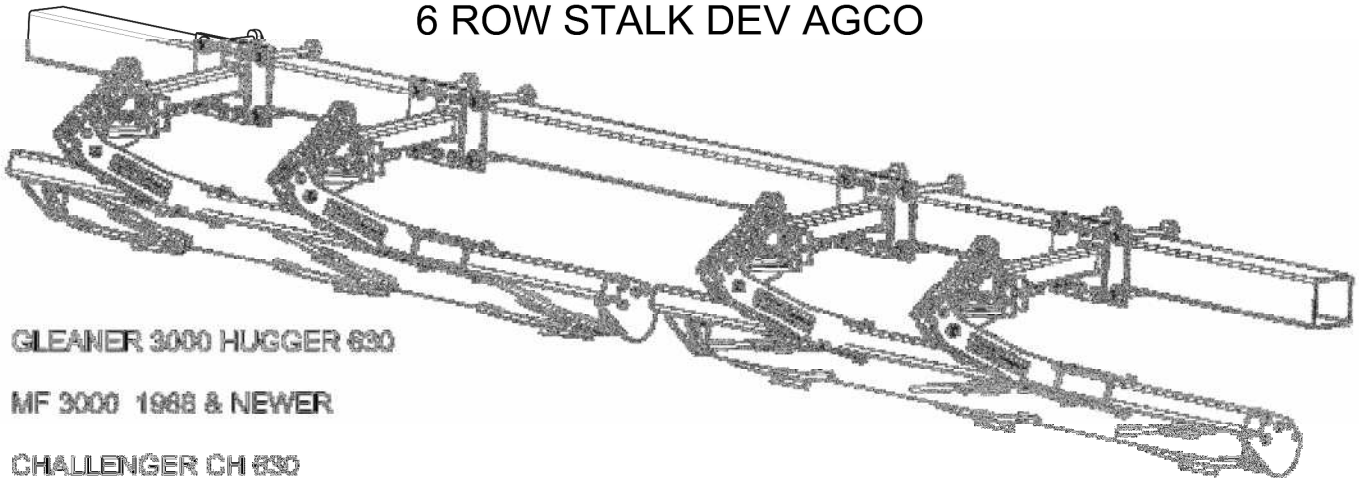
LOCKING UP THE 5000 SERIES STALK DEVASTATOR



PARTS IDENTIFICATION

5000-023A

6 ROW STALK DEV AGCO



GLENER 3000 HUGGER 630

MF 3000 1988 & NEWER

CHALLENGER CH 630

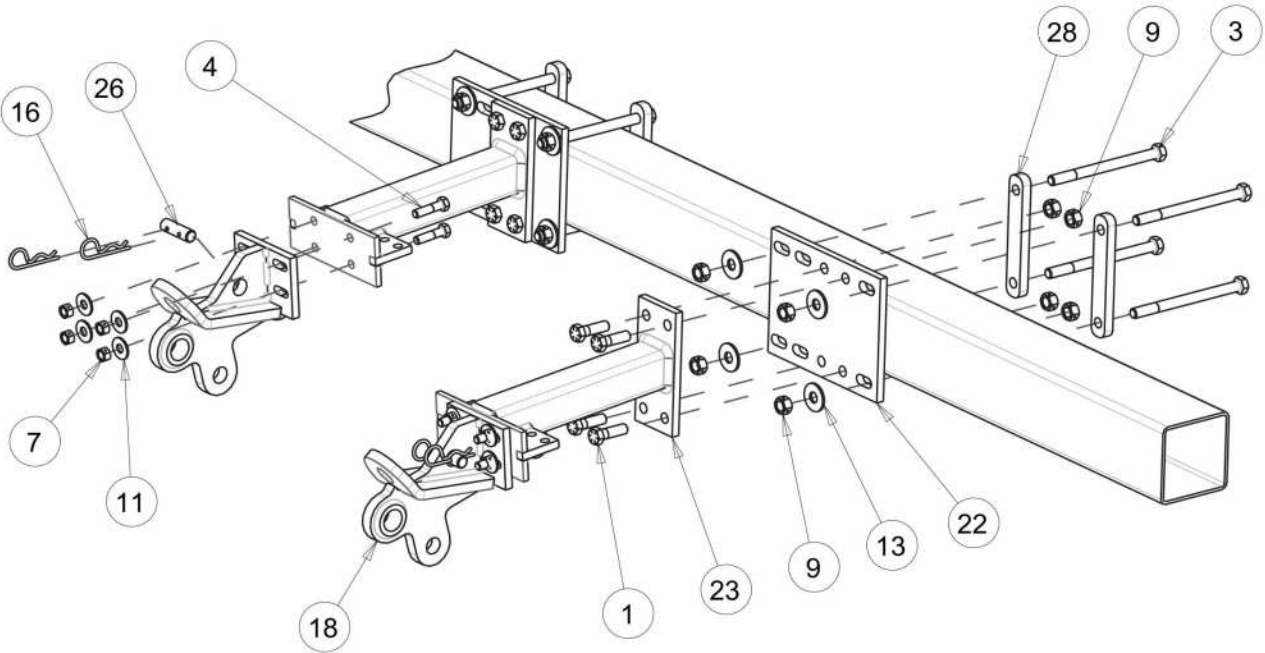
ITEM	PART #	DESCRIPTION	QTY
1	2502-322	5/8-11 X 2 HHCS GR 8	16
2	2502-325	5/8-11 X 3 HHCS GR 5	4
3	2502-342	5/8-11 X 8 HHCS GR 8, ZP	16
4	2502-350	1/2-13 X 2 HHCS GR 8, ZP	16
5	2502-353	1/2-13 X 2-1/2 HHCS GR 8, ZP	12
6	2510-121	5/8" DIA SHLDR, 2-1/4" L SHLDR, 1/2-13	4
7	2520-357	1/2-13 LOCK HEX NUT, GR A, ZP	36
8	2520-384	WUF 1/2-13 HEX LOCKNUT, JAM. ZP	4
9	2520-459	5/8-11 LOCK HEX NUT, GR B, ZP	36
10	2520-515	3/4-10 LOCK HEX NUT, ZP	4
11	2526-351	1/2 STANDARD FLATWASHER, ZP	16
12	2526-448	5/8ID X 1-3/4 OD X 1/4 WASHER	8
13	2526-461	5/8 STANDARD FLATWASHER, ZP	16
14	2550-708	1/2 WIRE 2-1/2 OD X 1-1/2 ID X 7-1/4 COMP SPRING	4
15	2570-126	3/4 X 10 EYEBOLT, ZP	4
16	2570-465	7GA. HAIRPIN COTTER, ZP	8
17	2975-302	2975 SPRING BUSHING "PAINTED"	4
18	5000-135	ARM MOUNT AGCO	4
19	5000-211A	ROLLER W.A., LH 76" (SHOWN)	1
20	5000-212A	ROLLER W.A., RH 76"	1
21	5000-264	PIVOT ARM W.A., 3 ROW ROLLER, CENTERED	2
22	5000-247	PLATE, MOUNT ADJUSTMENT	4
23	5000-248	EXTENSION, AGCO MOUNT	4
24	5000-318	PIVOT BUSHING	4
25	5000-322	SHIM WASHER, ZP	4
26	5000-323	LOCK UP PIN, ZP	4
27	5000-356	1-1/4 DISC HARROW BEARING, W208PF88, HD ASSY	4
28	5000-385	MOUNT PLATE, 6"	8
29	2526-368	1.388 OD X 1.89 ID X 1.26 L, BEARING SLEEVE	4
30	5000-249	ARM AGCO MOUNT W.A.	4
31	5000-256	OVER BEARING ARM 19" LH	2
32	5000-259	OVER BEARING ARM 19" RH	2
33	2502-385	1/2-13 X 3-3/4 HHCS GR 5, ZP	8
34	5000-378	SPACER BUSHING	8

5000-023A

PARTS IDENTIFICATION

5000-023A

6 ROW STALK DEV AGCO

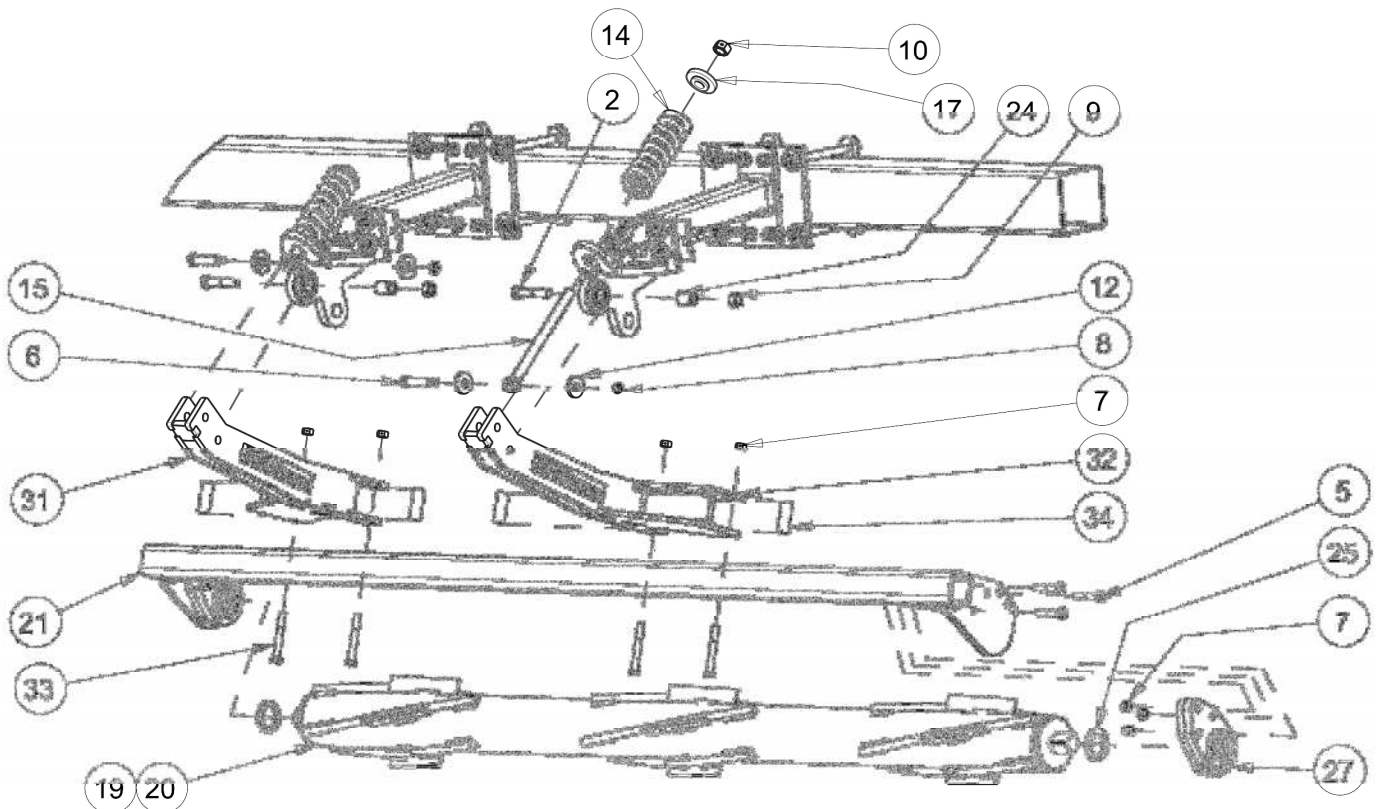


ITEM	PART #	DESCRIPTION	QTY
1	2502-322	5/8-11 X 2 HHCS GR 8	16
3	2502-342	5/8-11 X 8 HHCS GR 8, ZP	16
4	2502-350	1/2-13 X 2 HHCS GR 8, ZP	16
7	2520-357	1/2-13 LOCK HEX NUT, GR A, ZP	16
9	2520-459	5/8-11 LOCK HEX NUT, GR B, ZP	32
11	2526-351	1/2 STANDARD FLATWASHER, ZP	16
13	2526-451	5/8 STANDARD FLATWASHER, ZP	16
16	2570-465	7GA. HAIRPIN COTTER, ZP	8
18	5000-135	ARM MOUNT AGCO ASSEMBLY	4
	2528-369	1.380 OD X 1.00 ID X 1.25 L BEARING SLEEVE	
22	5000-247	PLATE, MOUNT ADJUSTMENT	4
23	5000-248	EXTENSION, AGCO MOUNT	4
26	5000-323	LOCK UP PIN, ZP	4
28	5000-365	MOUNT PLATE, 6"	8

5000-023A

PARTS IDENTIFICATION

5000-023A 6 ROW STALK DEV AGCO



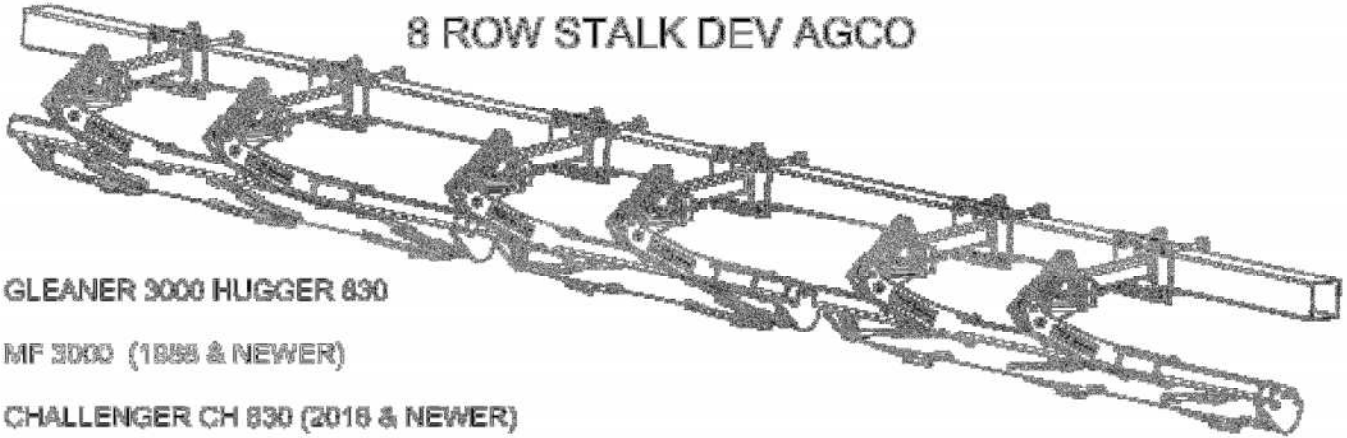
ITEM	PART #	DESCRIPTION	QTY
2	2502-325	5/8-11 X 3 HHCS GR 5	4
5	2502-353	1/2-13 X 2-1/2 HHCS GR 8, ZP	12
6	2510-121	5/8" DIA SHLDR, 2-1/4" L SHLDR, 1/2-13	4
7	2520-357	1/2-13 LOCK HEX NUT, GR A, ZP	20
8	2520-364	WU/ 1/2-13 HEX LOCKNUT, JAM, ZP	4
9	2520-459	5/8-11 LOCK HEX NUT, GR B, ZP	4
10	2520-515	3/4-10 LOCK HEX NUT, ZP	4
12	2526-449	5/8ID X 1-3/4 OD X 1/4 WASHER	8
14	2550-709	1/2 WIRE 2-1/2 OD X 1-1/2 ID X 7-1/4 COMP SPRING	4
15	2570-126	3/4 X 10 EYEBOLT, ZP	4
17	2975-302	2975 SPRING BUSHING "PAINTED"	4
19	5000-211A	ROLLER W.A., LH 78" (SHOWN)	1
20	5000-212A	ROLLER W.A., RH 78"	1
21	5000-254	PIVOT ARM W.A., 3 ROW ROLLER, CENTERED	2
24	5000-316	PIVOT BUSHING	4
25	5000-322	SHIM WASHER, ZP	4
27	5000-355	1-1/4 DISC HARROW BEARING, W208PP65, HD ASSY	4
	2550-059	BEARING - SERVICE PART	
31	5000-258	OVER BEARING ARM 18" LH	2
32	5000-259	OVER BEARING ARM 18" RH	2
33	2502-365	1/2-13 X 3-3/4 HHCS GR 5, ZP	8
34	5000-378	SPACER BUSHING	8

5000-023A

PARTS IDENTIFICATION

5000-024A

8 ROW STALK DEV AGCO



GLENER 3000 HUGGER 830

MF 3000 (1988 & NEWER)

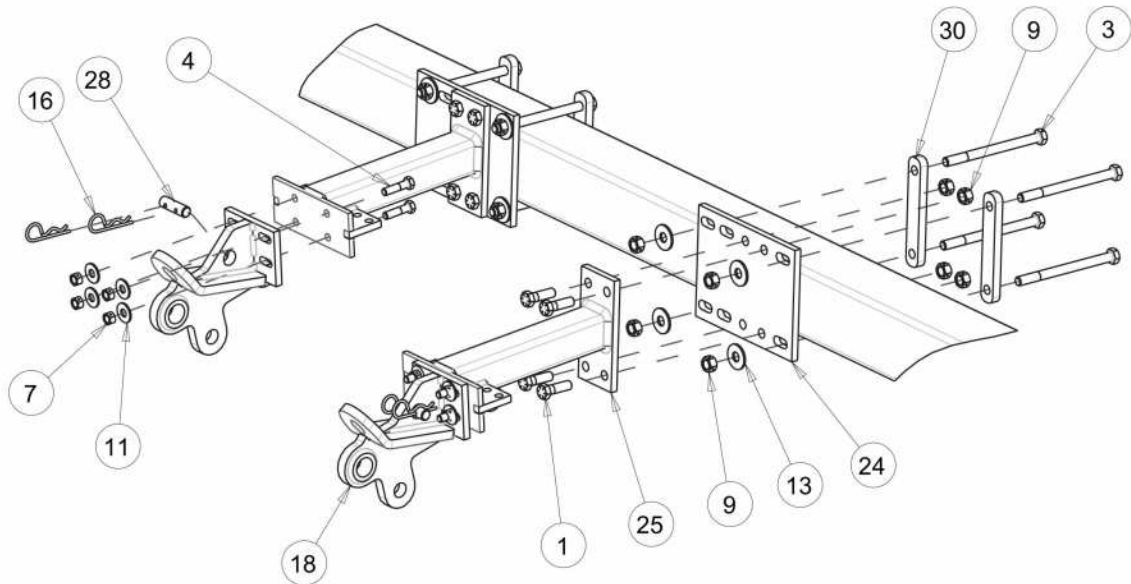
CHALLENGER CH 830 (2016 & NEWER)

ITEM	PART #	DESCRIPTION	QTY
1	2502-322	5/8-11 X 2 HHCS GR 8	24
2	2502-325	5/8-11 X 3 HHCS GR 5	8
3	2502-342	5/8-11 X 8 HHCS GR 8, ZP	24
4	2502-350	1/2-13 X 2 HHCS GR 8, ZP	24
5	2502-353	1/2-13 X 2-1/2 HHCS GR 8, ZP	18
6	2510-121	5/8" DIA SHldr, 2-1/4" L SHldr, 1/2-13	8
7	2520-867	1/2-13 LOCK HEX NUT, GR A, ZP	64
8	2520-364	WU/ 1/2-13 HEX LOCKNUT, JAM, ZP	6
9	2520-469	5/8-11" LOCK HEX NUT, GR B, ZP	64
10	2520-616	3/4-18 LOCK HEX NUT, ZP	8
11	2526-351	1/2 STANDARD FLATWASHER, ZP	24
12	2526-449	5/8ID X 1-3/4 OD X 1/4 WASHER	12
13	2526-451	5/8 STANDARD FLATWASHER, ZP	24
14	2550-708	1/2 WIRE 2-1/2 OD X 1-1/2 ID X 7-1/4 COMP SPRING	8
15	2570-128	3/4 X 10 EYEBOLT, ZP	8
16	2570-465	7GA. HAIRPIN COTTER, ZP	12
17	2975-302	2975 SPRING BUSHING "PAINTED"	6
18	5000-135	ARM MOUNT AGCO	6
19	5000-203A	ROLLER W.A. 48"	1
20	5000-211A	ROLLER W.A., LH 76" (SHOWN)	1
21	5000-212A	ROLLER W.A., RH 76"	1
22	5000-256	PIVOT ARM W.A., RH	1
23	5000-354	PIVOT ARM W.A., 3 ROW ROLLER, CENTERED	2
24	5000-247	PLATE, MOUNT ADJUSTMENT	6
25	5000-248	EXTENSION, AGCO MOUNT	6
26	5000-318	PIVOT BUSHING	6
27	5000-322	SHIM WASHER, ZP	6
28	5000-323	LOCK UP PIN, ZP	6
29	5000-355	1-1/4 DISC HARROW BEARING, W209PPB5, HD ASS'Y	6
30	5000-365	MOUNT PLATE, 8"	12
31	2628-388	1.3881 OD X 1.00 ID X 1.26 L, BEARING SLEEVE	6
32	5000-249	ARM AGCO MOUNT W.A.	6
33	5000-266	OVER BEARING ARM 18" LH	3
34	5000-259	OVER BEARING ARM 19" RH	3
35	2502-365	1/2-13 X 3-3/4 HHCS GR 5, ZP	12
36	5000-378	SPACER BUSHING	12

5000-024A

PARTS IDENTIFICATION

5000-024A 8 ROW STALK DEV AGCO



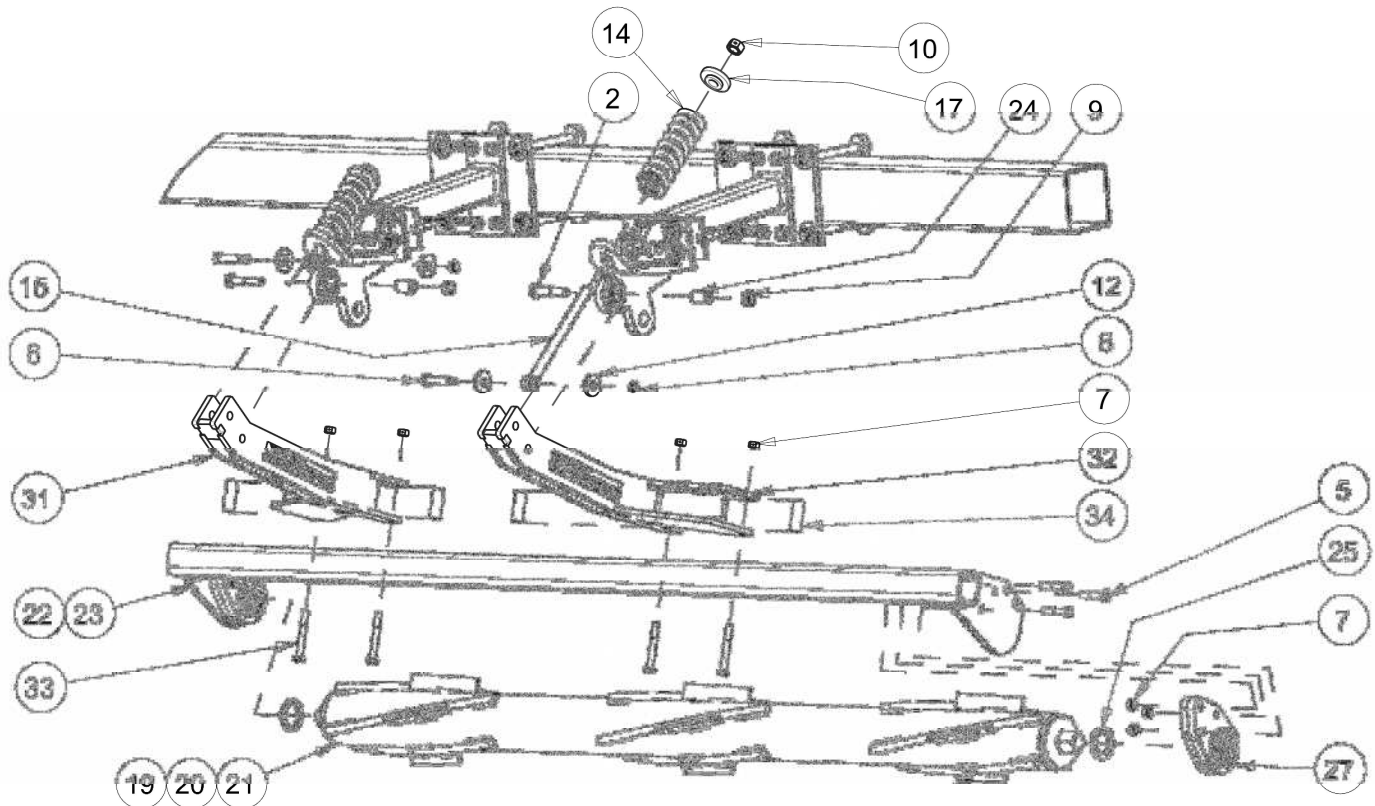
ITEM	PART #	DESCRIPTION	QTY
1	2502-322	5/8-11 X 2 HHCS GR 8	24
3	2502-342	5/8-11 X 8 HHCS GR 8, ZP	24
4	2502-350	1/2-13 X 2 HHCS GR 8, ZP	24
7	2520-357	1/2-13 LOCK HEX NUT, GR A, ZP	24
9	2520-459	5/8-11 LOCK HEX NUT, GR B, ZP	48
11	2526-351	1/2 STANDARD FLATWASHER, ZP	24
13	2526-451	5/8 STANDARD FLATWASHER, ZP	24
16	2570-465	7GA. HAIRPIN COTTER, ZP	12
18	5000-135	ARM MOUNT AGCO ASSEMBLY	6
	2528-369	1.380 OD X 1.00 ID X 1.25 L BEARING SLEEVE	
24	5000-247	PLATE, MOUNT ADJUSTMENT	6
25	5000-248	EXTENSION, AGCO MOUNT	6
28	5000-323	LOCK UP PIN, ZP	6
30	5000-365	MOUNT PLATE, 6"	12

5000-024A

PARTS IDENTIFICATION

5000-024A

8 ROW STALK DEV AGCO



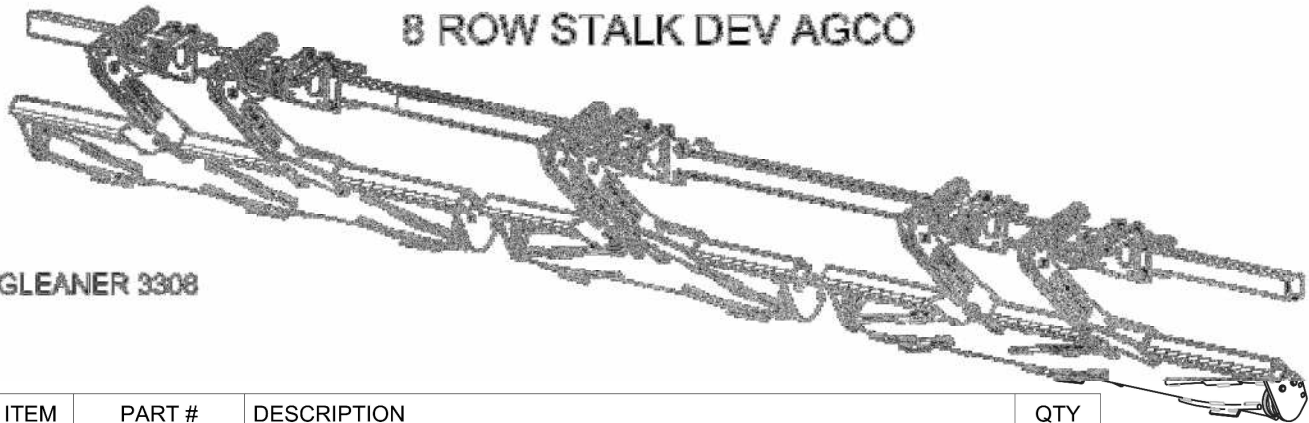
ITEM	PART #	DESCRIPTION	QTY
2	2502-325	5/8-11 X 3 HHCS GR 5	6
5	2502-353	1/2-13 X 2-1/2 HHCS GR 8, ZP	18
6	2510-121	5/8" DIA SHLDR, 2-1/4" L SHLDR, 1/2-13	6
7	2520-357	1/2-13 LOCK HEX NUT, GR A, ZP	30
8	2520-384	WU 1/2-13 HEX LOCKNUT, JAM, ZP	6
9	2520-458	5/8-11 LOCK HEX NUT, GR B, ZP	6
10	2520-515	3/4-10 LOCK HEX NUT, ZP	6
12	2526-448	5/8ID X 1-3/4 OD X 1/4 WASHER	12
14	2550-708	1/2 WIRE 2-1/2 OD X 1-1/2 ID X 7-1/4 COMP SPRING	6
15	2570-128	3/4 X 10 EYEBOLT, ZP	6
17	2875-302	2875 SPRING BUSHING "PAINTED"	6
19	5000-203A	ROLLER W.A. 48"	1
20	5000-211A	ROLLER W.A., LH 76" (SHOWN)	1
21	5000-212A	ROLLER W.A., RH 76"	1
22	5000-255	PIVOT ARM W.A., RH	1
23	5000-254	PIVOT ARM W.A., 3 ROW ROLLER, CENTERED	2
24	5000-318	PIVOT BUSHING	6
25	5000-322	SHIM WASHER, ZP	6
27	5000-355	1-1/4 DISC HARROW BEARING, W209PPB5, HD ASS'Y	6
	2550-058	BEARING - SERVICE PART	
31	5000-258	OVER BEARING ARM 18" LH	3
32	5000-259	OVER BEARING ARM 19" RH	3
33	2502-365	1/2-13 X 3-3/4 HHCS GR 5, ZP	12
34	5000-378	SPACER BUSHING	12

5000-024A

PARTS IDENTIFICATION

5000-035

8 ROW STALK DEV AGCO



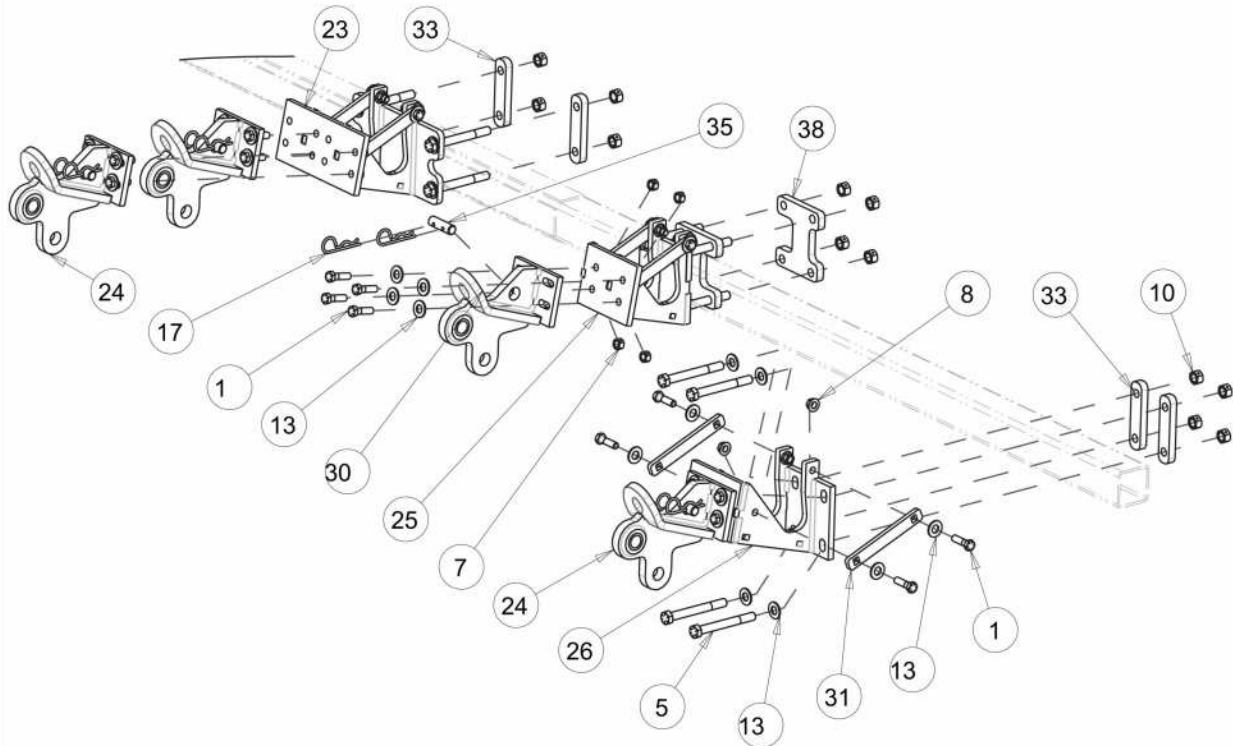
GLEANER 3308

ITEM	PART #	DESCRIPTION	QTY
1	2502-311	5/8-11 X 2 HHCS GR 8	44
2	2502-325	5/8-11 X 3 HHCS GR 5	6
3	2502-353	1/2-13 X 2-1/2 HHCS GR 8, ZP	18
4	2502-365	1/2-13 X 3-3/4 HHCS GR 8, ZP	12
5	2502-384	5/8-11 X 5-1/2 HHCS GR 8, ZP	20
6	2510-121	5/8" DIA SHLDR, 2-1/4" L SHLDR, 1/2-19	6
7	2520-367	1/2-13 LOCK HEX NUT, GR A, ZP	34
8	2520-361	1/2-13 FLANGE WHZLCK HEX NUT GR 5, ZP	20
9	2520-384	W/U 1/2-13 HEX LOCKNUT, JAM, ZP	6
10	2520-469	5/8-11 LOCK HEX NUT, GR B, ZP	20
11	2520-515	3/4-10 LOCK HEX NUT, ZP	6
12	2526-449	5/8ID X 1-3/4 OD X 1/4 WASHER	12
13	2526-453	5/8 STANDARD FLATWASHER, ZP	64
14	2528-389	1.390 OD X 1.00 ID X 1.25 L, BEARING SLEEVE	6
15	2630-709	1/2 WIRE 2-1/2 OD X 1-1/2 ID X 7-1/4 COMP SPRING	6
16	2570-126	3/4 X 10 EYEBOLT, ZP	6
17	2570-465	7GA. HAIRPIN COTTER, ZP	12
18	2975-302	2975 SPRING BUSHING "PAINTED"	6
19	5000-135	ARM MOUNT AGCO	6
20	5000-203A	ROLLER W.A. 48"	1
21	5000-211A	ROLLER W.A., LH 76" (SHOWN)	1
22	5000-212A	ROLLER W.A., RH 76"	1
23	5000-248	AGCO 3300 CENTER OFFSET MOUNT	1
24	5000-135	ARM AGCO MOUNT W.A.	6
25	5000-251	AGCO 3300 RH OFFSET MOUNT	2
26	5000-252	AGCO 3300 LH OFFSET MOUNT	2
27	5000-254	PIVOT ARM W.A., 3 ROW ROLLER, CENTERED	2
28	5000-265	PIVOT ARM W.A., RH	1
29	5000-256	OVER BEARING ARM 19" LH	3
30	5000-259	OVER BEARING ARM 19" RH	3
31	5000-309	SUPPORT STRAP	10
32	5000-318	PIVOT BUSHING	6
33	5000-319	MOUNT STRAP 3"	6
34	5000-322	SHIM WASHER, ZP	6
35	5000-323	LOCK UP PIN, ZP	6
36	5000-353	1-1/4 DISC HARROW BEARING, W/20FFES, HD ASSY	6
37	5000-378	SPACER BUSHING	12
38	5000-400	OFFSET CLAMP BRACKET	2

5000-035

PARTS IDENTIFICATION

5000-035 8 ROW STALK DEV AGCO



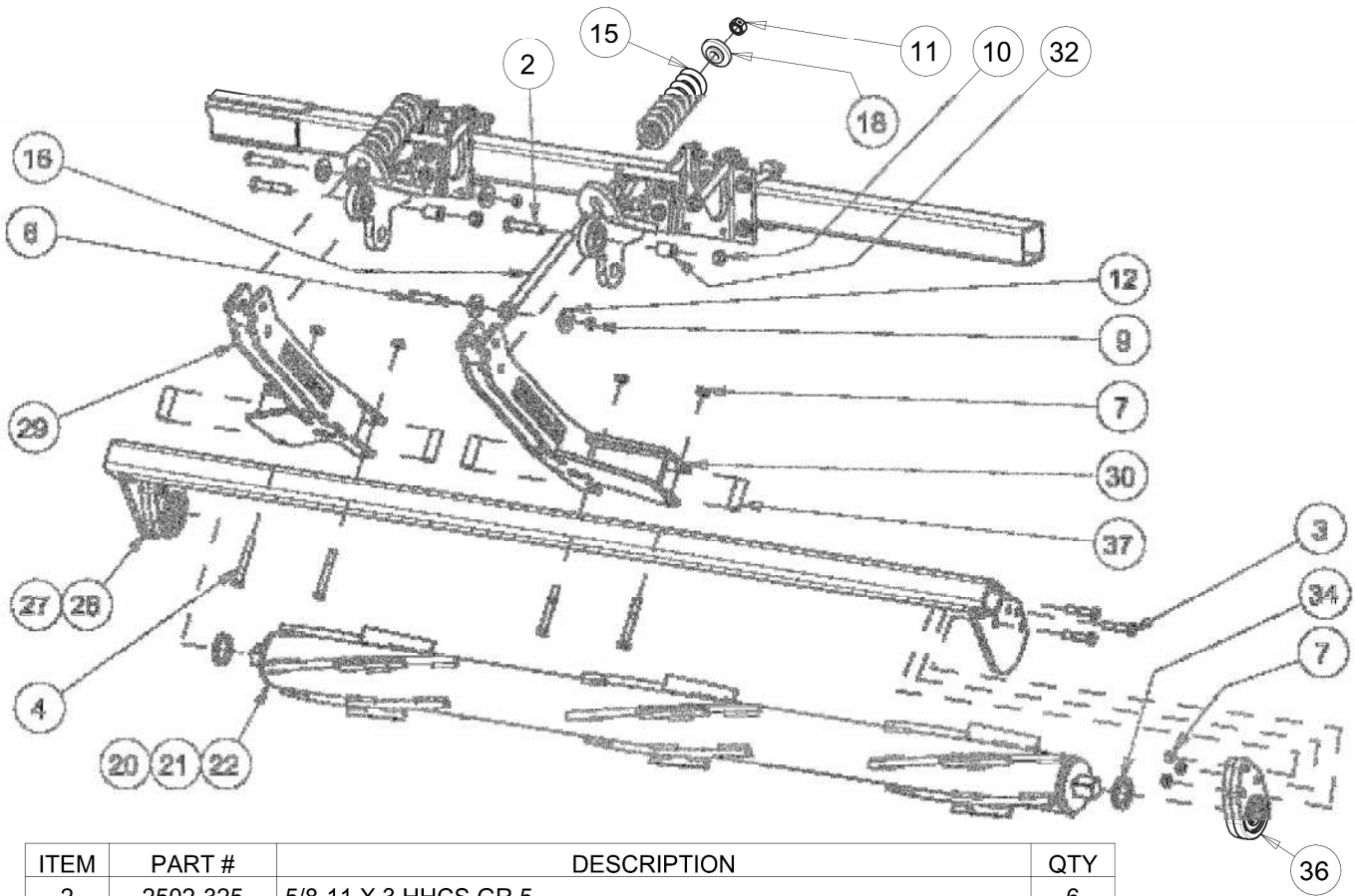
ITEM	PART #	DESCRIPTION	QTY
1	2502-311	1/2-13 X 1-3/4" HHCS GR 8, ZP	44
5	2502-384	5/8-11 X 5-1/2 HHCS GR 8, ZP	20
7	2520-357	1/2-13 LOCK HEX NUT, GR A, ZP	24
8	2520-361	1/2-13 FLANGE WHZLCK HEX NUT GR 5, ZP	20
10	2520-459	5/8-11 LOCK HEX NUT, GR B, ZP	26
13	2526-453	5/8 STANDARD FLATWASHER, ZP	64
17	2570-465	7GA. HAIRPIN COTTER, ZP	12
23	5000-246	AGCO 3300 CENTER OFFSET MOUNT	1
24	5000-135	ARM MOUNT AGCO ASSEMBLY	6
	2528-369	1.380 OD X 1.00 ID X 1.25 L BEARING SLEEVE	
25	5000-251	AGCO 3300 RH OFFSET MOUNT	2
26	5000-252	AGCO 3300 LH OFFSET MOUNT	2
31	5000-309	SUPPORT STRAP	10
33	5000-319	MOUNT STRAP 3"	6
35	5000-323	LOCK UP PIN, ZP	6
38	5000-400	OFFSET CLAMP BRACKET	2

5000-035

PARTS IDENTIFICATION

5000-035

8 ROW STALK DEV AGCO



ITEM	PART #	DESCRIPTION	QTY
2	2502-325	5/8-11 X 3 HHCS GR 5	6
3	2502-353	1/2-13 X 2-1/2 HHCS GR 8, ZP	18
4	2502-365	1/2-13 X 3-3/4 HHCS GR 5, ZP	12
6	2510-121	5/8" DIA SHLDR, 2-1/4" L SHLDR, 1/2-13	6
7	2520-357	1/2-13 LOCK HEX NUT, GR A, ZP	30
8	2520-384	WU 1/2-13 HEX LOCKNUT, JAM, ZP	6
10	2520-459	5/8-11 LOCK HEX NUT, GR B, ZP	26
11	2520-515	3/4-10 LOCK HEX NUT, ZP	6
12	2526-449	5/8ID X 1-3/4 OD X 1/4 WASHER	12
15	2550-709	1/2 WIRE 2-1/2 OD X 1-1/2 ID X 7-1/4 COMP SPRING	6
16	2570-126	3/4 X 10 EYEBOLT, ZP	6
18	2975-302	2975 SPRING BUSHING "PAINTED"	6
20	5000-203A	ROLLER W.A. 48"	1
21	5000-211A	ROLLER W.A., LH 76" (SHOWN)	1
22	5000-212A	ROLLER W.A., RH 76"	1
27	5000-254	PIVOT ARM W.A., 3 ROW ROLLER, CENTERED	2
28	5000-255	PIVOT ARM W.A., RH	1
29	5000-256	OVER BEARING ARM 19" LH	3
30	5000-258	OVER BEARING ARM 18" RH	3
32	5000-318	PIVOT BUSHING	6
34	5000-322	SHIM WASHER, ZP	6
36	5000-355	1-1/4 DISC HARROW BEARING, W209PPB5, HD ASSY	6
	2550-059	BEARING - SERVICE PART	
37	5000-378	SPACER BUSHING	12

5000-035

TROUBLESHOOTING

ISSUE	CAUSE	CORRECTIVE ACTION
Residue Plugging	<ol style="list-style-type: none"> 1. Incorrect Head Angle 2. Roller Mount Tube incorrectly installed 3. Pivot arm orientation incorrect 4. Bearing installed incorrectly 5. Intermeshing snapping rolls 6. Too much Spring Tension 	<ol style="list-style-type: none"> 1. Adjust head angle to 23 – 25 degrees (see page 12) 2. Make sure the Bearing Support Tab is on the backside of the Roller Arm Mount Tube 3. Reposition the pivot arm so that it offsets under the snout & not under the row 4. Make sure the side of the bearing that protrudes outside of the cast housing is facing toward the roller (each roller should spin freely by hand) 5. Order the 5000-080 Set Back Kit (order 2 per roller) 6. Back the nut off of the push rod until the nut is flush
Stalk aren't "devastated"	<ol style="list-style-type: none"> 1. Insufficient spring down pressure 2. Operating corn head too high 	<ol style="list-style-type: none"> 1. Tighten push rod nut on spring bushing more 2. Lower corn head until the rollers engage
Corn Head won't fit on head cart	<ol style="list-style-type: none"> 1. Devastators bottom out 2. Roller won't clear cart tire 	<ol style="list-style-type: none"> 1. Adjust top rail & saddles higher on cart 2. Order 5000-082 Lift Kit (raises roller 2")





NOTES



A Tradition of Solutions since 1930

Yetter Farm Equipment Co

PO BOX 358 109 S. McDonough

Colchester, IL 62326-0358

Phone: 309-776-4111

Toll Free: 800-447-5777

Email: info@yetterco.com

For updated models and manuals visit the Yetter website:

www.yetterco.com

© Yetter Farm Equipment Co. All Rights Reserved