



## **3800 SERIES HEAVY DUTY**

### **FOLDING TOOLBAR**

TOOLBAR HINGE IMPROVEMENT KIT

**3800-190 SINGLE FRAME**

**3800-191 DOUBLE FRAME**

2565-986\_REV\_B 01/2026

**YETTER MANUFACTURING CO.**

*FOUNDED 1930*

Colchester, IL 62326-0358

Toll free: 800/447-5777

309/776-3222 (Fax)

Website: [www.yetterco.com](http://www.yetterco.com)

E-mail: [info@yetterco.com](mailto:info@yetterco.com)

**YETTER**

# FOREWORD


You've just joined an exclusive but rapidly growing club.


For our part, we want to welcome you to the group and thank you for buying a Yetter product.


We hope your new Yetter products will help you achieve both goals-increase your productivity and increase your efficiency so that you may generate more profit.


This operator's manual has been designed into four major sections: Foreword, Safety Precautions, Installation Instructions and Parts Breakdown.

This **SAFETY ALERT SYMBOL** indicates important safety messages in the manual. When you see this symbol, be alert to the possibility of **PERSONAL INJURY** and carefully read the message that follows.

 **DANGER:** Indicates an imminently hazardous situation which, if not avoided "will" result in death or serious injury. This signal word is to be limited to the most extreme situations

 **WARNING:** Indicates a potentially hazardous situation which, if not avoided, "could" result in death or serious injury.

 **CAUTION:** Indicates a potentially hazardous situation, which if not avoided, "may" result in minor or moderate injury. It may also be used to alert against unsafe practices.

 **NOTICE:** Indicates information considered important, but not hazard related (e.g., messages relating to property damage).

It is the responsibility of the user to read the operator's manual and comply with the safe and correct operating procedure and to lubricate and maintain the product according to the maintenance schedule in the operator's manual.

The user is responsible for inspecting his machine and for having parts repaired or replaced when continued use of the product would cause damage or excessive wear to the other parts.

It is the user's responsibility to deliver his machine to the Yetter dealer who sold him the product for service or replacement of defective parts, which are covered by the warranty policy.

If you are unable to understand or follow the instructions provided in this publication, consult your local Yetter dealer or contact:

**YETTER MANUFACTURING CO.**

309/776-4111

800/447-5777

309/776-3222 (FAX)

Website: [www.yetterco.com](http://www.yetterco.com)

E-mail: [info@yetterco.com](mailto:info@yetterco.com)



## SAFETY PRECAUTIONS



A brief description of signal words that may be used in this manual:

**DANGER**: Indicates an imminently hazardous situation which, if not avoided “will” result in death or serious injury. This signal word is to be limited to the most extreme situations.

**WARNING**: Indicates a potentially hazardous situation which, if not avoided, “could” result in death or serious injury.

**CAUTION**: Indicates a potentially hazardous situation, which if not avoided, “may” result in minor or moderate injury. It may also be used to alert against unsafe practices.

**NOTICE**: Indicates information considered important, but not hazard related (e.g., messages relating to property damage).

Consult your implement and tractor operator’s manual for correct and safe operating practices. Be aware of towed implement width and allow safe clearance.

Safety decals are placed on the implement to alert the operator and others to the risk of personal injury or unsafe operation during normal operations and servicing.

1. The safety decals must be kept clean and in good condition to ensure that they are legible.
2. Safety decals must be replaced if they are missing or illegible.
3. When components are replaced during repair or servicing, check that the new components include the necessary safety signs.
4. Replacement safety decals may be obtained from your local dealer.



### WARNING

Read these instructions carefully to acquaint yourself with the Equipment. Working with unfamiliar equipment can lead to accidents.

Never park the equipment on a steep incline or leave the equipment running unattended.

Never clean, lubricate or adjust a machine that is in motion.

Always check that straps are secure.

Make sure latches are in pinned position when moving equipment.

Do not allow children to operate this equipment.

Do not allow riders on the equipment, trailer and/or pick-up.

Use speed and caution dictated by the terrain being traversed. Do not operate on any slope steep enough to cause tipping or loss of control.

Read and understand the operator’s manual and require all other persons who will operate the equipment to do the same.

If operating on public roadways, where legal, be certain all lighting is operating properly and observe all traffic laws.

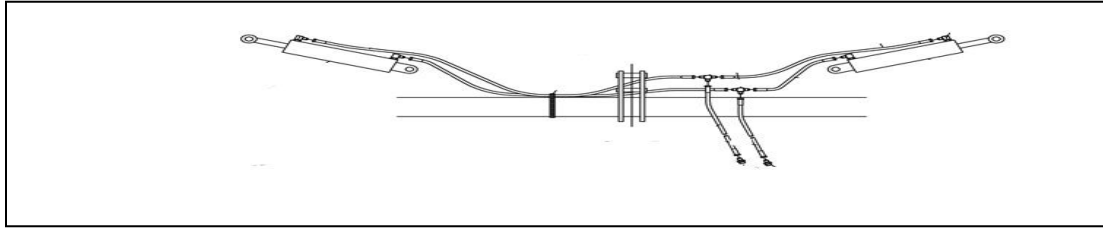
Beware of increased stopping distances and control effort when operating with implements attached.

Be familiar with all controls and be prepared to stop equipment quickly in an emergency.

**FAILURE TO HEED MAY RESULT IN PERSONAL INJURY OR DEATH.**

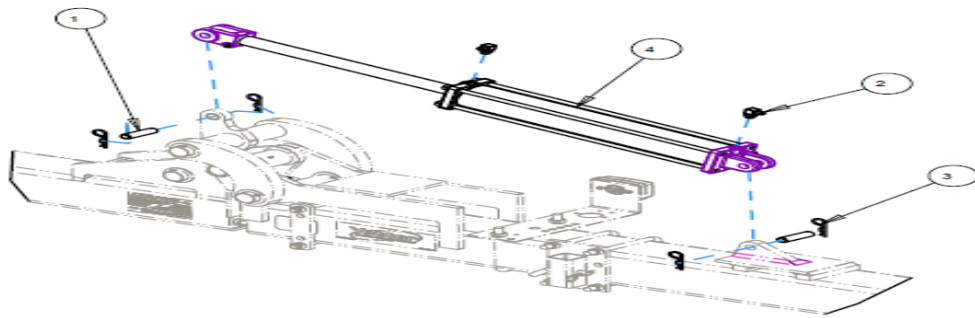


**CAUTION STAND CLEAR OF FOLDING WINGS!**



**3800 SINGLE FRAME TOOLBAR**

ITEM	PART NO.	DESCRIPTION	QTY
1	2515-172	CYLINDER CLEVIS PIN, ZP	4
2	2515-330	90 DEG., 3/4 SAE TO -6 JIC	4
3	2570-465	7 GA. HAIRPIN COTTER ZP	8
4	3841-338	4 X 24 CYLINDER	2

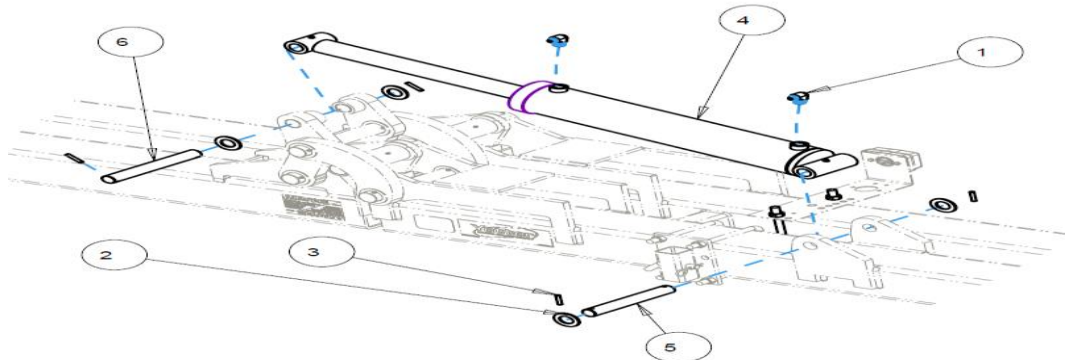


**3800 DOUBLE FRAME TOOLBAR  
MANUFACTURED 07-2012 TO 07-2025**

ITEM	PART NO.	DESCRIPTION	QTY
1	2515-830	2501-06-12 90 DEG. FITTING (RESTRICTED)	4
2	2527-566	1.5" TYPE B NARROW WASHER	8
3	2530-212	3/8 X 2 ROLL PIN ZP	8
4	3841-300	5 X 24 HD WELDED HYDRAULIC CYLINDER	2
5	3841-301	CYLINDER PIN, BASE END	2
6	3841-302	CYLINDER PIN, ROD END	2

**MANUFACTURED 02-2026 TO PRESENT**

ITEM	PART NO.	DESCRIPTION	QTY
1	2515-857	90 DEGREE ELBOW RESTRICTED -6 JIC MALE TO -12 ORB MALE	4
2	2527-566	1.5 INCH WASHER TYPE B NARROW	8
3	2530-212	3/8 X 2 ROLL PIN	8
4	3841-300A	5 X 24 WELDED CYLINDER	2
	2515-858	SEAL KIT	1
5	3841-301	CYLINDER PIN BASE END	2
6	3841-302	CYLINDER PIN ROD END	2

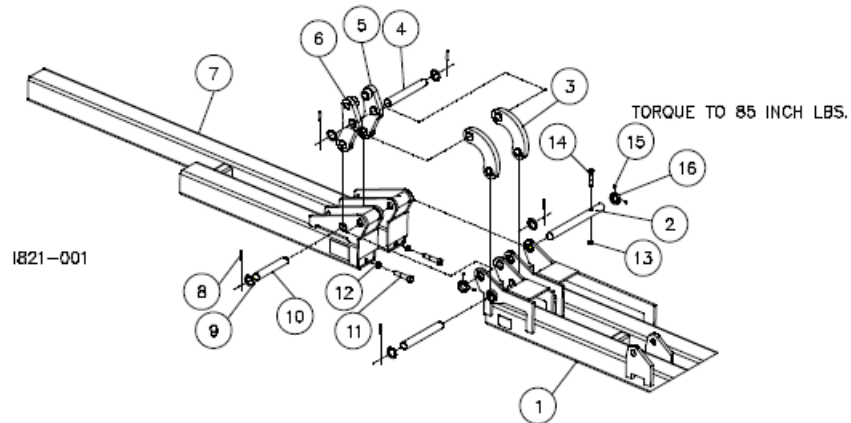


# PARTS IDENTIFICATION

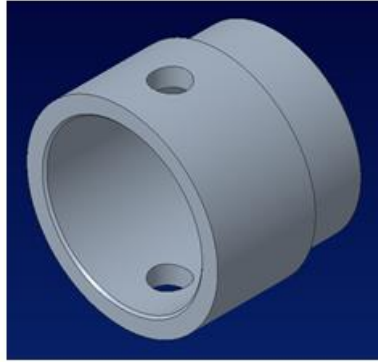
## MANUFACTURED 07-2012 TO 12-2020

### 3800 HINGE ASSEMBLY

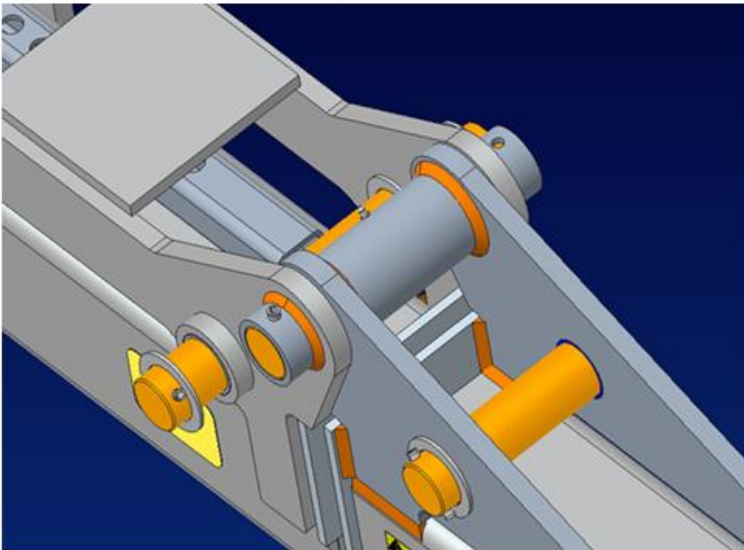
DET	QTY	PART NO.	DESCRIPTION
1	1	3831-207	31' CENTER SECTION
	4	3841-313	LNER, LINK BASE
	8	3841-324	LNER, HINGE PLATE
1	1	3841-216	41' CENTER SECTION
	4	3841-313	LNER, LINK BASE
	8	3841-324	LNER, HINGE PLATE
2	2	3841-303	HINGE PIN
3	2	3841-154	SHORT LINK ASSEMBLY
	1	3841-306	SHORT LINK
4	2	3841-313	LNER, LINK BASE
	4	3841-304	LNK PIN, LONG 14.813"
5	2	3841-205	CYLINDER LINK RIGHT HAND
	2	3841-313	LNER, LINK BASE
	1	3841-316	LNER, ROD END
6	2	3841-204	CYLINDER LINK LEFT HAND
	2	3841-313	LNER, LINK BASE
	1	3841-316	LNER, LINK BASE
7	1	3831-201	L.H. WING
	2	3841-324	LNER, HINGE PLATE
	1	3831-202	R.H. WING (SHOWN)
	2	3841-324	LNER, HINGE PLATE
	1	3841-218	R.H. WING (SHOWN)
	2	3841-324	LNER, HINGE PLATE
	1	3841-217	L.H. WING
	2	3841-324	LNER, HINGE PLATE
	1	3841-316	LNER, ROD END
	8	12	2530-208
9	12	2527-567	2" WASHER
10	2	3841-305	LNK PIN, SHORT 11.625"
11	4	2502-604	7/8 9X31-1THD HD TPBLT G2Z
12	4	2520-543	7/8 -9 JAM HEX NUT ZP
13	2	2520-515	3/4-10 LOCK HEX NUT ZP
14	2	2502-404	3/4-10 X 4 HHCS GR. 5 ZP
15	2	3841-340	RETAINING COLLAR
16	4	2503-201	1/4-20 X 1/2 SET SCREW



## 3800-318 HINGE SLIP-FIT BUSHING

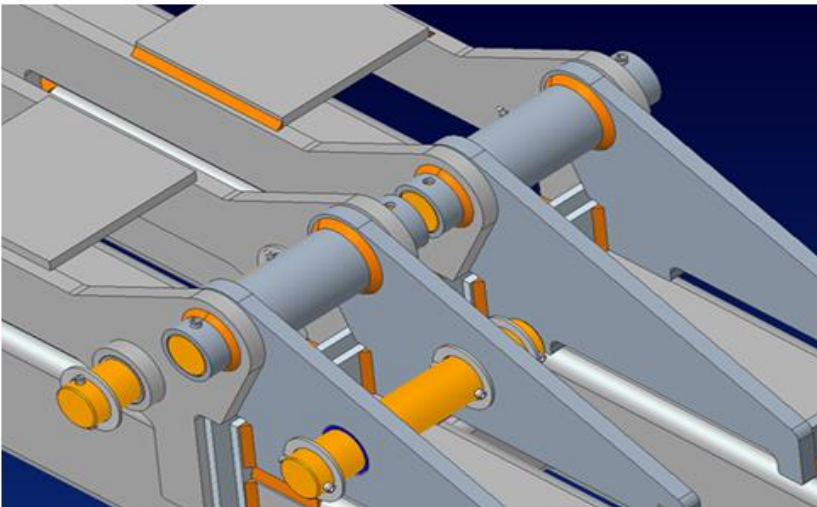


### Single Frame Hinge



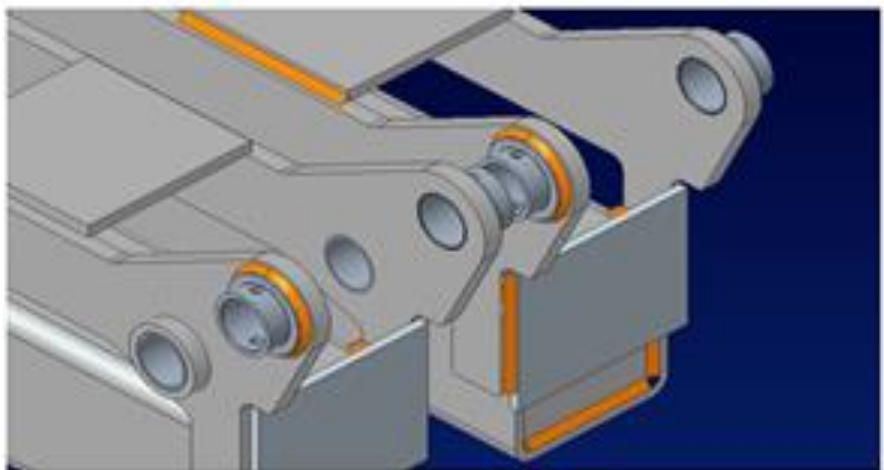
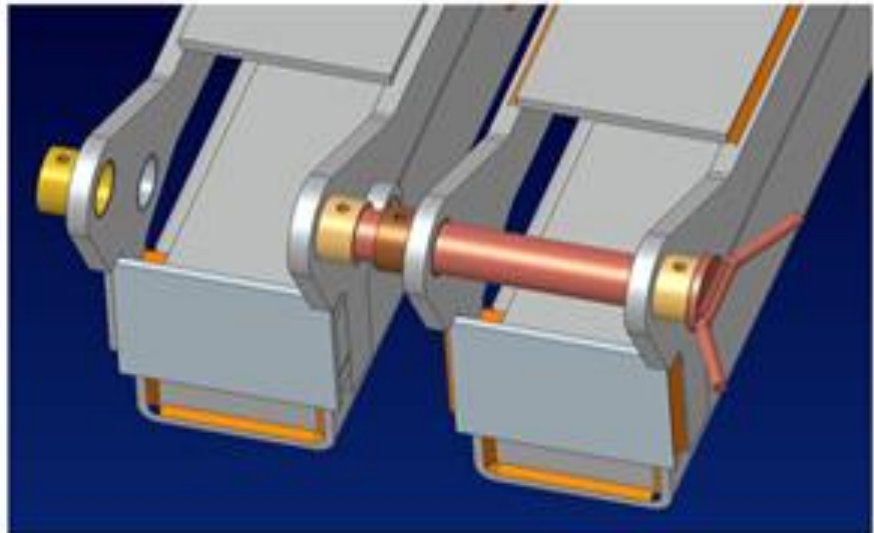
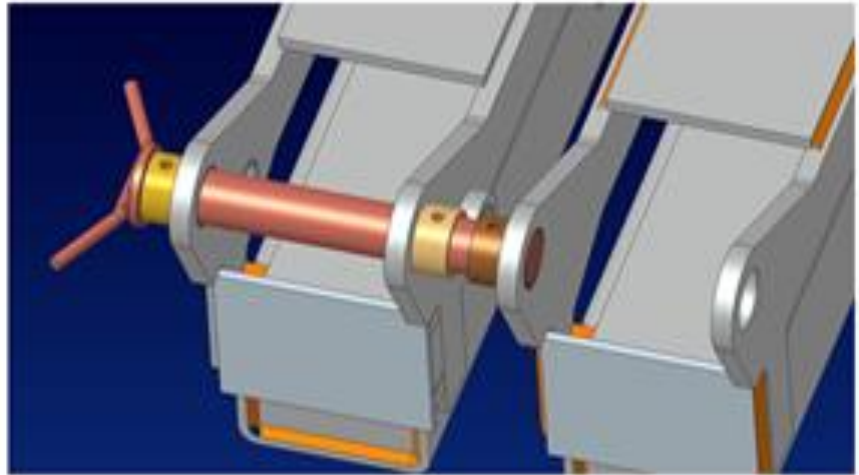
**WELD THE (4) 3800-318 SLIP-FIT BUSHINGS TO THE MAIN FRAME TOOLBAR HINGE PLATES USING A 1/4" WELD ALL THE WAY AROUND**

### Double Frame Hinge



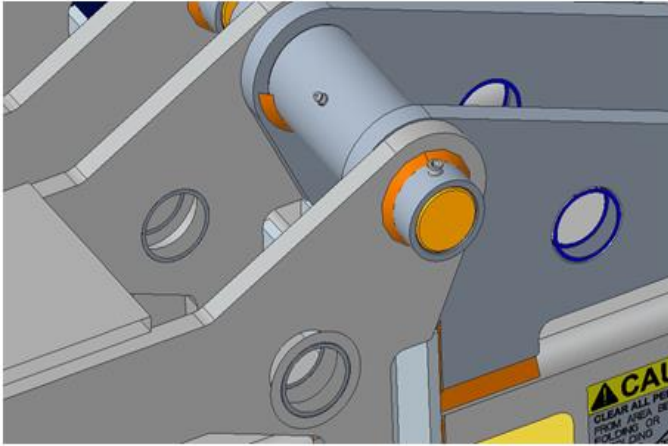
**WELD THE (8) 3800-318 SLIP FIT BUSHINGS TO THE MAIN FRAME TOLLBAR HINGE PLATES USING A 1/4" WELD ALL THE WAY AROUND**

**USE THE ORIGINAL  
HINGE PIN TO  
POSITION THE  
3800-318 SLIP-FIT  
BUSHINGS FOR  
PROPER  
ALIGNMENT  
DURING THE  
WELDING  
PROCEDURE.**



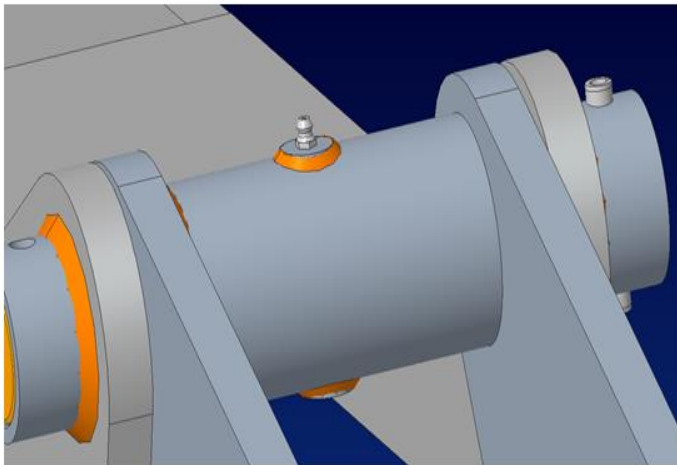
- Common Components

- Drill front wing hinge bushing at roughly 45° and insert 2533-110 zerk
- Double frame toolbars will need plugs welded in to bolt hole in rear wing hinge bushing
  - One will have hole drilled for another 2533-110 zerk



### FRONT HINGE BUSHING

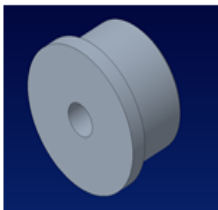
USING A 15/64" DRILL BIT, DRILL A HOLE AT ROUGHLY 45 DEGREES AND INSERT A 2533-110 GREASE ZERK



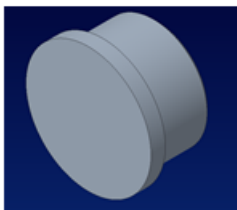
### REAR HINGE BUSHING

TOP HOLE: WELD THE 3800-319 PLUG WITH HOLE USING .13" WELD ALL THE WAY AROUND. INSTALL THE 2533-110 GREASE ZERK

BOTTOM HOLE: WELD THE 3800-320 PLUG USING .13" WELD ALL THE WAY AROUND.

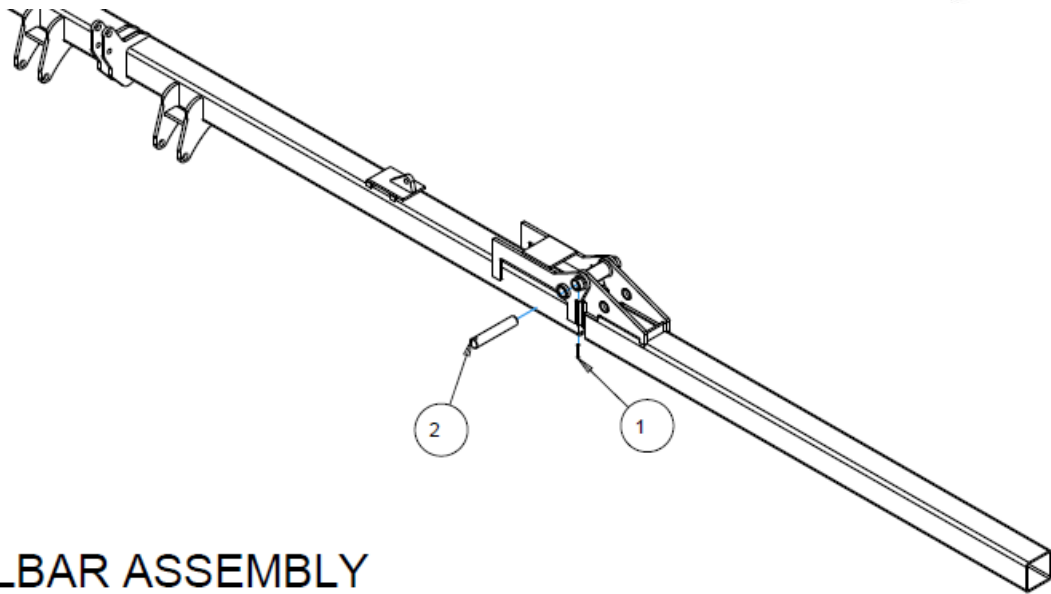
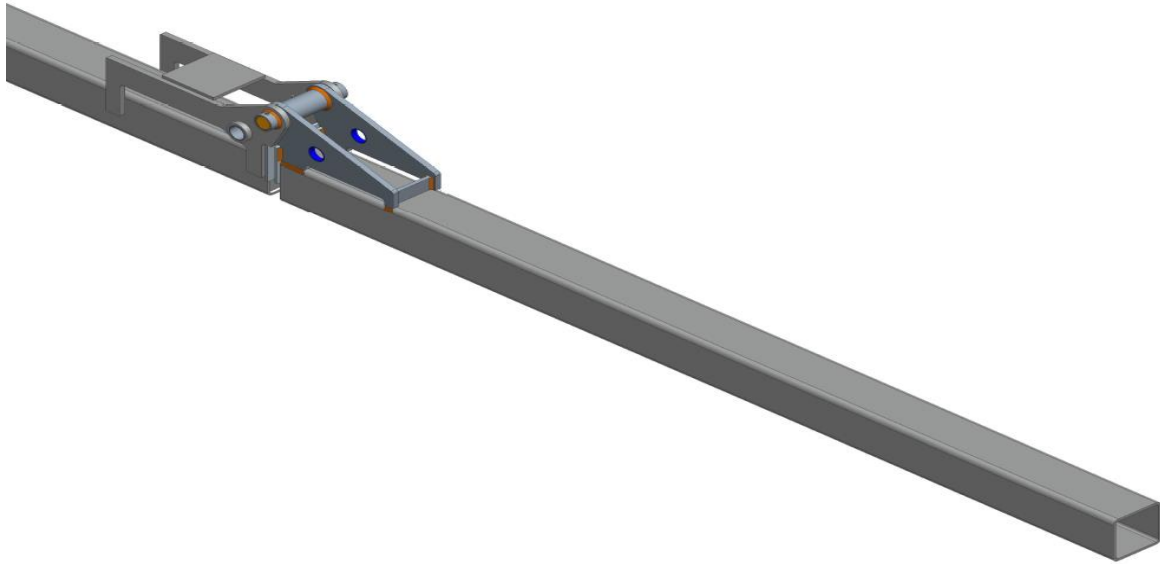


**3800-319 PLUG WITH GREASE ZERK HOLE**



**3800-320 PLUG**

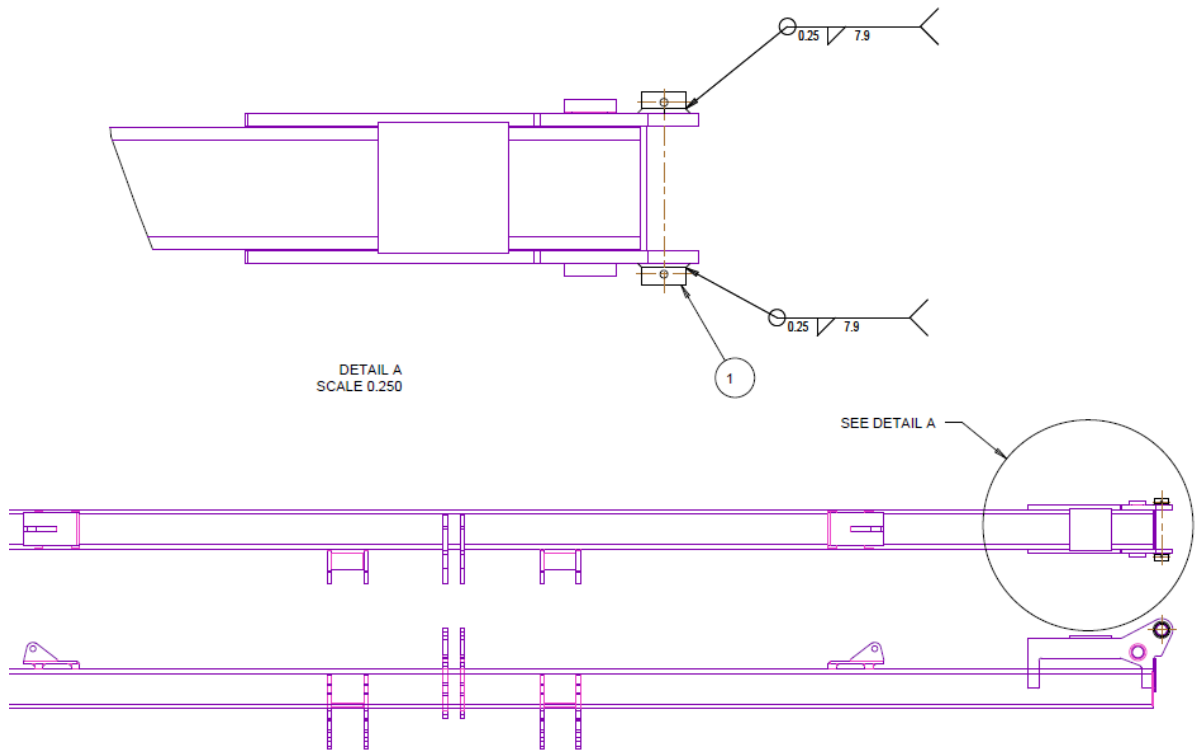
## 3800 SINGLE FRAME



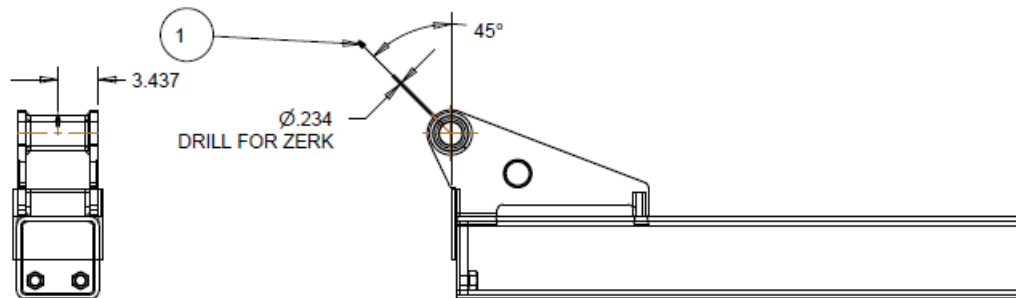
## TOOLBAR ASSEMBLY

ITEM	PART NO.	DESCRIPTION	QTY
1	2530-221	7/16 X 3 ROLL PIN ZP	2
2	3841-330	LINK PIN, UPPER	2

# 3800 SINGLE FRAME



ITEM	PART NO.	DESCRIPTION	QTY
1	3800-318	HINGE SLIP-FIT BUSHING	4

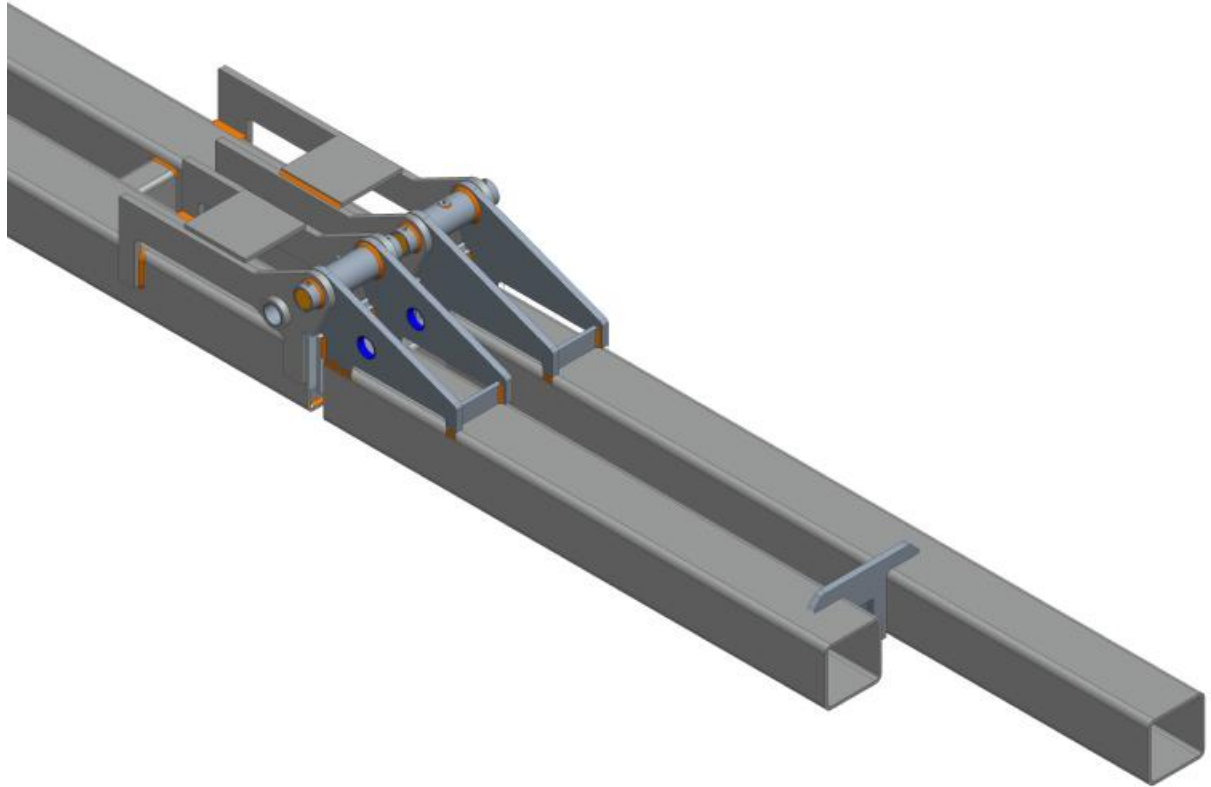


SCALE 0.125

## GREASE ZERK PLACEMENT IN WING HINGE

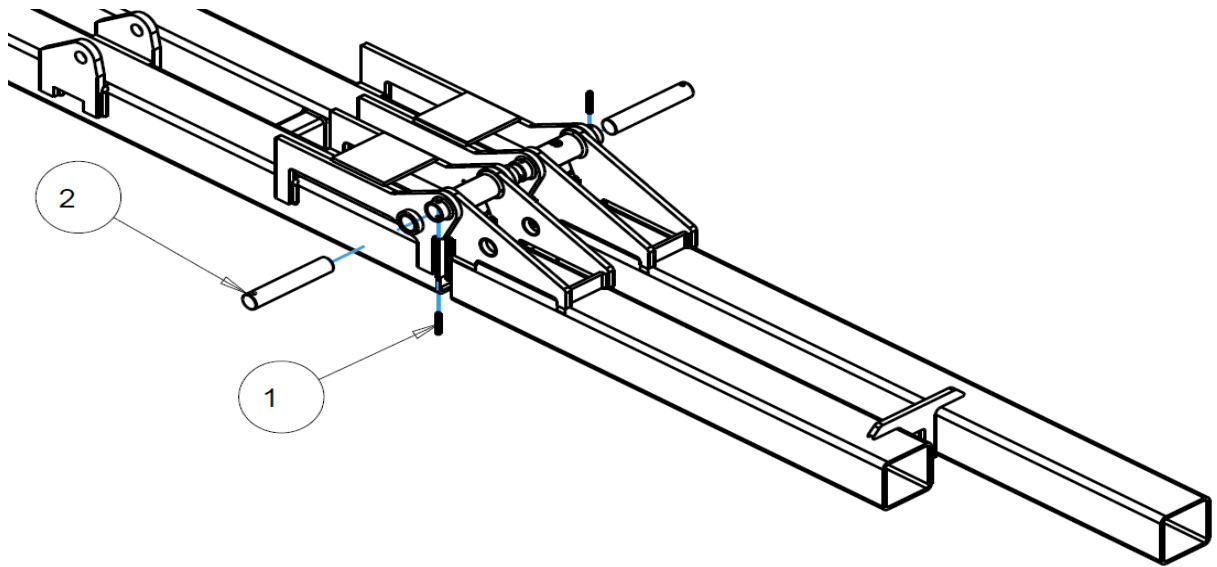
ITEM	PART NO.	DESCRIPTION	QTY
1	2533-110	1/4-28 ZERK STRAIGHT SELF-TAP	1

## 3800 DOUBLE FRAME

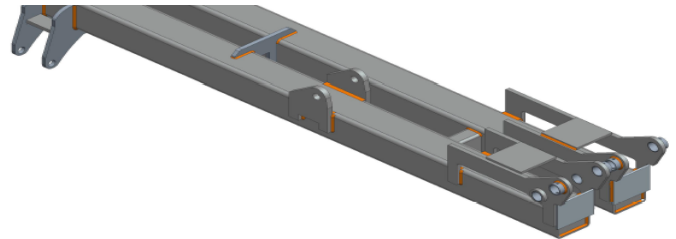
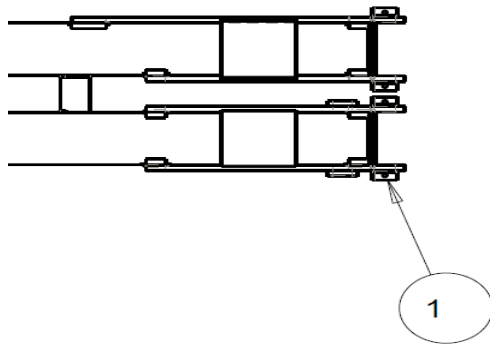


ITEM	PART NO.	DESCRIPTION	QTY
1	2530-221	7/16 X 3 ROLL PIN ZP	4
2	2533-110	1/4-28 ZERK STRAIGHT SELF-TAP	4
3	3800-207	HINGE BUSHING LOCATING FIXTURE, RH	1
4	3800-208	HINGE BUSHING LOCATING FIXTURE, LH	1
5	3800-209	ALIGNMENT PIN, W.A.	1
6	3800-318	HINGE SLIP-FIT BUSHING	8
7	3800-319	PLUG W/ ZERK HOLE	2
8	3800-320	PLUG	2
9	3841-330	LINK PIN, UPPER	4

# 3800 DOUBLE FRAME



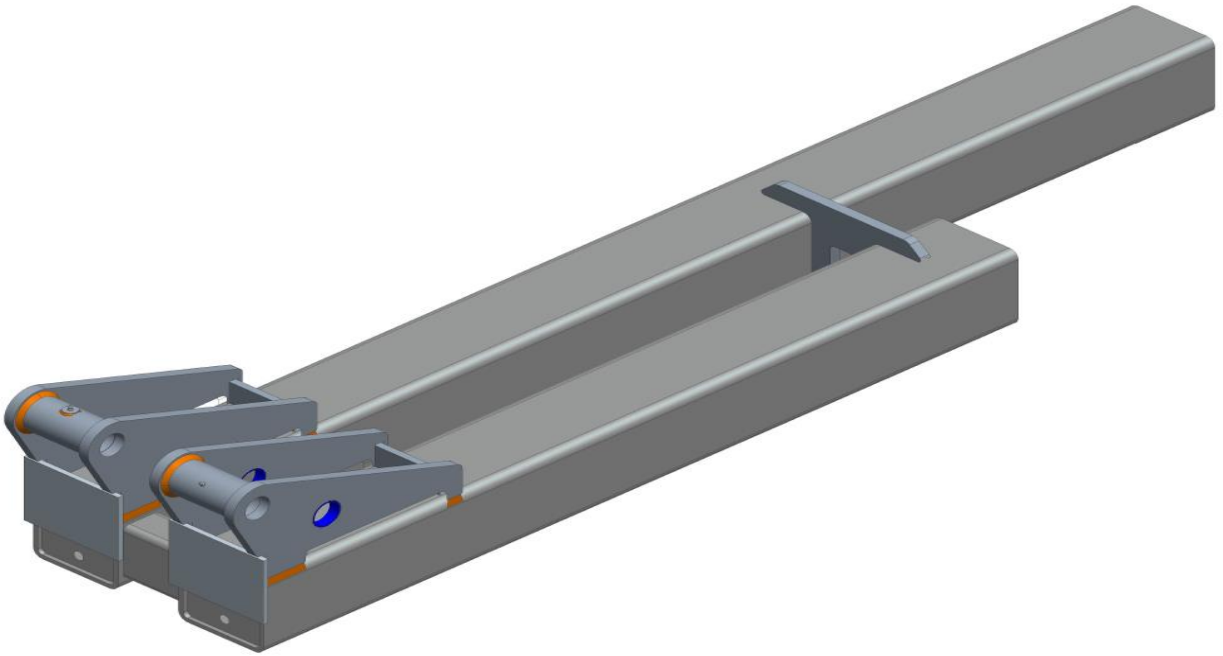
ITEM	PART NO.	DESCRIPTION	QTY
1	2530-221	7/16 X 3 ROLL PIN ZP	4
2	3841-330	LINK PIN, UPPER	4



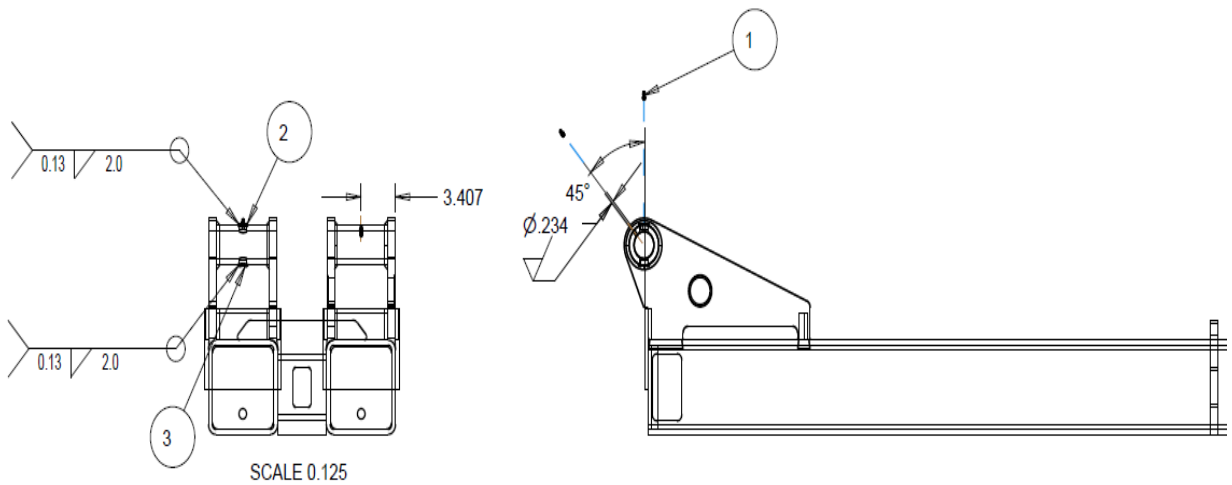
ITEM	PART NO.	DESCRIPTION	QTY
1	3800-318	HINGE SLIP-FIT BUSHING	8

# 3800 DOUBLE FRAME

LEFT HAND

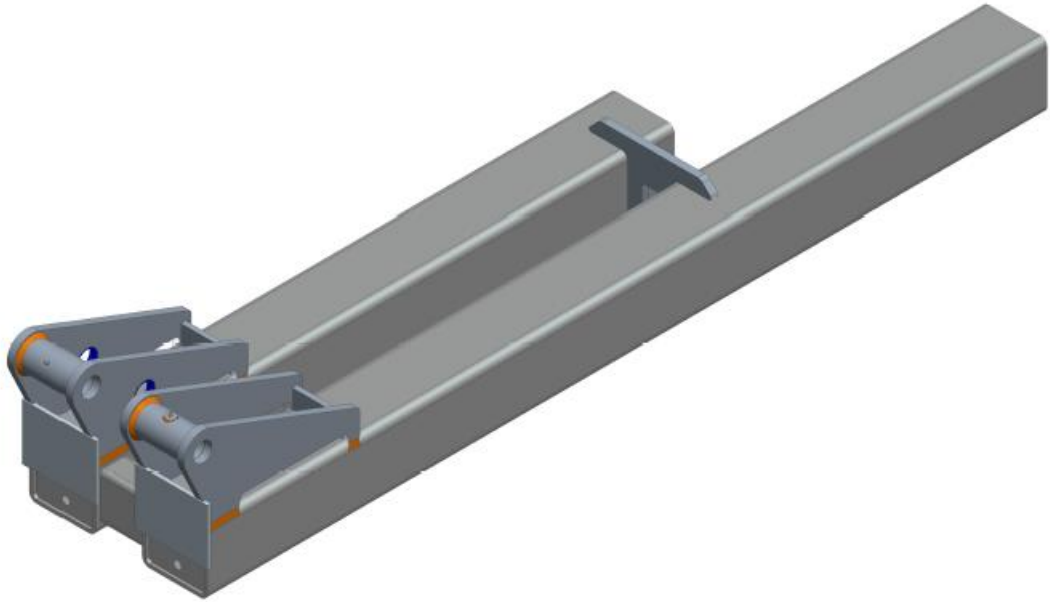


ITEM	PART NO.	DESCRIPTION	QTY
1	2533-110	1/4-28 ZERK STRAIGHT SELF-TAP	2
2	3800-319	PLUG W/ ZERK HOLE	1
3	3800-320	PLUG	1

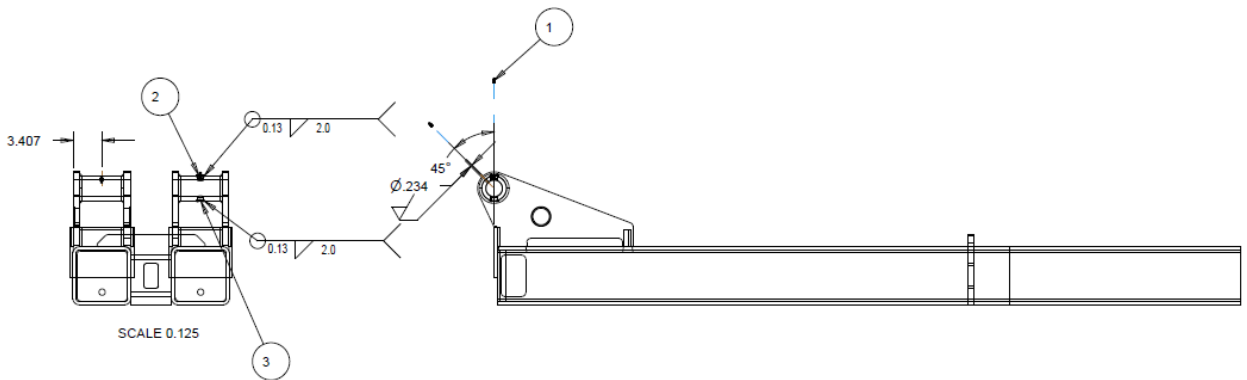


# 3800 DOUBLE FRAME

RIGHT HAND



ITEM	PART NO.	DESCRIPTION	QTY
1	2533-110	1/4-28 ZERK STRAIGHT SELF-TAP	2
2	3800-319	PLUG W/ ZERK HOLE	1
3	3800-320	PLUG	1



# NOTES



A Tradition of Solutions since 1930

Yetter Farm Equipment Co

PO BOX 358 109 S. McDonough

Colchester, IL 62326-0358

Phone: 309-776-4111

Toll Free: 800-447-5777

Email: [info@yetterco.com](mailto:info@yetterco.com)

For updated models and manuals visit the Yetter website:

[www.yetterco.com](http://www.yetterco.com)

© Yetter Farm Equipment Co. All Rights Reserved

2565-986\_REV\_B • 01/26