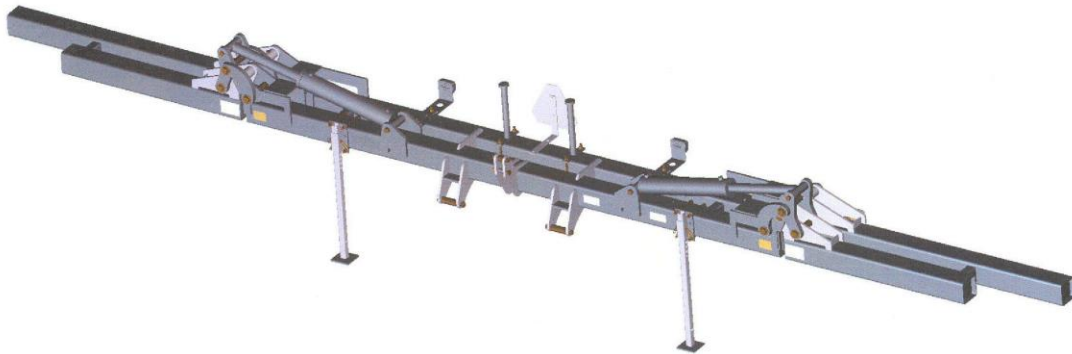




3800 SERIES HEAVY DUTY FOLDING TOOLBAR

2565-772_REV_M . 03/2026
OPERATOR'S MANUAL
PART IDENTIFICATION



YETTER MANUFACTURING CO.

FOUNDED 1930

Colchester, IL 62326-0358

Toll free: 800/447-5777

309/776-3222 (Fax)

Website: www.yetterco.com

E-mail: info@yetterco.com

YETTER


FOREWORD


You've just joined an exclusive but rapidly growing club.
For our part, we want to welcome you to the group and thank you for buying a Yetter product.


We hope your new Yetter products will help you achieve both goals-increase your productivity and increase your efficiency so that you may generate more profit.


This operator's manual has been designed into four major sections: Foreword, Safety Precautions, Installation Instructions and Parts Breakdown.

This **SAFETY ALERT SYMBOL** indicates important safety messages in the manual. When you see this symbol, be alert to the possibility of **PERSONAL INJURY** and carefully read the message that follows.

 **DANGER:** Indicates an imminently hazardous situation which, if not avoided "will" result in death or serious injury. This signal word is to be limited to the most extreme situations

 **WARNING:** Indicates a potentially hazardous situation which, if not avoided, "could" result in death or serious injury.

 **CAUTION:** Indicates a potentially hazardous situation, which if not avoided, "may" result in minor or moderate injury. It may also be used to alert against unsafe practices.

 **NOTICE:** Indicates information considered important, but not hazard related (e.g., messages relating to property damage).

It is the responsibility of the user to read the operator's manual and comply with the safe and correct operating procedure and to lubricate and maintain the product according to the maintenance schedule in the operator's manual.

The user is responsible for inspecting his machine and for having parts repaired or replaced when continued use of the product would cause damage or excessive wear to the other parts.

It is the user's responsibility to deliver his machine to the Yetter dealer who sold him the product for service or replacement of defective parts, which are covered by the warranty policy.

If you are unable to understand or follow the instructions provided in this publication, consult your local Yetter dealer or contact:

YETTER MANUFACTURING CO.

309/776-4111

800/447-5777

309/776-3222 (FAX)

Website: www.yetterco.com

E-mail: info@yetterco.com

WARRANTY POLICY

Yetter Manufacturing warrants all products manufactured and sold by it against defects in material. This warranty being expressly limited to replacement at the factory of such parts or products as will appear to be defective after inspection. This warranty does not obligate the Company to bear cost of labor in replacement of parts. It is the policy of the company to make improvements without incurring obligations to add them to any unit already sold. No warranty is made or authorized to be made, other than herein set forth. This warranty is in effect for one year after purchase.

Model Number: _____

Serial Number: _____

Dealer : _____

The serial and model numbers are located on the top of the left hitch plate.

Yetter Manufacturing warrants its own products only and cannot be responsible for damage to equipment on which mounted.



SAFETY PRECAUTIONS



A brief description of signal words that may be used in this manual:

DANGER: Indicates an imminently hazardous situation which, if not avoided “will” result in death or serious injury. This signal word is to be limited to the most extreme situations.

WARNING: Indicates a potentially hazardous situation which, if not avoided, “could” result in death or serious injury.

CAUTION: Indicates a potentially hazardous situation, which if not avoided, “may” result in minor or moderate injury. It may also be used to alert against unsafe practices.

NOTICE: Indicates information considered important, but not hazard related (e.g., messages relating to property damage).

Consult your implement and tractor operator’s manual for correct and safe operating practices. Be aware of towed implement width and allow safe clearance.

Safety decals are placed on the implement to alert the operator and others to the risk of personal injury or unsafe operation during normal operations and servicing.

1. The safety decals must be kept clean and in good condition to ensure that they are legible.
2. Safety decals must be replaced if they are missing or illegible.
3. When components are replaced during repair or servicing, check that the new components include the necessary safety signs.
4. Replacement safety decals may be obtained from your local dealer.



WARNING

Read these instructions carefully to acquaint yourself with the Equipment. Working with unfamiliar equipment can lead to accidents.

Never park the equipment on a steep incline or leave the equipment running unattended.

Never clean, lubricate or adjust a machine that is in motion.

Always check that straps are secure.

Make sure latches are in pinned position when moving equipment.

Do not allow children to operate this equipment.

Do not allow riders on the equipment, trailer and/or pick-up.

Use speed and caution dictated by the terrain being traversed. Do not operate on any slope steep enough to cause tipping or loss of control.

Read and understand the operator’s manual and require all other persons who will operate the equipment to do the same.

If operating on public roadways, where legal, be certain all lighting is operating properly and observe all traffic laws.

Beware of increased stopping distances and control effort when operating with implements attached.

Be familiar with all controls and be prepared to stop equipment quickly in an emergency.

FAILURE TO HEED MAY RESULT IN PERSONAL INJURY OR DEATH.

TABLE OF CONTENTS

Forward.....pg. 2
 Warranty.....pg. 2
 Safety Information.....pg. 2-3
 Torque Recommendations.....pg. 4
 Assembly Instruction.....pg. 5-7
 Operation.....pg. 8-9
 Parts Identification.....pg. 10-28
 Troubleshooting.....pg. 29

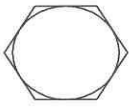
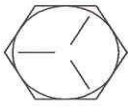

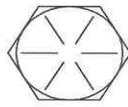


BOLT TORQUE

NOTICE READ THESE INSTRUCTIONS FIRST:

1. Improperly tightened bolts will result in damage, breakage, expense, and down time.
2. Always replace bolts with the specified grade and type.
3. Torque properly before first use of the machine and every 2-4 hours of use until you are sure bolts are staying tight.
4. The chart below is a guide for proper torque. Use it unless a specified torque is called out elsewhere in the manual.
5. Torque is the force you apply to the wrench handle or the cheater bar, times the length of the handle or bar.
6. Use a torque wrench whenever possible.

The following table shows torque in ft. lbs.

BOLT DIA. AND THREADS PER INCH		 OR 	
	GRADE 2	GRADE 5 A-325	GRADE 8
3/8-16	25	35	50
7/16-14	35	55	80
1/2-13	55	85	125
9/16-12	75	125	175
5/8-11	105	170	235
3/4-10	185	305	425
7/8-9	170	445	690
1-8	260	670	1030
1 1/8-7	365	900	1460
1 1/4-7	515	1275	2060
1 3/8-6	675	1675	2700
1 1/2-6	900	2150	3500
1 3/4-5	1410	3500	5600



WARNING: Never work around the toolbar / implement while in a raised position without using safety lockups.

3800 SERIES HYDRAULIC ASSEMBLY

1. Connect the 1/4" x 110" hoses on opposite ports of a "T" fittings. Then connect the hose fittings the restricted 90-degree fittings on the hydraulic cylinders.
2. Connect the 1/4"x 80" hoses to the remaining "T" ports and tighten **ALL** connections.

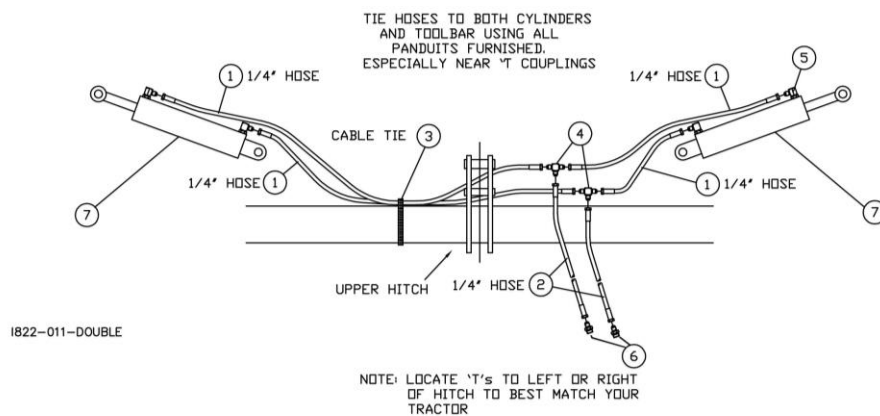
Adapters are provided for the hoses to connect to standard 3/4-16 straight thread quick coupler tips such as Case-IH part no. 1285718* or Deere part no. AR945222.

3. Using the cable ties furnished, tie the outer port hoses to the lower ends of each cylinder and the hose to the toolbar on each side of the "T"s and at 2 to 3 foot intervals between.
4. **IMPORTANT:** Be sure to purge the air from the hydraulic cylinders. This insures smooth wing operation.

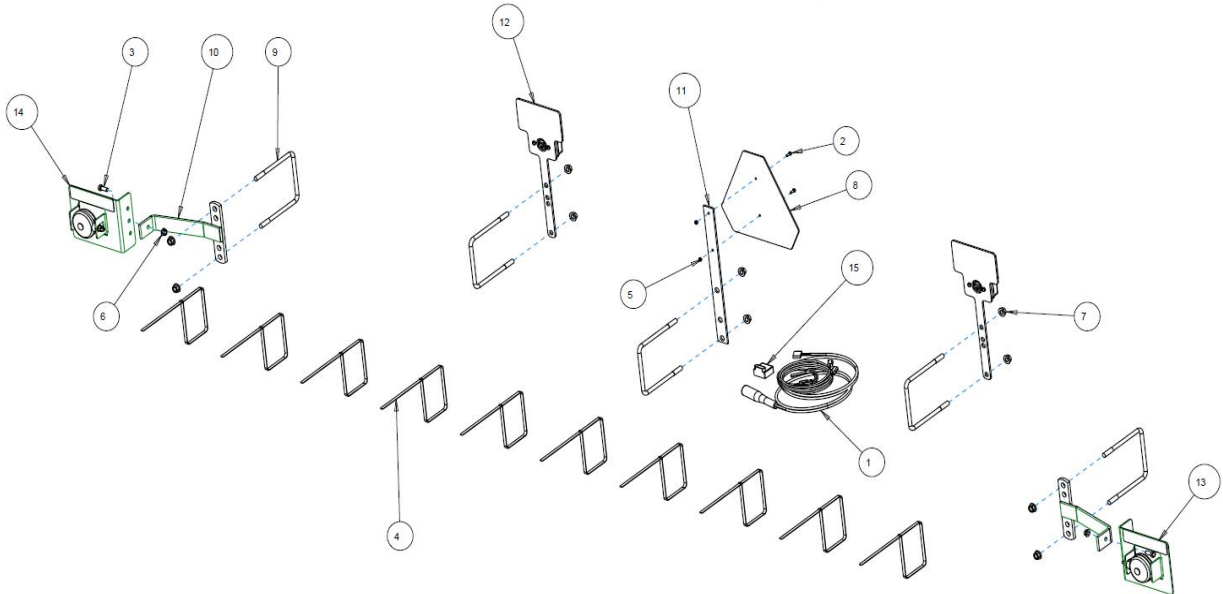


CAUTION STAND CLEAR OF FOLDING WINGS!

ITEM	PART NO.	DESCRIPTION	QTY
1	2515-366	HOSE 1/4" X 110" W/-6 JIC ENDS	4
2	2515-363	HOSE 1/4" X 80" W/-6 JIC ENDS	2
3	2515-405	CABLE TIE 42"	12
4	2515-326	TEE -6/-6/-6 JIC	2
5	2515-830	90 DEG ELBOW RESTRICTED (2025 OLDER MODELS)	4
	2515-857	90 DEGREE RESTRICTED ELBOW -6 JIC MALE TO -12 ORB MALE (2026 NEWER MODELS)	4
6	2515-327	ADAPTER 3/4-16 SAE TO -6 JIC (2025 OLDER MODELS)	2
7	3841-300	5 X 24 HYDRAULIC CYLINDER (2025 OLDER MODELS)	2
	3841-300A	5 X 24 HYDRAULIC CYLINDER (2026 NEWER MODLES)	2
	2515-847	SEAL KIT (2025 OLDER MODELS)	1
	2515-858	SEAL KIT (2026 NEWER MODELS)	1
	3841-301	PIN- BASE	2
	3841-302	PIN- ROD	2
	2527-566	1.5 INCH WASHER	8
	2530-212	3/8 X 2 ROLL PIN	8



SAFETY LIGHTING ASSEMBLY AND PARTS IDENTIFICATION

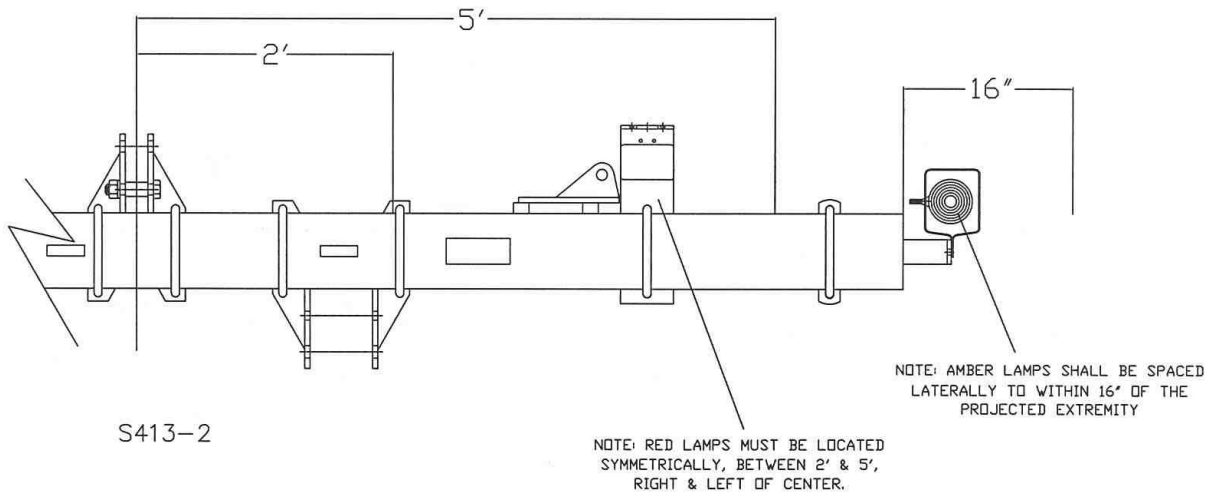


ITEM	PART NO.	DESCRIPTION	QTY
1	1300-446	HARNES LIGHTING	1
2	2502-105	1/4-20 X 3/4 CAP SCREW GRADE 5	2
3	2502-293	1/2-13 X 1.25 CAP SCREW GRADE	2
4	2515-405	CABLE TIE	10
5	2520-152	1/4-20 LOCK HEX NUT	2
6	2520-361	1/2-13 FLANGE HEX NUT GRADE 5	2
7	2520-464	5/8-11 FLANGE HEX NUT GRADE 2	10
8	2570-472	SMV EMBLEM	1
9	2570-626	5/8 X 7 X 9 U-BOLT	5
10	3400-227	LIGHT BRACKET-AMBER	2
11	3400-377	SMV BRACKET	1
12	3800-120	RED LIGHT ASSEMBLY	2
13	3800-121	AMBER LIGHT ASSEMBLY LEFT HAND	1
14	3800-122	AMBER LIGHT ASSEMBLY RIGHT HAND	1
15	RE152269	MODULE - IMPLEMENT TURN SIGNAL	1

SAFETY EQUIPMENT ASSEMBLY

SAFETY LIGHTING

Attach safety lighting to the toolbar frame, install the wiring harness and secure to the frame with the cable ties.



SMV ASSEMBLY

1. Mount SMV emblem as shown with point of triangle up as near operators left of center as possible. Face so emblem is visible from rear of equipment.

OPTIONAL EQUIPMENT:

GAUGE WHEELS

Gauge wheels maintain the frame at a constant level in respect to the ground contour.

Mount each gauge wheel an equal distance from the center of the main frame.



CAUTION: ON 3800 MODELS, BEFORE ACTIVATING FOLDING HINGE CHECK FOR OBSTRUCTIONS, ESPECIALLY CHECK GAUGE WHEEL POSITIONS TO BE SURE THAT GAUGE WHEELS ARE SET TO CLEAR TRACTOR AND OPERATOR.



CAUTION: CLEAR ALL PERSONNEL FROM AREA BEFORE FOLDING OR UN-FOLDING TOOLBAR.



CAUTION: STAND CLEAR OF FOLDING WING!

ATTACHING 3800 TOOLBAR TO TRACTOR



CAUTION: BEFORE ATTACHING TO TRACTOR, BE SURE HITCH PINS ARE COMPLETELY ASSEMBLED TO MATCH YOUR TRACTOR HITCH.



CAUTION: MAKE CERTAIN THAT CENTER LINK AND QUICK COUPLER ARE LOCKED AND LOCK PINS ARE PROPERLY INSTALLED BEFORE MOVING.

Detaching from Tractor



CAUTION: To avoid injury from escaping hydraulic oil under pressure, relieve the pressure in the system before removing hoses from breakaway couplers.



NOTICE: To prevent possible tipping, install parking stands on toolbar before disconnecting from tractor.

FIELD OPERATION

PRE-OPERATION CHECK LIST:

Use this checklist each time you operate the 3800 Toolbar in the field. It will help you obtain satisfactory field operation quickly.

1. Tractor sway blocks in upper position.
2. Center link adjusted for level frame in field operation.
3. Tractor lift links set in lateral float.
4. Hitch pins fastened and correct spacers used.
5. Quick couplers latched.
6. Adequate ballast added to front of tractor.

MAIN FRAME HEIGHT:

Without gauge wheels, set the tractor rockshaft control lever to obtain the desired frame height.

With frame gauge wheels, put the rockshaft control lever all the way forward to lock “it” in the float position, which will enable the frame gauge wheels to maintain the frame at a uniform height from the ground.

LEVELING MAIN FRAME

Adjust lift links and center link as necessary to make frame level and perpendicular to the ground.

Before activating/folding hinge check for obstructions, especially check gauge wheel positions to ascertain proper tractor and cab clearance.

NOTE: If gauge wheels are to be used, make leveling adjustments after gauge wheels are installed.

CLOSED CENTER HYDRAULIC SYSTEM

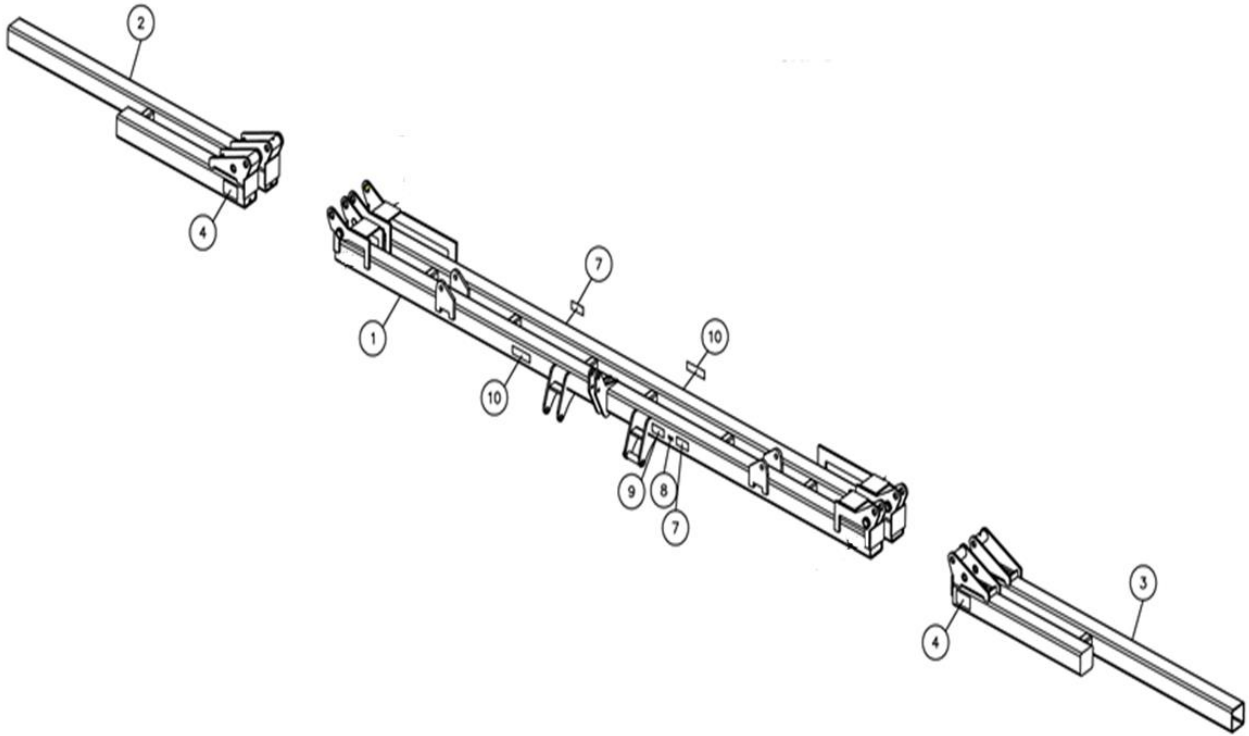
Wing fold hydraulic valve must be in float position to allow the wings to “**flex**” up and down while operating in the field.

Wing fold hydraulic valve must be in neutral position to hold the wings “**rigid**” while operating in the field.



CAUTION: ALWAYS FOLLOW ALL STATE, FEDERAL, AND LOCAL LAWS WHEN TRANSPORTING 3800 TOOLBAR ON PUBLIC ROADS.

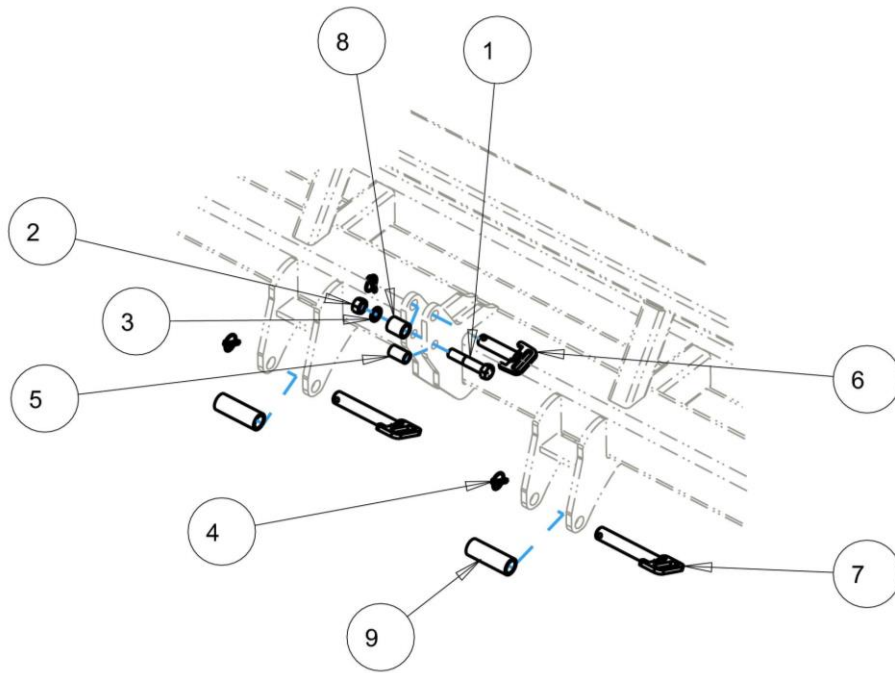
PARTS IDENTIFICATION DECALS



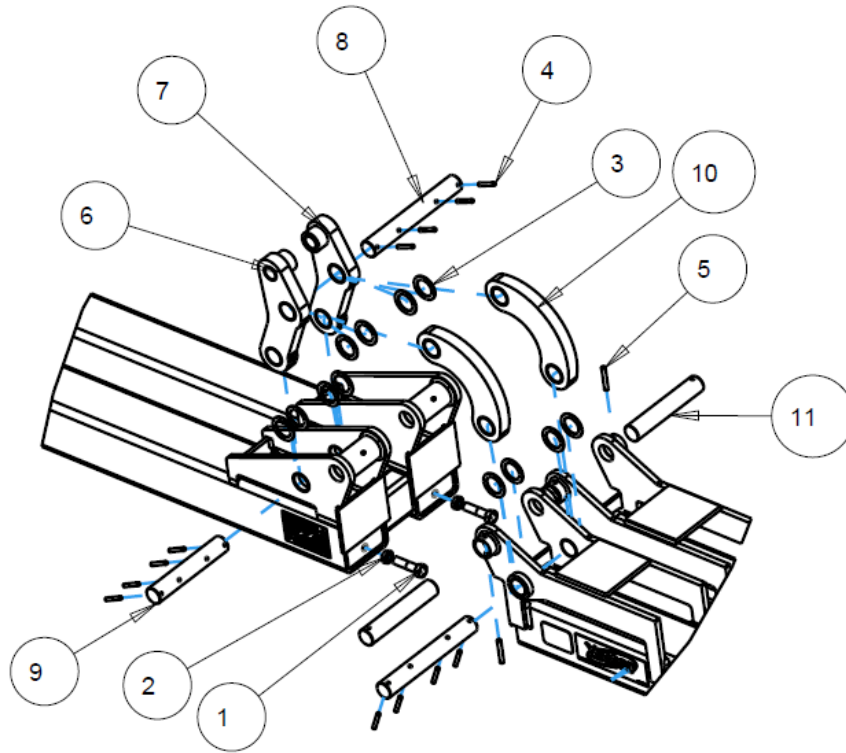
ITEM	QTY	PART NO.	DESCRIPTION
1	1	3831-200	31' CENTER SECTION
	1	3841-200	41' CENTER SECTION
2	1	3831-202	31' RH WING
	1	3841-201	41' RH WING
3	1	3831-201	31' LH WING
	1	3841-202	41' LH WING
4	2	2565-159	FOLDING WING CAUTION DECAL
7	2	2565-087	3831 DECAL
	2	2565-086	3841 DECAL
8	1	2565-466	PRODUCT ID PLATE
9	1	2565-163	PARKING DECAL
10	2	2565-058	YETTER EQUIPMENT DECAL

PARTS IDENTIFICATION

ITEM	PART NO.	DESCRIPTION	QTY
1	2502-770	1-8 X 5 CAP SCREW GRADE 5 (OPTIONAL)	1
2	2520-555	1-8 HEX NUT (OPTIONAL)	1
3	2525-550	1" LOCKWASHER (OPTIONAL)	1
4	2570-454	KLIK PIN	3
5	3400-312	UPPER HITCH SPACER (OPTIONAL) 1.315" OD	1
6	3560-206	UPPER HITCH PIN	1
7	3560-207	LOWER HITCH PIN	2
8	3560-303	UPPER HITCH BUSHING 1.75" OD	1
9	3560-304	BUSHING 2" OD X 1.50" ID X 5.625" LONG	2



PARTS IDENTIFICATION



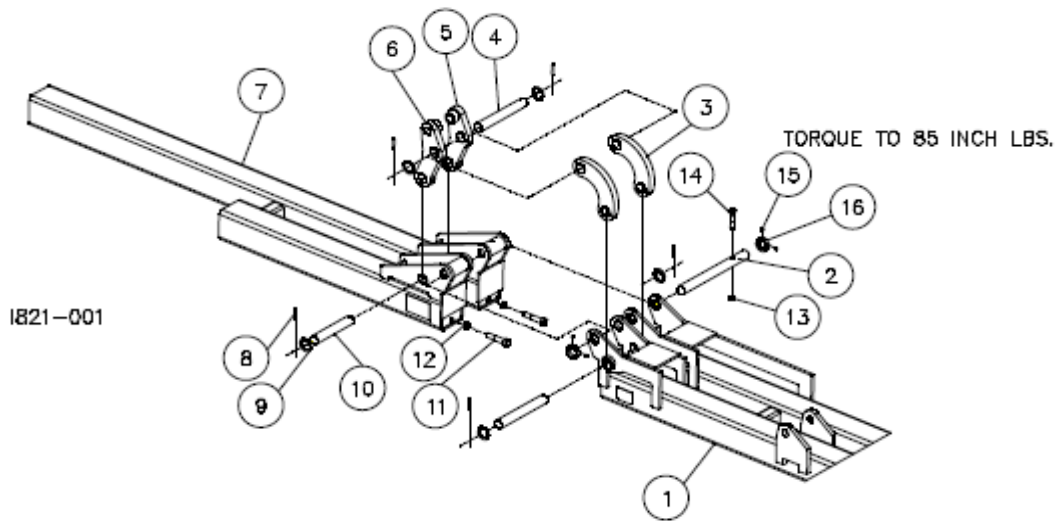
ITEM	QTY	PART NO.	DESCRIPTION
1	4	2502-604	7/8"-9 X 3-1/2 CAP SCREW GR. 2
2	4	2520-543	7/8"-9 JAM HEX NUT
3	24	2527-567	2" WASHER
4	24	2530-208	3/8" X 2-1/2" ROLL PIN
5	4	2530-221	7/16" X 3 ROLL PIN
6	2	3841-204	LH CYLINDER LINK ASSEMBLY
	1	3841-316	LINER 1.0567" ID X 1.75" OD X 3" W
	2	3841-313	LINER 2.0071" ID X 2.25" OD X 1.5" W
7	2	3841-205	RH CYLINDER LINK ASSEMBLY
	1	3841-316	LINER 1.0567" ID X 1.75" OD X 3" W
	2	3841-313	LINER 2.0071" ID X 2.25" OD X 1.5" W
8	4	3841-304	LINK PIN, LONG 14.813"
9	2	3841-305	LINK PIN, SHORT 11.625"
10	4	3841-306	SHORT LINKAGE ASSEMBLY
	2	3841-313	LINER 2.0071" ID X 2.25" OD X 1.5" W
11	4	3841-330	LINK PIN, UPPER 11.162"

MANUFACTURED 01-2021 TO PRESENT

PARTS IDENTIFICATION

3800 HINGE ASSEMBLY

DET	QTY	PART NO.	DESCRIPTION
1	1	3831-207	31" CENTER SECTION
	4	3841-313	LINER, LINK BASE
	8	3841-324	LINER, HINGE PLATE
1	1	3841-216	41" CENTER SECTION
	4	3841-313	LINER, LINK BASE
	8	3841-324	LINER, HINGE PLATE
2	2	3841-303	HINGE PIN
3	2	3841-154	SHORT LINK ASSEMBLY
	1	3841-306	SHORT LINK
	2	3841-313	LINER, LINK BASE
4	4	3841-304	LINK PIN, LONG 14.813"
5	2	3841-205	CYLINDER LINK RIGHT HAND
	2	3841-313	LINER, LINK BASE
	1	3841-316	LINER, ROD END
6	2	3841-204	CYLINDER LINK LEFT HAND
	2	3841-313	LINER, LINK BASE
	1	3841-316	LINER, LINK BASE
7	1	3831-201	L.H. WING
	2	3841-324	LINER, HINGE PLATE
	1	3831-202	R.H. WING (SHOWN)
	2	3841-324	LINER, HINGE PLATE
	1	3841-218	R.H. WING (SHOWN)
	2	3841-324	LINER, HINGE PLATE
	1	3841-217	L.H. WING
	2	3841-324	LINER, HINGE PLATE
	1	3841-316	LINER, ROD END
8	12	2530-208	3/8 X 2-1/2 ROLL PIN ZP
9	12	2527-567	2" WASHER
10	2	3841-305	LINK PIN, SHORT 11.625"
11	4	2502-604	7/8 9X31-1THD HD TPBLT G2Z
12	4	2520-543	7/8 -9 JAM HEX NUT ZP
13	2	2520-515	3/4-10 LOCK HEX NUT ZP
14	2	2502-404	3/4-10 X 4 HHCS GR. 5 ZP
15	2	3841-340	RETAINING COLLAR
16	4	2503-201	1/4-20 X 1/2 SET SCREW

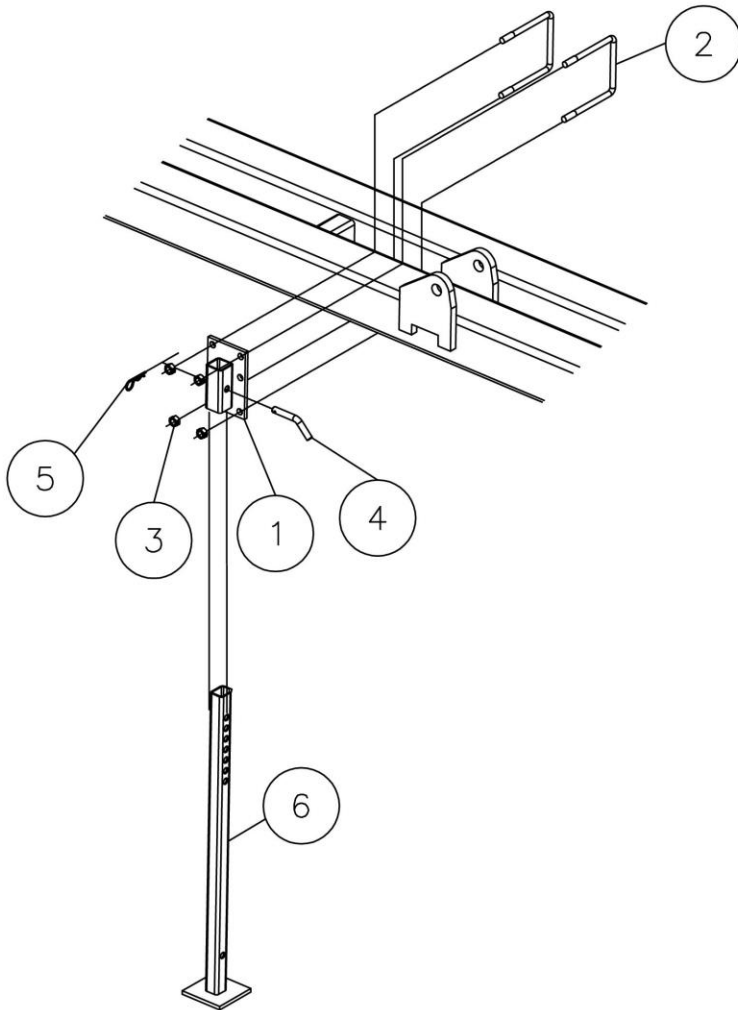


MANUFACTURED 07-2012 TO 12-2020

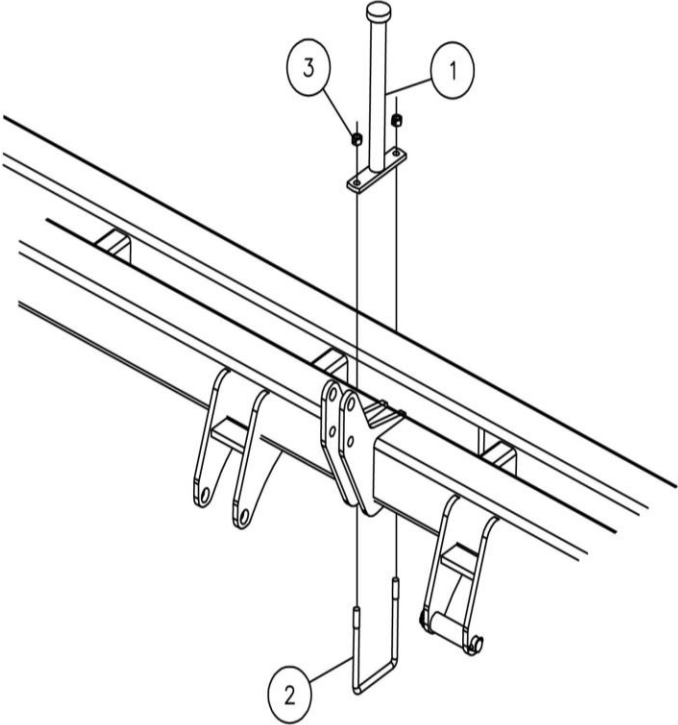
PARTS IDENTIFICATION

PARKING STAND ASSEMBLY

DET	QTY	PART NO.	DESCRIPTION
1	2	3841-211	HD STAND BRACKET W.A.
2	4	2570-478	3/4 X 7 X 9 U-BOLT, ZP
3	8	2520-515	3/4-10 LOCK HEX NUT ZP
4	2	3500-333	STAND PIN, ZP
5	2	2570-465	7 GA. HAIRPIN COTTER ZP
6	2	3841-212	HD STAND W.A.



PARTS IDENTIFICATION



ITEM	QTY.	PART NO.	DESCRIPTION
1	2	3841-219	WING REST
2	2	2570-478	$\frac{3}{4}$ " X 7" X 9" U-BOLT
3	2	2520-515	$\frac{3}{4}$ " LOCK HEX NUT

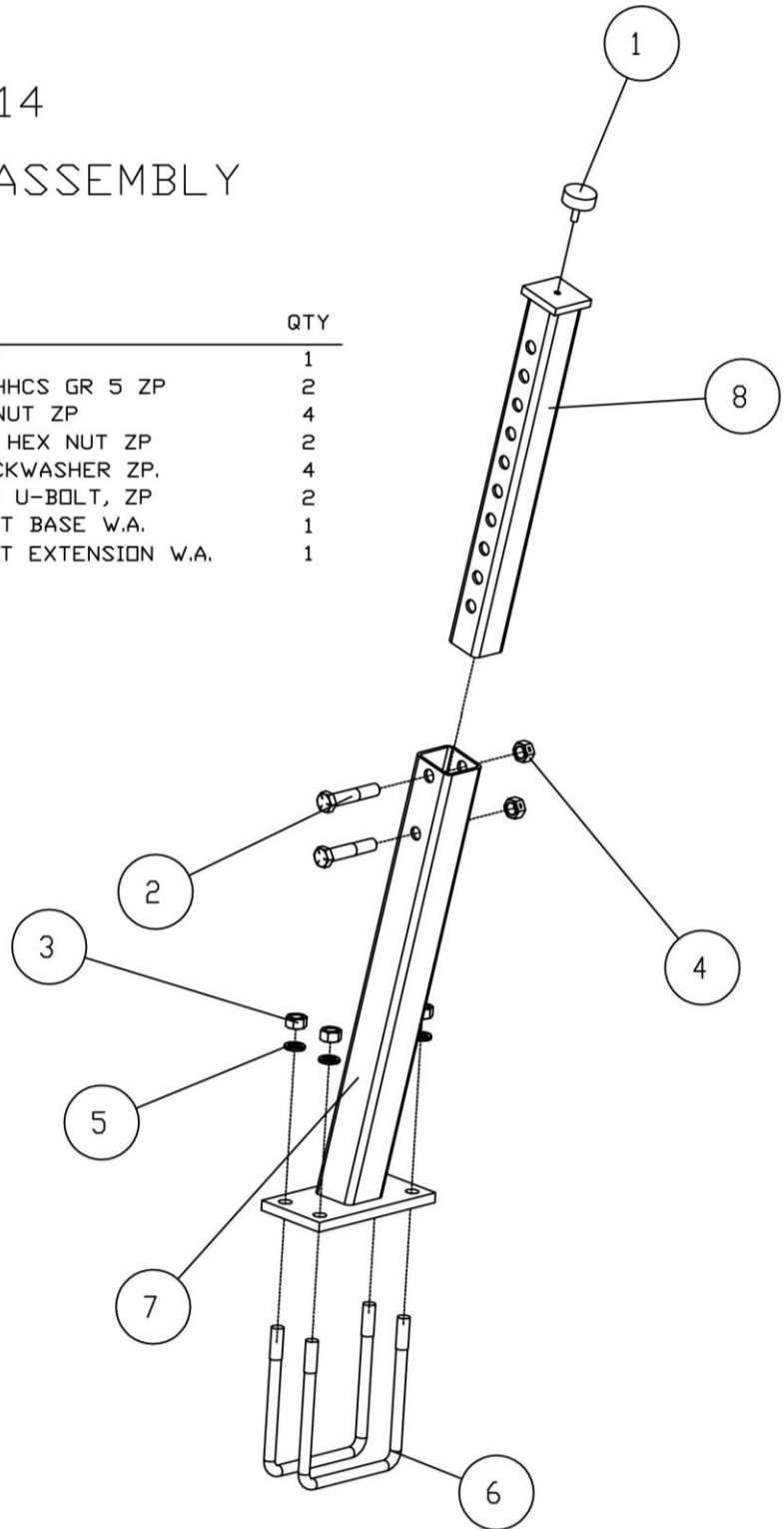
PARTS IDENTIFICATION

OPTIONAL

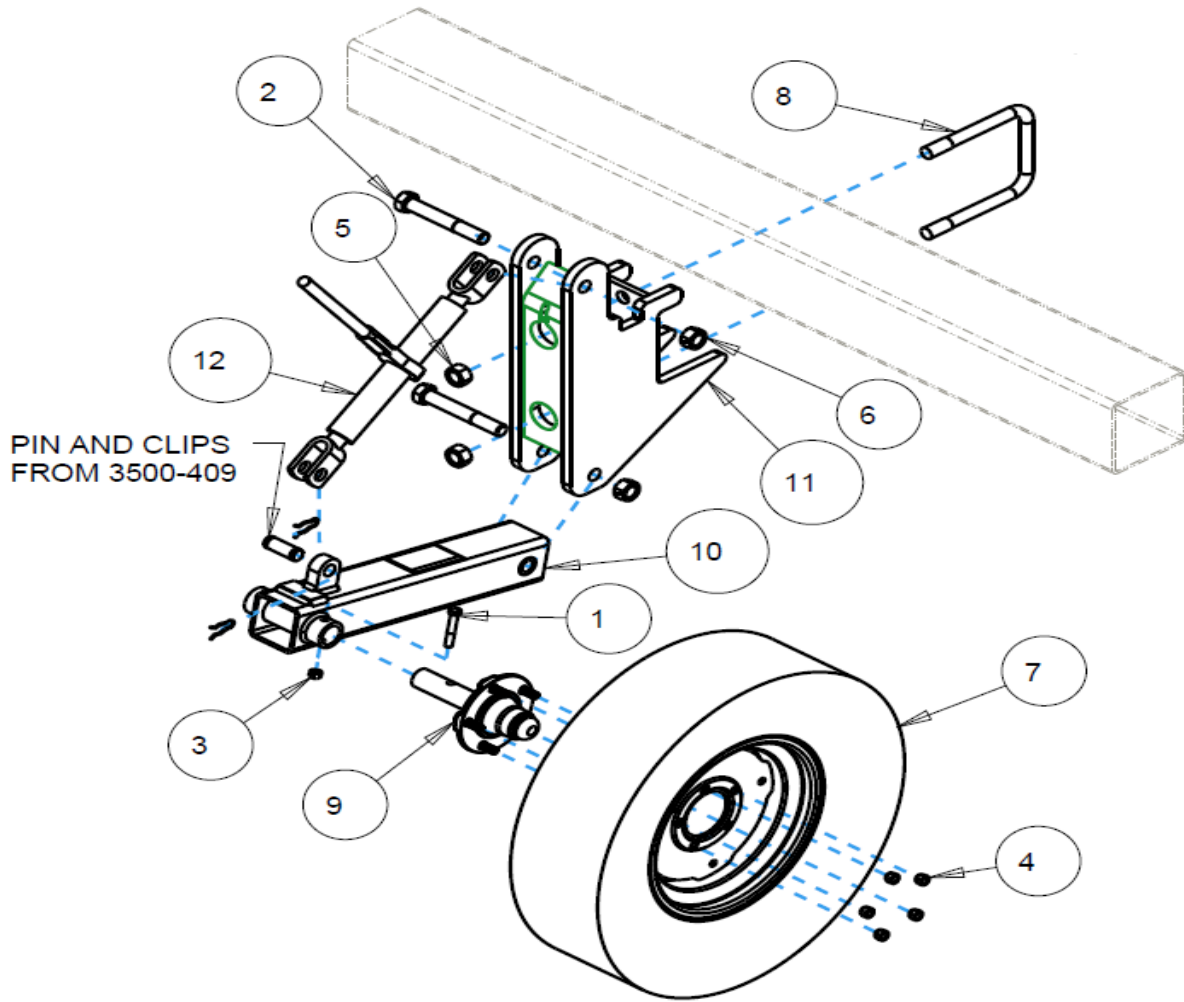
3800-114

WING STAND ASSEMBLY

ITEM	PART NO.	DESCRIPTION	QTY
1	1300-507	RUBBER FOOT	1
2	2502-404	3/4-10 X 4 HHCS GR 5 ZP	2
3	2520-504	3/4-10 HEX NUT ZP	4
4	2520-515	3/4-10 LOCK HEX NUT ZP	2
5	2525-501	3/4 MED. LOCKWASHER ZP.	4
6	2570-478	3/4 X 7 X 9 U-BOLT, ZP	2
7	8000-231	TOOLBAR REST BASE W.A.	1
8	8000-232	TOOLBAR REST EXTENSION W.A.	1

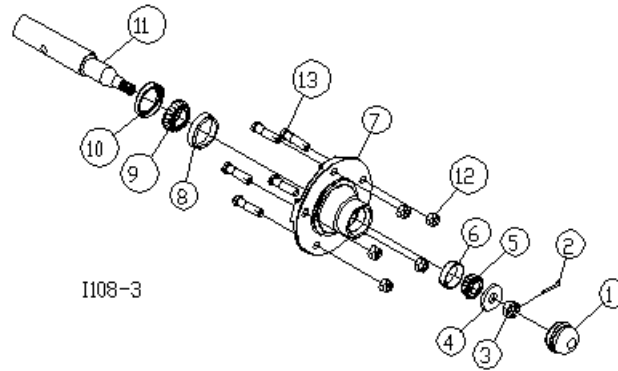


PARTS IDENTIFICATION 3500-113A



ITEM	PART NO.	DESCRIPTION	QTY
1	2502-313	1/2-13 X 3 CAP SCREW GRADE 5	1
2	2502-765	1-8 X 7 CAP SCREW GRADE 8	2
3	2520-357	1/2-13 LOCK HEX NUT GRADE 2	1
4	2520-360	1/2-20 WHEEL NUT GRADE 8	5
5	2520-555	1-8 HEX NUT	2
6	2520-562	1-8 LOCK HEX NUT	2
7	2570-100	GAUGE WHEEL ASSEMBLY	1
	2570-101	TIRE 7.60 -15 IMPLEMENT RIB	1
	2570-323	15 X 5 WHEEL	1
8	2570-485	1 X 7 X 9 U-BOLT	1
9	3400-374	HUB/SPINDLE ASSEMBLY	1
10	3500-236	GAUGE WHEEL ARM	1
11	3500-237	UNDERBAR MOUNT	1
12	3500-409	RATCHET JACK W/PIN AND CLIPS	1

PARTS IDENTIFICATION



I108-3

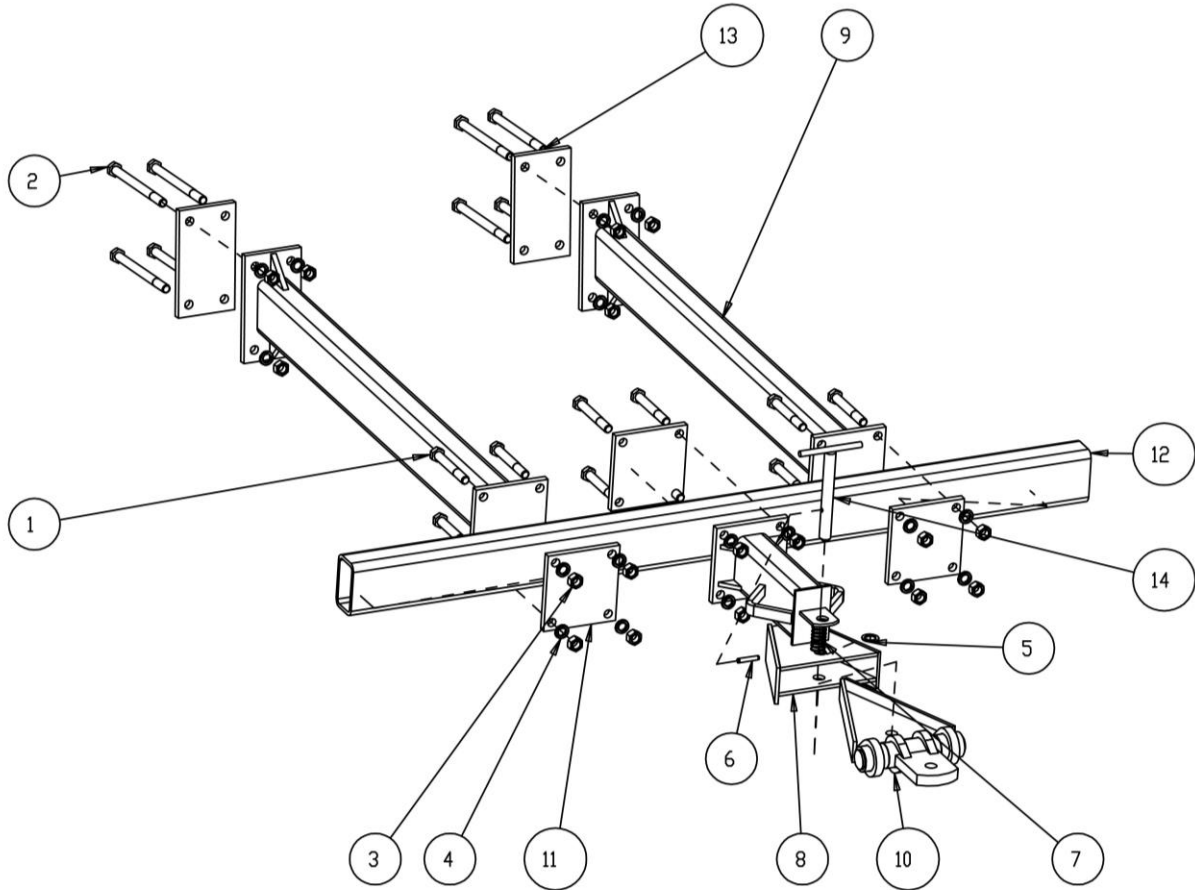
3400-374 HUB AND SPINDLE ASSEMBLY

DET	QTY	PART NO.	DESCRIPTION
1	1	2570-308	HUB CAP
2	1	2531-108	5/32 X 1-1/4 COTTER PIN
3	1	2520-469	5/8-18 SLOTTED HEX NUT
4	1	2526-449	5/8 SAE FLATWASHER
5	1	2550-012	CONE (LM-11949)
6	1	2550-013	CUP (LM-11910)
7	1	HUB	4*PILOT 5-1/2" BOLT CIRCLE (NOT A SERVICE PART)
8	1	2550-029	CUP (LM-67010)
9	1	2550-027	CONE (LM-67048)
10	1	2550-115	SEAL (104078)
11	1	3400-378	SPINDLE, 2570-310
12	5	2520-360	1/2-20 WHEEL HEX NUT
13	5	2570-190	1/2-20 X 1.90" HUB BOLT

REVISED 09/09/2020

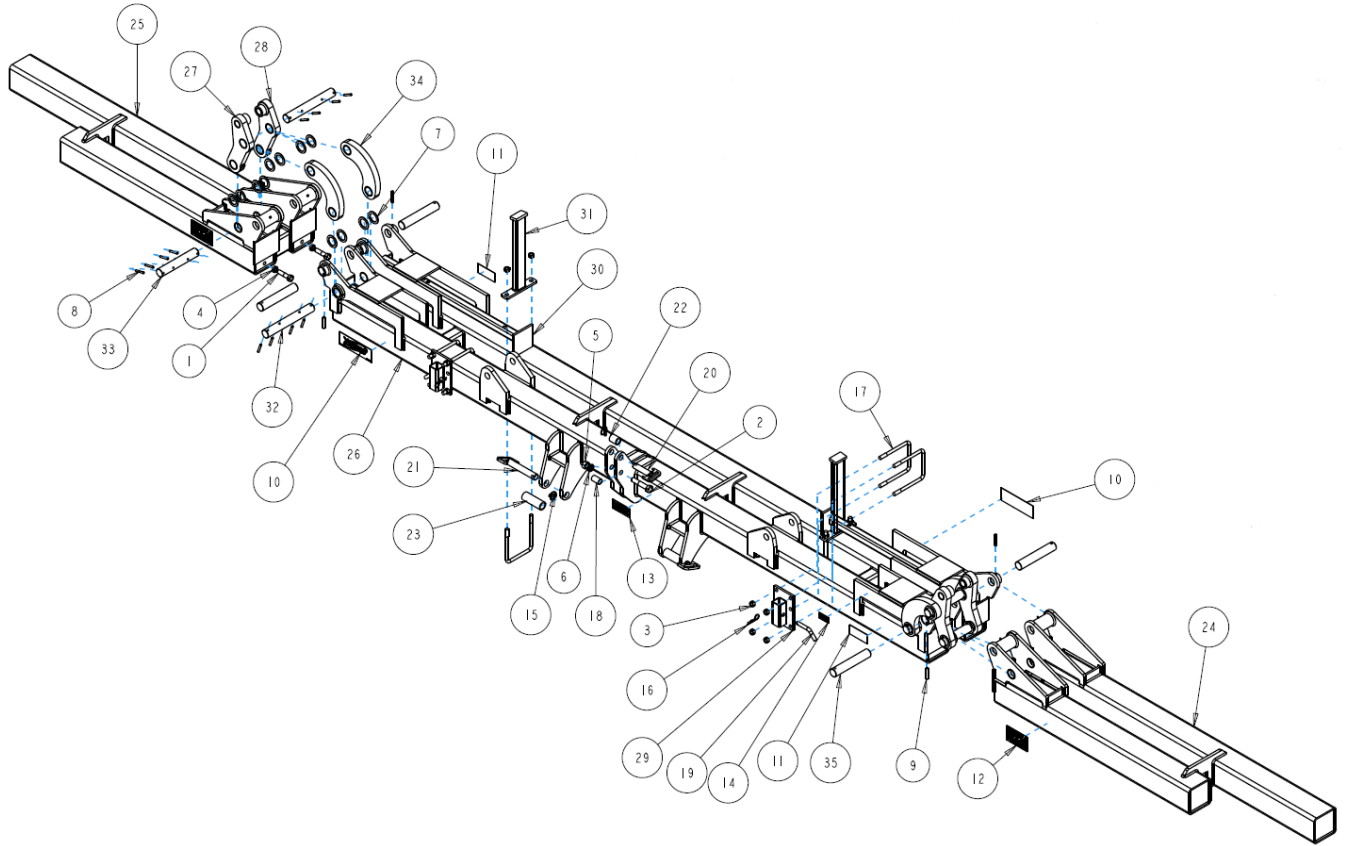
PARTS IDENTIFICATION

3800-110 HITCH KIT



ITEM	PART NO.	DESCRIPTION	QTY
1	2502-508	3/4-10 X 5-1/2 HHCS GR5ZYD	12
2	2502-516	3/4-10 X 9-1/2 HHCS GR5 ZP	8
3	2520-504	3/4-10 HEX NUT ZP	20
4	2525-501	3/4 MED. LOCKWASHER ZP.	20
5	2527-550	1"ID X1-1/2OD X14GA MACH	1
6	2530-212	3/8 X 2 ROLL PIN ZP	1
7	2550-761	THROW OUT CLUTCH SPRING, BLACK	1
8	3800-200	REAR HITCH W.A.	1
9	3800-201	HITCH EXTENSION W.A.	2
10	3800-204	PULLRING ASSEMBLY W.A.	1
11	3800-300	MDUNT PLATE	3
12	3800-302	72" CROSS TUBE	1
13	3800-312	HITCH MOUNT PLATE	2
14	8000-220	HITCH PIN	1

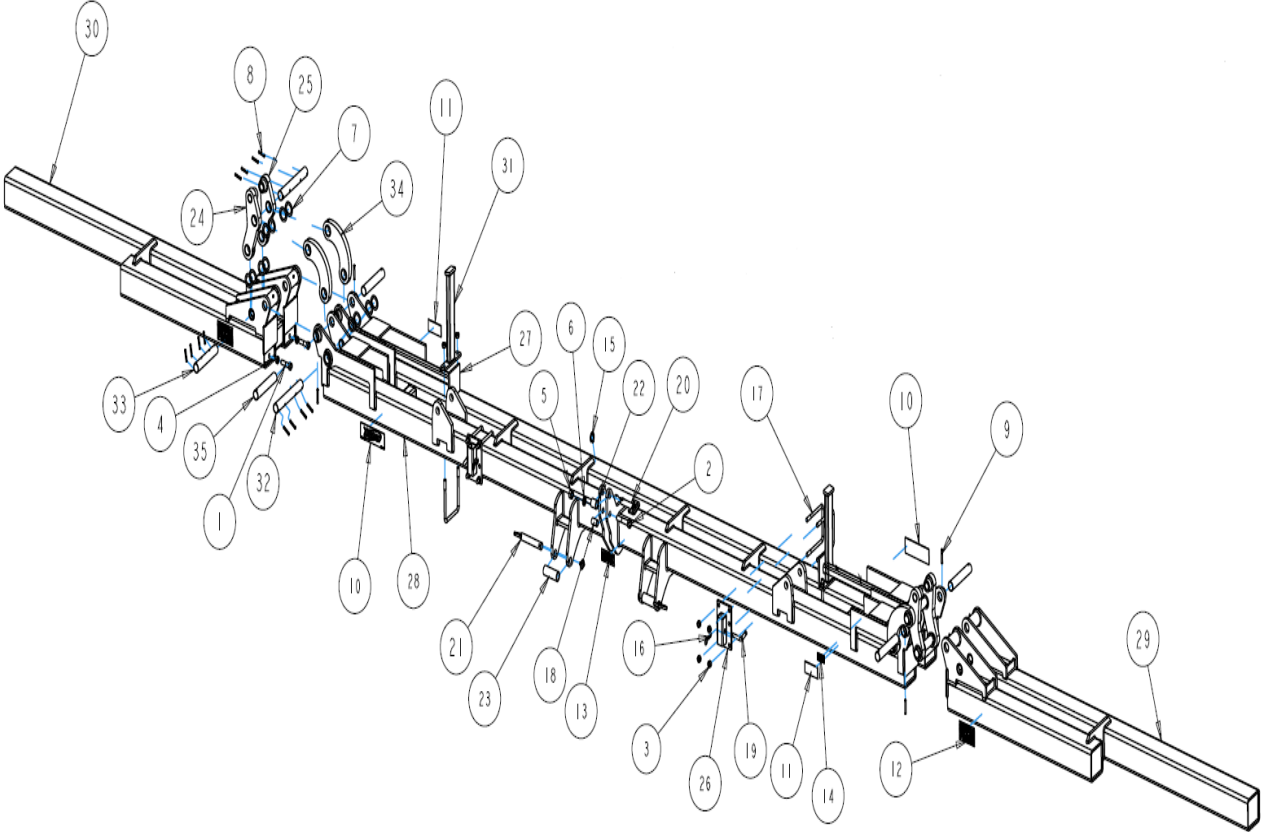
PARTS IDENTIFICATION 3831 TOOLBAR ASSEMBLY



PARTS IDENTIFICATION 3831 TOOLBAR ASSEMBLY

ITEM	PART NO.	DESCRIPTION	QTY
1	2502-604	7/8-9 X 3.5 CAP SCREW GRADE 2	4
2	2502-770	1-8 X 5 CAP SCREW GRADE 5 (OPTIONAL)	1
3	2520-515	¾-10 LOCK NUT GRADE 2	12
4	2520-543	7/8-9 JAM NUT	4
5	2520-555	1-8 HEX NUT (OPTIONAL)	1
6	2525-550	1" LOCKWASHER (OPTIONAL)	1
7	2527-567	2" WASHER	24
8	2530-208	3/8 X 2.5 ROLL PIN	24
9	2530-221	7/16 X 3 ROLL PIN	4
10	2565-058	YETTER FARM DECAL	2
11	2565-087	3831 DECAL	2
12	2565-159	FOLDING DECAL	2
13	2565-163	PARKING DECAL	1
14	2565-466	PRODUCT ID PLATE	1
15	2570-454	KLIK PIN	3
16	2570-465	HAIRPIN COTTER	2
17	2570-478	¾ X 7 X 9 U-BOLT	6
18	3400-312	UPPER HITCH SPACER (OPTIONAL) 1.315"	1
19	3500-333	STAND PIN	2
20	3560-206	UPPER HITCH PIN	1
21	3560-207	LOWER HITCH PIN	2
22	3560-303	UPPER HITCH BUSHING 1.75" OD	1
23	3560-304	BUSHING 2" OD X 1.50" ID X 5.625" LONG	2
24	3831-201	31' LEFT HAND WING	1
	3841-324	LINER 2.0071" ID X 2.25" OD X .75" W	2
25	3831-202	31' RIGHT HAND WING	1
	3841-324	LINER 2.0071" ID X 2.25" OD X .75" W	2
26	3831-207	31' CENTER	1
	3841-313	LINER 2.0071" ID X 2.25" OD X 1.5" W	4
27	3841-204	CYLINDER LINKAGE LEFT HAND	2
	3841-313	LINER 2.0071" ID X 2.25" OD X 1.5" W	2
	3841-316	LINER 1.5" ID X 1.75" OD X 3" W	1
28	3841-205	CYLINDER LINKAGE RIGHT HAND	2
	3841-313	LINER 2.0071" ID X 2.25" OD X 1.5" W	2
	3841-316	LINER 1.5" ID X 1.75" OD X 3" W	1
29	3841-211	STAND BRACKET	2
30	3841-212	STAND	2
31	3841-219	WING REST	2
32	3841-304	LINK PIN 2" X 14.813"	4
33	3841-305	LINK PIN 2" X 11.625"	2
34	3841-306	SHORT LINKAGE ASSEMBLY	4
	3841-313	LINER 2.0071" ID X 2.25" OD X 1.5" W	2
35	3841-330	LINK PIN - UPPER 2" X 11.162"	4

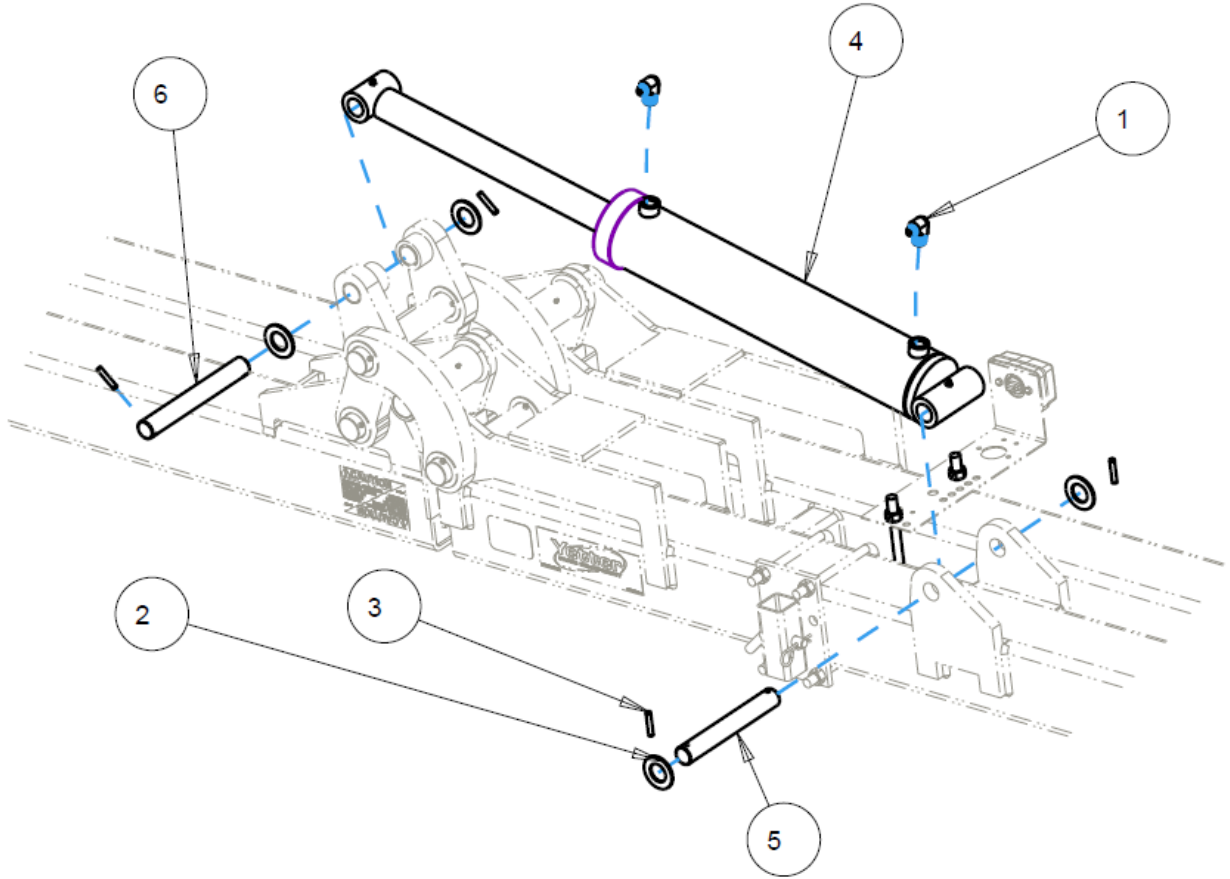
PARTS IDENTIFICATION 3841 TOOLBAR ASSEMBLY



PARTS IDENTIFICATION 3841 TOOLBAR ASSEMBLY

ITEM	PART NO.	DESCRIPTION	QTY
1	2502-604	7/8-9 X 3.5 CAP SCREW GRADE 2	4
2	2502-770	1-8 x 5 CAP SCREW GRADE 5 (OPTIONAL)	1
3	2520-515	3/4-10 LOCK HEX NUT GRADE 2	12
4	2520-543	7/8-9 JAM NUT	4
5	2520-555	1-8 HEX NUT (OPTIONAL)	1
6	2525-550	1" LOCK WASHER (OPTIONAL)	1
7	2527-567	2" WASHER	24
8	2530-208	3/8 X 2.5 ROLL PIN	24
9	2530-221	7/16 X 3 ROLL PIN	4
10	2565-058	YETTER FARM DECAL	2
11	2565-086	3841 DECAL	2
12	2565-159	FOLDING DECAL	2
13	2565-163	PARKING DECAL	1
14	2565-466	PRODUCT ID PLATE	1
15	2570-454	KLIK PIN	3
16	2570-465	HAIRPIN COTTER	2
17	2570-478	3/4 X 7 X 9 U-BOLT	6
18	3400-312	UPPER HITCH SPACER (OPTIONAL) 1.315" OD	1
19	3500-333	STAND PIN	2
20	3560-206	UPPER HITCH PIN	1
21	3560-207	LOWER HITCH PIN	2
22	3560-303	UPPER HITCH BUSHING 1.75" OD	1
23	3560-304	BUSHING 2" OD X 1.50" ID X 5.625" LONG	2
24	3841-204	CYLINDER LINKAGE LEFT HAND	2
	3841-313	LINER 2.0071" ID X 2.25" OD X 1.5" W	2
	3841-316	LINER 1.5" ID X 1.75" OD X 3" W	1
25	3841-205	CYLINDER LINKAGE RIGHT HAND	2
	3841-313	LINER 2.0071" ID X 2.25" OD X 1.5" W	2
	3841-316	LINER 1.5" ID X 1.75" OD X 3" W	1
26	3841-211	STAND BRACKET	2
27	3841-212	STAND	2
28	3841-216	41' CENTER FRAME	1
	3841-313	LINER 2.0071" ID X 2.25" OD X 1.5" W	4
29	3841-217	LEFT HAND WING	1
	3841-324	LINER 2.0071" ID X 2.25" OD X .75" W	2
30	3841-218	RIGHT HAND WING	1
	3841-324	LINER 2.0071" ID X 2.25" OD X .75" W	2
31	3841-219	WING REST	2
32	3841-304	LINK PIN 2" X 14.813"	4
33	3841-305	LINK PIN 2" X 11.625"	2
34	3841-306	SHORT LINKAGE ASSEMBLY	4
	3841-313	LINER 2.0071" ID X 2.25" OD X 1.5" W	2
35	3841-330	LINK PIN UPPER 2" X 11.162	4

PARTS IDENTIFICATION



MANUFACTURED 07-2012 TO 07-2025

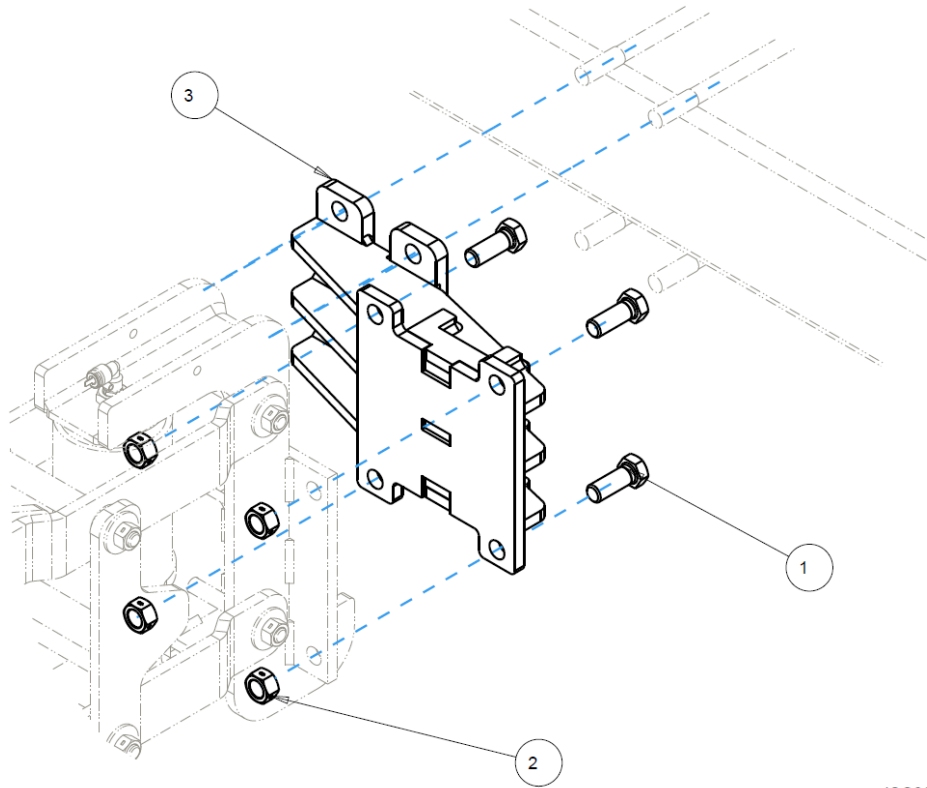
ITEM	PART NO.	DESCRIPTION	QTY
1	2515-830	2501-06-12 90 DEG. FITTING (RESTRICTED)	4
2	2527-566	1.5" TYPE B NARROW WASHER	8
3	2530-212	3/8 X 2 ROLL PIN ZP	8
4	3841-300	5 X 24 HD WELDED HYDRAULIC CYLINDER	2
5	3841-301	CYLINDER PIN, BASE END	2
6	3841-302	CYLINDER PIN, ROD END	2

MANUFACTURED 02-2026 TO PRESENT

ITEM	PART NO.	DESCRIPTION	QTY
1	2515-857	90 DEGREE ELBOW RESTRICTED -6 JIC MALE TO -12 ORB MALE	4
2	2527-566	1.5 INCH WASHER TYPE B NARROW	8
3	2530-212	3/8 X 2 ROLL PIN	8
4	3841-300A	5 X 24 WELDED CYLINDER	2
	2515-858	SEAL KIT	1
5	3841-301	CYLINDER PIN BASE END	2
6	3841-302	CYLINDER PIN ROD END	2

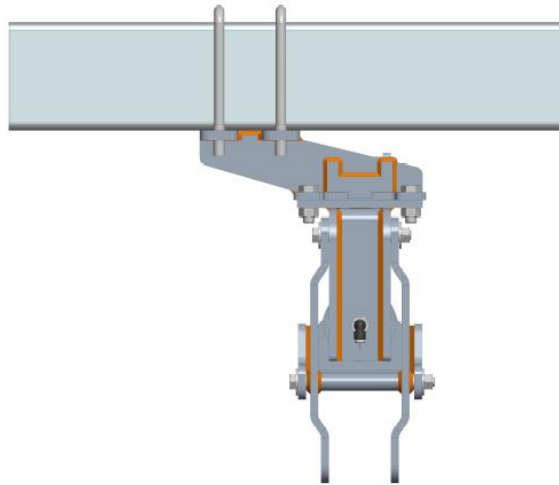
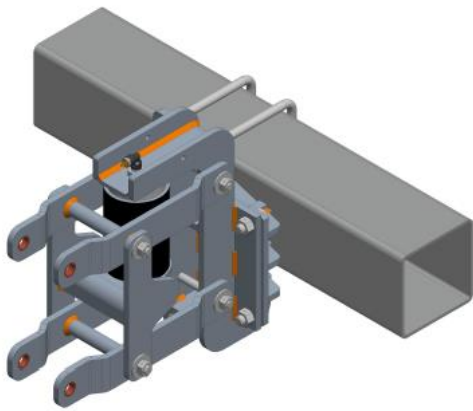
PARTS IDENTIFICATION

3800-115 OFFSET BRACKET KIT



ISO3800-115

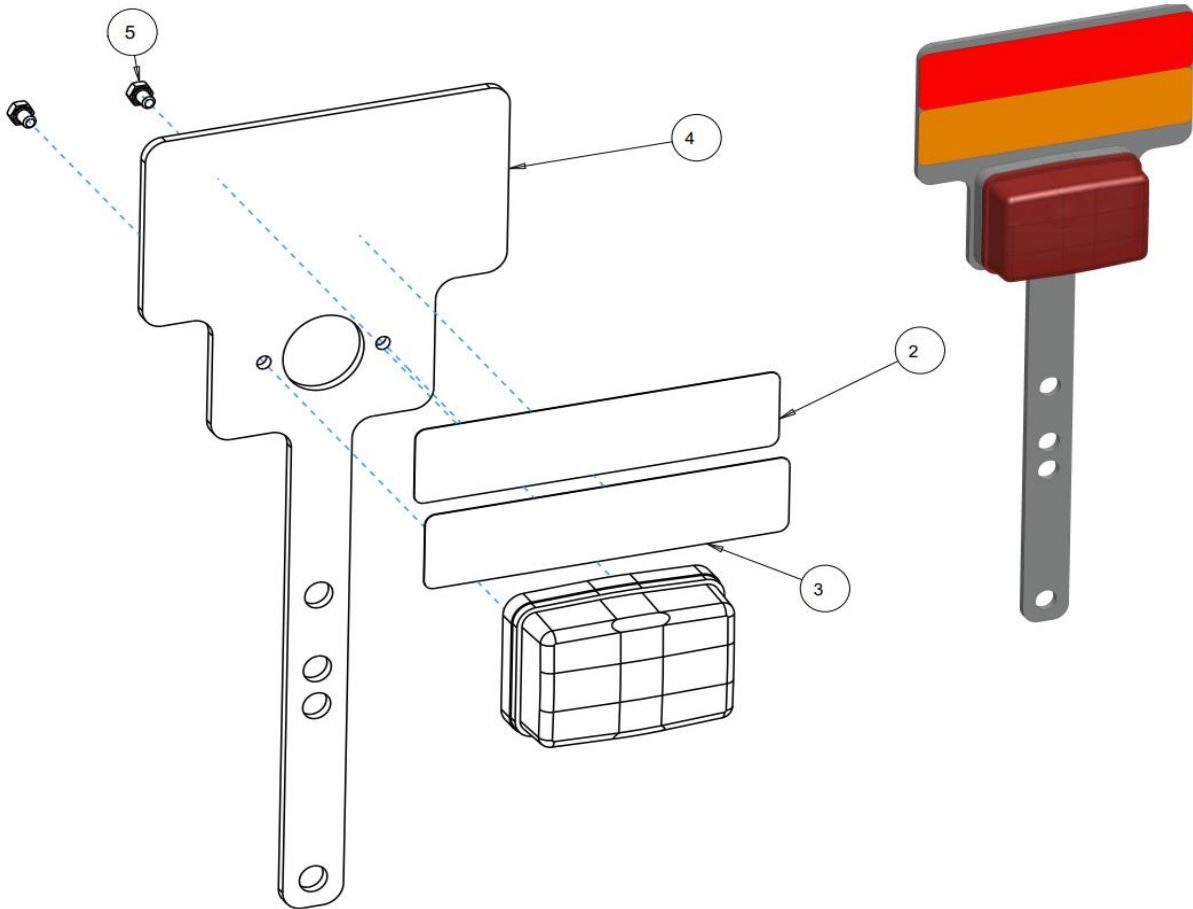
ITEM	PART NO.	DESCRIPTION	QTY
1	2502-503	3/4-10 X 2 HHCS GR.5 ZP	4
2	2520-515	3/4-10 LOCK HEX NUT, GR A, ZP	4
3	3800-206	7" OFFSET 4.5" SETBACK W.A.	1



PARTS IDENTIFICATION

3800-120 RED LIGHT ASSEMBLY

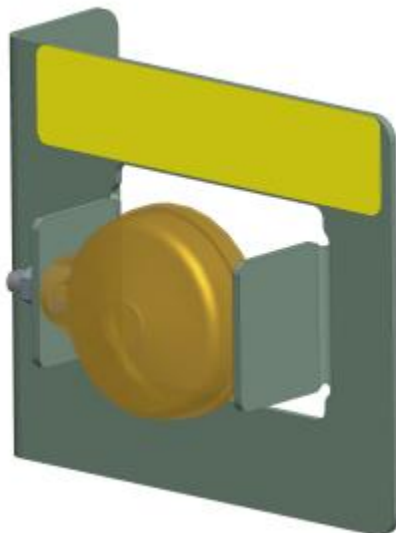
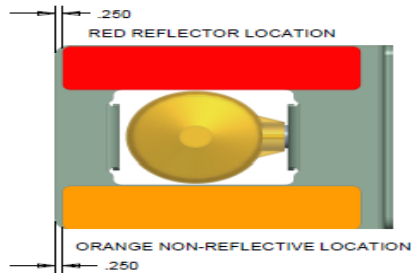
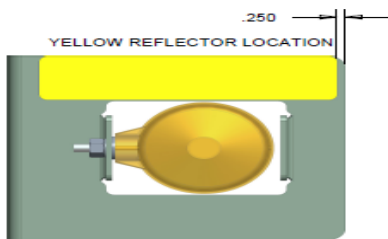
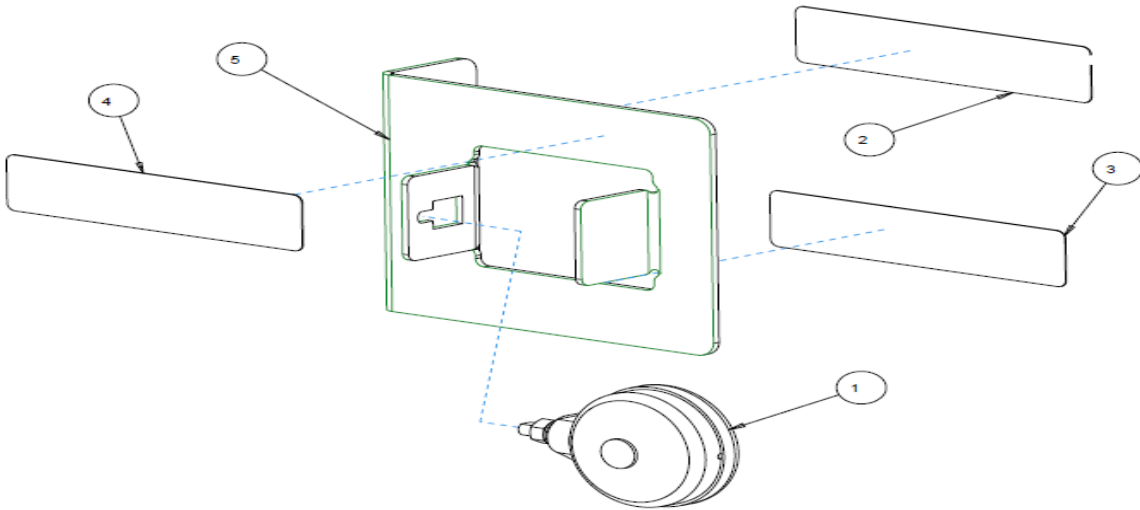
ITEM	PART NO.	DESCRIPTION	QTY.
1	1300-447	LAMP, RED	1
2	2565-459	RED REFLECTOR	1
3	2565-460	NONREFLECTIVE RED-ORANGE FLUORESCENT	1
4	3800-326	LIGHT BRACKET, RED LAMP	1
5	19M7297	M8 X 12MM CAP SCREW GRADE 5	2



PARTS IDENTIFICATION

3800-121 AMBER LIGHT ASSEMBLY, LEFT HAND

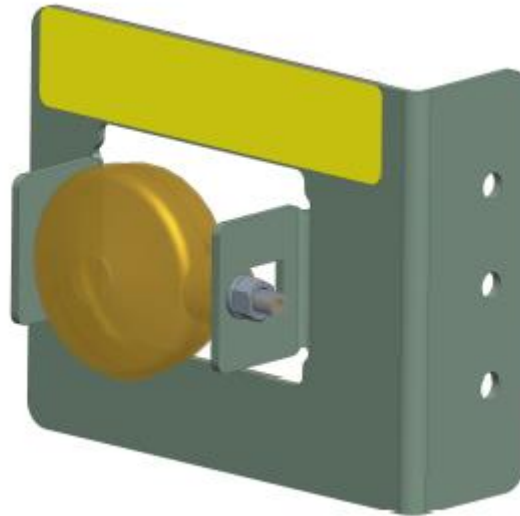
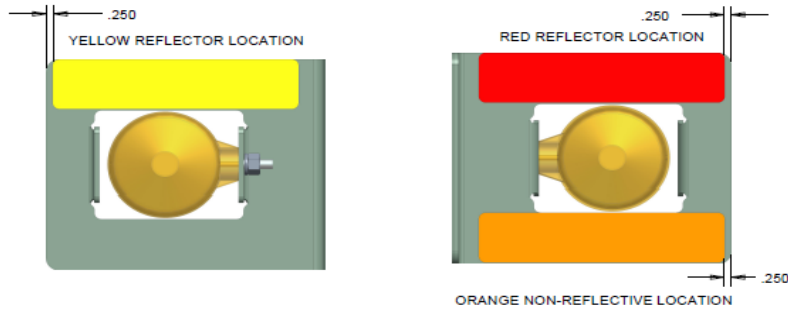
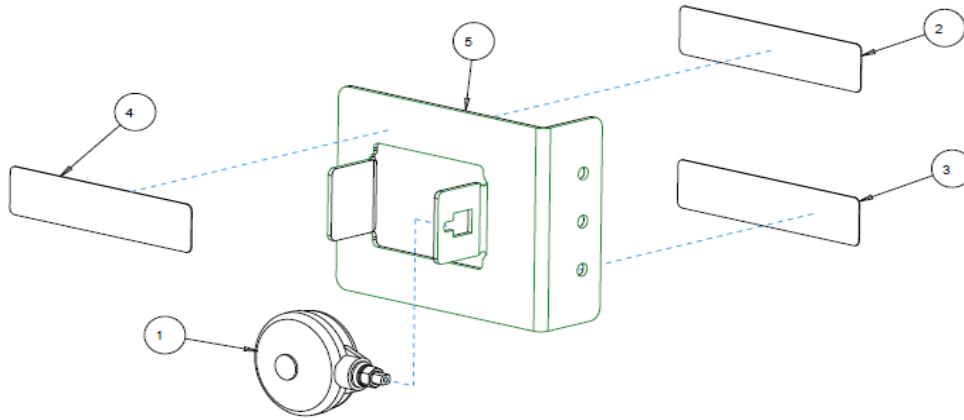
ITEM	PART NO.	DESCRIPTION	QTY.
1	1300-448	LAMP, AMBER	1
2	2565-459	RED REFLECTOR	1
3	2565-460	NONREFLECTIVE RED-ORANGE FLUORESCENT	1
4	2565-813	YELLOW REFLECTOR	1
5	3800-327	AMBER LIGHT BRACKET	1



PARTS IDENTIFICATION

3800-122 AMBER LIGHT ASSEMBLY, RIGHT HAND

ITEM	PART NO.	DESCRIPTION	QTY.
1	1300-448	LAMP, AMBER	1
2	2565-459	RED REFLECTOR	1
3	2565-460	NONREFLECTIVE RED-ORANGE FLUORESCENT	1
4	2565-813	YELLOW REFLECTOR	1
5	3800-327	AMBER LIGHT BRACKET	1



TROUBLE SHOOTING

Problem	Cause	Solution
Hydraulic cylinders fail to operate properly	Hydraulic system improperly installed Air in system Blocked restrictors	Check for correct assembly of the hydraulic system Check for air in the hydraulic system and purge system Check restrictors for malfunctions

NOTES

NOTES



A Tradition of Solutions since 1930

Yetter Farm Equipment Co

PO BOX 358 109 S. McDonough

Colchester, IL 62326-0358

Phone: 309-776-4111

Toll Free: 800-447-5777

Email: info@yetterco.com

For updated models and manuals visit the Yetter website:

www.yetterco.com

© Yetter Farm Equipment Co. All Rights Reserved

2565-772_REV_M • 03/2026