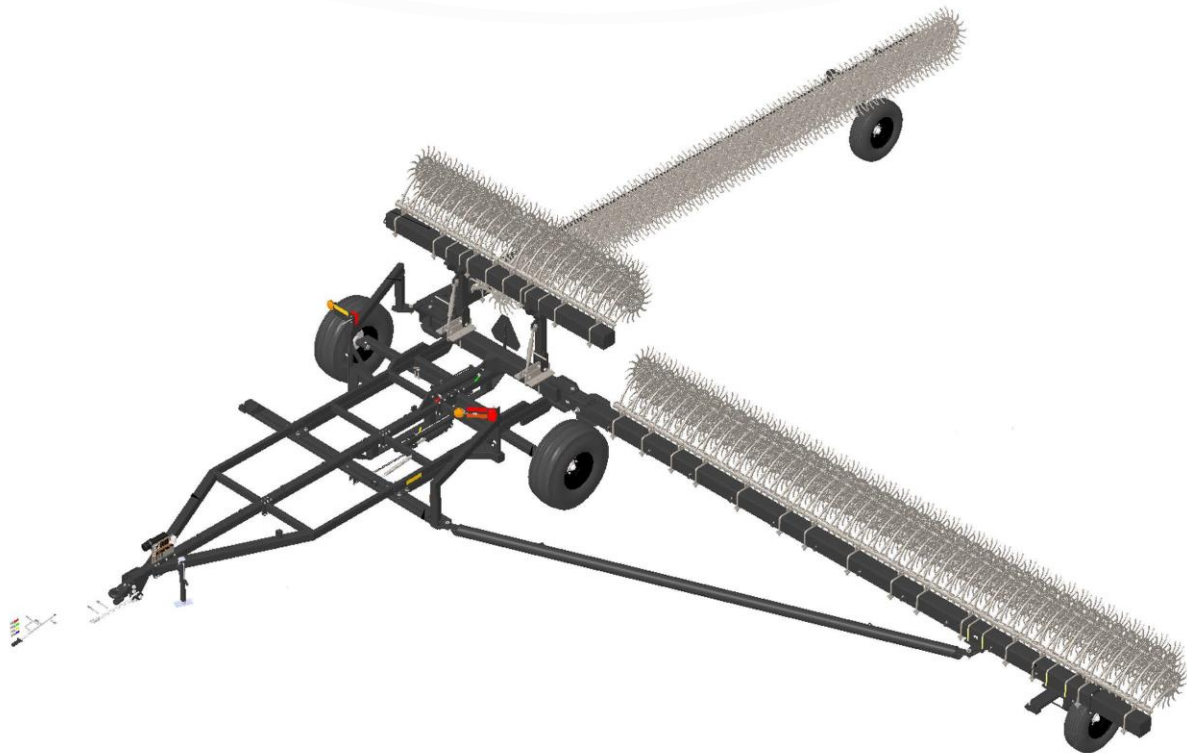


Yetter

FARM EQUIPMENT



3650 / 3660 / 3666 ROTARY HOE PARTS MANUAL

2565-974 _REV_D • 01/2025

YETTER MANUFACTURING CO.
FOUNDED 1930

Colchester, IL 62326-0358
Toll free: 800/447-5777
309/776-3222 (Fax)
Website: www.yetterco.com
E-mail: info@yetterco.com

YETTER




FOREWORD


You've just joined an exclusive but rapidly growing club.
For our part, we want to welcome you to the group and thank you for buying a Yetter product.


We hope your new Yetter products will help you achieve both goals-increase your productivity and increase your efficiency so that you may generate more profit.


This operator's manual has been designed into four major sections: Foreword, Safety Precautions, Installation Instructions and Parts Breakdown.

This **SAFETY ALERT SYMBOL** indicates important safety messages in the manual. When you see this symbol, be alert to the possibility of **PERSONAL INJURY** and carefully read the message that follows.

 **DANGER:** Indicates an imminently hazardous situation which, if not avoided "will" result in death or serious injury. This signal word is to be limited to the most extreme situations

 **WARNING:** Indicates a potentially hazardous situation which, if not avoided, "could" result in death or serious injury.

 **CAUTION:** Indicates a potentially hazardous situation, which if not avoided, "may" result in minor or moderate injury. It may also be used to alert against unsafe practices.

 **NOTICE:** Indicates information considered important, but not hazard related (e.g., messages relating to property damage).

It is the responsibility of the user to read the operator's manual and comply with the safe and correct operating procedure and to lubricate and maintain the product according to the maintenance schedule in the operator's manual.

The user is responsible for inspecting his machine and for having parts repaired or replaced when continued use of the product would cause damage or excessive wear to the other parts.

It is the user's responsibility to deliver his machine to the Yetter dealer who sold him the product for service or replacement of defective parts, which are covered by the warranty policy.

If you are unable to understand or follow the instructions provided in this publication, consult your local Yetter dealer or contact:

YETTER MANUFACTURING CO.

309/776-4111

800/447-5777

309/776-3222 (FAX)

Website: www.yetterco.com

E-mail: info@yetterco.com

WARRANTY

Yetter Manufacturing warrants all products manufactured and sold by it against defects in material. This warranty being expressly limited to replacement at the factory of such parts or products as shall appear to be defective after inspection. This warranty does not obligate the Company to bear cost of labor in replacement of parts. It is the policy of the Company to make improvements without incurring obligations to add them to any unit already sold. No warranty is made or authorized to be made, other than herein set forth. This warranty is in effect for one year after purchase.

DEALER: _____

Yetter Manufacturing warrants its own products only and cannot be responsible for damages to equipment on which mounted.



ILLUSTRATED PARTS LIST

Yetter 3650, 3660, 3660 Rotary Hoe

This form must be filled out by the dealer and signed by both the dealer and the customer at the time of delivery.

Customer Name					
Address					
City		State		Zip	
Phone					
Dealer Name					
Address					
City		State		Zip	
Model Number					
Serial Number					
Delivery Date					

DEALER INSPECTION REPORT

- ☐ All Fasteners Tight
- ☐ Wheel Bolts Torqued
- ☐ Hydraulic Hoses and Fittings Free and Tight
- ☐ Fertilizer Hoses and Fittings Free and Tight
- ☐ Wheel Drive Turns Freely
- ☐ Lubricate Machine
- ☐ Check Tire Pressure
- ☐ Frame and Wings Level
- ☐ Monitors and Controllers Function
- ☐ Wiring Harness Connected

I have thoroughly instructed the buyer on the above described equipment which review included the Operator's Manual content, equipment care, adjustments, safe operation and applicable warranty policy.

Date _____

Dealer's Rep. Signature _____

The above equipment and Operator's Manual have been received by me and I have been thoroughly instructed as to care, adjustments, safe operation and applicable warranty policy.

Date _____

Owner's Signature _____

SAFETY

- ☐ Safety Chain Installed
- ☐ All Guards Installed
- ☐ All Safety Signs Installed
- ☐ Reflectors, SMV and Lights Clean
- ☐ Review Operating and Safety Instructions

ROTATRY HOE SERIAL # _____

DATE PURCHASED ____/____/____ **WIDTH** _____

General Information

All rights, especially copying and distribution rights are reserved. No part of this publication may be reproduced in any form or by any means, electronic or mechanical, including photocopying, without express written permission from Yetter Manufacturing.

Parts information in this manual represents components installed when product was manufactured based upon the best available information. Modifications made subsequent to initial delivery are not included. Always verify the parts and color required when ordering parts.

If you have any questions, please contact your Yetter Parts and Service Department.

Explanation of Parts Lists

The parts lists are broken down sub assemblies and listed in 4 columns:

- ITEM - These numbers are found on the illustration associated with the parts list.
 - NS- This item is NOT SHOWN, included for reference.
- QTY. - This is the quantity of parts needed in an assembly.
 - AR- The quantity of this item is AS REQUIRED for the location.
- PART NO.- These are the part numbers associated to the ITEM.
- DESCRIPTION - This is the description of the part.

Section	Table of Contents	Page
Table of Contents		4
Rotary Hoe Info		5
Base Rotary Hoe Assembly		6-18
Depth Adjust Assembly		18-21
Base Toolbar Assembly		22-25
Rotary Hoe Wheel Axle Assembly		26-27
60' Toolbar		28
Hydraulics		29-35
RH Wing Wheel Assembly		36-37
LH Wing Wheel Assembly		38-39
Hub and Spindle Assembly (N709) 730106		40
Hub and Spindle Assembly (N709) 730140		41
Hub and Spindle Assembly (N45-8) 730008		42
Hub and Spindle Assembly (N890) 730113		43

ROTARY HOE INFO:

3650-101 TOTAL WEIGHT – 11,000 LBS. # OF HOE WHEELS – 174
3660-101 TOTAL WEIGHT – 13,000 LBS. # OF HOE WHEELS – 208
3666-101 TOTAL WEIGHT – 14,500 LBS. # OF HOE WHEELS – 230

7" X 7" MAIN FRAME

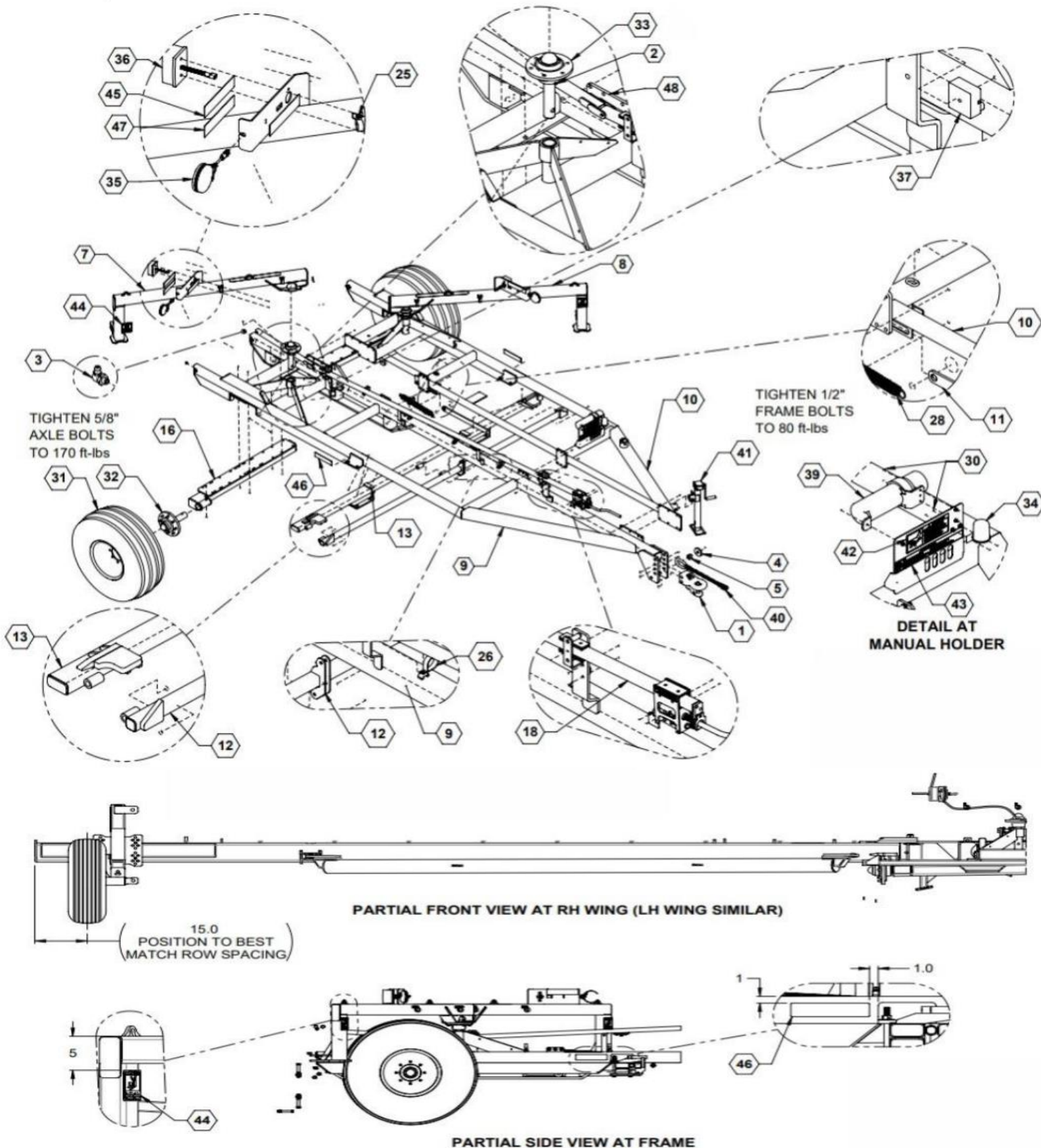
TRANSPORT WIDTH – 11.5 FEET

3.25" HOE WHEEL SPACING

TIRES MAIN – 14L-16.1 10 PLY WITH 8 BOLT HUB
 GAUGE – 9.5L-15SL 8 PLY WITH 6 BOLT



Base Rotary Hoe Assembly

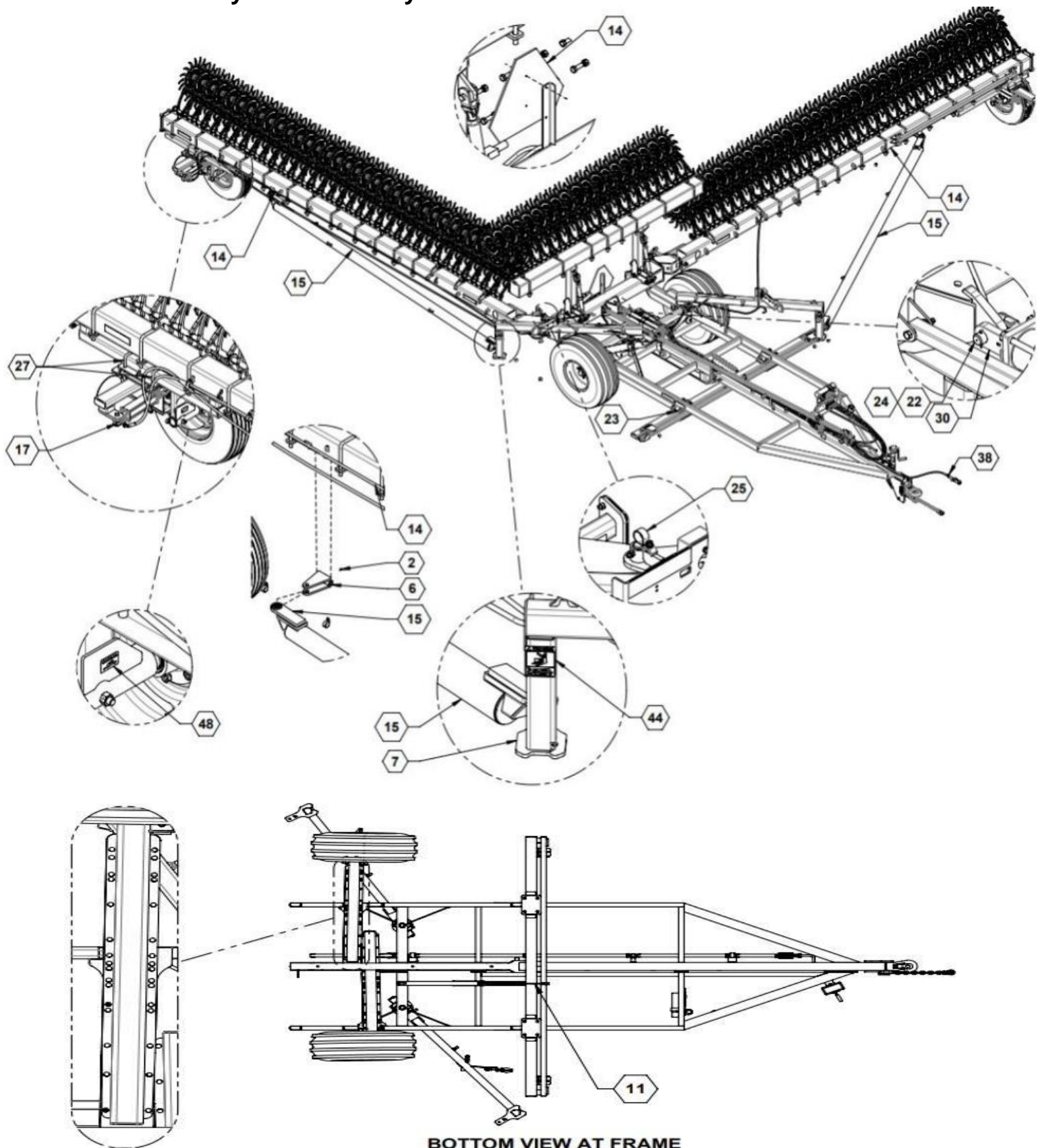


Base Rotary Hoe Assembly

ITEM	PART NO.	DESCRIPTION	QTY
1	90SAHITCLG	HITCH LARGE CAT 4	1
2	759	LUBE FITTING ¼-28 STRAIGHT	5
3	761	LUBE FITTING ¼-28 90 DEGREE ELBOW	3
4	15829	WASHER PLATE SAFETY CHAIN	1
5	15835	BUSHING SAFETY CHAIN SPACER	1
7	27560	WELDMENT RH FOLD ARM	1
8	27580	WELDMENT LH FOLD ARM	1
9	27614	WELDMENT RH FRAME	1
10	27615	WELDMENT LH FRAME	1
11	27617	PLATE 3/8" FIELD LATCH	1
12	27721	WELDMENT FIELD LOCK PIVOT	1
13	27723	WELDMENT FIELD LOCK	1
16	28070	WELDMENT FRONT AXLE	2
18	28090	DEPTH ADJUSTMENT ASSEMBLY	1
25	540035	P-CLAMP 1-1/4"	26
26	540051	P-CLAMP 2" WITH 3/8" HOLE	5
28	590834	SPRING CENTURY 4075	1
30	620100	CLEVIS 1.25" PIN X 1.5" ROD	1
31	700208	WHEEL 14L X 16.1 SL 8 BOLT RIM	2
32	730008	HUB-SPINDLE ASSEMBLY 8 BOLT	2
33	730140	HUB-SPINDLE ASSEMBLY 709	2
34	740018	LIGHT HARNESS HOLDER	1
35	740024	LIGHT AMBER WARNING	2
36	740025	LIGHT RED TAIL WARNING	2
37	740031	MODULE FLASHER	1
39	750048	MANUAL HOLDER	1
40	790049	SAFETY CHAIN 20000 LB	1
41	790051	JACK 5000 LB SIDE WIND	1
42	800098	DECAL WARNING HYDRAULIC FLUID	1
43	800104	DECAL WARNING SPEED/MPH	1
44	800105	DECAL WARNING-STAND CLEAR	2
45	800109	DECAL RED REFLECTOR	2
46	800110	DECAL AMBER REFLECTOR	4
47	800111	DECAL NON-REFLECTIVE ORANGE	2
48	800287	DECAL GREASE/LUBE POINTS	6

ILLUSTRATED PARTS LIST

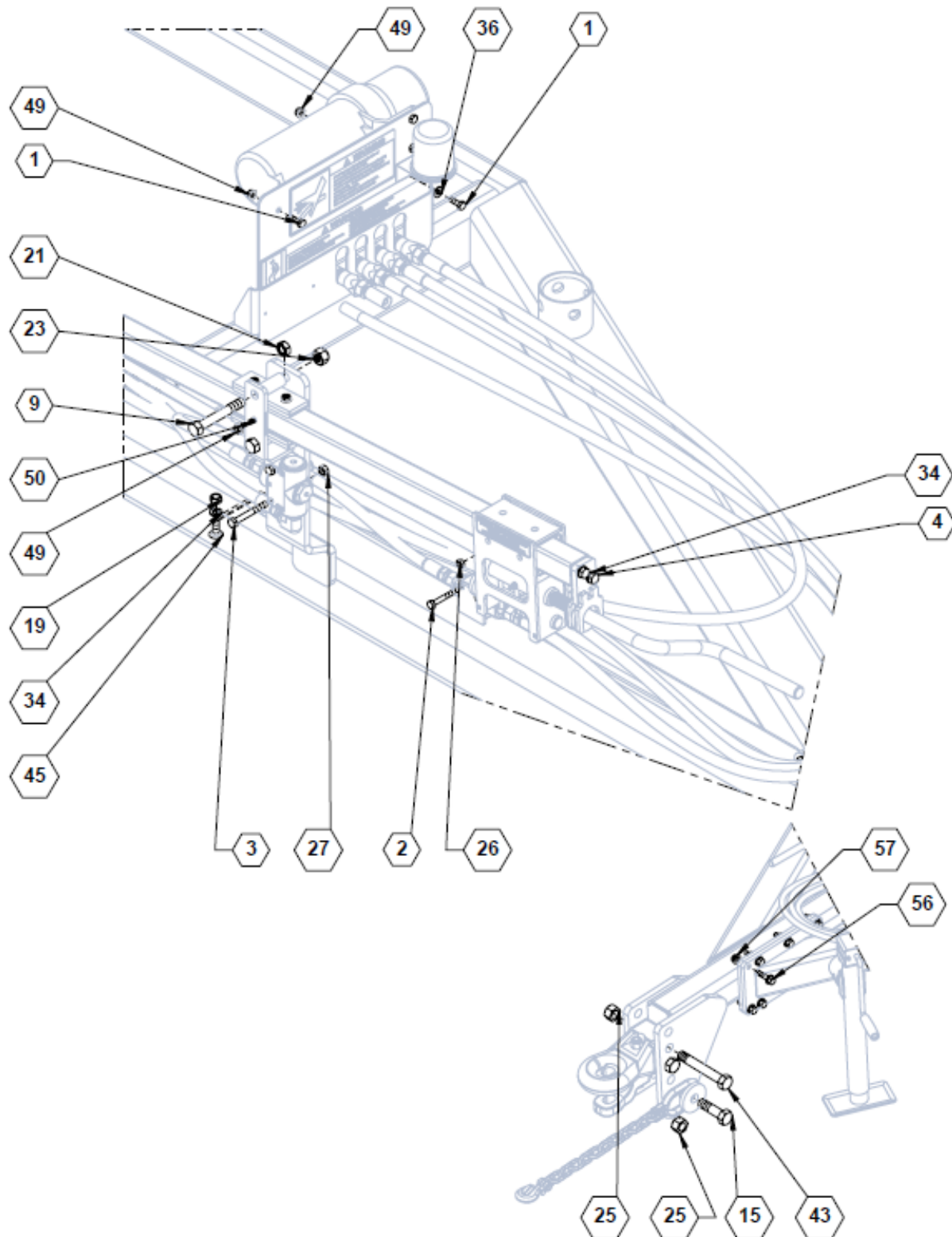
Base Rotary Hoe Assembly Parts List



Base Rotary Hoe Assembly

ITEM	PART NO.	DESCRIPTION	QTY
2	759	LUBE FITTING ¼-28 STRAIGHT	5
6	27510	WELDMENT LINKAGE SWING	2
7	27560	WELDMENT RH FOLD ARM	1
11	27617	PLATE 3/8" FIELD LATCH	1
14	27905	ASSEMBLY BASE TOOLBAR	1
15	27936	WELDMENT LINKAGE BAR	2
17	28073	HYDRAULIC ASSEMBLY	1
19	28195	RIGHT HAND WING WHEEL ASSEMBLY (NOT SHOWN)	1
20	28196	LEFT HAND WING WHEEL ASSEMBLY (NOT SHOWN)	1
21	28773	WELDMENT REAR TIRE MOUNT (NOT SHOWN)	2
22	28915	PIN, ROD END MAIN LIFT	1
23	35262	LATCH SHIM	4
24	530291	BUSHING, 1-1/4" ID X 1" LONG	1
25	540035	P-CLAMP 1-1/4"	26
27	590404	U-BOLT 5/8" 5 X 5	4
30	620100	CLEVIS ADJUSTMENT 1.25" PIN, 1.5" ROD	1
38	740047	HARNESS SAFETY LIGHT	1
44	800105	DECAL, WARNING STAND-CLEAR	2
48	800287	DECAL GREASE/LUBE POINTS	6

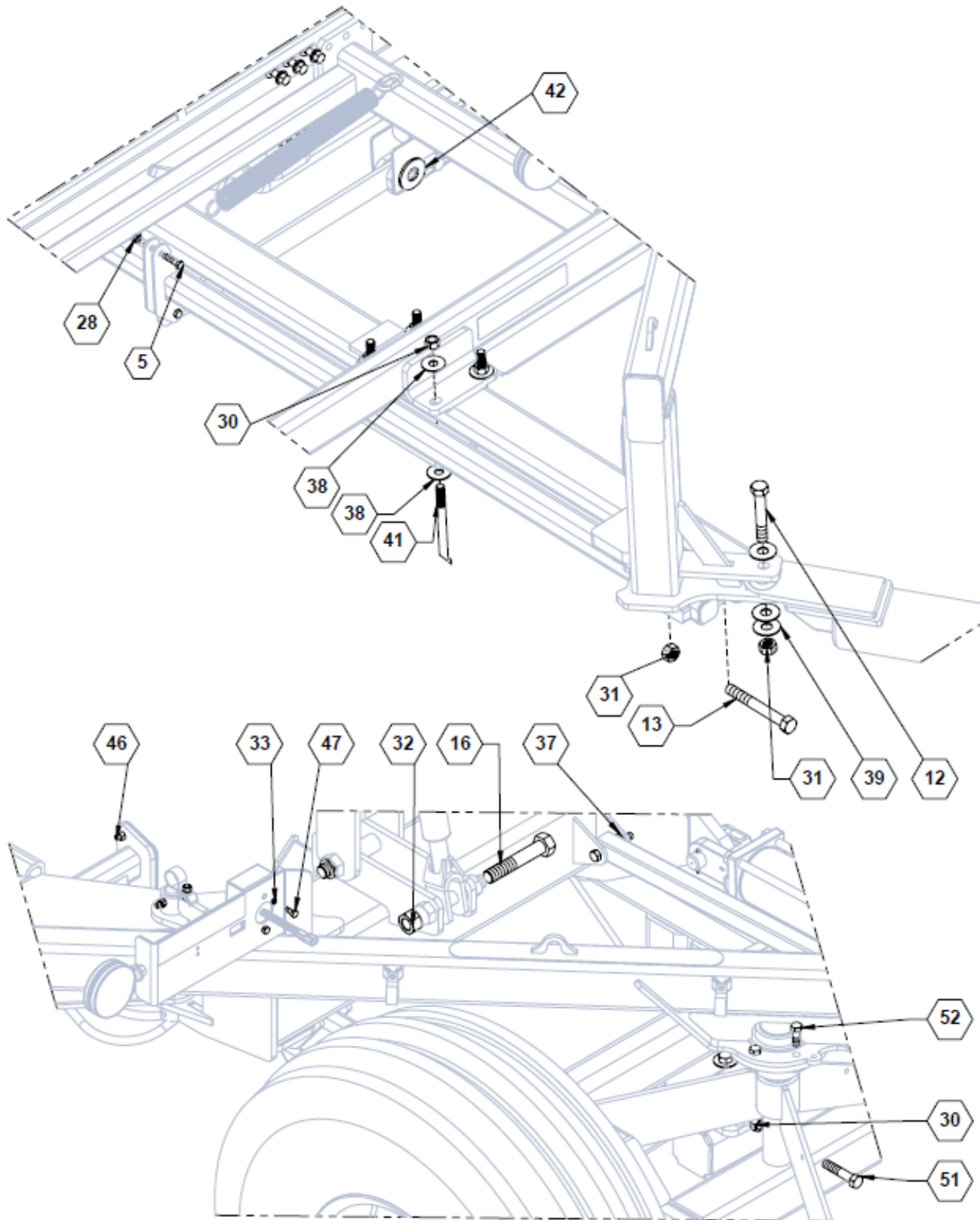
Base Rotary Hoe Assembly



Base Rotary Hoe Assembly

ITEM	PART NO.	DESCRIPTION	QTY
1	101	CAP SCREW ¼-20 X ¾ GRADE 5	7
2	104	CAP SCREW ¼-20 X 2 GRADE 5	2
3	118	CAP SCREW 5/16-18 X 2-1/2 GRADE 5	2
4	128	CAP SCREW 3/8-16 X 1 GRADE 5	2
9	157	CAP SCREW ½-13 X 3-1/2 GRADE 5	6
15	201	CAP SCREW 1-8 X 3-1/2 GRADE 5	1
19	213	HEX NUT 3/8-16	31
21	223	HEX NUT JAM ½-13 GRADE 5	6
23	231	HEX NUT NYLOCK ½-13	8
25	234	HEX NUT NYLOCK 1-8	3
26	235	HEX NUT CENTER LOCK ¼-20 GRADE 5	5
27	236	HEX NUT CENTER LOCK 5/16-18 GRADE 5	2
34	250	LOCK WASHER 3/8	33
36	256	FLAT WASHER 1/4	5
43	590153	CAP SCREW 1-8 X 6-3/4 GRADE 5	2
45	592	CARRIAGE BOLT 3/8-16 X 1	31
49	767	HEX NUT FLANGE ¼-20 GRADE 5	28
50	800	FLANGED HEAD CAP SCREW ¼-20 X 3/4	23
56	819	FLANGED HEAD CAP SCREW ½-13 X 2 GRADE 8	28
57	820	FLANGED LOCK HEX NUT ½-13 GRADE 8	28

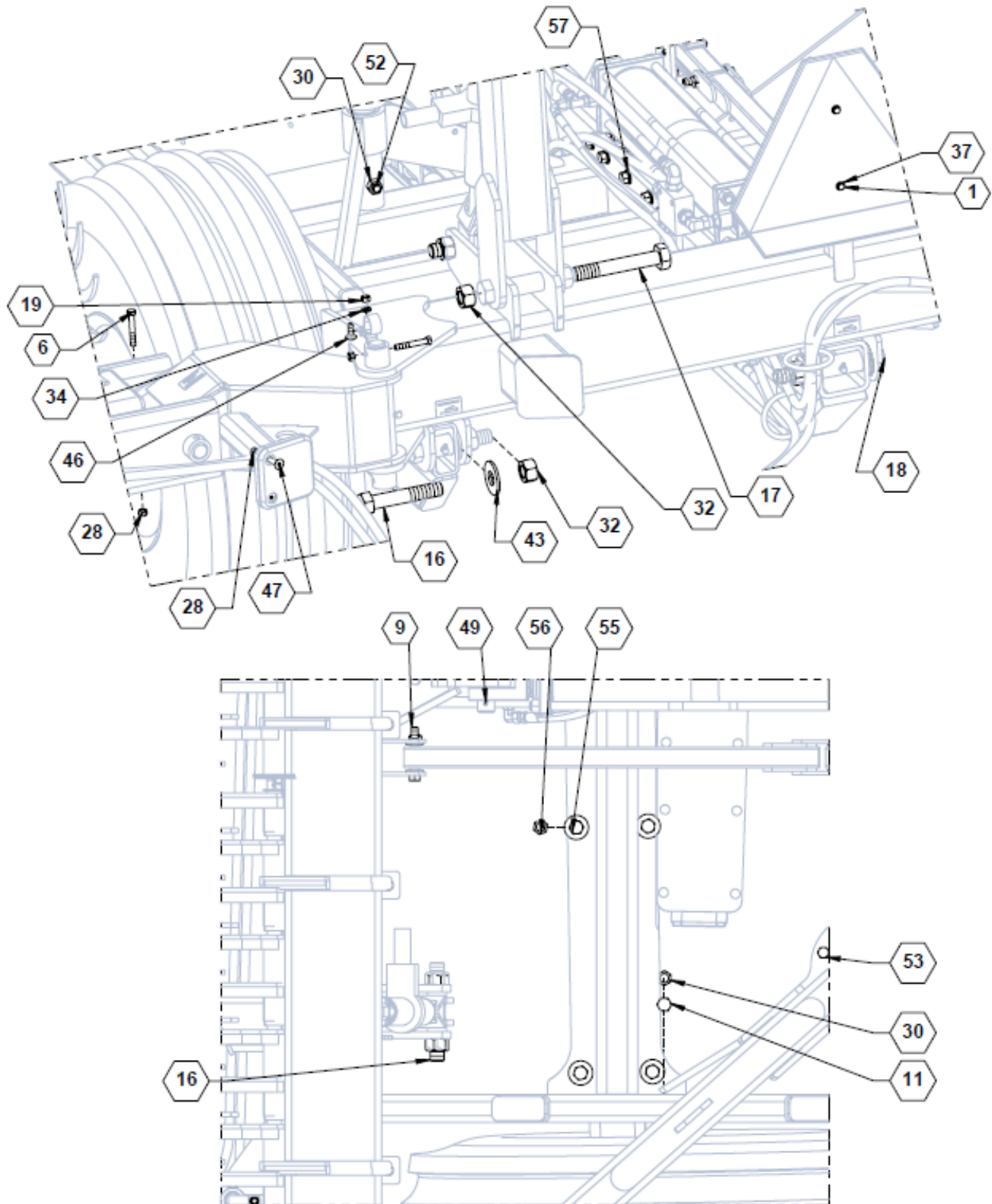
Base Rotary Hoe Assembly Parts List



Base Rotary Hoe Assembly

ITEM	PART NO.	DESCRIPTION	QTY
5	129	CAP SCREW 3/8-16 X 1-1/2 GRADE 5	2
12	189	CAP SCREW 3/4-10 X 4-1/2 GRADE 5	8
13	192	CAP SCREW 3/4-10 X 6 GRADE 5	3
16	205	CAP SCREW 1-8 X 5-1/2 GRADE 5	4
28	237	CENTER LOCK HEX NUT 3/8-16	10
30	240	CENTER LOCK HEX NUT 5/8-11 GRADE 5	198
31	241	CENTER LOCK HEX NUT 3/4-10	73
32	242	CENTER LOCK HEX NUT 1-8	7
33	248	LOCK WASHER 3/4	4
37	260	FLAT WASHER 1/2	4
38	261	FLAT WASHER 5/8	24
39	262	FLAT WASHER 3/4	16
41	473	CAP SCREW 5/8-11 X 7 GRADE 5	8
42	590146	FLAT WASHER 1"	11
46	726	FLANGED HEAD CAP SCREW 3/8-16 X 1-1/4	4
47	737	CAP SCREW 8-1.25 X 20MM GRADE 8.8	4
51	812	CAP SCREW 5/8-11 X 3 GRADE 8	2
52	813	CAP SCREW 1/2-20 X 1-1/2 GRADE 5	8

Base Rotary Hoe Assembly

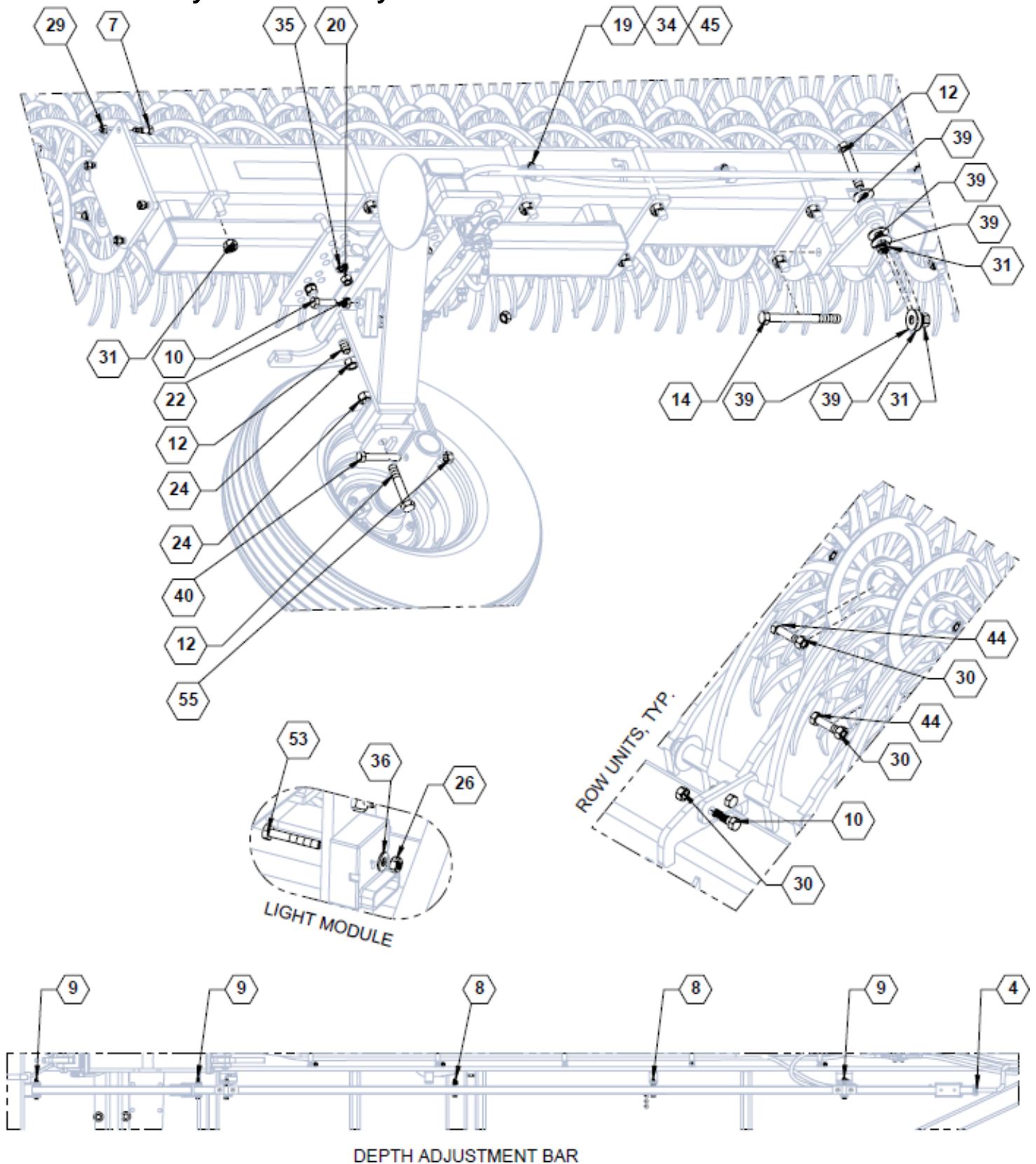


Base Rotary Hoe Assembly

ITEM	PART NO.	DESCRIPTION	QTY
1	101	CAP SCREW ¼-20 X ¾ GRADE 5	7
6	131	CAP SCREW 3/8-16 X 2-1/2 GRADE 5	4
9	157	CAP SCREW ½-13 X 3-1/2 GRADE 5	6
11	173	CAP SCREW 5/8-11 X 3-1/2 GRADE 5	2
16	205	CAP SCREW 1-8 X 5-1/2 GRADE 5	4
17	207	CAP SCREW 1-8 X 6-1/2 GRADE 5	2
18	209	CAP SCREW 1-8 X 7-1/2 GRADE 5	1
19	213	HEXT NUT 3/8-16	31
28	237	CENTER LOCK HEX NUT 3/8-16	10
30	240	CENTER LOCK HEX NUT 5/8-11 GRADE 5	198
32	242	CENTER LOCK HEX NUT 1-8	7
34	250	LOCK WASHER 3/8	33
37	260	FLAT WASHER 1/2	4
43	590153	CAP SCREW 1-8 X 6-3/4 GRADE 5	2
46	726	FLANGED HEAD CAP SCREW 3/8-16 X 1-1/4	4
47	737	CAP SCREW 8-1.25 X 20MM GRADE 8.8	4
49	767	FLANGED HEX NUT ¼-20 GRADE 5	28
52	813	CAP SCREW ½-20 X 1-1/2 GRADE 5	8
53	814	CAP SCREW ¾ X 1-3/4 GRADE 5	3
55	817	CENTER LOCK HEX NUT 5/8-11 GRADE 8	11
56	819	FLANGED CAP SCREW ½ X 2 GRADE 8	28
57	820	FLANGED LOCK HEX NUT ½-13 GRADE 8	28

ILLUSTRATED PARTS LIST

Base Rotary Hoe Assembly Parts List

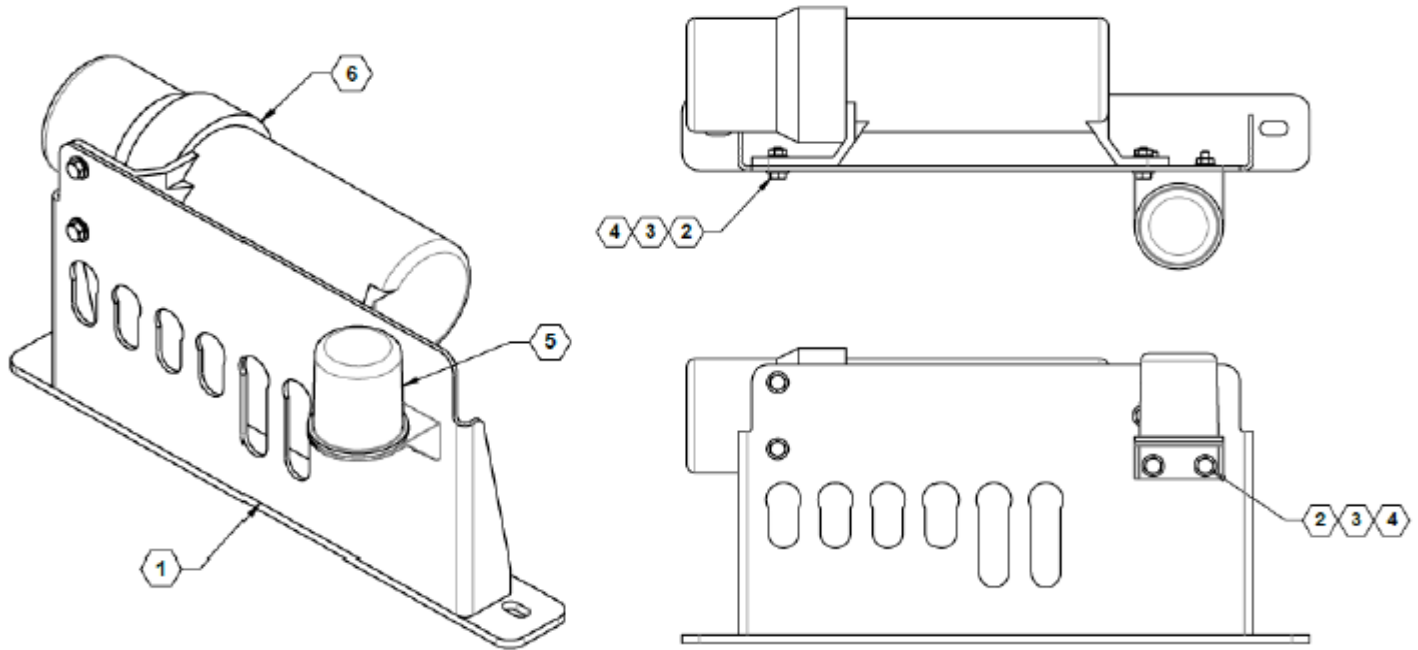


Base Rotary Hoe Assembly

ITEM	PART NO.	DESCRIPTION	QTY
4	128	CAP SCREW 3/8-16 X 1 GRADE 5	2
7	153	CAP SCREW ½-13 X 1-1/2 GRADE 5	8
8	156	CAP SCREW ½-13 X 3 GRADE 5	2
9	157	CAP SCREW 5/8-11 X 3-1/2 GRADE 5	6
10	170	CAP SCREW 5/8-11 X 2 GRADE 5	16
12	189	CAP SCREW ¾-10 X 4-1/2 GRADE 5	8
14	196	CAP SCREW ¾-10 X 8 GRADE 5	2
19	213	HEXT NUT 3/8-16	31
20	216	HEX NUT 5/8-11	8
22	224	JAM HEX NUT 5/8-11	22
24	233	NYLOCK HEX NUT ¾-10	4
26	235	CENTER LOCK HEX NUT ¾-20 GRADE 5	5
29	239	CENTER LOCK HEX NUT ½-13 GRADE 5	8
30	240	CENTER LOCK HEX NUT 5/8-11 GRADE 5	198
31	241	CENTER LOCK HEX NUT ¾-10 GRADE 5	73
34	250	LOCK WASHER 3/8	33
35	253	LOCK WASHER 5/8	8
36	256	FLAT WASHER ¾	5
39	262	FLAT WASHER 3/4	16
40	373	CAP SCREW 5/8-11 X 4 GRADE 8	2
44	590347	CAP SCREW 5/8-11 X 2.75 GRADE 5	174
45	592	CARRIAGE BOLT 3/8-16 X 1	31
53	814	CAP SCREW ¾ X 1-3/4 GRADE 5	3
55	817	CENTER LOCK HEX NUT 5/8-11 GRADE 8	11

Base Toolbar Assembly

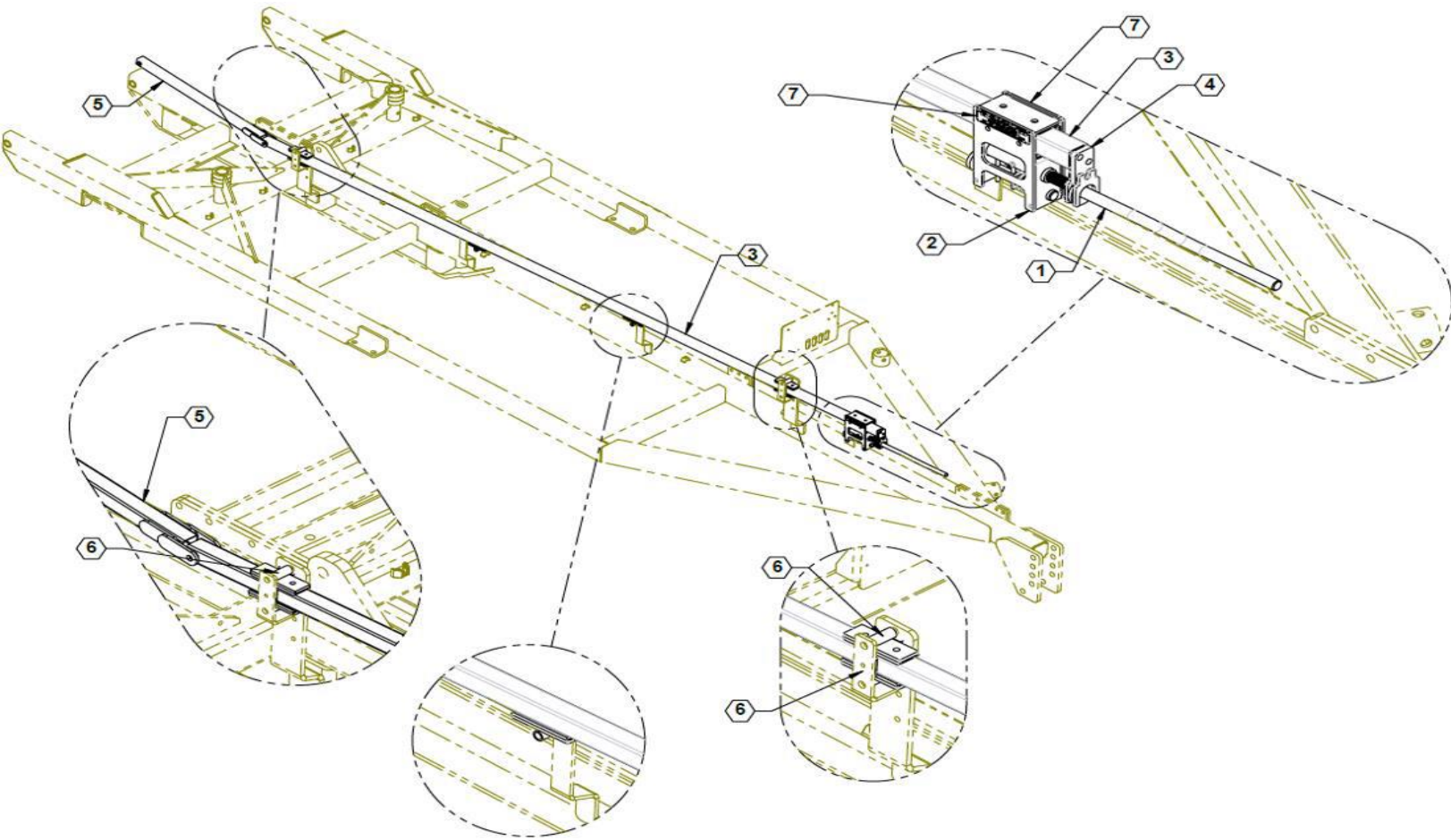
Manual Holder Assembly



Parts List 34752: Manual Holder Assembly

ITEM	PART NO.	QTY.	DESCRIPTION
1	34753	1	WLD MNT, MANUAL HOLDER
2	596101M	5	BOLT, HH 1/4-20X3/4 GR5 MAGNI
3	596256M	5	WASHER, FLAT 1/4 USS MAGNI
4	596767M	5	NUT, HEX FLANGE 1/4-20 MAGNI
5	740018	1	LIGHT HARNESS HOLDER
6	750048	1	MANUAL HOLDER

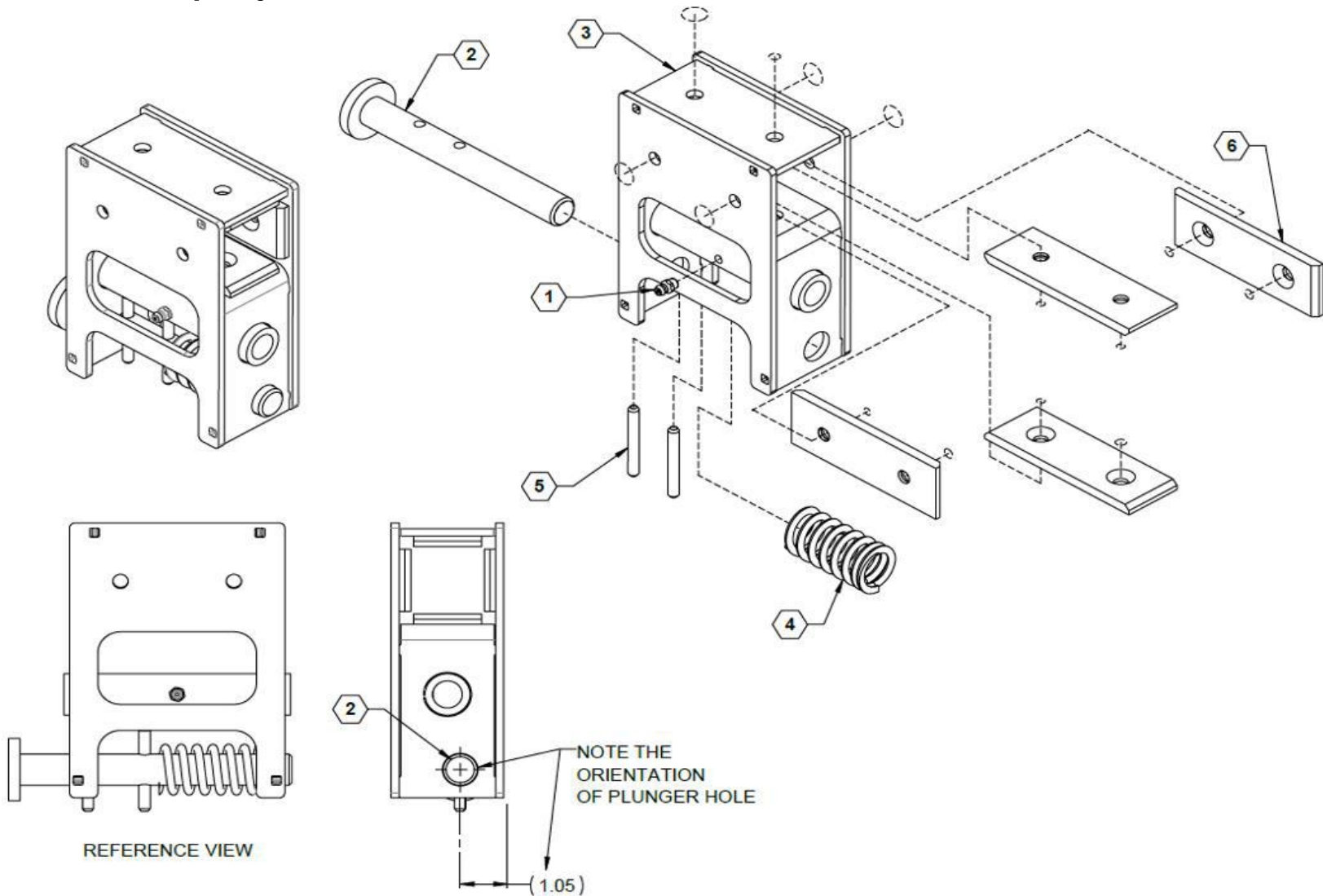
Toolbar Depth Adjustment



Parts List 28090: Toolbar Depth Adjustment

ITEM	PART NO.	QTY.	DESCRIPTION
1	28080	1	WLD MNT, ADJUST HANDLE
2	28089	1	ASSY, BUMP ADJUST
3	28091	1	WLD MNT, DEPTH TUBE
4	28096	1	WLD MNT, BASE ANCHOR
5	28100	1	WLD MNT, DEPTH FRONT TUBE
6	28134	4	PAD, SIDE BRACE
7	800262	2	DECAL, DEPTH ADJUSTMENT
8	28103	6	WLD MNT, SLIDE PIVOT
9	590416	6	POLY, DEPTH ADJUST SLIDE

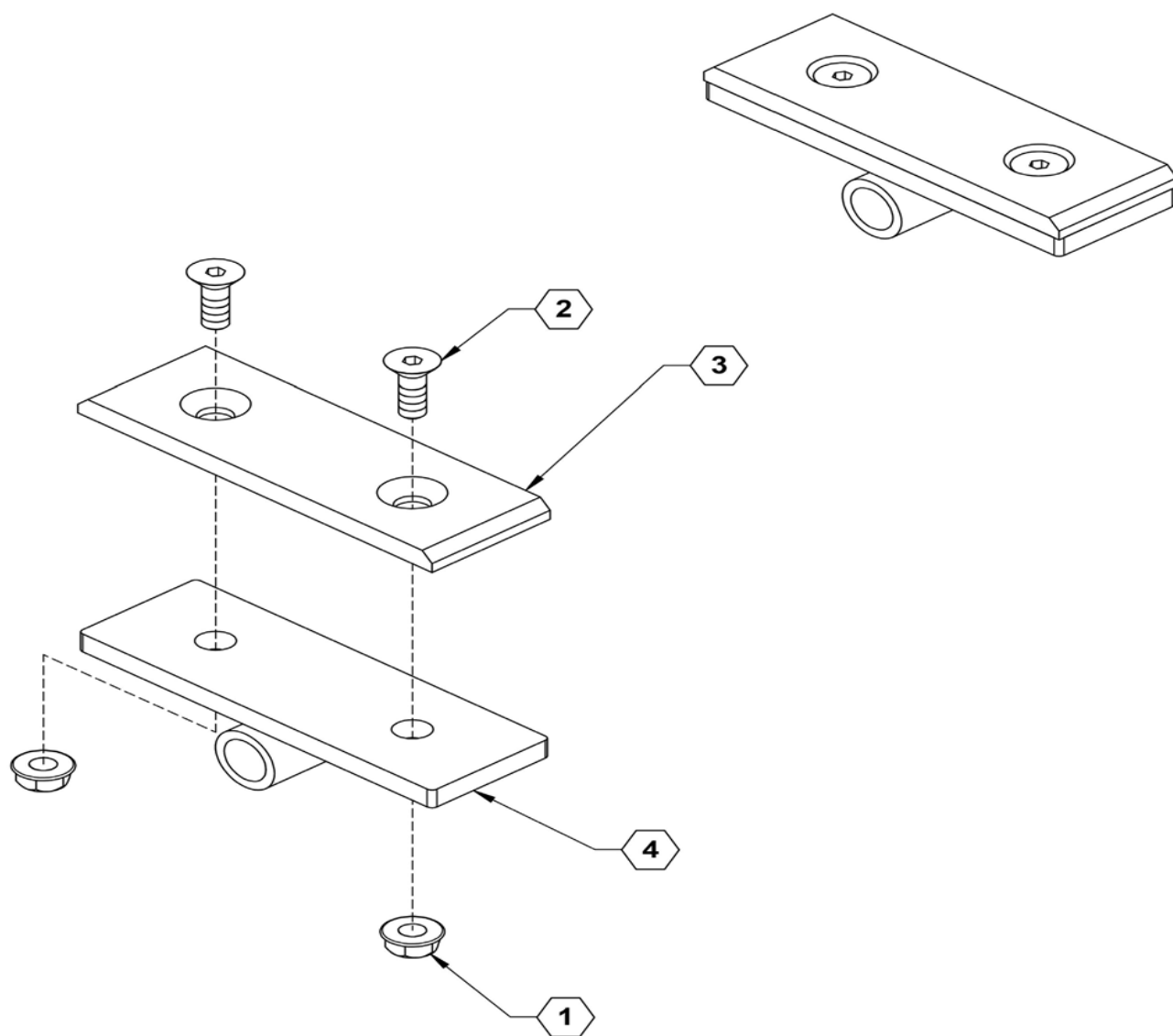
Bump Adjust Box



Parts List 28090: Bump Adjust Box

ITEM	PART NO.	QTY.	DESCRIPTION
1	759	1	ZERK, 1/4-28 STRAIGHT PIPE THREAD
2	28087	1	WLDMNT, PLUNGER
3	28088	1	WLDMNT, BUMP ADJUST
4	28135	1	SPRING, PUSH BUTTON VALVE
5	590299	2	PIN, SPRING, .250 X 2.00, CPZ
6	590416	4	POLY, DEPTH ADJUST SLIDE

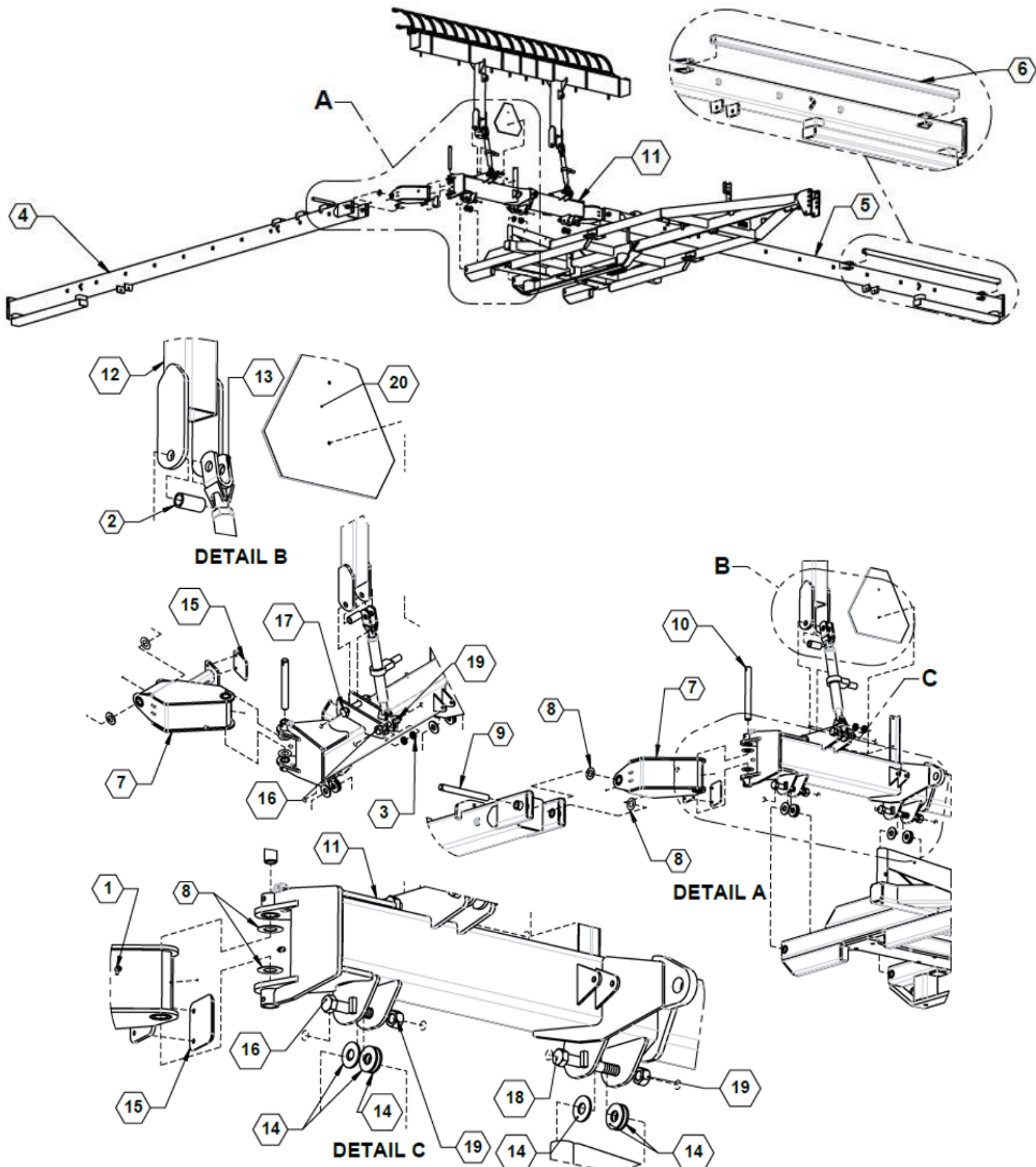
Base Toolbar Assembly



Parts List 28090: Depth Adjustment Slide Pivot

ITEM	PART NO.	QTY.	DESCRIPTION
1	767	2	NUT, FLANGE, 1/4-20 GR5 ZINC
2	800	2	FHSCS, 1/4-20 X 3/4 ZINC
3	28095	1	POLY, DEPTH ADJUST SLIDE
4	28103	1	WLDMNT, SLIDE PIVOT

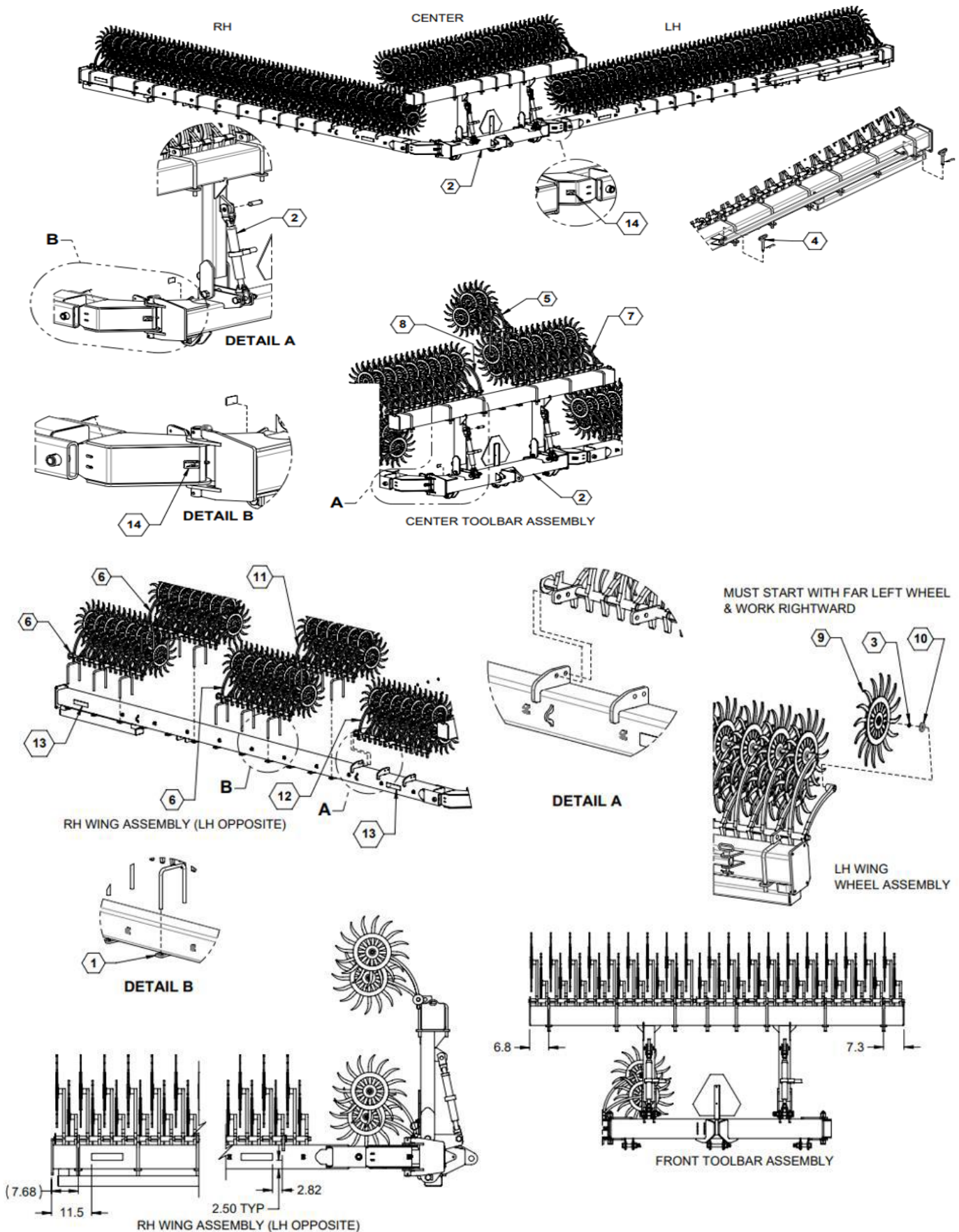
BASE TOOLBAR



BASE TOOLBAR

ITEM	PART NO.	QTY.	DESCRIPTION
1	761	4	ZERK, 90°, 1/4-28 STRAIGHT PIPE THREAD
2	27537	2	BUSHING, LONG SPACER
3	27538	4	BUSHING, SHORT SPACER
4	27934	1	WLDMNT, RH MAIN WING
5	27935	1	WLDMNT, LH MAIN WING
6	27959	1	TUBE, CROSS BAR
7	27999	2	FLEX JOINT WLDMNT
8	28037	8	1.5ID x 2.5OD THRUST WASHER
9	28050	2	PIN, 1.25 DIA
10	28058	2	PIVOT PIN
11	34446	1	CENTER TOOLBAR WLDMT
12	34447	1	WLDMNT, CENTER TOOLBAR
13	35908	2	REINFORCED 24" TURNBUCKLE
14	590146	9	WASHER, FLAT 1" ZINC
15	590265	2	PLATE, WEAR
16	596205M	4	BOLT, HEX 1-8 X 5-1/2 GR5 MAGNI
17	596207M	2	BOLT, HH 1-8 X 6-1/2 G5 MAGNI
18	596209M	1	BOLT, HH 1-8 X 7-1/2 GR5 MAGNI
19	596242	7	NUT, 1-8 CENTERLOCK, ZP
20	790017	1	SIGN, SMV PLASTIC MOLDED

BASE TOOLBAR

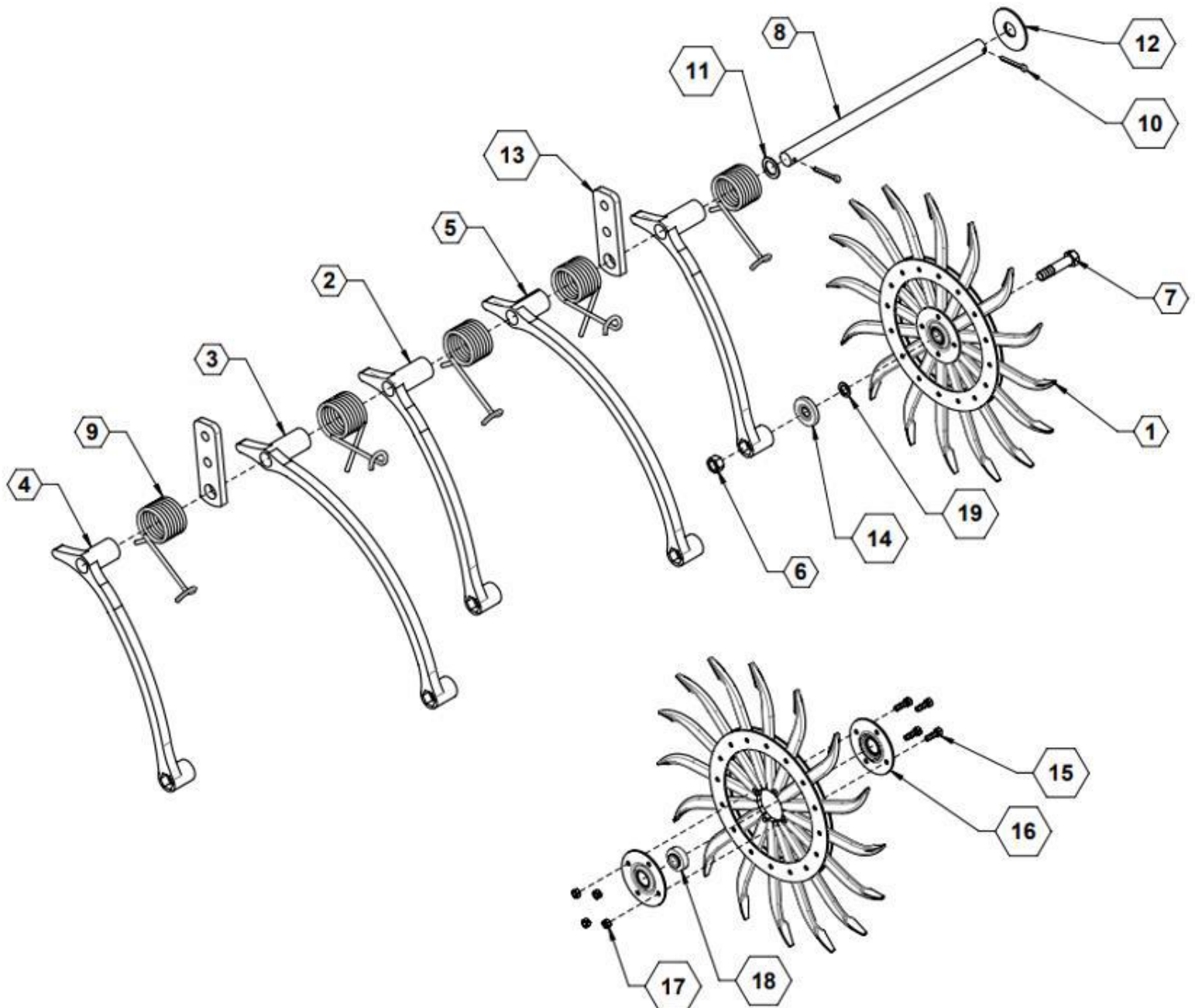


BASE TOOLBAR

ITEM	PART NO.	QTY.	DESCRIPTION
1	27542	32	PLATE, ROW UNIT BOLT MOUNT
2	27910	1	ASSY, BARE BASE TOOLBAR
3	590466	174	SPACER, 5/8ID, 1OD, 14GA, 2527-563
4	790043	2	HITCH PIN, 5/8" X 4"
5	790066	1	YETTER 5 WHEEL AXLE ASSY
6	790067	6	YETTER 14 WHEEL AXLE ASSY
7	790068	1	YETTER 16 WHEEL AXLE ASSY
8	790069	1	YETTER 17 WHEEL AXLE ASSY
9	790071	174	WHEEL, YETTER ROTARY HOE
10	790072	174	BEARING SHIELD, 3400-408
11	790074	2	YETTER 12 WHEEL AXLE ASSY
12	790079	2	YETTER 14 WHEEL TAB MOUNT AXLE ASSY
13	800110	4	DECAL, AMBER, REFLECTOR
14	800287	7	DECAL, GREASE PIVOT POINTS

ILLUSTRATED PARTS LIST

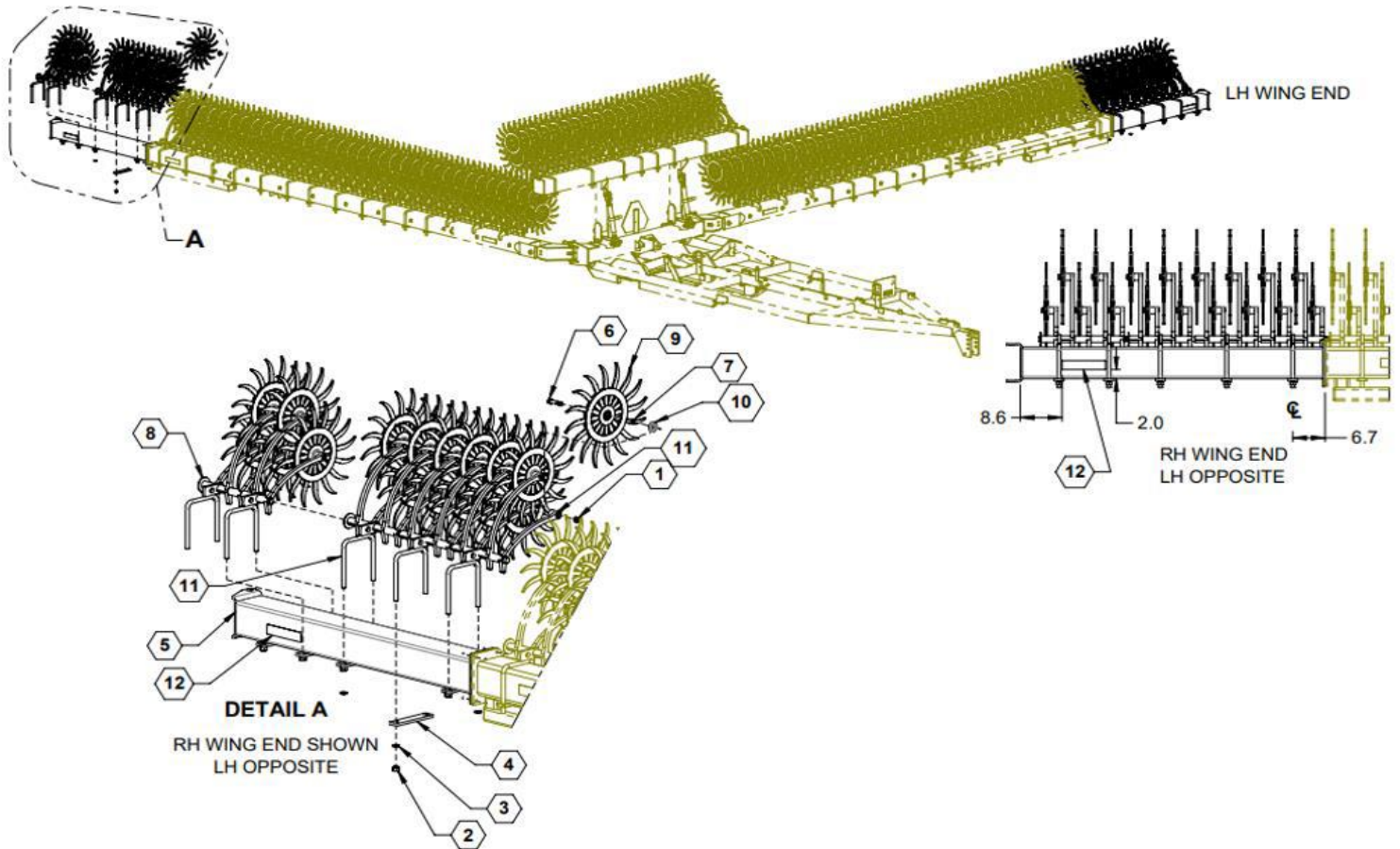
ROTARY HOE WHEEL & ARM



ROTARY HOE WHEEL & ARM

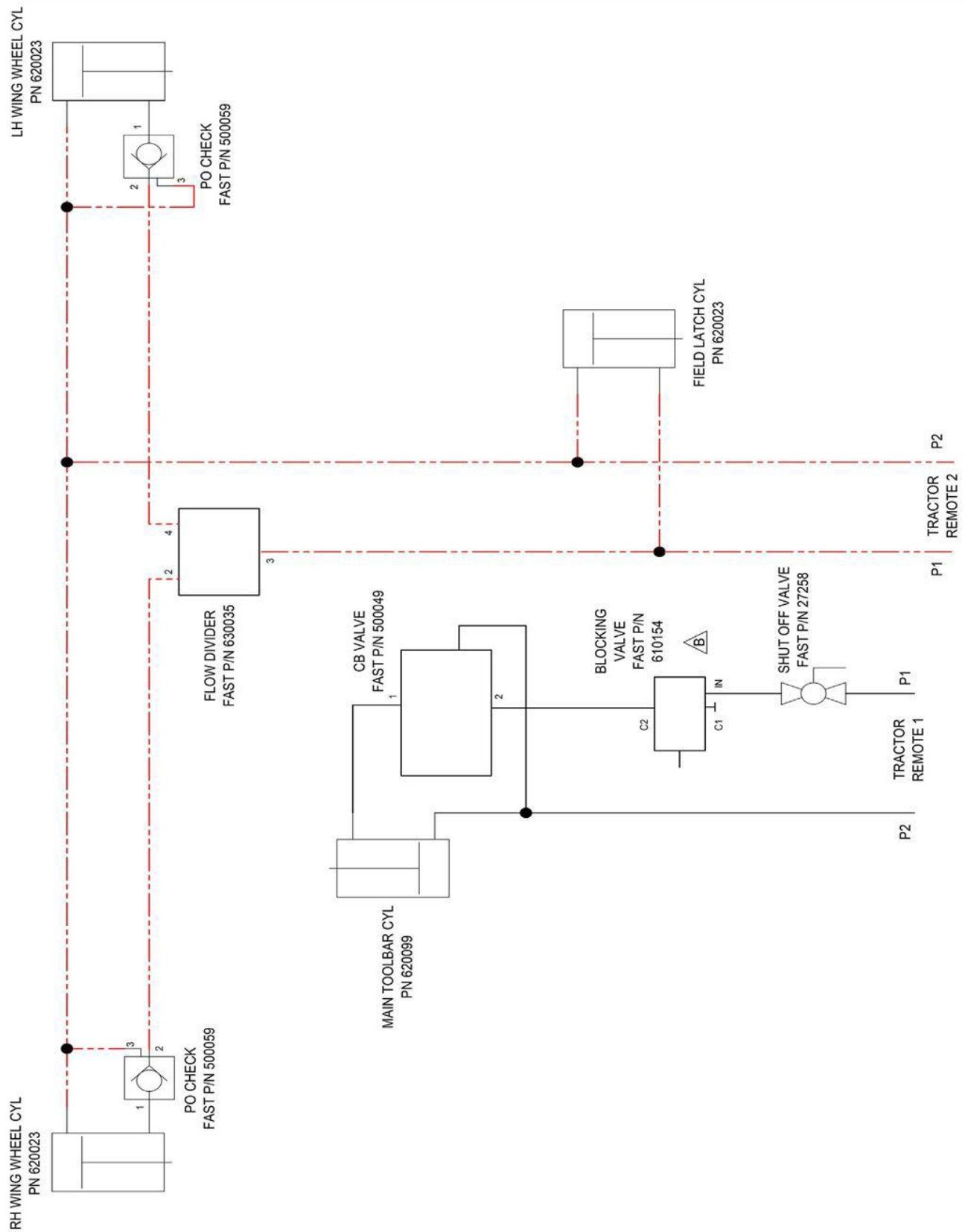
ITEM	PART NO.	QTY.	DESCRIPTION
1*	790071	1	PAINTED WHEEL ASSEMBLY, BLACK
2	2555-119	A/R	SHORT HUB - REAR ARM CASTING
3	2555-117	A/R	LONG HUB - FRONT ARM CASTING
4	2555-118	A/R	SHORT HUB - FRONT ARM CASTING
5	2555-116	A/R	LONG HUB - REAR ARM CASTING
6*	240	A/R	5/8"-11 LOCK HEX NUT, ZP
7*	590347	A/R	5/8"-11 X 2-3/4" HEX HEAD BOLT, GR5 ZP
8	790077	1	5 WHEEL AXLE ASSEMBLY, TAB MOUNT
8	790078	1	12 WHEEL AXLE ASSEMBLY, TAB MOUNT
8	790079	1	14 WHEEL AXLE ASSEMBLY, TAB MOUNT
8	790080	1	16 WHEEL AXLE ASSEMBLY, TAB MOUNT
8	790091	1	17 WHEEL AXLE ASSEMBLY, TAB MOUNT
9	2550-716	A/R	ROTARY HOE TORSION SPRING
10	2531-125	A/R	1/4"X X1-3/4" COTTER KEY. ZP
11	2527-564	A/R	1" ID X 1-1/2" OD X 14GA M.B.
12	3400-383	A/R	3" OD X 1-1/32" ID X 1/8" WASHER
13	28290	A/R	TAB
14*	790072	A/R	BEARING SHIELD
15	2502-203	4	BOLT, 5/16-18 HHCS GR5 ZP
16	3400-341	2	HUB
17	2520-205	4	NUT, 5/16-18 LOCK HEX GR A ZP
18	2550-016	1	BEARING
19	590466	A/R	SPACER, 5/8ID, 1OD, 14GA, 2527-563
			* NOT INCLUDED WITH SECTION ASSEMBLIES ABOVE

60' Toolbar

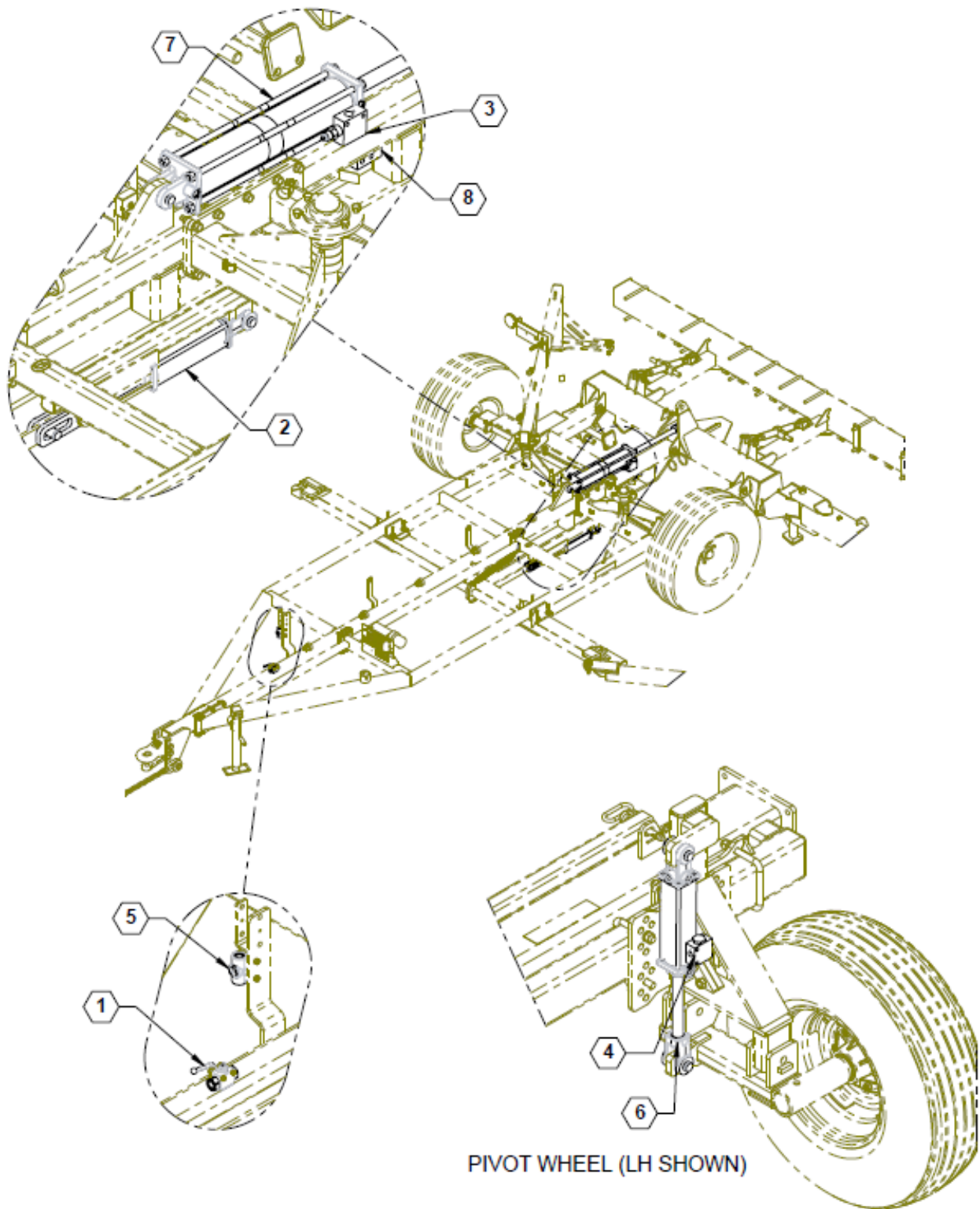


ITEM	PART NO.	QTY.	DESCRIPTION
1	240	34	NUT, CENTER LOCK, 5/8-11 GR5 ZP
2	241	20	NUT, CENTERLOCK, 3/4-10 GR5 ZINC
3	254	20	LOCKWASHER, 3/4 ZINC
4	27542	10	PLATE, ROW UNIT BOLT MOUNT
5	28028	2	WLDMT, LH 18M/60FT WING EXTENSION
6	590347	34	BOLT, HH 5/8-11X2.75 GR5 ZP
7	590466	34	SPACER, 5/8ID, 1OD, 14GA, 2527-563
8	790066	2	YETTER 5 WHEEL AXLE ASSY
9	790071	34	WHEEL, YETTER ROTARY HOE
10	790072	34	BEARING SHIELD, 3400-408
11	790074	2	YETTER 12 WHEEL AXLE ASSY
12	800110	2	DECAL, AMBER, REFLECTOR

HYDRAULIC DIAGRAM



BASE HYDRAULICS



BASE HYDRAULICS

ITEM	PART NO.	QTY.	DESCRIPTION
1	27258	1	BLOCKING VALVE/WITH MOUNTING HOLES
2	28072	1	ASSY, FIELD LATCH CYLINDER
3	500049	1	VALVE, COUNTERBALANCE, SAE -10
4	500059	2	CHECK VALVE, P.O., SINGLE, 3/8 PORTS, 5000PSI, 60GPM
5	610154	1	VALVE, PUSH BUTTON BLOCKING
6	620023	2	CYLINDER, 25TD08-112
7	620099	1	CYLINDER 4 X 20" 1.75" ROD 3000PSI
8	630035	1	FLOW DIVIDER
9	600113	1	ROTARY HOE HYDRAULIC KIT
10	34372	1	BLOCKING VALVE/WITH MOUNTING HOLES

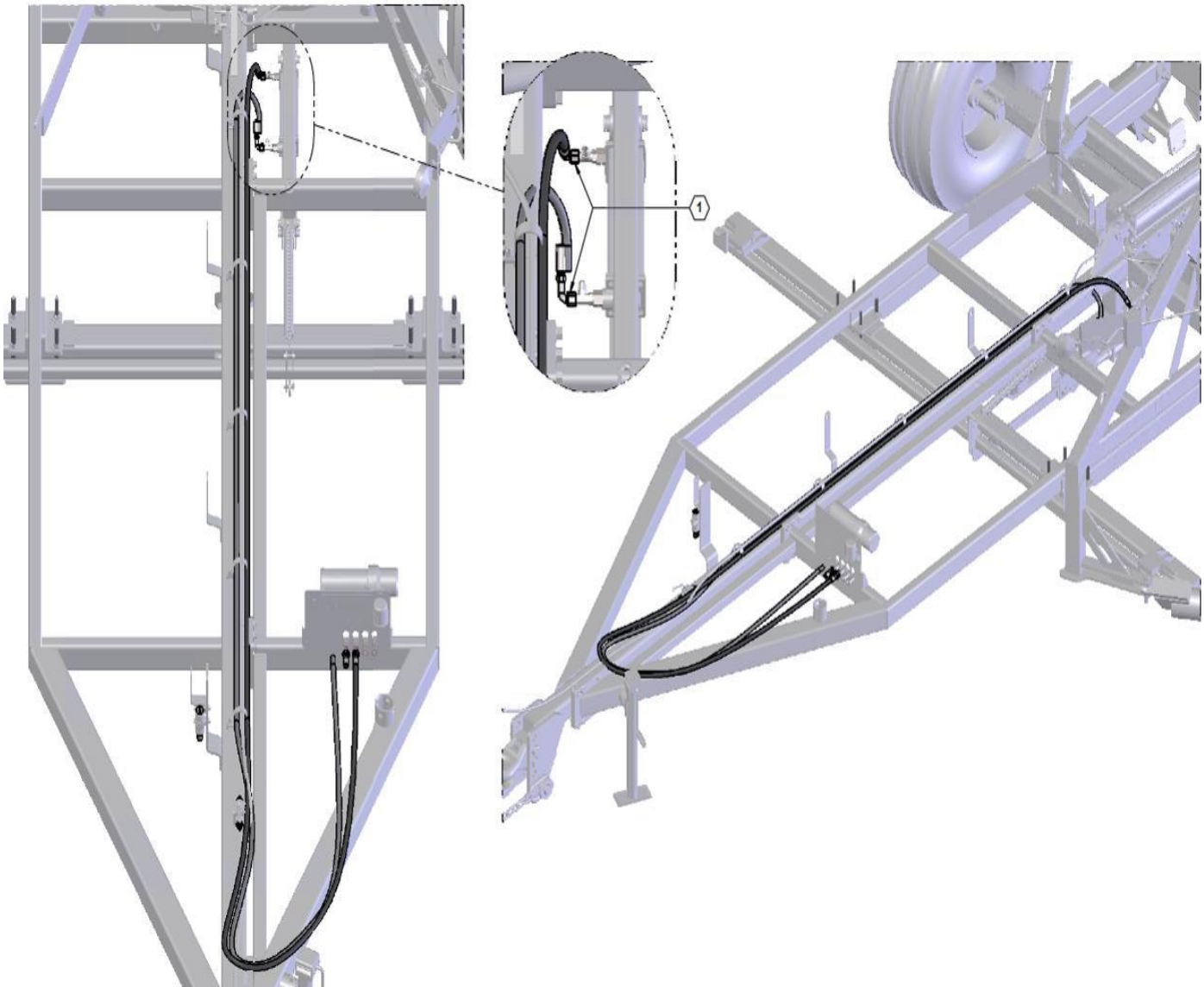
FIELD LATCH CYLINDER

NOTE:

1. REMOVE STANDARD ROD END CLEVIS AND DISCARD - SAVING THE 3/8"-16 SET SCREW
2. INSTALL 28054 SLOTTED CLEVIS WELDMENT
3. REUSE 3/8"-16 SET SCREW FROM STANDARD CLEVIS TO SECURE NEW WELDMENT CLEVIS
4. BOTH STANDARD CYLINDER PINS AND COTTER PINS WILL BE USED

Black = Pressure

Gray = Return



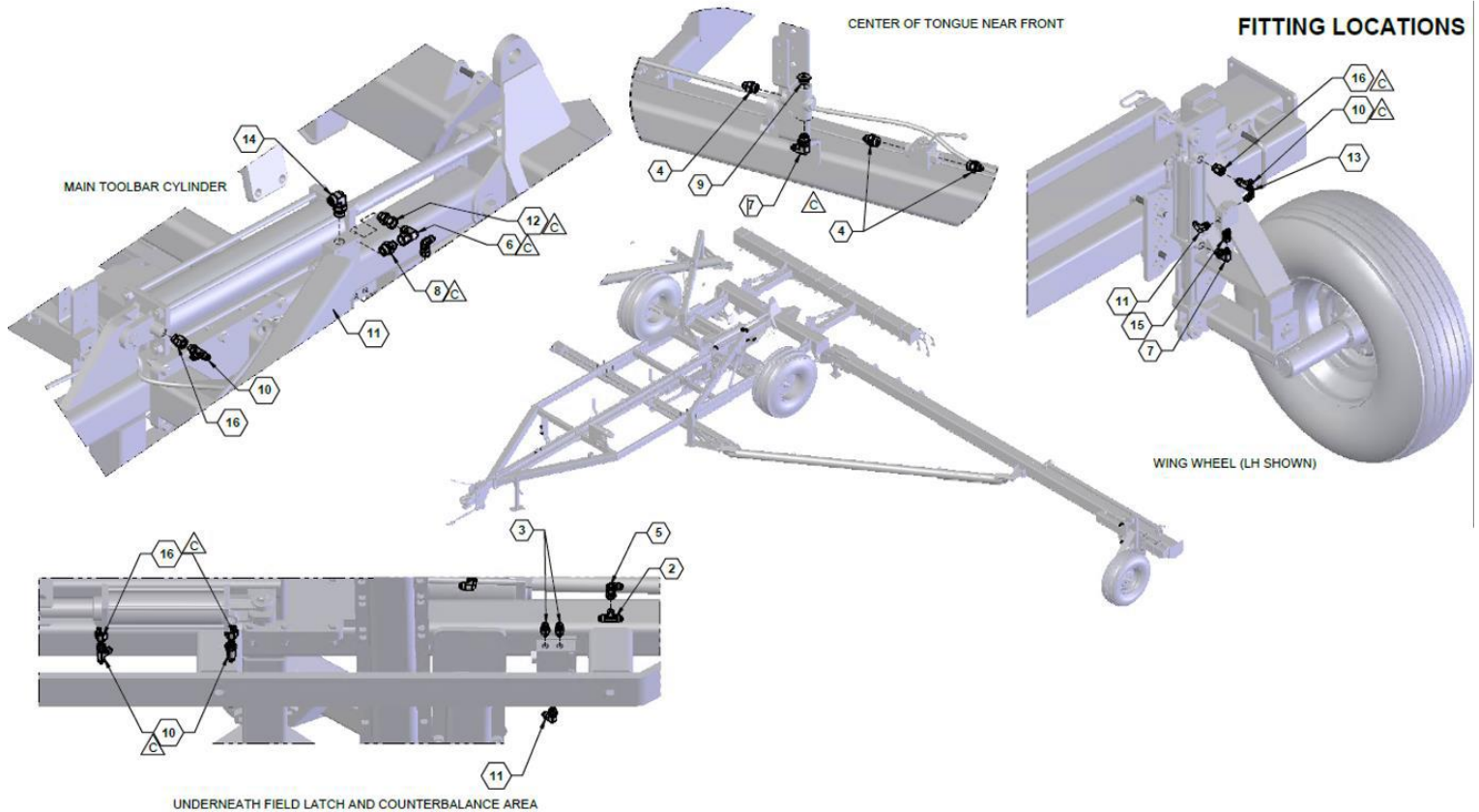
ITEM	PART NO.	QTY.	DESCRIPTION
1	28054	1	WLDMNT, SLOTTED CYL CLEVIS
2	28180	1	TUBE, CYLINDER SPACER
3	620023	1	CYLINDER, 25TD08-112

ITEM	PART NO.	QTY.	DESCRIPTION
1	600113-1	2	HOSE ASSY, 06-6FJX90-8MOR-220

HYDRAULIC DIAGRAM

Black = Pressure

Gray = Return

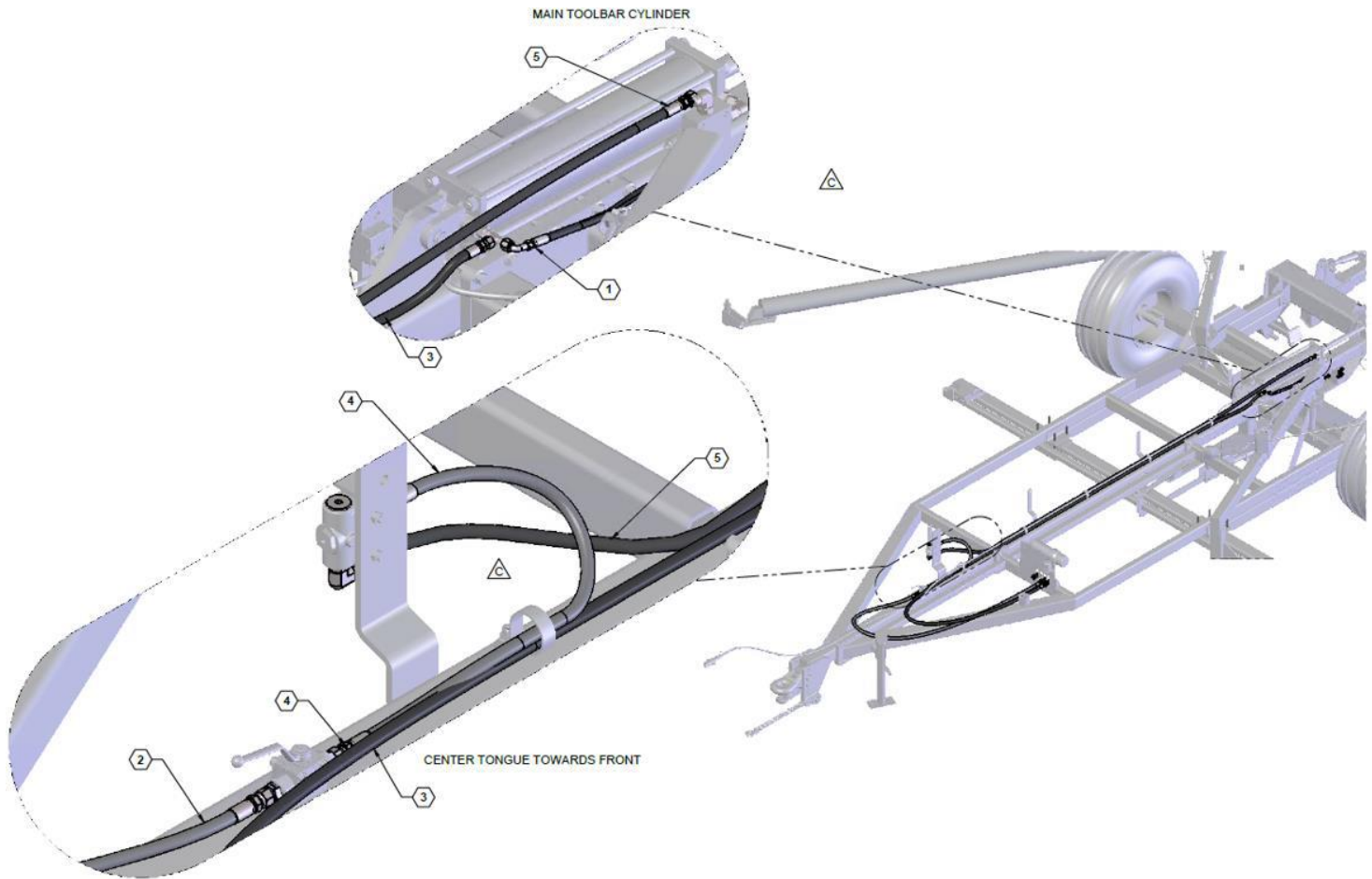


ITEM	PART NO.	QTY.	DESCRIPTION
1	520048	4	PIONEER COUPLER #8 FORB
2	610005	1	JIC UNION TEE #6
3	610010	2	ADAPTER, -6MJIC X -6MORB
4	610011	3	JIC #6 TO ORING #8
5	610023	1	ADAPTER, -6MJIC X -6FJX 90
6	610024	1	JIC #8 90 DEG
7	610030	3	ADAPTER, -6MJIC X -8MORB90
8	610060	1	JIC #8 TO ORING #10
9	610062	1	#8 O-RING PLUG
10	610074	5	JIC TO ORING #6 RUN TEE
11	610078	4	JIC #6 TO #6 ORING 90
12	610083	1	ADAPTER, -8MORB X -8FJX
13	610084	2	ELBOW 90 #4 JIC #4 O-RING
14	610086	1	JIC #8 TO O-RING #10 ELBOW 90°
15	610113	2	#6 O-RING TO #6 JICF SWIVEL
16	610159	5	#8 MORB x #6 FORB REDUCER

CENTER CYLINDER HYDRAULIC DIAGRAM

Black = Pressure

Gray = Return

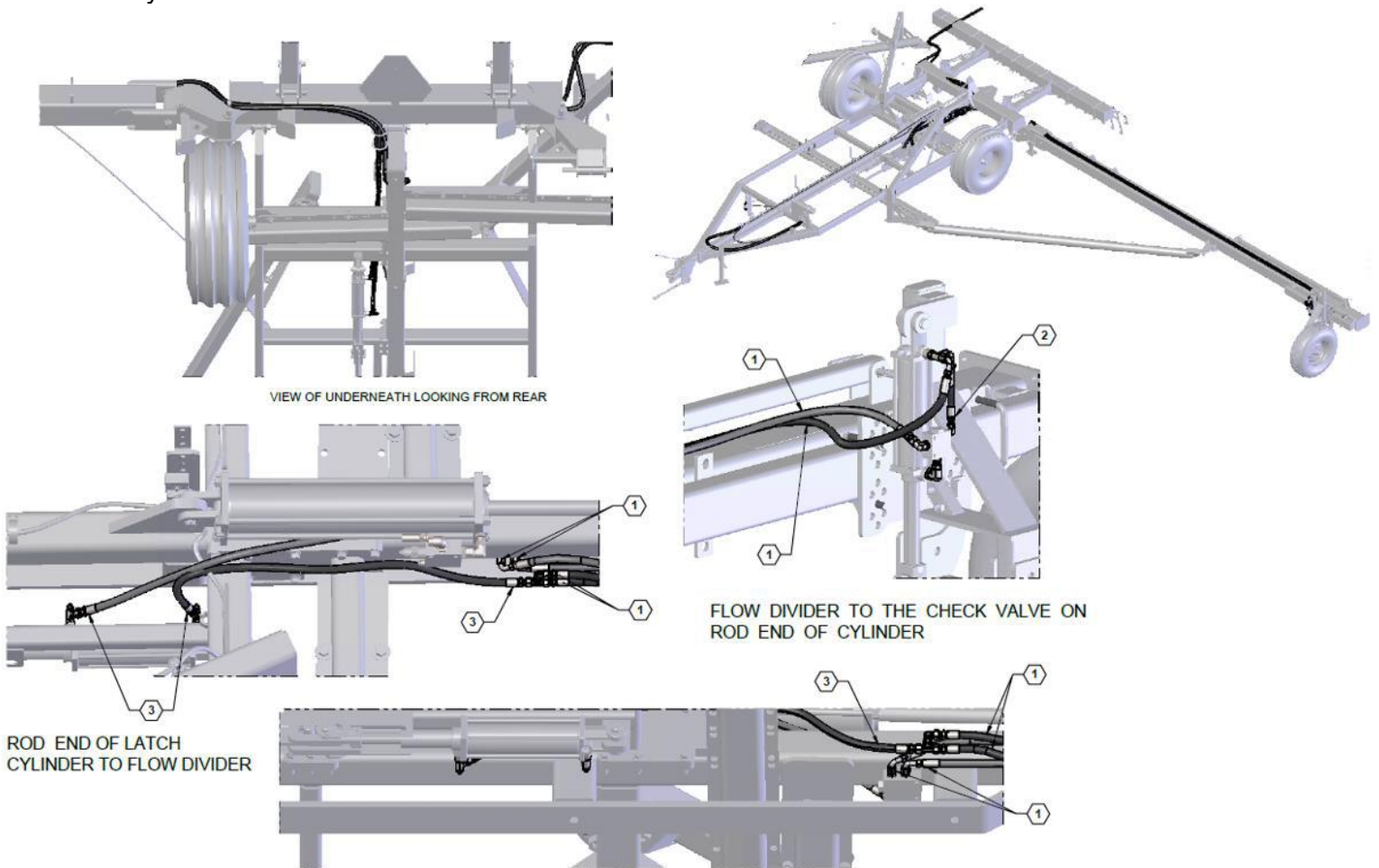


ITEM	PART NO.	QTY.	DESCRIPTION
1	600113-4	1	HOSE ASSY, 04-6FJX90-6FJX-20
2	600113-7	1	HOSE ASSY, 06-6FJX-8MOR-89
3	600113-12	1	HOSE ASSY, 06-6FJX-8MOR-222.5
4	600113-13	1	HOSE ASSY, 06-6FJX-6FJX-32
5	600113-14	1	HOSE ASSY, 06-6FJX-8FJX-139.5

WING FOLD HYDRAULIC DIAGRAM

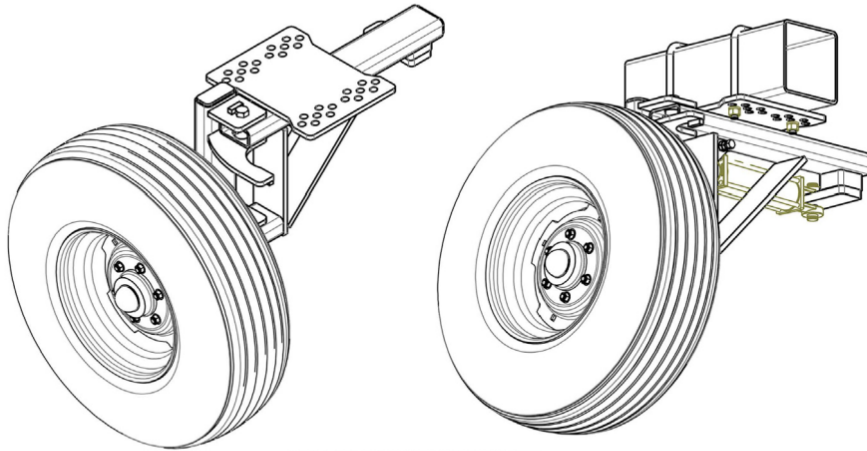
Black = Pressure

Gray = Return

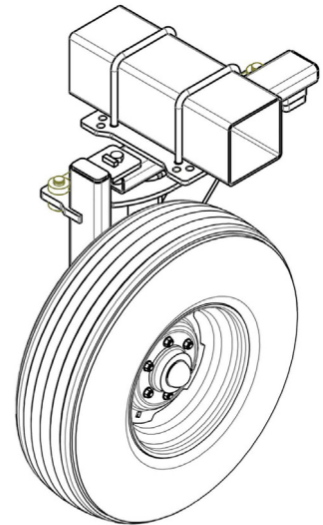


ITEM	PART NO.	QTY.	DESCRIPTION
1	600113-5	4	HOSE ASSY, 06-6FJX90-6FJX-337
2	600113-6	2	HOSE ASSY, 04-6FJX90-4FJX-8
3	600113-8	2	HOSE ASSY, 06-6FJX-6FJX-47

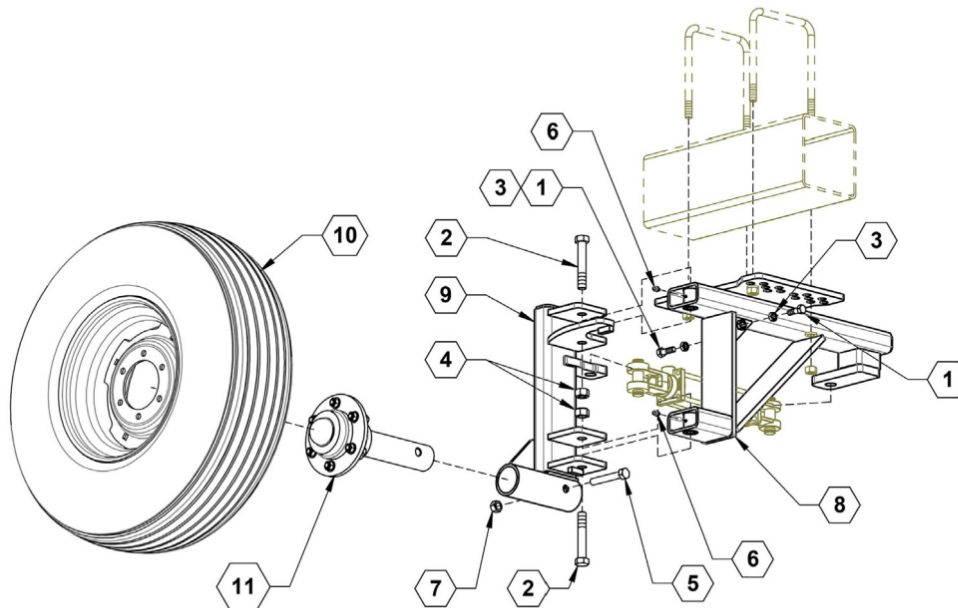
WING WHEEL ASSEMBLY RIGHT HAND



TRANSPORT POSITION



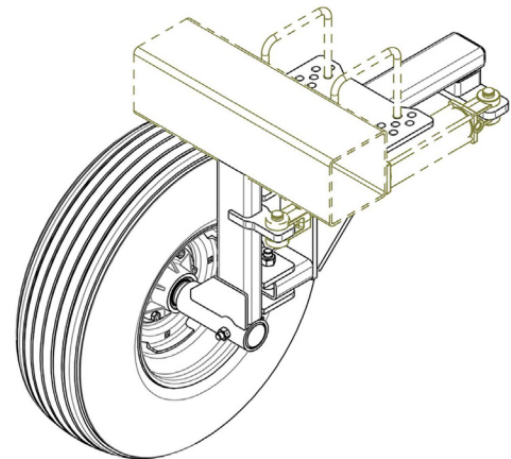
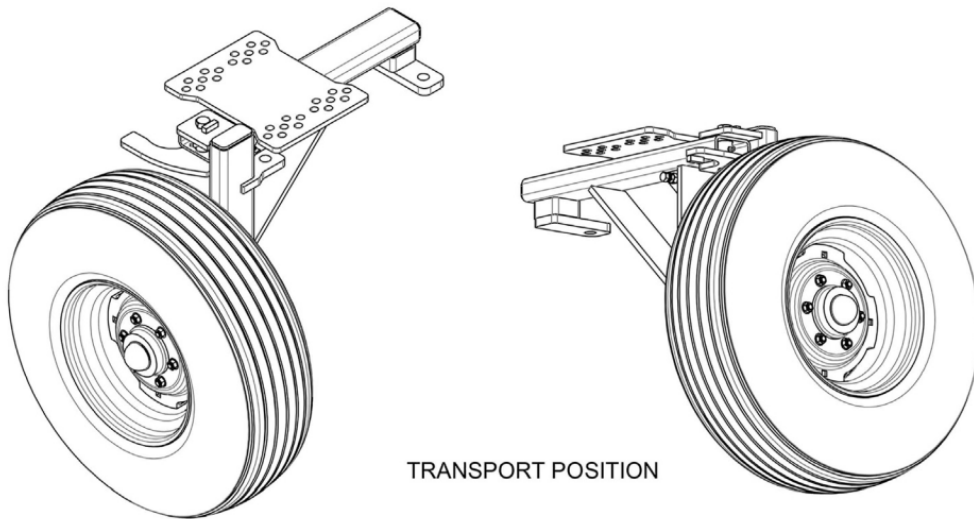
FIELD POSITION



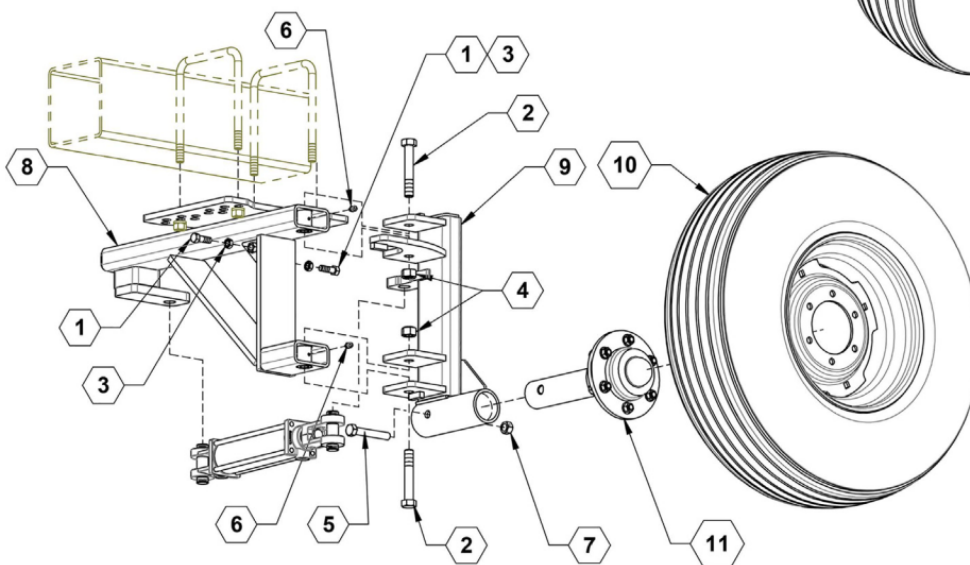
WING WHEEL ASSEMBLY RIGHT HAND

ITEM	PART NO.	QTY.	DESCRIPTION
1	596332M	2	BOLT, HH 5/8-11 X 2-1/4 GR8 MAGNI
2	189	2	BOLT, HH 3/4-10 X 4 1/2 GR5 ZINC
3	224	2	NUT, HEX JAM 5/8-11 GR5 ZINC
4	233	2	NUT, HEX NYLOCK 3/4-10 ZINC
5	373	1	5/8-11 X 4 Gr8 Bolt
6	760	2	ZERK, GREASE 1/4-28 45~
7	817	1	NUT, CENTERLOCK, 5/8-11, GR8 ZINC
8	28018	1	WLDMT, RH REAR TIRE MOUNT
9	28193	1	WLDMT, RH REAR TIRE PIVOT
10	700210	1	WHEEL, TITAN 11L 15 SL, 6 BOLT
11	730113	1	HUB ASSY, N890

WING WHEEL ASSEMBLY LEFT HAND



FIELD POSITION

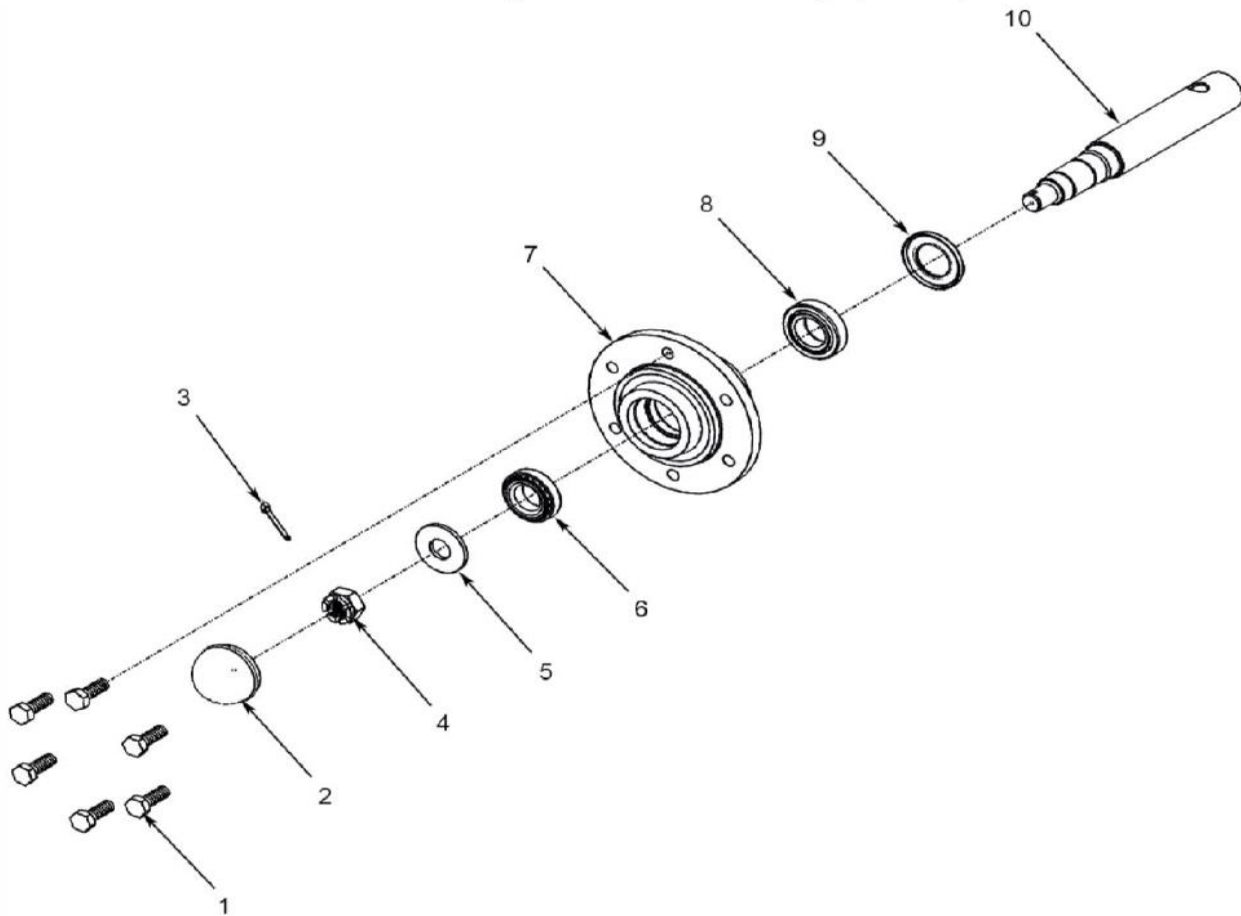


WING WHEEL ASSEMBLY LEFT HAND

ITEM	PART NO.	QTY.	DESCRIPTION
1	596332M	2	BOLT, HH 5/8-11 X 2-1/4 GR8 MAGNI
2	189	2	BOLT, HH 3/4-10 X 4 1/2 GR5 ZINC
3	224	2	NUT, HEX JAM 5/8-11 GR5 ZINC
4	233	2	NUT, HEX NYLOCK 3/4-10 ZINC
5	373	1	5/8-11 X 4 Gr8 Bolt
6	760	2	ZERK, GREASE 1/4-28 45~
7	817	1	NUT, CENTERLOCK, 5/8-11, GR8 ZINC
8	28034	1	WLDMT, LH REAR TIRE MOUNT
9	28192	1	WLDMT, LH REAR TIRE PIVOT
10	700210	1	WHEEL, TITAN 11L 15 SL, 6 BOLT
11	730113	1	HUB ASSY, N890

Hub and Spindle Assembly & Parts List (N709) 730106

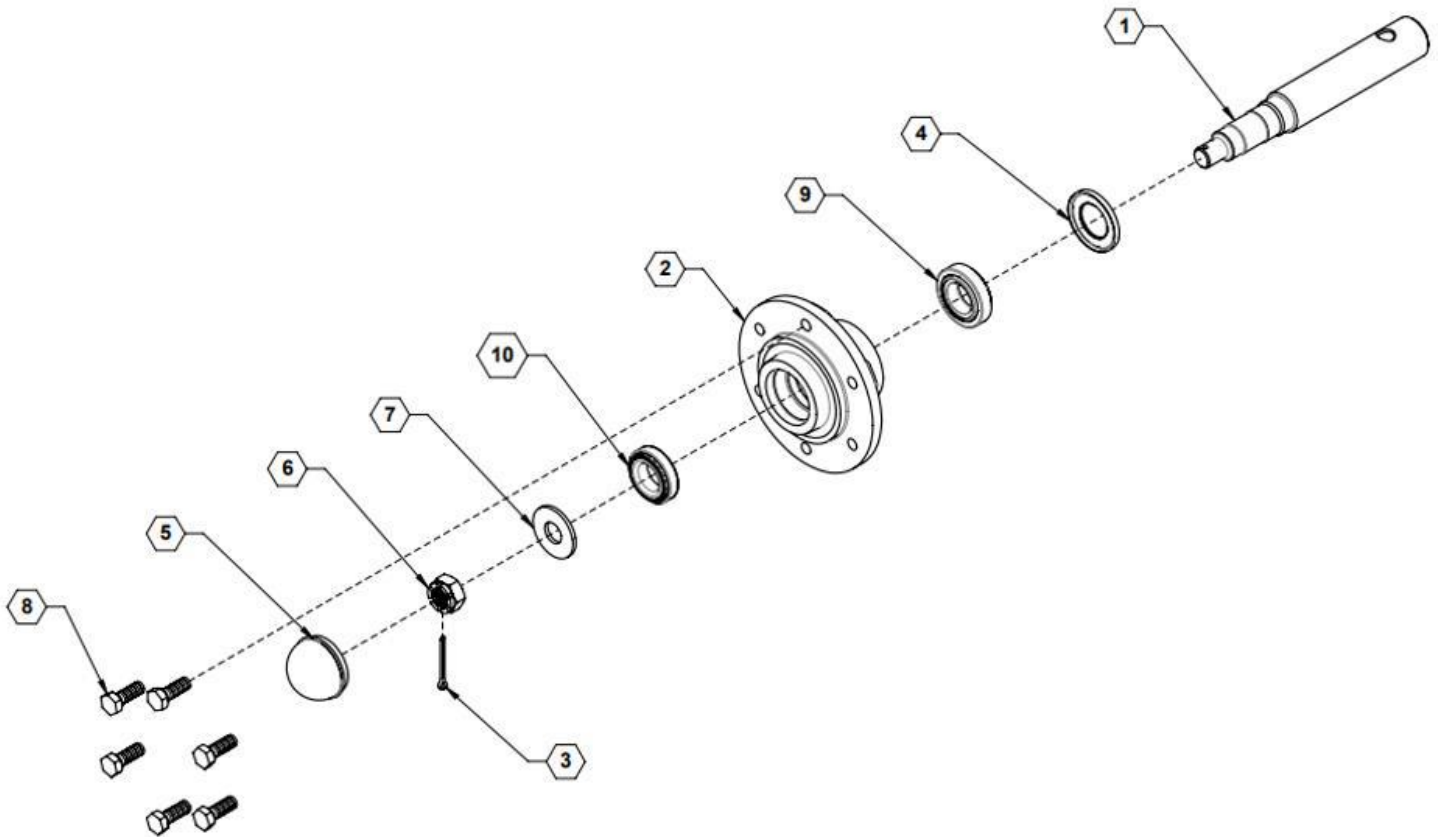
MAIN WING PIVOT **MANUFACTURED 2019-2024**



ITEM	VENDOR PART NO.	PART NO.	QTY.	DESCRIPTION
		730106	1	COMPLETE HUB AND SPINDLE ASSEMBLY (N709)
1	943549		6	BOLT
2	909905		1	CAP
3	N/A	N/A	1	COTTER PIN
4	912952		1	NUT
5	913683		1	WASHER
6	2550-029/2550-027		1	OUTER CUP AND CONE BEARING
7*	730106		1	HUB ASSEMBLY (N709)
8	LM48510		1	INNER CUP AND CONE BEARING
9	906283		1	SEAL
10*	730106		1	SPINDLE INCLUDED WITH 730106 HUB ASSEMBLY

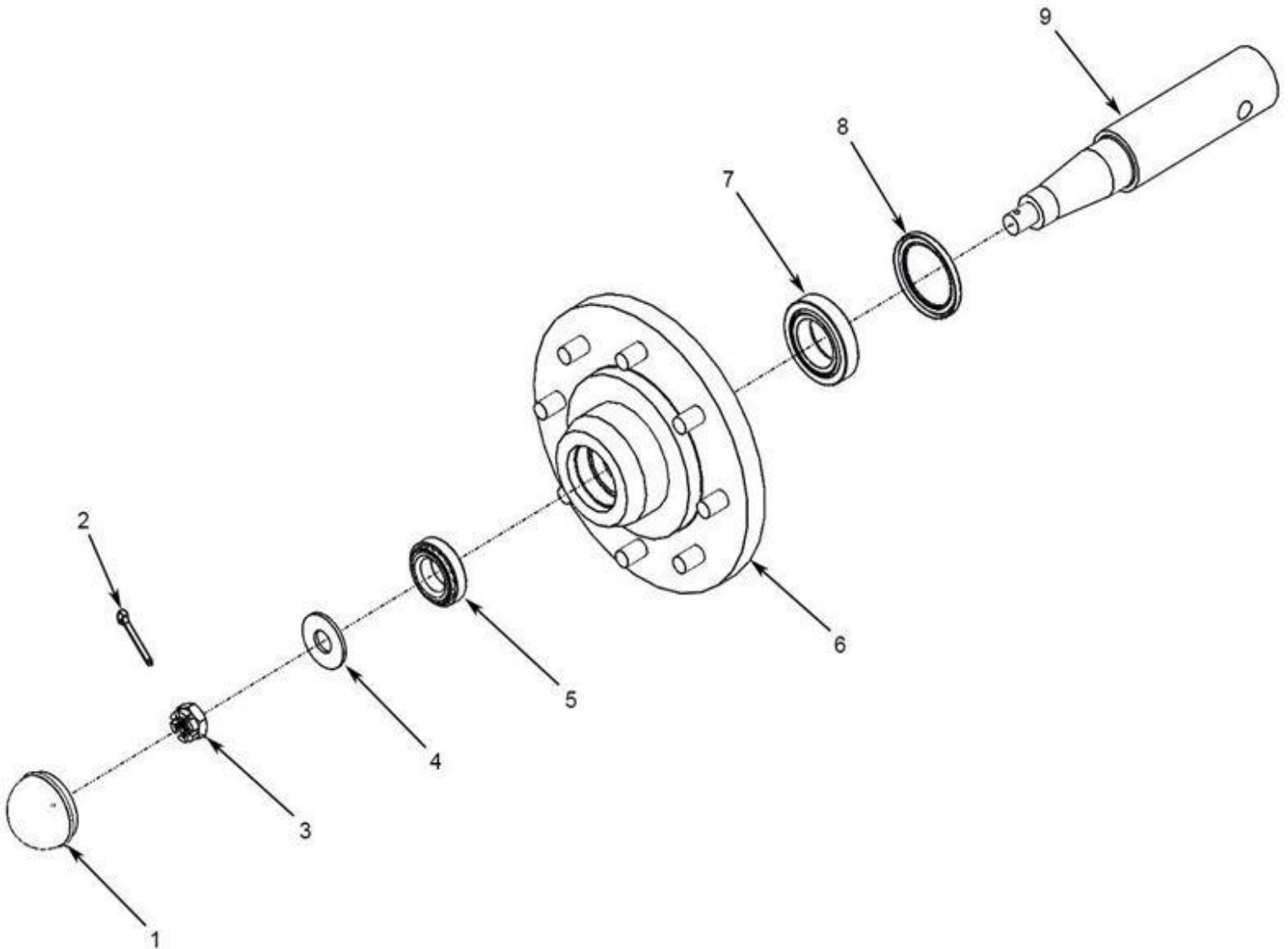
Hub and Spindle Assembly & Parts List (N709) 730140

MAIN WING PIVOT MANUFACTURED 2025- PRESENT



ITEM	VENDOR NO.	PART NO.	QTY.	DESCRIPTION
0		730140	1	COMPLETE HUB AND SPINDLE ASSEMBLY (N709)
1*	730140		1	SPINDLE *INCLUDED WITH 730140
2*	730140		1	HUB N709 *INCLUDED WITH 730140
3	905936		1	COTTER PIN
4	906283		1	SEAL
5	909905		1	HUB CAP
6	912952		1	NUT
7	913683		1	WASHER
8	943549		6	BOLT
9	LM48510		1	INNER CUP AND CONE BEARING
10	LM67010		1	OUTER CUP AND CONE BEARING

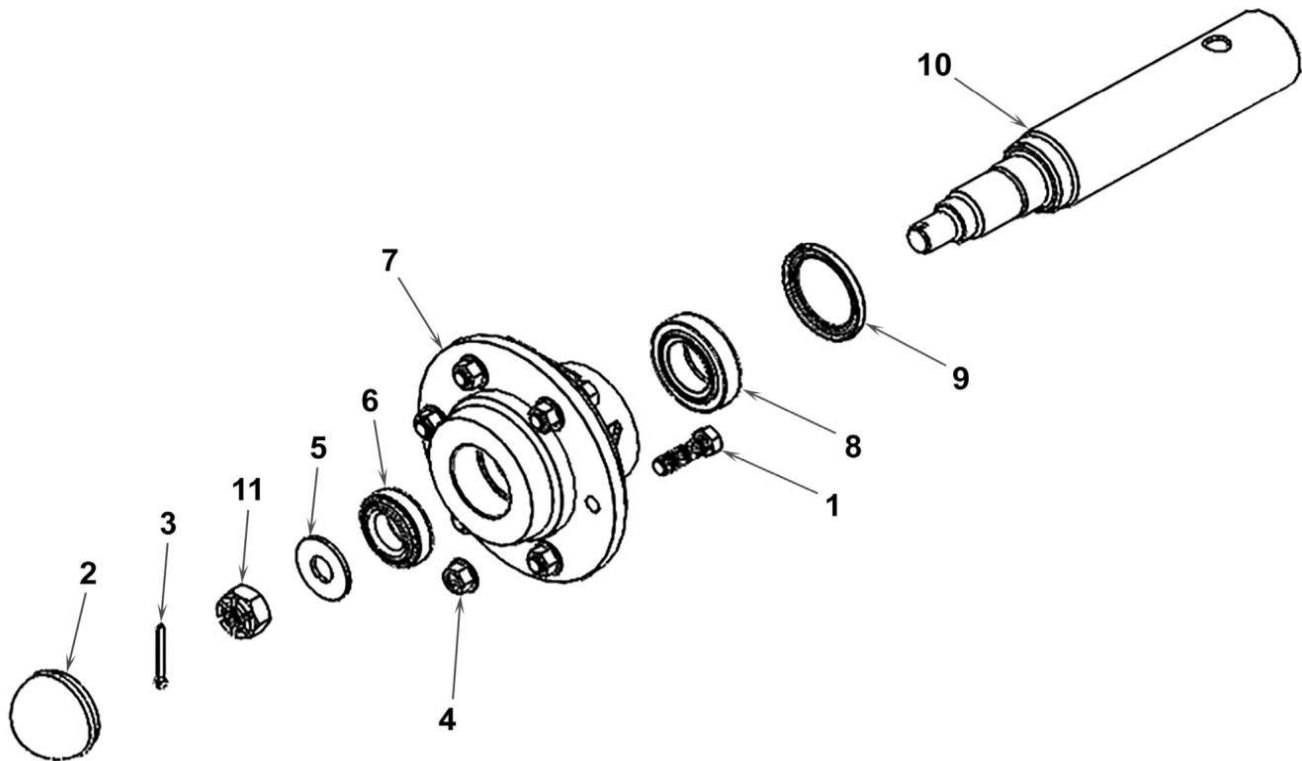
Hub and Spindle Assembly & Parts List (N45-8) 730008



ITEM	VENDOR PART NO.	PART NO.	QTY.	DESCRIPTION
0		730008	1	COMPLETE HUB AND SPINDLE ASSEMBLY (N45-8)
1	909905		1	CAP
2	N/A	N/A	1	COTTER PIN
3	912953		1	NUT
4	913616		1	WASHER
5	2550-029/2550-027		1	OUTER CUP AND CONE BEARING
6	730008		1	HUB
7	LM603049		1	INNER CUP AND CONE BEARING
8	906297		1	SEAL
9	07-08400		1	SPINDLE

ILLUSTRATED PARTS LIST

Hub and Spindle Assembly & Parts List (N890) 730113



Rotary Hoe Wheel Axle Assembly

ITEM	VENDOR PART NO.	PART NO.	QTY	DESCRIPTION
0		730113	1	COMPLETE HUB AND SPINDLE ASSEMBLY (N890)
1	913574		6	STUD
2	909905		1	CAP
3	905936		1	COTTER PIN
4	912927		6	NUT
5	913616		1	WASHER
6	LM67048		1	OUTER CUP AND CONE BEARING
7*	730113		1	HUB N890 * INCLUDED WITH 730113
8	LM501349		1	INNER CUP AND CONE BEARING
9	906985		1	SEAL
10*	730114		1	SPINDLE * INCLUDED WITH 730113
11	912952		1	NUT



A Tradition of Solutions since 1930

Yetter Farm Equipment Co

PO BOX 358 109 S. McDonough

Colchester, IL 62326-0358

Phone: 309-776-4111

Toll Free: 800-447-5777

Email: info@yetterco.com

For updated models and manuals visit the Yetter website:

www.yetterco.com

© Yetter Farm Equipment Co. All Rights Reserved

2565-974_REV_D • 01/2025