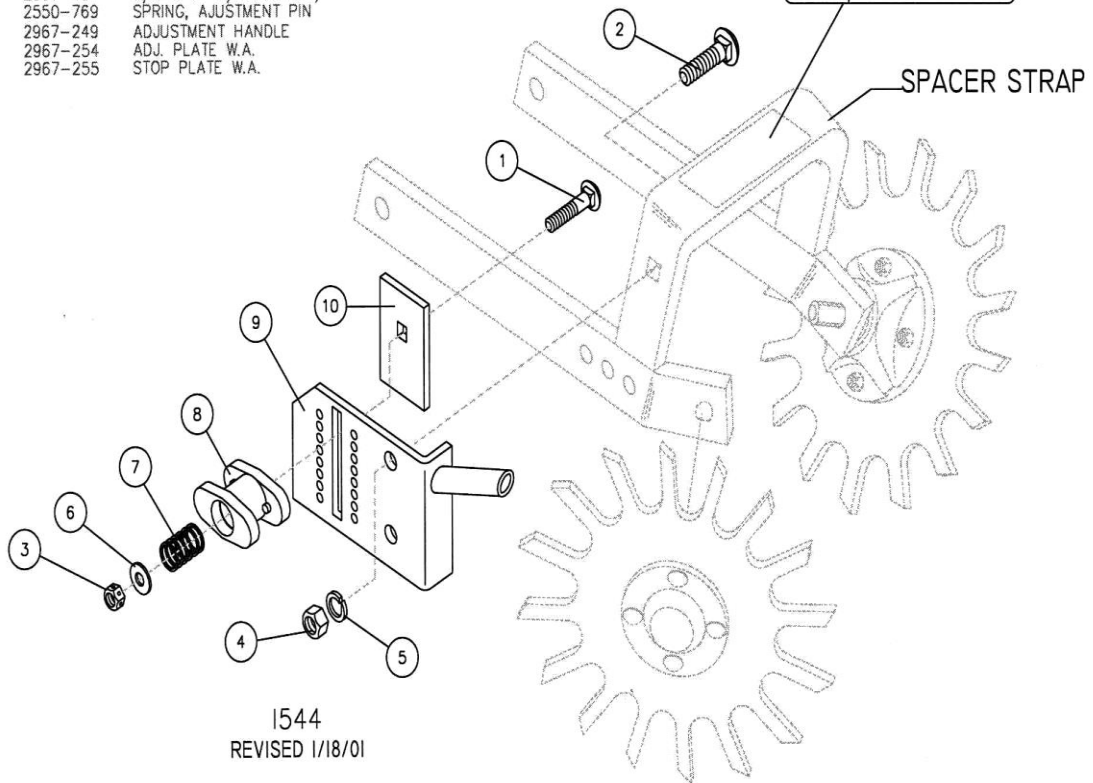


Yetter

...for land's sake

2967-070 QUICK ADJUST FOR 2967-115

KEY	QTY.	PART NO.	DESCRIPTION
1	1	2505-255	3/8-16 X 2 1/4 CAR BLT GR5 ZP
2	1	2505-339	1/2-13 X 1 1/2 CAR BLT GR5 ZP
3	1	2520-255	3/8-16 LOCK HEX NUT ZP
4	1	2520-352	1/2-13 HEX NUT ZP
5	1	2525-352	1/2 MED LOCKWASHER ZP
6	1	2967-454	3/8 ID X 15/16 OD X 1/4 MA. BU.
7	1	2550-769	SPRING, AJUSTMENT PIN
8	1	2967-249	ADJUSTMENT HANDLE
9	1	2967-254	ADJ. PLATE W.A.
10	1	2967-255	STOP PLATE W.A.



YETTER MANUFACTURING CO.
FOUNDED 1930

Colchester, IL 62326-0358
Toll free: 800/447-5777
309/776-3222 (Fax)

Website: www.yetterco.com
E-mail: info@yetterco.com

Yetter

INSTALLATION

1. To install the quick adjust assembly on the combo arm, you must first remove the ½" x 1 ½" carriage bolt (#2 2505-339) from the assembly.
2. Insert the ½ x 1 ½" carriage bolt through the square hole of the spacer strap located on the depth adjustment side of the combo arm.
3. Attach the quick adjust assembly to the ½" x 1 ½" carriage bolt using the lockwasher and hex nut provided.
4. Once installed the quick adjust will act as a down stop for the residue manager wheels.
5. Make certain to check that your planter is operating at the manufacturer's recommended frame height and is level.
6. Once a depth setting is chosen, check to see if residue manager wheels and the spacer strap have proper clearance during field operation. Failure to do so may result in equipment damage.



DANGER: DO NOT USE SPACER STRAP ON COMBO ARM W.A. AS A HANDLE, FINGERS MAY BE SERIOUSLY INJURED ON SHARP EDGE OF BLADE.