



TITAN™
2967-033/2967-038/2967-039

RESIDUE MANAGER
OPERATOR'S MANUAL
PART IDENTIFICATION
2565-736_REV_G 02/2019

YETTER MANUFACTURING CO.
FOUNDED 1930

Colchester, IL 62326-0358
Toll free: 800/447-5777
309/776-3222 (Fax)
Website: www.yetterco.com
E-mail: info@yetterco.com

YETTER

FOREWORD

You've just joined an exclusive but rapidly growing club.

For our part, we want to welcome you to the group and thank you for buying a Yetter product.

We hope your new Yetter products will help you achieve both goals-increase your productivity and increase your efficiency so that you may generate more profit.

This operator's manual has been designed into four major sections: Foreword, Safety Precautions, Installation Instructions and Parts Breakdown.



This **SAFETY ALERT SYMBOL** indicates important safety messages in the manual. When you see this symbol, be alert to the possibility of **PERSONAL INJURY** and carefully read the message that follows.

The word **NOTE** is used to convey information that is out of context with the manual text. It contains special information such as specifications, techniques and reference information of a supplementary nature.

The word **IMPORTANT** is used in the text when immediate damage will occur to the machine due

to improper technique or operation. Important will apply to the same information as specified by note only of an immediate and urgent nature.

It is the responsibility of the user to read the operator's manual and comply with the safe and correct operating procedure and to lubricate and maintain the product according to the maintenance schedule in the operator's manual.

The user is responsible for inspecting his machine and for having parts repaired or replaced when continued use of the product would cause damage or excessive wear to the other parts.

It is the user's responsibility to deliver his machine to the Yetter dealer who sold him the product for service or replacement of defective parts, which are covered by the warranty policy.

If you are unable to understand or follow the instructions provided in this publication, consult your local Yetter dealer or contact:

YETTER MANUFACTURING CO.

309/776-4111

800/447-5777

309/776-3222 (FAX)

Website: www.yetterco.com

E-mail: info@yetterco.com

WARRANTY

Yetter Manufacturing warrants all products manufactured and sold by it against defects in material. This warranty being expressly limited to replacement at the factory of such parts or products as shall appear to be defective after inspection. This warranty does not obligate the Company to bear cost of labor in replacement of parts. It is the policy of the Company to make improvements without incurring obligations to add them to any unit already sold. No warranty is made or authorized to be made, other than herein set forth. This warranty is in effect for one year after purchase.

DEALER: _____

Yetter Manufacturing warrants its own products only and cannot be responsible for damages to equipment on which mounted.

SAFETY

A brief description of signal words that may be used in this manual:

CAUTION: Used as a general reminder of good safety practices or to direct attention to unsafe practices.

WARNING: Denotes a specific potential hazard.

DANGER: Denotes the most serious specific potential hazard.

SAFETY PRECAUTIONS

You can make your farm a safer place to live and work if you observe the safety precautions given. Study these precautions carefully and insist that those working with you and for you follow them.

Finally, remember this: an accident is usually caused by someone's carelessness, neglect or oversight.



WARNING

Never clean, lubricate or adjust a machine that is in motion. Always lower or block the implement before performing service.

If the machine must be serviced in the raised position, jack or block it up to prevent it from accidentally falling and injuring someone.

Do not allow riders on the tractor or implement.

Use speeds and caution dictated by the terrain being traversed. Do not operate on any slope steep enough to cause tipping or loss of control.

Be sure all personnel are clear of the immediate area before operating.

Read and understand the operator's manual and require all other persons who will operate the equipment to do the same.

Be familiar with all tractor and implement controls and be prepared to stop engine and implements quickly in an emergency.



CAUTION

Consult your implement and tractor operator's manual for correct and safe operating practices.

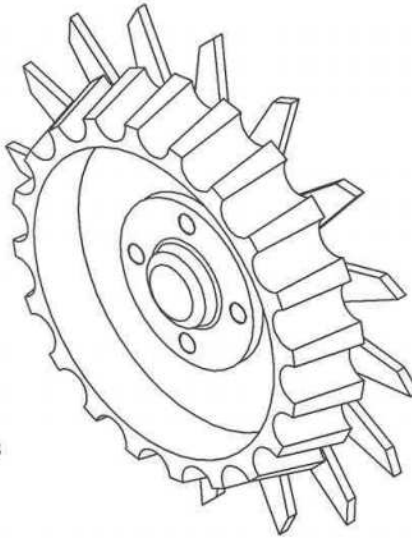
Beware of towed implement width and allow safe clearance.

FAILURE TO HEED MAY RESULT IN PERSONAL INJURY OR DEATH.

TABLE OF CONTENTS

Introduction.....	pg.2
Warranty.....	pg.2
Safety Information.....	pg.3
Table of Contents.....	pg.4
Optional Equipment.....	pg.4
Bolt Torque.....	pg.5
Installation Instruction.....	pg.6-7
Operation.....	pg.8-9
Maintenance.....	pg.9-15
Parts Identification.....	pg.16-23

OPTIONAL EQUIPMENT



S280-3

2967-186 FLOATER WHEEL
L.H. ASSEMBLY SHOWN
(2) REQUIRED PER ROW

BOLT TORQUE

Mounting bolts and hardware

Before operating the Titan™ Residue Manager for the first time, check to be sure that all hardware is tight. Check all hardware again after approximately 50 hours of operation and at the beginning of each planting season.

All hardware used on the Titan™ Residue Manager is Grade 5 unless otherwise noted. Grade 5 cap screws are marked with three radial lines on the head. If hardware must be replaced, be sure to replace it with hardware of equal size, strength and thread type. Refer to the torque values chart when tightening hardware.







Important: Over tightening hardware can cause as much damage as when under tightening. Tightening hardware beyond the recommended range can reduce its shock load capacity.

The chart below is a guide for proper torque. Use it unless a specified torque is called out elsewhere in the manual.

Torque is the force you apply to the wrench handle or the cheater bar, times the length of the handle or bar.

Use a torque wrench whenever possible.

The following table shows torque in ft. lbs. for coarse thread hardware.

BOLT DIA. AND THREADS PER INCH	 GRADE 2	 GRADE 5	OR  A-325	 GRADE 8
1/4	6		10	14
5/16	12		20	30
3/8 -16	25		35	50
7/16 - 14	35		55	80
1/2 - 13	55		85	125
9/16 - 12	75		125	175
5/8 - 11	105		170	235
3/4 - 10	185		305	425
7/8 - 9	170		445	690
1-8	260		670	1030
1 1/8 - 7	365		900	1460
1 1/4 - 7	515		1275	2060
1 3/8 -6	675		1675	2700
1 1/2 - 6	900		2150	3500
1 3/4 - 5	1410		3500	5600

Lubricate all bearings and moving parts as assembled and make certain that they work freely.

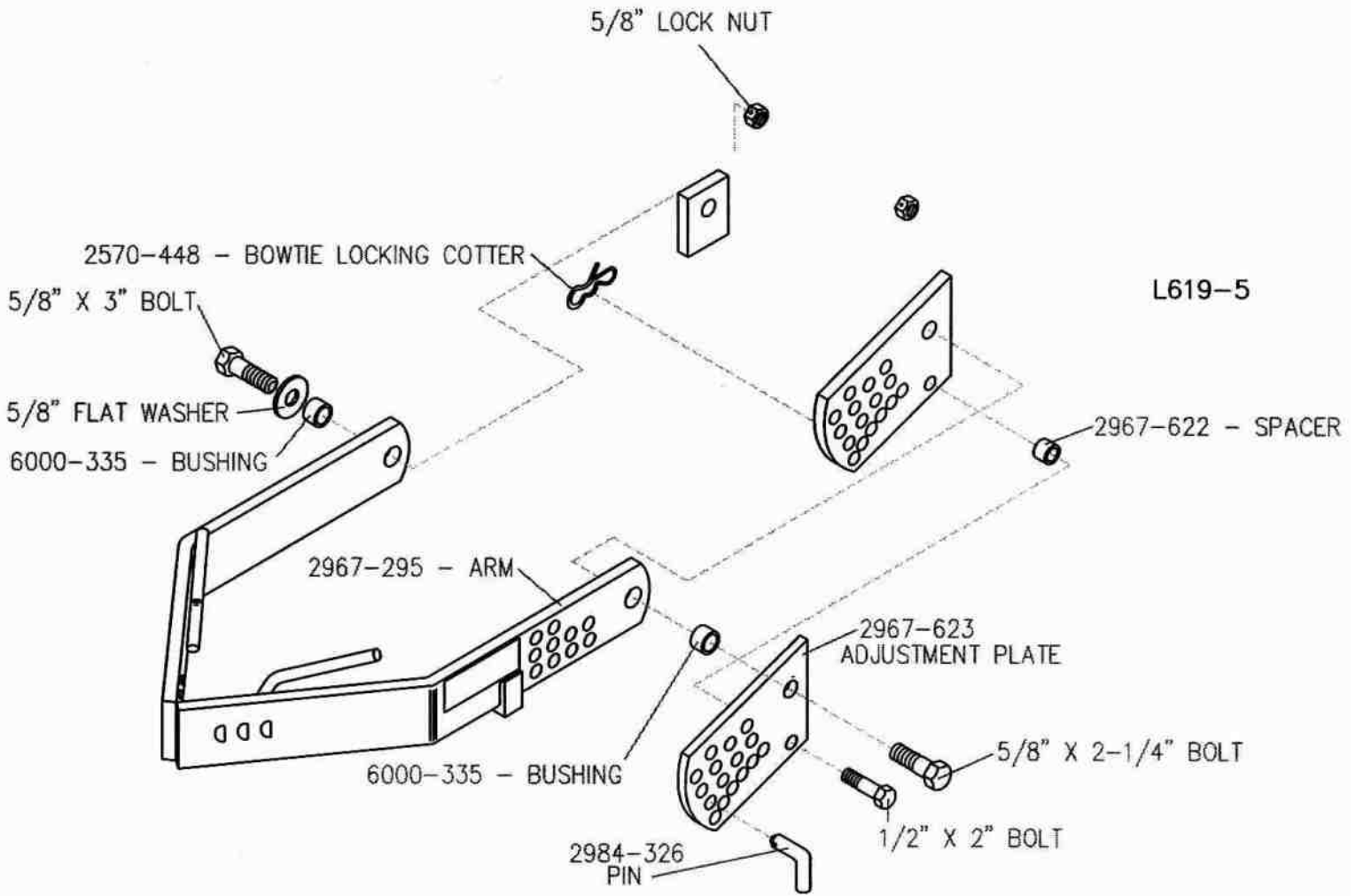


WARNING: Never work around the toolbar/implement while in a raised position without using safety lockups.



CAUTION: The Residue manager attachments are very heavy. Pay extra attention to lifting techniques while handling and or maneuvering the opener during assembly. Failure to do so may lead to personal injury.

INSTALLATION INSTRUCTIONS

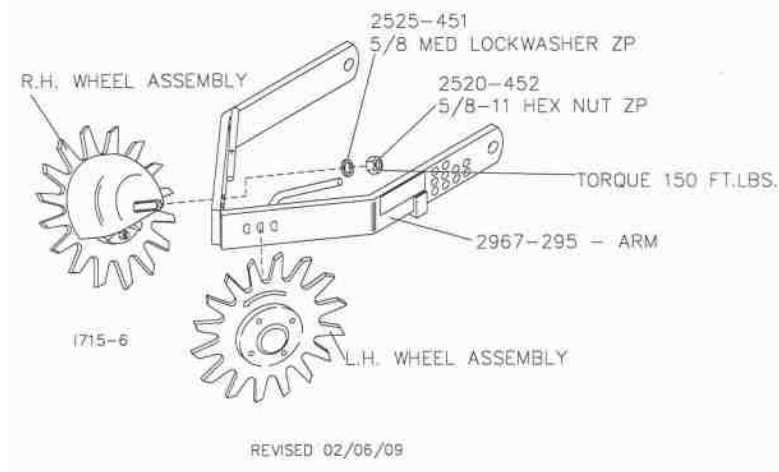


STEP 1. Attach the 2967-295 arm to the 2967-296-mount bracket using the 5/8" bolts, flat washers, bushings, 2967-623 adjustment plate and 5/8" lock nuts. Also, install the 1/2" x 2" bolt, 2967-622 spacer, 1/2" lock nut, 2984-326 pin and 2570-446 bowtie cotter on the 2967-623 adjustment plate.

INSTALLATION INSTRUCTIONS

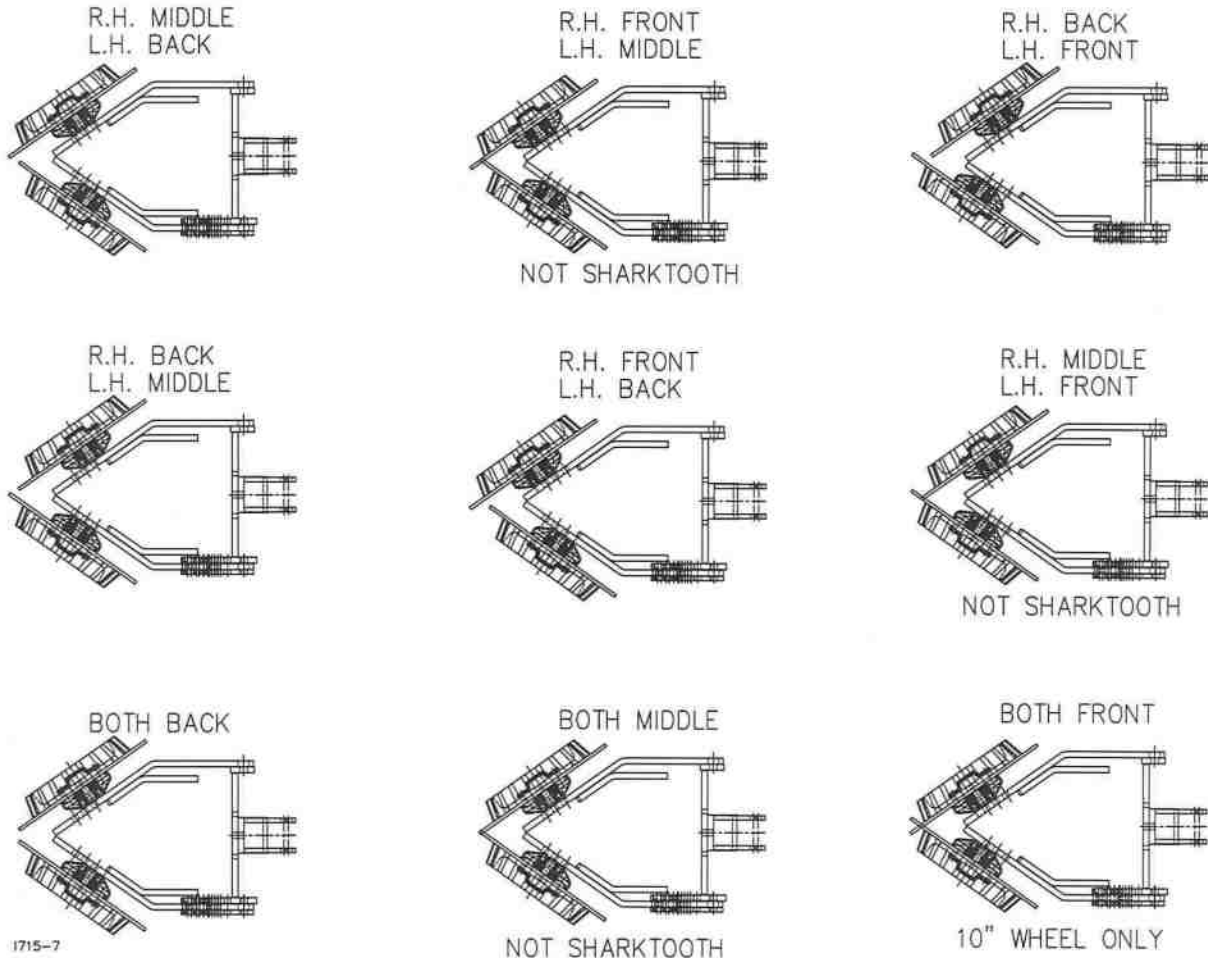
STEP 2 Choose the mounting hole in which to attach the R.M. wheels.

Attach the R.M. wheel/hub assemblies to the 2967-295 Combo Arm using 5/8" lock washers and hex nuts. Adjust the bearing shield to top dead center, rotate slightly forward. Torque to 150 ft./lbs.




MOUNTING CONFIGURATIONS FOR RESIDUE WHEELS

- 2967-404 – 13" TAPER TOOTH SPOKE WHEEL
- 2967-596 – 3/8" HEAVY DUTY SPOKE WHEEL
- 2967-602 – 13" SHARKTOOTH WHEEL
- 2967-388 – 10" TAPER TOOTH SPOKE WHEEL



OPERATION

 **CAUTION:** Where rocks are present the residue manager should be set in the “float” position, not locked down.

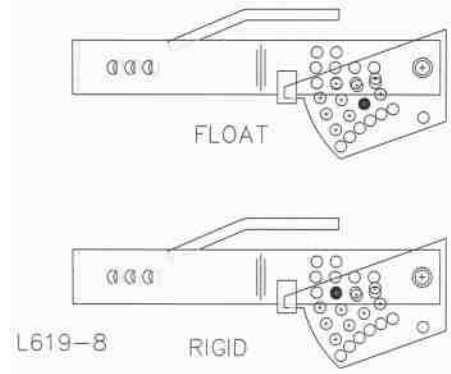
Adjust the residue manager to move crop residue aside and not move any soil. Adjustments to the residue manager may have to be made when changing field conditions and type and amount of residue. Use the handle for leverage when changing depth settings.

“FLOAT SETTINGS”

Install the adjustment pin below the combo arm.
To raise the wheels, lift the 2967-295 and move the adjustment pin up.
To lower the wheels, move the adjustment pin down.

“RIGID SETTING”

Install the adjustment pin through the combo arm.
To raise the wheels, lift the 2967-295-combo arm to the desired position and insert the pin.
To lower the wheels, lower the combo arm to the desired position and insert the pin.



ROW CLEANER DO'S AND DON'TS

1. **DO NOT** move soil; Residue Managers are designed to move crop residue only.
2. **DO NOT** operate at slow speeds, ground speed affects how aggressive the spoke wheels are; operate at sufficient speed (4-6 mph) to maintain good residue flow.
3. **DO NOT** expect 100% of crop residue to be cleared, it is not necessary and would necessitate engaging the soil. The width of path cleared depends on ground conditions, depth setting and ground speed.
4. **DO** expect to see wheels occasionally quit turning, indicates ideal (shallow) setting which is not moving soil.
5. **DO** adjust toolbar frame height and drawbar to “level” correctly. Very important to ensure residue manager will follow ground contours properly.

OPERATION

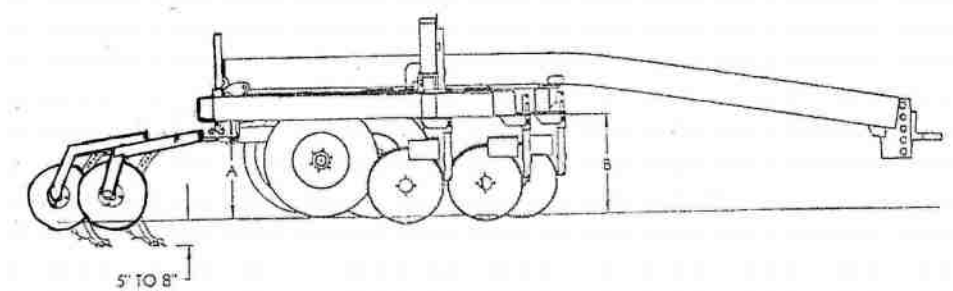


IMPORTANT: Please check the amount of travel that the Residue Manager has **before** going to the field.



IMPORTANT: Check for clearance with the residue manager wheels. If the residue manager wheels can make contact with the frame, tires, or hitch the Titan™ Residue Manager could be damaged.

Level applicator as shown below.



Once the knives are at the desired depth, the machine must be leveled. A low front end will cause the front knives to be in the ground deeper than the rear knives. With the knives in the soil, measure distance “A” and “B” from level ground to the bottom of the frame – THIS DISTANCE MUST BE THE SAME. Once the distance is obtained, step back approximately 50 feet and view the machine. The applicator should appear level to the ground. If not, make certain the ground is level. The applicator can be leveled by changing the position of the hitch clevis.

Set the coulters depth. The coulters are adjusted independent of the A. A. knives. Loosen the set screws on the mounting bracket and slide the coulters shaft up or down to the desired height.

Do not run the coulters any deeper than what is needed to cut the residue. Running the coulters deeper than necessary increases coulters wear. Coulters set too deep will decrease berm height by prefabricating the soil in front of the knife.

MAINTENANCE

STEP 1. Regularly inspect the residue manager for loose or worn parts. Repair and replace as needed.

STEP 2. Lubricate the residue manager wheel bearings using #2 multi-purpose polyurea grease every 50 hours.

MAINTENANCE

BEARING ASSEMBLY AND LUBRICATION

Practice Safety

Understand and practice safe service procedures before doing work. Follow ALL the operating, maintenance and safety information in the equipment operator manual. Clear the area of bystanders, especially small children, when performing any maintenance or adjustments. Keep work area clean and dry. Use adequate lighting for the job. Use only tools, jacks and hoists of sufficient capacity for the job.

Never lubricate, service, or adjust machine while it is moving. Keep hands, feet, and clothing from power-driven moving and rotating parts. Disengage all power and operate controls to relieve pressure. Lower equipment to the ground and stop the engine. Remove the key. Wait for all moving parts to stop before servicing, adjusting, repairing or unplugging.

Securely support any machine elements with blocks or safety stands that must be raised for service work.

Keep all parts in good condition and properly installed. Fix damaged equipment immediately. Replace worn or broken parts. Remove any buildup of grease, oil, or debris. Make sure all guards are in place and properly secured when maintenance work is completed.

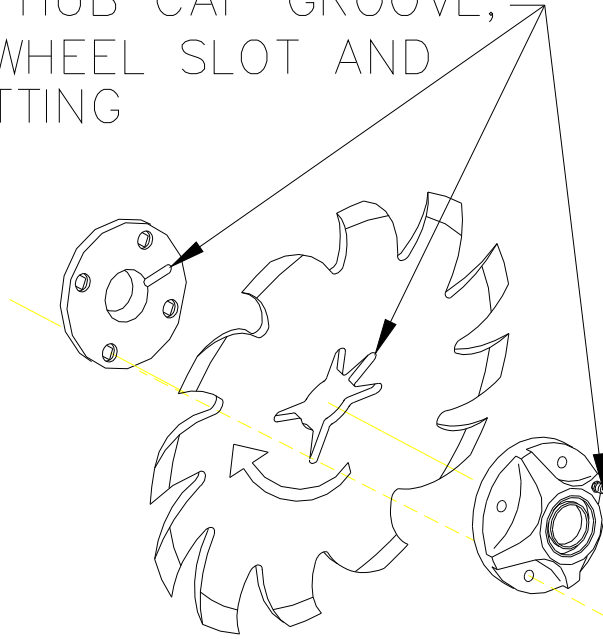
Assembly



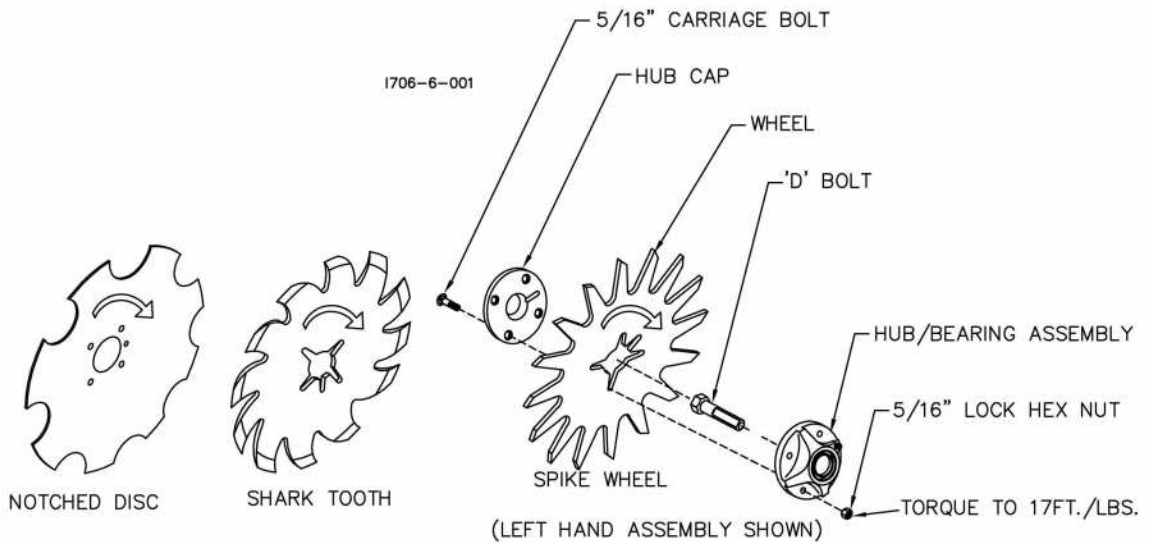
1190-1

MAINTENANCE

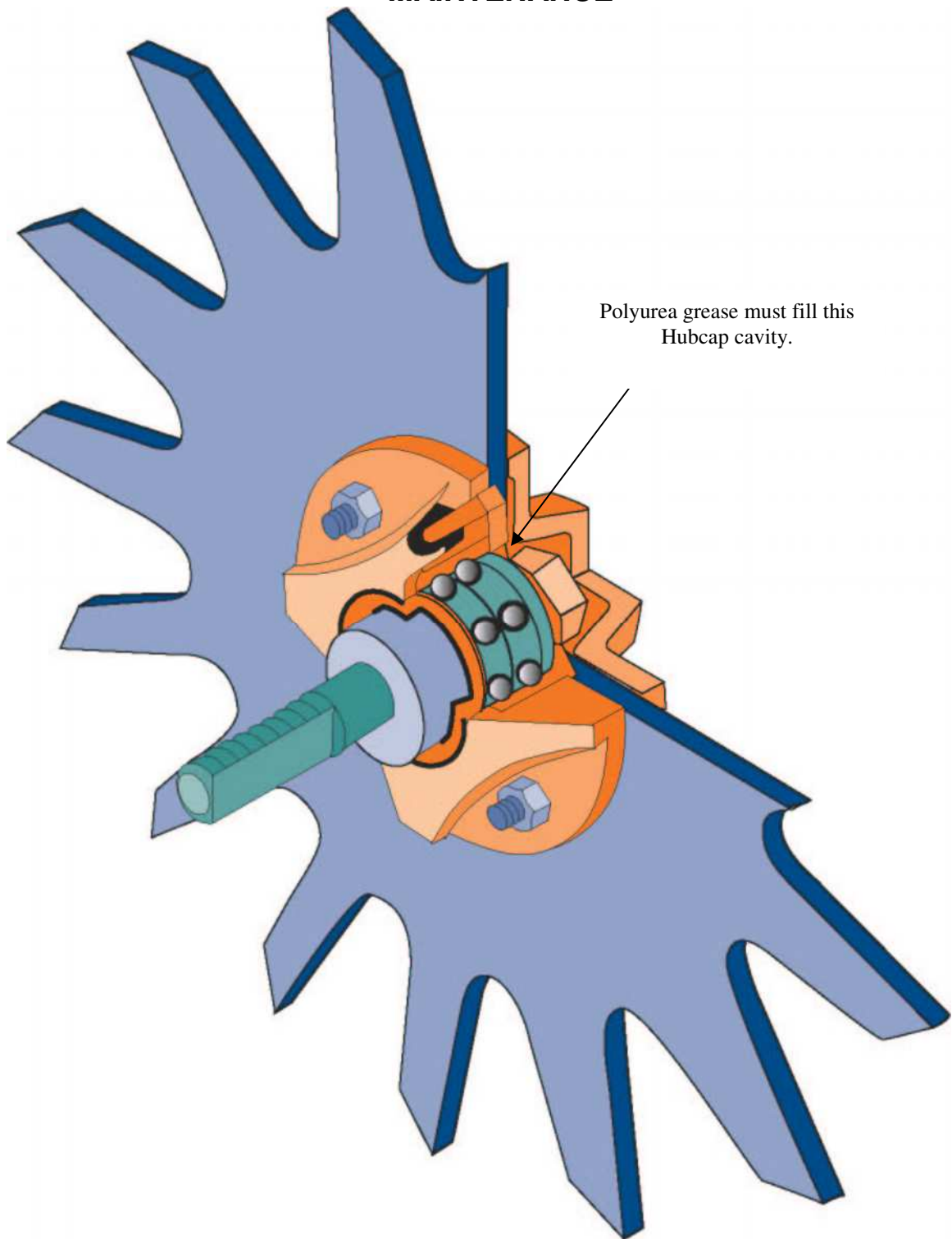
ALIGN THE HUB CAP GROOVE,
WITH THE WHEEL SLOT AND
GREASE FITTING



NOTE: Be certain to align the grease fitting with the slot in the wheel and the hubcap so that the grease can flow freely.



MAINTENANCE



MAINTENANCE

Lubrication



CAUTION: To help prevent serious injury or death to you or others caused by unexpected movement, service machine on a level surface. Lower machine to ground or sufficiently lock or block raised machine before servicing. If machine is connected to tractor, engage parking brake and place transmission in "PARK", shut off engine and remove key. If machine is detached from tractor, block wheels and use shop stands to prevent movement.



CAUTION: Do not clean, lubricate, or adjust machine while in motion.

Use grease based on NLGI consistency numbers and the expected air temperature range during the service interval.

Use a **multi-purpose polyurea, water resistant, moderate speed, and NLGI grade #2** grease.

Other greases may be used if they meet the following **NLGI Performance**

Classification: GC-LB

IMPORTANT: Some types of grease thickener are not compatible with others. Consult your grease supplier before mixing different types of grease.

Alternative Lubricants

Conditions in certain geographical areas may require special lubricants and lubrication practices which do not appear in the operator's manual. If there are any questions, consult Yetter Manufacturing Co. to obtain latest information and recommendation.

PART #	DESCRIPTION	OUNCES OF GREASE
2967-404	13" TAPER TOOTH R.M. WHEEL	1.12 OZ
2967-602	13" SHARK TOOTH R.M. WHEEL	1.12 OZ
2967-186	FLOATER WHEEL KIT W/R.M. WHEEL	2.08 OZ
2967-596	HEAVY DUTY OR BEVEL R.M. WHEEL W/ FLOATER WHEEL KIT	2.40 OZ

Storing Lubricants

Your machine can operate at top efficiency only if clean lubricants are used.

Use clean containers to handle all lubricants.

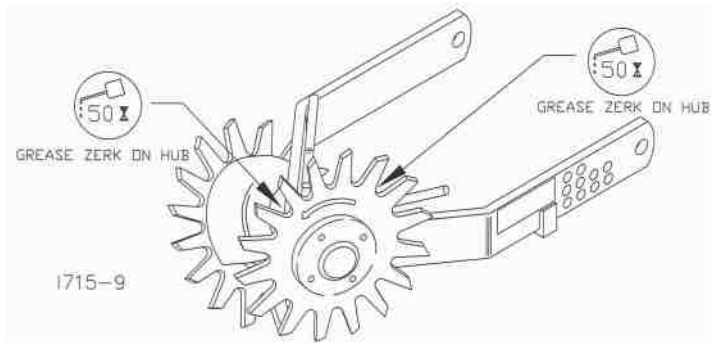
Store them in an area protected from dust, moisture and other contaminants.

MAINTENANCE

Lubrication Symbols

 Lubricate with grease at hourly interval indicated on symbol.

Lubrication Intervals



IMPORTANT: The recommended service intervals are based on normal conditions; severe or unusual conditions may require more frequent lubrication.

Perform each lubrication and service procedure at the beginning and end of each season. Clean grease fittings before using grease gun, to avoid injecting dirt and grit into the bearing. Replace any lost or broken fittings immediately. If a fitting fails to take grease, remove and clean thoroughly, replace fitting if necessary. Also check for failure of adjoining parts.

BEARING REPLACEMENT INSTALLATION

1. When assembling the spoke wheels, bearing assembly and hubcap, be sure to align the grease transfer hole in the spoke wheel with the groove in the hubcap and hole in the hub to allow grease passage.
2. Assemble the wheels, hubs and caps.
3. Grease the wheel/hub/bearing assembly.

MAINTENANCE

Storing the Equipment

Store the machine in an area away from human activity

Store machine in RAISED position.

Install service locks on all wheel cylinders.

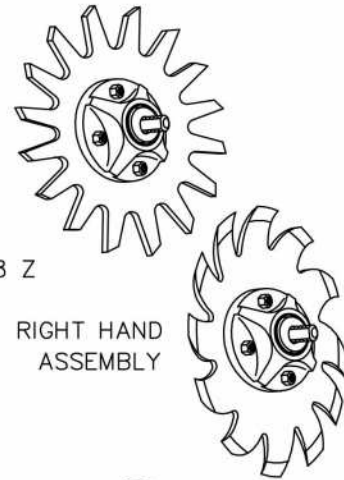
At the end of the season, the machine should be thoroughly inspected and prepared for storage. Repair or replace any worn or damaged components to prevent down time at the start of the next season. Store machine under cover with all parts in operating condition.

- Clean machine thoroughly to remove all dirt, debris and crop residue, which would hold moisture and cause rusting.
- Inspect machine for worn or broken parts. See your Yetter Farm Equipment dealer during the off-season so that parts or service can be acquired when machine is not needed in the field.
- Lubricate bearings as outlined in the Lubrication section
- Paint all parts which are chipped or worn and require repainting.
- Store machine in a clean, dry place with the planting unit out of the sun.
- If the machine cannot be stored inside, cover with a waterproof tarpaulin and tie securely in place.
- Do not allow children to play on or around the machine

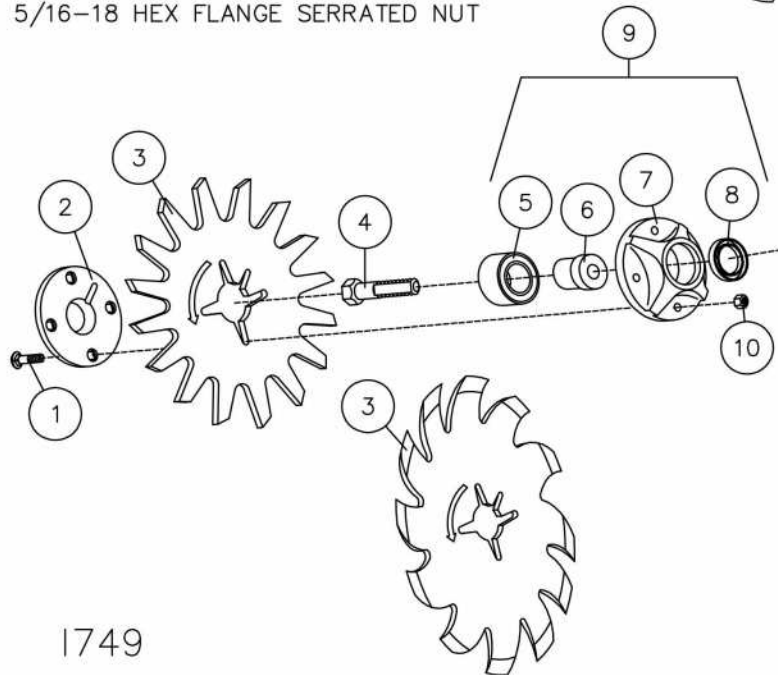
PARTS IDENTIFICATION

RESIDUE MANAGER WHEEL ASSEMBLY

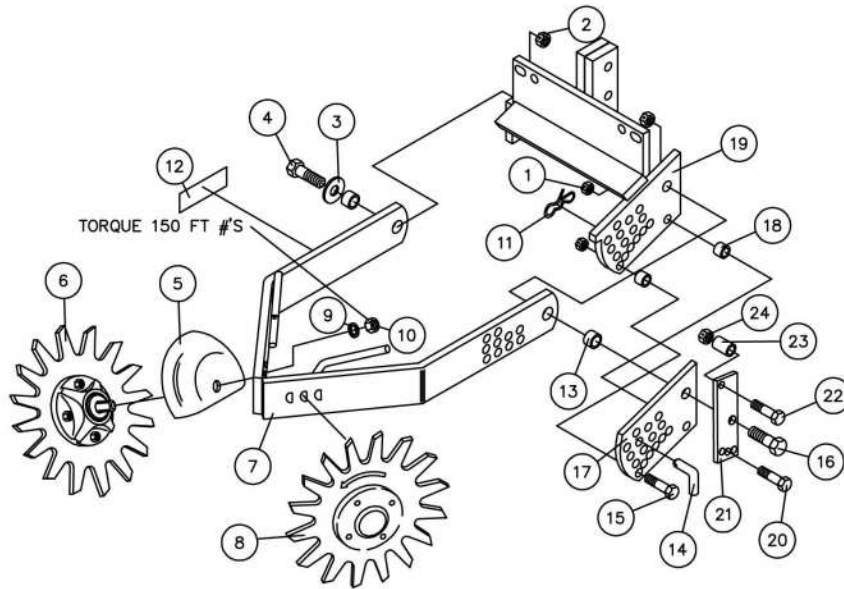
DET	QTY	PART NO.	DESCRIPTION
1	4	2505-207	5/16-18 X 1 1/4 CAR BLT GR5
2	1	2965-352	HUB CAP CASTING, 4 BOLT, BLACK
3	1	2967-404	13" TAPER TOOTH SPOKE WHEEL
	1	2967-602	13" SHARK TOOTH WHEEL
4	1	2570-740	D-BOLT, FLANGE 5/8-11 X 2.812 GR.8 Z
5	1	2570-594	BEARING, 2 ROW NTN# DF0654L
6	1	2570-715	BEARING INSERT, TRASHMASTER
7	1	2965-351	HUB CAST.,MACHINED, 4 BOLT
8	1	2550-069	SEAL, TRIPLE LIP, NTI# 1812-5
9	1	2965-128	HUB AND BEARING ASS'Y.,4 BOLT
10	4	2520-206	5/16-18 HEX FLANGE SERRATED NUT



REVISED 01/14/2019



PARTS IDENTIFICATION



1749

2967-033 – UNIVERSAL RM KIT (NH3)

DET	QTY	PART NO.	DESCRIPTION	DET	QTY	PART NO.	DESCRIPTION
1	2	2520-357	1/2-13 LOCK HEX NUT ZP	13	2	6000-335	9/16" BUSHING
2	2	2520-459	5/8-11 LOCK HEX NUT ZP	14	1	2984-326	R.M. UPSTOP PIN ZP
3	1	2526-453	5/8 SAE FLATWASHER ZP	15	1	2502-351	1/2-13 X 2 HHCS GR5
4	1	2502-391	5/8-11 X 2 HHCS GR 5 ZP	16	1	2502-332	5/8-11 X 2-1/4 HHCS GR 5 ZP
5	2	2967-392	SHIELD, RM COMBO-PAINTED	17	1	2967-623	ADJUSTING PLATE BACKER
6	1	2966-140	R.M. COMBO WHEEL ASSEMBLY R.H.	18	2	2967-622	9/16" SPACER ZYD
7	1	2966-265	UNIVERSAL COMBO ARM W.A.	19	1	2966-225	R.M. ADJ. BRACKET W/MOUNTING
8	1	2966-141	R.M. COMBO WHEEL ASSEMBLY L.H.	20	1	2502-296	1/2-13 X 2-1/2 HHCS GR 5 ZYD.
9	2	2525-451	5/8 MED LOCKWASHER ZP	21	1	2967-773	UPSTOP PLATE
10	2	2520-452	5/8-11 HEX NUT ZP	22	1	2502-317	1/2-13 X 1-3/4 HHCS GR 5 ZYD.
11	1	2570-448	.120 BOWTIE LOCKING COTTER ZYD	23	1	2960-372	SPRING STOP, ZYD.
12	2	2565-162	YETTER DECAL, 1-1/2 X 4-1/2	24	1	2520-364	1/2-13 HEX LOCKNUT, JAM ZYD

UPDATED 8/2015

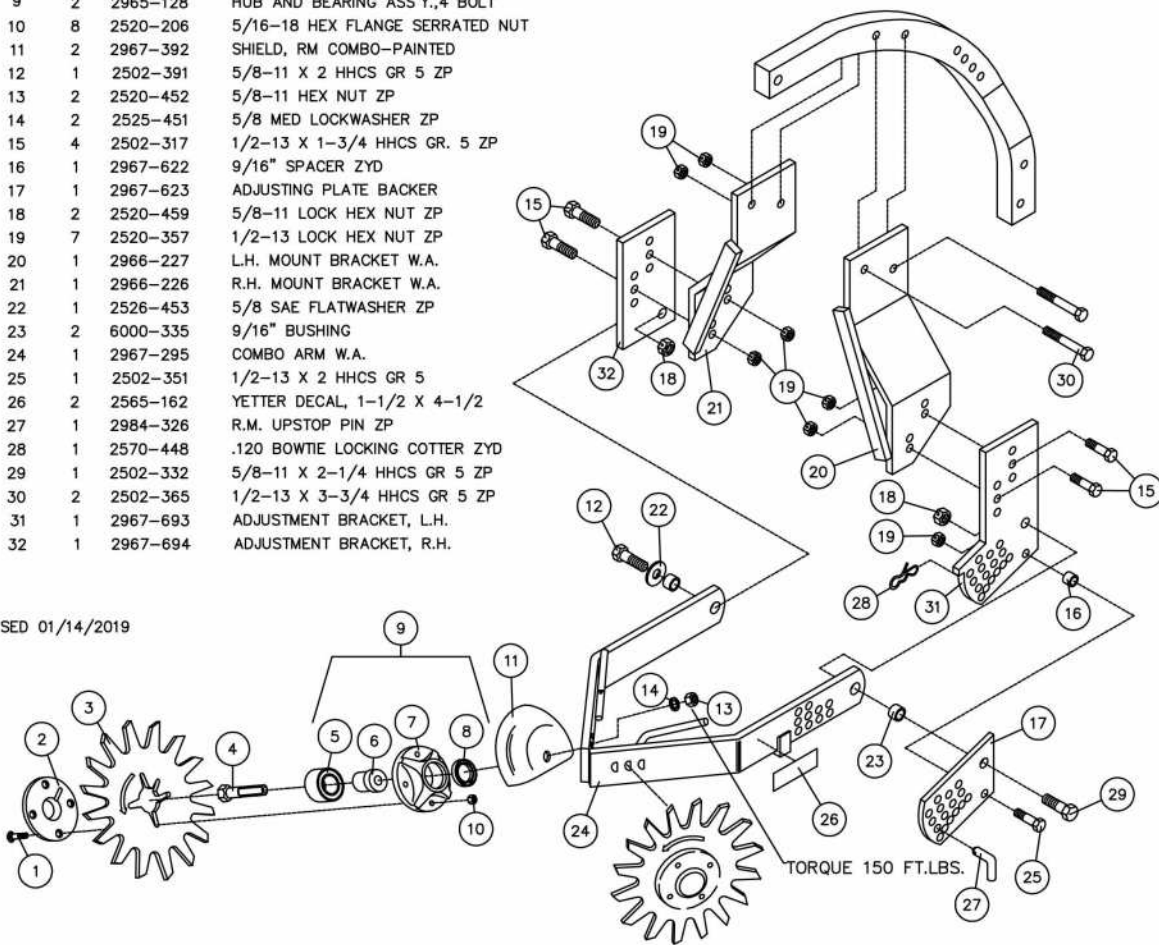
PARTS IDENTIFICATION

2967-038 -RESIDUE MANAGER FOR DMI HCS SHANK

DET	QTY	PART NO.	DESCRIPTION
1	8	2505-208	5/16-18 X 1 1/2 CAR BLT GR5
2	2	2965-352	HUB CAP CASTING, 4 BOLT, BLACK
3	2	2967-404	13" TAPER TOOTH SPOKE WHEEL
	2	2967-596	3/8" TAPER TOOTH SPOKE WHEEL
	2	2967-602	13" SHARK TOOTH WHEEL
4	2	2570-740	D-BOLT,FLANGE, 5/8-11 X 2.812 GR.8 Z
5	2	2570-594	BEARING, 2 ROW NTN# DF0654L
6	2	2570-715	BEARING INSERT, TRASHMASTER
7	2	2965-351	HUB CAST.,MACHINED, 4 BOLT
8	2	2550-069	SEAL, TRIPLE LIP, NTN# 1812-5
9	2	2965-128	HUB AND BEARING ASS'Y.,4 BOLT
10	8	2520-206	5/16-18 HEX FLANGE SERRATED NUT
11	2	2967-392	SHIELD, RM COMBO-PAINTED
12	1	2502-391	5/8-11 X 2 HHCS GR 5 ZP
13	2	2520-452	5/8-11 HEX NUT ZP
14	2	2525-451	5/8 MED LOCKWASHER ZP
15	4	2502-317	1/2-13 X 1-3/4 HHCS GR. 5 ZP
16	1	2967-622	9/16" SPACER ZYD
17	1	2967-623	ADJUSTING PLATE BACKER
18	2	2520-459	5/8-11 LOCK HEX NUT ZP
19	7	2520-357	1/2-13 LOCK HEX NUT ZP
20	1	2966-227	L.H. MOUNT BRACKET W.A.
21	1	2966-226	R.H. MOUNT BRACKET W.A.
22	1	2526-453	5/8 SAE FLATWASHER ZP
23	2	6000-335	9/16" BUSHING
24	1	2967-295	COMBO ARM W.A.
25	1	2502-351	1/2-13 X 2 HHCS GR 5
26	2	2565-162	YETTER DECAL, 1-1/2 X 4-1/2
27	1	2984-326	R.M. UPSTOP PIN ZP
28	1	2570-448	.120 BOWTIE LOCKING COTTER ZYD
29	1	2502-332	5/8-11 X 2-1/4 HHCS GR 5 ZP
30	2	2502-365	1/2-13 X 3-3/4 HHCS GR 5 ZP
31	1	2967-693	ADJUSTMENT BRACKET, L.H.
32	1	2967-694	ADJUSTMENT BRACKET, R.H.

I750

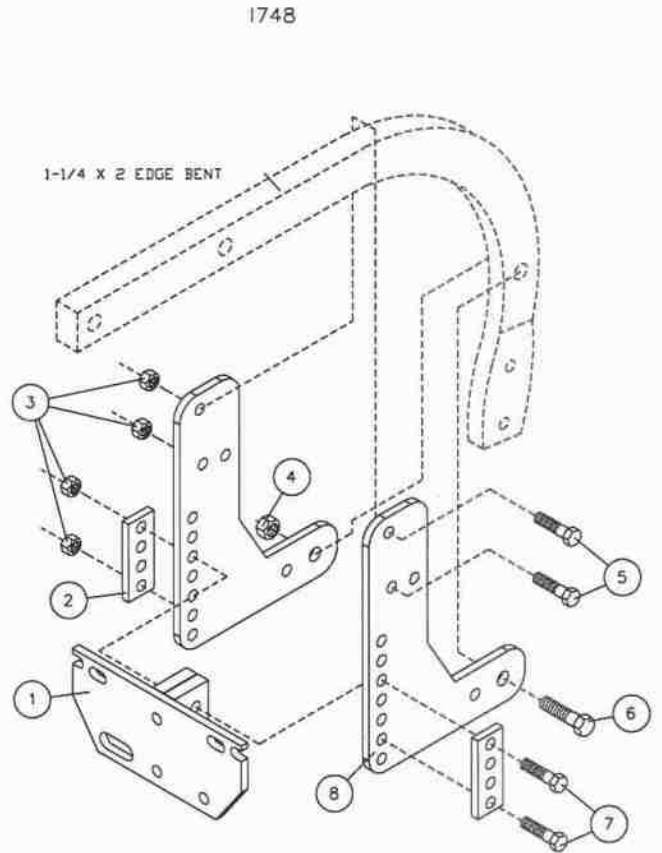
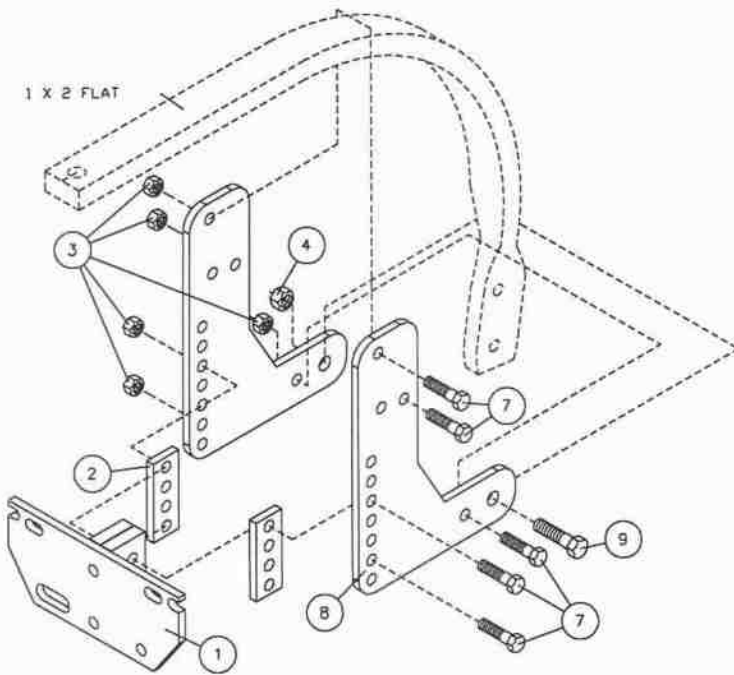
REVISED 01/14/2019



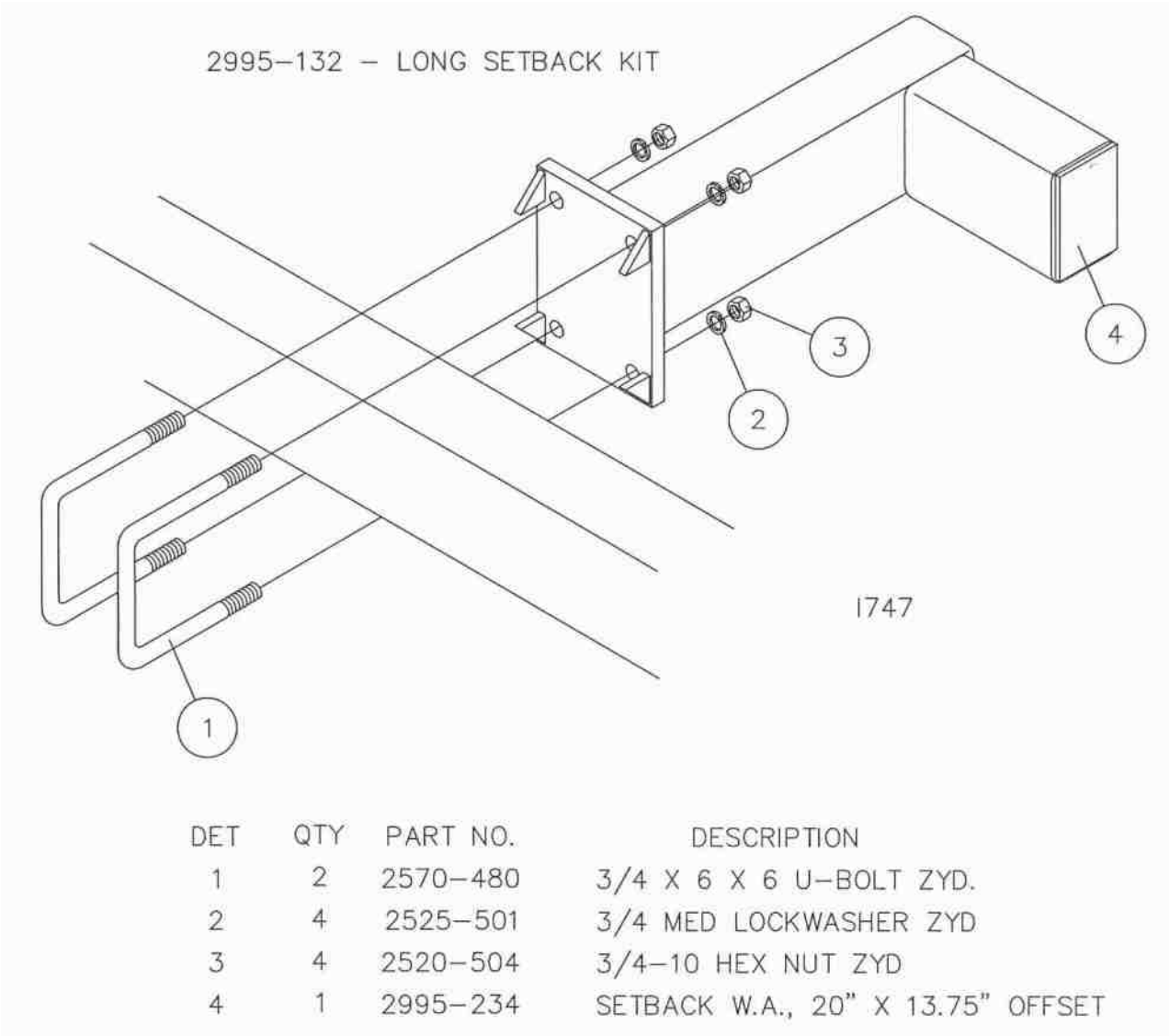
PARTS IDENTIFICATION

2967-032 - UNIVERSAL RM MOUNT (NH3)

DET	QTY	PART NO.	DESCRIPTION
1	1	2966-224	MOUNT PLATE, W.A.
2	2	2967-692	SHIM PLATE
3	5	2520-357	1/2-13 LOCK HEX NUT ZP
4	1	2520-459	5/8-11 LOCK HEX NUT ZP
5	2	2502-295	1/2-13 X 2-3/4 HHCS GR5 ZP
6	1	2502-325	5/8-11 X 3 HHCS GR5 ZP
7	5	2502-316	1/2-13 X 3-1/2 HHCS GR5 ZP
8	2	2967-690	SHANK MOUNT PLATE
9	1	2502-324	5/8-11 X 3-1/2 HHCS GR5 ZP

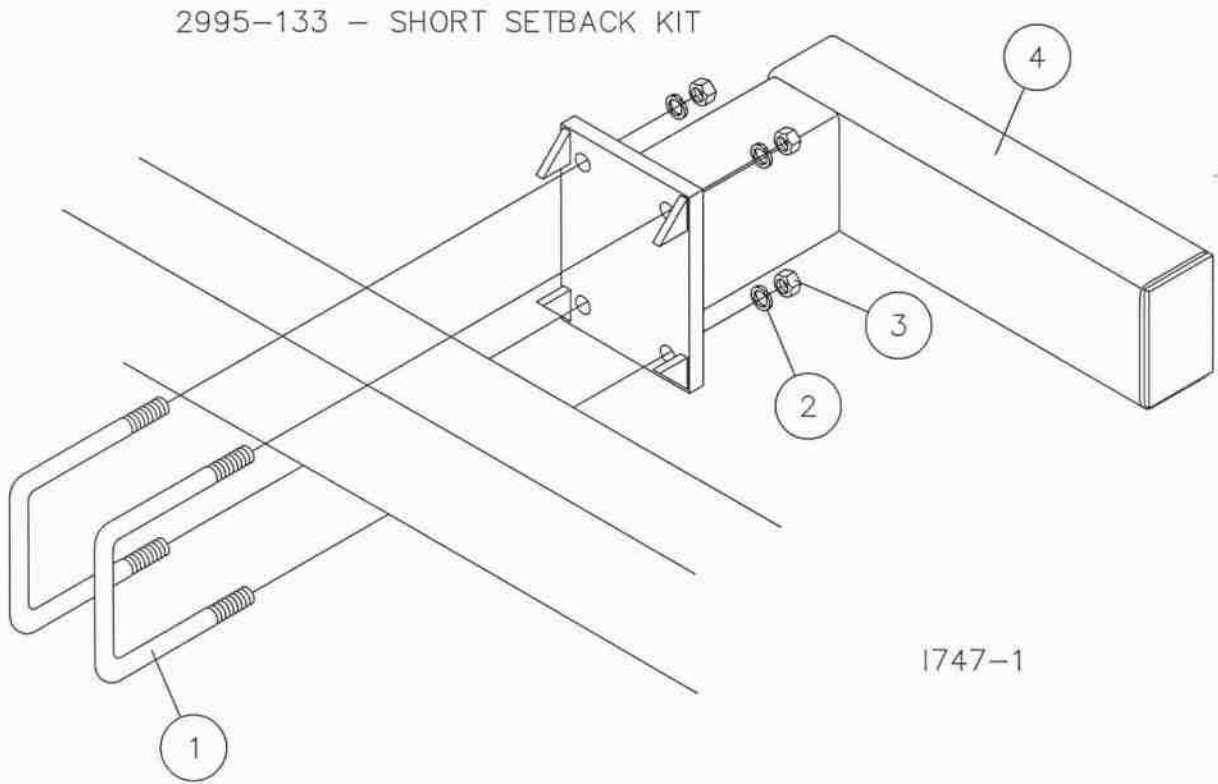


PARTS IDENTIFICATION



DET	QTY	PART NO.	DESCRIPTION
1	2	2570-480	3/4 X 6 X 6 U-BOLT ZYD.
2	4	2525-501	3/4 MED LOCKWASHER ZYD
3	4	2520-504	3/4-10 HEX NUT ZYD
4	1	2995-234	SETBACK W.A., 20" X 13.75" OFFSET

PARTS IDENTIFICATION



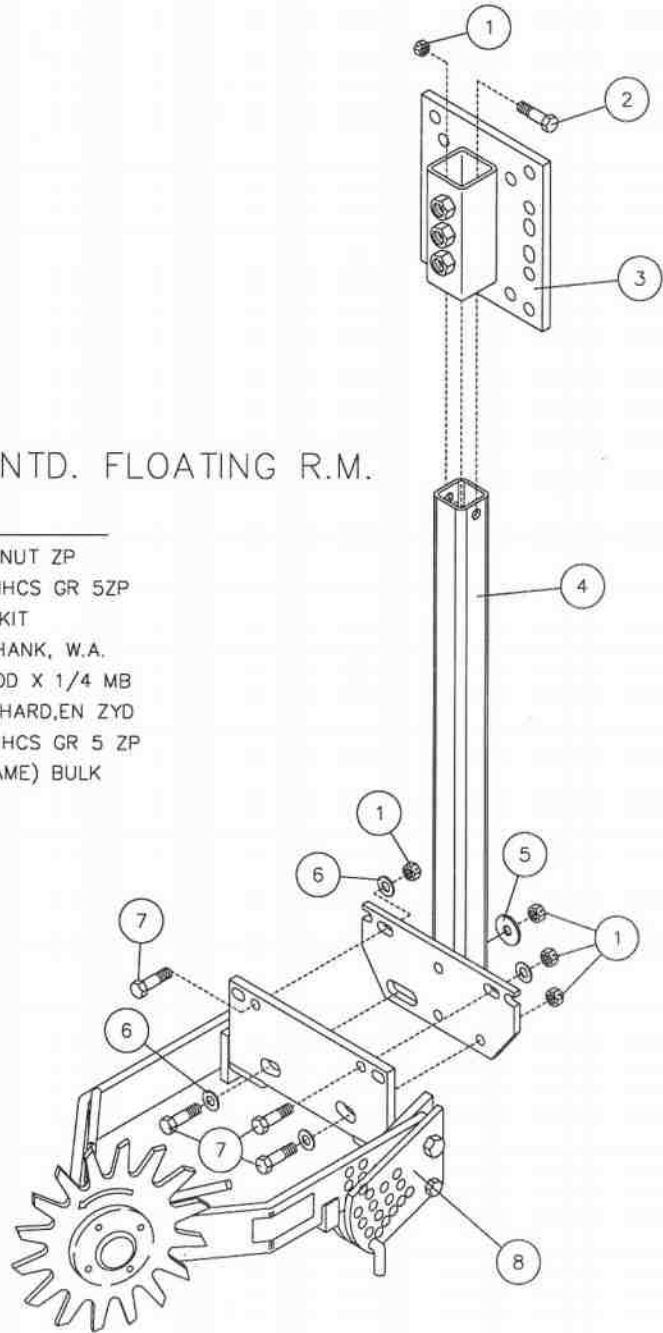
DET	QTY	PART NO.	DESCRIPTION
1	2	2570-480	3/4 X 6 X 6 U-BOLT ZYD.
2	4	2525-501	3/4 MED LOCKWASHER ZYD
3	4	2520-504	3/4-10 HEX NUT ZYD
4	1	2995-233	SETBACK W.A., 13.75" X 20" OFFSET

PARTS IDENTIFICATION

2967-039

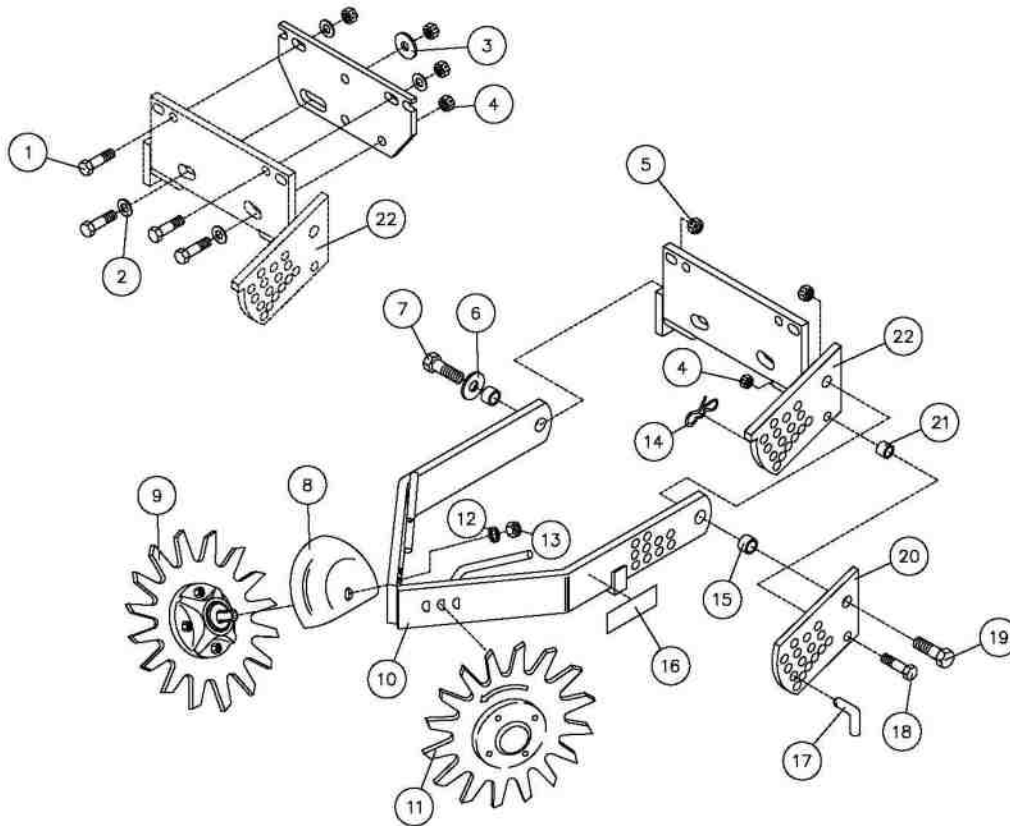
FRAME MNTD. FLOATING R.M.

DET.	QTY	PART NO.	DESCRIPTION
1	5	2520-357	1/2-13 LOCK HEX NUT ZP
2	1	2502-296	1/2-13 X 2-1/2 HHCS GR 5ZP
3	1	2967-077	UNIVERSAL MOUNT KIT
4	1	2966-245	MOUNTING BRKT, SHANK, W.A.
5	1	2526-402	9/16 ID X 1-3/4 OD X 1/4 MB
6	4	2526-355	1/2 FLAT WASHER HARD,EN ZYD
7	4	2502-317	1/2-13 X 1-3/4 HHCS GR 5 ZP
8	1	2967-041	UNIV. R.M. KIT (FRAME) BULK



1767

PARTS IDENTIFICATION



2967-041 UNIV. R.M. KIT (FRAME) BULK

DET	QTY	PART NO.	DESCRIPTION
1	4	2502-317	1/2-13 X 1-3/4 HHCS GR5 ZP
2	4	2526-355	1/2 FLAT WASHER HARD'EN ZYD
3	1	2526-402	9/16 ID X 1-3/4 OD X 1/4 MB
4	5	2520-357	1/2-13 LOCK HEX NUT ZP
5	2	2520-459	5/8-11 LOCK HEX NUT ZP
6	1	2526-453	5/8 SAE FLATWASHER ZP
7	1	2502-391	5/8-11 X 2 HHCS GR5 ZP
8	2	2967-392	SHIELD, RM COMBO-PAINTED
9	1	2966-141	SPOKE WHEEL ASSY, LH, 3" D-BOLT
10	1	2967-295	COMBO ARM W.A.
11	1	2966-140	SPOKE WHEEL ASSY, RH, 3"D-BOLT
12	2	2525-451	5/8 MED LOCKWASHER ZP
13	2	2520-452	5/8-11 HEX NUT ZP
14	1	2570-448	.120 BOWTIE LOCKING COTTER ZYD
15	2	6000-335	9/16" BUSHING
16	2	2565-162	YETTER DECAL, 1-1/2 X 4-1/2
17	1	2984-326	R.M. UPSTOP PIN ZP
18	1	2502-351	1/2-13 X 2 HHCS GR 5
19	1	2502-332	5/8-11 X 2-1/4 HHCS GR5 ZP
20	1	2967-623	ADJUSTING PLATE BACKER
21	1	2967-622	9/16" SPACER ZYD
22	1	2966-237	R.M. ADJ. BRACKET SUB-W.A.

I766

Our name Is getting known

Just a few years ago, Yetter products were sold primarily to the Midwest only. Then we embarked on a program of expansion and moved into the East, the South, the West and now north into Canada. We're even getting orders from as far away as Australia and Africa.

So, when you buy Yetter products . . .you're buying a name that's recognized. A name that's known and respected. A name that's become a part of American agriculture and has become synonymous with quality and satisfaction in the field of conservation tillage.

Thank you.

YETTER MANUFACTURING CO.

Colchester, IL 62326-0358 • 309/776-4111

Toll Free 800/447-5777

Fax 309/776-3222

Website: WWW.YETTERCO.COM

E-MAIL: INFO@YETTERCO.COM

2565-736_REV_G • 02/2019