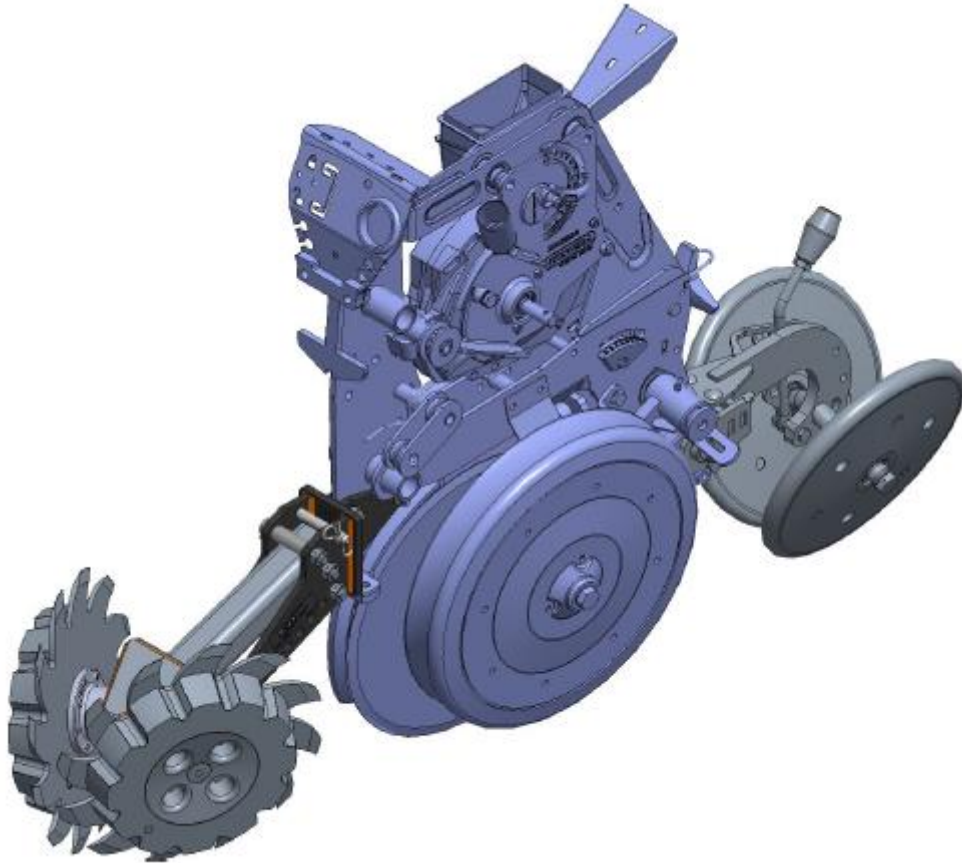




2967-005 RESIDUE MANAGER

MONOSEM PLANTER

2565-995 09/2025



YETTER MANUFACTURING CO.

Founded 1930

Colchester, IL 62326-0358

Toll free: 800-447-5777

Fax: 309-776-3222

Website: www.yetterco.com

Email: info@yetterco.com

YETTER

FOREWORD

You've just joined an exclusive but rapidly growing club.
For our part, we want to welcome you to the group and thank you for buying a Yetter product.

We hope your new Yetter products will help you achieve both goals-increase your productivity and increase your efficiency so that you may generate more profit.

This operator's manual has been designed into four major sections: Foreword, Safety Precautions, Installation Instructions and Parts Breakdown.

This **SAFETY ALERT SYMBOL** indicates important safety messages in the manual. When you see this symbol, be alert to the possibility of **PERSONAL INJURY** and carefully read the message that follows.



DANGER: Indicates an imminently hazardous situation which, if not avoided "will" result in death or serious injury. This signal word is to be limited to the most extreme situations



WARNING: Indicates a potentially hazardous situation which, if not avoided, "could" result in death or serious injury.



CAUTION: Indicates a potentially hazardous situation, which if not avoided, "may" result in minor or moderate injury. It may also be used to alert against unsafe practices.



NOTICE: Indicates information considered important, but not hazard related (e.g., messages relating to property damage).

It is the responsibility of the user to read the operator's manual and comply with the safe and correct operating procedure and to lubricate and maintain the product according to the maintenance schedule in the operator's manual.

The user is responsible for inspecting his machine and for having parts repaired or replaced when continued use of the product would cause damage or excessive wear to the other parts.

It is the user's responsibility to deliver his machine to the Yetter dealer who sold him the product for service or replacement of defective parts, which are covered by the warranty policy.

If you are unable to understand or follow the instructions provided in this publication, consult your local Yetter dealer or contact:

YETTER MANUFACTURING CO.

309/776-4111

800/447-5777

309/776-3222 (FAX)

Website: www.yetterco.com

E-mail: info@yetterco.com

WARRANTY

Yetter Manufacturing warrants all products manufactured and sold by it against defects in material. This warranty being expressly limited to replacement at the factory of such parts or products as shall appear to be defective after inspection. This warranty does not obligate the Company to bear cost of labor in replacement of parts. It is the policy of the Company to make improvements without incurring obligations to add them to any unit already sold. No warranty is made or authorized to be made, other than herein set forth. This warranty is in effect for one year after purchase.

DEALER: _____

Yetter Manufacturing warrants its own products only and cannot be responsible for damages to equipment on which mounted.



SAFETY PRECAUTIONS



A brief description of signal words that may be used in this manual:

DANGER: Indicates an imminently hazardous situation which, if not avoided “will” result in death or serious injury. This signal word is to be limited to the most extreme situations.

WARNING: Indicates a potentially hazardous situation which, if not avoided, “could” result in death or serious injury.

CAUTION: Indicates a potentially hazardous situation, which if not avoided, “may” result in minor or moderate injury. It may also be used to alert against unsafe practices.

NOTICE: Indicates information considered important, but not hazard related (e.g., messages relating to property damage).

Consult your implement and tractor operator’s manual for correct and safe operating practices. Be aware of towed implement width and allow safe clearance.

Safety decals are placed on the implement to alert the operator and others to the risk of personal injury or unsafe operation during normal operations and servicing.

1. The safety decals must be kept clean and in good condition to ensure that they are legible.
2. Safety decals must be replaced if they are missing or illegible.
3. When components are replaced during repair or servicing, check that the new components include the necessary safety signs.
4. Replacement safety decals may be obtained from your local dealer.



WARNING

Read these instructions carefully to acquaint yourself with the Equipment. Working with unfamiliar equipment can lead to accidents.

Never park the equipment on a steep incline or leave the equipment running unattended.

Never clean, lubricate or adjust a machine that is in motion.

Always check that straps are secure.

Make sure latches are in pinned position when moving equipment.

Do not allow children to operate this equipment.

Do not allow riders on the equipment, trailer and/or pick-up.

Use speed and caution dictated by the terrain being traversed. Do not operate on any slope steep enough to cause tipping or loss of control.

Read and understand the operator’s manual and require all other persons who will operate the equipment to do the same.

If operating on public roadways, where legal, be certain all lighting is operating properly and observe all traffic laws.

Beware of increased stopping distances and control effort when operating with implements attached.

Be familiar with all controls and be prepared to stop equipment quickly in an emergency.

FAILURE TO HEED MAY RESULT IN PERSONAL INJURY OR DEATH.

TABLE OF CONTENTS

Foreword	2
Safety.....	2-4
Torque	5
Assembly Instructions	6-8
Part Identification	9-13



CAUTION: The Residue Managers are very heavy. Pay extra attention to lifting techniques when handling or maneuvering the coulter during assembly. Failure to do so may lead to personal injury.

BOLT TORQUE

Before operating the RESIDUE MANAGER, check to be sure that all hardware is tight. Check all hardware again after approximately 50 hours of operation and at the beginning of each planting season.

All hardware is Grade 5 unless otherwise specified. Grade 5 cap screws are marked with three radial lines on the head. If hardware must be replaced, be sure to replace it with hardware of equal size, strength and thread type. Refer to the torque table below when tightening hardware.



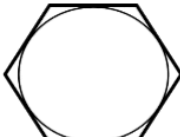



NOTICE: Over tightening hardware can cause as much damage as when under tightening. Tightening hardware beyond the recommended range can reduce its shock load capacity.

The chart below is a guide for proper torque. Use it unless a specified torque is called out elsewhere in the manual.

Torque is the force you apply to the wrench handle or the cheater bar, times the length of the handle or bar.

Use a torque wrench whenever possible.

The following table shows torque in ft. lbs. for coarse thread hardware.

Bolt Diameter and Threads per Inch	 Grade 2	 Grade 5	 A-325	 Grade 8
1/4	6	10		14
5/16	12	20		30
3/8 – 16	25	35		50
7/16 – 14	35	55		80
1/2 – 13	55	85		125
9/16 – 12	75	125		175
5/8 – 11	105	170		235
3/4-10	185	305		425
7/8 – 9	170	445		690
1-8	260	670		1030
1 1/8 – 7	365	900		1460
1 1/4 - 7	515	1275		2060
1 3/8 – 6	675	1675		2700
1 1/2 - 6	900	2150		3500
1 3/4 – 5	1410	3500		5600

ASSEMBLY INSTRUCTIONS

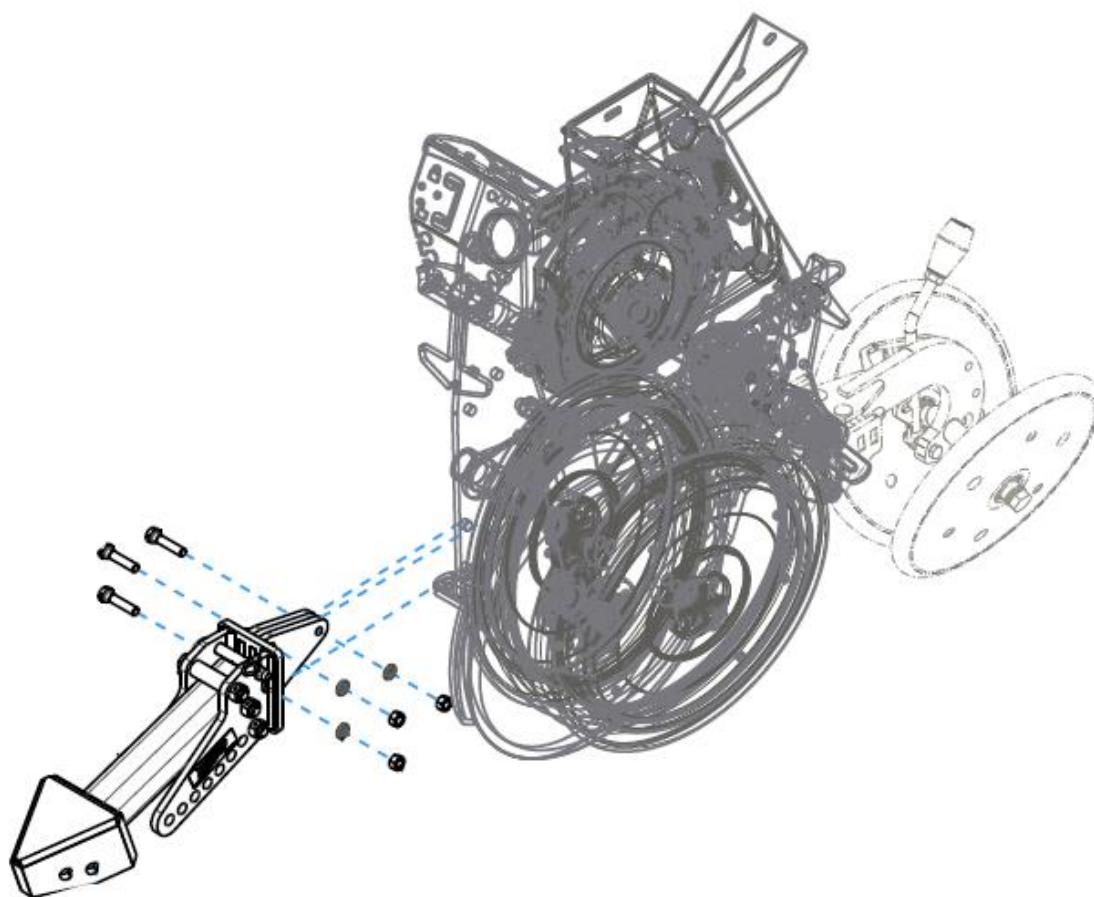


WARNING: Never work under the toolbar while in a raised position without using safety lockups.



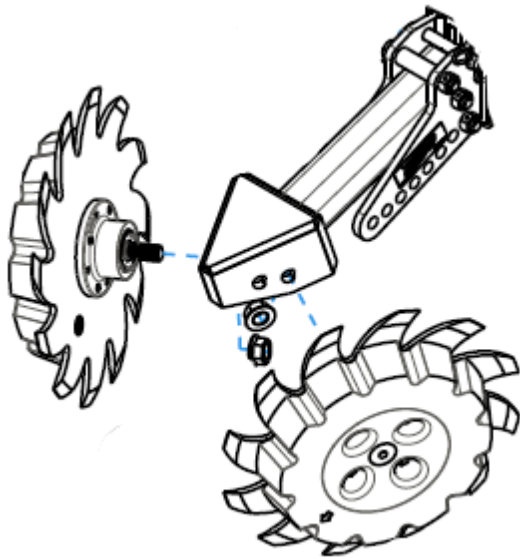
CAUTION: The Residue Managers are very heavy. Extra attention to lifting techniques while handling and or maneuvering the coulter during assembly is very important. **Failure to do so may lead to personal injury or death.**

STEP 1: Attach the 2966-919 sub-assembly to the Monosem row unit using the M10 hex head bolts, lock washers and hex nuts.

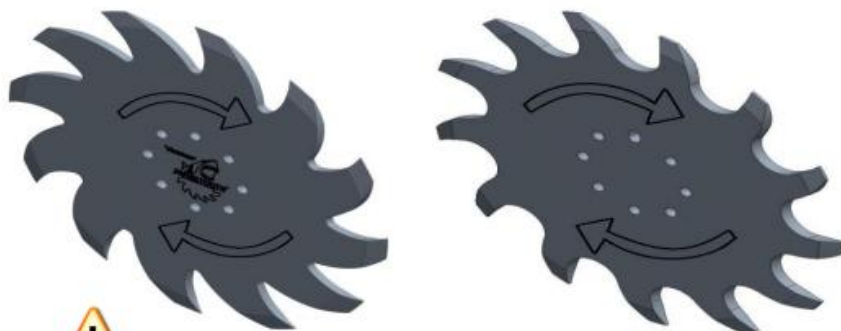


ASSEMBLY INSTRUCTIONS

STEP 2: Mount the RM wheels on the wheel mount using 2) 5/8 flange hex nut. Mount the wheels so the left side of the planter has the left wheel leading, right wheel trailing. Mount the wheels so that right side of the planter has the right wheel leading, left wheel trailing. Right & left is determined by standing behind the planter looking at the tractor or sitting in the tractor facing forward. Diagram below is proper installation for the right side of the planter. Note: Properly install row cleaner wheels so that wheel teeth curve back when entering field debris.

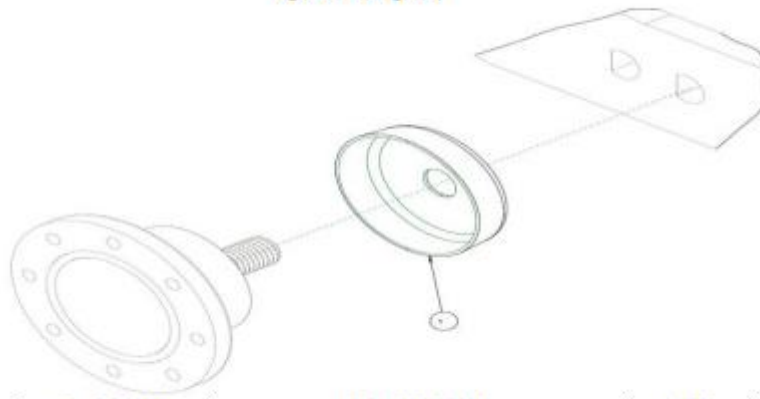


Torque to 190ft/lbs

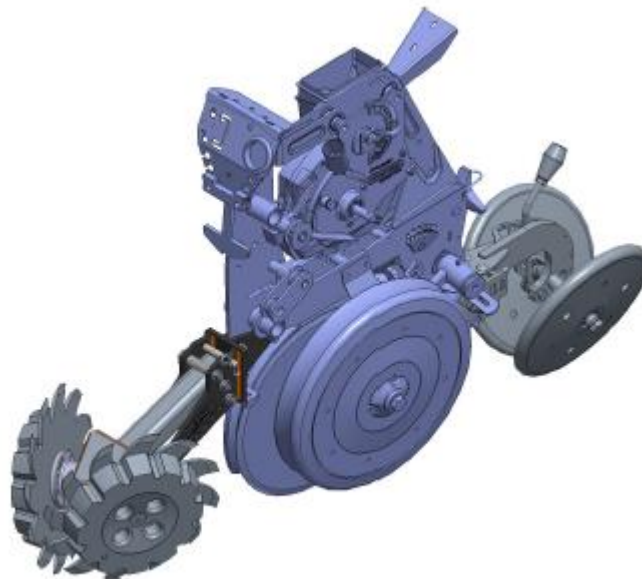


CAUTION: It is highly recommended to wear gloves when tightening wheels!

OPTION

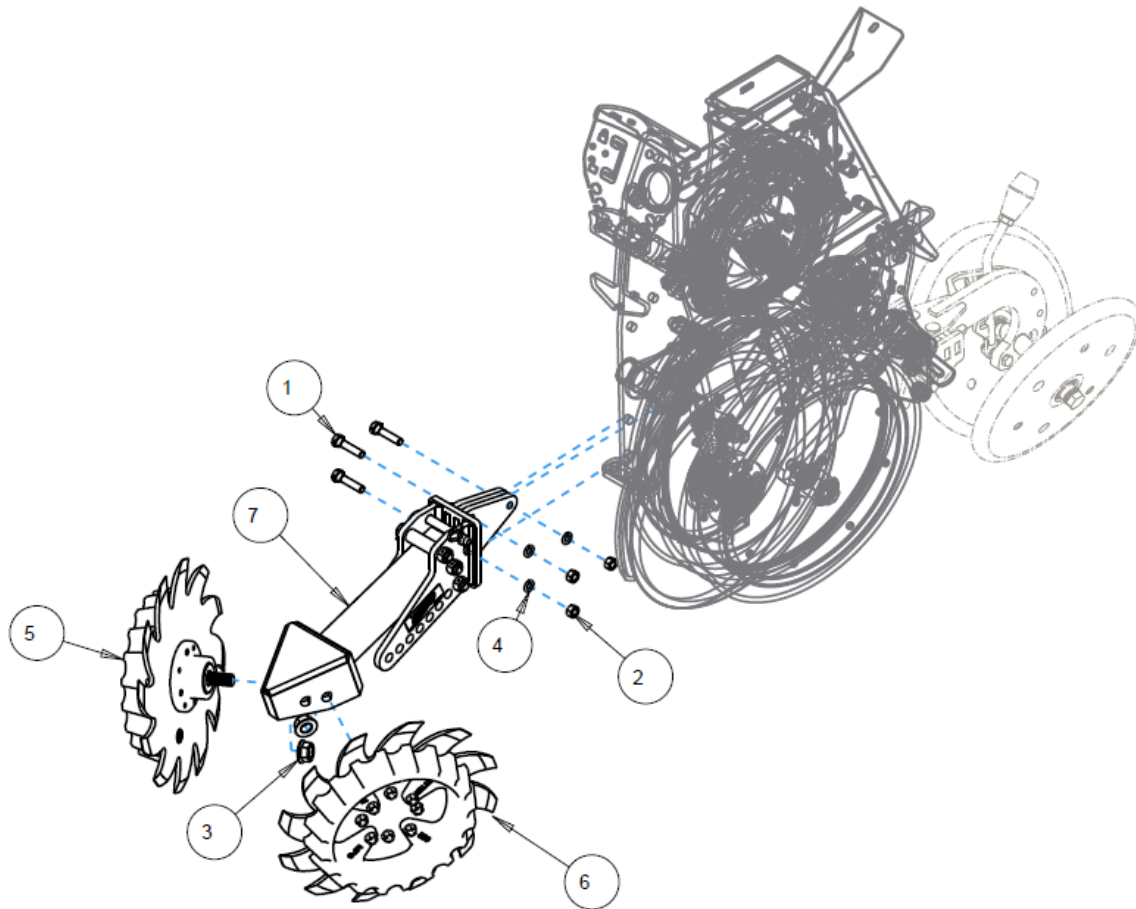


ITEM	PART NO.	DESCRIPTION	QTY.
1	2965-550	BEARING SHIELD	1



PART IDENTIFICATION

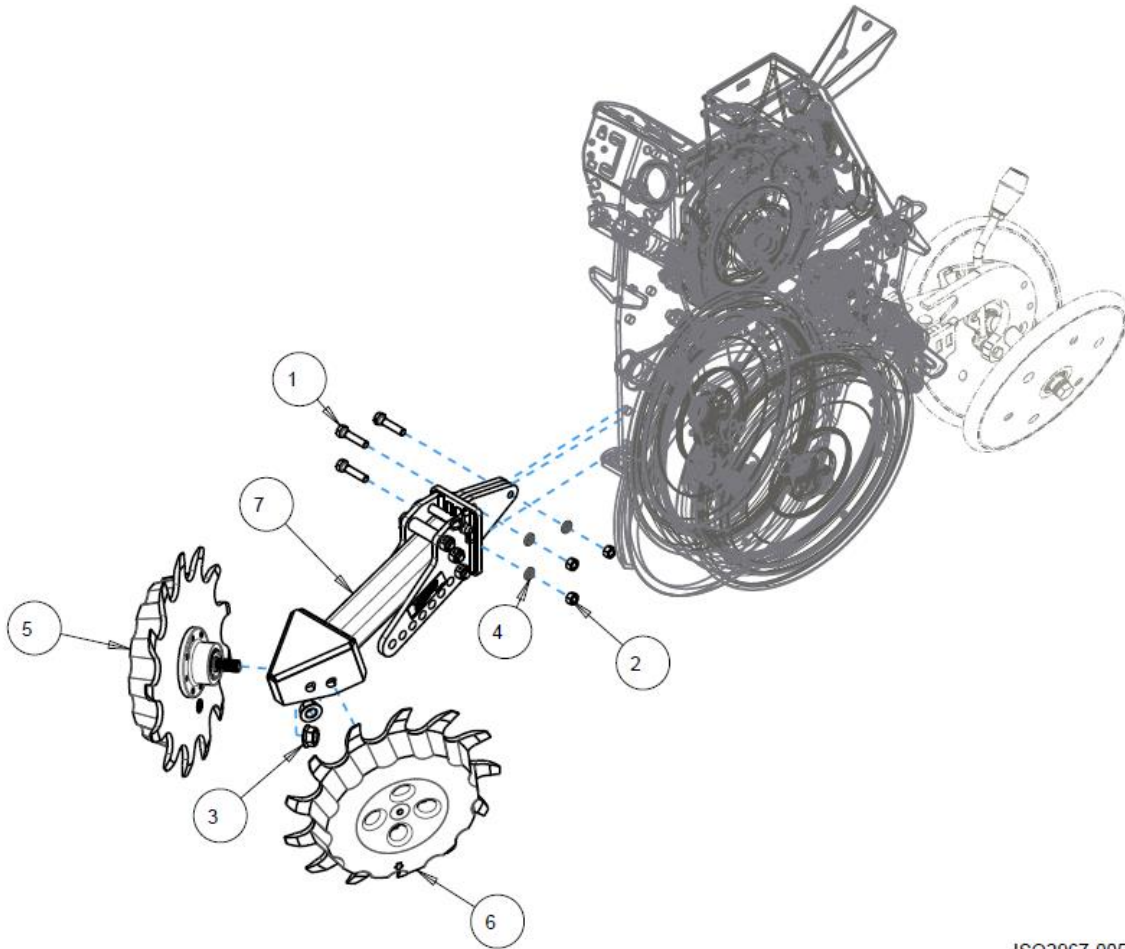
2967-005-ST-FW



ISO2967-005-ST-FW

ITEM	PART NO.	DESCRIPTION	QTY
1	2502-253	M10X1.5X45 8.8 HHCS ZP	3
2	2520-254	M10 X 1.5 HEX NUT, CLASS 8, ZP	3
3	2520-465	5/8-11 SER. FLANGE NUT, GR 8, ZP	2
4	2525-253	M10 MED. LOCKWASHER ZP	3
5	2966-140-ST-FW	SHRKTH ASSY,RH,3"D-BOLT FLT WL	1
6	2966-141-ST-FW	SHRKTH ASSY,LH,3"D-BOLT FLT WL	1
7	2966-919	MONOSEM DUAL WL R.M. SUBASSEMBLY	1

PART IDENTIFICATION

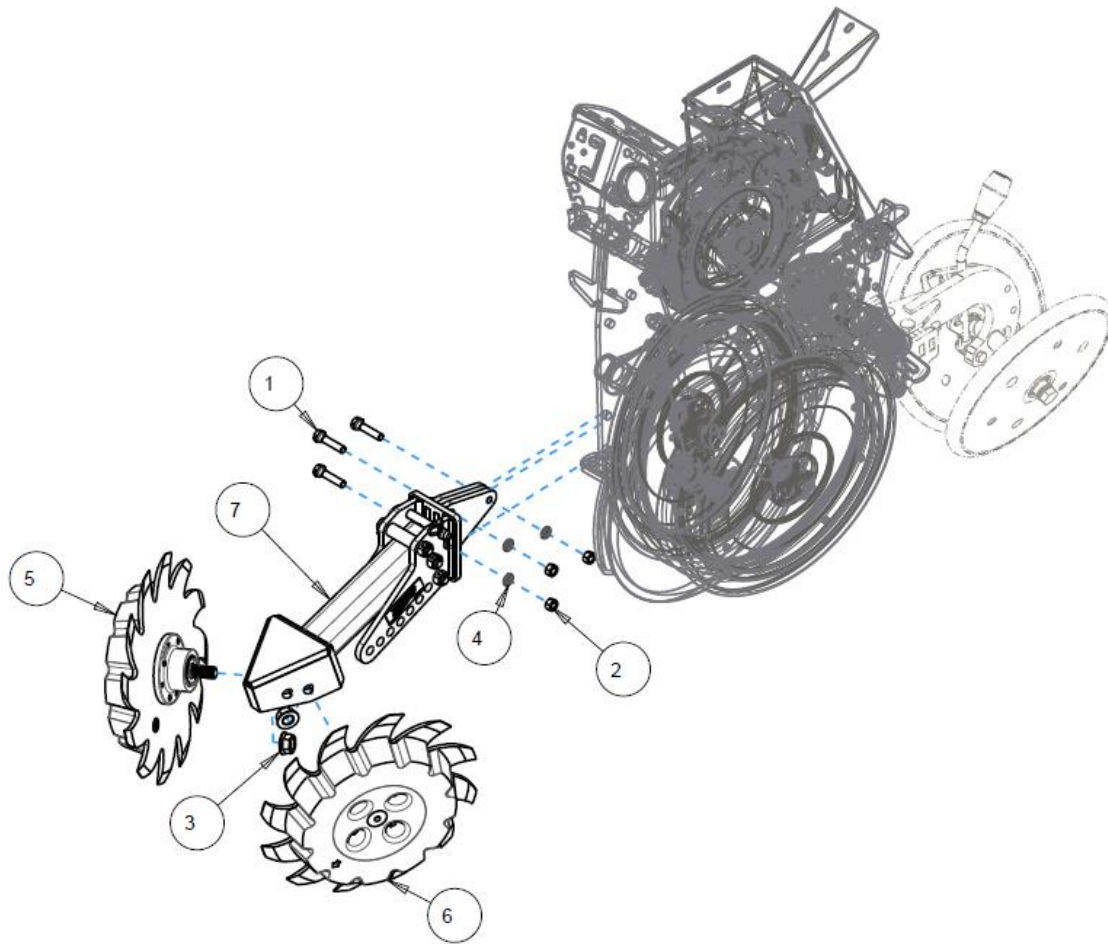


ISO2967-005-STF-PFW

ITEM	PART NO.	DESCRIPTION	QTY
1	2502-253	M10 X 1.5 X 45 CAP SCREW GRADE 8.8	3
2	2520-254	M10 X 1.5 HEX NUT GRADE 8.8	3
3	2520-465	5/8 FLANGE HEX NUT GRADE 8	2
4	2525-253	M10 LOCKWASHER	3
5	2966-140-STF-PFW	RIGHT HAND SHARK TOOTH FINGER WHEEL POLY FLOATER	1
6	2966-141-STF-PFW	LEFT HAND SHARK TOOTH FINGER WHEEL POLY FLOATER	1
7	2966-919	MONOSEM RESIDUE MANAGER ARM SUB-ASSEMBLY	1

PART IDENTIFICATION

2967-005-ST-PFW

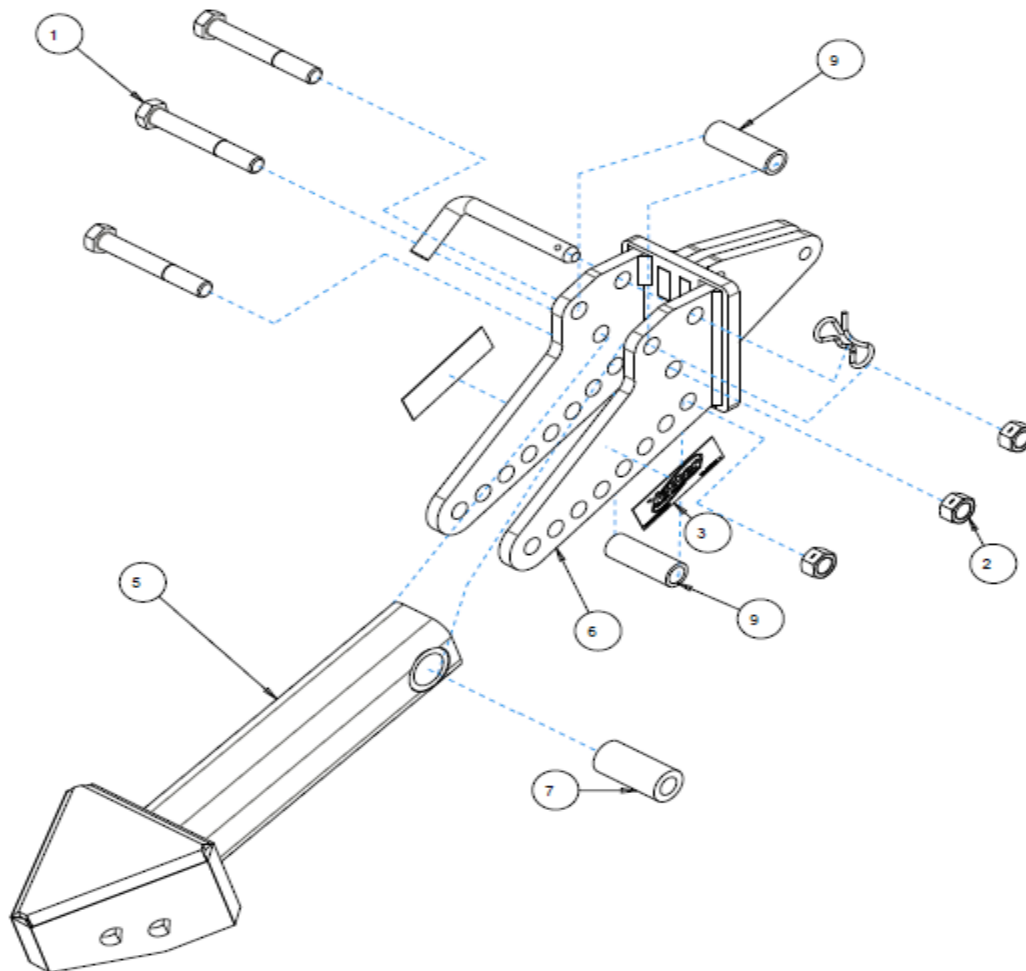


ISO2967-005-ST-PFW

ITEM	PART NO.	DESCRIPTION	QTY
1	2502-253	M10X1.5X45 8.8 HHCS ZP	3
2	2520-254	M10 X 1.5 HEX NUT, CLASS 8, ZP	3
3	2520-465	5/8-11 SER. FLANGE NUT, GR 8, ZP	2
4	2525-253	M10 MED. LOCKWASHER ZP	3
5	2966-140-ST-PFW	SHRKTH POLY FLOATER WHEEL ASSY,RH,3"D-BOLT	1
6	2966-141-ST-PFW	SHRKTH POLY FLOATER WHEEL ASSY,LH,3"D-BOLT	1
7	2966-919	MONOSEM DUAL WL R.M. SUBASSEMBLY	1

PART IDENTIFICATION

2966-919 ARM ASSEMBLY

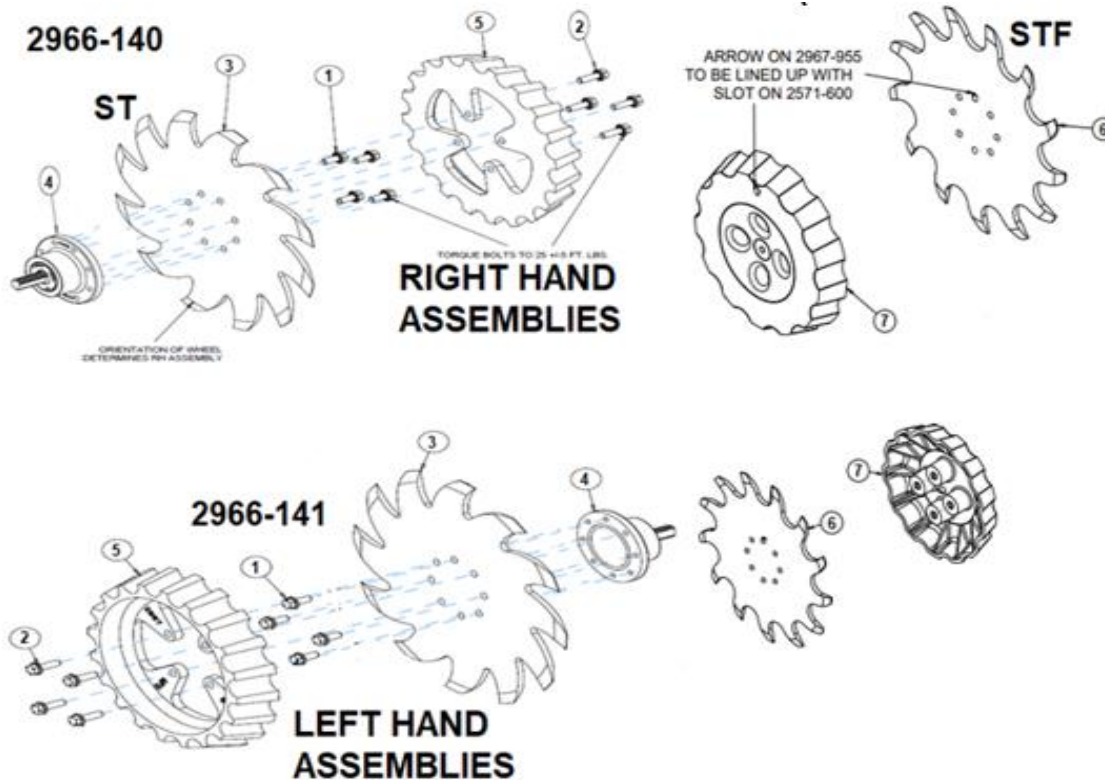


ITEM	PART NO.	DESCRIPTION	QTY
1	2502-316	1/2-13 X 3-1/2 HHCS GR5 ZP	3
2	2520-357	1/2-13 LOCK HEX NUT, GR A, ZP	3
3	2565-179	YETTER DECAL 1" X 3"	2
4	2570-448	.120 BOWTIE LOCKING COTTER ZP	1
5	2966-2021	FLTNG DUAL WHL ARM W.A.	1
6	2966-269	MONOSEM SINGLE ARM RM W.A.	1
7	2966-481	PIVOT BUSHING	1
8	2967-807	ATTACHMENT PIN, 90 DEG., ZP	1
9	2984-349	SUPPORT BUSHING	2

PARTS IDENTIFICATION

2966-140 RIGHT HAND WHEEL ASSEMBLY

2966-141 LEFT HAND WHEEL ASSEMBLY



ITEM	PART #	DESCRIPTION	QTY
1	2502-220	5/16-18 X ¾ HHFS GR5 ZP	4
2	2502-221	5/16-18 X 1 GR 5 ZP	4
3	2571-286	SHARKTOOTH WHEEL, 8 BOLT	1
4	2965-500	HUB ASSEMBLY, 1.406 SPINDLE	1
5	2967-560	FLOATER WHEEL	1
6	2571-600	SHARKTOOTH FINGER WHEEL	1
7	2967-955	STF TIMED FLOATER WHEEL	1

NOTES

NOTES



A Tradition of Solutions since 1930

Yetter Farm Equipment Co

PO BOX 358 109 S. McDonough

Colchester, IL 62326-0358

Phone: 309-776-4111

Toll Free: 800-447-5777

Email: info@yetterco.com

For updated models and manuals visit the Yetter website:

www.yetterco.com

© Yetter Farm Equipment Co. All Rights Reserved

2565-995  09/2025