



2966-003
RESIDUE MANAGER
FOR 60/90 AIR SEEDER OPENER

OPERATOR'S MANUAL
PART IDENTIFICATION



2565-759_REV_M • 08/2024

YETTER MANUFACTURING CO.
FOUNDED 1930

Colchester, IL 62326-0358
Toll free: 800/447-5777
309/776-3222 (Fax)
Website: www.yetterco.com
E-mail: info@yetterco.com

YETTER

FOREWORD


You've just joined an exclusive but rapidly growing club.


For our part, we want to welcome you to the group and thank you for buying a Yetter product.


We hope your new Yetter products will help you achieve both goals-increase your productivity and increase your efficiency so that you may generate more profit.


This operator's manual has been designed into four major sections: Foreword, Safety Precautions, Installation Instructions and Parts Breakdown.

This **SAFETY ALERT SYMBOL** indicates important safety messages in the manual. When you see this symbol, be alert to the possibility of **PERSONAL INJURY** and carefully read the message that follows.

 **DANGER:** Indicates an imminently hazardous situation which, if not avoided "will" result in death or serious injury. This signal word is to be limited to the most extreme situations

 **WARNING:** Indicates a potentially hazardous situation which, if not avoided, "could" result in death or serious injury.

 **CAUTION:** Indicates a potentially hazardous situation, which if not avoided, "may" result in minor or moderate injury. It may also be used to alert against unsafe practices.

 **NOTICE:** Indicates information considered important, but not hazard related (e.g., messages relating to property damage).

It is the responsibility of the user to read the operator's manual and comply with the safe and correct operating procedure and to lubricate and maintain the product according to the maintenance schedule in the operator's manual.

The user is responsible for inspecting his machine and for having parts repaired or replaced when continued use of the product would cause damage or excessive wear to the other parts.

It is the user's responsibility to deliver his machine to the Yetter dealer who sold him the product for service or replacement of defective parts, which are covered by the warranty policy.

If you are unable to understand or follow the instructions provided in this publication, consult your local Yetter dealer or contact:

YETTER MANUFACTURING CO.

309/776-4111

800/447-5777

309/776-3222 (FAX)

Website: www.yetterco.com

E-mail: info@yetterco.com

WARRANTY

Yetter Manufacturing warrants all products manufactured and sold by it against defects in material. This warranty being expressly limited to replacement at the factory of such parts or products as shall appear to be defective after inspection. This warranty does not obligate the Company to bear cost of labor in replacement of parts. It is the policy of the Company to make improvements without incurring obligations to add them to any unit already sold. No warranty is made or authorized to be made, other than herein set forth. This warranty is in effect for one year after purchase.

DEALER: _____

Yetter Manufacturing warrants its own products only and cannot be responsible for damages to equipment on which mounted.



SAFETY PRECAUTIONS



A brief description of signal words that may be used in this manual:

DANGER: Indicates an imminently hazardous situation which, if not avoided “will” result in death or serious injury. This signal word is to be limited to the most extreme situations.

WARNING: Indicates a potentially hazardous situation which, if not avoided, “could” result in death or serious injury.

CAUTION: Indicates a potentially hazardous situation, which if not avoided, “may” result in minor or moderate injury. It may also be used to alert against unsafe practices.

NOTICE: Indicates information considered important, but not hazard related (e.g., messages relating to property damage).

Consult your implement and tractor operator’s manual for correct and safe operating practices. Be aware of towed implement width and allow safe clearance.

Safety decals are placed on the implement to alert the operator and others to the risk of personal injury or unsafe operation during normal operations and servicing.

1. The safety decals must be kept clean and in good condition to ensure that they are legible.
2. Safety decals must be replaced if they are missing or illegible.
3. When components are replaced during repair or servicing, check that the new components include the necessary safety signs.
4. Replacement safety decals may be obtained from your local dealer.



WARNING

Read these instructions carefully to acquaint yourself with the Equipment. Working with unfamiliar equipment can lead to accidents.

Never park the equipment on a steep incline or leave the equipment running unattended.

Never clean, lubricate or adjust a machine that is in motion.

Always check that straps are secure.

Make sure latches are in pinned position when moving equipment.

Do not allow children to operate this equipment.

Do not allow riders on the equipment, trailer and/or pick-up.

Use speed and caution dictated by the terrain being traversed. Do not operate on any slope steep enough to cause tipping or loss of control.

Read and understand the operator’s manual and require all other persons who will operate the equipment to do the same.

If operating on public roadways, where legal, be certain all lighting is operating properly and observe all traffic laws.

Beware of increased stopping distances and control effort when operating with implements attached.

Be familiar with all controls and be prepared to stop equipment quickly in an emergency.

FAILURE TO HEED MAY RESULT IN PERSONAL INJURY OR DEATH.

BOLT TORQUE

Mounting bolts and hardware

Before operating the Residue Manager for the first time, check to be sure that all hardware is tight. Check all hardware again after approximately 50 hours of operation and at the beginning of each planting season.

All hardware used on the Residue Manager is Grade 5 unless otherwise noted. Grade 5 cap screws are marked with three radial lines on the head. If hardware must be replaced, be sure to replace it with hardware of equal size, strength and thread type. Refer to the torque values chart when tightening hardware.

NOTICE: Over tightening hardware can cause as much damage as when under tightening. Tightening hardware beyond the recommended range can reduce its shock load capacity.


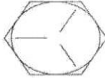

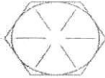


The chart below is a guide for proper torque. Use it unless a specified torque is called out elsewhere in the manual.

Torque is the force you apply to the wrench handle or the cheater bar, times the length of the handle or bar.

Use a torque wrench whenever possible.

The following table shows torque in ft. lbs. for coarse thread hardware.

BOLT DIA. AND THREADS PER INCH	 GRADE 2	 OR  GRADE 5 A-325	 GRADE 8
1/4	6	10	14
5/16	12	20	30
3/8 - 16	25	35	50
7/16 - 14	35	55	80
1/2 - 13	55	85	125
9/16 - 12	75	125	175
5/8 - 11	105	170	235
3/4 - 10	185	305	425
7/8 - 9	170	445	690
1-8	260	670	1030
1 1/8 - 7	365	900	1460
1 1/4 - 7	515	1275	2060
1 3/8 - 6	675	1675	2700
1 1/2 - 6	900	2150	3500
1 3/4 - 5	1410	3500	5600

Lubricate all bearings and moving parts as assembled and make certain that they work freely.



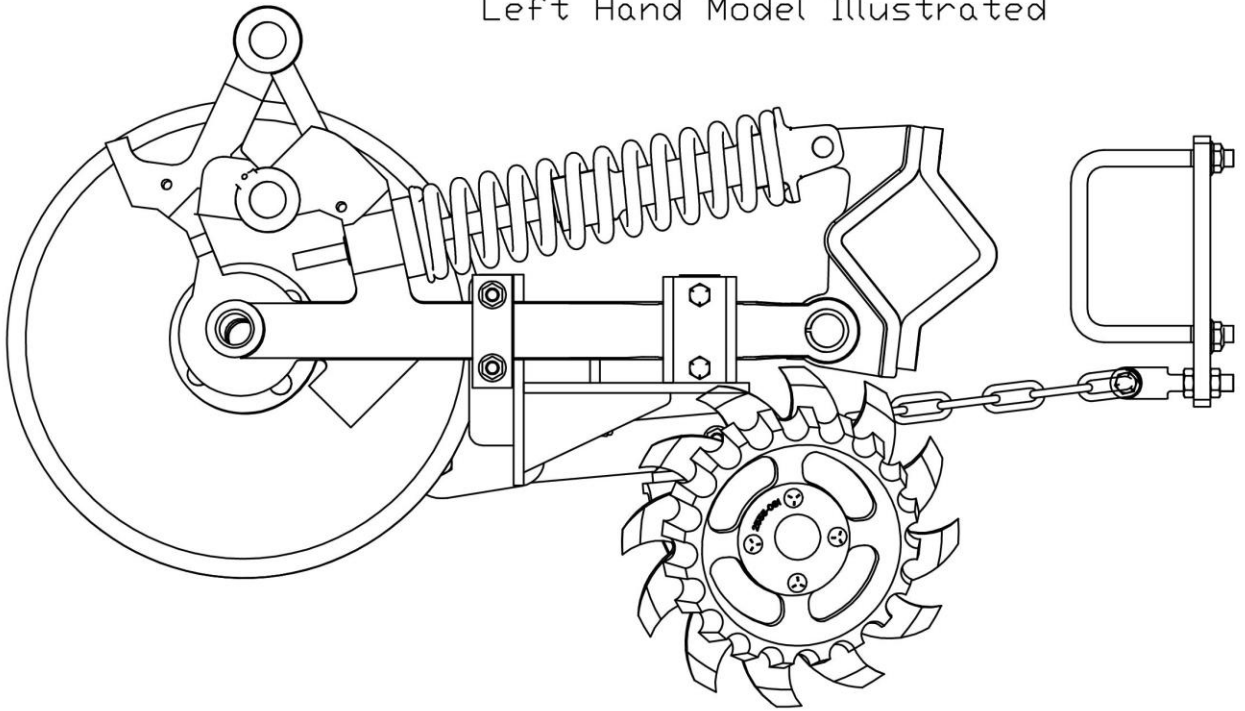
WARNING: Never work around the toolbar/implement while in a raised position without using safety lockups.



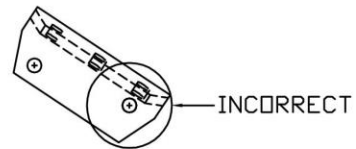
CAUTION: The Residue manager attachments are very heavy. Pay extra attention to lifting techniques while handling and or maneuvering the opener during assembly. Failure to do so may lead to personal injury.

ASSEMBLY INSTRUCTIONS

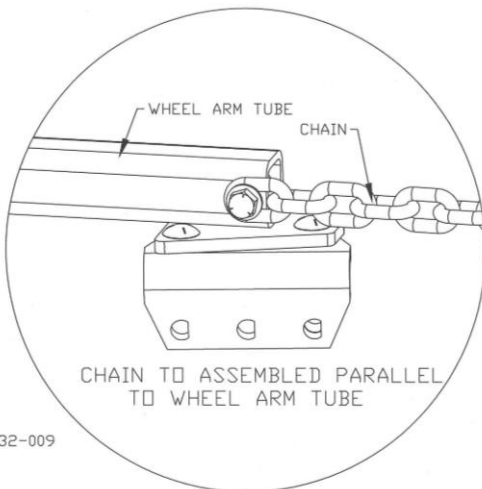
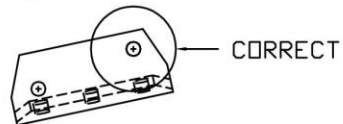
Left Hand Model Illustrated



I732-003



IMPORTANT:
MOUNTING HOLE CLOSEST TO THE
CORNER SHOULD ALWAYS BE TO
THE FRONT.



I732-009

OPERATING INSTRUCTIONS

DEPTH

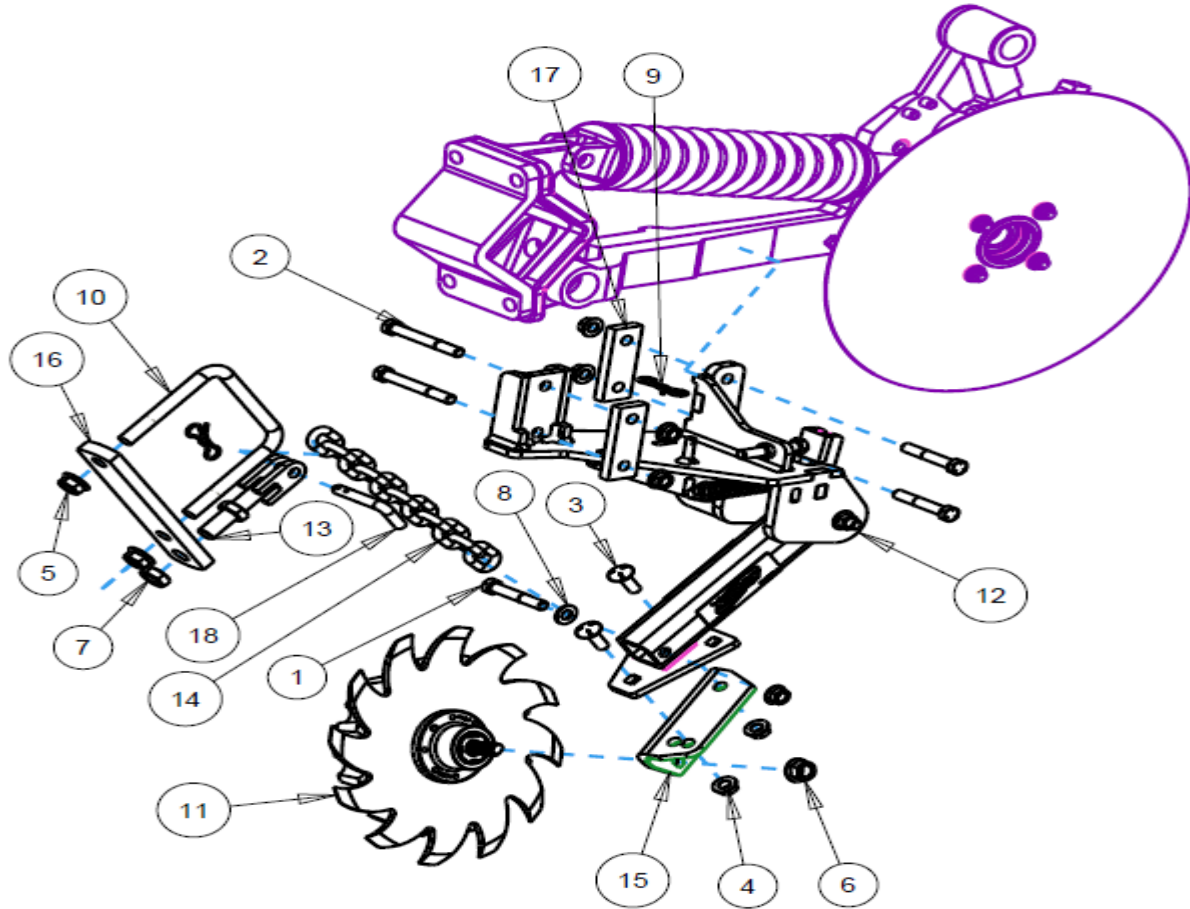
Remove spring locking pin and adjustment pin from the wheel support. Raise or lower the stem and wheel assembly so the teeth of the wheels are in solid contact with the residue and lightly touching the soil.

The function of the row cleaner is to sweep aside residue and not move soil. When using pre-plant incorporated herbicide, the row cleaner depth should be adjusted to minimize soil disturbance so the cleaner will not reduce the effectiveness of the incorporated herbicide.

ROW CLEANER DO'S AND DON'TS

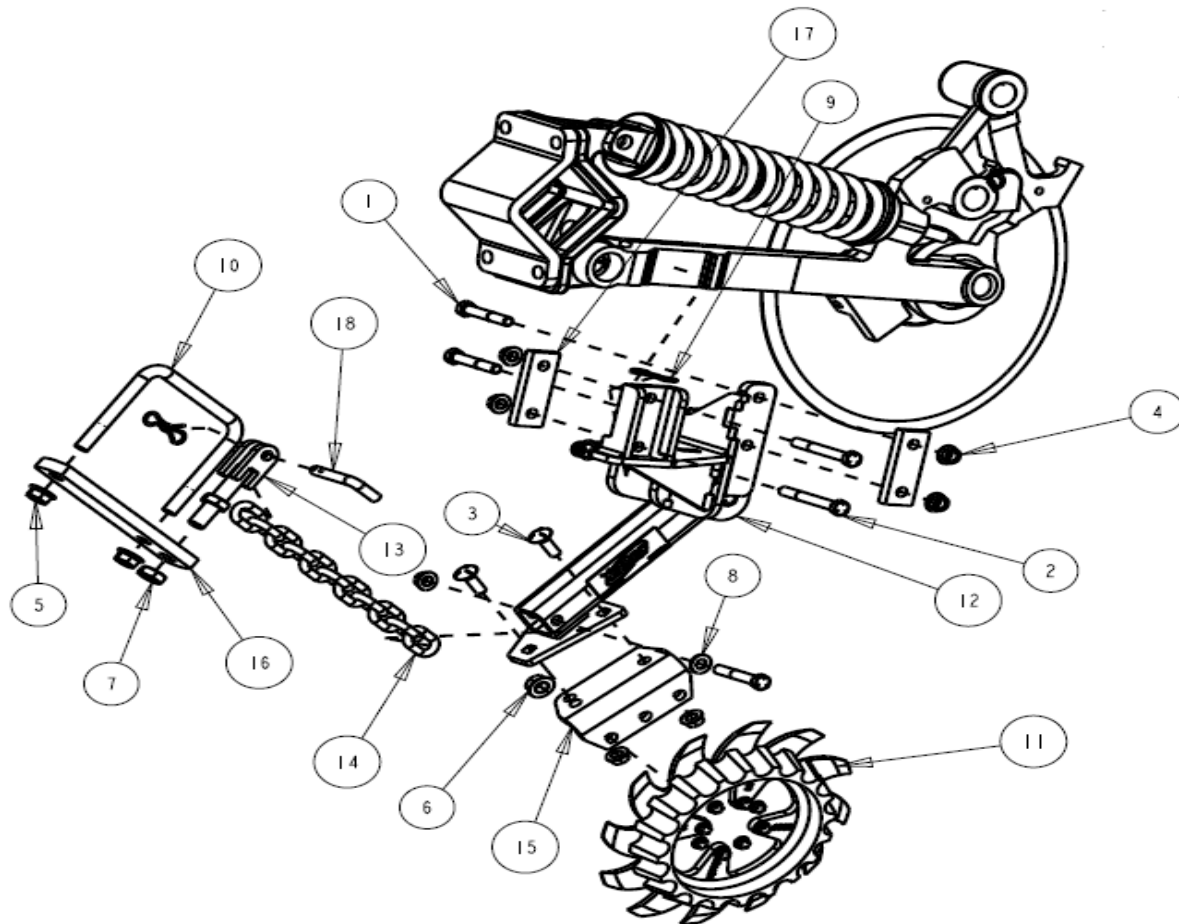
1. **DO NOT** move soil, Residue Managers are designed to move crop residue only.
2. **DO NOT** operate planter at slow speeds, ground speed affects how aggressive the spoke wheels are; operate at sufficient speed to maintain good residue flow.
3. **DO NOT** expect 100% of crop residue to be cleared, it is not necessary and would necessitate engaging the soil. The width of path cleared depends on ground conditions, depth setting and ground speed.
4. **DO** expect to see wheels occasionally quit turning, indicates ideal (shallow) setting which is not moving dirt.

PARTS IDENTIFICATION
2966-003-L-ST-FW
LEFT HAND ASSEMBLY



ITEM	PART NO.	DESCRIPTION	QTY
1	2502-313	1/2-13 X 3 HHCS GR 5 ZP	3
2	2502-364	1/2-13 X 4 HHCS GR. 5 ZP	2
3	2505-339	1/2-13 X 1-1/2 CARBLT G5ZP	2
4	2520-361	1/2-13 FLANGE WHZLCK HXNT, GR 5, ZP	7
5	2520-464	5/8-11 WHIZLOCK HEX NUT, GR 2, ZP	2
6	2520-465	5/8-11 SER. FLANGE NUT, GR 8, ZP	1
7	2520-502	3/4-10 HEX JAM NUT, GR 2, ZP	2
8	2526-352	1/2 SAE FLATWASHER ZP	1
9	2570-448	.120 BOWTIE LOCKING COTTER ZP	2
10	2570-765	5/8 X 6 X 5-1/2 U-BOLT ZP	1
11	2966-140-ST-FW	SHRKTH ASSY,RH,3"D-BOLT FLT WL	1
12	2966-187	LH ARM ASSEMBLY	1
13	2966-241	CLEVIS W.A. ZP.	1
14	2967-718	LIFT CHAIN (PEERLESS CHAIN #50010060)	1
15	2967-720-L	FLOATING SINGLE WHEEL MOUNT,LH	1
16	2967-783	CLAMP PLATE, CHAIN TIGHTENER	1
17	2967-788	CLAMP PLATE	2
18	2984-326	R.M. UPSTOP PIN ZP	1

PARTS IDENTIFICATION
2966-003-R-ST-FW
 RIGHT HAND ASSEMBLY

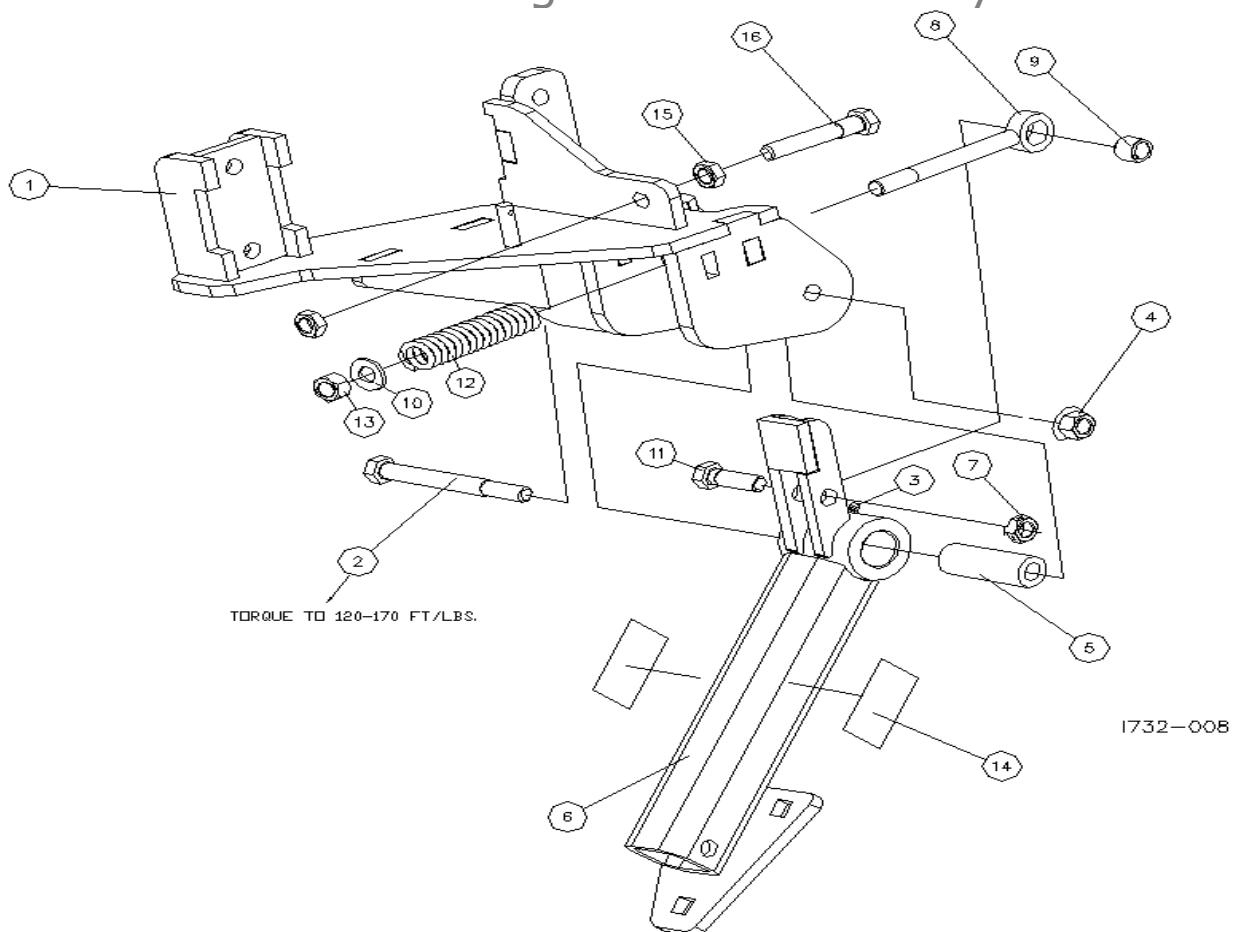


ITEM	PART NO.	DESCRIPTION	QTY
1	2502-313	1/2-13 X 3 HHCS GR 5 ZP	3
2	2502-364	1/2-13 X 4 HHCS GR. 5 ZP	2
3	2505-339	1/2-13 X 1-1/2 CARBLT G5ZP	2
4	2520-361	1/2-13 FLANGE WHZLCK HXNT, GR 5, ZP	7
5	2520-464	5/8-11 WHIZLOCK HEX NUT, GR 2, ZP	2
6	2520-465	5/8-11 SER. FLANGE NUT, GR 8, ZP	1
7	2520-502	3/4-10 HEX JAM NUT, GR 2, ZP	2
8	2526-352	1/2 SAE FLATWASHER ZP	1
9	2570-448	.120 BOWTIE LOCKING COTTER ZP	2
10	2570-765	5/8 X 6 X 5-1/2 U-BOLT ZP	1
11	2966-141-ST-FW	SHRKTH ASSY, LH, 3"D-BOLT FLT WL	1
12	2966-188	RH ARM ASSEMBLY	1
13	2966-241	CLEVIS W.A. ZP.	1
14	2967-718	LIFT CHAIN (PEERLESS CHAIN #50010060)	1
15	2967-720-R	FLOATING SINGLE WHEEL MOUNT, RH	1
16	2967-783	CLAMP PLATE, CHAIN TIGHTENER	1
17	2967-788	CLAMP PLATE	2
18	2984-326	R.M. UPSTOP PIN ZP	1

PARTS IDENTIFICATION

2966-187 Left Hand Assembly (Shown)

2966-188 Right Hand Assembly

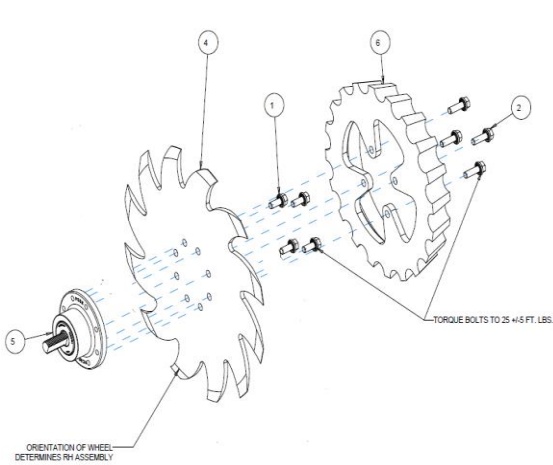


DET	QTY	PART NO.	DESCRIPTION
1	1	2966-257	FLOATING RM MOUNT W.A., LH (SHOWN)
	1	2966-256	FLOATING RM MOUNT W.A., RH
2	1	2502-361	1/2-13 X 4-1/2 HHCS GR 8 ZP
3	1	2533-110	1/4-28 ZERK STRAIGHT SELF-TAP
4	1	2520-361	1/2-13 FLANGE WHIZLOCK HXNT ZP
5	1	2967-784	INNER BUSHING
6	1	2966-189	ARM & BUSHING ASSEMBLY
	2	2967-797	SLEEVE, FRITEX-C TFP 16TH16
7	1	2520-364	1/2-13 HEX LOCKNUT, JAM ZP
8	1	2570-774	90 SERIES RM EYEBOLT, ZYD
9	1	2967-622	9/16" SPACER ZYD
10	1	2526-352	1/2 SAE FLATWASHER ZP
11	1	2502-317	1/2-13 X 1-3/4 HHCS GR. 5 ZP
12	1	2550-776	LEE SPRING# LHL 1000A 11
13	1	2520-363	1/2-13 NYL INSERT LOCKNUT ZYD.
14	2	2565-162	YETTER DECAL, 1-1/2 X 4-1/2
15	2	2520-356	1/2-13 HEX JAM NUT ZYD.
16	1	2502-355	1/2-13 X 3 (2-1/4THD) HHCS ZYD.

01/2011 - PRESENT

PARTS IDENTIFICATION

2966-140-ST-FW



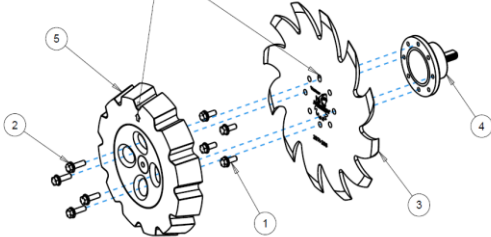
ITEM	PART NO.	DESCRIPTION	QTY
1	2502-220	5/16-18 X 3/4 HHFS GR5 ZP	4
2	2502-221	5/16-18 X 1 HHFS GR5 ZP	4
3	2515-562	13" WHEEL COVER, BLACK	2
4	2571-286	SHARKTOOTH WHEEL, 8 BOLT	1
5	2965-500	HUB ASSEMBLY, 1.406 SPINDLE	1
6	2967-560	FLOATER WHEEL	1

2966-140-ST-PFW

ITEM	PART NO.	DESCRIPTION	QTY
1	2502-220	5/16-18 X 3/4 HHFS GR5 ZP	4
2	2502-221	5/16-18 X 1 HHFS GR5 ZP	4
3	2571-286	SHARKTOOTH WHEEL, 8 BOLT	1
4	2965-500	HUB ASSEMBLY, 1.406 SPINDLE	1
5	2967-955	SHARKTOOTH FINGER FLOATER WHEEL	1

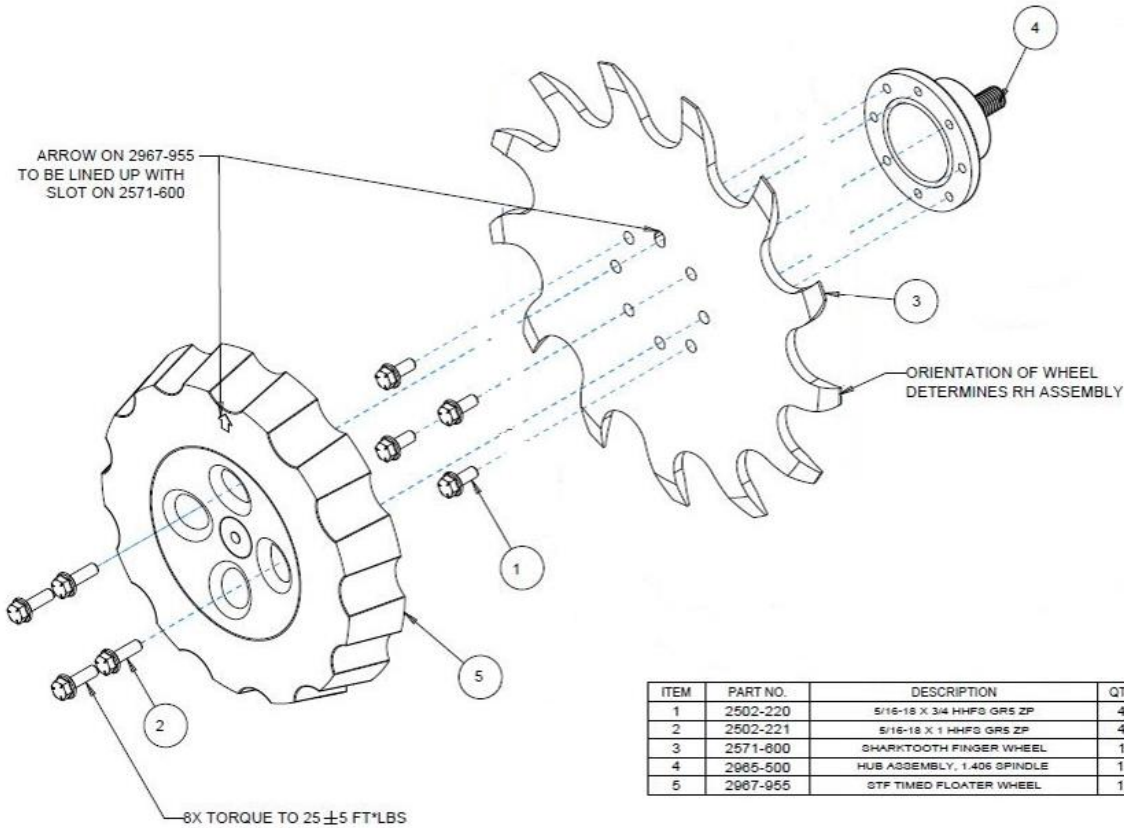


LINE UP ARROW ON FLOATER WITH
SLOT ON WHEEL TO INSURE
PROPER TIMING OF NOTCHES.



2966-140-STF-PFW

RIGHT HAND SHARKTOOTH FINGER WHEEL ASSEMBLY



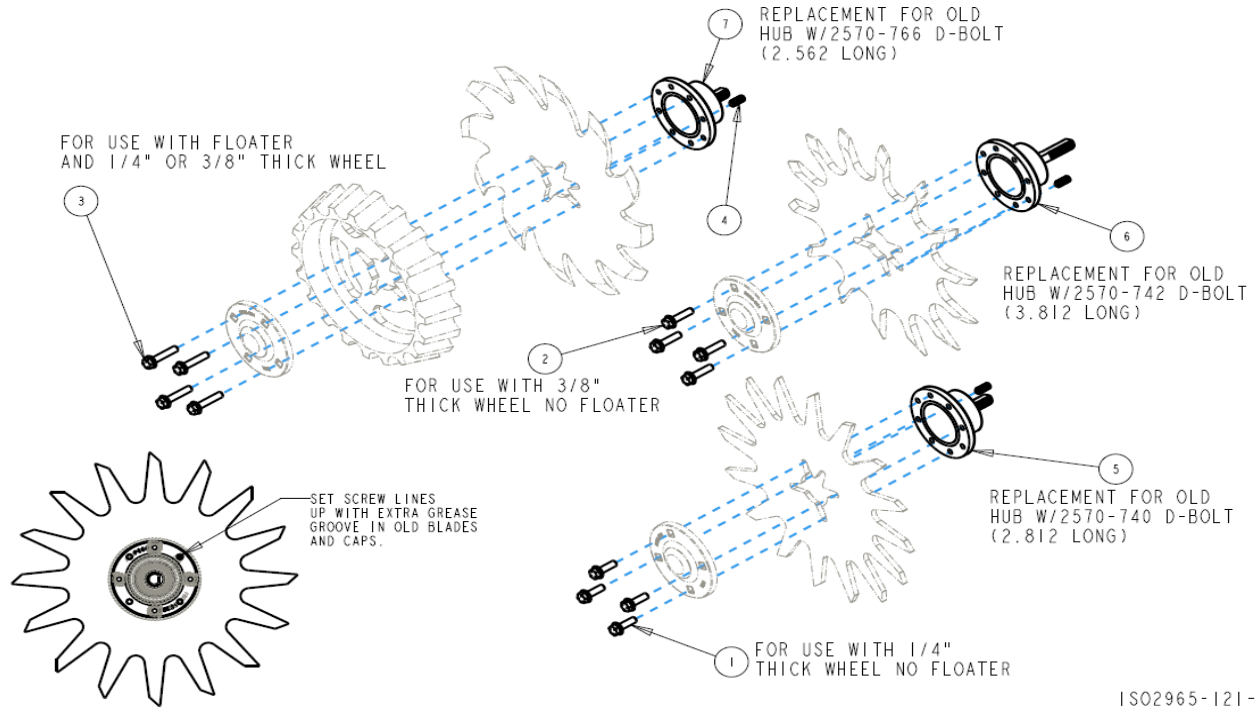
ITEM	PART NO.	DESCRIPTION	QTY
1	2502-220	5/16-18 X 3/4 HHFS GR5 ZP	4
2	2502-221	5/16-18 X 1 HHFS GR5 ZP	4
3	2571-600	SHARKTOOTH FINGER WHEEL	1
4	2965-500	HUB ASSEMBLY, 1.406 SPINDLE	1
5	2967-955	STF TIMED FLOATER WHEEL	1

FIELD SERVICE KITS

2965-119 - SERVICE KIT FOR 2570-740-2.812 D-BOLT

2965-120 - SERVICE KIT FOR 2570-742-3.812 D-BOLT

2965-121 - SERVICE KIT FOR 2570-766-2.562 D-BOLT



ITEM	PART NO	DESCRIPTION	QTY
1	2502-221	5/16-18 X 1 HHFS GRADE 5	4
2	2502-222	5/16-18 X 1-1/4 HHFS GRADE 5	4
3	2502-225	5/16-18 X 1-1/2 HHFS GRADE 5	4
4	2940-560	SET SCREW	1
5	2965-500	HUB ASSEMBLY 1.406 SPINDLE	1
6	2965-501	HUB ASSEMBLY 2.406 SPINDLE	1
7	2965-502	HUB ASSEMBLY 1.157 SPINDLE	1



ITEM	PART NO	DESCRIPTION	QTY
1	2505-207	5/16-18 X 1-1/4 CARRIAGE HEAD BOLT GRADE 5	4
2	2520-206	5/16-18 FLANGE LOCK NUT	4
3	2570-766	D-BOLT FLANGE HEAD 5/8-11 X 2.562 GRADE 8	1
4	2965-128	HUB/BEARING ASSEMBLY	1
	2550-069	SEAL	1
	2570-594	BEARING	1
	2570-715	INSERT	1
	2965-351	HUB	1
	2533-110	GREASE FITTING	1
5	2965-352	HUB CAP	1
6	2967-602	SHARK TOOTH WHEEL	1
7	2520-465	5/8-11 FLANGE LOCK NUT GRADE 8	1



A Tradition of Solutions since 1930

Yetter Farm Equipment Co

PO BOX 358 109 S. McDonough

Colchester, IL 62326-0358

Phone: 309-776-4111

Toll Free: 800-447-5777

Email: info@yetterco.com

For updated models and manuals visit the Yetter website:

www.yetterco.com

© Yetter Farm Equipment Co. All Rights Reserved

2565-759_REV_M • 08/2024