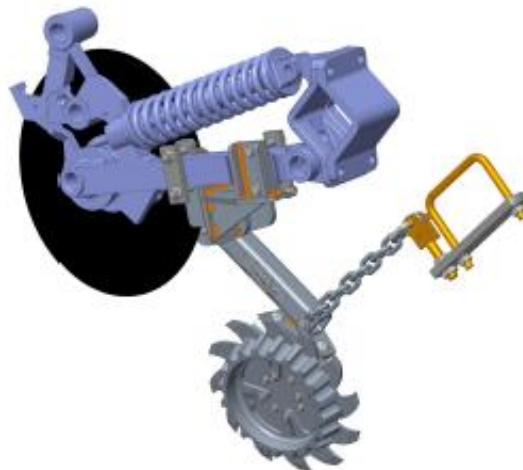




2966-003
RESIDUE MANAGER
FOR 60/90 AIR SEEDER OPENER

OPERATOR'S MANUAL
PART IDENTIFICATION



2565-759_REV_H • 07/2021

YETTER MANUFACTURING CO.
FOUNDED 1930

Colchester, IL 62326-0358
Toll free: 800/447-5777
309/776-3222 (Fax)
Website: www.yetterco.com
E-mail: info@yetterco.com

YETTER

FOREWORD

You've just joined an exclusive but rapidly growing club.

For our part, we want to welcome you to the group and thank you for buying a Yetter product.

We hope your new Yetter products will help you achieve both goals-increase your productivity and increase your efficiency so that you may generate more profit.

This operator's manual has been designed into four major sections: Foreword, Safety Precautions, Installation Instructions and Parts Breakdown.



This **SAFETY ALERT SYMBOL** indicates important safety messages in the manual. When you see this symbol, be alert to the possibility of **PERSONAL INJURY** and carefully read the message that follows.

The word **NOTE** is used to convey information that is out of context with the manual text. It contains special information such as specifications, techniques and reference information of a supplementary nature.

The word **IMPORTANT** is used in the text when immediate damage will occur to the machine due

to improper technique or operation. Important will apply to the same information as specified by note only of an immediate and urgent nature.

It is the responsibility of the user to read the operator's manual and comply with the safe and correct operating procedure and to lubricate and maintain the product according to the maintenance schedule in the operator's manual.

The user is responsible for inspecting his machine and for having parts repaired or replaced when continued use of the product would cause damage or excessive wear to the other parts.

It is the user's responsibility to deliver his machine to the Yetter dealer who sold him the product for service or replacement of defective parts, which are covered by the warranty policy.

If you are unable to understand or follow the instructions provided in this publication, consult your local Yetter dealer or contact:

YETTER MANUFACTURING CO.

309/776-4111

800/447-5777

309/776-3222 (FAX)

Website: www.yetterco.com

E-mail: info@yetterco.com

WARRANTY

Yetter Manufacturing warrants all products manufactured and sold by it against defects in material. This warranty being expressly limited to replacement at the factory of such parts or products as shall appear to be defective after inspection. This warranty does not obligate the Company to bear cost of labor in replacement of parts. It is the policy of the Company to make improvements without incurring obligations to add them to any unit already sold. No warranty is made or authorized to be made, other than herein set forth. This warranty is in effect for one year after purchase.

DEALER: _____

Yetter Manufacturing warrants its own products only and cannot be responsible for damages to equipment on which mounted.

SAFETY

A brief description of signal words that may be used in this manual:

CAUTION: Used as a general reminder of good safety practices or to direct attention to unsafe practices.

WARNING: Denotes a specific potential hazard.

DANGER: Denotes the most serious specific potential hazard.

SAFETY PRECAUTIONS

You can make your farm a safer place to live and work if you observe the safety precautions given. Study these precautions carefully and insist that those working with you and for you follow them.

Finally, remember this: an accident is usually caused by someone's carelessness, neglect or oversight.



WARNING

Never clean, lubricate or adjust a machine that is in motion. Always lower or block the implement before performing service.

If the machine must be serviced in the raised position, jack or block it up to prevent it from accidentally falling and injuring someone.

Do not allow riders on the tractor or implement.

Use speeds and caution dictated by the terrain being traversed. Do not operate on any slope steep enough to cause tipping or loss of control.

Be sure all personnel are clear of the immediate area before operating.

Read and understand the operator's manual and require all other persons who will operate the equipment to do the same.

Be familiar with all tractor and implement controls and be prepared to stop engine and implements quickly in an emergency.



CAUTION

Consult your implement and tractor operator's manual for correct and safe operating practices.

Beware of towed implement width and allow safe clearance.

FAILURE TO HEED MAY RESULT IN PERSONAL INJURY OR DEATH.

BOLT TORQUE

Mounting bolts and hardware

Before operating the Residue Manager for the first time, check to be sure that all hardware is tight. Check all hardware again after approximately 50 hours of operation and at the beginning of each planting season.

All hardware used on the Residue Manager is Grade 5 unless otherwise noted. Grade 5 cap screws are marked with three radial lines on the head. If hardware must be replaced, be sure to replace it with hardware of equal size, strength and thread type. Refer to the torque values chart when tightening hardware.







Important: Over tightening hardware can cause as much damage as when under tightening. Tightening hardware beyond the recommended range can reduce its shock load capacity.

The chart below is a guide for proper torque. Use it unless a specified torque is called out elsewhere in the manual.

Torque is the force you apply to the wrench handle or the cheater bar, times the length of the handle or bar.

Use a torque wrench whenever possible.

The following table shows torque in ft. lbs. for coarse thread hardware.

BOLT DIA. AND THREADS PER INCH	 GRADE 2	 GRADE 5	OR  A-325	 GRADE 8
1/4	6		10	14
5/16	12		20	30
3/8 - 16	25		35	50
7/16 - 14	35		55	80
1/2 - 13	55		85	125
9/16 - 12	75		125	175
5/8 - 11	105		170	235
3/4 - 10	185		305	425
7/8 - 9	170		445	690
1-8	260		670	1030
1 1/8 - 7	365		900	1460
1 1/4 - 7	515		1275	2060
1 3/8 - 6	675		1675	2700
1 1/2 - 6	900		2150	3500
1 3/4 - 5	1410		3500	5600

Lubricate all bearings and moving parts as assembled and make certain that they work freely.



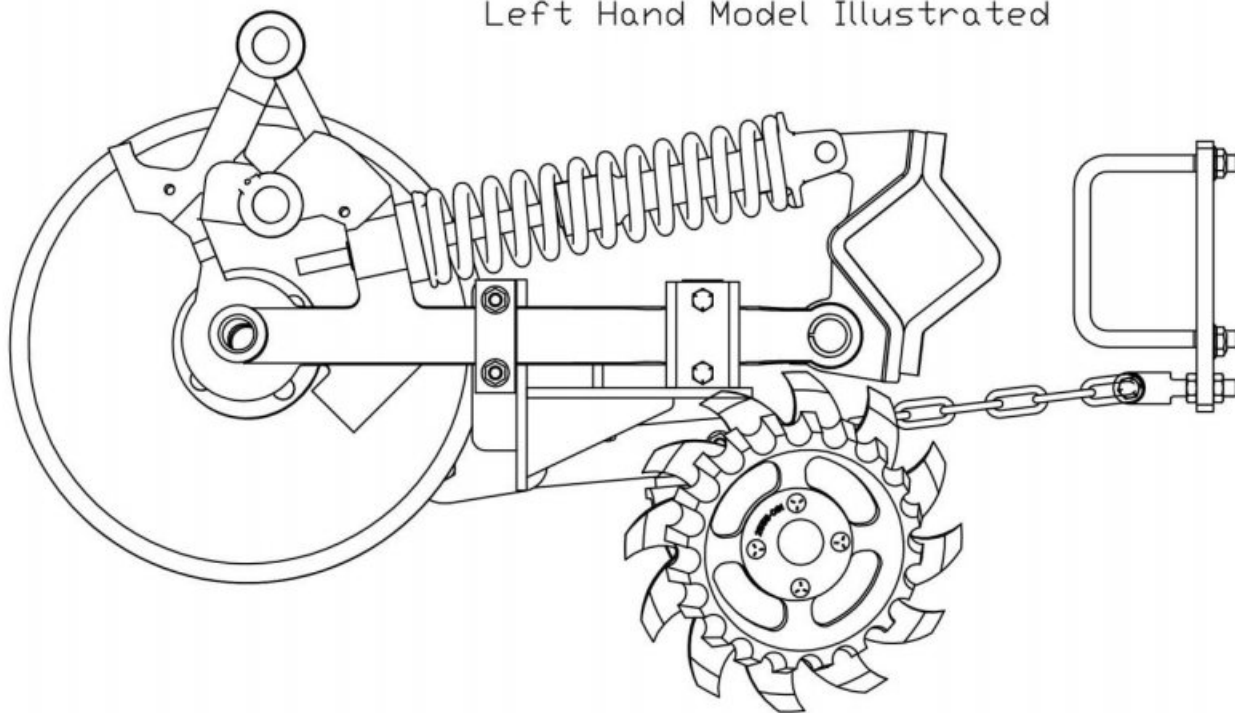
WARNING: Never work around the toolbar/implement while in a raised position without using safety lockups.



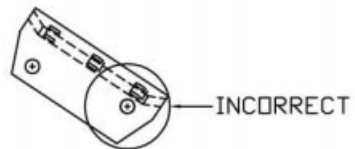
CAUTION: The Residue manager attachments are very heavy. Pay extra attention to lifting techniques while handling and or maneuvering the opener during assembly. Failure to do so may lead to personal injury.

ASSEMBLY INSTRUCTIONS

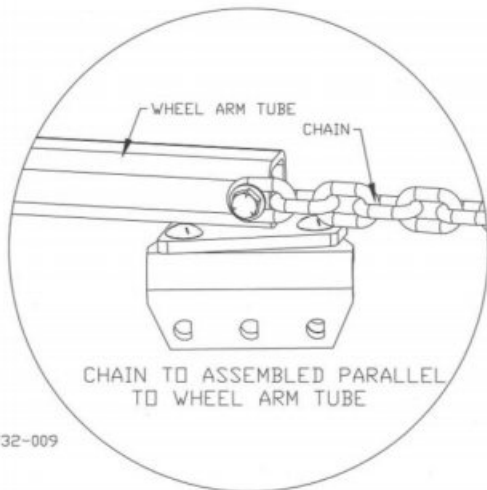
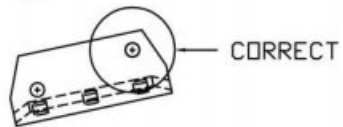
2966-002-L-STFW
Left Hand Model Illustrated



I732-003



IMPORTANT:
MOUNTING HOLE CLOSEST TO THE
CORNER SHOULD ALWAYS BE TO
THE FRONT.



I732-009

OPERATING INSTRUCTIONS

DEPTH

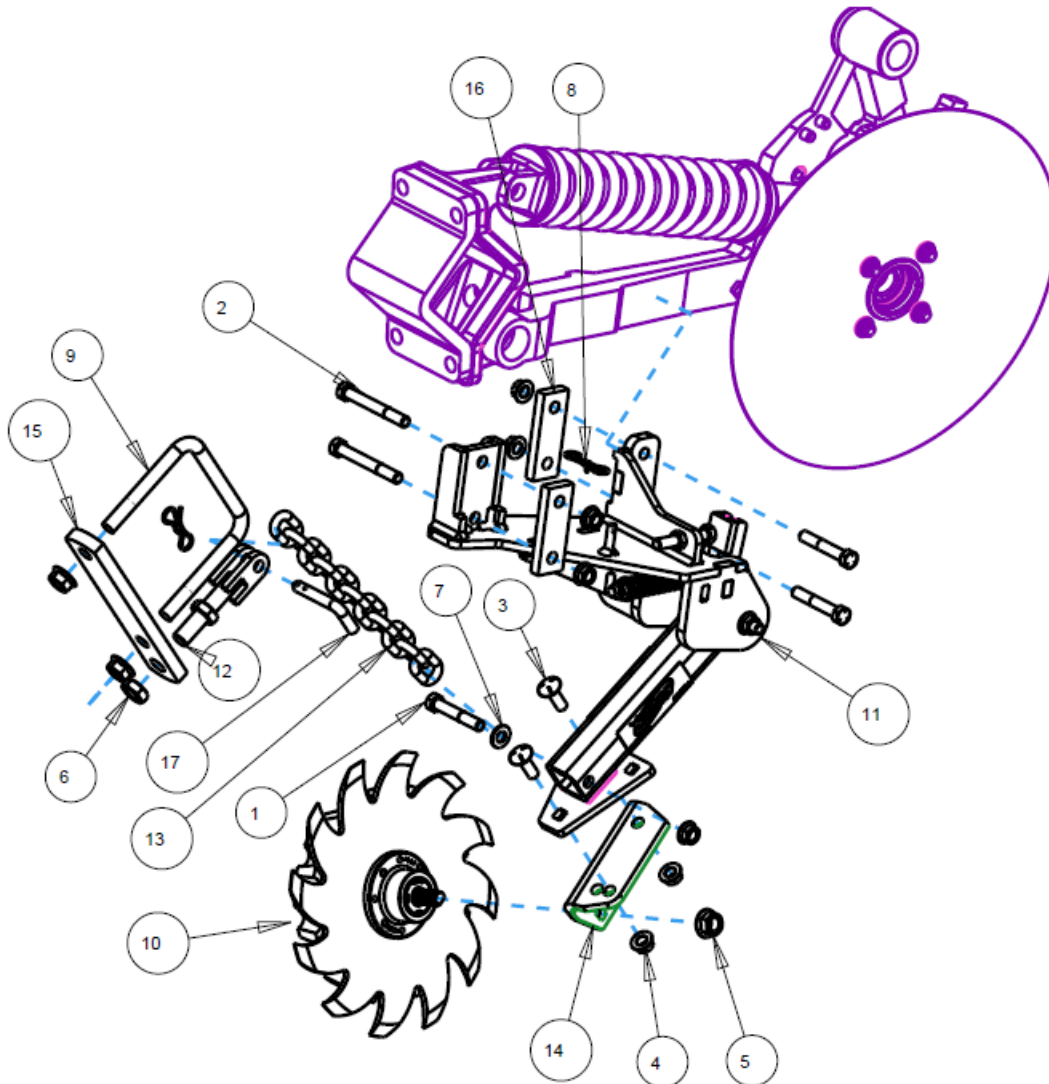
Remove spring locking pin and adjustment pin from the wheel support. Raise or lower the stem and wheel assembly so the teeth of the wheels are in solid contact with the residue and lightly touching the soil.

The function of the row cleaner is to sweep aside residue and not move soil. When using pre-plant incorporated herbicide, the row cleaner depth should be adjusted to minimize soil disturbance so the cleaner will not reduce the effectiveness of the incorporated herbicide.

ROW CLEANER DO'S AND DON'TS

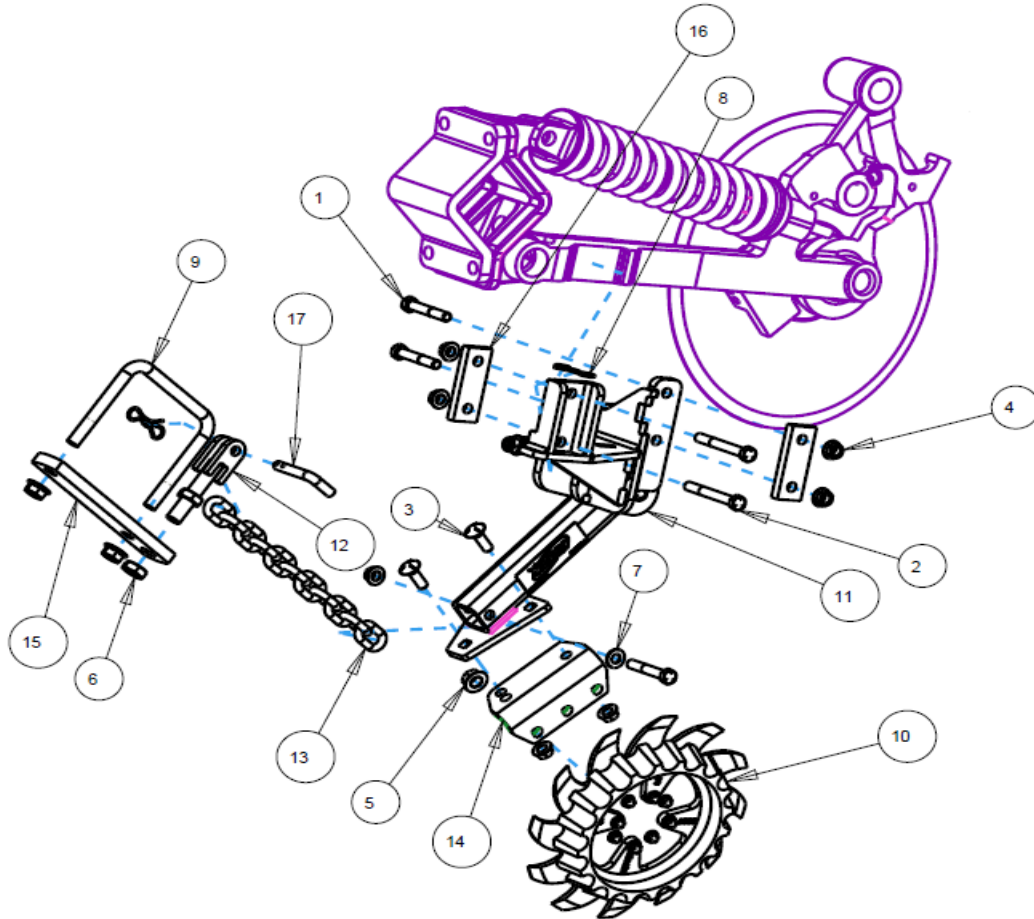
1. **DO NOT** move soil, Residue Managers are designed to move crop residue only.
2. **DO NOT** operate planter at slow speeds, ground speed affects how aggressive the spoke wheels are; operate at sufficient speed to maintain good residue flow.
3. **DO NOT** expect 100% of crop residue to be cleared, it is not necessary and would necessitate engaging the soil. The width of path cleared depends on ground conditions, depth setting and ground speed.
4. **DO** expect to see wheels occasionally quit turning, indicates ideal (shallow) setting which is not moving dirt.

PARTS IDENTIFICATION
2966-003-L-STFW
LEFT HAND ASSEMBLY



ITEM	PART NO.	DESCRIPTION	QTY
1	2502-313	1/2-13 X 3 HHCS GR 5 ZP	3
2	2502-364	1/2-13 X 4 HHCS GR. 5 ZP	2
3	2505-339	1/2-13 X 1-1/2 CARBLT G5ZP	2
4	2520-361	1/2-13 FLANGE WHZLCK HXNT, GR 5, ZP	7
5	2520-464	5/8-11 WHIZLOCK HEX NUT, GR 2, ZP	3
6	2520-502	3/4-10 HEX JAM NUT, GR 2, ZP	2
7	2526-352	1/2 SAE FLATWASHER ZP	1
8	2570-448	.120 BOWTIE LOCKING COTTER ZP	2
9	2570-765	5/8 X 6 X 5-1/2 U-BOLT ZP	1
10	2966-140-ST-FW	SHRKT ASSY,RH,3"D-BOLT FLT WL	1
11	2966-187	LH ARM ASSEMBLY	1
12	2966-241	CLEVIS W.A. ZP.	1
13	2967-718	LIFT CHAIN (PEERLESS CHAIN #50010060)	1
14	2967-720-L	FLOATING SINGLE WHEEL MOUNT,LH	1
15	2967-783	CLAMP PLATE, CHAIN TIGHTENER	1
16	2967-788	CLAMP PLATE	2
17	2984-326	R.M. UPSTOP PIN ZP	1

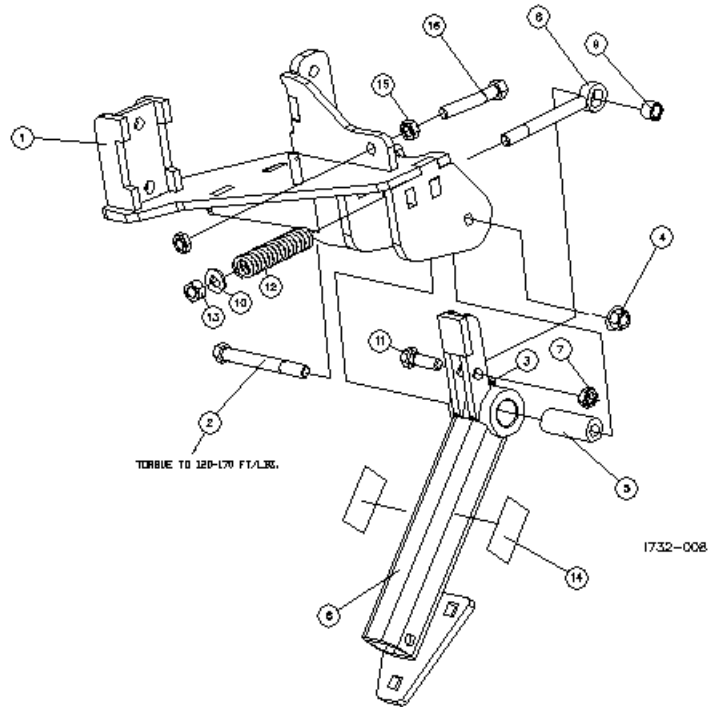
PARTS IDENTIFICATION
2966-003-R-STFW
 RIGHT HAND ASSEMBLY



ITEM	PART NO.	DESCRIPTION	QTY
1	2502-313	1/2-13 X 3 HHCS GR 5 ZP	3
2	2502-364	1/2-13 X 4 HHCS GR. 5 ZP	2
3	2505-339	1/2-13 X 1-1/2 CARBLT G5ZP	2
4	2520-361	1/2-13 FLANGE WHZLCK HXNT, GR 5, ZP	7
5	2520-464	5/8-11 WHIZLOCK HEX NUT, GR 2, ZP	3
6	2520-502	3/4-10 HEX JAM NUT, GR 2, ZP	2
7	2526-352	1/2 SAE FLATWASHER ZP	1
8	2570-448	.120 BOWTIE LOCKING COTTER ZP	2
9	2570-765	5/8 X 6 X 5-1/2 U-BOLT ZP	1
10	2966-141-ST-FW	SHRKRTH ASSY,LH,3"D-BOLT FLT WL	1
11	2966-188	RH ARM ASSEMBLY	1
12	2966-241	CLEVIS W.A. ZP.	1
13	2967-718	LIFT CHAIN (PEERLESS CHAIN #50010060)	1
14	2967-720-R	FLOATING SINGLE WHEEL MOUNT,RH	1
15	2967-783	CLAMP PLATE, CHAIN TIGHTENER	1
16	2967-788	CLAMP PLATE	2
17	2984-326	R.M. UPSTOP PIN ZP	1

PARTS IDENTIFICATION

2966-187 Left Hand Assembly (Shown) 2966-188 Right Hand Assembly

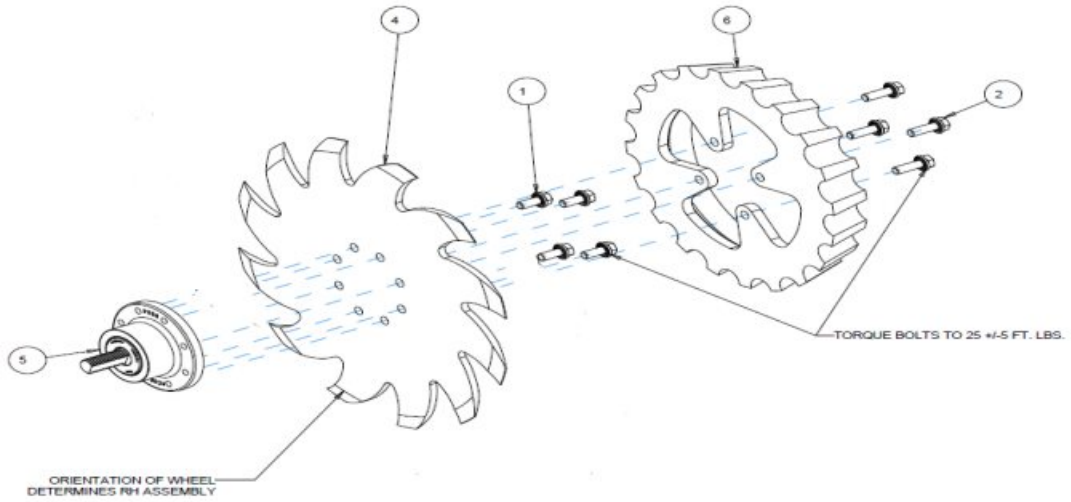


DET	QTY	PART NO.	DESCRIPTION
1	1	2888-257	FLOATING RM MOUNT W.A., LH (SHOWN)
	1	2866-256	FLOATING RM MOUNT W.A., RH
2	1	2502-361	1/2-13 X 4-1/2 HHCS GR 5 ZP
3	1	2533-110	1/4-28 ZERK STRAIGHT SELF-TAP
4	1	2520-361	1/2-13 FLANGE WHIZLOCK HXNT ZP
5	1	2887-784	INNER BUSHING
6	1	2888-189	ARM & BUSHING ASSEMBLY
	2	2867-797	SLEEVE, FRITEX-C TFP 16TH18
7	1	2520-364	1/2-13 HEX LOCKNUT, JAM ZP
8	1	2570-774	90 SERIES RM EYEBOLT, ZYD
9	1	2967-822	9/16" SPACER ZYD
10	1	2528-352	1/2 SAE FLATWASHER ZP
11	1	2502-317	1/2-13 X 1-3/4 HHCS GR. 5 ZP
12	1	2550-776	LEE SPRING# LHL 1000A 11
13	1	2520-363	1/2-13 NYL INSERT LOCKNUT ZYD.
14	2	2565-162	YETTER DECAL, 1-1/2 X 4-1/2
15	2	2520-366	1/2-13 HEX JAM NUT ZYD.
16	1	2502-355	1/2-13 X 3 (2-1/4THD) HHCS ZYD.

UPDATED 07/07/2021

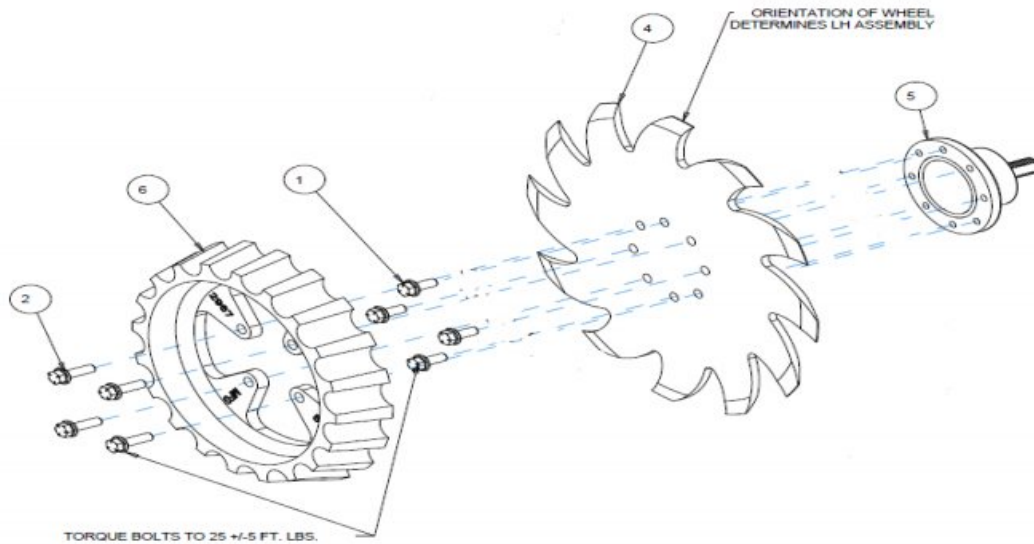
01/2011 - PRESENT

PARTS IDENTIFICATION
2966-140-ST-FW
RIGHT HAND SHARK TOOTH WHEEL ASSEMBLY



ITEM	PART NO.	DESCRIPTION	QTY
1	2502-220	5/16-18 X 3/4 HHFS GR5 ZP	4
2	2502-221	5/16-18 X 1 HHFS GR5 ZP	4
3	2515-562	13" WHEEL COVER, BLACK	2
4	2571-286	SHARKTOOTH WHEEL, 8 BOLT	1
5	2965-500	HUB ASSEMBLY, 1.406 SPINDLE	1
6	2967-560	FLOATER WHEEL	1

2966-140-ST-FW LEFT HAND SHARK TOOTH WHEEL ASSEMBLY



ITEM	PART NO.	DESCRIPTION	QTY
1	2502-220	5/16-18 X 3/4 HHFS GR5 ZP	4
2	2502-221	5/16-18 X 1 HHFS GR5 ZP	4
3	2515-562	13" WHEEL COVER, BLACK	2
4	2571-286	SHARKTOOTH WHEEL, 8 BOLT	1
5	2965-500	HUB ASSEMBLY, 1.406 SPINDLE	1
6	2967-560	FLOATER WHEEL	1



A Tradition of Solutions since 1930

Yetter Farm Equipment Co

PO BOX 358 109 S. McDonough

Colchester, IL 62326-0358

Phone: 309-776-4111

Toll Free: 800-447-5777

Email: info@yetterco.com

For updated models and manuals visit the Yetter website:

www.yetterco.com

© Yetter Farm Equipment Co. All Rights Reserved

2565-759_REV_H • 07/2021