



2960 SERIES II

UNIT MOUNTED CONSERVATION COULTER

2565-630_REV_E • 03/2025

YETTER MANUFACTURING CO.

FOUNDED 1930

Colchester, IL 62326-0358

Toll free: 800/447-5777

309/776-3222 (Fax)

Website: www.yetterco.com

E-mail: info@yetterco.com

YETTER


FOREWORD


You've just joined an exclusive but rapidly growing club.
For our part, we want to welcome you to the group and thank you for buying a Yetter product.


We hope your new Yetter products will help you achieve both goals-increase your productivity and increase your efficiency so that you may generate more profit.


This operator's manual has been designed into four major sections: Foreword, Safety Precautions, Installation Instructions and Parts Breakdown.

This **SAFETY ALERT SYMBOL** indicates important safety messages in the manual. When you see this symbol, be alert to the possibility of **PERSONAL INJURY** and carefully read the message that follows.

 **DANGER:** Indicates an imminently hazardous situation which, if not avoided "will" result in death or serious injury. This signal word is to be limited to the most extreme situations

 **WARNING:** Indicates a potentially hazardous situation which, if not avoided, "could" result in death or serious injury.

 **CAUTION:** Indicates a potentially hazardous situation, which if not avoided, "may" result in minor or moderate injury. It may also be used to alert against unsafe practices.

 **NOTICE:** Indicates information considered important, but not hazard related (e.g., messages relating to property damage).

It is the responsibility of the user to read the operator's manual and comply with the safe and correct operating procedure and to lubricate and maintain the product according to the maintenance schedule in the operator's manual.

The user is responsible for inspecting his machine and for having parts repaired or replaced when continued use of the product would cause damage or excessive wear to the other parts.

It is the user's responsibility to deliver his machine to the Yetter dealer who sold him the product for service or replacement of defective parts, which are covered by the warranty policy.

If you are unable to understand or follow the instructions provided in this publication, consult your local Yetter dealer or contact:

YETTER MANUFACTURING CO.

309/776-4111

800/447-5777

309/776-3222 (FAX)

Website: www.yetterco.com

E-mail: info@yetterco.com

WARRANTY POLICY

Yetter Manufacturing warrants all products manufactured and sold by it against defects in material. This warranty being expressly limited to replacement at the factory of such parts or products as will appear to be defective after inspection. This warranty does not obligate the Company to bear cost of labor in replacement of parts. It is the policy of the company to make improvements without incurring obligations to add them to any unit already sold. No warranty is made or authorized to be made, other than herein set forth. This warranty is in effect for one year after purchase.

Dealer : _____

Yetter Manufacturing warrants its own products only and cannot be responsible for damage to equipment on which mounted.



SAFETY PRECAUTIONS



A brief description of signal words that may be used in this manual:

DANGER: Indicates an imminently hazardous situation which, if not avoided “will” result in death or serious injury. This signal word is to be limited to the most extreme situations.

WARNING: Indicates a potentially hazardous situation which, if not avoided, “could” result in death or serious injury.

CAUTION: Indicates a potentially hazardous situation, which if not avoided, “may” result in minor or moderate injury. It may also be used to alert against unsafe practices.

NOTICE: Indicates information considered important, but not hazard related (e.g., messages relating to property damage).

Consult your implement and tractor operator’s manual for correct and safe operating practices. Be aware of towed implement width and allow safe clearance.

Safety decals are placed on the implement to alert the operator and others to the risk of personal injury or unsafe operation during normal operations and servicing.

1. The safety decals must be kept clean and in good condition to ensure that they are legible.
2. Safety decals must be replaced if they are missing or illegible.
3. When components are replaced during repair or servicing, check that the new components include the necessary safety signs.
4. Replacement safety decals may be obtained from your local dealer.



WARNING

Read these instructions carefully to acquaint yourself with the Equipment. Working with unfamiliar equipment can lead to accidents.

Never park the equipment on a steep incline or leave the equipment running unattended.

Never clean, lubricate or adjust a machine that is in motion.

Always check that straps are secure.

Make sure latches are in pinned position when moving equipment.

Do not allow children to operate this equipment.

Do not allow riders on the equipment, trailer and/or pick-up.

Use speed and caution dictated by the terrain being traversed. Do not operate on any slope steep enough to cause tipping or loss of control.

Read and understand the operator’s manual and require all other persons who will operate the equipment to do the same.

If operating on public roadways, where legal, be certain all lighting is operating properly and observe all traffic laws.

Beware of increased stopping distances and control effort when operating with implements attached.

Be familiar with all controls and be prepared to stop equipment quickly in an emergency.

FAILURE TO HEED MAY RESULT IN PERSONAL INJURY OR DEATH.

OPERATION PRECAUTIONS

STOP

Read this before using the Yetter product.

- MACHINE OPERATION



NOTICE: failure to properly set the planter frame height and levelness can result in less than successful operation of the planter and the Yetter product and may result in damaged equipment. All operators should read and thoroughly understand the instructions given prior to using the Yetter product.

DO NOT use this product if the planter is not adjusted properly!

Leveling the planter:

With the planter lowered to proper operating height (**Usually 20"-22"**).

Read the planter operator's manual for recommended setting. Check to be sure the toolbar and row unit parallel arms are level fore and aft. **Re-check** when the planter is in the **field** and has been **fully loaded** with seed, fertilizer, granular chemicals, etc. Also, a field check with a bubble level on the frame should be made of the hitch height to ensure level operation front to back.

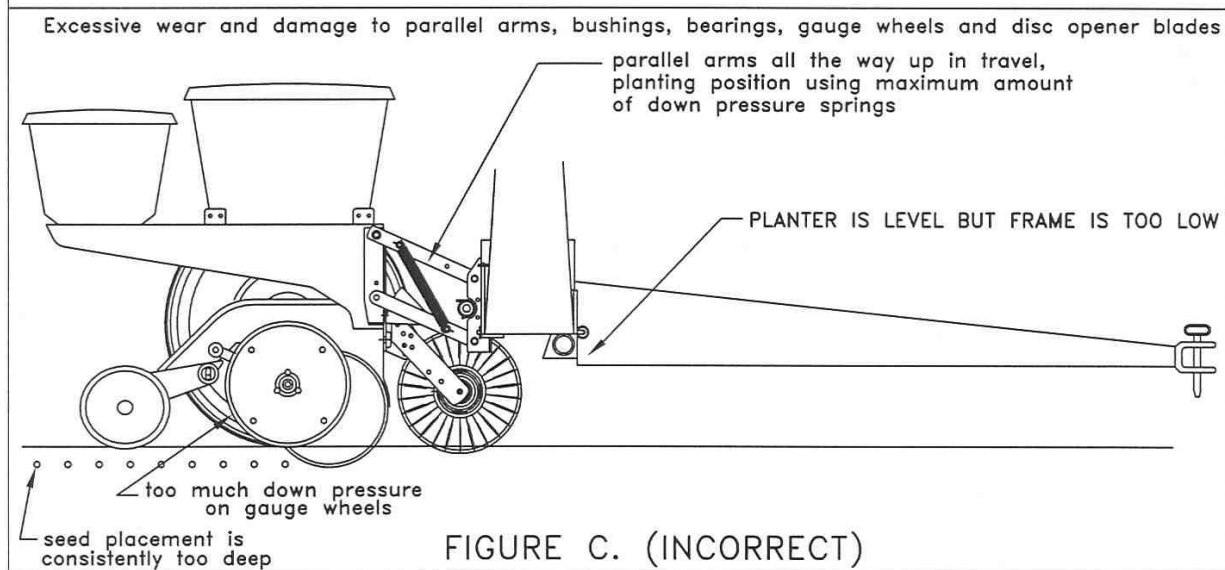
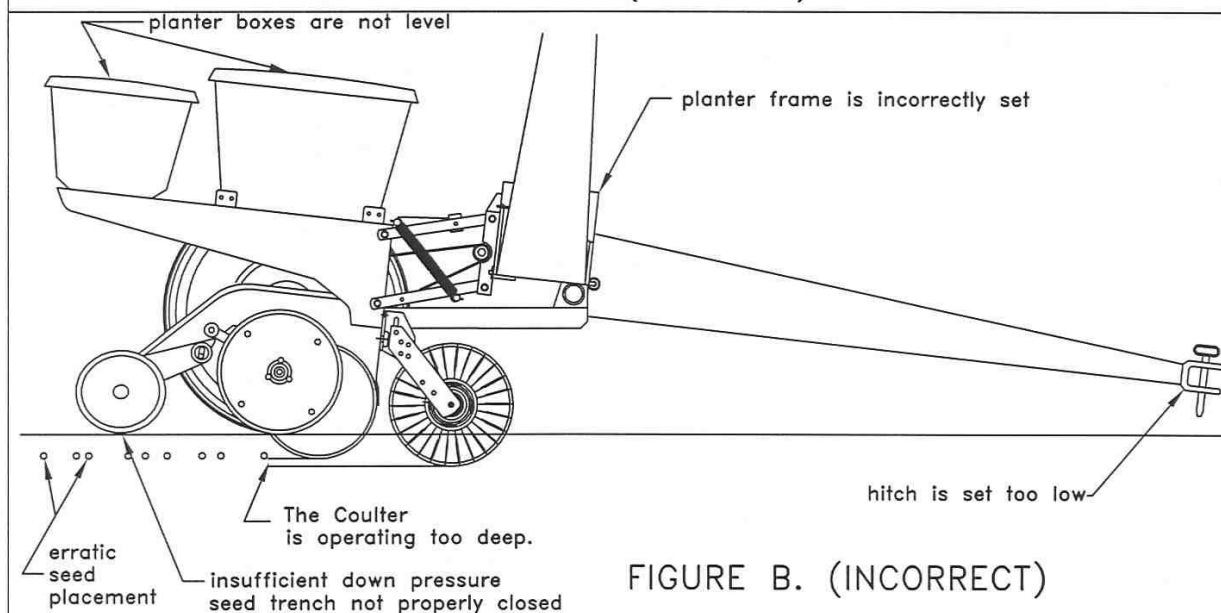
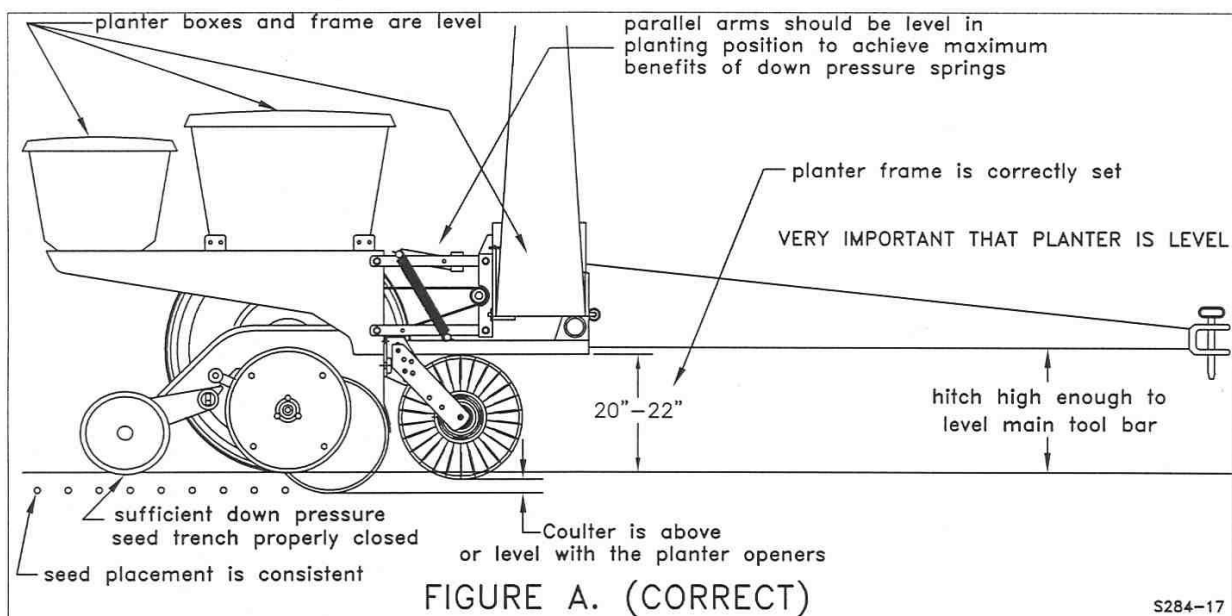
It is important for the planter to operate level laterally. Tire pressure must be maintained at pressures specified by the manufacturer.

Field and actual planting conditions change and will dictate planter frame heights. You must ensure that the row unit parallel arms are approximately parallel with the ground.



NOTICE: For proper operation of the planter attachments and row units, it is imperative that the planter toolbars and row unit parallel arms be level side-to-side and front-to-rear. The toolbar frame should operate at a 20"-22" height from the **planting surface**. Check the manufacturer's operator's manual for instructions on how to adjust the frame height and levelness.

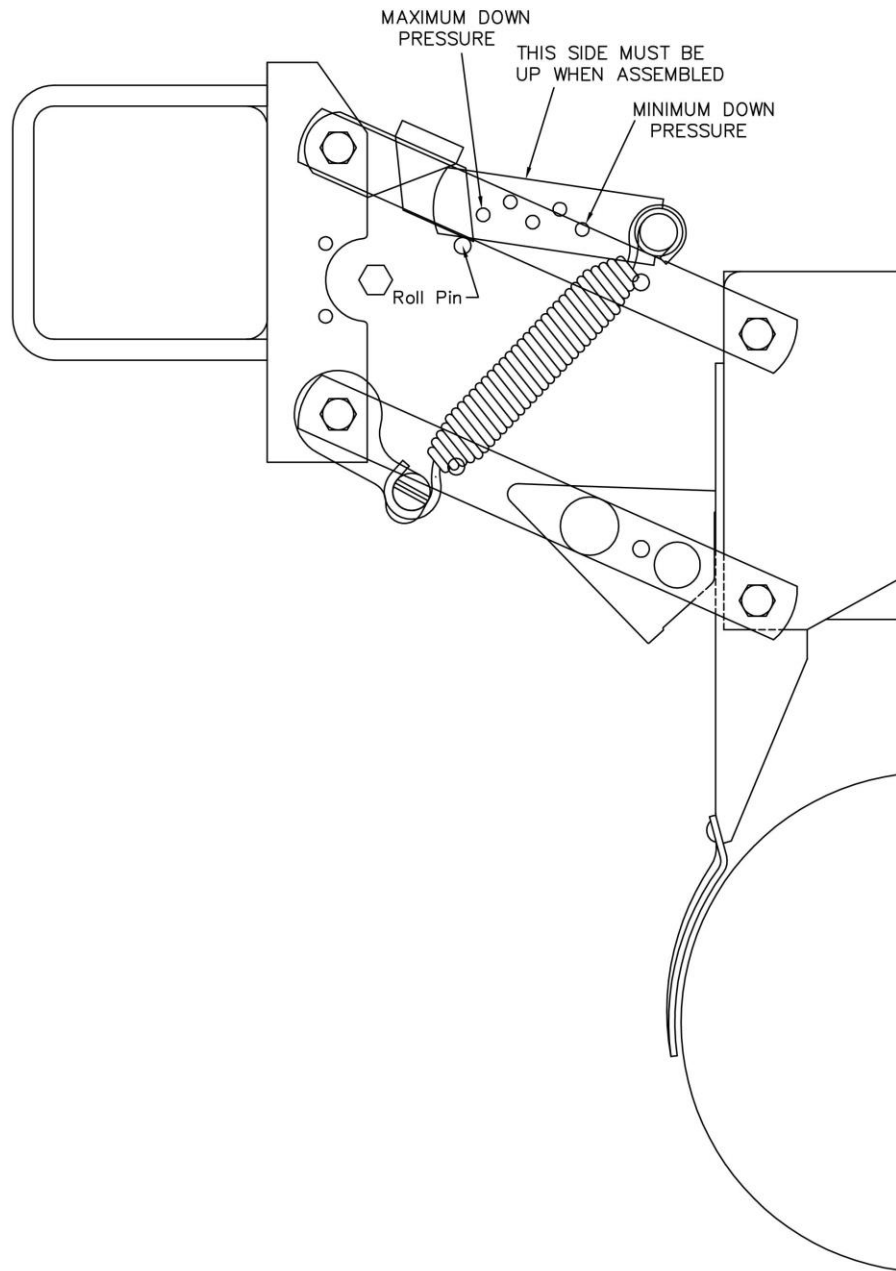
PLANTER ADJUSTMENT



INTRODUCTION

The 2960 Series II Unit Mounted Conservation Coulter has been designed as a 'universal' fitment for several makes of planter units.

By using two different arrangements of the same parts, the one boxed unit will fit several planters. One arrangement will fit the John Deere MaxEmerge 2 and plus type planters. Another arrangement of the same part will fit the old style 7000 John Deere units and Kinze units; and the coulter only will fit the 9000 Series New Idea and White 6100 units. The coulter is available separately as 2960-127, the spring kit is available separately as 2960-126 or the coulter and spring kit can be ordered as a kit 2960-015. Various different styles and sizes of blades are available to suit particular field conditions, see page 8.



S95

HEAVY DUTY COULTER INSTALLATION



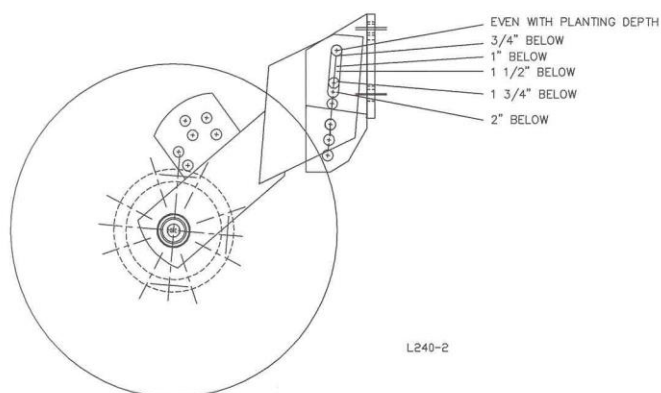
NOTICE: Mounting hardware included in 2960-122 bolt bag.

1. Mount the universal unit coultter bracket to planter breast plate using three $\frac{1}{2}$ " x $1\frac{1}{2}$ " bolts, washers and locknuts. Use the $\frac{1}{4}$ " thick washer on the lower large slot, do not tighten fully yet.

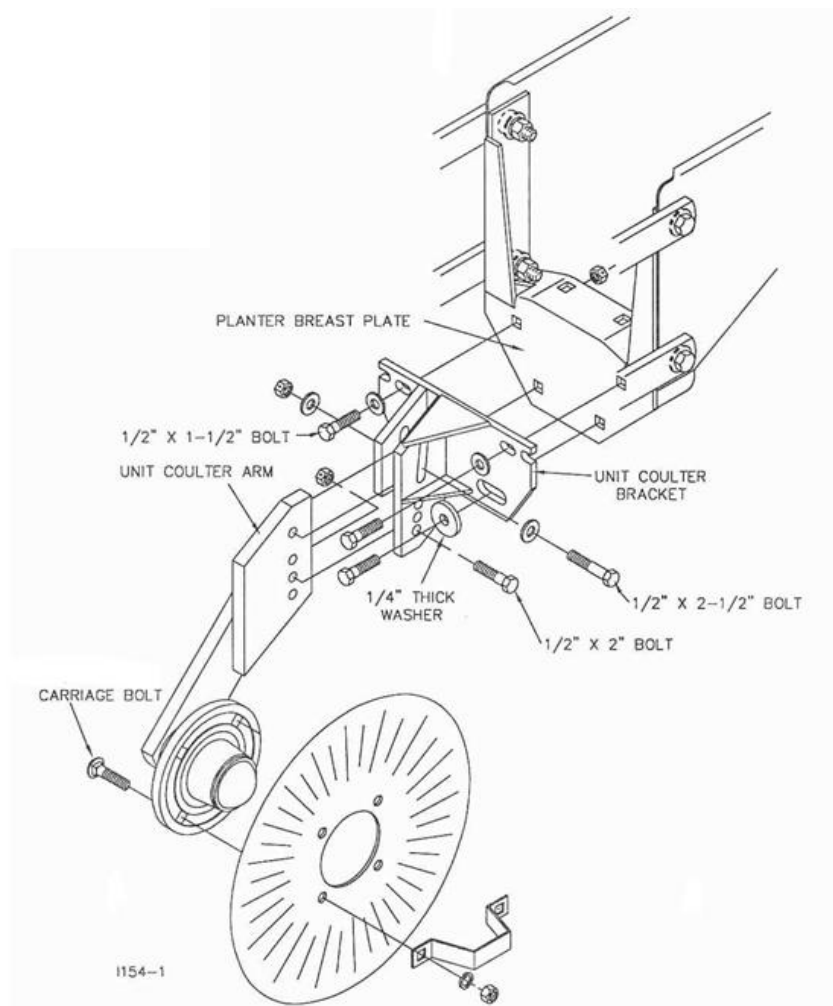


NOTICE: The $\frac{9}{16}$ " dia. round hole is not used on this application, disregard this hole.

2. Mount unit coultter arm to unit coultter bracket using $\frac{1}{2}$ " x $2\frac{1}{2}$ " bolt, flat washers and locknut through slots in bracket and upper hole in the arm and $\frac{1}{2}$ " x 2" bolt and locknut through desired lower holes of bracket and arm.
3. Install blade on hub using four $\frac{1}{2}$ " x $1\frac{1}{2}$ " carriage bolts, lock washers and nuts.
4. Align coultter blade with opener blades by sliding bracket on breast plate, then tighten the bolts securing the bracket to the planter unit.
5. Adjust coultter depth as required. **Please note that the minimum depth setting of this coultter on the Deere 7200 and 1700 series planters is even with the opener discs.** As the blade wears, the coultter may be adjusted to compensate.



L240-2



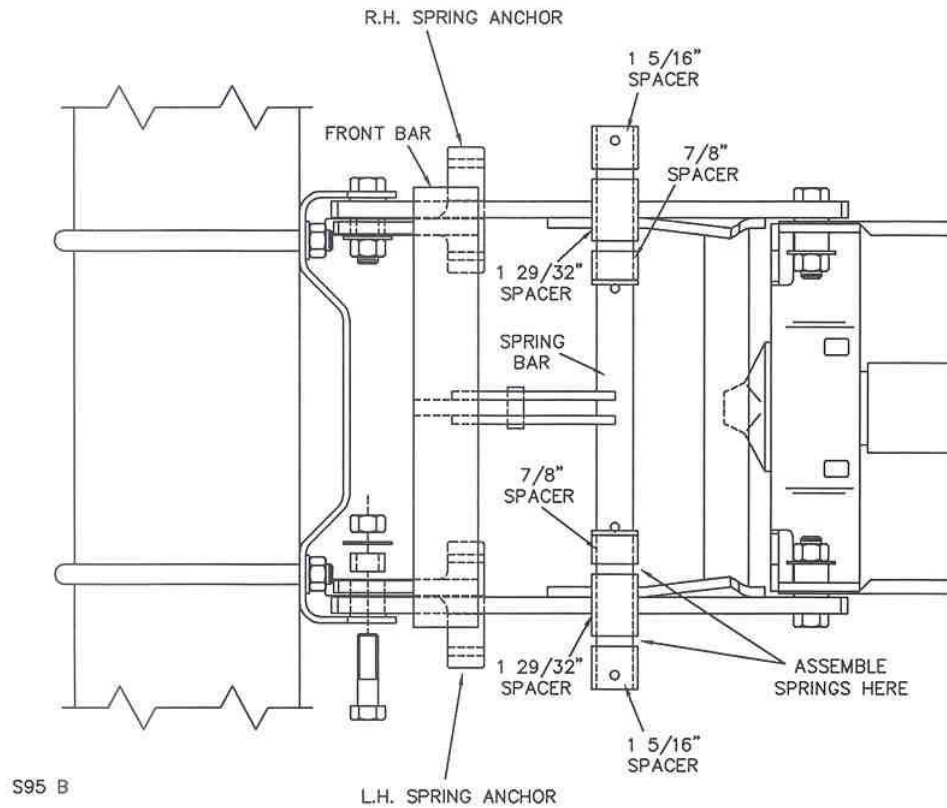
I154-1

DOWN PRESSURE SPRING INSTALLATION FOR JOHN DEERE 7000/7200/1700

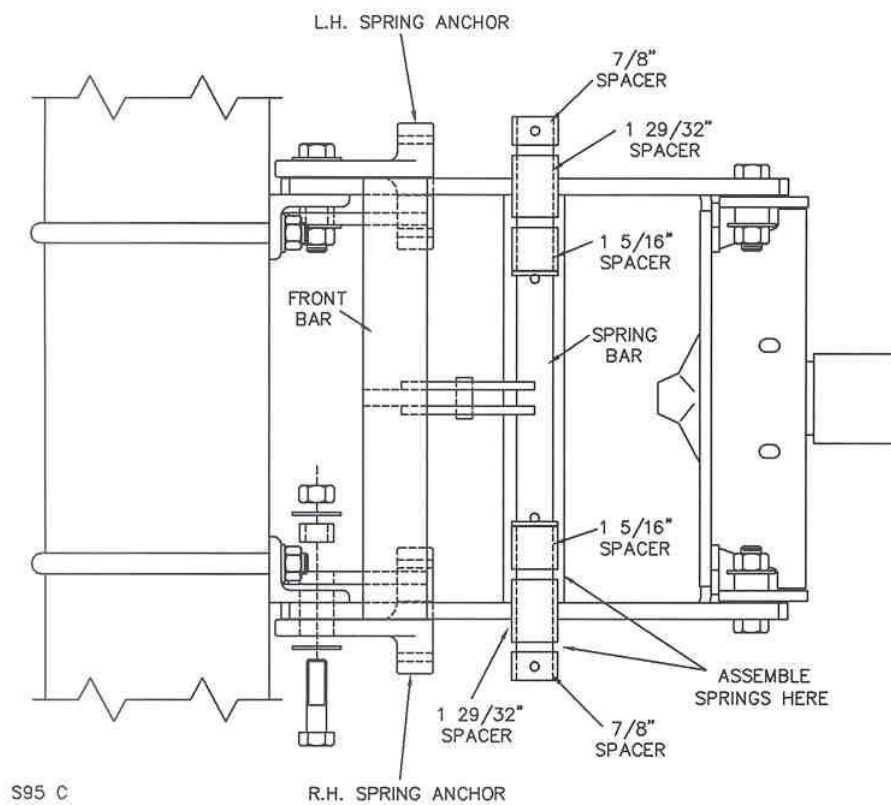


NOTICE: Mounting hardware included in 2960-123 bolt bag.

1. Remove the front lower parallel link pivot bolts and spacers. **Do not discard the spacers, as they must be re-used.** Install spring anchor castings to the front lower pivot of the parallel link using new longer bolts and spacers as shown. On John Deere 7000 the short stubs on the castings mount to the outside and the castings mount on the outside of the parallel links, most other planters IE: Yetter & Kinze also assemble as 7000. On John Deere 7200 and 1700 series the short stubs on the castings mount to the inside and the castings mount on the inside of the parallel links.'
2. Remove the front upper parallel link pivot bolts and spacers and install front bar to the upper front of the parallel link using new longer bolts and spacers provided, **along with the existing spacers just disassembled.**
3. Assemble springs and spacers to spring bar as shown in the appropriate drawing and secure with cotter pins.
4. Lower this assembly onto the parallel links with the two middle adjustment holes on the spring bar facing up as shown. This allows maximum down pressure adjustment.
5. Assemble spring bar over the guide pin on the front bar and secure the ends of the springs to the spring anchors using $\frac{1}{4}$ " x 2" roll pins. It will be necessary to have planter units in transport position to install springs, or adjust tension.
6. Insert spring adjustment pin in the desired hole on the spring bar and secure with $\frac{1}{8}$ " hairpin cotter.
7. Assemble the spring stops to the upper parallel arms with the $\frac{1}{2}$ " x 2" bolts and locknuts provided. The spring stops must be assembled on the 'inside' of the arms and the heads must be towards the middle of each row unit. The spring stops are to be assembled to the rear 'spare' hole in the upper parallel arms and will prevent the springs from sliding back too far.
8. Refer to 'Troubleshooting' page if necessary.

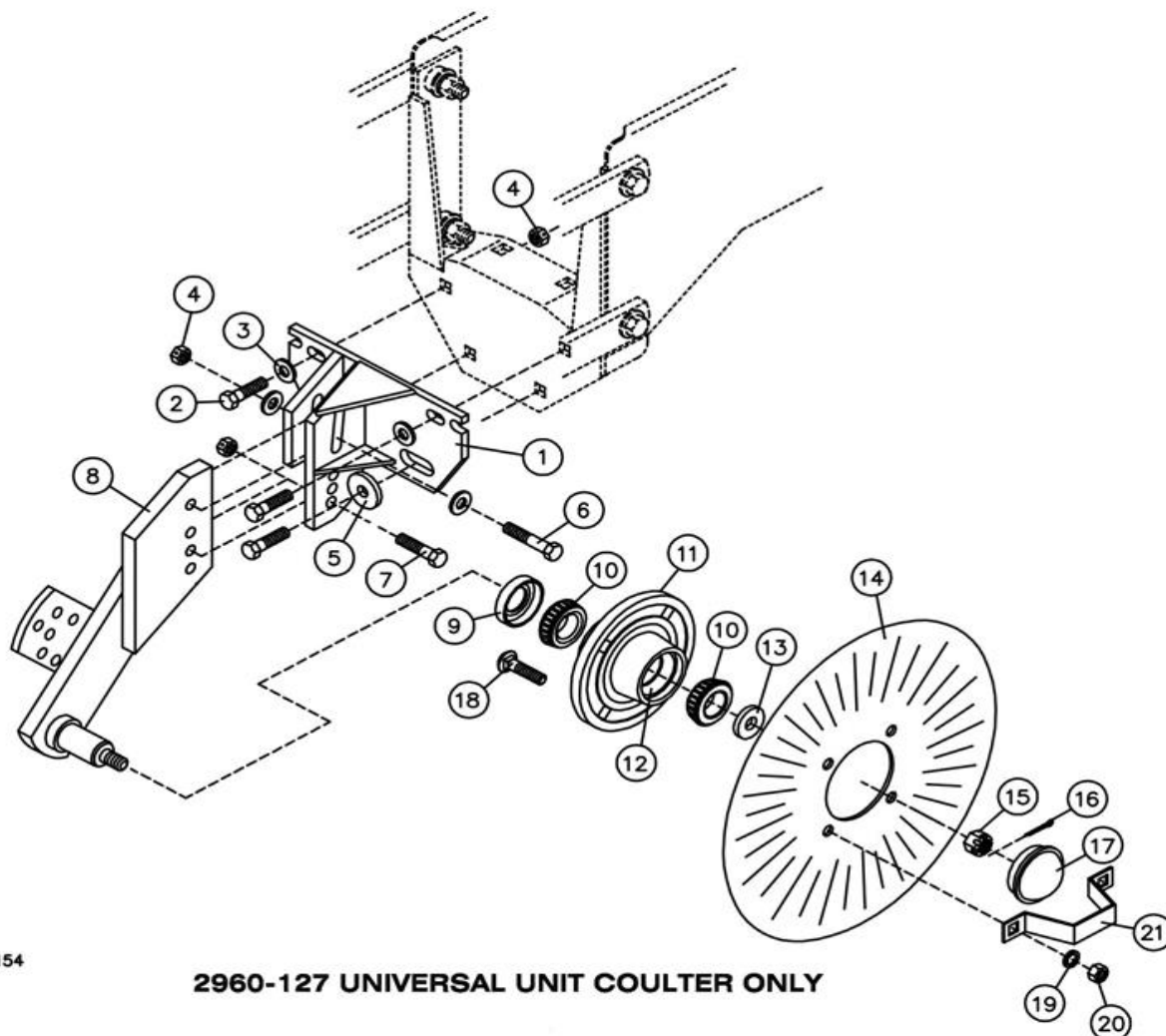


PARTS ARRANGEMENT FOR J.D. 7200 & 1700 SERIES



PARTS ARRANGEMENT FOR J.D. 7000

PARTS IDENTIFICATION



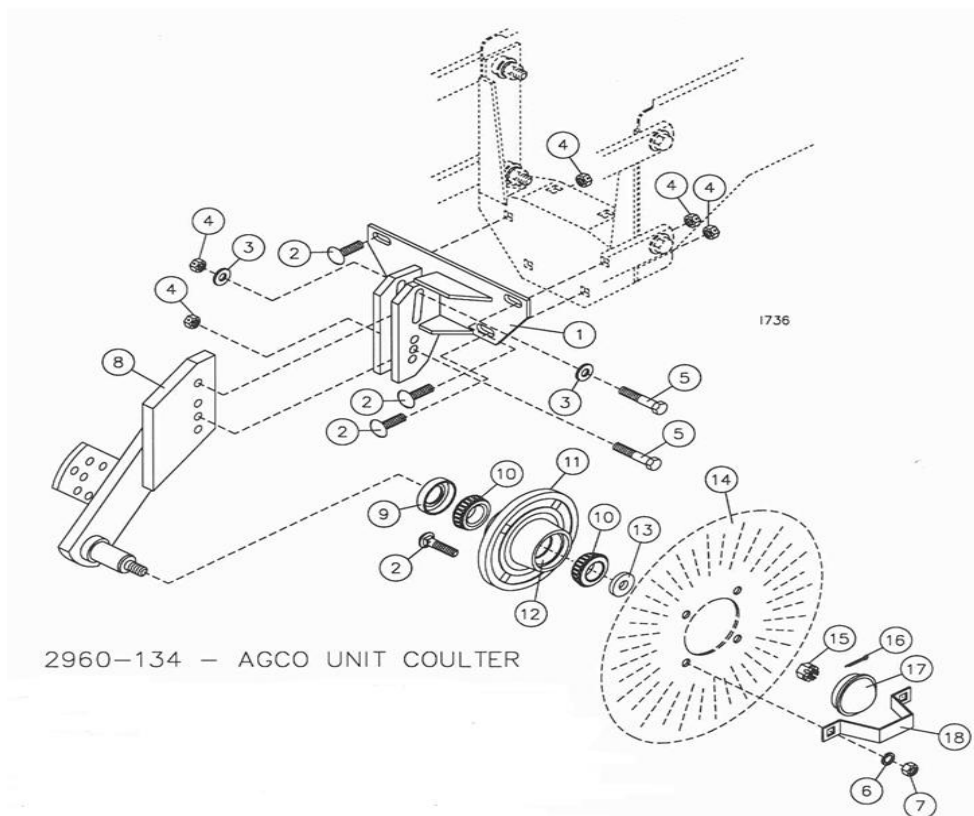
1154

2960-127 UNIVERSAL UNIT COULTER ONLY

ITEM	PART #	DESCRIPTION	QTY.
1	2960-219	COULTER BRACKET	1
2	2502-294	1/2-13 X 1-1/2 CAP SCREW GRADE5	3
3	2526-355	1/2 FLATWASHER HARDENED	4
4	2520-357	1/2-13 LOCK HEX NUT	5
5	2526-402	9/16 ID X 1-3/4 OD X 1/4 THICK WASHER	1
6	2502-296	1/2-13 X 2-1/2 CAP SCREW GRADE 5	1
7	2502-351	1/2-13 X 2 CAP SCREW GRADE 5	1
8	2960-218	COULTER ARM	1
	2900-108	SPINDLE	1
	2960-116	COULTER ASSEMBLY WITH HUB	1
9	2550-066	SEAL	1
10	2550-027	CONE LM67048	2
11	2900-102	HUB ASSEMBLY	1
12	2550-029	CUP LM67010	2
13	2526-449	5/8 FLAT WASHER 11/16 ID X 1-3/4 OD X 1/4	1
14	2571-153	16" BUBBLE COULTER	1
	2571-156	16" 8 WAVE COULTER	1
	2571-161	16" RIPPLE COULTER	1
	2571-162	16" 13 WAVE COULTER	1
	2571-172	16" 25 WAVE COULTER	1
	2571-206	16" SMOOTH COULTER	1
15	2520-469	5/8-18 SLOTTED HEX NUT	1
16	2531-102	1/8 X 1-1/4 COTTER PIN	1
17	2570-375	HUB CAP	1
18	2505-339	1/2-13 X 1-1/2 CARRIAGE BOLT GRADE 5	4
19	2525-352	1/2 LOCKWASHER	4
20	2520-352	1/2-13 HEX NUT	4
21	2987-301	HUB CAP RETAINER	1

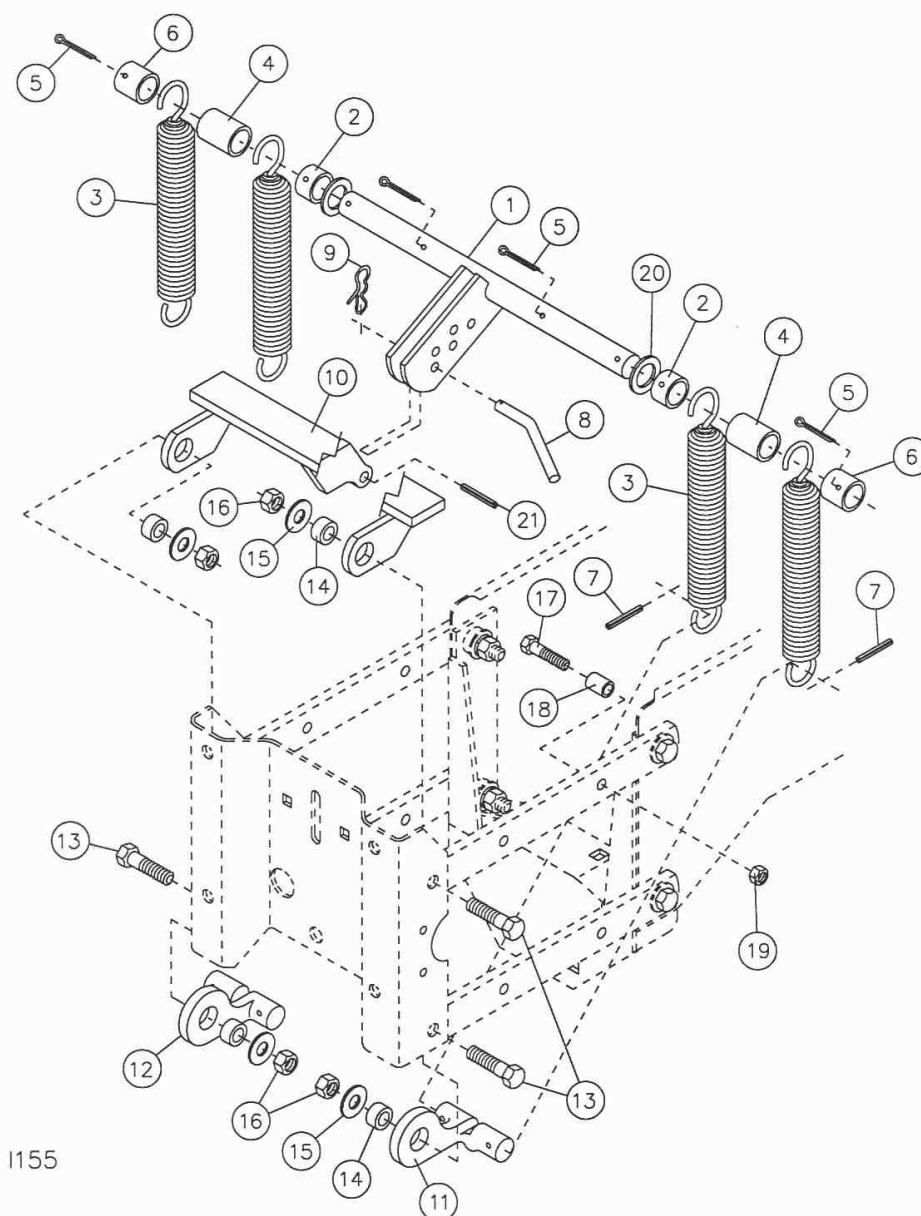
PARTS IDENTIFICATION

2960-134



ITEM	PART #	DESCRIPTION	QTY
1	2960-226	AGCO 8000 COULTER BRACKET	1
2	2505-339	1/2-13 X 1-1/2 CARRIAGE BOLT GRADE 5	7
3	2526-355	1/2" FLATWASHER HARDENED	2
4	2520-357	1/2-13 HEX LOCK NUT	5
5	2502-296	1/2-13 X 2-1/2" CAP SCREW GRADE 5	2
6	2525-352	1/2 LOCKWASHER	4
7	2520-352	1/2-13 HEX NUT	4
8	2960-218	COULTER ARM	1
	2900-108	SPINDLE	1
9	2550-066	SEAL	1
10	2550-027	CONE LM67048	2
11	2900-102	HUB ASSEMBLY	1
12	2550-029	CUP LM67010	2
13	2526-449	5/8" FLATWASHER 1/4" THICK	1
14	2571-153	16" BUBBLE COULTER	1
	2571-156	16" 8 WAVE COULTER	1
	2571-161	16" RIPLE COULTER	1
	2571-162	16" 13 WAVE COULTER	1
	2571-172	16" 25 WAVE COULTER	1
	2571-206	16" SMOOTH COULTER	1
15	2520-469	5/8-18 SLOTTED HEX NUT	1
16	2531-102	1/8 X 1-1/4 COTTER PIN	1
17	2570-375	HUB CAP	1
18	2987-301	HUB CAP RETAINER	1

PARTS IDENTIFICATION



I155

2960-126 UNIVERSAL SPRING KIT ONLY

KEY	QTY.	PART NO.	DESCRIPTION
1	1	2960-227	SPRING BAR W.A (6/02)
2	2	2960-353	SPACER, 7/8" ZP.
3	4	2960-373	EXT. SPRING, 1 5/8 O.D. X .26 WIRE
4	2	2960-352	SPACER, 1 29/32" ZP.
5	4	2531-125	1/4 X 1 3/4" COTTER PIN ZP.
6	2	2960-351	SPACER, 1 5/16" ZP.
7	4	2530-153	1/4 X 2" ROLL PIN ZP.
8	1	2960-359	SPRING ADJUSTMENT PIN, ZP.
9	1	2570-448	1/8" BOWTIE LOCKING COTTER ZYD.
10	1	2960-221	FRONT BAR W.A.
11	1	2960-361	SPRING ANCHOR, L.H.
12	1	2960-360	SPRING ANCHOR, R.H.
13	4	2502-393	5/8-11 X 2 1/2" HHCS GR.5 ZP.
14	4	2960-354	PIVOT SPACER, 9/16" ZP.
15	4	2526-451	5/8 STD. FLATWASHER ZP.
16	4	2520-459	5/8-11 LOCK HEX NUT ZP.
17	2	2502-351	1/2-13 X 2 HHCS GR.5 ZP
18	2	2960-372	SPRING STOP, ZP
19	2	2520-357	1/2-13 LOCK HEX NUT ZP
20	2	2527-557	1-1/8ID X 1-3/4OD X 10GA MA BU
21	1	2530-219	1/2 X 2 ROLL PIN, BLACK

UPDATED 05-16-08

TROUBLESHOOTING

Problem	Cause	Solution
Cannot adjust coulter depth shallow enough.	Planter frame not set correctly.	Ensure that in operation the planter frame is at correct height (20"-22") and level the toolbar, refer to opposite page.
Cannot adjust coulter deep enough.	Coulter blade worn too small.	Replace coulter blade.
Coulter will not penetrate.	Lack of spring tension.	Increase spring tension.
Coulter penetrates too much.	Excessive spring down pressure.	Reduce spring tension.
Seed placement is too deep.	Coulter blade set too deep relative to openers.	Shallow up coulter depth.
Optional wavy blade disturbs too much soil.	Soil too damp or loose.	Reduce ground speed.
Drive chain rubs on springs.	Close fitting parts.	Not detrimental to operation of planter.
No spring tension.	Planter frame not set correctly.	Check planter frame settings, see above.
	Spring adjustment pin not installed properly	Check installation of pin.

NOTES

NOTES

Our name Is getting known

Just a few years ago, Yetter products were sold primarily to the Midwest only. Then we embarked on a program of expansion and moved into the East, the South, the West and now north into Canada. We're even getting orders from as far away as Australia and Africa.

So, when you buy Yetter products . . .you're buying a name that's recognized. A name that's known and respected. A name that's become a part of American agriculture and has become synonymous with quality and satisfaction in the field of conservation tillage.

Thank you.

YETTER MANUFACTURING CO.

Colchester, IL 62326-0358 ☎ 309/776-4111

Toll Free 800/447-5777

Fax 309/776-3222

Website: www.yetterco.com

E-mail: info@yetterco.com