



ALL STEER
MODEL 2000
HIGH CAPACITY CART
OPERATOR'S MANUAL
PART IDENTIFICATION

2565-726_REV_E 12/23



YETTER MANUFACTURING CO.
FOUNDED 1930

Colchester, IL 62326-0358
Toll free: 800/447-5777
309/776-3222 (Fax)
Website: www.yetterco.com
E-mail: info@yetterco.com

YETTER


FOREWORD

You've just joined an exclusive but rapidly growing club.

For our part, we want to welcome you to the group and thank you for buying a Yetter product.

We hope your new Yetter products will help you achieve both goals-increase your productivity and increase your efficiency so that you may generate more profit.

This operator's manual has been designed into four major sections: Foreword, Safety Precautions, Installation Instructions and Parts Breakdown.

 This **SAFETY ALERT SYMBOL** indicates important safety messages in the manual. When you see this symbol, be alert to the possibility of **PERSONAL INJURY** and carefully read the message that follows.

The word **NOTE** is used to convey information that is out of context with the manual text. It contains special information such as specifications, techniques and reference information of a supplementary nature.

The word **IMPORTANT** is used in the text when immediate damage will occur to the machine due

to improper technique or operation. Important will apply to the same information as specified by note only of an immediate and urgent nature.

It is the responsibility of the user to read the operator's manual and comply with the safe and correct operating procedure and to lubricate and maintain the product according to the maintenance schedule in the operator's manual.

The user is responsible for inspecting his machine and for having parts repaired or replaced when continued use of the product would cause damage or excessive wear to the other parts.

It is the user's responsibility to deliver his machine to the Yetter dealer who sold him the product for service or replacement of defective parts, which are covered by the warranty policy.

If you are unable to understand or follow the instructions provided in this publication, consult your local Yetter dealer or contact:

YETTER MANUFACTURING CO.

309/776-4111

800/447-5777

309/776-3222 (FAX)

Website: www.yetterco.com

E-mail: info@yetterco.com

WARRANTY

Yetter Manufacturing warrants all products manufactured and sold by it against defects in material. This warranty being expressly limited to replacement at the factory of such parts or products as shall appear to be defective after inspection. This warranty does not obligate the Company to bear cost of labor in replacement of parts. It is the policy of the Company to make improvements without incurring obligations to add them to any unit already sold. No warranty is made or authorized to be made, other than herein set forth. This warranty is in effect for one year after purchase.

Dealer _____

Yetter Manufacturing warrants its own products only and cannot be responsible for damages to equipment on which mounted.

SAFETY PRECAUTIONS

You can make your farm a safer place to live and work if you observe the safety precautions given. Study these precautions carefully and insist those working with you and for you follow the precautions.

Finally, remember this an accident is usually caused by someone's carelessness, neglect or oversight.

A brief description of signal words that may be used in this manual:

CAUTION: Used as a general reminder of good safety practices or to direct attention to unsafe practices.

WARNING: Denotes a specific potential hazard.

DANGER: Denotes the most serious specific potential hazard.



CAUTION

Consult your implement and tractor operator's manual for correct and safe operating practices. Be aware of towed implement width and allow safe clearance.



CAUTION: SAFETY SIGNS

Safety decals are placed on the implement to alert the operator and others to the risk of personal injury or unsafe operation during normal operations and servicing.

1. The safety decals must be kept clean and in good condition to ensure that they are legible.
2. Safety decals must be replaced if they are missing or illegible.
3. When components are replaced during repair or servicing, check that the new components include the necessary safety signs.
4. Replacement safety decals may be obtained from your local dealer.



WARNING

Read these instructions carefully to acquaint yourself with the Equipment. Working with unfamiliar equipment can lead to accidents.

Never park the equipment on a steep incline or leave the equipment running unattended.

Never clean, lubricate or adjust a machine that is in motion.

Always check that straps are secure.

Make sure latches are in pinned position when moving equipment.

Do not allow children to operate this equipment.

Do not allow riders on the equipment, trailer and/or pick-up.

Use speed and caution dictated by the terrain being traversed. Do not operate on any slope steep enough to cause tipping or loss of control.

Read and understand the operator's manual and require all other persons who will operate the equipment to do the same.

If operating on public roadways, where legal, be certain all lighting is operating properly and observe all traffic laws.

Beware of increased stopping distances and control effort when operating with implements attached.

Be familiar with all controls and be prepared to stop equipment quickly in an emergency.

FAILURE TO HEED MAY RESULT IN PERSONAL INJURY OR DEATH.

TABLE OF CONTENTS

| | PAGE |
|---|-------|
| FORWARD/WARRANTY..... | 2 |
| SAFETY INFORMATION..... | 3 |
| TABLE OF CONTENTS..... | 4 |
| GENERAL INFORMATION/BOLT TORQUE..... | 5 |
| ASSEMBLY INSTRUCTIONS..... | 6-12 |
| OPERATING/MAINTENANCE INSTRUCTIONS..... | 13-15 |
| PARTS IDENTIFICATION..... | 16-53 |

GENERAL INFORMATION

High capacity with high clearance keeps your planter and or side-dress operation running longer, the perfect answer for bigger, faster farming operation. The name of the game is to cover more acres each day and that is exactly what the 2000 Series All Steer High Capacity Cart accomplishes. What makes the All Steer High Capacity Cart unique is its tire-tracking feature where the rear tires track the front tires at all times resulting in less compaction or less downed crops. All Steer carts are a multi-use high capacity tool for many applications such as starter fertilizer, pre-plant fertilizer, side-dressing herbicides and insecticides. Tank capacities of up to 1600 gallons stretch out the time between refills helping to eliminate non-productive down time.

Incorporating a 2000 Series All Steer High Capacity Cart into your farming operation sets the stage to capitalize on maximum yield potential. Field tests have shown the sooner the seed is planted in the optimum planting window the greater the opportunity is to maximize yield potential. In addition, research has proven yield gain can also be made with timely side dressing application of fertilizer.

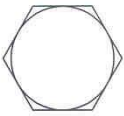
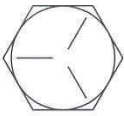

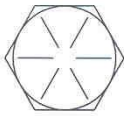
Reliability and durability are built into each All Steer for years of dependable service. 2" x 8" structured steel tubing is the foundation for the tank saddle providing for an extra strong mounting platform that evenly distributes stress loads on the tank. When it comes to carrying the load, strength is at the center of the design parameters for the All Steer High Capacity Cart. Heavy-duty 8 bolt hubs, 2 3/4" spindles, durable tires and rims are the backbone of the axle assembly. Each axle is connected to the tank saddle by a greaseable 5th wheel mechanism, which allows for steerage of both axle assemblies. In addition for a smoother ride the front axle has a unique feature of being able to pivot horizontally. Wide stance mounting lugs are welded to the front axle for mounting the telescoping pull hitch for a consistent equal pull. The telescoping hitch features speed hook-ups, which gets you up and going faster. Ground clearance is abundant, especially for side dressing. Up to a generous 27" is available depending on the tire selection.

BOLT TORQUE

READ THESE INSTRUCTIONS FIRST:

1. Improperly tightened bolts will result in damage, breakage, expense, and down time.
2. Always replace bolts with the specified grade and type.
3. Torque properly before first use of the machine and every 2-4 hours of use until you are sure bolts are staying tight.
4. The chart below is a guide for proper torque. Use it unless a specified torque is called out elsewhere in the manual.
5. Torque is the force you apply to the wrench handle or the cheater bar, times the length of the handle or bar.
6. Use a torque wrench whenever possible.

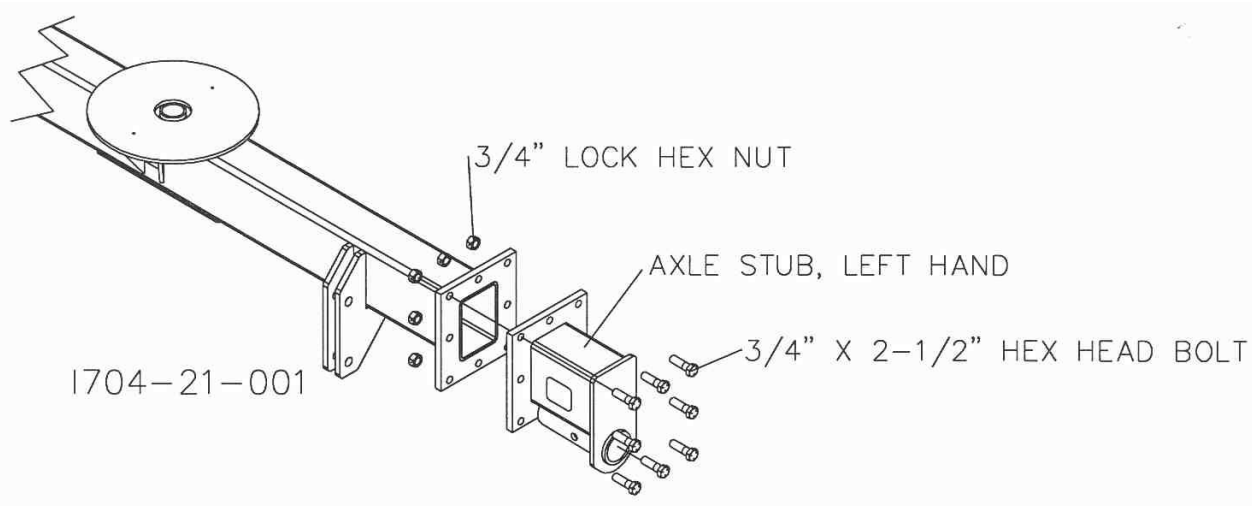
The following table shows torque in ft. lbs.

| BOLT DIA. AND THREADS PER INCH |  GRADE 2 |  OR  GRADE 5 A-325 |  GRADE 8 |
|---|---|---|---|
| 3/8-16 | 25 | 35 | 50 |
| 7/16-14 | 35 | 55 | 80 |
| 1/2-13 | 55 | 85 | 125 |
| 9/16-12 | 75 | 125 | 175 |
| 5/8-11 | 105 | 170 | 235 |
| 3/4-10 | 175 | 305 | 425 |
| 7/8-9 | 185 | 445 | 690 |
| 1-8 | 260 | 670 | 1030 |
| 1 1/8-7 | 365 | 900 | 1460 |
| 1 1/4-7 | 515 | 1275 | 2060 |
| 1 3/8-6 | 675 | 1675 | 2700 |
| 1 1/2-6 | 900 | 2150 | 3500 |
| 1 3/4-5 | 1410 | 3500 | 5600 |

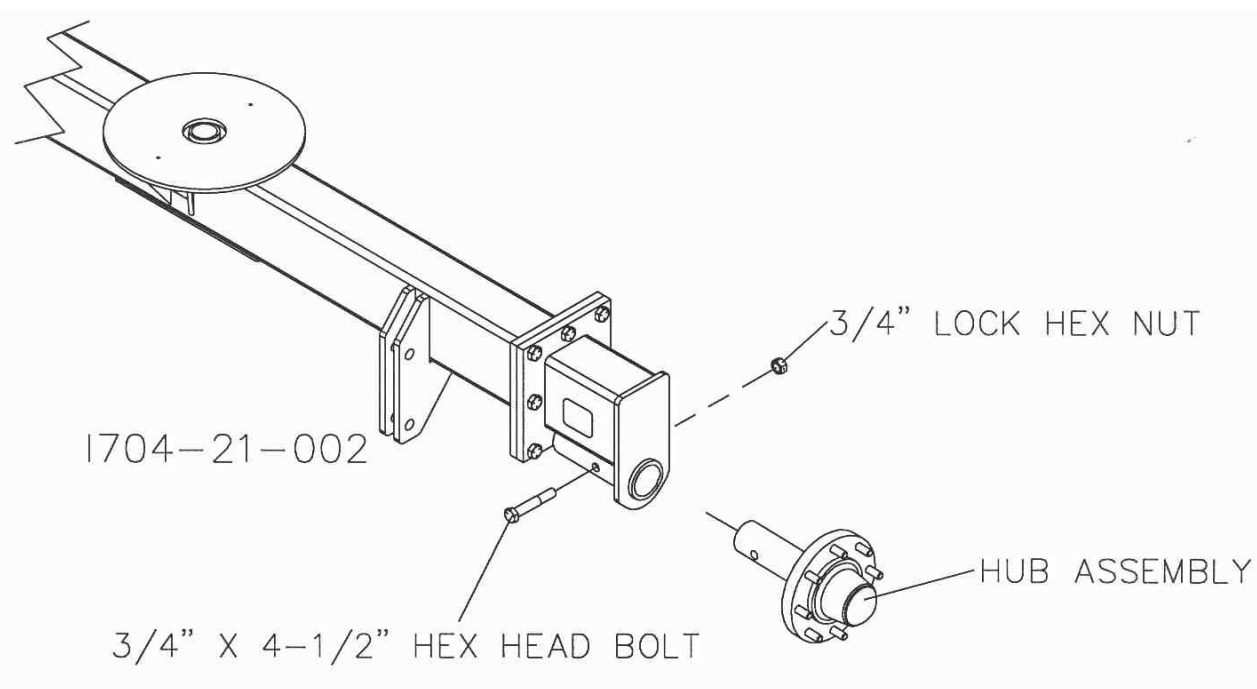
Lubricate all bearings and moving parts as assembled and make certain that they work freely.

ASSEMBLY INSTRUCTIONS

Step 1. Attach the axle stubs to the front and rear main axles using the $\frac{3}{4}$ " X 2 $\frac{1}{2}$ " hex head bolts and locknuts.



Step 2. Attach the hub/spindle assemblies to the axle stub, using the $\frac{3}{4}$ " X 4 $\frac{1}{2}$ " hex head bolts and locknuts.



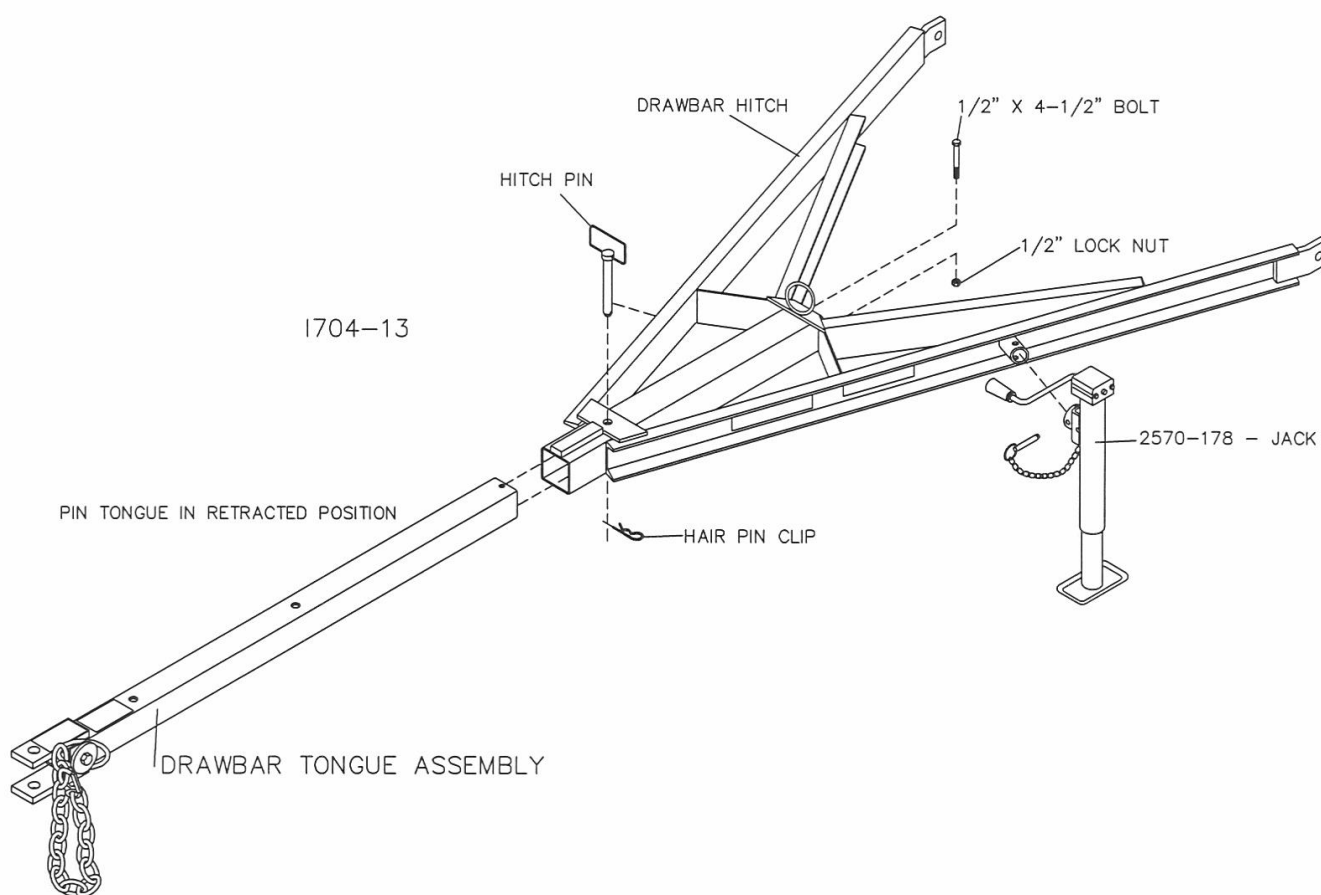
ASSEMBLY INSTRUCTIONS

Step 3. Attach the tire/wheel assemblies to the 8-bolt hubs using the wheel nuts 2520-370. Torque to 100 ft/lbs.



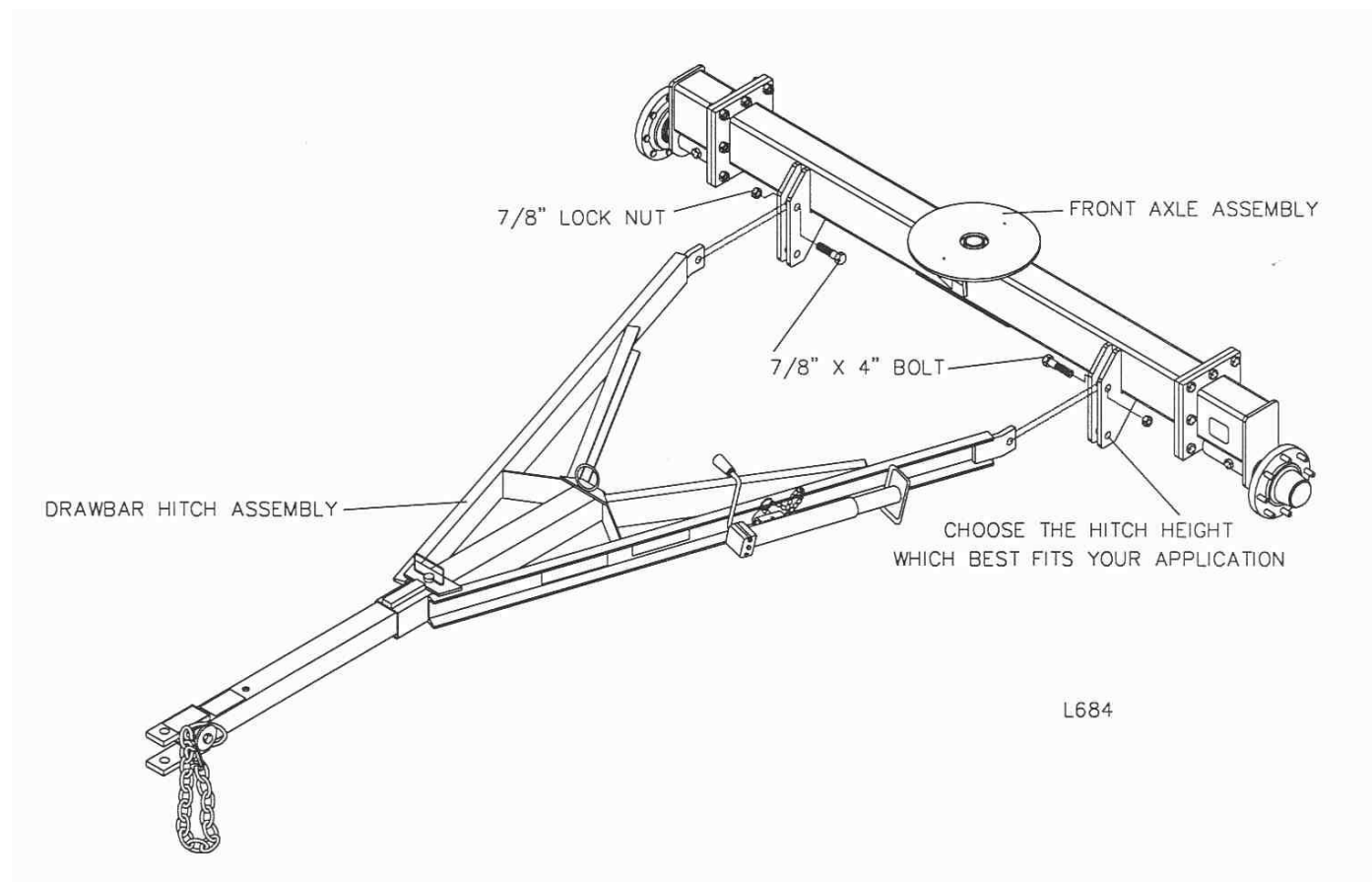
ASSEMBLY INSTRUCTIONS

Step 4. Insert the 2000-200 hitch drawbar tongue into the 2000-201 hitch receiver and install the 1/2" x 4-1/2" bolt and lock nut. Also at this time install the hitch pin and hair pin clip, pin the tongue in the retracted position. Install the 2570-178 jack onto the 2000-201 hitch receiver and secure with a pin and hair pin clip.



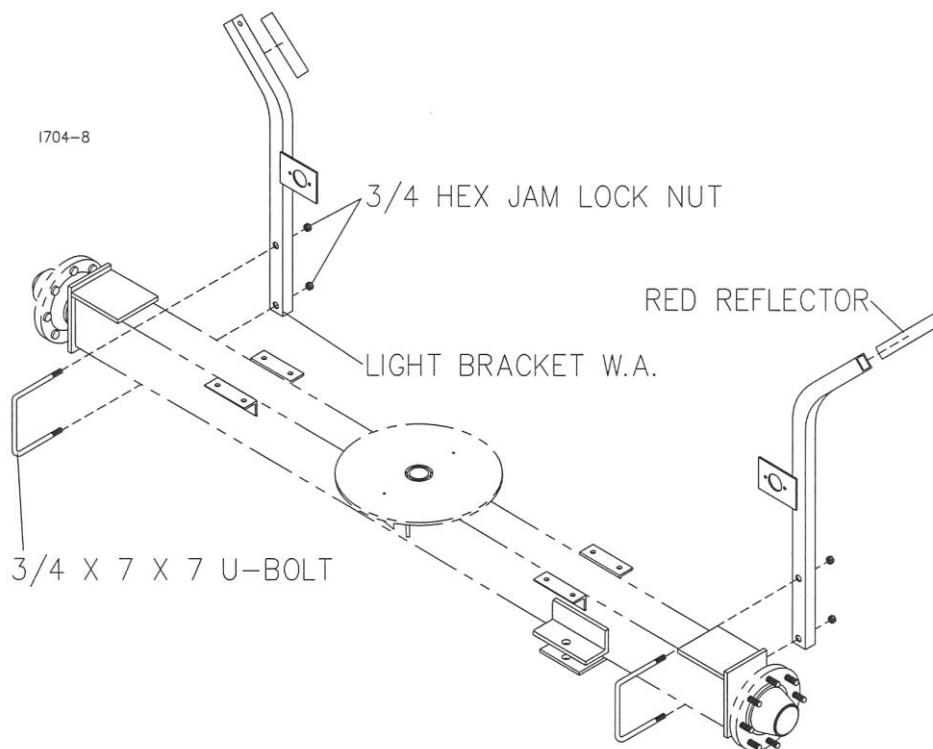
ASSEMBLY INSTRUCTIONS

Step 5. Attach the drawbar assembly to the front axle using 2) 7/8" x 4" bolts and lock nuts.

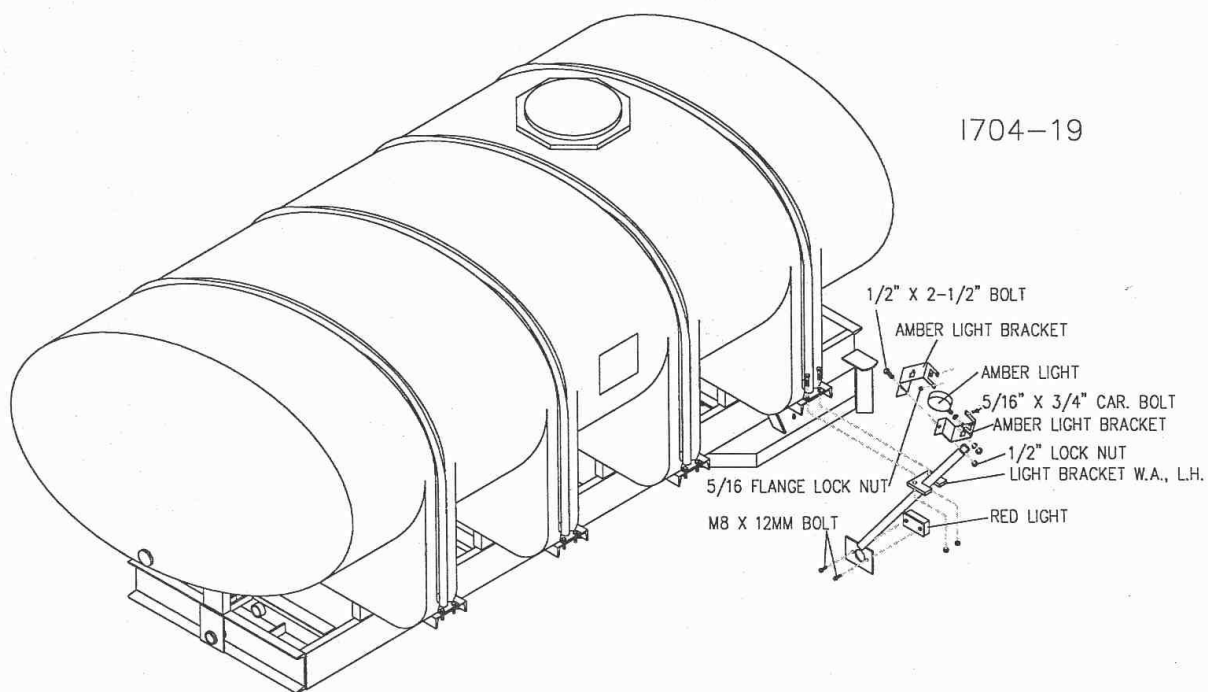


ASSEMBLY INSTRUCTIONS

Step 6A. Install light brackets to rear axle using $\frac{3}{4}$ " x 7 x 7 u-bolt, and hex nut. Also, attach the red reflectors at the top of each light bracket as shown below.



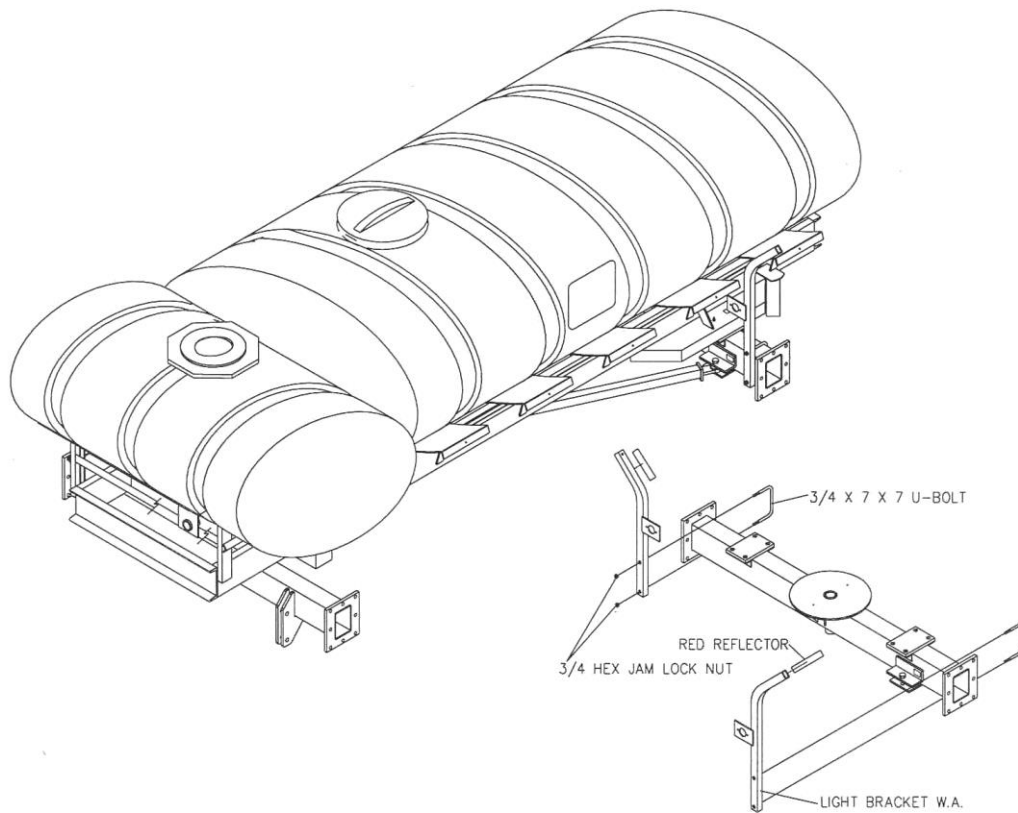
Step 6B.



2000 GALLON (1) TANK LIGHT BRACKET ASSEMBLY

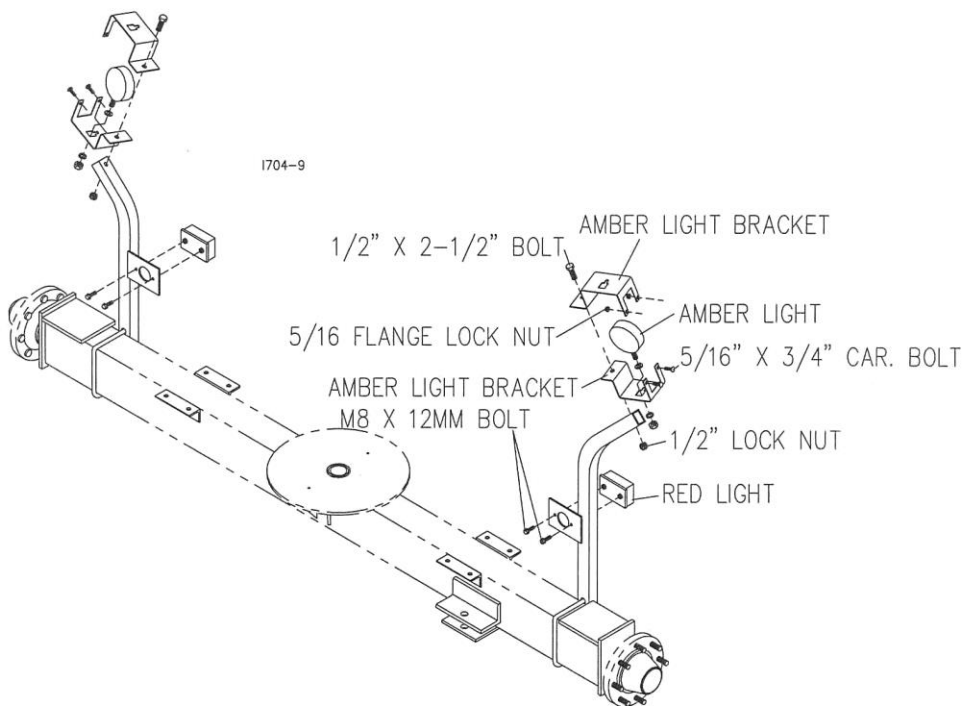
ASSEMBLY INSTRUCTIONS

Step 6C.



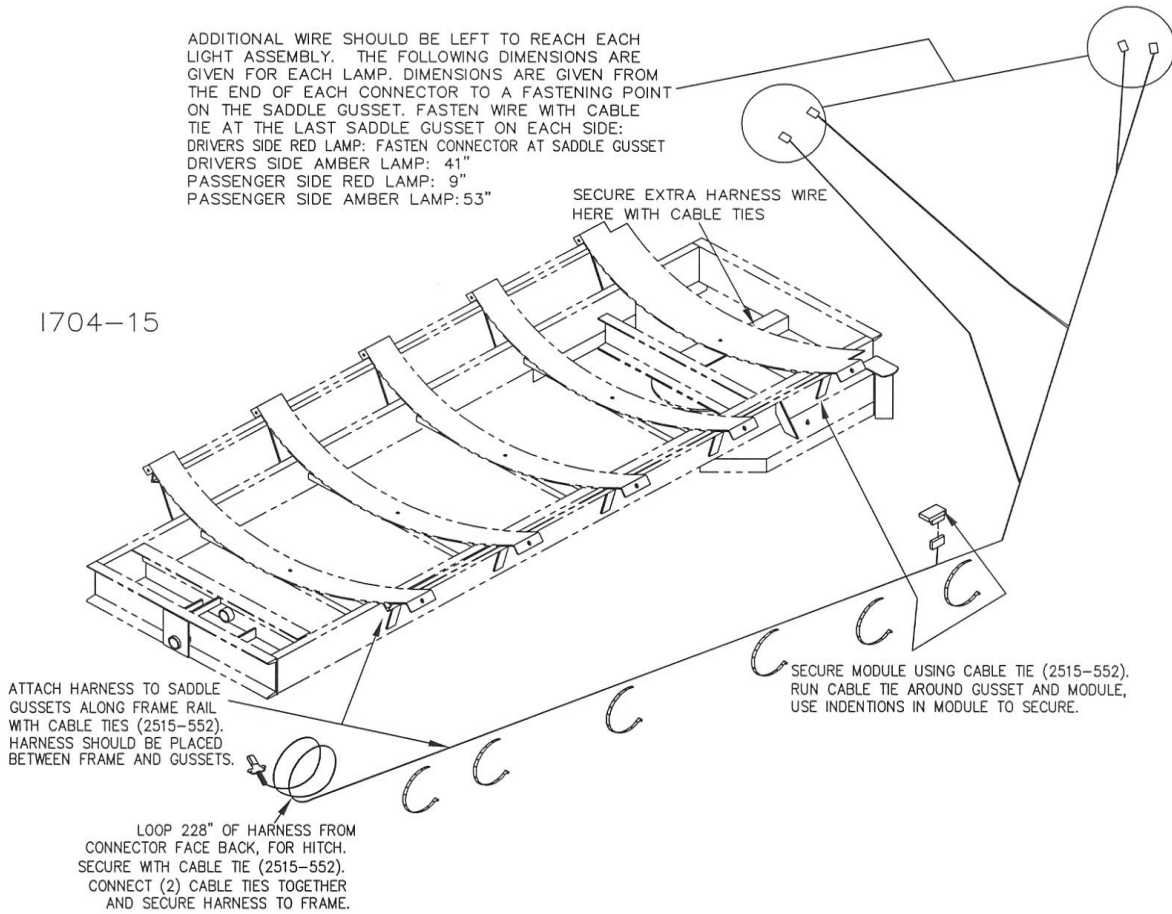
I704-22

Step 7. Install lights to light brackets using hardware listed above.



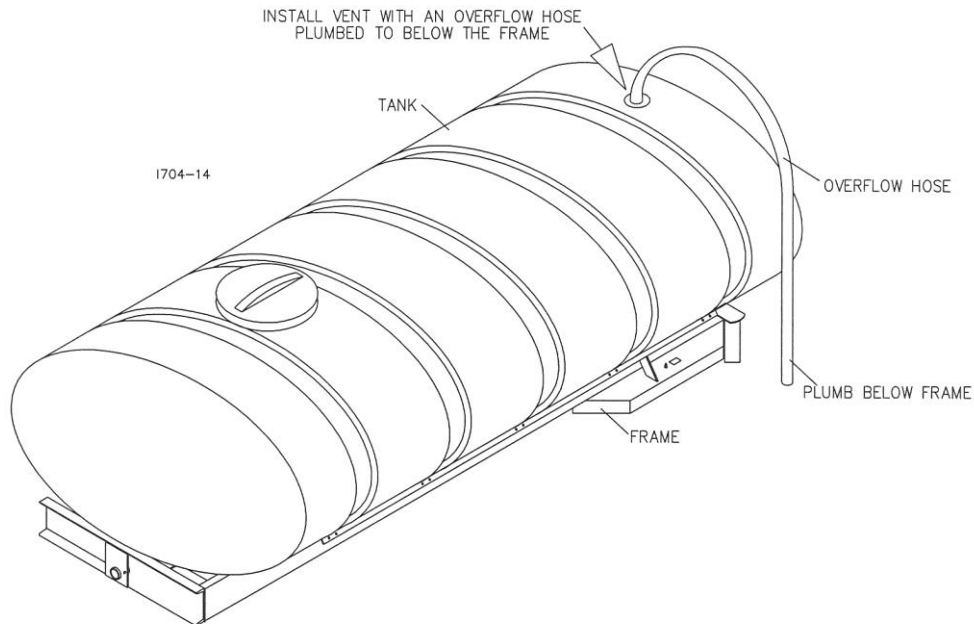
ASSEMBLY INSTRUCTIONS

Step 8. Install safety light wiring harness.



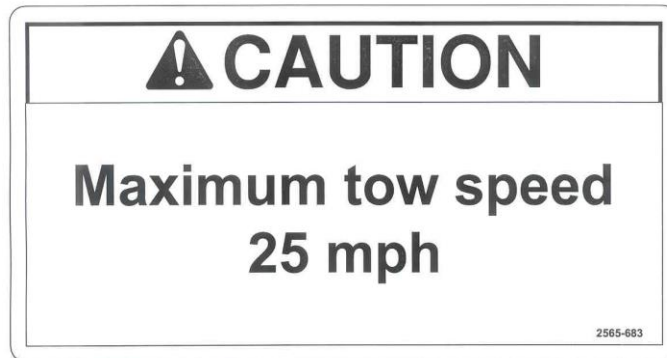
Plumbing

- No plumbing is supplied by Yetter Manufacturing Inc. Co.
- **SUGGESTION:** Install a vent and overflow hose; plumbed to below the frame, in the event that the tank is overfilled, the product will not come in contact with the metal parts of the ALL STEER cart.



OPERATION

DO NOT TOW THE ALL STEER OVER 25 MPH!



THE TOW VEHICLE NEEDS TO BE ABLE TO SAFELY HANDLE A MINIMUM OF 24,000 LBS.



Maximum carrying capacity of the ALL STEER model 2000 1600-gallon cart is 19,000 lbs.

▲ CAUTION – Check for the 2565-495 SMV decal on the poly tank; if missing or illegible it must be replaced. Also, the safety decals need to be kept clean, visible, and legible.

▲ CAUTION - Tighten nylon tie straps and replace if frayed.

▲ CAUTION - Use safety chains and safety lights.

▲ CAUTION - Check wheel nuts after ½ hour or 25 miles. Check daily.

▲ CAUTION – MAX. 25 MPH towing speed.

▲ CAUTION – Do not tow in all-steer mode on public roads.

▲ CAUTION – Unloading of the All Steer cart is to occur before off-field transport.

▲ CAUTION – Use all-steer mode for field use only.

OPERATION



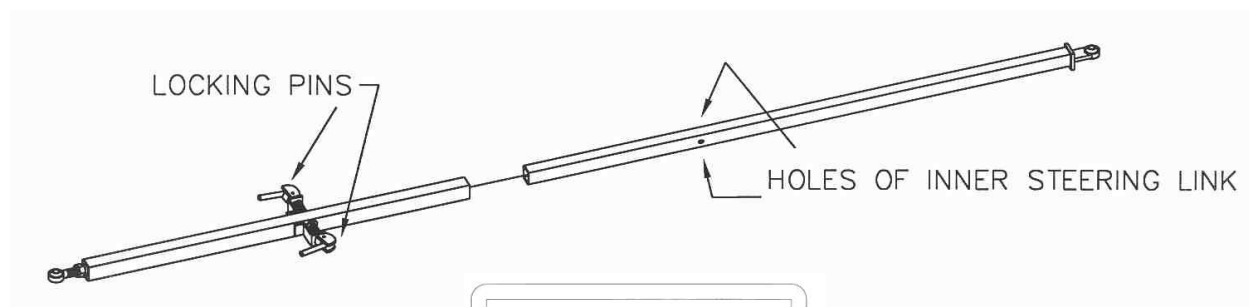
FIELD LOCATION



TRANSPORT LOCATION

BE CERTAIN THE PINS ARE ENGAGED IN THE HOLES OF THE INNER STEERING LINK, AFTER CONVERTING FROM ALL STEER (4 WHEEL) TO TRANSPORT (2 WHEEL) STEERING OR WHEN CONVERTING FROM TRANSPORT (2 WHEEL) TO ALL STEER (4 WHEEL) STEERING.

NOTE: SEVERE DAMAGE TO THE ALL STEER FERTILIZER CART OR ROLL-OVER CAN OCCUR.

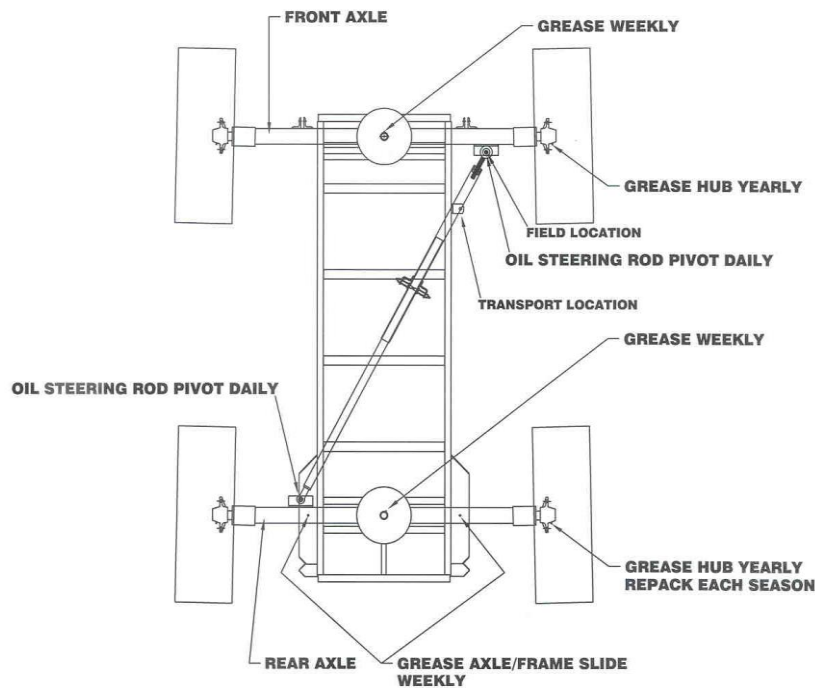


CAUTION

**Fully engage
Cam Lock
Pins to
ensure safe
transport**

2565-816

LUBRICATION



MAINTENANCE

Check hub for bearing play yearly.

Oil ball sockets to prevent corrosion, seizure and wear.

Replace all worn bolts.

Tire pressure 18.4 x 26-10 ply – Front 30 p.s.i.
- Rear 30 p.s.i.



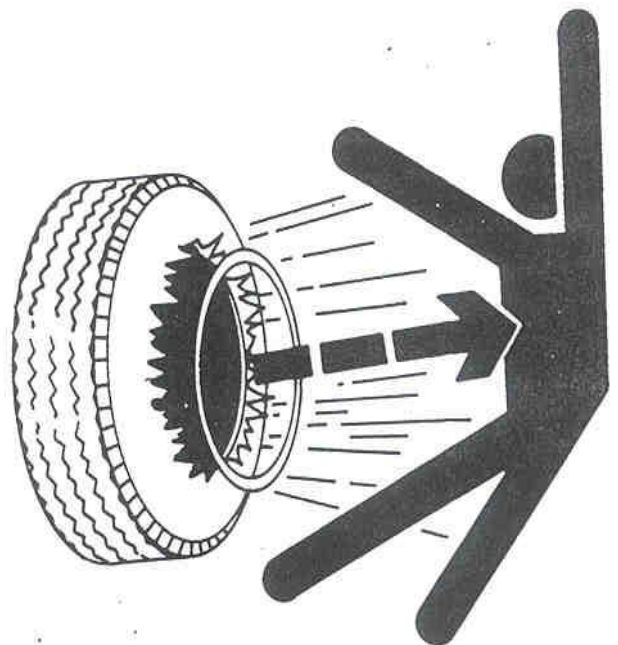
CAUTION – Explosive separation of a tire and rim parts can cause serious injury or death.

Do not attempt to mount a tire unless you have the proper equipment and experience to perform the job. Have it done by your implement dealer or a qualified repair service.

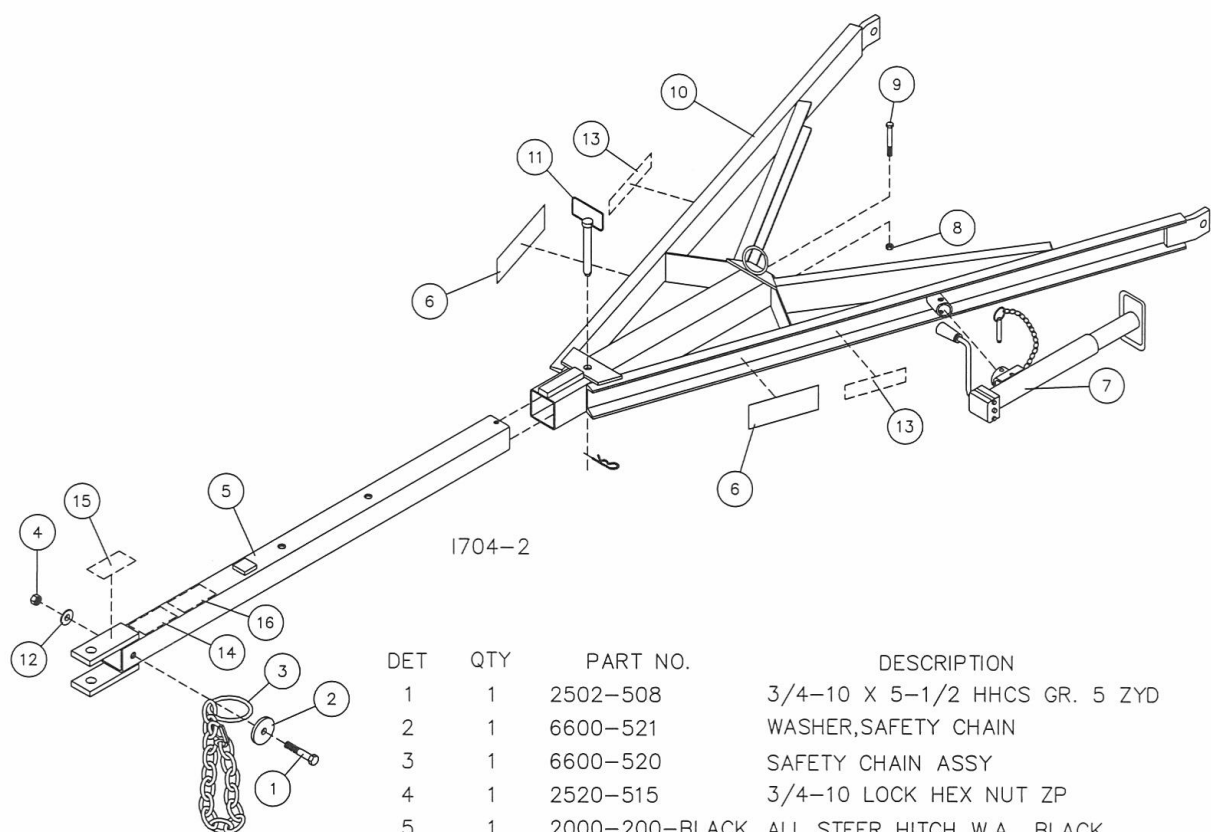
Always maintain the correct tire pressure. Do not inflate the tires above the recommended pressure.

When inflating tires, use a clip-on chuck and extension hose long enough to allow you to stand to one side and NOT in front of or over the tire assembly. Use a safety cage if available.

Inspect tires and wheels daily. Do not operate with low pressure, cuts, damaged rims or missing lug bolts and nuts.

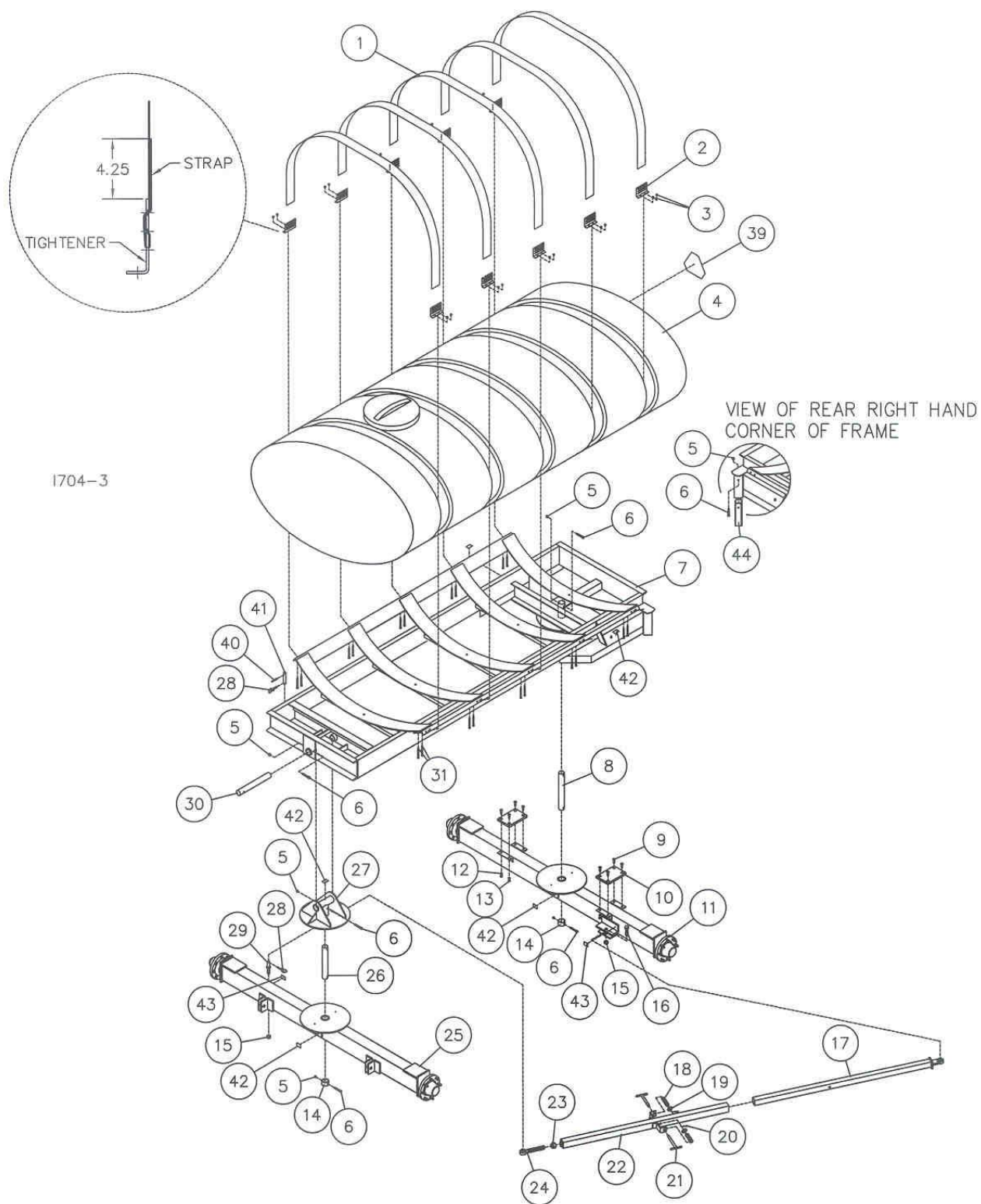


PARTS IDENTIFICATION



| DET | QTY | PART NO. | DESCRIPTION |
|-----|-----|----------------|--------------------------------|
| 1 | 1 | 2502-508 | 3/4-10 X 5-1/2 HHCS GR. 5 ZYD |
| 2 | 1 | 6600-521 | WASHER,SAFETY CHAIN |
| 3 | 1 | 6600-520 | SAFETY CHAIN ASSY |
| 4 | 1 | 2520-515 | 3/4-10 LOCK HEX NUT ZP |
| 5 | 1 | 2000-200-BLACK | ALL STEER HITCH W.A., BLACK |
| | 1 | 2000-200-BLUE | ALL STEER HITCH W.A., BLUE |
| | 1 | 2000-200-GREEN | ALL STEER HITCH W.A., GREEN |
| 6 | 2 | 2565-058 | YET FRM EQUI DE 3-7/16X10-5/16 |
| 7 | 1 | 2570-178 | JACK,H'BLOW #620214-3-SMX-15-0 |
| 8 | 1 | 2520-357 | 1/2-13 LOCK HEX NUT ZP |
| 9 | 1 | 2502-363 | 1/2-13 X 4-1/2 HHCS GR. 5 ZP |
| 10 | 1 | 2000-201-BLACK | HITCH RECEIVER W.A., BLACK |
| | 1 | 2000-201-BLUE | HITCH RECEIVER W.A., BLUE |
| | 1 | 2000-201-GREEN | HITCH RECEIVER W.A., GREEN |
| 11 | 1 | 2000-101 | HITCH PIN ASS'Y |
| 12 | 1 | 2526-501 | 3/4 STANDARD FLATWASHER ZP |
| 13 | 2 | 2565-813 | AMBER REFLECTOR |
| 14 | 1 | 2565-683 | TOWING SPEED DECAL |
| 15 | 1 | 2565-684 | 'HITCH CAPACITY' DECAL |
| 16 | 1 | 2565-472 | ALL STEER TRANSPORT WARN DECAL |

PARTS IDENTIFICATION



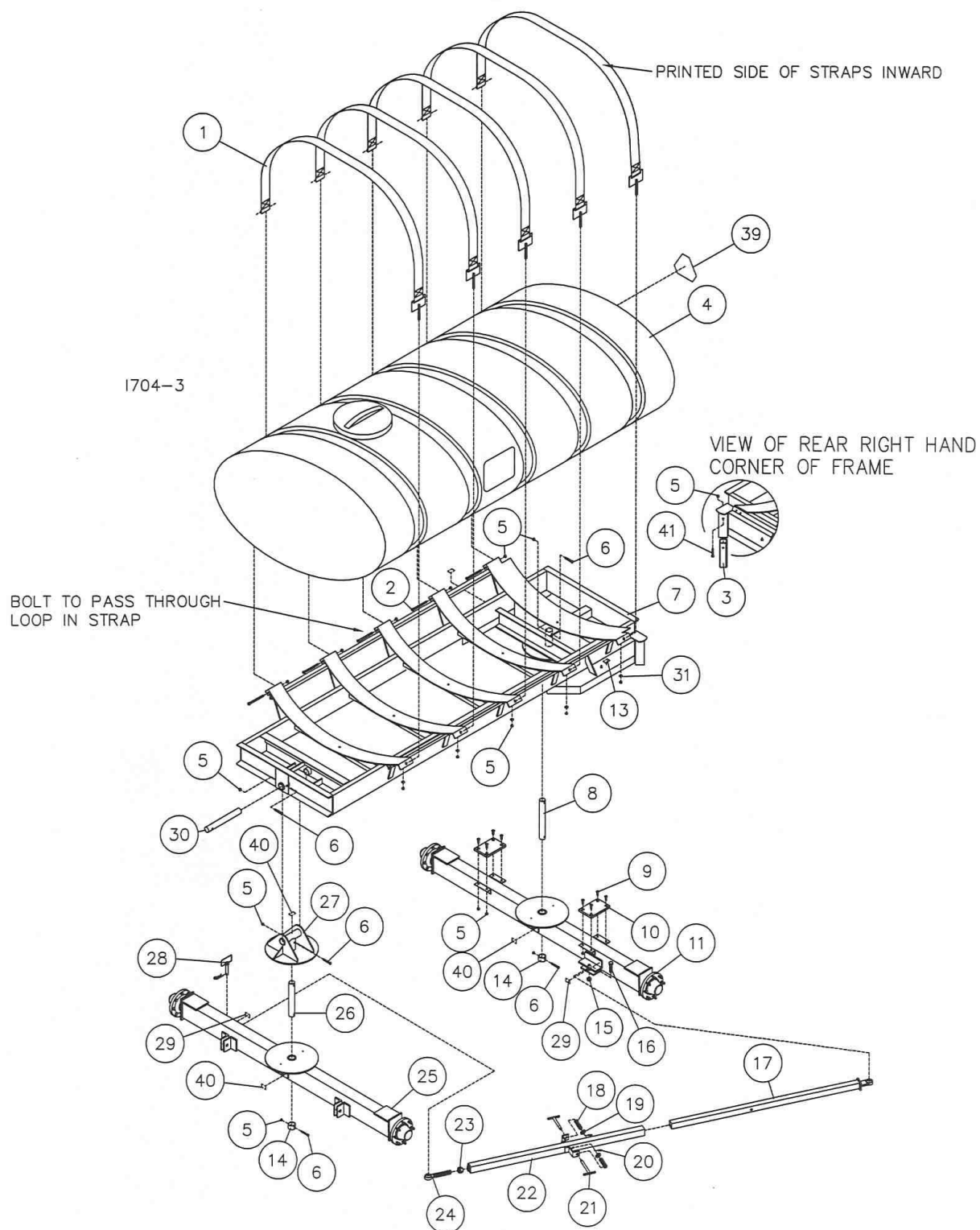
MANUFACTURED 3-04 TO 6-04

PARTS IDENTIFICATION

| DET | QTY | PART NO. | DESCRIPTION |
|-----|-----|----------------|--------------------------------|
| 1 | 5 | 2000-315 | 4" X 138" NYLON STRAP |
| 2 | 10 | 2000-316 | TANK STRAP TIGHTENER |
| 3 | 20 | 2520-259 | 3/8-16 LOCK HEX NUT SS |
| 4 | 1 | 2515-700 | 1600 GAL. POLY TANK, WHITE |
| | 1 | 2515-699 | 1600 GAL. POLY TANK, YELLOW |
| 5 | 5 | 2520-357 | 1/2-13 LOCK HEX NUT ZP |
| 6 | 5 | 2502-313 | 1/2-13 X 3 HHCS GR. 5 ZP |
| 7 | 1 | 2000-203-BLACK | ALL STEER FRAME W.A., BLACK |
| | 1 | 2000-203-BLUE | ALL STEER FRAME W.A., BLUE |
| | 1 | 2000-203-GREEN | ALL STEER FRAME W.A., GREEN |
| 8 | 1 | 2000-317 | REAR PIVOT PIN ZYD. |
| 9 | 8 | 2503-352 | 1/2-13 X 1 1/2 FHS HCS ZP |
| 10 | 2 | 2000-318 | POLY WEAR PAD |
| 11 | 1 | 2000-104-BLACK | REAR AXLE ASSEMBLY, BLACK |
| | 1 | 2000-104-BLUE | REAR AXLE ASSEMBLY, BLUE |
| | 1 | 2000-104-GREEN | REAR AXLE ASSEMBLY, GREEN |
| 12 | 8 | 2525-352 | 1/2 MED LOCKWASHER ZP |
| 13 | 8 | 2520-352 | 1/2-13 HEX NUT ZP |
| 14 | 2 | 2000-319-BLACK | PIVOT COLLAR, BLACK |
| | 2 | 2000-319-BLUE | PIVOT COLLAR, BLUE |
| | 2 | 2000-319-GREEN | PIVOT COLLAR, GREEN |
| 15 | 2 | 2520-540 | 7/8-9 LOCK HEX NUT ZP |
| 16 | 1 | 2502-606 | 7/8-9 X 3 HHCS GR5 ZP |
| 17 | 1 | 2000-204-BLACK | INNER LINKAGE W.A., BLACK |
| | 1 | 2000-204-BLUE | INNER LINKAGE W.A., BLUE |
| | 1 | 2000-204-GREEN | INNER LINKAGE W.A., GREEN |
| 18 | 2 | 2550-761 | THROW OUT CLUTCH SPRING, BLACK |
| 19 | 2 | 2526-501 | 3/4 STANDARD FLATWASHER ZP |
| 20 | 2 | 2530-153 | 1/4 X 2 ROLL PIN ZP |
| 21 | 2 | 2000-205 | LOCK PIN W.A. ZYD. |
| 22 | 1 | 2000-206-BLACK | OUTER TUBE W.A., BLACK |
| | 1 | 2000-206-BLUE | OUTER TUBE W.A., BLUE |
| | 1 | 2000-206-GREEN | OUTER TUBE W.A., GREEN |
| 23 | 1 | 2520-573 | 1 1/4-7 JAM NUT ZP. |
| 24 | 1 | 2570-070 | BALL JOINT, ROD END |
| 25 | 1 | 2000-161-BLACK | FRONT AXLE ASSEMBLY, BLACK |
| | 1 | 2000-161-BLUE | FRONT AXLE ASSEMBLY, BLUE |
| | 1 | 2000-161-GREEN | FRONT AXLE ASSEMBLY, GREEN |
| 26 | 1 | 2000-320 | FRONT PIVOT PIN ZYD. |
| 27 | 1 | 2000-208-BLACK | COMPOUND PIVOT W.A., BLACK |
| | 1 | 2000-208-BLUE | COMPOUND PIVOT W.A., BLUE |
| | 1 | 2000-208-GREEN | COMPOUND PIVOT W.A., GREEN |
| 28 | 2 | 2570-453 | KLIK PIN |
| 29 | 1 | 2570-378 | 7/8 LIFT PIN CAT. 1 |
| 30 | 1 | 2000-321 | UPPER PIVOT PIN ZYD. |
| 31 | 20 | 2502-255 | 3/8-16 X 6 SS HHCS |
| 32 | 3 | 2565-498 | ALL STEER DECAL |
| 33 | 2 | 2565-162 | YETTER DECAL, 1-1/2 X 4-1/2 |
| 34 | 1 | 2565-466 | SERIAL NUMBER DECAL |
| 35 | 3 | 2565-813 | AMBER REFLECTOR |
| 36 | 15 | 2515-552 | CABLE TIE, .15 X 11.5", BLACK |
| 37 | 1 | 1300-446 | HARNESS, COMMON WIRING |
| 38 | 1 | 1300-445 | MODULE, IMPLEMENT TURN SIGNAL |
| 39 | 1 | 2565-495 | SMV DECAL |
| 40 | 1 | 2530-208 | 3/8 X 2-1/2 ROLL PIN ZP |
| 41 | 1 | 2000-324 | TRANSPORT PIN ZYD. |
| 42 | 5 | 2565-496 | 'GREASE WEEKLY' DECAL |
| 43 | 2 | 2565-497 | 'OIL DAILY' DECAL |
| 44 | 1 | 2000-314-BLACK | STOP TUBE, BLACK |
| | 1 | 2000-314-BLUE | STOP TUBE, BLUE |
| | 1 | 2000-314-GREEN | STOP TUBE, GREEN |

MANUFACTURED 3-04 TO 6-04

PARTS IDENTIFICATION



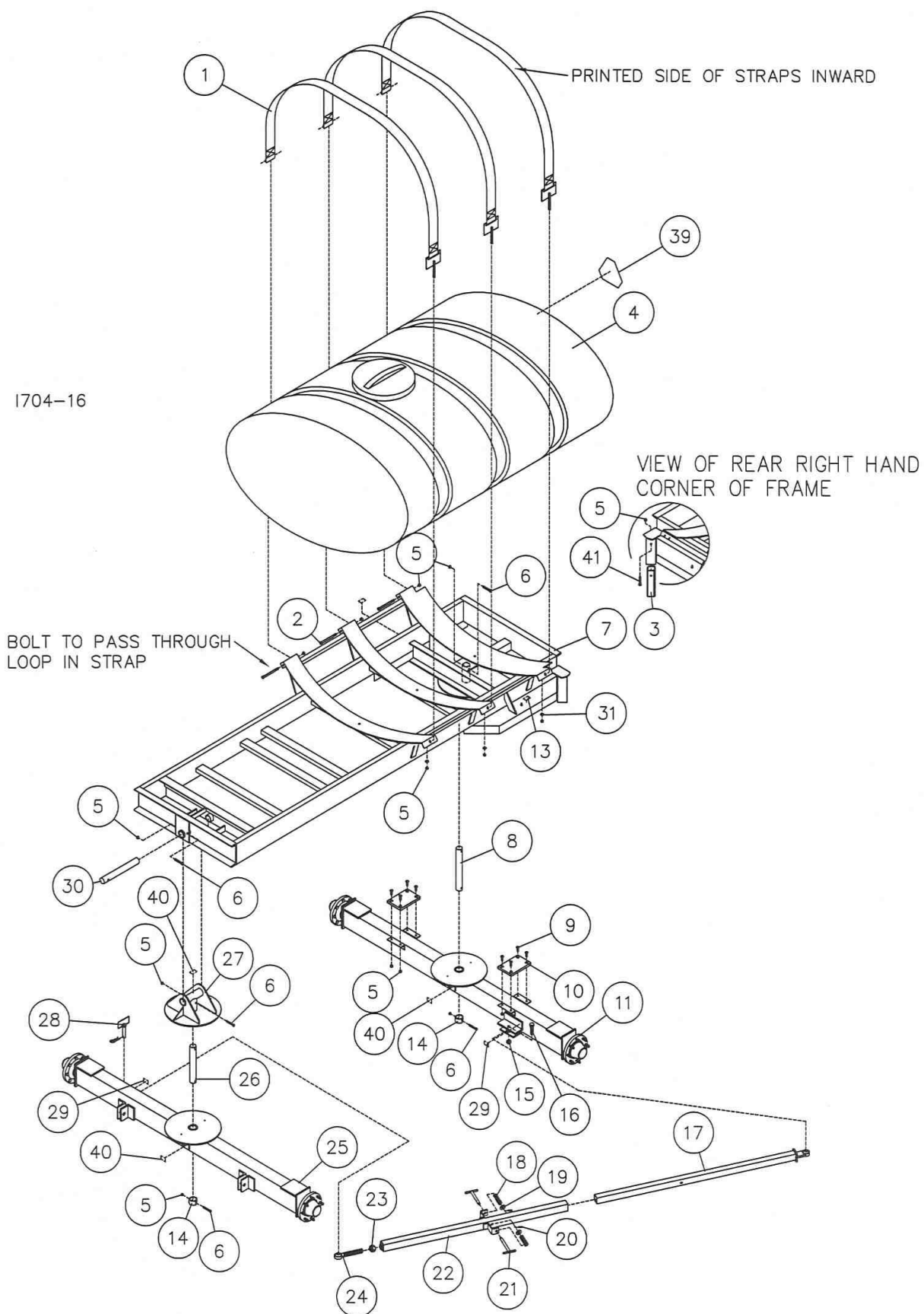
MANUFACTURED 08-04 TO 08-05

PARTS IDENTIFICATION

| DET | QTY | PART NO. | DESCRIPTION |
|-----|-----|----------------|--------------------------------|
| 1 | 5 | 2000-109 | STRAP ASSEMBLY |
| 2 | 5 | 2502-370 | 1/2-13 X 7-1/2 HHCS GR 5 ZYD |
| 3 | 1 | 2000-314 | STOP TUBE |
| 4 | 1 | 2515-700 | 1600 GAL. POLY TANK, WHITE |
| | 1 | 2515-699 | 1600 GAL. POLY TANK, YELLOW |
| 5 | 23 | 2520-357 | 1/2-13 LOCK HEX NUT ZP |
| 6 | 5 | 2502-313 | 1/2-13 X 3 HHCS GR. 5 ZP |
| 7 | 1 | 2000-203-BLACK | ALL STEER FRAME W.A., BLACK |
| | 1 | 2000-203-BLUE | ALL STEER FRAME W.A., BLUE |
| | 1 | 2000-203-GREEN | ALL STEER FRAME W.A., GREEN |
| 8 | 1 | 2000-317 | REAR PIVOT PIN ZYD. |
| 9 | 8 | 2503-352 | 1/2-13 X 1 1/2 FSHCS ZP |
| 10 | 2 | 2000-318 | POLY WEAR PAD |
| 11 | 1 | 2000-104-BLACK | REAR AXLE ASSEMBLY, BLACK |
| | 1 | 2000-104-BLUE | REAR AXLE ASSEMBLY, BLUE |
| | 1 | 2000-104-GREEN | REAR AXLE ASSEMBLY, GREEN |
| 12 | 8 | 2525-352 | 1/2 MED LOCKWASHER ZP |
| 13 | 8 | 2520-352 | 1/2-13 HEX NUT ZP |
| 14 | 2 | 2000-319 | PIVOT COLLAR, ZYD |
| 15 | 1 | 2520-540 | 7/8-9 LOCK HEX NUT ZP |
| 16 | 1 | 2502-606 | 7/8-9 X 3 HHCS GR5 ZP |
| 17 | 1 | 2000-204 | INNER LINKAGE W.A. |
| 18 | 2 | 2550-761 | THROW OUT CLUTCH SPRING, BLACK |
| 19 | 2 | 2526-501 | 3/4 STANDARD FLATWASHER ZP |
| 20 | 2 | 2530-153 | 1/4 X 2 ROLL PIN ZP |
| 21 | 2 | 2000-205 | LOCK PIN W.A. ZYD. |
| 22 | 1 | 2000-206 | OUTER TUBE W.A. |
| 23 | 1 | 2520-573 | 1 1/4-7 JAM NUT ZP. |
| 24 | 1 | 2570-070 | BALL JOINT, ROD END |
| 25 | 1 | 2000-161-BLACK | FRONT AXLE ASSEMBLY, BLACK |
| | 1 | 2000-161-BLUE | FRONT AXLE ASSEMBLY, BLUE |
| | 1 | 2000-161-GREEN | FRONT AXLE ASSEMBLY, GREEN |
| 26 | 1 | 2000-320 | FRONT PIVOT PIN ZYD. |
| 27 | 1 | 2000-208-BLACK | COMPOUND PIVOT W.A., BLACK |
| | 1 | 2000-208-BLUE | COMPOUND PIVOT W.A., BLUE |
| | 1 | 2000-208-GREEN | COMPOUND PIVOT W.A., GREEN |
| 28 | 1 | 2000-101 | HITCH PIN ASSY, SLOAN #006003 |
| 29 | 2 | 2565-497 | 'OIL DAILY' DECAL |
| 30 | 1 | 2000-321 | UPPER PIVOT PIN ZYD. |
| 31 | 5 | 2526-352 | 1/2 SAE FLAT WASHER ZYD |
| 32 | 3 | 2565-498 | ALL STEER DECAL |
| 33 | 2 | 2565-162 | YETTER DECAL, 1-1/2 X 4-1/2 |
| 34 | 1 | 2565-466 | SERIAL NUMBER DECAL |
| 35 | 3 | 2565-813 | AMBER REFLECTOR |
| 36 | 15 | 2515-552 | CABLE TIE, .15 X 11.5", BLACK |
| 37 | 1 | 1300-446 | HARNESS, COMMON WIRING |
| 38 | 1 | 1300-445 | MODULE, IMPLEMENT TURN SIGNAL |
| 39 | 1 | 2565-495 | SMV DECAL |
| 40 | 5 | 2565-496 | 'GREASE WEEKLY' DECAL |
| 41 | 1 | 2502-316 | 1/2-13 X 3-1/2 HHCS GR 5 ZYD |

MANUFACTURED 08-04 TO 08-05

PARTS IDENTIFICATION



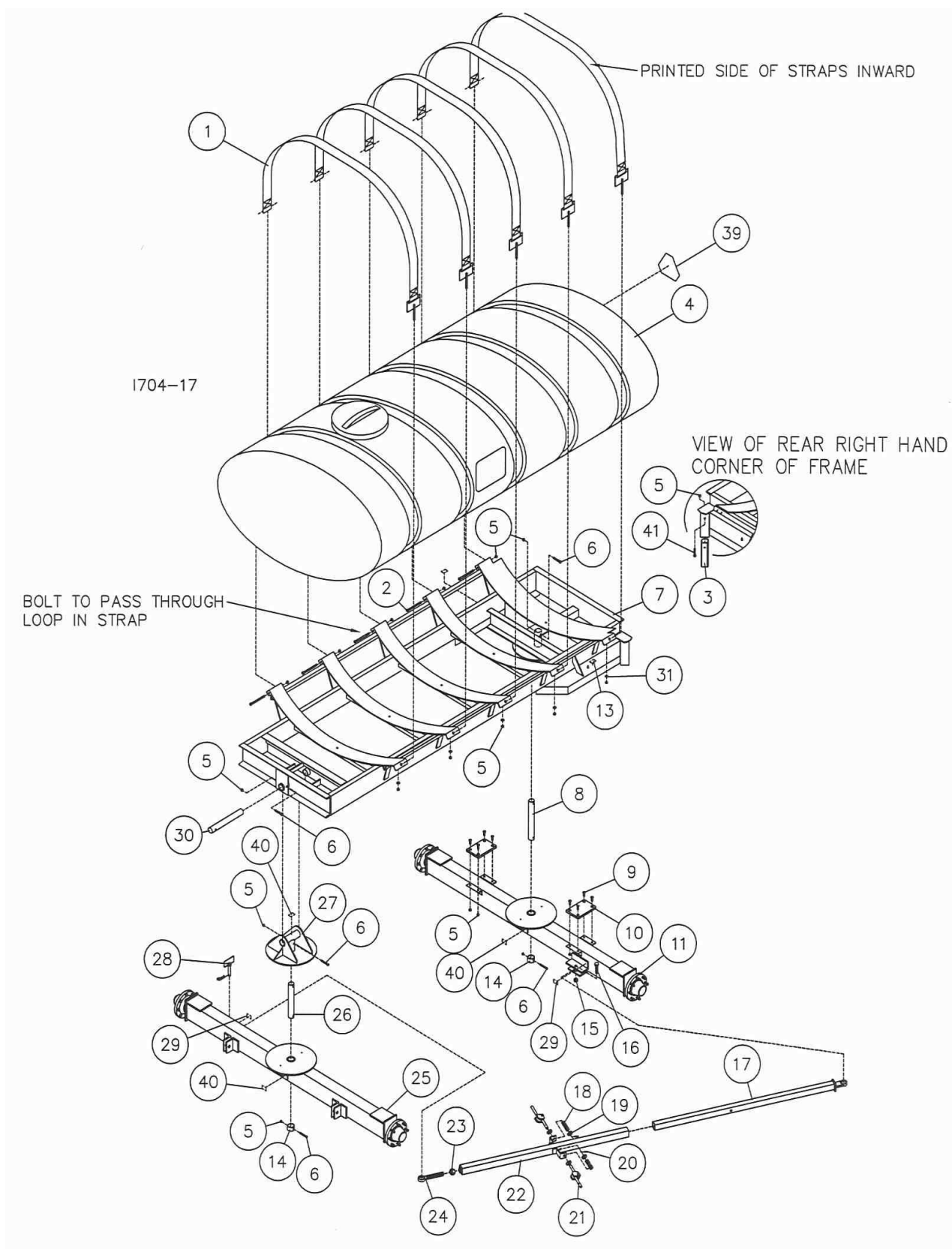
MANUFACTURED 08-04 TO 08-05

PARTS IDENTIFICATION

| DET | QTY | PART NO. | DESCRIPTION |
|-----|-----|----------------|--------------------------------|
| 1 | 3 | 2000-109 | STRAP ASSEMBLY |
| 2 | 3 | 2502-370 | 1/2-13 X 7-1/2 HHCS GR 5 ZYD |
| 3 | 1 | 2000-314 | STOP TUBE |
| 4 | 1 | 2515-716 | 1000 GAL. POLY TANK, WHITE |
| | 1 | 2515-715 | 1000 GAL. POLY TANK, YELLOW |
| 5 | 19 | 2520-357 | 1/2-13 LOCK HEX NUT ZP |
| 6 | 5 | 2502-313 | 1/2-13 X 3 HHCS GR. 5 ZP |
| 7 | 1 | 2000-227-BLACK | FRAME W/CROSSMEMBER WA, BLACK |
| | 1 | 2000-227-BLUE | FRAME W/CROSSMEMBER WA, BLUE |
| | 1 | 2000-227-GREEN | FRAME W/CROSSMEMBER WA, GREEN |
| 8 | 1 | 2000-317 | REAR PIVOT PIN ZYD. |
| 9 | 8 | 2503-352 | 1/2-13 X 1 1/2 FSHCS ZP |
| 10 | 2 | 2000-318 | POLY WEAR PAD |
| 11 | 1 | 2000-104-BLACK | REAR AXLE ASSEMBLY, BLACK |
| | 1 | 2000-104-BLUE | REAR AXLE ASSEMBLY, BLUE |
| | 1 | 2000-104-GREEN | REAR AXLE ASSEMBLY, GREEN |
| 12 | 8 | 2525-352 | 1/2 MED LOCKWASHER ZP |
| 13 | 8 | 2520-352 | 1/2-13 HEX NUT ZP |
| 14 | 2 | 2000-319 | PIVOT COLLAR, ZYD |
| 15 | 1 | 2520-540 | 7/8-9 LOCK HEX NUT ZP |
| 16 | 1 | 2502-606 | 7/8-9 X 3 HHCS GR5 ZP |
| 17 | 1 | 2000-204 | INNER LINKAGE W.A. |
| 18 | 2 | 2550-761 | THROW OUT CLUTCH SPRING, BLACK |
| 19 | 2 | 2526-501 | 3/4 STANDARD FLATWASHER ZP |
| 20 | 2 | 2530-153 | 1/4 X 2 ROLL PIN ZP |
| 21 | 2 | 2000-205 | LOCK PIN W.A. ZYD. |
| 22 | 1 | 2000-206 | OUTER TUBE W.A. |
| 23 | 1 | 2520-573 | 1 1/4-7 JAM NUT ZP. |
| 24 | 1 | 2570-070 | BALL JOINT, ROD END |
| 25 | 1 | 2000-161-BLACK | FRONT AXLE ASSEMBLY, BLACK |
| | 1 | 2000-161-BLUE | FRONT AXLE ASSEMBLY, BLUE |
| | 1 | 2000-161-GREEN | FRONT AXLE ASSEMBLY, GREEN |
| 26 | 1 | 2000-320 | FRONT PIVOT PIN ZYD. |
| 27 | 1 | 2000-208-BLACK | COMPOUND PIVOT W.A., BLACK |
| | 1 | 2000-208-BLUE | COMPOUND PIVOT W.A., BLUE |
| | 1 | 2000-208-GREEN | COMPOUND PIVOT W.A., GREEN |
| 28 | 1 | 2000-101 | HITCH PIN ASSY, SLOAN #006003 |
| 29 | 2 | 2565-497 | 'OIL DAILY' DECAL |
| 30 | 1 | 2000-321 | UPPER PIVOT PIN ZYD. |
| 31 | 3 | 2526-352 | 1/2 SAE FLAT WASHER ZYD |
| 32 | 3 | 2565-498 | ALL STEER DECAL |
| 33 | 2 | 2565-162 | YETTER DECAL, 1-1/2 X 4-1/2 |
| 34 | 1 | 2565-466 | SERIAL NUMBER DECAL |
| 35 | 3 | 2565-813 | AMBER REFLECTOR |
| 36 | 15 | 2515-552 | CABLE TIE, .15 X 11.5", BLACK |
| 37 | 1 | 1300-446 | HARNESS, COMMON WIRING |
| 38 | 1 | 1300-445 | MODULE, IMPLEMENT TURN SIGNAL |
| 39 | 1 | 2565-495 | SMV DECAL |
| 40 | 5 | 2565-496 | 'GREASE WEEKLY' DECAL |
| 41 | 1 | 2502-316 | 1/2-13 X 3-1/2 HHCS GR 5 ZYD |

MANUFACTURED 08-04 TO 08-05

PARTS IDENTIFICATION



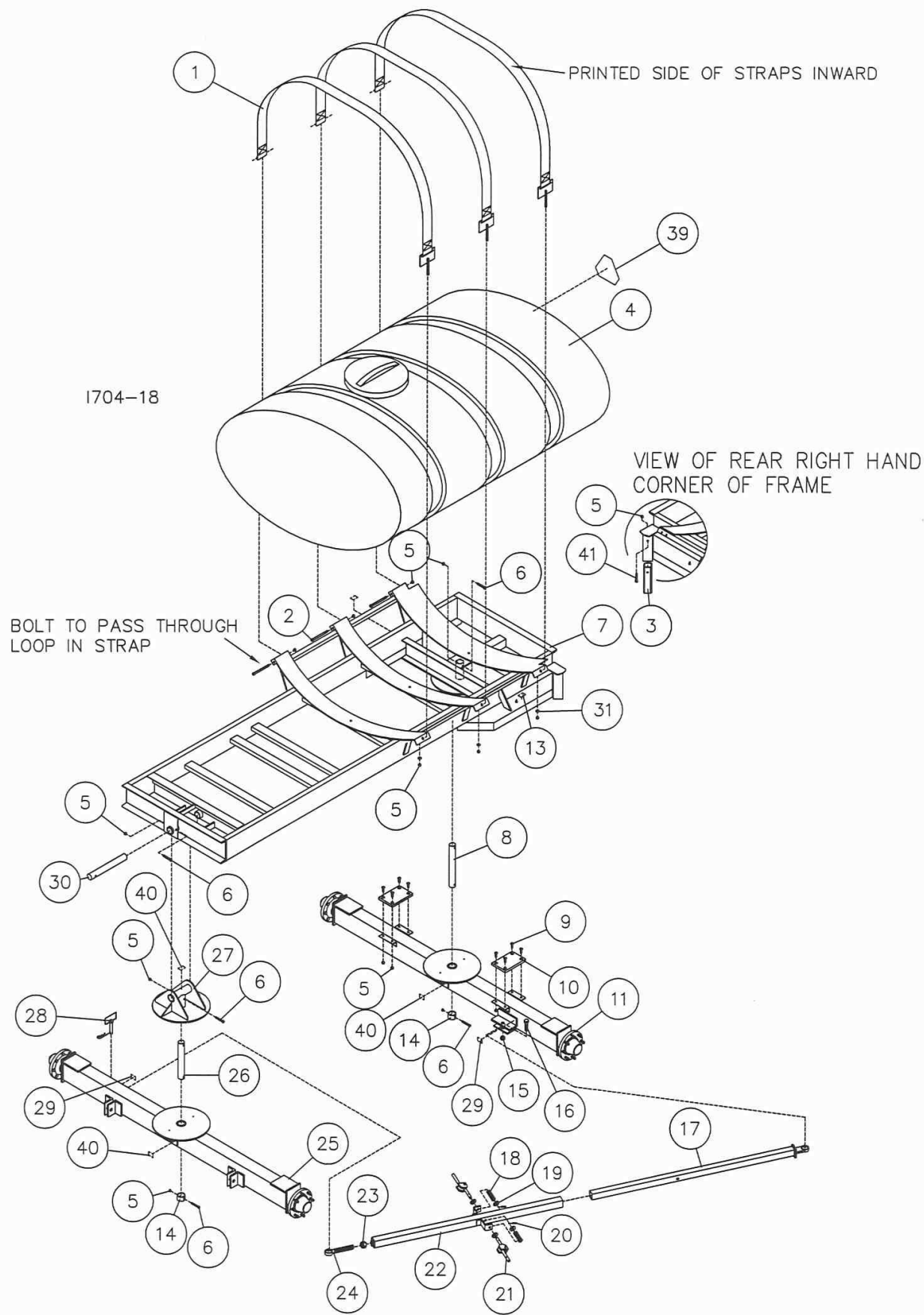
MANUFACTURED 08-05 TO 07-07

PARTS IDENTIFICATION

| DET | QTY | PART NO. | DESCRIPTION |
|-----|-----|----------------|--------------------------------|
| 1 | 5 | 2000-109 | STRAP ASSEMBLY |
| 2 | 5 | 2502-370 | 1/2-13 X 7-1/2 HHCS GR 5 ZYD |
| 3 | 1 | 2000-314 | STOP TUBE |
| 4 | 1 | 2515-700 | 1600 GAL. POLY TANK, WHITE |
| | 1 | 2515-699 | 1600 GAL. POLY TANK, YELLOW |
| 5 | 23 | 2520-357 | 1/2-13 LOCK HEX NUT ZP |
| 6 | 5 | 2502-313 | 1/2-13 X 3 HHCS GR. 5 ZP |
| 7 | 1 | 2000-203-BLACK | ALL STEER FRAME W.A., BLACK |
| | 1 | 2000-203-BLUE | ALL STEER FRAME W.A., BLUE |
| | 1 | 2000-203-GREEN | ALL STEER FRAME W.A., GREEN |
| 8 | 1 | 2000-317 | REAR PIVOT PIN ZYD. |
| 9 | 8 | 2503-352 | 1/2-13 X 1 1/2 FSHCS ZP |
| 10 | 2 | 2000-318 | POLY WEAR PAD |
| 11 | 1 | 2000-104-BLACK | REAR AXLE ASSEMBLY, BLACK |
| | 1 | 2000-104-BLUE | REAR AXLE ASSEMBLY, BLUE |
| | 1 | 2000-104-GREEN | REAR AXLE ASSEMBLY, GREEN |
| 12 | 8 | 2525-352 | 1/2 MED LOCKWASHER ZP |
| 13 | 8 | 2520-352 | 1/2-13 HEX NUT ZP |
| 14 | 2 | 2000-319 | PIVOT COLLAR, ZYD |
| 15 | 1 | 2520-540 | 7/8-9 LOCK HEX NUT ZP |
| 16 | 1 | 2502-606 | 7/8-9 X 3 HHCS GR5 ZP |
| 17 | 1 | 2000-204 | INNER LINKAGE W.A. |
| 18 | 2 | 2550-761 | THROW OUT CLUTCH SPRING, BLACK |
| 19 | 4 | 2526-501 | 3/4 STANDARD FLATWASHER ZP |
| 20 | 2 | 2530-153 | 1/4 X 2 ROLL PIN ZP |
| 21 | 2 | 2000-163 | CAM LOCK ASSEMBLY |
| 22 | 1 | 2000-206 | OUTER TUBE W.A. |
| 23 | 1 | 2520-573 | 1 1/4-7 JAM NUT ZP. |
| 24 | 1 | 2570-070 | BALL JOINT, ROD END |
| 25 | 1 | 2000-161-BLACK | FRONT AXLE ASSEMBLY, BLACK |
| | 1 | 2000-161-BLUE | FRONT AXLE ASSEMBLY, BLUE |
| | 1 | 2000-161-GREEN | FRONT AXLE ASSEMBLY, GREEN |
| 26 | 1 | 2000-320 | FRONT PIVOT PIN ZYD. |
| 27 | 1 | 2000-208 | COMPOUND PIVOT W.A. |
| 28 | 1 | 2000-101 | HITCH PIN ASSY, SLOAN #006003 |
| 29 | 2 | 2565-497 | 'OIL DAILY' DECAL |
| 30 | 1 | 2000-321 | UPPER PIVOT PIN ZYD. |
| 31 | 5 | 2526-352 | 1/2 SAE FLAT WASHER ZYD |
| 32 | 3 | 2565-498 | ALL STEER DECAL |
| 33 | 2 | 2565-162 | YETTER DECAL, 1-1/2 X 4-1/2 |
| 34 | 1 | 2565-466 | SERIAL NUMBER DECAL |
| 35 | 3 | 2565-813 | AMBER REFLECTOR |
| 36 | 15 | 2515-552 | CABLE TIE, .15 X 11.5", BLACK |
| 37 | 1 | 1300-446 | HARNESS, COMMON WIRING |
| 38 | 1 | 1300-445 | MODULE, IMPLEMENT TURN SIGNAL |
| 39 | 1 | 2565-495 | SMV DECAL |
| 40 | 5 | 2565-496 | 'GREASE WEEKLY' DECAL |
| 41 | 1 | 2502-316 | 1/2-13 X 3-1/2 HHCS GR 5 ZYD |

MANUFACTURED 08-05 TO 07-07

PARTS IDENTIFICATION



MANUFACTURED 08-05 TO 07-07

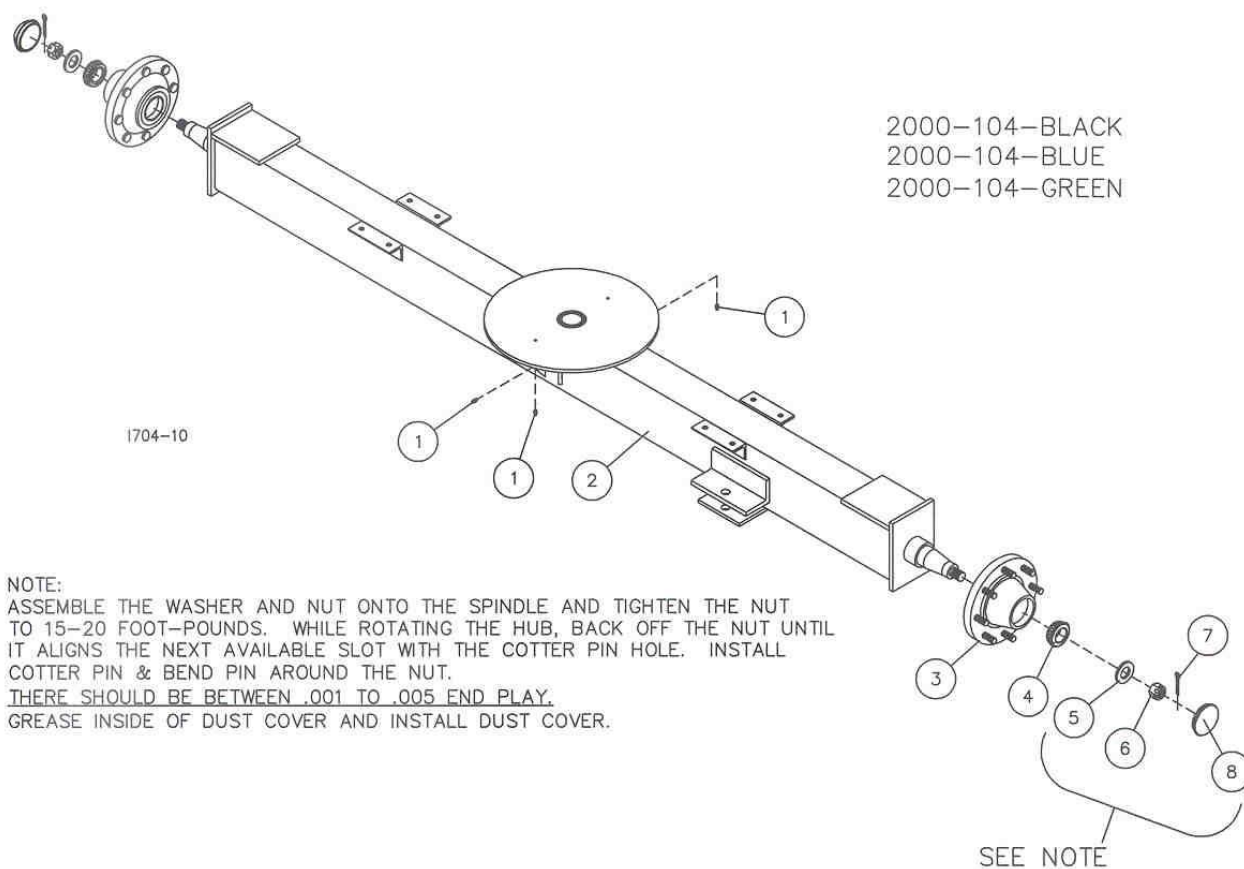
PARTS IDENTIFICATION

| DET | QTY | PART NO. | DESCRIPTION |
|-----|-----|----------------|--------------------------------|
| 1 | 3 | 2000-109 | STRAP ASSEMBLY |
| 2 | 3 | 2502-370 | 1/2-13 X 7-1/2 HHCS GR 5 ZYD |
| 3 | 1 | 2000-314 | STOP TUBE |
| 4 | 1 | 2515-716 | 1000 GAL. POLY TANK, WHITE |
| | 1 | 2515-715 | 1000 GAL. POLY TANK, YELLOW |
| 5 | 19 | 2520-357 | 1/2-13 LOCK HEX NUT ZP |
| 6 | 5 | 2502-313 | 1/2-13 X 3 HHCS GR. 5 ZP |
| 7 | 1 | 2000-227-BLACK | FRAME W/CROSSMEMBER WA, BLACK |
| | 1 | 2000-227-BLUE | FRAME W/CROSSMEMBER WA, BLUE |
| | 1 | 2000-227-GREEN | FRAME W/CROSSMEMBER WA, GREEN |
| 8 | 1 | 2000-317 | REAR PIVOT PIN ZYD. |
| 9 | 8 | 2503-352 | 1/2-13 X 1 1/2 FSHCS ZP |
| 10 | 2 | 2000-318 | POLY WEAR PAD |
| 11 | 1 | 2000-104-BLACK | REAR AXLE ASSEMBLY, BLACK |
| | 1 | 2000-104-BLUE | REAR AXLE ASSEMBLY, BLUE |
| | 1 | 2000-104-GREEN | REAR AXLE ASSEMBLY, GREEN |
| 12 | 8 | 2525-352 | 1/2 MED LOCKWASHER ZP |
| 13 | 8 | 2520-352 | 1/2-13 HEX NUT ZP |
| 14 | 2 | 2000-319 | PIVOT COLLAR, ZYD |
| 15 | 1 | 2520-540 | 7/8-9 LOCK HEX NUT ZP |
| 16 | 1 | 2502-606 | 7/8-9 X 3 HHCS GR5 ZP |
| 17 | 1 | 2000-204 | INNER LINKAGE W.A. |
| 18 | 2 | 2550-761 | THROW OUT CLUTCH SPRING, BLACK |
| 19 | 4 | 2526-501 | 3/4 STANDARD FLATWASHER ZP |
| 20 | 2 | 2530-153 | 1/4 X 2 ROLL PIN ZP |
| 21 | 2 | 2000-163 | CAM LOCK ASSEMBLY |
| 22 | 1 | 2000-206 | OUTER TUBE W.A. |
| 23 | 1 | 2520-573 | 1 1/4-7 JAM NUT ZP. |
| 24 | 1 | 2570-070 | BALL JOINT, ROD END |
| 25 | 1 | 2000-161-BLACK | FRONT AXLE ASSEMBLY, BLACK |
| | 1 | 2000-161-BLUE | FRONT AXLE ASSEMBLY, BLUE |
| | 1 | 2000-161-GREEN | FRONT AXLE ASSEMBLY, GREEN |
| 26 | 1 | 2000-320 | FRONT PIVOT PIN ZYD. |
| 27 | 1 | 2000-208 | COMPOUND PIVOT W.A. |
| 28 | 1 | 2000-101 | HITCH PIN ASSY, SLOAN #006003 |
| 29 | 2 | 2565-497 | 'OIL DAILY' DECAL |
| 30 | 1 | 2000-321 | UPPER PIVOT PIN ZYD. |
| 31 | 3 | 2526-352 | 1/2 SAE FLAT WASHER ZYD |
| 32 | 3 | 2565-498 | ALL STEER DECAL |
| 33 | 2 | 2565-162 | YETTER DECAL, 1-1/2 X 4-1/2 |
| 34 | 1 | 2565-466 | SERIAL NUMBER DECAL |
| 35 | 3 | 2565-813 | AMBER REFLECTOR |
| 36 | 15 | 2515-552 | CABLE TIE, .15 X 11.5", BLACK |
| 37 | 1 | 1300-446 | HARNESS, COMMON WIRING |
| 38 | 1 | 1300-445 | MODULE, IMPLEMENT TURN SIGNAL |
| 39 | 1 | 2565-495 | SMV DECAL |
| 40 | 5 | 2565-496 | 'GREASE WEEKLY' DECAL |
| 41 | 1 | 2502-316 | 1/2-13 X 3-1/2 HHCS GR 5 ZYD |

MANUFACTURED 08-05 TO 07-07

PARTS IDENTIFICATION

REAR AXLE ASSEMBLY

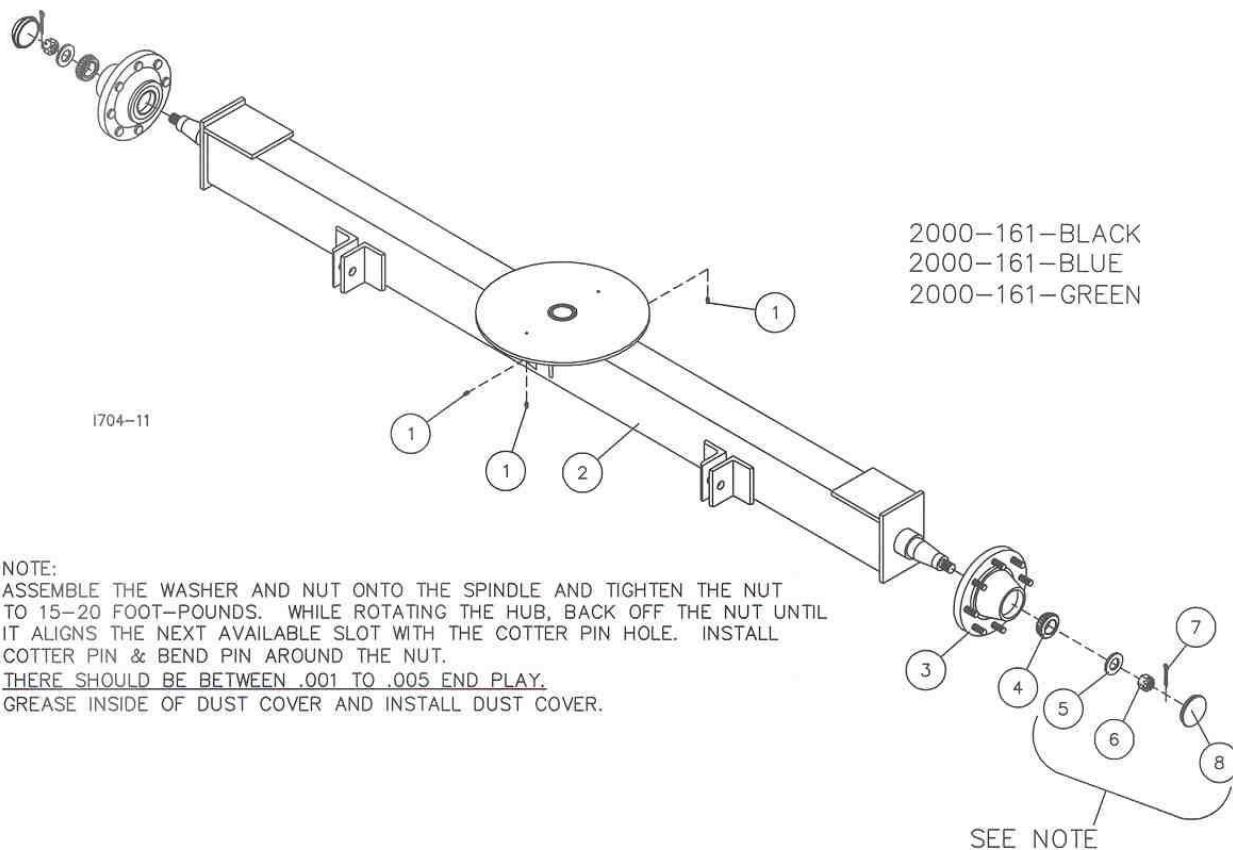


| DET | QTY | PART NO. | DESCRIPTION |
|-----|-----|----------|-------------------------------|
| 1 | 3 | 2533-110 | 1/4-28 ZERK STRAIGHT SELF-TAP |
| 2 | 1 | 2000-209 | REAR AXLE W.A. |
| 3 | 2 | 2000-162 | HUB SUB ASSEMBLY |
| 4 | 2 | 2550-064 | BEARING |
| 5 | 2 | 2526-549 | WASHER |
| 6 | 2 | 2520-567 | 1-14 UNS CASTLE NUT |
| 7 | 2 | 2531-128 | COTTER PIN |
| 8 | 2 | 2550-065 | DUST CAP |

MANUFACTURED 03-04 TO 07-07

PARTS IDENTIFICATION

FRONT AXLE ASSEMBLY



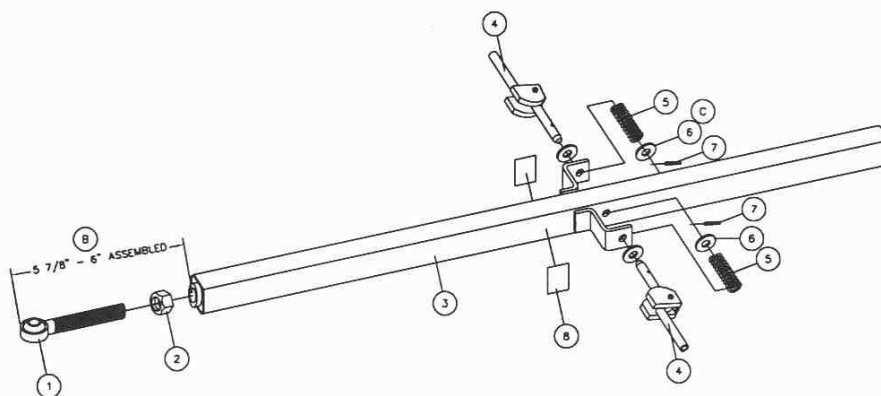
| DET | QTY | PART NO. | DESCRIPTION |
|-----|-----|----------|-------------------------------|
| 1 | 3 | 2533-110 | 1/4-28 ZERK STRAIGHT SELF-TAP |
| 2 | 1 | 2000-207 | FRONT AXLE W.A. |
| 3 | 2 | 2000-162 | HUB SUB ASSEMBLY |
| 4 | 2 | 2550-064 | BEARING |
| 5 | 2 | 2526-549 | WASHER |
| 6 | 2 | 2520-567 | 1-14 UNS CASTLE NUT |
| 7 | 2 | 2531-128 | COTTER PIN |
| 8 | 2 | 2550-065 | DUST CAP |

MANUFACTURED 03-04 TO 07-07

PARTS IDENTIFICATION

2000-108

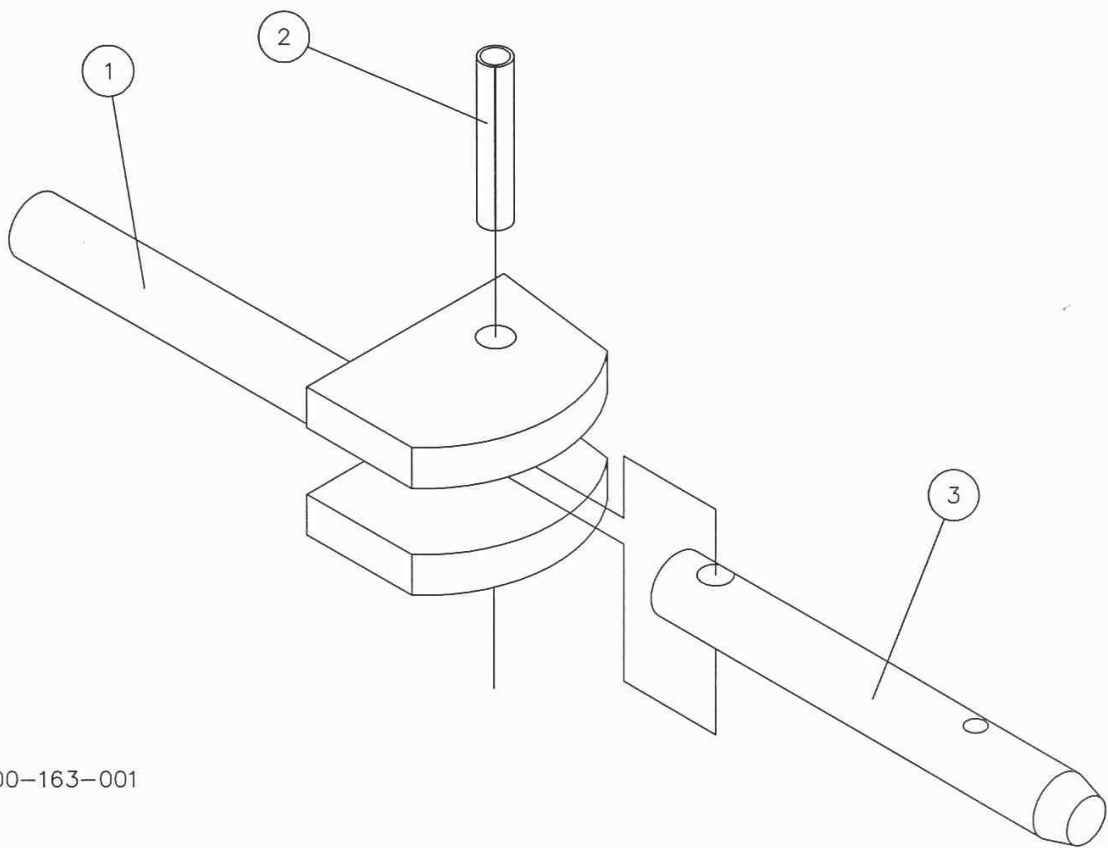
1751-2000-108-001



| DET | QTY | PART NO. | DESCRIPTION |
|-----|-----|----------|-------------------------|
| 1 | 1 | 2570-070 | BALL JOINT |
| 2 | 1 | 2520-573 | 1 1/4-7 JAM NUT |
| 3 | 1 | 2000-206 | OUTER TUBE |
| 4 | 2 | 2000-163 | CAM LOCK ASSEMBLY |
| 5 | 2 | 2550-761 | SPRING |
| 6 | 4 | 2526-501 | 3/4 STANDARD FLATWASHER |
| 7 | 2 | 2530-153 | 1/4 X 2 ROLL PIN |
| 8 | 2 | 2565-816 | CAM LOCK CAUTION DECAL |

UPDATED 06/10/08

PARTS IDENTIFICATION

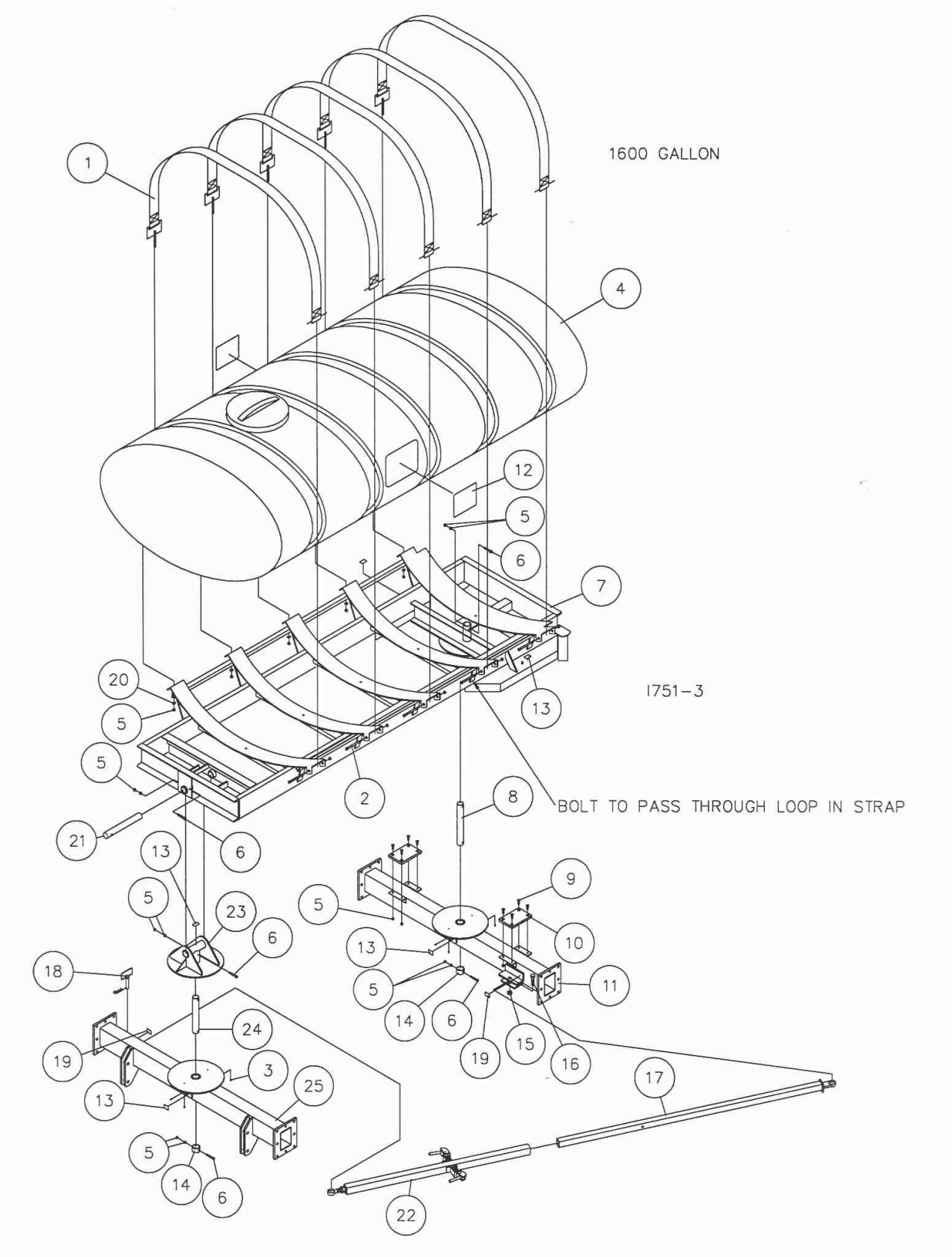


I751-2000-163-001

2000-163 CAM LOCK ASSEMBLY

| DET | QTY | PART NO. | DESCRIPTION |
|-----|-----|----------|-----------------------|
| 1 | 1 | 2000-229 | CAM LOCK |
| 2 | 1 | 2530-212 | 3/8 X 2 ROLL PIN Z.P. |
| 3 | 1 | 2000-388 | LOCK PIN |

PARTS IDENTIFICATION



MANUFACTURED 08-07 TO 01-08

PARTS IDENTIFICATION

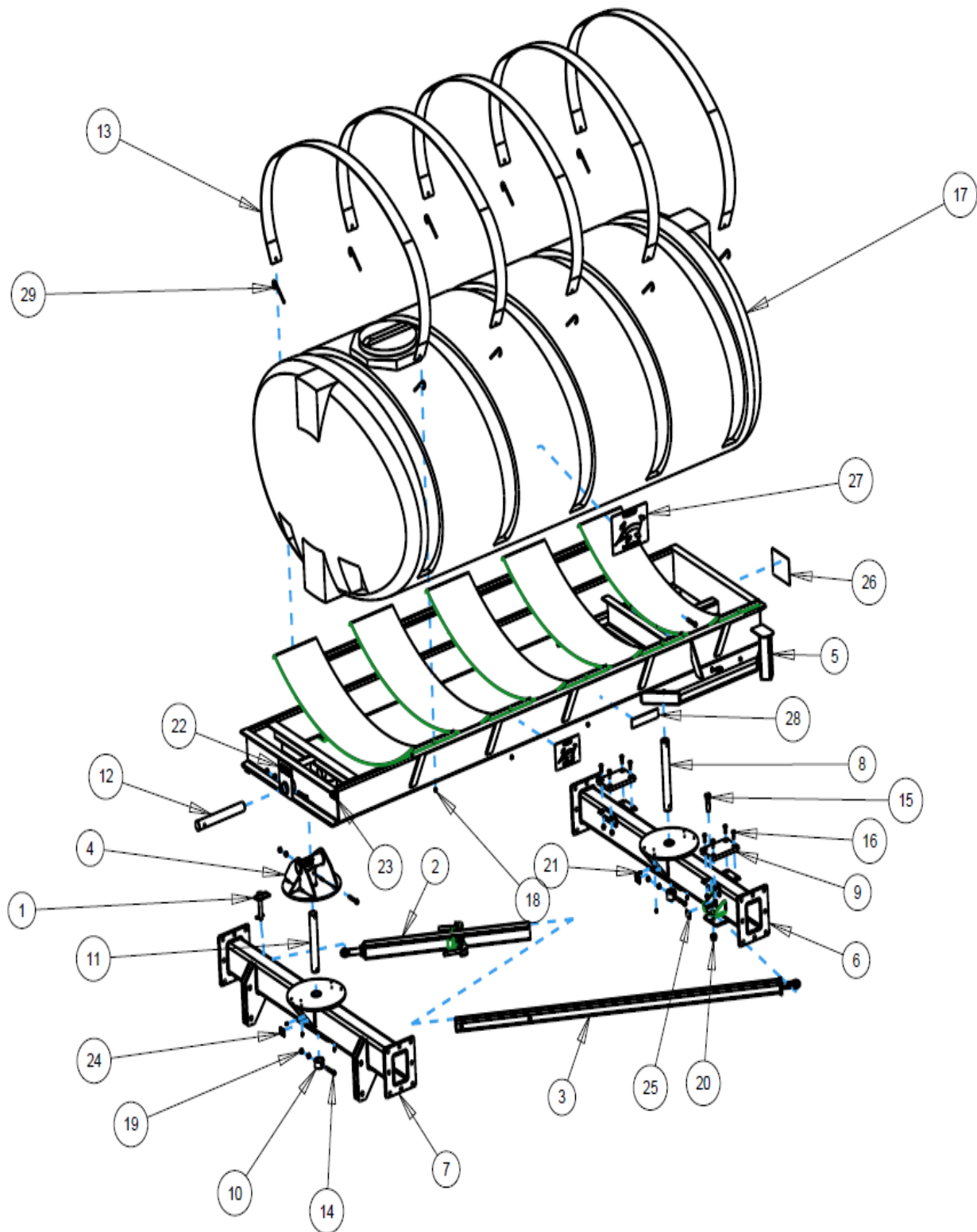
1600 GALLON

| DET | QTY | PART NO. | DESCRIPTION |
|------|-----|----------------|---|
| 1 | 5 | 2000-109 | STRAP ASSEMBLY |
| 2 | 5 | 2502-370 | 1/2-13 X 7-1/2 HHCS GR 5 ZYD |
| 3 | 6 | 2533-110 | 1/4-28 ZERK STRAIGHT SELF-TAP |
| | 1 | 2515-699 | 1600 GAL. POLY TANK, YELLOW (GREEN ONLY) |
| 4 | 1 | 2515-700 | 1600 GAL. POLY TANK, WHITE (BLACK & BLUE) |
| 5 | 28 | 2520-357 | 1/2-13 LOCK HEX NUT ZP |
| 6 | 5 | 2502-316 | 1/2-13 X 3-1/2 HHCS GR. 5 ZP |
| * 7 | 1 | 2000-225-BLACK | 1600 GAL. FRAME W.A., BLACK |
| 8 | 1 | 2000-317 | REAR PIVOT PIN ZYD. |
| 9 | 8 | 2503-352 | 1/2-13 X 1 1/2 FSHCS ZP |
| 10 | 2 | 2000-318 | POLY WEAR PAD |
| * 11 | 1 | 2000-280-BLACK | REAR AXLE WA BLACK |
| 12 | 2 | 2565-499 | ALL STEER TANK DECAL |
| 13 | 5 | 2565-496 | 'GREASE WEEKLY' DECAL |
| * 14 | 2 | 2000-319 | PIVOT COLLAR ZYD. |
| 15 | 1 | 2520-540 | 7/8-9 LOCK HEX NUT ZP |
| 16 | 1 | 2502-606 | 7/8-9 X 3 HHCS GR5 ZP |
| 17 | 1 | 2000-204 | INNER LINKAGE W.A. |
| 18 | 1 | 2000-101 | HITCH PIN ASSY, SLOAN #006003 |
| 19 | 2 | 2565-497 | 'OIL DAILY' DECAL |
| 20 | 5 | 2526-352 | 1/2 SAE FLATWASHER ZP |
| 21 | 1 | 2000-321 | UPPER PIVOT PIN ZYD. |
| 22 | 1 | 2000-108 | LINKAGE SUB-ASS'Y |
| 23 | 1 | 2000-208 | COMPOUND PIVOT W.A. |
| 24 | 1 | 2000-320 | FRONT PIVOT PIN ZYD. |
| * 25 | 1 | 2000-278-BLACK | FRONT AXLE WA BLACK |

* SUBSTITUTE -BLUE AND -GREEN FOR BLUE AND GREEN MODELS

MANUFACTURED 08-07 TO 01-08

PARTS IDENTIFICATION 2000-010 1600 GALLON TANK



MANUFACTURED 02-08 TO PRESENT

PARTS IDENTIFICATION 2000-010 1600 GALLON TANK

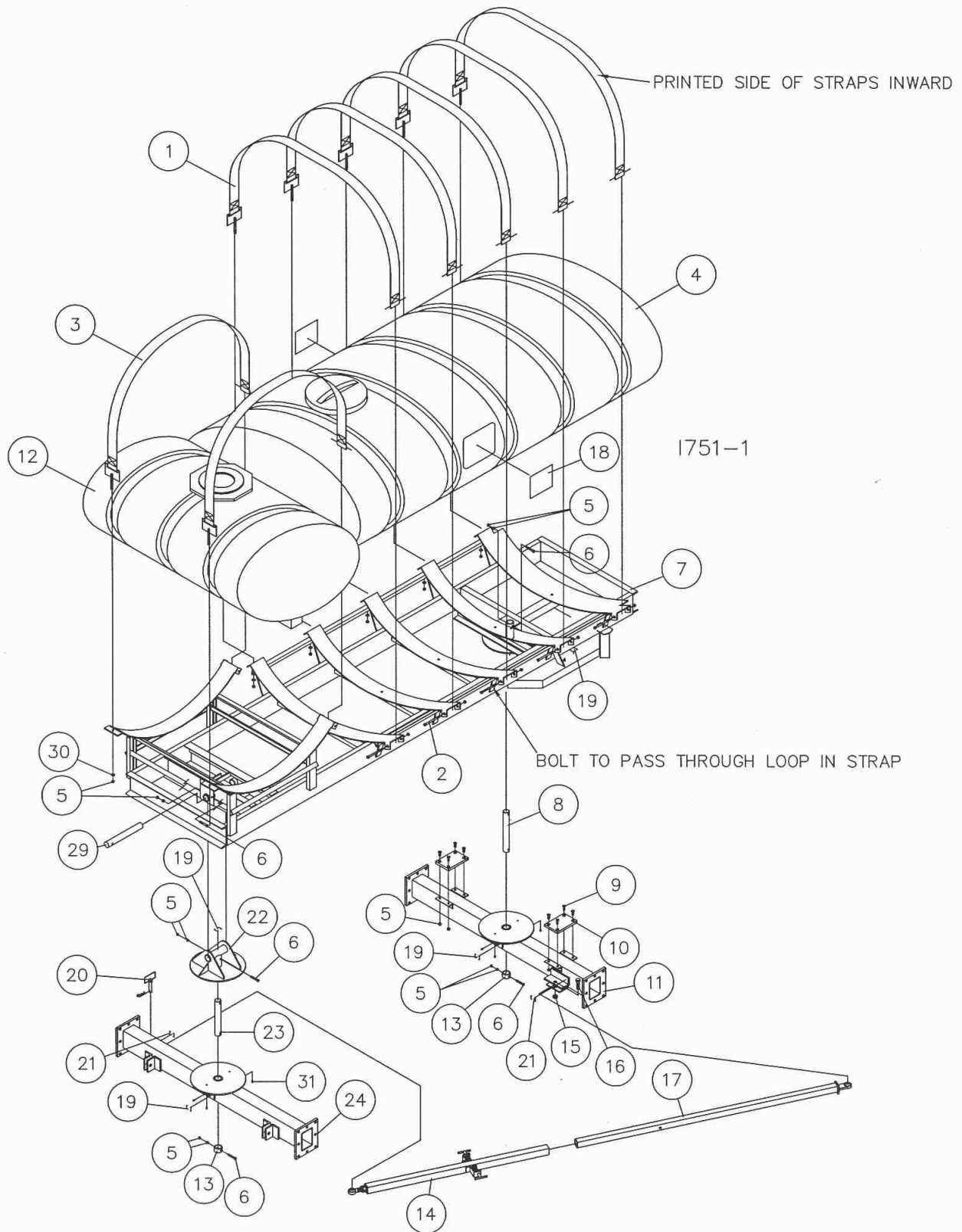
| ITEM | PART NO. | DESCRIPTION | QTY |
|------|-----------------|--------------------------------|-----|
| 1 | 2000-101 | PIN ASSEMBLY | 1 |
| 2 | 2000-108 | LINKAGE SUB ASSEMBLY | 1 |
| 3 | 2000-204 | INNER LINKAGE | 1 |
| 4 | 2000-208 | COMPOUND PIVOT | 1 |
| 5 | *2000-288-BLACK | 1600 FRAME | 1 |
| 6 | *2000-297-BLACK | REAR AXLE | 1 |
| 7 | *2000-298-BLACK | FRONT AXLE | 1 |
| 8 | 2000-317 | REAR PIVOT PIN | 1 |
| 9 | 2000-318 | POLY WEAR PAD | 2 |
| 10 | 2000-319 | PIVOT COLLAR | 2 |
| 11 | 2000-321 | FRONT PIVOT PIN | 1 |
| 12 | 2000-321 | UPPER PIVOT PIN | 1 |
| 13 | 2000-530 | STEEL BAND STRAP | 5 |
| 14 | 2502-316 | ½-13 X 3-1/2 CAP SCREW GRADE 5 | 5 |
| 15 | 2502-606 | 7/8-9 X 3 CAP SCREW GRADE 5 | 1 |
| 16 | 2503-352 | ½-13 X 1-1/2 FLAT HEAD SCREW | 8 |
| 17 | 2515-699 | 1600 GALLON POLY TANK YELLOW | 1 |
| | 2515-700 | 1600 GALLON POLY TANK WHITE | 1 |
| 18 | 2520-251 | 3/8-16 HEX NUT | 10 |
| 19 | 2520-357 | ½-13 LOCK HEX NUT GRADE 2 | 18 |
| 20 | 2520-540 | 7/8-9 LOCK HEX NUT | 1 |
| 21 | 2533-110 | ¼-28 LUBE FITTING SELF-TAP | 6 |
| 22 | 2565-162 | YETTER DECAL | 1 |
| 23 | 2565-466 | IDENTIFICATION PLATE | 1 |
| 24 | 2565-496 | "GREASE WEEKLY" DECAL | 5 |
| 25 | 2565-497 | OIL DAILY DECAL | 2 |
| 26 | 2565-498 | ALLSTEER DECAL | 3 |
| 27 | 2565-499 | ALLSTEER TANK DECAL | 2 |
| 28 | 2565-813 | YELLOW REFLECTOR DECAL | 2 |
| 29 | 2570-511 | 3/8-16 X 6 "J" BOLT | 10 |

*-GREEN ALSO AVAILABLE

MANUFACTURED 02-08 TO PRESENT

PARTS IDENTIFICATION

2000-025 2000 GALLON DUAL TANK



MANUFACTURED 08-07 TO 01-08

PARTS IDENTIFICATION

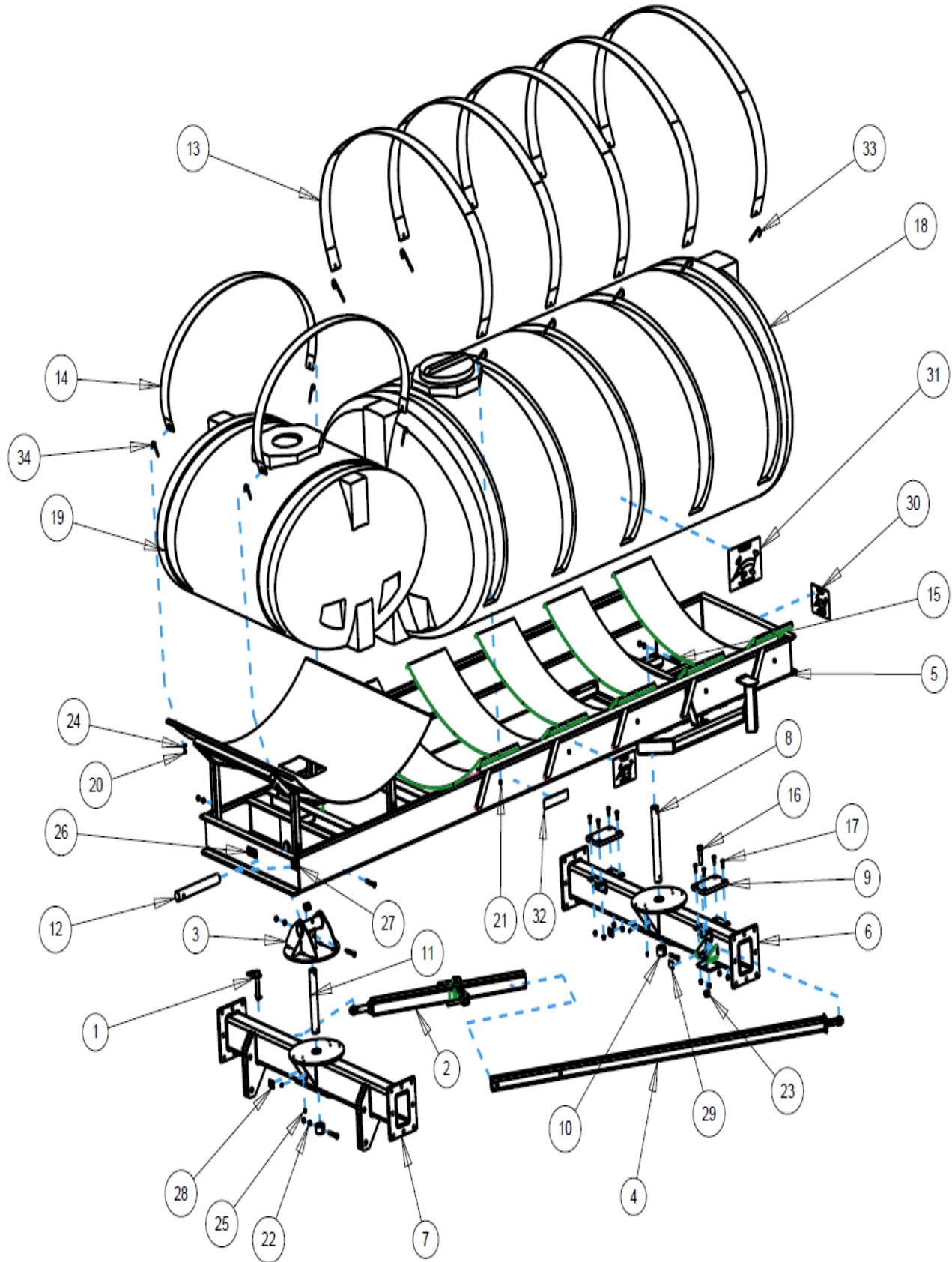
1600/400 GALLON

| DET | QTY | PART NO. | DESCRIPTION |
|-----|-----|----------|--|
| | 1 | 5 | 2000-109 STRAP ASSEMBLY |
| | 2 | 7 | 2502-370 1/2-13 X 7-1/2 HHCS GR 5 ZYD |
| | 3 | 2 | 2000-133 STRAP ASS'Y |
| | | 1 | 2515-699 1600 GAL. POLY TANK, YELLOW (GREEN ONLY) |
| | 4 | 1 | 2515-700 1600 GAL. POLY TANK, WHITE (BLACK & BLUE) |
| | 5 | 30 | 2520-357 1/2-13 LOCK HEX NUT ZP |
| | 6 | 5 | 2502-316 1/2-13 X 3-1/2 HHCS GR. 5 ZP |
| * | 7 | 1 | 2000-259-BLACK FRAME WA,2000 DUAL TANK,BLACK |
| | 8 | 1 | 2000-317 REAR PIVOT PIN ZYD. |
| | 9 | 8 | 2503-352 1/2-13 X 1 1/2 FSHCS ZP |
| | 10 | 2 | 2000-318 POLY WEAR PAD |
| * | 11 | 1 | 2000-280-BLACK REAR AXLE WA BLACK |
| | | 1 | 2515-723 400 GAL. POLY TANK, YELLOW (GREEN ONLY) |
| | 12 | 1 | 2515-722 400 GAL. POLY TANK, WHITE (BLACK & BLUE) |
| * | 13 | 2 | 2000-319 PIVOT COLLAR ZYD. |
| | 14 | 1 | 2000-108 LINKAGE SUB-ASS'Y |
| | 15 | 1 | 2520-540 7/8-9 LOCK HEX NUT ZP |
| | 16 | 1 | 2502-606 7/8-9 X 3 HHCS GR5 ZP |
| | 17 | 1 | 2000-260 INNER LINKAGE W.A., 2000 DUAL |
| | 18 | 2 | 2565-499 ALL STEER TANK DECAL |
| | 19 | 5 | 2565-496 'GREASE WEEKLY' DECAL |
| | 20 | 1 | 2000-101 HITCH PIN ASSY, SLOAN #006003 |
| | 21 | 2 | 2565-497 'OIL DAILY' DECAL |
| * | 22 | 1 | 2000-208 COMPOUND PIVOT W.A., BLACK |
| | 23 | 1 | 2000-320 FRONT PIVOT PIN ZYD. |
| * | 24 | 1 | 2000-278-BLACK FRONT AXLE WA BLACK |
| | | 3 | 2565-473 ALL STEER DECAL, YELLOW(2000-010-GREEN) |
| | 25 | 3 | 2565-498 ALL STEER DECAL |
| | | 1 | 2565-698 YETTER DECAL,1.5X4.5, YELLOW(-GREEN) |
| | 26 | 1 | 2565-162 YETTER DECAL, 1-1/2 X 4-1/2 |
| | 27 | 1 | 2565-466 SERIAL NUMBER DECAL |
| | 28 | 2 | 2565-813 USE JD5921 AMBER REFLECTOR |
| | 29 | 1 | 2000-321 UPPER PIVOT PIN ZYD. |
| | 30 | 7 | 2526-352 1/2 SAE FLATWASHER ZP |
| | 31 | 6 | 2533-110 1/4-28 ZERK STRAIGHT SELF-TAP |

* SUBSTITUTE -BLUE AND -GREEN FOR BLUE AND GREEN MODELS

MANUFACTURED 08-07 TO 01-08

PARTS IDENTIFICATION **2000-025 2000 GALLON DUAL TANK**



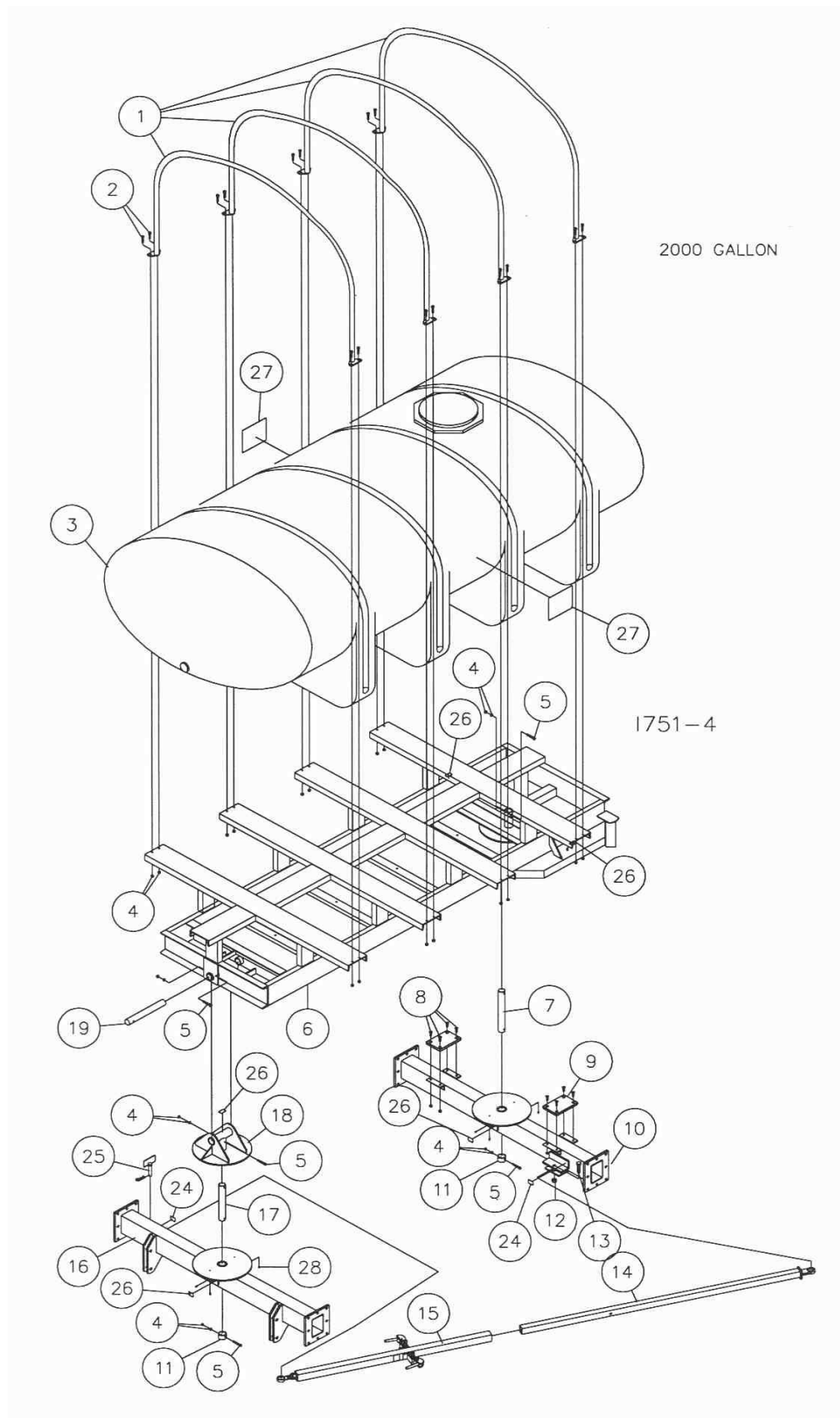
MANUFACTURED 02-08 TO PRESENT

PARTS IDENTIFICATION
2000-025 2000 GALLON DUAL TANK

| ITEM | PART NO. | DESCRIPTION | QTY |
|------|-----------------|----------------------------------|-----|
| 1 | 2000-101 | PIN ASSEMBLY | 1 |
| 2 | 2000-108 | LINKAGE ASSEMBLY | 1 |
| 3 | 2000-208 | COMPOUND PIVOT | 1 |
| 4 | 2000-260 | INNER LINKAGE 2000 DUAL TANK | 1 |
| 5 | *2000-289-BLACK | 2000 DUAL TANK FRAME | 1 |
| 6 | *2000-297-BLACK | REAR AXLE | 1 |
| 7 | *2000-298-BLACK | FRONT AXLE | 1 |
| 8 | 2000-317 | REAR PIVOT PIN | 1 |
| 9 | 2000-318 | POLY WEAR PAD | 2 |
| 10 | 2000-319 | PIVOT COLLAR | 2 |
| 11 | 2000-320 | FRONT PIVOT PIN | 1 |
| 12 | 2000-321 | UPPER PIVOT PIN | 1 |
| 13 | 2000-530 | STEEL BAND STRAP 1600 | 5 |
| 14 | 2000-531 | STEEL BAN STRAP 400 | 2 |
| 15 | 2502-316 | 1/2-13 X 3-1/2 CAP SCREW GRADE 5 | 5 |
| 16 | 2502-606 | 7/8-9 X 3 CAP SCREW GRADE 5 | 1 |
| 17 | 2503-352 | 1/2-13 X 1-1/2 FLAT HEAD SCREW | 8 |
| 18 | 2515-699 | 1600 GALLON POLY TANK YELLOW | 1 |
| | 2515-700 | 1600 GALLON POLY TANK WHITE | 1 |
| 19 | 2515-722 | 400 GALLON POLY TANK WHITE | 1 |
| | 2515-723 | 400 GALLON POLY TANK YELLOW | 1 |
| 20 | 2520-201 | 5/16-18 HEXT NUT | 4 |
| 21 | 2520-251 | 3/8-16 HEX NUT | 10 |
| 22 | 2520-357 | 1/2-13 LOCK HEX NUT GRADE 2 | 18 |
| 23 | 2520-540 | 7/8-9 LOCK HEX NUT | 1 |
| 24 | 2526-201 | 5/16 FLAT WASHER | 4 |
| 25 | 2533-110 | 1/4-28 LUBE FITTING SELF-TAP | 6 |
| 26 | 2565-162 | YETTER DECAL | 1 |
| 27 | 2565-466 | IDENTIFICATION PLATE | 1 |
| 28 | 2565-496 | "GREASE WEEKLY" DECAL | 5 |
| 29 | 2565-497 | "OIL DAILY" DECAL | 2 |
| 30 | 2565-498 | ALLSTEER DECAL | 3 |
| 31 | 2565-499 | ALLSTEER TANK DECAL | 2 |
| 32 | 2565-813 | YELLOW REFLECTOR DECAL | 2 |
| 33 | 2570-511 | 3/8-16 X 6 "J" BOLT | 10 |
| 34 | 2570-775 | 5/16-18 X 3.75 HOOK BOLT | 4 |

MANUFACTURED 02-08 TO PRESENT

PARTS IDENTIFICATION **2000 GALLON LEG TANK**



MANUFACTURED 08-07 TO 04-11

PARTS IDENTIFICATION

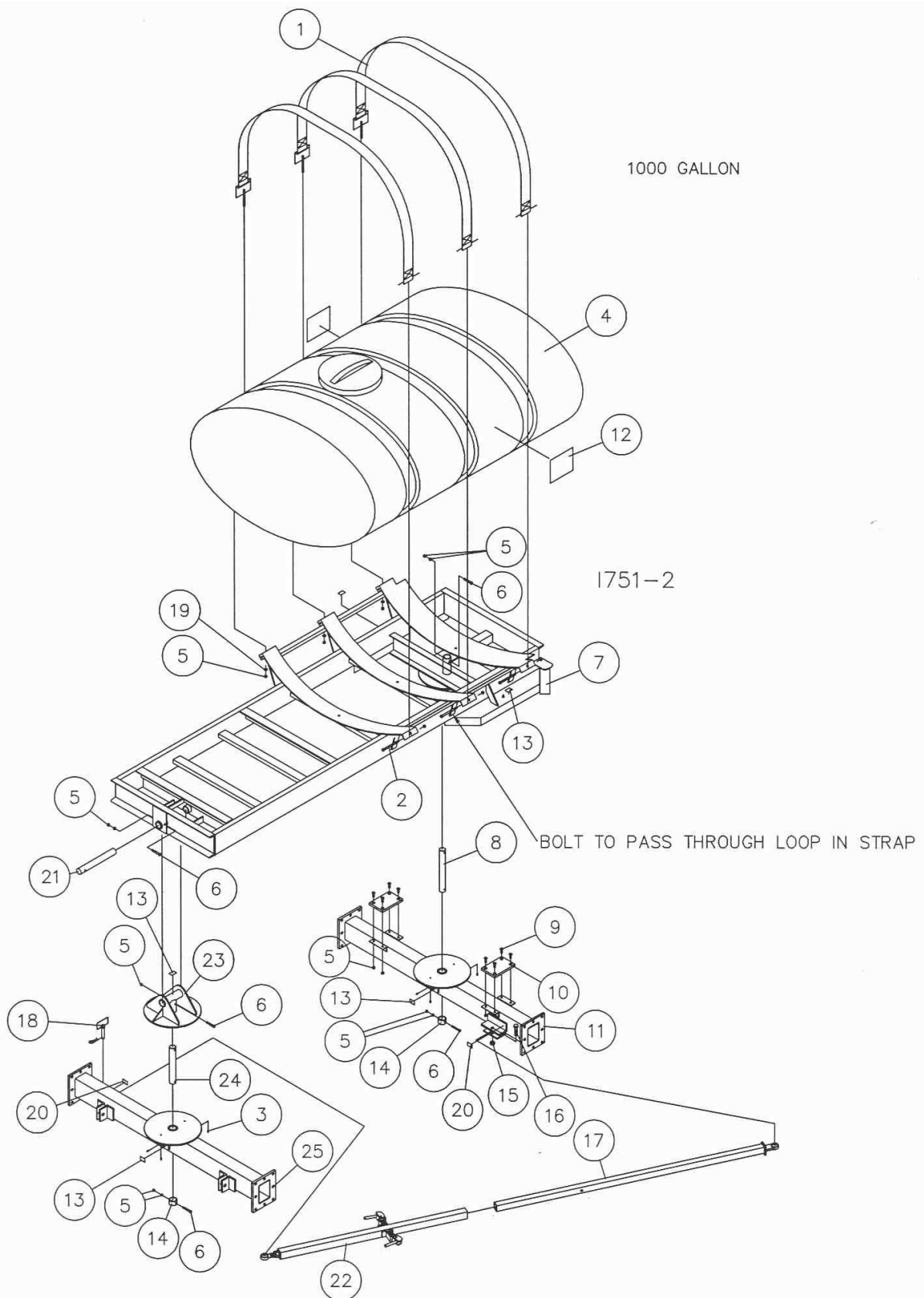
2000 GALLON

| DET | QTY | PART NO. | DESCRIPTION |
|-----|-----|----------------|---|
| 1 | 4 | 2000-487 | BAND, 2035 GAL. LEG TANK |
| 2 | 16 | 2502-346 | 1/2-13 X 2 FULL THD HHCS GR 5 |
| | 1 | 2515-725 | 2035 GAL. POLY TANK, YELLOW (GREEN ONLY) |
| 3 | 1 | 2515-724 | 2035 GAL. POLY TANK, WHITE (BLACK & BLUE) |
| 4 | 34 | 2520-357 | 1/2-13 LOCK HEX NUT ZP |
| 5 | 5 | 2502-316 | 1/2-13 X 3-1/2 HHCS GR. 5 ZP |
| * | 6 | 2000-265-BLACK | 2000 GAL. FRAME W.A., BLACK |
| 7 | 1 | 2000-317 | REAR PIVOT PIN ZYD. |
| 8 | 8 | 2503-352 | 1/2-13 X 1 1/2 FHS HCS ZP |
| 9 | 2 | 2000-318 | POLY WEAR PAD |
| * | 10 | 2000-280-BLACK | REAR AXLE WA BLACK |
| 11 | 2 | 2000-319 | PIVOT COLLAR ZYD. |
| 12 | 1 | 2520-540 | 7/8-9 LOCK HEX NUT ZP |
| 13 | 1 | 2502-606 | 7/8-9 X 3 HHCS GR5 ZP |
| 14 | 1 | 2000-204 | INNER LINKAGE W.A. |
| 15 | 1 | 2000-108 | LINKAGE SUB-ASS'Y |
| * | 16 | 2000-278-BLACK | FRONT AXLE WA BLACK |
| 17 | 1 | 2000-320 | FRONT PIVOT PIN ZYD. |
| 18 | 1 | 2000-208 | COMPOUND PIVOT W.A. |
| 19 | 1 | 2000-321 | UPPER PIVOT PIN ZYD. |
| | 3 | 2565-473 | ALL STEER DECAL, YELLOW(2000-010-GREEN) |
| 20 | 3 | 2565-498 | ALL STEER DECAL |
| | 1 | 2565-698 | YETTER DECAL, 1.5X4.5, YELLOW(-GREEN) |
| 21 | 1 | 2565-162 | YETTER DECAL, 1-1/2 X 4-1/2 |
| 22 | 1 | 2565-466 | SERIAL NUMBER DECAL |
| 23 | 2 | 2565-813 | USE JD5921 AMBER REFLECTOR |
| 24 | 2 | 2565-497 | 'OIL DAILY' DECAL |
| 25 | 1 | 2000-101 | HITCH PIN ASSY, SLOAN #006003 |
| 26 | 5 | 2565-496 | 'GREASE WEEKLY' DECAL |
| 27 | 2 | 2565-499 | ALL STEER TANK DECAL |
| 28 | 6 | 2533-110 | 1/4-28 ZERK STRAIGHT SELF-TAP |

* SUBSTITUTE -BLUE AND -GREEN FOR BLUE AND GREEN MODELS

MANUFACTURED 08-07 TO 04-11

PARTS IDENTIFICATION



MANUFACTURED 08-07 TO 01-08

PARTS IDENTIFICATION

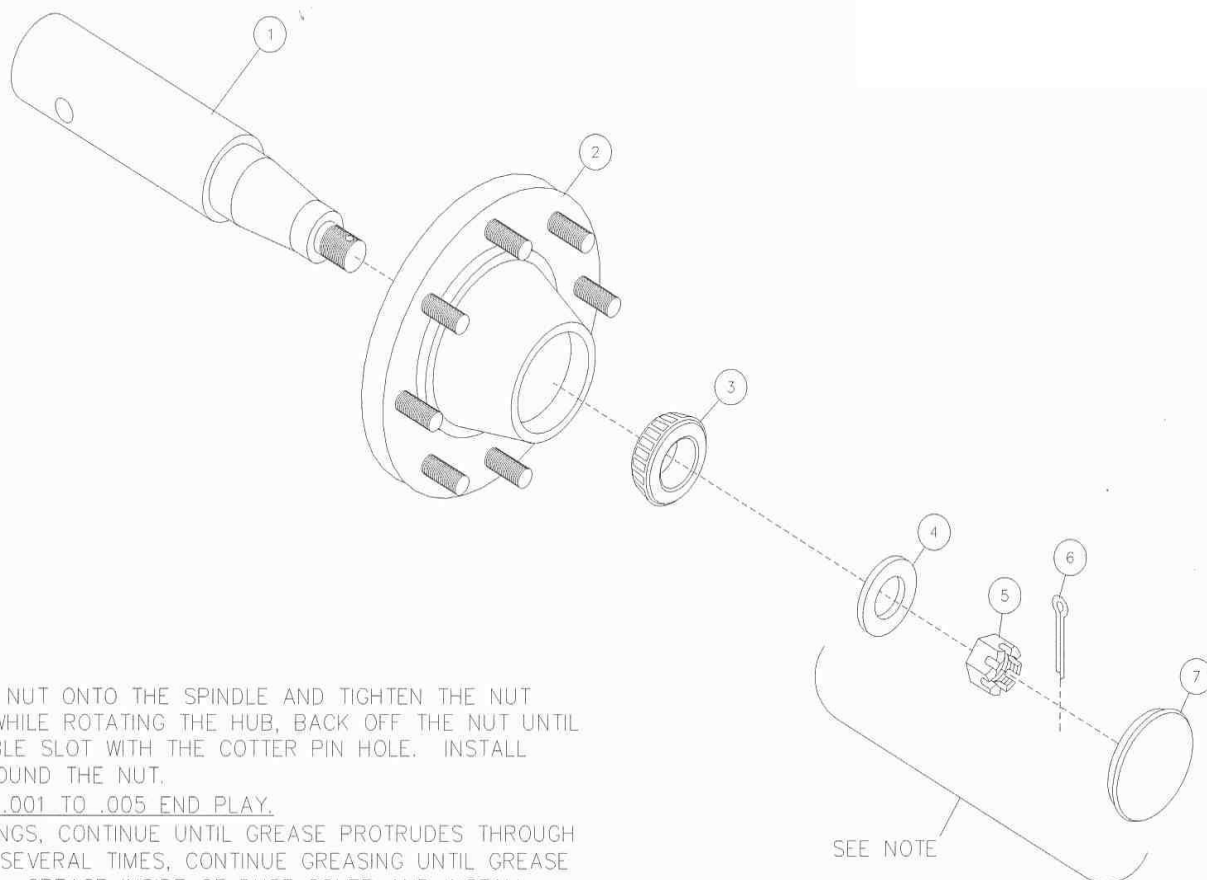
1000 GALLON

| DET | QTY | PART NO. | DESCRIPTION |
|------|-----|----------------|---|
| 1 | 3 | 2000-109 | STRAP ASSEMBLY |
| 2 | 3 | 2502-370 | 1/2-13 X 7-1/2 HHCS GR 5 ZYD |
| 3 | 6 | 2533-110 | 1/4-28 ZERK STRAIGHT SELF-TAP |
| | 1 | 2515-715 | 1000 GAL. POLY TANK, YELLOW (GREEN ONLY) |
| 4 | 1 | 2515-716 | 1000 GAL. POLY TANK, WHITE (BLACK & BLUE) |
| 5 | 24 | 2520-357 | 1/2-13 LOCK HEX NUT ZP |
| 6 | 5 | 2502-316 | 1/2-13 X 3-1/2 HHCS GR. 5 ZP |
| * 7 | 1 | 2000-227-BLACK | FRAME W/CROSSMEMBER WA, BLACK |
| 8 | 1 | 2000-317 | REAR PIVOT PIN ZYD. |
| 9 | 8 | 2503-352 | 1/2-13 X 1 1/2 FSHCS ZP |
| 10 | 2 | 2000-318 | POLY WEAR PAD |
| * 11 | 1 | 2000-280-BLACK | REAR AXLE WA BLACK |
| 12 | 2 | 2565-499 | ALL STEER TANK DECAL |
| 13 | 5 | 2565-496 | 'GREASE WEEKLY' DECAL |
| * 14 | 2 | 2000-319 | PIVOT COLLAR ZYD. |
| 15 | 1 | 2520-540 | 7/8-9 LOCK HEX NUT ZP |
| 16 | 1 | 2502-606 | 7/8-9 X 3 HHCS GR5 ZP |
| 17 | 1 | 2000-204 | INNER LINKAGE W.A. |
| 18 | 1 | 2000-101 | HITCH PIN ASSY, SLOAN #006003 |
| 19 | 3 | 2526-352 | 1/2 SAE FLATWASHER ZP |
| 20 | 2 | 2565-497 | 'OIL DAILY' DECAL |
| 21 | 1 | 2000-321 | UPPER PIVOT PIN ZYD. |
| 22 | 1 | 2000-108 | LINKAGE SUB-ASS'Y |
| 23 | 1 | 2000-208 | COMPOUND PIVOT W.A. |
| 24 | 1 | 2000-320 | FRONT PIVOT PIN ZYD. |
| * 25 | 1 | 2000-278-BLACK | FRONT AXLE WA BLACK |

*SUBSTITUTE -BLUE AND -GREEN FOR BLUE AND GREEN MODELS

MANUFACTURED 08-07 TO 01-08

PARTS IDENTIFICATION



NOTE:

ASSEMBLE THE WASHER AND NUT ONTO THE SPINDLE AND TIGHTEN THE NUT TO 15-20 FOOT-POUNDS. WHILE ROTATING THE HUB, BACK OFF THE NUT UNTIL IT ALIGNS THE NEXT AVAILABLE SLOT WITH THE COTTER PIN HOLE. INSTALL COTTER PIN & BEND PIN AROUND THE NUT.

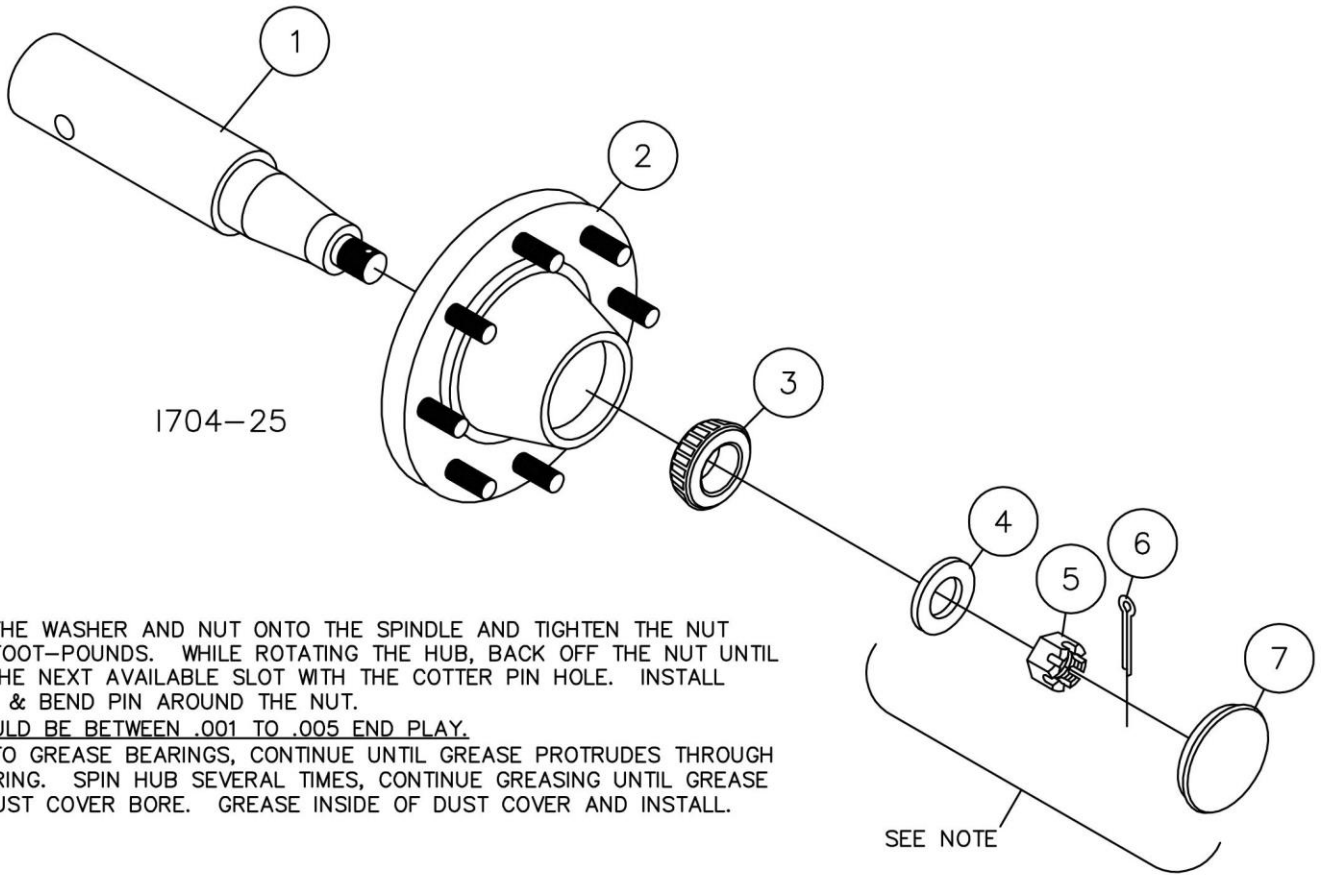
THERE SHOULD BE BETWEEN .001 TO .005 END PLAY.

USE ZERK TO GREASE BEARINGS, CONTINUE UNTIL GREASE PROTRUDES THROUGH OUTER BEARING. SPIN HUB SEVERAL TIMES, CONTINUE GREASING UNTIL GREASE REACHES DUST COVER BORE. GREASE INSIDE OF DUST COVER AND INSTALL.

2000-166

| DET | QTY | PART NO. | DESCRIPTION |
|-----|-----|----------|-------------------------------|
| 1 | 1 | 2000-533 | SPINDLE, CROSS-DRILLED 2-3/4" |
| 2 | 1 | 2000-162 | HUB ASSEMBLY, ALL STEER |
| 3 | 1 | 2550-064 | OUTER BEARING #N910273 |
| 4 | 1 | 2526-549 | SPINDLE WASHER #913624 |
| 5 | 1 | 2520-567 | 1-14 UNS CASTLE NUT CTD #WB33 |
| 6 | 1 | 2531-128 | COTTER PIN #N905941 |
| 7 | 1 | 2550-065 | DUST CAP #909912 |

PARTS IDENTIFICATION



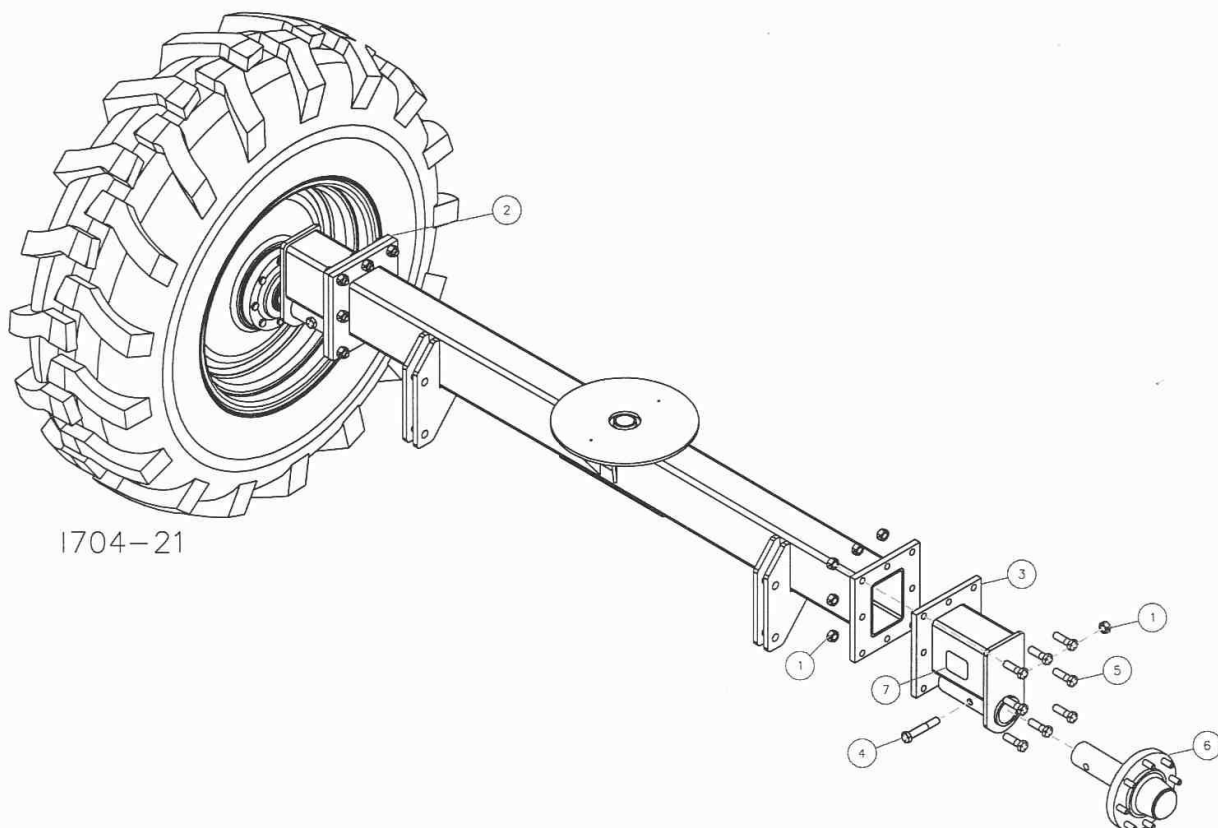
NOTE:
 ASSEMBLE THE WASHER AND NUT ONTO THE SPINDLE AND TIGHTEN THE NUT TO 15-20 FOOT-POUNDS. WHILE ROTATING THE HUB, BACK OFF THE NUT UNTIL IT ALIGNS THE NEXT AVAILABLE SLOT WITH THE COTTER PIN HOLE. INSTALL COTTER PIN & BEND PIN AROUND THE NUT.
THERE SHOULD BE BETWEEN .001 TO .005 END PLAY.
 USE ZERK TO GREASE BEARINGS, CONTINUE UNTIL GREASE PROTRUDES THROUGH OUTER BEARING. SPIN HUB SEVERAL TIMES, CONTINUE GREASING UNTIL GREASE REACHES DUST COVER BORE. GREASE INSIDE OF DUST COVER AND INSTALL.

2000-157 - 75-8 HUB ASSEMBLY

| DET | QTY | PART NO. | DESCRIPTION |
|-----|-----|----------|------------------------------|
| 1 | 1 | 2000-535 | SPINDLE, CROSS-DRILLED 3" |
| 2 | 1 | 2000-156 | 75-8 HUB SUB ASSEMBLY |
| 3 | 1 | 2550-064 | OUTER BEARING #N910273 |
| 4 | 1 | 2526-549 | SPINDLE WASHER #913624 |
| 5 | 1 | 2520-567 | 1-14 UNS CASTLE NUT CTD#WB33 |
| 6 | 1 | 2531-128 | COTTER PIN #N905941 |
| 7 | 1 | 2550-065 | DUST CAP #N909912 |

12-09 TO PRESENT

PARTS IDENTIFICATION

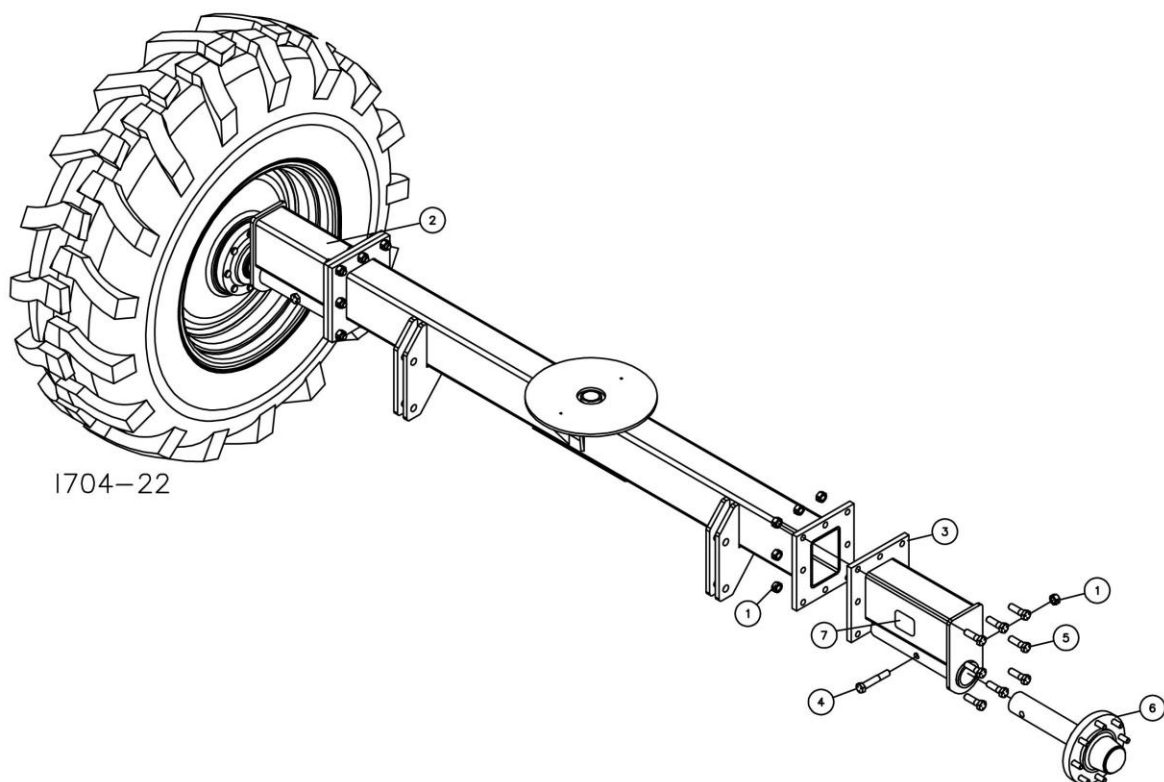


| DET | QTY | PART NO. | DESCRIPTION |
|-----|-----|----------|------------------------------|
| 1 | 36 | 2520-515 | 3/4-10 LOCK HEX NUT ZP |
| 2 | 2 | 2000-283 | 120" AXLE STUB, RH |
| 3 | 2 | 2000-282 | 120" AXLE STUB, LH |
| 4 | 4 | 2502-406 | 3/4-10 X 4-1/2 HHCS GR. 5 |
| 5 | 32 | 2502-407 | 3/4-10 X 2-1/2 HHCS GR. 5 ZP |
| 6 | 4 | 2000-166 | HUB ASSEMBLY |
| 7 | 1 | 2565-803 | AMBER REFLECTOR |

NOTE: THE LEFT FRONT STUB AXLE HAS THE AMBER REFLECTOR DECAL.

8-07 TO 11-09

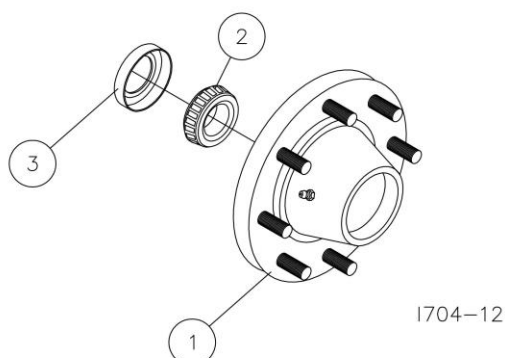
PARTS IDENTIFICATION



| DET | QTY | PART NO. | DESCRIPTION |
|-----|-----|----------|--------------------------------|
| 1 | 36 | 2520-515 | 3/4-10 LOCK HEX NUT ZP |
| 2 | 2 | 2000-226 | 120"STUB AXLE WA, RH, 16" LONG |
| 3 | 2 | 2000-281 | 120"STUB AXLE WA, LH, 16" LONG |
| 4 | 4 | 2502-406 | 3/4-10 X 4-1/2 HHCS GR. 5 |
| 5 | 32 | 2502-407 | 3/4-10 X 2-1/2 HHCS GR. 5 ZP |
| 6 | 4 | 2000-157 | 75-8 HUB ASSEMBLY |
| 7 | 1 | 2565-803 | AMBER REFLECTOR |

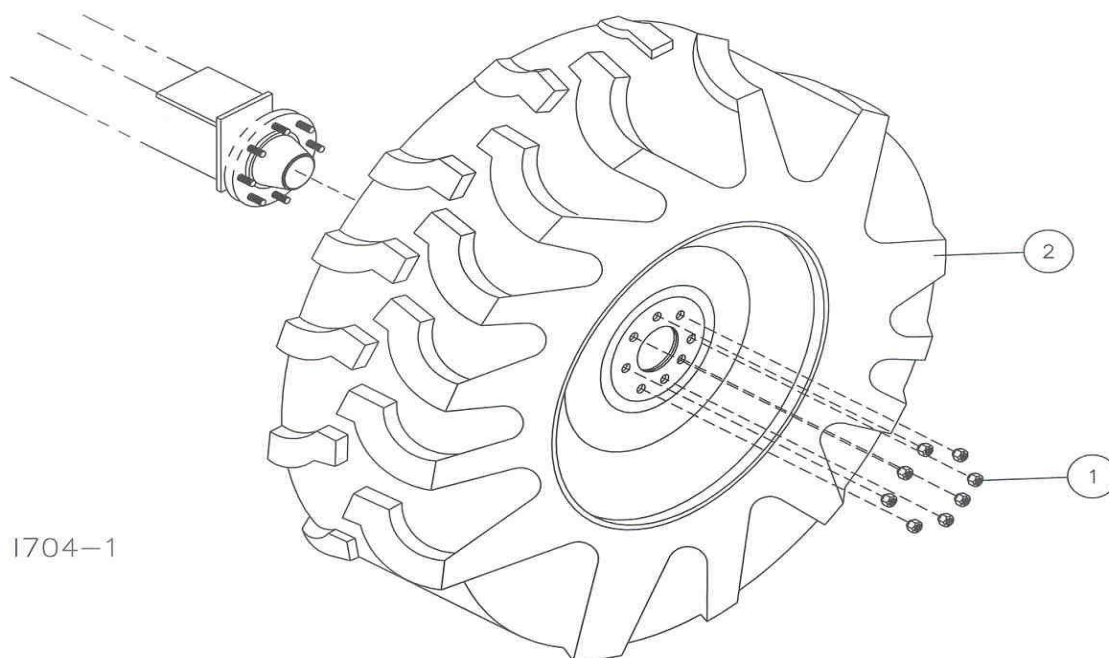
12/09-PRESENT

PARTS IDENTIFICATION



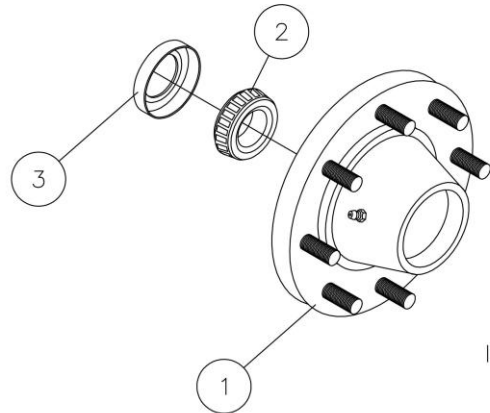
| DET | QTY | PART NO. | DESCRIPTION |
|-----|-----|----------|--------------------------------|
| 1 | 1 | 2000-322 | 60-8 HUB ASSEMBLY |
| | 8 | 2000-384 | 5/8-18 X 2-1/2 STUD |
| | 1 | | INNER CUP JLM506810 |
| | 1 | | OUTER CUP JLM501310 |
| | 1 | | GREASE FITTING #1720-B |
| 2 | 1 | 2550-063 | INNER BEARING 2-3/4"ID #906486 |
| 3 | 1 | 2550-026 | GREASE SEAL |

NOTE: CAST HUB CANNOT BE ORDERED SEPARATE, ONLY ITEMS ASSEMBLED TO HUB CAN BE PURCHASED INDIVIDUALLY.
PART NUMBERS LISTED UNDER 2000-322 ARE MANUFACTURERS' REPLACEMENT NUMBERS – NOT YETTER NUMBERS.



| DET | QTY | PART NO. | DESCRIPTION |
|-----|-----|----------|--------------------------------|
| 1 | 1 | 2520-370 | WHEEL NUT #N913557 |
| 2 | 2 | 2000-102 | 18.4 X 26-10 TIRE/WHL-WHITE,RH |
| | 2 | 2000-103 | 18.4 X 26-10 TIRE/WHL-BLACK,LH |
| | 2 | 2000-105 | 18.4 X 26-10 TIRE/WHL-WHITE,LH |
| | 2 | 2000-106 | 18.4 X 26-10 TIRE/WHL-BLACK,RH |

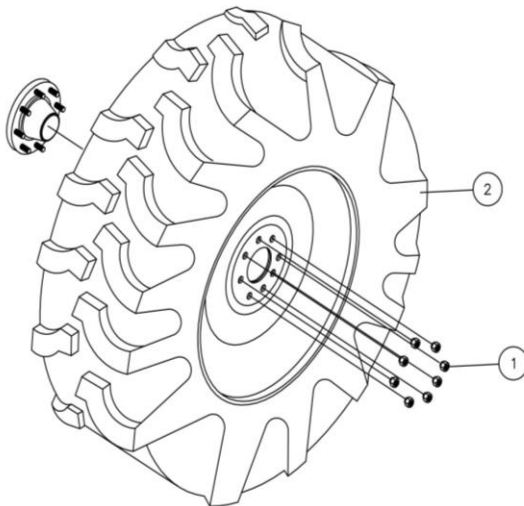
PARTS IDENTIFICATION



1704-24

| DET | QTY | PART NO. | DESCRIPTION |
|-----|-----|----------|---------------------------|
| 1 | 1 | 2000-156 | 75-8 HUB SUB ASSEMBLY |
| | 8 | 2000-384 | 5/8-18 X 2-1/2 STUD |
| | 1 | | INNER CUP 382A/910358 |
| | 1 | | OUTER CUP LM501310 |
| | 1 | | GREASE FITTING #1720-B |
| 2 | 1 | 2550-068 | INNER BEARING #N910359 |
| 3 | 1 | 2550-067 | GREASE SEAL 3"ID #N946486 |

12/09-PRESENT



1704-23

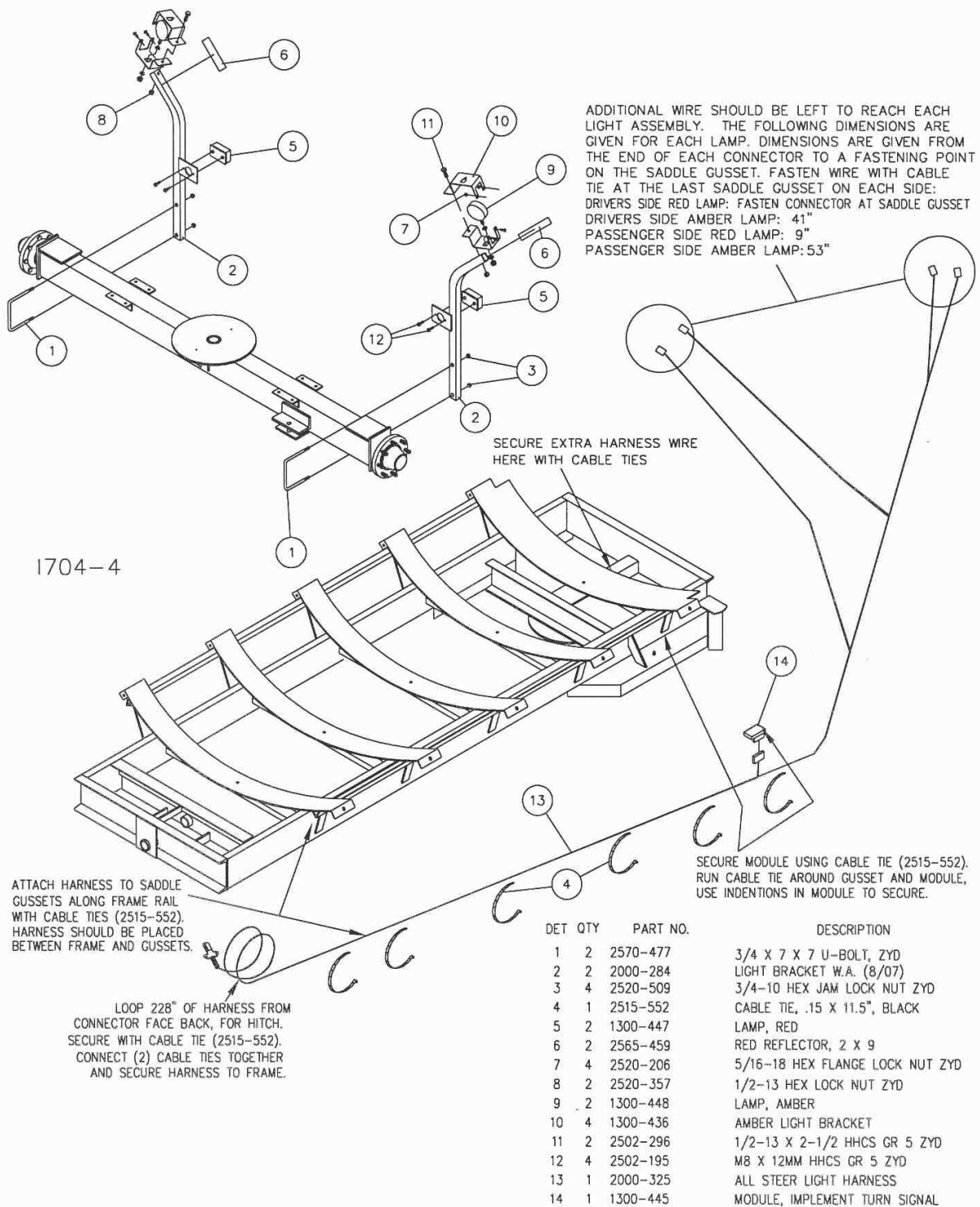
| DET | QTY | PART NO. | DESCRIPTION |
|-----|-----|----------|--------------------------------|
| 1 | 1 | 2520-370 | WHEEL NUT #N913557 |
| 2 | 2 | 2000-148 | 18.4X26-10TIRE/WHL-YEL,RH,1.38 |
| | 2 | 2000-149 | 18.4X26-10TIRE/WHL-YEL,LH,1.38 |
| | 2 | 2000-151 | 18.4X26-10TIRE/WHL-WHT,LH,1.38 |
| | 2 | 2000-152 | 18.4X26-10TIRE/WHL-WHT,RH,1.38 |
| | 2 | 2000-153 | 18.4X26-10TIRE/WHL-BLK,LH,1.38 |
| | 2 | 2000-154 | 18.4X26-10TIRE/WHL-BLK,RH,1.38 |



| ITEM | PART NO. | DESCRIPTION | QTY. |
|------|----------|---------------------|------|
| 1 | 2000-153 | RH MUCK MASTER TIRE | 2 |
| | 2000-154 | LH MUCK MASTER TIRE | 2 |
| | | 750/60R26 173A8 | |

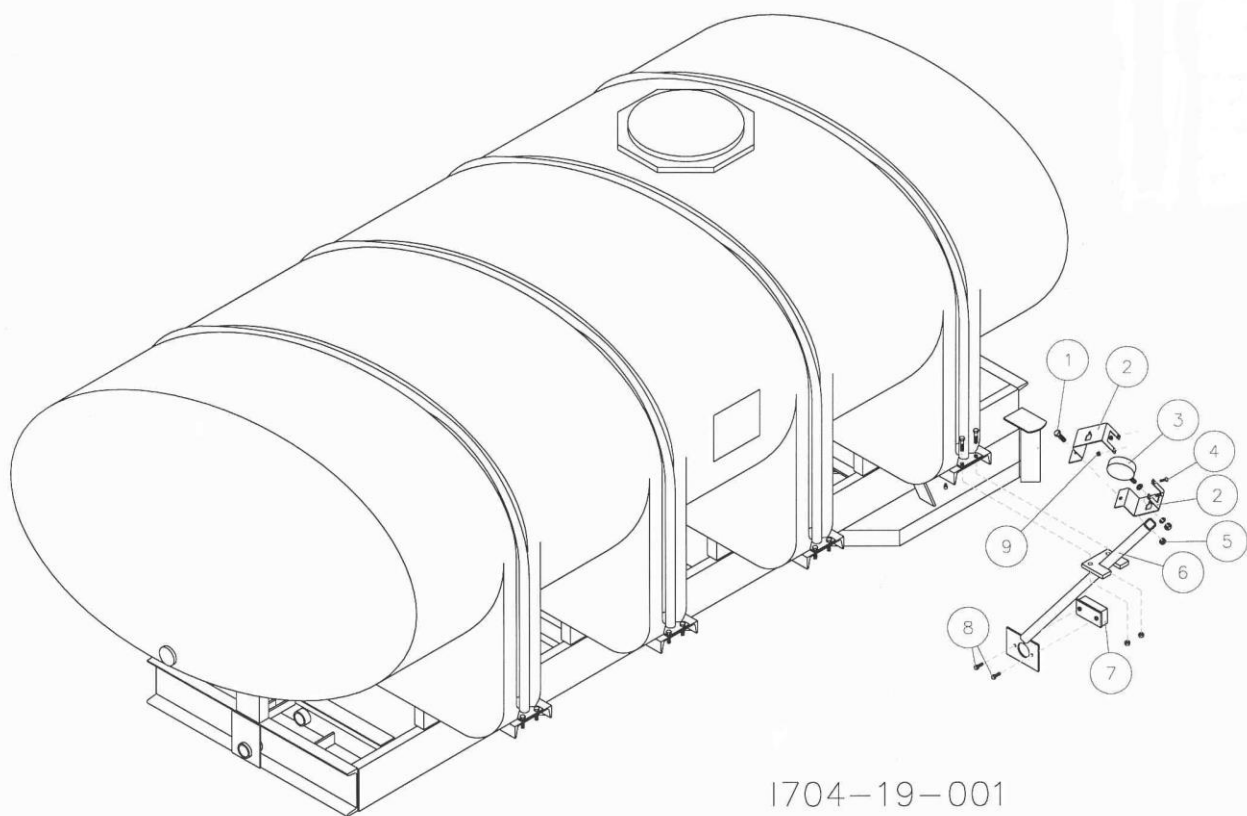
12/09-PRESENT

PARTS IDENTIFICATION



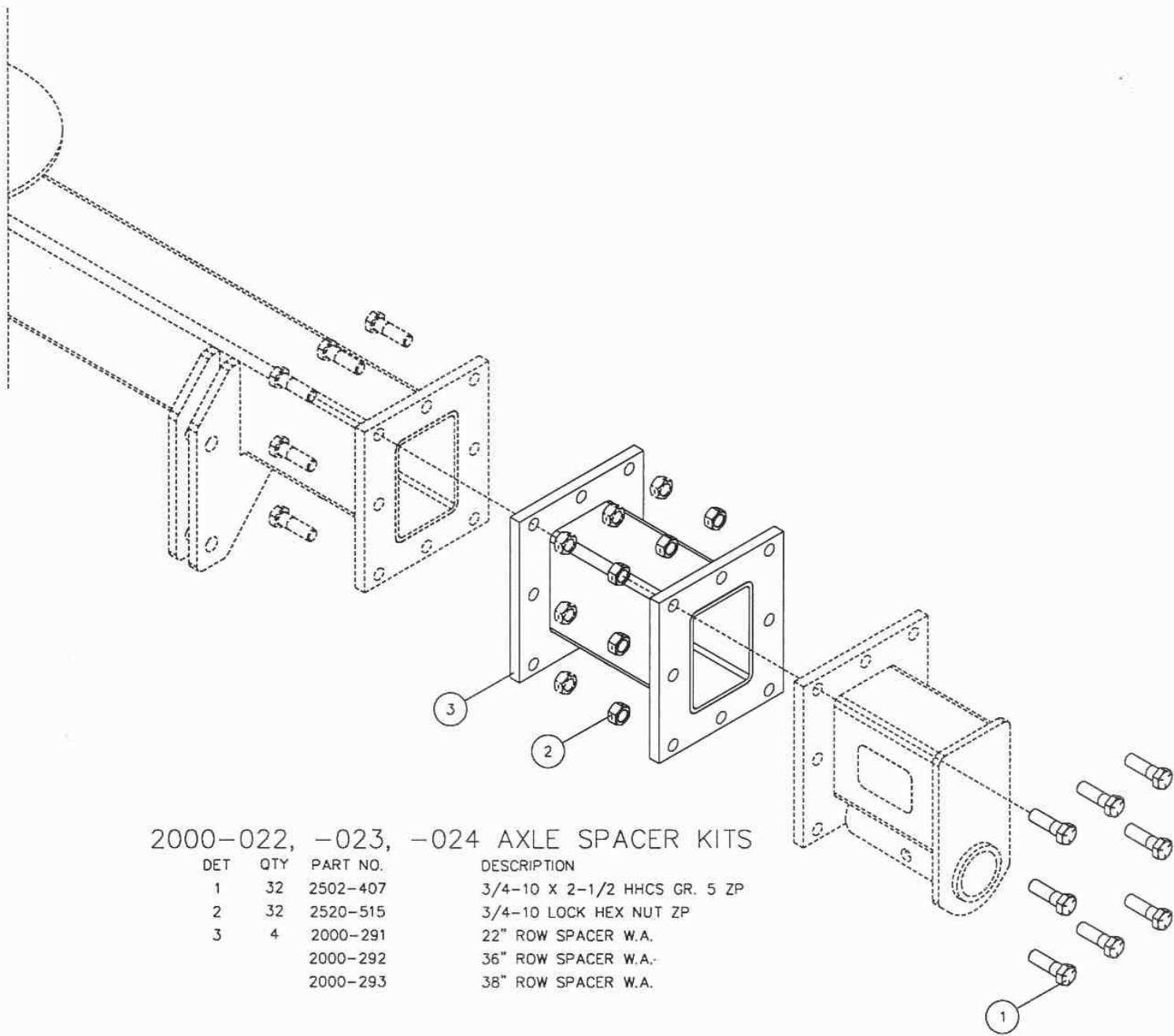
UPDATED 02/2009

PARTS IDENTIFICATION



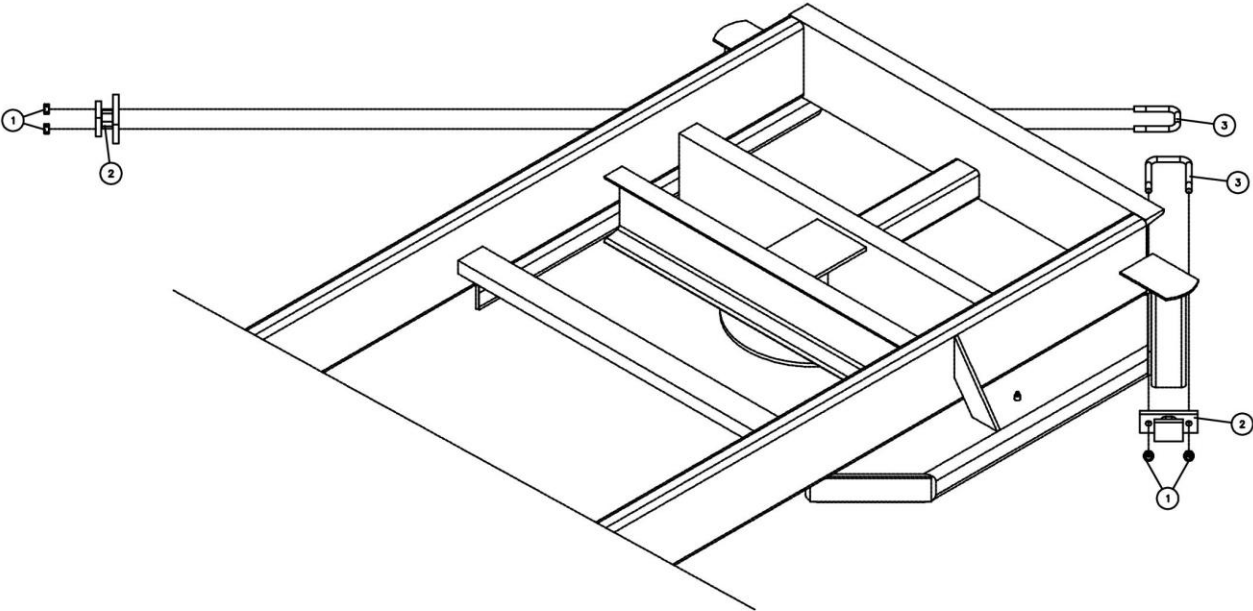
| DET | QTY | PART NO. | DESCRIPTION |
|-----|-----|----------|----------------------------------|
| 1 | 2 | 2502-296 | 1/2-13 X 2-1/2 HHCS GR 5 ZYD |
| 2 | 4 | 1300-436 | AMBER LIGHT BRACKET |
| 3 | 2 | 1300-448 | LAMP, AMBER |
| 4 | 4 | 2505-205 | 5/16-18 X 3/4 CAR BOLT GR5 |
| 5 | 2 | 2520-357 | 1/2-13 LOCK HEX NUT ZP |
| 6 | 1 | 2000-267 | LIGHT BRKT WA, 2000 (1) TANK, LH |
| | 1 | 2000-266 | LIGHT BRKT WA, 2000 (1) TANK, RH |
| 7 | 1 | 1300-447 | LAMP, RED |
| 8 | 4 | 2502-195 | M8 X 12MM HHCS GR 5 ZYD |
| 9 | 4 | 2520-206 | 5/16-18 FLANGE LOCK NUT |

PARTS IDENTIFICATION



1765-1

PARTS IDENTIFICATION

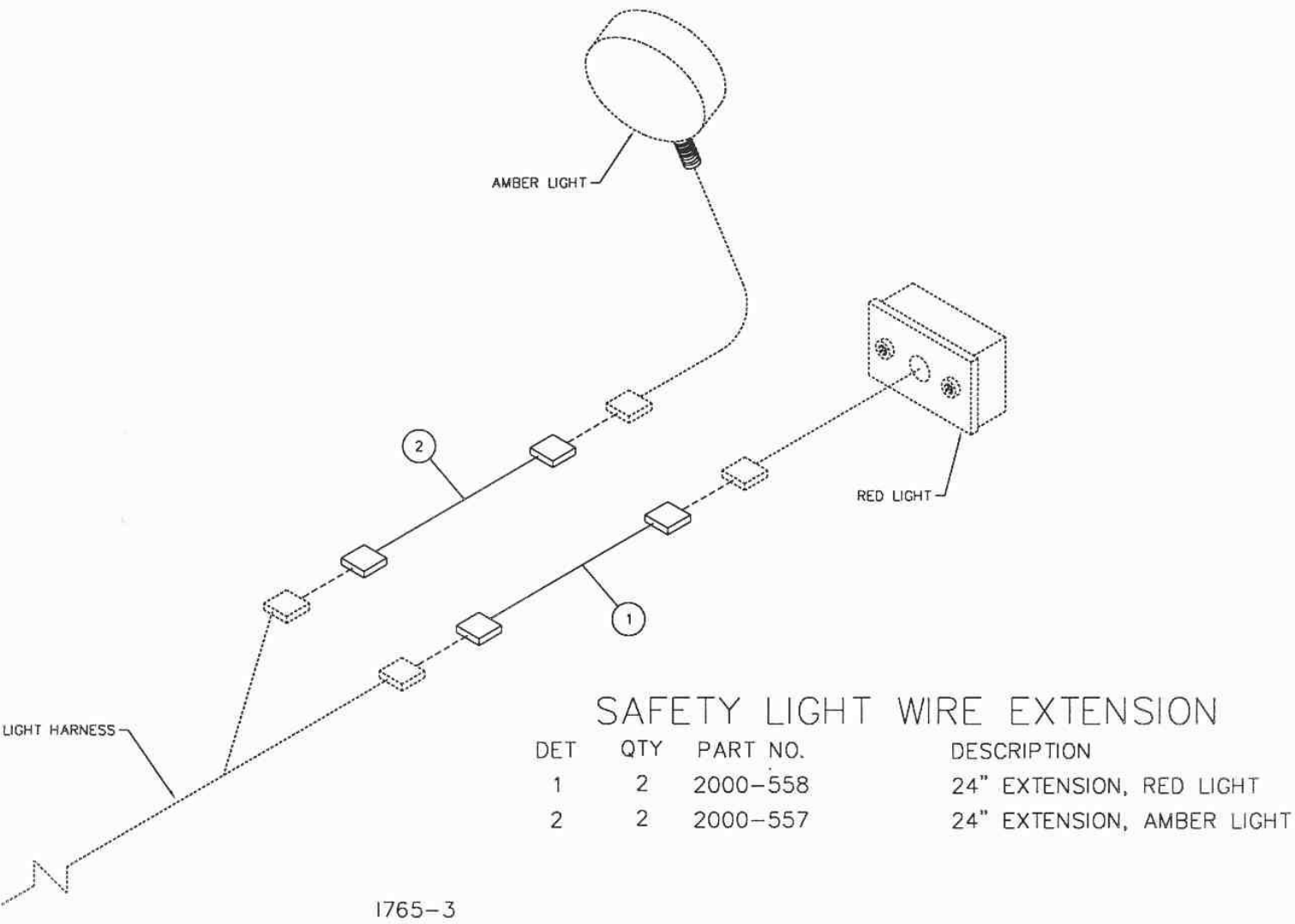


AXLE STOPS

| DET | QTY | PART NO. | DESCRIPTION |
|-----|-----|----------|------------------------|
| 1 | 4 | 2520-357 | 1/2-13 LOCK HEX NUT ZP |
| 2 | 2 | 2000-295 | SHORT AXLE STOP W.A. |
| 3 | 2 | 2570-777 | .5 X 3 X 4.5 U-BOLT |

I765-2

PARTS IDENTIFICATION



NOTES:

NOTES:



A Tradition of Solutions since 1930

Yetter Farm Equipment Co

PO BOX 358 109 S. McDonough

Colchester, IL 62326-0358

Phone: 309-776-4111

Toll Free: 800-447-5777

Email: info@yetterco.com

For updated models and manuals visit the Yetter website:

www.yetterco.com

© Yetter Farm Equipment Co. All Rights Reserved

2565-726_REV_E - 12/23