



**2966-002**  
**RESIDUE MANAGER**  
**FOR 60/90 AIR SEEDER OPENER**

**OPERATOR'S MANUAL**  
**PART IDENTIFICATION**



2565-759\_REV\_G • 02/16

**YETTER MANUFACTURING CO.**  
*FOUNDED 1930*

Colchester, IL 62326-0358  
Toll free: 800/447-5777  
309/776-3222 (Fax)  
Website: [www.yetterco.com](http://www.yetterco.com)  
E-mail: [info@yetterco.com](mailto:info@yetterco.com)

**YETTER**

## FOREWORD

You've just joined an exclusive but rapidly growing club.

For our part, we want to welcome you to the group and thank you for buying a Yetter product.

We hope your new Yetter products will help you achieve both goals-increase your productivity and increase your efficiency so that you may generate more profit.

This operator's manual has been designed into four major sections: Foreword, Safety Precautions, Installation Instructions and Parts Breakdown.



This **SAFETY ALERT SYMBOL** indicates important safety messages in the manual. When you see this symbol, be alert to the possibility of **PERSONAL INJURY** and carefully read the message that follows.

The word **NOTE** is used to convey information that is out of context with the manual text. It contains special information such as specifications, techniques and reference information of a supplementary nature.

The word **IMPORTANT** is used in the text when immediate damage will occur to the machine due

to improper technique or operation. Important will apply to the same information as specified by note only of an immediate and urgent nature.

It is the responsibility of the user to read the operator's manual and comply with the safe and correct operating procedure and to lubricate and maintain the product according to the maintenance schedule in the operator's manual.

The user is responsible for inspecting his machine and for having parts repaired or replaced when continued use of the product would cause damage or excessive wear to the other parts.

It is the user's responsibility to deliver his machine to the Yetter dealer who sold him the product for service or replacement of defective parts, which are covered by the warranty policy.

If you are unable to understand or follow the instructions provided in this publication, consult your local Yetter dealer or contact:

### **YETTER MANUFACTURING CO.**

309/776-4111

800/447-5777

309/776-3222 (FAX)

Website: [www.yetterco.com](http://www.yetterco.com)

E-mail: [info@yetterco.com](mailto:info@yetterco.com)

## WARRANTY

Yetter Manufacturing warrants all products manufactured and sold by it against defects in material. This warranty being expressly limited to replacement at the factory of such parts or products as shall appear to be defective after inspection. This warranty does not obligate the Company to bear cost of labor in replacement of parts. It is the policy of the Company to make improvements without incurring obligations to add them to any unit already sold. No warranty is made or authorized to be made, other than herein set forth. This warranty is in effect for one year after purchase.

DEALER: \_\_\_\_\_

**Yetter Manufacturing warrants its own products only and cannot be responsible for damages to equipment on which mounted.**

# SAFETY

**A brief description of signal words that may be used in this manual:**

**CAUTION:** Used as a general reminder of good safety practices or to direct attention to unsafe practices.

**WARNING:** Denotes a specific potential hazard.

**DANGER:** Denotes the most serious specific potential hazard.

## SAFETY PRECAUTIONS

You can make your farm a safer place to live and work if you observe the safety precautions given. Study these precautions carefully and insist that those working with you and for you follow them.

Finally, remember this: an accident is usually caused by someone's carelessness, neglect or oversight.



### WARNING

Never clean, lubricate or adjust a machine that is in motion. Always lower or block the implement before performing service.

If the machine must be serviced in the raised position, jack or block it up to prevent it from accidentally falling and injuring someone.

Do not allow riders on the tractor or implement.

Use speeds and caution dictated by the terrain being traversed. Do not operate on any slope steep enough to cause tipping or loss of control.

Be sure all personnel are clear of the immediate area before operating.

Read and understand the operator's manual and require all other persons who will operate the equipment to do the same.

Be familiar with all tractor and implement controls and be prepared to stop engine and implements quickly in an emergency.



### CAUTION

Consult your implement and tractor operator's manual for correct and safe operating practices.

Beware of towed implement width and allow safe clearance.

**FAILURE TO HEED MAY RESULT IN PERSONAL INJURY OR DEATH.**

## BOLT TORQUE

### Mounting bolts and hardware

Before operating the Residue Manager for the first time, check to be sure that all hardware is tight. Check all hardware again after approximately 50 hours of operation and at the beginning of each planting season.

All hardware used on the Residue Manager is Grade 5 unless otherwise noted. Grade 5 cap screws are marked with three radial lines on the head. If hardware must be replaced, be sure to replace it with hardware of equal size, strength and thread type. Refer to the torque values chart when tightening hardware.







**Important:** Over tightening hardware can cause as much damage as when under tightening. Tightening hardware beyond the recommended range can reduce its shock load capacity.

The chart below is a guide for proper torque. Use it unless a specified torque is called out elsewhere in the manual.

Torque is the force you apply to the wrench handle or the cheater bar, times the length of the handle or bar.

Use a torque wrench whenever possible.

The following table shows torque in ft. lbs. for coarse thread hardware.

BOLT DIA. AND THREADS PER INCH	 GRADE 2	 OR  GRADE 5 A-325	 GRADE 8
1/4	6	10	14
5/16	12	20	30
3/8 - 16	25	35	50
7/16 - 14	35	55	80
1/2 - 13	55	85	125
9/16 - 12	75	125	175
5/8 - 11	105	170	235
3/4 - 10	185	305	425
7/8 - 9	170	445	690
1-8	260	670	1030
1 1/8 - 7	365	900	1460
1 1/4 - 7	515	1275	2060
1 3/8 - 6	675	1675	2700
1 1/2 - 6	900	2150	3500
1 3/4 - 5	1410	3500	5600

Lubricate all bearings and moving parts as assembled and make certain that they work freely.



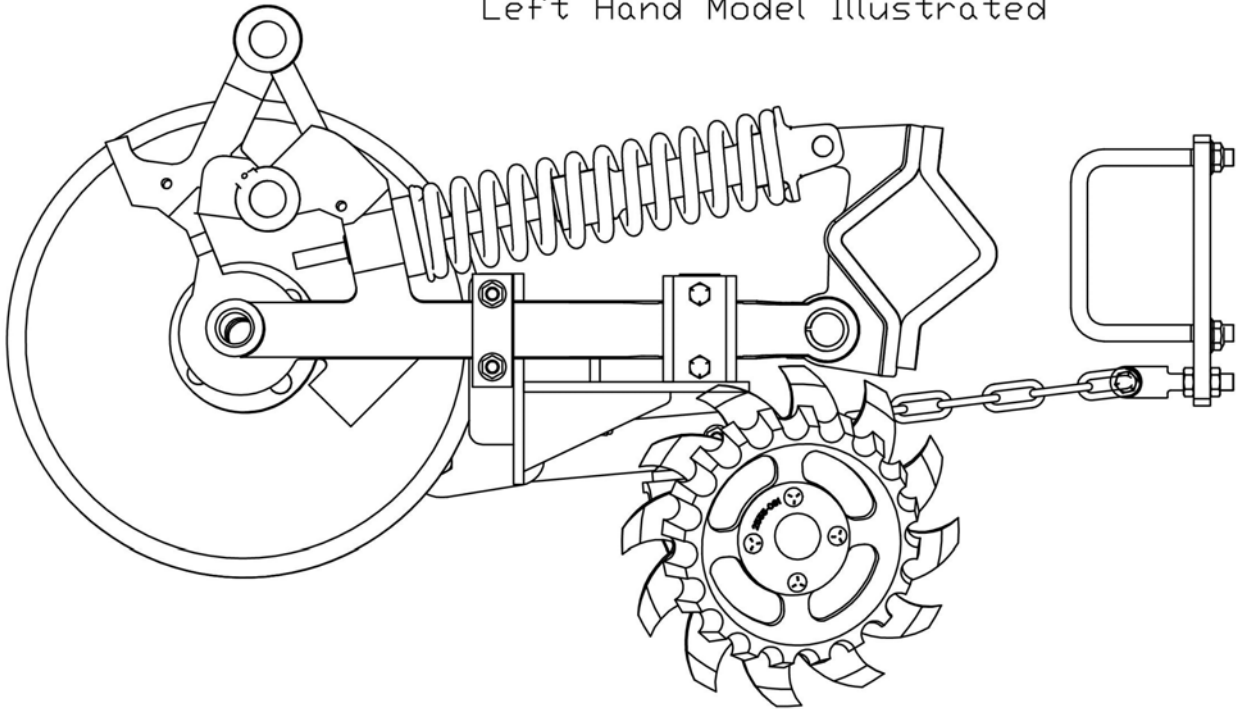
**WARNING:** Never work around the toolbar/implement while in a raised position without using safety lockups.



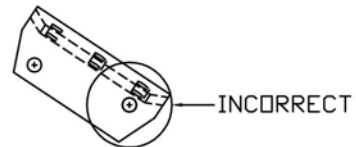
**CAUTION:** The Residue manager attachments are very heavy. Pay extra attention to lifting techniques while handling and or maneuvering the opener during assembly. Failure to do so may lead to personal injury.

# ASSEMBLY INSTRUCTIONS

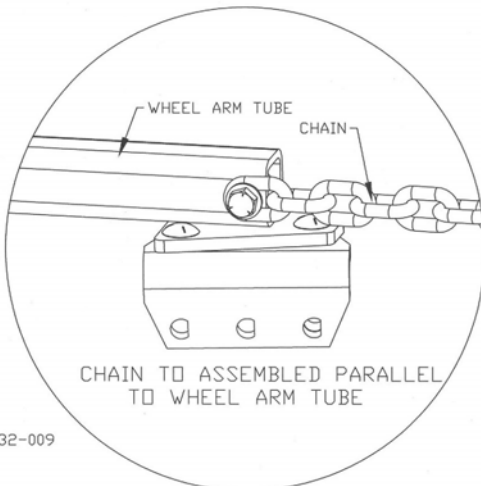
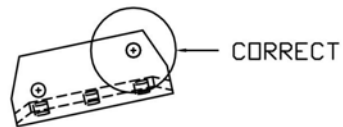
2966-002-L-STFW  
Left Hand Model Illustrated



I732-003



IMPORTANT:  
MOUNTING HOLE CLOSEST TO THE  
CORNER SHOULD ALWAYS BE TO  
THE FRONT.



I732-009

# OPERATING INSTRUCTIONS

## DEPTH

Remove spring locking pin and adjustment pin from the wheel support. Raise or lower the stem and wheel assembly so the teeth of the wheels are in solid contact with the residue and lightly touching the soil.

The function of the row cleaner is to sweep aside residue and not move soil. When using pre-plant incorporated herbicide, the row cleaner depth should be adjusted to minimize soil disturbance so the cleaner will not reduce the effectiveness of the incorporated herbicide.

## ROW CLEANER DO'S AND DON'TS

1. **DO NOT** move soil, Residue Managers are designed to move crop residue only.
2. **DO NOT** operate planter at slow speeds, ground speed affects how aggressive the spoke wheels are; operate at sufficient speed to maintain good residue flow.
3. **DO NOT** expect 100% of crop residue to be cleared, it is not necessary and would necessitate engaging the soil. The width of path cleared depends on ground conditions, depth setting and ground speed.
4. **DO** expect to see wheels occasionally quit turning, indicates ideal (shallow) setting which is not moving dirt.

# MAINTENANCE

## BEARING ASSEMBLY AND LUBRICATION

### Practice Safety

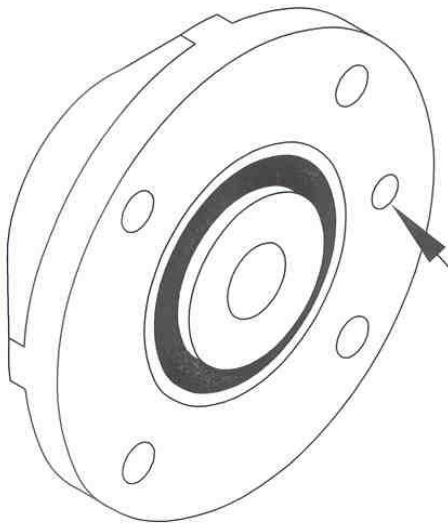
Understand and practice safe service procedures before doing work. Follow ALL the operating, maintenance and safety information in the equipment operator manual. Clear the area of bystanders, especially small children, when performing any maintenance or adjustments. Keep work area clean and dry. Use adequate lighting for the job. Use only tools, jacks and hoists of sufficient capacity for the job.

Never lubricate, service, or adjust machine while it is moving. Keep hands, feet, and clothing from power-driven moving and rotating parts. Disengage all power and operate controls to relieve pressure. Lower equipment to the ground and stop the engine. Remove the key. Wait for all moving parts to stop before servicing, adjusting, repairing or unplugging.

Securely support any machine elements with blocks or safety stands that must be raised for service work.

Keep all parts in good condition and properly installed. Fix damaged equipment immediately. Replace worn or broken parts. Remove any buildup of grease, oil, or debris. Make sure all guards are in place and properly secured when maintenance work is completed.

### Assembly

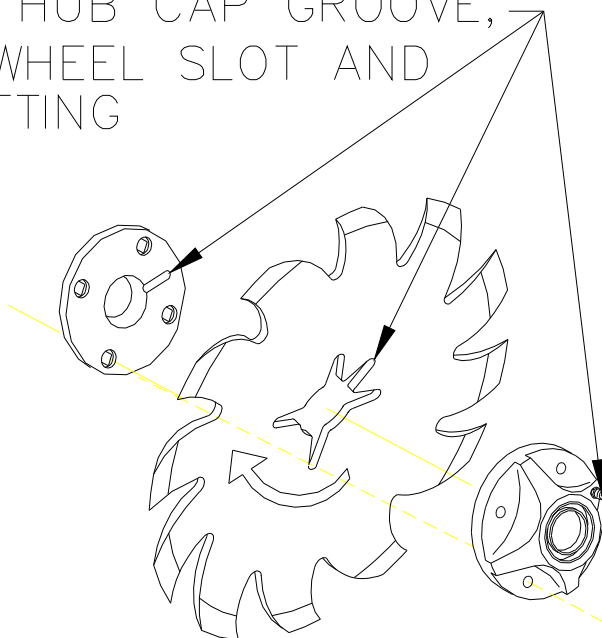


ALIGN GREASE  
FITTING HOLES.

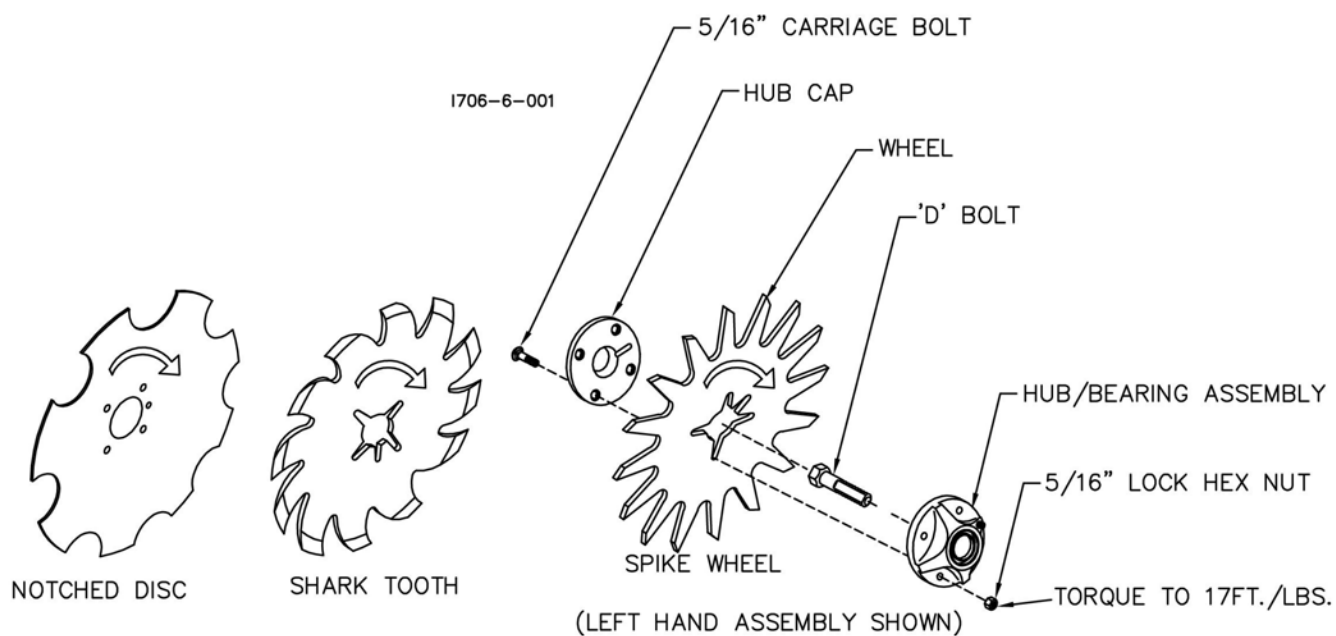
I190-1

## MAINTENANCE

ALIGN THE HUB CAP GROOVE,  
WITH THE WHEEL SLOT AND  
GREASE FITTING

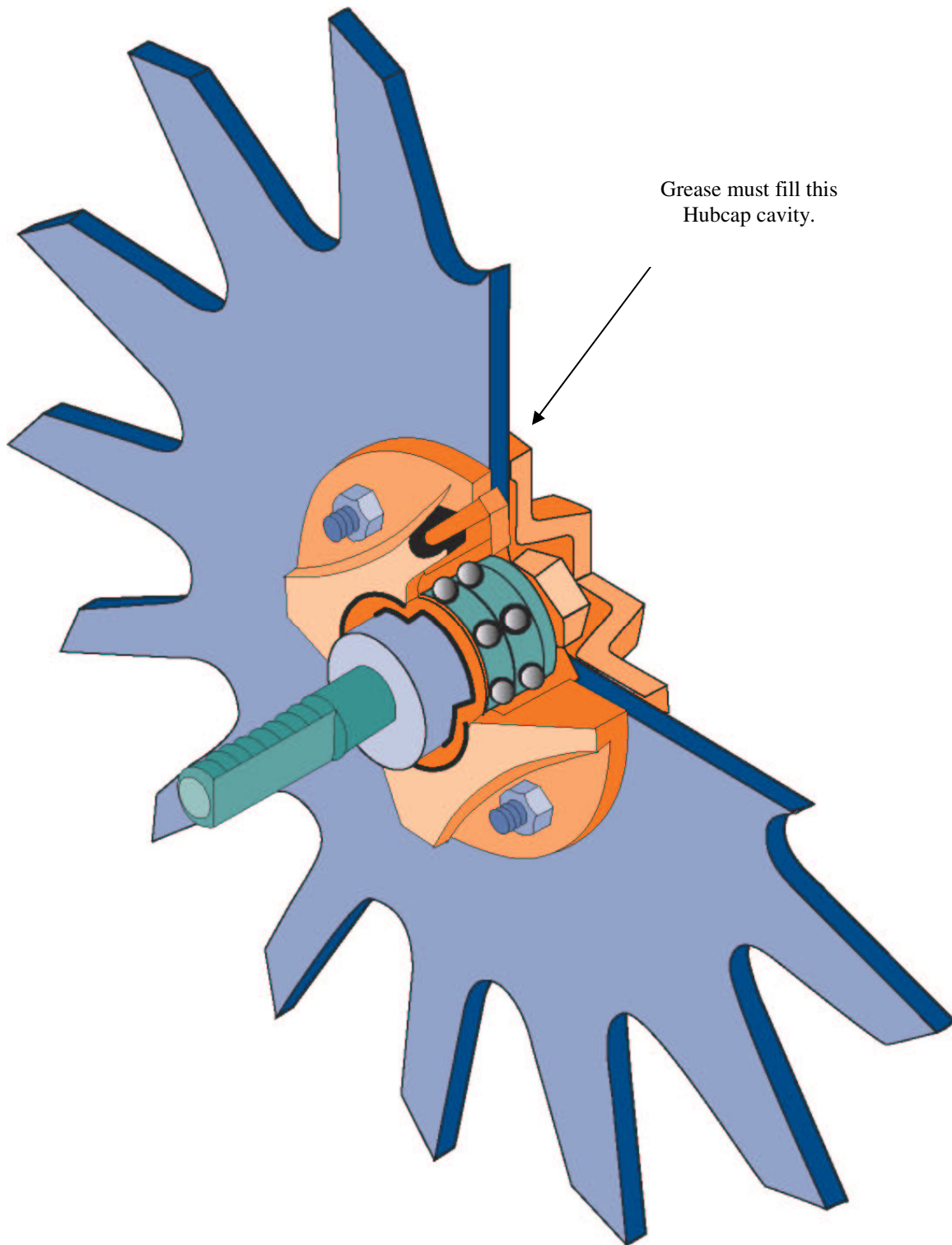


**NOTE:** Be certain to align the grease fitting with the slot in the wheel and the hubcap so that the grease can flow freely.





## MAINTENANCE



## MAINTENANCE

### Lubrication



**CAUTION:** To help prevent serious injury or death to you or others caused by unexpected movement, service machine on a level surface. Lower machine to ground or sufficiently lock or block raised machine before servicing. If machine is connected to tractor, engage parking brake and place transmission in "PARK", shut off engine and remove key. If machine is detached from tractor, block wheels and use shop stands to prevent movement.



**CAUTION:** Do not clean, lubricate, or adjust machine while in motion.

Use grease based on NLGI consistency numbers and the expected air temperature range during the service interval.

Use a **multi-purpose lithium, water resistant, moderate speed, and NLGI grade #2** grease.

Other greases may be used if they meet the following **NLGI Performance**

**Classification: GC-LB**

**IMPORTANT:** Some types of grease thickener are not compatible with others. Consult your grease supplier before mixing different types of grease.

#### **Alternative Lubricants**

Conditions in certain geographical areas may require special lubricants and lubrication practices which do not appear in the operator's manual. If there are any questions, consult Yetter Manufacturing Co. to obtain latest information and recommendation.

<b>PART #</b>	<b>DESCRIPTION</b>	<b>OUNCES OF GREASE</b>
2967-404	13" TAPER TOOTH R.M. WHEEL	1.12 OZ
2967-602	13" SHARK TOOTH R.M. WHEEL	1.12 OZ
2967-186	FLOATER WHEEL KIT W/R.M. WHEEL	2.08 OZ
2967-596	HEAVY DUTY OR BEVEL R.M. WHEEL W/ FLOATER WHEEL KIT	2.40 OZ

### **Storing Lubricants**

Your machine can operate at top efficiency only if clean lubricants are used.

Use clean containers to handle all lubricants.

Store them in an area protected from dust, moisture and other contaminants.

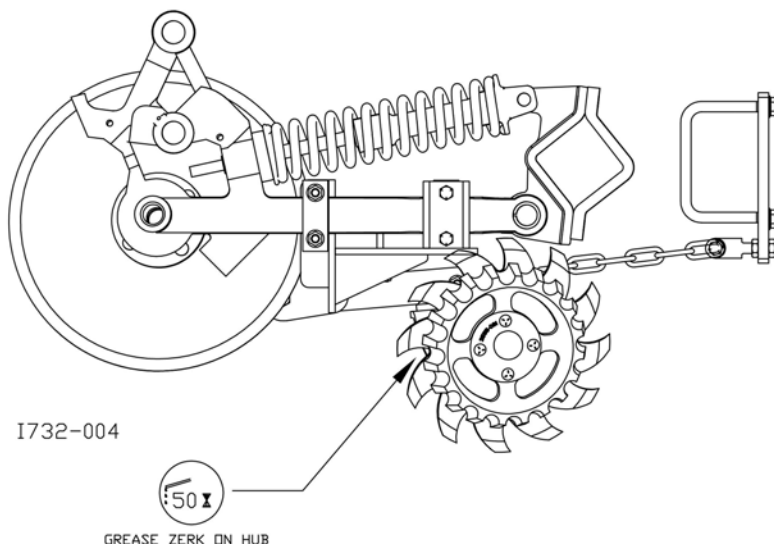
## MAINTENANCE

### Lubrication Symbols



Lubricate with grease at hourly interval indicated on symbol.

### Lubrication Intervals



**IMPORTANT: The recommended service intervals are based on normal conditions; severe or unusual conditions may require more frequent lubrication.**

Perform each lubrication and service procedure at the beginning and end of each season. Clean grease fittings before using grease gun, to avoid injecting dirt and grit into the bearing. Replace any lost or broken fittings immediately. If a fitting fails to take grease, remove and clean thoroughly, replace fitting if necessary. Also check for failure of adjoining parts.

### BEARING REPLACEMENT INSTALLATION

1. When assembling the spoke wheels, bearing assembly and hubcap, be sure to align the grease transfer hole in the spoke wheel with the groove in the hubcap and hole in the hub to allow grease passage.
2. Assemble the wheels, hubs and caps.
3. Grease the wheel/hub/bearing assembly.

## **MAINTENANCE**

### **Storing the Equipment**

Store the machine in an area away from human activity

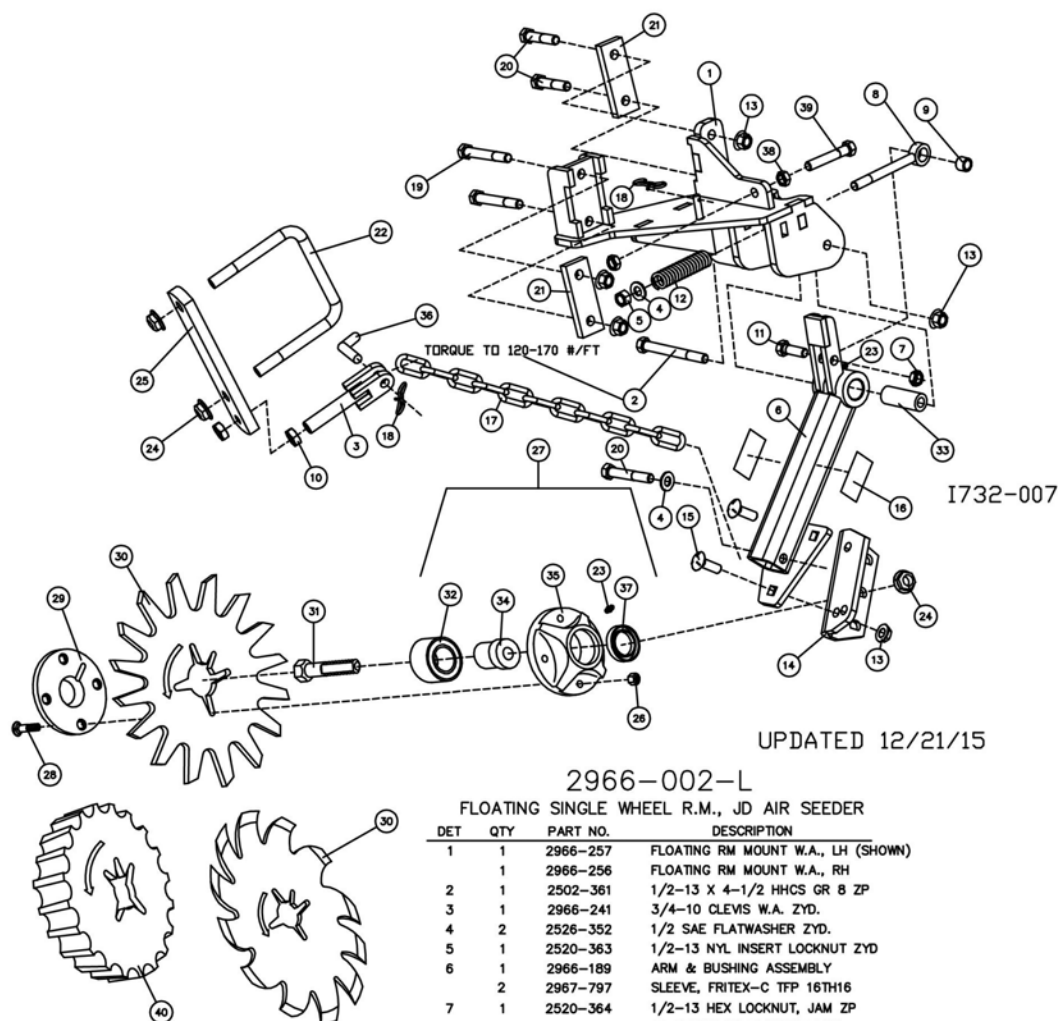
Store machine in RAISED position.

Install service locks on all wheel cylinders.

At the end of the season, the machine should be thoroughly inspected and prepared for storage. Repair or replace any worn or damaged components to prevent down time at the start of the next season. Store machine under cover with all parts in operating condition.

- Clean machine thoroughly to remove all dirt, debris and crop residue, which would hold moisture and cause rusting.
- Inspect machine for worn or broken parts. See your Yetter Farm Equipment dealer during the off-season so that parts or service can be acquired when machine is not needed in the field.
- Lubricate bearings as outlined in the Lubrication section
- Paint all parts which are chipped or worn and require repainting.
- Store machine in a clean, dry place with the planting unit out of the sun.
- If the machine cannot be stored inside, cover with a waterproof tarpaulin and tie securely in place.
- Do not allow children to play on or around the machine

# PARTS IDENTIFICATION



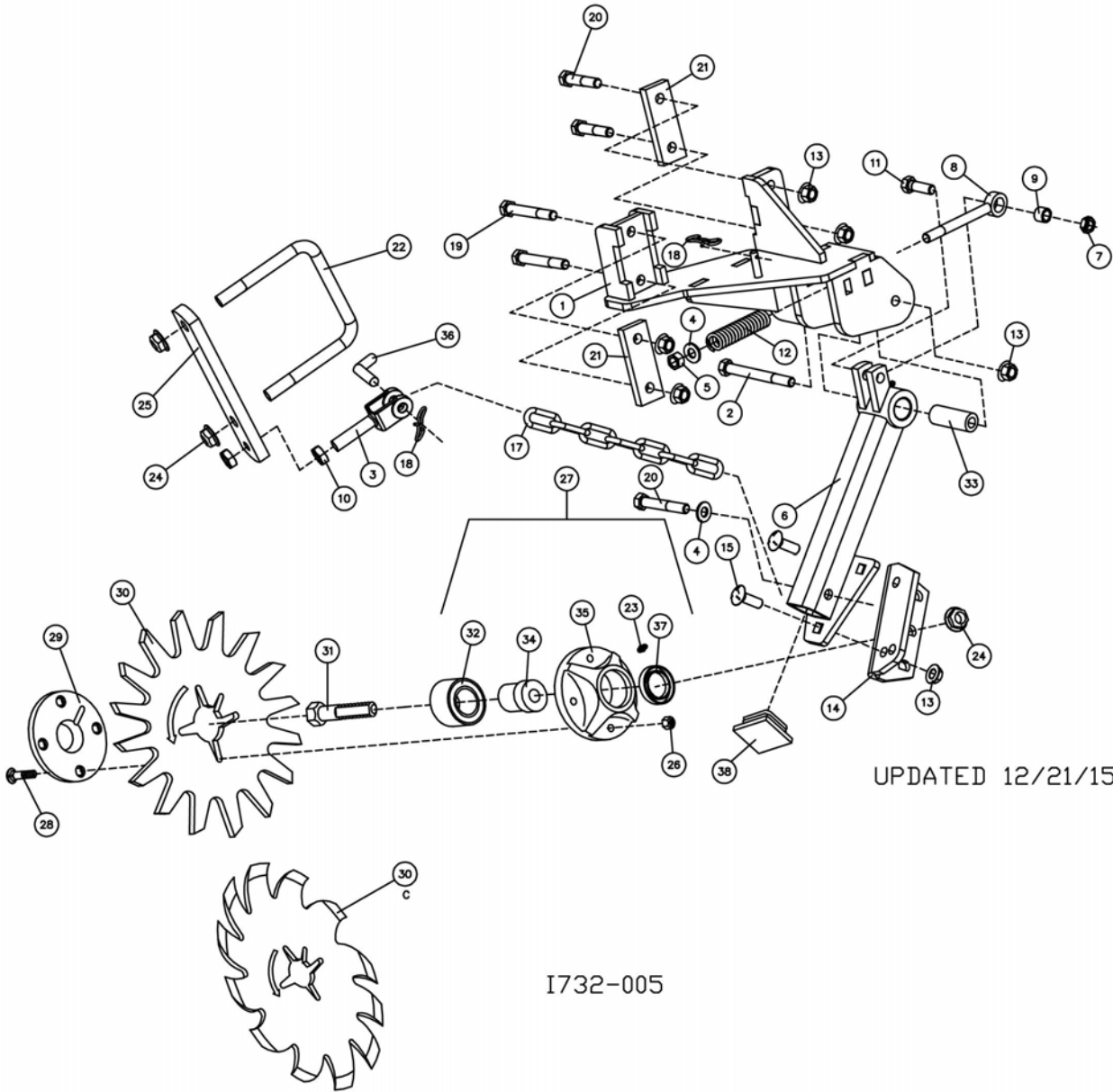
2966-002-L  
FLOATING SINGLE WHEEL R.M., JD AIR SEEDER

DET	QTY	PART NO.	DESCRIPTION
1	1	2966-257	FLOATING RM MOUNT W.A., LH (SHOWN)
	1	2966-256	FLOATING RM MOUNT W.A., RH
2	1	2502-361	1/2-13 X 4-1/2 HHCS GR 8 ZP
3	1	2966-241	3/4-10 CLEVIS W.A. ZYD.
4	2	2526-352	1/2 SAE FLATWASHER ZYD.
5	1	2520-363	1/2-13 NYL INSERT LOCKNUT ZYD
6	1	2966-189	ARM & BUSHING ASSEMBLY
	2	2967-797	SLEEVE, FRITEX-C TFP 16TH16
7	1	2520-364	1/2-13 HEX LOCKNUT, JAM ZP
8	1	2570-774	90 SERIES RM EYEBOLT, ZYD
9	1	2967-622	9/16" SPACER ZYD.
10	2	2520-502	3/4-10 HEX JAM NUT ZYD.
11	1	2502-317	1/2-13 X 1-3/4 HHCS GR5 ZP
12	1	2550-776	LEE SPRING #LC 135L 08 M
13	7	2520-361	1/2-13 HEX FLANGE LOCK NUT ZP
14	1	2967-720-L	FLOATING SINGLE WHEEL MOUNT, LH (SHOWN)
	1	2967-720-R	FLOATING SINGLE WHEEL MOUNT, RH
15	2	2505-339	1/2-13 X 1-1/2 CAR BLT GR 5 ZP
16	2	2565-162	YETTER DECAL, 1-1/2 X 4-1/2
17	1	2967-718	LIFT CHAIN
18	2	2570-448	.120 BOWTIE LOCKING COTTER ZYD
19	2	2502-364	1/2-13 X 4 HHCS GR. 5 ZP
20	3	2502-313	1/2-13 X 3 HHCS GR. 5 ZP
21	2	2967-788	CLAMP PLATE
22	1	2570-765	5/8 X 6 X 5-1/2 U-BOLT ZYD
23	2	2533-110	1/4-28 ZERK STRAIGHT SELF-TAP
24	3	2520-464	5/8-11 WHIZLOCK HEX NUT ZP
25	1	2967-783	CLAMP PLATE
26	4	N10213	5/16-18 HEX FLANGE SERRATED NUT
27	1	2965-128	HUB AND BEARING ASS'Y., 4 BOLT
28	4	2505-207	5/16-18 X 1 1/4 CAR BLT GR5 ZP
		2505-208	5/16-18 X 1 1/2 CAR BLT GR5 ZP (-HD MODELS)
		2505-209	5/16-18 X 1 3/4 CAR BLT GR5 YD (FLOATER WHEEL)
29	1	2965-352	HUB CAP CASTING, 4 BOLT, BLACK
30	1	2967-404	13" TAPER TOOTH SPOKE WHEEL (SHOWN)
	1	2967-596	3/8" TAPER TOOTH SPOKE WHEEL (-HD MODELS)
	1	2967-602	13" SHARK TOOTH WHEEL (SHOWN)
31	1	2570-740	D-BOLT 5/8-11 X 2.812 GR.8 ZYD
32	1	2570-594	BEARING, 2 ROW NTN# DF0654LU
33	1	2967-784	INNER BUSHING
34	1	2570-715	BEARING INSERT, TRASHMASTER
35	1	2965-351	HUB CAST, MACHINED, 4 BOLT
36	1	2984-326	R.M. UPSTOP PIN ZYD
37	1	2550-069	SEAL, TRIPLE LIP, NTN# 1812-5
38	2	2520-356	1/2-13 HEX JAM NUT ZYD.
39	1	2502-355	1/2-13 X 3 FULL THD. HHCS GR 5 ZYD.
40	1	2967-555	FLOATER WHEEL

MFG 01/2011 TO PRESENT

**PARTS IDENTIFICATION**

2966-002-L



UPDATED 12/21/15

I732-005

MFG 10/2009 – 10/2010

# PARTS IDENTIFICATION

## 2966-002-L

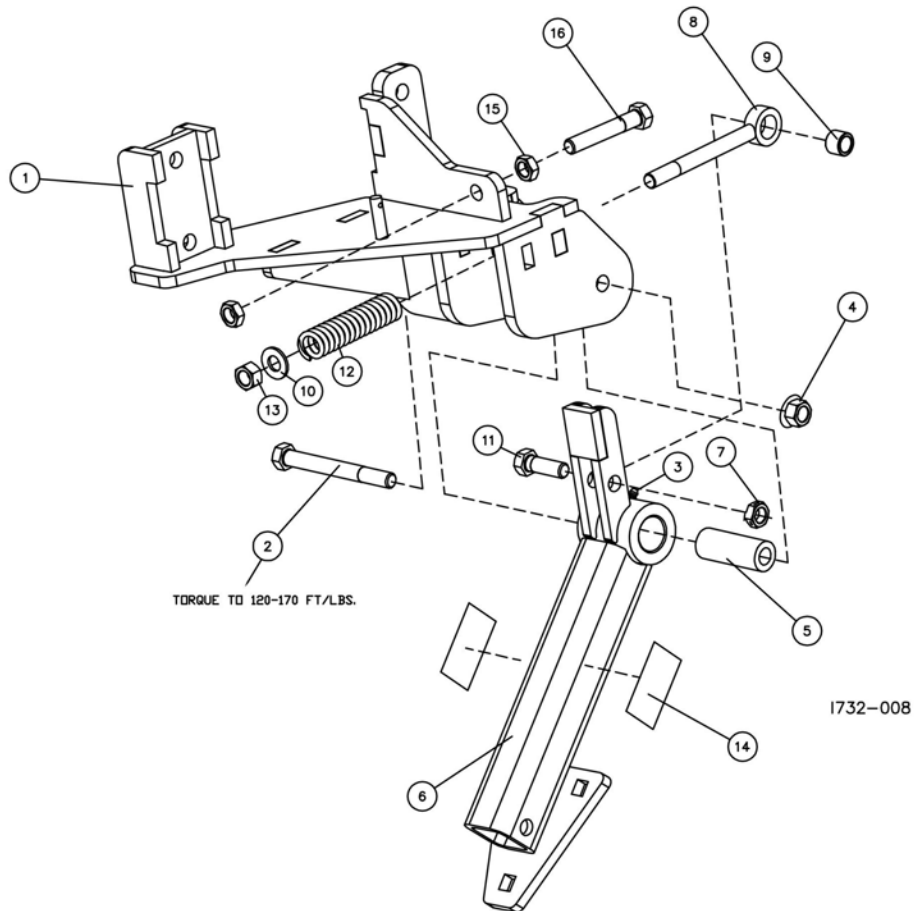
### FLOATING SINGLE WHEEL R.M., JD AIR SEEDER

DET	QTY	PART NO.	DESCRIPTION
1	1	2966-257	FLOATING RM MOUNT W.A., LH (SHOWN)
	1	2966-256	FLOATING RM MOUNT W.A., RH
2	1	2502-363	1/2-13 X 4-1/2 HHCS GR. 5 ZP
3	1	2570-379	5/8-11 CLEVIS ZYD.
4	2	2526-352	1/2 SAE FLATWASHER ZYD.
5	1	2520-363	1/2-13 NYL INSERT LOCKNUT ZYD
6	1	2966-251	FLOATING SINGLE WHEEL STEM W.A.
7	1	2520-364	1/2-13 HEX LOCKNUT, JAM ZP
8	1	2570-774	90 SERIES RM EYEBOLT, ZYD
9	1	2967-622	9/16" SPACER ZYD.
10	2	2520-453	5/8-11 HEX JAM NUT ZYD.
11	1	2502-294	1/2-13 X 1-1/2 HHCS GR. 5 ZP
12	1	2550-776	LEE SPRING #LC 135L 08 M
13	7	2520-361	1/2-13 HEX FLANGE LOCK NUT ZP
14	1	2967-720-L	FLOATING SINGLE WHEEL MOUNT, LH (SHOWN)
	1	2967-720-R	FLOATING SINGLE WHEEL MOUNT, RH
15	2	2505-339	1/2-13 X 1-1/2 CAR BLT GR 5 ZP
16	1	2515-730	END CAP, 2 X 2 X 1/4" WL
17	1	2967-718	LIFT CHAIN
18	2	2570-448	.120 BOWTIE LOCKING COTTER ZYD
19	2	2502-364	1/2-13 X 4 HHCS GR. 5 ZP
20	3	2502-313	1/2-13 X 3 HHCS GR. 5 ZP
21	2	2967-788	CLAMP PLATE
22	1	2570-765	5/8 X 6 X 5-1/2 U-BOLT ZYD
23	1	2533-110	1/4-28 ZERK STRAIGHT SELF-TAP
24	3	2520-464	5/8-11 WHIZLOCK HEX NUT ZP
25	1	2967-783	CLAMP PLATE
26	4	N10213	5/16-18 HEX FLANGE SERRATED NUT
27	1	2965-128	HUB AND BEARING ASS'Y, 4 BOLT
28	4	2505-207	5/16-18 X 1 1/4 CAR BLT GR5 ZP
		2505-208	5/16-18 X 1 1/2 CAR BLT GR5 ZP (-HD MODELS)
29	1	2965-352	HUB CAP CASTING, 4 BOLT, BLACK
30	1	2967-404	13" TAPER TOOTH SPOKE WHEEL (SHOWN)
	1	2967-596	3/8" TAPER TOOTH SPOKE WHEEL (-HD MODELS)
	1	2967-602	13" SHARK TOOTH WHEEL (SHOWN)
31	1	2570-740	D-BOLT, FLANGE, 5/8-11 X 2.812 GR.8 ZYD
32	1	2570-594	BEARING, 2 ROW NTN# DF0654LU
33	1	2967-710	INNER BUSHING
34	1	2570-715	BEARING INSERT, TRASHMASTER
35	1	2965-351	HUB CAST., MACHINED, 4 BOLT
36	1	2984-326	R.M. UPSTOP PIN ZYD
37	1	2550-069	SEAL, TRIPLE LIP, NTI# 1812-5
38	1	2515-717	END CAP, 2X2

MFG 10/2009 – 10/2010

## PARTS IDENTIFICATION

### 2966-187 Left Hand Assembly (Shown) 2966-188 Right Hand Assembly



DET	QTY	PART NO.	DESCRIPTION
1	1	2966-257	FLOATING RM MOUNT W.A., LH
2	1	2502-361	1/2-13 X 4-1/2 HHCS GR 8 ZP
3	1	2533-110	1/4-28 ZERK STRAIGHT SELF-TAP
4	1	2520-361	1/2-13 FLANGE WHIZLOCK HXNT ZP
5	1	2967-784	INNER BUSHING
6	1	2966-189	ARM & BUSHING ASSEMBLY
	2	2967-797	SLEEVE, FRITEX-C TFP 16TH16
7	1	2520-364	1/2-13 HEX LOCKNUT, JAM ZP
8	1	2570-774	90 SERIES RM EYEBOLT, ZYD
9	1	2967-622	9/16" SPACER ZYD
10	1	2526-352	1/2 SAE FLATWASHER ZP
11	1	2502-317	1/2-13 X 1-3/4 HHCS GR. 5 ZP
12	1	2550-776	LEE SPRING# LHL 1000A 11
13	1	2520-363	1/2-13 NYL INSERT LOCKNUT ZYD.
14	2	2565-162	YETTER DECAL, 1-1/2 X 4-1/2
15	2	2520-356	1/2-13 HEX JAM NUT ZYD.
16	1	2502-355	1/2-13 X 3 (2-1/4THD) HHCS ZYD.

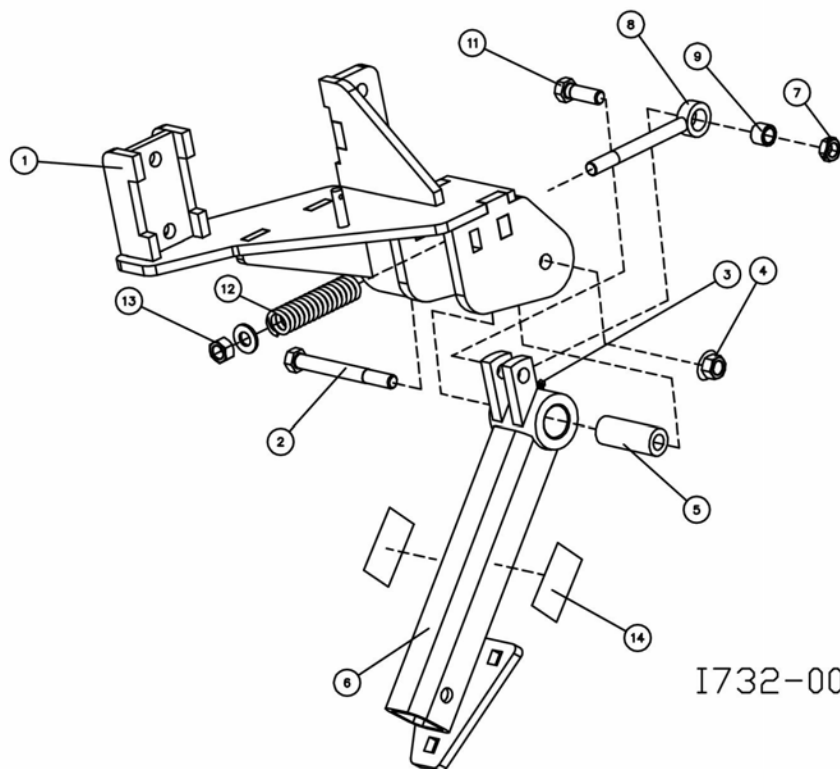
UPDATED 03/26/14

01/2011 - PRESENT



## PARTS IDENTIFICATION

2966-187 Left Hand Assembly (Shown)  
2966-188 Right Hand Assembly



DET	QTY	PART NO.	DESCRIPTION
1	1	2966-257	FLOATING RM MOUNT W.A., LH (SHOWN)
	1	2966-256	FLOATING RM MOUNT WA, RH
2	1	2502-363	1/2-13 X 4-1/2 HHCS GR. 5 ZP
3	1	2533-110	1/4-28 ZERK STRAIGHT SELF-TAP
4	1	2520-361	1/2-13 FLANGE WHIZLOCK HXNT ZP
5	1	2967-784	INNER BUSHING
6	1	2966-189	ARM & BUSHING ASSEMBLY
7	1	2520-364	1/2-13 HEX LOCKNUT, JAM ZP
8	1	2570-774	90 SERIES RM EYEBOLT, ZYD
9	1	2967-622	9/16" SPACER ZYD
10	1	2526-352	1/2 SAE FLATWASHER ZP
11	1	2502-317	1/2-13 X 1-3/4 HHCS GR. 5 ZP
12	1	2550-776	LEE SPRING# LC 135L 08 M
13	1	2520-363	1/2-13 NYL INSERT LOCKNUT ZYD.
14	2	2565-162	YETTER DECAL, 1-1/2 X 4-1/2

I732-006

MFG 10/2009 – 10/2010

## NOTES:

## NOTES:

# Our name Is getting known

Just a few years ago, Yetter products were sold primarily to the Midwest only. Then we embarked on a program of expansion and moved into the East, the South, the West and now north into Canada. We're even getting orders from as far away as Australia and Africa.

So, when you buy Yetter products . . .you're buying a name that's recognized. A name that's known and respected. A name that's become a part of American agriculture and has become synonymous with quality and satisfaction in the field of conservation tillage.

Thank you.

**YETTER MANUFACTURING CO.**

Colchester, IL 62326-0358 • 309/776-4111

Toll Free 800/447-5777

Fax 309/776-3222

Website: [WWW.YETTERCO.COM](http://WWW.YETTERCO.COM)

E-MAIL: [INFO@YETTERCO.COM](mailto:INFO@YETTERCO.COM)

2565-759\_REV\_G • 02/16