



2967-188
QUICK ADJUST KIT
FOR
2967-015 – RESIDUE MANAGER
ASSEMBLY & OPERATION MANUAL
WITH PARTS IDENTIFICATION

YETTER MANUFACTURING CO.
FOUNDED 1930

Colchester, IL 62326-0358
Toll free: 800/447-5777
309/776-3222 (Fax)
Website: www.yetterco.com
E-mail: info@yetterco.com

YETTER

FOREWORD

You've just joined an exclusive but rapidly growing club.

For our part, we want to welcome you to the group and thank you for buying a Yetter product.

We hope your new Yetter products will help you achieve both goals-increase your productivity and increase your efficiency so that you may generate more profit.

This operator's manual has been designed into four major sections: Foreword, Safety Precautions, Installation Instructions and Parts Breakdown.



This **SAFETY ALERT SYMBOL** indicates important safety messages in the manual. When you see this symbol, be alert to the possibility of **PERSONAL INJURY** and carefully read the message that follows.

The word **NOTE** is used to convey information that is out of context with the manual text. It contains special information such as specifications, techniques and reference information of a supplementary nature.

The word **IMPORTANT** is used in the text when immediate damage will occur to the machine due to improper technique or operation. Important will

apply to the same information as specified by note only of an immediate and urgent nature.

It is the responsibility of the user to read the operator's manual and comply with the safe and correct operating procedure and to lubricate and maintain the product according to the maintenance schedule in the operator's manual.

The user is responsible for inspecting his machine and for having parts repaired or replaced when continued use of the product would cause damage or excessive wear to the other parts.

It is the user's responsibility to deliver his machine to the Yetter dealer who sold him the product for service or replacement of defective parts, which are covered by the warranty policy.

If you are unable to understand or follow the instructions provided in this publication, consult your local Yetter dealer or contact:

YETTER MANUFACTURING CO.

309/776-4111

800/447-5777

309/776-3222 (FAX)

Website: www.yetterco.com

E-mail: info@yetterco.com

WARRANTY

Yetter Manufacturing warrants all products manufactured and sold by it against defects in material. This warranty being expressly limited to replacement at the factory of such parts or products as shall appear to be defective after inspection. This warranty does not obligate the Company to bear cost of labor in replacement of parts. It is the policy of the Company to make improvements without incurring obligations to add them to any unit already sold. No warranty is made or authorized to be made, other than herein set forth. This warranty is in effect for one year after purchase.

Dealer _____

Yetter Manufacturing warrants its own products only and cannot be responsible for damages to equipment on which mounted.

SAFETY

A brief description of signal words that may be used in this manual:

CAUTION: Used as a general reminder of good safety practices or to direct attention to unsafe practices.

WARNING: Denotes a specific potential hazard.

DANGER: Denotes the most serious specific potential hazard.

SAFETY PRECAUTIONS

You can make your farm a safer place to live and work if you observe the safety precautions given. Study these precautions carefully and insist that those working with you and for you follow them.

Finally, remember this: an accident is usually caused by someone's carelessness, neglect or oversight.



WARNING

Never clean, lubricate or adjust a machine that is in motion. Always lower or block the implement before performing service.

If the machine must be serviced in the raised position, jack or block it up to prevent it from accidentally falling and injuring someone.

Do not allow riders on the tractor or implement.

Use speeds and caution dictated by the terrain being traversed. Do not operate on any slope steep enough to cause tipping or loss of control.

Be sure all personnel are clear of the immediate area before operating.

Read and understand the operator's manual and require all other persons who will operate the equipment to do the same.

Be familiar with all tractor and implement controls and be prepared to stop engine and implements quickly in an emergency.



CAUTION

Consult your implement and tractor operator's manual for correct and safe operating practices.

Beware of towed implement width and allow safe clearance.

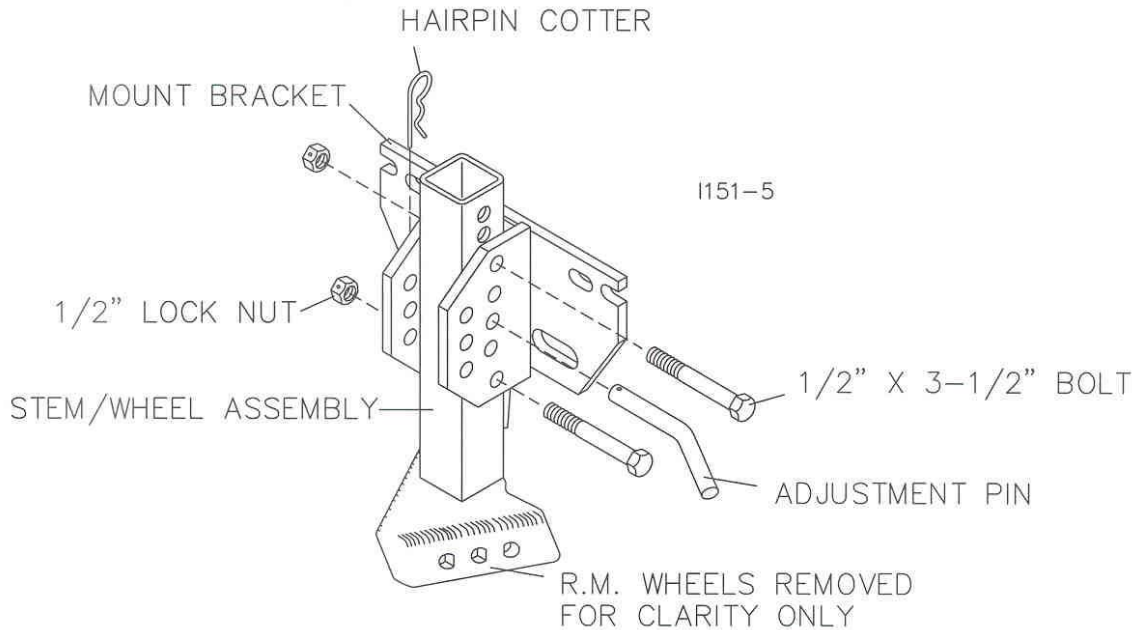
FAILURE TO HEED MAY RESULT IN PERSONAL INJURY OR DEATH.

TABLE OF CONTENTS

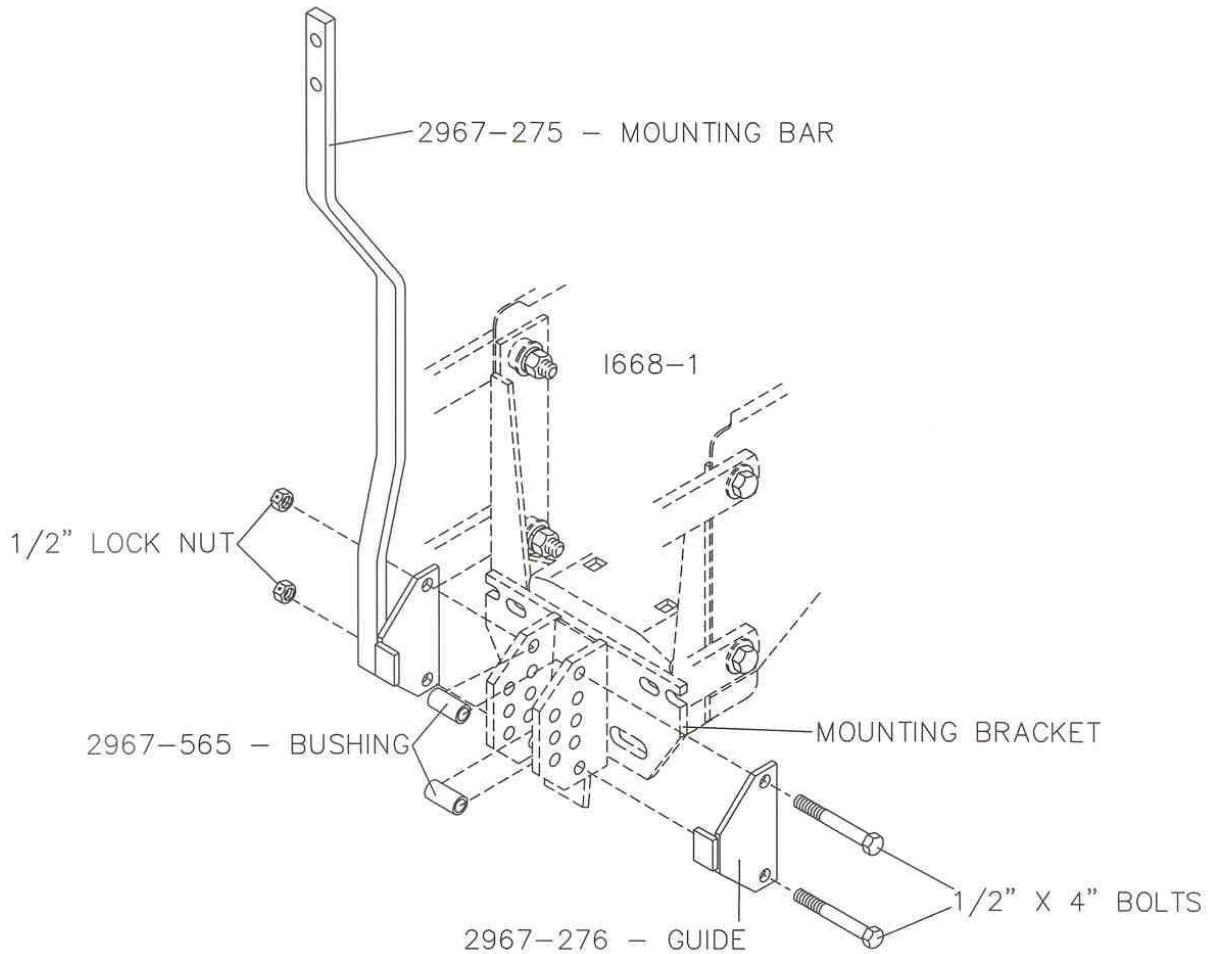
Warranty.....	2
Safety Symbols and Meanings	3
Table of Contents.....	4
Assembly Instruction.....	5-8
Operation.....	9
Maintenance.....	9
Parts Identification.....	10
Trouble Shooting.....	11

INSTALLATION / ASSEMBLY INSTRUCTIONS

STEP 1. Remove stem/wheel assembly from the 2967-211 mount bracket, the adjustment pin and hairpin cotter will not be used again. Remove the 2) 1/2" x 3-1/2" bolts that supported the stem/wheel assembly, the 1/2" x 3-1/2" bolts and lock nuts will not be used again.

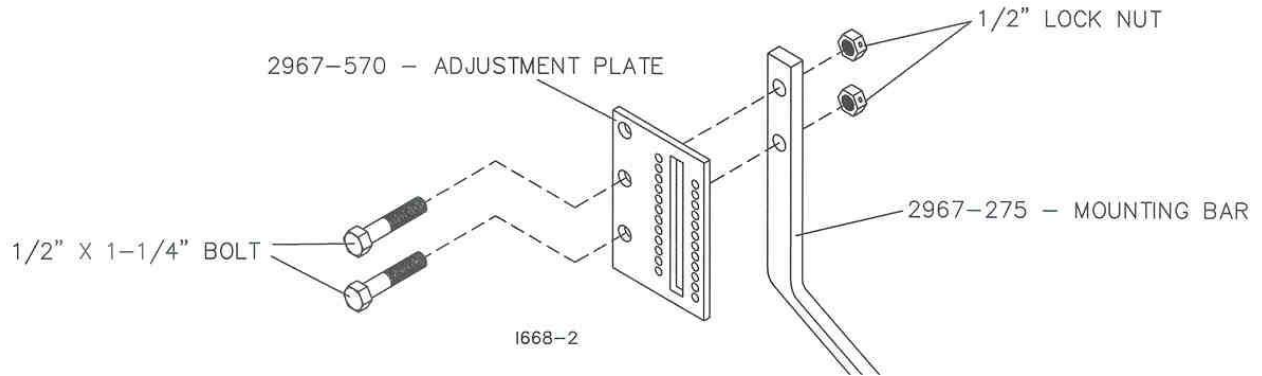


STEP 2. Attach the 2967-276 guide, 2967-565 bushings and the 2967-275 mounting bar to the mount bracket using 2) 1/2" x 4" bolts and lock nuts. Securely tighten the fasteners.

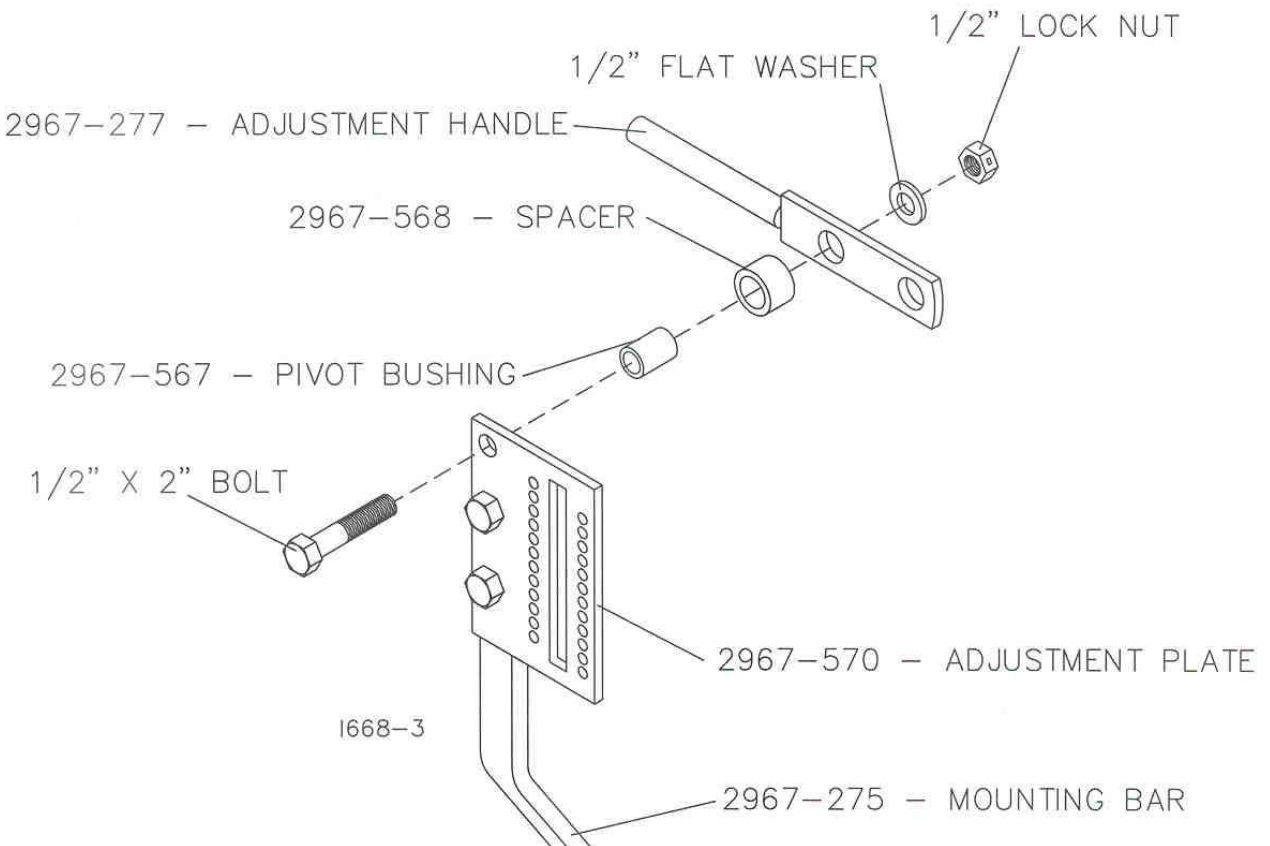


INSTALLATION / ASSEMBLY INSTRUCTIONS

STEP 3. Attach the 2570-570 adjustment plate to the 2967-275 mounting bar using 2) 1/2" x 1-1/4" bolts and lock nuts.

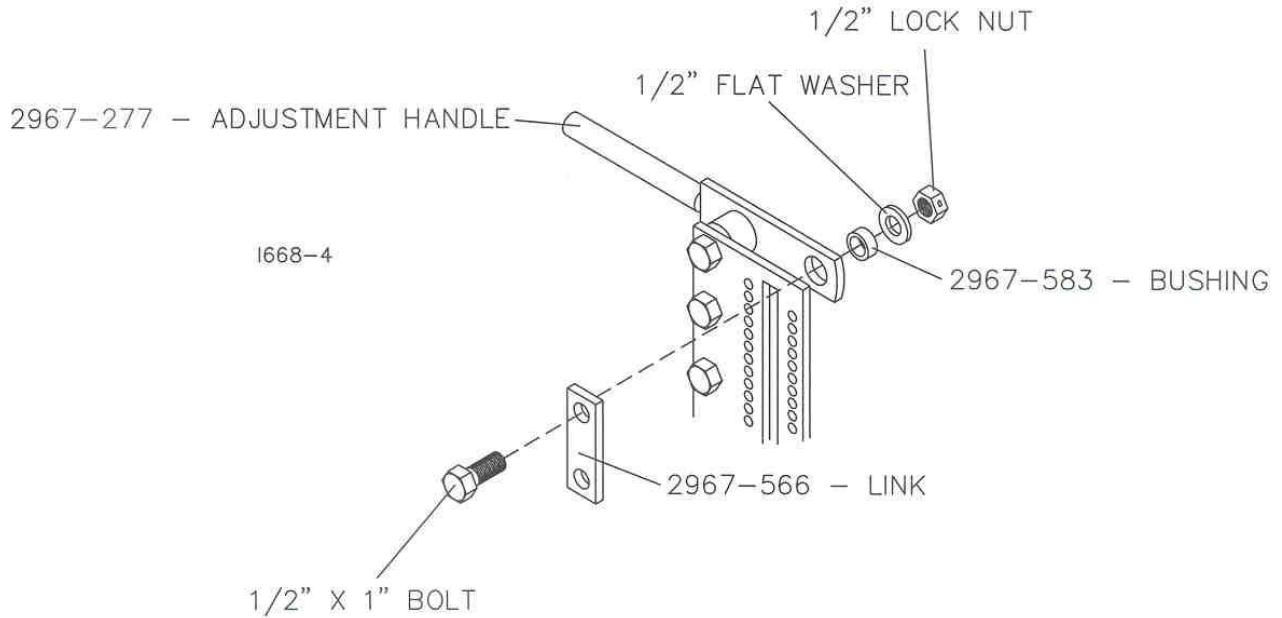


STEP 4. Attach the 2967-277 adjustment handle to the 2967-570 adjustment plate using the 1/2" x 2" bolt, 2967-567 pivot bushing, 2967-568 spacer, 1/2" flat washer and lock nut. Fully tighten all fasteners.

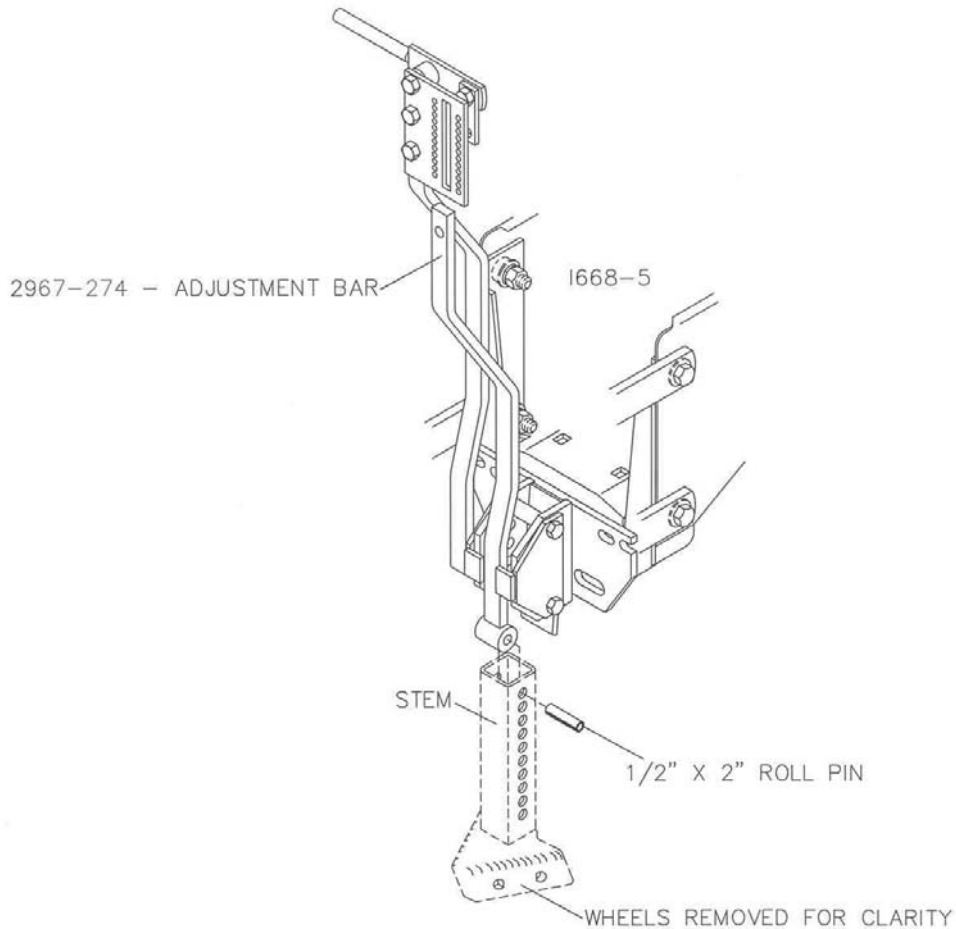


INSTALLATION / ASSEMBLY INSTRUCTIONS

STEP 5. Attach the 2967-566 link to the 2967-277 using the 1/2" x 1" bolt and lock nut. DO NOT OVERTIGHTEN LOCK NUT, the 2967-566 links needs to pivot freely.

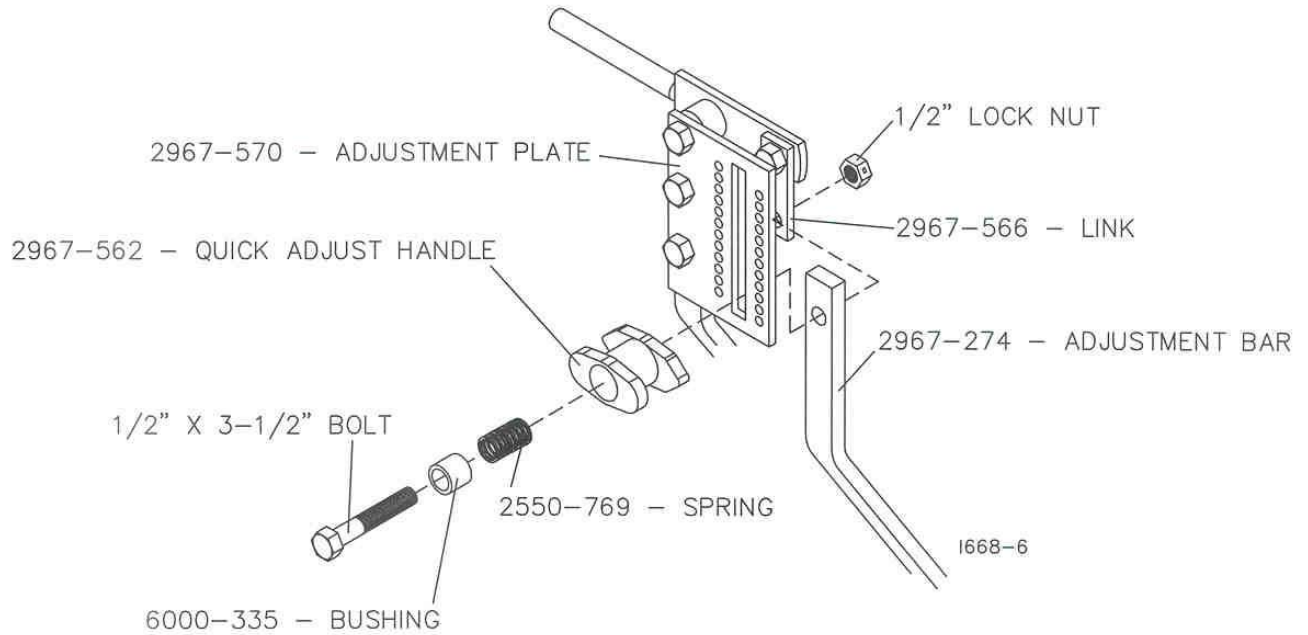


STEP 6. Slide the 2967-274 adjustment bar down through the guide plate/mounting bracket insert into the 2 x 2 adjustment tube of the stem/wheel assembly and fasten to the top adjustment hole using the 1/2" x 2" roll pin. Drive the roll pin until it is flush with the adjustment tube.



INSTALLATION / ASSEMBLY INSTRUCTIONS

STEP 7. Connect the 6000-335 bushing, 2550-769 spring, 2967-562 quick adjust handle to the 2967-570 adjustment plate, 2967-274 adjustment bars and 2967-566 link using the 1/2" x 3-1/2" bolt and lock nut. DO NOT OVERTIGHTEN THE LOCK NUT.



OPERATION

ADJUSTMENTS

Be sure the planter is level and at the height from the soil as stated in the planter operation manual.

DEPTH

To adjust residue manager wheels, apply a downward force on the 2967-277 adjustment handle to take weight off of the 2967-562 quick adjust handle. Raise the 2967-277 adjustment lever to set residue manager wheels deeper, lower the 2967-277 adjustment lever to set residue manager wheels more shallow.

The quick adjust has 20 settings in increments that average 3/16" for 3-3/4" of travel. The deepest setting is 1/2" above 15" diameter planter blades, the shallowest setting is 4-1/4" above 15" diameter planter blades.

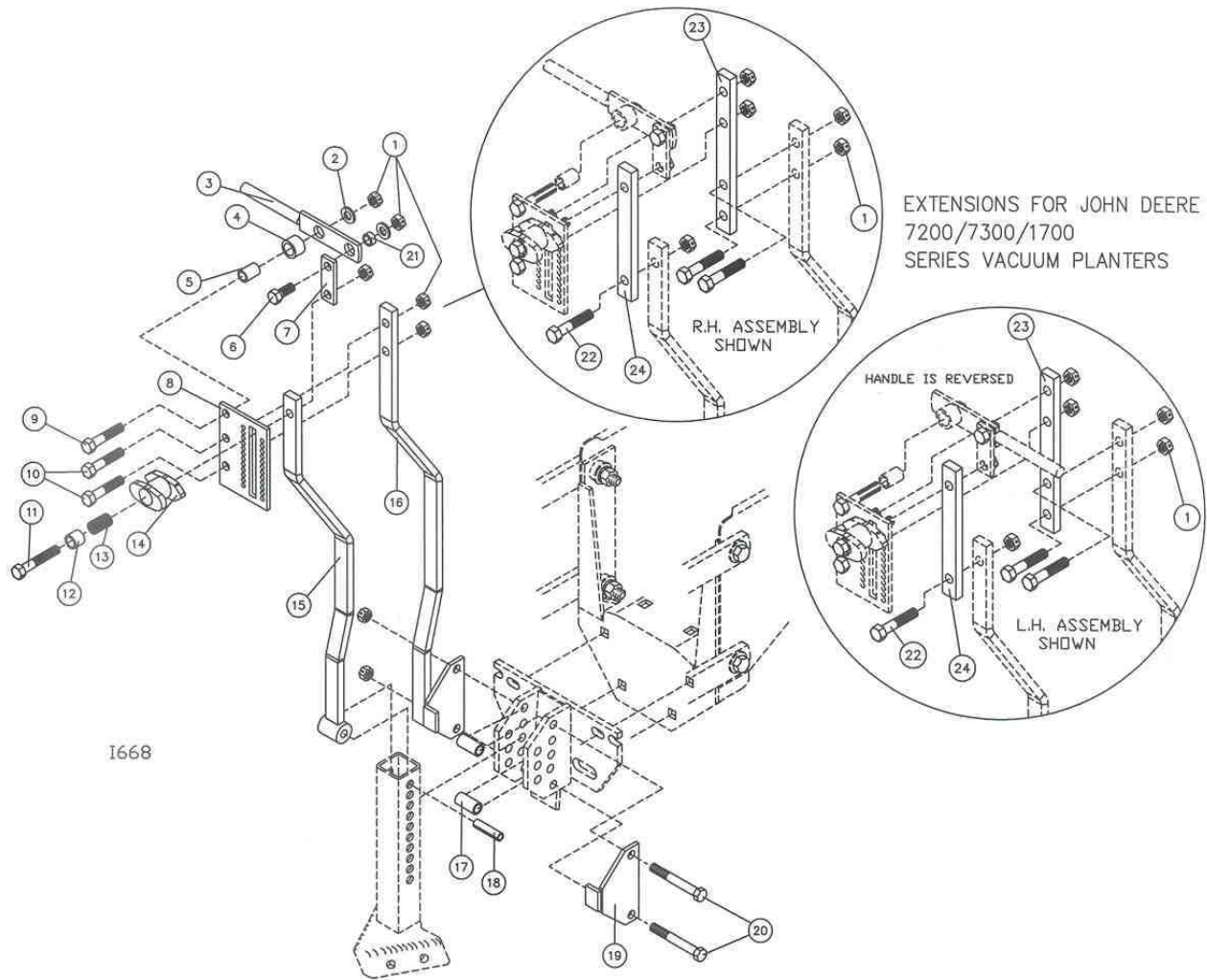
RESIDUE MANAGER DO'S AND DON'TS

1. **DO NOT** move soil; Residue Managers are designed to move crop residue only.
2. **DO NOT** operate planter at slow speeds, ground speed affects how aggressive the spoke wheels are; operate at sufficient speed (4-6 mph) to maintain good residue flow.
3. **DO NOT** expect 100% of crop residue to be cleared, it is not necessary and would necessitate engaging the soil. The width of path cleared depends on ground conditions, depth setting and ground speed.
4. **DO** expect to see wheels occasionally quit turning, indicates ideal (shallow) setting which is not moving soil.
5. **DO** expect the potential to bend or break teeth on wheels in excessively rocky conditions.
6. **DO** adjust toolbar frame height and drawbar correctly. Very important to ensure planter units will follow ground contours properly.
7. **Do** adjust planter unit down pressure kit correctly to prevent excessive depth in soft, loose soils.
8. **DO** expect more adjustments to be required in finely tilled or soft soils. In these conditions, the planter may lose floatation, requiring adjustment of the residue manager to shallower positions.

MAINTENANCE

After a few hours use, check all bolts to make sure they are secure.

PARTS IDENTIFICATION



I668

2967-188 - QUICK ADJ., 2967-015

DET	QTY	PART NO.	DESCRIPTION	DET	QTY	PART NO.	DESCRIPTION
1	10	2520-357	1/2-13 LOCK HEX NUT ZYD	13	1	2550-769	SPRING
2	2	2526-352	1/2 SAE FLAT WASHER ZYD	14	1	2967-562	Q.A. HANDLE (1/2")
3	1	2967-277	ADJ. HANDLE W.A.	15	1	2967-274	ADJ. BAR W.A.
4	1	2967-568	SPACER	16	1	2967-275	MOUNTING BAR W.A.
5	1	2967-567	PIVOT BUSHING	17	2	2967-565	BUSHING
6	1	2502-292	1/2-13 X 1" HHCS GR.5 ZYD	18	1	2530-219	1/2 X 2 ROLL PIN ZYD
7	1	2967-566	LINK	19	1	2967-276	GUIDE W.A.
8	1	2967-570	ADJ. PLATE	20	2	2502-364	1/2-13 X 4 HHCS GR. 5 ZYD
9	1	2502-351	1/2-13 X 2 HHCS GR.5	21	1	2967-583	5/16" BUSHING ZYD
10	2	2502-293	1/2-13 X 1-1/4 HHCS GR. 5 ZYD	22	3	2502-294	1/2-13 X 1-1/2 HHCS GR5 ZP
11	1	2502-316	1/2-13 X 3-1/2 HHCS GR. 5 ZYD	23	1	2967-581	EXTENSION, MOUNTING BAR W.A.
12	1	6000-335	9/16" BUSHING	24	1	2967-582	EXTENSION, ADJ. BAR W.A.

TROUBLESHOOTING

Problem	Cause	Solution
Residue manager not moving residue.	Adjusted too shallow.	Adjust residue manager wheels deeper.
Residue manager moving too much soil.	Adjusted too deep.	Adjust residue manager wheels more shallow.
	Planter frame is not level.	Adjust planter frame to 20"-22" above soil and level.
Adjustment handle will not slide/not able to adjust.	½" X 3-1/2" too tight, too much tension on the spring.	Loosen the lock nut so that the adjustment handle can slide.
	Mounting bar or adjustment bar are damaged.	Repair or replace damaged parts.
Adjustment handle will not stay at desired setting.	Tension spring is broken.	Replace tension spring 2550-769.

Our name Is getting known

Just a few years ago, Yetter products were sold primarily to the Midwest only. Then we embarked on a program of expansion and moved into the East, the South, the West and now north into Canada. We're even getting orders from as far away as Australia and Africa.

So, when you buy Yetter products . . .you're buying a name that's recognized. A name that's known and respected. A name that's become a part of American agriculture and has become synonymous with quality and satisfaction in the field of conservation tillage.

Thank you.

YETTER MANUFACTURING CO.
Colchester, IL 62326-0358 • 309/776-4111
Toll Free 800/447-5777
Fax 309/776-3222
Website: www.yetterco.com
E-mail: info@yetterco.com

2565-494_REV_A • 03/09