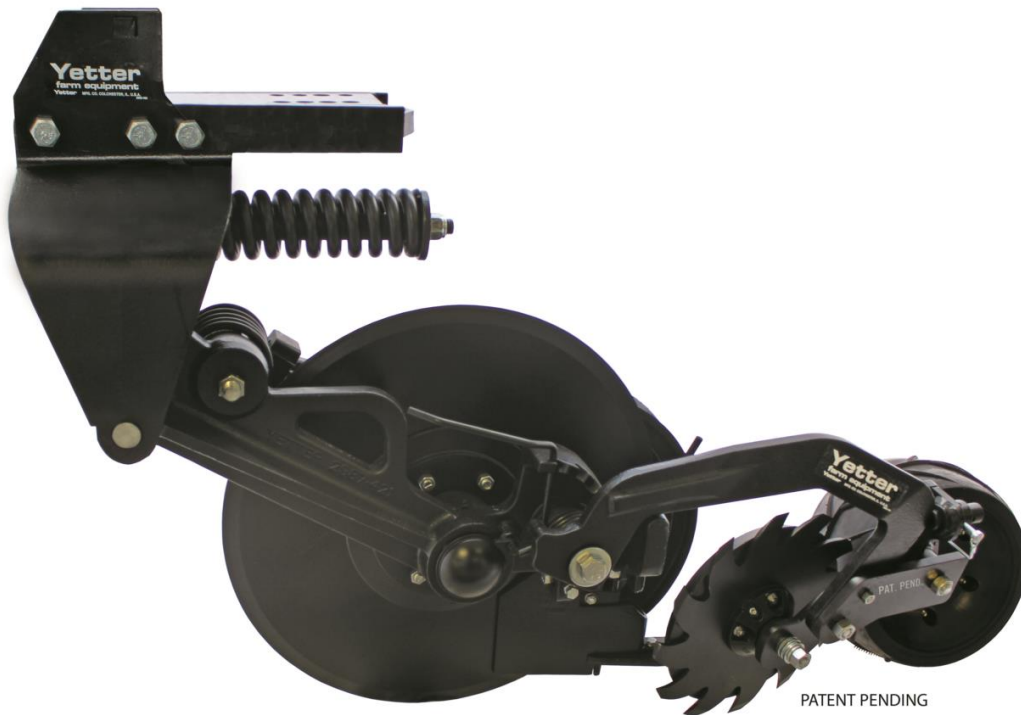




## 10000 SERIES MAGNUM™ FERTILIZER COULTER

2565-957\_Rev\_K 04/2023



**YETTER MANUFACTURING CO.**

*Founded 1930*

Colchester, IL 62326-0358

Toll free: 800-447-5777

Fax: 309-776-3222

Website: [www.yetterco.com](http://www.yetterco.com)

Email: [info@yetterco.com](mailto:info@yetterco.com)

**YETTER**

## FOREWORD

You've just joined an exclusive but rapidly growing club.

For our part, we want to welcome you to the group and thank you for buying a Yetter product.

We hope your new Yetter products will help you achieve both goals-increase your productivity and increase your efficiency so that you may generate more profit.

This operator's manual has been designed into four major sections: Foreword, Safety Precautions, Installation Instructions and Parts Breakdown.

This **SAFETY ALERT SYMBOL** indicates important safety messages in the manual. When you see this symbol, be alert to the possibility of **PERSONAL INJURY** and carefully read the message that follows.



The word **NOTE** is used to convey information that is out of context with the manual text. It contains special information such as specifications, techniques and reference information of a supplementary nature.

The word **IMPORTANT** is used in the text when immediate damage will occur to the machine due to improper technique or operation. Important will apply to the same information as specified by note only of an immediate and urgent nature.

It is the responsibility of the user to read the operator's manual and comply with the safe and correct operating procedure and to lubricate and maintain the product according to the maintenance schedule in the operator's manual.

The user is responsible for inspecting his machine and for having parts repaired or replaced when continued use of the product would cause damage or excessive wear to the other parts.

It is the user's responsibility to deliver his machine to the Yetter dealer who sold him the product for service or replacement of defective parts, which are covered by the warranty policy.

If you are unable to understand or follow the instructions provided in this publication, consult your local Yetter dealer or contact:

### YETTER MANUFACTURING CO.

309/776-4111

800/447-5777

309/776-3222 (FAX)

Website: [www.yetterco.com](http://www.yetterco.com)

E-mail: [info@yetterco.com](mailto:info@yetterco.com)

## WARRANTY

Yetter Manufacturing warrants all products manufactured and sold by it against defects in material. This warranty being expressly limited to replacement at the factory of such parts or products as shall appear to be defective after inspection. This warranty does not obligate the Company to bear cost of labor in replacement of parts. It is the policy of the Company to make improvements without incurring obligations to add them to any unit already sold. No warranty is made or authorized to be made, other than herein set forth. This warranty is in effect for one year after purchase.

DEALER: \_\_\_\_\_

Yetter Manufacturing warrants its own products only and cannot be responsible for damages to equipment on which mounted.

## TABLE OF CONTENTS

|                                    |              |
|------------------------------------|--------------|
| <b>Foreword .....</b>              | <b>2</b>     |
| <b>Safety .....</b>                | <b>4</b>     |
| <b>Torque .....</b>                | <b>5</b>     |
| <b>General Information.....</b>    | <b>6-7</b>   |
| <b>Assembly Instructions .....</b> | <b>8-9</b>   |
| <b>Operation.....</b>              | <b>10-12</b> |
| <b>Troubleshooting .....</b>       | <b>13</b>    |
| <b>Maintenance .....</b>           | <b>14-18</b> |
| <b>Part Identification .....</b>   | <b>19-51</b> |



## **BE ALERT!** **YOUR SAFETY IS INVOLVED.**

WATCH FOR THIS SYMBOL. IT POINTS OUT IMPORTANT SAFETY PRECAUTIONS.  
IT MEANS "ATTENTION---BECOME ALERT!"



It is your responsibility as an owner, operator, or supervisor to know and instruct everyone using this machine at the time of initial assignment and at least annually thereafter, of the proper operation, precautions, and work hazards which exist in the operation of the machine in accordance with OSHA regulations.

### **Safety Is No Accident**



The following safety instructions, combined with common sense, will save your equipment from needless damage and the operator from unnecessary exposure to personal hazard. Pay special attention to the caution notes in the text. Review this manual at least once each year with new and/or experienced operators.

1. Read and understand the operator's manual before operating this machine. Failure to do so is considered a misuse of the equipment.
2. Make sure equipment is secure before operating.
3. Always keep children away from equipment when operating.
4. Make sure everyone that is not directly involved with the operation is out of the work area before beginning the operation.
5. Make sure all safety devices, shields, and guards are in place and are functional before beginning the operation.
6. Shut off power to adjust, service, or clean.
7. Keep hands, feet, and clothing away from moving parts. It is a good idea to remove all jewelry before starting the operation.
8. Visually inspect the machine periodically during operation for signs of excessive vibration, loose fasteners, and unusual noises.

**WARNING:** Never work around the toolbar/implement while in a raised position without using safety lockups.



**CAUTION:** The 10000 Series Magnum™ coulters are very heavy. Pay extra attention to lifting techniques when handling or maneuvering the coulters during assembly. Failure to do so may lead to personal injury.

## BOLT TORQUE

Before operating the 10000 Series Magnum™ for the first time, check to be sure that all hardware is tight. Check all hardware again after approximately 50 hours of operation and at the beginning of each planting season.

All hardware used on the 10000 Series Magnum™ is Grade 5 unless otherwise specified. Grade 5 cap screws are marked with three radial lines on the head. If hardware must be replaced, be sure to replace it with hardware of equal size, strength and thread type. Refer to the torque table below when tightening hardware.



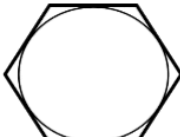



**Important:** Over tightening hardware can cause as much damage as when under tightening. Tightening hardware beyond the recommended range can reduce its shock load capacity.

The chart below is a guide for proper torque. Use it unless a specified torque is called out elsewhere in the manual.

Torque is the force you apply to the wrench handle or the cheater bar, times the length of the handle or bar.

Use a torque wrench whenever possible.

The following table shows torque in ft. lbs. for coarse thread hardware.

| Bolt Diameter<br>and Threads per<br>Inch | <br>Grade 2 | <br>Grade 5 | <br>A-325 | <br>Grade 8 |
|--|---|---|--|---|
| 1/4                                      | 6   | 10  |  | 14  |
| 5/16                                     | 12  | 20  |  | 30  |
| 3/8 – 16                                 | 25  | 35  |  | 50  |
| 7/16 – 14                                | 35  | 55  |  | 80  |
| 1/2 – 13                                 | 55  | 85  |  | 125   |
| 9/16 – 12                                | 75  | 125   |  | 175   |
| 5/8 – 11                                 | 105   | 170   |  | 235   |
| 3/4-10                                   | 185   | 305   |  | 425   |
| 7/8 – 9                                  | 170   | 445   |  | 690   |
| 1-8                                      | 260   | 670   |  | 1030  |
| 1 1/8 – 7                                | 365   | 900   |  | 1460  |
| 1 1/4 - 7                                | 515   | 1275  |  | 2060  |
| 1 3/8 – 6                                | 675   | 1675  |  | 2700  |
| 1 1/2 - 6                                | 900   | 2150  |  | 3500  |
| 1 3/4 – 5                                | 1410  | 3500  |  | 5600  |

# GENERAL INFORMATION

## 10000 Series Magnum™ Fertilizer Coulter

### STANDARD FEATURES FOR ALL MODELS

- High application speeds with minimal soil disturbance for fall, pre-plant, and side-dressing applications
- Tube kits for applying liquid, dry, or anhydrous
- All cast design
- Spring loaded knife with carbide tip for extended wear
- 22.6" blade set at 4° angle.
- Fits 4x4, 4x6, 5x7, 6x4, and 7x7 toolbar sizes
- Sharktooth® Wheel Closer standard

| Model No.     | Description   | Est. Wt. |
|---------------|---|----------|
| 10000-001A-LH | LH MAGNUM, w/ Walking Tandem*, fits toolbars 4,5,6,7 wide Unv. Mt.  | 380 lbs  |
| 10000-001A-RH | RH MAGNUM, w/ Walking Tandem*, fits toolbars 4,5,6,7 wide-Unv. Mt.  | 380 lbs  |
| 10000-002A-LH | LH MAGNUM, w/ Walking Tandem*, fits toolbars 4" wide, Short Mt.     | 375 lbs  |
| 10000-002A-RH | RH MAGNUM, w/ Walking Tandem*, fits toolbars 4" wide, Short Mt.     | 375 lbs  |
| 10000-003A-LH | LH MAGNUM, w/o Walking Tandem*, fits toolbars 4,5,6,7 wide Unv. Mt. | 355 lbs  |
| 10000-003A-RH | RH MAGNUM, w/o Walking Tandem*, fits toolbars 4,5,6,7 wide Unv. Mt. | 355 lbs  |
| 10000-004A-LH | LH MAGNUM, w/o Walking Tandem*, fits toolbars 4" wide Short Mt.     | 345 lbs  |
| 10000-004A-RH | RH MAGNUM, w/o Walking Tandem*, fits toolbars 4" wide Short Mt.     | 345 lbs  |

### Section B:

| Model No.    | Description   | Est. Wt.  |
|--------------|---|-----------|
| 2987-040-L   | LH NH3 (3/8") Tube Kit                                      | .395 lbs  |
| 2987-040-R   | RH NH3 (3/8") Tube Kit                                      | .395 lbs  |
| 2987-041-L   | LH NH3 w/ Liquid (3/8" Dual) Tube Kit                       | .697 lbs  |
| 2987-041-R   | RH NH3 w/ Liquid (3/8" Dual) Tube Kit                       | .697 lbs  |
| 2987-042-L   | LH NH3 w/ Vapor (3/8" & 3/4") Tube Kit                      | .954 lbs  |
| 2987-042-R   | RH NH3 w/ Vapor (3/8" & 3/4") Tube Kit                      | .954 lbs  |
| 2987-043-L   | LH NH3 w/ Liquid & Vapor (3/8" Dual & 3/4" Single) Tube Kit | 1.044 lbs |
| 2987-043-R   | RH NH3 w/ Liquid & Vapor (3/8" Dual & 3/4" Single) Tube Kit | 1.044 lbs |
| 2987-044-L   | LH Vapor Only (3/4") Tube Kit                               | .455 lbs  |
| 2987-044-R   | RH Vapor Only (3/4") Tube Kit                               | .455 lbs  |
| 2987-046     | Liquid (1/2" Single) Tube Kit                               | .425 lbs  |
| 2987-047     | Liquid (1/2" Dual) Tube Kit                                 | .850 lbs  |
| 2987-050     | Dry (1-1/2") Tube Kit                                       | 1.159 lbs |
| 2987-051     | Dry w/ NH3 (1-1/2" & 3/8") Tube Kit                         | 1.404 lbs |
| 2987-052     | Dry w/ NH3 & Vapor (1-1/2" & 3/8" & 3/4") Tube Kit          | 1.987 lbs |
| 2987-053     | Dry (1-1/2") Tube Kit                                       | 2.55 lbs  |
| 10000-050-LH | LH 10000 Magnum™ Dry Tube Assembly kit                      | 1.5 lbs   |
| 10000-050-RH | RH 10000 Magnum™ Dry Tube Assembly Kit                      | 1.5 lbs   |

### Section C:

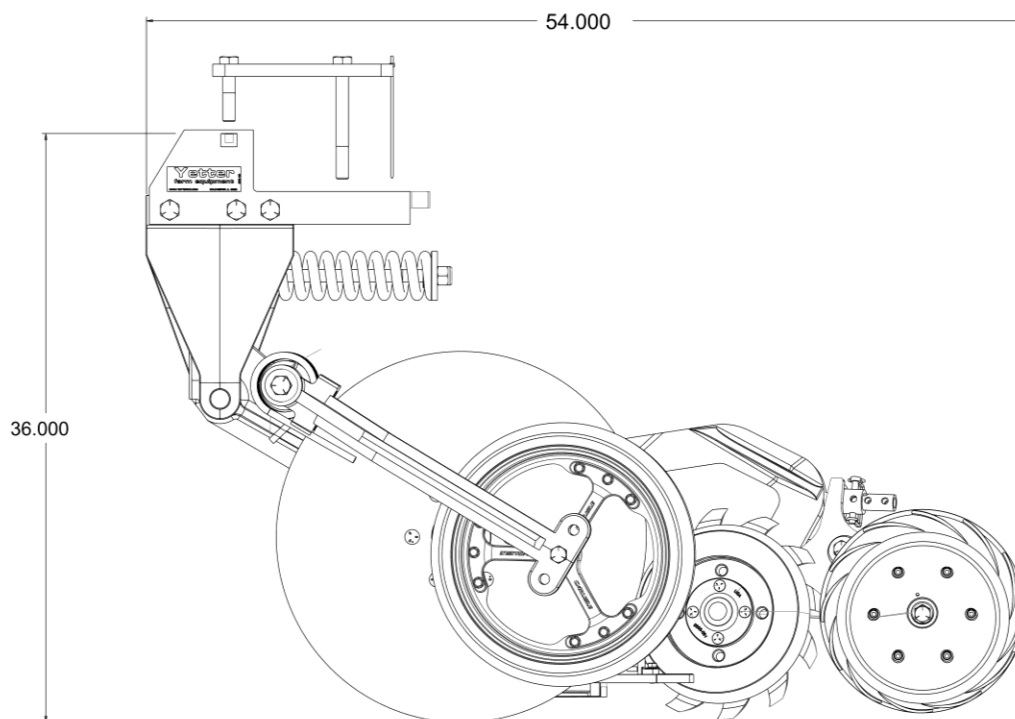
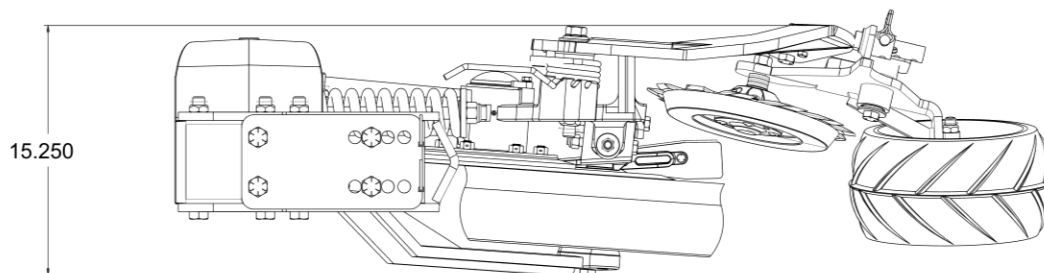
| Model No. | Description                        | Est Wt. |
|-----------|------------------------------------|---------|
| 10000-011 | 4" Tall Toolbar Mount Hardware Kit | 4 lbs   |
| 10000-012 | 5" Tall Toolbar Mount Hardware Kit | 4.1 lbs |
| 10000-013 | 6" Tall Toolbar Mount Hardware Kit | 4.3 lbs |
| 10000-014 | 7" Tall Toolbar Mount Hardware Kit | 4.5 lbs |

### Optional Equipment:

|                |  |          |
|----------------|--|----------|
| 10000-020-LH   | LH Walking Tandem* Wheel Conversion Kit                  | 28.5 lbs |
| 10000-020-RH   | RH Walking Tandem* Wheel Conversion Kit                  | 28.5 lbs |
| ^^10000-080-LH | LH Residue Manager Mount bracket for 10000 Series Magnum | 20 lbs   |
| ^^10000-080-RH | RH Residue Manager Mount bracket for 10000 Series Magnum | 20 lbs   |
| 10000-099      | 2" Drop Down Kit (Wheel tracks for Magnum)               | 17 lbs   |

# GENERAL INFORMATION

## 10000 Magnum™ Fertilizer Coulter



# ASSEMBLY INSTRUCTIONS



**WARNING:** Never work under the toolbar while in a raised position without using safety lockups.



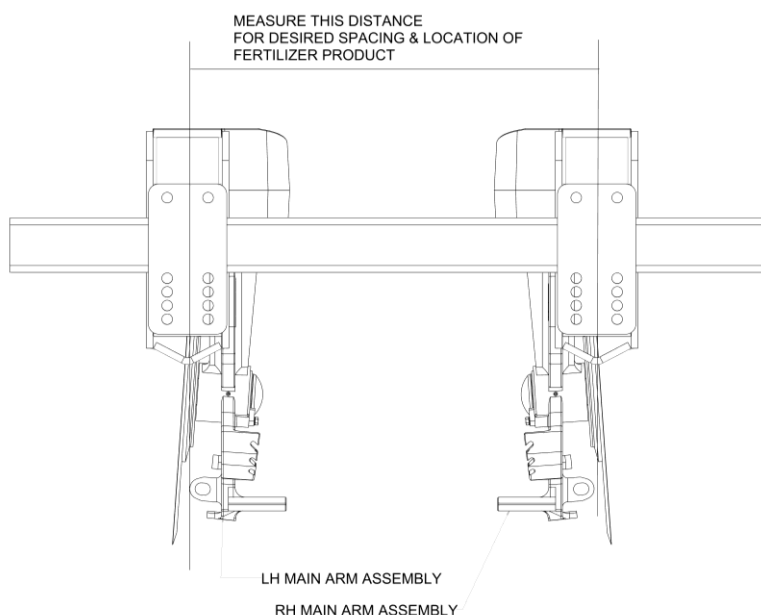
**WARNING:** Use extreme caution, the blade is sharp and may cause bodily injury. The coulter can be mounted to the toolbar using different techniques. One way is to mount the main arm assembly to the toolbar and then attach the components one at a time. Another way is to completely assemble the coulter before attaching to the toolbar frame.



**CAUTION:** 10000 Magnum™ Fertilizer Coulter and its components are very heavy. Extra attention to lifting techniques while handling and or maneuvering the coulter during assembly is very important. **Failure to do so may lead to personal injury or death.**

**STEP 1:** Mark the toolbar frame as to the location that each coulter is to be mounted.

**IMPORTANT:** Install an equal quantity of right hand and left hand coulters to each section of the toolbar. Example: A 30' – 3 section toolbar with 12 coulters (6R & 6L) will need to install 2R and 2L coulters on each section of the toolbar. If any questions concerning assembly of coulters, then please contact Yetter Farm Equipment for recommendations at 800-447-5777.



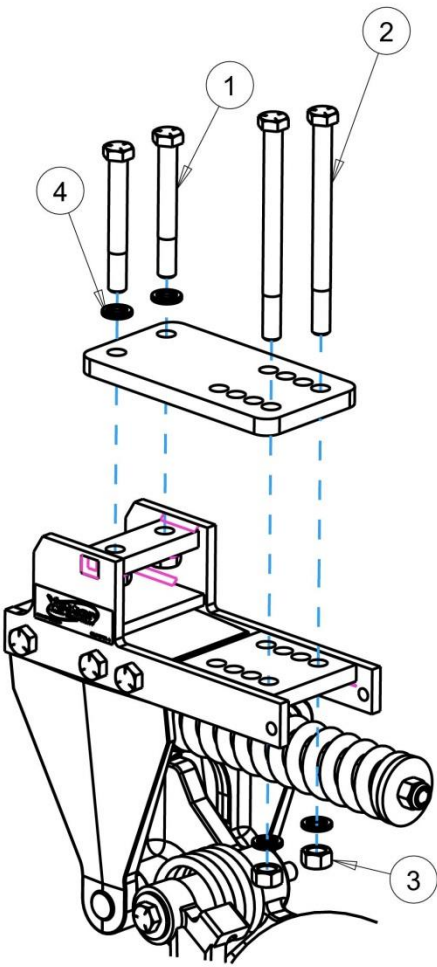
**Note:** The coulter blade is in line with the center of the mount bracket. Measure from left edge to left edge or from right edge to right edge to ensure the coulters are mounted at the desired spacing.



# ASSEMBLY INSTRUCTIONS

**STEP 2:** Attach the 10000 Series Magnum™ to the toolbar using the appropriate clamp and hardware.

## HARDWARE KITS PART IDENTIFICATION



10000-011 4" TALL TOOLBAR MOUNT KIT

| ITEM | PART NO. | DESCRIPTION                     | QTY |
|------|----------|---------------------------------|-----|
| 1    | 2502-401 | 3/4-10 X 3-1/2 HHCS GRADE 5, ZP | 2   |
| 2    | 2502-509 | 3/4-10 X 7 HHCS GRADE 5, ZP     | 2   |
| 3    | 2520-506 | 3/4-10 HEX NUT, GR 8, ZP        | 2   |
| 4    | 2525-501 | 3/4 MED LOCKWASHER ZP           | 4   |

10000-012 5" TALL TOOLBAR MOUNT KIT

| ITEM | PART NO. | DESCRIPTION                     | QTY |
|------|----------|---------------------------------|-----|
| 1    | 2502-404 | 3/4-10 X 4 HHCS GRADE 5, ZP     | 2   |
| 2    | 2502-408 | 3/4-10 X 7-1/2 HHCS GRADE 5, ZP | 2   |
| 3    | 2520-506 | 3/4-10 HEX NUT, GR 8, ZP        | 2   |
| 4    | 2525-501 | 3/4 MED LOCKWASHER ZP           | 4   |

10000-013 6" TALL TOOLBAR MOUNT KIT

| ITEM | PART NO. | DESCRIPTION                 | QTY |
|------|----------|-----------------------------|-----|
| 1    | 2502-507 | 3/4-10 X 5 HHCS GRADE 5, ZP | 2   |
| 2    | 2502-514 | 3/4-10 X 9 HHCS GRADE 5, ZP | 2   |
| 3    | 2520-506 | 3/4-10 HEX NUT, GR 8, ZP    | 2   |
| 4    | 2525-501 | 3/4 MED LOCKWASHER ZP       | 4   |

10000-014 7" TALL TOOLBAR MOUNT KIT (SHOWN)

| ITEM | PART NO. | DESCRIPTION                     | QTY |
|------|----------|---------------------------------|-----|
| 1    | 2502-510 | 3/4-10 X 6 HHCS GRADE 5, ZP     | 2   |
| 2    | 2502-516 | 3/4-10 X 9-1/2 HHCS GRADE 5, ZP | 2   |
| 3    | 2520-506 | 3/4-10 HEX NUT, GR 8, ZP        | 2   |
| 4    | 2525-501 | 3/4 MED LOCKWASHER ZP           | 4   |

ISO-10000-011

# OPERATION INSTRUCTIONS

## TOOLBAR FRAME HEIGHT ADJUSTMENT

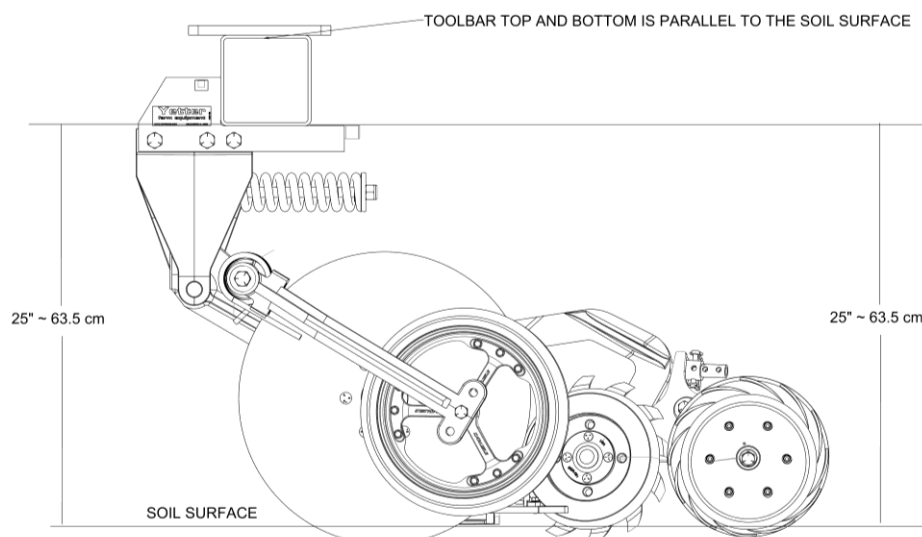


FIGURE A (CORRECT)

Adjusting Opener Depth:

- Raise toolbar frame for shallow application
- Lower toolbar frame for deeper application

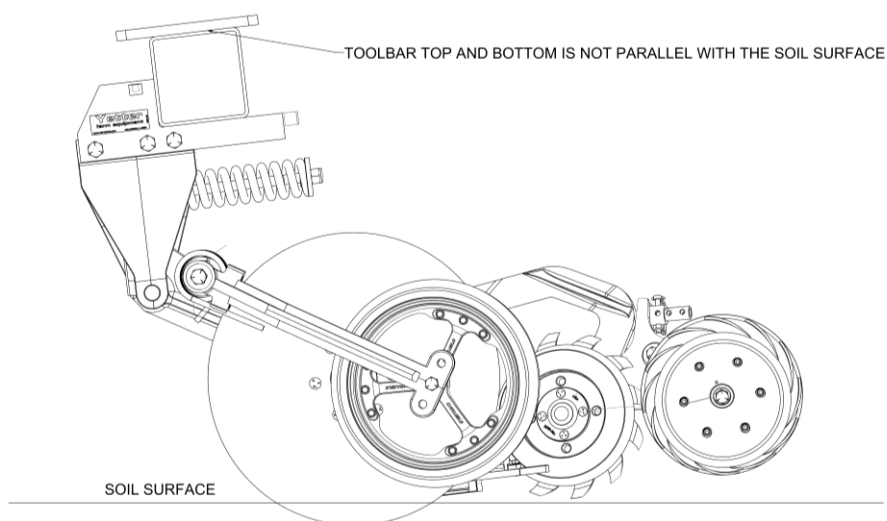


FIGURE B (INCORRECT)

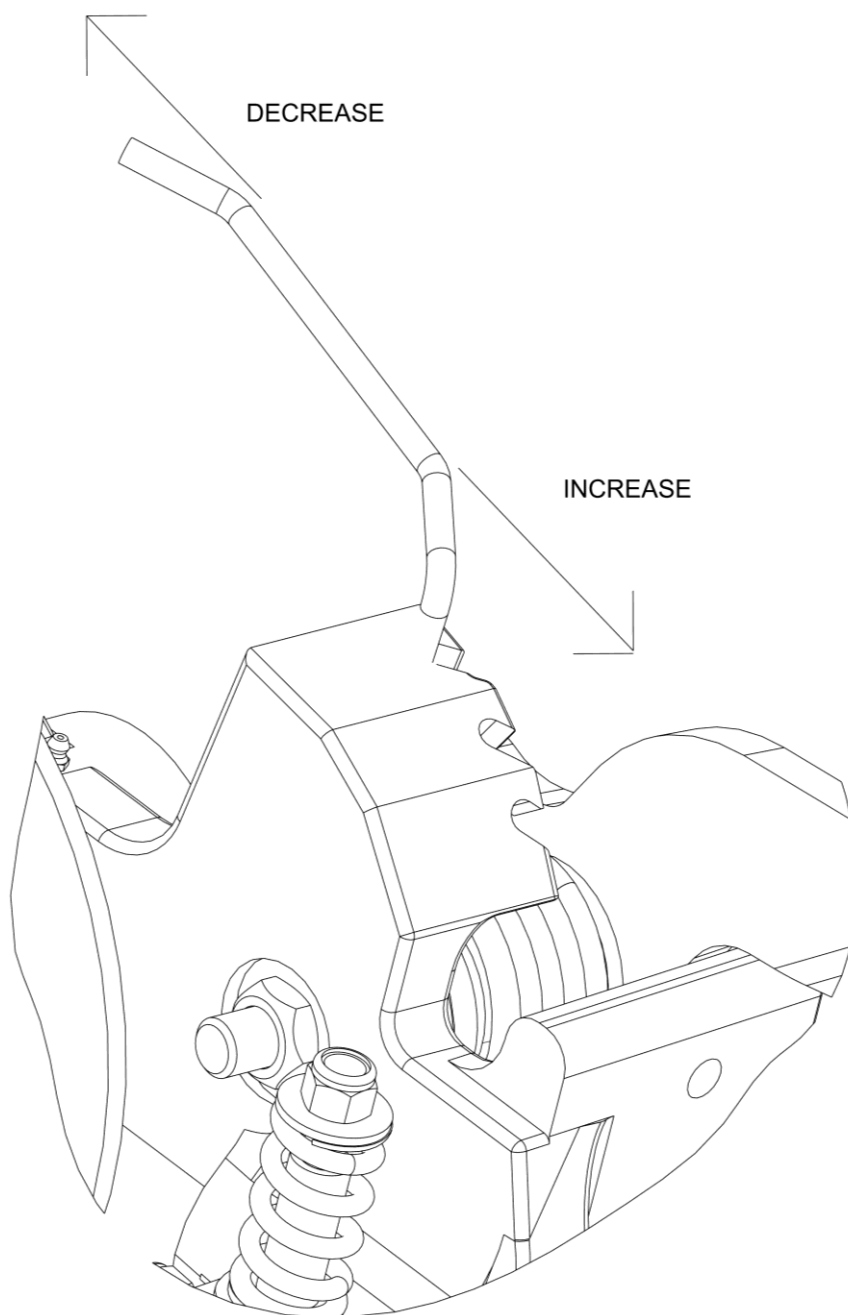
**Figure A:** The toolbar height is set to 25" above the soil surface. To ensure that frame heights are correct, it is important measurements are taken before use.

**Figure B:** The hitch is set too low while the toolbar is not parallel with the soil surface.

**Note:** The illustrations are intended to show that the settings are critical. **Tool frame levelness and height adjustment are very important settings for correct performance of the 10000 Magnum™ Coulter**

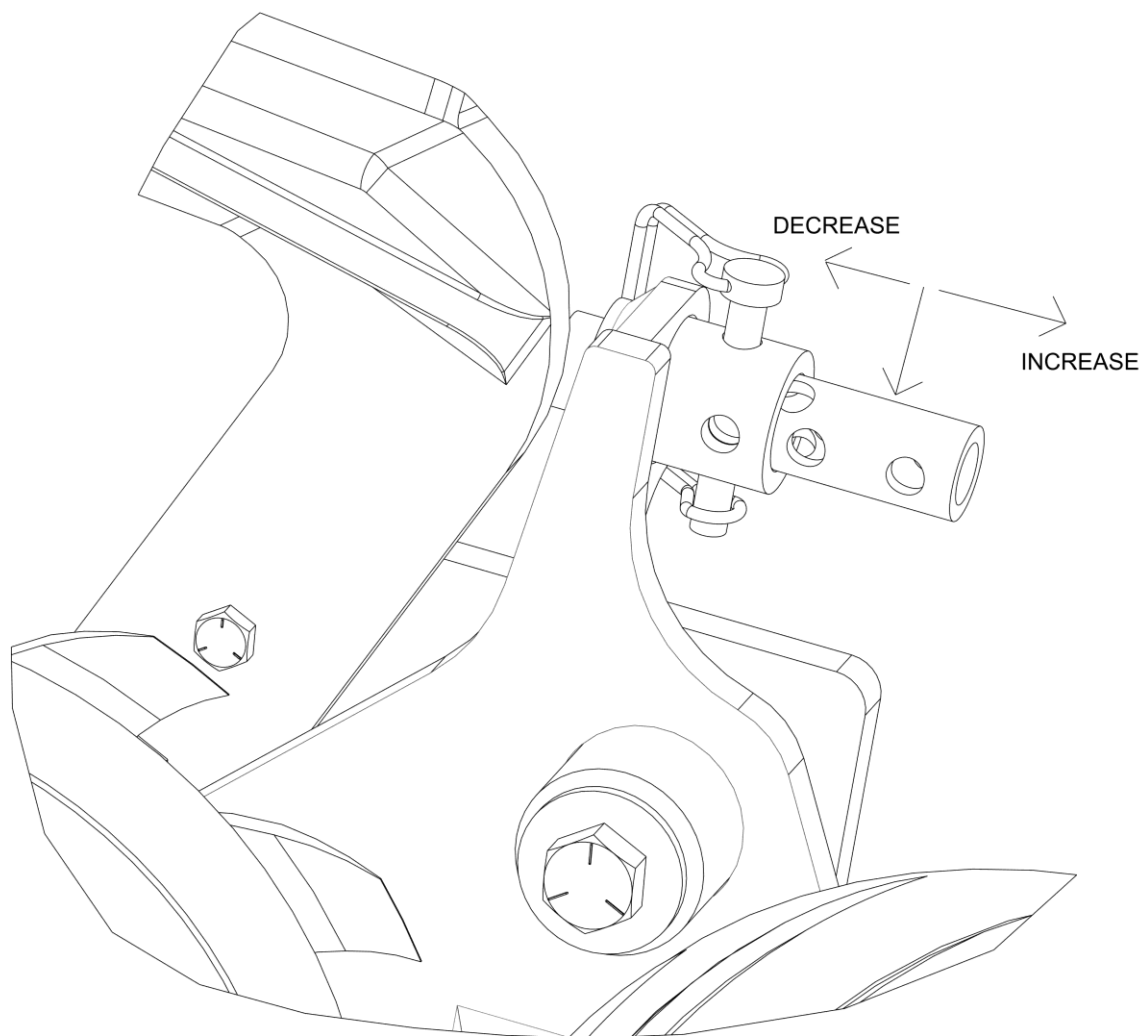
## OPERATION INSTRUCTIONS

### 10000 MAGNUM™ CLOSING WHEEL DOWNFORCE ADJUSTMENT



## OPERATION INSTRUCTIONS

### 10000 MAGNUM™ WHEEL SEALER DEPTH ADJUSTMENT



# OPERATION INSTRUCTIONS

## Troubleshooting the 10000 Series Magnum™ Coulter

| Symptom   | Problem   | Solution  |
|---|---|---|
| Mud builds up on press wheels and wheels stop turning | Too much down pressure                            | Remove spring pressure from press wheels  |
|   | Field is too wet                                  | Wait until field dries before running   |
| Poor opener penetration                               | Hard ground conditions                            | Add weights to toolbar frame  |
|   | Residue laying in bunches                         | Spread residue evenly across the field  |
|   | Excessive residue                                 | Adjust toolbar for deeper operation   |
|   | Dull disk openers                                 | Sharpen or replace opener disks   |
| Furrow not closing                                    | Disk opener worn too small                        | Replace disk opener   |
|   | Field is too wet or overly hard ground conditions | Adjust closing wheel spring pressure  |
| Soil freezes to blade                                 |   | Raise toolbar when stopping to prevent anhydrous ammonia from contacting and freezing soil to blade |
| Residue buildup in front of openers                   | Residue wedged between scraper and disk opener    | Verify adjustment bolt is properly adjusted to hold scraper against blade                           |
| Uneven depth  | Residue laying in bunches                         | Spread residue evenly across field  |
|   | In adequate down pressure                         | Increase down pressure or install weights   |

# MAINTENANCE

## Practice Safety

Understand and practice safe service procedures before doing work. Follow ALL the operating, maintenance, and safety information in the equipment operator's manual. Clear the area of bystanders, especially small children, when performing any maintenance or adjustments. Keep work area clean and dry. Use adequate lighting for the job. Use only tools, jacks, and hoists of sufficient capacity for the job.

Never lubricate, service, or adjust a machine while it is moving. Keep hands, feet, and clothing free from power-driven moving parts. Disengage all power and operate controls to relieve pressure. Lower equipment to the ground and stop the engine. Remove the key. Wait for all moving parts to stop before servicing, adjusting, repairing, or unplugging.

Securely support any machine elements with blocks or safety stands that must be raised for service work.

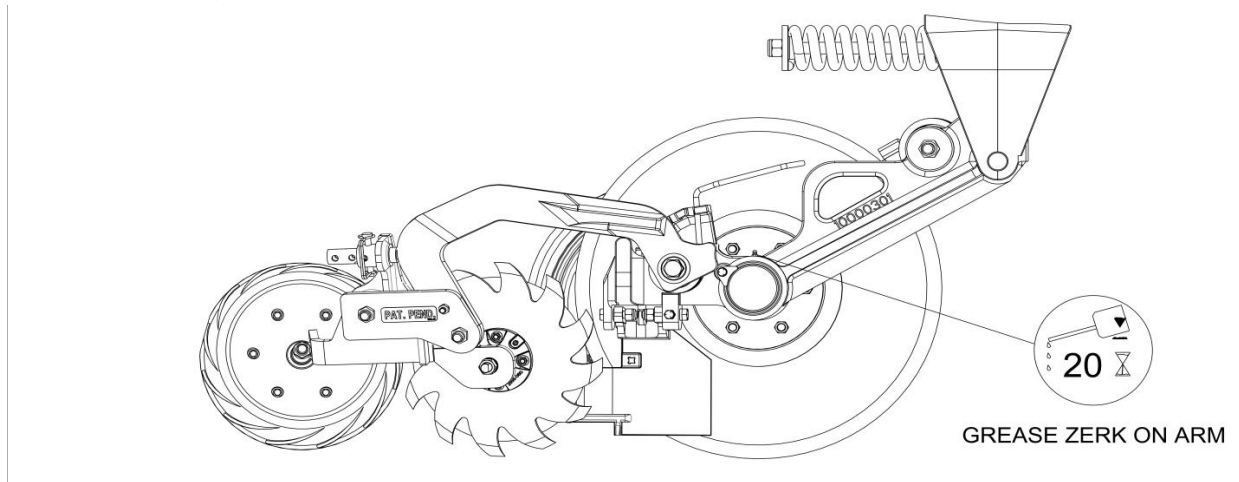
Keep all parts in good condition and properly installed. Fix damaged equipment immediately. Replace worn or broken parts. Remove any buildup of grease, oil, or debris from the equipment.

Make sure all guards are in place and properly secured when maintenance work is completed.

# MAINTENANCE

## Lubrication Intervals

Lubricate with grease at hourly interval indicated on symbol.



**IMPORTANT:** The recommended service intervals are based on normal operating conditions. Severe or unusual conditions may require more frequent lubrication.

Perform each lubrication and service procedure at the beginning of each season. Clean grease fittings before using grease gun to avoid injecting dirt and grit into the bearing. Replace and lost or broken fittings immediately. If a fitting fails to take grease, remove and clean thoroughly, replace if necessary. Also check for failure of adjoining parts.

## MAINTENANCE

### Lubrication



**CAUTION:** To help prevent serious injury or death to you or others, service machinery on a level surface. Lower machine to ground or sufficiently lock or block raised machine before servicing. If machine is connected to tractor, engage parking brake and place transmission in “PARK”, shut off engine and remove key. If machine is detached from tractor, block wheels and use jack stands to prevent movement.



**CAUTION:** Do not clean, lubricate, or adjust machine while in motion.

Use grease based on NLGI consistency number and the expected air temperature range during operation.

Use a **multi-purpose polyurea, water resistant, moderate speed, and NLGI grade #2** grease. Other greases may be used if they meet the **NLGI performance standard**.

**IMPORTANT:** Some types of grease thickener are not compatible with others. Consult your grease supplier before mixing different types of grease.

### Alternative Lubricants

Conditions in certain geographical areas may require special lubricants and lubrication practices which do not appear in the operator's manual. If there are any questions, consult Yetter Manufacturing Co. to obtain the latest information and recommendations.

| Part #                       | Description               | Ounces of Grease |
|------------------------------|---------------------------|------------------|
| 10000-111-LH<br>10000-111-RH | Main Arm, Magnum Assembly | 18 oz            |

### Storing Lubricants

Your machine can operate at top efficiency only if clean lubricants are used.

Use clean containers to handle all lubricants.

**Store them in an area protected from dust, moisture, and other contaminants.**



## **MAINTENANCE**

### **Storing the Equipment**

Store the machine in an area away from human activity.

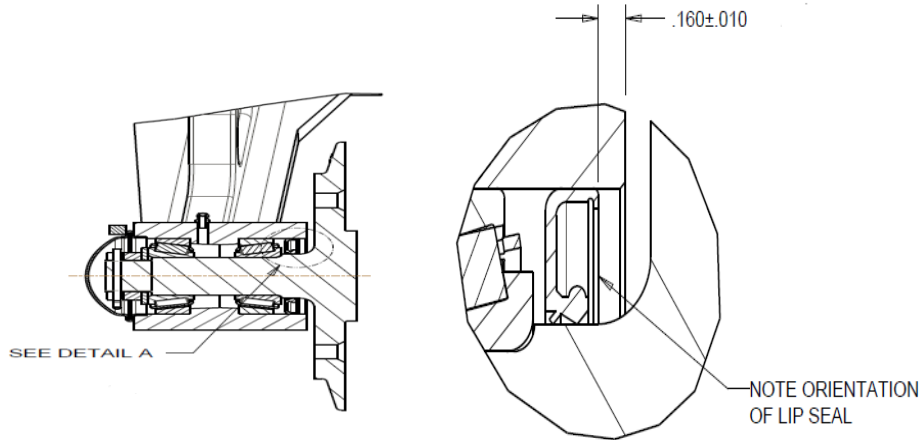
Store the machine in a RAISED position.

Install service locks on all wheel cylinders.

At the end of the season the machine should be thoroughly inspected and prepared for storage. Repair or replace any worn or damaged components to prevent down time at the beginning of the following season. Store machine under cover with all parts in operating condition.

- Clean machine thoroughly to remove all dirt, debris, and crop residue.
- Inspect machine for worn or broken parts. See your Yetter Farm Equipment dealer during the off-season so parts and service can be acquired when the machine is not needed in the field.
- Lubricate bearings as outlined in the lubrication section.
- Paint all parts which are chipped or worn to prevent rust.
- Store machine in a clean, dry location with the unit out of the sun.
- If the machine cannot be stored inside, cover with a waterproof tarpaulin and tie securely in place
- Do not allow children to play on or around the machine

# MAINTENANCE



## BEARING ADJUSTMENT:

1. Raise the toolbar until the blade is clear of the ground. Place a safety stand under the toolbar. Remove the blade. Remove the hub cap, cotter pin, slotted nut, washer and spacer from the spindle shaft assembly.
2. Pull the coulter spindle shaft assembly from the hub. Remove bearing cones and seal.
3. Wash the old grease from the hub, bearing cups, coulter spindle shaft, seal and bearing cones. Inspect the condition of bearing cups, cones and seal. Replace if necessary.
4. Apply #2 multi-purpose **polyurea** grease on each bearing. Make sure the space around each roller is filled. Lubricate the bearing cups.
5. Position the bearing in the cup and install the seal. Lubricate the seal lips and proceed with re-assembly of the removed parts including the blade. Blade bolt torque is 90 - 96 ft/lbs.
6. While rotating the spindle, tighten/torque the slotted nut to 15-20 ft/lbs. to pre-load the bearings. Loosen the slotted nut ½ turn to release the pre-load.
7. While rotating the spindle, tighten the slotted nut until the next castellation opening on the nut is aligned with a hole in the spindle. Install the cotter pin and bend the ends of the pin around the nut.
8. Check the spindle rotation, if the spindle rotates freely then install hub cap, retainer, bolt and lock washer. If the spindle is difficult to turn and/or roughness is felt then replace the bearings and cups as required.

## KNIFE WEAR:

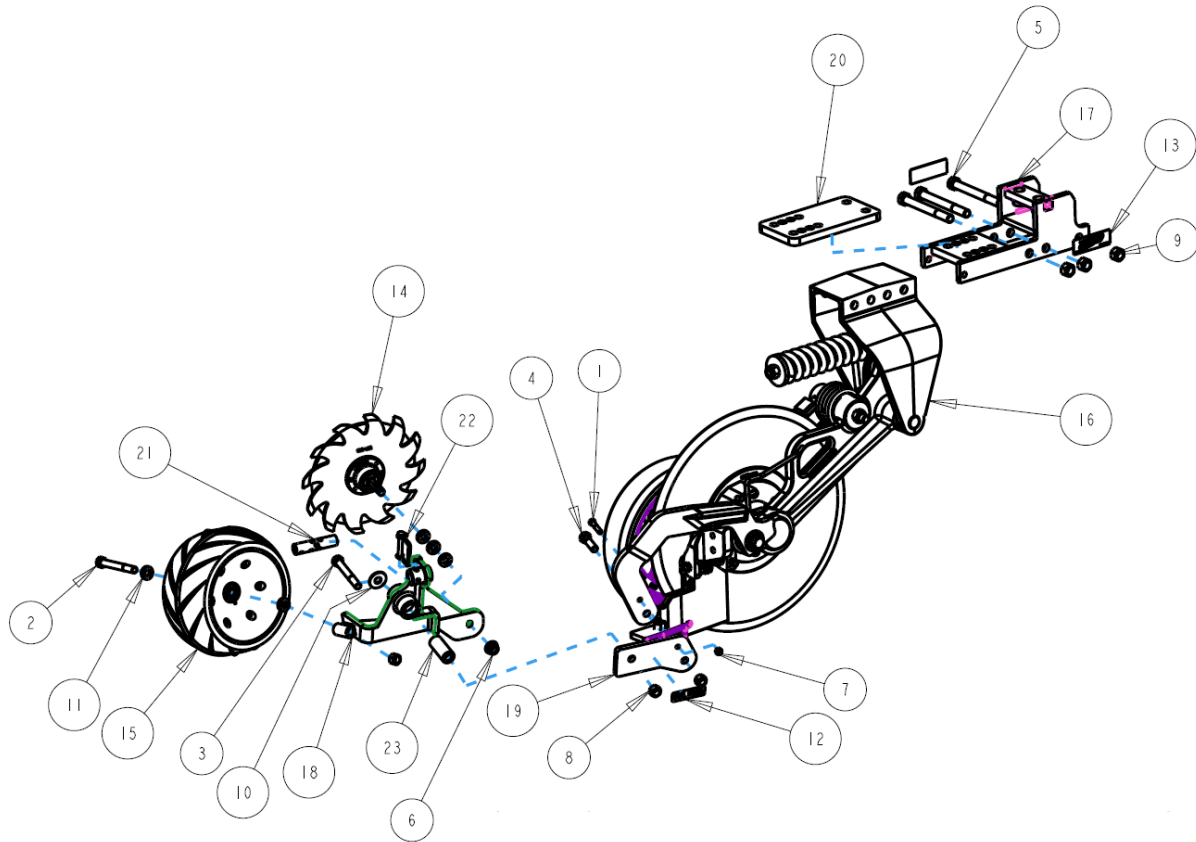
The lower portion of the scraper and tube are subject to wear during operation. The rate of wear will depend on a variety of factors and in abrasive hard soil conditions the wear will be more rapid.

NOTE: In certain areas, replacement knives should be kept in stock, replacing worn knives as needed.

**ADJUST KNIFE TO BLADE CONTACT** on each opener so the blade will turn by hand with slight resistance, but will not coast or freewheel. In loose soil the knife adjustment is critical. If adjustment is not maintained, soil or residue may wedge between knife and blade, resulting in the blade not turning. Because of blade run out, rotate the blade one full revolution after adjustment. Re-adjust knife as needed. Never strike the knife with a heavy object or damage may occur. To adjust, use shims or adjust knife mounting out.

## PART IDENTIFICATION

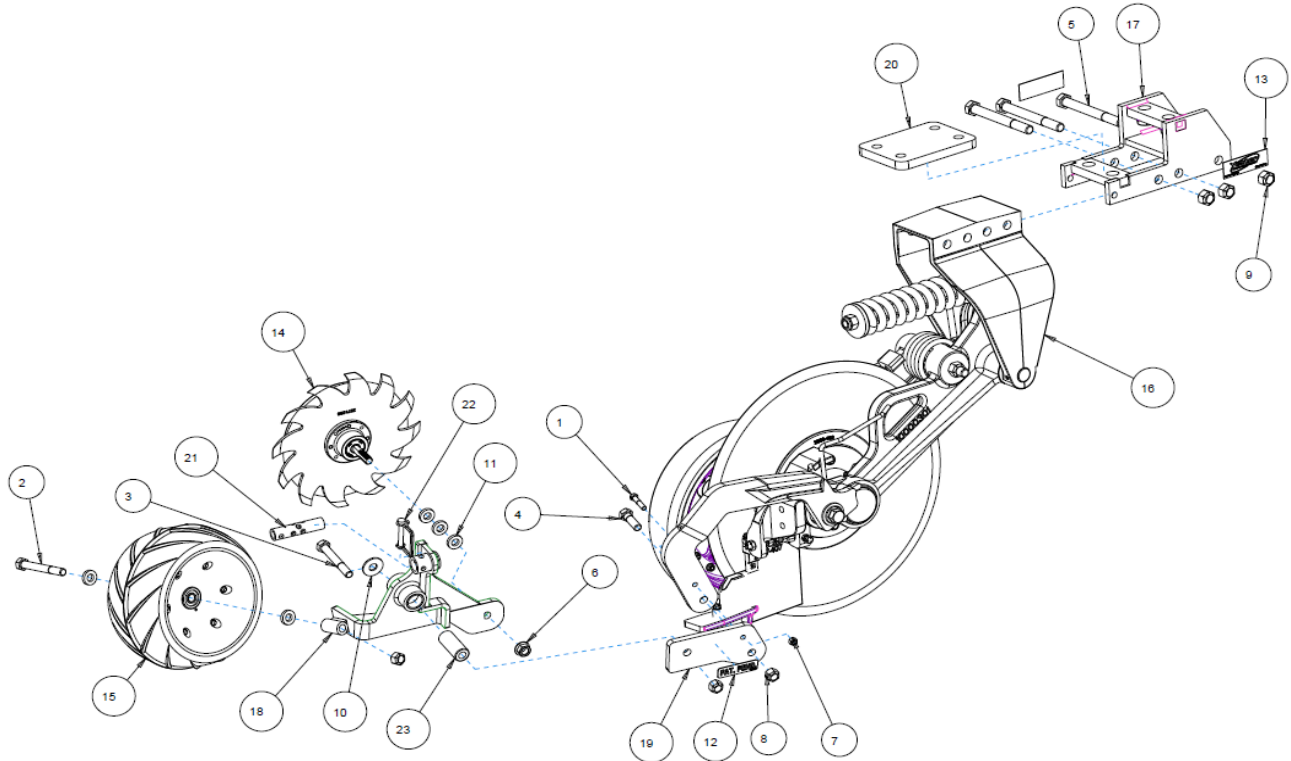
10000-001B-LH (SHOWN) LEFT HAND & 10000-001B-RH RIGHT HAND MAGNUM  
W/ WALKING TANDEM CLOSING SYSTEM  
4,5,6,7 WIDE TOOLBAR UNIVERSAL MOUNT



| ITEM | PART NO.     | DESCRIPTION                                 | QTY |
|------|--------------|---|-----|
| 1    | 2502-245     | 3/8-16 X 1-3/4 HHCS GR. 5                   | 1   |
| 2    | 2502-327     | 5/8-11 X 5 HHCS GR. 5                       | 1   |
| 3    | 2502-334     | 5/8-11 X 4-1/2 HHCS GR. 5                   | 1   |
| 4    | 2502-391     | 5/8-11 X 2 HHCS GR. 5                       | 1   |
| 5    | 2502-509     | 3/4-10 X 7 HHCS GR. 5                       | 3   |
| 6    | 2520-465     | 5/8-11 FLANGE NUT GR. 8                     | 1   |
| 7    | 2520-601     | 3/8-16 TOP LOCK HEX NUT GR. C               | 1   |
| 8    | 2520-603     | 5/8-11 TOP LOCK HEX NUT GR. C               | 3   |
| 9    | 2520-604     | 3/4-10 TOP LOCK HEX NUT GR. C               | 3   |
| 10   | 2526-451     | 5/8 FLAT WASHER                             | 1   |
| 11   | 2526-455     | WASHER 21/32" ID. X 1-1/4" OD. X 1/4" THICK | 5   |
| 12   | 2565-071     | PATENT DECAL                                | 1   |
| 13   | 2565-162     | YETTER DECAL                                | 2   |
| 14   | 2987-142-L   | LH CAST CLOSER WHEEL ASSEMBLY               | 1   |
| 15   | 6200-363     | 6.5 X 12 PRESS WHEEL ASSEMBLY               | 1   |
|      | 2570-069     | 40MM BEARING                                | 1   |
| 16   | 10000-100-LH | LH BASE ASSEMBLY                            | 1   |
| 17   | 10000-200    | TOOLBAR MOUNT 4,5,6,7                       | 1   |
| 18   | 10000-205-LH | LH TANDEM CLOSER PIVOT                      | 1   |
|      | 10000-332    | SLEEVE 1.5" OD. X 1.25" ID. X 0.75" WIDTH   | 2   |
| 19   | 10000-308    | TANDEM MOUNT PLATE                          | 1   |
| 20   | 10000-310    | CLAMP PLATE UNIVERSAL                       | 1   |
| 21   | 10000-330    | ADJUSTMENT TUBE                             | 1   |
| 22   | 10000-334    | 3/8" WIRE PIN                               | 1   |
| 23   | 10000-361    | SEALER PIVOT BUSHING                        | 1   |

## PART IDENTIFICATION

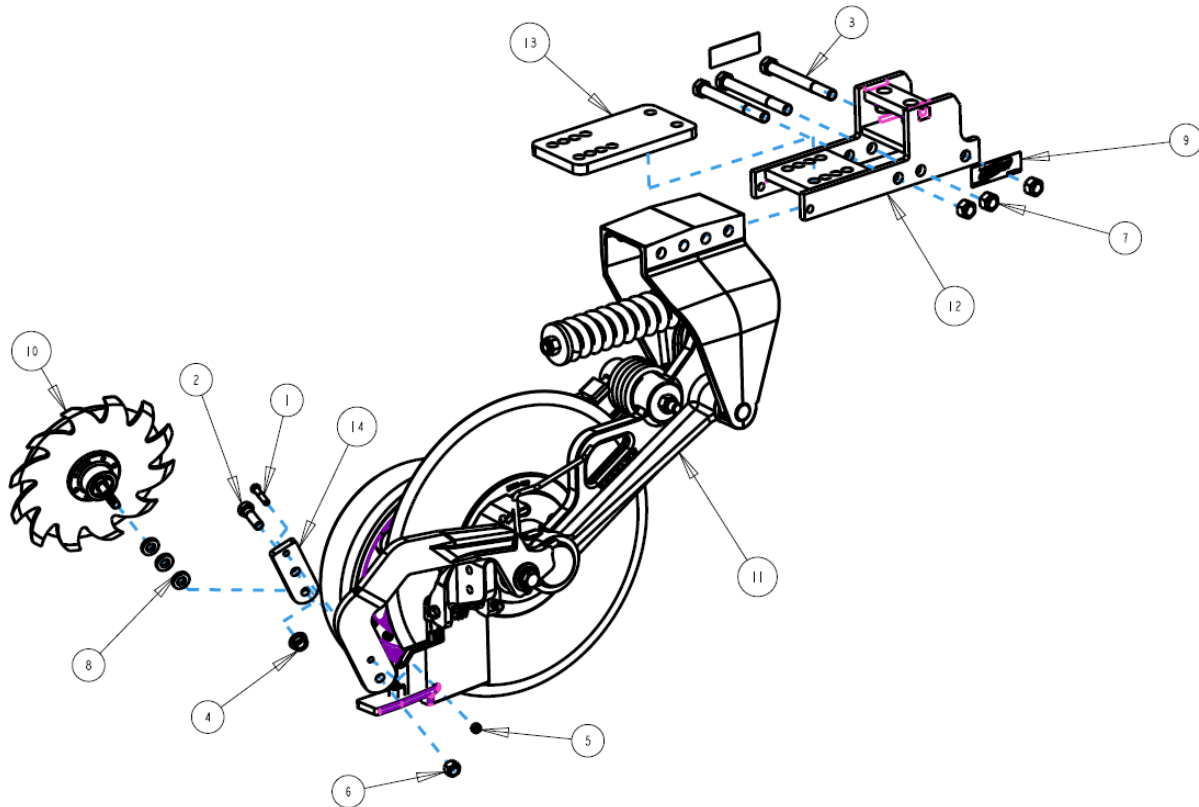
10000-002-LH (SHOWN) & 10000-002-RH  
MAGNUM w/ WALKING TANDEM  
4" WIDE TOOLBAR, SHORT MOUNT



| ITEM | PART NO.     | DESCRIPTION                               | QTY. |
|------|--------------|---|------|
| 1    | 2502-245     | 3/8-16 X 1-3/4 HHCS GR. 5                 | 1    |
| 2    | 2502-327     | 5/8-11 X 5 HHCS GR. 5                     | 1    |
| 3    | 2502-334     | 5/8-11 X 4-1/2 HHCS GR. 5                 | 1    |
| 4    | 2502-391     | 5/8-11 X 2 HHCS GR. 5                     | 1    |
| 5    | 2502-509     | 3/4-10 X 7 HHCS GR. 5                     | 3    |
| 6    | 2520-465     | 5/8-11 FLANGE HEX NUT GR. 8               | 1    |
| 7    | 2520-601     | 3/8-16 TOP LOCK HEX NUT GR. C             | 1    |
| 8    | 2520-603     | 5/8-11 TOP LOCK HEX NUT GR. C             | 3    |
| 9    | 2520-604     | 3/4-10 TOP LOCK HEX NUT GR. C             | 3    |
| 10   | 2526-451     | 5/8 FLAT WASHER                           | 1    |
| 11   | 2526-455     | WASHER 21/32 ID. X 1-1/4 OD. X 1/4 THK    | 5    |
| 12   | 2565-071     | PATENT DECAL                              | 1    |
| 13   | 2565-162     | YETTER DECAL                              | 2    |
| 14   | 2987-142-L   | LH CAST CLOSING WHEEL ASSEMBLY            | 1    |
| 15   | 6200-363     | 6.5 X 12 PRESS WHEEL ASSEMBLY             | 1    |
|      | 2570-069     | 40MM BEARING                              | 1    |
| 16   | 10000-100-LH | LH BASE ASSEMBLY                          | 1    |
| 17   | 10000-201    | 4" MOUNT                                  | 1    |
| 18   | 10000-205-LH | LH TANDEM CLOSER PIVOT                    | 1    |
|      | 10000-332    | SLEEVE 1.5" OD. X 1.25" ID. X 0.75" WIDTH | 2    |
| 19   | 10000-308    | TANDEM MOUNT PLATE                        | 1    |
| 20   | 10000-311    | CLAMP PLATE 4" TOOLBAR                    | 1    |
| 21   | 10000-330    | ADJUSTMENT TUBE                           | 1    |
| 22   | 10000-334    | 3/8" WIRE PIN                             | 1    |
| 23   | 10000-361    | SEALER PIVOT BUSHING                      | 1    |

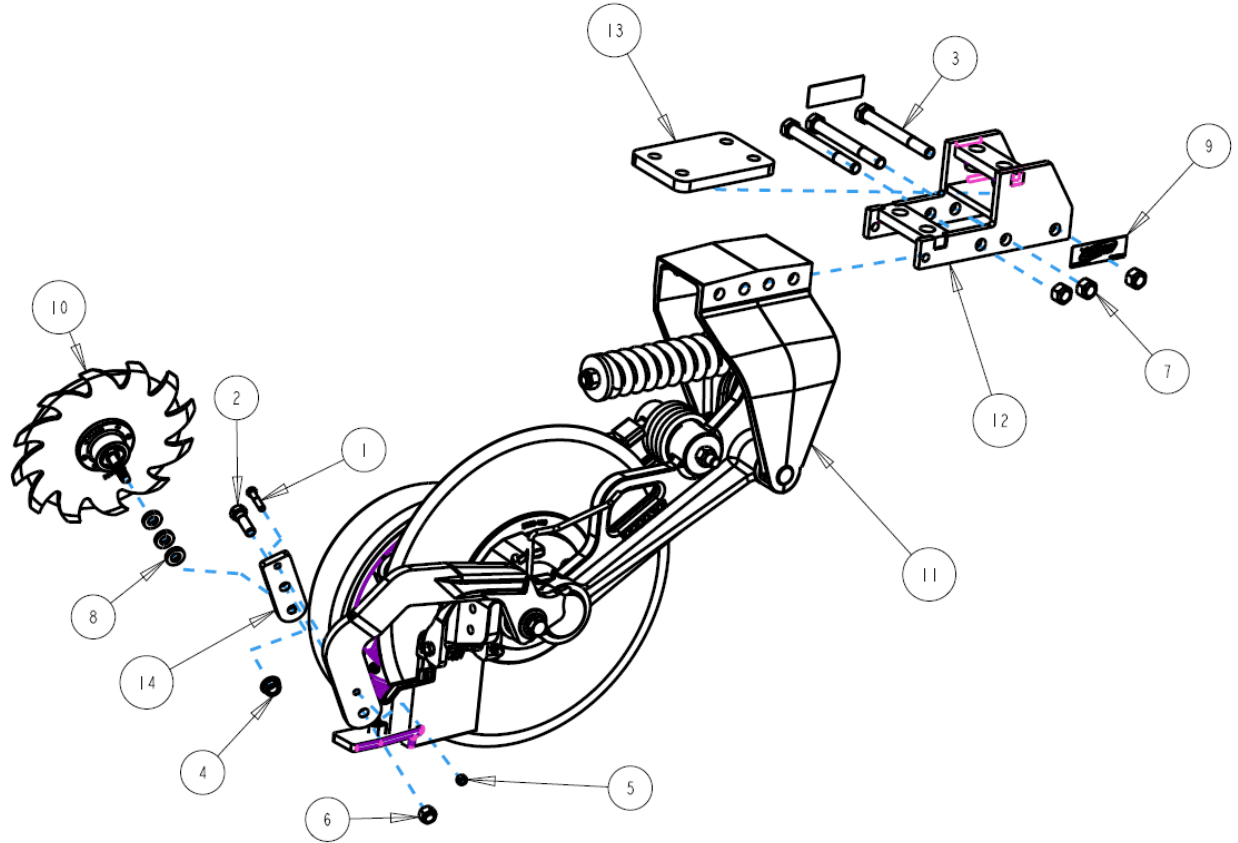
## PART IDENTIFICATION

10000-003-LH (SHOWN) & 10000-003-RH  
MAGNUM w/o WALKING TANDEM, 4", 5", 6", 7" WIDE TOOLBARS



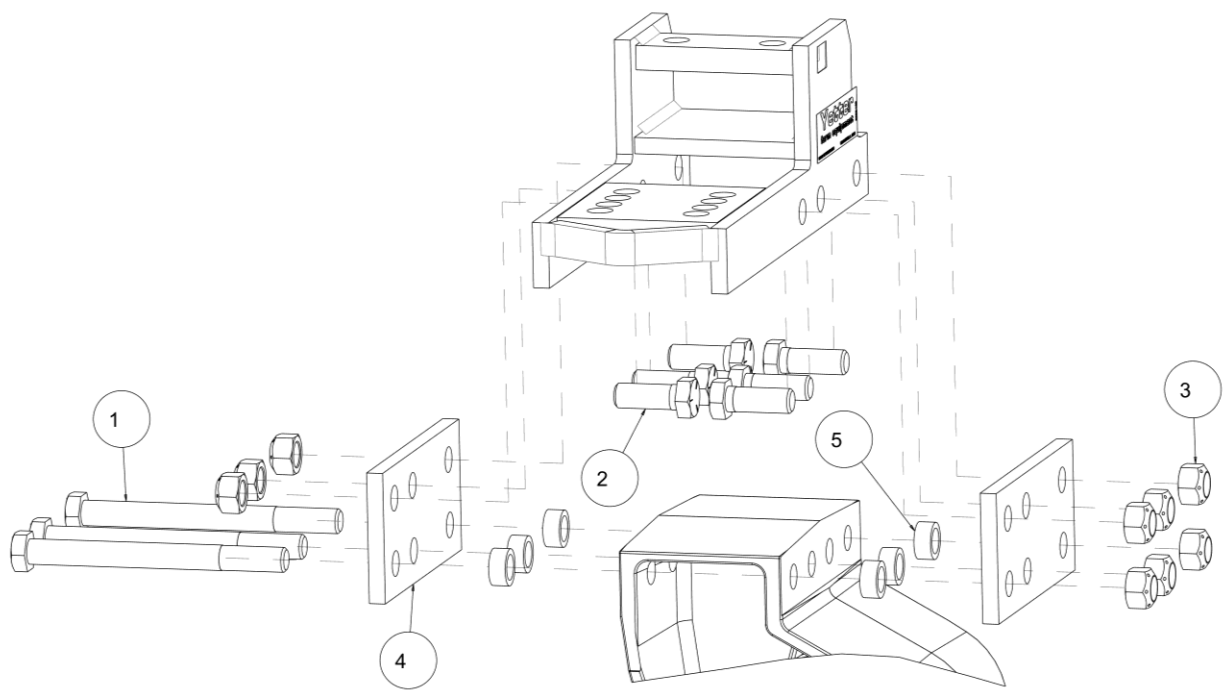
| ITEM | PART NO.     | DESCRIPTION                            | QTY |
|------|--------------|--|-----|
| 1    | 2502-245     | 3/8-16 X 1-3/4 HHCS GR. 5              | 1   |
| 2    | 2502-391     | 5/8-11 X 2 HHCS GR. 5                  | 1   |
| 3    | 2502-509     | 3/4-10 X 7 HHCS GR. 5                  | 3   |
| 4    | 2520-465     | 5/8-11 FLANGE HEX NUT GR. 8            | 1   |
| 5    | 2520-601     | 3/8-16 TOP LOCK HEX NUT GR. C          | 1   |
| 6    | 2520-603     | 5/8-11 TOP LOCK HEX NUT GR. C          | 1   |
| 7    | 2520-604     | 3/4-10 TOP LOCK HEX NUT GR. C          | 3   |
| 8    | 2526-455     | WASHER 21/32 ID. X 1-1/4 OD. X 1/4 THK | 3   |
| 9    | 2565-162     | YETTER DECAL                           | 2   |
| 10   | 2987-142-L   | LH CAST CLOSING WHEEL ASSEMBLY         | 1   |
| 11   | 10000-100-LH | LH BASE ASSEMBLY                       | 1   |
| 12   | 10000-200    | TOOLBAR MOUNT 4,5,6,7                  | 1   |
| 13   | 10000-310    | CLAMP PLATE UNIVERSAL                  | 1   |
| 14   | 10000-312    | CLOSER MOUNT PLATE                     | 1   |

**PART IDENTIFICATION**  
**10000-004-LH (SHOWN) & 10000-004-RH**  
**MAGNUM w/o WALKING TANDEM, 4" WIDE TOOLBARS, SHORT MOUNT**



| ITEM | PART NO.     | DESCRIPTION                            | QTY |
|------|--------------|--|-----|
| 1    | 2502-245     | 3/8-16 X 1-3/4 HHCS GR. 5              | 1   |
| 2    | 2502-391     | 5/8-11 X 2 HHCS GR. 5                  | 1   |
| 3    | 2502-509     | 3/4-10 X 7 HHCS GR. 5                  | 3   |
| 4    | 2520-465     | 5/8-11 FLANGE HEX NUT GR. 8            | 1   |
| 5    | 2520-601     | 3/8-16 TOP LOCK HEX NUT GR. C          | 1   |
| 6    | 2520-603     | 5/8-11 TOP LOCK HEX NUT GR. C          | 1   |
| 7    | 2520-604     | 3/4-10 TOP LOCK HEX NUT GR. C          | 3   |
| 8    | 2526-455     | WASHER 21/32 ID. X 1-1/4 OD. X 1/4 THK | 3   |
| 9    | 2565-162     | YETTER DECAL                           | 2   |
| 10   | 2987-142-L   | LH CAST CLOSING WHEEL ASSEMBLY         | 1   |
| 11   | 10000-100-LH | LH BASE ASSEMBLY                       | 1   |
| 12   | 10000-201    | TOOLBAR MOUNT 4 INCH                   | 1   |
| 13   | 10000-311    | CLAMP PLATE 4 INCH                     | 1   |
| 14   | 10000-312    | CLOSER MOUNT PLATE                     | 1   |

PART IDENTIFICATION  
10000-099  
2" DROP DOWN KIT



DROP DOWN KIT TO BE USED IN WHEEL TRACKS

| ITEM | PART #    |                                | DESCRIPTION | QTY |
|------|-----------|--------------------------------|-------------|-----|
| 1    | 2502-405  | 3/4-10 X 8 HHCS GR. 5 ZP       |             | 3   |
| 2    | 2502-503  | 3/4-10 X 2 HHCS GR.5 ZP        |             | 6   |
| 3    | 2520-604  | 3/4-10 HEX TOP LOCK, GR. C, ZP |             | 9   |
| 4    | 10000-348 | DROP-DOWN PLATE                |             | 2   |
| 5    | 10000-349 | BUSHING                        |             | 6   |

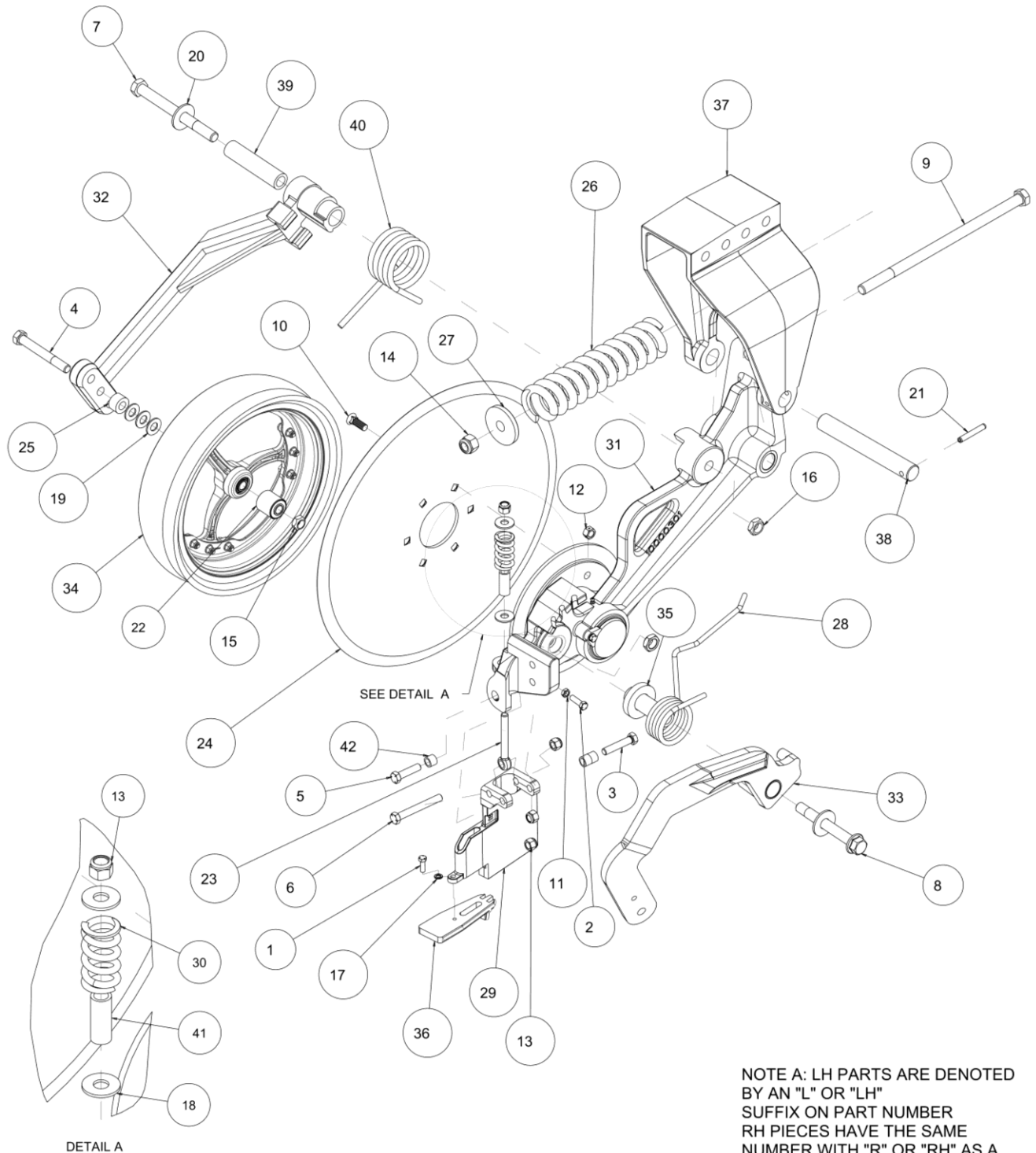
**PART IDENTIFICATION**  
**10000-100-LH (SHOWN) & 10000-1000-RH**  
**MAGNUM BASE ASSEMBLY**

| ITEM   | PART #       | DESCRIPTION                                 | QTY |
|--------|--------------|---|-----|
| 1      | 2502-198     | 5/16-18 X 1 HHCS GR.5 ZP                    | 1   |
| 2      | 2502-244     | 3/8-16 X 1-1/4 HHCS GR 5 ZP                 | 1   |
| 3      | 2502-296     | 1/2-13 X 2-1/2 HHCS GR5 ZP                  | 1   |
| 4      | 2502-327     | 5/8-11 X 5 HHCS GR.5 ZP                     | 1   |
| 5      | 2502-351     | 1/2-13 X 2 HHCS GR.5 ZP                     | 1   |
| 6      | 2502-364     | 1/2-13 X 4 HHCS GR. 5 ZP                    | 1   |
| 7      | 2502-405     | 3/4-10 X 8 HHCS GR. 5 ZP                    | 1   |
| 8      | 2502-426     | 3/4-10 X 6 HHFS GR8, ZP                     | 1   |
| 9      | 2502-525     | 3/4-10 X 16 HHCS GR. 5 ZP, 3" THREAD LENGTH | 1   |
| 10     | 2506-306     | 1/2-13 X 1-1/2 #3 REPAIRPLWBLT              | 6   |
| 11     | 2520-253     | 3/8-16 JAM HEX NUT ZP                       | 1   |
| 12     | 2520-357     | 1/2-13 LOCK HEX NUT, GR A, ZP               | 6   |
| 13     | 2520-363     | 1/2-13 NYL INSERT LOCKNUT, GR 2             | 4   |
| 14     | 2520-516     | 3/4-10NYLON INSERT LCKNT, GR 2, ZP          | 1   |
| 15     | 2520-603     | 5/8-11 HEX TOP LOCK                         | 1   |
| 16     | 2520-604     | 3/4-10 HEX TOP LOCK                         | 2   |
| 17     | 2525-201     | 5/16 MED. LOCKWASHER ZP.                    | 1   |
| 18     | 2526-351     | 1/2 STANDARD FLATWASHER ZP                  | 2   |
| 19     | 2526-453     | 5/8 SAE FLATWASHER ZP                       | 3   |
| 20     | 2526-501     | 3/4 STANDARD FLATWASHER ZP                  | 2   |
| 21     | 2530-208     | 3/8 X 2-1/2 ROLL PIN ZP                     | 1   |
| 22     | 2570-069     | 40MM BEARING - AN212132 (5203KYY2)          | 1   |
| 23     | 2570-447     | EYEBOLT, 1/2-13 X 4-1/4                     | 1   |
| 24     | 2571-279     | .256 X 22.60" COULTER BLADE                 | 1   |
| 25     | 2967-302     | SPACER, 3/4" PLATED                         | 1   |
| 26     | 2986-342     | COMPRESSION SPRING, AVENGER                 | 1   |
| 27     | 2986-405     | SPRING BUSHING                              | 1   |
| (A) 28 | 2987-395-L   | PAINTED LH CLSNG ARM TORS SPRG              | 1   |
| 29     | 2987-407     | LH SIDE KNIFE CAST, MACH W/CARB             | 1   |
| 30     | 3000-344     | 2-1/2" SPRING#LHL-1500B-2, BLK              | 1   |
| (A) 31 | 10000-111-LH | MAGNUM LH MAIN ARM, ASSEMBLY                | 1   |
| 32     | 10000-112    | WW ARM W/ BUSHING, ASSY                     | 1   |
| (A) 33 | 10000-113-LH | CLOSING ARM LH W/ BUSHING                   | 1   |
| 34     | 10000-114    | WIPER WHEEL                                 | 1   |
| 35     | 10000-203    | CLOSING PIVOT BUSHING                       | 1   |
| (A) 36 | 10000-250-LH | BEAVERTAIL LH W.A., 2IN                     | 1   |
| 37     | 10000-302    | MOUNT OFFEST MAGNUM, MACHINED               | 1   |
| 38     | 10000-307    | MAIN PIVOT PIN                              | 1   |
| 39     | 10000-309    | BUSHING, WIPER WHEEL PIVOT                  | 1   |
| (A) 40 | 10000-317-LH | MAGNUM WIPER WHEEL TORSION SPRING, LH       | 1   |
| 41     | 10000-333    | SPRING LIMITER BUSHING                      | 1   |
| 42     | 10000-347    | PIVOT BUSHING                               | 3   |

**MANUFACTURED 7/2016 – 2/2018**



**PART IDENTIFICATION**  
**10000-100-LH (SHOWN) & 10000-1000-RH**  
**MAGNUM BASE ASSEMBLY**



**MANUFACTURED 7/2016 – 2/2018**

# PART IDENTIFICATION

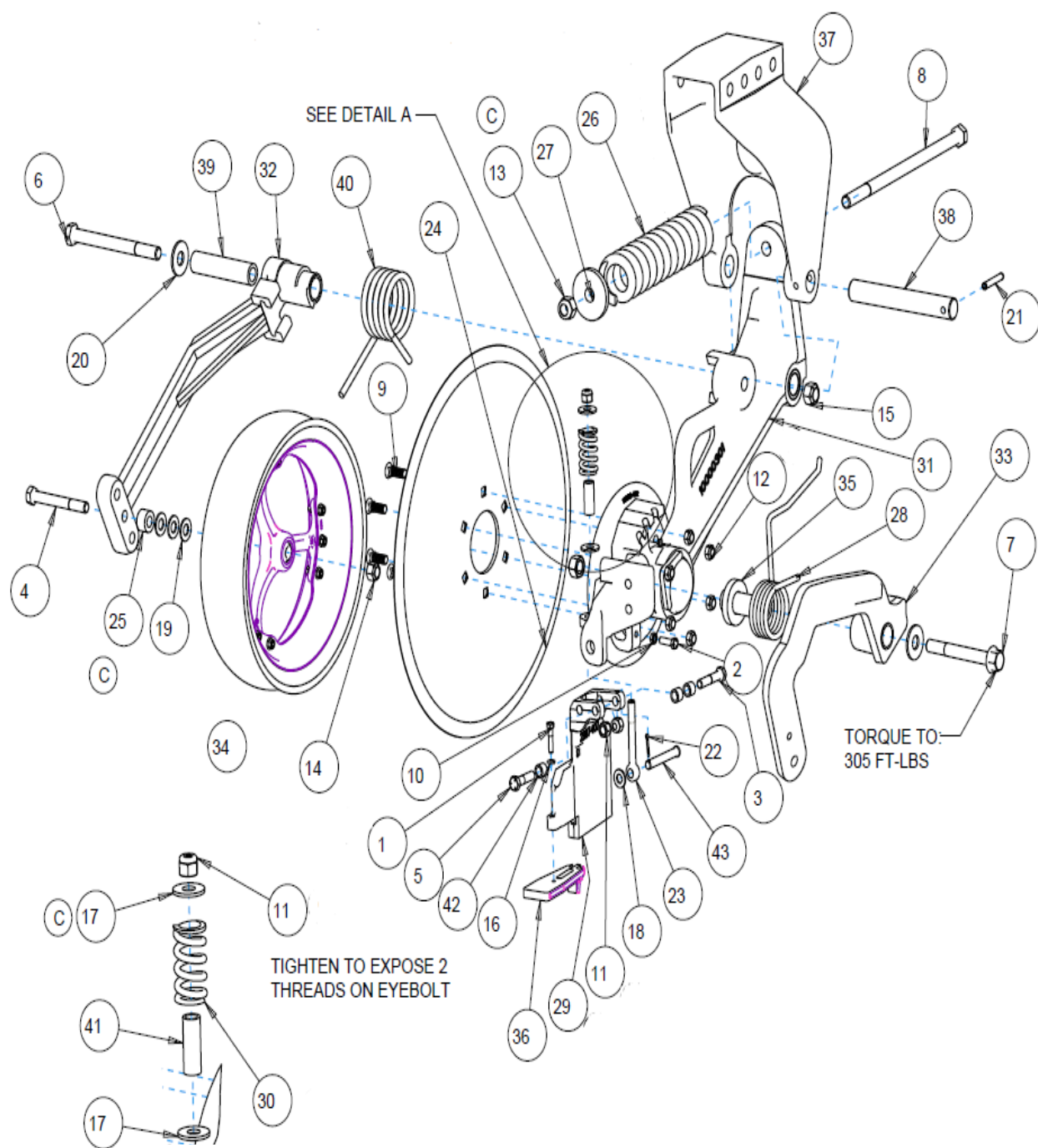
## 10000-100-LH

| ITEM | PART NO.     | DESCRIPTION                           | QTY |
|------|--------------|---------------------------------------|-----|
| 1    | 2502-206     | 5/16-18 X 1-1/2 HHCS GRADE 5          | 1   |
| 2    | 2502-244     | 3/8-16 X 1-1/4 HHCS GRADE 5           | 1   |
| 3    | 2502-296     | 1/2-13 X 2-1/2 HHCS GRADE 5           | 1   |
| 4    | 2502-327     | 5/8-11 X 5 HHCS GRADE 5               | 1   |
| 5    | 2502-351     | 1/2-13 X 2 HHCS GRADE 5               | 1   |
| 6    | 2502-405     | 3/4-10 X 8 HHCS GRADE 5               | 1   |
| 7    | 2502-426     | 3/4-10 X 6 HHCS GRADE 8               | 1   |
| 8    | 2502-525     | 3/4-10 X 6 HHFS GRADE 5 3" THREAD     | 1   |
| 9    | 2506-306     | 1/2-13 X 1-1/2 #3 PLOW BOLT           | 6   |
| 10   | 2520-253     | 3/8-16 JAM HEX NUT                    | 1   |
| 11   | 2520-359     | 1/2-13 NYLON LOCK HEX NUT GRADE N8    | 3   |
| 12   | 2520-362     | 1/2-13 LOCK HEX NUT GRADE C           | 6   |
| 13   | 2520-516     | 3/4-10 NYLON LOCK HEX NUT             | 1   |
| 14   | 2520-603     | 5/8-11 TOP LOCK HEX NUT               | 1   |
| 15   | 2520-604     | 3/4-10 TOP LOCK HEX NUT               | 2   |
| 16   | 2525-201     | 5/16 LOCKWASHER                       | 1   |
| 17   | 2526-351     | 1/2 STANDARD FLAT WASHER              | 2   |
| 18   | 2526-352     | 1/2 SAE FLAT WASHER                   | 1   |
| 19   | 2526-453     | 5/8 SAE FLAT WASHER                   | 3   |
| 20   | 2526-501     | 3/4 STANDARD FLAT WASHER              | 2   |
| 21   | 2530-208     | 3/8 X 2-1/2 ROLL PIN                  | 1   |
| 22   | 2531-107     | 1/8 X 1 COTTER PIN                    | 1   |
| 23   | 2570-447     | EYEBOLT 1/2-13 X 4-1/4                | 1   |
| 24   | 2571-279     | SMOOTH BLADE .256 X 22.60"            | 1   |
| 25   | 2967-302     | SPACER 3/4"                           | 1   |
| 26   | 2986-342     | COMPRESSION SPRING                    | 1   |
| 27   | 2986-405     | SPRING BUSHING                        | 1   |
| 28   | 2987-395-L   | LEFT HAND TORSION SPRING              | 1   |
| 29   | 2987-407     | LEFT HAND KNIFE                       | 1   |
| 30   | 3000-344     | 2-1/2" COMPRESSION SPRING             | 1   |
| 31   | 10000-111-LH | LEFT HAND MAIN ARM ASSEMBLY           | 1   |
| 32   | 10000-112    | WIPER WHEEL ARM ASSEMBLY              | 1   |
| 33   | 10000-113-LH | LEFT HAND CLOSING PIVOT ARM           | 1   |
| 34   | 10000-114    | WIPER WHEEL                           | 1   |
|      | 2570-069     | BEARING                               | 1   |
| 35   | 10000-203    | BUSHING, CLOSING ARM PIVOT            | 1   |
| 36   | 10000-250-LH | LEFT HAND BEAVERTAIL SEALER           | 1   |
| 37   | 10000-302    | MOUNT OFFSET                          | 1   |
| 38   | 10000-307    | PIVOT PIN 1.25" X 9.125"              | 1   |
| 39   | 10000-309    | BUSHING, WIPER WHEEL PIVOT            | 1   |
| 40   | 10000-317-LH | SPRING, LEFT HAND WIPER WHEEL TORSION | 1   |
| 41   | 10000-333    | BUSHING, SPRING LIMITER               | 1   |
| 42   | 10000-347    | BUSHING, KNIFE PIVOT                  | 3   |
| 43   | 10000-355    | PIN, 1/2 X 3.5                        | 1   |

**MANUFACTURED 3/2018 – PRESENT**

# PART IDENTIFICATION

## 10000-100-LH



**MANUFACTURED 3/2018 - PRESENT**

# PART IDENTIFICATION

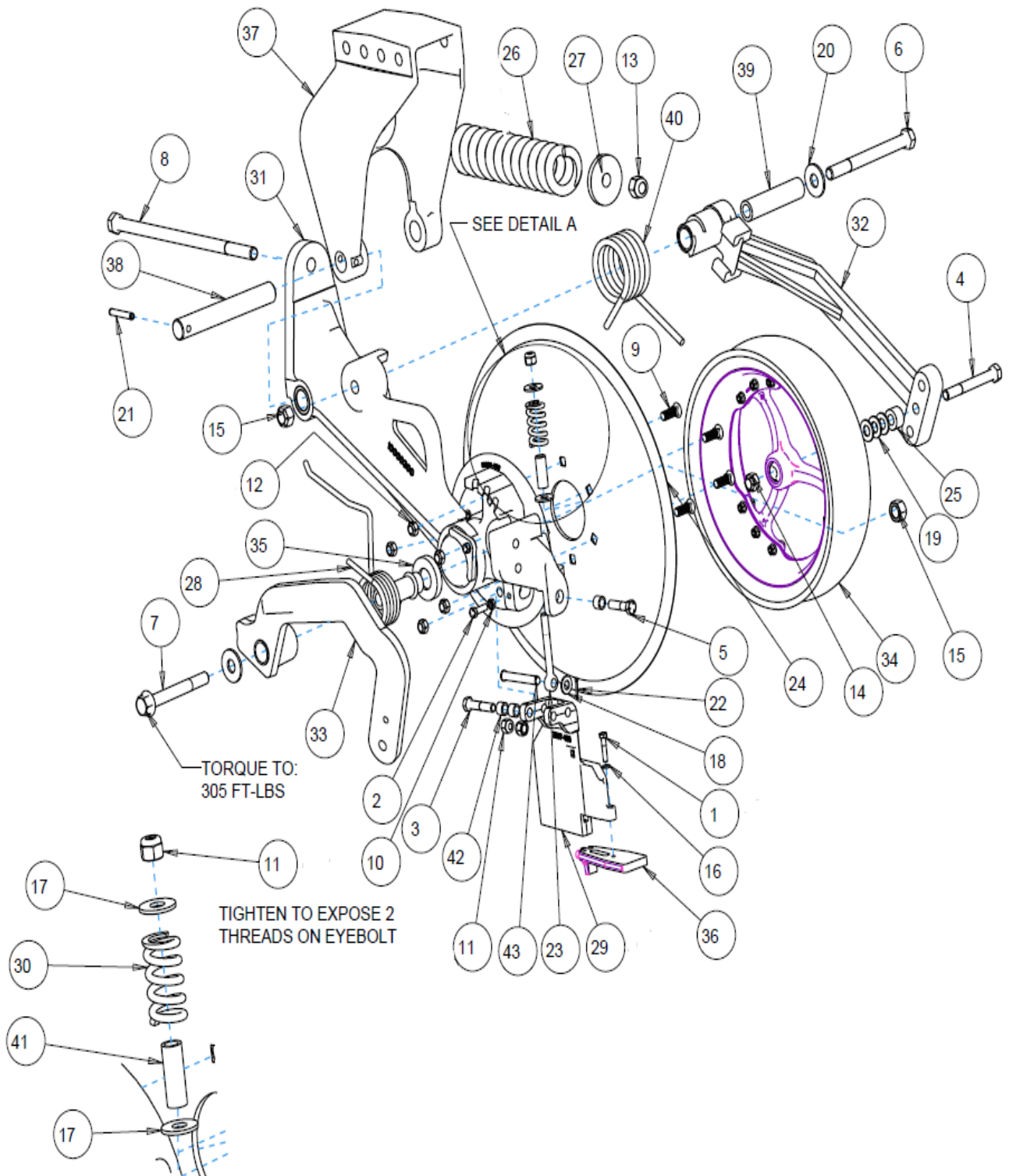
## 10000-100-RH

| ITEM | PART NO.     | DESCRIPTION                            | QTY |
|------|--------------|--|-----|
| 1    | 2502-206     | 5/16-18 X 1-1/2 HHCS GRADE 5           | 1   |
| 2    | 2502-244     | 3/8-16 X 1-1/4 HHCS GRADE 5            | 1   |
| 3    | 2502-296     | 1/2-13 X 2-1/2 HHCS GRADE 5            | 1   |
| 4    | 2502-327     | 5/8-11 X 5 HHCS GRADE 5                | 1   |
| 5    | 2502-351     | 1/2-13 X 2 HHCS GRADE 5                | 1   |
| 6    | 2502-405     | 3/4-10 X 8 HHCS GRADE 5                | 1   |
| 7    | 2502-426     | 3/4-10 X 6 HHCS GRADE 8                | 1   |
| 8    | 2502-525     | 3/4-10 X 6 HHFS GRADE 5 3" THREAD      | 1   |
| 9    | 2506-306     | 1/2-13 X 1-1/2 #3 PLOW BOLT            | 6   |
| 10   | 2520-253     | 3/8-16 JAM HEX NUT                     | 1   |
| 11   | 2520-359     | 1/2-13 NYLON LOCK HEX NUT GRADE N8     | 3   |
| 12   | 2520-362     | 1/2-13 LOCK NUT GRADE C                | 6   |
| 13   | 2520-516     | 3/4-10 NYLON LOCK HEX NUT              | 1   |
| 14   | 2520-603     | 5/8-11 TOP LOCK HEX NUT                | 1   |
| 15   | 2520-604     | 3/4-10 TOP LOCK HEX NUT                | 2   |
| 16   | 2525-201     | 5/16 LOCKWASHER                        | 1   |
| 17   | 2526-351     | 1/2 STANDARD FLAT WASHER               | 2   |
| 18   | 2526-352     | 1/2 SAE FLAT WASHER                    | 1   |
| 19   | 2526-453     | 5/8 SAE FLAT WASHER                    | 3   |
| 20   | 2526-501     | 3/4 STANDARD FLAT WASHER               | 2   |
| 21   | 2530-208     | 3/8 X 2-1/2 ROLL PIN                   | 1   |
| 22   | 2531-107     | 1/8 X 1 COTTER PIN                     | 1   |
| 23   | 2570-447     | EYEBOLT 1/2-13 X 4-1/4                 | 1   |
| 24   | 2571-279     | SMOOTH BLADE .256 X 22.60"             | 1   |
| 25   | 2967-302     | SPACER 3/4"                            | 1   |
| 26   | 2986-342     | COMPRESSION SPRING                     | 1   |
| 27   | 2986-405     | SPRING BUSHING                         | 1   |
| 28   | 2987-395-R   | RIGHT HAND TORSION SPRING              | 1   |
| 29   | 2987-406     | RIGHT HAND KNIFE                       | 1   |
| 30   | 3000-344     | 2-1/2" COMPRESSION SPRING              | 1   |
| 31   | 10000-111-RH | RIGHT HAND MAIN ARM ASSEMBLY           | 1   |
| 32   | 10000-112    | WIPER WHEEL ARM ASSEMBLY               | 1   |
| 33   | 10000-113-RH | RIGHT HAND CLOSING PIVOT ARM           | 1   |
| 34   | 10000-114    | WIPER WHEEL                            | 1   |
|      | 2570-069     | BEARING                                | 1   |
| 35   | 10000-203    | BUSHING, CLOSING ARM PIVOT             | 1   |
| 36   | 10000-250-RH | RIGHT HAND BEAVERTAIL SEALER           | 1   |
| 37   | 10000-302    | MOUNT OFFSET                           | 1   |
| 38   | 10000-307    | PIVOT PIN 1.25" X 9.125"               | 1   |
| 39   | 10000-309    | BUSHING, WIPER WHEEL PIVOT             | 1   |
| 40   | 10000-317-RH | SPRING, RIGHT HAND WIPER WHEEL TORSION | 1   |
| 41   | 10000-333    | BUSHING, SPRING LIMITER                | 1   |
| 42   | 10000-347    | BUSHING, KNIFE PIVOT                   | 3   |
| 43   | 10000-355    | PIN, 1/2 X 3.5                         | 1   |

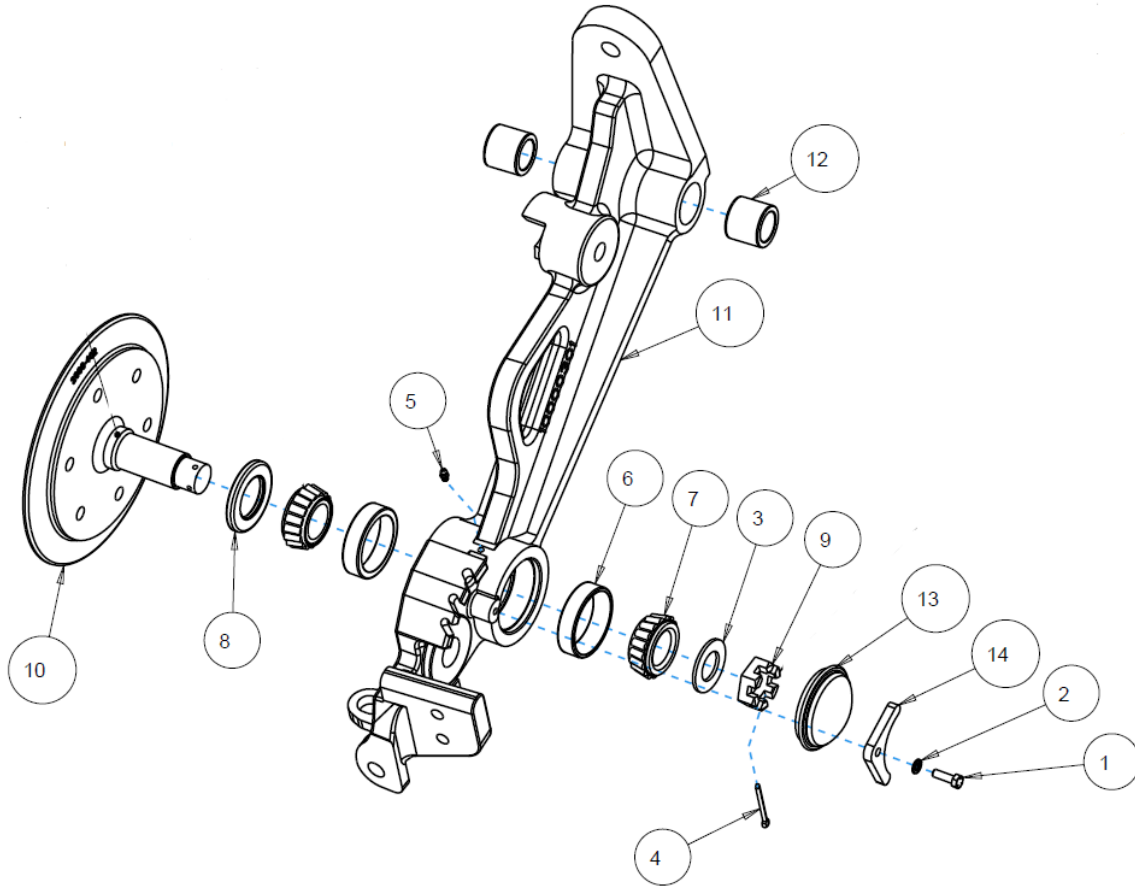
**MANUFACTURED 3/2018 – PRESENT**

# PART IDENTIFICATION

## 10000-100-RH



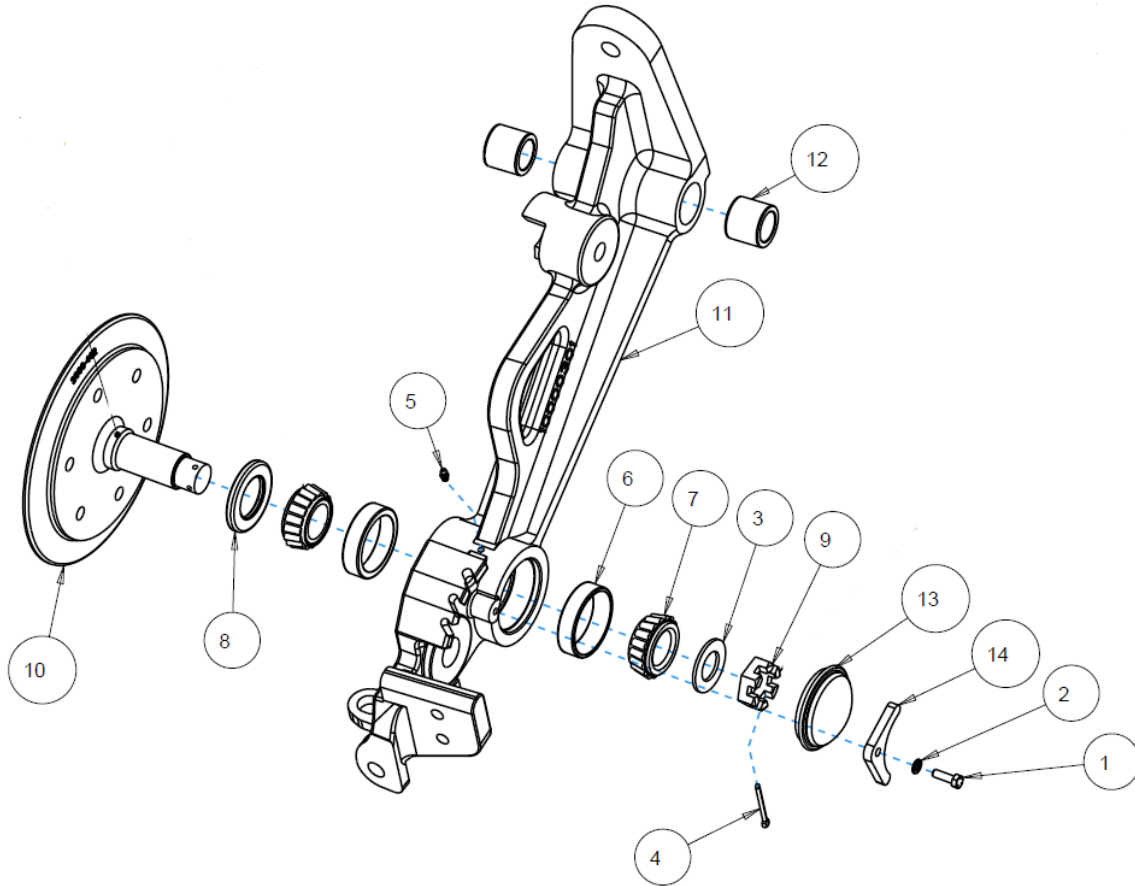
PART IDENTIFICATION  
10000-111-LH (SHOWN)  
10000-111-RH



| ITEM | PART NO.          | DESCRIPTION   | QTY |
|------|-------------------|---|-----|
| 1    | 2502-198          | 5/16-18 X 1 HHCS GRADE 5                                      | 1   |
| 2    | 2525-201          | 5/16 LOCKWASHER   | 1   |
| 3    | 2526-562          | 1-17/64 ID X 2-1/4 OD X 10 GAUGE MACHINE BUSHING              | 1   |
| 4    | 2531-124          | 3/16 X 2 COTTER PIN   | 1   |
| 5    | 2533-110          | 1/4-28 GREASE FITTING STRAIGHT SELF-TAP                       | 1   |
| 6    | 2550-056          | CUP, KOYO #2729   | 2   |
| 7    | 2550-057          | BEARING, KOYO #2788R  | 2   |
| 8    | 2550-058          | SEAL, CR #17699   | 1   |
| 9    | 2986-329          | 1-1/4-12 CASTLE HEX NUT GRADE 2                               | 1   |
| 10   | <b>*2986-402*</b> | SPINDLE (SUB: <b>10000-121 SERVICE KIT-SPINDLE AND SEAL</b> ) | 1   |
| 11   | 10000-301         | LEFT HAND MAGNUM ARM (SHOWN)                                  | 1   |
|      | 10000-300         | RIGHT HAND MAGNUM ARM   | 1   |
| 12   | 10000-313         | SLEEVE 1.75 OD X 1.25 ID X 1.50 WIDTH                         | 2   |
| 13   | 10000-314         | HUB CAP   | 1   |
| 14   | 10000-315         | HUB CAP RETAINER  | 1   |

**MANUFACTURED 06/2016 – 06-2023**

**PART IDENTIFICATION**  
**10000-111-LH (SHOWN)**  
**10000-111-RH**

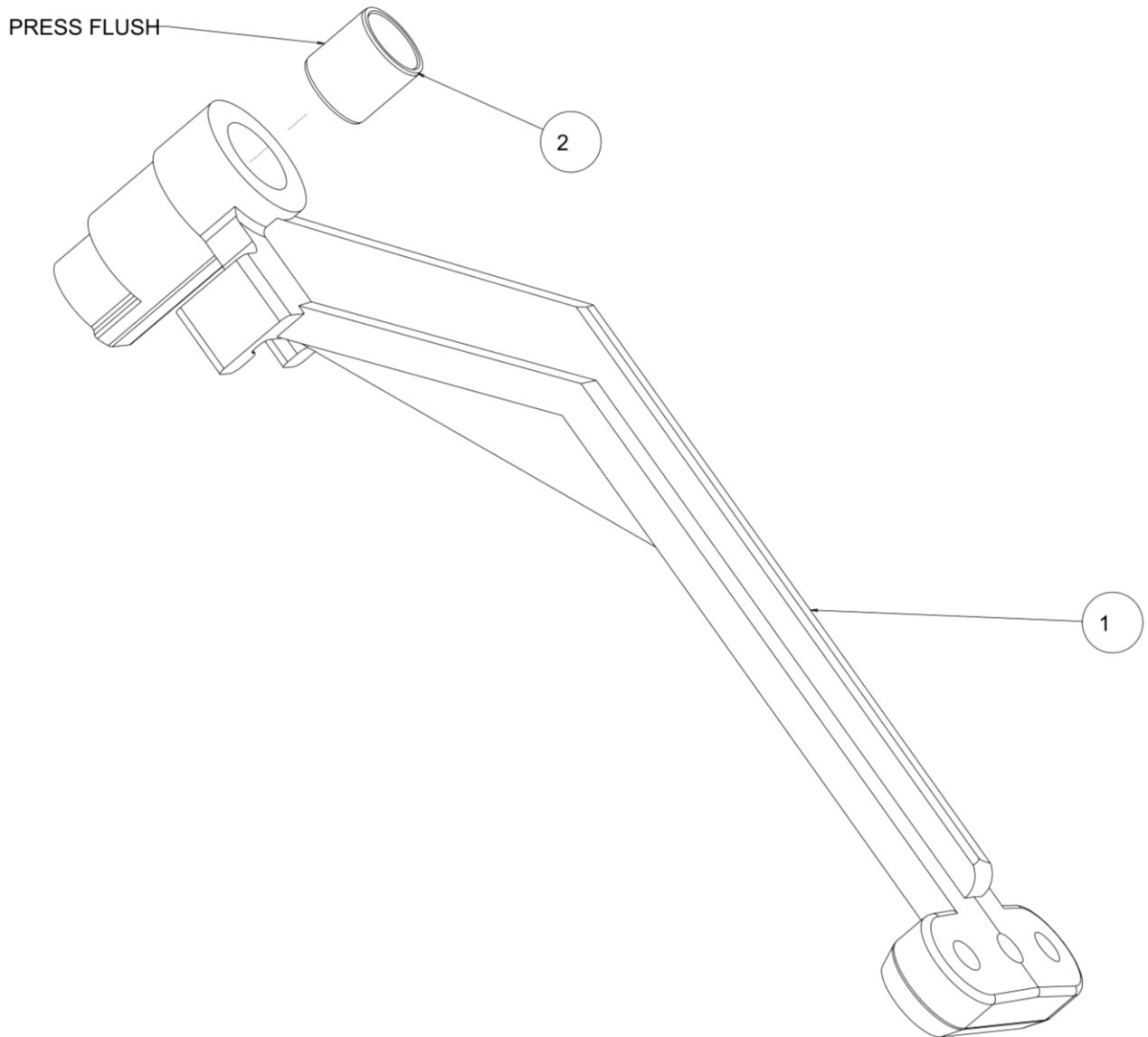


| ITEM | PART NO.  | DESCRIPTION                                      | QTY |
|------|-----------|--|-----|
| 1    | 2502-198  | 5/16-18 X 1 HHCS GRADE 5                         | 1   |
| 2    | 2525-201  | 5/16 LOCKWASHER                                  | 1   |
| 3    | 2526-562  | 1-17/64 ID X 2-1/4 OD X 10 GAUGE MACHINE BUSHING | 1   |
| 4    | 2531-124  | 3/16 X 2 COTTER PIN                              | 1   |
| 5    | 2533-110  | 1/4-28 GREASE FITTING STRAIGHT SELF-TAP          | 1   |
| 6    | 2550-056  | CUP, KOYO #2729                                  | 2   |
| 7    | 2550-057  | BEARING, KOYO #2788R                             | 2   |
| 8    | 2550-073  | SEAL, CR #21159                                  | 1   |
| 9    | 2986-329  | 1-1/4-12 CASTLE HEX NUT GRADE 2                  | 1   |
| 10   | 10000-402 | SPINDLE  | 1   |
| 11   | 10000-301 | LEFT HAND MAGNUM ARM (SHOWN)                     | 1   |
|      | 10000-300 | RIGHT HAND MAGNUM ARM                            | 1   |
| 12   | 10000-313 | SLEEVE 1.75 OD X 1.25 ID X 1.50 WIDTH            | 2   |
| 13   | 10000-314 | HUB CAP  | 1   |
| 14   | 10000-315 | HUB CAP RETAINER                                 | 1   |

**MANUFACTURED 06/2023 – PRESENT**

## PART IDENTIFICATION

### 10000-112 MAGNUM WHEEL ARM ASSEMBLY

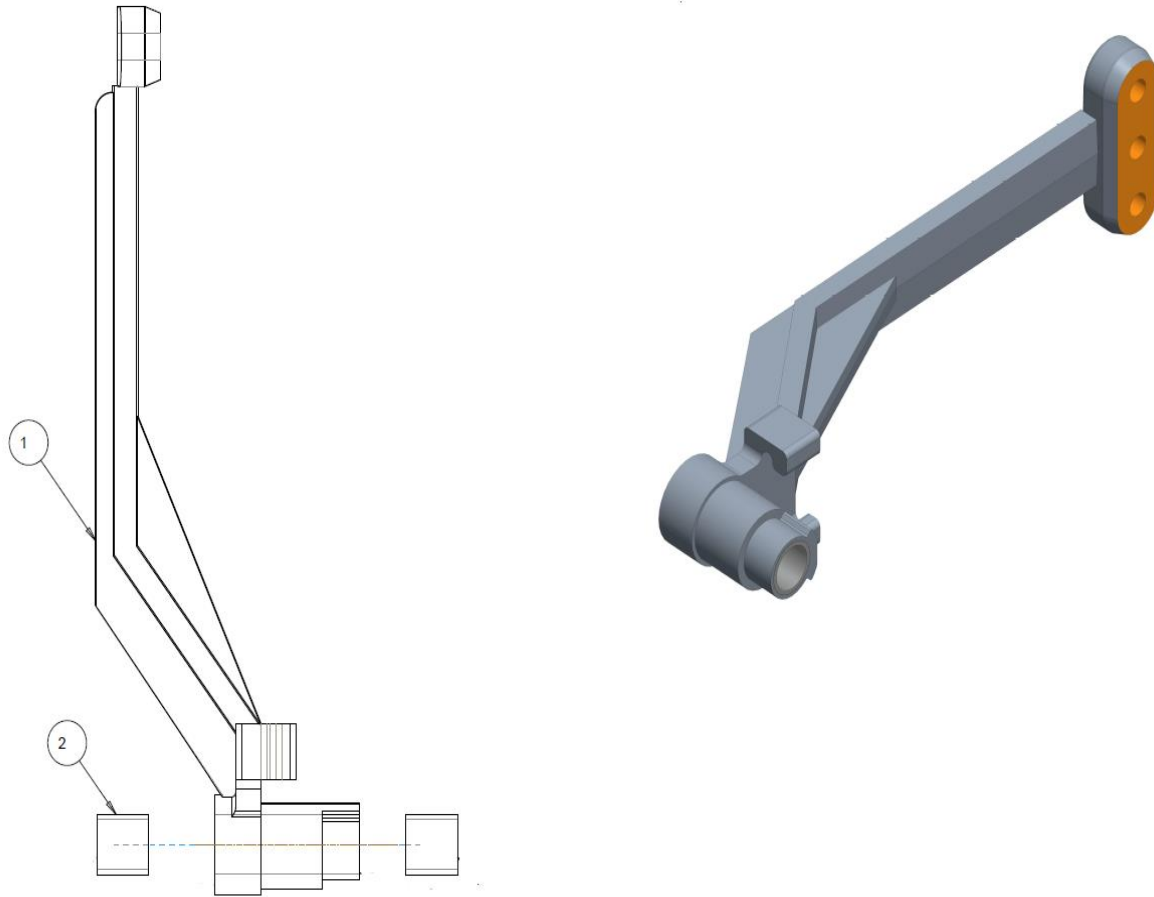


| ITEM | PART #    | DESCRIPTION                            | QTY |
|------|-----------|--|-----|
| 1    | 10000-303 | WIPER WHEEL ARM, MACHINED              | 1   |
| 2    | 10000-316 | BEARING SLEEVE 1.5 OD X 1.25 ID X 1.50 | 1   |

**MANUFACTURED 06/2016 – 06-2023**



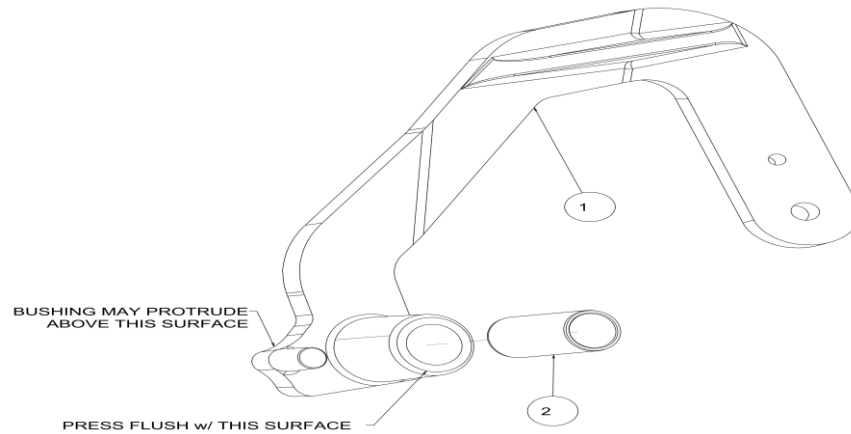
**PART IDENTIFICATION**  
**10000-112A**  
**WIPER WHEEL ARM ASSEMBLY**



| ITEM | PART NO.  | DESCRIPTION                          | QTY |
|------|-----------|--------------------------------------|-----|
| 1    | 10000-303 | WIPER WHEEL ARM                      | 1   |
| 2    | 10000-316 | SLEEVE 1.5 OD X 1.25 ID X 1.50 WIDTH | 2   |

**MANUFACTURED 06/2023 – PRESENT**

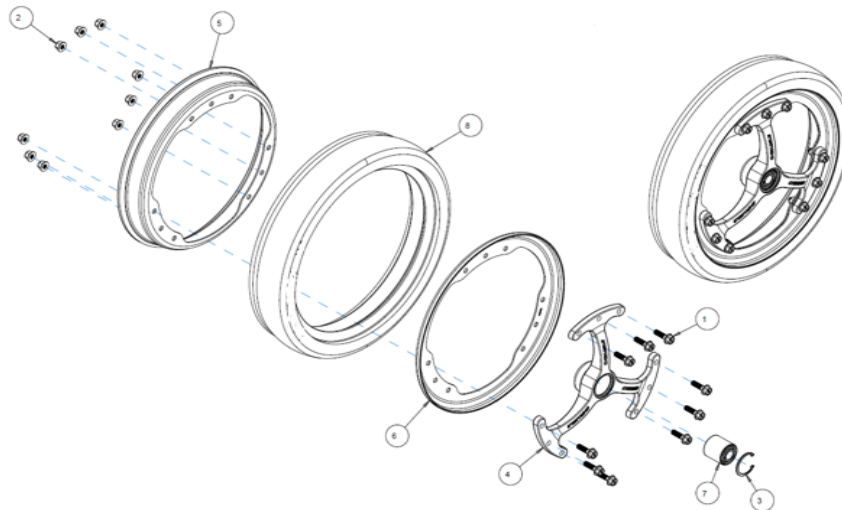
**PART IDENTIFICATION**  
**10000-113-LH(SHOWN) AND 10000-113-RH**  
**CLOSING WHEEL ARM ASSEMBLY**



| ITEM | PART NO.  | DESCRIPTION                           | QTY |
|------|-----------|---------------------------------------|-----|
| 1    | 10000-304 | LEFT HAND CLOSE WHEEL ARM (SHOWN)     | 1   |
|      | 10000-305 | RIGHT HAND CLOSE WHEEL ARM            | 1   |
| 2    | 10000-318 | SLEEVE 1.50 OD X 1.25 ID X 2.70 WIDTH | 1   |

**10000-114**

**PARTS IDENTIFICATION**

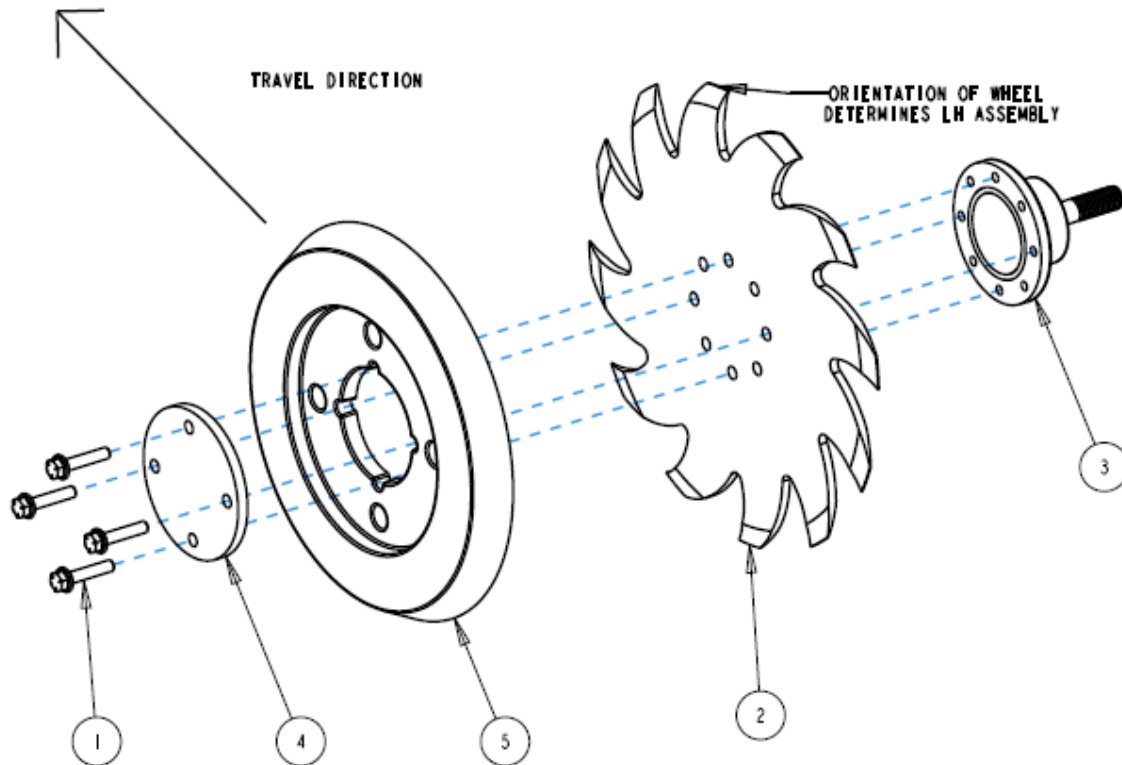


**PART LIST:**

- |   |                                 |
|---|---------------------------------|
| 1. 2502-228 M8 X 30 HEX HEAD FLANGE SCREW 8.8 | 5. 2570-148 4" X 16" WHEEL HALF |
| 2. 2520-207 M8 NYLON FLANGE LOCK NUT          | 6. 2570-149 3" X 16" WHEEL HALF |
| 3. 2550-527 SNAP RING                         | 7. 2570-069 BEARING             |
| 4. 2570-090 TRI-SPOKE HUB                     | 8. 2987-399 TIRE 4.5" X 16"     |
|   | 2570-091 TIRE 3" X 16"          |

## PART IDENTIFICATION

2987-142-L (SHOWN) & 2987-142-R  
CLOSING WHEEL ASSEMBLY

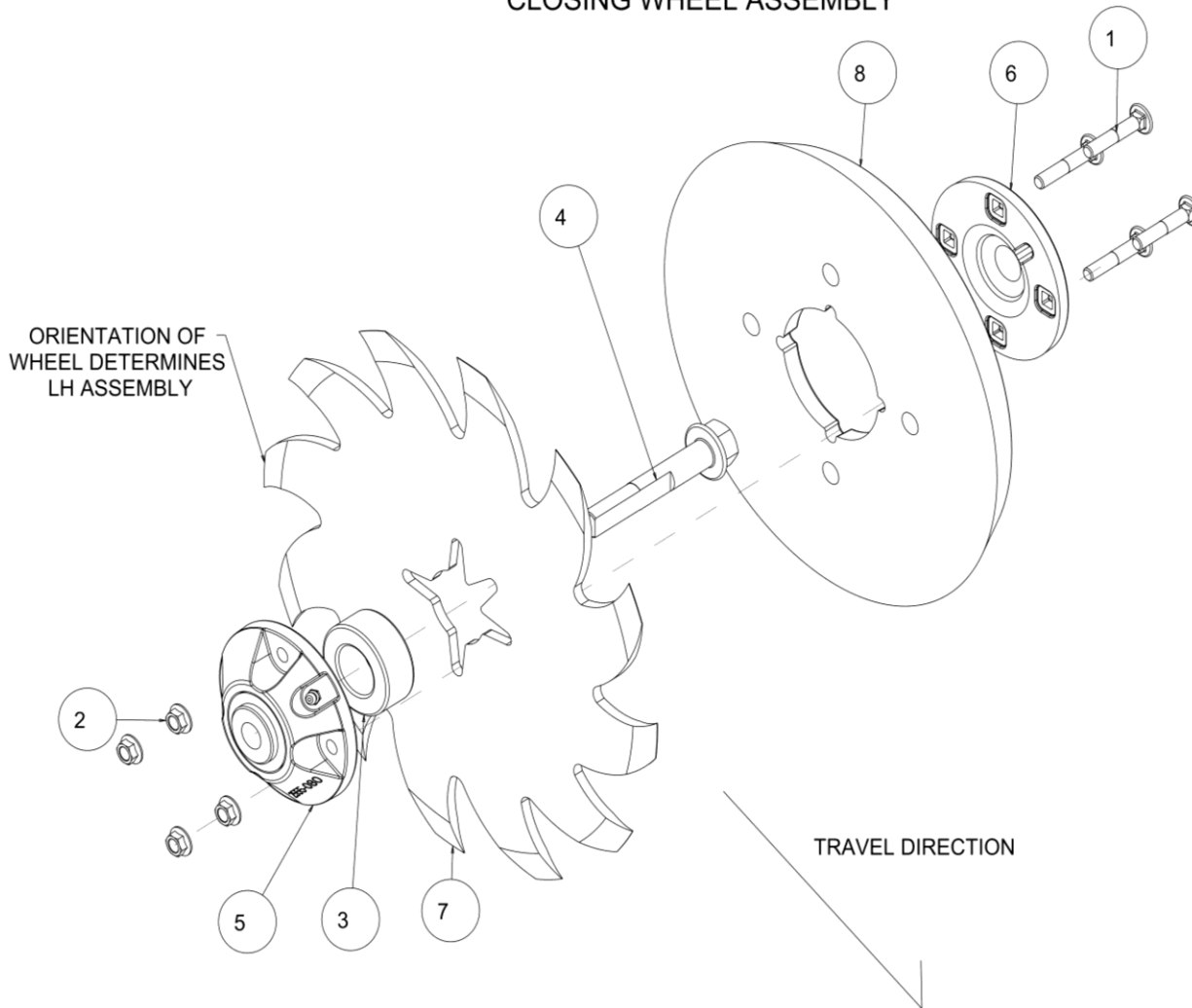


| ITEM | PART NO. | DESCRIPTION                 | QTY. |
|------|----------|-----------------------------|------|
| 1    | 2502-225 | 5/16-18 X 1-1/2 HHFS GR. 5  | 4    |
| 2    | 2571-286 | SHARKTOOTH WHEEL            | 1    |
| 3    | 2965-501 | HUB ASSEMBLY 2.406" SPINDLE | 1    |
| 4    | 2965-503 | HUB CAP                     | 1    |
| 5    | 2987-396 | CAST PRESS WHEEL            | 1    |

**MANUFACTURED 06/2021 – PRESENT**

## PART IDENTIFICATION

### 2987-142-L (SHOWN) & 2987-142-R CLOSING WHEEL ASSEMBLY



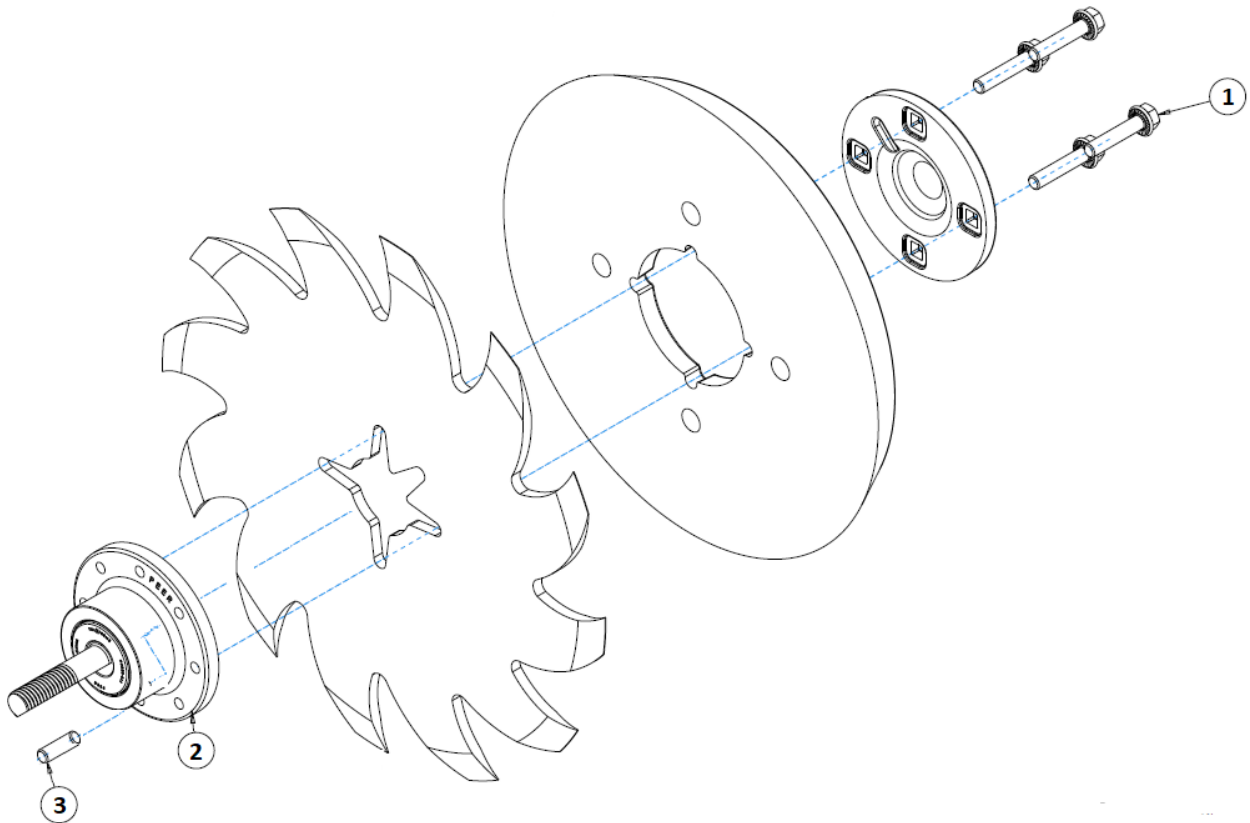
| ITEM | PART NO. | DESCRIPTION                          | QTY. |
|------|----------|--------------------------------------|------|
| 1    | 2502-209 | 5/16-18 X 1-13/4 GR. 5               | 4    |
| 2    | 2520-206 | 5/16-18 FLANGE LOCK NUT              | 4    |
| 3    | 2570-594 | BEARING                              | 1    |
| 4    | 2570-742 | D-BOLT FLANGED 5/8-11 X 3.812" GR. 8 | 1    |
| 5    | 2965-128 | HUB ASSEMBLY                         | 1    |
|      | 2550-069 | SEAL                                 | 1    |
|      | 2570-594 | BEARING                              | 1    |
|      | 2570-715 | INSERT                               | 1    |
|      | 2965-351 | HUB                                  | 1    |
| 6    | 2965-352 | HUB CAP                              | 1    |
| 7    | 2967-602 | 13" SHARK TOOTH                      | 1    |
| 8    | 2987-396 | PRESS WHEEL                          | 1    |

**MANUFACTURED 06/2016 – 06/2021**

## PARTS IDENTIFICATION

**2965-120**

### HUB UPDATE KIT

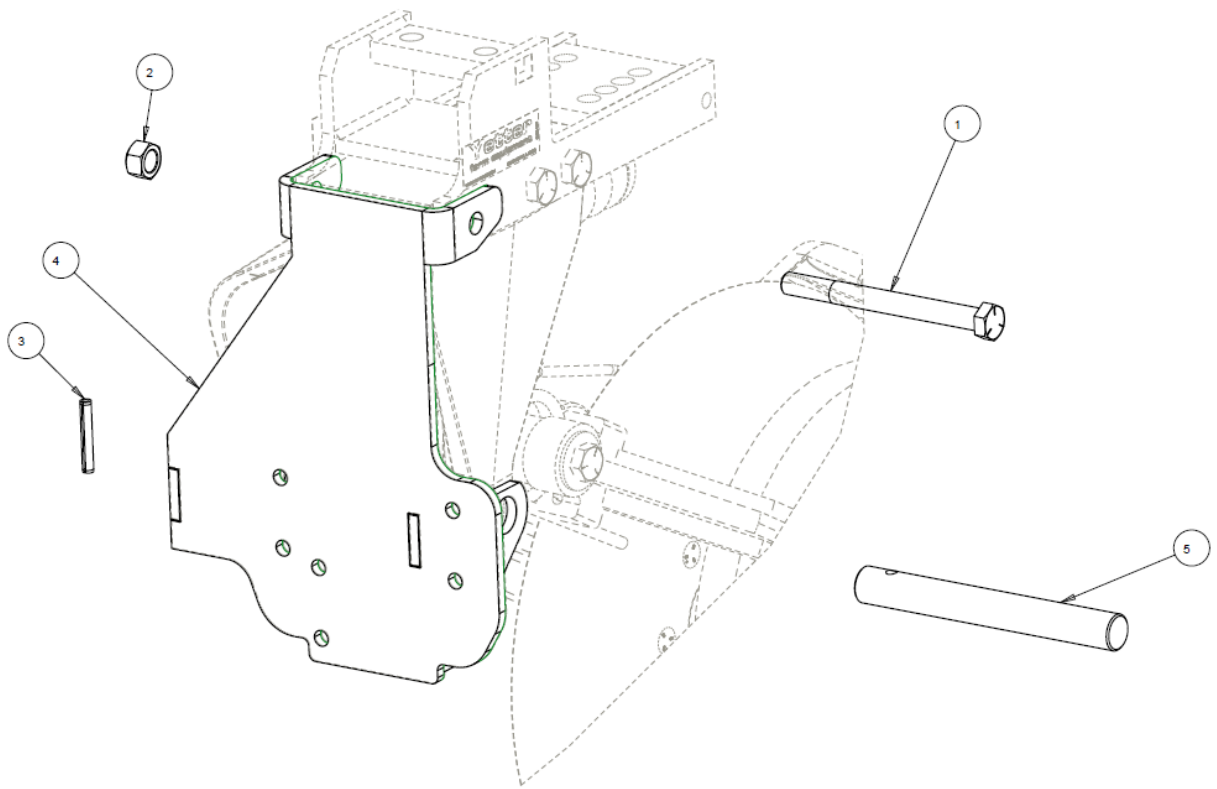


| ITEM | PART NO. | DESCRIPTION                 | QTY. |
|------|----------|-----------------------------|------|
| 1    | 2502-225 | 5/16-18 X 1-1/2 HHFS GR. 5  | 4    |
| 2    | 2965-501 | HUB ASSEMBLY 2.406" SPINDLE | 1    |
| 3    | 2940-560 | SET SCREW .313-18 X .75     | 1    |

## PARTS IDENTIFICATION

10000-080-LH

### RESIDUE MANAGER MOUNT KIT

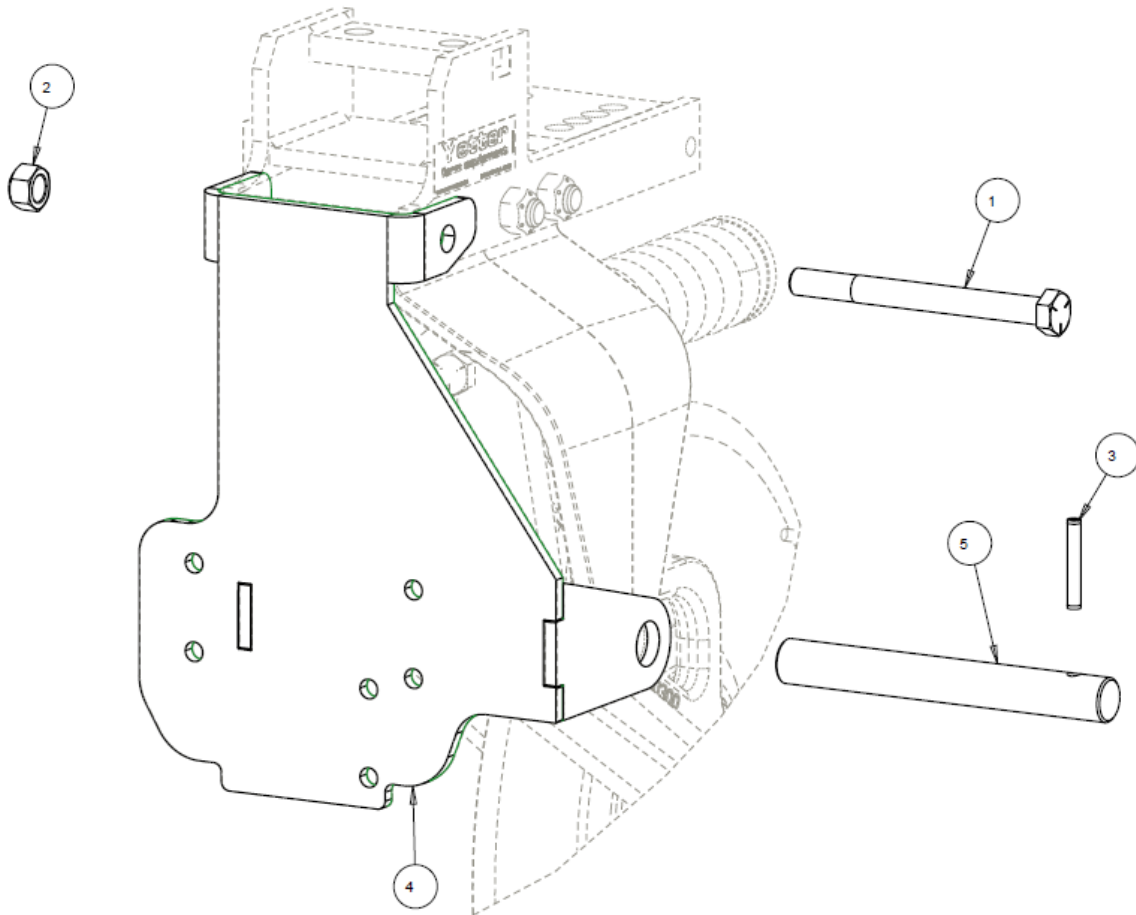


| ITEM | PART NO.     | DESCRIPTION                    | QTY |
|------|--------------|--------------------------------|-----|
| 1    | 2502-405     | 3/4-10 X 8 HHCS GR. 5 ZP       | 1   |
| 2    | 2520-604     | 3/4-10 HEX TOP LOCK, GR. C, ZP | 1   |
| 3    | 2530-208     | 3/8 X 2-1/2 ROLL PIN ZP        | 1   |
| 4    | 10000-207-LH | LH RESIDUE MANAGER MOUNT       | 1   |
| 5    | 10000-354    | MAIN PIVOT PIN, ZP             | 1   |

## PARTS IDENTIFICATION

10000-080-RH

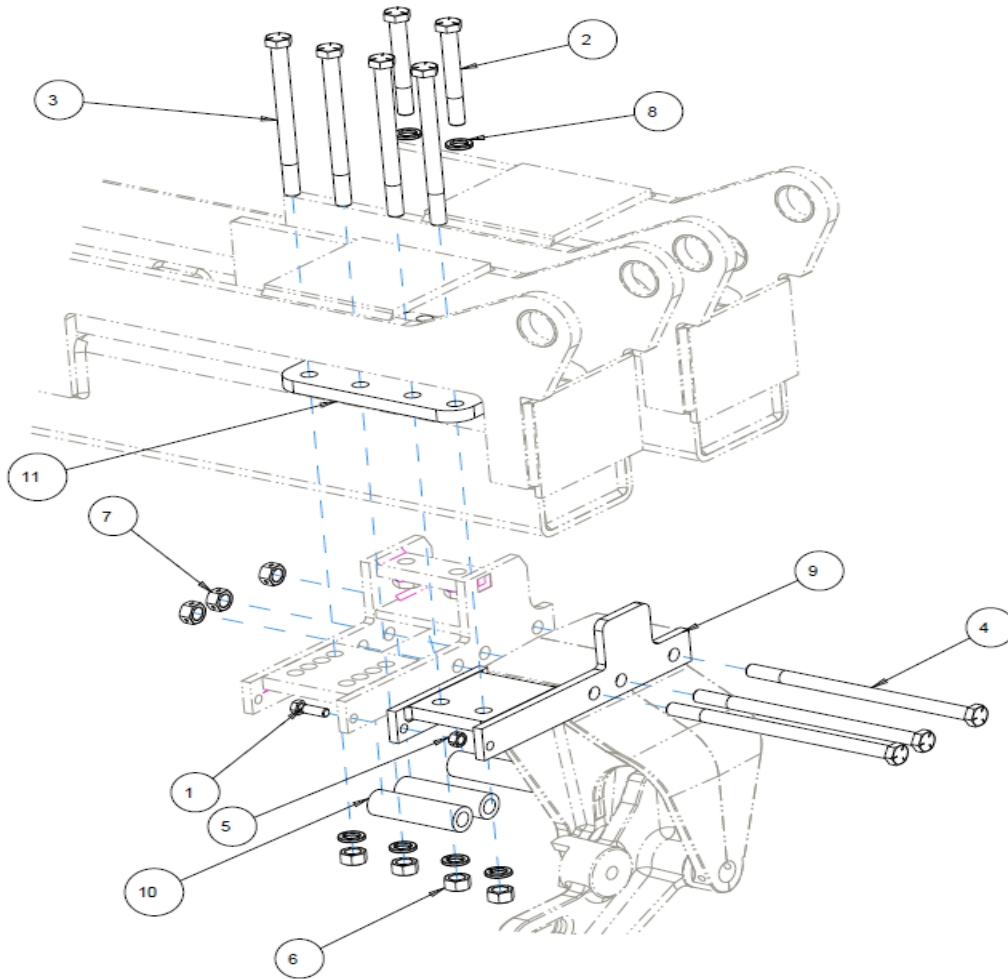
### RESIDUE MANAGER MOUNT KIT



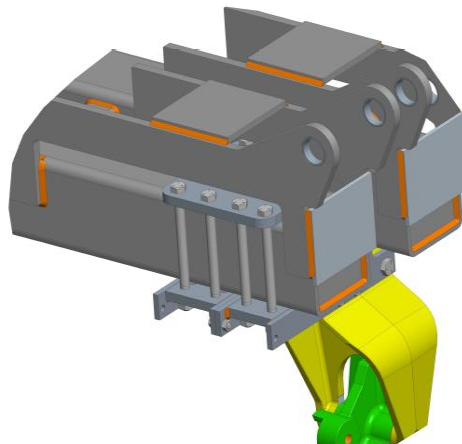
| ITEM | PART NO.     | DESCRIPTION                    | QTY |
|------|--------------|--------------------------------|-----|
| 1    | 2502-405     | 3/4-10 X 8 HHCS GR. 5 ZP       | 1   |
| 2    | 2520-604     | 3/4-10 HEX TOP LOCK, GR. C, ZP | 1   |
| 3    | 2530-208     | 3/8 X 2-1/2 ROLL PIN ZP        | 1   |
| 4    | 10000-207-RH | RH RESIDUE MANAGER MOUNT       | 1   |
| 5    | 10000-354    | MAIN PIVOT PIN, ZP             | 1   |

## PARTS IDENTIFICATION

### 10000-117 LEFT HAND MAGNUM OFFSET KIT



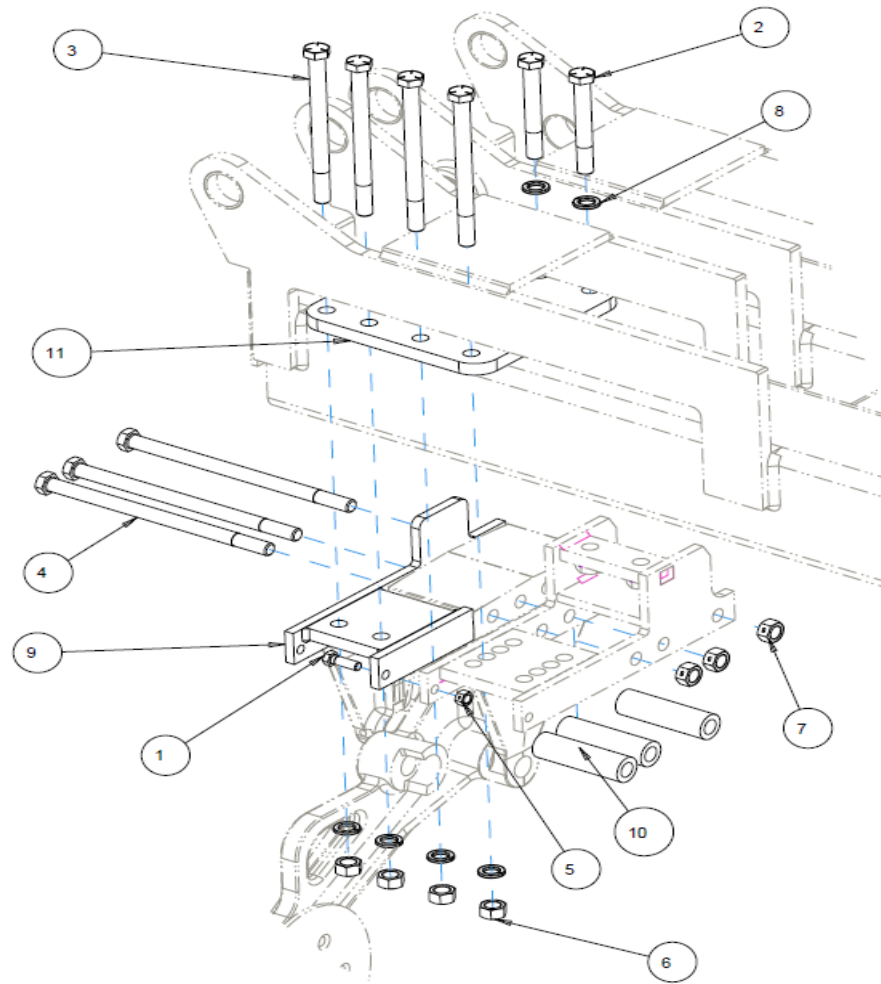
| ITEM | PART NO.  | DESCRIPTION                   | QTY |
|------|-----------|-------------------------------|-----|
| 1    | 2502-294  | 1/2-13 X 1-1/2 HHCS GR5 ZP    | 1   |
| 2    | 2502-510  | 3/4-10 X 6 HHCS GR.5 ZP       | 2   |
| 3    | 2502-516  | 3/4-10 X 9-1/2 HHCS GR5 ZP    | 4   |
| 4    | 2502-526  | 3/4-10 X 13 HHCS GR 5 ZP      | 3   |
| 5    | 2520-357  | 1/2-13 LOCK HEX NUT, GR A, ZP | 1   |
| 6    | 2520-506  | 3/4-10 HEX NUT, GR 8, ZP      | 4   |
| 7    | 2520-515  | 3/4-10 LOCK HEX NUT, GR A, ZP | 3   |
| 8    | 2525-501  | 3/4 MED. LOCKWASHER ZP.       | 6   |
| 9    | 10000-208 | OFFSET MOUNT W.A., RH         | 1   |
| 10   | 10000-356 | SUPPORT SPACER                | 3   |
| 11   | 10000-357 | OFFSET MOUNT PLATE            | 1   |



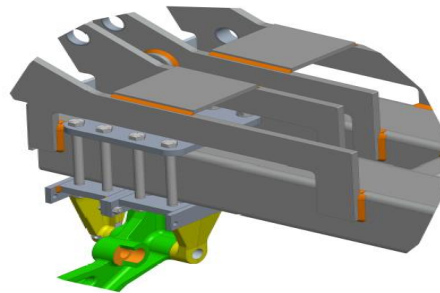


## PARTS IDENTIFICATION

### 10000-118 LEFT HAND MAGNUM OFFSET KIT

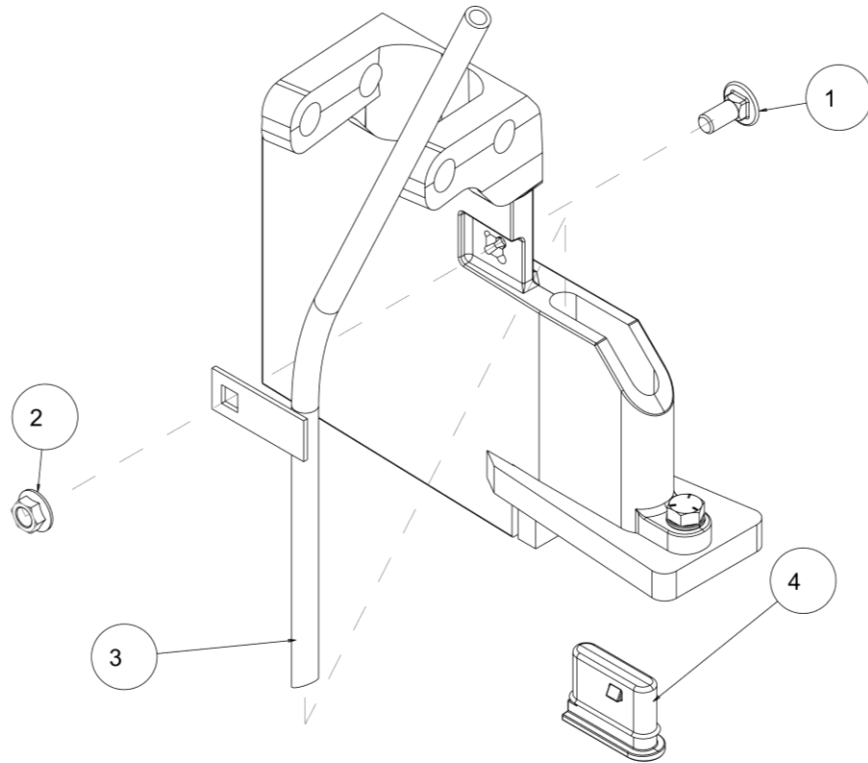


| ITEM | PART NO.  | DESCRIPTION                   | QTY |
|------|-----------|-------------------------------|-----|
| 1    | 2502-294  | 1/2-13 X 1-1/2 HHCS GR5 ZP    | 1   |
| 2    | 2502-510  | 3/4-10 X 6 HHCS GR.5 ZP       | 2   |
| 3    | 2502-516  | 3/4-10 X 9-1/2 HHCS GR5 ZP    | 4   |
| 4    | 2502-526  | 3/4-10 X 13 HHCS GR 5 ZP      | 3   |
| 5    | 2520-357  | 1/2-13 LOCK HEX NUT, GR A, ZP | 1   |
| 6    | 2520-506  | 3/4-10 HEX NUT, GR 8, ZP      | 4   |
| 7    | 2520-515  | 3/4-10 LOCK HEX NUT, GR A, ZP | 3   |
| 8    | 2525-501  | 3/4 MED. LOCKWASHER ZP.       | 6   |
| 9    | 10000-209 | OFFSET MOUNT W.A., LH         | 1   |
| 10   | 10000-356 | SUPPORT SPACER                | 3   |
| 11   | 10000-357 | OFFSET MOUNT PLATE            | 1   |



## PART IDENTIFICATION

### 2987-040-R (SHOWN) & 2987-040-L NH3 (3/8" TUBE) FERTILIZER KIT

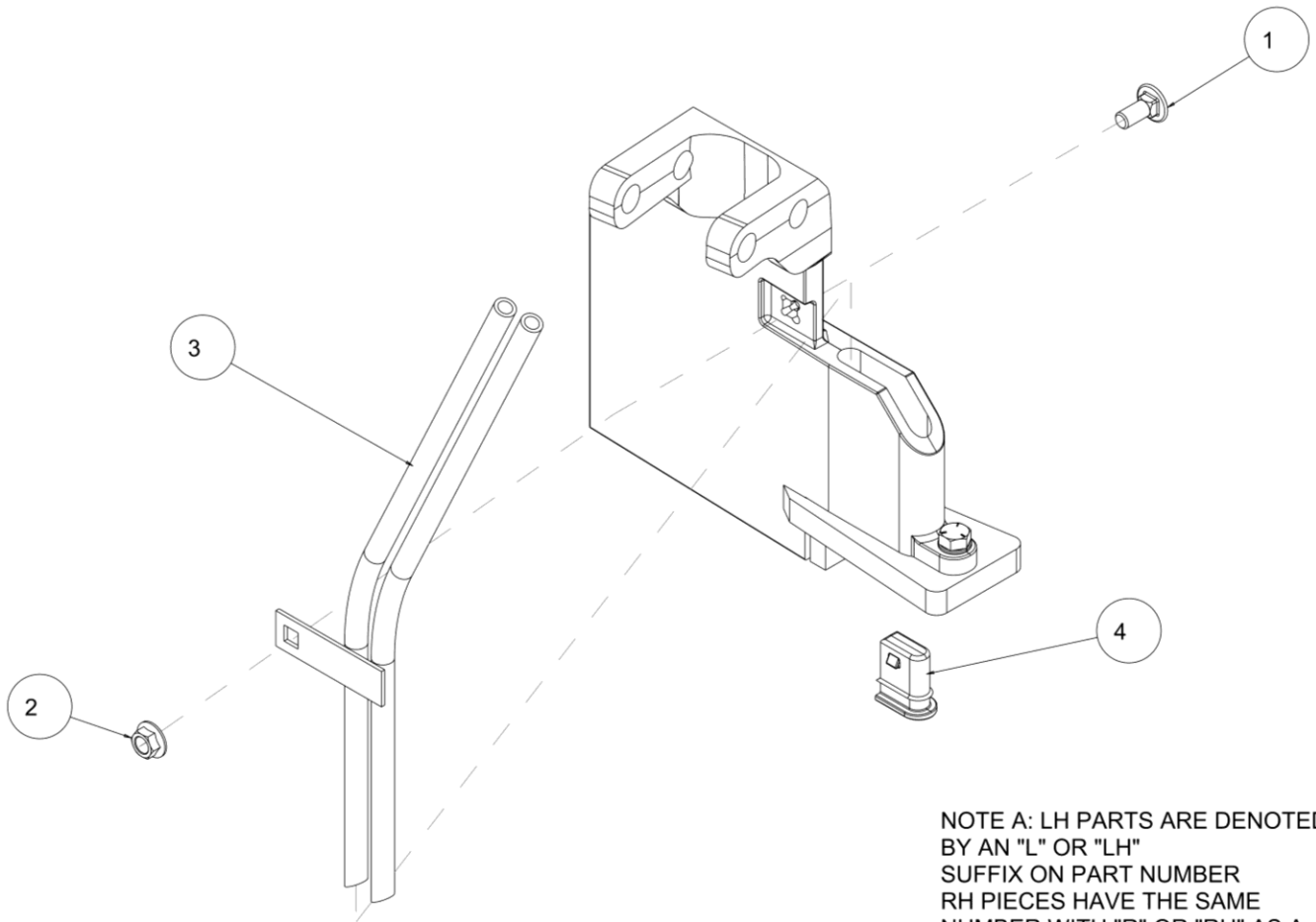


NOTE A: LH PARTS ARE DENOTED  
BY AN "L" OR "LH"  
SUFFIX ON PART NUMBER  
RH PIECES HAVE THE SAME  
NUMBER WITH "R" OR "RH" AS A  
SUFFIX

| ITEM  | PART #     | DESCRIPTION                 | QTY |
|-------|------------|-----------------------------|-----|
| 1     | 2505-205   | 5/16-18 X 3/4 CARBOLT G5 ZP | 1   |
| 2     | 2520-206   | 5/16-18 FLANGE LOCK NUT     | 1   |
| (A) 3 | 2987-248-R | RH FERT TUBE W.A. L/N       | 1   |
| 4     | 2987-412   | FULL PLUG                   | 1   |

## PART IDENTIFICATION

### 2987-041-R (SHOWN) & 2987-041-L NH3 (3/8" DUAL TUBE) FERTILIZER KIT

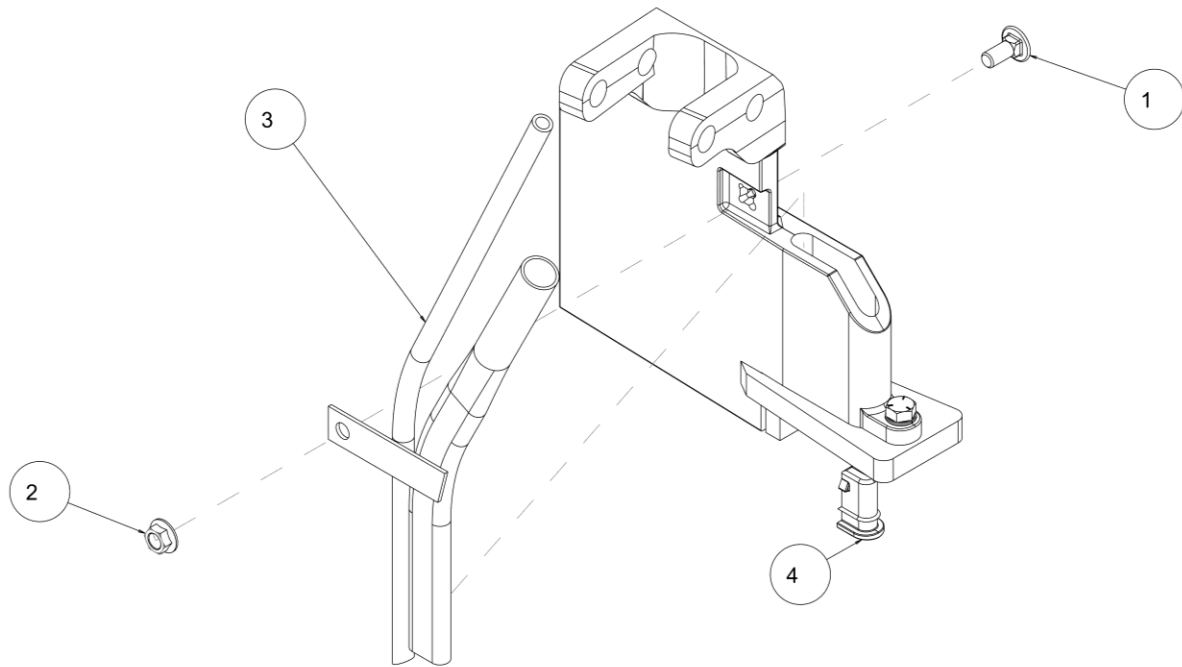


NOTE A: LH PARTS ARE DENOTED  
BY AN "L" OR "LH"  
SUFFIX ON PART NUMBER  
RH PIECES HAVE THE SAME  
NUMBER WITH "R" OR "RH" AS A  
SUFFIX

| ITEM  | PART #     | DESCRIPTION                 | QTY |
|-------|------------|-----------------------------|-----|
| 1     | 2505-205   | 5/16-18 X 3/4 CARBOLT G5 ZP | 1   |
| 2     | 2520-206   | 5/16-18 FLANGE LOCK NUT     | 1   |
| (A) 3 | 2987-247-R | RH FERT TUBE W.A. NH3 W/LIQ | 1   |
| 4     | 2987-414   | 3/4 PLUG                    | 1   |

## PART IDENTIFICATION

2987-042-R (SHOWN) & 2987-042-L  
NH3 w/ VAPOR (3/8" & 3/4" TUBE) KIT

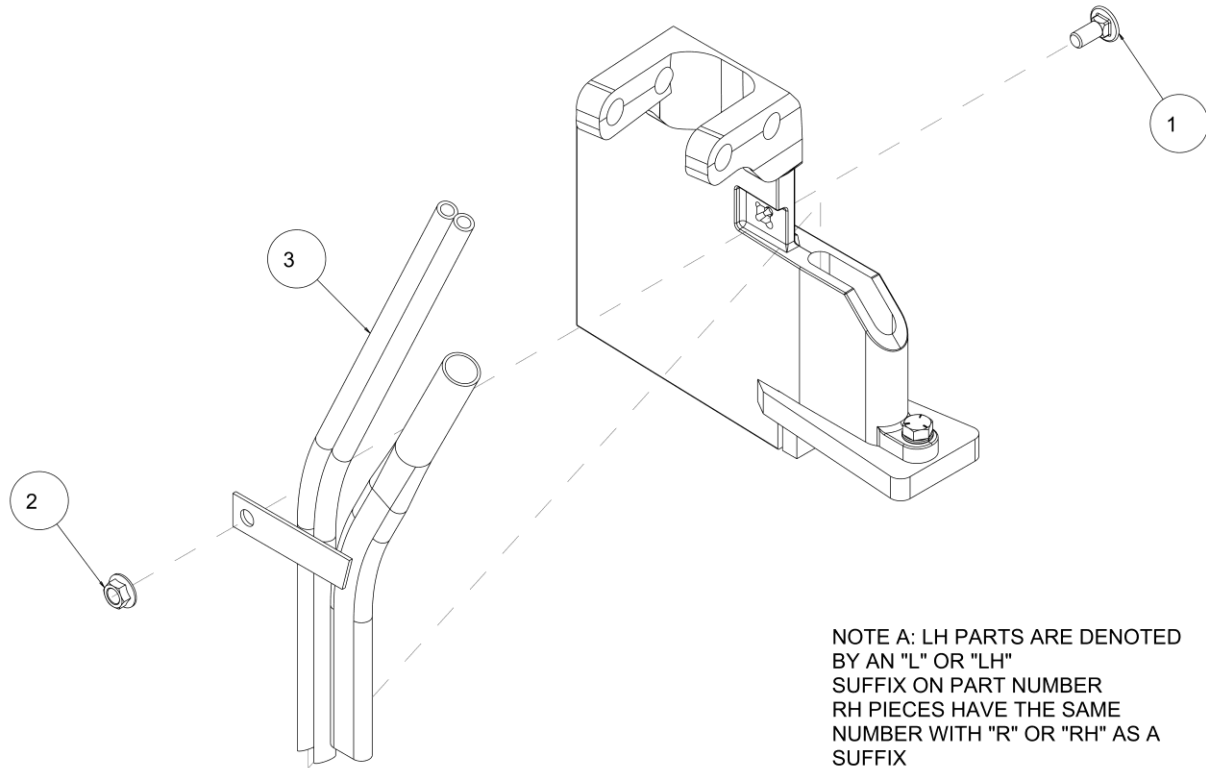


NOTE A: LH PARTS ARE DENOTED  
BY AN "L" OR "LH"  
SUFFIX ON PART NUMBER  
RH PIECES HAVE THE SAME  
NUMBER WITH "R" OR "RH" AS A  
SUFFIX

| ITEM  | PART #     | DESCRIPTION                 | QTY |
|-------|------------|-----------------------------|-----|
| 1     | 2505-205   | 5/16-18 X 3/4 CARBOLT G5 ZP | 1   |
| 2     | 2520-206   | 5/16-18 FLANGE LOCK NUT     | 1   |
| (A) 3 | 2987-246-R | RH FERT TUBE W.A. NH3 W/V   | 1   |
| 4     | 2987-413   | 1/2 PLUG                    | 1   |

## PART IDENTIFICATION

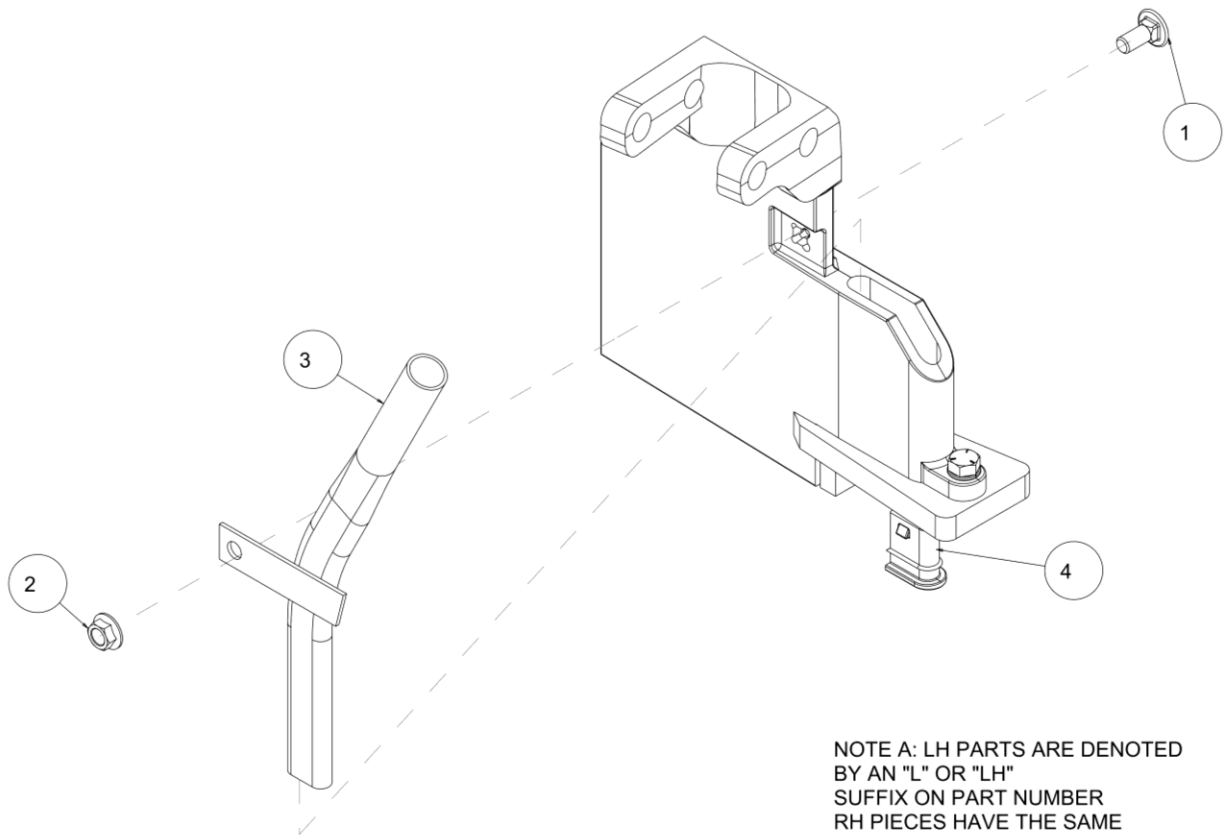
2987-043-R (SHOWN) & 2987-043-L  
NH3 w/ VAPOR (3/8" DUAL & 3/4" SINGLE TUBE) KIT



| ITEM  | PART #     | DESCRIPTION                       | QTY |
|-------|------------|-----------------------------------|-----|
| 1     | 2505-205   | 5/16-18 X 3/4 CARBOLT G5 ZP       | 1   |
| 2     | 2520-206   | 5/16-18 FLANGE LOCK NUT           | 1   |
| (A) 3 | 2987-249-R | RH FERT TUBE W.A. NH3, LIQ, VAPOR | 1   |

PART IDENTIFICATION

2987-044-R (SHOWN) & 2987-044-L  
NH3 VAPOR ONLY (3/4" TUBE) KIT

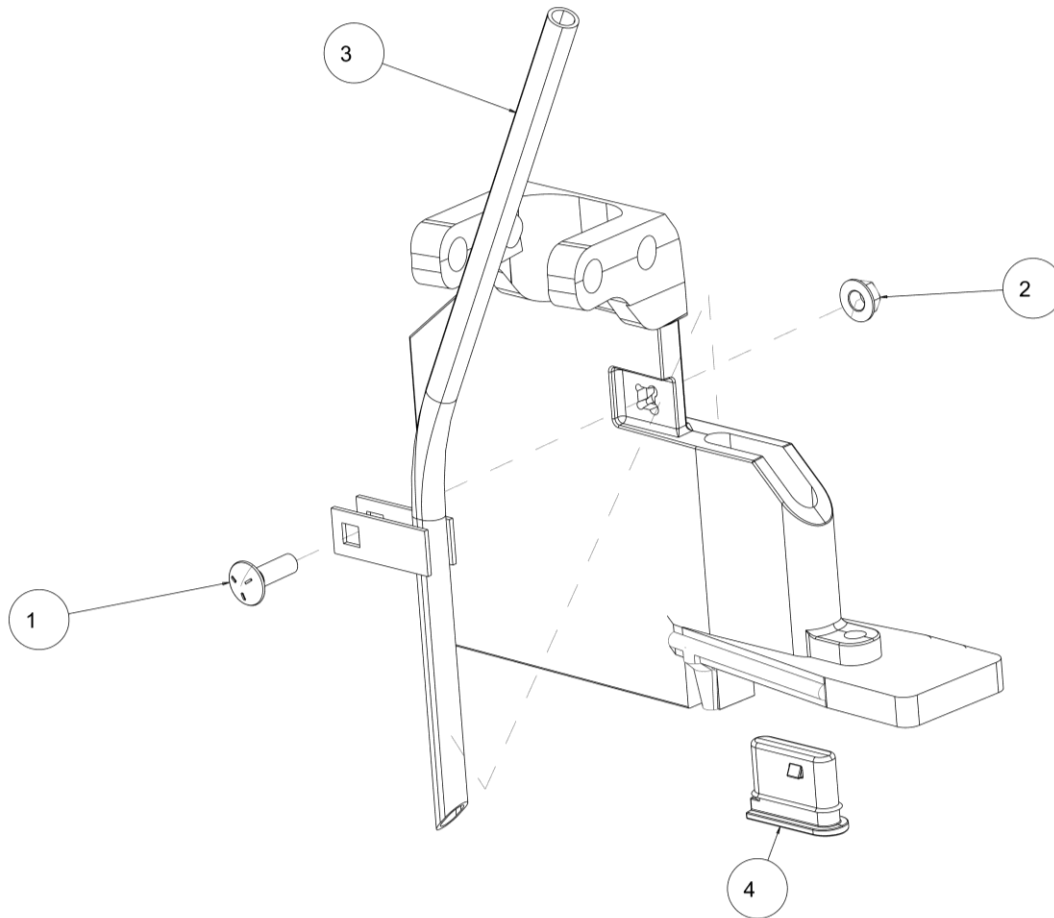


NOTE A: LH PARTS ARE DENOTED  
BY AN "L" OR "LH"  
SUFFIX ON PART NUMBER  
RH PIECES HAVE THE SAME  
NUMBER WITH "R" OR "RH" AS A  
SUFFIX

| ITEM | PART #     | DESCRIPTION                  | QTY |
|------|------------|------------------------------|-----|
| 1    | 2505-205   | 5/16-18 X 3/4CARBOLT G5 ZP   | 1   |
| 2    | 2520-206   | 5/16-18 FLANGE LOCK NUT      | 1   |
| A 3  | 2987-251-R | RH FERT TUBE W.A. VAPOR ONLY | 1   |
| 4    | 2987-414   | 3/4 PLUG                     | 1   |

## PART IDENTIFICATION

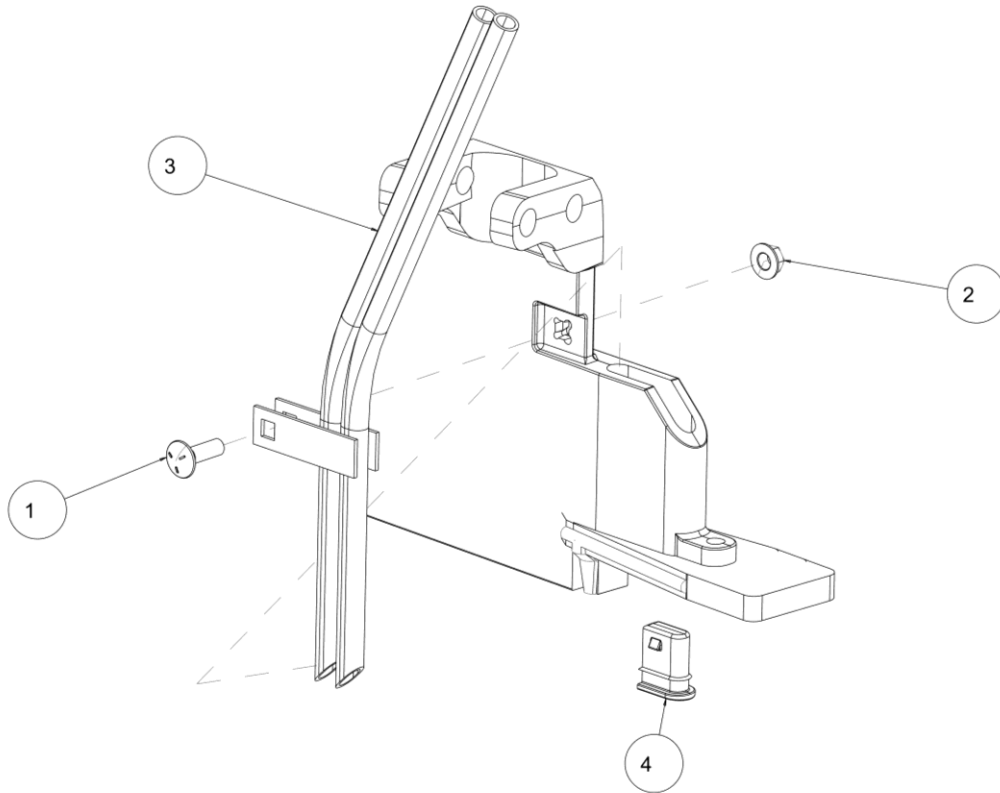
### 2987-046 LIQUID (1/2" SINGLE TUBE) KIT



| ITEM | PART #   | DESCRIPTION               | QTY |
|------|----------|---------------------------|-----|
| 1    | 2505-206 | 5/16-18 X 1 CARBLT GR5 ZP | 1   |
| 2    | 2520-206 | 5/16-18 FLANGE LOCK NUT   | 1   |
| 3    | 2987-252 | 1/2" LIQ TUBE W.A.        | 1   |
| 4    | 2987-412 | FULL PLUG                 | 1   |

## PART IDENTIFICATION

### 2987-047 LIQUID (1/2" DUAL TUBE) KIT

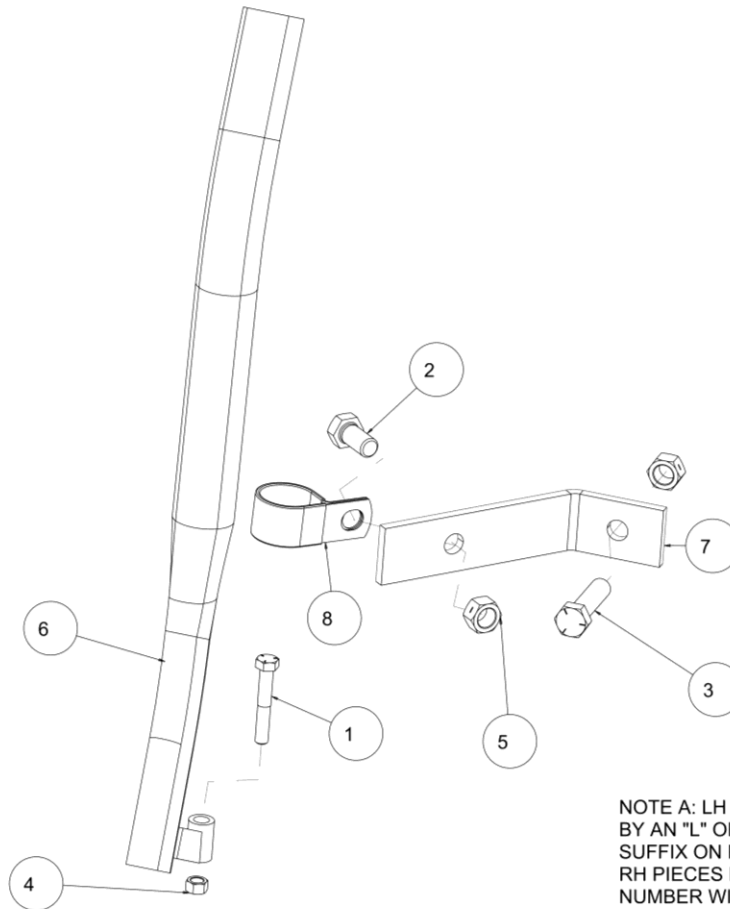


| ITEM | PART #   | DESCRIPTION               | QTY |
|------|----------|---------------------------|-----|
| 1    | 2505-206 | 5/16-18 X 1 CARBLT GR5 ZP | 1   |
| 2    | 2520-206 | 5/16-18 FLANGE LOCK NUT   | 1   |
| 3    | 2987-253 | 1/2" DUAL LIQ TUBE W.A.   | 1   |
| 4    | 2987-414 | 3/4 PLUG                  | 1   |



## PART IDENTIFICATION

### 10000-050-LH (SHOWN) & 10000-050-RH MAGNUM GRANULAR FERTILIZER TUBE KIT

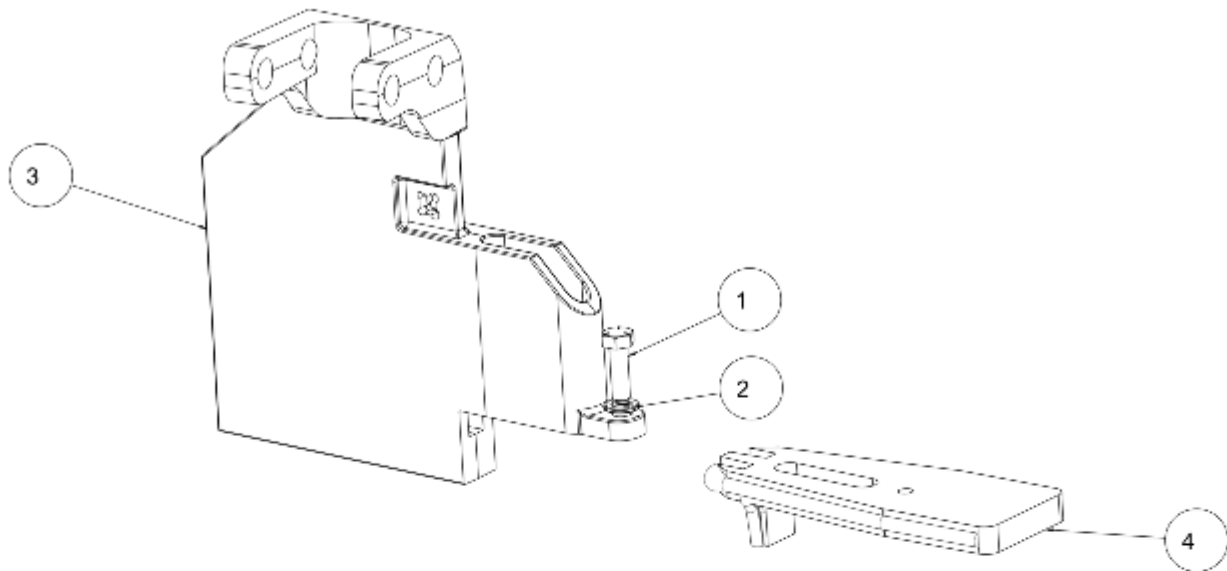


NOTE A: LH PARTS ARE DENOTED  
BY AN "L" OR "LH"  
SUFFIX ON PART NUMBER  
RH PIECES HAVE THE SAME  
NUMBER WITH "R" OR "RH" AS A  
SUFFIX

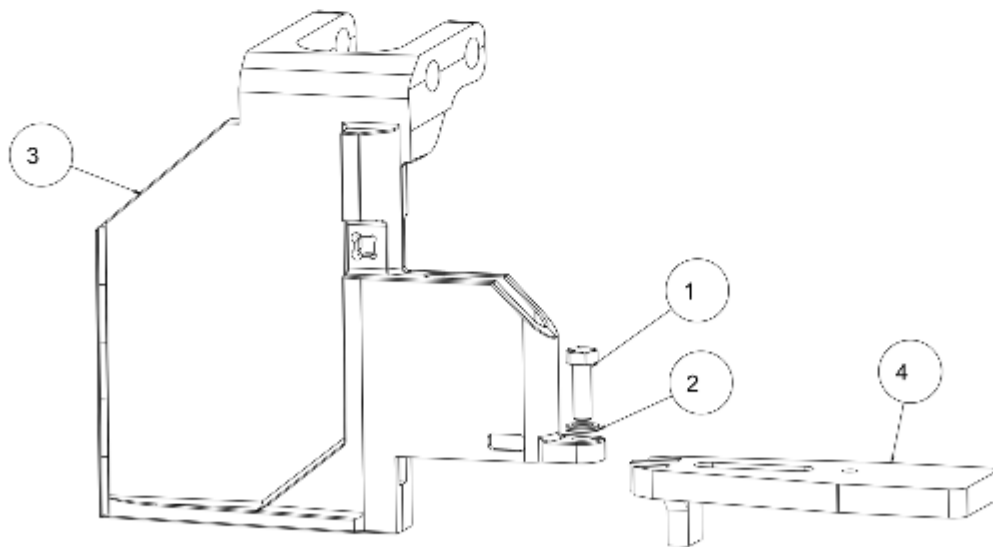
| ITEM  | PART #       |  | DESCRIPTION | QTY |
|-------|--------------|--|-------------|-----|
| 1     | 2502-207     | 5/16-18 X 2 HHCS GR5 ZP                |             | 1   |
| 2     | 2502-292     | 1/2-13 X 1 HHCS GR5 YD                 |             | 1   |
| 3     | 2502-351     | 1/2-13 X 2 HHCS GR.5 ZP                |             | 1   |
| 4     | 2520-201     | 5/16-18 HEX NUT ZP                     |             | 1   |
| 5     | 2520-358     | 1/2-13 LOCK HEX NUT, GR8, ZP           |             | 2   |
| (A) 6 | 10000-206-LH | MAGNUM LH DRY FERT TUBE, W.A.          |             | 1   |
| 7     | 10000-345    | DRY TUBE SUPPORT                       |             | 1   |
| 8     | 10000-346    | LOOP CLAMP - VINYL CUSHIONED 1.5" I.D. |             | 1   |

## PART IDENTIFICATION

### 2987-406 RH (TOP) & 2987-407 LH (BOTTOM) MAGNUM KNIFE ATTACHMENT



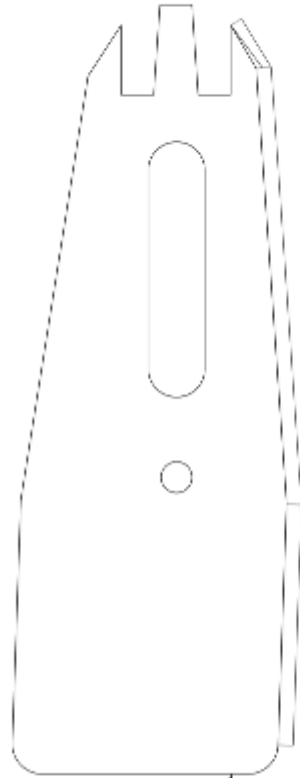
| ITEM | PART #       | DESCRIPTION              | QTY |
|------|--------------|--------------------------|-----|
| 1    | 2502-198     | 5/16-18 X 1 HHCS GR.5 ZP | 1   |
| 2    | 2525-201     | 5/16 MED. LOCKWASHER ZP. | 1   |
| 3    | 2987-406-C   | SIDE KNIFE w/ CARBIDE RH | 1   |
| 4    | 10000-250-RH | BEAVERTAIL RH W.A., 2IN  | 1   |



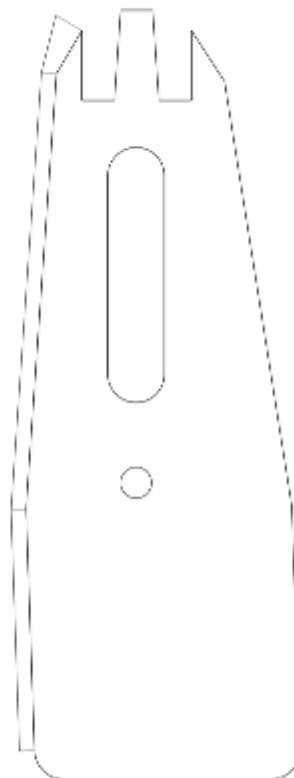
| ITEM | PART #       | DESCRIPTION              | QTY |
|------|--------------|--------------------------|-----|
| 1    | 2502-198     | 5/16-18 X 1 HHCS GR.5 ZP | 1   |
| 2    | 2525-201     | 5/16 MED. LOCKWASHER ZP. | 1   |
| 3    | 2987-407-C   | SIDE KNIFE w/ CARBIDE LH | 1   |
| 4    | 10000-250-LH | BEAVERTAIL LH W.A., 2IN  | 1   |

## PART IDENTIFICATION

10000-250-LH & 10000-250-RH  
MAGNUM BEAVERTAIL



10000-250-LH  
LEFT-HAND BEAVERTAIL



10000-250-RH  
RIGHT-HAND BEAVERTAIL



A Tradition of Solutions since 1930

Yetter Farm Equipment Co

PO BOX 358 109 S. McDonough

Colchester, IL 62326-0358

Phone: 309-776-4111

Toll Free: 800-447-5777

Email: [info@yetterco.com](mailto:info@yetterco.com)

For updated models and manuals visit the Yetter website:

[www.yetterco.com](http://www.yetterco.com)

© Yetter Farm Equipment Co. All Rights Reserved

2565-957\_Rev\_K 04/2023