

6200 TWISTER CLOSING WHEEL



Each planting season, farmers face a critical challenge: how to successfully close the seed trench.

Yetter 6200 Twister Closing Wheels have a twisted-spike design that breaks up sidewall compaction and is effective in a wide range of soil conditions. Whatever your tillage practice or soil type, Twister Closing Wheels seal the seed trench, ensuring seed-to-soil contact for optimal seed germination and uniform emergence.

TWISTER®



GET TO KNOW THE 6200 TWISTER POLY CLOSING WHEEL



DATA & ROI

Since its introduction, the Twister Closing Wheel has received positive feedback. In Beck's Practical Farm Research studies, the Twister increased yields by an **average of 6.4 bushels per acre.***

Beck's PFR provides unbiased, farmer-focused research through studies conducted across the Midwest. A Beck's PFR Proven product or practice provides a positive yield increase during three or more years of testing. Products must average a positive return on investment during that time. The studies compared the Twister Closing Wheel with other closing wheels on the market.

**Please remember yield results vary based on many factors each year. Always consider your unique operation when deciding what equipment to invest in. Data found here is only a starting point.*



DON'T LEAVE SEED TRENCH CLOSURE UP TO CHANCE

You prepare all year for the moment the seed goes in the ground.

If you're rolling the dice with factory rubber closing wheels, or leaving it up to the weather Mother Nature sends your way, you're missing an opportunity to maximize yield.

Poor seed-to-soil contact is a major cause of uneven emergence, a problem that can result in yield loss. Factory rubber closing wheels are designed to firm up loose soil—but they do nothing to fracture sidewall compaction or ensure seeds are fully surrounded by soil.

To close the seed trench and set your crop up for even emergence, equip your planter with Yetter Twister Closing Wheels. The Twister is a cost-effective, high-performing replacement closing wheel that provides ROI. The most effective setup is to run your Twisters in pairs on each row (left and right).

As a general starting point, we recommend spacing your Twister Closing Wheels at 1-1/4". Then evaluate your field conditions, soil type, and tillage practices—you may want to adjust the spacing to ensure you are properly breaking through the sidewall and creating optimal seed-to-soil contact.



Scan the QR code to watch the video on YouTube.

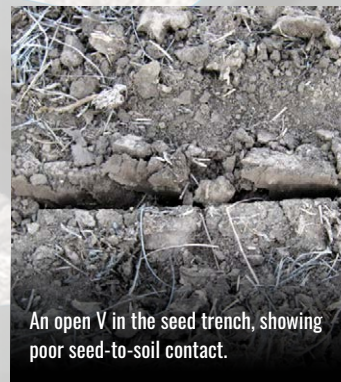


DO I NEED A BETTER CLOSING WHEEL?

Here's how to check whether you need a better closing wheel:

1. Inspect behind the planter when tillage practices and soil conditions change. An open V shape in the seed trench means you do NOT have seed-to-soil contact—resulting in yield loss.
2. Insert a 4" putty knife directly into a planted row, perpendicular to the direction of travel.
3. Using another 1" putty knife or similar scraper, scrape the soil out of the seed zone to reveal an opening approximately 6" long and equal to the width and depth of the inserted 4" putty knife.
4. Remove the 4" putty knife to reveal a cross section of the planted row.
5. To understand what changes are needed to improve your closing wheel system, inspect the seed trench for excessive sidewall compaction, air pockets, and poor seed-to-soil contact.

With the Twister Closing Wheel, the seed trench is closed, giving you assurance that the investment you made in seed, chemical, fertilizer, and equipment will produce the yields you have planned for.



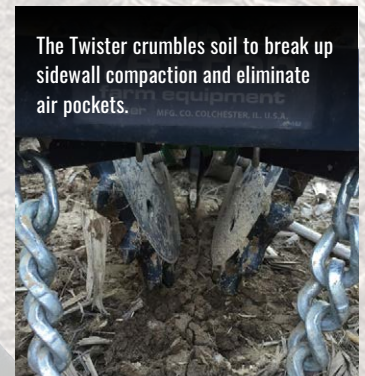
An open V in the seed trench, showing poor seed-to-soil contact.



Soil crumbled around the seed, creating ideal growing conditions.



With help from the 6200 Drag Chain, the Twister Poly Closing Wheel creates a consistently closed seed trench.



The Twister crumbles soil to break up sidewall compaction and eliminate air pockets.

THE TWISTER DIFFERENCE: HOW IT WORKS

Crumbles and firms soil simultaneously: Twisted spikes enhance seed-to-soil contact and help create the ideal seed environment, leading to even crop emergence and higher yields. The rounded center ring—sized 12" to match the size of rubber closing wheels—maintains consistent depth.

Works in diverse field conditions, cover crops, and tillage practices: Optimize performance for minimum-till, conventional, strip-till, vertical tillage, or no-till by adjusting down pressure on the tail wheel closing arm.

Fractures the sidewall: In wet, unfavorable planting conditions, the Twister fractures the sidewall. This reduces the potential for crusting and the seed trench drying out and cracking open.

Prevents mud buildup: A smooth surface and a rounded center design help prevent problematic mud buildup, which can interfere with seed trench closure.

Cost-effective and easy to install: The Twister Poly Closing Wheel is built for durability with ultra-high molecular weight (UHMW) plastic. It takes as little as five minutes per row unit to install. Independent studies by Beck's Practical Farm Research have shown the Twister provides a positive return on investment.



The Twister's spikes crumble and firm soil at the same time.



The Twister's rounded center ring maintains consistent depth.



The Twister performs in varying soil conditions, cover crops, and tillage practices.



The Twister fractures the sidewall as it rolls through the field.



The Twister's rounded center design prevents mud buildup.



A Twister Closing Wheel can be installed in as little as five minutes.



WHAT OUR FARMERS SAY

“I was able to close the furrow in heavy, no-till soybean residue, which helped ensure near-perfect emergence. This resulted in my highest no-till corn yields to date. Another bonus was being able to use this closing wheel in conventional till.”

Steve Pitstick, IL



READ MORE
TESTIMONIALS

MODEL OPTIONS & PLANTER COMPATIBILITY



NEW: 6200-007 Twister Short Poly Closing Wheel

For crops like cotton and sugar beets



6200-005 Twister Poly Closing Wheel



NEW: 6200-009 Twister Cast Closing Wheel

Each wheel weighs 16 lbs.



6200-006 Ring-Only Insert

Also available: 6200-008 Short Ring-Only Insert

Setup options:

- Full wheel assembly easily replaces factory closing wheels on most planters
- Available with optional drag chain
- Ring-only insert option installs on most factory wheels

Compatible with:

- John Deere MaxEmerge™ Plus, XP, and XP Pro
- Kinze '93–current
- AGCO White and Massey Ferguson
- Great Plains
- Monosem
- Precision Planting Ready Row Unit
- NEW: Case IH 1200 Series planters (requires conversion kit)

VIEW OUR OTHER
CLOSING WHEELS



READY TO PUT A NEW SPIN ON CLOSING WHEEL PERFORMANCE?

Call toll free: 1.800.447.5777



EMAIL YOUR QUESTIONS: info@yetterco.com
VIEW OUR FULL PRODUCT LINEUP: yetterco.com