



**OWNER'S MANUAL
8500 SERIES HEAD CART
ALL MODELS**

2565-799_A 04/2017



Yetter Manufacturing

Founded 1930

Colchester, IL 62326

Call: (309)776-4111

Fax: (309)776-3222

Website: www.yetterco.com

Email: info@yetterco.com

FOREWORD

You've just joined an exclusive but rapidly growing club. For our part, we want to welcome you to the group and thank you for buying a Yetter product.

We hope your new Yetter products will help you achieve two goals: increase your productivity and increase your efficiency so that you may generate more profit.



This **SAFETY ALERT SYMBOL** indicates important safety messages in the manual. When you see this symbol, be alert to the possibility of **PERSONAL INJURY** and carefully read the message that follows.

The word **NOTE** is used to convey information that is out of context with the manual text. It contains special information such as specifications, techniques and reference information of a supplementary nature.

The word **IMPORTANT** is used in the text when immediate danger will occur to the machine due to improper technique or operation.

It is the responsibility of the user to read the owner's manual, comply with safe and correct operating procedure, and to lubricate and maintain the product according to the information listed in the owner's manual.

The user is responsible for inspecting their machine and for having parts repaired or replaced when it is damaged or worn. Continued use of a damaged or worn part can cause injury or more extensive damage to the machine.

If you have any questions regarding the information given in this manual, consult your local Yetter dealer or contact:

Yetter Manufacturing Co.
(309)776-4111
(800)447-5777

Website: www.yetterco.com

Email: info@yetterco.com

WARRANTY

Yetter Manufacturing warrants all products manufactured and sold by it against defects in material. This warranty being expressly limited to replacement at the factory of such parts or products that appear to be defective after inspection. The warranty does not obligate Yetter Manufacturing to bear the cost of labor in replacement of parts. It is the policy of the Company to make improvements without incurring obligations to add them to any unit sold prior. No warranty is made, or authorized to be made, other than herein set forth. This warranty is in effect for one year after purchase.

Dealer: _____

Yetter Manufacturing warrants its own products and cannot be held responsible for damages to equipment on which they are mounted.

TABLE OF CONTENTS

SAFETY	4-5
GENERAL INFORMATION	6-8
BOLT TORQUE.....	9
SET-UP	10-11
OPERATION	12-13
MAINTENANCE	14
PART IDENTIFICATION	15-21

SAFETY INFORMATION

BE ALERT!

YOUR SAFETY IS INVOLVED

It is the responsibility of the owner, operator, or supervisor to know and instruct everyone using this machine at the time of initial assignment and at least annually thereafter, of the proper operation, precautions, and work hazard which exist in the operation of the machine in accordance with OSHA regulations.

SAFETY IS NO ACCIDENT

The following safety instructions combines with common sense will save your equipment from needless damage and the operator from unnecessary exposure to personal hazard. Pay special attention to the caution notes in the text. Review this manual each year and with new and experience operators.



1. Read and understand the operator's manual before operating this machine. Failure to do so is considered a misuse of the equipment.
2. Make sure equipment is secure before use.
3. Always keep children away from equipment while in operation.
4. Make sure everyone that is not directly involved with the operation is clear of the work area before use.
5. Be sure all safety devices, shield, and guards are in place and functional before beginning operation
6. Shut off all power to the unit prior to adjustment, servicing, or cleaning.
7. Keep hands, feet, and clothing away from moving parts. It is a good idea to remove all jewelry before starting the operation.
8. Visually inspect the machine periodically during operation for signs of excessive vibration, loose fasteners, and unusual noises.

SAFETY INFORMATION

During Operation

- Regulate speed to field conditions. Maintain complete control at all times.
- Never lubricate equipment when in operation.
- Use extreme care when operating close to ditches, fences, or on hillsides.
- Do not leave towing vehicle unattended with engine running.
- Do not adjust the transporter with the head positioned over the unit.

Before Operation

- Secure the transport chains to towing vehicle before transporting. **DO NOT** transport without the chains.
- Check for proper function of all available transport lights. Make sure that all reflectors are clean and in place on the machine.
- This implement may not be equipped with brakes. Ensure that the towing vehicle has adequate weight and braking capacity to tow this unit.
- Before transporting, secure the head with straps. Replace damaged or worn straps, and avoid putting straps over rough or sharp surfaces. Use appropriate number and capacity rating.

During Transport

- Comply with state and local laws governing highway safety when moving machinery.
- Use transport lights as required by local laws to adequately warn operators of other vehicles.
- Use good judgement when transporting equipment on highways. Regulate speed to road conditions and maintain complete control.
- Slow down before making sharp turns to avoid tipping. Drive slowly over rough ground and side slopes.
- It is probable that this implement is taller, wider, and longer than the towing vehicle. Become aware of and avoid all obstacles and hazards in the travel path of the equipment such as power lines, ditches, etc.

GENERAL INFORMATION

8500 Series Head Cart Trailers



Model No.	Description	Est. Wt.
8500-027	27' Head Cart	3260 lbs
8500-032	32' Head Cart	4103 lbs
8500-038	38' Head Cart	4358 lbs
8500-043	43' Head Cart	4741 lbs
8500-048	48' Head Cart	4970 lbs

Optional Equipment

Model No.	Description	Est. Wt.
8500-001	Marker Pole	3 lbs
8500-144	Ball Hitch 2-5/16"	10 lbs
8500-155	2 5/16" Coupler to Replace Clevis	14 lbs
8500-166	Drop Pin Hitch	14 lbs

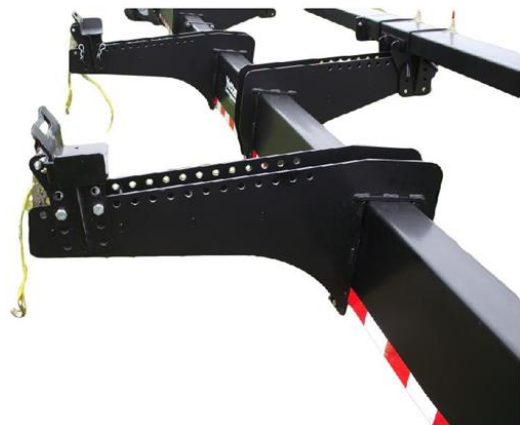
Service Kits

Model No.	Description	Est. Wt.
8500-120	Rear Bearing and Drum Replacement Kit (1 Per Wheel)	40 lbs
8500-121	Lugnut and Stud Replacement Kit (1 Per Wheel)	4 lbs
8500-122	Front and Rear Bearing Replacement Kit (1 Per Wheel)	7 lbs
8500-123	Brake Replacement Kit (1 Per Axle)	10 lbs
8500-124	Front Bearing and Hub Replacement Kit (1 Per Wheel)	26 lbs

GENERAL INFORMATION

8500 Series Head Cart Trailers

- Central beam design with adjustable truss supports
- Spare cutter bar storage
- Dual 12" rest brackets to fit any header platform with tool-less adjustments
- Drum brakes on rear axle(s)
- Front and rear torsion axles providing a smooth ride
- Molded front fenders protecting head and truck from road debris
- Tongue rotates around to main beam for easy winter storage and shipment
- 24" of telescoping hitch adjustment
- Dual safety chains with standard clevis hitch. Options for drop-pin and ball hitch attachments
- LED lights and seven pin bladed receptacle for standard towing vehicles
- Full length DOT reflective tape
- Tool box – 17 3/4" x 8" x 7"
- Full width rear light support brackets
- Durable black powder coat finish
- Made in the USA, manufactured and shipped from Macomb, IL

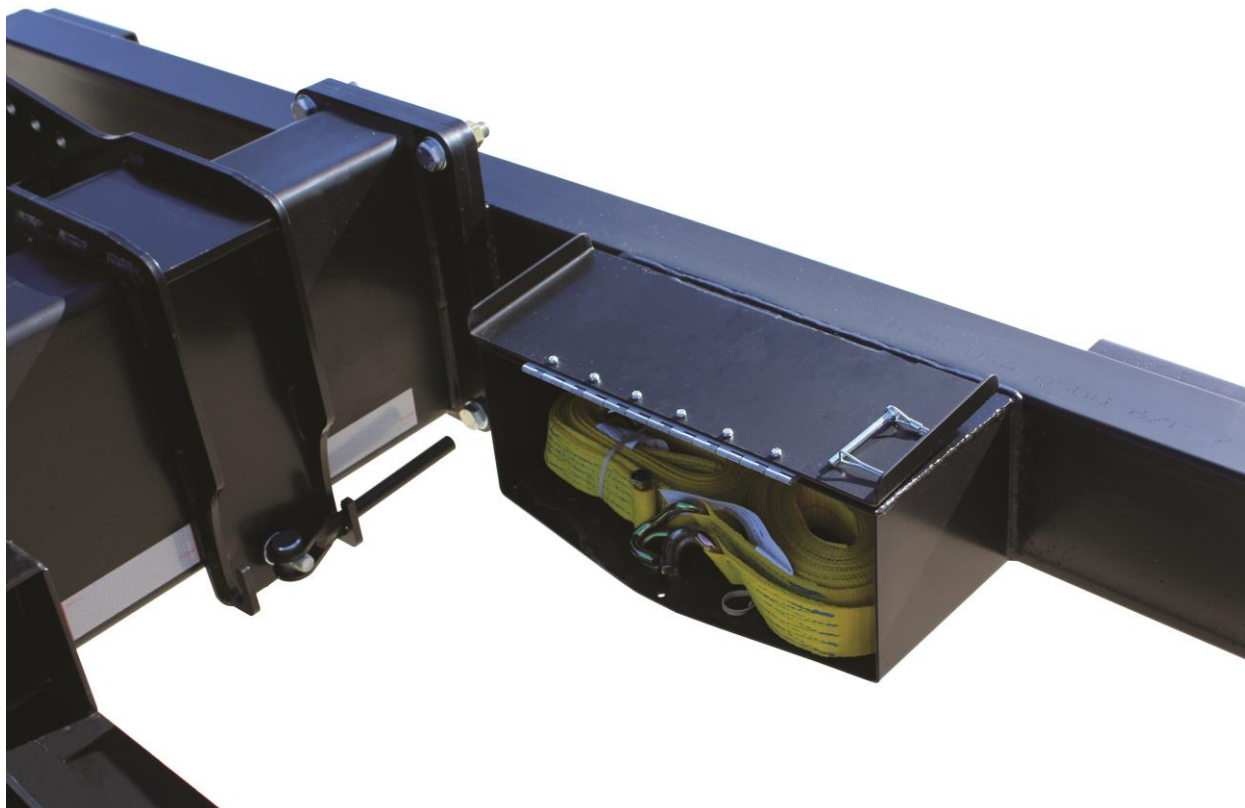


GENERAL INFORMATION

8500 Series Head Cart Trailers

Technical Specifications

	8500-027	8500-032	8500-038	8500-043	8500-048
Overall Length (in)	429	489	561	621	681
Overall Width (in)	102	102	102	102	102
Overall Height (in)	44	44	44	44	44
Unloaded Weight (lb)	3260	4103	4391	4741	4970
Max Gross Weight (lb)	12000	18000	18000	18000	18000
Max Usable Weight (lb)	8740	13897	13609	13259	13030
Max Drawbar Pull (lb)	17600	17600	17600	17600	17600
Chassis Style	Single Beam	Single Beam	Single Beam	Single Beam	Single Beam
Axle Configuration	Single	Tandem	Tandem	Tandem	Tandem
Axle Stud Pattern	8 x 9/16"	8 x 9/16"	8 x 9/16"	8 x 9/16"	8 x 9/16"
Tire Size	ST235/80R16	ST235/80R16	ST235/80R16	ST235/80R16	ST235/80R16
Max Tire PSI	65	65	65	65	65
Electric Brakes	Standard	Standard	Standard	Standard	Standard
Over Run Brakes	Standard	Standard	Standard	Standard	Standard
Cutter Bar Storage	Standard	Standard	Standard	Standard	Standard
Lights	Standard	Standard	Standard	Standard	Standard
Front Fenders	Standard	Standard	Standard	Standard	Standard
Accessory Box	Standard	Standard	Standard	Standard	Standard
License Plate Lights	Wire Leads Only	Wire Leads Only	Wire Leads Only	Wire Leads Only	Wire Leads Only
Rear Fenders	Optional	Optional	Optional	Optional	Optional
Marker Pole Kit	Optional	Optional	Optional	Optional	Optional



BOLT TORQUE

Important: Over tightening hardware can cause as much damage as under tightening. Tightening hardware beyond the recommended range can reduce its shock load capacity.

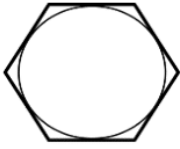


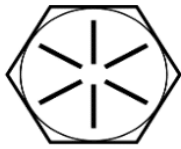
All hardware used on the 8500 Series Head Cart is Grade 5 unless otherwise specified. If hardware must be replaced, be sure to replace it with hardware of equal size, strength, and thread type.

The chart below is a guide for proper torque. Use it unless a specified torque value is given elsewhere in the manual.

Torque is the force you apply to the wrench handle times the length of the handle.

Use a torque wrench wherever possible

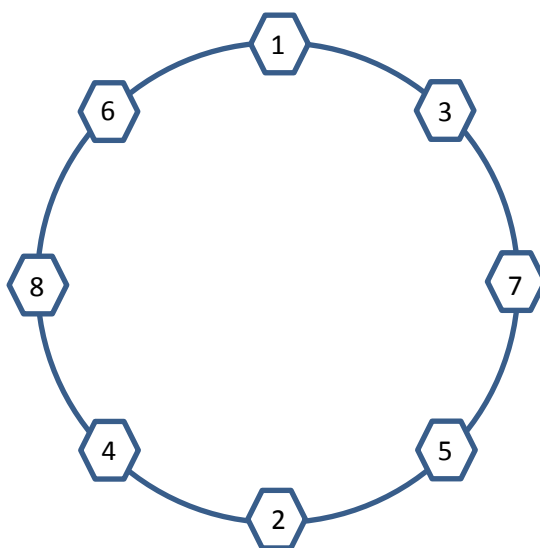
The following table shows torque in ft-lbs for coarse thread hardware.

Bolt Diameter and Threads per Inch	 Grade 2	 Grade 5	 A-325	 Grade 8
	Units	ft-lbs	ft-lbs	ft-lbs
1/4	6	10	14	
5/16	12	20	30	
3/8 – 16	25	35	50	
7/16 – 14	35	55	80	
1/2 – 13	55	85	125	
9/16 – 12	75	125	175	
5/8 – 11	105	170	235	
3/4-10	185	305	425	
7/8 – 9	170	445	690	
1-8	260	670	1030	
1 1/8 – 7	365	900	1460	
1 1/4 - 7	515	1275	2060	
1 3/8 – 6	675	1675	2700	
1 1/2 - 6	900	2150	3500	
1 3/4 – 5	1410	3500	5600	

SET UP INSTRUCTIONS

Tires and Wheels

1. Using a safe lifting device and jack stands rated at a minimum of 2500 lbs, raise the frame at least 16 ½" high
2. Install wheels and tires onto the axles and secure with provided lug nuts. Refer to the table below for torque sequence and value.
 - Start all lug nuts by hand to prevent cross threading
 - Tighten nuts in the sequence shown below
 - Lug nuts should be torqued before first road use and after each wheel removal. Check and re-torque after the first 50 miles. A periodic check during regular service is recommended.



Wheel Size	Stud Size	1 st Stage	2 nd Stage	3 rd Stage
16"	9/16"	25 lb-ft	70 lb-ft	130 lb-ft

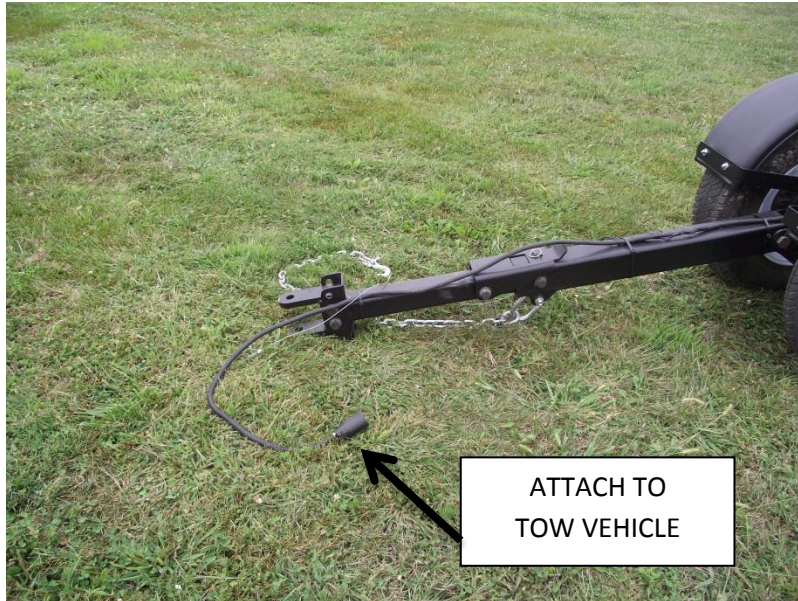
SET UP INSTRUCTIONS

Test Lights

Make sure no wires are pinched or cut during installation.

Keep all wires concealed to prevent them from getting caught on obstructions.

Attach 8500 Head Cart and wiring harness to tow vehicle to test the lights.



Check the following:

- Tail lights
- Brake lights
- Left and right turn signals with and without brakes applied

Note: If any of the light tests fail, check wiring harness on tow vehicle for proper wiring.

OPERATION

Hitching

1. Position towing vehicle in front of header transport. Lift tongue latch handle and extended inner tongue extension enough to attach to vehicle drawbar using a $\frac{3}{4}$ " minimum diameter hitch pin and lock in place. Back-up towing vehicle to re-latch tongue.
2. Cross transport chains and connect to towing vehicle.

Note: Before hitching the header transport to any vehicle drawbar, be sure the pin hole is located close enough to the rear of the vehicle drawbar to allow the header transport tongue clevis to swing 90 degrees right or left of the centerline without interference.

Note: When hitching, be sure not to pinch wire harness. Position the wire harness away from all pinch points and any areas that may wear the harness.



CAUTION: BE SURE TRANSPORT TONGUE IS LATCHED BEFORE TRANSPORTING, OTHERWISE JARRING COULD OCCUR WHEN STOPPING UNIT, CAUSING A SUDDEN SHIFT OF LOAD.

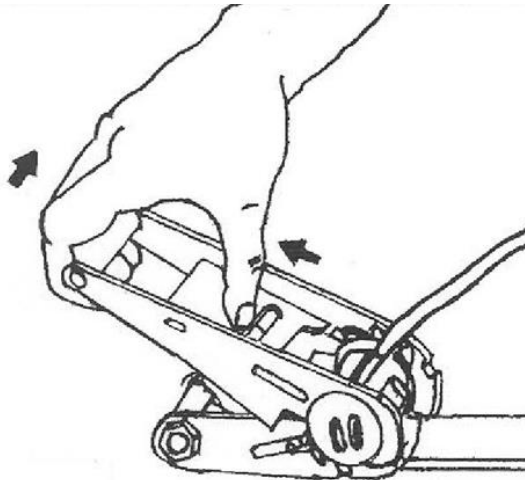


CAUTION: ALWAYS USE TRANSPORT CHAINS WHEN TRANSPORTING IMPLEMENTS. FAILURE TO USE TRANSPORT CHAIN COULD CAUSE PERSONAL INJURY OR DAMAGE IF IMPLEMENT BECOMES DISENGAGED.

OPERATION

Tie-Down Brackets

- The tie down brackets consist of two heavy duty strap assemblies which secure current design headers to the transport. For proper installation follow steps as shown.
1. Loosen strap by pulling up ratchet handle and lock in open position



CAUTION: BE SURE RATCHES, WEBBINGS, AND HOOKS ARE IN PROPER WORKING CONDITION SO THAT DAMAGE DOES NOT OCCUR DUE TO LOSS OF HEADER FROM TRANSPORT

Note: Before tightening, be sure header is resting against backstops on lower rest brackets.

Note: Be sure tie down bracket assemblies are secured to transport directly below the section on the header that the tie down hook is being attached to. **DO NOT ATTACH BRACKET AND PULL STRAP AT AN ANGLE TO THE BRACKET TO SECURE.** Doing so could result in unnecessary stress and wear to tie down webbing.

2. Slide tie down bracket across lower rest tube and secure in appropriate location under header by inserting carriage bolt, flat washer and knob. Tighten into position by turning knob clockwise.

Note: It is recommended that the tie downs be secured to a main bar or sufficient bar/tube on the combine head that is rigid enough to support total weight of header. Failure to do so could result in damage to the combine header.



CAUTION: BE SURE ALL SHARP EDGES ARE REMOVED SO THAT WEBBING DOES NOT BECOME CUT OR FRAYED.

MAINTENANCE

Bearings

- Every 12,000 miles or once a year, repack wheel bearings with grease
 - Inspect bearings for signs of wear such as discoloration of rollers, spalling, pits, or metal flakes. Rollers and race should look shiny and new if in good condition. If any of these signs are found, replace bearings immediately.

Brakes

- Every 12,000 miles or once a year, inspect brake shoes for wear. Be sure to replace brake shoes before friction material wears away entirely. Failure to do so can cause damage to the brake drum.

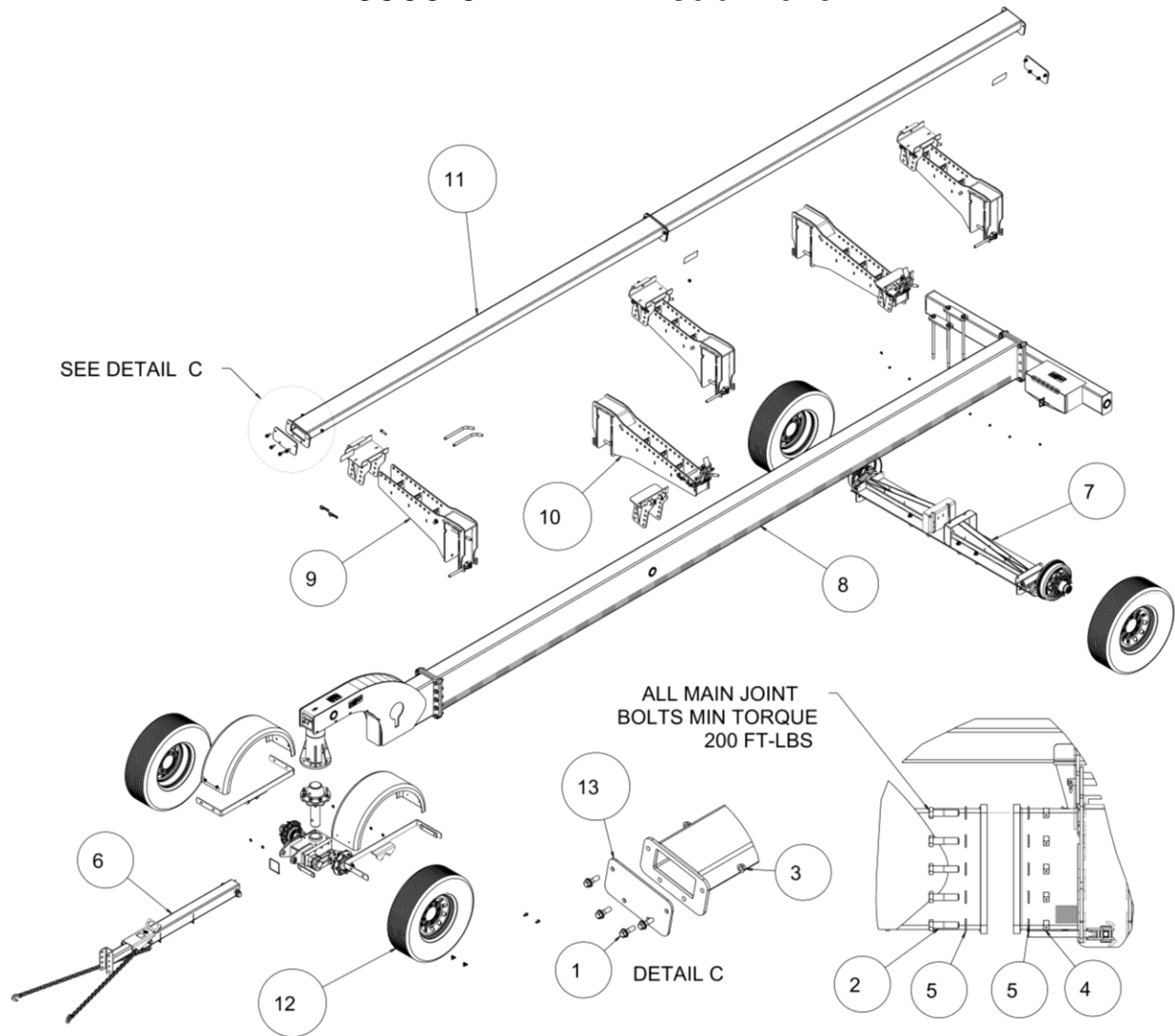
Service Kits

For a visual part breakdown, go to the page listed.

Model No.	Description	Page
8500-120	Rear Bearing and Drum Replacement Kit (1 Per Wheel)	37
8500-121	Lugnut and Stud Replacement Kit (1 Per Wheel)	38
8500-122	Front and Rear Bearing Replacement Kit (1 Per Wheel)	39
8500-123	Brake Replacement Kit (1 Per Axle)	40
8500-124	Front Bearing and Hub Replacement Kit (1 Per Wheel)	41

PART IDENTIFICATION

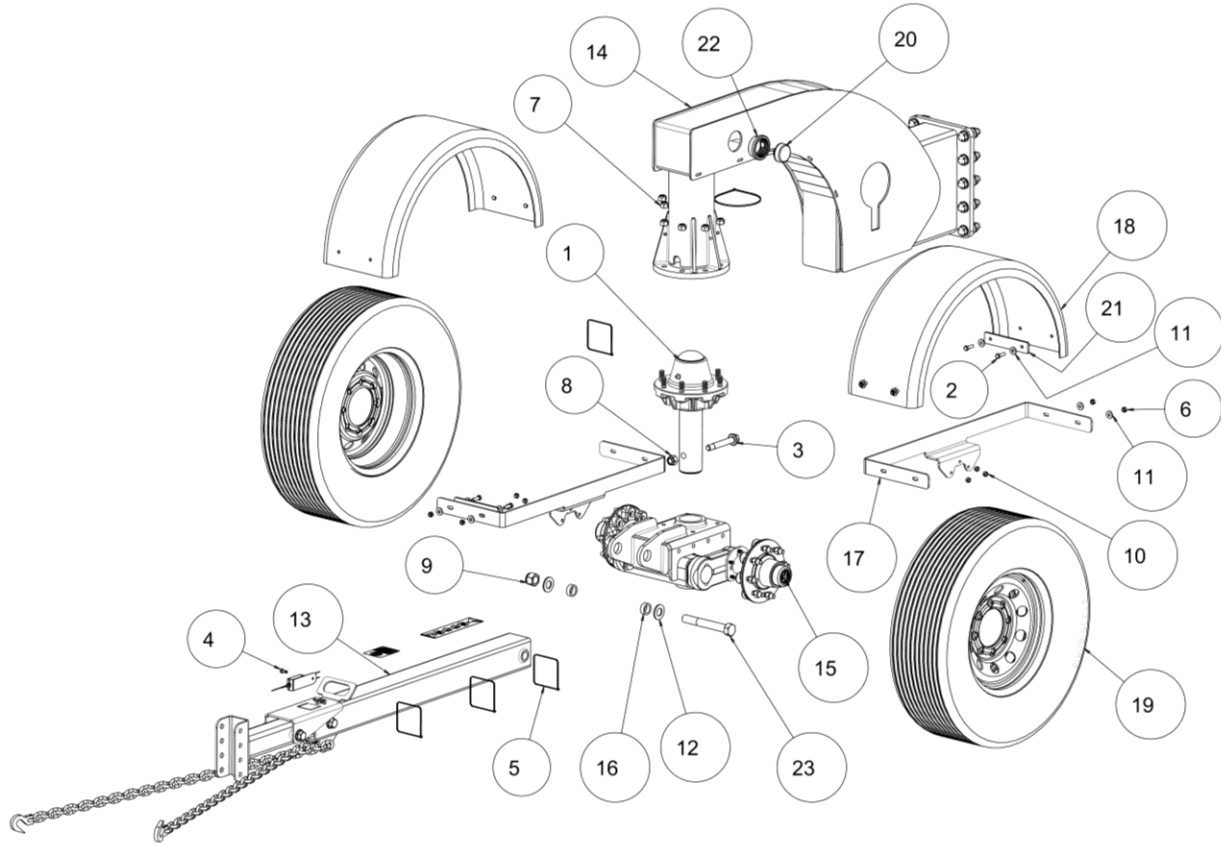
8500-027 – 27' Head Cart



ITEM	PART #	DESCRIPTION	QTY
1	2502-307	1/2-13 X 1-1/2 FLANGE SERRATED HEX BOLT PLATED GR 5	12
2	2502-409	3/4-10 X 3 HHCS GR 5 ZP	14
3	2520-361	1/2-13FLANGE WHZLCK HXNT, GR 5, ZP	12
4	2520-518	3/4-10 LOCK HEX NUT, GR 8, ZP	18
5	2526-504	3/4 SAE FLATWASHER, ZP	41
6	8500-100	EXTENDABLE TONGUE ASSEMBLY	1
7	8500-101	REAR AXLE ASSEMBLY	1
8	8500-208	MAIN 22FT SECTION W.A.	1
9	8500-212	UPPER SUPPORT W.A.	3
10	8500-215	LOWER SUPPORT W.A.	2
11	8500-223	HEADER REST 27FT CART W.A.	2
12	8500-338	TIRE AND WHEEL ASSEMBLY	4
13	8500-397	END CAP, HEADER REST	2

PART IDENTIFICATION

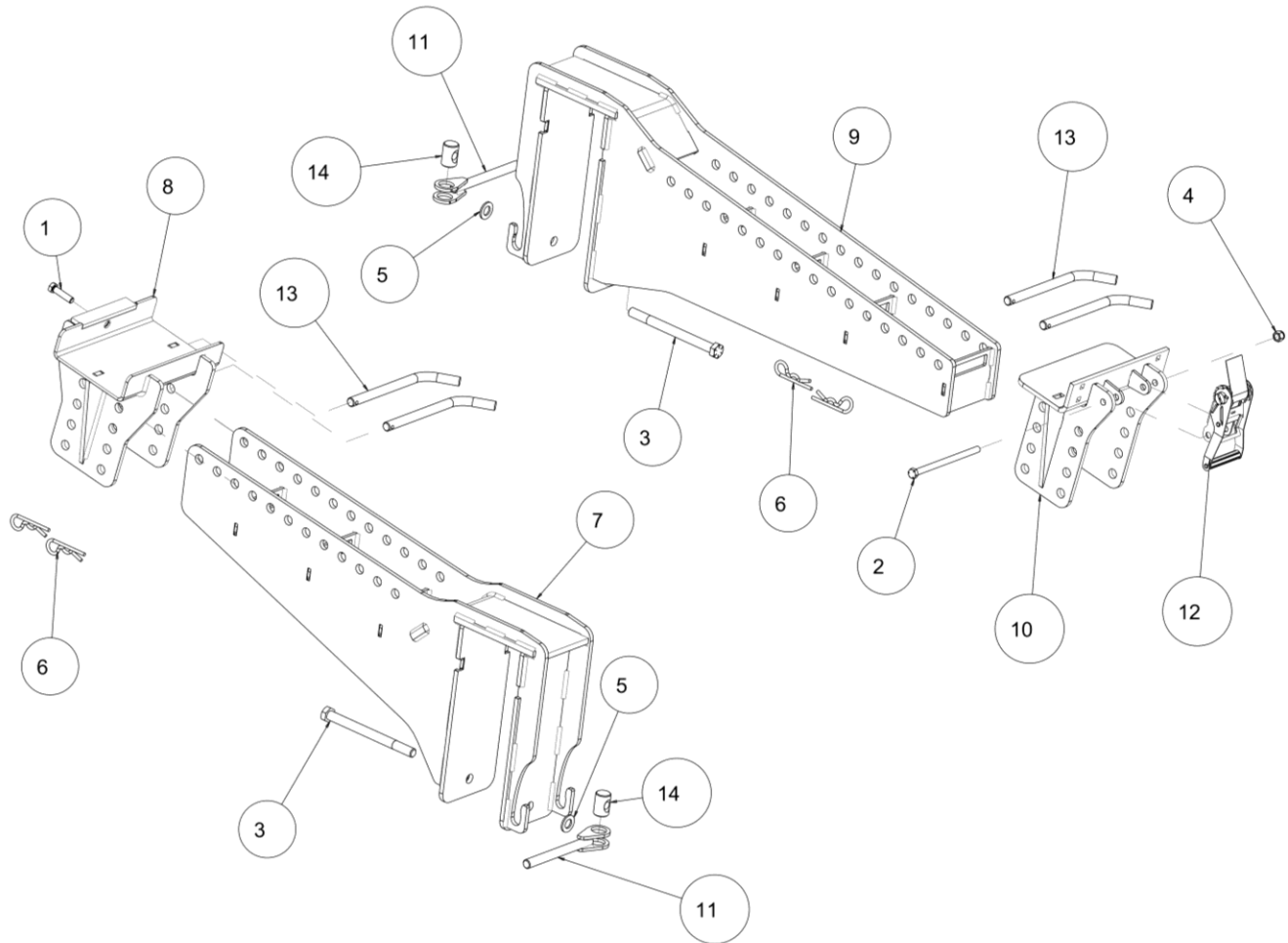
8500-027 – 27' Head Cart



ITEM	PART #		DESCRIPTION	QTY
1	2000-157	75-8 HUB ASSEMBLY		1
2	2502-244	3/8-16 X 1-1/4 HHCS GR 5 ZP		8
3	2502-425	3/4-10 X 5 HHFS GR8, ZP		1
4	2513-509	5/16-18X3/4TYP 23HHSTWHS ZP		1
5	2515-556	ZIP TIE		4
6	2520-255	3/8-16 LOCK HEX NUT ZP		8
7	2520-370	WHEEL NUT #N913557		8
8	2520-516	3/4-10 NYLON INSERT LCKNT, GR 2, ZP		1
9	2520-563	1-8 NYLON LOCK NUT GR C, ZP		1
10	2520-600	3/8-24 UNF 2B HEX TOP LOCK NUT, GRADE C		6
11	2526-251	3/8 STANDARD FLATWASHER ZP		16
12	2526-542	1" SAE FLAT WASHER ZP		2
13	8500-100	EXTENDABLE TONGUE ASSEMBLY		1
14	8500-200	GOOSENECK W.A.		1
15	8500-203	6500LB AXLE W.A.		1
16	8500-335	BUSHING		2
17	8500-336	FRONT FENDER MOUNT		2
18	8500-337-D	VG09 JONESCO FENDER, DRILLED		2
19	8500-338	TIRE AND WHEEL ASSEMBLY		4
20	8500-370	AMBER MARKER LIGHT		4
21	8500-384	CLAMP PLATE, INNER FENDER		4
22	8500-387	GROMMET, MARKER		6
23	19H3534	1-8 X 7-1/2 HHCS GR 8 ZP		1

PART IDENTIFICATION

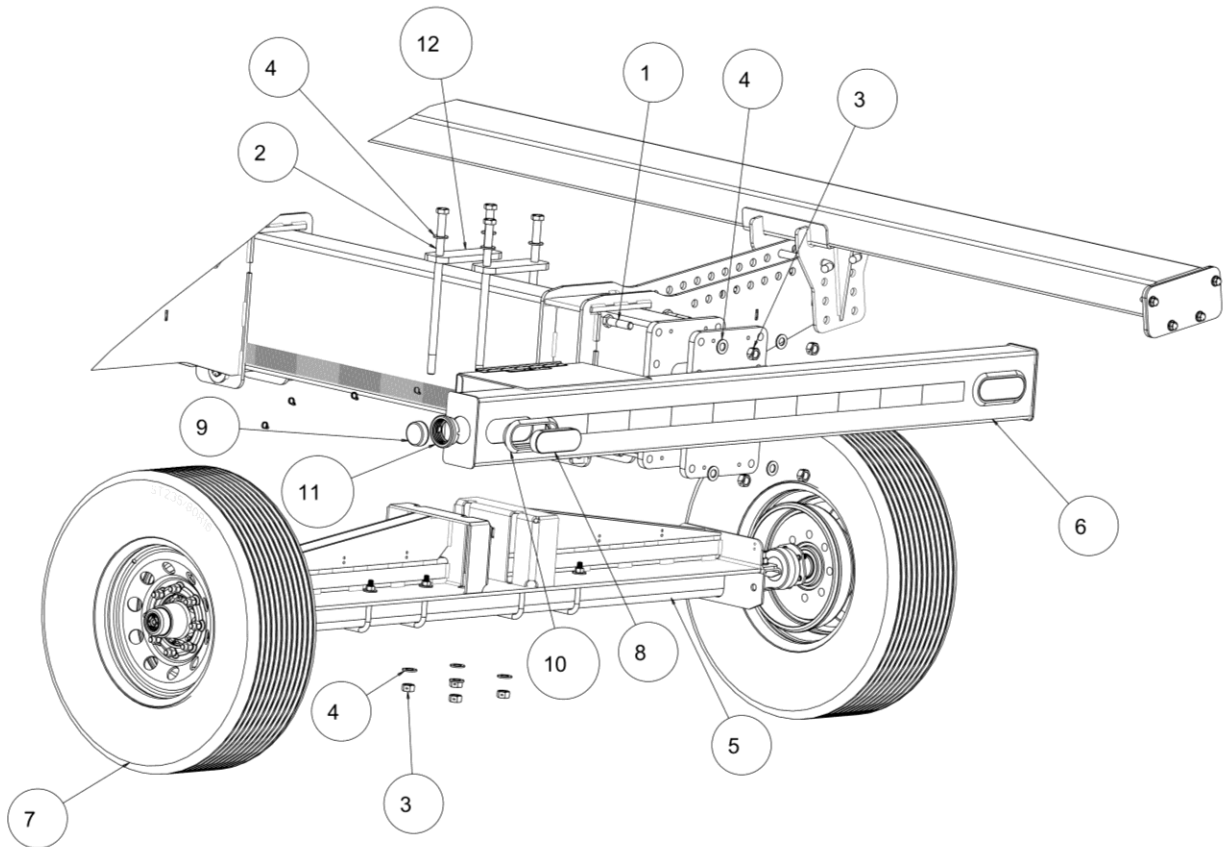
8500-027 – 27' Head Cart



ITEM	PART #	DESCRIPTION	QTY
1	2502-350	1/2-13 X 2 HHCS, GR 8, ZP	3
2	2502-369	1/2-13 X 8 HHCS GR. 5 ZP	2
3	2502-431	3/4-10 X 9 HHCS GR8, ZP	5
4	2520-363	1/2-13 NYL INSERT LOCKNUT, GR 2	2
5	2526-504	3/4 SAE FLATWASHER, ZP	41
6	2570-452	COTTER PIN, 1/4 X 4 STEEL ZP	10
7	8500-212	UPPER SUPPORT W.A.	3
8	8500-213	UPPER HEADER SUPPORT W.A.	3
9	8500-215	LOWER SUPPORT W.A.	2
10	8500-216	LOWER HEADER REST W.A.	2
11	8500-217	ADJUSTMENT HANDLE	5
12	8500-376	2" RATCHET	2
13	8500-377	3/4 DIAMETER PULL PIN	10
14	8500-378	THREADED PIN	5

PART IDENTIFICATION

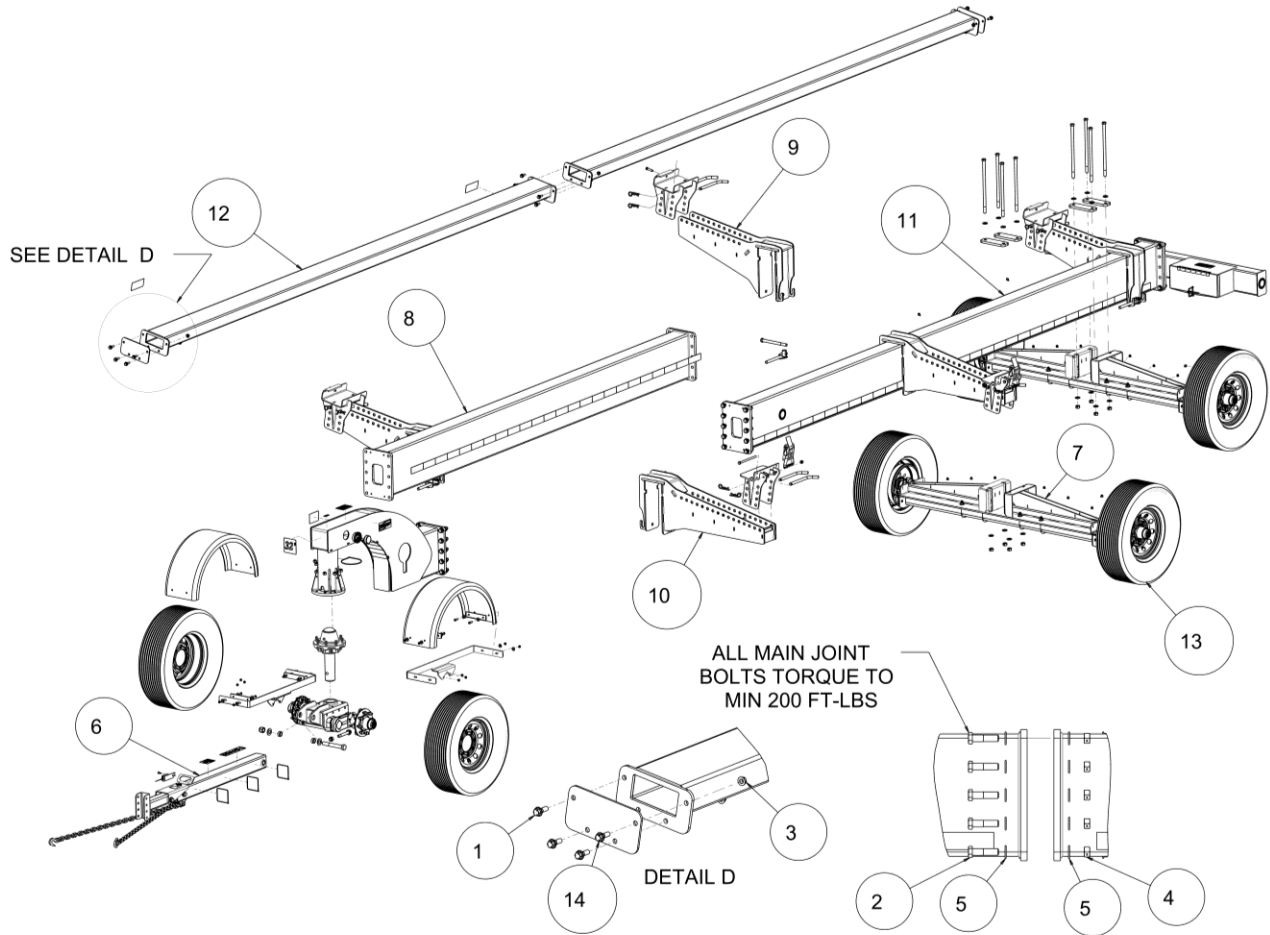
8500-027 – 27' Head Cart



ITEM	PART #		DESCRIPTION	QTY
1	2502-409	3/4-10 X 3 HHCS GR 5 ZP		14
2	2502-429	3/4-10 X 16.5 HHCS GR8, ZP		4
3	2520-518	3/4-10 LOCK HEX NUT, GR 8, ZP		18
4	2526-504	3/4 SAE FLATWASHER, ZP		41
5	8500-101	REAR AXLE ASSEMBLY		1
6	8500-102	TAIL LIGHTS ASSEMBLY		1
7	8500-338	TIRE AND WHEEL ASSEMBLY		4
8	8500-371	LED TAIL LIGHT		2
9	8500-372	RED MARKER LIGHT		2
10	8500-386	6.5 X 2.25 OVAL GROMMET		2
11	8500-387	GROMMET, MARKER		6
12	8500-388	AXLE CLAMP PLATE		2

PART IDENTIFICATION

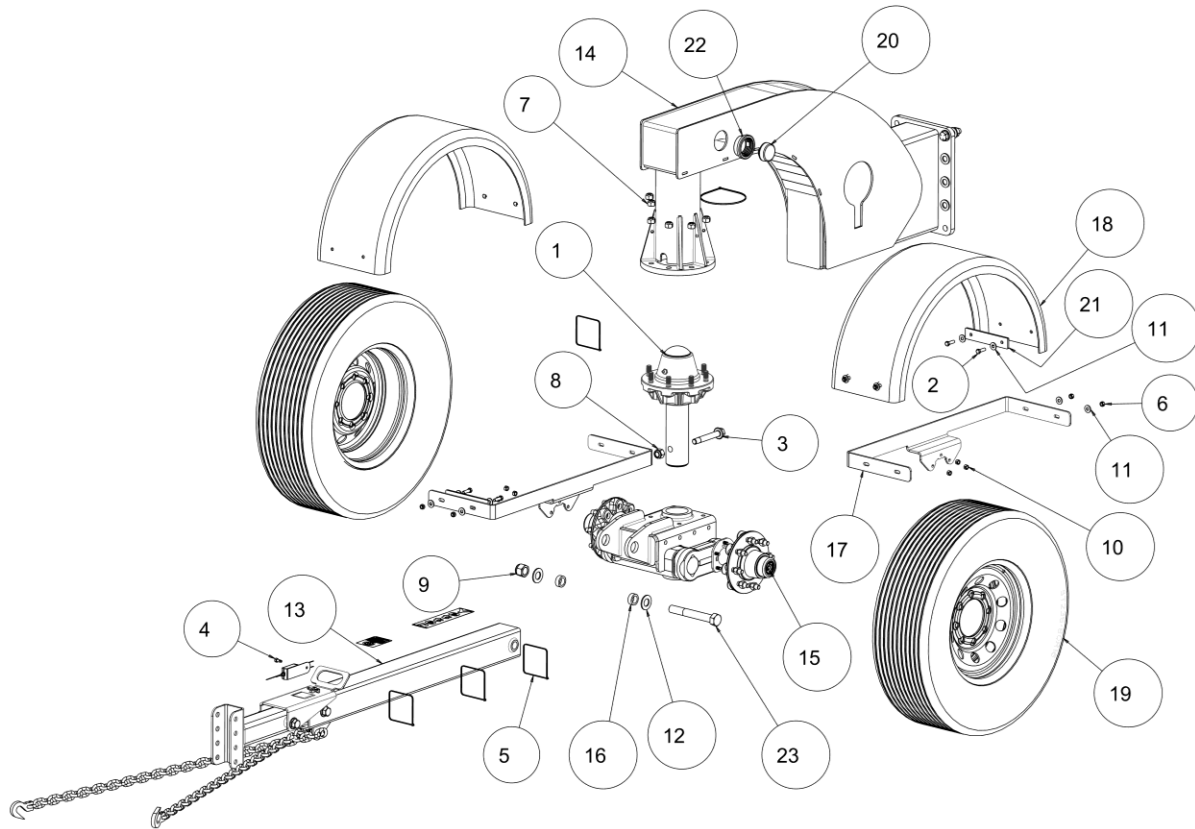
8500-032 – 32' Head Cart



ITEM	PART #	DESCRIPTION	QTY
1	2502-307	1/2-13 X 1-1/2 FLANGE SERRATED HEX BOLT PLATED GR 5	12
2	2502-409	3/4-10 X 3 HHCS GR 5 ZP	24
3	2520-361	1/2-13FLANGE WHZLCK HXNT, GR 5, ZP	12
4	2520-518	3/4-10 LOCK HEX NUT, GR 8, ZP	32
5	2526-504	3/4 SAE FLATWASHER, ZP	69
6	8500-100	EXTENDABLE TONGUE ASSEMBLY	1
7	8500-101	REAR AXLE ASSEMBLY	2
8	8500-207	MAIN TUBE FRONT SECTION W.A.	1
9	8500-212	UPPER SUPPORT W.A.	3
10	8500-215	LOWER SUPPORT W.A.	2
11	8500-218	MAIN 17FT SECTION W.A.	1
12	8500-222	HEADER REST 32FT CART W.A.	2
13	8500-338	TIRE AND WHEEL ASSEMBLY	6
14	8500-397	END CAP, HEADER REST	2

PART IDENTIFICATION

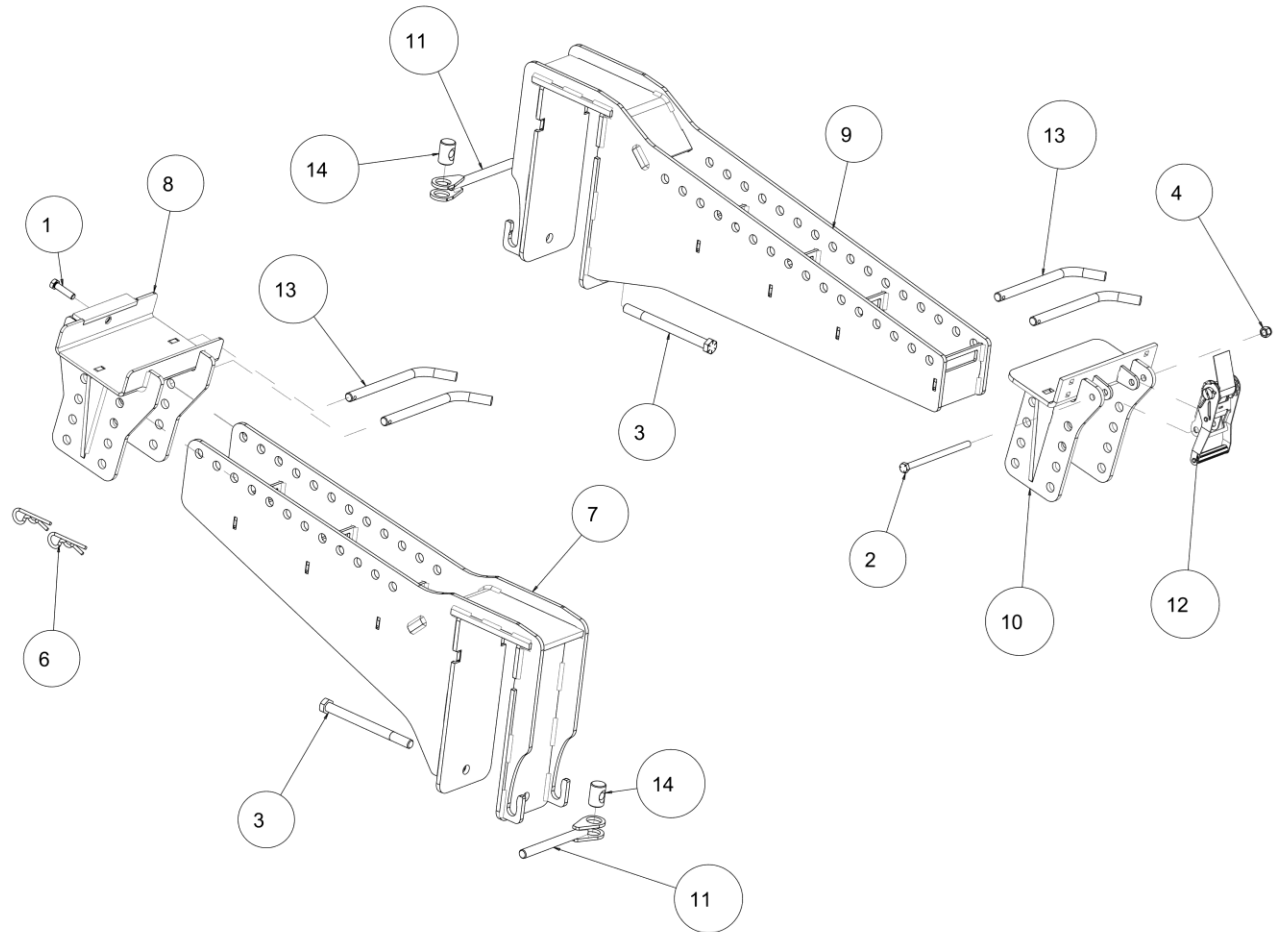
8500-032 – 32' Head Cart



ITEM	PART #	DESCRIPTION	QTY
1	2000-157	75-8 HUB ASSEMBLY	1
2	2502-244	3/8-16 X 1-1/4 HHCS GR 5 ZP	8
3	2502-425	3/4-10 X 5 HHFS GR8, ZP	1
4	2513-509	5/16-18X3/4TYP 23HHSTWHS ZP	1
5	2515-556	ZIP TIE	4
6	2520-255	3/8-16 LOCK HEX NUT ZP	8
7	2520-370	WHEEL NUT #N913557	8
8	2520-516	3/4-10 NYLON INSERT LCKNT, GR 2, ZP	1
9	2520-563	1-8 NYLON LOCK NUT GR C, ZP	1
10	2520-600	3/8-24 UNF 2B HEX TOP LOCK NUT, GRADE C	6
11	2526-251	3/8 STANDARD FLATWASHER ZP	16
12	2526-542	1" SAE FLAT WASHER ZP	2
13	8500-100	EXTENDABLE TONGUE ASSEMBLY	1
14	8500-200	GOOSENECK W.A.	1
15	8500-203	6500LB AXLE W.A.	1
16	8500-335	BUSHING	2
17	8500-336	FRONT FENDER MOUNT	2
18	8500-337-D	VG09 JONESCO FENDER, DRILLED	2
19	8500-338	TIRE AND WHEEL ASSEMBLY	6
20	8500-370	AMBER MARKER LIGHT	4
21	8500-384	CLAMP PLATE, INNER FENDER	4
22	8500-387	GROMMET, MARKER	6
23	19H3534	1-8 X 7-1/2 HHCS GR 8 ZP	1

PART IDENTIFICIATION

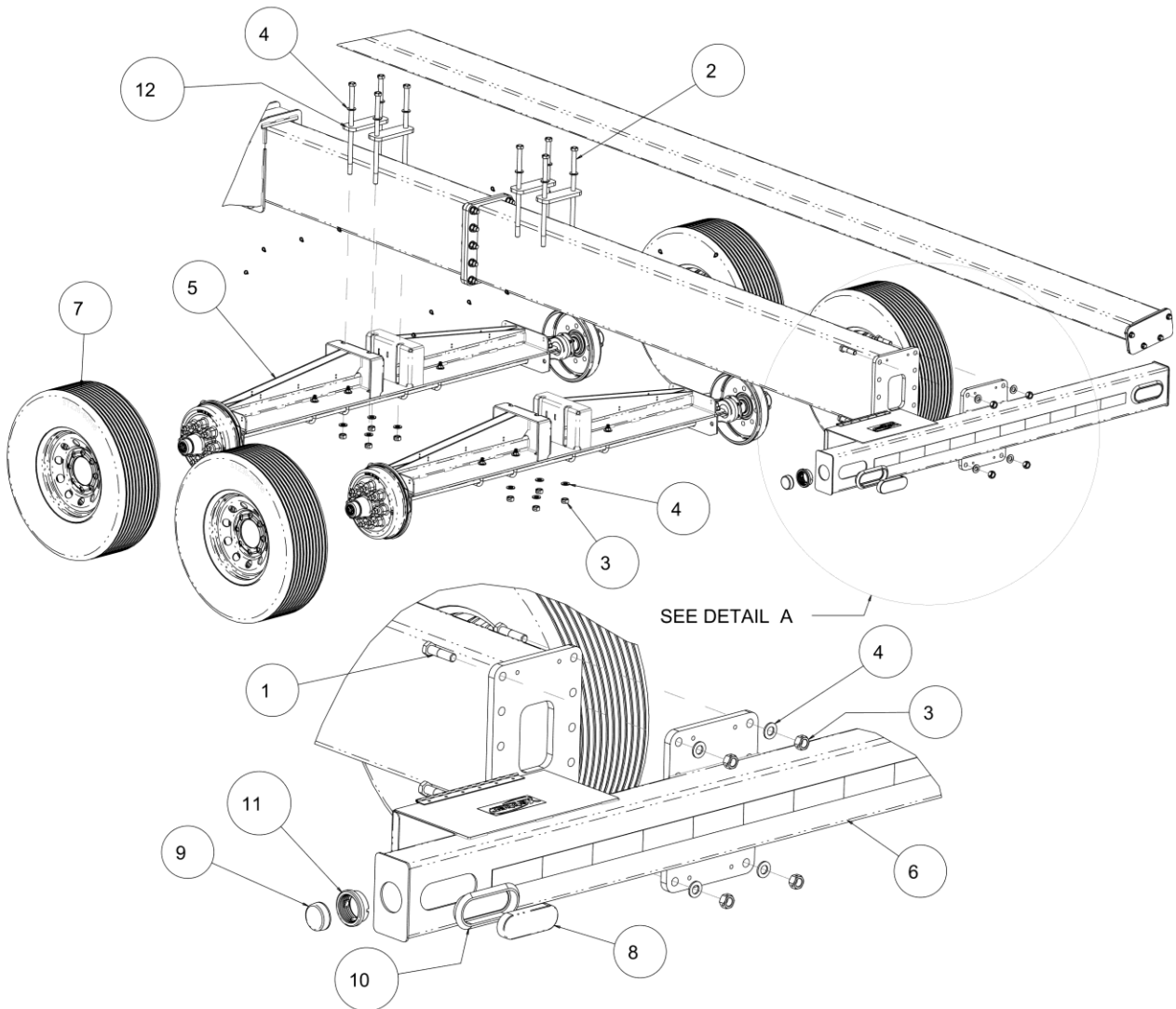
8500-032 – 32' Head Cart



ITEM	PART #	DESCRIPTION	QTY
1	2502-350	1/2-13 X 2 HHCS, GR 8, ZP	3
2	2502-369	1/2-13 X 8 HHCS GR. 5 ZP	2
3	2502-431	3/4-10 X 9 HHCS GR8, ZP	5
4	2520-363	1/2-13 NYL INSERT LOCKNUT, GR 2	2
5	2526-504	3/4 SAE FLATWASHER, ZP	69
6	2570-452	COTTER PIN, 1/4 X 4 STEEL ZP	8
7	8500-212	UPPER SUPPORT W.A.	3
8	8500-213	UPPER HEADER SUPPORT W.A.	3
9	8500-215	LOWER SUPPORT W.A.	2
10	8500-216	LOWER HEADER REST W.A.	2
11	8500-217	ADJUSTMENT HANDLE	5
12	8500-376	2" RATCHET	2
13	8500-377	3/4 DIAMETER PULL PIN	10
14	8500-378	THREADED PIN	5

PART IDENTIFICATION

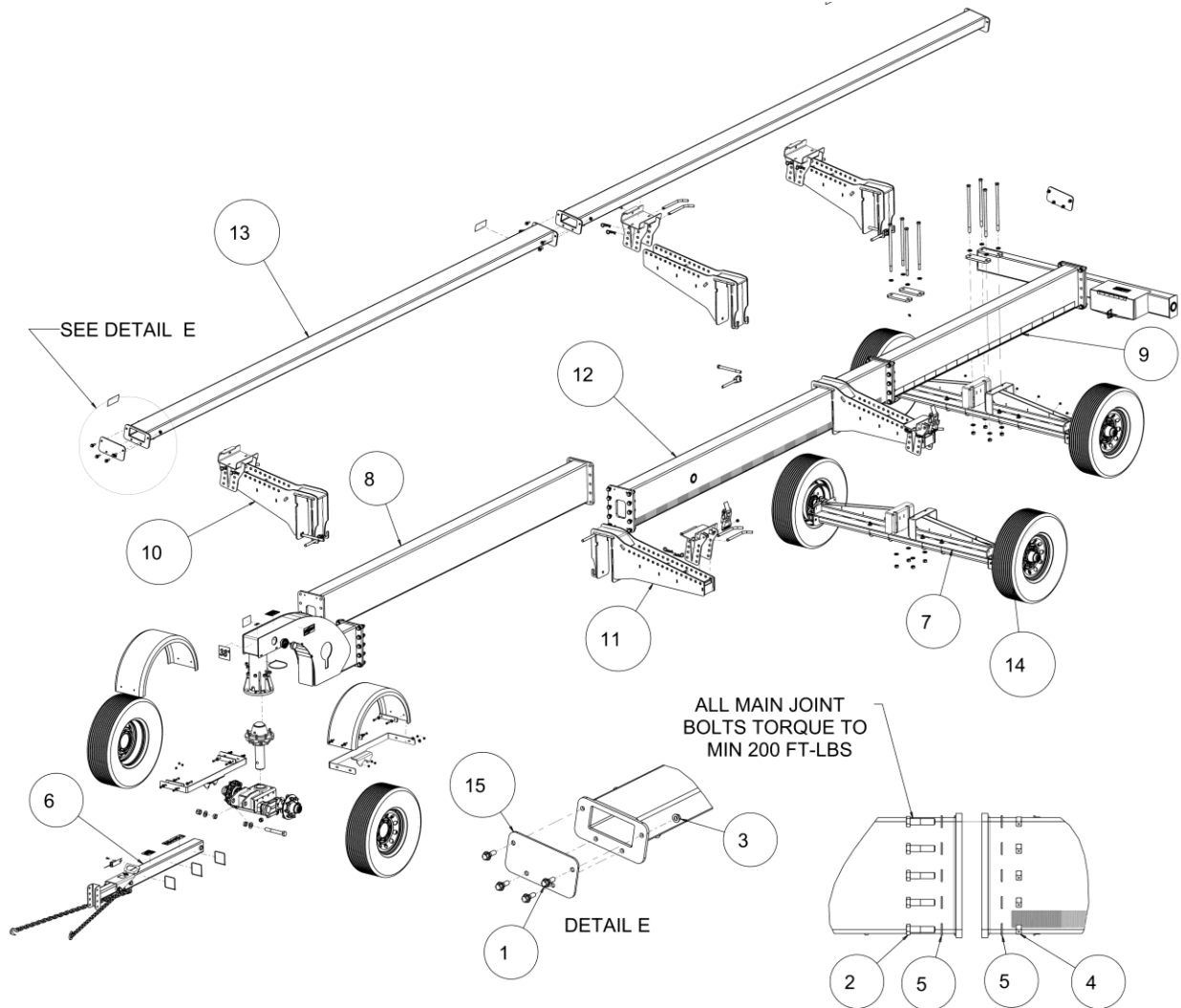
8500-032 – 32' Head Cart



ITEM	PART #		DESCRIPTION	QTY
1	2502-409	3/4-10 X 3 HHCS GR 5 ZP		24
2	2502-429	3/4-10 X 16.5 HHCS GR8, ZP		8
3	2520-518	3/4-10 LOCK HEX NUT, GR 8, ZP		32
4	2526-504	3/4 SAE FLATWASHER, ZP		69
5	8500-101	REAR AXLE ASSEMBLY		2
6	8500-102	TAIL LIGHTS ASSEMBLY		1
7	8500-338	TIRE AND WHEEL ASSEMBLY		6
8	8500-371	LED TAIL LIGHT		2
9	8500-372	RED MARKER LIGHT		2
10	8500-386	6.5 X 2.25 OVAL GROMMET		2
11	8500-387	GROMMET, MARKER		6
12	8500-388	AXLE CLAMP PLATE		4

PART IDENTIFICATION

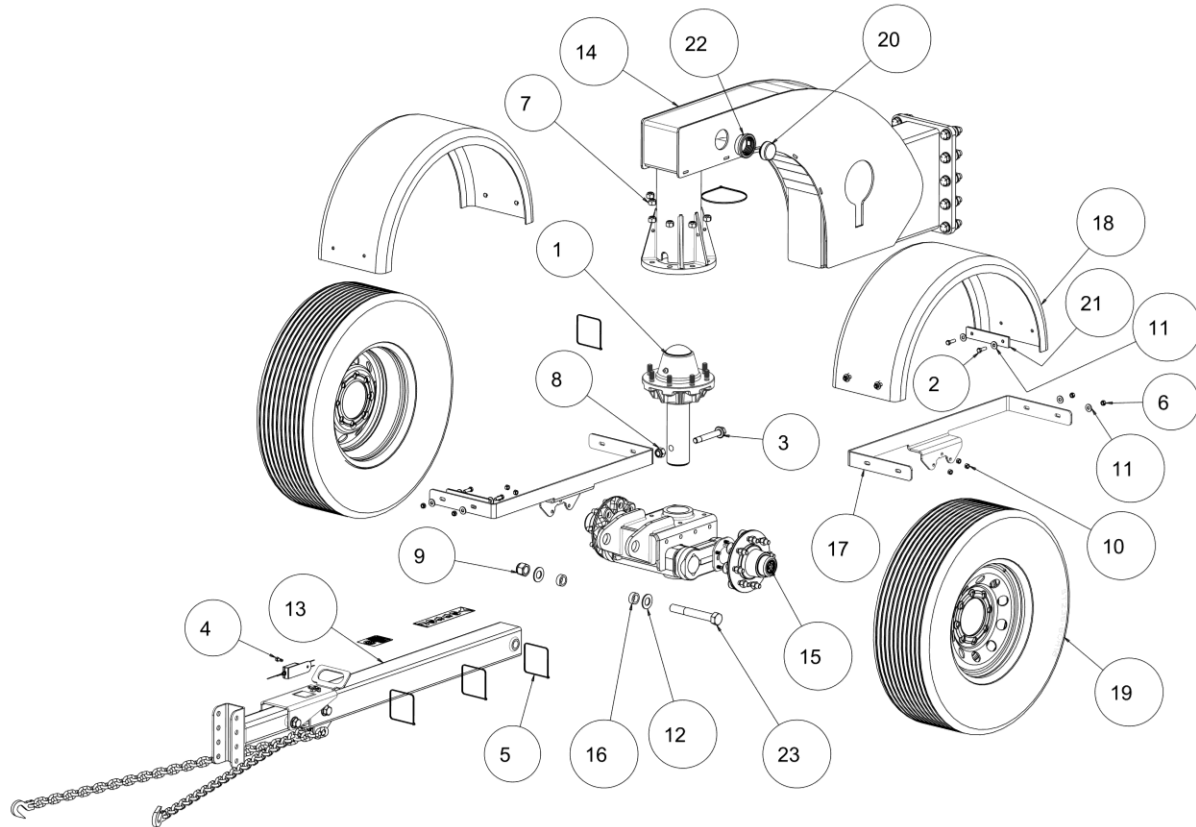
8500-038 – 38' Head Cart



ITEM	PART #	DESCRIPTION	QTY
1	2502-307	1/2-13 X 1-1/2 FLANGE SERRATED HEX BOLT PLATED GR 5	12
2	2502-409	3/4-10 X 3 HHCS GR 5 ZP	34
3	2520-361	1/2-13FLANGE WHZLCK HXNT, GR 5, ZP	12
4	2520-518	3/4-10 LOCK HEX NUT, GR 8, ZP	42
5	2526-504	3/4 SAE FLATWASHER, ZP	89
6	8500-100	EXTENDABLE TONGUE ASSEMBLY	1
7	8500-101	REAR AXLE ASSEMBLY	2
8	8500-207	MAIN TUBE FRONT SECTION W.A.	1
9	8500-209	TAIL END W.A.	1
10	8500-212	UPPER SUPPORT W.A.	3
11	8500-215	LOWER SUPPORT W.A.	2
12	8500-220	MAIN 12FT SECTION W.A.	1
13	8500-221	HEADER REST 38FT CART W.A.	2
14	8500-338	TIRE AND WHEEL ASSEMBLY	6
15	8500-397	END CAP, HEADER REST	2

PART IDENTIFICATION

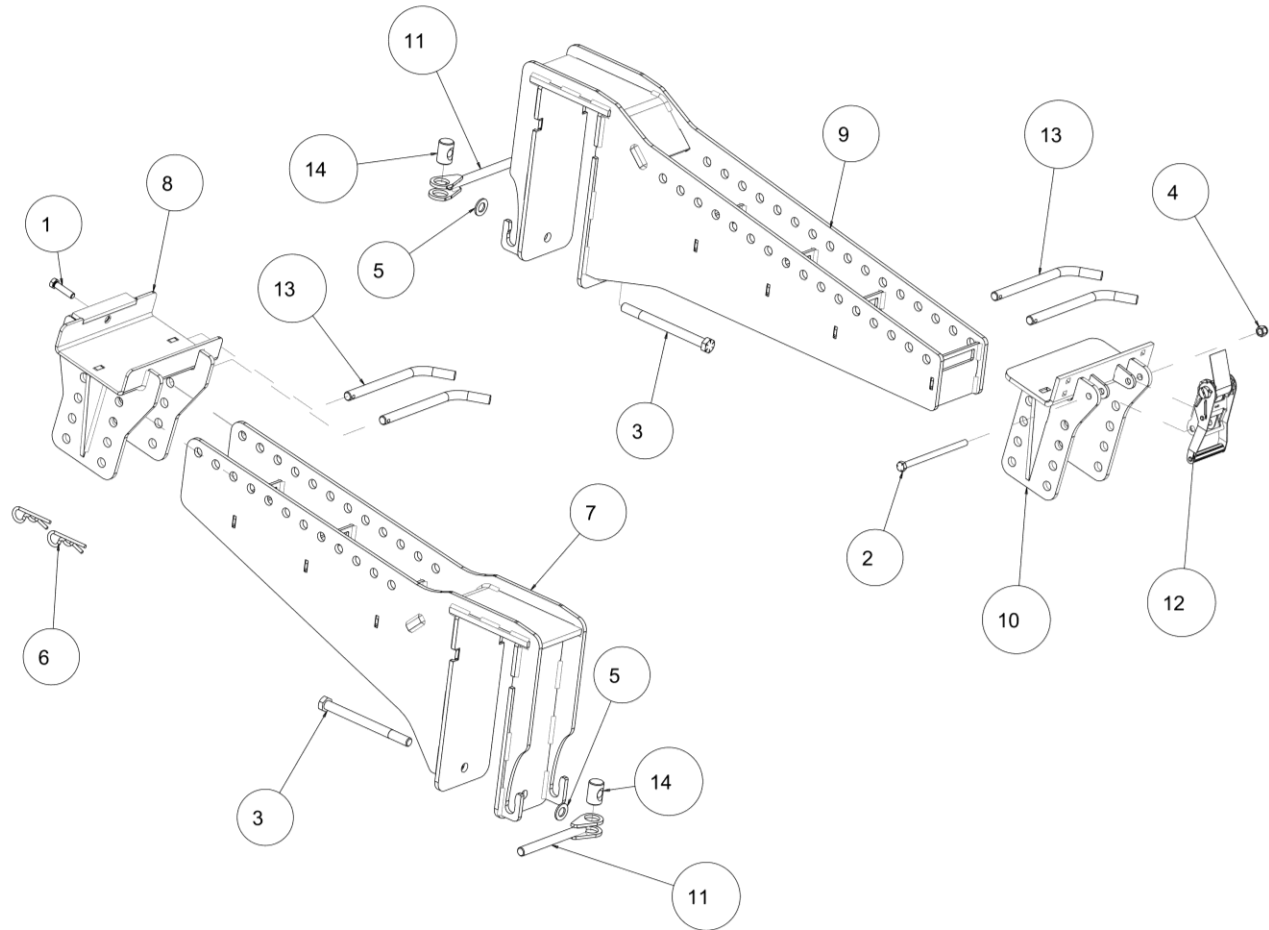
8500-038 – 38' Head Cart



ITEM	PART #		DESCRIPTION	QTY
1	2000-157	75-8 HUB ASSEMBLY		1
2	2502-244	3/8-16 X 1-1/4 HHCS GR 5 ZP		8
3	2502-425	3/4-10 X 5 HHFS GR8, ZP		1
4	2513-509	5/16-18X3/4TYP 23HHSTWHS ZP		1
5	2515-556	ZIP TIE		4
6	2520-255	3/8-16 LOCK HEX NUT ZP		8
7	2520-370	WHEEL NUT #N913557		8
8	2520-516	3/4-10 NYLON INSERT LCKNT, GR 2, ZP		1
9	2520-563	1-8 NYLON LOCK NUT GR C, ZP		1
10	2520-600	3/8-24 UNF 2B HEX TOP LOCK NUT, GRADE C		6
11	2526-251	3/8 STANDARD FLATWASHER ZP		16
12	2526-542	1" SAE FLAT WASHER ZP		2
13	8500-100	EXTENDABLE TONGUE ASSEMBLY		1
14	8500-200	GOOSENECK W.A.		1
15	8500-203	6500LB AXLE W.A.		1
16	8500-335	BUSHING		2
17	8500-336	FRONT FENDER MOUNT		2
18	8500-337-D	VG09 JONESCO FENDER, DRILLED		2
19	8500-338	TIRE AND WHEEL ASSEMBLY		6
20	8500-370	AMBER MARKER LIGHT		4
21	8500-384	CLAMP PLATE, INNER FENDER		4
22	8500-387	GROMMET, MARKER		6
23	19H3534	1-8 X 7-1/2 HHCS GR 8 ZP		1

PART IDENTIFICATION

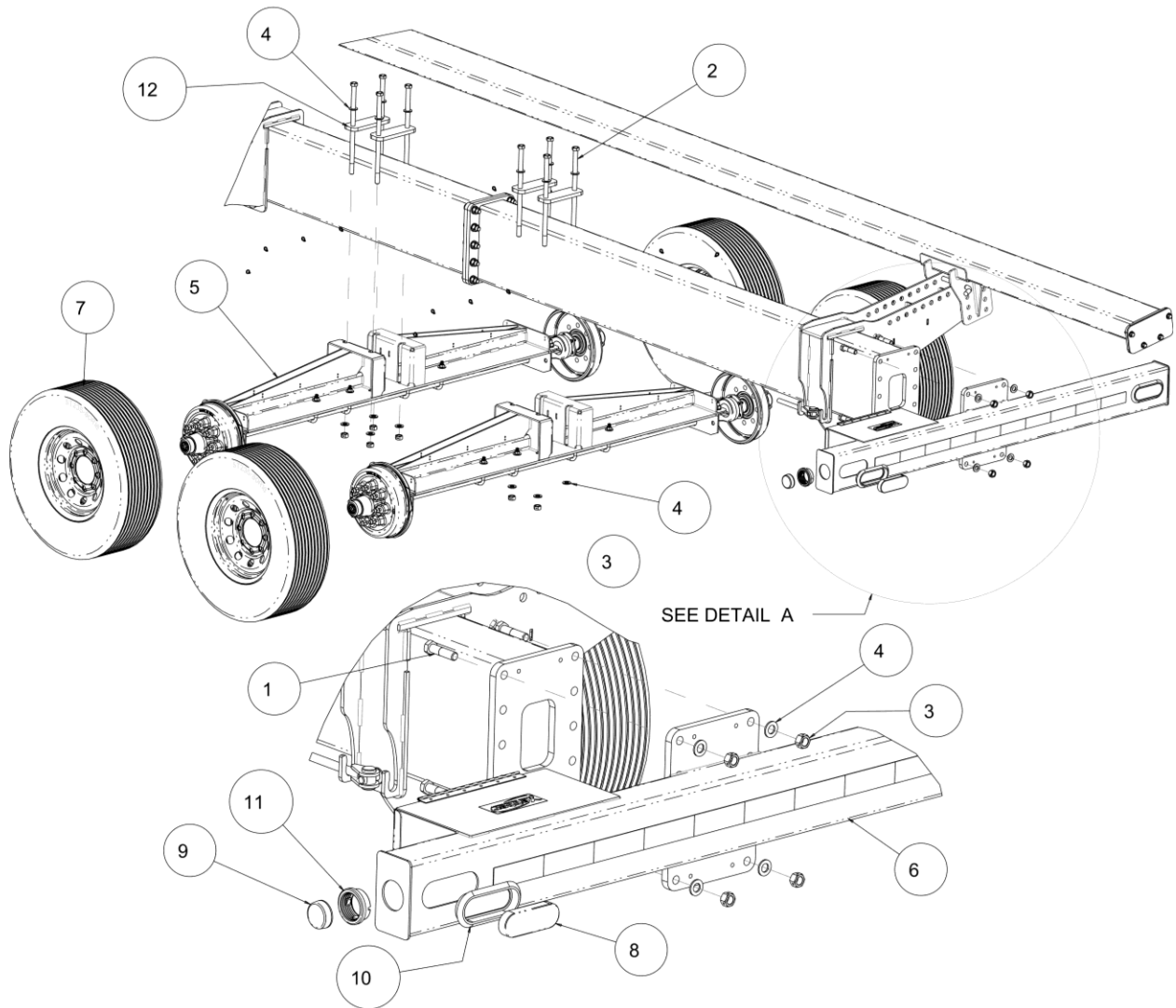
8500-038 – 38' Head Cart



ITEM	PART #	DESCRIPTION	QTY
1	2502-350	1/2-13 X 2 HHCS, GR 8, ZP	4
2	2502-369	1/2-13 X 8 HHCS GR. 5 ZP	2
3	2502-431	3/4-10 X 9 HHCS GR8, ZP	5
4	2520-363	1/2-13 NYL INSERT LOCKNUT, GR 2	2
5	2526-504	3/4 SAE FLATWASHER, ZP	89
6	2570-452	COTTER PIN, 1/4 X 4 STEEL ZP	10
7	8500-212	UPPER SUPPORT W.A.	4
8	8500-213	UPPER HEADER SUPPORT W.A.	4
9	8500-215	LOWER SUPPORT W.A.	2
10	8500-216	LOWER HEADER REST W.A.	2
11	8500-217	ADJUSTMENT HANDLE	5
12	8500-376	2" RATCHET	2
13	8500-377	3/4 DIAMETER PULL PIN	12
14	8500-378	THREADED PIN	5

PART IDENTIFICATION

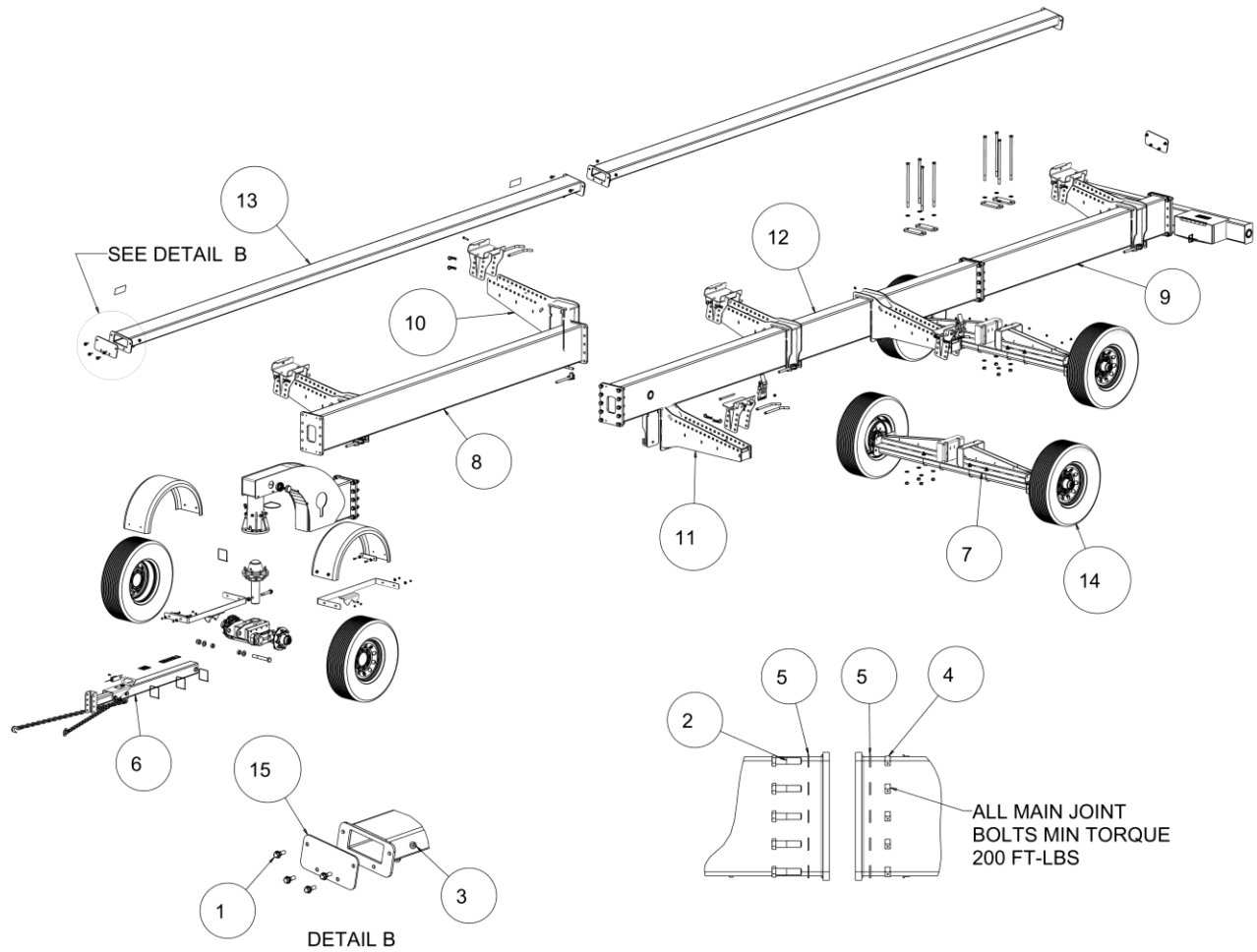
8500-038 – 38' Head Cart



ITEM	PART #	DESCRIPTION	QTY
1	2502-409	3/4-10 X 3 HHCS GR 5 ZP	34
2	2502-429	3/4-10 X 16.5 HHCS GR8, ZP	8
3	2520-518	3/4-10 LOCK HEX NUT, GR 8, ZP	42
4	2526-504	3/4 SAE FLATWASHER, ZP	90
5	8500-101	REAR AXLE ASSEMBLY	2
6	8500-102	TAIL LIGHTS ASSEMBLY	1
7	8500-338	TIRE AND WHEEL ASSEMBLY	6
8	8500-371	LED TAIL LIGHT	2
9	8500-372	RED MARKER LIGHT	2
10	8500-386	6.5 X 2.25 OVAL GROMMET	2
11	8500-387	GROMMET, MARKER	6
12	8500-388	AXLE CLAMP PLATE	4

PART IDENTIFICATION

8500-043 – 43' Head Cart



ITEM	PART #	DESCRIPTION	QTY
1	2502-307	1/2-13 X 1-1/2 FLANGE SERRATED HEX BOLT PLATED GR 5	12
2	2502-409	3/4-10 X 3 HHCS GR 5 ZP	34
3	2520-361	1/2-13FLANGE WHZLCK HXNT, GR 5, ZP	12
4	2520-518	3/4-10 LOCK HEX NUT, GR 8, ZP	42
5	2526-504	3/4 SAE FLATWASHER, ZP	90
6	8500-100	EXTENDABLE TONGUE ASSEMBLY	1
7	8500-101	REAR AXLE ASSEMBLY	2
8	8500-207	MAIN TUBE FRONT SECTION W.A.	1
9	8500-209	TAIL END W.A.	1
10	8500-212	UPPER SUPPORT W.A.	4
11	8500-215	LOWER SUPPORT W.A.	2
12	8500-218	MAIN 17FT SECTION W.A.	1
13	8500-219	HEADER REST 43FT CART W.A.	2
14	8500-338	TIRE AND WHEEL ASSEMBLY	6
15	8500-397	END CAP, HEADER REST	2

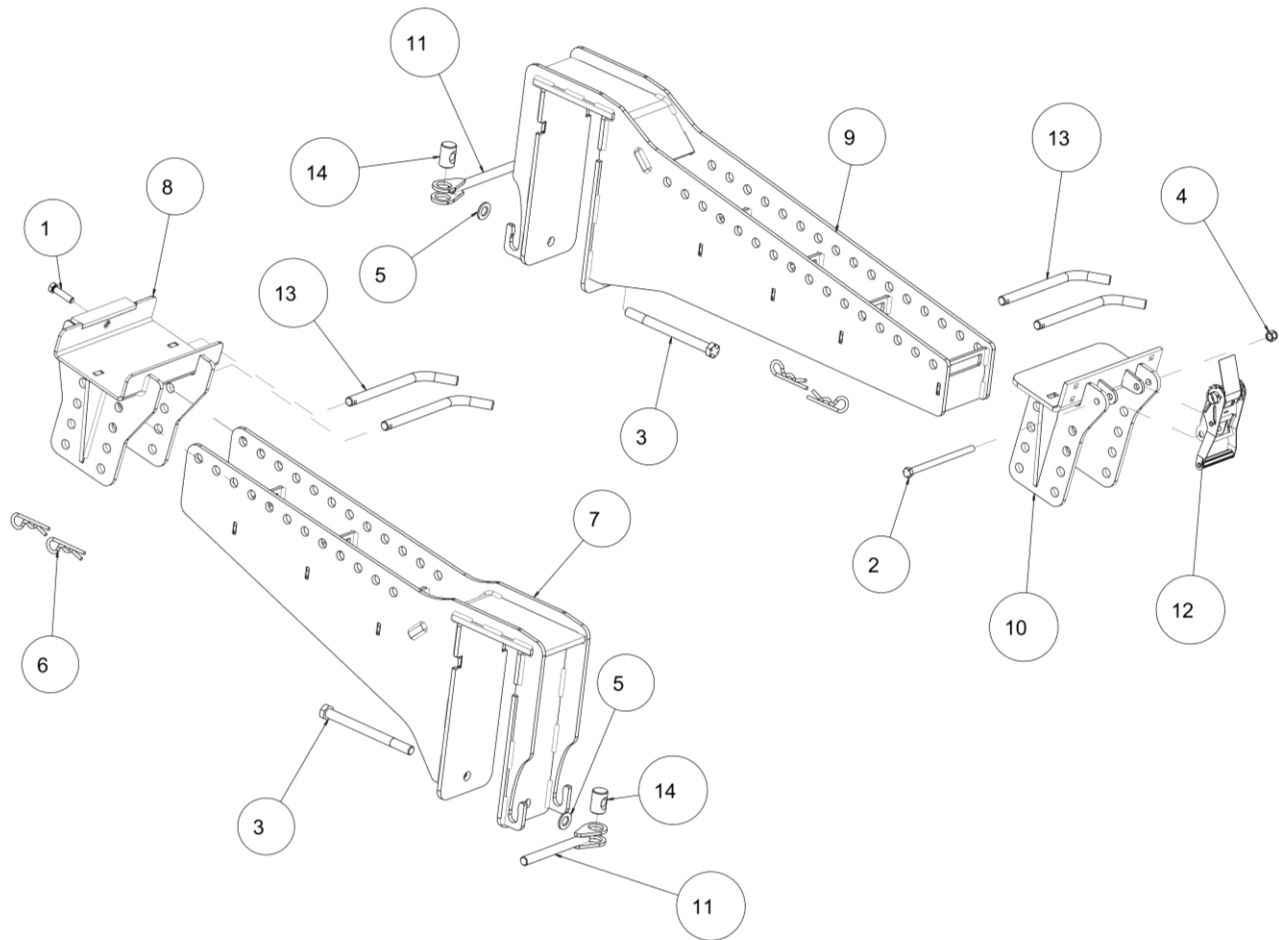
This exploded view diagram illustrates the assembly of a vehicle chassis. The components are numbered 1 through 23. The diagram shows the following parts and their assembly relationships:

- 1**: Central hub and axle assembly.
- 2**: Axle bracket or support plate.
- 3**: Axle pin or bolt.
- 4**: Chain link.
- 5**: Long structural beam or frame member.
- 6**: Small pin or bolt.
- 7**: Wheel fender or arch.
- 8**: Small plate or spacer.
- 9**: Small pin or bolt.
- 10**: Wheel fender or arch.
- 11**: Small pin or bolt.
- 12**: Small pin or bolt.
- 13**: Small plate or spacer.
- 14**: Small pin or bolt.
- 15**: Axle pin or bolt.
- 16**: Small pin or bolt.
- 17**: Axle bracket or support plate.
- 18**: Wheel fender or arch.
- 19**: Tire and wheel assembly.
- 20**: Wheel fender or arch.
- 21**: Small pin or bolt.
- 22**: Small pin or bolt.
- 23**: Axle pin or bolt.

ITEM	PART #	DESCRIPTION	QTY
1	2000-157	75-8 HUB ASSEMBLY	1
2	2502-244	3/8-16 X 1-1/4 HHCS GR 5 ZP	8
3	2502-425	3/4-10 X 5 HHFS GR8, ZP	1
4	2513-509	5/16-18X3/4TYP 23HHSTWHS ZP	1
5	2515-556	ZIP TIE	4
6	2520-255	3/8-16 LOCK HEX NUT ZP	8
7	2520-370	WHEEL NUT #N913557	8
8	2520-516	3/4-10 NYLON INSERT LCKNT, GR 2, ZP	1
9	2520-563	1-8 NYLON LOCK NUT GR C, ZP	1
10	2520-600	3/8-24 UNF 2B HEX TOP LOCK NUT, GRADE C	6
11	2526-251	3/8 STANDARD FLATWASHER ZP	16
12	2526-542	1" SAE FLAT WASHER ZP	2
13	8500-100	EXTENDABLE TONGUE ASSEMBLY	1
14	8500-200	GOOSENECK W.A.	1
15	8500-203	6500LB AXLE W.A.	1
16	8500-335	BUSHING	2
17	8500-336	FRONT FENDER MOUNT	2
18	8500-337-D	VG09 JONESCO FENDER, DRILLED	2
19	8500-338	TIRE AND WHEEL ASSEMBLY	6
20	8500-370	AMBER MARKER LIGHT	4
21	8500-384	CLAMP PLATE, INNER FENDER	4
22	8500-387	GROMMET, MARKER	6
23	19H3534	1-8 X 7-1/2 HHCS GR 8 ZP	1

PART IDENTIFICATION

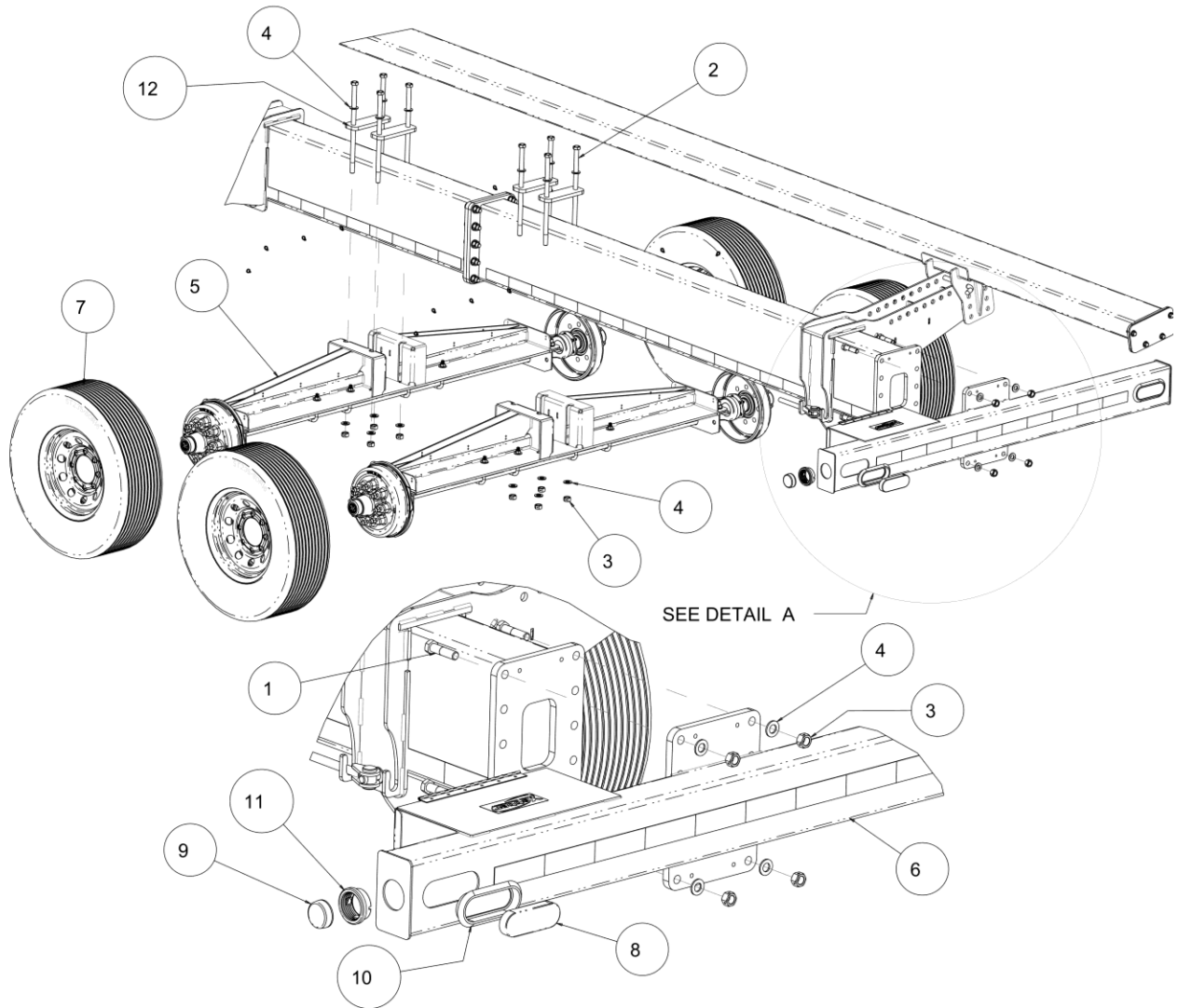
8500-043 – 43' Head Cart



ITEM	PART #		DESCRIPTION	QTY
1	2502-350	1/2-13 X 2 HHCS, GR 8, ZP		4
2	2502-369	1/2-13 X 8 HHCS GR. 5 ZP		2
3	2502-431	3/4-10 X 9 HHCS GR8, ZP		5
4	2520-363	1/2-13 NYL INSERT LOCKNUT, GR 2		2
5	2526-504	3/4 SAE FLATWASHER, ZP		89
6	2570-452	COTTER PIN, 1/4 X 4 STEEL ZP		10
7	8500-212	UPPER SUPPORT W.A.		4
8	8500-213	UPPER HEADER SUPPORT W.A.		4
9	8500-215	LOWER SUPPORT W.A.		2
10	8500-216	LOWER HEADER REST W.A.		2
11	8500-217	ADJUSTMENT HANDLE		5
12	8500-376	2" RATCHET		2
13	8500-377	3/4 DIAMETER PULL PIN		12
14	8500-378	THREADED PIN		5

PART IDENTIFICATION

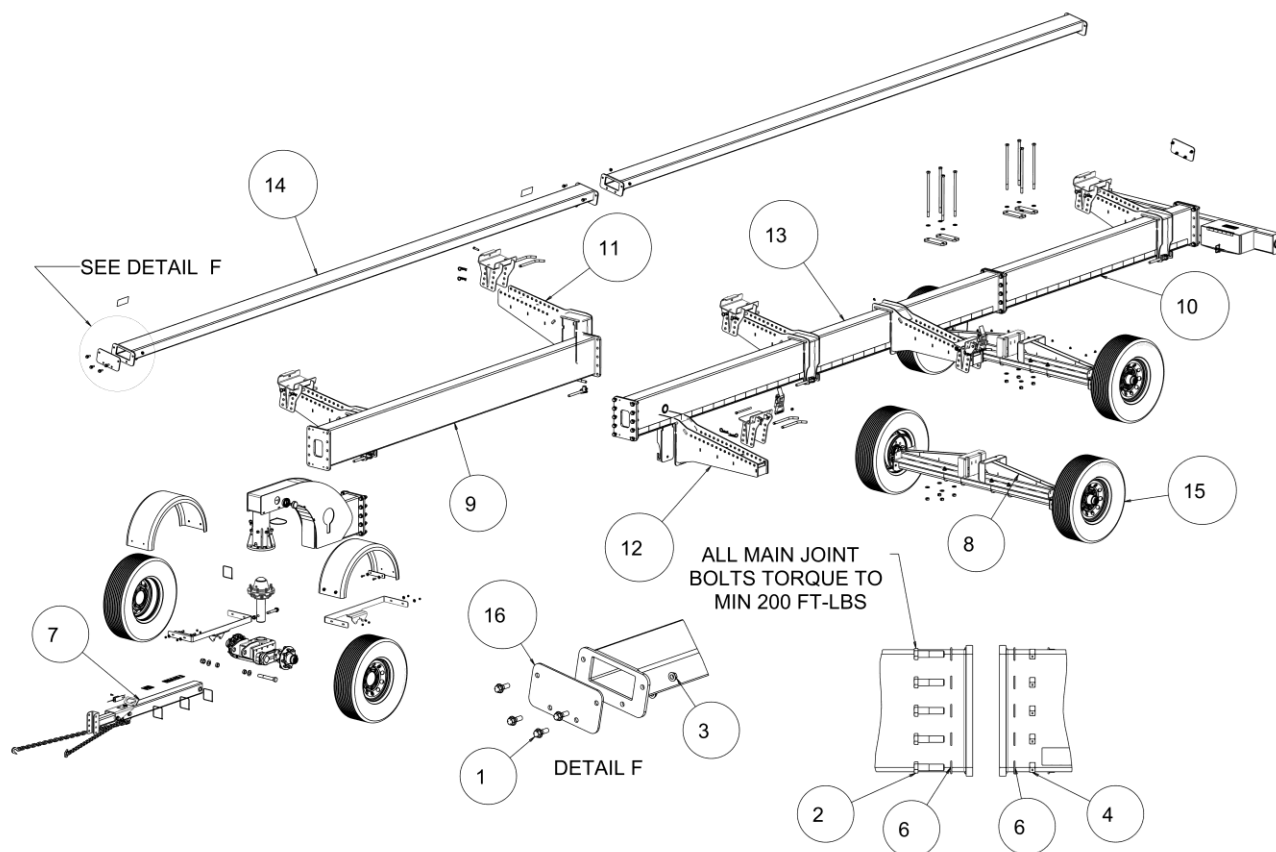
8500-043 – 43' Head Cart



ITEM	PART #	DESCRIPTION	QTY
1	2502-409	3/4-10 X 3 HHCS GR 5 ZP	34
2	2502-429	3/4-10 X 16.5 HHCS GR8, ZP	8
3	2520-518	3/4-10 LOCK HEX NUT, GR 8, ZP	42
4	2526-504	3/4 SAE FLATWASHER, ZP	90
5	8500-101	REAR AXLE ASSEMBLY	2
6	8500-102	TAIL LIGHTS ASSEMBLY	1
7	8500-338	TIRE AND WHEEL ASSEMBLY	6
8	8500-371	LED TAIL LIGHT	2
9	8500-372	RED MARKER LIGHT	2
10	8500-386	6.5 X 2.25 OVAL GROMMET	2
11	8500-387	GROMMET, MARKER	6
12	8500-388	AXLE CLAMP PLATE	4

PART IDENTIFICATION

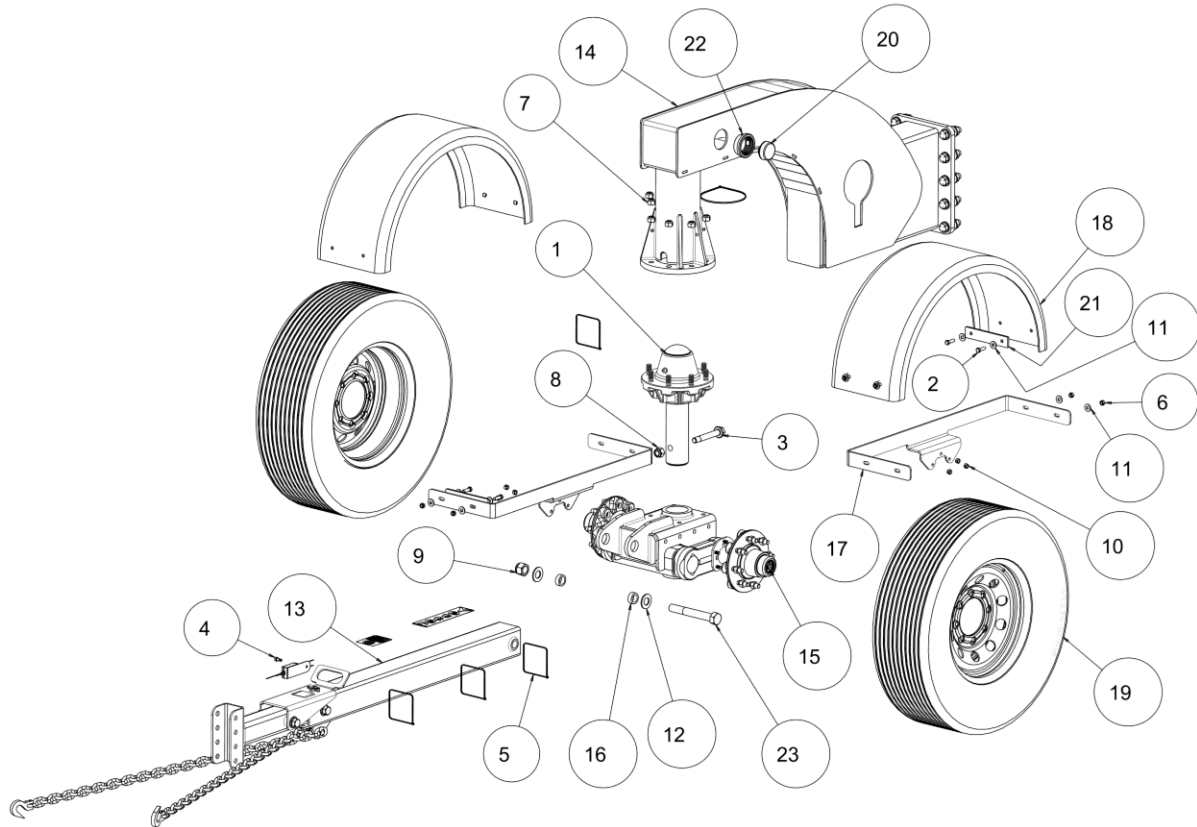
8500-048 – 48' Head Cart



ITEM	PART #	DESCRIPTION	QTY
1	2502-307	1/2-13 X 1-1/2 FLANGE SERRATED HEX BOLT PLATED GR 5	12
2	2502-409	3/4-10 X 3 HHCS GR 5 ZP	34
3	2520-361	1/2-13FLANGE WHZLCK HXNT, GR 5, ZP	12
4	2520-518	3/4-10 LOCK HEX NUT, GR 8, ZP	42
5	2520-563	1-8 NYLON LOCK NUT GR C, ZP	1
6	2526-504	3/4 SAE FLATWASHER, ZP	90
7	8500-100	EXTENDABLE TONGUE ASSEMBLY	1
8	8500-101	REAR AXLE ASSEMBLY	2
9	8500-207	MAIN TUBE FRONT SECTION W.A.	1
10	8500-209	TAIL END W.A.	1
11	8500-212	UPPER SUPPORT W.A.	4
12	8500-215	LOWER SUPPORT W.A.	2
13	8500-218	MAIN 17FT SECTION W.A.	1
14	8500-219	HEADER REST 43FT CART W.A.	2
15	8500-338	TIRE AND WHEEL ASSEMBLY	6
16	8500-397	END CAP, HEADER REST	2

PART IDENTIFICATION

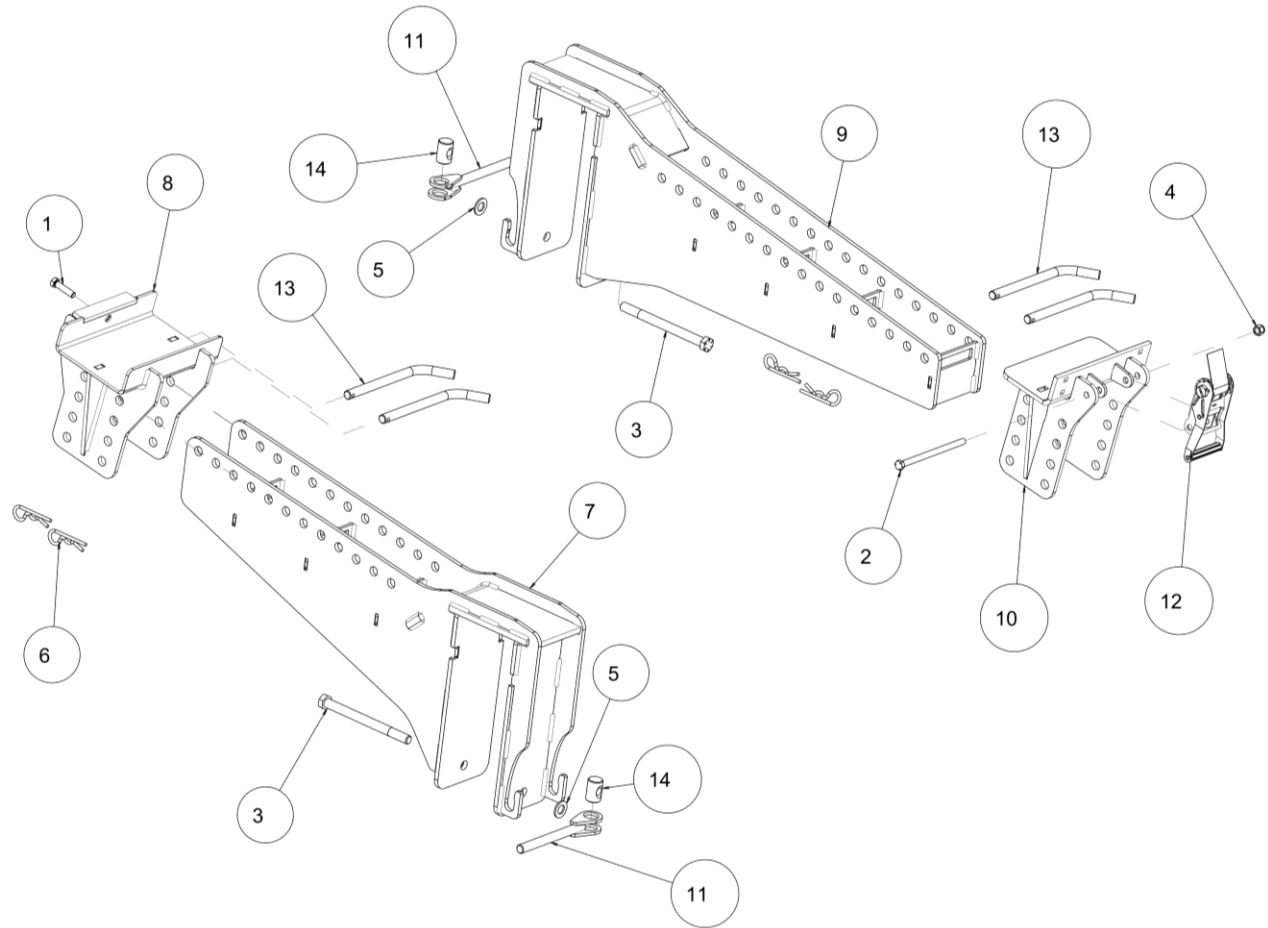
8500-048 – 48' Head Cart



ITEM	PART #		DESCRIPTION	QTY
1	2000-157	75-8 HUB ASSEMBLY		1
2	2502-244	3/8-16 X 1-1/4 HHCS GR 5 ZP		8
3	2502-425	3/4-10 X 5 HHFS GR8, ZP		1
4	2513-509	5/16-18X3/4TYP 23HHSTWHS ZP		1
5	2515-556	ZIP TIE		4
6	2520-255	3/8-16 LOCK HEX NUT ZP		8
7	2520-370	WHEEL NUT #N913557		8
8	2520-516	3/4-10 NYLON INSERT LCKNT, GR 2, ZP		1
9	2520-563	1-8 NYLON LOCK NUT GR C, ZP		1
10	2520-600	3/8-24 UNF 2B HEX TOP LOCK NUT, GRADE C		6
11	2526-251	3/8 STANDARD FLATWASHER ZP		16
12	2526-542	1" SAE FLAT WASHER ZP		2
13	8500-100	EXTENDABLE TONGUE ASSEMBLY		1
14	8500-200	GOOSENECK W.A.		1
15	8500-203	6500LB AXLE W.A.		1
16	8500-335	BUSHING		2
17	8500-336	FRONT FENDER MOUNT		2
18	8500-337-D	VG09 JONESCO FENDER, DRILLED		2
19	8500-338	TIRE AND WHEEL ASSEMBLY		6
20	8500-370	AMBER MARKER LIGHT		4
21	8500-384	CLAMP PLATE, INNER FENDER		4
22	8500-387	GROMMET, MARKER		6
23	19H3534	1-8 X 7-1/2 HHCS GR 8 ZP		1

PART IDENTIFICATION

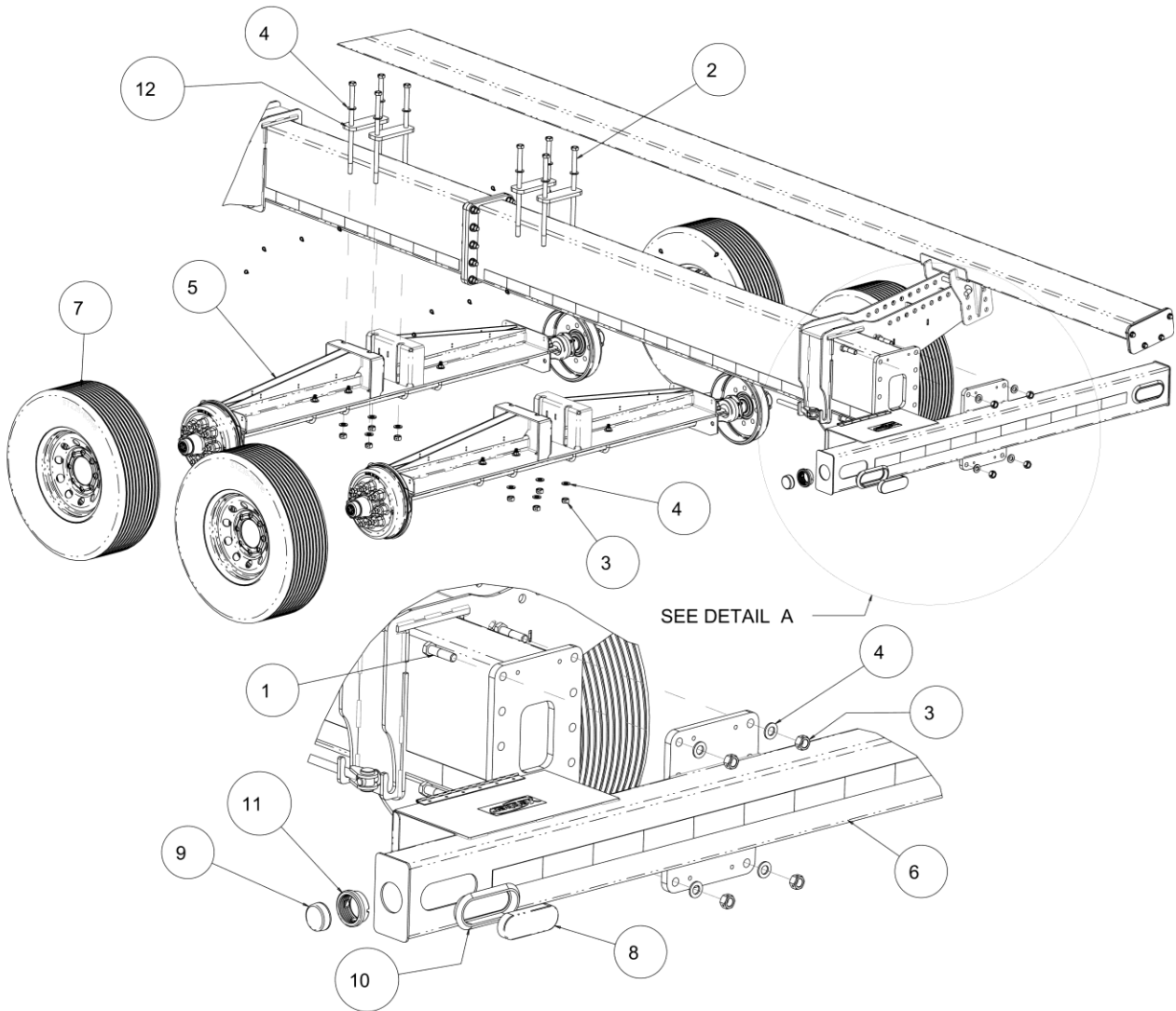
8500-048 – 48' Head Cart



ITEM	PART #	DESCRIPTION	QTY
1	2502-350	1/2-13 X 2 HHCS, GR 8, ZP	4
2	2502-369	1/2-13 X 8 HHCS GR. 5 ZP	2
3	2502-431	3/4-10 X 9 HHCS GR8, ZP	5
4	2520-363	1/2-13 NYL INSERT LOCKNUT, GR 2	2
5	2526-504	3/4 SAE FLATWASHER, ZP	89
6	2570-452	COTTER PIN, 1/4 X 4 STEEL ZP	10
7	8500-212	UPPER SUPPORT W.A.	4
8	8500-213	UPPER HEADER SUPPORT W.A.	4
9	8500-215	LOWER SUPPORT W.A.	2
10	8500-216	LOWER HEADER REST W.A.	2
11	8500-217	ADJUSTMENT HANDLE	5
12	8500-376	2" RATCHET	2
13	8500-377	3/4 DIAMETER PULL PIN	12
14	8500-378	THREADED PIN	5

PART IDENTIFICATION

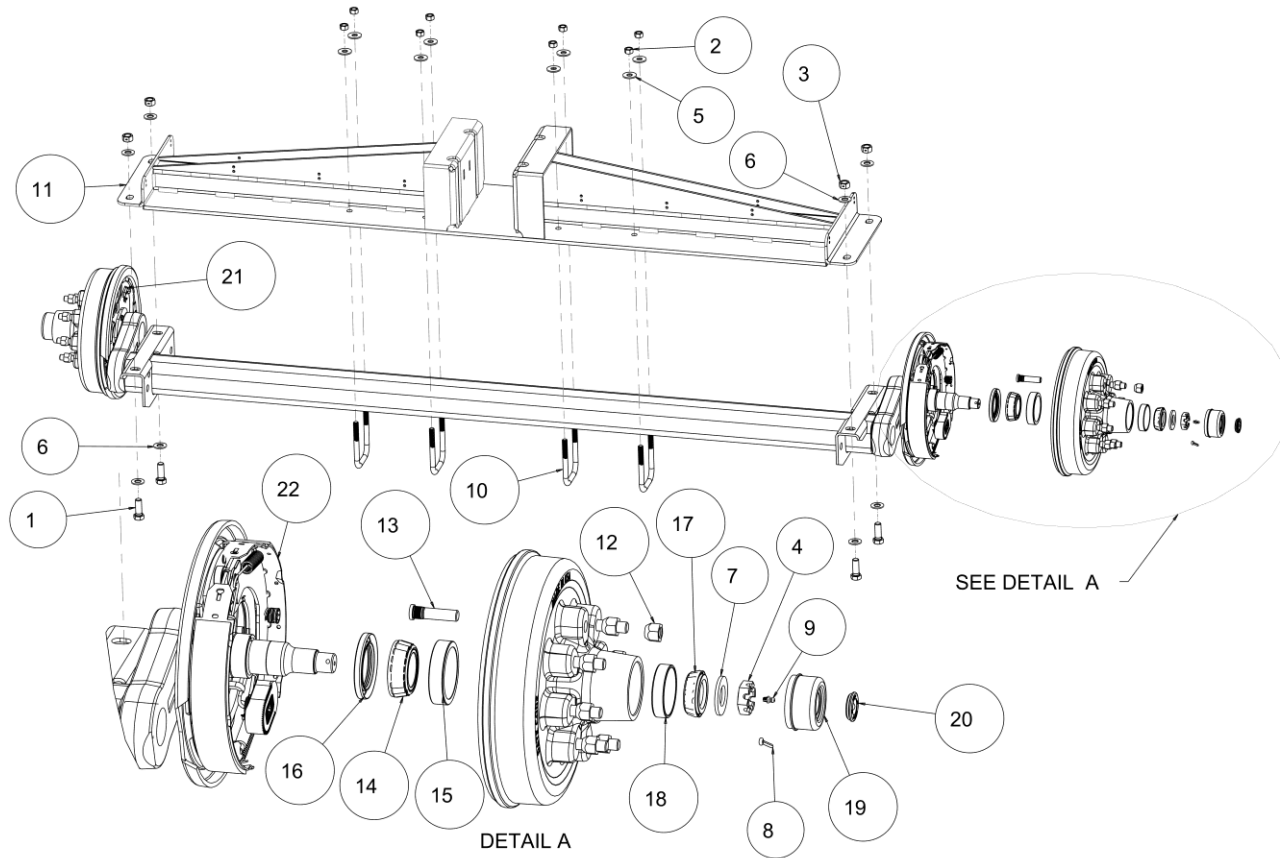
8500-048 – 48' Head Cart



ITEM	PART #	DESCRIPTION	QTY
1	2502-409	3/4-10 X 3 HHCS GR 5 ZP	34
2	2502-429	3/4-10 X 16.5 HHCS GR8, ZP	8
3	2520-518	3/4-10 LOCK HEX NUT, GR 8, ZP	42
4	2526-504	3/4 SAE FLATWASHER, ZP	90
5	8500-101	REAR AXLE ASSEMBLY	2
6	8500-102	TAIL LIGHTS ASSEMBLY	1
7	8500-338	TIRE AND WHEEL ASSEMBLY	6
8	8500-371	LED TAIL LIGHT	2
9	8500-372	RED MARKER LIGHT	2
10	8500-386	6.5 X 2.25 OVAL GROMMET	2
11	8500-387	GROMMET, MARKER	6
12	8500-388	AXLE CLAMP PLATE	4

PART IDENTIFICATION

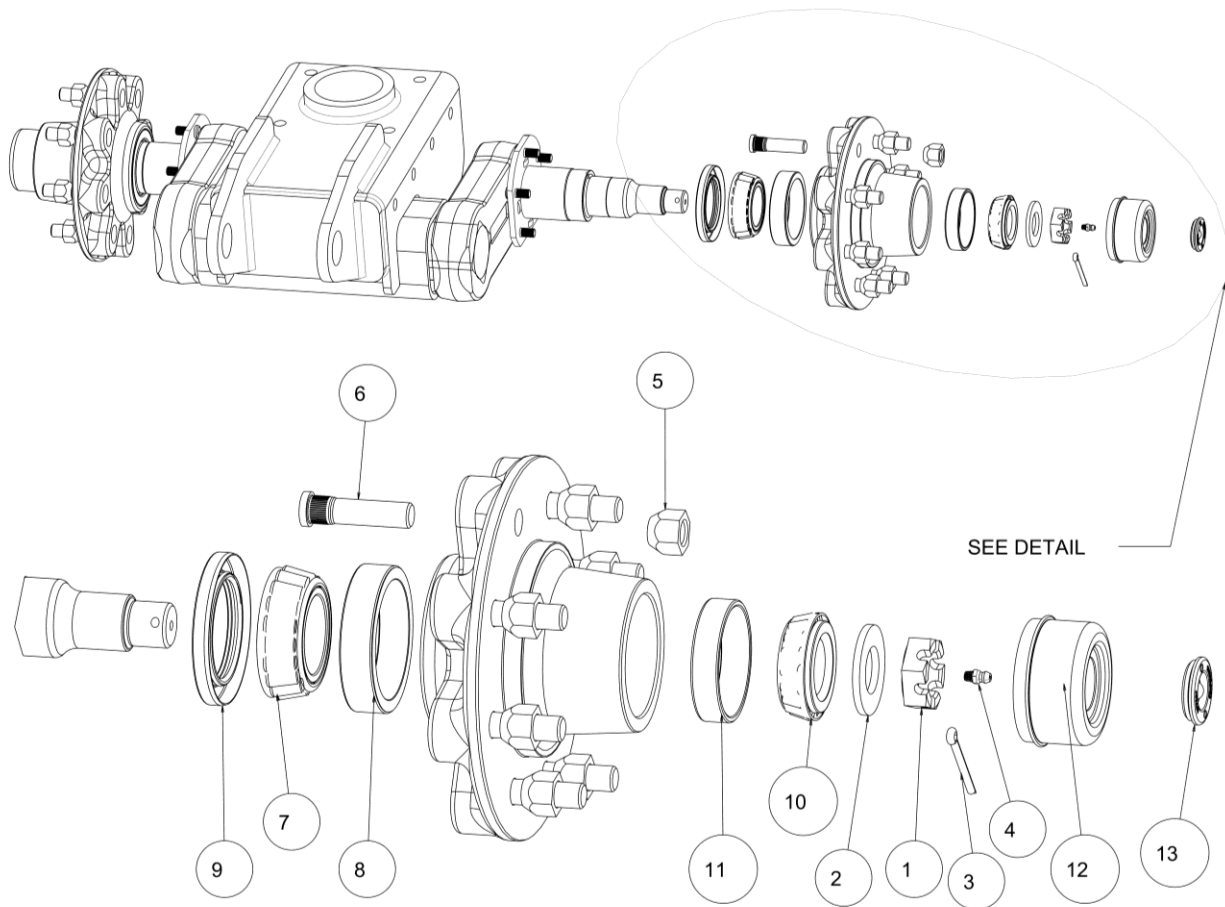
8500-101 – Rear Axle Assembly



ITEM	PART #	DESCRIPTION	QTY
1	2502-331	5/8-11 X 1-3/4 HHCS GR5 ZP	4
2	2520-352	1/2-13 HEX NUT ZP	8
3	2520-459	5/8-11 LOCK HEX NUT, GR B, ZP	4
4	2520-569	NUT, 1-14 CASTLE	2
5	2526-351	1/2 STANDARD FLATWASHER ZP	8
6	2526-453	5/8 SAE FLATWASHER ZP	8
7	2526-545	SPINDLE WASHER - HEADCART	2
8	2531-124	COTTER PINS	2
9	2533-110	1/4-28 ZERK STRAIGHT SELF-TAP	2
10	2570-486	1/2-13 X 5 X 4 U-BOLT	4
11	8500-210	AXLE MOUNT W.A.	1
12	8500-510	9/16-18 LUG NUT, 60 DEGREE	16
13	8500-511	9/16 STUD	16
14	8500-513	INNER TAPERED ROLLER BEARING	2
15	8500-514	INNER BEARING RACE	2
16	8500-515	GREASE SEAL, DOUBLE LIP	2
17	8500-516	OUTER TAPERED ROLLER BEARING	2
18	8500-517	OUTER BEARING RACE	2
19	8500-519	DUST CAP	2
20	8500-520	RUBBER PLUG	2
21	8500-528	SELF ADJ. BRAKE ASSY LH	1
22	8500-529	SELF ADJ BRAKE ASSY RH	1

PART IDENTIFICATION

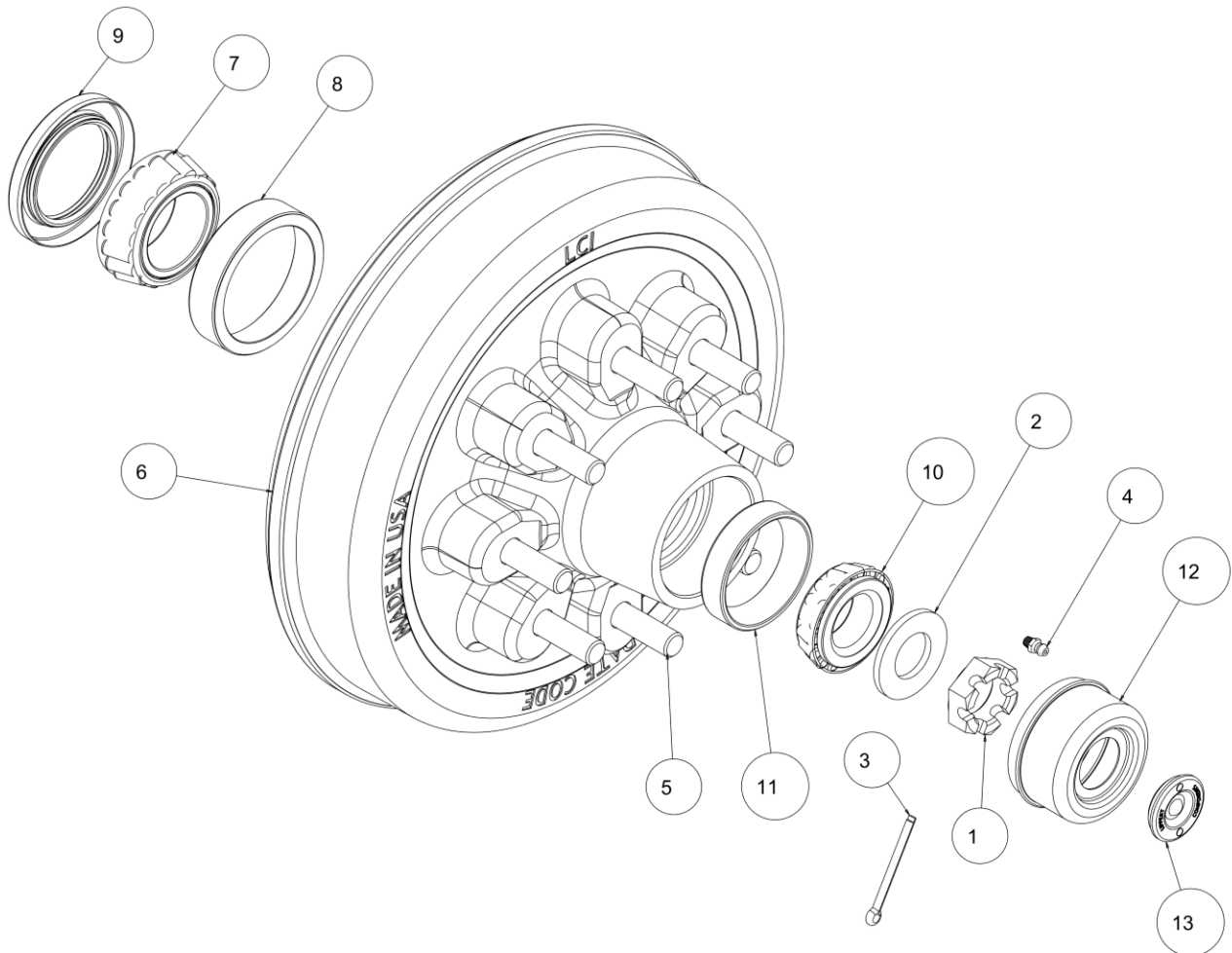
8500-203 – Front Axle Assembly



ITEM	PART #		DESCRIPTION	QTY
1	2520-569	NUT, 1-14 CASTLE		2
2	2526-545	SPINDLE WASHER - HEADCART		2
3	2531-124	COTTER PINS		2
4	2533-110	1/4-28 ZERK STRAIGHT SELF-TAP		2
5	8500-510	9/16-18 LUG NUT, 60 DEGREE		16
6	8500-511	9/16 STUD		16
7	8500-513	INNER TAPERED ROLLER BEARING		2
8	8500-514	INNER BEARING RACE		2
9	8500-515	GREASE SEAL, DOUBLE LIP		2
10	8500-516	OUTER TAPERED ROLLER BEARING		2
11	8500-517	OUTER BEARING RACE		2
12	8500-519	DUST CAP		2
13	8500-520	RUBBER PLUG		2

PART IDENTIFICATION

8500-120 – Rear Bearing and Drum Replacement Kit One per Wheel

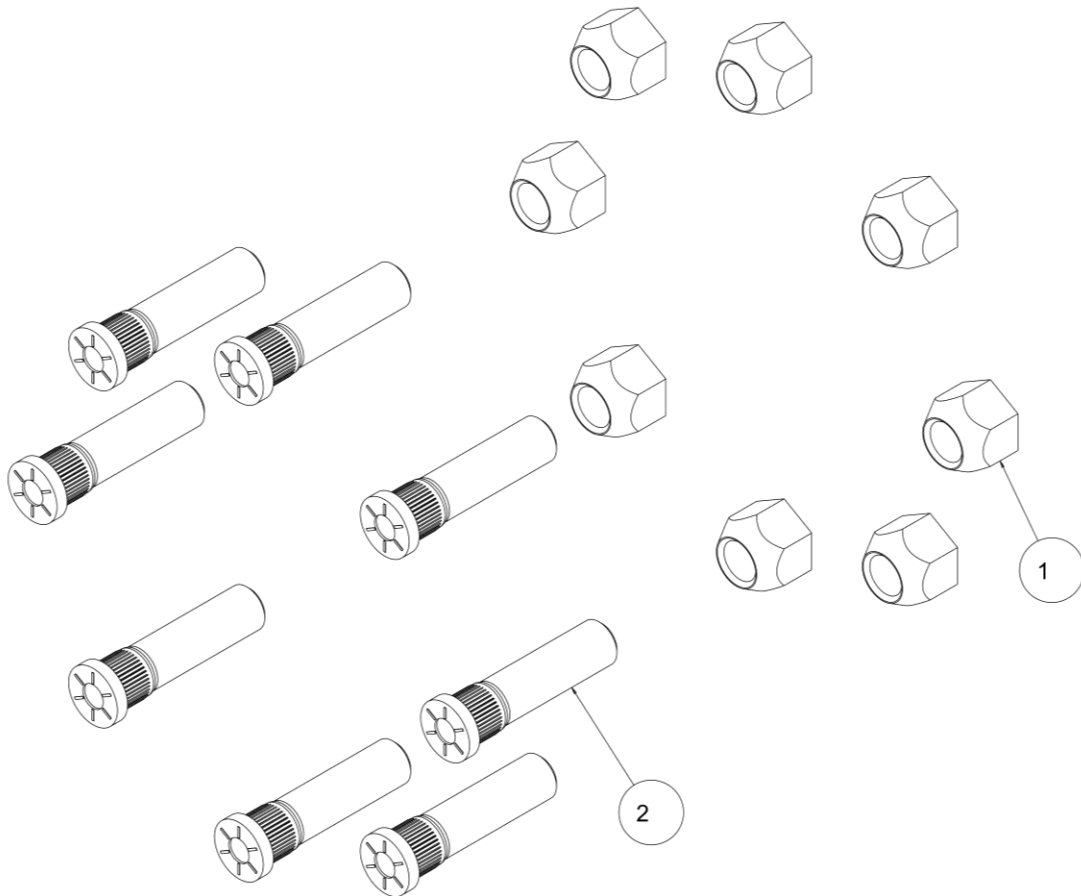


ITEM	PART #	DESCRIPTION	QTY
1	2520-569	NUT, 1-14 CASTLE	1
2	2526-545	SPINDLE WASHER - HEADCART	1
3	2531-124	COTTER PINS	1
4	2533-110	1/4-28 ZERK STRAIGHT SELF-TAP	1
5	8500-511	9/16 STUD	8
6	8500-512	BRAKE DRUM	1
7	8500-513	INNER TAPERED ROLLER BEARING	1
8	8500-514	INNER BEARING RACE	1
9	8500-515	GREASE SEAL, DOUBLE LIP	1
10	8500-516	OUTER TAPERED ROLLER BEARING	1
11	8500-517	OUTER BEARING RACE	1
12	8500-519	DUST CAP	1
13	8500-520	RUBBER PLUG	1

PART IDENTIFICATION

8500-121 – Lugnut and Stud Replacement Kit

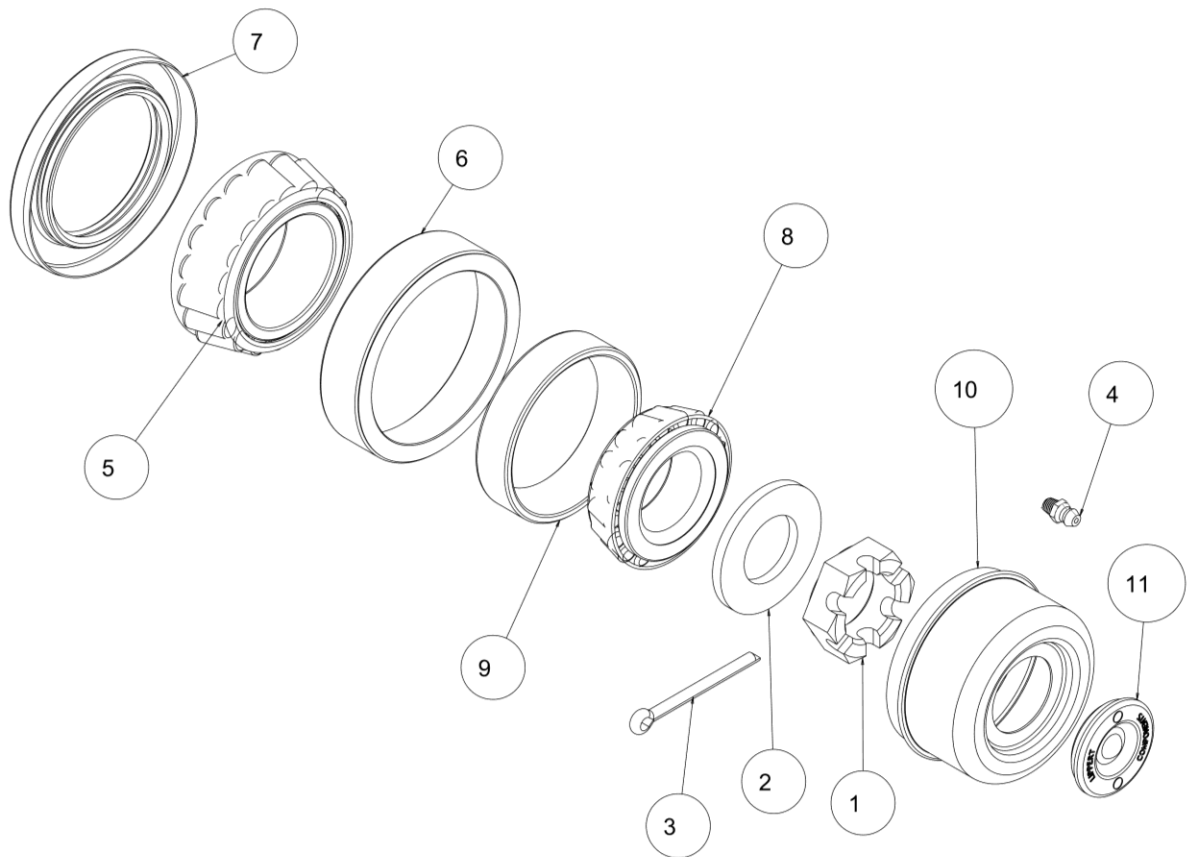
One per Wheel



ITEM	PART #		DESCRIPTION	QTY
1	8500-510	9/16-18 LUG NUT, 60 DEGREE		8
2	8500-511	9/16 STUD		8

PART IDENTIFICATION

8500-122 – Front and Rear Bearing Replacement Kit One per Wheel

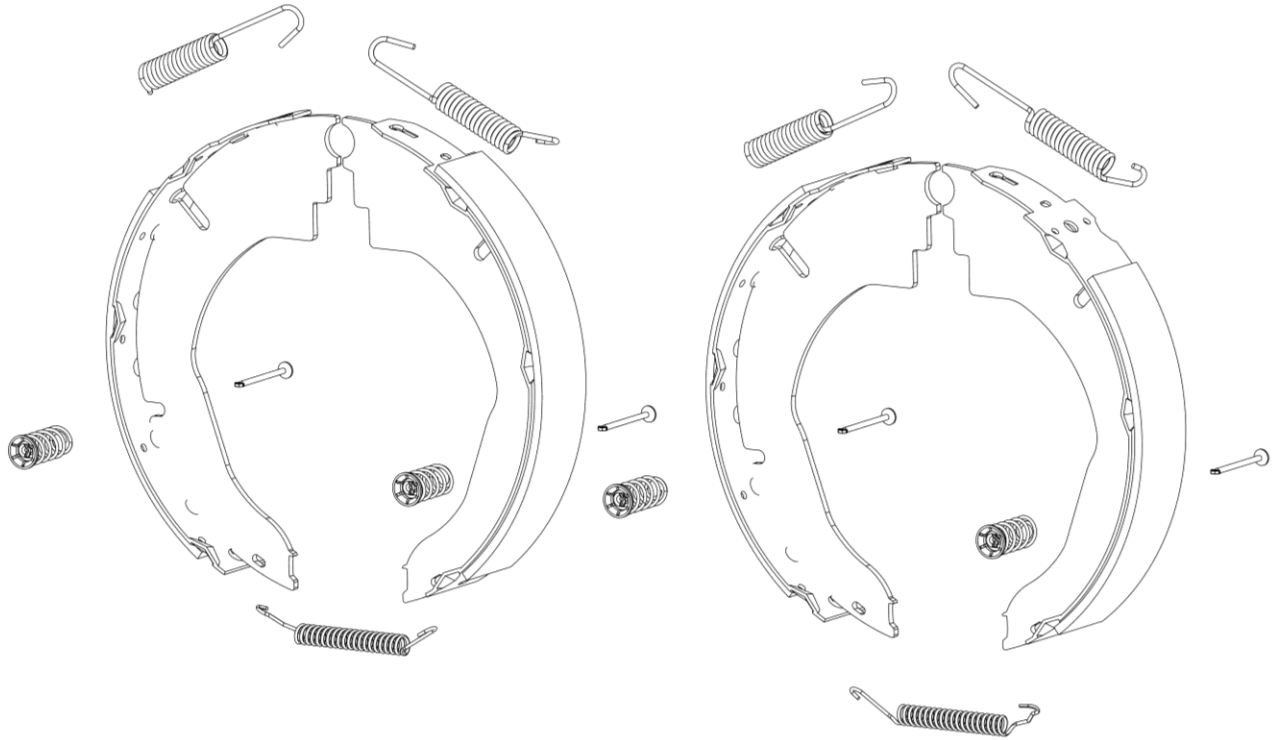


ITEM	PART #		DESCRIPTION	QTY
1	2520-569		NUT, 1-14 CASTLE	1
2	2526-545		SPINDLE WASHER - HEADCART	1
3	2531-124		COTTER PINS	1
4	2533-110		1/4-28 ZERK STRAIGHT SELF-TAP	1
5	8500-513		INNER TAPERED ROLLER BEARING	1
6	8500-514		INNER BEARING RACE	1
7	8500-515		GREASE SEAL, DOUBLE LIP	1
8	8500-516		OUTER TAPERED ROLLER BEARING	1
9	8500-517		OUTER BEARING RACE	1
10	8500-519		DUST CAP	1
11	8500-520		RUBBER PLUG	1

PART IDENTIFICATION

8500-123 – Brake Replacement Kit

One per Axle

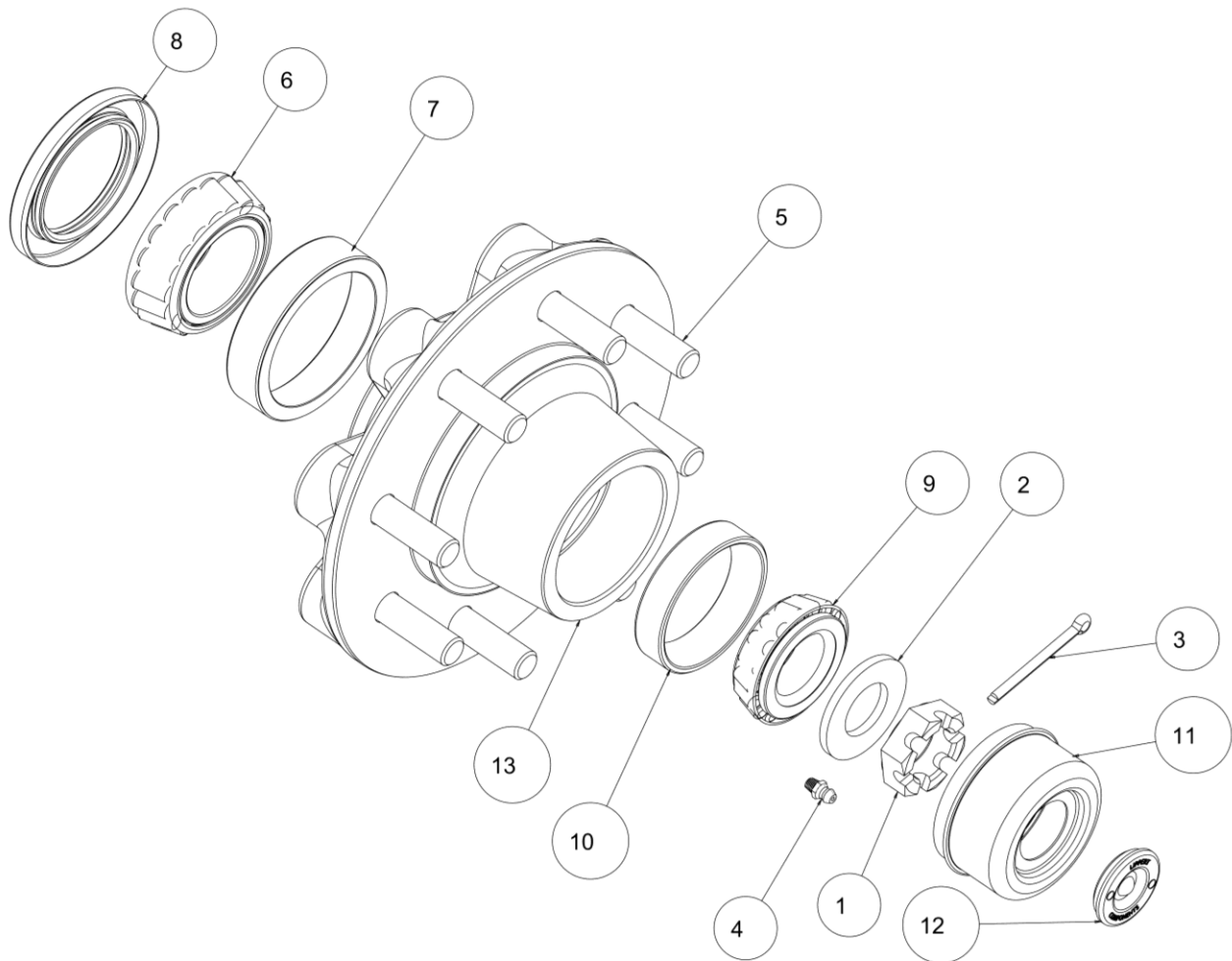


KIT INCLUDES 2 SETS OF BRAKE SHOES, ALL SPRINGS, AND MOUNTING CLIPS

PART IDENTIFICATION

8500-124 – Front Bearing Replacement Kit

One per Wheel



ITEM	PART #	DESCRIPTION	QTY
1	2520-569	NUT, 1-14 CASTLE	1
2	2526-545	SPINDLE WASHER - HEADCART	1
3	2531-124	COTTER PINS	1
4	2533-110	1/4-28 ZERK STRAIGHT SELF-TAP	1
5	8500-511	9/16 STUD	8
6	8500-513	INNER TAPERED ROLLER BEARING	1
7	8500-514	INNER BEARING RACE	1
8	8500-515	GREASE SEAL, DOUBLE LIP	1
9	8500-516	OUTER TAPERED ROLLER BEARING	1
10	8500-517	OUTER BEARING RACE	1
11	8500-519	DUST CAP	1
12	8500-520	RUBBER PLUG	1
13	8500-526	FRONT HUB	1





Our Name Is Getting Known

Just a few years ago, Yetter products were sold primarily to the Midwest only. Then we embarked on a program of expansion and moved into the East, the South, the West and now north into Canada. We're even getting orders from as far away as Australia and Africa.

So, when you buy Yetter products . . .you're buying a name that's recognized. A name that's known and respected. A name that's become a part of American agriculture and has become synonymous with quality and satisfaction in the field of conservation tillage.

From all of us here at Yetter,
Thank you.

Yetter Manufacturing Co,
Colchester, IL 62326
(309)776-4111
Website: www.yetterco.com
E-Mail: info@yetterco.com