



**5000 SERIES
STALK
DEVASTATOR
CORN STALK ROLLER
*PATENTED***

**5000-029A, 5000-030A, 5000-032A
CASE IH 4400 6, 8, & 12 ROW MODELS
OPERATOR'S MANUAL
PART IDENTIFICATION
2565-792_RevA – 02/2017**



YETTER MANUFACTURING CO.
Founded 1930

Colchester, IL 62326
Toll Free: (800)447-5777
Fax: (309)776-3222
Website: yetterco.com
E-mail: info@yetterco.com

YETTER

TABLE OF CONTENTS

INTRODUCTION.....	3
WARRANTY	3
SAFETY INFORMATION.....	4-6
TORQUE.....	7
PART IDENTIFICATION.....	8-16
5000-029A.....	8-10
5000-030A.....	11-13
5000-032A.....	14-16
ASSEMBLY INSTRUCTIONS	17-22
LOCK UP PIN	23

FOREWORD

You've just joined an exclusive but rapidly growing club.

For our part, we want to welcome you to the group and thank you for buying a Yetter product.

We hope your new Yetter products will help you achieve both goals-increase your productivity and increase your efficiency so that you may generate more profit.

This operator's manual has been designed into four major sections: Foreword, Safety Precautions, Installation Instructions and Parts Breakdown.



This **SAFETY ALERT SYMBOL** indicates important safety messages in the manual. When you see this symbol, be alert to the possibility of **PERSONAL INJURY** and carefully read the message that follows.

The word **NOTE** is used to convey information that is out of context with the manual text. It contains special information such as specifications, techniques and reference information of a supplementary nature.

The word **IMPORTANT** is used in the text when immediate damage will occur to the machine due

to improper technique or operation. Important will apply to the same information as specified by note only of an immediate and urgent nature.

It is the responsibility of the user to read the operator's manual and comply with the safe and correct operating procedure and to lubricate and maintain the product according to the maintenance schedule in the operator's manual.

The user is responsible for inspecting his machine and for having parts repaired or replaced when continued use of the product would cause damage or excessive wear to the other parts.

It is the user's responsibility to deliver his machine to the Yetter dealer who sold him the product for service or replacement of defective parts, which are covered by the warranty policy.

If you are unable to understand or follow the instructions provided in this publication, consult your local Yetter dealer or contact:

YETTER MANUFACTURING CO.

309/776-4111

800/447-5777

309/776-3222 (FAX)

Website: www.yetterco.com

E-mail: info@yetterco.com

WARRANTY

Yetter Manufacturing warrants all products manufactured and sold by it against defects in material. This warranty being expressly limited to replacement at the factory of such parts or products as shall appear to be defective after inspection. This warranty does not obligate the Company to bear cost of labor in replacement of parts. It is the policy of the Company to make improvements without incurring obligations to add them to any unit already sold. No warranty is made or authorized to be made, other than herein set forth. This warranty is in effect for one year after purchase.

DEALER: _____

Yetter Manufacturing warrants its own products only and cannot be responsible for damages to equipment on which mounted.

BE ALERT!

YOUR SAFETY IS INVOLVED.



WATCH FOR THIS SYMBOL. IT POINTS OUT IMPORTANT SAFETY PRECAUTIONS. IT MEANS: “ATTENTION---BECOME ALERT!”

It is your responsibility as an owner, operator, or supervision to know and instruct everyone using this machine at the time of initial assignment and at least annually thereafter, of the proper operation, precautions, and work hazards which exist in the operation of the machine in accordance with OSHA regulations.

Safety Is No Accident

The following safety instructions, combined with common sense, will save your equipment from needless damage and the operator from unnecessary exposure to personal hazard. Pay special attention to the caution notes in the text. Review this manual at least once a year with all operators.



1. Read and understand the operator's manual before operating this machine. Failure to do so is considered a misuse of the equipment.
2. Make sure equipment is secure before operating.
3. Always keep children away from equipment when operating.
4. Make sure everyone that is not directly involved with the operation is out of the work area before beginning operation.
5. Make sure all safety devices, shields, and guards are in place and functional before beginning operation
6. Shut off all power to adjust, service, or clean.
7. Keep hands, feet, and clothing away from moving parts. It is a good idea to remove all jewelry before operating.
8. Inspect the machine periodically during operation for signs of excessive wear, loose fasteners, and unusual noises.

PLEASE READ, VERY IMPORTANT



**SECURE CORN HEADER AGAINST
UNWANTED LOWERING BY APPLYING THE
LOCKING MECHANISM ON THE HYDRAULIC
CYLINDERS!**

- 1. Attach head to combine, lock head to combine**
- 2. Raise the head off the ground and engage safety stop on the feeder house cylinder**
- 3. Turn off the combine engine and remove the key**

**FOLLOW ALL INSTRUCTIONS GIVEN BY THE
COMBINE MANUFACTURER**

PLEASE READ, VERY IMPORTANT



Subject to the size and weight of the corn header, one or two additional hydraulic cylinders may be required.

The combine manufacturer generally keeps corresponding kits readily available for dealers.

Subject to the design of the corn header and the carry capacity of different combines, the steering axel may require the fitting of additional weights and the rear tires be filled with ballast.

**FOLLOW ALL INSTRUCTIONS GIVEN BY THE
COMBINE MANUFACTURER**

BOLT TORQUE



Important: Over tightening hardware can cause as much damage as when under tightening. Tightening hardware beyond the recommended range can reduce its shock load capacity.

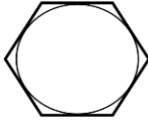


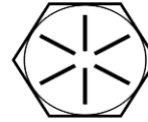
All hardware on the 5000 Devastator is either Grade 5 or Grade 8, unless otherwise noted. Grade 5 cap screws are marked with three radial lines on the head. Grade 8 cap screws are marked with six radial lines on the head. If hardware must be replaced, be sure to replace it with hardware of equal size, strength, and thread type. Refer to the torque values chart when tightening hardware.

The chart below is a guide for proper torque. Use it unless a specified torque is called out elsewhere in the manual.

Torque is the force applied to the end of the handle or cheater bar, times the length of the bar.

Use a torque wrench wherever possible

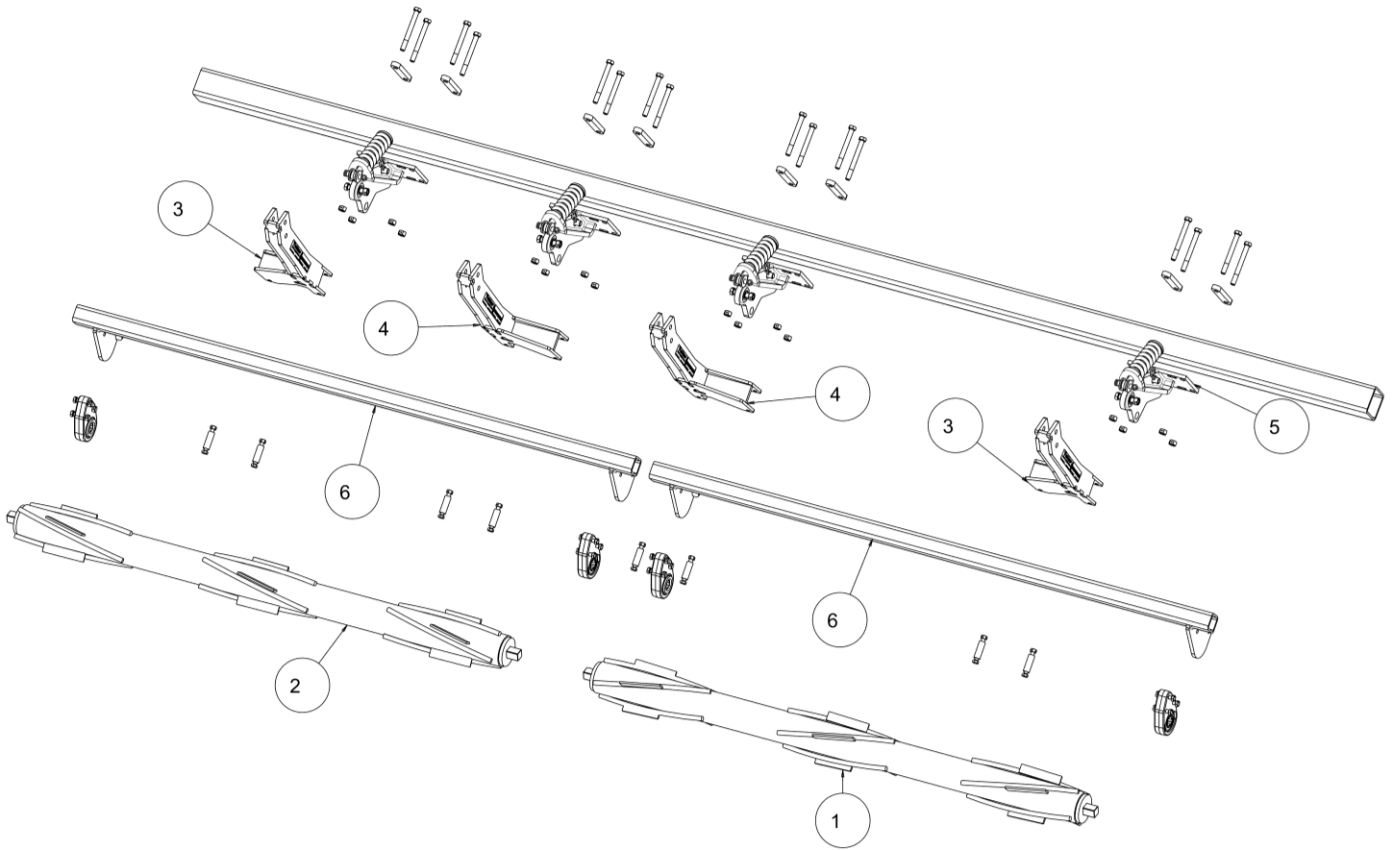
The following table shows torque in ft-lbs for coarse thread hardware.

Bolt Diameter and Threads per Inch	 Grade 2	 Grade 5	 A-325	 Grade 8
1/4	6	10		14
5/16	12	20		30
3/8 – 16	25	35		50
7/16 – 14	35	55		80
1/2 – 13	55	85		125
9/16 – 12	75	125		175
5/8 – 11	105	170		235
3/4-10	185	305		425
7/8 – 9	170	445		690
1-8	260	670		1030
1 1/8 – 7	365	900		1460
1 1/4 - 7	515	1275		2060
1 3/8 – 6	675	1675		2700
1 1/2 - 6	900	2150		3500
1 3/4 – 5	1410	3500		5600

PART IDENTIFICATION

5000-029A

CIH 4406 6 ROW

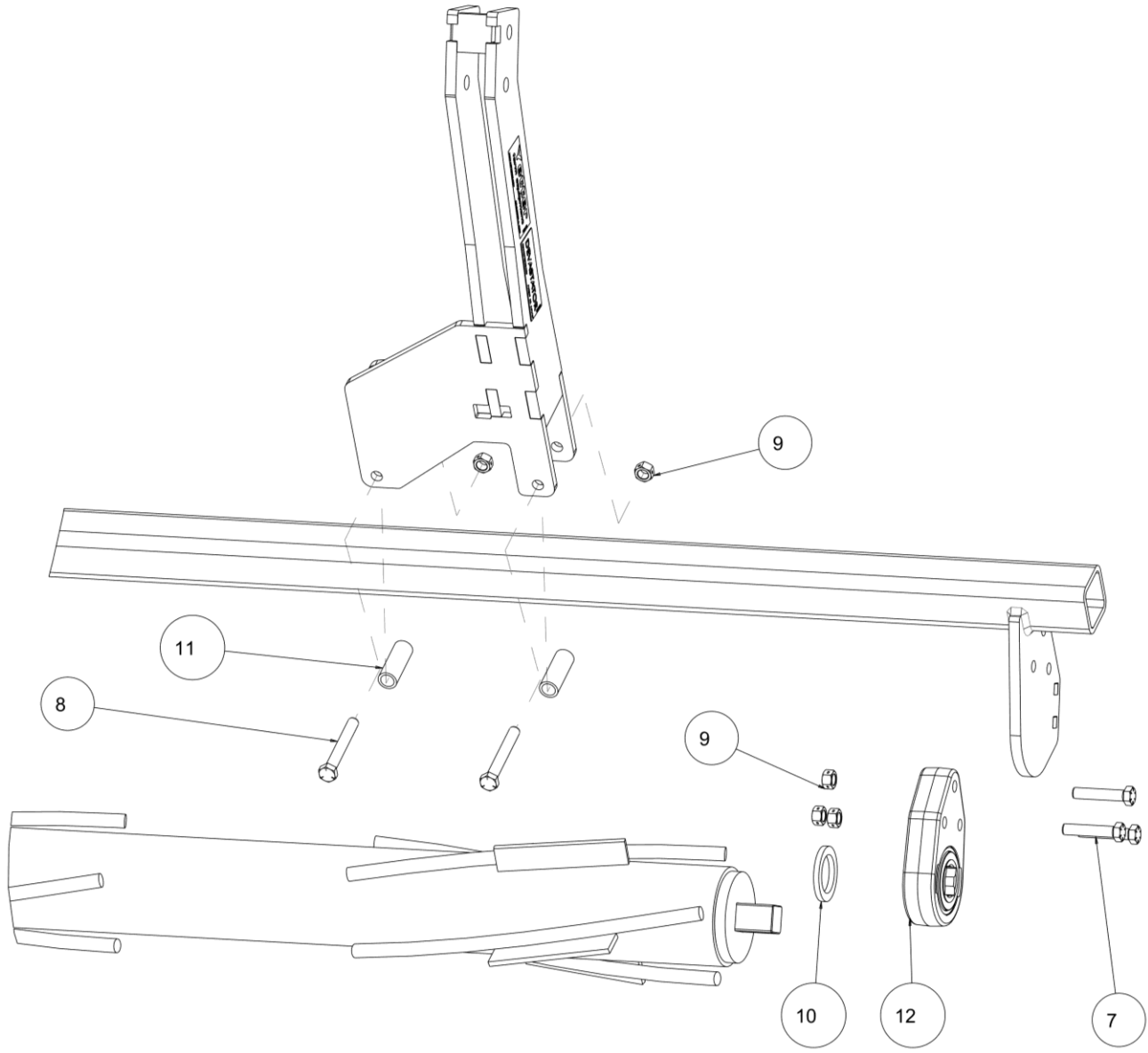


ITEM	PART #	DESCRIPTION	QTY
1	5000-211A	ROLLER W.A., LH 76"	1
2	5000-212A	ROLLER W.A., RH 76"	1
3	5000-256	OVER BEARING ARM 19" LH	2
4	5000-259	OVER BEARING ARM 19" RH	2
5	5000-260	MOUNT, DEV CASE 4400	4
6	5000-261	ROLLER MOUNT 3 ROW LONG	2

PART IDENTIFICATION

5000-029A

CIH 4406 6 ROW

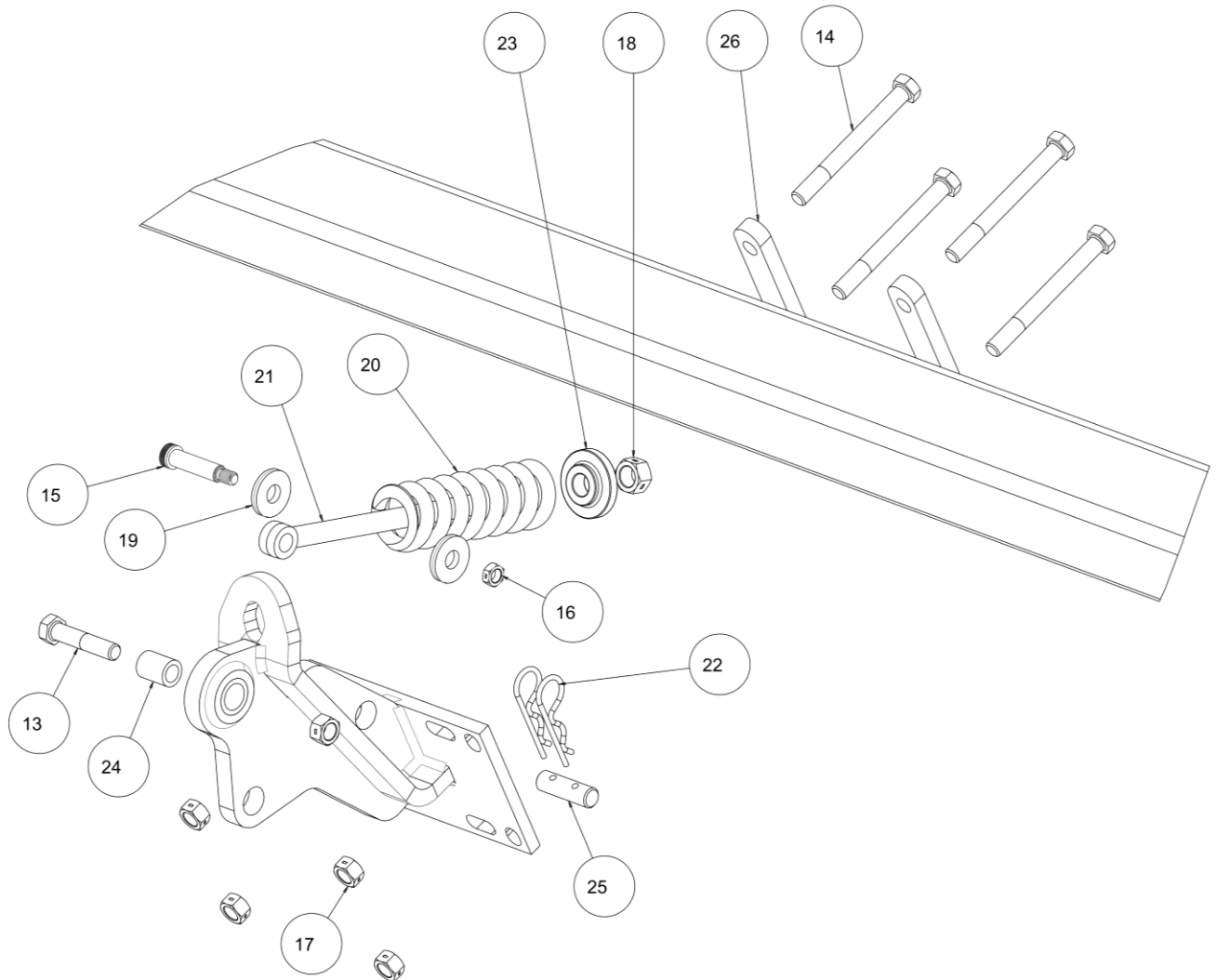


ITEM	PART #	DESCRIPTION	QTY
7	2502-353	1/2-13 X 2 1/2HHCS GR8 ZYD	12
8	2502-365	1/2-13 X 3-3/4 HHCS GR5 YD	8
9	2520-357	1/2-13 LOCK HEX NUT, GR A, ZP	20
10	5000-322	SHIM WASHER ZP	4
11	5000-378	SPACER BUSHING	8
12	5000-355	BEARING ASSEMBLY	4
	2550-059	DEVASTATOR BEARING ONLY (SERVICE PART)	4

PARTS IDENTIFICATION

5000-029A

CIH 4406 6 ROW

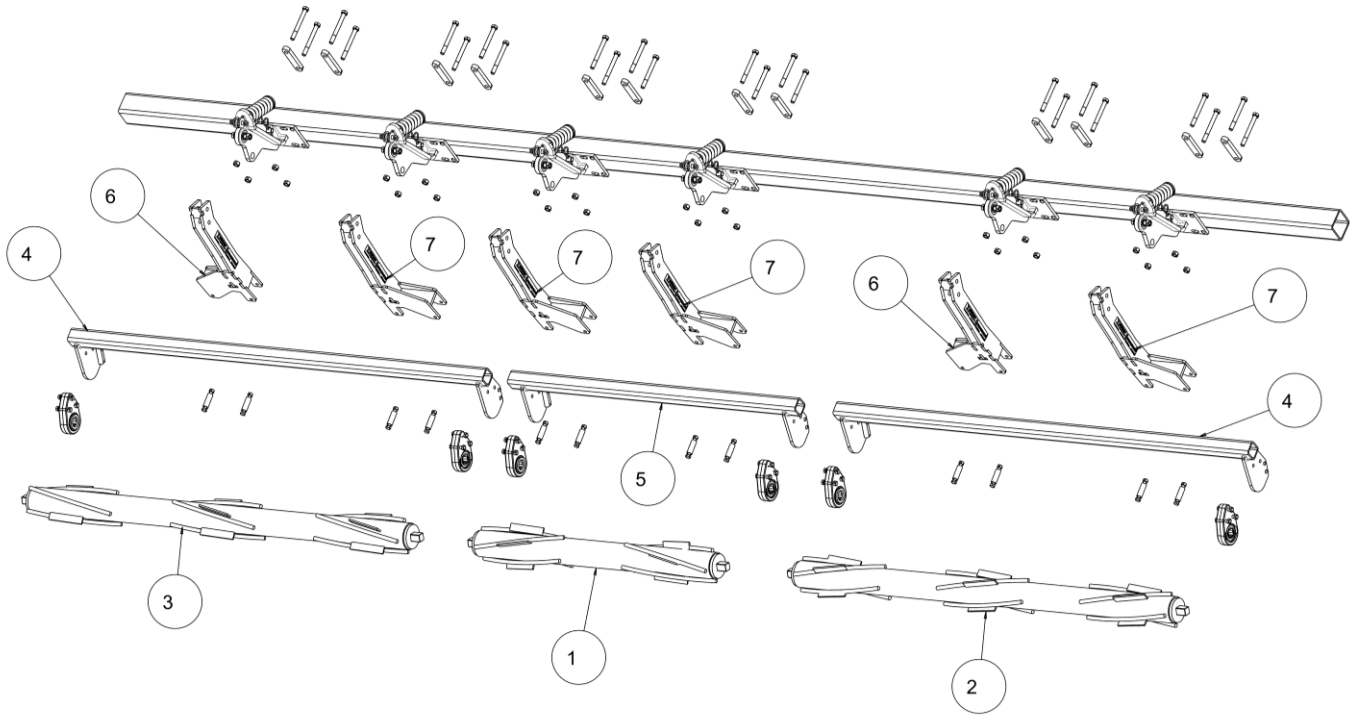


ITEM	PART #	DESCRIPTION	QTY
13	2502-325	5/8-11 X 3 HHCS GR 5 ZP	4
14	2502-352	5/8-11 X 6 HHCS GRADE 8 ZYD	16
15	2510-121	5/8" DIA. SHLDR, 2-1/4" L SHLDR, 1/2-13	4
16	2520-364	1/2-13 HEX LOCKNUT, JAM	4
17	2520-459	5/8-11 LOCK HEX NUT, GR A, ZP	20
18	2520-515	3/4-10 LOCK HEX NUT, GR A, ZP	4
19	2526-449	5/8FLATWASHER1/4+- .010 THK, ZP	8
20	2550-709	1/2 WIRE 2-1/2ODX1-1/2IDX7-1/4COMP SPR	4
21	2570-126	3/4 X 10 EYEBOLT, ZP	4
22	2570-465	7 GA. HAIRPIN COTTER ZP	8
23	2975-302	2975 SPRING BUSHING "PAINTED"	4
24	5000-318	PIVOT BUSHING	4
25	5000-323	LOCK UP PIN ZP.	4
26	5000-341	4" MOUNT STRAP	8

PART IDENTIFICATION

5000-030A

CIH 4408 8 ROW

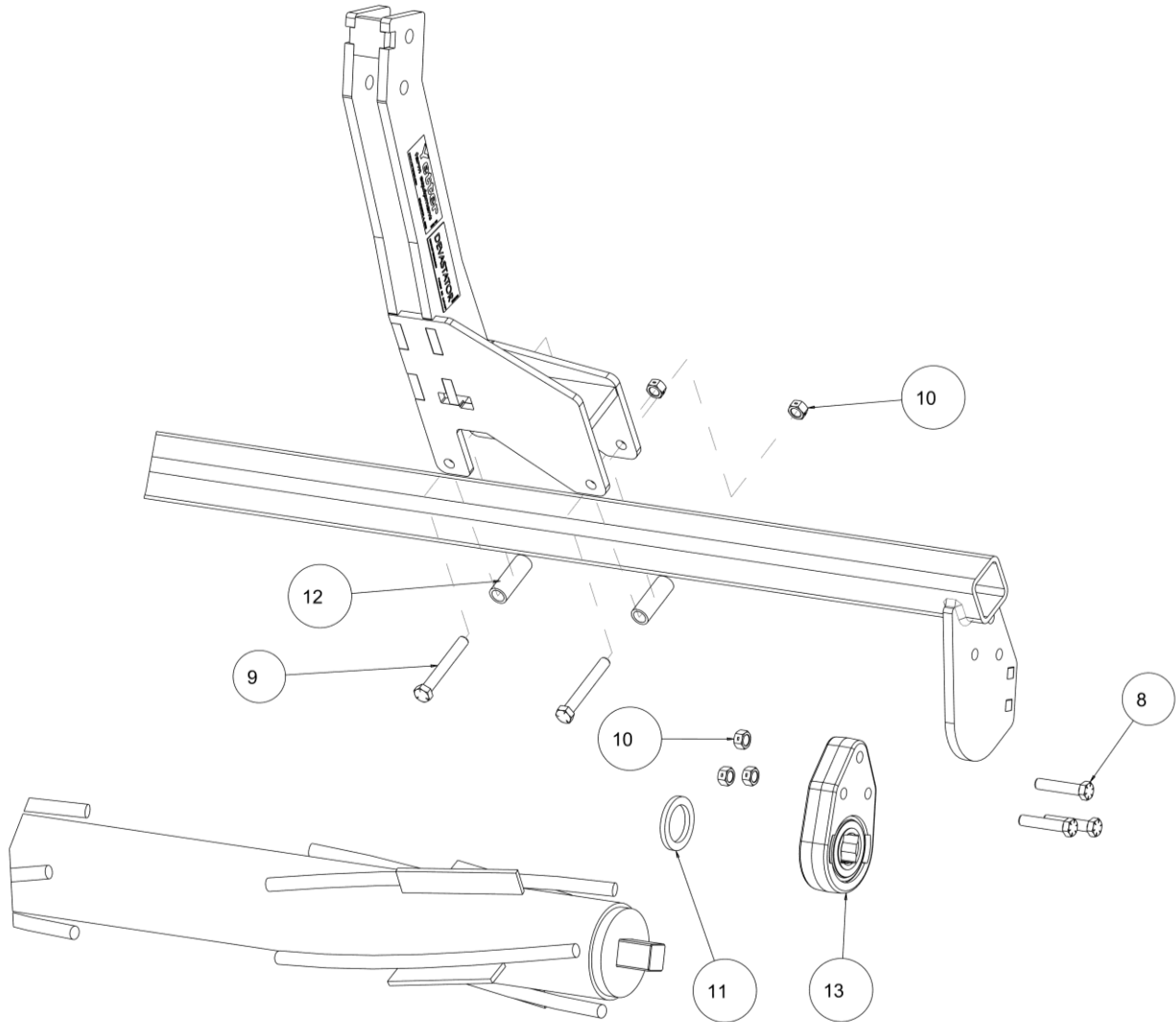


ITEM	PART #	DESCRIPTION	QTY
1	5000-203A	ROLLER W.A. 48"	1
2	5000-211A	ROLLER W.A., LH 76"	1
3	5000-212A	ROLLER W.A., RH 76"	1
4	5000-254	ROLLER MOUNT 3 ROW	2
5	5000-255	ROLLER MOUNT W.A.,	1
6	5000-256	OVER BEARING ARM 19" LH	2
7	5000-259	OVER BEARING ARM 19" RH	4

PART IDENTIFICATION

5000-030A

CIH 4408 8 ROW

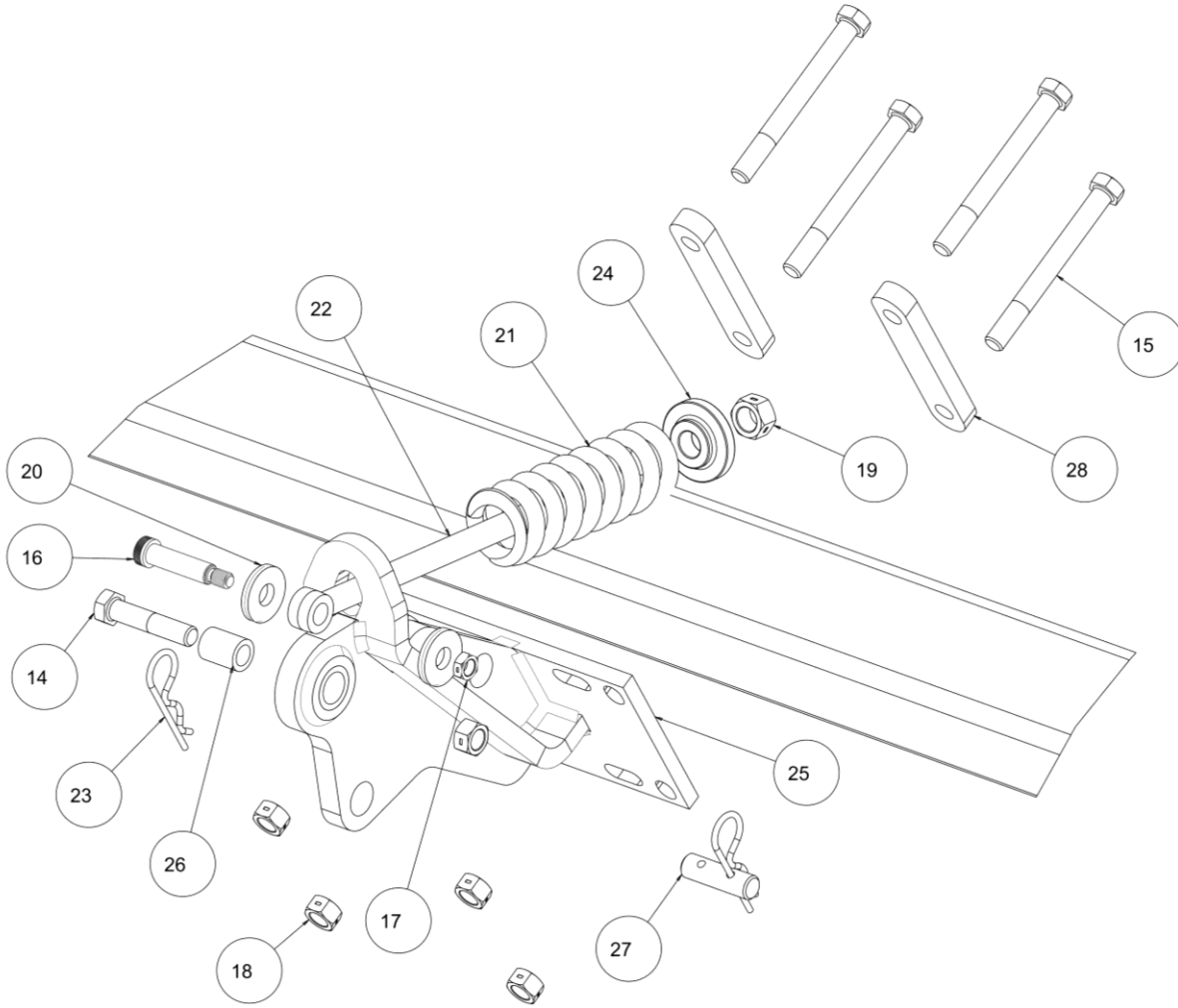


ITEM	PART #	DESCRIPTION	QTY
8	2502-353	1/2-13 X 2 1/2HHCS GR8 ZYD	18
9	2502-365	1/2-13 X 3-3/4 HHCS GR5 YD	12
10	2520-357	1/2-13 LOCK HEX NUT, GR A, ZP	30
11	5000-322	SHIM WASHER ZP	6
12	5000-378	SPACER BUSHING	12
13	5000-355	BEARING ASSEMBLY	6
	2550-059	DEVASTATOR BEARING ONLY (SERVICE PART)	6

PARTS IDENTIFICATION

5000-030A

CIH 4408 8 ROW

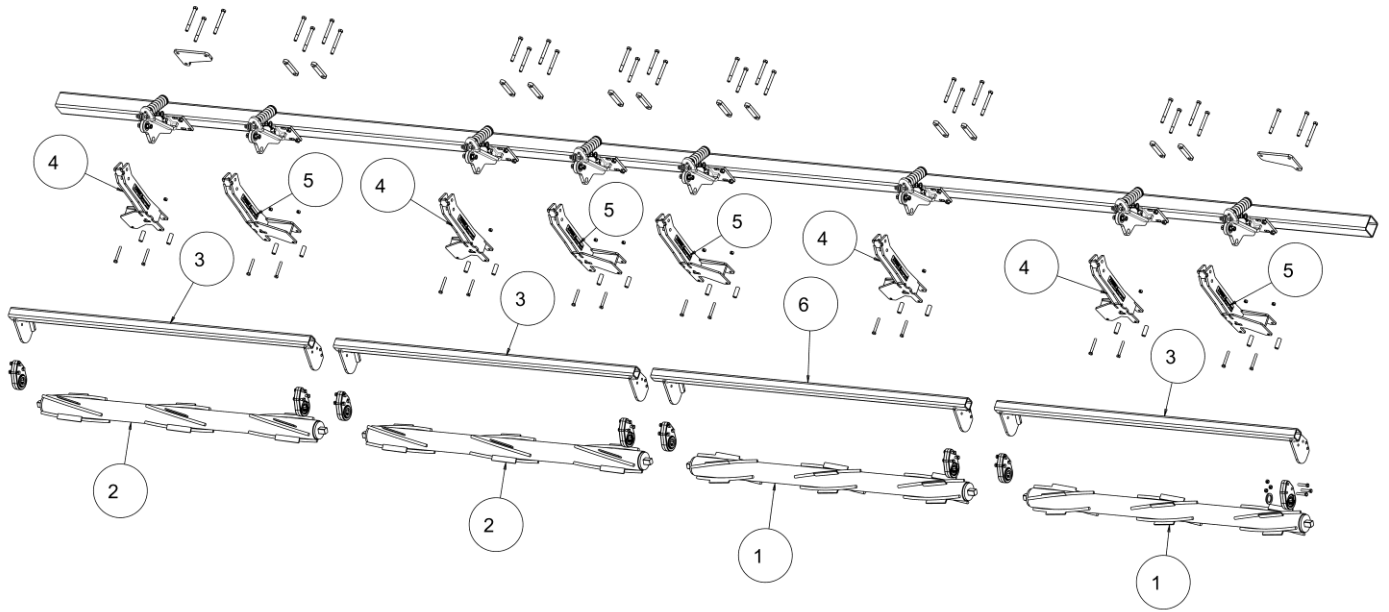


ITEM	PART #	DESCRIPTION	QTY
14	2502-325	5/8-11 X 3 HHCS GR 5 ZP	6
15	2502-352	5/8-11 X 6 HHCS GRADE 8 ZYD	24
16	2510-121	5/8" DIA. SHLDR, 2-1/4" L SHLDR, 1/2-13	6
17	2520-364	1/2-13 HEX LOCKNUT, JAM	6
18	2520-459	5/8-11 LOCK HEX NUT, GR A, ZP	30
19	2520-515	3/4-10 LOCK HEX NUT, GR A, ZP	6
20	2526-449	5/8FLATWASHER1/4+- .010 THK, ZP	12
21	2550-709	1/2 WIRE 2-1/2ODX1-1/2IDX7-1/4COMP SPR	6
22	2570-126	3/4 X 10 EYEBOLT, ZP	6
23	2570-465	7 GA. HAIRPIN COTTER ZP	12
24	2975-302	2975 SPRING BUSHING "PAINTED"	6
25	5000-260	MOUNT, DEV CASE 4400	6
26	5000-318	PIVOT BUSHING	6
27	5000-323	LOCK UP PIN ZP.	6
28	5000-341	4" MOUNT STRAP	12

PART IDENTIFICATION

5000-032A

CIH 4412 12 ROW

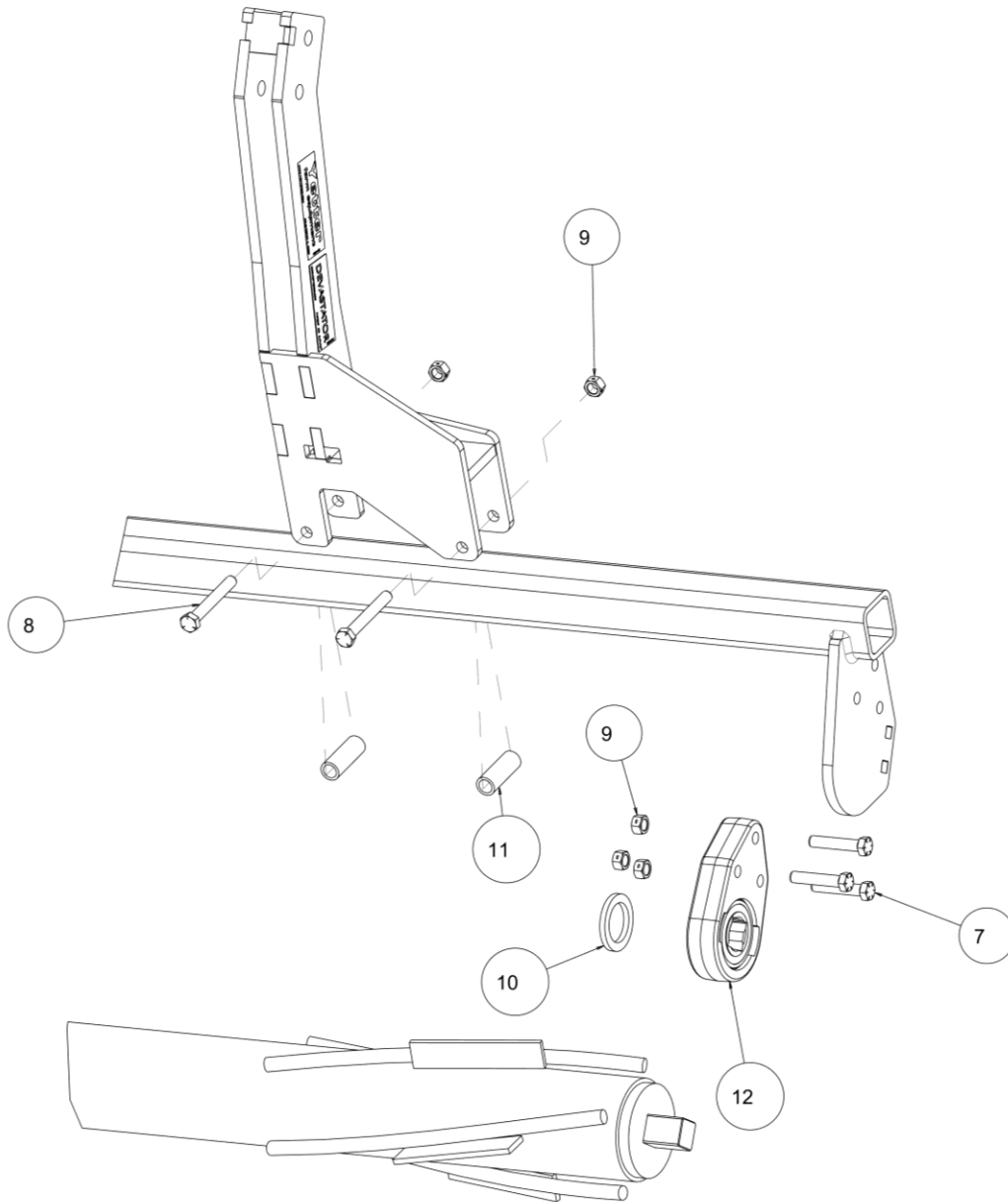


ITEM	PART #	DESCRIPTION	QTY
1	5000-211A	ROLLER W.A., LH 76"	2
2	5000-212A	ROLLER W.A., RH 76"	2
3	5000-254	ROLLER MOUNT 3 ROW	3
4	5000-256	OVER BEARING ARM 19" LH	4
5	5000-259	OVER BEARING ARM 19" RH	4
6	5000-261	ROLLER MOUNT 3 ROW LONG	1

PART IDENTIFICATION

5000-032A

CIH 4412 12 ROW

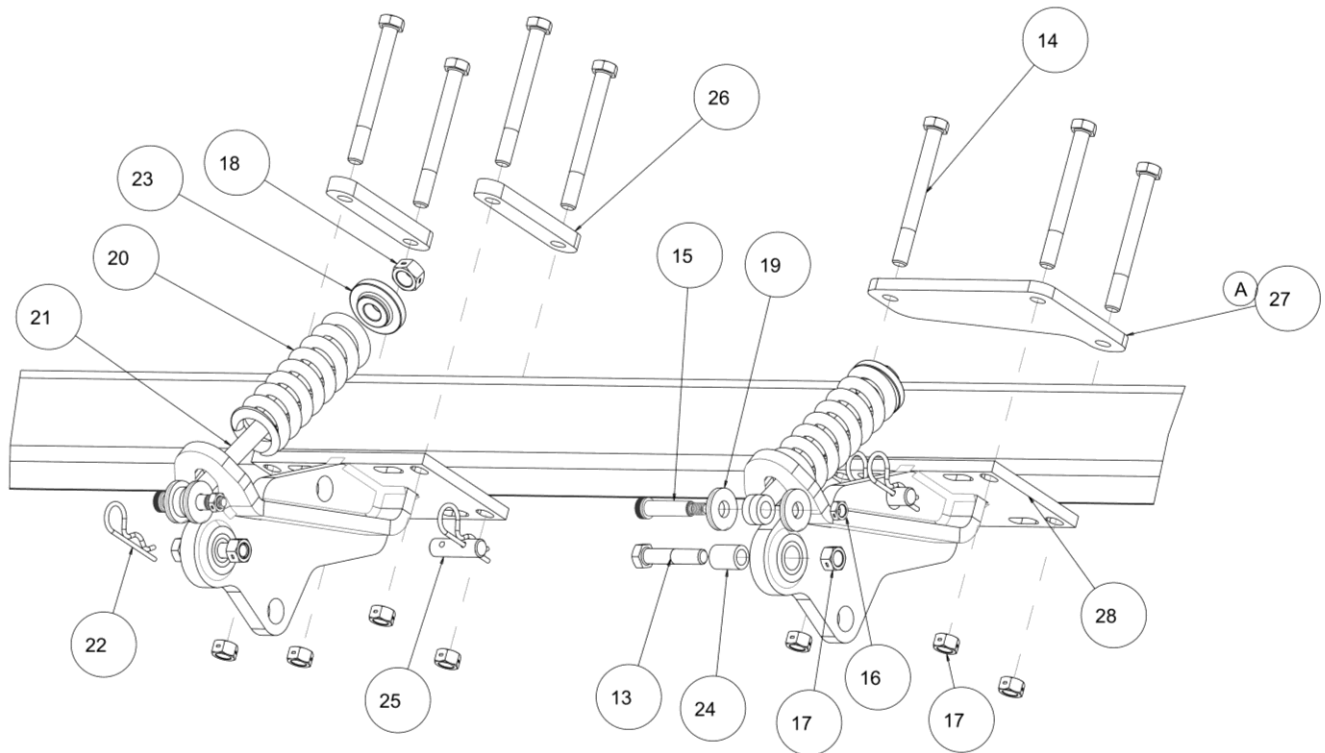


ITEM	PART #	DESCRIPTION	QTY
7	2502-353	1/2-13 X 2 1/2HHCS GR8 ZYD	24
8	2502-365	1/2-13 X 3-3/4 HHCS GR5 YD	16
9	2520-357	1/2-13 LOCK HEX NUT, GR A, ZP	40
10	5000-322	SHIM WASHER ZP	8
11	5000-378	SPACER BUSHING	16
12	5000-355	BEARING ASSEMBLY	8
	2550-059	DEVASTATOR BEARING ONLY (SERVICE PART)	8

PART IDENTIFICATION

5000-032A

CIH 4412 12 ROW



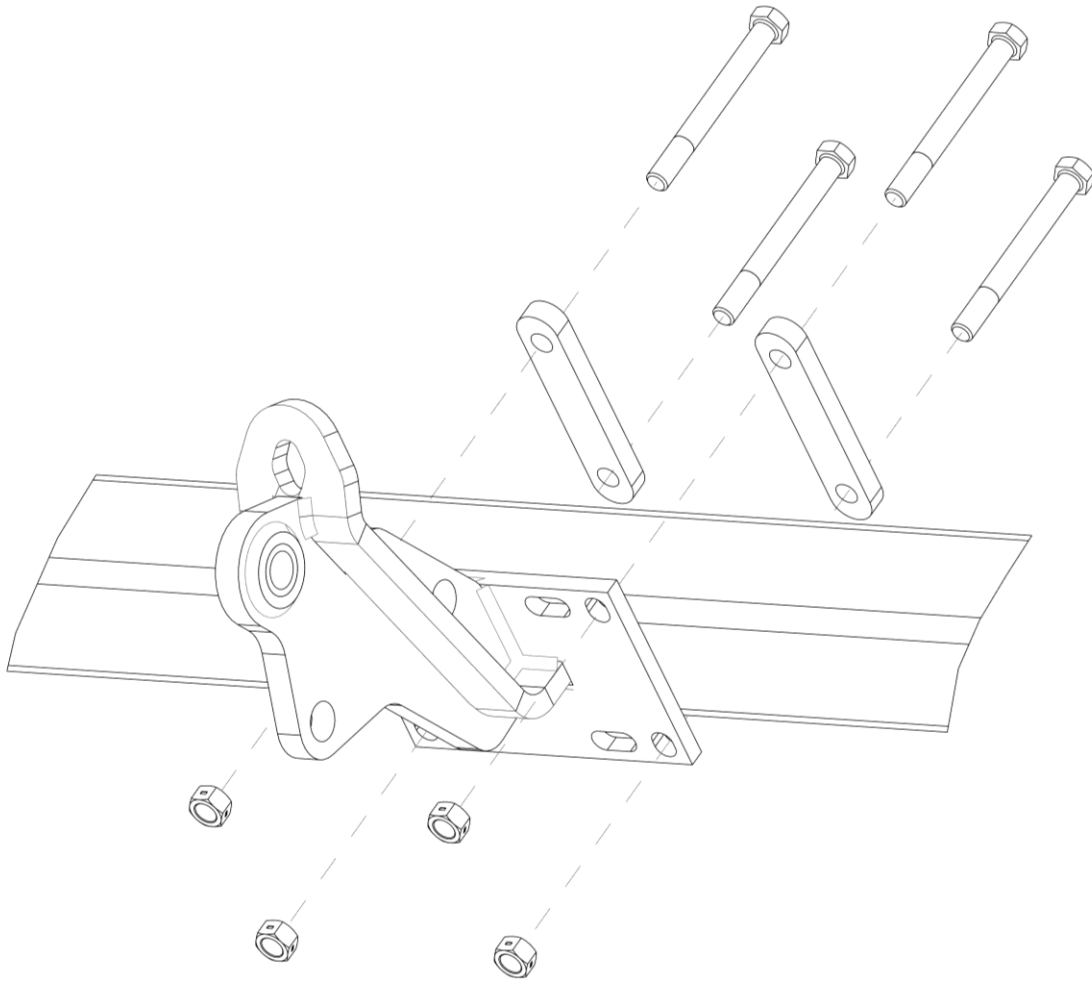
NOTE A: 5000-390 - "L" PLATE IS USED ON ROWS 1-2 AND 11-12

ITEM	PART #	DESCRIPTION	QTY
13	2502-325	5/8-11 X 3 HHCS GR 5 ZP	8
14	2502-352	5/8-11 X 6 HHCS GRADE 8 ZYD	30
15	2510-121	5/8" DIA. SHLDR, 2-1/4" L SHLDR, 1/2-13	8
16	2520-364	1/2-13 HEX LOCKNUT, JAM	8
17	2520-459	5/8-11 LOCK HEX NUT, GR A, ZP	38
18	2520-515	3/4-10 LOCK HEX NUT, GR A, ZP	8
19	2526-449	5/8FLATWASHER1/4+- .010 THK, ZP	16
20	2550-709	1/2 WIRE 2-1/2ODX1-1/2IDX7-1/4COMP SPR	8
21	2570-126	3/4 X 10 EYEBOLT, ZP	8
22	2570-465	7 GA. HAIRPIN COTTER ZP	16
23	2975-302	2975 SPRING BUSHING "PAINTED"	8
24	5000-318	PIVOT BUSHING	8
25	5000-323	LOCK UP PIN ZP.	8
26	5000-341	4" MOUNT STRAP	12
A	27	5000-390 L PLATE 4 X 7.75	2
28	5000-260	MOUNT, DEV CASE 4400	8

ASSEMBLY INSTRUCTIONS

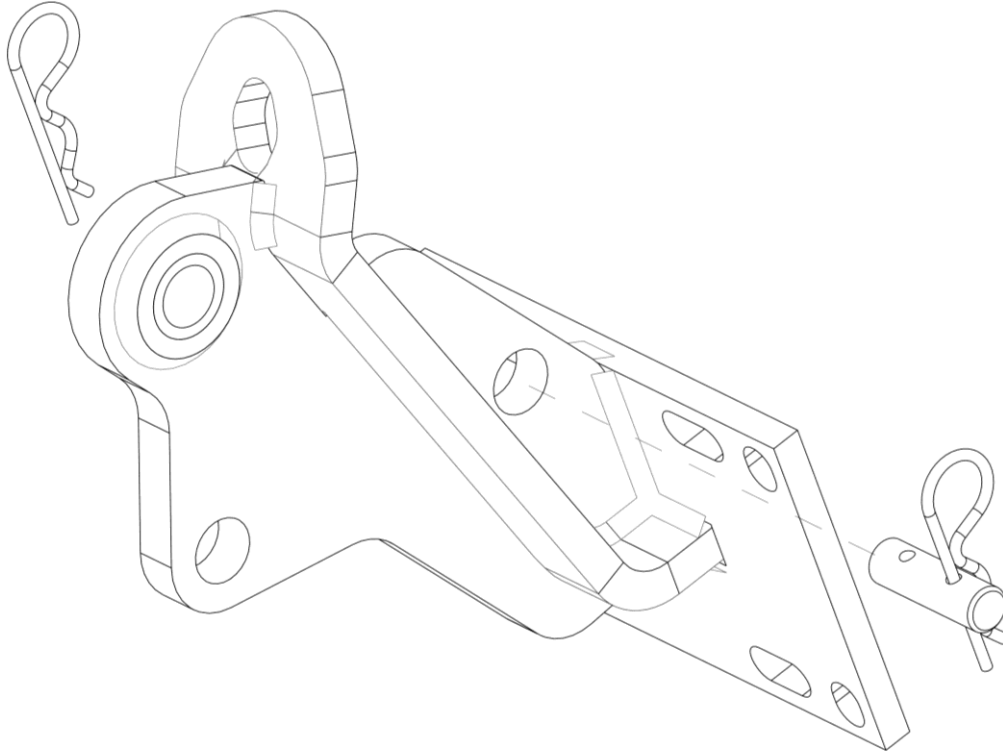
Step 1: Attach the 5000-260 mount brackets to the frame using the 5/8x6 bolts, clamps, and lock hex nuts.

Note: Do not fully tighten hardware until the pivot arms are installed in Step 3.



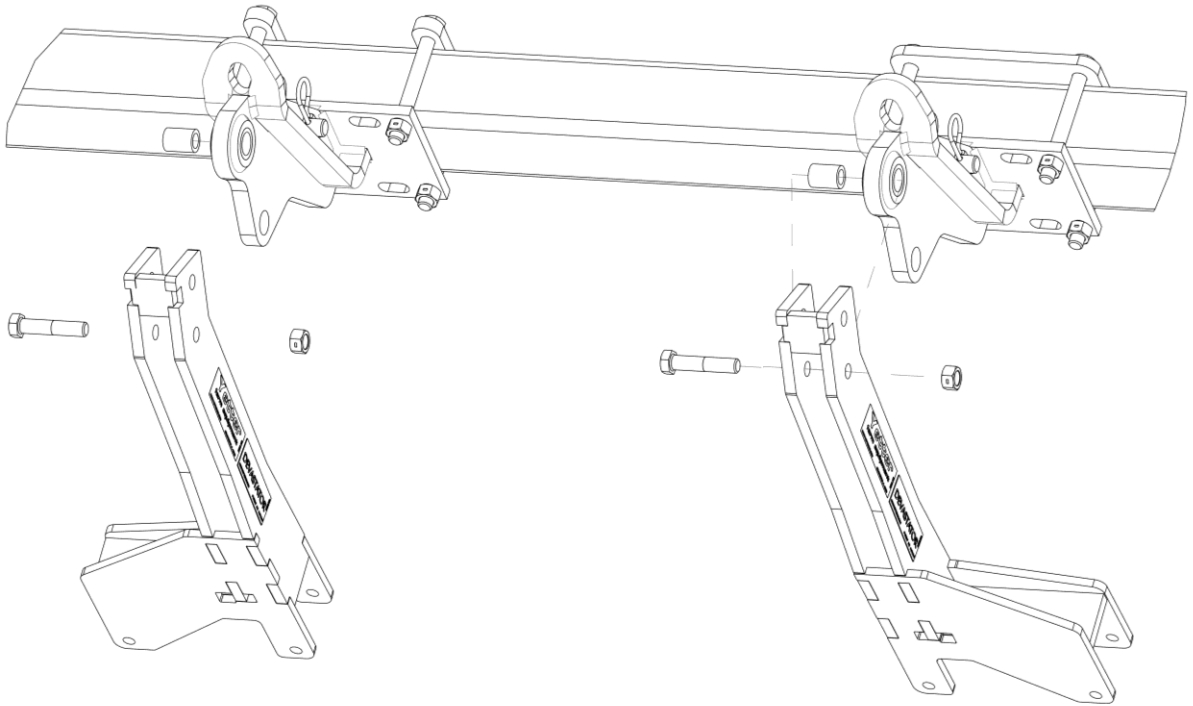
ASSEMBLY INSTRUCTIONS

Step 2: Install the 5000-323 lock-up pin in the storage location on the mount brackets. Secure with the supplied hairpin clips.



ASSEMBLY INSTRUCTIONS

Step 3: Attach the pivot arms to the mount brackets using the 5/8 x 3 bolts, pivot bushings, and lock hex nuts. Fully tighten hardware at this time.

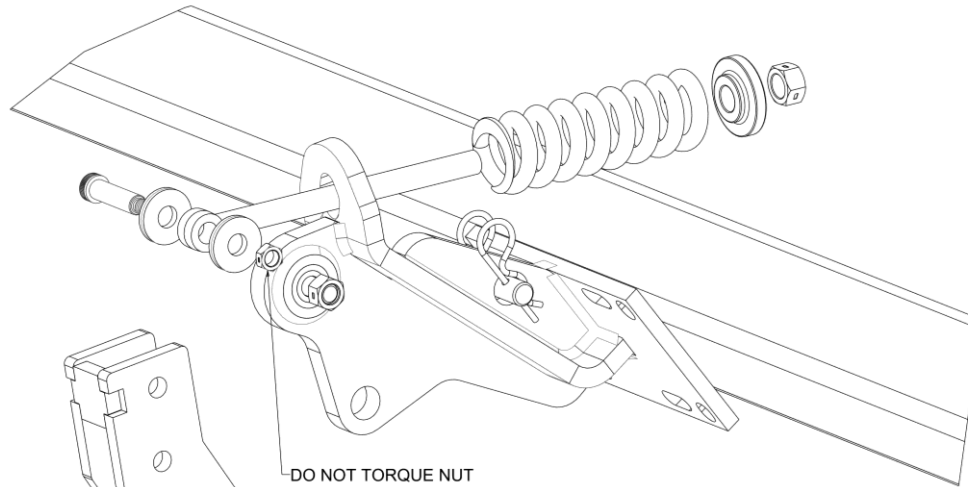


ASSEMBLY INSTRUCTIONS

Step 4: Install the pushrods into the mount brackets. Then, attach to the pivot arms with the 5/8 shoulder bolts, washers, and ½ jam lock hex nuts.

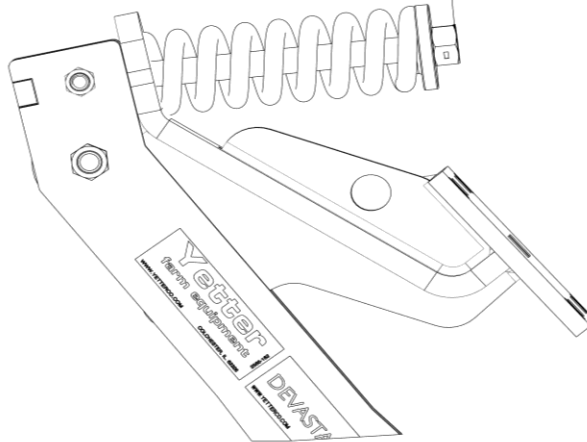
Note: The washers are installed on each side of the “eye” of the pushrod.

Now install the compression spring, spring bushing, and ¾ lock hex nuts.



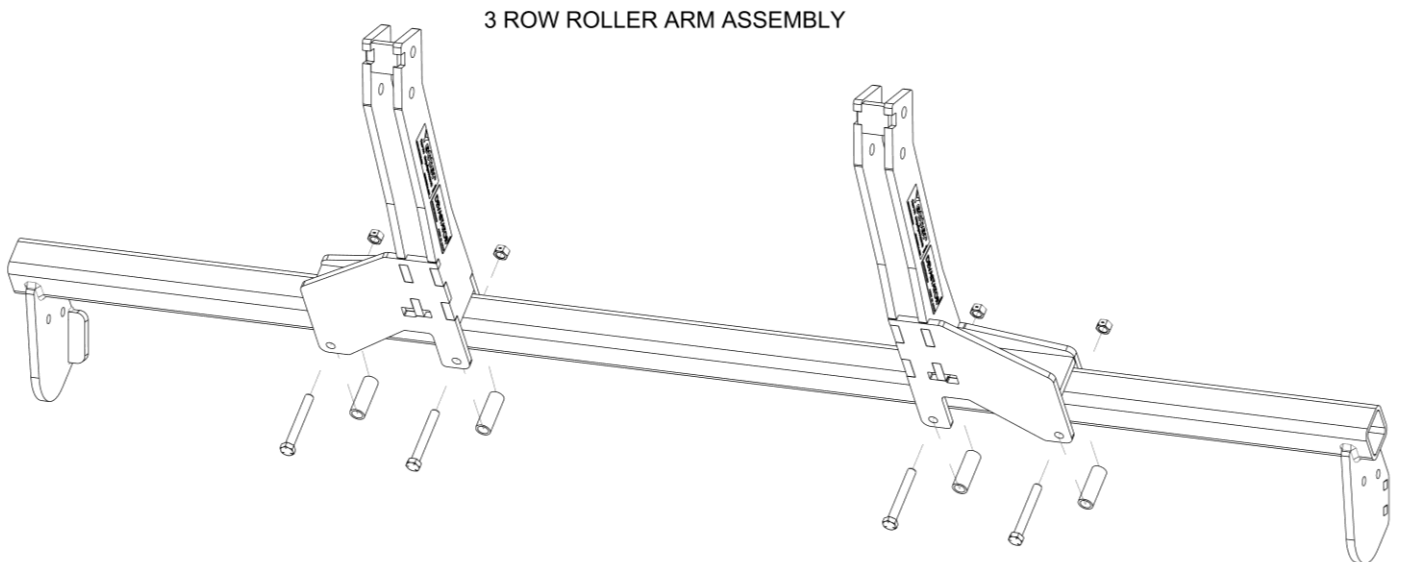
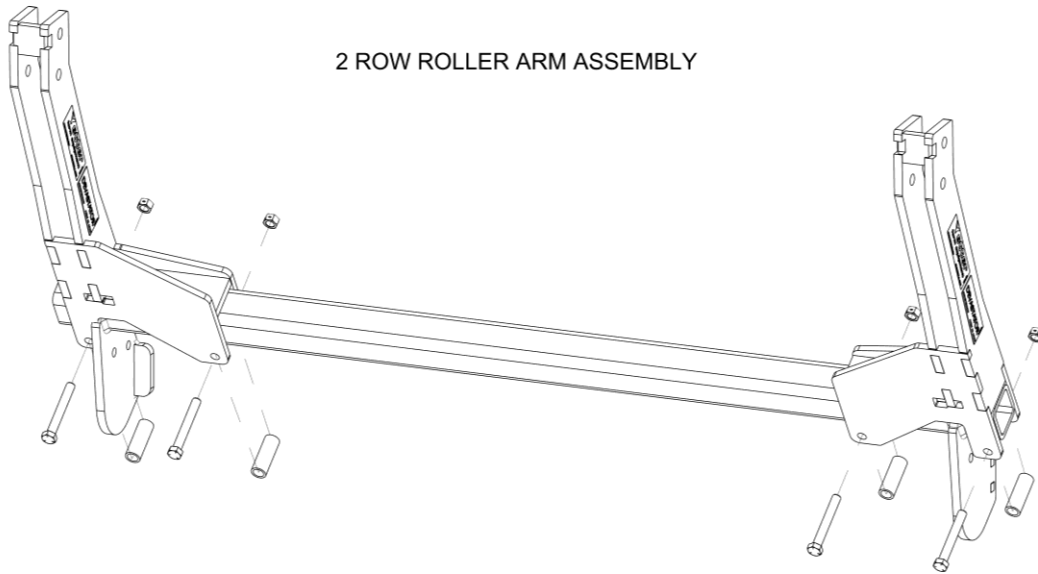
DO NOT TORQUE NUT
TIGHTEN UNTIL SHOULDER
BOLT ISN'T FREE TO TURN

TIGHTEN UNTIL 3/4" LOCK HEX NUT IS
FLUSH WITH THE END OF PUSHROD



ASSEMBLY INSTRUCTIONS

Step 5: Attach the roller mount to the pivot arms using the $\frac{1}{2}$ x 3-3/4 bolts, spacers, and lock nuts. Slide the roller mount side-to-side to clear the end of the corn head. Fully tighten hardware.

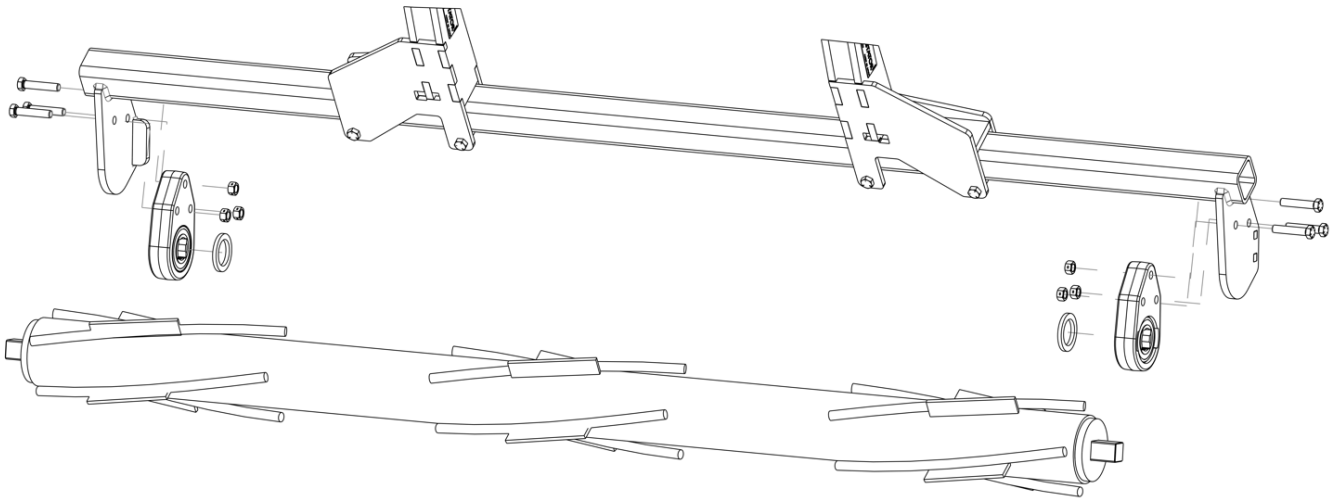


ASSEMBLY INSTRUCTIONS

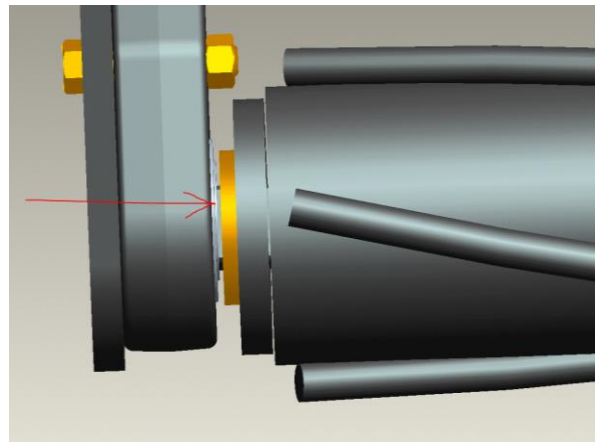
Step 6: Install the shims and bearings onto the rollers.

Note: The extended race of the bearing will face toward the roller

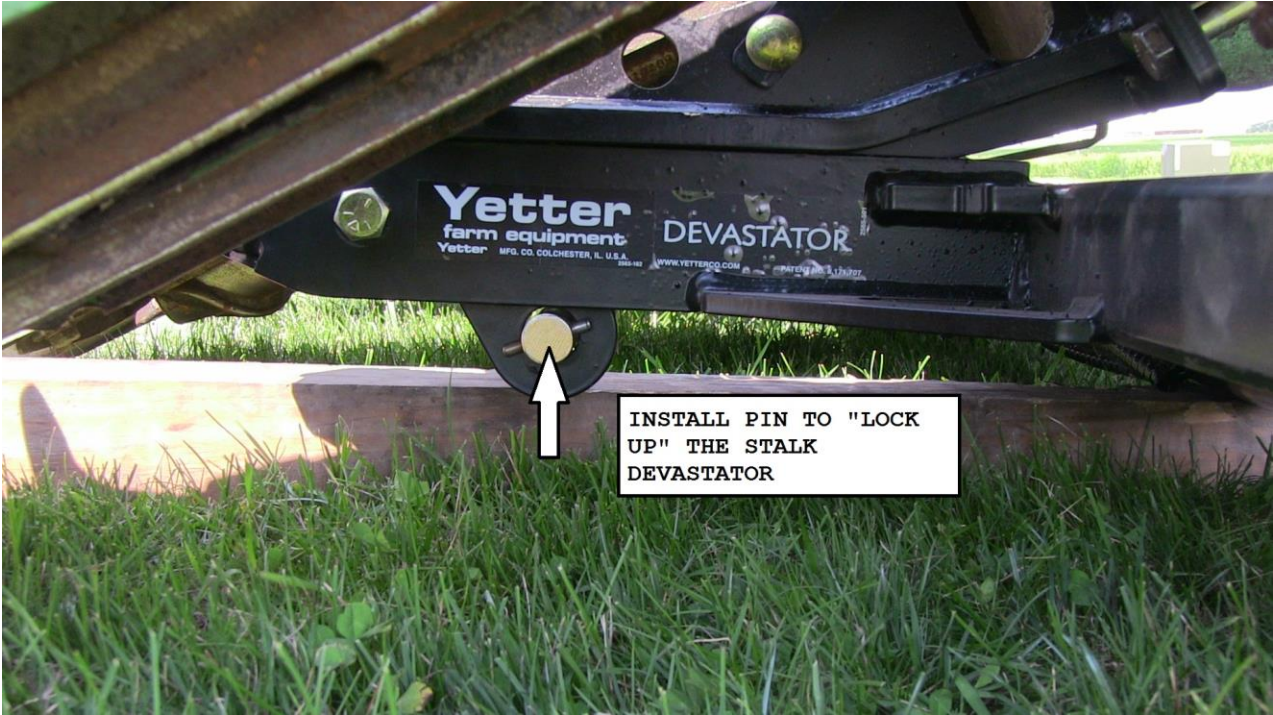
Attach the bearing/roller assembly to the roller arms using the $\frac{1}{2}$ x 2-1/2 bolts and lock nuts.



The side of the bearing assembly with the bearing protruding MUST be installed toward the roller!



LOCKING UP THE 5000 SERIES STALK DEVASTATOR



Our name Is getting known

Just a few years ago, Yetter products were sold primarily in the Midwest. Then, we embarked on a program of expansion to move into the East, South, West, and now North into Canada. We are even getting orders from as far away as Australia and Africa.

So, when you buy Yetter products, you are buying a name that is recognized. A name that is known and respected. A name that has become a part of American agriculture and is synonymous with quality and satisfaction in the field of conservation tillage.

From all of us here at Yetter,
Thank you

Yetter Manufacturing
Colchester, IL 62326
Phone: (309)776-5777
Toll Free: (800)447-5777
Fax: (309)776-3222
Website: www.yetterco.com
E-mail: info@yetterco.com