



**5000 SERIES
STALK
DEVASTATOR
CORN STALK ROLLER**

PATENTED

5000-025A, 5000-026A, 5000-027A, 5000-028A
OPERATOR'S MANUAL
PART IDENTIFICATION
2565-785_RevB – 01/2017



YETTER MANUFACTURING CO.
FOUNDED 1930

Colchester, IL 62326-0358
Toll free: 800/447-5777
309/776-3222 (Fax)
Website: www.yetterco.com
E-mail: info@yetterco.com

YETTER

FOREWORD

You've just joined an exclusive but rapidly growing club.

For our part, we want to welcome you to the group and thank you for buying a Yetter product.

We hope your new Yetter products will help you achieve both goals-increase your productivity and increase your efficiency so that you may generate more profit.

This operator's manual has been designed into four major sections: Foreword, Safety Precautions, Installation Instructions and Parts Breakdown.



This **SAFETY ALERT SYMBOL** indicates important safety messages in the manual. When you see this symbol, be alert to the possibility of **PERSONAL INJURY** and carefully read the message that follows.

The word **NOTE** is used to convey information that is out of context with the manual text. It contains special information such as specifications, techniques and reference information of a supplementary nature.

The word **IMPORTANT** is used in the text when immediate damage will occur to the machine due

to improper technique or operation. Important will apply to the same information as specified by note only of an immediate and urgent nature.

It is the responsibility of the user to read the operator's manual and comply with the safe and correct operating procedure and to lubricate and maintain the product according to the maintenance schedule in the operator's manual.

The user is responsible for inspecting his machine and for having parts repaired or replaced when continued use of the product would cause damage or excessive wear to the other parts.

It is the user's responsibility to deliver his machine to the Yetter dealer who sold him the product for service or replacement of defective parts, which are covered by the warranty policy.

If you are unable to understand or follow the instructions provided in this publication, consult your local Yetter dealer or contact:

YETTER MANUFACTURING CO.

309/776-4111

800/447-5777

309/776-3222 (FAX)

Website: www.yetterco.com

E-mail: info@yetterco.com

WARRANTY

Yetter Manufacturing warrants all products manufactured and sold by it against defects in material. This warranty being expressly limited to replacement at the factory of such parts or products as shall appear to be defective after inspection. This warranty does not obligate the Company to bear cost of labor in replacement of parts. It is the policy of the Company to make improvements without incurring obligations to add them to any unit already sold. No warranty is made or authorized to be made, other than herein set forth. This warranty is in effect for one year after purchase.

DEALER: _____

Yetter Manufacturing warrants its own products only and cannot be responsible for damages to equipment on which mounted.



BE ALERT! YOUR SAFETY IS INVOLVED.



WATCH FOR THIS SYMBOL. IT POINTS OUT IMPORTANT SAFETY PRECAUTIONS. IT MEANS “ATTENTION---BECOME ALERT!”

It is your responsibility as an owner, operator, or supervisor to know and instruct everyone using this machine at the time of initial assignment and at least annually thereafter, of the proper operation, precautions, and work hazards which exist in the operation of the machine in accordance with OSHA regulations.

Safety Is No Accident

The following safety instructions, combined with common sense, will save your equipment from needless damage and the operator from unnecessary exposure to personal hazard. Pay special attention to the caution notes in the text. Review this manual at least once each year with new and/or experienced operators.



1. Read and understand the operator's manual before operating this machine. Failure to do so is considered a misuse of the equipment.
2. Make sure equipment is secure before operating.
3. Always keep children away from equipment when operating.
4. Make sure everyone that is not directly involved with the operation is out of the work area before beginning the operation.
5. Make sure all safety devices, shields, and guards are in place and are functional before beginning the operation.
6. Shut off power to adjust, service, or clean.
7. Keep hands, feet, and clothing away from moving parts. It is a good idea to remove all jewelry before starting the operation.
8. Visually inspect the machine periodically during operation for signs of excessive vibration, loose fasteners, and unusual noises.

PLEASE READ, VERY IMPORTANT



**SECURE CORN HEADER AGAINST
UNWANTED LOWERING BY APPLYING
THE LOCKING MECHANISM ON THE
HYDRAULIC CYLINDERS!**

1. ATTACH HEAD TO COMBINE, LOCK HEAD TO COMBINE
2. RAISE THE HEAD OFF THE GROUND AND ENGAGE THE SAFETY STOP ON THE FEEDER HOUSE CYLINDER.
3. TURN OFF COMBINE ENGINE AND REMOVE KEY.

**FOLLOW THE INSTRUCTIONS OF THE COMBINE
MANUFACTURER.**

PLEASE READ, VERY IMPORTANT



Subject to the size and weight of the corn header, one or two additional hydraulic cylinders may be required.

The combine manufacturer generally keeps the corresponding kits readily available for the dealer.

Subject to the design of the corn header and carrying capacity of the different combines, the steering axle may require the fitting of additional weights and the rear tires might need to be filled with ballast.

**FOLLOW THE INSTRUCTIONS OF THE COMBINE
MANUFACTURER.**

TABLE OF CONTENTS

INTRODUCTION.....	2
WARRANTY.....	2
SAFETY INFORMATION.....	2-5
TABLE OF CONTENTS.....	6
TORQUE.....	7
PARTS IDENTIFICATON	
5000-025A.....	8-10
5000-026A.....	11-13
5000-027A.....	14-16
5000-028A.....	17-19
ASSEMBLY INSTRUCTIONS.....	20-26
LOCK UP PIN.....	27

BOLT TORQUE

All hardware used on the 5000 Devastator is Grade 5 unless otherwise noted. Grade 5 cap screws are marked with three radial lines on the head. If hardware must be replaced, be sure to replace it with hardware of equal size, strength and thread type. Refer to the torque values chart when tightening hardware.

Important: Over tightening hardware can cause as much damage as when under tightening. Tightening hardware beyond the recommended range can reduce its shock load capacity.

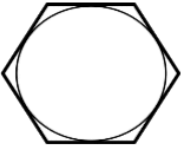


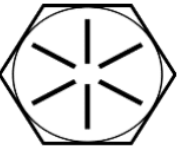
The chart below is a guide for proper torque. Use it unless a specified torque is called out elsewhere in the manual.



Torque is the force you apply to the wrench handle or the cheater bar, times the length of the handle or bar.

Use a torque wrench whenever possible.

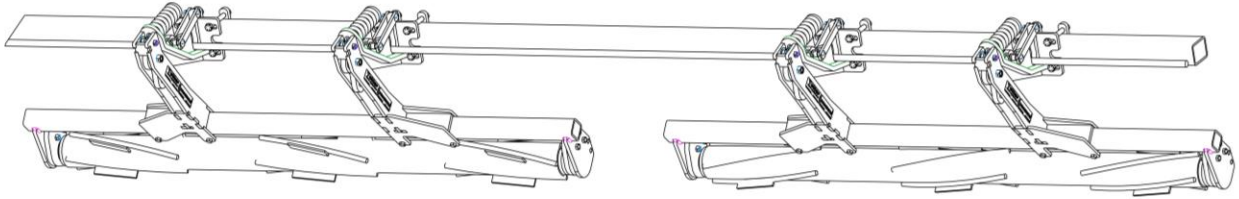
The following table shows torque in ft. lbs. for coarse thread hardware.

Bolt Diameter and Threads per Inch	 Grade 2	 Grade 5	 A-325	 Grade 8
1/4	6	10	14	14
5/16	12	20	30	30
3/8 – 16	25	35	50	50
7/16 – 14	35	55	80	80
1/2 – 13	55	85	125	125
9/16 – 12	75	125	175	175
5/8 – 11	105	170	235	235
3/4-10	185	305	425	425
7/8 – 9	170	445	690	690
1-8	260	670	1030	1030
1 1/8 – 7	365	900	1460	1460
1 1/4 - 7	515	1275	2060	2060
1 3/8 – 6	675	1675	2700	2700
1 1/2 - 6	900	2150	3500	3500
1 3/4 – 5	1410	3500	5600	5600

PART IDENTIFICATION

5000-025A

6 ROW JD DEVASTATOR



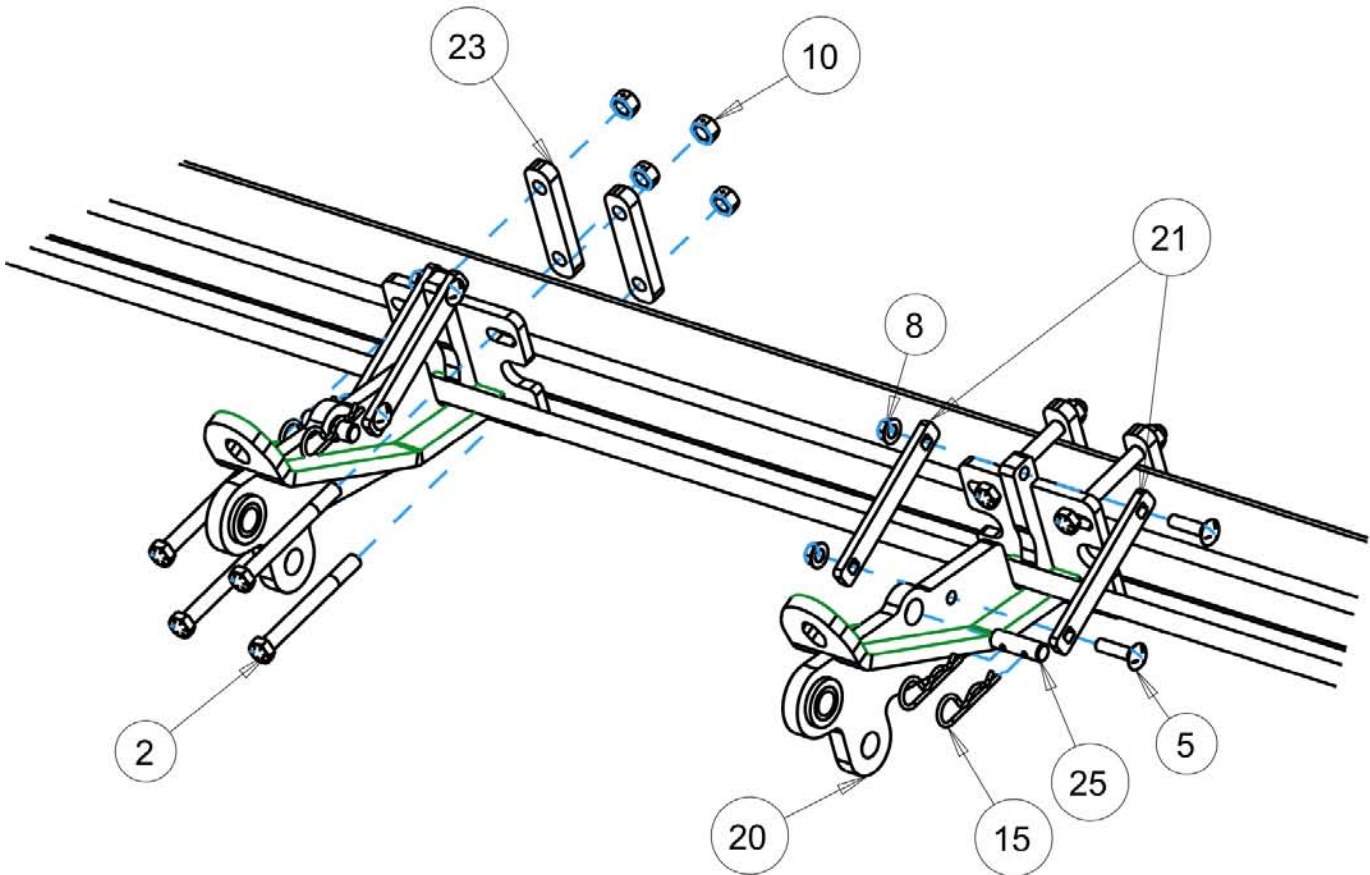
JOHN DEERE 643/693/606C
612C WHEEL TRACKS ONLY

ITEM	PART #	DESCRIPTION	QTY
1	2502-325	5/8-11 X 3 HHCS GR 5 ZP	4
2	2502-352	5/8-11 X 6 HHCS GRADE 8 ZYD	16
3	2502-353	1/2-13 X 2 1/2HHCS GR8 ZYD	12
4	2502-365	1/2-13 X 3-3/4 HHCS GR5 YD	8
5	2505-345	1/2-13 X 2 CAR BLT GR5 ZP	8
6	2510-121	5/8" DIA. SHLDR, 2-1/4" L SHLDR, 1/2-13	4
7	2520-357	1/2-13 LOCK HEX NUT, GR A, ZP	20
8	2520-361	1/2-13FLANGE WHZLCK HXNT, GR 5, ZP	8
9	2520-364	1/2-13 HEX LOCKNUT, JAM	4
10	2520-459	5/8-11 LOCK HEX NUT, GR A, ZP	20
11	2520-515	3/4-10 LOCK HEX NUT, GR A, ZP	4
12	2526-449	5/8FLATWASHER1/4+- .010 THK, ZP	8
13	2550-709	1/2 WIRE 2-1/2ODX1-1/2IDX7-1/4COMP SPR	4
14	2570-126	3/4 X 10 EYEBOLT, ZP	4
15	2570-465	7 GA. HAIRPIN COTTER ZP	8
16	2975-302	2975 SPRING BUSHING "PAINTED"	4
17	5000-136	SPRING AND ARM BOLT BAG	4
18	5000-138	SINGLE ARM BOLT BAG	4
19	5000-139	DEV MOUNT HW JD 3" X 4"	4
20	5000-202	MOUNT BRACKET W.A., SINGLE	4
21	5000-309	SUPPORT STRAP	8
22	5000-318	PIVOT BUSHING	4
23	5000-319	MOUNT STRAP 3"	8
24	5000-322	SHIM WASHER ZP	4
25	5000-323	LOCK UP PIN ZP.	4
26	5000-355	1-1/4 DISC HARROW BEARING, W209PPB5, HD ASS'Y	4
27	5000-378	SPACER BUSHING	8
28	5000-211A	ROLLER W.A., LH 76"	1
29	5000-212A	ROLLER W.A., RH 76"	1
30	5000-254	ROLLER MOUNT 3 ROW	2
31	5000-256	OVER BEARING ARM 19" LH	2
32	5000-259	OVER BEARING ARM 19" RH	2
34	2550-059	DEVASTATOR BEARING ONLY	4

PART IDENTIFICATION

5000-025A

6 ROW JD DEVASTATOR

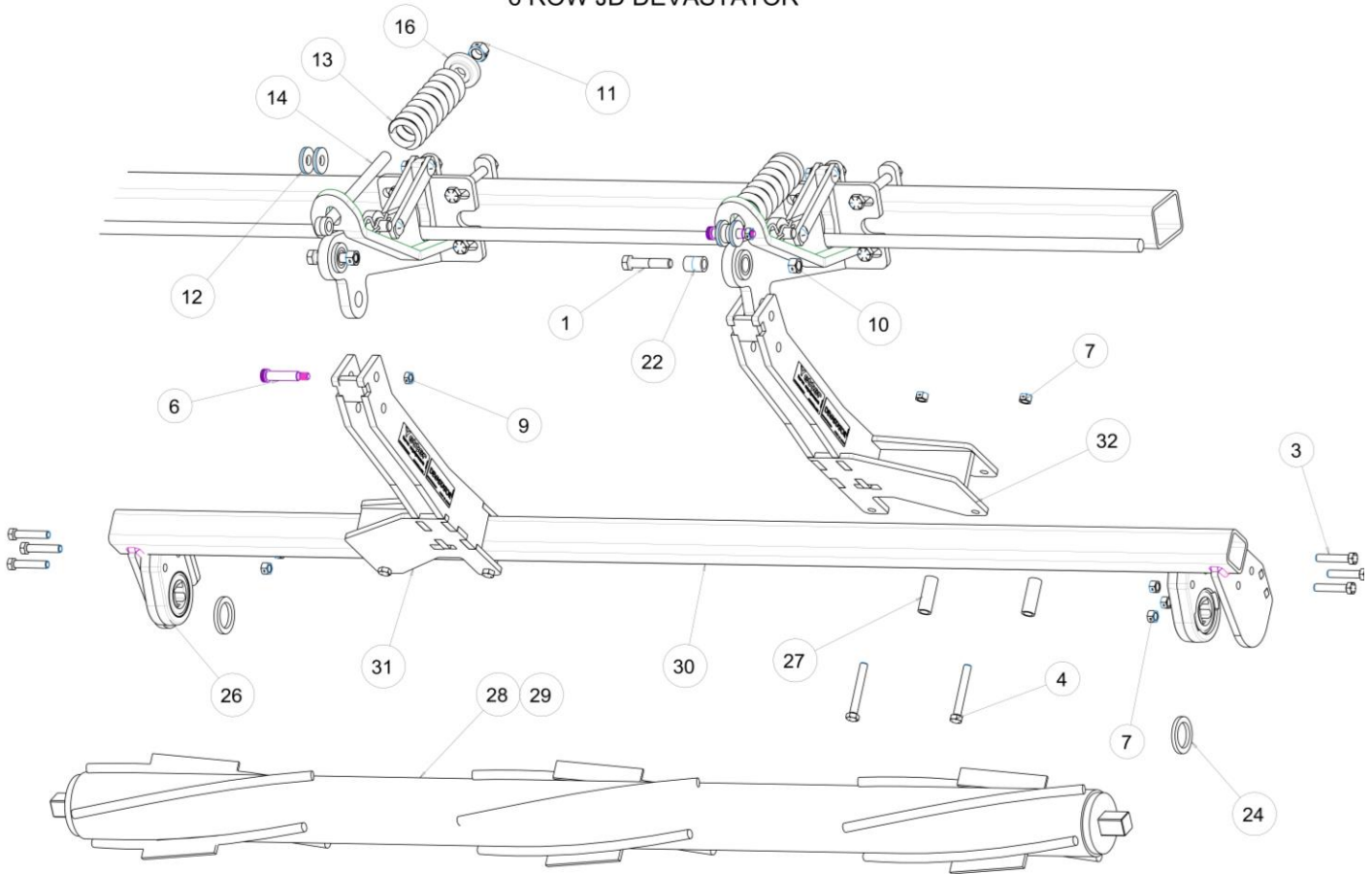


ITEM	PART #	DESCRIPTION	QTY
2	2502-352	5/8-11 X 6 HHCS GRADE 8 ZYD	16
5	2505-345	1/2-13 X 2 CAR BLT GR5 ZP	8
8	2520-361	1/2-13FLANGE WHZLCK HXNT, GR 5, ZP	8
10	2520-459	5/8-11 LOCK HEX NUT, GR A, ZP	20
15	2570-465	7 GA. HAIRPIN COTTER ZP	8
20	5000-202	MOUNT BRACKET W.A., SINGLE	4
21	5000-309	SUPPORT STRAP	8
23	5000-319	MOUNT STRAP 3"	8
25	5000-323	LOCK UP PIN ZP.	4

PART IDENTIFICATION

5000-025A

6 ROW JD DEVASTATOR

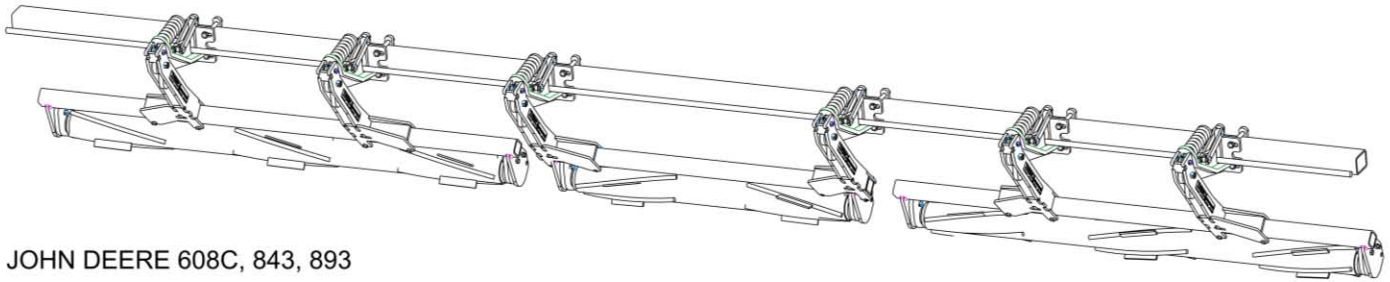


ITEM	PART #	DESCRIPTION	QTY
1	2502-325	5/8-11 X 3 HHCS GR 5 ZP	4
3	2502-353	1/2-13 X 2 1/2HHCS GR8 ZYD	12
4	2502-365	1/2-13 X 3-3/4 HHCS GR5 YD	8
6	2510-121	5/8" DIA. SHLDR, 2-1/4" L SHLDR, 1/2-13	4
7	2520-357	1/2-13 LOCK HEX NUT, GR A, ZP	20
9	2520-364	1/2-13 HEX LOCKNUT, JAM	4
10	2520-459	5/8-11 LOCK HEX NUT, GR A, ZP	20
11	2520-515	3/4-10 LOCK HEX NUT, GR A, ZP	4
12	2526-449	5/8FLATWASHER1/4+- .010 THK, ZP	8
13	2550-709	1/2 WIRE 2-1/2ODX1-1/2IDX7-1/4COMP SPR	4
14	2570-126	3/4 X 10 EYEBOLT, ZP	4
16	2975-302	2975 SPRING BUSHING "PAINTED"	4
22	5000-318	PIVOT BUSHING	4
24	5000-322	SHIM WASHER ZP	4
26	5000-355	1-1/4 DISC HARROW BEARING, W209PPB5, HD ASS'Y	4
27	5000-378	SPACER BUSHING	8
28	5000-211A	ROLLER W.A., LH 76" (SHOWN)	1
29	5000-212A	ROLLER W.A., RH 76"	1
30	5000-254	ROLLER MOUNT 3 ROW	2
31	5000-256	OVER BEARING ARM 19" LH	2
32	5000-259	OVER BEARING ARM 19" RH	2

PART IDENTIFICATION

5000-026A

8 ROW JD DEVASTATOR



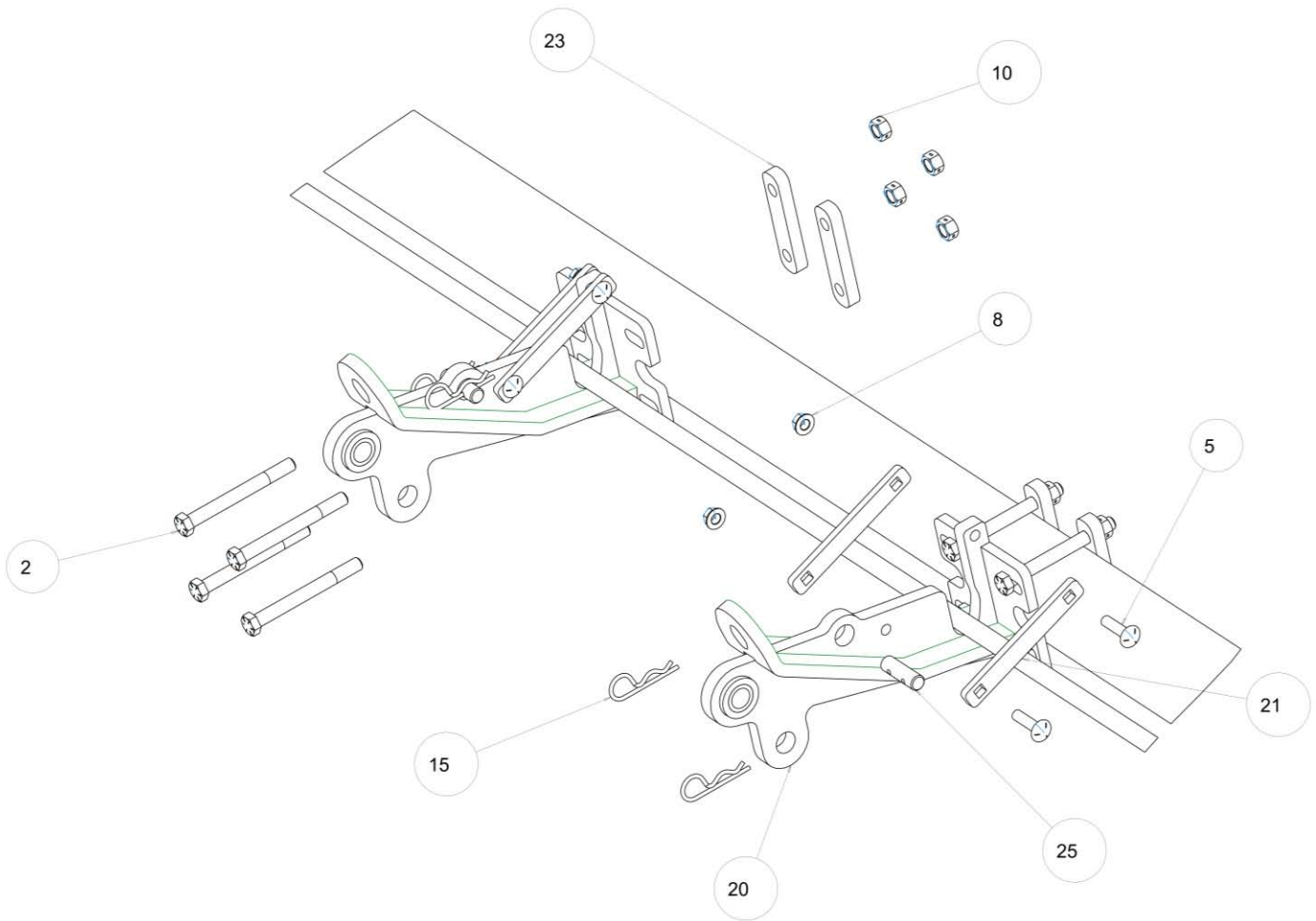
JOHN DEERE 608C, 843, 893

ITEM	PART #	DESCRIPTION	QTY
1	2502-325	5/8-11 X 3 HHCS GR 5 ZP	6
2	2502-352	5/8-11 X 6 HHCS GRADE 8 ZYD	24
3	2502-353	1/2-13 X 2 1/2HHCS GR8 ZYD	18
4	2502-365	1/2-13 X 3-3/4 HHCS GR5 YD	12
5	2505-345	1/2-13 X 2 CAR BLT GR5 ZP	12
6	2510-121	5/8" DIA. SHLDR, 2-1/4" L SHLDR, 1/2-13	6
7	2520-357	1/2-13 LOCK HEX NUT, GR A, ZP	30
8	2520-361	1/2-13FLANGE WHZLCK HXNT, GR 5, ZP	12
9	2520-364	1/2-13 HEX LOCKNUT, JAM	6
10	2520-459	5/8-11 LOCK HEX NUT, GR A, ZP	30
11	2520-515	3/4-10 LOCK HEX NUT, GR A, ZP	6
12	2526-449	5/8FLATWASHER1/4+- .010 THK, ZP	12
13	2550-709	1/2 WIRE 2-1/2ODX1-1/2IDX7-1/4COMP SPR	6
14	2570-126	3/4 X 10 EYEBOLT, ZP	6
15	2570-465	7 GA. HAIRPIN COTTER ZP	12
16	2975-302	2975 SPRING BUSHING "PAINTED"	6
17	5000-136	SPRING AND ARM BOLT BAG	6
18	5000-138	SINGLE ARM BOLT BAG	6
19	5000-139	DEV MOUNT HW JD 3" X 4"	6
20	5000-202	MOUNT BRACKET W.A., SINGLE	6
21	5000-309	SUPPORT STRAP	12
22	5000-318	PIVOT BUSHING	6
23	5000-319	MOUNT STRAP 3"	12
24	5000-322	SHIM WASHER ZP	6
25	5000-323	LOCK UP PIN ZP.	6
26	5000-355	1-1/4 DISC HARROW BEARING, W209PPB5, HD ASS'Y	6
27	5000-378	SPACER BUSHING	12
28	5000-203A	ROLLER W.A. 48"	1
29	5000-211A	ROLLER W.A., LH 76"	1
31	5000-254	ROLLER MOUNT 3 ROW	2
32	5000-212A	ROLLER W.A., RH 76"	1
34	5000-255	ROLLER MOUNT W.A.,	1
35	5000-256	OVER BEARING ARM 19" LH	3
36	5000-259	OVER BEARING ARM 19" RH	3
37	2550-059	DEVASTATOR BEARING ONLY	6

PART IDENTIFICATION

5000-026A

8 ROW JD DEVASTATOR

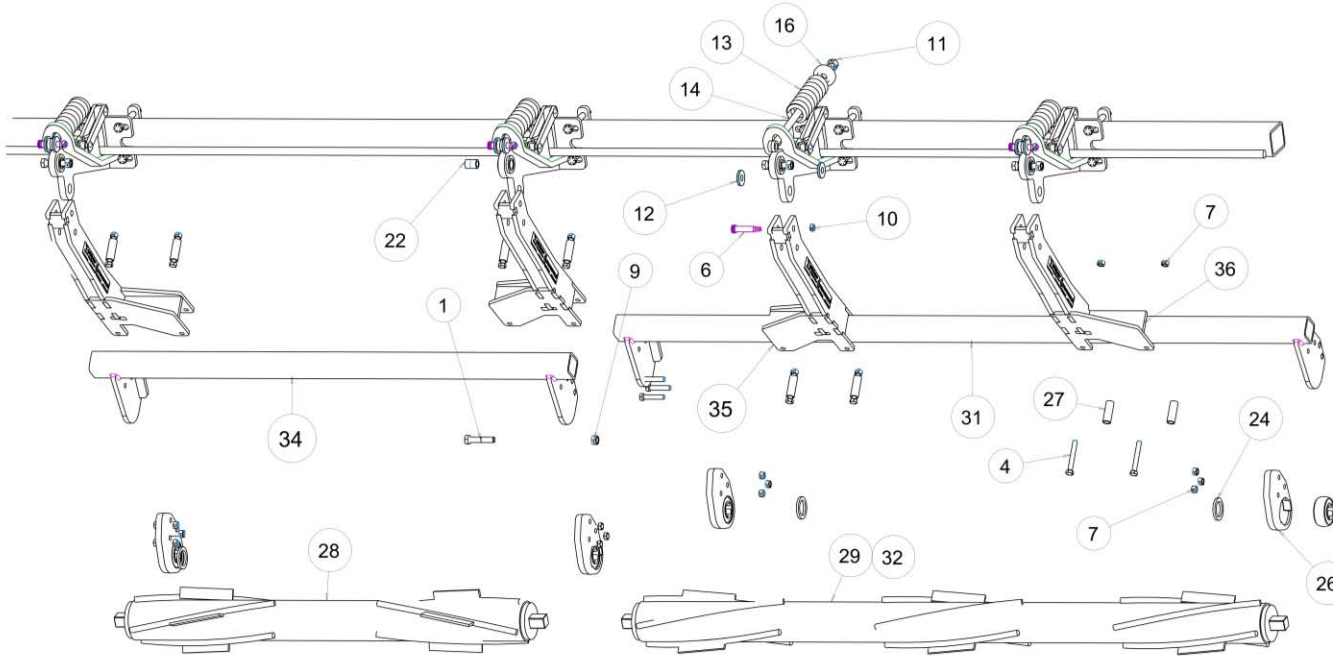


ITEM	PART #	DESCRIPTION	QTY
2	2502-352	5/8-11 X 6 HHCS GRADE 8 ZYD	24
5	2505-345	1/2-13 X 2 CAR BLT GR5 ZP	12
8	2520-361	1/2-13FLANGE WHZLCK HXNT, GR 5, ZP	12
10	2520-459	5/8-11 LOCK HEX NUT, GR A, ZP	24
15	2570-465	7 GA. HAIRPIN COTTER ZP	12
20	5000-202	MOUNT BRACKET W.A., SINGLE	6
21	5000-309	SUPPORT STRAP	12
23	5000-319	MOUNT STRAP 3"	12
25	5000-323	LOCK UP PIN ZP.	6

PART IDENTIFICATION

5000-026A

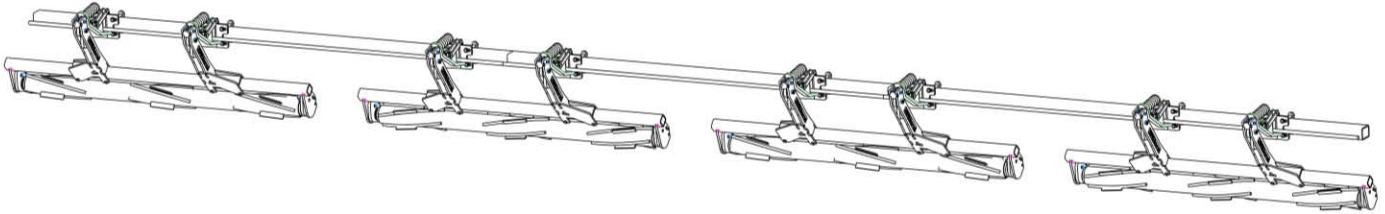
8 ROW JD DEVASTATOR



ITEM	PART #	DESCRIPTION	QTY
1	2502-325	5/8-11 X 3 HHCS GR 5 ZP	6
3	2502-353	1/2-13 X 2 1/2HHCS GR8 ZYD	18
4	2502-365	1/2-13 X 3-3/4 HHCS GR5 YD	12
6	2510-121	5/8" DIA. SHLDR, 2-1/4" L SHLDR, 1/2-13	6
7	2520-357	1/2-13 LOCK HEX NUT, GR A, ZP	30
9	2520-364	1/2-13 HEX LOCKNUT, JAM	6
10	2520-459	5/8-11 LOCK HEX NUT, GR A, ZP	6
11	2520-515	3/4-10 LOCK HEX NUT, GR A, ZP	6
12	2526-449	5/8FLATWASHER1/4+- .010 THK, ZP	12
13	2550-709	1/2 WIRE 2-1/2ODX1-1/2IDX7-1/4COMP SPR	6
14	2570-126	3/4 X 10 EYEBOLT, ZP	6
16	2975-302	2975 SPRING BUSHING "PAINTED"	6
22	5000-318	PIVOT BUSHING	6
24	5000-322	SHIM WASHER ZP	6
26	5000-355	1-1/4 DISC HARROW BEARING, W209PPB5, HD ASS'Y	6
27	5000-378	SPACER BUSHING	12
28	5000-203A	ROLLER W.A. 48"	1
29	5000-211A	ROLLER W.A., LH 76" (SHOWN)	1
31	5000-254	ROLLER MOUNT 3 ROW	2
32	5000-212A	ROLLER W.A., RH 76"	1
34	5000-255	ROLLER MOUNT W.A.,	1
35	5000-256	OVER BEARING ARM 19" LH	3
36	5000-259	OVER BEARING ARM 19" RH	3

PART IDENTIFICATION

5000-027A 12 ROW JD DEVASTATOR

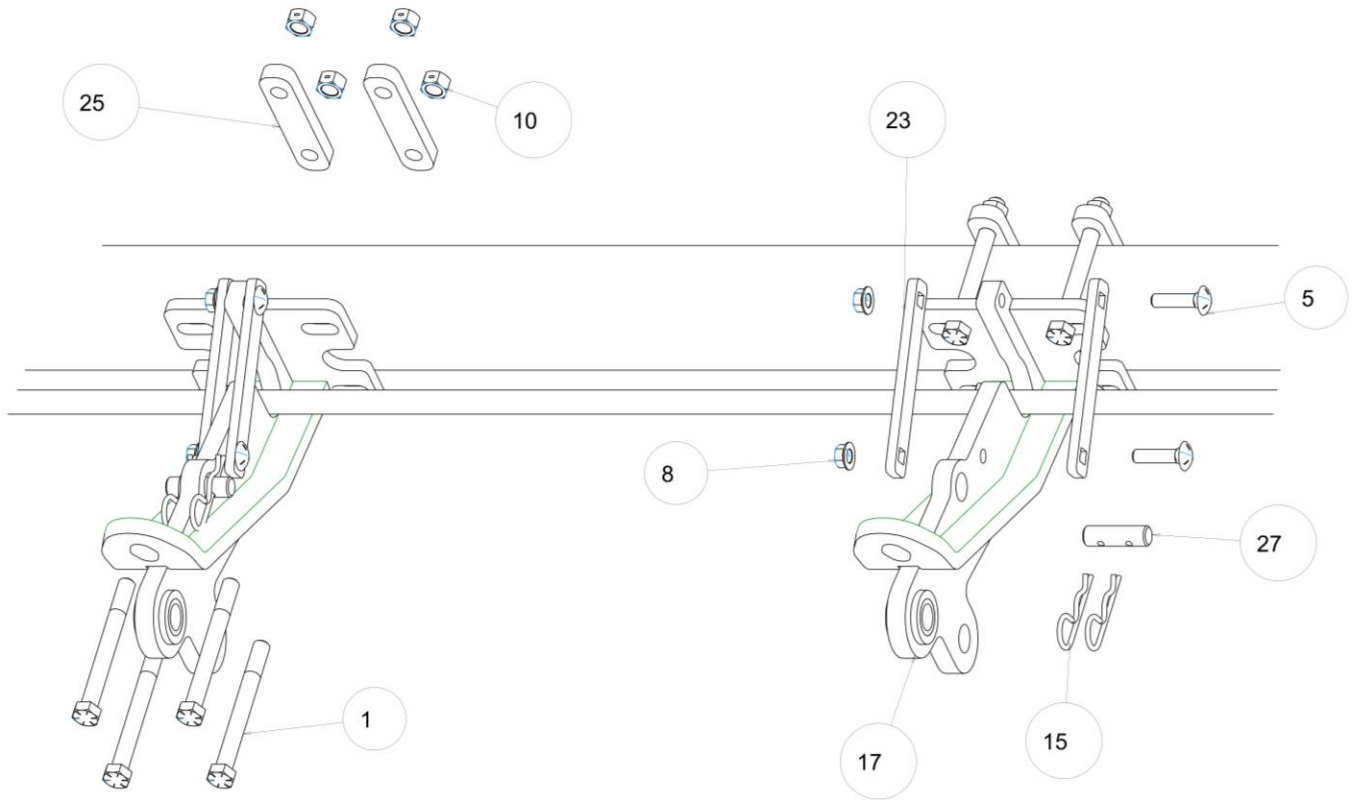


JOHN DEERE 612C, 1243, 1293

ITEM	PART #	DESCRIPTION	QTY
1	2502-325	5/8-11 X 3 HHCS GR 5 ZP	4
2	2502-352	5/8-11 X 6 HHCS GRADE 8 ZYD	32
3	2502-353	1/2-13 X 2 1/2HHCS GR8 ZYD	12
4	2502-365	1/2-13 X 3-3/4 HHCS GR5 YD	16
5	2505-345	1/2-13 X 2 CAR BLT GR5 ZP	16
6	2510-121	5/8" DIA. SHLDR, 2-1/4" L SHLDR, 1/2-13	4
7	2520-357	1/2-13 LOCK HEX NUT, GR A, ZP	28
8	2520-361	1/2-13FLANGE WHZLCK HXNT, GR 5, ZP	16
9	2520-364	1/2-13 HEX LOCKNUT, JAM	4
10	2520-459	5/8-11 LOCK HEX NUT, GR A, ZP	36
11	2520-515	3/4-10 LOCK HEX NUT, GR A, ZP	4
12	2526-449	5/8FLATWASHER1/4+- .010 THK, ZP	8
13	2550-709	1/2 WIRE 2-1/2ODX1-1/2IDX7-1/4COMP SPR	4
14	2570-126	3/4 X 10 EYEBOLT, ZP	4
15	2570-465	7 GA. HAIRPIN COTTER ZP	16
16	2975-302	2975 SPRING BUSHING "PAINTED"	4
17	5000-202	MOUNT BRACKET W.A., SINGLE	8
18	5000-211A	ROLLER W.A., LH 76"	2
19	5000-212A	ROLLER W.A., RH 76"	2
20	5000-254	ROLLER MOUNT 3 ROW	4
21	5000-256	OVER BEARING ARM 19" LH	4
22	5000-259	OVER BEARING ARM 19" RH	4
23	5000-309	SUPPORT STRAP	16
24	5000-318	PIVOT BUSHING	4
25	5000-319	MOUNT STRAP 3"	16
26	5000-322	SHIM WASHER ZP	4
27	5000-323	LOCK UP PIN ZP.	8
28	5000-355	1-1/4 DISC HARROW BEARING, W209PPB5, HD ASS'Y	8
29	5000-378	SPACER BUSHING	16
30	2550-059	DEVASTATOR BEARING ONLY (SERVICE PART)	8

PART IDENTIFICATION

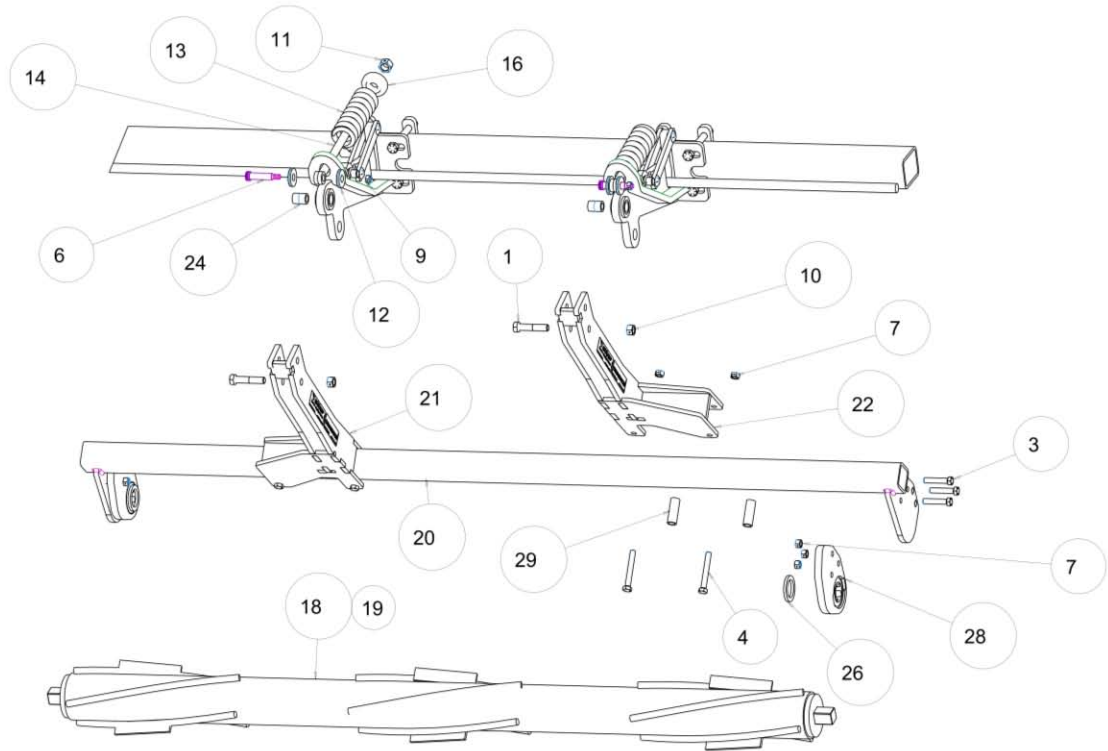
5000-027A
12 ROW JD DEVASTATOR



ITEM	PART #	DESCRIPTION	QTY
1	2502-352	5/8-11 X 6 HHCS GRADE 8 ZYD	32
5	2505-345	1/2-13 X 2 CAR BLT GR5 ZP	16
8	2520-361	1/2-13FLANGE WHZLCK HXNT, GR 5, ZP	16
10	2520-459	5/8-11 LOCK HEX NUT, GR A, ZP	32
15	2570-465	7 GA. HAIRPIN COTTER ZP	16
17	5000-202	MOUNT BRACKET W.A., SINGLE	8
23	5000-309	SUPPORT STRAP	16
25	5000-319	MOUNT STRAP 3"	16
27	5000-323	LOCK UP PIN ZP.	8

PART IDENTIFICATION

5000-027A 12 ROW JD DEVASTATOR

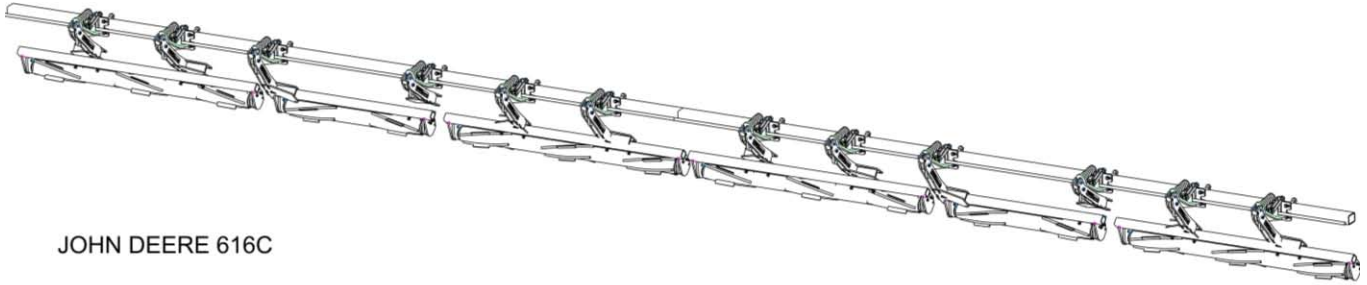


ITEM	PART #	DESCRIPTION	QTY
1	2502-325	5/8-11 X 3 HHCS GR 5 ZP	4
3	2502-353	1/2-13 X 2 1/2HHCS GR8 ZYD	12
4	2502-365	1/2-13 X 3-3/4 HHCS GR5 YD	16
6	2510-121	5/8" DIA. SHLDR, 2-1/4" L SHLDR, 1/2-13	4
7	2520-357	1/2-13 LOCK HEX NUT, GR A, ZP	28
9	2520-364	1/2-13 HEX LOCKNUT, JAM	4
10	2520-459	5/8-11 LOCK HEX NUT, GR A, ZP	36
11	2520-515	3/4-10 LOCK HEX NUT, GR A, ZP	4
12	2526-449	5/8FLATWASHER1/4+- .010 THK, ZP	8
13	2550-709	1/2 WIRE 2-1/2ODX1-1/2IDX7-1/4COMP SPR	4
14	2570-126	3/4 X 10 EYEBOLT, ZP	4
16	2975-302	2975 SPRING BUSHING "PAINTED"	4
18	5000-211A	ROLLER W.A., LH 76" (SHOWN)	2
19	5000-212A	ROLLER W.A., RH 76"	2
20	5000-254	ROLLER MOUNT 3 ROW	4
21	5000-256	OVER BEARING ARM 19" LH	4
22	5000-259	OVER BEARING ARM 19" RH	4
24	5000-318	PIVOT BUSHING	4
26	5000-322	SHIM WASHER ZP	4
28	5000-355	1-1/4 DISC HARROW BEARING, W209PPB5, HD ASS'Y	8
29	5000-378	SPACER BUSHING	16

PART IDENTIFICATION

5000-028A

16 ROW JD DEVASTATOR



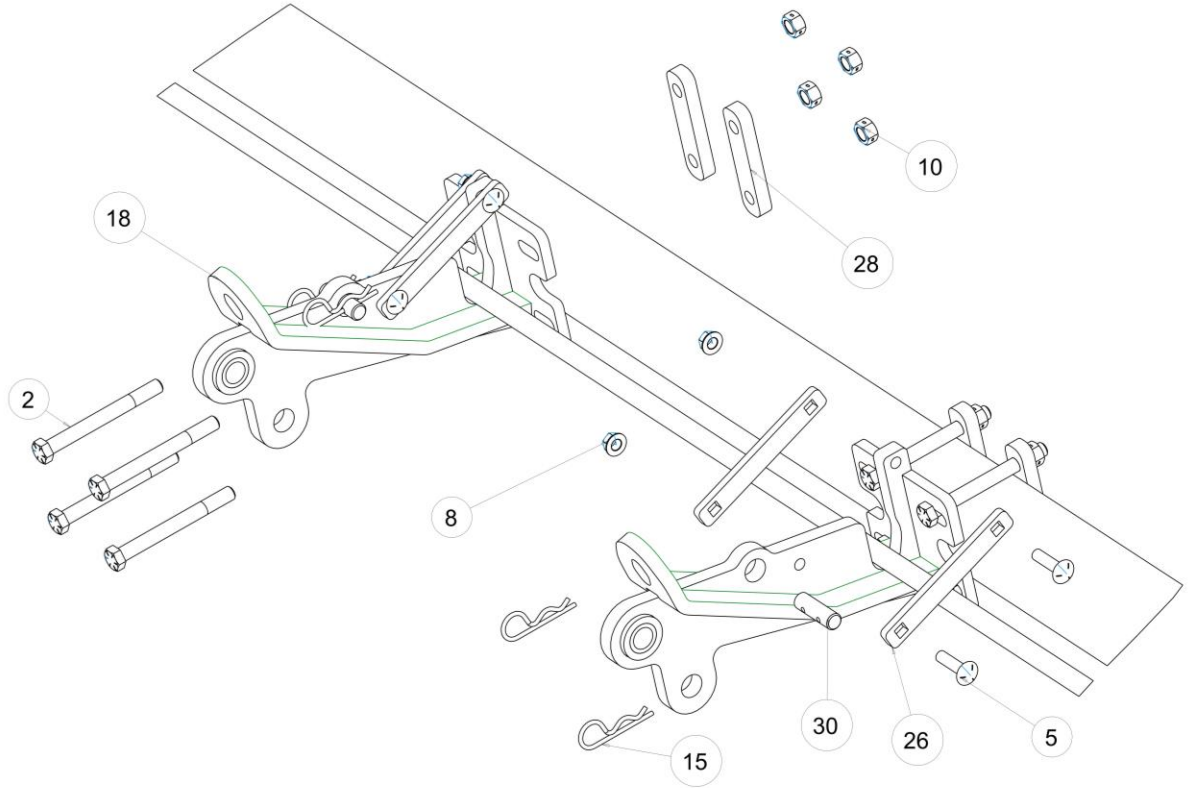
JOHN DEERE 616C

ITEM	PART #	DESCRIPTION	QTY
1	2502-325	5/8-11 X 3 HHCS GR 5 ZP	12
2	2502-352	5/8-11 X 6 HHCS GRADE 8 ZYD	48
3	2502-353	1/2-13 X 2 1/2HHCS GR8 ZYD	36
4	2502-365	1/2-13 X 3-3/4 HHCS GR5 YD	24
5	2505-345	1/2-13 X 2 CAR BLT GR5 ZP	24
6	2510-121	5/8" DIA. SHLDR, 2-1/4" L SHLDR, 1/2-13	12
7	2520-357	1/2-13 LOCK HEX NUT, GR A, ZP	60
8	2520-361	1/2-13FLANGE WHZLCK HXNT, GR 5, ZP	24
9	2520-364	1/2-13 HEX LOCKNUT, JAM	12
10	2520-459	5/8-11 LOCK HEX NUT, GR A, ZP	60
11	2520-515	3/4-10 LOCK HEX NUT, GR A, ZP	12
12	2526-449	5/8FLATWASHER1/4+- .010 THK, ZP	24
13	2550-709	1/2 WIRE 2-1/2ODX1-1/2IDX7-1/4COMP SPR	12
14	2570-126	3/4 X 10 EYEBOLT, ZP	12
15	2570-465	7 GA. HAIRPIN COTTER ZP	24
16	2975-302	2975 SPRING BUSHING "PAINTED"	12
17	5000-139	DEV MOUNT HW JD 3" X 4"	12
18	5000-202	MOUNT BRACKET W.A., SINGLE	12
19	5000-203A	ROLLER W.A. 48"	2
20	5000-211A	ROLLER W.A., LH 76"	2
21	5000-212A	ROLLER W.A., RH 76"	2
22	5000-254	ROLLER MOUNT 3 ROW	4
23	5000-255	ROLLER MOUNT W.A.,	2
24	5000-256	OVER BEARING ARM 19" LH	6
25	5000-259	OVER BEARING ARM 19" RH	6
26	5000-309	SUPPORT STRAP	24
27	5000-318	PIVOT BUSHING	12
28	5000-319	MOUNT STRAP 3"	24
29	5000-322	SHIM WASHER ZP	12
30	5000-323	LOCK UP PIN ZP.	12
31	5000-355	1-1/4 DISC HARROW BEARING, W209PPB5, HD ASS'Y	12
32	5000-378	SPACER BUSHING	24
33	2550-059	DEVASTATOR BEARING ONLY (SERVICE PART)	12

PART IDENTIFICATION

5000-028A

16 ROW JD DEVASTATOR

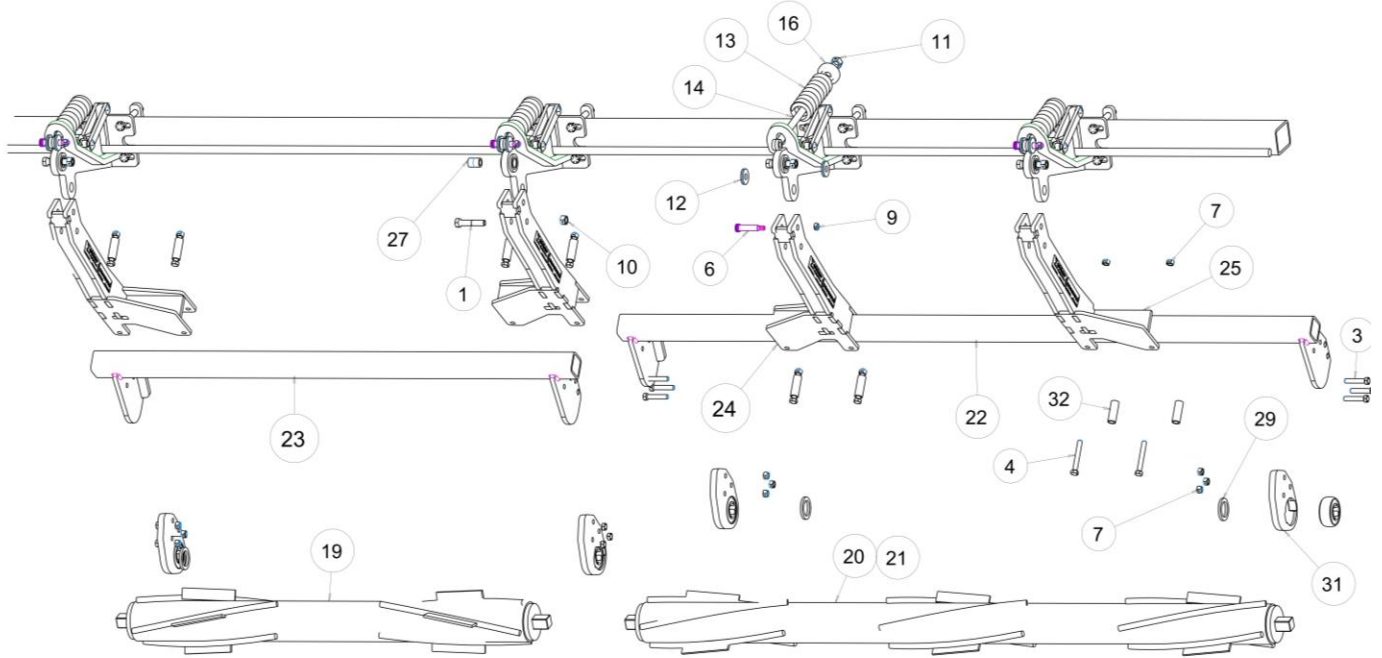


ITEM	PART #	DESCRIPTION	QTY
2	2502-352	5/8-11 X 6 HHCS GRADE 8 ZYD	48
5	2505-345	1/2-13 X 2 CAR BLT GR5 ZP	24
8	2520-361	1/2-13FLANGE WHZLCK HXNT, GR 5, ZP	24
10	2520-459	5/8-11 LOCK HEX NUT, GR A, ZP	60
15	2570-465	7 GA. HAIRPIN COTTER ZP	24
18	5000-202	MOUNT BRACKET W.A., SINGLE	12
26	5000-309	SUPPORT STRAP	24
28	5000-319	MOUNT STRAP 3"	24
30	5000-323	LOCK UP PIN ZP.	12

PART IDENTIFICATION

5000-028A

16 ROW JD DEVASTATOR

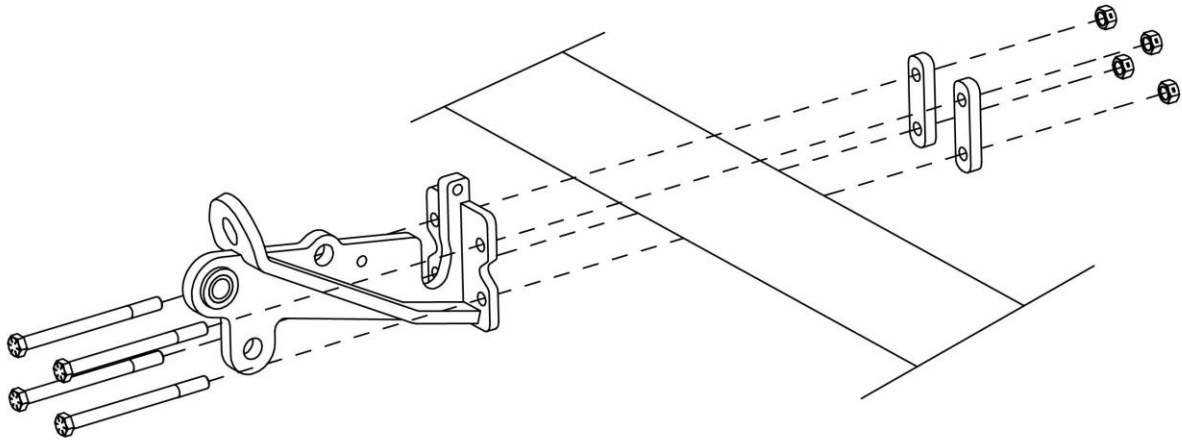


ITEM	PART #	DESCRIPTION	QTY
1	2502-325	5/8-11 X 3 HHCS GR 5 ZP	12
3	2502-353	1/2-13 X 2 1/2HHCS GR8 ZYD	36
4	2502-365	1/2-13 X 3-3/4 HHCS GR5 YD	24
6	2510-121	5/8" DIA. SHLDR, 2-1/4" L SHLDR, 1/2-13	12
7	2520-357	1/2-13 LOCK HEX NUT, GR A, ZP	60
9	2520-364	1/2-13 HEX LOCKNUT, JAM	12
10	2520-459	5/8-11 LOCK HEX NUT, GR A, ZP	12
11	2520-515	3/4-10 LOCK HEX NUT, GR A, ZP	12
12	2526-449	5/8FLATWASHER1/4+- .010 THK, ZP	24
13	2550-709	1/2 WIRE 2-1/2ODX1-1/2IDX7-1/4COMP SPR	12
14	2570-126	3/4 X 10 EYEBOLT, ZP	12
16	2975-302	2975 SPRING BUSHING "PAINTED"	12
19	5000-203A	ROLLER W.A. 48"	2
20	5000-211A	ROLLER W.A., LH 76"	2
21	5000-212A	ROLLER W.A., RH 76"	2
22	5000-254	ROLLER MOUNT 3 ROW	4
23	5000-255	ROLLER MOUNT W.A.,	2
24	5000-256	OVER BEARING ARM 19" LH	6
25	5000-259	OVER BEARING ARM 19" RH	6
27	5000-318	PIVOT BUSHING	12
29	5000-322	SHIM WASHER ZP	12
31	5000-355	1-1/4 DISC HARROW BEARING, W209PPB5, HD ASS'Y	12
32	5000-378	SPACER BUSHING	24

ASSEMBLY INSTRUCTIONS

STEP 1. ATTACH THE 5000-202 MOUNT BRACKETS TO THE FRAME USING THE 5/8" X 6" BOLTS, CLAMPS AND LOCK HEX NUTS.

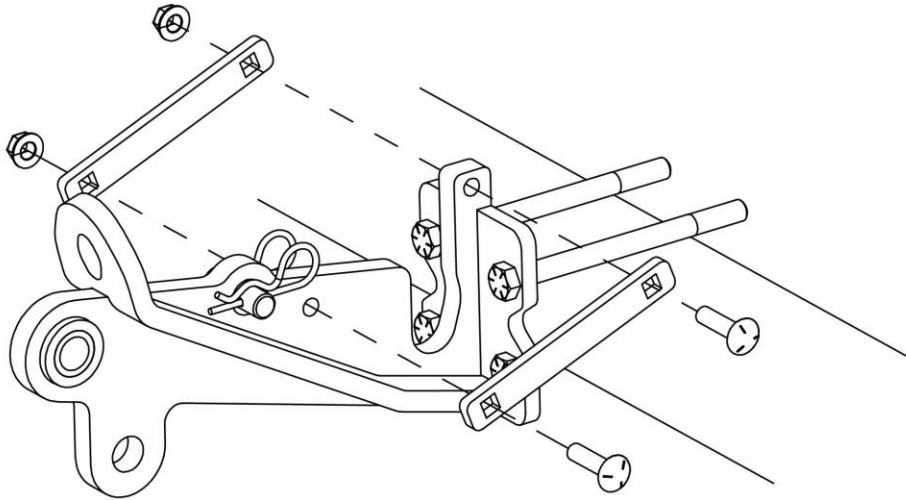
NOTE: DO NOT FULLY TIGHTEN HARDWARE UNTIL THE PIVOT ARMS ARE INSTALLED AT STEP 4.



I823-5000-026-001

ASSEMBLY INSTRUCTIONS

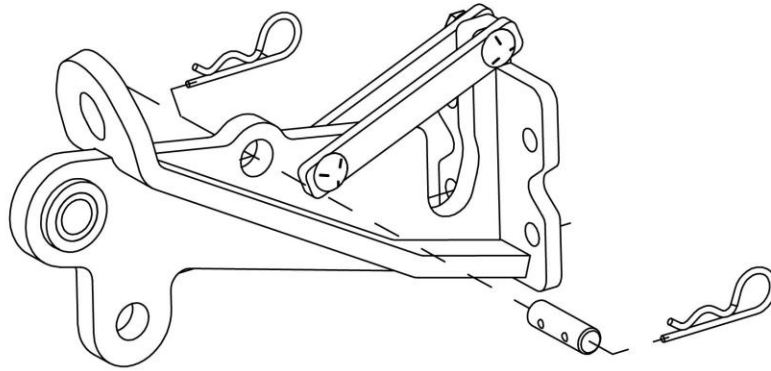
STEP 2. ATTACH THE 5000-309 SUPPORT STRAPS USING THE 1/2" X 2 CARRIAGE BOLTS AND FLANGE LOCK NUTS.



I823-5000-022-002

ASSEMBLY INSTRUCTIONS

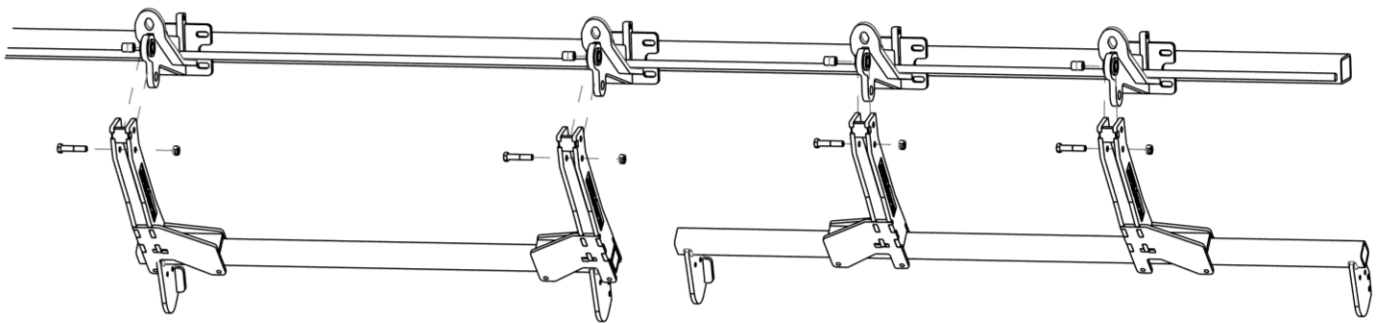
STEP 3. INSTALL THE 5000-323 LOCK UP PIN IN THE STORAGE LOCATION ON THE MOUNT BRACKETS SECURE WITH THE HAIRPIN CLIPS.



I823-5000-022-003

ASSEMBLY INSTRUCTIONS

STEP 4. ATTACH THE PIVOT ARMS TO THE MOUNT BRACKETS USING THE 5/8" X 3 BOLTS, PIVOT BUSHINGS, AND LOCK HEX NUTS. FULLY TIGHTEN ALL THE HARDWARE AT THIS TIME.



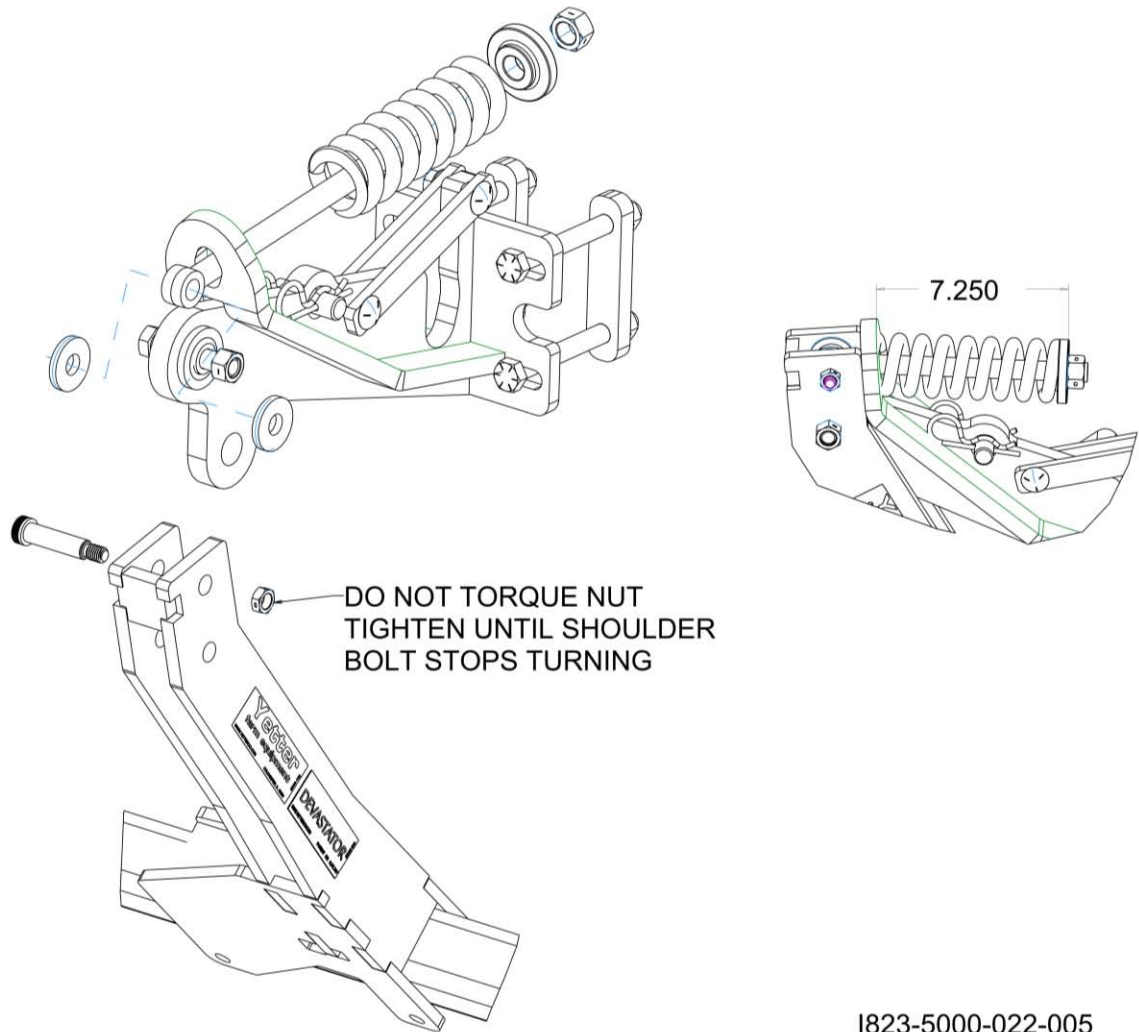
1823-5000-026-002

ASSEMBLY INSTRUCTIONS

STEP 5. INSTALL THE PUSH RODS INTO THE MOUNT BRACKETS THEN ATTACH TO THE PIVOT ARMS WITH THE 5/8" SHOULDER BOLTS, WASHERS AND 1/2" JAM LOCK HEX NUTS.

NOTE: THE WASHERS ARE INSTALLED ON EACH SIDE OF THE "EYE" OF THE PUSH ROD.

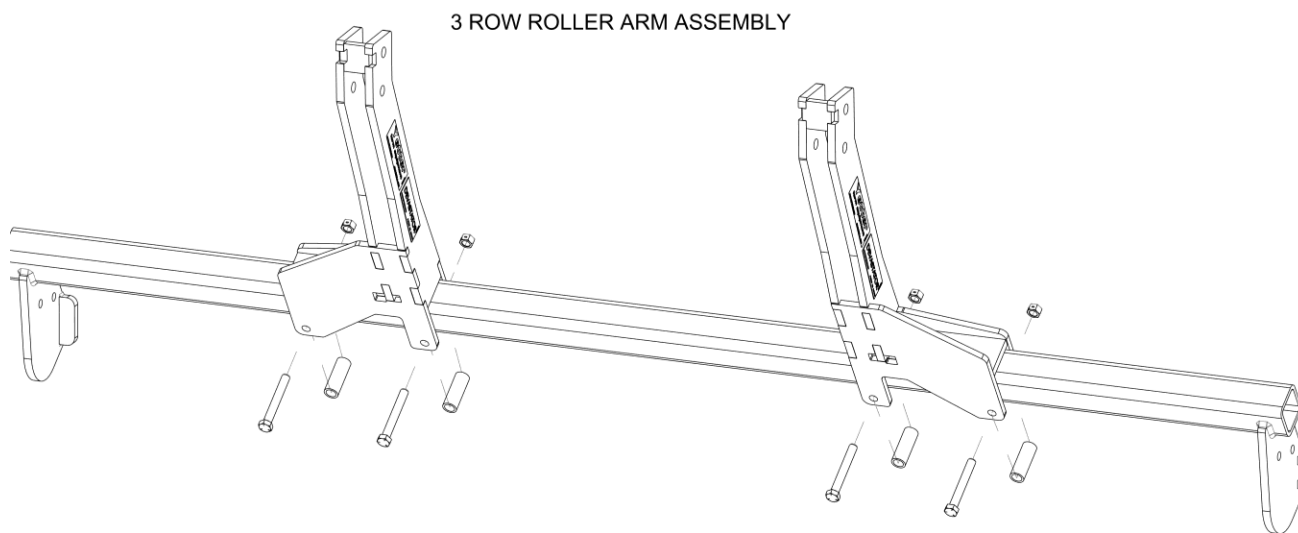
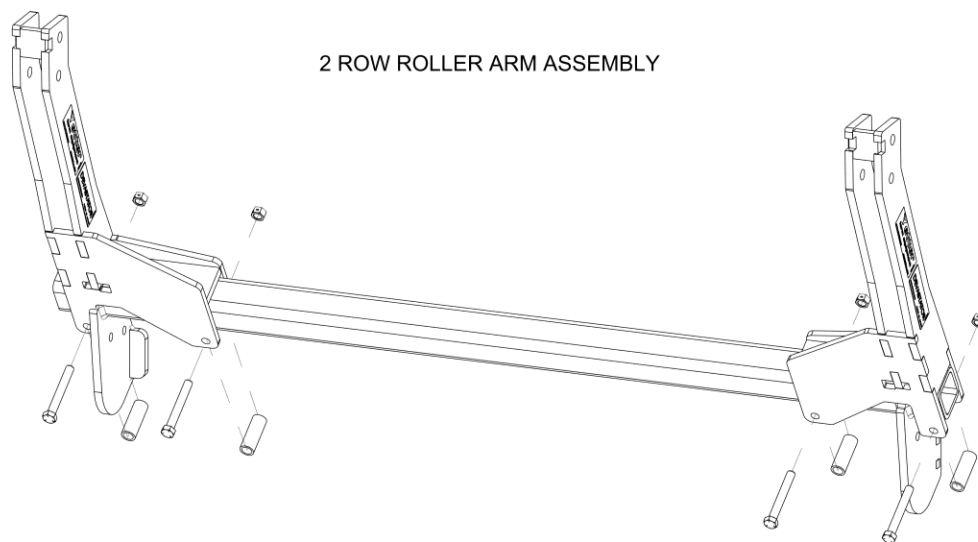
NOW INSTALL THE COMPRESSION SPRINGS, SPRING BUSHINGS AND 3/4" LOCK HEX NUTS.



1823-5000-022-005

ASSEMBLY INSTRUCTIONS

STEP 6. ATTACH THE ROLLER MOUNT TO THE PIVOT ARMS THEN INSTALL THE 1/2" X 3-3/4" BOLTS, SPACERS AND LOCK NUTS. SLIDE THE ROLLER MOUNT SIDE TO SIDE TO CLEAR THE END OF THE CORN HEAD. FULL TIGHTEN HARDWARE.

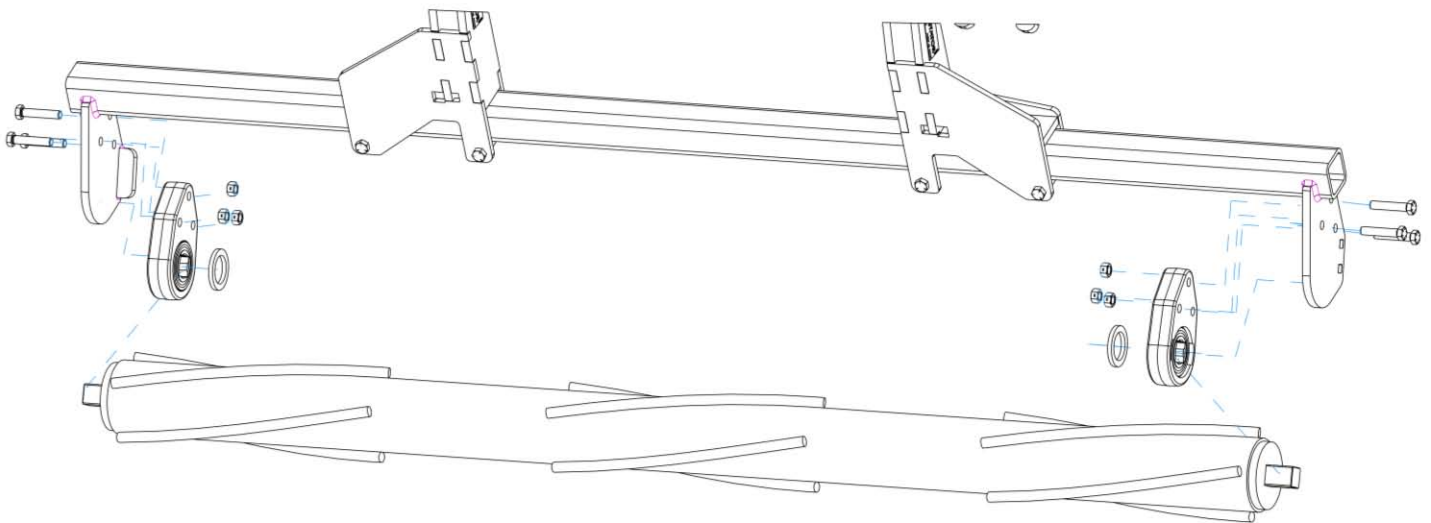


ASSEMBLY INSTRUCTIONS

STEP 7. INSTALL THE SHIMS AND BEARINGS ONTO THE ROLLERS.

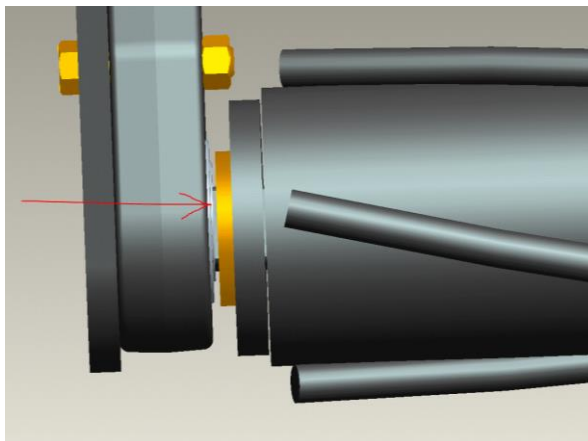
NOTE: THE EXTENDED RACE ON THE BEARING WILL FACE TOWARD THE ROLLER.

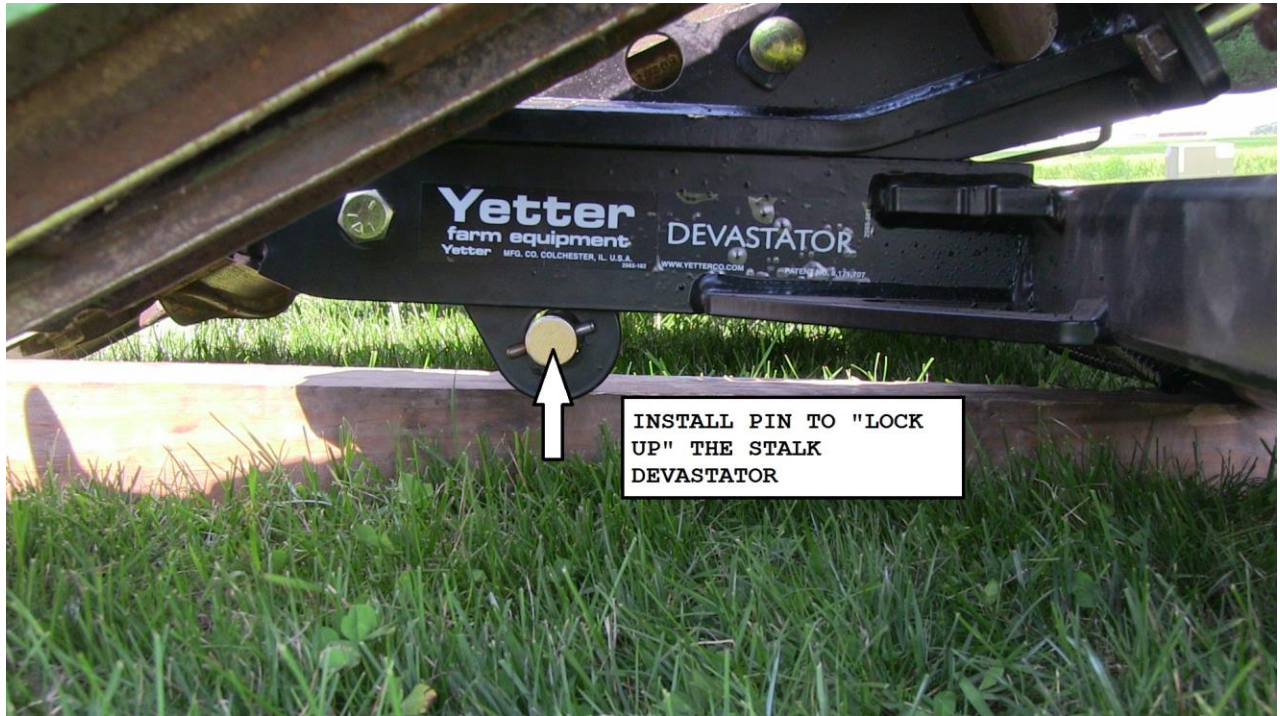
ATTACH THE BEARING/ROLLER ASSEMBLY TO THE PIVOT ARMS USING THE 1/2" X 2-1/2" BOLTS AND 1/2" LOCK HEX NUTS.



1823-5000-022-006

THE SIDE OF THE BEARING ASSEMBLY WHERE THE BEARING IS PROTRUDING MUST BE INSTALLED TOWARD THE ROLLER!





Our name Is getting known

Just a few years ago, Yetter products were sold primarily to the Midwest only. Then we embarked on a program of expansion and moved into the East, the South, the West and now north into Canada. We're even getting orders from as far away as Australia and Africa.

So, when you buy Yetter products . . .you're buying a name that's recognized. A name that's known and respected. A name that's become a part of American agriculture and has become synonymous with quality and satisfaction in the field of conservation tillage.

Thank you.

YETTER MANUFACTURING CO.

Colchester, IL 62326-0358 • 309/776-4111

Toll Free 800/447-5777

Fax 309/776-3222

Website: WWW.YETTERCO.COM

E-MAIL: INFO@YETTERCO.COM