



**5000 SERIES
STALK
DEVASTATOR
CORN STALK ROLLER
PATENTED
5000-023 & 5000-024
OPERATOR'S MANUAL
PART IDENTIFICATION
2565-784 – 08/2014**



YETTER MANUFACTURING CO.
FOUNDED 1930

Colchester, IL 62326-0358
Toll free: 800/447-5777
309/776-3222 (Fax)
Website: www.yetterco.com
E-mail: info@yetterco.com

YETTER

FOREWORD

You've just joined an exclusive but rapidly growing club.

For our part, we want to welcome you to the group and thank you for buying a Yetter product.

We hope your new Yetter products will help you achieve both goals-increase your productivity and increase your efficiency so that you may generate more profit.

This operator's manual has been designed into four major sections: Foreword, Safety Precautions, Installation Instructions and Parts Breakdown.



This **SAFETY ALERT SYMBOL** indicates important safety messages in the manual. When you see this symbol, be alert to the possibility of **PERSONAL INJURY** and carefully read the message that follows.

The word **NOTE** is used to convey information that is out of context with the manual text. It contains special information such as specifications, techniques and reference information of a supplementary nature.

The word **IMPORTANT** is used in the text when immediate damage will occur to the machine due

to improper technique or operation. Important will apply to the same information as specified by note only of an immediate and urgent nature.

It is the responsibility of the user to read the operator's manual and comply with the safe and correct operating procedure and to lubricate and maintain the product according to the maintenance schedule in the operator's manual.

The user is responsible for inspecting his machine and for having parts repaired or replaced when continued use of the product would cause damage or excessive wear to the other parts.

It is the user's responsibility to deliver his machine to the Yetter dealer who sold him the product for service or replacement of defective parts, which are covered by the warranty policy.

If you are unable to understand or follow the instructions provided in this publication, consult your local Yetter dealer or contact:

YETTER MANUFACTURING CO.

309/776-4111

800/447-5777

309/776-3222 (FAX)

Website: www.yetterco.com

E-mail: info@yetterco.com

WARRANTY

Yetter Manufacturing warrants all products manufactured and sold by it against defects in material. This warranty being expressly limited to replacement at the factory of such parts or products as shall appear to be defective after inspection. This warranty does not obligate the Company to bear cost of labor in replacement of parts. It is the policy of the Company to make improvements without incurring obligations to add them to any unit already sold. No warranty is made or authorized to be made, other than herein set forth. This warranty is in effect for one year after purchase.

DEALER: _____

Yetter Manufacturing warrants its own products only and cannot be responsible for damages to equipment on which mounted.



BE ALERT! YOUR SAFETY IS INVOLVED.



WATCH FOR THIS SYMBOL. IT POINTS OUT IMPORTANT SAFETY PRECAUTIONS. IT MEANS “ATTENTION---BECOME ALERT!”

It is your responsibility as an owner, operator, or supervisor to know and instruct everyone using this machine at the time of initial assignment and at least annually thereafter, of the proper operation, precautions, and work hazards which exist in the operation of the machine in accordance with OSHA regulations.

Safety Is No Accident

The following safety instructions, combined with common sense, will save your equipment from needless damage and the operator from unnecessary exposure to personal hazard. Pay special attention to the caution notes in the text. Review this manual at least once each year with new and/or experienced operators.



1. Read and understand the operator's manual before operating this machine. Failure to do so is considered a misuse of the equipment.
2. Make sure equipment is secure before operating.
3. Always keep children away from equipment when operating.
4. Make sure everyone that is not directly involved with the operation is out of the work area before beginning the operation.
5. Make sure all safety devices, shields, and guards are in place and are functional before beginning the operation.
6. Shut off power to adjust, service, or clean.
7. Keep hands, feet, and clothing away from moving parts. It is a good idea to remove all jewelry before starting the operation.
8. Visually inspect the machine periodically during operation for signs of excessive vibration, loose fasteners, and unusual noises.

PLEASE READ, VERY IMPORTANT



**SECURE CORN HEADER AGAINST
UNWANTED LOWERING BY APPLYING
THE LOCKING MECHANISM ON THE
HYDRAULIC CYLINDERS!**

1. ATTACH HEAD TO COMBINE, LOCK HEAD TO COMBINE
2. RAISE THE HEAD OFF THE GROUND AND ENGAGE THE SAFETY STOP ON THE FEEDER HOUSE CYLINDER.
3. TURN OFF COMBINE ENGINE AND REMOVE KEY.

**FOLLOW THE INSTRUCTIONS OF THE COMBINE
MANUFACTURER.**

PLEASE READ, VERY IMPORTANT



Subject to the size and weight of the corn header, one or two additional hydraulic cylinders may be required.

The combine manufacturer generally keeps the corresponding kits readily available for the dealer.

Subject to the design of the corn header and carrying capacity of the different combines, the steering axle may require the fitting of additional weights and the rear tires might need to be filled with ballast.

**FOLLOW THE INSTRUCTIONS OF THE COMBINE
MANUFACTURER.**

TABLE OF CONTENTS

INTRODUCTION.....	2
WARRANTY.....	2
SAFETY INFORMATION.....	2-5
TABLE OF CONTENTS.....	6
TORQUE.....	7
PARTS IDENTIFICATON	
5000-023.....	8-10
5000-024.....	11-13
ASSEMBLY INSTRUCTIONS.....	14-20
LOCK UP PIN.....	21

BOLT TORQUE

Mounting bolts and hardware

All hardware used on the 5000 Devastator is Grade 5 unless otherwise noted. Grade 5 cap screws are marked with three radial lines on the head. If hardware must be replaced, be sure to replace it with hardware of equal size, strength and thread type. Refer to the torque values chart when tightening hardware.



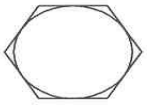
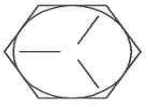

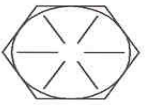
Important: Over tightening hardware can cause as much damage as when under tightening. Tightening hardware beyond the recommended range can reduce its shock load capacity.

The chart below is a guide for proper torque. Use it unless a specified torque is called out elsewhere in the manual.

Torque is the force you apply to the wrench handle or the cheater bar, times the length of the handle or bar.

Use a torque wrench whenever possible.

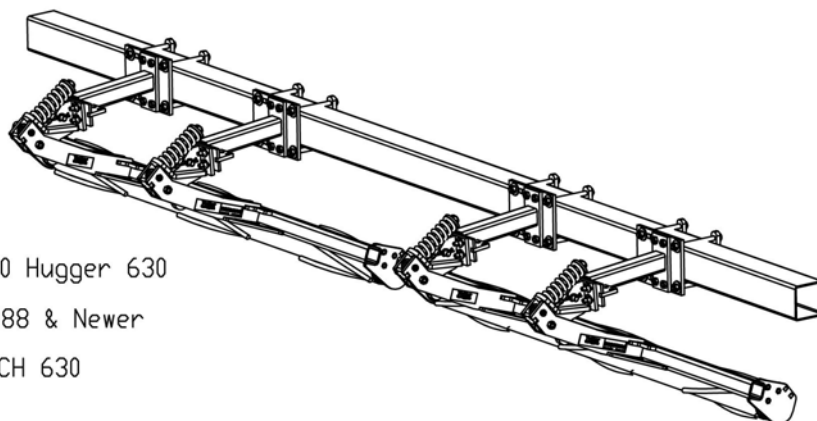
The following table shows torque in ft. lbs. for coarse thread hardware.

BOLT DIA. AND THREADS PER INCH		 OR 	
	GRADE 2	GRADE 5 A-325	GRADE 8
3/8-16	25	35	50
7/16-14	35	55	80
1/2-13	55	85	125
9/16-12	75	125	175
5/8-11	105	170	235
3/4-10	185	305	425
7/8-9	170	445	690
1-8	260	670	1030
1 1/8-7	365	900	1460
1 1/4-7	515	1275	2060
1 3/8-6	675	1675	2700
1 1/2-6	900	2150	3500
1 3/4-5	1410	3500	5600

PARTS IDENTIFICATION

5000-023

6 ROW STALK DEV AGCO



Gleaner 3000 Hugger 630

MF 3000 1988 & Newer

Challenger CH 630

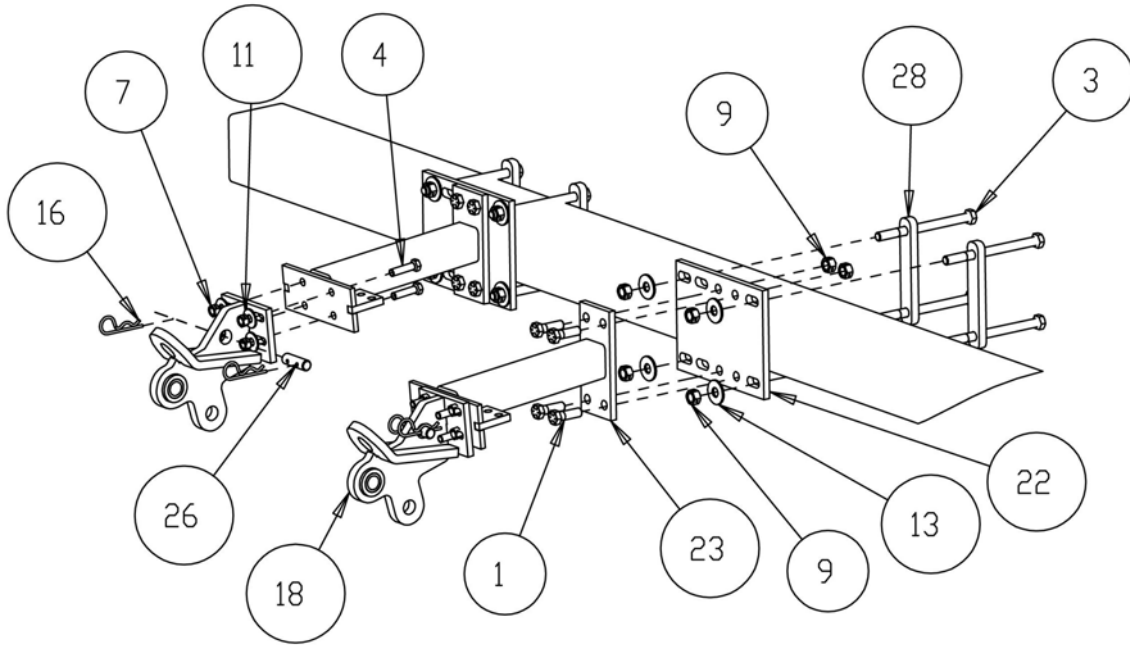
ITEM	PART #	DESCRIPTION	QTY
1	2502-322	5/8-11 x 2 HHCS GR 8	16
2	2502-325	5/8-11 X 3 HHCS GR 5 ZP	4
3	2502-342	5/8-11 X 8 HHCS GR 8 ZP	16
4	2502-350	1/2-13 X 2 HHCS, GR 8, ZP	16
5	2502-353	1/2-13 X 2 1/2HHCS GR8 ZYD	12
6	2510-121	5/8" DIA. SHLDR, 2-1/4" L SHLDR, 1/2-13	4
7	2520-357	1/2-13 LOCK HEX NUT ZP	28
8	2520-364	WU/ 1/2-13 HEX LOCKNUT JAM ZP	4
9	2520-459	5/8-11 LOCK HEX NUT ZP	36
10	2520-515	3/4-10 LOCK HEX NUT ZP	4
11	2526-351	1/2 STANDARD FLATWASHER ZP	16
12	2526-449	5/8ID X 1-3/4 OD X 1/4 WASHER	8
13	2526-451	5/8 STD FLATWASHER	16
14	2550-709	ZP2 WIRE 2-1/2ODX1-1/2IDX7-1/4COMP SPR	4
15	2570-126	3/4 X 10 EYEBOLT, ZP	4
16	2570-465	7 GA. HAIRPIN COTTER ZP	8
17	2975-302	2975 SPRING BUSHING "PAINTED"	4
18	5000-135	ARM MOUNT AGCO	4
19	5000-211	ROLLER W.A., LH 76"	1
20	5000-212	ROLLER W.A., RH 76"	1
21	5000-238	PIVOT ARM W.A., 3 ROW ROLLER, CENTERED	2
22	5000-247	PLATE, MOUNT ADJUSTMENT	4
23	5000-248	EXTENSION, AGCO MOUNT	4
24	5000-318	PIVOT BUSHING	4
25	5000-322	SHIM WASHER ZP	4
26	5000-323	LOCK UP PIN ZP.	4
27	5000-355	1-1/4 DISC HARROW BEARING, W209PPB5, HD ASS'Y	4
28	5000-365	MOUNT PLATE, 6"	8
29	2528-369	1.380 OD X 1.00 ID X 1.25 L, BEARING SLEEVE	4
30	5000-249	ARM AGCO MOUNT W.A.	4

I823-5000-023

PARTS IDENTIFICATION

5000-023

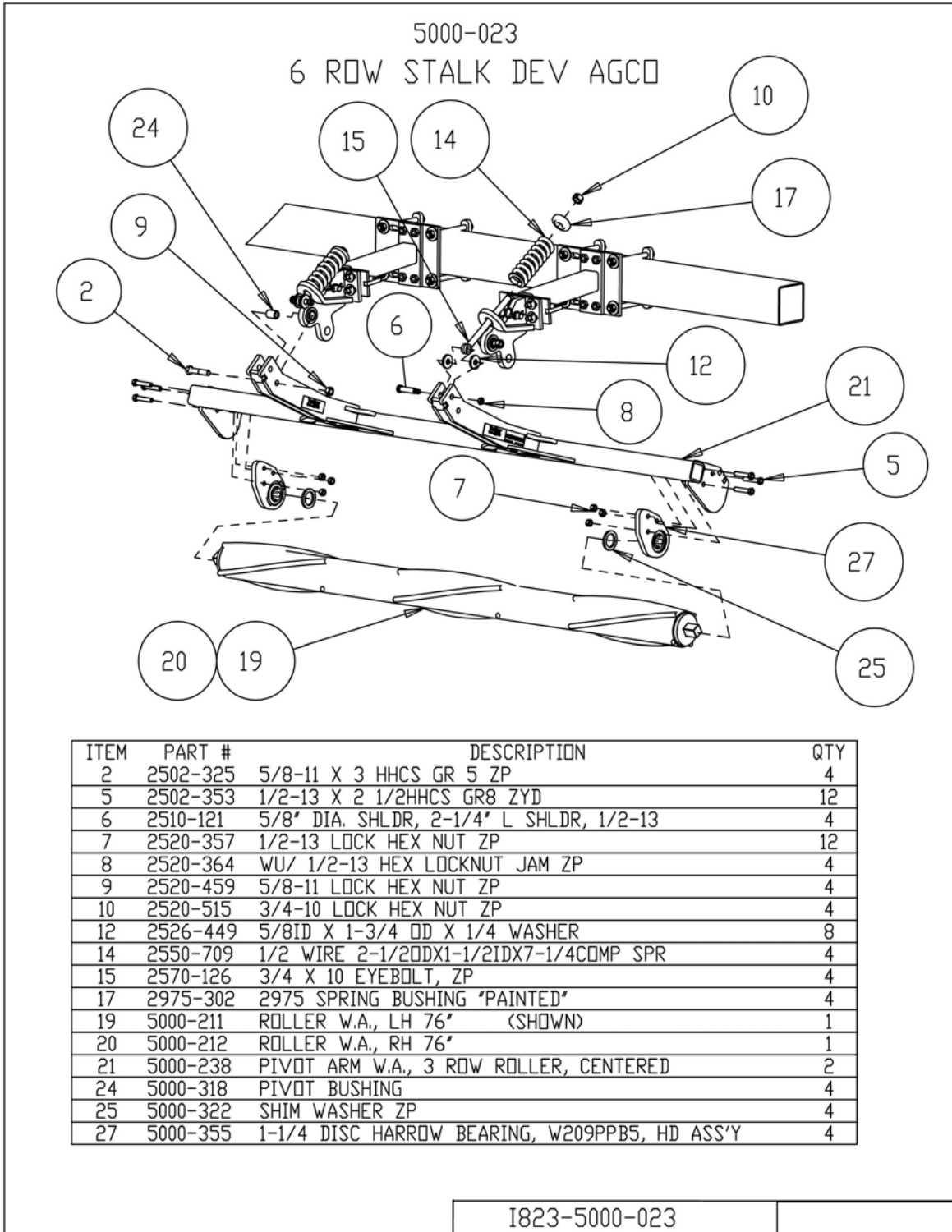
6 ROW STALK DEV AGCO



ITEM	PART #	DESCRIPTION	QTY
1	2502-322	5/8-11 x 2 HHCS GR 8	16
3	2502-342	5/8-11 X 8 HHCS GR 8 ZP	16
4	2502-350	1/2-13 X 2 HHCS, GR 8, ZP	16
7	2520-357	1/2-13 LOCK HEX NUT ZP	16
9	2520-459	5/8-11 LOCK HEX NUT ZP	32
11	2526-351	1/2 STANDARD FLATWASHER ZP	16
13	2526-451	5/8 STD FLATWASHER	16
16	2570-465	ZPGA. HAIRPIN CUTTER ZP	8
18	5000-135	ARM MOUNT AGCO	4
22	5000-247	PLATE, MOUNT ADJUSTMENT	4
23	5000-248	EXTENSION, AGCO MOUNT	4
26	5000-323	LOCK UP PIN ZP.	4
28	5000-365	MOUNT PLATE, 6'	8

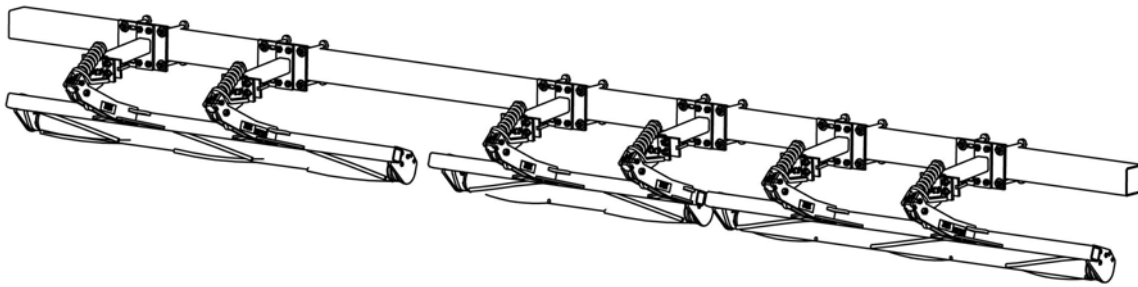
1823-5000-023

PARTS IDENTIFICATION



PARTS IDENTIFICATION

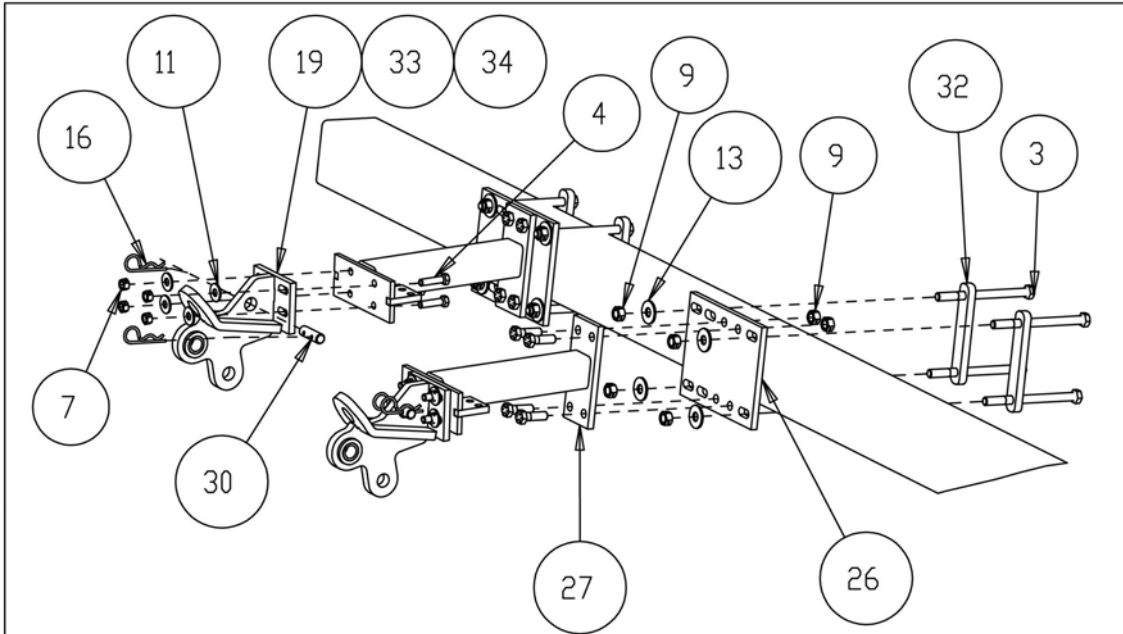
5000-024
8 ROW STALK DEV AGCO HEAD



ITEM	PART #	DESCRIPTION	QTY
1	2502-322	5/8-11 x 2 HHCS GR 8	24
2	2502-325	5/8-11 X 3 HHCS GR 5 ZP	6
3	2502-342	5/8-11 X 8 HHCS GR 8 ZP	24
4	2502-350	1/2-13 X 2 HHCS, GR 8, ZP	24
5	2502-353	1/2-13 X 2 1/2HHCS GR8 ZYD	18
6	2510-121	5/8" DIA. SHLDR, 2-1/4" L SHLDR, 1/2-13	6
7	2520-357	1/2-13 LOCK HEX NUT ZP	42
8	2520-364	WU/ 1/2-13 HEX LOCKNUT JAM ZP	6
9	2520-459	5/8-11 LOCK HEX NUT ZP	54
10	2520-515	3/4-10 LOCK HEX NUT ZP	6
11	2526-351	1/2 STANDARD FLATWASHER ZP	24
12	2526-449	5/8ID X 1-3/4 OD X 1/4 WASHER	12
13	2526-451	5/8 STD FLATWASHER	24
14	2550-709	ZP2 WIRE 2-1/2ODX1-1/2IDX7-1/4COMP SPR	6
15	2570-126	3/4 X 10 EYEBOLT, ZP	6
16	2570-465	7 GA. HAIRPIN COTTER ZP	12
17	2975-302	2975 SPRING BUSHING "PAINTED"	6
18	5000-134	MOUNT BAG	6
19	5000-135	ARM MOUNT AGCO	6
20	5000-136	SPRING AND ARM BOLT BAG	6
21	5000-203	ROLLER W.A. 48"	1
22	5000-211	ROLLER W.A., LH 76"	1
23	5000-212	ROLLER W.A., RH 76"	1
24	5000-234	PIVOT ARM W.A., R.H.	1
25	5000-238	PIVOT ARM W.A., 3 ROW ROLLER, CENTERED	2
26	5000-247	PLATE, MOUNT ADJUSTMENT	6
27	5000-248	EXTENSION, AGCO MOUNT	6
28	5000-318	PIVOT BUSHING	6
29	5000-322	SHIM WASHER ZP	6
30	5000-323	LOCK UP PIN ZP.	6
31	5000-355	1-1/4 DISC HARROW BEARING, W209PPB5, HD ASS'Y	6
32	5000-365	MOUNT PLATE, 6"	12
33	2528-369	1.380 OD X 1.00 ID X 1.25 L, BEARING SLEEVE	6
34	5000-249	ARM AGCO MOUNT W.A.	6

1823-5000-024

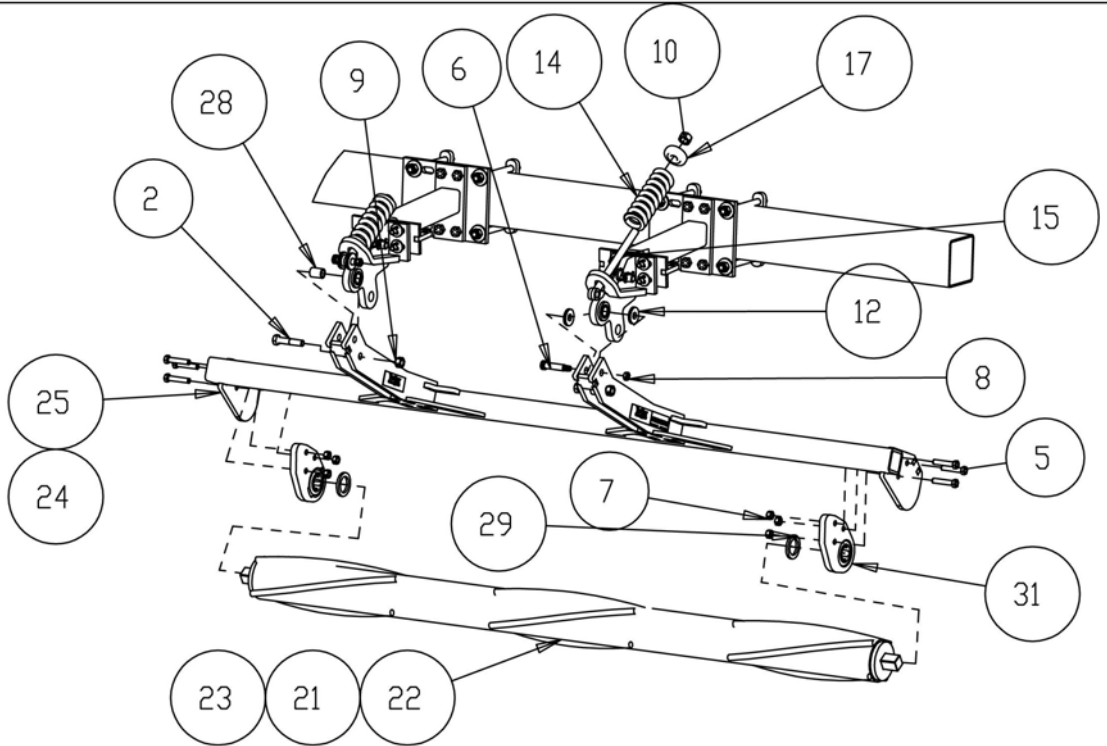
PARTS IDENTIFICATION



ITEM	PART #	DESCRIPTION	QTY
3	2502-342	5/8-11 X 8 HHCS GR 8 ZP	24
4	2502-350	1/2-13 X 2 HHCS, GR 8, ZP	24
7	2520-357	1/2-13 LOCK HEX NUT ZP	24
9	2520-459	5/8-11 LOCK HEX NUT ZP	48
11	2526-351	1/2 STANDARD FLATWASHER ZP	24
13	2526-451	5/8 STD FLATWASHER	24
16	2570-465	ZPGA. HAIRPIN COTTER ZP	12
19	5000-135	ARM MOUNT AGCO	6
26	5000-247	PLATE, MOUNT ADJUSTMENT	6
27	5000-248	EXTENSION, AGCO MOUNT	6
30	5000-323	LOCK UP PIN ZP.	6
32	5000-365	MOUNT PLATE, 6"	12
33	2528-369	1.380 OD X 1.00 ID X 1.25 L, BEARING SLEEVE	6
34	5000-249	ARM AGCO MOUNT W.A.	6

1823-5000-024

PARTS IDENTIFICATION

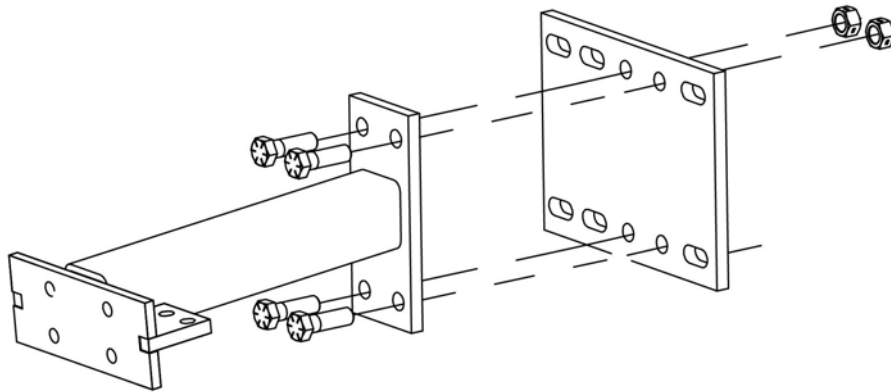


ITEM	PART #	DESCRIPTION	QTY
2	2502-325	5/8-11 X 3 HHCS GR 5 ZP	6
5	2502-353	1/2-13 X 2 1/2HHCS GR8 ZYD	18
6	2510-121	5/8" DIA. SHLDR, 2-1/4" L SHLDR, 1/2-13	6
7	2520-357	1/2-13 LOCK HEX NUT ZP	18
8	2520-364	WU/ 1/2-13 HEX LOCKNUT JAM ZP	6
9	2520-459	5/8-11 LOCK HEX NUT ZP	6
10	2520-515	3/4-10 LOCK HEX NUT ZP	6
12	2526-449	5/8ID X 1-3/4 DD X 1/4 WASHER	12
14	2550-709	1/2 WIRE 2-1/2ODX1-1/2IDX7-1/4COMP SPR	6
15	2570-126	3/4 X 10 EYEBOLT, ZP	6
17	2975-302	2975 SPRING BUSHING *PAINTED*	6
18	5000-134	MDUNT BAG	6
20	5000-136	SPRING AND ARM BOLT BAG	6
21	5000-203	ROLLER W.A. 48"	1
22	5000-211	ROLLER W.A., LH 76"	1
23	5000-212	ROLLER W.A., RH 76"	1
24	5000-234	PIVOT ARM W.A., R.H.	1
25	5000-238	PIVOT ARM W.A., 3 ROW ROLLER, CENTERED	2
28	5000-318	PIVOT BUSHING	6
29	5000-322	SHIM WASHER ZP	6
31	5000-355	1-1/4 DISC HARROW BEARING, W209PPB5, HD ASS'Y	6

I823-5000-024

ASSEMBLY INSTRUCTIONS

STEP 1. ATTACH THE 5000-248 EXTENSION MOUNT TO THE 5000-247 PLATE USING THE 5/8" X 2" BOLTS AND 5/8" LOCK HEX NUT.

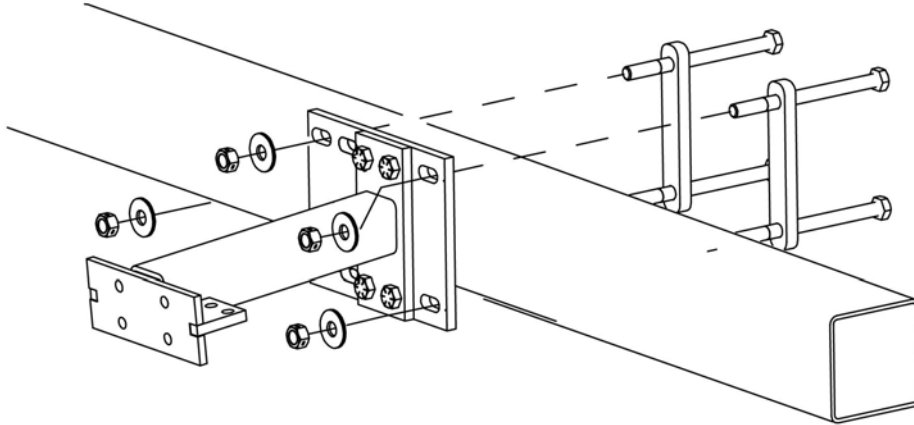


I823-5000-023-001

ASSEMBLY INSTRUCTIONS

STEP 2. INSTALL THE MOUNT ASSEMBLY TO THE CORN HEAD FRAME USING THE 5/8" X 8" BOLTS, CLAMP PLATES, FLAT WASHER AND 5/8" LOCK HEX NUTS.

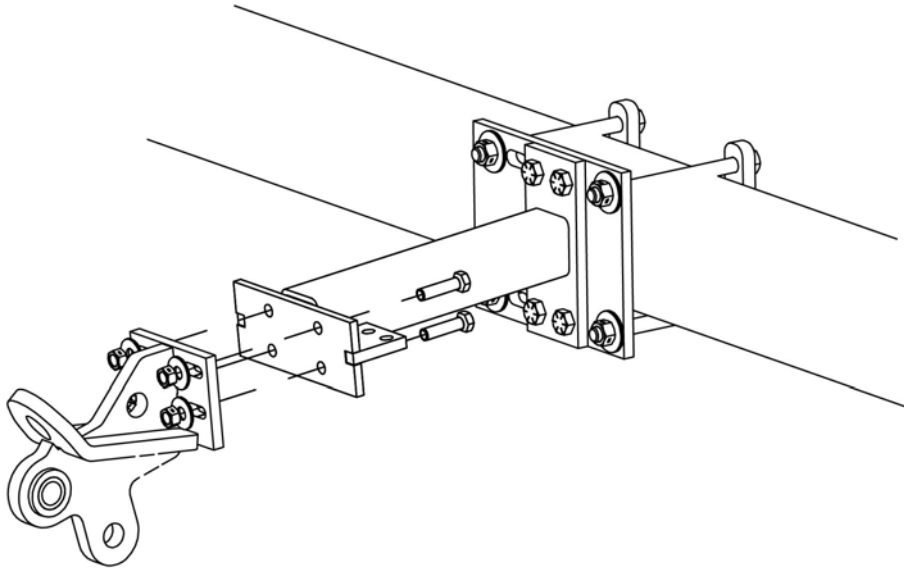
NOTE: DO NOT FULLY TIGHTEN HARDWARE UNTIL THE PIVOT ARMS ARE INSTALLED AT STEP 5.



1823-5000-023-002

ASSEMBLY INSTRUCTIONS

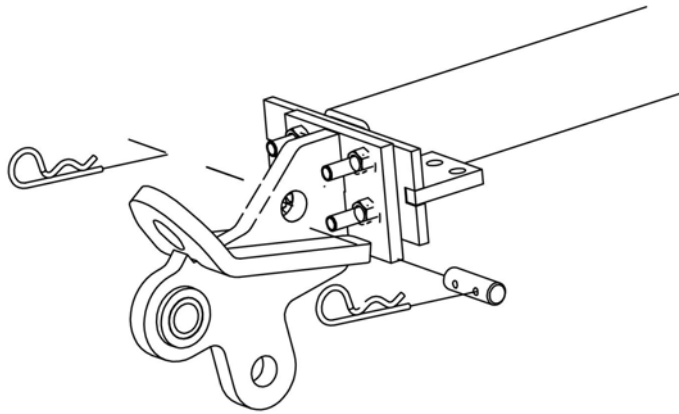
STEP 3. ATTACH THE 5000-135 ARM MOUNTS ON THE EXTENSION MOUNT BRACKETS USING THE 1/2" X 2" BOLTS, WASHERS, AND 1/2" LOCK HEX NUTS.



I823-5000-023-003

ASSEMBLY INSTRUCTIONS

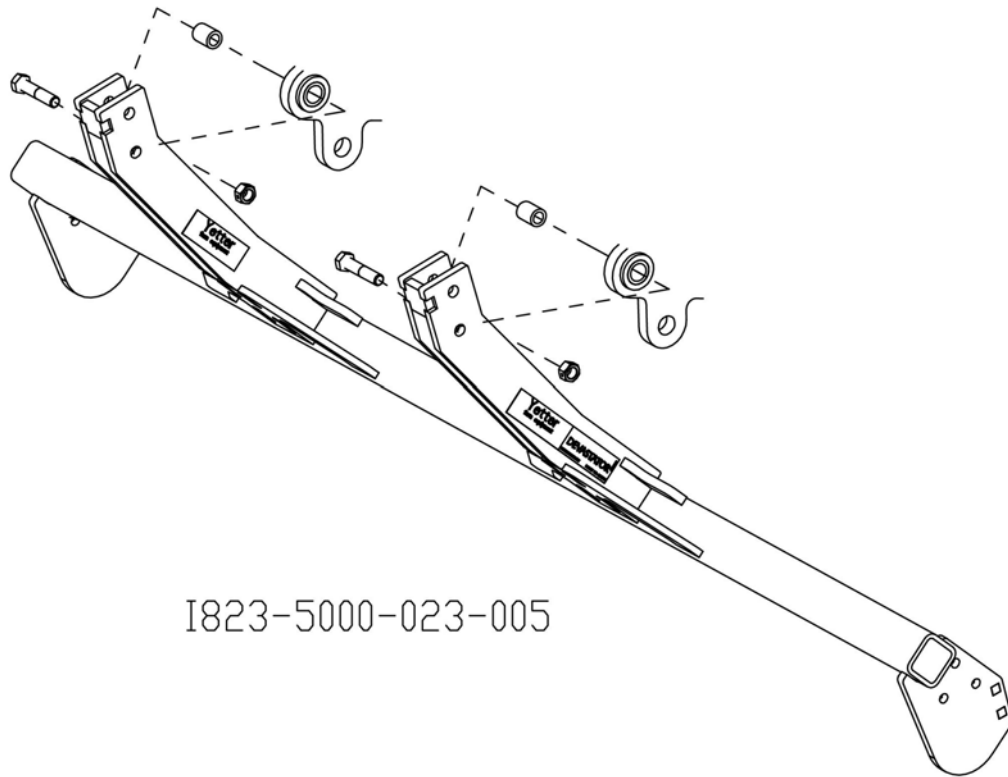
STEP 4. INSTALL THE 5000-323 LOCK UP PINS IN THE STORAGE LOCATION ON THE MOUNT ARM AND SECURE WITH THE HAIR PIN CLIPS.



I823-5000-023-004

ASSEMBLY INSTRUCTIONS

STEP 5. ATTACH THE 5000-238 PIVOT ARMS TO THE MOUNT BRACKETS USING 5/8" X 3" BOLTS, PIVOT BUSHINGS AND 5/8" LOCK HEX NUTS. FULLY TIGHTEN ALL THE HARDWARE AT THIS TIME.

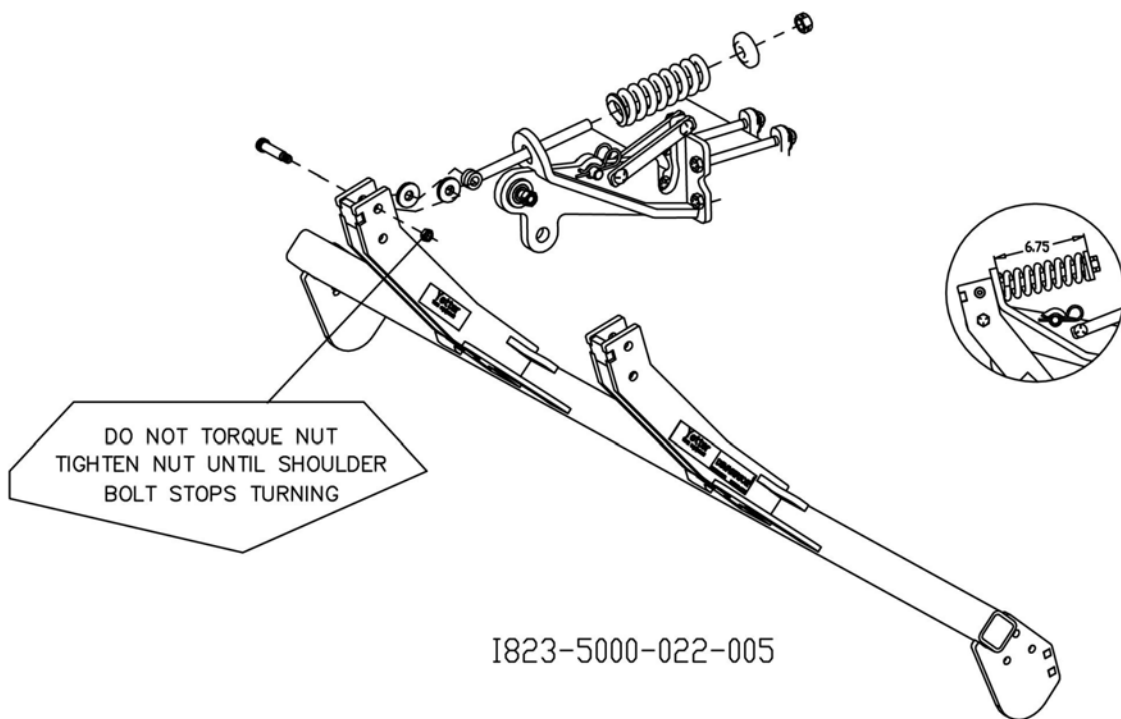


I823-5000-023-005

ASSEMBLY INSTRUCTIONS

STEP 6. INSTALL THE PUSH RODS INTO THE MOUNT BRACKETS THEN ATTACH TO THE PIVOT ARMS WITH THE 5/8" SHOULDER BOLTS, WASHERS AND 1/2" JAM LOCK HEX NUTS.

NOTE: THE WASHERS ARE INSTALLED ON EACH SIDE OF THE "EYE" OF THE PUSH ROD. NOW INSTALL THE COMPRESSION SPRINGS, SPRING BUSHINGS, AND 3/4" LOCK HEX NUTS.

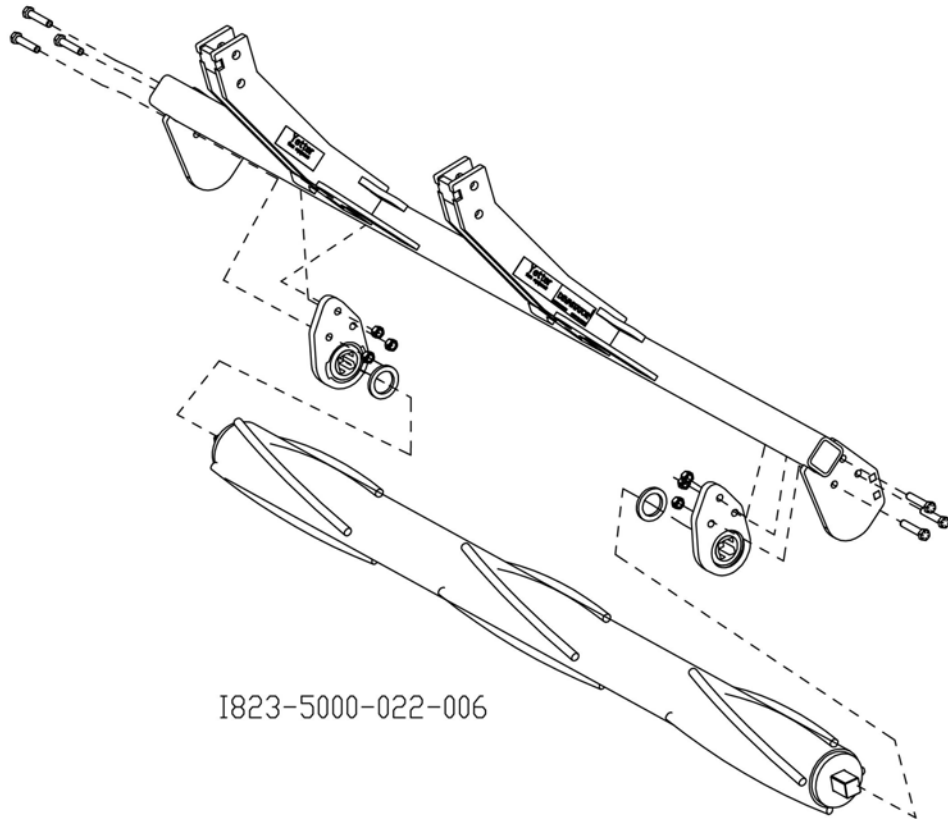


ASSEMBLY INSTRUCTIONS

STEP 7. INSTALL THE SHIMS AND BEARINGS ONTO THE ROLLERS.

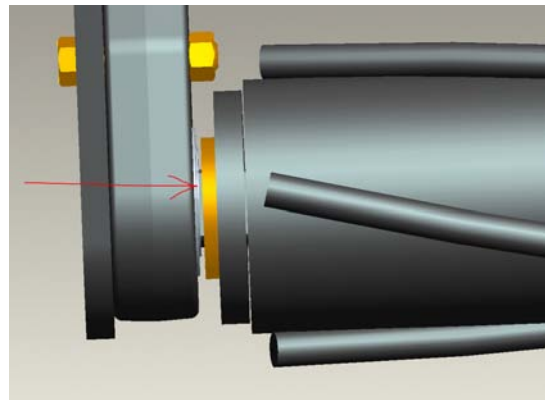
NOTE: THE EXTENDED RACE ON THE BEARING WILL FACE TOWARD THE ROLLER.

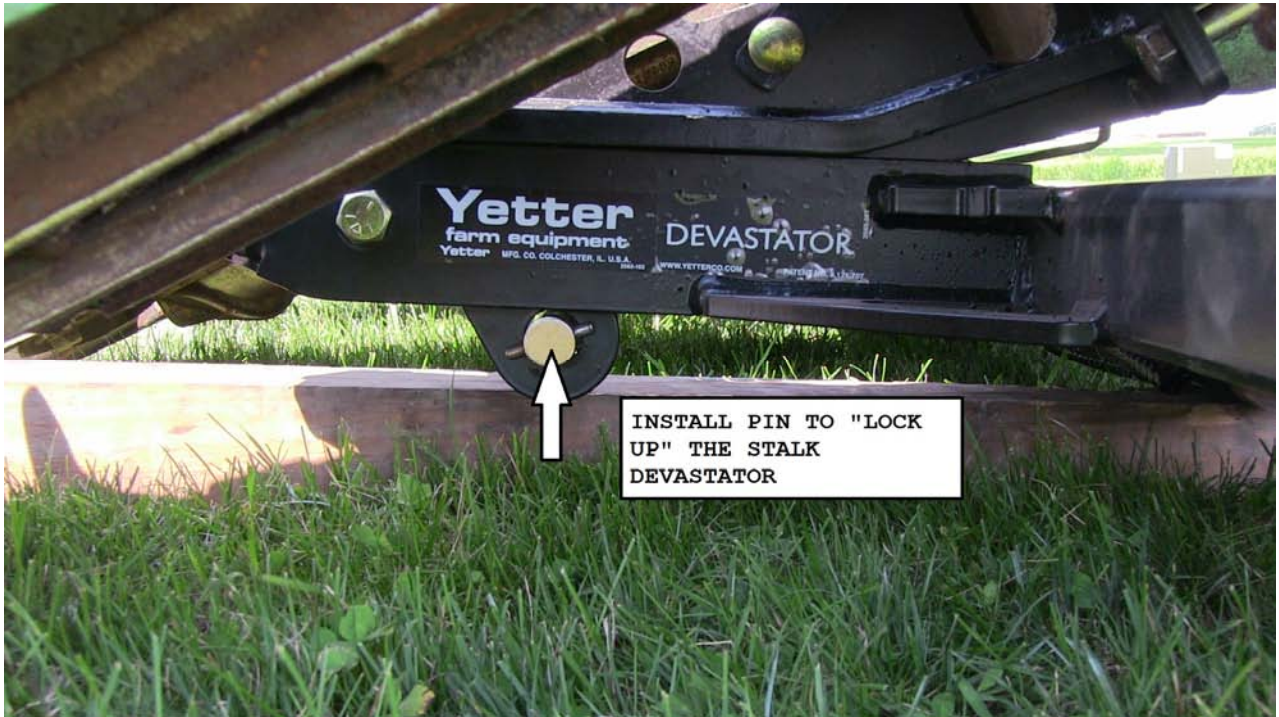
ATTACH THE BEARING/ROLLER ASSEMBLY TO THE PIVOT ARMS USING THE 1/2" X 2-1/2" BOLTS AND 1/2" LOCK HEX NUTS.



1823-5000-022-006

THE SIDE OF THE BEARING ASSEMBLY WHERE THE BEARING IS PROTRUDING MUST BE INSTALLED TOWARD THE ROLLER!





NOTES:

NOTES:

Our name Is getting known

Just a few years ago, Yetter products were sold primarily to the Midwest only. Then we embarked on a program of expansion and moved into the East, the South, the West and now north into Canada. We're even getting orders from as far away as Australia and Africa.

So, when you buy Yetter products . . .you're buying a name that's recognized. A name that's known and respected. A name that's become a part of American agriculture and has become synonymous with quality and satisfaction in the field of conservation tillage.

Thank you.

YETTER MANUFACTURING CO.

Colchester, IL 62326-0358 • 309/776-4111

Toll Free 800/447-5777

Fax 309/776-3222

Website: WWW.YETTERCO.COM

E-MAIL: INFO@YETTERCO.COM