

Yetter
... for land's sake

DOUBLE NO-TILL COULTER MANUAL

YETTER MANUFACTURING CO.
FOUNDED 1930

Colchester, IL 62326-0358

Toll free: 800/447-5777

309/776-3222 (Fax)

Website: www.yetterco.com

E-mail: info@yetterco.com

Yetter

FOREWORD

You've just joined an exclusive but rapidly growing club.

For our part, we want to welcome you to the group and thank you for buying a Yetter product.

We hope your new Yetter products will help you achieve both goals-increase your productivity and increase your efficiency so that you may generate more profit.

This operator's manual has been designed into four major sections: Foreword, Safety Precautions, Installation Instructions and Parts Breakdown.



This **SAFETY ALERT SYMBOL** indicates important safety messages in the manual. When you see this symbol, be alert to the possibility of **PERSONAL INJURY** and carefully read the message that follows.

The word **NOTE** is used to convey information that is out of context with the manual text. It contains special information such as specifications, techniques and reference information of a supplementary nature.

The word **IMPORTANT** is used in the text when immediate damage will occur to the machine due to improper technique or operation. Important will apply to the same information as specified by note

only of an immediate and urgent nature.

It is the responsibility of the user to read the operator's manual and comply with the safe and correct operating procedure and to lubricate and maintain the product according to the maintenance schedule in the operator's manual.

The user is responsible for inspecting his machine and for having parts repaired or replaced when continued use of the product would cause damage or excessive wear to the other parts.

It is the user's responsibility to deliver his machine to the Yetter dealer who sold him the product for service or replacement of defective parts, which are covered by the warranty policy.

If you are unable to understand or follow the instructions provided in this publication, consult your local Yetter dealer or contact:

YETTER MANUFACTURING CO.

309/776-4111

800/447-5777

309/776-3222 (FAX)

Website: www.yetterco.com

E-mail: info@yetterco.com

WARRANTY

Yetter Manufacturing warrants all products manufactured and sold by it against defects in material. This warranty being expressly limited to replacement at the factory of such parts or products as shall appear to be defective after inspection. This warranty does not obligate the Company to bear cost of labor in replacement of parts. It is the policy of the Company to make improvements without incurring obligations to add them to any unit already sold. No warranty is made or authorized to be made, other than herein set forth. This warranty is in effect for one year after purchase.

Dealer _____

Yetter Manufacturing warrants its own products only and cannot be responsible for damages to equipment on which mounted.

TABLE OF CONTENTS

FOREWORD.....	2
WARRANTY.....	2
SAFETY.....	4
YETTER MODEL DOUBLE NO-TILL COULTER.....	5
INSTALLATION.....	6
OPERATION.....	7
MAINTENANCE.....	7
PARTS IDENTIFICATION.....	8-13
TROUBLESHOOTING.....	14

SAFETY

A brief description of signal words that may be used in this manual:

CAUTION: Used as a general reminder of good safety practices or to direct attention to unsafe practices.

WARNING: Denotes a specific potential hazard.

DANGER: Denotes the most serious specific potential hazard.

SAFETY PRECAUTIONS

You can make your farm a safer place to live and work if you observe the safety precautions given. Study these precautions carefully and insist that they be followed by those working with you and for you.

Finally, remember this: an accident is usually caused by someone's carelessness, neglect or oversight.

! WARNING

Never clean, lubricate or adjust a machine that is in motion. Always lower or block the implement before performing service.

If machine must be serviced in the raised position, jack or block it up to prevent it from accidentally falling and injuring someone.

Do not allow riders on the tractor or implement.

Use speeds and caution dictated by the terrain being traversed. Do not operate on any slope steep enough to cause tipping or loss of control.

Be sure all personnel are clear of the immediate area before operating.

Read and understand the operator's manual and require all others persons who will operate the equipment to do the same.

Be familiar with all tractor and implement controls and be prepared to stop engine and implements quickly in an emergency.

! CAUTION

Consult your implement and tractor operator's manual for correct and safe operating practices.

Beware of towed implement width and allow safe clearance.

FAILURE TO HEED MAY RESULT IN PERSONAL INJURY OR DEATH

YETTER MODEL DOUBLE NO-TILL COULTER

BLADES

2571-164 - 14-5/8" Wavy Blade (8 Wave)
 2571-166 - 14-5/8" 25 M.W. Blade (25 Wave)
 2571-161 - 16" Ripple Blade
 2571-156 - 16" Wavy Blade (8 Wave)
 2571-162 - 16" Shallow-Wave Blade (13 Wave)

2571-172 - 16" Multi-Wave Blade (25 Wave)
 2571-167 - 17" Ripple Blade
 2571-154 - 18" Wavy Blade (8 Wave)
 2571-155 - 18" Shallow-Wave Blade (13 Wave)
 2571-179 - 18" Multi-Wave Blade (25 Wave)

CLAMPS

2990-154 - Clamp Kit, 2-1/2 Sq. Bar
 2990-155 - Clamp Kit, 2 x 6 Bar
 2990-156 - Clamp Kit, 4 x 4 Bar
 2990-157 - Clamp Kit, 5 x 7 Bar
 2990-158 - Clamp Kit, 7 x 7 Bar
 2990-159 - Clamp Kit, 3" Diamond Bar

2990-160 - Clamp Kit, 3-1/2" Diamond Bar
 2990-161 - Clamp Kit, 3 x 7 Bar
 2990-163 - Clamp Kit, 3" Sq. Bar
 2990-171 - Clamp Kit, 3 x 4 Bar
 6300-105 - Clamp Kit, 5 x 5 Bar

SHANKS

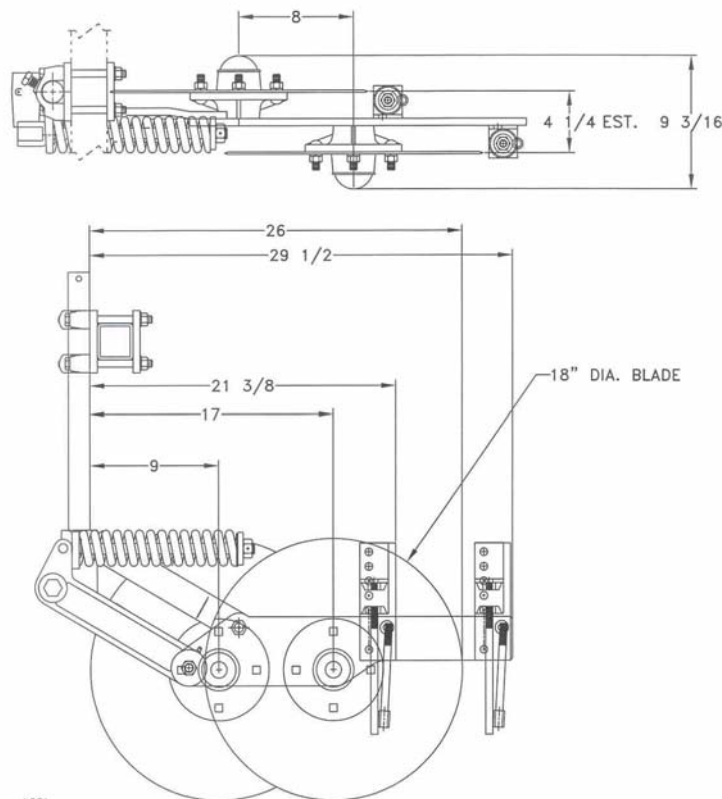
2990-310 - Shank, 12-5/8"
 2990-318 - Shank, 16"
 3010-303 - Shank, 22"
 2990-328 - Shank, 26"

2990-350 - Shank, 27-1/8"
 3011-302 - Shank, 22" Long, 5" Offset
 2990-208 - Shank, 12-5/8" Long, 3" Offset

OPTIONAL EQUIPMENT

2975-120

Gauge Wheel Kit



L221

INSTALLATION

1. Assemble 3/8 x 2-1/2" roll pin into hole closest to end of 1-1/2" diameter shank, leaving approximately equal amount protruding out each side. For 12-5/8" shank, end without hole is upper end.
2. Insert lock collar into pivot casting and slide shank up through casting and lock collar. If you wish to lock coulters from pivoting, slide roll pin into slots in casting. If you wish to let coulters pivot, do not align roll pin with casting slots, but slide shank up till roll pin contacts casting surface. Install and tighten 5/8 x 1" setscrew in lock collar to 110ft. lb.
3. Mount 18" coulters blade loosely to hub using four 1/2 x 1-1/2" carriage bolts, lockwashers and nuts.
4. Mount fertilizer injector to injection arm with a 1/2 x 1-3/4" bolt gr. 5 in the bottom hole, 1/2 x 1-3/4" flathead bolt, gr. 8 in the top hole, lockwashers and nuts. Place shims between injector and arm as needed to align injector with blade. See Parts Identification on Page 9 for more detail.
5. Center blade on hub by rotating blade and watching clearance between injector and blade. Slide blade on hub as required until the blade runs concentric, no run out on diameter. Tighten four 1/2" nuts to 120ft. lb.
The disc blade must run concentric.

Repeat Step 3-5 for second blade & injector.

6. Assemble clamp components loosely to planter front bar as shown in parts view of appropriate clamp. The clamp setscrew must mount away from spring, see Page 10 or 11 for more detail.
7. Position coulters clamps either toward the inside or outside of the planter openers on each side of the planter to equalize draft. Tighten four 1/2" nuts to secure the clamps.
8. Install coulters on planter by inserting shank up through clamps and tightening 5/8 x 1" setscrews.
9. Install 5/16 x 2-1/2" cotter pins in all vertical 1-1/2" diameter shanks. This cotter pin prevents loss of coulters should the clamp setscrews work loose. Cotter pin can be installed between clamp castings or above top casting depending on shank.
10. If you have elected to let coulters swivel, set lock collar to allow swivel in one or both directions as required. If you have elected to hold coulters rigid, set coulters straight with the direction of travel. Tighten setscrew to 110ft. lb.
11. Set spring tension by adjusting 3/4" locknut till 1/8" of threads are exposed above the nut. Tighten 3/4" locknut if greater spring pre-load is required.
12. Grease four fittings on each coulters before operation. The hub bearings should be greased only a few times each season. **Do not forget the lower parallel arm grease zerk.**

NOTE: Check clearance of injectors and coulters. Coulters must be mounted so blade can always flex up and clear drive shaft. Loosen and swivel hydraulic hoses up and out of the way to provide clearance when coulters flexes.

OPERATION

Double No-Till coulters with injection are designed to apply fertilizer 3" to 5" deep. See your fertilizer dealer for recommended depth and distance away from row for your particular fertilizer. A popular placement setting is 2" below and 2" away from the seed. High deposit rates require the fertilizer to be placed farther away from the row to avoid crop "burn".

Double No-Till coulters can be set up to swivel or not swivel as required. By not allowing the coulters to swivel, the distance between seed and fertilizer varies less when planting on contour.

When mounting Double No-Till coulters on 3-point or 2-point hitch planters, the coulters should be set up to swivel, particularly if a 4-wheel drive tractor is used. This reduces the side load on the coulters during operation. It is preferable to allow the coulters to swivel.

IMPORTANT: For proper operation, the planter frame must operate level and at the correct height, usually 20" - 22" while in operation.

In hard no-till conditions the desired operating depth may not be possible. Tighten spring nut to maintain depth if spring is flexing rather than lowering coulters to obtain maximum depth.

Planter weight may limit operating depth in hard conditions, particularly with mounted or semi-mounted planters. Be sure planter has enough weight to keep drive wheels on the ground during operation or plant populations can be drastically affected.

1. Set coulters to run vertical to ground. Operating depth and blade wear can be affected if coulters are mounted crooked. If coulters are set up to not swivel be sure they run straight with the direction of travel.
2. After a few hours use, check all bolts and setscrews for tightness.
3. After a few days use, check coulters for loose bearings. There should be no end play in the hub bearings to allow it to wobble. If necessary, remove hub cap and cotter pin, adjust slotted nut to remove wobble, reinsert cotter pin and replace hub cap.

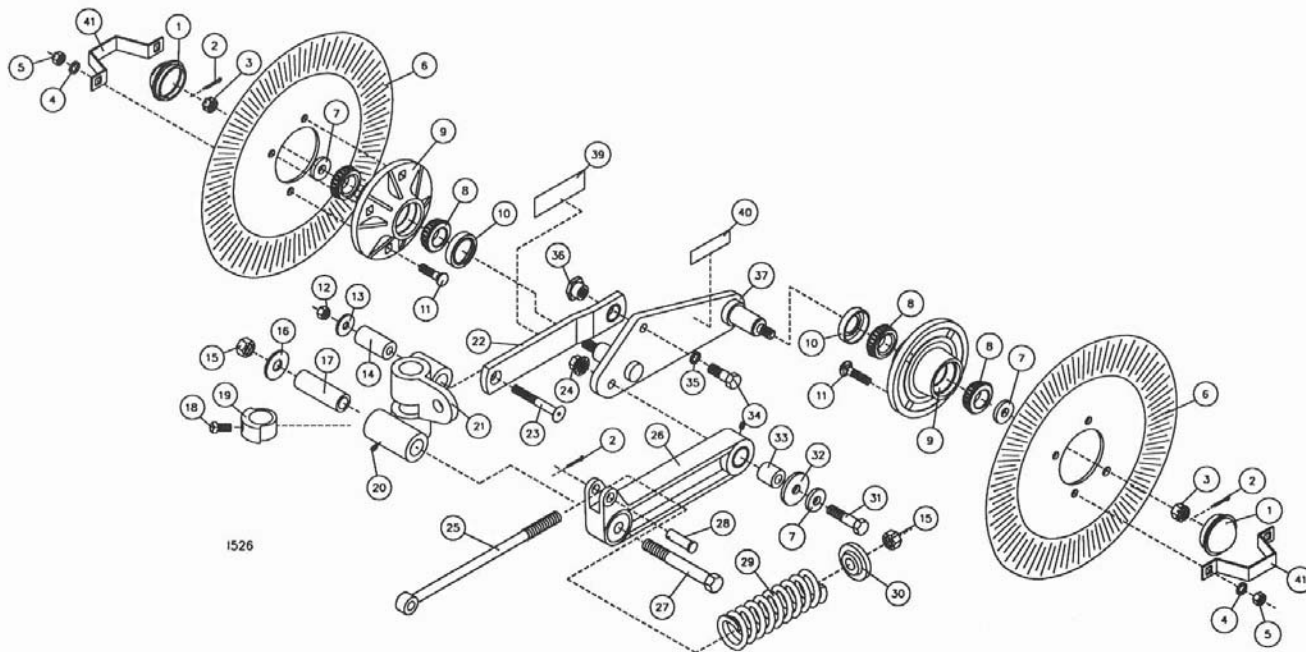
MAINTENANCE

Each coulters is equipped with five grease zerks. To ensure longevity and reliability of the coulters, the following lubrication schedule should be followed:

1	Lower Parallel Arm	Daily
2	Pivot Casting	Daily
2	Hub Bearings	Each Season

PARTS IDENTIFICATION

Double No-Till Coulter Assembly



1526

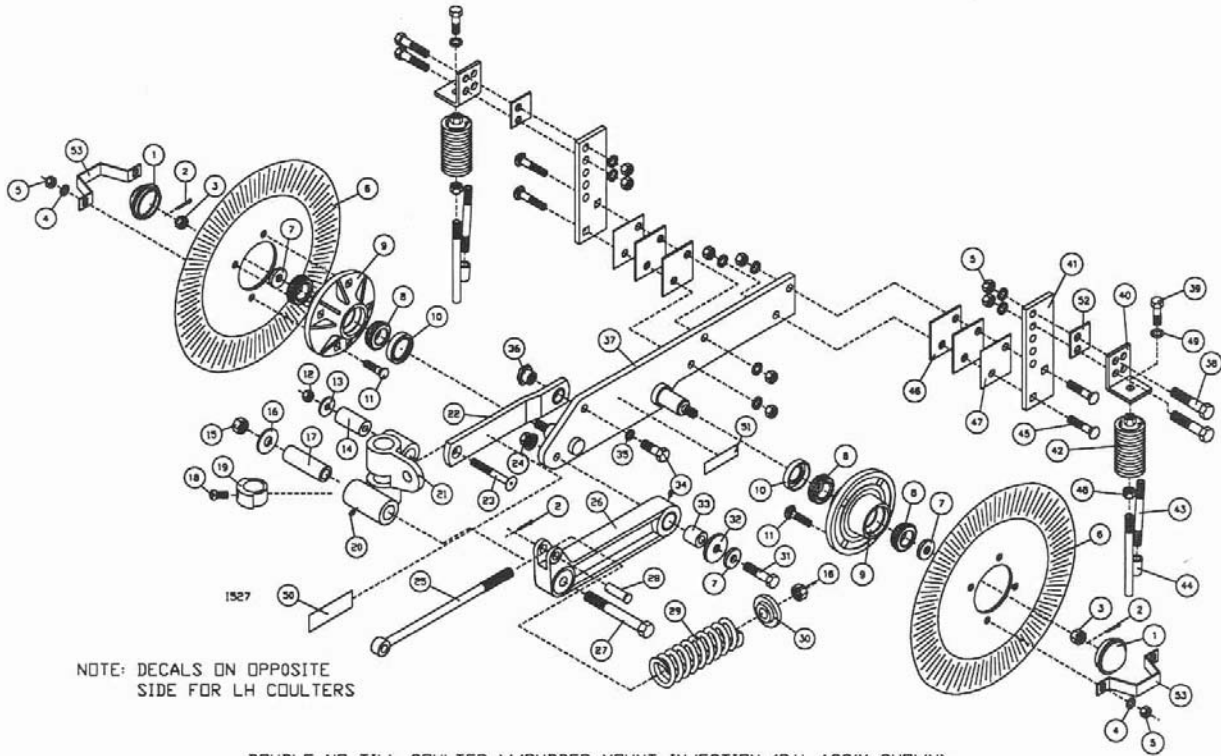
DOUBLE NO-TILL COULTER

Key	Qty.	Part No.	Description	Key	Qty.	Part No.	Description
1	2	2570-375	HUB CAP	22	1	2995-111	UPPER COULTER ARM ASSEMBLY
2	3	2531-102	1/8 x 1 1/4" COTTER PIN BLK.	1	1	2528-360	1 ID X 1 1/4 OD X 1/2" BRNZ. BUSH. (PRE-ASSEM. W/# 22)
3	2	2520-469	5/8-18 SLOTTED HEX NUT, BLK.	23	1	2502-360	1/2-13 X 4 HSFHCS
4	8	2525-352	1/2 MED. LOCKWASHER ZP.	24	1	2520-464	5/8-11 WHIZLOCK HEX NUT ZP.
5	8	2520-352	1/2-13 HEX NUT ZP.	25	1	2995-304	SPRING ROD, 13 1/2"
6	2	2571-179	18" 25 FLUTE COULTER BLADE	26	1	2995-110	LOWER COULTER ARM ASSEMBLY
7	3	2526-449	5/8 FLATWASHER X 1/4" THK.	1	1	2528-362	'2995' ARM BRONZE BUSHING
8	4	2550-027	CONE, LM67048	27	1	2502-510	3/4-10 X 6 HHCS GR.5 ZP.
9	2	2900-105	HUB PRESSED ASSEMBLY	28	1	2995-308	SPRING ROD PIN
	4	2550-029	CUP (PRE-ASSEM W/NO.9)(LM67010)	29	1	2550-795	SPRING, .562" WIRE X 11" LONG
10	2	2550-066	TRIPLE LIP SEAL, NTI #1812-4	30	1	2555-096	SPRING BUSHING CASTING
11	8	2505-339	1/2-13 x 1 1/2" CAR. BLT. GR. 5 ZP.	31	1	2502-325	5/8-11 X 3 HHCS GR. 5 ZP.
12	1	2520-357	1/2-13 LOCK HEX NUT ZP.	32	1	2527-529	21/32 ID X 2 1/4 OD X 1/4" THK.
13	1	2527-340	1/2 ID x 1 1/2 OD x 10 GA. MA. BU., ZP.	33	1	2570-761	LOWER ARM PIVOT
14	1	2995-303	PIVOT SLEEVE, 2 1/2"	34	1	2502-339	5/8-18 X 1 1/2 HHCS GR.5 ZP
15	2	2520-515	3/4-10 LOCK HEX NUT ZP.	35	1	2525-451	5/8 MED. LOCKWASHER ZP.
16	1	2527-532	25/32 x 2 x 10 GA. MA. BU., ZP.	36	1	2570-762	UPPER ARM PIVOT/WASHER ZP
17	1	2570-704	PIVOT SLEEVE	37A	1	2999-204	RH 2999 DBL CLTR ARM/SPINDLE W.A. (SHOWN)
18	1	2503-379	5/8-11 x 1 SQ. HCPSS GR.5 ZP.	37B	1	2999-203	LH 2999 DBL CLTR ARM/SPINDLE W.A.
19	1	2975-303	2975 LOCKING COLLAR	39	1	2565-162	YETTER DECAL, 1-1/2 X 4-1/2
20	5	2533-110	1/4-28 ZERK STRAIGHT SELF-TAP	40	1	2565-071	PATENT, PENDING DECAL
21A	1	2995-307	COULTER PIVOT CASTING, RH (SHOWN)	41	2	2987-301	HUB CAP RETAINER
21B	1	2995-306	COULTER PIVOT CASTING, LH				

UPDATED 03/18/08

PARTS IDENTIFICATION

Double No-Till Coulter w/Spring Tine Injection



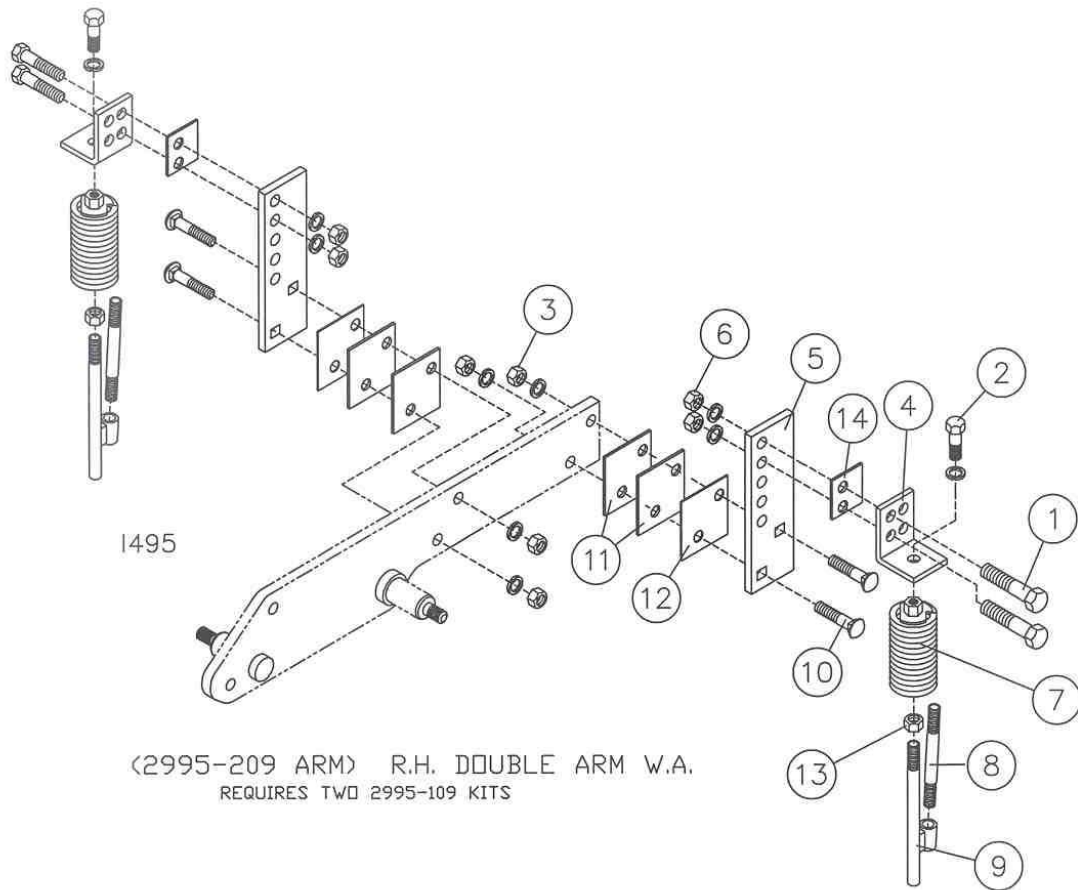
NOTE: DECALS ON OPPOSITE SIDE FOR LH COULTERS

DOUBLE NO-TILL COULTER W/RUBBER MOUNT INJECTION (R.H. ASS'Y SHOWN)

Key	Qty.	Part No.	Description	Key	Qty.	Part No.	Description
1	2	2570-375	HUB CAP	25	1	2995-304	SPRING ROD, 13 1/2"
2	3	2531-102	1/8 x 1 1/4" COTTER PIN BLK.	26	1	2995-110	LOWER COULTER ARM ASSEMBLY
3	2	2520-469	5/8-18 SLOTTED HEX NUT, BLK.	27	1	2528-362	'2995' ARM BRONZE BUSHING
4	16	2525-352	1/2 MED. LOCKWASHER ZP.	28	1	2502-510	3/4-10 X 6 HHCS GR.5 ZP.
5	16	2520-352	1/2-13 HEX NUT ZP.	29	1	2995-308	SPRING ROD PIN
6	2	2571-179	18" 25 FLUTE COULTER BLADE	29	1	2550-795	SPRING, .562" WIRE X 11" LONG
7	3	2526-449	5/8 FLATWASHER X 1/4" THK.	30	1	2555-096	SPRING BUSHING CASTING
8	4	2550-027	CONE, LM6704B	31	1	2502-325	5/8-11 X 3 HHCS GR. 5 ZP.
9	2	2900-105	HUB PRESSED ASSEMBLY	32	1	2527-529	21/32 ID X 2 1/4 OD X 1/4" THK.
10	2	2550-029	CUP (PRE-ASSEM W/NO.9)(LM67010)	33	1	2570-761	LOWER ARM PIVOT
11	8	2505-339	1/2-13 X 1 1/2" CAR. BLT. GR. 5 ZP.	34	1	2502-339	5/8-18 X 1 1/2 HHCS GR.5 ZP
12	1	2520-357	1/2-13 LOCK HEX NUT ZP.	35	1	2525-451	5/8 MED. LOCKWASHER ZP.
13	1	2527-340	1/2 ID X 1 1/2 OD X 10 GA. MA. BU., ZP.	36	1	2570-762	UPPER ARM PIVOT/WASHER ZP
14	1	2995-303	PIVOT SLEEVE, 2 1/2"	37A	1	2995-209	RH 2995 DBL CLTR ARM/SPINDLE WA (SHOWN)
15	2	2520-515	3/4-10 LOCK HEX NUT ZP.	37B	1	2995-208	LH 2995 DBL CLTR ARM/SPINDLE WA
16	1	2527-532	25/32 X 2 X 10 GA. MA. BU., ZP.	38	4	2502-294	1/2-13 X 1 1/2 HHCS GR. 5 ZP
17	1	2570-704	PIVOT SLEEVE	39	2	2502-306	9/16-12 X 3/4 HHCS GR. 5 ZP
18	1	2503-379	5/8-11 X 1 SQ. HCPSS GR.5 ZP.	40	2	2995-301	INJECTOR MOUNT PLATE
19	1	2975-303	2975 LOCKING COLLAR	41	2	2975-389	ADJUSTMENT PLATE, INJECTOR
20	5	2533-110	1/4-28 ZERK STRAIGHT SELF-TAP	42	2	2995-131	SPRING INJECTOR ASSEMBLY
21A	1	2995-307	COULTER PIVOT CASTING, RH (SHOWN)	43	2	2515-311	3" NIPPLE, 1/4 NPT STAINLESS STL
21B	1	2995-306	COULTER PIVOT CASTING, LH	44	2	2995-203	INJECTOR ROD W.A.
22	1	2995-111	UPPER COULTER ARM ASSEMBLY	45	4	2505-344	1/2-13 X 1-3/4 CAR BLT GR.5 ZP
23	1	2528-360	1 ID X 1 1/4 OD X 1 1/2" BRNZ. BUSH. (PRE-ASEM. W/NO. 23)	46	4	2970-319	KNIFE SHIM 1/8" ZP
24	1	2520-464	5/8-11 WHIZLOCK HEX NUT ZP.	47	2	2970-320	KNIFE SHIM 16 GA., ZP
25	1	2995-304	SPRING ROD, 13 1/2"	48	2	2520-412	9/16-12 JAM HEX NUT
				49	2	2525-361	9/16 MED. LOCKWASHER
				50	1	2565-162	YETTER DECAL, 1-1/2 X 4-1/2
				51	1	2565-071	PATENT PENDING DECAL
				52	2	2995-320	SPACER, INJECTOR
				53	2	2987-301	HUB CAP RETAINER

UPDATED 03/18/08

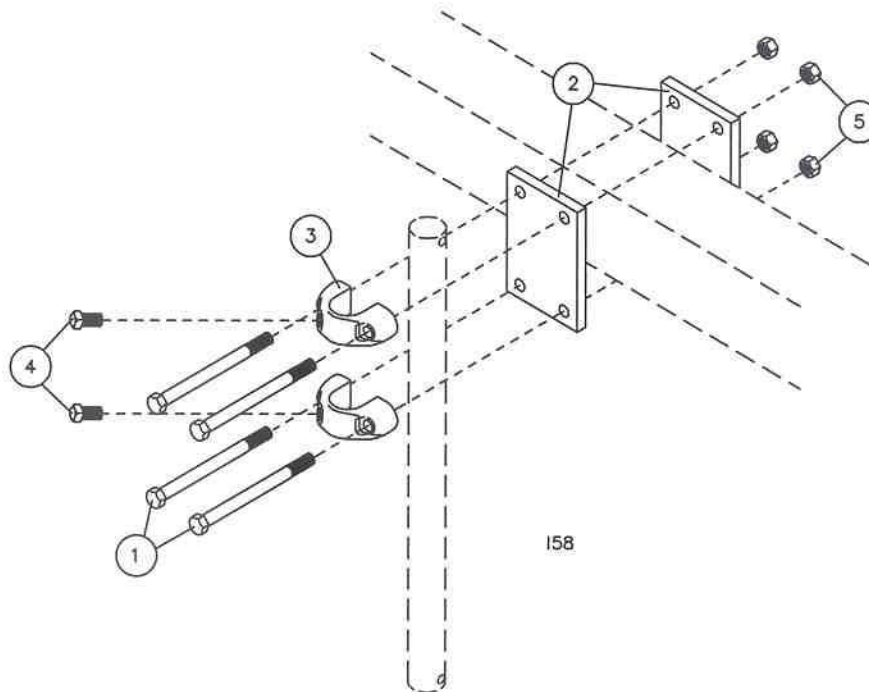
PARTS IDENTIFICATION
(2995-209 – DOUBLE COULTER ARM) R.H. W.A.
REQUIRES TWO 2995-109 KITS



2995-109 SPRING MOUNT LIQ. FERT. INJECTOR KIT

KEY	QTY.	PART NO.	DESCRIPTION
1	2	2502-294	1/2-13 X 1 1/2 HHCS GR. 5 ZP
2	1	2502-292	1/2-13 X 1 HHCS GR. 5 ZP
3	5	2525-352	1/2 MED LOCKWASHER ZP
4	1	2995-301	INJECTOR MOUNT PLATE
5	1	2975-389	ADJUSTMENT PLATE, INJECTOR
6	4	2520-352	1/2-13 HEX NUT ZP
7	1	2995-131	SPRING INJECTOR ASSEMBLY
8	1	2515-311	3" NIPPLE, 1/4 NPT STAINLESS STL
9	1	2995-212	INJECTOR ROD W.A., 1/2-13
10	2	2505-344	1/2-13 X 1-3/4 CAR. BOLT GR.5 ZP
11	2	2970-319	KNIFE SHIM 1/8" ZP
12	1	2970-320	KNIFE SHIM 16 GA., ZP
13	1	2520-356	1/2-13 JAM HEX NUT ZP
14	1	2995-320	SPACER, INJECTOR

PARTS IDENTIFICATION



2990-154 Clamp Kit, 2-1/2" Sq. Bar

Key	Qty.	Part No.	Description
1	4	2502-368	1/2-13 x 5-1/2" HHCS GR. 5 ZP
2	2	2990-313	Clamp Plate, 2-1/2 Square Bar
3	2	2990-360	Clamp Casting, Drilled
4	2	2503-379	5/8-11 x 1 Sq. HCPSS Gr. 5 ZP
5	4	2520-357	1/2-13 Hex Lock Nut ZP
6	1	2515-690	5/8 OD Vinyl Tube, Cut 1-1/2"

2990-155 Clamp Kit, 2 x 6 Bar

Key	Qty.	Part No.	Description
1	4	2502-362	1/2-13 X 5" HHCS GR. 5 ZP
2	2	2990-322	Clamp Plate, 2 x 6 Bar
3	2	2990-360	Clamp Casting, Drilled
4	2	2503-379	5/8-11 x 1 Sq. HCPSS Gr. 5 ZP
5	4	2520-357	1/2-13 Hex Lock Nut ZP

2990-156 Clamp Kit, 4 x 4 Bar

Key	Qty.	Part No.	Description
1	4	2502-371	1/2-13 x 7" HHCS GR. 5 ZP
2	2	2990-314	Clamp Plate, 4" Sq. & 3" Diamond Bar
3	2	2990-360	Clamp Casting, Drilled
4	2	2503-379	5/8-11 x 1 Sq. HCPSS Gr. 5 ZP
5	4	2520-357	1/2-13 Hex Lock Nut ZP

2990-157 Clamp Kit, 5 x 7 Bar

Key	Qty.	Part No.	Description
1	4	2502-369	1/2-13 X 8" HHCS GR. 5 ZP
2	2	2990-315	Clamp Plate, 5 x 7 or 7 x 7 Bar
3	2	2990-360	Clamp Casting, Drilled
4	2	2503-379	5/8-11 x 1 Sq. HCPSS Gr. 5 ZP
5	4	2520-357	1/2-13 Hex Lock Nut ZP

NOTE: The 5/8" OD vinyl tube provided in 2990-154, 2990-158, 2990-161 and 2990-163 is required on implements using a 5/8" ID hose.

2990-158 Clamp Kit, 7 x 7 Bar

Key	Qty.	Part No.	Description
1	4	2502-376	1/2-13 x 10" HHCS GR. 5 ZP
2	2	2990-315	Clamp Plate, 5 x 7 or 7 x 7 Bar
3	2	2990-360	Clamp Casting, Drilled
4	2	2503-379	5/8-11 x 1 Sq. HCPSS Gr. 5 ZP
5	4	2520-357	1/2-13 Hex Lock Nut ZP
6	1	2515-690	5/8 OD Vinyl Tube, Cut 1-1/2"

2990-161 Clamp Kit, 3 x 7 Bar

Key	Qty.	Part No.	Description
1	4	2502-373	1/2-13 X 6" HHCS GR. 5 ZP
2	2	2990-315	Clamp Plate, 5 x 7 or 7 x 7 Bar
3	2	2990-360	Clamp Casting, Drilled
4	2	2503-379	5/8-11 x 1 Sq. HCPSS Gr. 5 ZP
5	4	2520-357	1/2-13 Hex Lock Nut ZP
6	1	2515-690	5/8 OD Vinyl Tube, Cut 1-1/2"

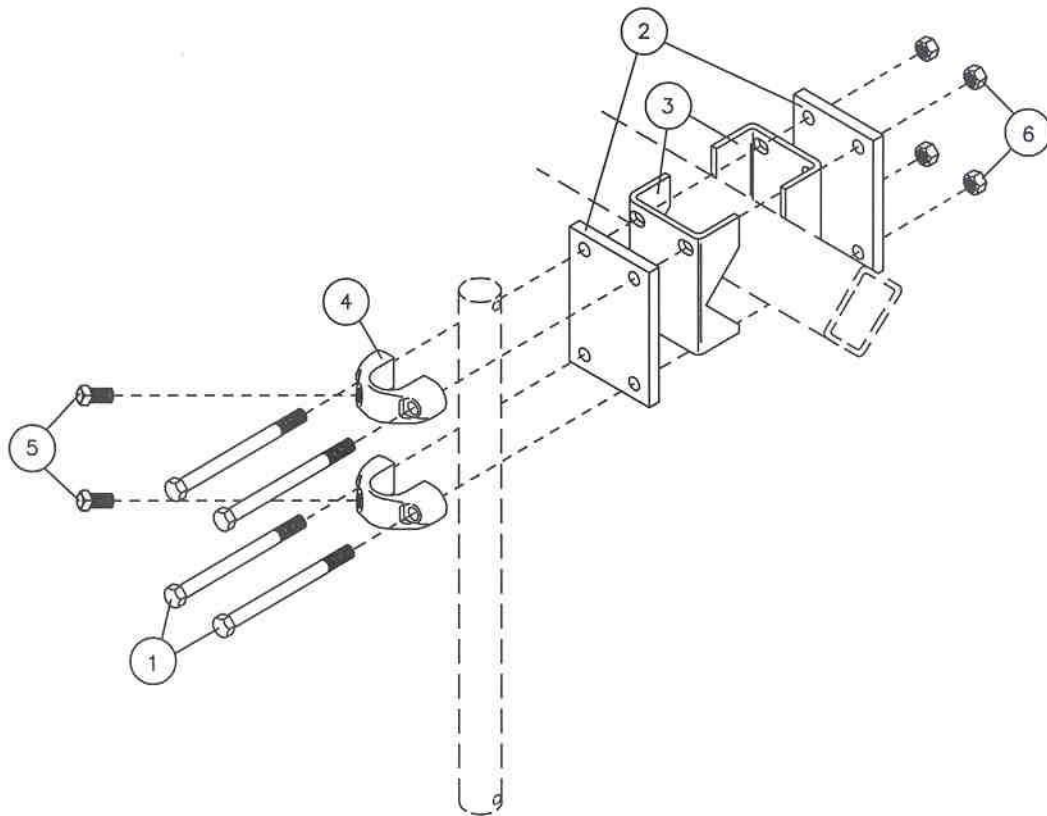
2990-163 Clamp Kit, 3 x 3 Bar

Key	Qty.	Part No.	Description
1	4	2502-373	1/2-13 x 6" HHCS GR. 5 ZP
2	2	2990-339	Clamp Plate, 3" Square Bar
3	2	2990-360	Clamp Casting, Drilled
4	2	2503-379	5/8-11 x 1 Sq. HCPSS Gr. 5 ZP
5	4	2520-357	1/2-13 Hex Lock Nut ZP
6	1	2515-690	5/8 OD Vinyl Tube, Cut 1-1/2"

2990-171 Clamp Kit, 3 x 4 Bar

Key	Qty.	Part No.	Description
1	4	2502-373	1/2-13 X 6" HHCS GR. 5 ZP
2	2	2990-314	Clamp Plate, 4" Sq. & 3" Dmd Bar
3	2	2990-360	Clamp Casting, Drilled
4	2	2503-379	5/8-11 x 1 Sq. HCPSS Gr. 5 ZP
5	4	2520-357	1/2-13 Hex Lock Nut ZP
6	1	2515-690	5/8 OD Vinyl Tube, Cut 1-1/2"

PARTS IDENTIFICATION



159

2990-159 Clamp Kit, 3" Diamond Bar

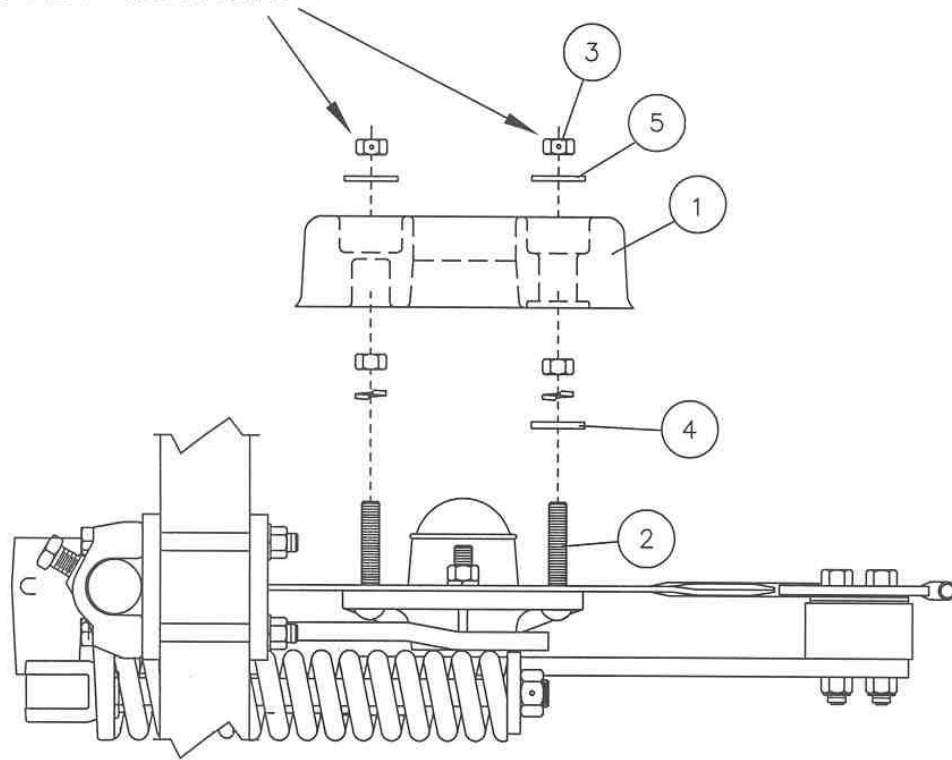
Key	Qty.	Part No.	Description
1	4	2502-369	1/2-13 x 8" HHCS Gr. 5 ZP
2	2	2990-314	Clamp Plate, 4" Sq. or 3" Diamond
3	2	2970-326	Adaptor, 3" Sq. Diamond Bar
4	2	2990-360	Clamp Casting, Drilled
5	2	2503-379	5/8-11 x 1" Sq. HCPSS Gr. 5 ZP
6	4	2520-352	1/2-13 Lock Hex Nut ZP

2990-160 Clamp Kit, 3-1/2" Diamond Bar

Key	Qty.	Part No.	Description
1	4	2502-374	1/2-13 x 9" HHCS Gr. 5 ZP
2	2	2990-316	Clamp Plate, 3-1/2" Diamond Bar
3	2	2970-327	Adaptor, 3-1/2" Sq. Diamond Bar
4	2	2990-360	Clamp Casting, Drilled
5	2	2503-379	5/8-11 x 1" Sq. HCPSS Gr. 5 ZP
6	4	2520-352	1/2-13 Lock Hex Nut ZP

PARTS IDENTIFICATION

DO NOT OVER TIGHTEN.



164

2995-120 GAUGE WHEEL KIT

REF.	QTY.	PART NO.	DESCRIPTION
1	1	2515-560	GAUGE WHEEL, 9" X 2 1/2"
	1	2515-561	GAUGE WHEEL, 11" X 2 1/2"
2	2	2505-330	1/2-13 X 3 SHAKER SCR.N.BLT.GR.5 ZP.
3	2	2520-357	1/2-13 LOCK HEX NUT ZP.
4	1	2527-330	1/2 ID X 1 1/2 OD X 7 GA. M.B. ZP.
5	2	2527-340	1/2 ID X 1 1/2 OD X 10 GA. M.B. ZP.

NOTE: 9" Diameter gauge wheel for 4" fertilizer placement depth*
 11" Diameter gauge wheel for 3" fertilizer placement depth*

*Fertilizer placement depths are approximate depending on soil conditions.

TROUBLESHOOTING

Problem

Setting coulter

Cause

Planter not set correctly.

Blade not penetrating.

Solution

Insufficient coulter spring pressure.

Ensure that in operation the planter frame is at correct height (20"-22") and level the toolbar.

Spring not deflecting.

Coulter incorrectly installed.

Tighten coulter spring locknut down 1" further.

Fertilizer too deep.

Excessive spring pressure.

Adjust height of coulter by sliding shank down.

Spring not deflecting.

Back off coulter spring locknut to 1/8" of thread exposed.

Coulter incorrectly installed.

Back off coulter spring locknut to 1/8" of thread exposed.

Fertilizer too shallow.

Lack of depth control.

Adjust height of coulter by sliding shank up.

Planter frame too low.

Install gauge wheel kit part no. 2975-120.

Blade not penetrating.

Raise planter frame to correct height.

Blade not rotating properly.

Coulter incorrectly installed.

Tighten coulter spring locknut down 1" further.

Incorrect depth control

Adjust height of coulter by sliding shank down.

Loose soil

Use gauge wheel kit part no. 2975-120.

Coulter works best in firmer soil.

NOTES:

Our name Is getting known

Just a few years ago, Yetter products were sold primarily to the Midwest only. Then we embarked on a program of expansion and moved into the East, the South, the West and now north into Canada. We're even getting orders from as far away as Australia and Africa.

So, when you buy Yetter products . . .you're buying a name that's recognized. A name that's known and respected. A name that's become a part of American agriculture and has become synonymous with quality and satisfaction in the field of conservation tillage.

Thank you.

YETTER MANUFACTURING CO.

Colchester, IL 62326-0358 ☎ 309/776-4111

Toll Free 800/447-5777

Fax 309/776-3222

Website: www.yetterco.com

E-mail: info@yetterco.com