

Yetter

FARM EQUIPMENT

5500 SERIES COVER CROP DEVASTATOR

5500-001B 48"

5500-002B 60"

5500-003B 90"

OWNER'S MANUAL
PART IDENTIFICATION
2565-976_REV_B • 08/2022



YETTER MANUFACTURING CO.

Founded 1930

Colchester, IL 62326

Toll free: (800)447-5777.

Fax: (309)776-3222

Website: yetterco.com

E-mail: info@yetterco.com

YETTER

TABLE OF CONTENTS

FOREWARD.....	2
WARRANTY.....	2
SAFETY INFORMATION.....	3 – 4
TORQUE.....	5
ASSEMBLY INSTRUCTIONS.....	6 – 7
MAINTENANCE / LOCK UP.....	8
PART IDENTIFICATION.....	9 - 14

FOREWORD

You've just joined an exclusive but rapidly growing club.

For our part, we want to welcome you to the group and thank you for buying a Yetter product.

We hope your new Yetter products will help you achieve both goals-increase your productivity and increase your efficiency so that you may generate more profit.

This operator's manual has been designed into 4 major sections: Foreword, Safety Precautions, Installation Instructions and Parts Breakdown.

This **SAFETY ALERT SYMBOL** indicates important safety messages in the manual. When you see this symbol, be alert to the possibility of **PERSONAL INJURY** & carefully read the message that follows.



The word **NOTE** is used to convey information that is out of context with the manual text. It contains special information such as specifications, techniques and reference information of a supplementary nature.

The word **IMPORTANT** is used in the text when immediate damage will occur to the machine due to improper technique or operation.

correct operating procedure and to lubricate and maintain the product according to the maintenance schedule in the operator's manual.

The user is responsible for inspecting his machine and for having parts repaired or replaced when continued use of the product would cause damage or excessive wear to the other parts.

It is the user's responsibility to deliver his machine to the Yetter dealer who sold him the product for service or replacement of defective parts, which are covered by the warranty policy.

If you are unable to understand or follow the instructions provided in this publication, consult your local Yetter dealer or contact:

YETTER MANUFACTURING CO.

309/776-4111

800/447-5777

309/776-3222 (FAX)

Website: www.yetterco.com

E-mail: info@yetterco.com

WARRANTY

Yetter Manufacturing warrants all products manufactured and sold by it against defects in material. This warranty being expressly limited to replacement at the factory of such parts or products as shall appear to be defective after inspection. This warranty does not obligate the Company to bear cost of labor in replacement of parts. It is the policy of the Company to make improvements without incurring obligations to add them to any unit already sold. No warranty is made or authorized to be made, other than herein set forth. This warranty is in effect for one year after purchase.

DEALER: _____

Yetter Manufacturing warrants its own products only and cannot be responsible for damages to equipment on which mounted.

operator's manual and comply with the safe and

BE ALERT!

YOUR SAFETY IS INVOLVED



WATCH FOR THIS SYMBOL. IT POINTS OUT IMPORTANT SAFETY PRECAUTIONS. IT MEANS “ATTENTION – BE ALERT!”

It is your responsibility as an owner, operator, or supervision to know and instruct everyone using this machine at the time of initial assignment and at least annually thereafter, of the proper operation, precautions, and work hazards which exist in the operation of the machine in accordance with OSHA regulations.

Safety Is No Accident

The following safety instructions, combined with common sense, will save your equipment from needless damage and the operator from unnecessary exposure to personal hazard. Pay special attention to the caution notes in the text. Review this manual at least once a year with all operators.



1. Read and understand the operator's manual before operating this machine. Failure to do so is considered a misuse of the equipment.
2. Make sure equipment is secure before operating.
3. Always keep children away from equipment when operating.
4. Make sure everyone that is not directly involved with the operation is out of the work area before beginning operation.
5. Make sure all safety devices, shields, and guards are in place and functional before beginning operation
6. Shut off all power to adjust, service, or clean.
7. Keep hands, feet, and clothing away from moving parts. It is a good idea to remove all jewelry before operating.
8. Inspect the machine periodically during operation for signs of excessive wear, loose fasteners, and unusual noises.

PLEASE READ, VERY IMPORTANT



**SECURE PLANTER FRAME AGAINST UNWANTED LOWERING BY APPLYING THE
LOCKING MECHANISM ON THE HYDRAULIC CYLINDERS!**

BOLT TORQUE

Important: Over-tightening hardware can cause just as much damage as under-tightening. Tightening hardware beyond the recommended range can reduce its shock load capacity.

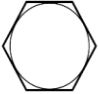



All hardware on the 5500 Cover Crop Devastator is either Grade 5 or Grade 8, unless otherwise noted. Grade 5 cap screws are marked with three radial lines on the head. Grade 8 cap screws are marked with six radial lines on the head. If hardware must be replaced, be sure to replace it with hardware of equal size, strength and thread type. Refer to the torque values chart when tightening hardware.

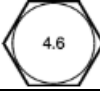
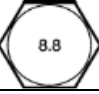


The chart below is a guide for proper torque. Use it unless a specified torque is called out elsewhere in the manual.

Torque is the force applied to the end of the handle or cheater bar, times the length of the handle or bar.

Use a torque wrench wherever possible

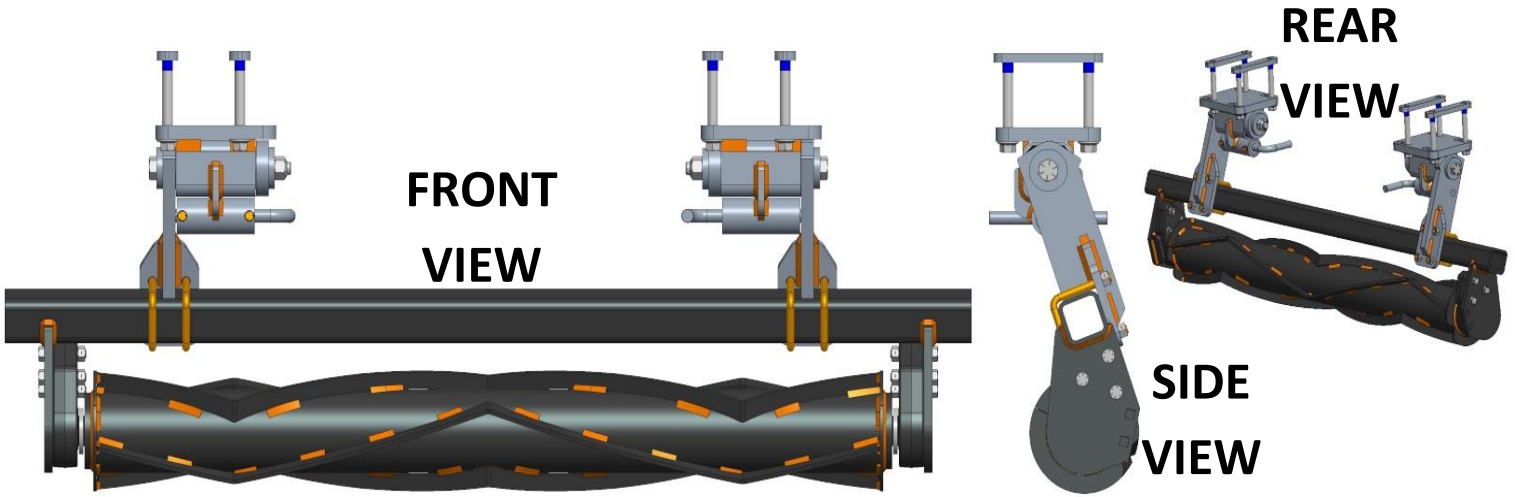
The following table shows torque in ft.-lbs. for coarse thread hardware.

Bolt Diameter and Threads per Inch	 Grade 2	 Grade 5	 A-325	 Grade 8
1/4	6	10		14
5/16	12	20		30
3/8 - 16	25	35		50
7/16 - 14	35	55		80
1/2 - 13	55	85		125
9/16 - 12	75	125		175
5/8 - 11	105	170		235
3/4-10	185	305		425
7/8 - 9	170	445		690
1-8	260	670		1030
1 1/8 - 7	365	900		1460
1 1/4 - 7	515	1275		2060
1 3/8 - 6	675	1675		2700
1 1/2 - 6	900	2150		3500
1 3/4 - 5	1410	3500		5600

Bolt Diameter	 4.6	 8.8	 10.9	 12.9
	4.6	8.8	10.9	12.9
M4	0.9	2.3	3.2	3.8
M5	1.8	4.5	6.5	7.6
M6	3.0	7.7	11.1	13.0
M7	5.0	13.0	18.5	21.7
M8	7.3	18.8	26.9	31.4
M10	14.4	37.2	53.2	62.2
M12	25.2	64.9	92.8	108.5
M14	40.2	103.7	148.4	173.4
M16	62	161	230	269
M18	86	222	318	372
M20	122	314	449	525
M22	166	428	613	716
M24	211	543	777	908
M27	309	796	1139	1331

ASSEMBLY INSTRUCTIONS

NOTE: SEE PAGE 12 & 13 FOR PLANTER/TOOLBAR MOUNT BRACKET ASSEMBLY.
MODIFICATIONS TO MOUNTING BRACKETS MAY BE REQUIRED IN CERTAIN SITUATIONS!

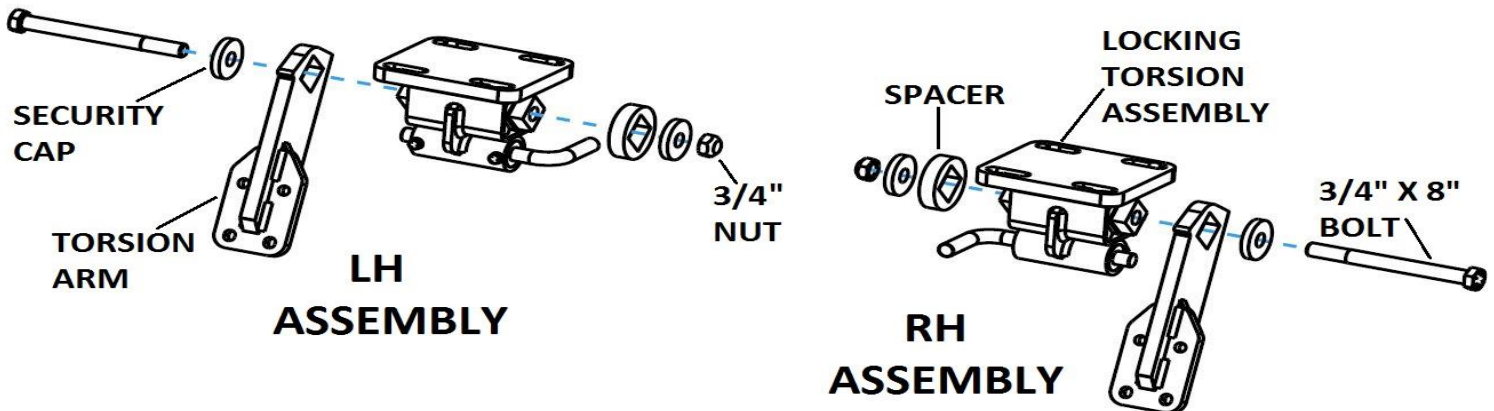


Step 1: Attach the 5000-187 torsion mount bracket to the frame using 4) M16 X 110 flange head bolts & 2) 5000-420 clamp straps. Thread the bolts into the clamp straps by hand & tighten to torque specifications.

Note: Torque the M16 bolts @ 236 ft. /lbs.



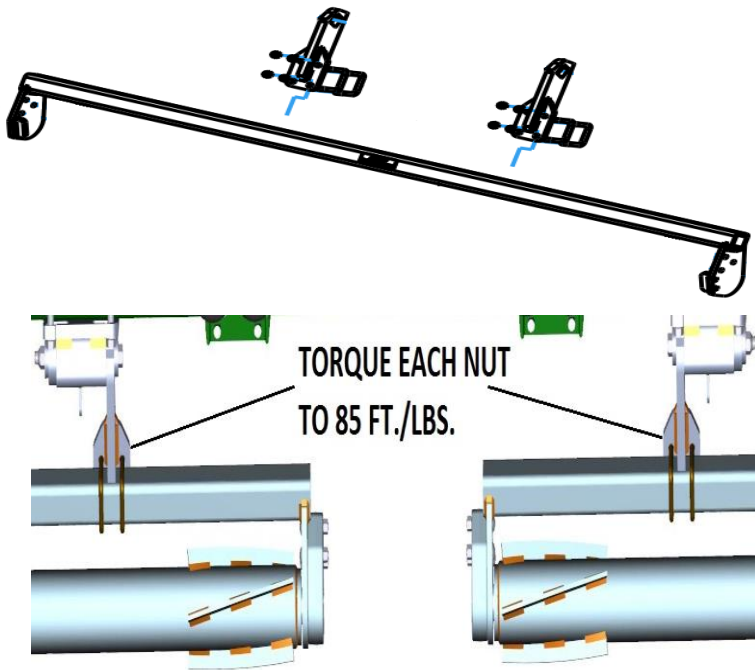
Step 2: Install 5000-292 Torsion Arm onto the Torsion Pivot Assembly & secure with $\frac{3}{4}$ " x 8" bolts & $\frac{3}{4}$ " lock nuts.



ASSEMBLY INSTRUCTIONS

Step 3: Attach the roller mount to the pivot arms using the ½" x 2-1/2" x 3-1/2" U-bolts & lock nuts.

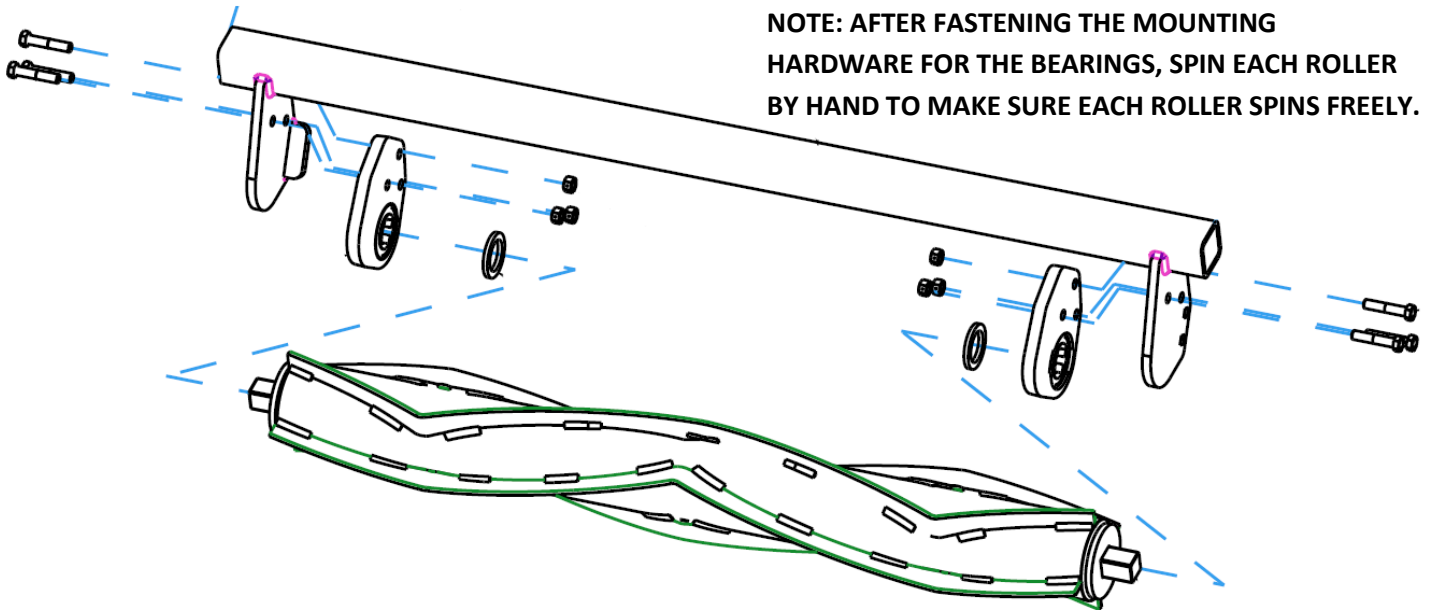
NOTE: The bearing support tab on the roller mount tube should be on the backside of the bearing mount plate.



Step 4: Install the roller, shim washer, & bearings to roller tube using ½" x 2-1/2" bolts & locknuts.

IMPORTANT: The shim washer must be installed between the roller & bearing. The notches of the bearing housing must face the mounting plate. The extended race on the bearing will face toward from the roller.

NOTE: AFTER FASTENING THE MOUNTING HARDWARE FOR THE BEARINGS, SPIN EACH ROLLER BY HAND TO MAKE SURE EACH ROLLER SPINS FREELY.



BEARING REPLACEMENT / MAINTENANCE

Put bearing housing in a vice, use a pry bar to turn bearing in the housing parallel with the slots, remove old bearing, apply anti-seize lubricant to the interior of the bearing housing, insert the new bearing in the slots, & use a pry bar to move back to position. Wobble bearing around to help work the lubricant into the outer race of the bearing.

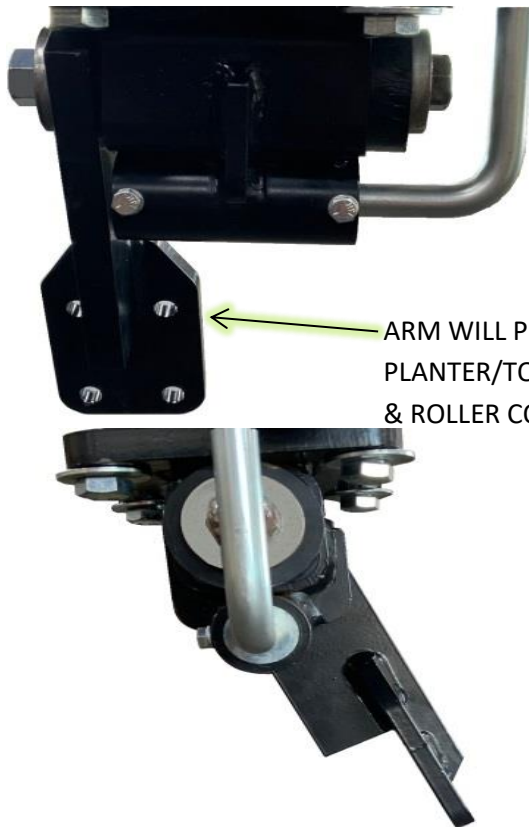
Anti-seize needs to be applied each year to the bearings to allow them wobble/pivot freely to extend service life.



LOCK UP

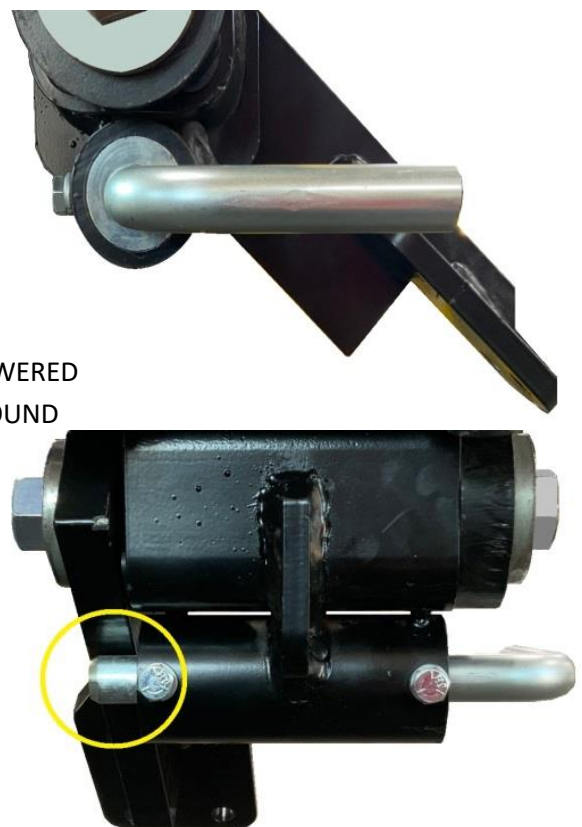
To "lock up" Devastator rollers, lower planter down & rotate locking handle 90 degrees. If handle is vertical, the devastator will be in operation mode. If the handle is horizontal & is in front of the pivot arm (see yellow circle below), the devastator is locked up. On torsion style devastators without the lock up feature, a 5000-430 Lock Pin can be ordered separately to lock up devastator rollers.

Operating Position



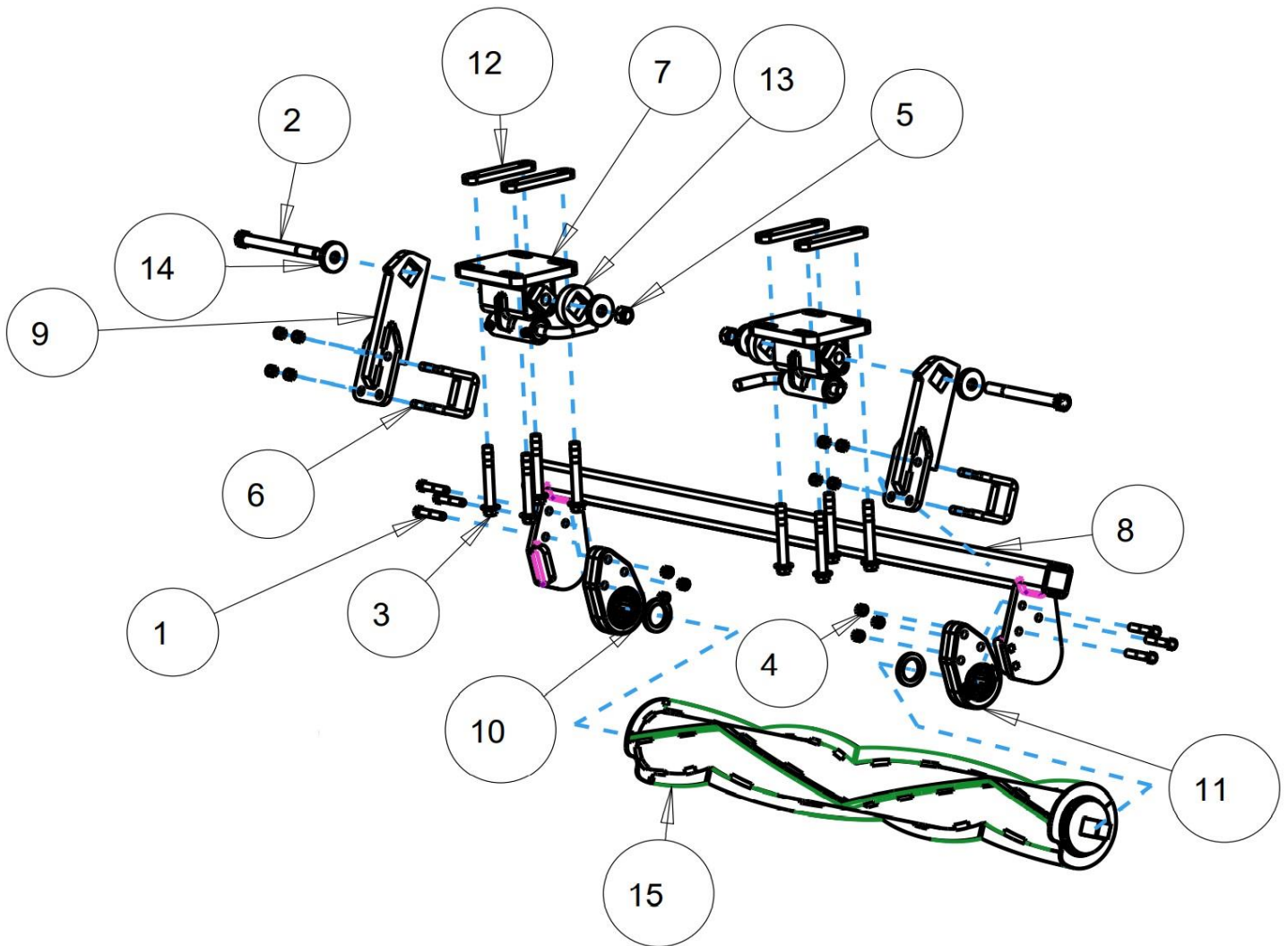
ARM WILL PIVOT BACK AS
PLANTER/TOOLBAR IS LOWERED
& ROLLER CONTACTS GROUND

Locked Up Position



5500-001B PARTS IDENTIFICATION

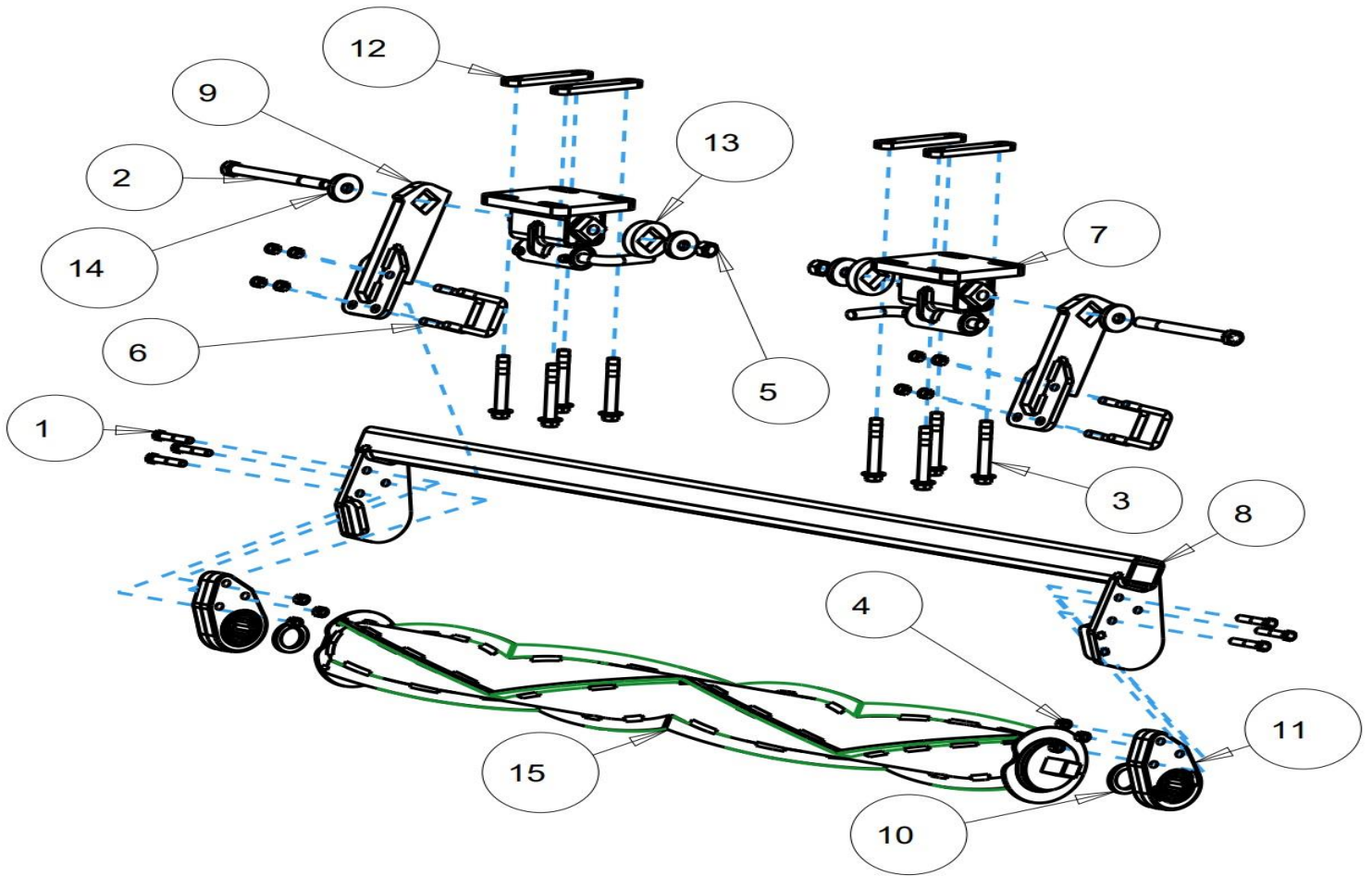
48 INCH COVER CROP ROLLER KIT



ITEM	PART NO.	DESCRIPTION	QTY
1	2502-353	1/2-13 X 2 1/2HHCS GR8 ZP	6
2	2502-430	3/4-10 X 8 HHCS GR8, ZP	2
3	2502-805	M16 X 2 X 120 HEX FLANGE SCREW, THREADLOCK, ZP	8
	2502-806	M16 X 2 X 110 HEX FLANGE SCREW, THREADLOCK, ZP	8
4	2520-357	1/2-13 LOCK HEX NUT, GR A, ZP	14
5	2520-604	3/4-10 HEX TOP LOCK	2
6	2570-568	1/2 X2-1/2 X3-1/2 U-BOLT	4
7	5000-187	LOCKING TORSION ASSEMBLY	2
8	5000-255	ROLLER MOUNT W.A.,	1
9	5000-292	TORSION ARM W.A.	2
10	5000-322	SHIM WASHER ZP	2
11	5000-355	BEARING ASSEMBLY	2
	2550-059	DEVASTATOR BEARING (NO CAST HOUSING)	2
12	5000-420	4" CLAMP STRAP, TAPPED	4
13	5000-468	SPACER	2
14	5000-469	SECURITY CAP	4
15	5500-205	48" CC ROLLER W.A. (2022)	1

5500-002B PARTS IDENTIFICATION

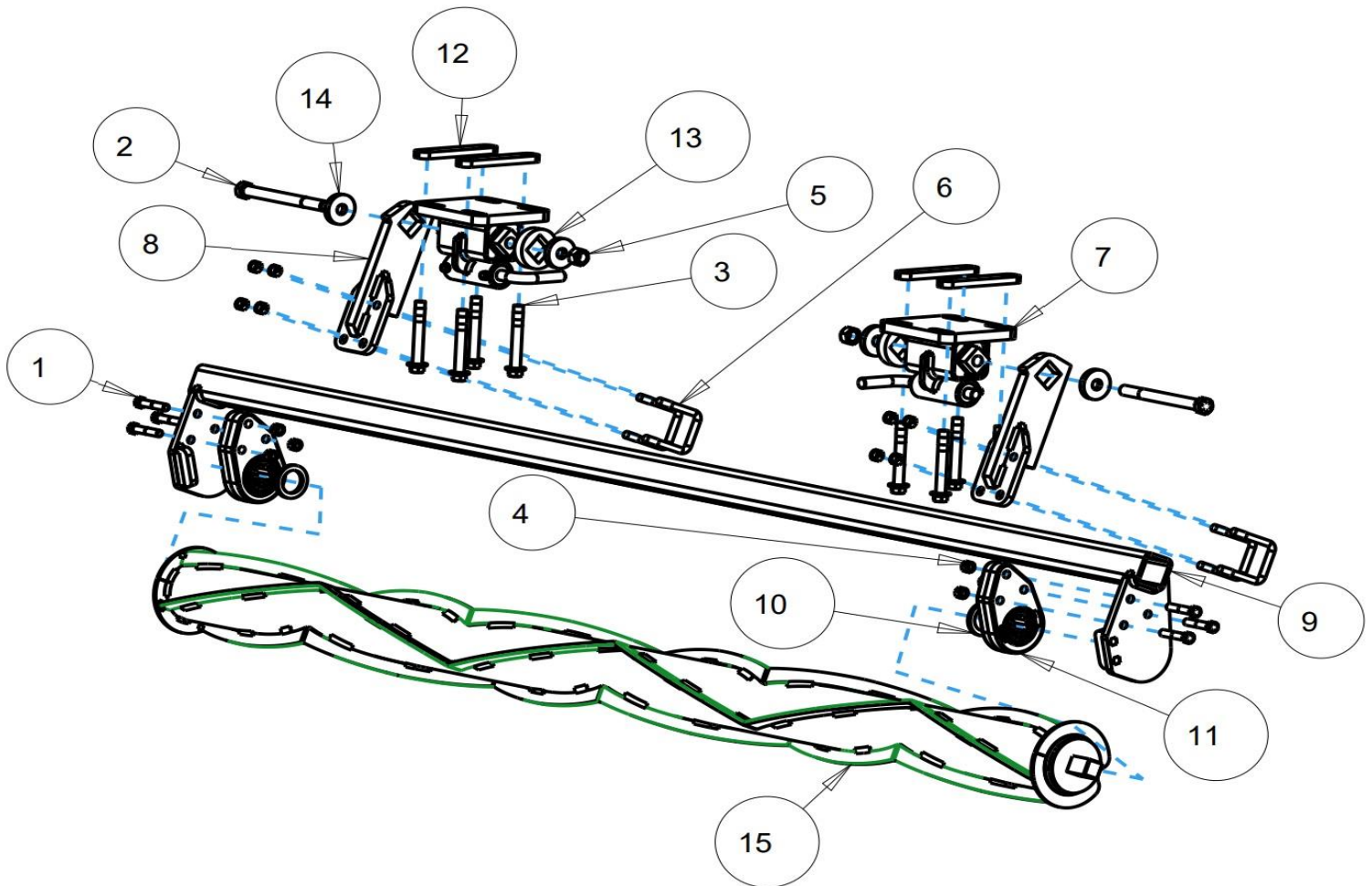
60 INCH COVER CROP ROLLER KIT



ITEM	PART NO.	DESCRIPTION	QTY
1	2502-353	1/2-13 X 2 1/2 HHCS GR8 ZP	6
2	2502-430	3/4-10 X 8 HHCS GR8, ZP	2
3	2502-805	M16 X 2 X 120 HEX FLANGE SCREW, THREADLOCK, ZP	8
	2502-806	M16 X 2 X 110 HEX FLANGE SCREW, THREADLOCK, ZP	8
4	2520-357	1/2-13 LOCK HEX NUT, GR A, ZP	14
5	2520-604	3/4-10 HEX TOP LOCK	2
6	2570-568	1/2 X2-1/2 X3-1/2 U-BOLT	4
7	5000-187	LOCKING TORSION ASSEMBLY	2
8	5000-2000	60" ROLLER MOUNT W.A.	1
9	5000-292	TORSION ARM W.A.	2
10	5000-322	SHIM WASHER ZP	2
11	5000-355	BEARING ASSEMBLY	2
	2550-059	DEVASTATOR BEARING (NO CAST HOUSING)	2
12	5000-420	4" CLAMP STRAP, TAPPED	4
13	5000-468	SPACER	2
14	5000-469	SECURITY CAP	4
15	5500-206	60" CC ROLLER W.A. (2022)	1

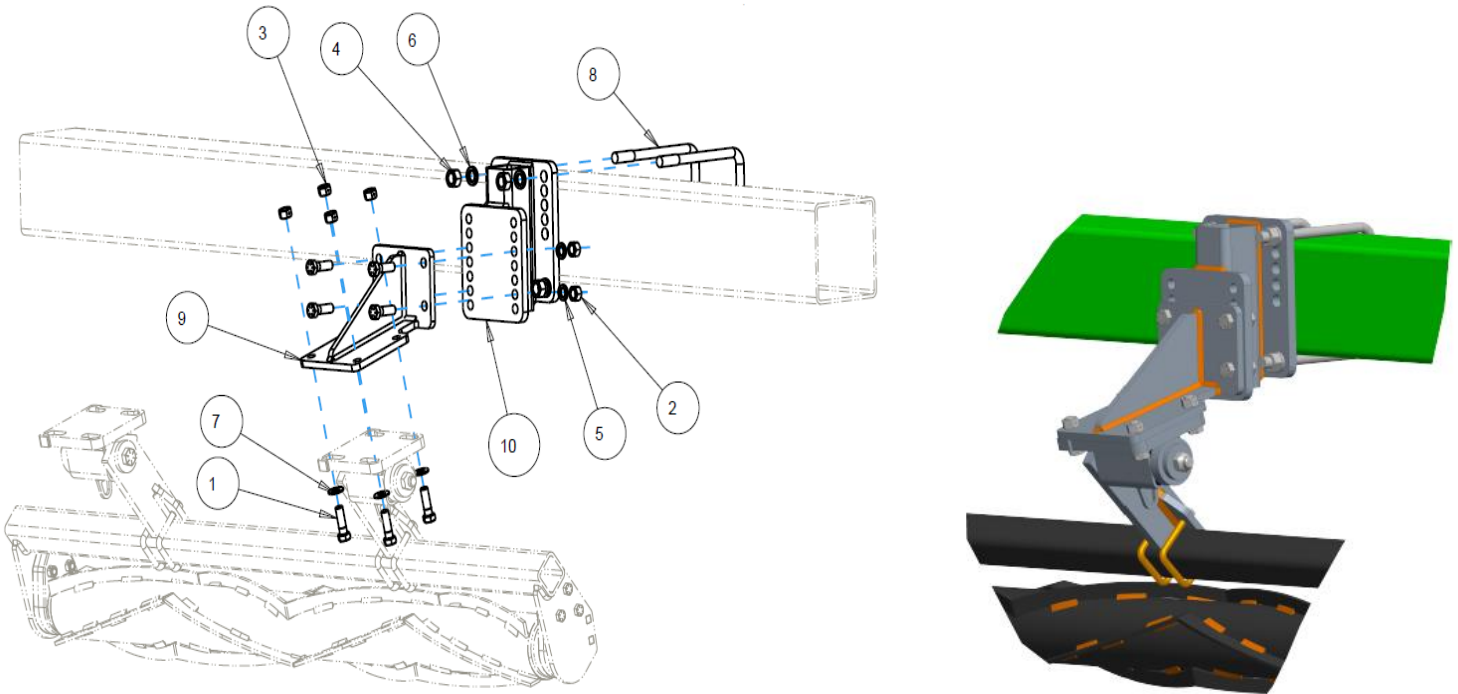
5500-003B PARTS IDENTIFICATION

90 INCH COVER CROP ROLLER KIT



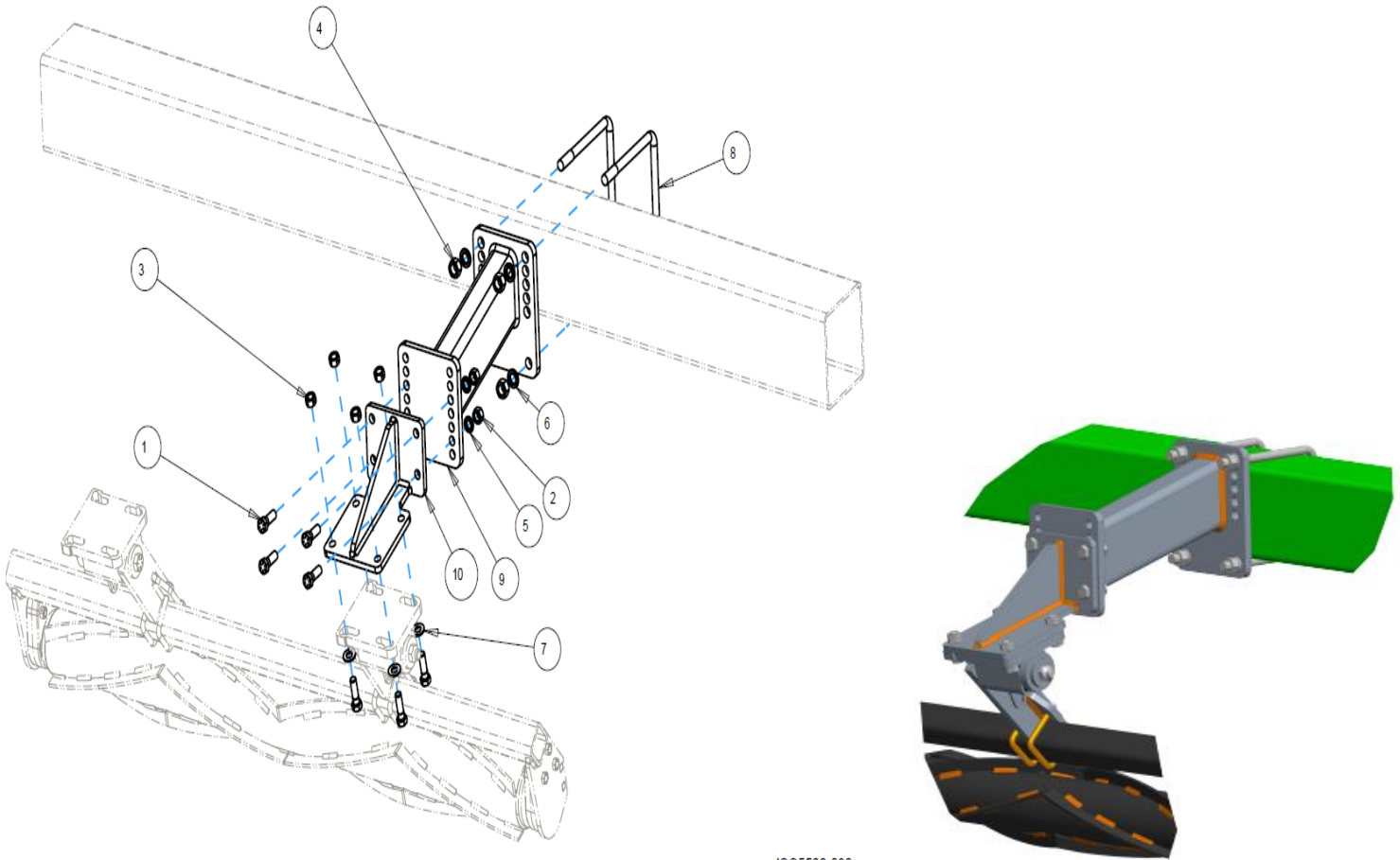
ITEM	PART NO.	DESCRIPTION	QTY
1	2502-353	1/2-13 X 2 1/2 HHCS GR8 ZP	6
2	2502-430	3/4-10 X 8 HHCS GR8, ZP	2
3	2502-805	M16 X 2 X 120 HEX FLANGE SCREW, THREADLOCK, ZP	8
	2502-806	M16 X 2 X 110 HEX FLANGE SCREW, THREADLOCK, ZP	8
4	2520-357	1/2-13 LOCK HEX NUT, GR A, ZP	14
5	2520-604	3/4-10 HEX TOP LOCK	2
6	2570-568	1/2 X2-1/2 X3-1/2 U-BOLT	4
7	5000-187	LOCKING TORSION ASSEMBLY	2
8	5000-292	TORSION ARM W.A.	2
9	5000-299	90" ROLLER MOUNT W.A.	1
10	5000-322	SHIM WASHER ZP	2
11	5000-355	BEARING ASSEMBLY	2
	2550-059	DEVASTATOR BEARING (NO CAST HOUSING)	2
12	5000-420	4" CLAMP STRAP, TAPPED	4
13	5000-468	SPACER	2
14	5000-469	SECURITY CAP	4
15	5500-207	90" CC ROLLER W.A. (2022)	1

5500-031 PARTS IDENTIFICATION SHORT MOUNT KIT



ITEM	PART NO.	DESCRIPTION	QTY
1	2502-322	5/8-11 x 2 HHCS GR 8	8
2	2520-452	5/8-11 HEXNUT ZP	4
3	2520-459	5/8-11 LOCK HEX NUT, GR B, ZP	4
4	2520-506	3/4-10 HEX NUT, GR 8, ZP	4
5	2525-451	5/8 MED. LOCKWASHER ZP.	4
6	2525-501	3/4 MED. LOCKWASHER ZP.	4
7	2526-453	5/8 SAE FLATWASHER ZP	4
8	2570-478	3/4 X 7 X 9 U-BOLT, ZP	2
9	5500-201	ROLLER MAIN MOUNT W.A.	1
10	5500-202	FRAME MOUNT W.A., SHORT	1

5500-032 PARTS IDENTIFICATION LONG MOUNT KIT

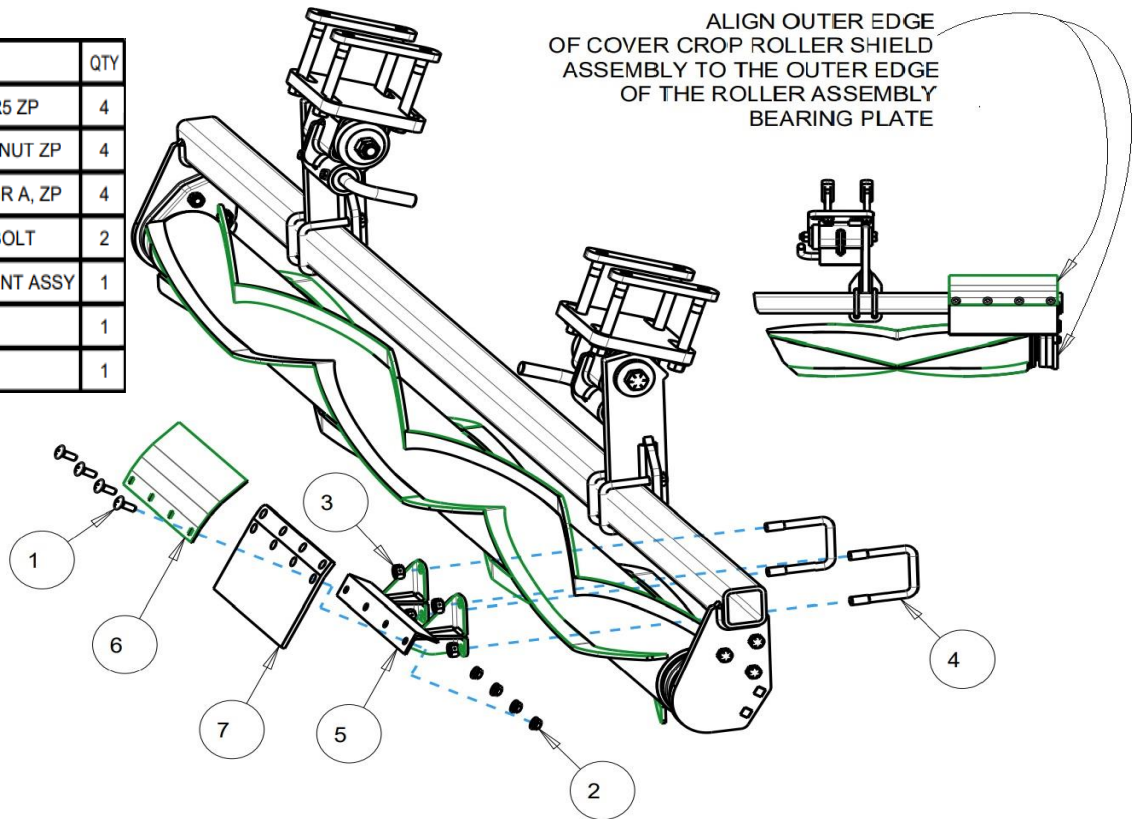


ISO5500-032

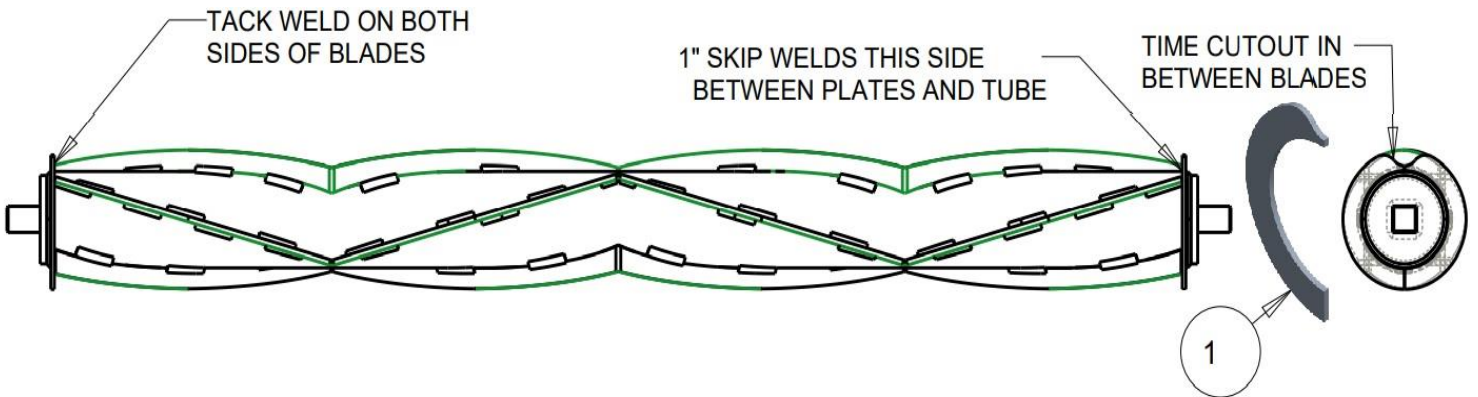
ITEM	PART NO.	DESCRIPTION	QTY
1	2502-322	5/8-11 x 2 HHCS GR 8	8
2	2520-452	5/8-11 HEXNUT ZP	4
3	2520-459	5/8-11 LOCK HEX NUT, GR B, ZP	4
4	2520-506	3/4-10 HEX NUT, GR 8, ZP	4
5	2525-451	5/8 MED. LOCKWASHER ZP.	4
6	2525-501	3/4 MED. LOCKWASHER ZP.	4
7	2526-453	5/8 SAE FLATWASHER ZP	4
8	2570-478	3/4 X 7 X 9 U-BOLT, ZP	2
9	5500-200	EXTENSION BRACKET W.A.	1
10	5500-201	ROLLER MAIN MOUNT W.A.	1

5500-102 PARTS IDENTIFICATION COVER CROP ROLLER SHIELD KIT

ITEM	PART NO.	DESCRIPTION	QTY
1	2505-260	3/8-16 X 1 CARBLT GR5 ZP	4
2	2520-258	3/8-16HEX FLANGE LCK NUT ZP	4
3	2520-357	1/2-13 LOCK HEX NUT, GR A, ZP	4
4	2570-568	1/2 X 2-1/2 X 3-1/2 U-BOLT	2
5	5500-208	ROLLER SHIELD WELDMENT ASSY	1
6	5500-314	SHIELD	1
7	5500-318	FLAP	1



5500-103 PARTS IDENTIFICATION



ITEM	PART NO.	DESCRIPTION	QTY
1	5500-313	COVER CROP ROLLER END PLATE	4

NOTES



A Tradition of Solutions since 1930

Yetter Farm Equipment Co

PO BOX 358 109 S. McDonough

Colchester, IL 62326-0358

Phone: 309-776-4111

Toll Free: 800-447-5777

Email: info@yetterco.com

For updated models and manuals visit the Yetter website:

www.yetterco.com

© Yetter Farm Equipment Co. All Rights Reserved

2565-976_REV_B – 08/2022