



3800 SERIES TOOLBAR

OWNER'S MANUAL

PART IDENTIFICATION

2565-971_REV_A 02/2024



YETTER MANUFACTURING CO.

Founded 1930

Colchester, IL 62326

Toll free: (800)447-5777.

Fax: (309)776-3222

Website: yetterco.com

E-mail: info@yetterco.com

YETTER

TABLE OF CONTENTS

BOLT TORQUE..... 2
FOREWORD..... 3
SAFETY..... 4
INSTALLATION..... 5-6
OPERATION..... 7-8
PARTS IDENTIFICATION..... 6, 9-14

BOLT TORQUE



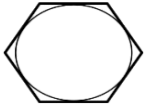


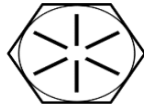
Important: Over-tightening hardware can cause just as much damage as under-tightening. Tightening hardware beyond the recommended range can reduce its shock load capacity.

All hardware is either Grade 5 unless otherwise noted. Grade 5 cap screws are marked with three radial lines on the head. Grade 8 cap screws are marked with six radial lines on the head. If hardware must be replaced, be sure to replace it with hardware of equal size, strength and thread type. Refer to the torque values chart when tightening hardware.

The chart below is a guide for proper torque. Use it unless a specified torque is called out elsewhere in the manual. Torque is the force applied to the end of the handle or cheater bar, times the length of the handle or bar. Tightening hardware beyond the recommended range can reduce its shock load capacity.

Use a torque wrench wherever possible

The following table shows torque in ft.-lbs. for coarse thread hardware.

Bolt Diameter and Threads per Inch	 Grade 2	 Grade 5	 A-325	 Grade 8
1/4	6	10		14
5/16	12	20		30
3/8 – 16	25	35		50
7/16 – 14	35	55		80
1/2 – 13	55	85		125
9/16 – 12	75	125		175
5/8 – 11	105	170		235
3/4-10	185	305		425
7/8 – 9	170	445		690
1-8	260	670		1030
1 1/8 – 7	365	900		1460
1 1/4 - 7	515	1275		2060
1 3/8 – 6	675	1675		2700
1 1/2 - 6	900	2150		3500
1 3/4 – 5	1410	3500		5600

FOREWORD

You've just joined an exclusive but rapidly growing club.

For our part, we want to welcome you to the group and thank you for buying a Yetter product.

We hope your new Yetter products will help you achieve both goals-increase your productivity and increase your efficiency so that you may generate more profit.

This operator's manual has been designed into four major sections: Foreword, Safety Precautions, Installation Instructions and Parts Breakdown.



This **SAFETY ALERT SYMBOL** indicates important safety messages in the manual. When you see this symbol, be alert to the possibility of **PERSONAL INJURY** and carefully read the message that follows.

The word **NOTE** is used to convey information that is out of context with the manual text. It contains special information such as specifications, techniques and reference information of a supplementary nature.

The word **IMPORTANT** is used in the text when immediate damage will occur to the machine due to improper technique or operation.

Important will apply to the same information as specified by note only of an immediate and urgent nature.

It is the responsibility of the user to read the operator's manual and comply with the safe and correct operating procedure and to lubricate and maintain the product according to the maintenance schedule in the operator's manual.

The user is responsible for inspecting his machine and for having parts repaired or replaced when continued use of the product would cause damage or excessive wear to the other parts.

It is the user's responsibility to deliver his machine to the Yetter dealer who sold him the product for service or replacement of defective parts, which are covered by the warranty policy.

If you are unable to understand or follow the instructions provided in this publication, consult your local Yetter dealer or contact:

YETTER MANUFACTURING CO.

309/776-4111

800/447-5777

309/776-3222 (FAX)

Website: www.yetterco.com

E-mail: info@yetterco.com

WARRANTY

Yetter Manufacturing warrants all products manufactured and sold by it against defects in material. This warranty being expressly limited to replacement at the factory of such parts or products as shall appear to be defective after inspection. This warranty does not obligate the Company to bear cost of labor in replacement of parts. It is the policy of the Company to make improvements without incurring obligations to add them to any unit already sold. No warranty is made or authorized to be made, other than herein set forth. This warranty is in effect for one year after purchase.

DEALER: _____

Yetter Manufacturing warrants its own products only and cannot be responsible for damages to equipment on which mounted.

BE ALERT!

YOUR SAFETY IS INVOLVED



WATCH FOR THIS SYMBOL. IT POINTS OUT IMPORTANT SAFETY PRECAUTIONS. IT MEANS “ATTENTION – BE ALERT!”

It is your responsibility as an owner, operator, or supervision to know and instruct everyone using this machine at the time of initial assignment and at least annually thereafter, of the proper operation, precautions, and work hazards which exist in the operation of the machine in accordance with OSHA regulations.

Safety Is No Accident



The following safety instructions, combined with common sense, will save your equipment from needless damage and the operator from unnecessary exposure to personal hazard. Pay special attention to the caution notes in the text. Review this manual at least once a year with all operators.

1. Read and understand the operator's manual before operating this machine. Failure to do so is considered a misuse of the equipment.
2. Make sure equipment is secure before operating.
3. Always keep children away from equipment when operating.
4. Make sure everyone that is not directly involved with the operation is out of the work area before beginning operation.
5. Make sure all safety devices, shields, and guards are in place and functional before beginning operation
6. Shut off all power to adjust, service, or clean.
7. Keep hands, feet, and clothing away from moving parts. It is a good idea to remove all jewelry before operating.
8. Inspect the machine periodically during operation for signs of excessive wear, loose fasteners, and unusual noises.

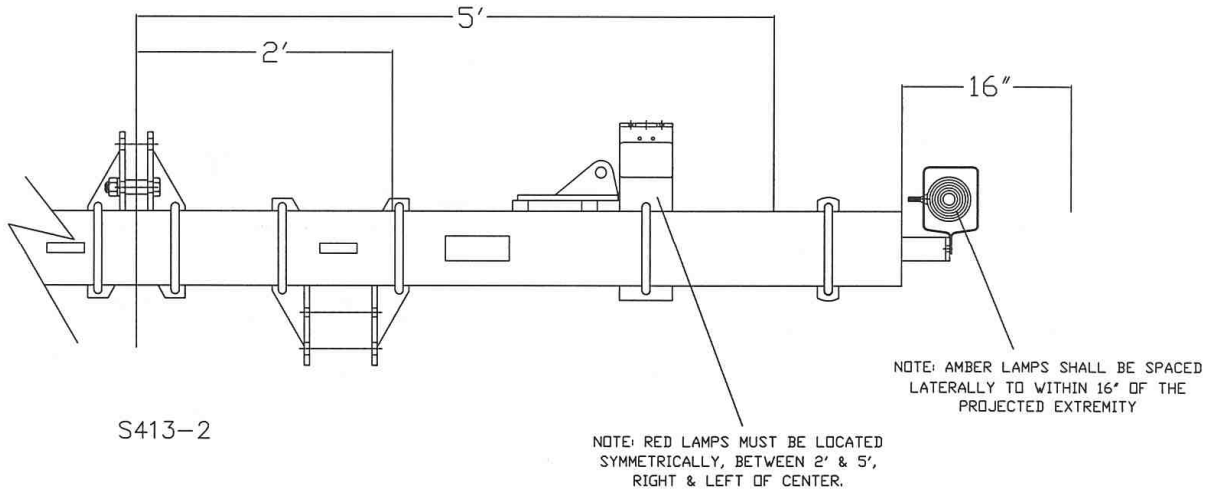
3800 SERIES

SAFETY EQUIPMENT ASSEMBLY

SAFETY LIGHTING



Attach safety lighting to the toolbar frame, install the wiring harness and secure to the frame with the cable ties.



SMV ASSEMBLY

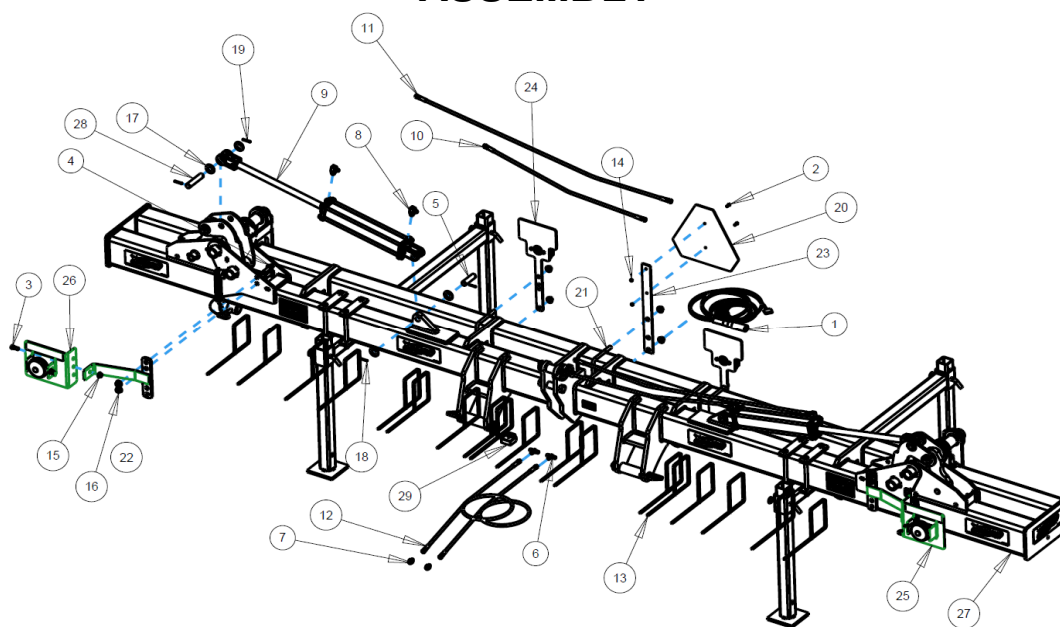
1. Mount SMV emblem as shown with point of triangle up as near operators left of center as possible. Face so emblem is visible from rear of equipment.

IMPORTANT: Be sure to purge the air from the hydraulic cylinders. This insures smooth wing operation.



CAUTION STAND CLEAR OF FOLDING WINGS

ASSEMBLY



ITEM	PART NO.	DESCRIPTION	QTY
1	1300-446	HARNASS. COMMON WIRING	1
2	2502-105	1/4-20 X 3/4 HHCS GR 5 ZP	2
3	2502-293	1/2-13 X 1-1/4 HHCS GR5 ZP	2
4	2505-402	5/8-11 X 2" CAR. BLT. GR.5 ZP.	4
5	2515-172	CYLINDER CLEVIS PIN, ZP	2
6	2515-326	TEE, -6 / -6 / -6 JIC	2
7	2515-327	ADAPTOR, 3/4-16 SAE TO -6 JIC (6400-06-08)	2
8	2515-330	90 DEG., 3/4 SAE TO -6 JIC	4
9	2515-336	3 X 16 ASAE CYLINDER (SAE)	2
10	2515-357	HOSE, .25 X 40" W/-6 FEMALE JIC ENDS	2
11	2515-359	HOSE, 1/4 X 60" W/-6 JIC ENDS	2
12	2515-363	HOSE, 1/4 X 80" W/-6 JIC ENDS	2
13	2515-405	CABLE TIE, .5" X 40.5", BLACK	18
14	2520-152	1/4-20 LOCK HEX NUT ZP	2
15	2520-361	1/2-13 FLANGE WHZLCK HXNT, GR 5, ZP	2
16	2520-464	5/8-11 WHIZLOCK HEX NUT, GR 2, ZP	10
17	2526-542	1" SAE FLAT WASHER ZP	8
18	2530-108	3/16 X 1-1/2 ROLL PIN ZP	4
19	2530-157	1/4 X 1-3/4 ROLL PIN ZP	4
20	2570-472	SMV EMBLEM WITH BACKING	1
21	2570-778	5/8 X 7 X 6 U-BOLT	3
22	3400-227	LIGHT BRACKET W.A., AMBER LAMP	2
23	3400-377	STRAIGHT SMV BRACKET	1
24	3800-120	RED LIGHT BRACKET ASSEMBLY	2
25	3800-121	AMBER LIGHT BRACKET ASSEMBLY, LH	1
26	3800-122	AMBER LIGHT BRACKET ASSEMBLY, RH	1
27	3820-171A	20 FT. FOLDING HEAVY DUTY TOOLBAR ASSEMBLY	1
28	3820-306	CYLINDER CLEVIS PIN	2
29	RE152269	MODULE, IMPLEMENT TURN SIGNAL	1

ATTACHING 3800 TOOLBAR TO TRACTOR

CAUTION: BEFORE ATTACHING TO TRACTOR, BE SURE HITCH PINS ARE COMPLETELY ASSEMBLED TO MATCH YOUR TRACTOR HITCH.



CAUTION: MAKE CERTAIN THAT CENTER LINK AND QUICK COUPLER ARE LOCKED AND LOCK PINS ARE PROPERLY INSTALLED BEFORE MOVING.

Detaching from Tractor



CAUTION: To avoid injury from escaping hydraulic oil under pressure, relieve the pressure in the system before removing hoses from breakaway couplers.

IMPORTANT: To prevent possible tipping, install parking stands on toolbar before disconnecting from tractor.

FIELD OPERATION

PRE-OPERATION CHECK LIST:

Use this checklist each time you operate the 3800 Toolbar in the field. It will help you obtain satisfactory field operation quickly.

1. Tractor sway blocks in upper position.
2. Center link adjusted for level frame in field operation.
3. Tractor lift links set in lateral float.
4. Hitch pins fastened and correct spacers used.
5. Quick couplers latched.
6. Adequate ballast added to front of tractor.

MAIN FRAME HEIGHT

Without gauge wheels, set the tractor rockshaft control lever to obtain the desired frame height.

LEVELING MAIN FRAME

Adjust lift links and center link as necessary to make frame level and perpendicular to the ground.

Before activating/folding hinge check for obstructions, especially check gauge wheel positions to ascertain proper tractor and cab clearance.

NOTE: If gauge wheels are to be used, make leveling adjustments after gauge wheels are installed.

WING LOCKS

To lock wings rigid, unfold the wings and put collar over the wing lock stud. Then install the pin through the collar and stud to secure.



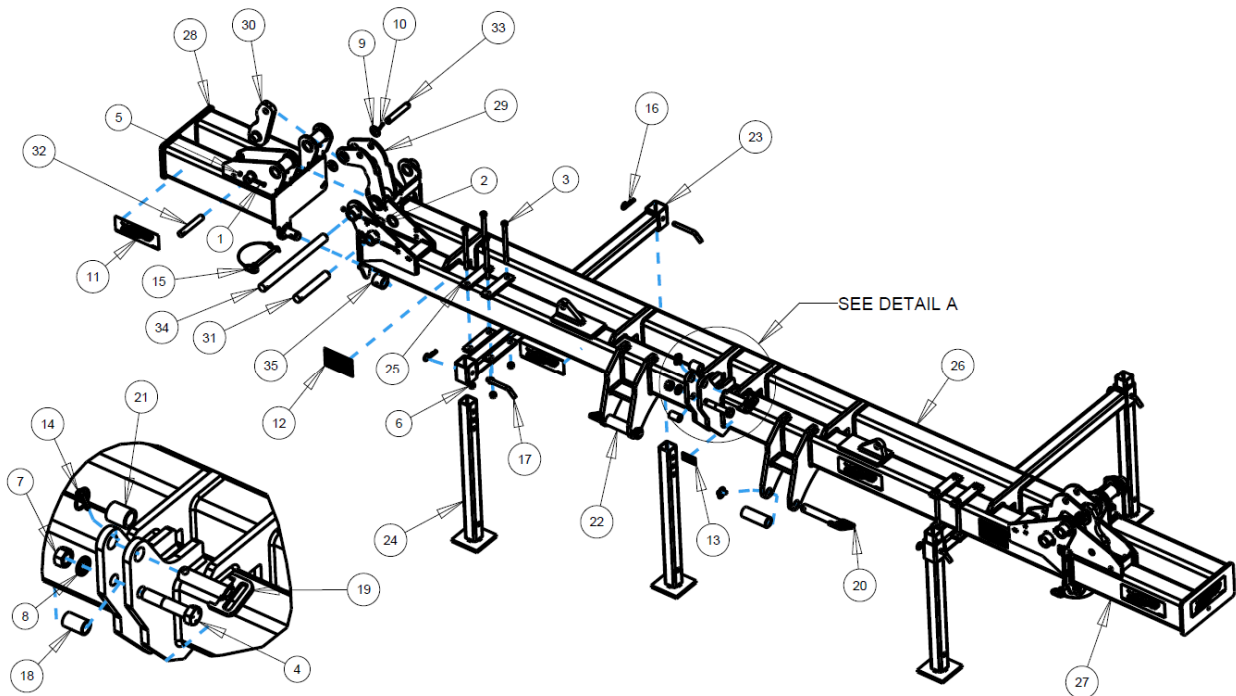
CAUTION: ALWAYS FOLLOW ALL STATE, FEDERAL, AND LOCAL LAWS WHEN TRANSPORTING 3800 TOOLBAR ON PUBLIC ROADS.

TROUBLE SHOOTING

Problem	Cause	Solution
Hydraulic cylinders fail to operate properly	Hydraulic system improperly installed Air in system Blocked restrictors	Check for correct assembly of the hydraulic system Check for air in the hydraulic system and purge system Check restrictors for malfunctions

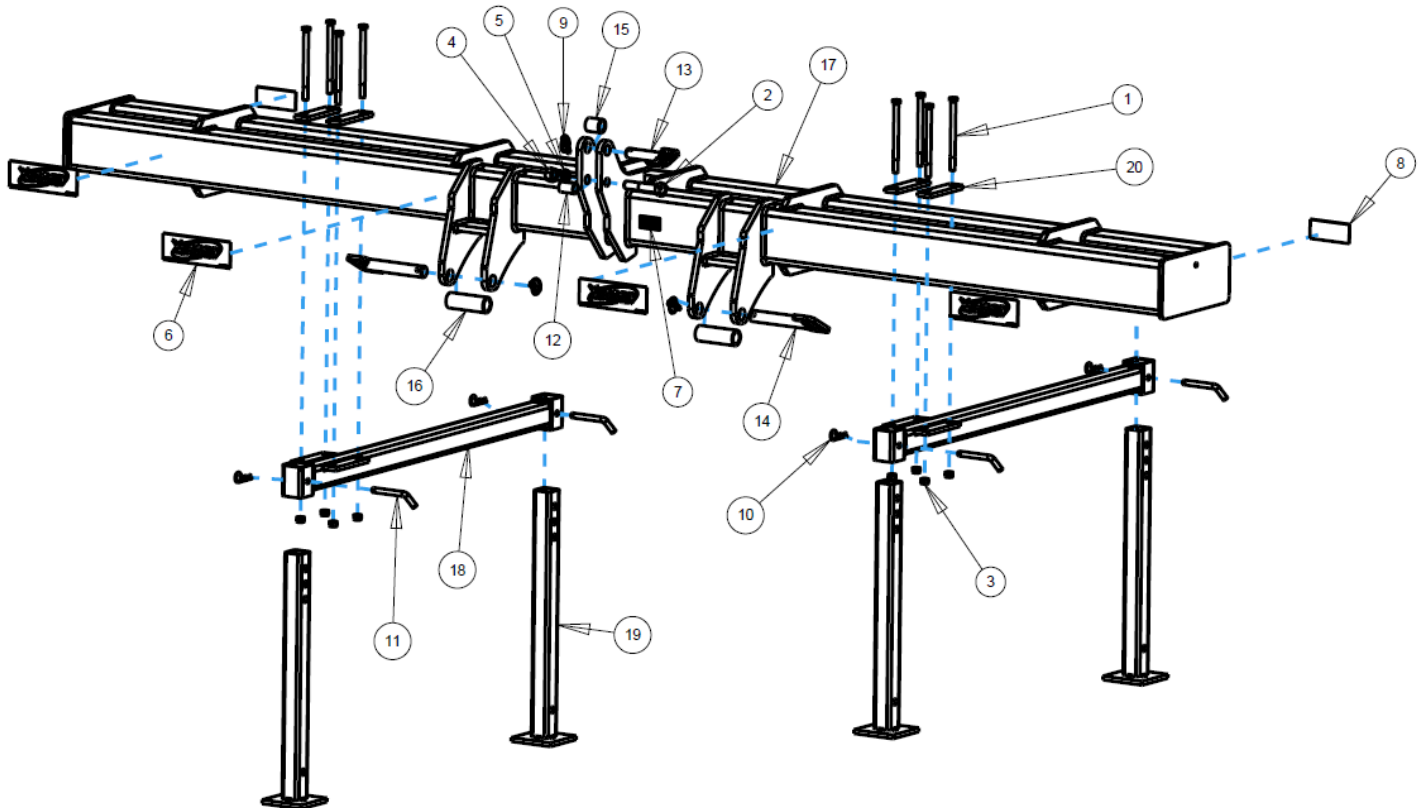
PARTS IDENTIFICATION 3820-171

ITEM	PART NO.	DESCRIPTION	QTY
1	2502-240	3/8-16 X 2 HHCS GR5 ZP	2
2	2502-251	3/8-16 X 3 HHCS GR8 ZP	4
3	2502-333	5/8-11 X 9 HHCS GR. 5 ZP	8
4	2502-770	1-8 X 5 HHCS GR. 5 ZP	1
5	2520-255	3/8-16 LOCK HEX NUT, GR A, ZP	6
6	2520-459	5/8-11 LOCK HEX NUT, GR B, ZP	8
7	2520-555	1-8 HEX NUT ZP	1
8	2525-550	1" MED. LOCKWASHER ZP.	1
9	2526-542	1" SAE FLAT WASHER ZP	4
10	2530-157	1/4 X 1-3/4 ROLL PIN ZP	4
11	2565-058	YET FRM EQUI DE 3-7/16X10-5/16	10
12	2565-159	FOLDING WING CAUTION DECAL	2
13	2565-466	PRODUCT ID PLATE	1
14	2570-454	KLIK PIN DANUSER #7524	3
15	2570-457	LOOP GRIP CLEVIS PIN	2
16	2570-465	7 GA. HAIRPIN COTTER ZP	4
17	2570-748	BENT-PULL CLEVIS PIN ZP	4
18	3400-312	UPPER HITCH PIPE	1
19	3560-206	UPPER HITCH PIN W.A., HD	1
20	3560-207	LOWER HITCH PIN W.A., HD	2
21	3560-303	60' UPPER HITCH BUSHING, ZP	1
22	3560-304	60' BUSHING (LONG), ZP	2
23	3815-201	DOUBLE PARKING STAND W.A.	2
24	3815-202	STAND LEG W.A.	4
25	3815-306	CLAMP STRAP 5"	4
26	3820-200	20' HEAVY DUTY CENTER SECTION W.A.	1
27	3820-201	SHORT WING W.A., LH	1
28	3820-202	SHORT WING W.A., R.H.	1
29	3820-203	WING UPPER STOP LINK W.A.	2
30	3820-204	WING CONNECTING LINK W.A.	2
31	3820-300	LOWER LINK PIVOT PIN	2
32	3820-307	WING LINK PIVOT PIN	2
33	3820-310	UPPER LINK PIN	2
34	3820-320	MAIN HINGE PIN	2
35	3820-328	WING LOCK BUSHING	2



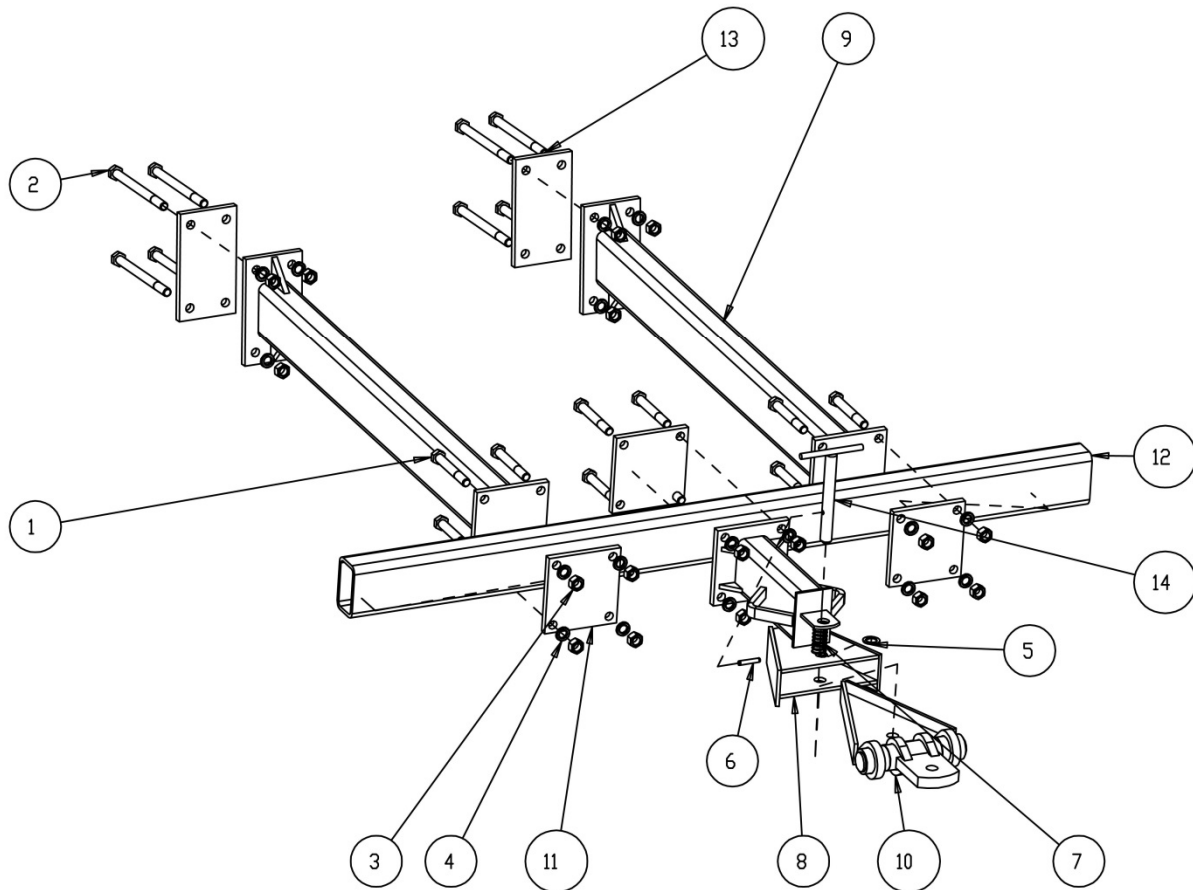
PARTS IDENTIFICATION 3815-171

ITEM	PART NO.	DESCRIPTION	QTY
1	2502-333	5/8-11 X 9 HHCS GR. 5 ZP	8
2	2502-770	1-8 X 5 HHCS GR. 5 ZP	1
3	2520-459	5/8-11 LOCK HEX NUT, GR B, ZP	8
4	2520-555	1-8 HEX NUT ZP	1
5	2525-550	1" MED. LOCKWASHER ZP.	1
6	2565-058	YET FRM EQUI DE 3-7/16X10-5/16	4
7	2565-466	PRODUCT ID PLATE	1
8	2565-822	YETTER DECAL	2
9	2570-454	KLIK PIN DANUSER #7524	3
10	2570-465	7 GA. HAIRPIN COTTER ZP	4
11	2570-748	BENT-PULL CLEVIS PIN ZP	4
12	3400-312	UPPER HITCH PIPE	1
13	3560-206	UPPER HITCH PIN W.A., HD	1
14	3560-207	LOWER HITCH PIN W.A., HD	2
15	3560-303	60' UPPER HITCH BUSHING, ZP	1
16	3560-304	60' BUSHING (LONG), ZP	2
17	3815-200	15' RIGID DOUBLE FRAME W.A.	1
18	3815-201	DOUBLE PARKING STAND W.A.	2
19	3815-202	STAND LEG W.A.	4
20	3815-306	CLAMP STRAP 5"	4



PARTS IDENTIFICATION

3800-110 HITCH KIT

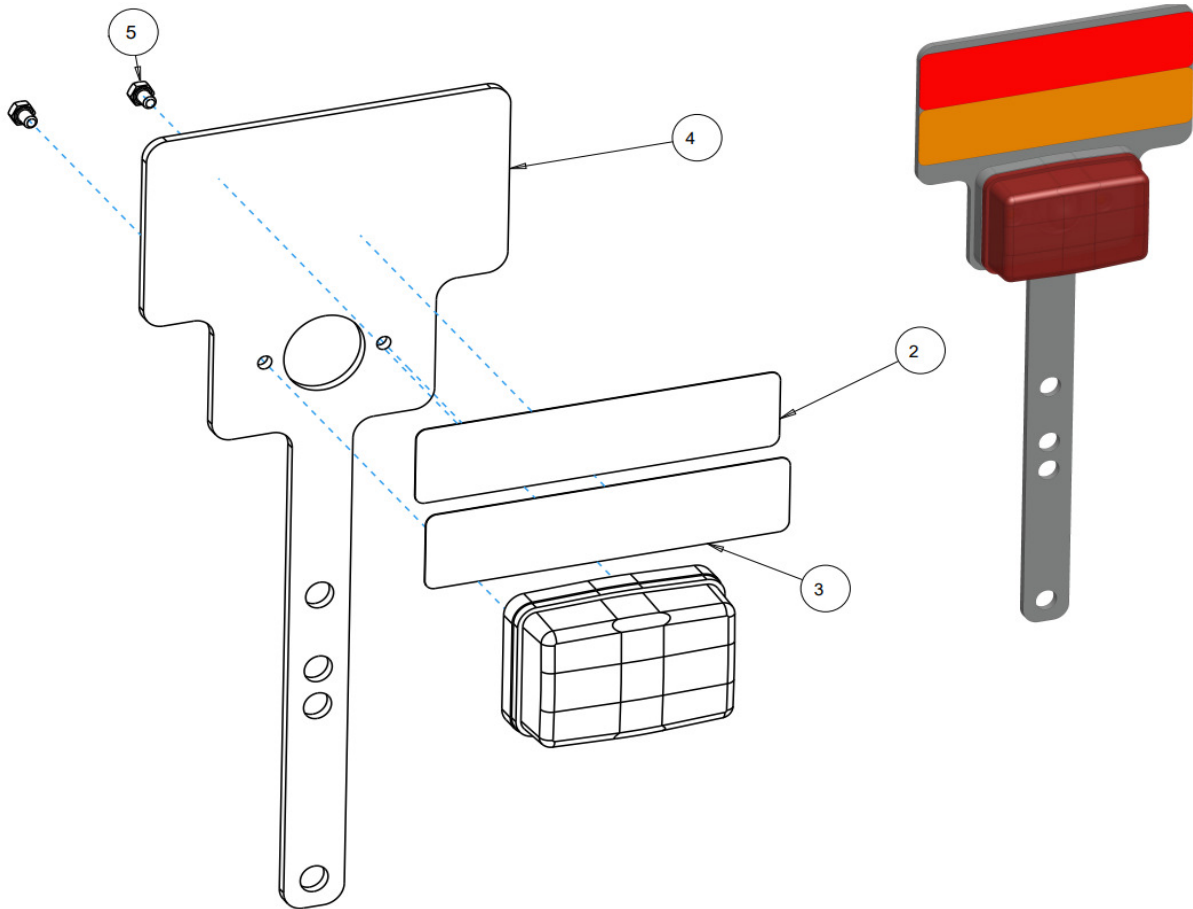


ITEM	PART NO.	DESCRIPTION	QTY
1	2502-508	3/4-10 X 5-1/2 HHCS GR5ZYD	12
2	2502-516	3/4-10 X 9-1/2 HHCS GR5 ZP	8
3	2520-504	3/4-10 HEX NUT ZP	20
4	2525-501	3/4 MED. LOCKWASHER ZP.	20
5	2527-550	1"ID X1-1/2OD X14GA MACH	1
6	2530-212	3/8 X 2 ROLL PIN ZP	1
7	2550-761	THROW OUT CLUTCH SPRING, BLACK	1
8	3800-200	REAR HITCH W.A.	1
9	3800-201	HITCH EXTENSION W.A.	2
10	3800-204	PULLRING ASSEMBLY W.A.	1
11	3800-300	MOUNT PLATE	3
12	3800-302	72" CROSS TUBE	1
13	3800-312	HITCH MOUNT PLATE	2
14	8000-220	HITCH PIN	1

PARTS IDENTIFICATION

3800-120 RED LIGHT ASSEMBLY

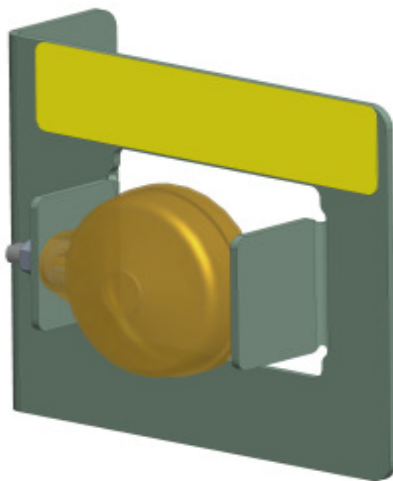
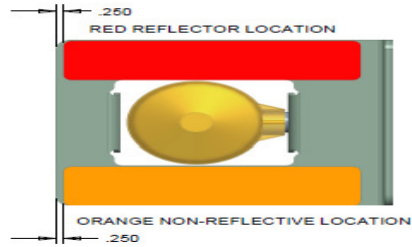
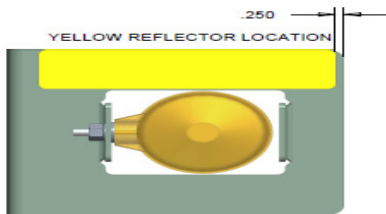
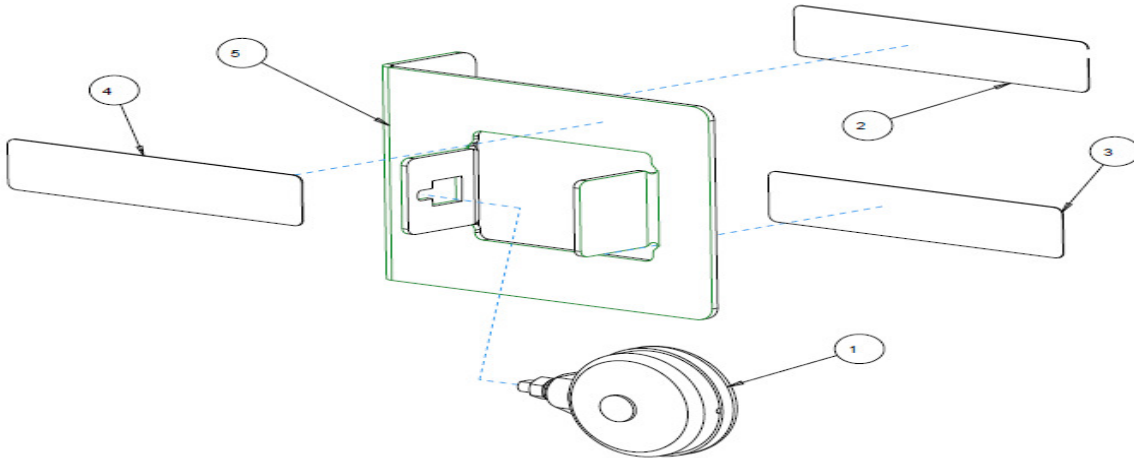
ITEM	PART NO.	DESCRIPTION	QTY.
1	1300-447	LAMP, RED	1
2	2565-459	RED REFLECTOR	1
3	2565-460	NONREFLECTIVE RED-ORANGE FLUORESCENT	1
4	3800-326	LIGHT BRACKET, RED LAMP	1
5	19M7297	M8 X 12MM CAP SCREW GRADE 5	2



PARTS IDENTIFICATION

3800-121 AMBER LIGHT ASSEMBLY, LEFT HAND

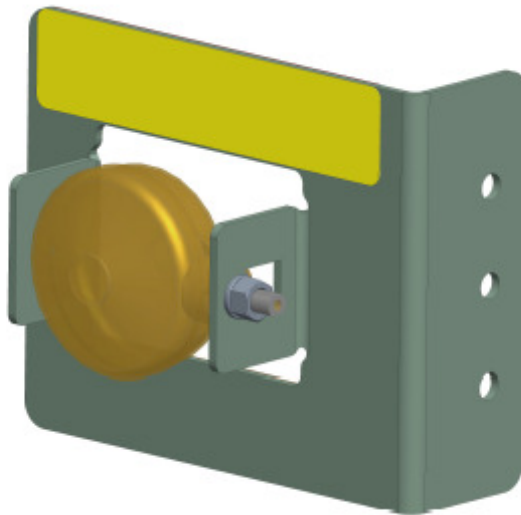
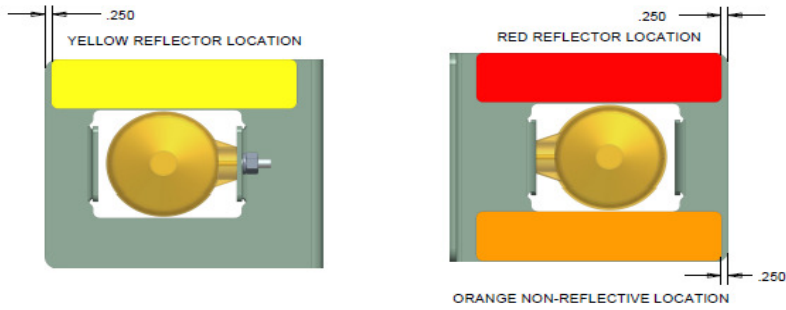
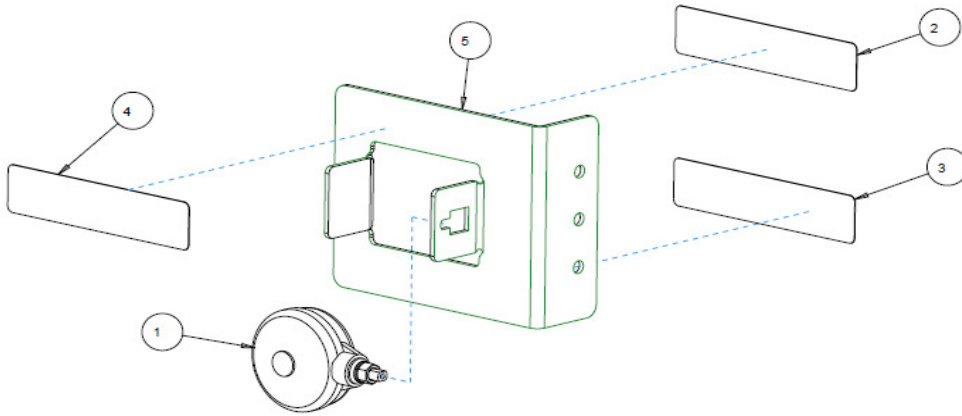
ITEM	PART NO.	DESCRIPTION	QTY.
1	1300-448	LAMP, AMBER	1
2	2565-459	RED REFLECTOR	1
3	2565-460	NONREFLECTIVE RED-ORANGE FLUORESCENT	1
4	2565-813	YELLOW REFLECTOR	1
5	3800-327	AMBER LIGHT BRACKET	1



PARTS IDENTIFICATION

3800-122 AMBER LIGHT ASSEMBLY, RIGHT HAND

ITEM	PART NO.	DESCRIPTION	QTY.
1	1300-448	LAMP, AMBER	1
2	2565-459	RED REFLECTOR	1
3	2565-460	NONREFLECTIVE RED-ORANGE FLUORESCENT	1
4	2565-813	YELLOW REFLECTOR	1
5	3800-327	AMBER LIGHT BRACKET	1



NOTES:



A Tradition of Solutions since 1930

Yetter Farm Equipment Co

PO BOX 358 109 S. McDonough

Colchester, IL 62326-0358

Phone: 309-776-4111

Toll Free: 800-447-5777

Email: info@yetterco.com

For updated models and manuals visit the Yetter website:

www.yetterco.com

© Yetter Farm Equipment Co. All Rights Reserved

2565-971_REV_A – 02/2024