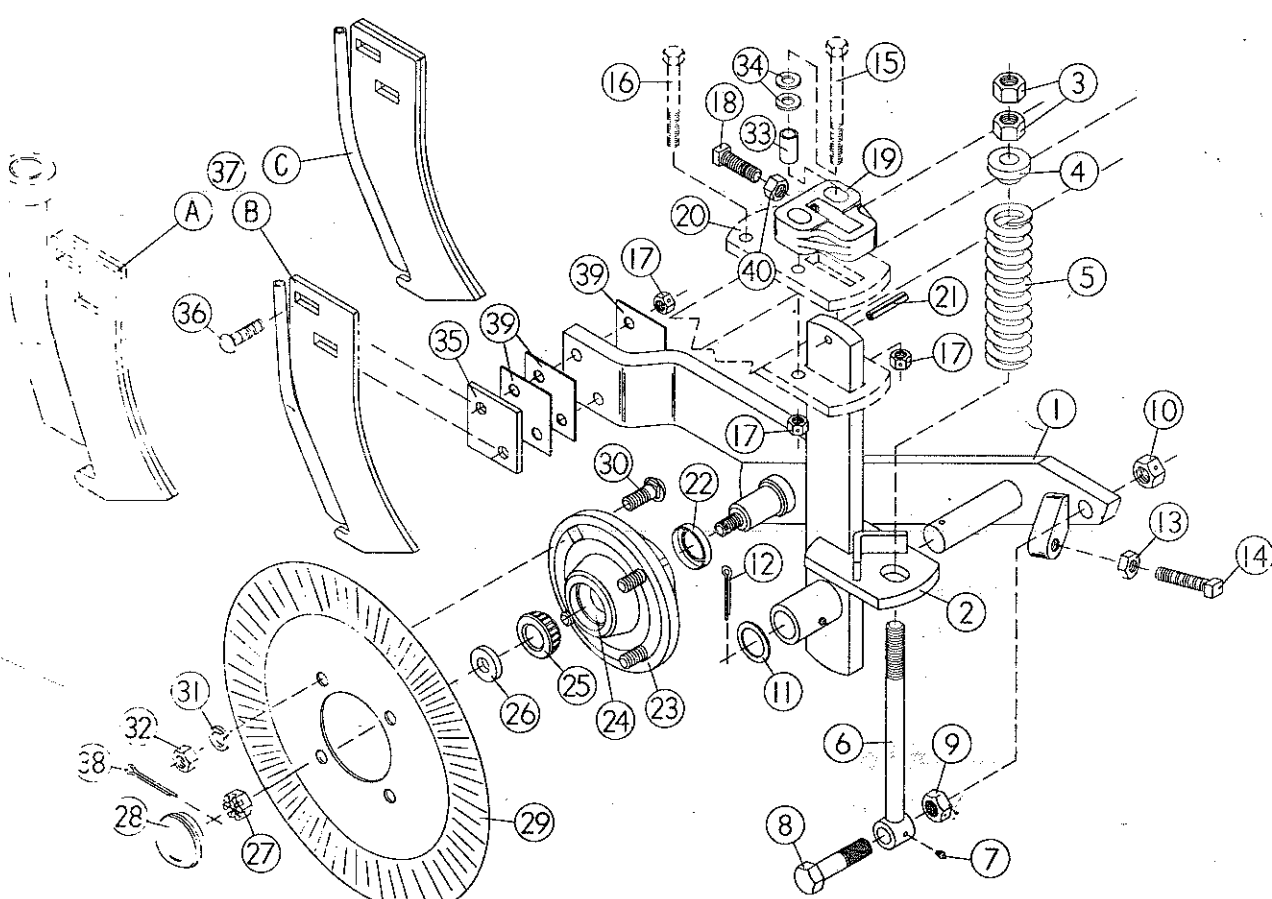


PARTS IDENTIFICATION

2970-101 & 2970-110

(Includes the following parts)

Key	Qty.	Part No.	Description	Key	Qty.	Part No.	Description
1	1	2970-200	R.H. Fertilizer Coulter Arm W.A.	18	1	2503-387	5/8—11 x 1-3/4, Sq. Hd. Cup Point Set Scr. Gr.2 Zp.
2	1	2970-201	R.H. Coulter Adjustment Bar W.A. 16" Shank	19	1	2970-315	Clamp, Fertilizer Coulter
	1	2970-221	Coulter Adjustment Bar, 23" Shank	20	2		See Appropriate Clamp List
3	2	2520-500	3/4—10 Hex Nut, Black	21	1	2530-212	3/8 x 2 Roll Pin Zp.
4	1	2555-112	2910 Spring Bushing Cast.	22	1	2550-115	Seal
5	1	2550-708	7/16 Wire, 2-1/8 O. D. x 1-1/4 I.D. x 7-1/4 Comp. Spring	23	1	2900-105	Hub Pressed Assembly
6	1	2970-205	Fertilizer Coult. Push Rod W.A.	24	2	2550-029	Cup (Pre-Assem W/No. 23)
7	3	2533-110	1/4—28 Zerk, Straight Self-tap	25	2	2550-027	Cone
8	1	2501-515	3/4—16 x 3 Hex. Hd. Capsc. Gr.5, Black	26	1	2526-449	5/8 Flatwasher x 1/4 ± .010 Thick
9	1	2520-509	3/4—16 Hex Jam Nut, Black	27	1	2520-469	5/8—18 Slotted Hex Nut, Black
10	1	2520-510	3/4—16 Lock Hex Nut, Black	28	1	2570-375	Hub Cap
11	1	2526-561	1-17/64 I.D. x 1-7/8 O.D. x 14 Ga. M.B., Black	29	1	2571-158	17" Ripple Coulter, .157 Ga.
12	1	2531-151	1/4 x 1-3/4 Cotter Key, Black	30	4	2505-339	1/2—13 x 1-1/2 Car. Blt. Gr.5 Zp.
13	1	2520-453	5/8—11 Hex Jam Nut Zp.	31	4	2525-352	1/2 Med. Lockwasher Zp.
14	1	2510-229	5/8—11 x 2-1/2 Sq. Hd. Cup Point Set Scr. Zp.	32	4	2520-352	1/2—13 Hex Nut Zp.
15	2		See Appropriate Clamp List	33	2	2970-316	Clamp Bushing
16	2		See Appropriate Clamp List	34	4	2526-351	1/2 Std. Flatwasher Zp.
17	6	2520-357	1/2—13 Hex Lock Nut Zp.	35	1	2970-319	Knife Shim, 1/8
				36	2	2505-345	1/2—13 x 2 Car. Blt. Gr.5 Zp.
				37A	1	2970-216	Dry Fertilizer Knife W.A.
				37B	1	2970-218	Liquid Fertilizer Knife W.A.
				37C	1	2970-219	Suspension Knife W.A.
				38	1	2531-102	1/8 x 1-1/4 Cotter Pin Blk.
				39	3	2970-320	Knife Shim, 16 Ga.
				40	1	2520-452	5/8—11 Hex Nut Zp.



2570-527