



2910-130-HD HEAVY DUTY COULTER

OPERATOR'S MANUAL
PART IDENTIFICATION
2565-743_REV_A • 11/2016



YETTER MANUFACTURING CO.
FOUNDED 1930

Colchester, IL 62326-0358
Toll free: 800/447-5777
309/776-3222 (Fax)
Website: www.yetterco.com
E-mail: info@yetterco.com

YETTER

FOREWORD

You've just joined an exclusive but rapidly growing club.

For our part, we want to welcome you to the group and thank you for buying a Yetter product.

We hope your new Yetter products will help you achieve both goals-increase your productivity and increase your efficiency so that you may generate more profit.

This operator's manual has been designed into four major sections: Foreword, Safety Precautions, Installation Instructions and Parts Breakdown.



This **SAFETY ALERT SYMBOL** indicates important safety messages in the manual. When you see this symbol, be alert to the possibility of **PERSONAL INJURY** and carefully read the message that follows.

The word **NOTE** is used to convey information that is out of context with the manual text. It contains special information such as specifications, techniques and reference information of a supplementary nature.

The word **IMPORTANT** is used in the text when immediate damage will occur to the machine due

to improper technique or operation. Important will apply to the same information as specified by note only of an immediate and urgent nature.

It is the responsibility of the user to read the operator's manual and comply with the safe and correct operating procedure and to lubricate and maintain the product according to the maintenance schedule in the operator's manual.

The user is responsible for inspecting his machine and for having parts repaired or replaced when continued use of the product would cause damage or excessive wear to the other parts.

It is the user's responsibility to deliver his machine to the Yetter dealer who sold him the product for service or replacement of defective parts, which are covered by the warranty policy.

If you are unable to understand or follow the instructions provided in this publication, consult your local Yetter dealer or contact:

YETTER MANUFACTURING CO.

309/776-4111

800/447-5777

309/776-3222 (FAX)

Website: www.yetterco.com

E-mail: info@yetterco.com

WARRANTY

Yetter Manufacturing warrants all products manufactured and sold by it against defects in material. This warranty being expressly limited to replacement at the factory of such parts or products as shall appear to be defective after inspection. This warranty does not obligate the Company to bear cost of labor in replacement of parts. It is the policy of the Company to make improvements without incurring obligations to add them to any unit already sold. No warranty is made or authorized to be made, other than herein set forth. This warranty is in effect for one year after purchase.

DEALER: _____

Yetter Manufacturing warrants its own products only and cannot be responsible for damages to equipment on which mounted.

SAFETY

A brief description of signal words that may be used in this manual:

CAUTION: Used as a general reminder of good safety practices or to direct attention to unsafe practices.

WARNING: Denotes a specific potential hazard.

DANGER: Denotes the most serious specific potential hazard.

SAFETY PRECAUTIONS

You can make your farm a safer place to live and work if you observe the safety precautions given. Study these precautions carefully and insist that those working with you and for you follow them.

Finally, remember this: an accident is usually caused by someone's carelessness, neglect or oversight.



WARNING

Never clean, lubricate or adjust a machine that is in motion. Always lower or block the implement before performing service.

If the machine must be serviced in the raised position, jack or block it up to prevent it from accidentally falling and injuring someone.

Do not allow riders on the tractor or implement.

Use speeds and caution dictated by the terrain being traversed. Do not operate on any slope steep enough to cause tipping or loss of control.

Be sure all personnel are clear of the immediate area before operating.

Read and understand the operator's manual and require all other persons who will operate the equipment to do the same.

Be familiar with all tractor and implement controls and be prepared to stop engine and implements quickly in an emergency.



CAUTION

Consult your implement and tractor operator's manual for correct and safe operating practices.

Beware of towed implement width and allow safe clearance.

FAILURE TO HEED MAY RESULT IN PERSONAL INJURY OR DEATH.

BOLT TORQUE

Mounting bolts and hardware

Before operating the 2910-130-HD Coulter for the first time, check to be sure that all hardware is tight. Check all hardware again after approximately 50 hours of operation and at the beginning of each planting season.

All hardware used on the 2910-130-HD Coulter is Grade 5 unless otherwise noted. Grade 5 cap screws are marked with three radial lines on the head. If hardware must be replaced, be sure to replace it with hardware of equal size, strength and thread type. Refer to the torque values chart when tightening hardware.







Important: Over tightening hardware can cause as much damage as when under tightening. Tightening hardware beyond the recommended range can reduce its shock load capacity.

The chart below is a guide for proper torque. Use it unless a specified torque is called out elsewhere in the manual.

Torque is the force you apply to the wrench handle or the cheater bar, times the length of the handle or bar.

Use a torque wrench whenever possible.

The following table shows torque in ft. lbs. for coarse thread hardware.

| BOLT DIA. AND THREADS PER INCH |  GRADE 2 |  GRADE 5 OR  A-325 |  GRADE 8 |
|--------------------------------|---|---|---|
| 3/8-16 | 25 | 35 | 50 |
| 7/16-14 | 35 | 55 | 80 |
| 1/2-13 | 55 | 85 | 125 |
| 9/16-12 | 75 | 125 | 175 |
| 5/8-11 | 105 | 170 | 235 |
| 3/4-10 | 185 | 305 | 425 |
| 7/8-9 | 170 | 445 | 690 |
| 1-8 | 260 | 670 | 1030 |
| 1 1/8-7 | 365 | 900 | 1460 |
| 1 1/4-7 | 515 | 1275 | 2060 |
| 1 3/8-6 | 675 | 1875 | 2700 |
| 1 1/2-6 | 900 | 2150 | 3500 |
| 1 3/4-5 | 1410 | 3500 | 5600 |

Lubricate all bearings and moving parts as assembled and make certain that they work freely.



WARNING: Never work around the toolbar/implement while in a raised position without using safety lockups.



CAUTION: The coulter disc attachments are very heavy. Pay extra attention to lifting techniques while handling and or maneuvering the opener during assembly. Failure to do so may lead to personal injury.

YETTER 2910-130-HD HEAVY DUTY COULTER

CLAMPS

(DIMENSIONS ARE INCHES HORIZONTAL X VERTICAL)

| <i>Part No.</i> | <i>Description</i> |
|-----------------|------------------------------------|
| 2975-151 | Clamp Kit, 3 X 6 Bar |
| 2990-153 | Clamp Kit, 2" Sq. Bar |
| 2990-154 | Clamp Kit, 2 1/2" Sq. Bar |
| 2990-155 | Clamp Kit, 2 x 6 Bar |
| 2990-156 | Clamp Kit, 4 x 4 Bar |
| 2990-157 | Clamp Kit, 5 x 7 Bar |
| 2990-158 | Clamp Kit, 7 x 7 Bar |
| 2990-159 | Clamp Kit, 3" Dmd Bar |
| 2990-160 | Clamp Kit, 3 1/2" Dmd Bar |
| 2990-161 | Clamp Kit, 3 x 7 Bar |
| 2990-162 | Clamp Kit, 2 1/2" Sq., 1/2" Spacer |
| 2990-163 | Clamp Kit, 3" Sq. Bar |
| 2990-166 | Clamp Kit, 2 1/4", 2 1/2" Dmd Bar |
| 2990-171 | Clamp Kit, 3 x 4 Bar |
| 2990-172 | Clamp Kit, 4 x 6 Bar |
| 2990-173 | Clamp Kit, 6 x 4 Bar |
| 2990-174 | Clamp Kit, 7 x 5 Bar |
| 2990-175 | Clamp Kit, 7 x 4 Bar |
| 2990-181 | Clamp Kit, 4 x 10 Special |
| 2990-182 | Clamp Kit, 4 x 7 Bar |
| 2999-120 | Clamp, Air Seeder |
| 6300-105 | Clamp Kit, 5 x 5 Bar |

SHANKS

(TOTAL LENGTH OF SHANK IN INCHES)

| <i>Part No.</i> | <i>Description</i> |
|-----------------|--------------------------------|
| 2990-208 | Shank, 12 5/8" Long, 3" Offset |
| 2990-221 | Shank, 27" Long, 3" Offset |
| 2990-310 | Shank, 12 5/8" |
| 2990-318 | Shank, 16" |
| 2990-328 | Shank, 26" |
| 2990-342 | Shank, 18" Long, 3/4" Offset |
| 2990-350 | Shank, 27 1/8" |
| 2990-353 | Shank, 22" Long, 3/4" Offset |
| 2990-354 | Shank, 18" Long, 5 1/2" Offset |
| 2990-370 | Shank, 30" Long, Straight |
| 2990-377 | Shank, 15" Long, 5 1/2" Offset |
| 3010-303 | Shank, 22", Straight |
| 3011-302 | Shank, 22" Long, 5 1/2" Offset |
| 6300-331 | Shank, 19" Long, 3/4" Offset |

BLADES

| PART NO. | DESCRIPTION | PART NO. | DESCRIPTION |
|----------|--------------------------------|----------|--------------------------------|
| 2571-164 | 14-5/8" Wave Blade (8 Wave) | 2571-154 | 18" Wavy Blade (8 Wave) |
| 2571-166 | 14-5/8" 25 Multi-Wave Blade | 2571-155 | 18" 13 Wave Blade |
| 2571-153 | 16" Bubble Flute Blade | 2571-179 | 18" Multi-Wave Blade (25 Wave) |
| 2571-161 | 16" Ripple Blade | 2571-169 | 18" Smooth Blade |
| 2571-156 | 16" Wavy Blade (8 Wave) | 2571-076 | 20" Ripple Blade |
| 2571-162 | 16" 13 Wave Blade | 2571-178 | 20" Smooth Blade |
| 2571-172 | 16" Multi-Wave Blade (25 Wave) | 2571-198 | 20" Notched Blade |
| 2571-206 | 16" Smooth Blade | 2571-201 | 20" Notched Bubble Blade |
| 2571-158 | 17" Ripple Blade | 2571-202 | 20" Multi-Wave Blade (25 Wave) |
| 2571-165 | 17" Notched Smooth Blade | | |

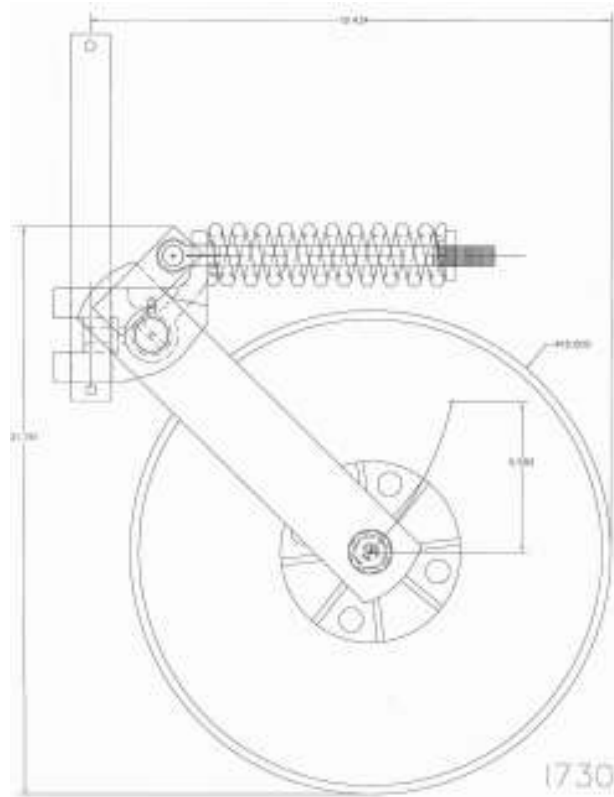
OPTIONAL EQUIPMENT

2975-120 Gauge Wheel Kit

2910-114 LIQUID FERTILIZER INJECTION KIT

2910-135 LIQUID FERTILIZER INJECTION KIT

2910-130-HD



INSTALLATION

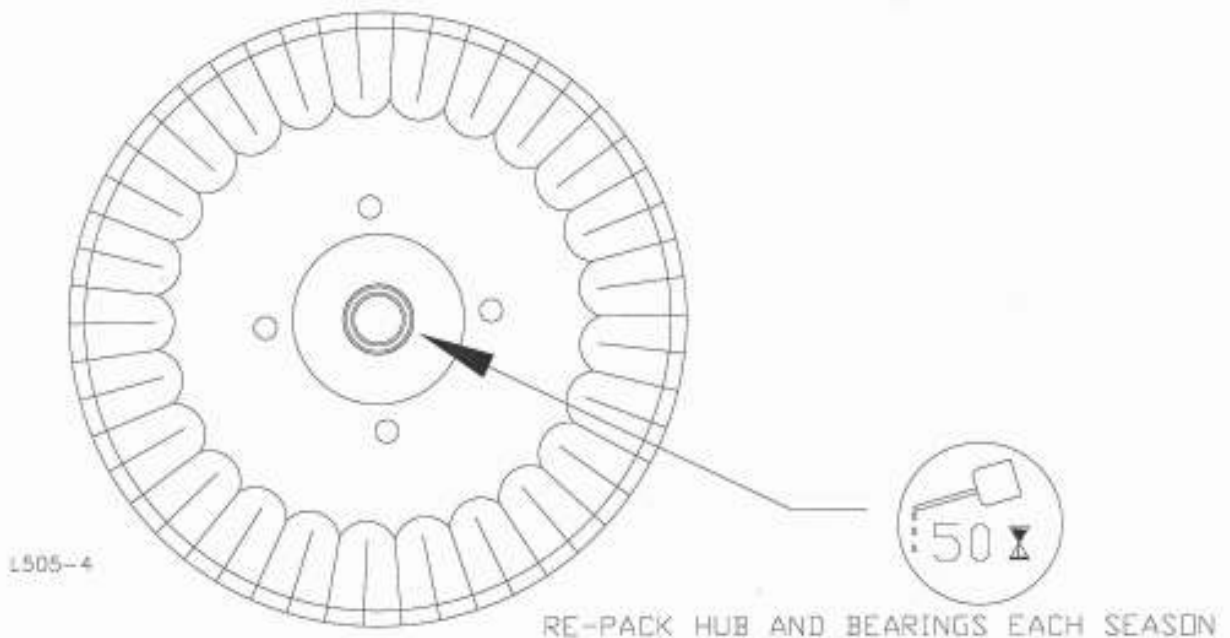
1. Assemble $3/8 \times 2-1/2$ " roll pin into hole closest to end of $1-1/2$ " diameter shank, leaving approximately equal amount protruding out each side. Note: offset shanks require that you perform step 2 first then step 1.
2. Insert lock collar into pivot casting and slide shank up through casting and lock collar. Slide shank up till roll pin contacts casting surface. Install and tighten $5/8 \times 1$ " setscrew in lock collar to 110 ft. lb. torque maximum.
3. Mount blade to hub using four $1/2 \times 1-1/2$ " carriage bolts, lock washers and nuts.
4. Assemble clamp components loosely to the tool bar as shown in parts view of appropriate clamp. Tighten four $1/2$ " nuts to secure the clamps.
5. Slide shank up through clamps and tighten $5/8 \times 1$ " setscrews.
6. Install $5/16 \times 2-1/2$ " cotter pins in all vertical $1-1/2$ " diameter shanks. This cotter pin prevents loss of coulters should the clamp setscrews work loose. Cotter pin can be installed between clamp castings or on top, above top casting depending on the shank.
7. Set lock collar to allow swivel in one or both directions as required. Tighten set screw to 110 ft. lb. torque maximum.
8. Set spring tension by adjusting $3/4$ " lock nut until $1/8$ " of threads are exposed above the nut. Tighten $3/4$ " locknut if greater spring pre-load is required.

OPERATION

1. Set/mount coulter blades to run perpendicular to the soil. Operation depth and blade wear can be affected if the coulter is mounted crooked or if the toolbar is not level side to side.
2. After a few hours of use, check all bolts for tightness and proper torque.
3. After a day of use (10-12 hours) check coulter hubs for loose bearings. There should be no endplay in the hub bearings allowing the blade to wobble. If necessary, remove hubcap and cotter pin and adjust the slotted nut to remove wobble, recommended torque of 15 ft. lbs. and re-insert cotter pin. If the wobble or looseness cannot be corrected, the bearings, cups and seals will need to be replaced.
DO NOT USE WORN OR DAMAGED PARTS.

MAINTENANCE

LUBRICATION: USE #2 MULTI-PURPOSE BEARING GREASE

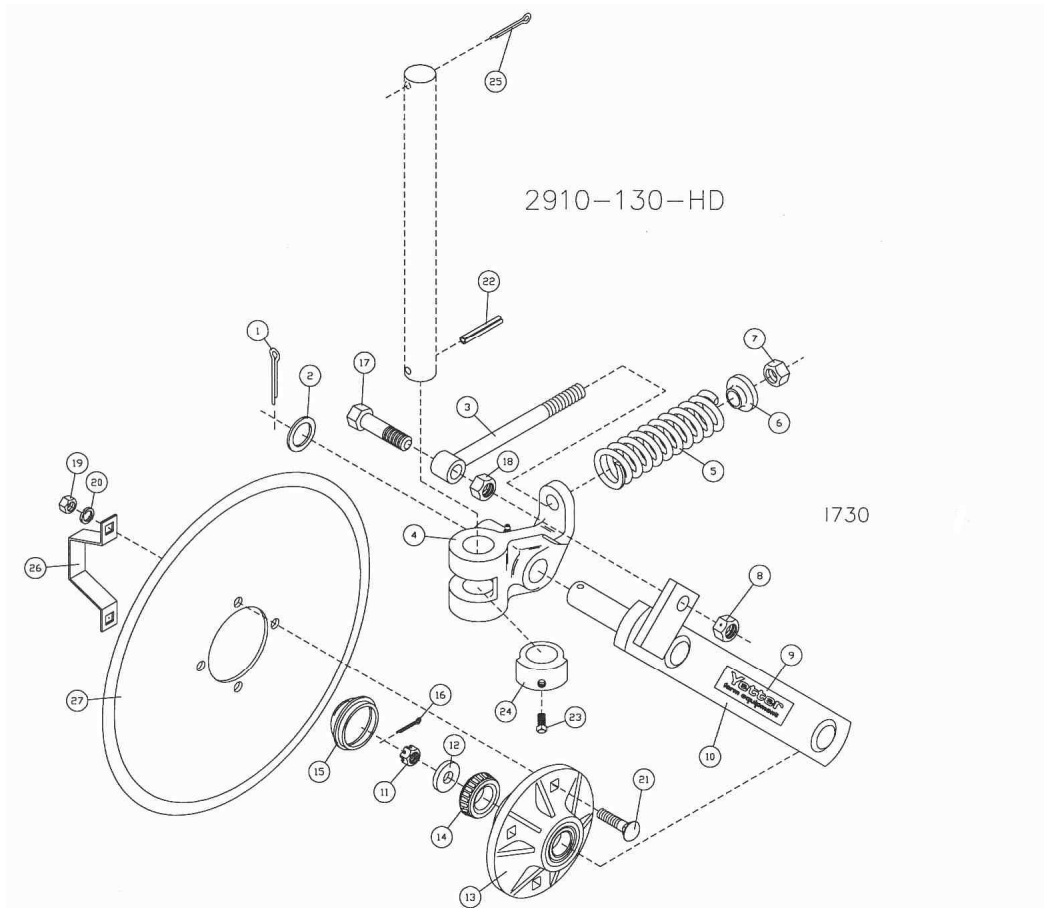


To ensure longevity and reliability of the U.N.T.[™] Coulter, the recommended lubrication schedule should be followed using multi-purpose grease at hourly intervals as indicated.

BEARING ADJUSTMENT:

1. Raise the toolbar until the blade is clear of the ground. Place a safety stand under the toolbar. Remove the hubcap, cotter pin, slotted nut and washer from the hub assembly. Remove the blade from the hub assembly.
2. Remove bearing cones and seals from hub.
3. Wash the old grease from the hub, bearing cups, spindle spacers, seals and bearing cones. Inspect the condition of the bearing cups, cones and seals. Replace if necessary.
4. Apply #2 multi-purpose lithium grease on each bearing. Make sure the space around each roller is filled. Lubricate the bearing cups.
5. Position the bearing in the cup and install the seal. Lubricate the seal lips and proceed with re-assembly of the removed parts including the blade. Blade bolt torque is 90 to 96 ft. lbs.
6. Tighten the slotted nut to 15 ft. lbs. or until a definite drag is felt when the blade is turned by hand. Tighten the nut one slot position to line up the cotter pin hole with a slot. Secure the nut with a new cotter pin, replace hubcap.

PARTS IDENTIFICATION

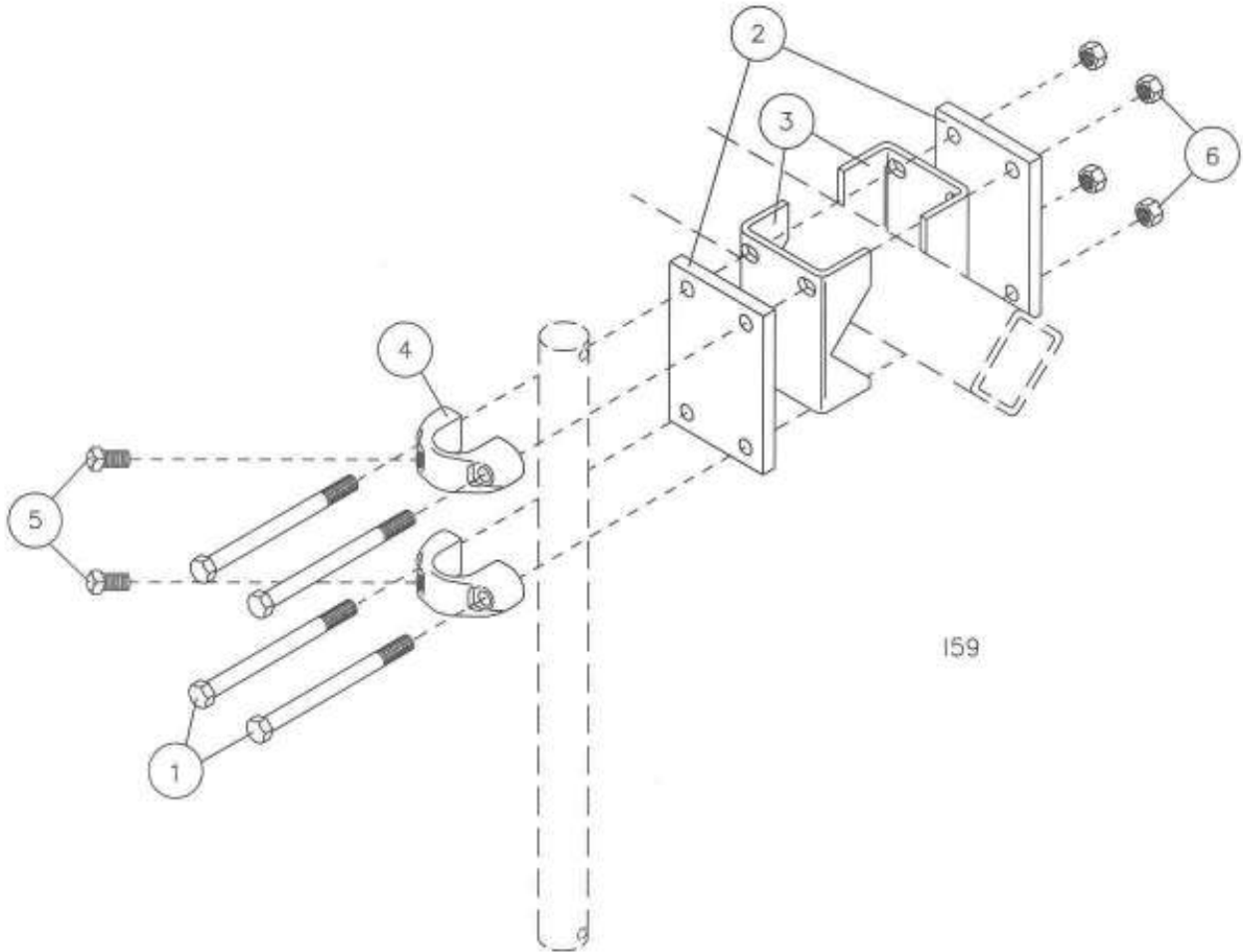


| DET | QTY | PART NO. | DESCRIPTION | DET | QTY | PART NO. | DESCRIPTION |
|-----|-----|----------|---------------------------------|-----|-----|----------|-------------------------------|
| 1 | 1 | 2531-125 | 1/4 X 1-3/4 COTTER PIN ZP | 14 | 1 | 2550-027 | CONE, LM67048 |
| 2 | 1 | 2526-561 | 1-17/64ID X1-7/8OD X14GA MB BL | 15 | 1 | 2570-375 | HUB CAP, WILTON #909902 |
| 3 | 1 | 2570-124 | 3/4" DIA EYEBOLT, 3/4 EYE, 12" | 16 | 1 | 2531-102 | 1/8 X 1-1/4 COTTER PIN BLACK |
| 4 | 1 | 2910-320 | PIVOT CASTING | 17 | 1 | 2502-410 | 3/4-16 X 3" HHCS GR 5 ZP |
| 5 | 1 | 2550-774 | SPRING, COMPRESSION | 18 | 1 | 2520-508 | 3/4-16 HEX NUT ZP |
| 6 | 1 | 2555-112 | 2910 SPRING BUSHING | 19 | 4 | 2520-352 | 1/2-13 HEX NUT ZP |
| 7 | 1 | 2520-516 | 3/4-10 NYLON INSERT LOCKNUT ZP | 20 | 4 | 2525-352 | 1/2 MED LOCKWASHER ZP |
| 8 | 1 | 2520-511 | 3/4-16 LOCK HEX NUT ZP | 21 | 4 | 2505-337 | 1/2-13 X 1 1/4 CAR BOLT GR5 |
| 9 | 1 | 2565-162 | YETTER DECAL, 1-1/2 X 4-1/2 | 22 | 1 | 2530-208 | 3/8 X 2-1/2 ROLL PIN ZP |
| 10 | 1 | 2910-207 | COULTER ARM W.A. | 23 | 1 | 2503-379 | 5/8-11 X 1 SQ. HCPSS GR.5 ZYD |
| 11 | 1 | 2520-469 | 5/8-18 SLOTTED HEX NUT, BLACK | 24 | 1 | 2910-301 | LOCKING COLLAR PLOW COULTER |
| 12 | 1 | 2526-449 | 5/8 FLATWASHER, 1/4 +- .010 THK | 25 | 1 | 2531-161 | 5/16 X 2-1/2 COTTER PIN ZYD |
| 13 | 1 | 2900-135 | HUB SUB-ASSEMBLY (TRIPLE LIP) | 26 | 1 | 2987-301 | HUB CAP RETAINER |
| | | 1 | 2550-027 | 1 | 1 | 2550-029 | CUP, LM67010 |
| | | 1 | 2550-066 | | | | |
| | | 1 | 2900-105 | | | | |
| | | 1 | 2533-110 | | | | |
| | | 1 | 2550-029 | | | | |

BLADE OPTIONS

| PART NO. | DESCRIPTION | PART NO. | DESCRIPTION |
|----------|--------------------------------|----------|--------------------------------|
| 2571-164 | 14-5/8" Wave Blade (8 Wave) | 2571-154 | 18" Wavy Blade (8 Wave) |
| 2571-167 | 14-4/8" 25 Multi-Wave Blade | 2571-155 | 18" 13 Wave Blade |
| 2571-154 | 16" Bubble Flute Blade | 2571-179 | 18" Multi-Wave Blade (25 Wave) |
| 2571-163 | 16" Ripple Blade | 2571-169 | 18" Smooth Blade |
| 2571-156 | 16" Wavy Blade (8 Wave) | 2571-076 | 20" Ripple Blade |
| 2571-164 | 16" 13 Wave Blade | 2571-178 | 20" Smooth Blade |
| 2571-172 | 16" Multi-Wave Blade (25 Wave) | 2571-198 | 20" Notched Blade |
| 2571-206 | 16" Smooth Blade | 2571-201 | 20" Notched Bubble Blade |
| 2571-158 | 17" Ripple Blade | 2571-203 | 20" Multi-Wave Blade (25 Wave) |
| 2571-165 | 17" Notched Smooth Blade | | |

PARTS IDENTIFICATION



159

2990-159 Clamp Kit, 3" Diamond Bar

| Key | Qty. | Part No. | Description |
|-----|------|----------|-----------------------------------|
| 1 | 4 | 2502-369 | 1/2-13 x 8" HHCS Gr. 5 ZP |
| 2 | 2 | 2990-314 | Clamp Plate, 4" Sq. or 3" Diamond |
| 3 | 2 | 2970-326 | Adaptor, 3" Sq. Diamond Bar |
| 4 | 2 | 2990-360 | Clamp Casting, Drilled |
| 5 | 2 | 2503-379 | 5/8-11 x 1" Sq. HCPSS Gr. 5 ZP |
| 6 | 4 | 2520-357 | 1/2-13 Lock Hex Nut ZP |

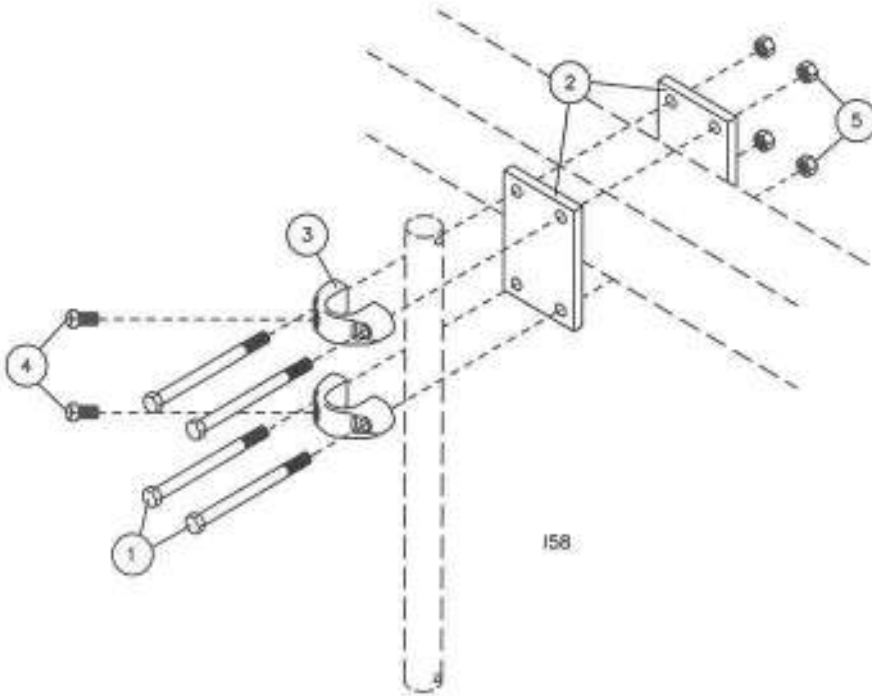
2990-160 Clamp Kit, 3-1/2" Diamond Bar

| Key | Qty. | Part No. | Description |
|-----|------|----------|---------------------------------|
| 1 | 4 | 2502-374 | 1/2-13 x 9" HHCS Gr. 5 ZP |
| 2 | 2 | 2990-316 | Clamp Plate, 3-1/2" Diamond Bar |
| 3 | 2 | 2970-327 | Adaptor, 3-1/2" Sq. Diamond Bar |
| 4 | 2 | 2990-360 | Clamp Casting, Drilled |
| 5 | 2 | 2503-379 | 5/8-11 x 1" Sq. HCPSS Gr. 5 ZP |
| 6 | 4 | 2520-357 | 1/2-13 Lock Hex Nut ZP |

2990-166 Clamp Kit, 2-1/4, 2-1/2 Diamond Bar

| Key | Qty. | Part No. | Description |
|-----|------|----------|---------------------------------------|
| 1 | 4 | 2502-371 | 1/2-13 x 7" HHCS Gr. 5 ZP |
| 2 | 2 | 2990-348 | Clamp Plate, 2-1/4, 2-1/2 Diamond Bar |
| 3 | 2 | 2990-349 | Adaptor, 2-1/4, 2-1/2 Diamond Bar |
| 4 | 2 | 2990-360 | Clamp Casting, Drilled |
| 5 | 2 | 2503-379 | 5/8-11 x 1" Sq. HCPSS Gr. 5 ZP |
| 6 | 4 | 2520-357 | 1/2-13 Lock Hex Nut ZP |

PARTS IDENTIFICATION



2990-154 Clamp Kit, 2-1/2" Sq. Bar

| Key | Qty. | Part No. | Description |
|-----|------|----------|-------------------------------|
| 1 | 4 | 2502-368 | 1/2-13 x 5-1/2" HHCS GR. 5 ZP |
| 2 | 2 | 2990-313 | Clamp Plate, 2-1/2 Square Bar |
| 3 | 2 | 2990-360 | Clamp Casting, Drilled |
| 4 | 2 | 2503-379 | 5/8-11 x 1 Sq. HCPSS Gr. 5 ZP |
| 5 | 4 | 2520-357 | 1/2-13 Hex Lock Nut ZP |

2990-155 Clamp Kit, 2 x 6 Bar

| Key | Qty. | Part No. | Description |
|-----|------|----------|-------------------------------|
| 1 | 4 | 2502-362 | 1/2-13 X 5" HHCS GR. 5 ZP |
| 2 | 2 | 2975-363 | Clamp Plate, Universal |
| 3 | 2 | 2990-360 | Clamp Casting, Drilled |
| 4 | 2 | 2503-379 | 5/8-11 x 1 Sq. HCPSS Gr. 5 ZP |
| 5 | 4 | 2520-357 | 1/2-13 Hex Lock Nut ZP |

2990-156 Clamp Kit, 4 x 4 Bar

| Key | Qty. | Part No. | Description |
|-----|------|----------|--------------------------------------|
| 1 | 4 | 2502-371 | 1/2-13 x 7" HHCS GR. 5 ZP |
| 2 | 2 | 2990-314 | Clamp Plate, 4" Sq. & 3" Diamond Bar |
| 3 | 2 | 2990-360 | Clamp Casting, Drilled |
| 4 | 2 | 2503-379 | 5/8-11 x 1 Sq. HCPSS Gr. 5 ZP |
| 5 | 4 | 2520-357 | 1/2-13 Hex Lock Nut ZP |

2990-157 Clamp Kit, 5 x 7 Bar

| Key | Qty. | Part No. | Description |
|-----|------|----------|---------------------------------|
| 1 | 4 | 2502-369 | 1/2-13 X 8" HHCS GR. 5 ZP |
| 2 | 2 | 2990-315 | Clamp Plate, 5 x 7 or 7 x 7 Bar |
| 3 | 2 | 2990-360 | Clamp Casting, Drilled |
| 4 | 2 | 2503-379 | 5/8-11 x 1 Sq. HCPSS Gr. 5 ZP |
| 5 | 4 | 2520-357 | 1/2-13 Hex Lock Nut ZP |

2990-158 Clamp Kit, 7 x 7 Bar

| Key | Qty. | Part No. | Description |
|-----|------|----------|---------------------------------|
| 1 | 4 | 2502-376 | 1/2-13 x 10" HHCS GR. 5 ZP |
| 2 | 2 | 2990-315 | Clamp Plate, 5 x 7 or 7 x 7 Bar |
| 3 | 2 | 2990-360 | Clamp Casting, Drilled |
| 4 | 2 | 2503-379 | 5/8-11 x 1 Sq. HCPSS Gr. 5 ZP |
| 5 | 4 | 2520-357 | 1/2-13 Hex Lock Nut ZP |

2990-161 Clamp Kit, 3 x 7 Bar

| Key | Qty. | Part No. | Description |
|-----|------|----------|---------------------------------|
| 1 | 4 | 2502-373 | 1/2-13 X 6" HHCS GR. 5 ZP |
| 2 | 2 | 2990-315 | Clamp Plate, 5 x 7 or 7 x 7 Bar |
| 3 | 2 | 2990-360 | Clamp Casting, Drilled |
| 4 | 2 | 2503-379 | 5/8-11 x 1 Sq. HCPSS Gr. 5 ZP |
| 5 | 4 | 2520-357 | 1/2-13 Hex Lock Nut ZP |

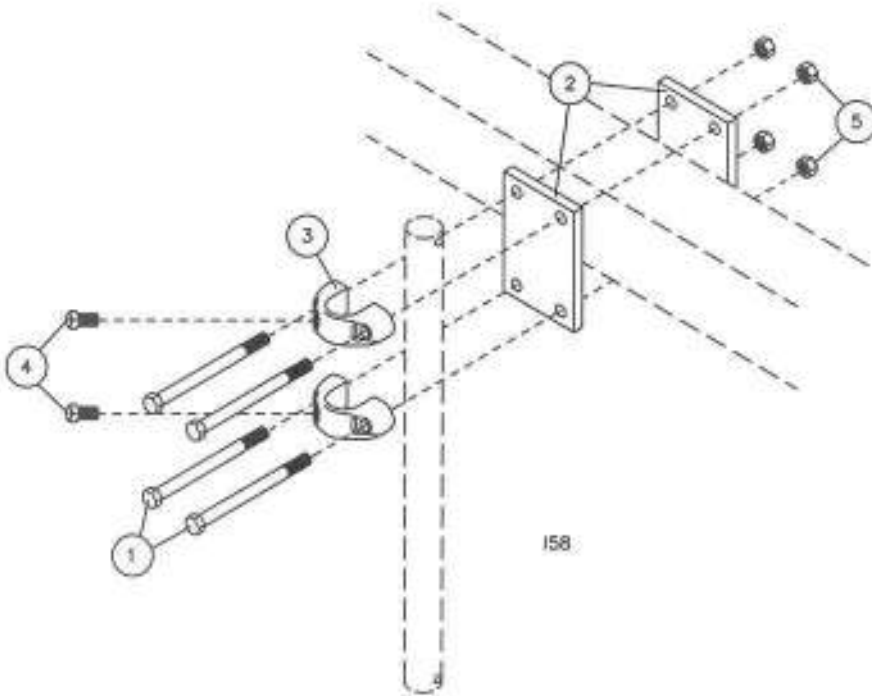
2990-163 Clamp Kit, 3 x 3 Bar

| Key | Qty. | Part No. | Description |
|-----|------|----------|-------------------------------|
| 1 | 4 | 2502-373 | 1/2-13 x 6" HHCS GR. 5 ZP |
| 2 | 2 | 2990-314 | Clamp Plate, 3" Square Bar |
| 3 | 2 | 2990-360 | Clamp Casting, Drilled |
| 4 | 2 | 2503-379 | 5/8-11 x 1 Sq. HCPSS Gr. 5 ZP |
| 5 | 4 | 2520-357 | 1/2-13 Hex Lock Nut ZP |

2990-171 Clamp Kit, 3 x 4 Bar

| Key | Qty. | Part No. | Description |
|-----|------|----------|-------------------------------|
| 1 | 4 | 2502-373 | 1/2-13 X 6" HHCS GR. 5 ZP |
| 2 | 2 | 2990-314 | Clamp Plate, 4" Sq. & 3" Dmd |
| 3 | 2 | 2990-360 | Clamp Casting, Drilled |
| 4 | 2 | 2503-379 | 5/8-11 x 1 Sq. HCPSS Gr. 5 ZP |
| 5 | 4 | 2520-357 | 1/2-13 Hex Lock Nut ZP |

PARTS IDENTIFICATION



2975-151 Clamp Kit, 3 x 6 Bar

| Key | Qty. | Part No. | Description |
|-----|------|----------|-------------------------------|
| 1 | 4 | 2502-373 | 1/2-13 x 6" HHCS GR. 5 ZP |
| 2 | 2 | 2975-363 | Clamp Plate, Universal |
| 3 | 2 | 2990-360 | Clamp Casting, Drilled |
| 4 | 2 | 2503-379 | 5/8-11 x 1 Sq. HCPSS Gr. 5 ZP |
| 5 | 4 | 2520-357 | 1/2-13 Hex Lock Nut ZP |

2990-172 Clamp Kit, 4 x 6 Bar

| Key | Qty. | Part No. | Description |
|-----|------|----------|-------------------------------|
| 1 | 4 | 2502-371 | 1/2-13 X 7" HHCS GR. 5 Zp |
| 2 | 2 | 2975-363 | Clamp Plate, Universal |
| 3 | 2 | 2990-360 | Clamp Casting, Drilled |
| 4 | 2 | 2503-379 | 5/8-11 x 1 Sq. HCPSS Gr. 5 ZP |
| 5 | 4 | 2520-357 | 1/2-13 Hex Lock Nut ZP |

2990-173 Clamp Kit, 6 x 4 Bar

| Key | Qty. | Part No. | Description |
|-----|------|----------|--------------------------------------|
| 1 | 4 | 2502-374 | 1/2-13 x 9" HHCS GR. 5 ZP |
| 2 | 2 | 2990-314 | Clamp Plate, 4" Sq. & 3" Diamond Bar |
| 3 | 2 | 2990-360 | Clamp Casting, Drilled |
| 4 | 2 | 2503-379 | 5/8-11 x 1 Sq. HCPSS Gr. 5 ZP |
| 5 | 4 | 2520-357 | 1/2-13 Hex Lock Nut ZP |

2990-174 Clamp Kit, 7 x 5 Bar

| Key | Qty. | Part No. | Description |
|-----|------|----------|-------------------------------|
| 1 | 4 | 2502-376 | 1/2-13 X 10" HHCS GR. 5 ZP |
| 2 | 2 | 2975-367 | Clamp Plate, 5 Sq. Bar |
| 3 | 2 | 2990-360 | Clamp Casting, Drilled |
| 4 | 2 | 2503-379 | 5/8-11 x 1 Sq. HCPSS Gr. 5 ZP |
| 5 | 4 | 2520-357 | 1/2-13 Hex Lock Nut ZP |

2990-175 Clamp Kit, 7 x 4 Bar

| Key | Qty. | Part No. | Description |
|-----|------|----------|------------------------------------|
| 1 | 4 | 2502-376 | 1/2-13 x 10" HHCS GR. 5 ZP |
| 2 | 2 | 2990-314 | Clamp Plate, 4" Sq. 3" Diamond Bar |
| 3 | 2 | 2990-360 | Clamp Casting, Drilled |
| 4 | 2 | 2503-379 | 5/8-11 x 1 Sq. HCPSS Gr. 5 ZP |
| 5 | 4 | 2520-357 | 1/2-13 Hex Lock Nut ZP |

2990-182 Clamp Kit, 4 x 7 Bar

| Key | Qty. | Part No. | Description |
|-----|------|----------|---------------------------------|
| 1 | 4 | 2502-371 | 1/2-13 X 7" HHCS GR. 5 ZP |
| 2 | 2 | 2990-315 | Clamp Plate, 5 x 7 or 7 x 7 Bar |
| 3 | 2 | 2990-360 | Clamp Casting, Drilled |
| 4 | 2 | 2503-379 | 5/8-11 x 1 Sq. HCPSS Gr. 5 ZP |
| 5 | 4 | 2520-357 | 1/2-13 Hex Lock Nut ZP |

6300-105 Clamp Kit, 5 x 5 Bar

| Key | Qty. | Part No. | Description |
|-----|------|----------|-------------------------------|
| 1 | 4 | 2502-369 | 1/2-13 x 8" HHCS GR. 5 ZP |
| 2 | 2 | 2975-367 | Clamp Plate, 5" Square Bar |
| 3 | 2 | 2990-360 | Clamp Casting, Drilled |
| 4 | 2 | 2503-379 | 5/8-11 x 1 Sq. HCPSS Gr. 5 ZP |
| 5 | 4 | 2520-357 | 1/2-13 Hex Lock Nut ZP |

Our name Is getting known

Just a few years ago, Yetter products were sold primarily to the Midwest only. Then we embarked on a program of expansion and moved into the East, the South, the West and now north into Canada. We're even getting orders from as far away as Australia and Africa.

So, when you buy Yetter products . . .you're buying a name that's recognized. A name that's known and respected. A name that's become a part of American agriculture and has become synonymous with quality and satisfaction in the field of conservation tillage.

Thank you.

YETTER MANUFACTURING CO.

Colchester, IL 62326-0358 • 309/776-4111

Toll Free 800/447-5777

Fax 309/776-3222

Website: WWW.YETTERCO.COM

E-MAIL: INFO@YETTERCO.COM