



SEED PARTNER

SystemsOne
A YETTER COMPANY

Colchester, IL 62326-0358 • 309/776-4111

Toll Free 800/447-5777

309/776-3222 (Fax)

Website: WWW.YETTERCO.COM

Email: INFO@YETTERCO.COM

FOREWORD

You've just joined an exclusive but rapidly growing club.

For our part, we want to welcome you to the group and thank you for buying a Yetter product.

We hope your new Seed Partner will help you achieve both increased productivity and increased efficiency so that you may generate more profit.

This operator's manual has been designed into four major sections: Foreword, Safety Precautions, Installation Instructions, and Parts Breakdown.

This **SAFETY ALERT SYMBOL** indicates important safety messages in the manual. When you see this symbol, be alert to the possibility of **PERSONAL INJURY** and carefully read the message that follows.

The word **NOTE** is used to convey information that is out of context with the manual text. It contains special information such as specifications, techniques, reference information of a supplementary nature.

The word **IMPORTANT** is used in the text when immediate damage will occur to the machine due to improper technique or operation. Important will apply to the same

information as specified by note only of an immediate and urgent nature.

It is the responsibility of the user to read the operator's manual and comply with the safe and correct operating procedure and to lubricate and maintain the product according to the maintenance schedule in the operator's manual.

The user is responsible for inspecting his machine and for having parts repaired or replaced when continued use of the product would cause damage or excessive wear to the other parts.

It is the user's responsibility to deliver his machine to the Yetter dealer who sold him the product for service or replacement of defective parts, which are covered by the warranty policy.

If you are unable to understand or follow the instructions provided in this publication, consult your local Yetter dealer or contact:

SYSTEMS ONE

(309) 776-4111

(309) 776-3222 (Fax)

WEBSITE: WWW.YETTERCO.COM

EMAIL: INFO@YETTERCO.COM

WARRANTY POLICY

Yetter Manufacturing warrants all products manufactured and sold by it against defect in material. This warranty being expressly limited to replacement at the factory of such parts or products as shall appear to be defective after inspection. This warranty does not obligate the Company to bear cost of labor in replacement of parts. It is the policy of the company to make improvements without incurring obligations to add them to any unit already sold. No warranty is made or authorized to be made other than herein set forth. This warranty is in effect for one year after purchase.

Dealer _____

Yetter Manufacturing warrants its own products only and cannot be responsible for damage to equipment on which mounted.

TABLE OF CONTENTS

FOREWORD.....	2
WARRANTY POLICY.....	2
SAFETY PRECAUTIONS.....	4
SEED PARTNER SET UP & OPERATION.....	5
SEED PARTNER SET UP & ASSEMBLY.....	6
ASSEMBLY.....	7
POWER UNIT SET UP.....	8
MAINTENANCE.....	9
PARTS IDENTIFICATION.....	10-18
TROUBLESHOOTING.....	19

SAFETY PRECAUTIONS

You can make your farm a safer place to live and work if you observe the safety precautions given. Study these precautions carefully and insist those working with you and for you follow the precautions.

Finally, remember this an accident is usually caused by someone's carelessness, neglect or oversight.

A brief description of signal words that may be used in this manual:

CAUTION: Used as a general reminder of good safety practices or to direct attention to unsafe practices.

WARNING: Denotes a specific potential hazard.

DANGER: Denotes the most serious specific potential hazard.

CAUTION

Consult your implement and tractor operator's manual for correct and safe operating practices. Be aware of towed implement width and allow safe clearance.

CAUTION: SAFETY SIGNS

Safety decals are placed on the implement to alert the operator and others to the risk of personal injury or unsafe operation during normal operations and servicing.

1. The safety decals must be kept clean and in good condition to ensure that they are legible.
2. Safety decals must be replaced if they are missing or illegible.
3. When components are replaced during repair or servicing, check that the new components include the necessary safety signs.
4. Replacement safety decals may be obtained from your local dealer.

WARNING

Read these instructions carefully to acquaint yourself with the Seed Partner. Working with unfamiliar equipment can lead to accidents.

Safety shields must always be in place during operation.

Never park the Seed Partner on a steep incline or leave the equipment running unattended.

Never clean, lubricate or adjust a machine that is in motion. Always remove spark plug wire before performing service.

Always replace safety shields after servicing.

If machine must be serviced in the raised position, jack or block it up to prevent it from accidentally falling and injuring someone.

Be sure the park brake is set before operating.

Do not allow children to operate this equipment.

Do not allow riders on the Seed Partner, tractor or pickup.

Use speeds and caution dictated by the terrain being traversed. Do not operate on any slope steep enough to cause tipping or loss of control.

Be sure all personnel are clear of the immediate area before operating.

Read and understand the operator's manual and require all other persons who will operate the equipment to do the same.

If operating on public roadways, where legal, be certain all lighting is operating properly and observe all traffic laws.

Attach a slow moving vehicle emblem to the rear of the trailing implement.

Beware of increased stopping distances and control effort when operating with implements attached.

Be familiar with all controls and be prepared to stop engine and equipment quickly in an emergency.

If seed or seed treatment is dusty or dirty, wear a full-face respirator.

FAILURE TO HEED MAY RESULT IN PERSONAL INJURY OR DEATH.

SEED PARTNER SET UP & OPERATION

The Seed Partner consists of a Seed Cart and Seed Jet II. Your Seed Partner is shipped as an assembled unit with one pallet box. Please check that the following items are received in the container:

Hose Assembly Parts Bag
Seed Jet II Hose Assembly
Seed Partner Parts Bag

NOTE: Gasoline, oil and a 12-Volt battery (Group 58 or 26-70) will be required before the unit can be operated.

1. The wheels and tires must be moved from the shipping position to the field position. Remove the two rear wheel, hub and tire assemblies from inside the frame install them in the same spindle tubes outside of the frame as shown in the illustration.

WARNING: Do not pull your Seed Partner in the field or on the road with the tires in the shipping position! If you pull it with the tires in the shipping position at any speed or over uneven surfaces the cart may tip over resulting in serious personal injury or death.

2. Check the tension in the tank strap and tighten if loose.
3. Check for loose bolts or damaged parts and tighten or repair as required.
4. Grease the front wheel pivot tube.
5. Check tire air pressure and inflate to 32psi if required.
6. Be sure that the tongue pin snaps into one of the holes in the inner tongue and is secure, before towing.
7. After filling your Seed Partner with seed, remove both ladders, turn them upside down and place in the field storage position. Secure the ladders in the field storage position with the klik pins.

WARNING: Never ride on the cart or allow anyone else to ride on it. The ladders and walkboard are to assist in filling the cart when it is not moving. If you ride on the cart or allow anyone to ride on it while it is moving, you or they may fall off resulting in serious personal injury or death.

8. The roll of stainless steel flex hose is to be connected to the airlock output.

NOTE: DO NOT START ENGINE OR USE BLOWER BEFORE FILLING WITH PROPER LUBRICANTS.

9. Adjust slide gate opening on airlock to maximum opening without overloading the engine and blower. It is advisable to close slide door and empty hopper before transporting the unit. Seed left in the airlock and exposed to moisture could swell and damage the airlock assembly.
10. Always shut off airlock and allow hose to clear of grain before throttling down the engine and shutting off the whole system.

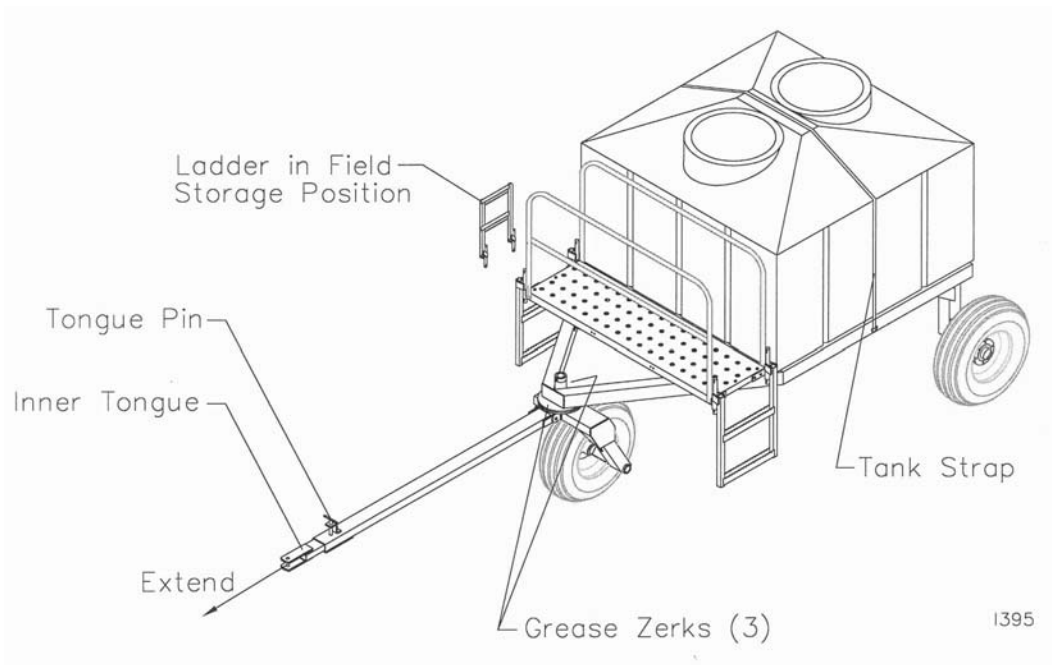
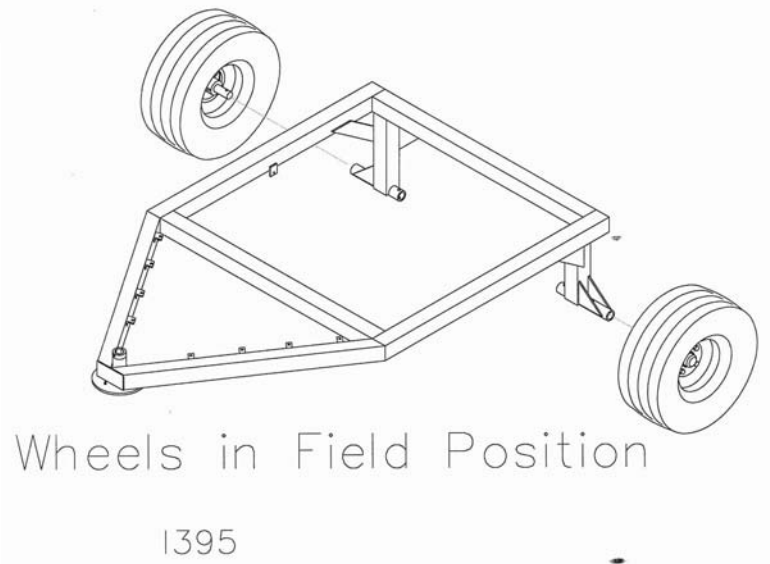
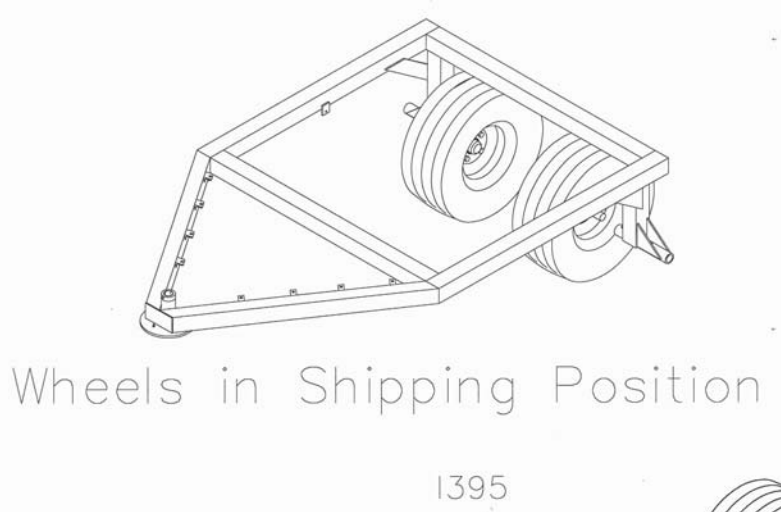
NOTE: There is a time delay from turning off the switch to when the material quits flowing from the cyclone, some practice may be necessary for precise filling of seed boxes!

CAUTION: Ground clearance of the Seed Partner is reduced when airlock unit is attached, negotiate obstacles and uneven terrain carefully.

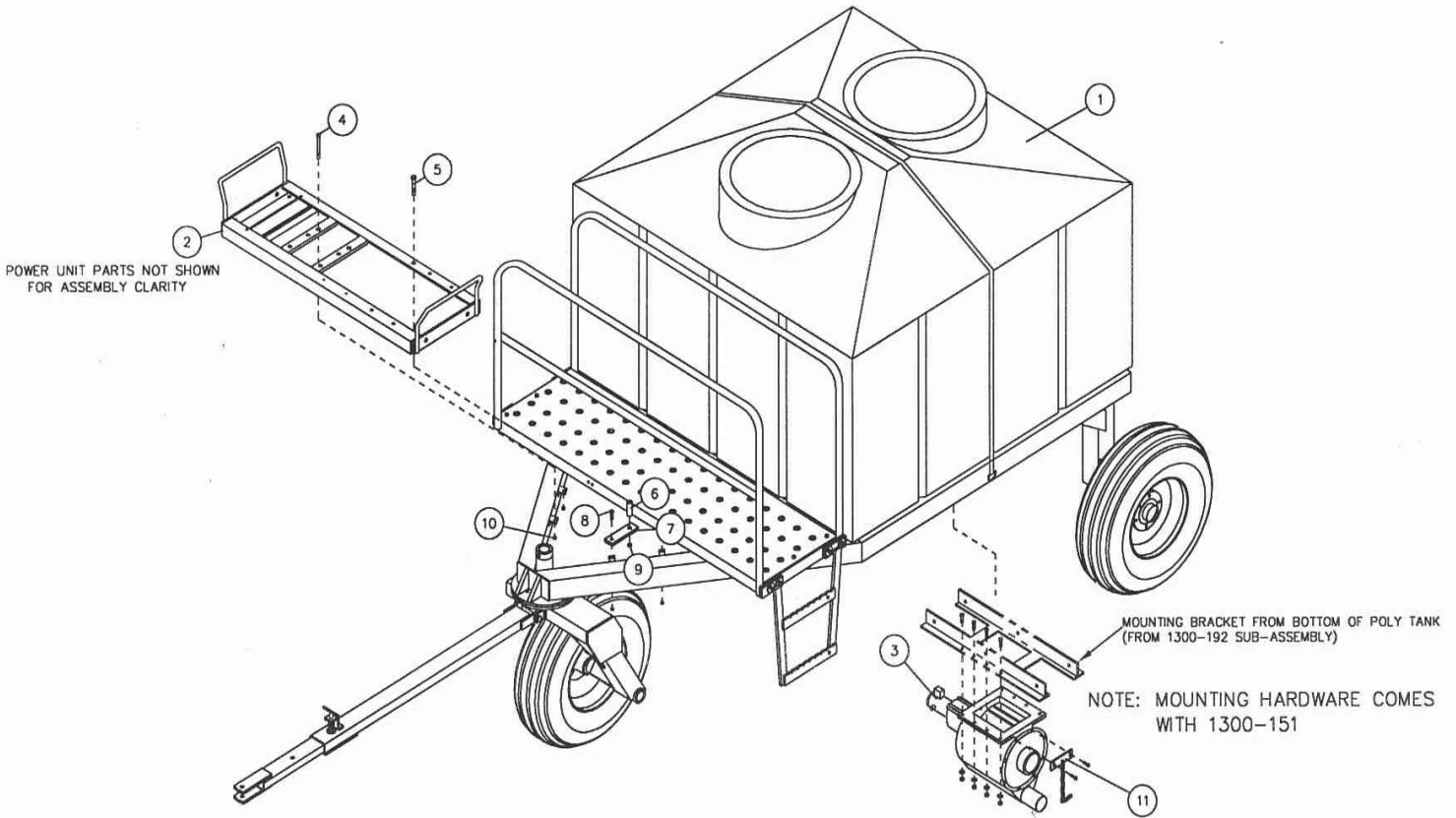
WARNING: Do not disconnect the air hoses while the blower is running. If you do seed may shoot out of the hose or the hose may whip resulting in possible personal injury and loss of seed.

DANGER: Do not pull the Seed Partner on steep slopes or above 20 mph. If you do the Seed Partner may tip over resulting in damage to the cart and possible serious personal injury or death.

SEED PARTNER SET UP & ASSEMBLY



ASSEMBLY



1578

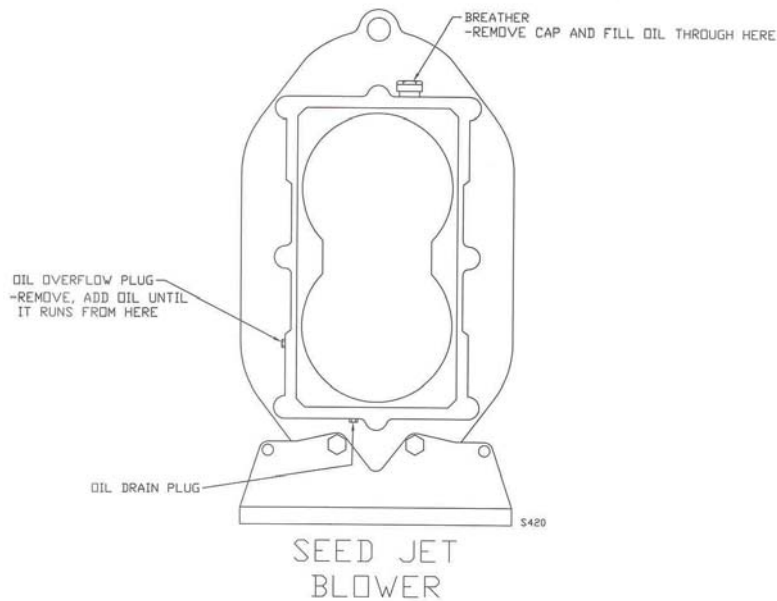
DET	QTY	PART NO.	DESCRIPTION
1	1	1300-192	SEED PARTNER SUB-ASSEMBLY
2	1	1300-183	POWER UNIT ASSEMBLY (10/01)
3	1	1300-151	AIRLOCK & MOTOR ASSEMBLY
4	1	2502-246	3/8-16 X 3 HHCS GR5 ZP
5	1	2502-296	1/2-13 X 2-1/2 HHCS GR 5 ZP
6	1	2967-425	INSIDE BUSHING ZYD
7	1	1300-547	1-1/2 X 4 29/32 FRAME CLAMP
8	1	2502-237	3/8-16 X 1 HHCS GR 5 ZP
9	1	2520-357	1/2-13 LOCK HEX NUT ZYD
10	2	2520-255	3/8-16 HEX LOCK NUT ZYD
11	1	1300-219	SEED GATE STOP W.A.

GENERAL INFORMATION

POWER UNIT SET UP

NOTE: Gasoline, oil, and a 12-Volt Battery (Group 58 or 26-70) will be required before the unit can be operated.

DO NOT START ENGINE OR USE BLOWER BEFORE FILLING WITH PROPER LUBRICANTS. ENGINE HAS AN OIL LEVEL SENSOR; OIL LEVEL MUST BE FULL ON DIPSTICK. DO NOT OVERFILL!!



WARNING: Read and follow all safety procedures described in instructions provided by engine and blower manufacturers before attempting to operate this unit.

1. Fill crankcase of engine with oil as specified in the instructions supplied by the engine manufacturer. (High quality SAE 30 weight, SE, SF or SG service grade)
2. Fill gasoline tank with clean, fresh lead free gasoline (85 octane), refer to engine instruction book for specific details.

NOTE: Briggs & Stratton does not recommend the use of gasoline which contains alcohol such as gasohol. If gasoline with alcohol is used, it must not contain more than 10% Ethanol and **MUST** be removed from the engine during storage. **DO NOT** use gasoline containing methanol.

3. Add oil to blower gear case as explained in blower operating manual. **DO NOT OVERFILL.**
4. Install and clamp securely a 12-Volt battery, Group 58 or 26-70.
5. Check that all electrical connections are tight.
6. Check tension of drive belt.
7. Ensure that all safety shields are in place.

NOTE: For questions concerning warranty on the engine or blower, contact the corresponding manufacturer or the local service/retail outlet.

MAINTENANCE



WARNING: Never clean, lubricate or adjust a machine that is in motion. Failure to heed may result in serious personal injury or death.

1. Inspect daily and clean safety decals. Replace if torn or no longer functional.
2. Inspect daily the air cleaner element and clean or replace as required.
3. Inspect daily and retighten, as required, all bolts on the power unit and assemblies.
4. Inspect daily and repair, as required, all air hoses and fittings.
5. See blower manual for proper lubrication.
6. Inspect, refill and replace the blower oil per the instructions in the blower manual.
7. Inspect the airlock assembly, it must turn freely.
8. Do not allow the airlock assembly and the blower to be exposed to water.
9. Lubricate the airlock with “fogging oil” before and after the in-use season.
10. Clean and lubricate the machine before putting into storage. Do not leave seed or seed treatments/inoculants in or near the airlock.



STORAGE

1. Inspect, refill and replace the blower oil per the instructions in the blower manual. Use a high quality hydraulic oil.
2. Inspect the airlock assembly, it must turn freely.
3. Do not allow the airlock assembly and blower to be exposed to water, moisture or condensation. Store in a clean dry area.
NOTE: If airlock and/or blower are exposed to water they will rust and may cause NON-REPAIRABLE internal damage.
4. Lubricate the airlock and blower with “fogging oil” before and after the in-use season.
5. Clean and lubricate the machine before putting into storage. Do not leave seed or seed treatments/inoculants in or near the airlock.
IMPORTANT: Do Not Use a pipe wrench to free a stuck airlock.
6. Remove hoses from all fittings, cap or cover the hoses, airlock and blower fittings to repel rodents and moisture and to seal in lubricants.
7. Gasoline engines stored over 30 days need to be protected or drained of fuel to prevent gum from forming in fuel system or essential carburetor parts. For gasoline engine protection, we recommend use of Briggs & Stratton fuel stabilizer available from an authorized Briggs & Stratton service dealer. Mix stabilizer with fuel tank or storage container. Run engine for a short time to circulate stabilizer through carburetor. Engine and fuel can be stored up to 24 months.

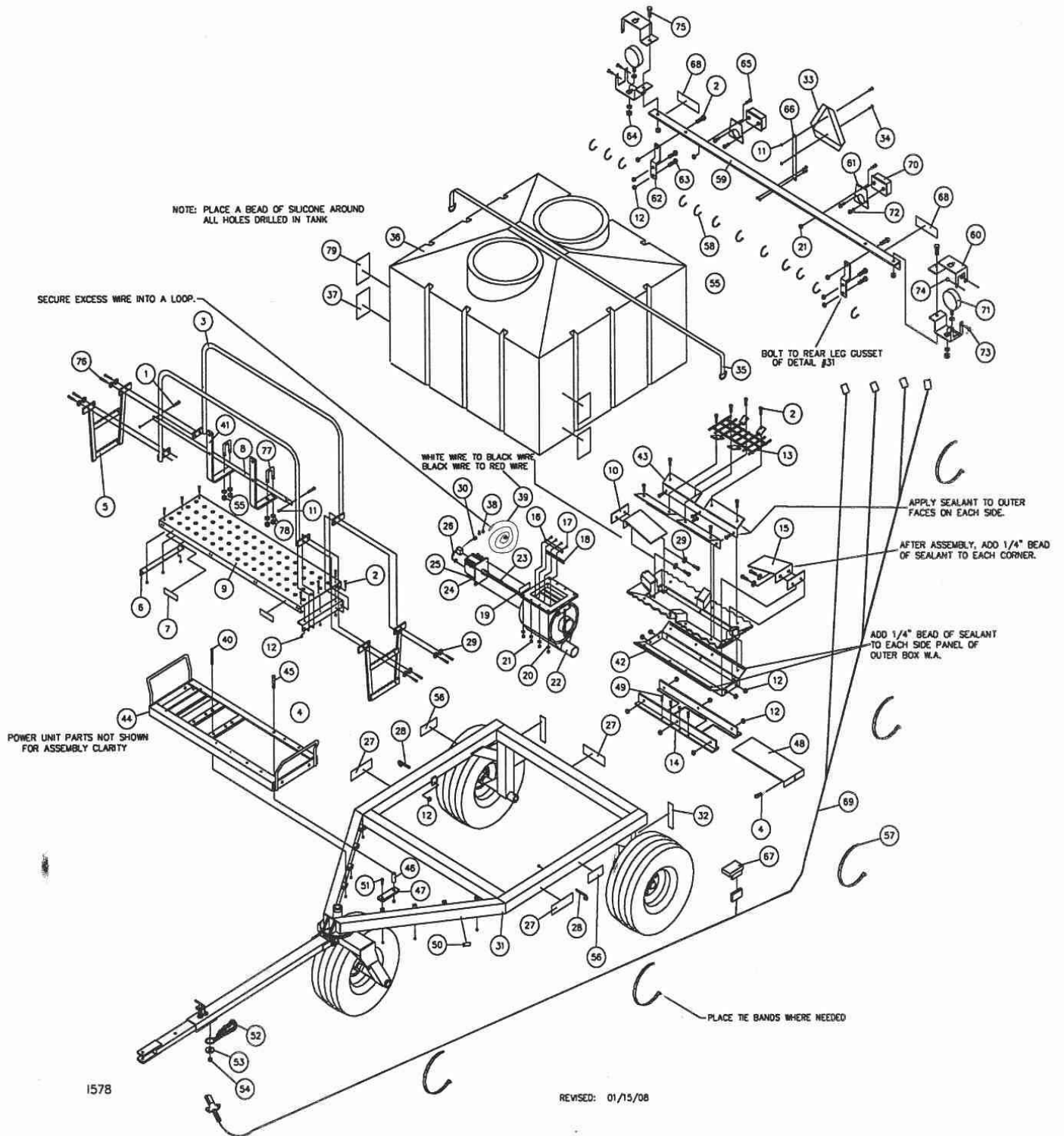
NOTE: If stabilizer is not used or if engine is operating on gasoline containing alcohol, e.g. gasohol, remove all fuel from tank and run engine until it stops from lack of fuel.

STORAGE PROCEDURES FOR GAS/LPG/NG ENGINES

1. Change oil.
2. Remove spark plug and pour about 15 ml (1/2oz.) of engine oil into cylinder. Replace spark plug and crank slowly to distribute oil.
3. Clean chaff and debris from cylinder and cylinder head fins, under finger guard and behind muffler.
4. Store in a clean and dry area, but NOT near a stove, furnace or water heater which uses a pilot light or any device that create a spark.

PARTS IDENTIFICATION

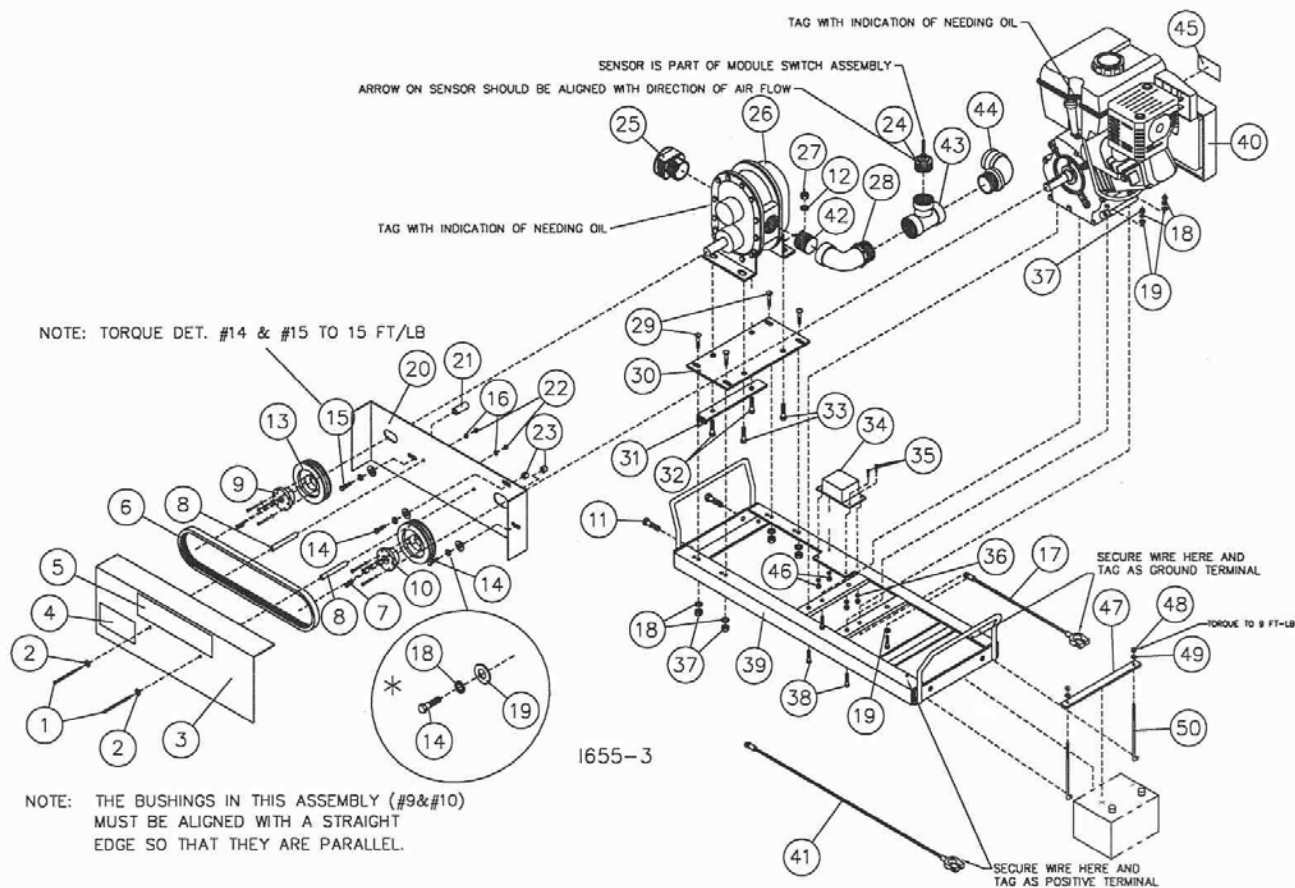
1300-129 SEED PARTNER MAIN ASSEMBLY



PARTS IDENTIFICATION

1300-129 SEED PARTNER MAIN ASSEMBLY			
Key	Qty	Part No.	Description
1	2	2502-102	1/4-20 X 2 HHCS GR 5 ZP
2	30	2502-244	3/8-16 X 1-1/4 HHCS GR 5 ZP
3	2	7100-208	HANDRAIL W.A.
4	1	2570-448	1/8 STANDARD HAIRPIN COTTER ZP
5	2	7100-230	LADDER W.A. (7/99)
6	2	7100-337	ANGLE, LADDER
7	2	2565-808	AMBER REFLECTOR, 1.97 X 6.3"
8	1	7100-340	CROSS TUBE, RAIL
9	1	7100-358	FOOTBOARD
10	2	7100-345	INNER SIDE PANEL
11	6	2520-152	1/4-20 LOCK HEX NUT ZP
12	50	2520-255	3/8-16 LOCK HEX NUT ZP
13	1	1300-222	GRATE MOUNTING W.A.
14	1	1300-221	AIR LOCK MOUNTING W.A.
15	2	1300-428	CLEAN OUT PLATE
16	1	1300-642	WIPER BACKING PLATE
17	4	2511-154	#10-24 X 1/2 PAN HD MACH SCR ZP
18	1	1300-641	AIRLOCK WIPER
19	1	2565-440	AIRLOCK ROTATION DECAL
20	8	2526-201	5/16 STANDARD FLATWASHER ZP
21	10	2520-205	5/16-18 HEX LOCK NUT ZP
22	1	1300-119	AIR LOCK ASSEMBLY
23	1	2590-033	3/16 X 3/16 X 1 KEY STOCK
24	4	2525-151	1/4 MED LOCKWASHER ZP
25	4	2510-107	1/4-20 X 1 HEX SOCKET SCREW
26	1	2514-345	12V DC MOTOR, 1/5 HP, PM, 34:1
27	3	2565-439	SEED JET II DECAL
28	2	2570-745	3/8-16 J-BOLT ZP
29	12	2526-251	3/8-16 STANDARD FLATWASHER ZP
30	1	1300-409	3/8" ROMEX CONNECTOR
31	1	7100-101	FRAME SUB-ASSEMBLY
32	2	2565-459	RED REFLECTOR, 2 X 9
33	1	2570-472	SMV EMBLEM ALUM BACKED
34	4	2502-105	1/4-20 X 3/4 HHCS GR 5 ZP
35	1	7100-388	1 3/4 X 157" STRAP W/D-RINGS
36	1	2515-701	POLY TANK W/VENTED LIDS
37	2	2565-461	WARNING DO NOT RIDE DECAL
38	2	1300-408	GB-3 ORANGE WIRE NUT
39	1	1300-419	MOTOR POWER CABLE, 23', 14-2, CON
40	1	2502-246	3/8-16 X 3 HHCS GR5 ZP
41	2	1300-478	HOSE HOOK
42	1	1300-220	OUTER BOX W.A.
43	2	7100-346	INNER PANEL
44	1	1300-183	POWER UNIT ASSEMBLY (01/03)
45	1	2502-296	1/2-13 X 2-1/2 HHCS GR 5 ZP
46	1	2967-425	INSIDE BUSHING ZYD
47	1	1300-547	1-1/2 X 4 29/32 FRAME CLAMP
48	1	1300-425	SHUTOFF GATE
49	8	2502-206	5/16-18 X 1-1/2 HHCS GR 5 ZYD
50	1	2565-466	SERIAL NUMBER DECAL
51	1	2502-237	3/8-16 X 1 HHCS GR 5 ZP
52	1	6600-520	SAFETY CHAIN ASSEMBLY
53	1	6600-521	WASHER, SAFETY CHAIN
54	1	2520-515	3/4-10 LOCK HEX NUT ZP
55	4	2520-352	1/2-13 HEX NUT ZP
56	2	2565-457	EYE, EAR, FACE WARNING DECAL
57	5	2515-405	CABLE TIE, BLACK
58	17	2515-552	CABLE TIE, .15 X 11.5", BLACK
59	1	1300-435	LIGHT BAR
60	4	1300-436	AMBER LIGHT BRACKET
61	2	1300-437	RED LIGHT BRACKET
62	2	1300-438	LIGHT BAR MOUNT STRAP
63	4	2502-252	3/8-16 X 1-1/2 HHCS GR. 2 ZP
64	3	2520-357	1/2-13 HEX LOCK NUT ZP
65	2	2502-200	5/16-18 X 3/4 HHCS GR 2 ZP
66	1	1300-443	SMV BRACKET
67	1	1300-445	MODULE, IMPLEMENT TURN SIGNAL
68	2	2565-460	REFLECTOR, FL ORANGE, 2 X 9
69	1	1300-446	HARNESS, COMMON WIRING
70	2	1300-447	LAMP, RED
71	2	1300-448	LAMP, AMBER
72	4	2502-195	M8 X 12MM HHCS GR5 ZP
73	4	2505-205	5/16-18 X 3/4 CAR BOLT GR 5 ZP
74	4	2520-206	5/16-18 FLANGE LOCK NUT
75	2	2502-293	1/2-13 X 1 1/4 HHCS GR 5 ZP
76	8	2502-245	3/8-16 X 1-3/4 HHCS GR. 5 ZP
77	2	2570-589	1/2 X 1-1/4 X 2-1/2 U-BOLT ZYD
78	4	2525-352	1/2 MED LOCKWASHER ZP
79	2	2565-475	SEED TANK DECAL

PARTS IDENTIFICATION



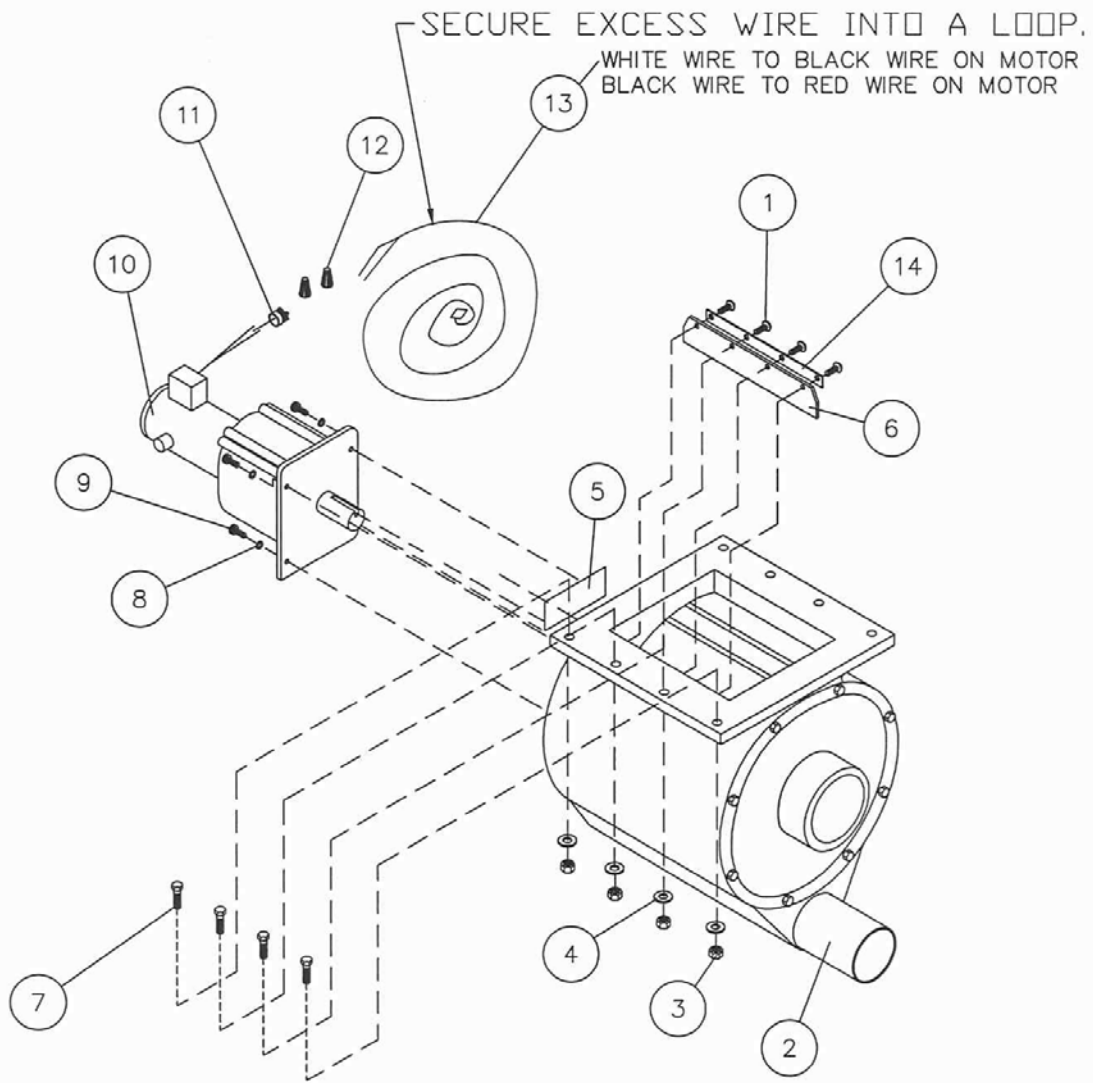
1655-3

1300-183 POWER UNIT ASSEMBLY (12/06 - PRESENT)

DET	QTY	PART NO.	DESCRIPTION	DET	QTY	PART NO.	DESCRIPTION
1	2	2502-224	5/16-18 X 4 HHCS GR 5 ZP	27	4	2520-352	1/2-13 HEX NUT ZP
2	2	2526-201	5/16 STANDARD FLATWASHER ZP	28	1	2532-827	2" POLY PIPE STREET ELBOW 90°
3	1	1300-623	SHIELD FRONT	29	4	2505-260	3/8-16 X 1 CAR BLT GR 5 ZP
4	1	2565-457	EYE, EAR, & FACE WARNING DECAL	30	1	1300-385	BLOWER MOUNT PLATE
5	1	2565-439	SEED JET II DECAL	31	1	1300-217	BLOWER ADJUSTMENT W.A.
6	1	1300-648	V-BELT, 3VX500	32	2	2502-317	1/2-13 X 1-3/4 HHCS GR. 5 ZP
7	1	2590-035	1/4 X 1/4 X 1 KEY	33	2	2502-294	1/2-13 X 1-1/2 HHCS GR. 5 ZP
8	2	1300-556	.37IDX1/2ODX3-1/8 SHIELD BUSH.	34	1	1300-614	SOLENOID INTERFACE MODULE (10/01)
9	1	1300-644	3/4" SPLIT TAPER BUSHING	35	4	2502-105	1/4-20 X 3/4 HHCS GR.5 Z.P.
10	1	1300-645	1" SPLIT TAPER BUSHING	36	4	2525-151	1/4 MED. LOCKWASHER ZP
11	2	2502-316	1/2-13 X 3-1/2 HHCS GR 5 ZP	37	8	2520-251	3/8-16 HEX NUT ZP
12	4	2525-352	1/2 MED LOCKWASHER ZP	38	4	2502-240	3/8-16 X 2 HHCS GR5 ZP
13	2	1300-643	5" PULLEY, 23V500 SH	39	1	1300-245	POWER UNIT FRAME W.A. (8/00)
14	2	2502-232	3/8-16 X 1 1/2 HHCS GR 5 ZYD	40	1	1300-613	MOTOR, B&S 11HP (235437)
15	1	2502-246	3/8-16 X 3 HHCS GR5 ZP	41	1	2514-311	TOP TERM BAT CABLE,6GA X 30"
16	2	2525-201	5/16 MED. LOCKWASHER ZP	42	1	2532-826	2" SHORT POLY PIPE NIPPLE
17	1	2514-312	TOP TERM BAT CABLE, 6GA. X 15"	43	1	2532-825	2" POLY PIPE TEE
18	10	2525-251	3/8 MED. LOCKWASHER ZP	44	1	2532-829	90° MALE ADAPTER/2" M THD
19	7	2526-251	3/8 STANDARD FLATWASHER ZP	45	1	2565-481	ENGINE STOP DECAL
20	1	1300-647	SHIELD BACK (2006)	46	4	2520-151	1/4-20 HEX NUT ZP
21	1	1300-646	.531IDX3/4ODX1.813" BLOWER SPACER	47	1	1300-383	BATTERY CLAMP, PAINTED
22	2	2520-201	5/16-18 HEX NUT ZP	48	6	2520-151	1/4-20 HEX NUT ZP
23	2	1300-612	.385 IDX.625 ODX.5 LONG BUSH.	49	1	2532-828	2" VENT CAP W/SCREEN
24	1	1300-637	MODULE SWITCH ASSEMBLY	50	2	1300-407	J-BOLT, 1/4-20 X 7 1/2 ZP.
25	1	2532-828	2" VENT CAP W/SCREEN				
26	1	1300-404	BLOWER, ROOTS 33 URAL, BLACK				

REVISED 12/19/06

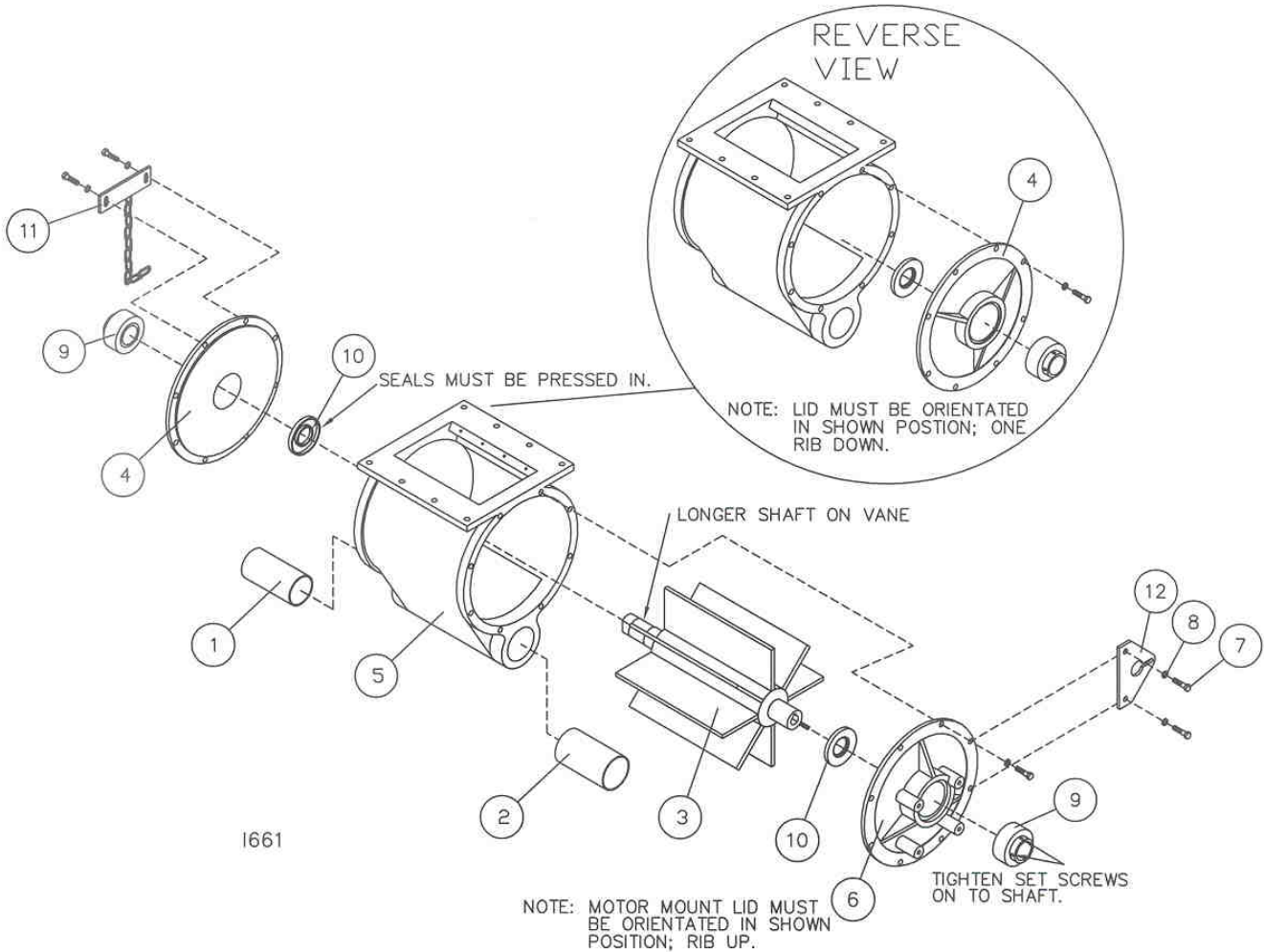
PARTS IDENTIFICATION



1300-151 - AIRLOCK & MOTOR ASSEMBLY

DET	QTY	PART NO.	DESCRIPTION
1	4	2511-154	#10-24 X 1/2 PAN HD MACH SCR ZP
2	1	1300-119	AIRLOCK ASSEMBLY
3	8	2520-205	5/16-18 HEX LOCK NUT ZP
4	8	2526-201	5/16-18 STD FLATWASHER ZP
5	1	2565-440	AIRLOCK ROTATION DECAL
6	1	1300-641	AIRLOCK WIPER
7	8	2502-206	5/16-18 X 1 1/2 HHCS GR. 5 ZP
8	4	2525-151	1/4 MED. LOCKWASHER ZP
9	4	2510-107	1/4-20 X 1 HEX SOCK SCREW GR. 8
10	1	2514-345	12V DC MOTOR, 1/5HP,PM, 34:1
11	1	1300-409	3/8" ROMEX PLUG CONNECTOR
12	2	1300-408	GB-3 ORANGE WIRE CONNECTOR
13	1	1300-419	MOTOR POWER CABLE, 23', 14-2,CON
14	1	1300-642	WIPER BACKING PLATE

PARTS IDENTIFICATION

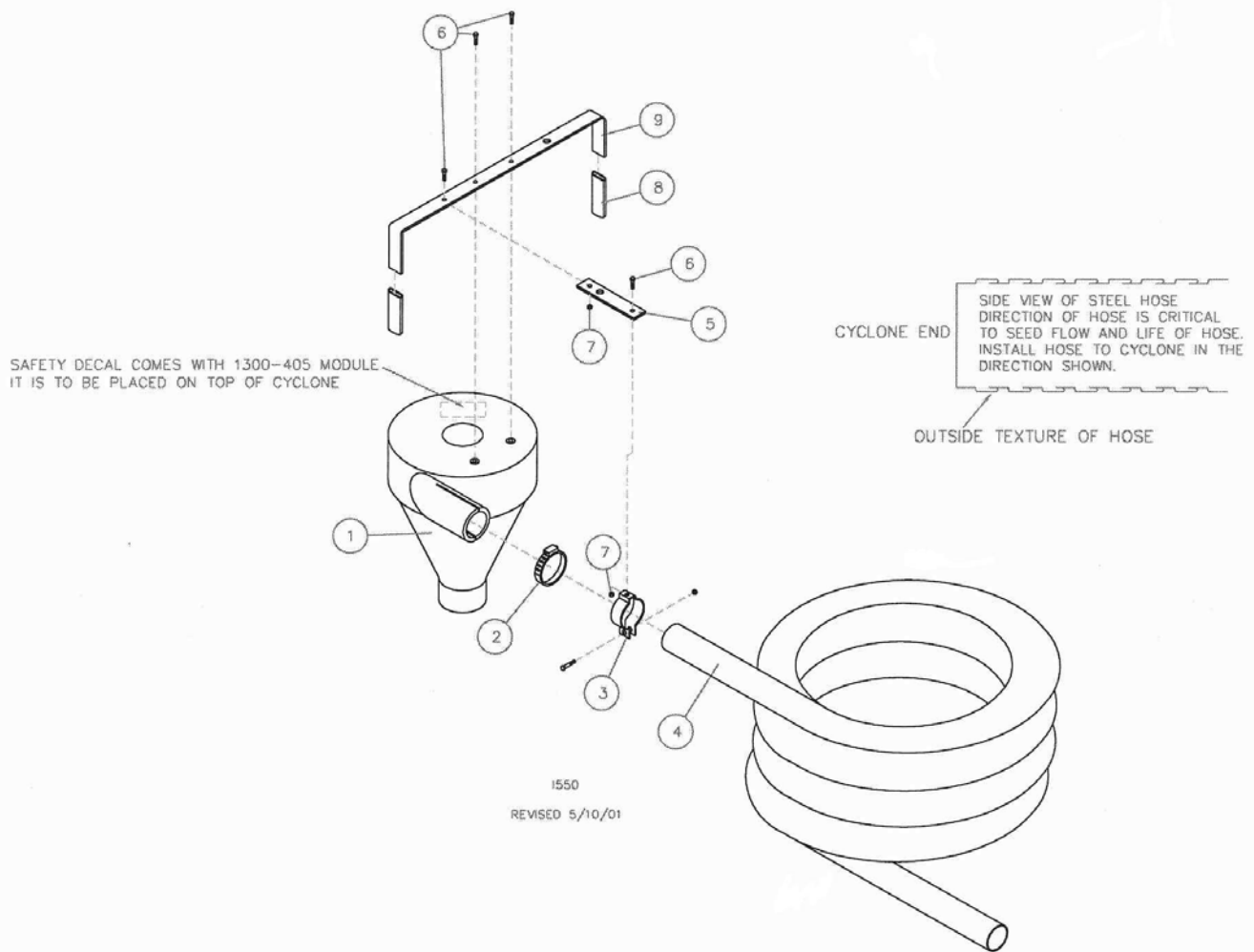


1300-119 – AIRLOCK ASSEMBLY

DET	QTY	PART NO.	DESCRIPTION
1	1	1300-593	2" AIRLOCK FITTING
2	1	1300-594	2 1/4" AIRLOCK FITTING
3	1	1300-571	AIRLOCK VANE (7/00)
4	1	1300-430	AIR LOCK LID
5	1	1300-431	AIR LOCK MAIN BODY
6	1	1300-434	MOTOR MOUNTING LID
7	16	2502-198	5/16-18 X 1 HHCS GR.5 ZP
8	16	2525-201	5/16 MED. LOCKWASHER ZP
9	2	2550-118	BEARING, MCGILL #ER20S
10	2	2550-062	SEAL, CHICAGO RAWHIDE #CR12631
11	1	1300-219	SEED GATE STOP W.A.
12	1	1300-364	BRACKET

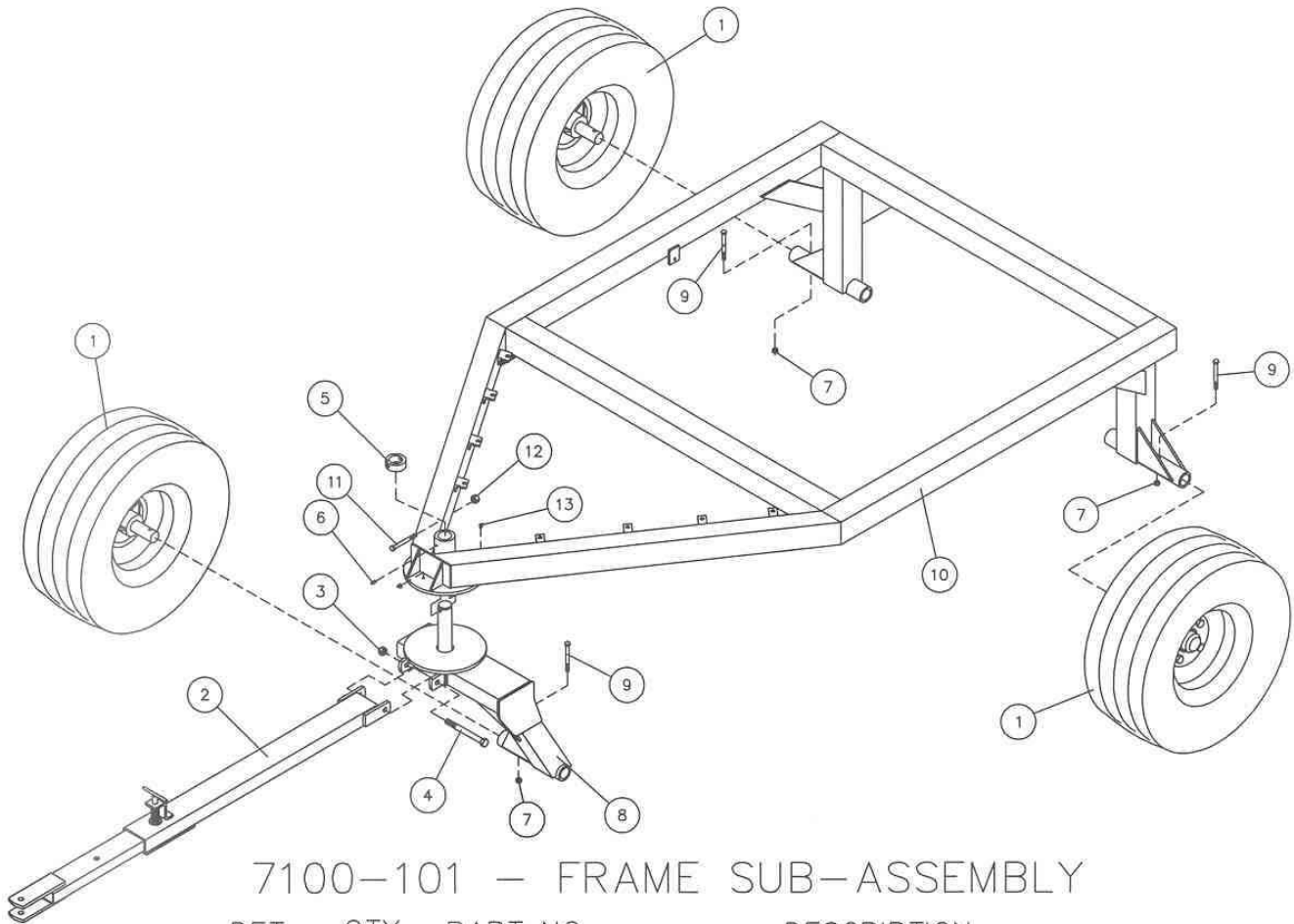
PARTS IDENTIFICATION

1300-124 SEED JET II HOSE ASSEMBLY



KEY	QTY	PART NO.	DESCRIPTION
1	1	1300-376	CYCLONE, BLACK
2	2	2570-717	HOSE CLAMP, #36, TYPE F, STYLE 1
3	1	1300-411	4" X 3" DIA. BLACK SHRINK TUBE
4	1	1300-395	2-1/4" ID X 35 FT. STAINLESS HOSE

PARTS IDENTIFICATION

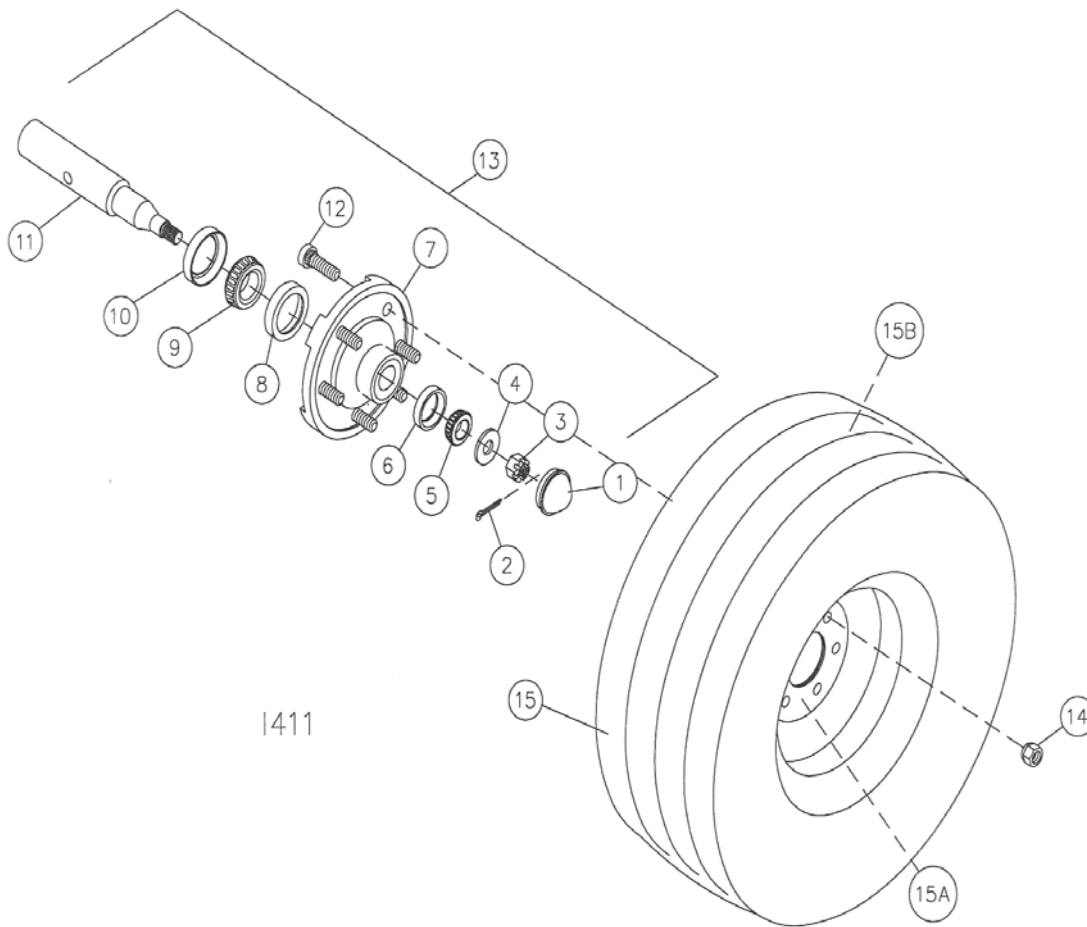


7100-101 - FRAME SUB-ASSEMBLY

DET	QTY	PART NO.	DESCRIPTION
1	3	7100-112	WHEEL & HUB (31-13.5 X 15) ASSY
2	1	7100-102	TONGUE ASSY
3	1	2520-515	3/4-10 LOCK HEX NUT
4	1	2502-405	3/4-10 X 8 HHCS GR 5 ZP
5	1	7100-399	BUSHING, PIVOT PIN
6	1	2533-110	1/4-28 ZERK STRAIGHT SELF-TAP
7	3	2520-357	1/2-13 LOCK HEX NUT ZP
8	1	7100-202	FRONT LEG W.A.
9	3	2502-313	1/2-13 X 3 HHCS GR 5 ZP
10	1	7100-200	FRAME W.A.
11	1	2502-246	3/8-16 X 3 HHCS GR 5 ZP
12	1	2520-255	3/8-16 LOCK HEX NUT
13	2	2533-107	1/4-28 ZERK (90 DEG) SELF TAP

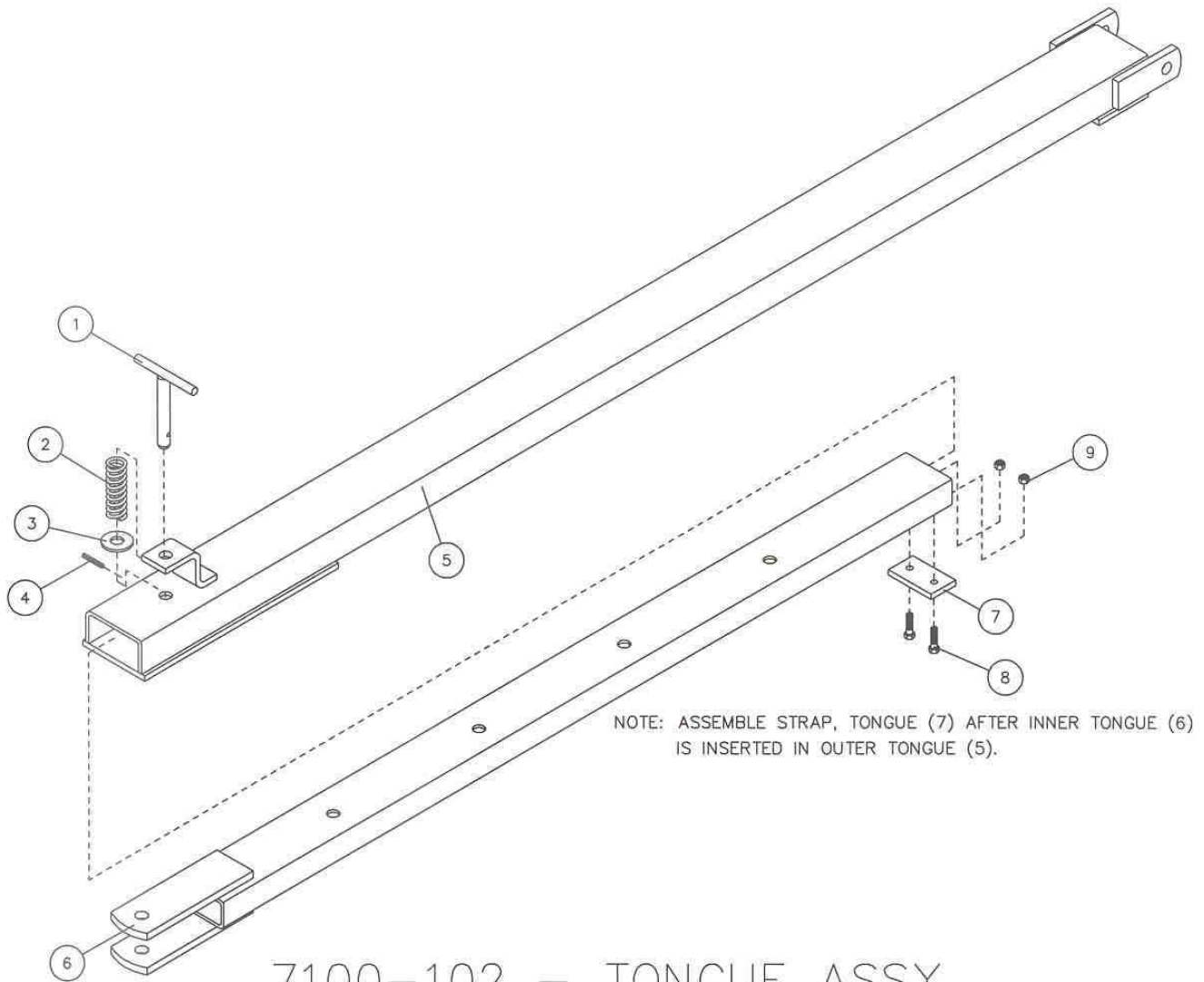
PARTS IDENTIFICATION

WHEEL & HUB (31-13.5 X 15) ASSEMBLY



KEY	QTY	PART NO.	DESCRIPTION
1	1	2570-192	HUB CAP
2	1	2531-106	3/16 X 1-3/4" COTTER PIN, BLACK
3	1	2520-501	3/4-16 SLOTTED HEX NUT ZP
4	1	2526-501	3/4 STD. FLATWASHER ZP
5	1	2550-027	CONE, LM# 67048
6	1	2550-029	CUP, LM #67010
7	1	2570-189	HUB W/CUPS, LUGS
8	1	2550-030	CUP, LM#29710
9	1	2550-028	CONE, LM#29749
10	1	2570-191	SEAL
11	1	6600-336	SPINDLE, 1-3/4" DRILLED
12	6	2570-190	STUD, 1/2-20
13	1	6600-111	HUB & SPINDLE ASSY., 6 BOLT
14	6	2520-360	1/2-20 LUG NUT
15	1	7100-111	WHEEL/TIRE (31-13.5 X 15) ASSY
15A	1	2570-727	WHEEL, 15 X 10, WHITE
15B	1	2570-728	TIRE, 31-13.5 X 15, 8 PLY

PARTS IDENTIFICATION



7100-102 – TONGUE ASSY

DET	QTY	PART NO.	DESCRIPTION
1	1	7100-210	PIN, TONGUE W.A. ZP
2	1	2550-761	THROW OUT CLUTCH SPRING, BLACK
3	1	2526-501	3/4 STANDARD FLATWASHER, ZP
4	1	2530-153	1/4 X 2 ROLL PIN ZP
5	1	7100-205	OUTER TONGUE W.A.
6	1	7100-206	INNER TONGUE W.A.
7	1	7100-392	STRAP, TONGUE W.A.
8	2	2502-237	3/8-16 X 1 HHCS GR 5 ZP
9	2	2520-255	3/8-16 LOCK HEX NUT ZP

TROUBLESHOOTING

Problem	Cause	Solution
Airlock will not turn on/off.	Frame mount relay not functioning.	Replace frame mounted solenoid.
	No voltage from alternator.	Check output from alternator
	Loose connections.	Check plug in on duplex wires Check connections at 12V motor Check ground and solenoid connections
	Blown fuse	Replace 25 amp round fuse located in the 1300-405 interface module. (Automotive type)
Airlock will not turn.	Foreign objects jamming airlock.	Remove obstacles
	Key sheared.	Check key between motor gearbox and airlock shaft
	12V motor faulty	Check motor operation
	Wet seed left in airlock.	Remove wet seed.
Low rate of discharge of grain.	Lack of air pressure	Check B & S motor is at full throttle. Check for air leaks in hose or at couplers.
	Airlock running too slow	Ensure 12V supply is correct. Overloaded, close up slide gate.
	Excessive discharge-height of cyclone	Reduce height of cyclone
Abnormal noises in power unit assembly.	Drive belt too loose. Overloaded blower	Re-tension the V-belt. Close up slide gate in hopper.
	Engine problems Blower problems	Refer to engine manual. Refer to blower manual.
Dust coming out of top of cyclone.	Dusty/dirty seed or seed treatment	Install filter in top of cyclone. Wear a full-face respirator. Read the seed tag for respirator recommendations.

Our name Is getting known

Just a few years ago, Yetter products were sold primarily to the Midwest only. Then we embarked on a program of expansion and moved into the East, the South, the West and now north into Canada. We're even getting orders from as far away as Australia and Africa.

So, when you buy Yetter products . . .you're buying a name that's recognized. A name that's known and respected. A name that's become a part of American agriculture and has become synonymous with quality and satisfaction in the field of conservation tillage.

Thank you.

YETTER MANUFACTURING CO.
Colchester, IL 62326-0358 • 309/776-4111
Toll Free 800/447-5777
Fax 309/776-3222
Website: WWW.YETTERCO.COM
E-MAIL: INFO@YETTERCO.COM

2565-456 ■ 01/08