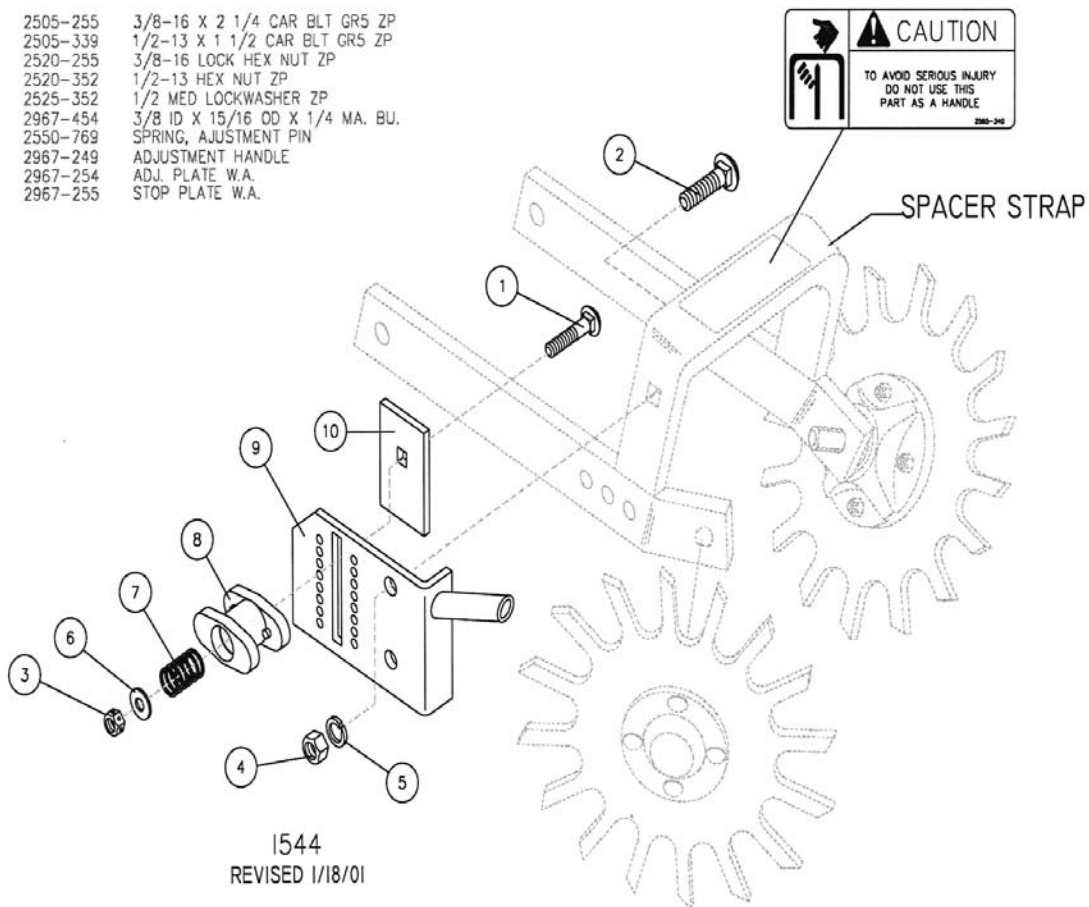


# Yetter

...for land's sake

## 2967-070 QUICK ADJUST FOR 2967-115

KEY	QTY.	PART NO.	DESCRIPTION
1	1	2505-255	3/8-16 X 2 1/4 CAR BLT GR5 ZP
2	1	2505-339	1/2-13 X 1 1/2 CAR BLT GR5 ZP
3	1	2520-255	3/8-16 LOCK HEX NUT ZP
4	1	2520-352	1/2-13 HEX NUT ZP
5	1	2525-352	1/2 MED LOCKWASHER ZP
6	1	2967-454	3/8 ID X 15/16 OD X 1/4 MA. BU.
7	1	2550-769	SPRING, ADJUSTMENT PIN
8	1	2967-249	ADJUSTMENT HANDLE
9	1	2967-254	ADJ. PLATE W.A.
10	1	2967-255	STOP PLATE W.A.



**YETTER MANUFACTURING CO.**  
 FOUNDED 1930

Colchester, IL 62326-0358  
 Toll free: 800/447-5777  
 309/776-3222 (Fax)

Website: [www.yetterco.com](http://www.yetterco.com)  
 E-mail: [info@yetterco.com](mailto:info@yetterco.com)

# Yetter

## INSTALLATION

1. To install the quick adjust assembly on the combo arm, you must first remove the ½" x 1 ½" carriage bolt (#2 2505-339) from the assembly.
2. Insert the ½ x 1 ½" carriage bolt through the square hole of the spacer strap located on the depth adjustment side of the combo arm.
3. Attach the quick adjust assembly to the ½" x 1 ½" carriage bolt using the lockwasher and hex nut provided.
4. Once installed the quick adjust will act as a down stop for the residue manager wheels.
5. Make certain to check that your planter is operating at the manufacturer's recommended frame height and is level.
6. Once a depth setting is chosen, check to see if residue manager wheels and the spacer strap have proper clearance during field operation. Failure to do so may result in equipment damage.

**DANGER DO NOT USE SPACER STRAP ON COMBO ARM W.A. AS A HANDLE, FINGERS MAY BE SERIOUSLY INJURED ON SHARP EDGE OF BLADE.**