



**TITAN™  
RESIDUE MANAGER  
FOR  
CNH PLANTER UNITS  
2967-023/024  
OPERATOR'S MANUAL  
PART IDENTIFICATION**

**YETTER MANUFACTURING CO.**  
*FOUNDED 1930*

Colchester, IL 62326-0358  
Toll free: 800/447-5777  
309/776-3222 (Fax)  
Website: [www.yetterco.com](http://www.yetterco.com)  
E-mail: [info@yetterco.com](mailto:info@yetterco.com)

**YETTER**

## FOREWORD

You've just joined an exclusive but rapidly growing club.

For our part, we want to welcome you to the group and thank you for buying a Yetter product.

We hope your new Yetter products will help you achieve both goals-increase your productivity and increase your efficiency so that you may generate more profit.

This operator's manual has been designed into four major sections: Foreword, Safety Precautions, Installation Instructions and Parts Breakdown.



This **SAFETY ALERT SYMBOL** indicates important safety messages in the manual. When you see this symbol, be alert to the possibility of **PERSONAL INJURY** and carefully read the message that follows.

The word **NOTE** is used to convey information that is out of context with the manual text. It contains special information such as specifications, techniques and reference information of a supplementary nature.

The word **IMPORTANT** is used in the text when immediate damage will occur to the machine due

to improper technique or operation. Important will apply to the same information as specified by note only of an immediate and urgent nature.

It is the responsibility of the user to read the operator's manual and comply with the safe and correct operating procedure and to lubricate and maintain the product according to the maintenance schedule in the operator's manual.

The user is responsible for inspecting his machine and for having parts repaired or replaced when continued use of the product would cause damage or excessive wear to the other parts.

It is the user's responsibility to deliver his machine to the Yetter dealer who sold him the product for service or replacement of defective parts, which are covered by the warranty policy.

If you are unable to understand or follow the instructions provided in this publication, consult your local Yetter dealer or contact:

### **YETTER MANUFACTURING CO.**

309/776-4111

800/447-5777

309/776-3222 (FAX)

Website: [www.yetterco.com](http://www.yetterco.com)

E-mail: [info@yetterco.com](mailto:info@yetterco.com)

## WARRANTY

Yetter Manufacturing warrants all products manufactured and sold by it against defects in material. This warranty being expressly limited to replacement at the factory of such parts or products as shall appear to be defective after inspection. This warranty does not obligate the Company to bear cost of labor in replacement of parts. It is the policy of the Company to make improvements without incurring obligations to add them to any unit already sold. No warranty is made or authorized to be made, other than herein set forth. This warranty is in effect for one year after purchase.

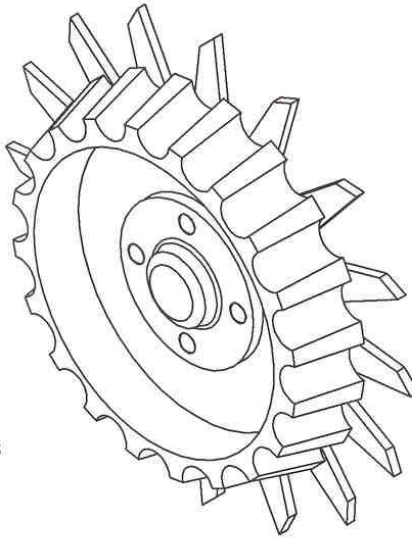
DEALER: \_\_\_\_\_

**Yetter Manufacturing warrants its own products only and cannot be responsible for damages to equipment on which mounted.**

## TABLE OF CONTENTS

Introduction.....	pg.2
Warranty.....	pg.2
Table of Contents.....	pg.3
Optional Equipment.....	pg.3
Safety Information.....	pg.4
Bolt Torque.....	pg.5
Use Guide/Troubleshooting.....	pg.6-7
Installation Instruction.....	pg.8-10
Operation.....	pg.11
Maintenance.....	pg.12-17
Parts Identification.....	pg.18-19

## OPTIONAL EQUIPMENT



S280-3

2967-186 FLOATER WHEEL  
L.H. ASSEMBLY SHOWN  
(2) REQUIRED PER ROW

## SAFETY

### A brief description of signal words that may be used in this manual:

**CAUTION:** Used as a general reminder of good safety practices or to direct attention to unsafe practices.

**WARNING:** Denotes a specific potential hazard.

**DANGER:** Denotes the most serious specific potential hazard.

### SAFETY PRECAUTIONS

You can make your farm a safer place to live and work if you observe the safety precautions given. Study these precautions carefully and insist that those working with you and for you follow them.

Finally, remember this: an accident is usually caused by someone's carelessness, neglect or oversight.



#### WARNING

Never clean, lubricate or adjust a machine that is in motion. Always lower or block the implement before performing service.

If the machine must be serviced in the raised position, jack or block it up to prevent it from accidentally falling and injuring someone.

Do not allow riders on the tractor or implement.

Use speeds and caution dictated by the terrain being traversed. Do not operate on any slope steep enough to cause tipping or loss of control.

Be sure all personnel are clear of the immediate area before operating.

Read and understand the operator's manual and require all other persons who will operate the equipment to do the same.

Be familiar with all tractor and implement controls and be prepared to stop engine and implements quickly in an emergency.



#### CAUTION

Consult your implement and tractor operator's manual for correct and safe operating practices.

Beware of towed implement width and allow safe clearance.

**FAILURE TO HEED MAY RESULT IN PERSONAL INJURY OR DEATH.**

# BOLT TORQUE

## Mounting bolts and hardware

Before operating the Titan™ Residue Manager for the first time, check to be sure that all hardware is tight. Check all hardware again after approximately 50 hours of operation and at the beginning of each planting season.

All hardware used on the Titan™ Residue Manager is Grade 5 unless otherwise noted. Grade 5 cap screws are marked with three radial lines on the head. If hardware must be replaced, be sure to replace it with hardware of equal size, strength and thread type. Refer to the torque values chart when tightening hardware.







**Important:** Over tightening hardware can cause as much damage as when under tightening. Tightening hardware beyond the recommended range can reduce its shock load capacity.

The chart below is a guide for proper torque. Use it unless a specified torque is called out elsewhere in the manual.

Torque is the force you apply to the wrench handle or the cheater bar, times the length of the handle or bar.

Use a torque wrench whenever possible.

The following table shows torque in ft. lbs. for coarse thread hardware.

BOLT DIA. AND THREADS PER INCH	 GRADE 2	 OR  GRADE 5 A-325	 GRADE 8
1/4	6	10	14
5/16	12	20	30
3/8 - 16	25	35	50
7/16 - 14	35	55	80
1/2 - 13	55	85	125
9/16 - 12	75	125	175
5/8 - 11	105	170	235
3/4 - 10	185	305	425
7/8 - 9	170	445	690
1-8	260	670	1030
1 1/8 - 7	365	900	1460
1 1/4 - 7	515	1275	2060
1 3/8 - 6	675	1675	2700
1 1/2 - 6	900	2150	3500
1 3/4 - 5	1410	3500	5600

Lubricate all bearings and moving parts as assembled and make certain that they work freely.



**WARNING:** Never work around the toolbar/implement while in a raised position without using safety lockups.



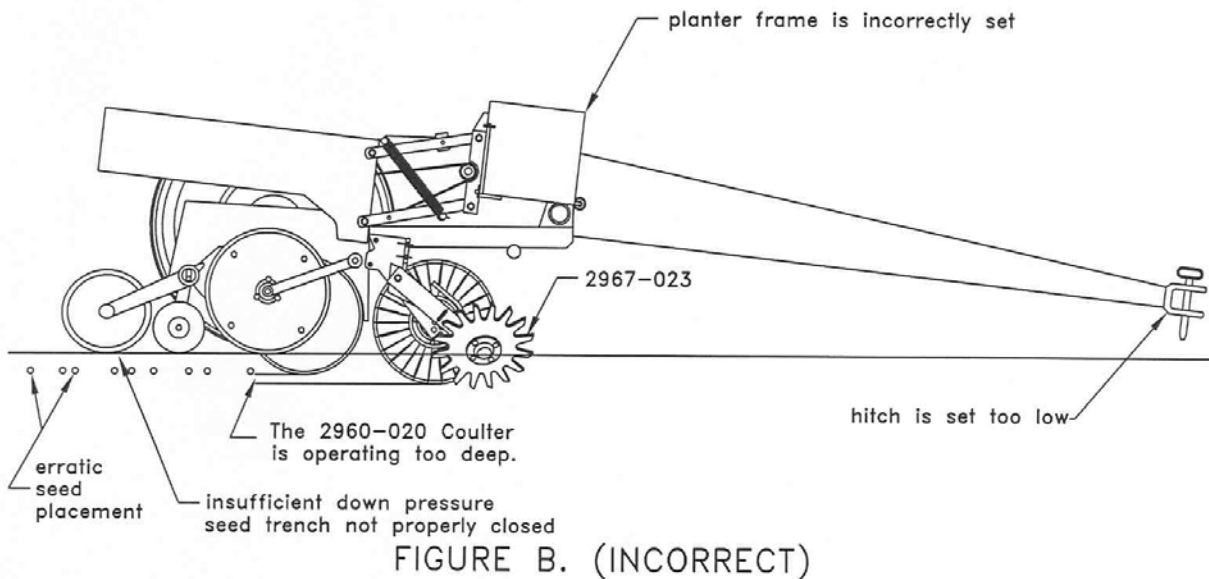
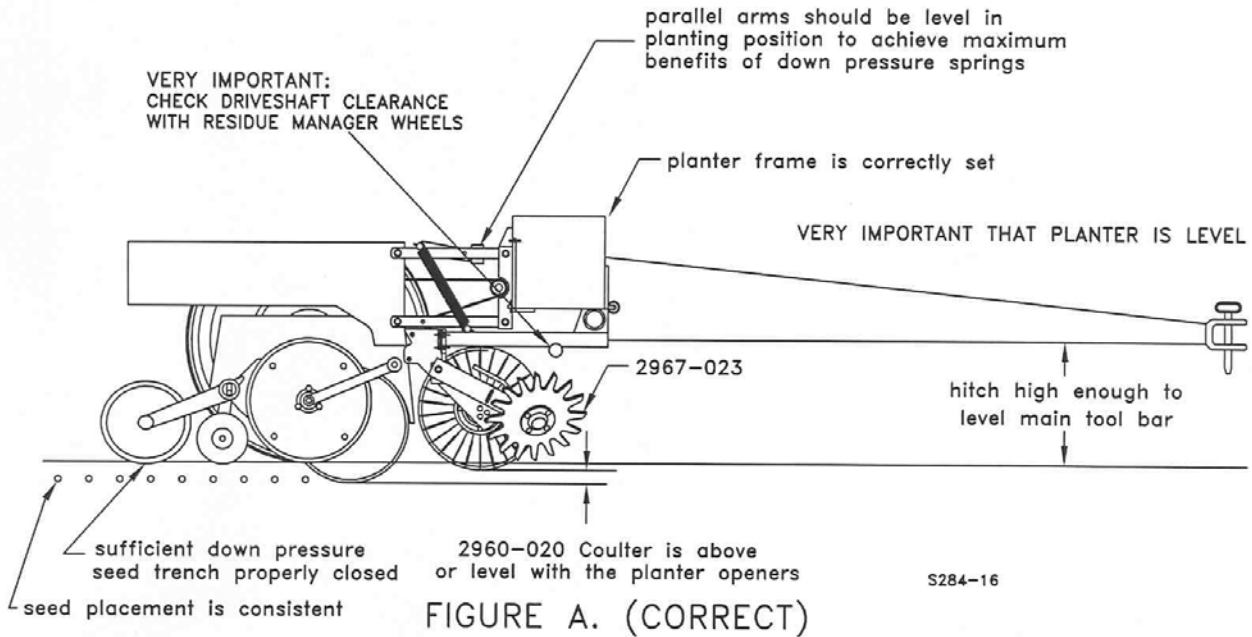
**CAUTION:** The Residue manager attachments are very heavy. Pay extra attention to lifting techniques while handling and or maneuvering the opener during assembly. Failure to do so may lead to personal injury.

# OPERATION/USE GUIDE/TROUBLESHOOTING



**IMPORTANT:** Please check the amount of travel that the planter row unit has **before** going to the field to plant.

**NOTE:** The recommended height of a level planter toolbar frame is 20"-22". Always visually check seed spacing and depth-calibrate your equipment if necessary.



**Figure A.** – The planter hitch and frame are both 20" off the ground. To ensure this, visually check to see that the planter boxes are level and that the planter unit parallel arms are also parallel with the ground.

**When using planter attachments located in front of the planter unit, this setting is very important.**

**Figure B.** – The planter hitch is set too low while the planter frame remains at 20" off the ground! Notice from the illustration that the unit mounted coulter is running deeper in the ground than the planter unit. This condition can result in the formation of an air pocket below the seedbed, which will in turn dramatically decrease seed growth.

**NOTE:** Both illustrations are strictly for reference only. They are intended to show that proper adjustment of the hitch height is critical. Consult your planter operator's manual for the proper height adjustment of the hitch.

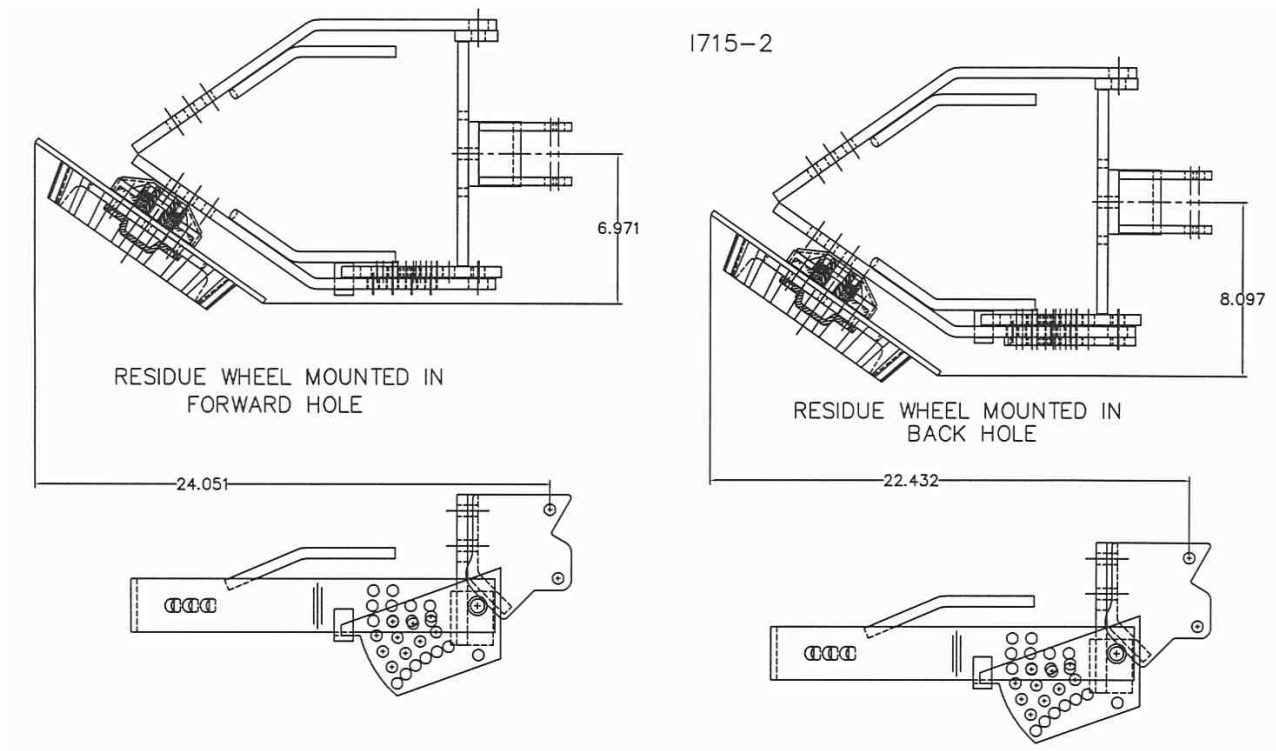
# OPERATION/USE GUIDE/TROUBLESHOOTING



**IMPORTANT:** Please check the amount of travel that the planter row unit has **before** going to the field to plant.



**IMPORTANT:** Check the drive shaft clearance with the residue manager wheels. If the residue manager wheels can make contact with the drive shaft, the drive shaft could be damaged.

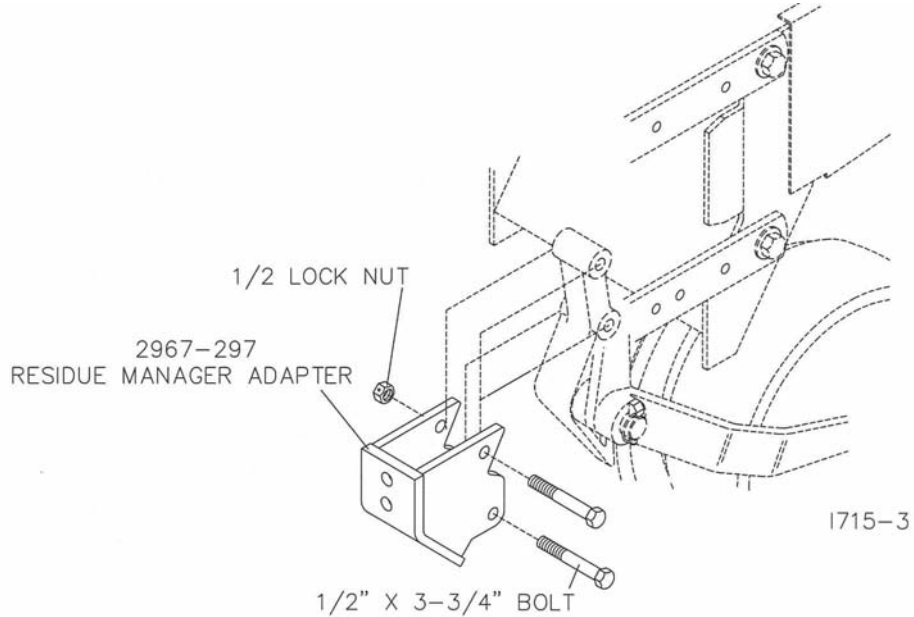


# INSTALLATION INSTRUCTIONS

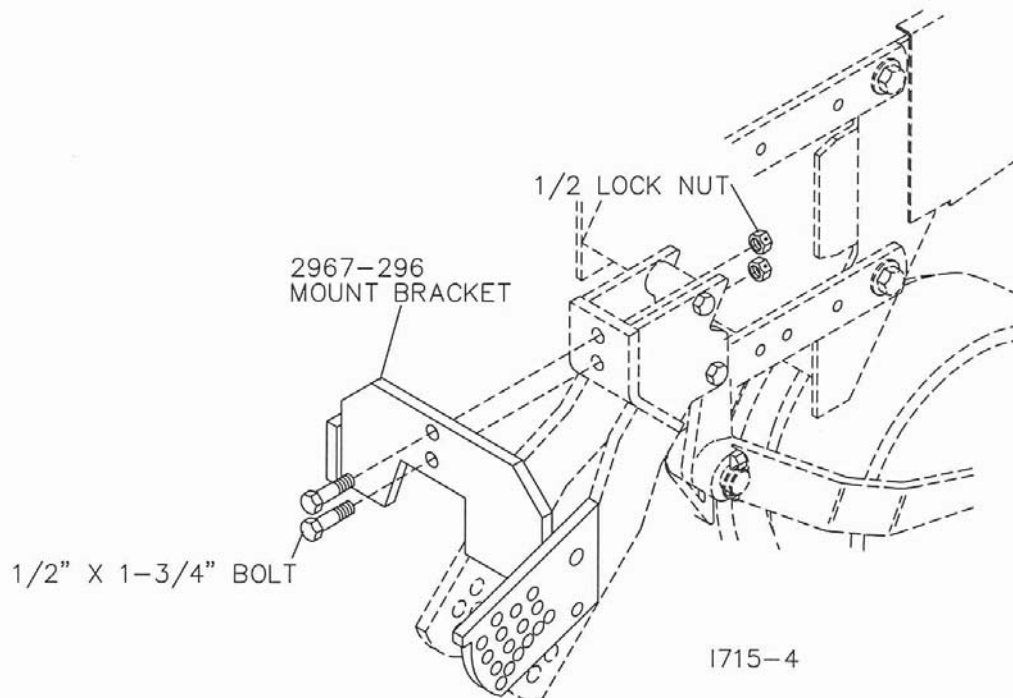
## 2967-023 - TITAN™ RESIDUE MANAGER WITH A 2960 COULTER

## 2967-024 - TITAN™ RESIDUE MANAGER WITHOUT A 2960 COULTER

**NOTE:** If you are using a 2960 unit mounted coulters, skip STEP 1 and proceed to STEP 2.



**STEP 1.** Attach the 2967-297 residue manager adapter to the planter using the 2) 1/2" x 3-3/4" bolts and lock nuts.

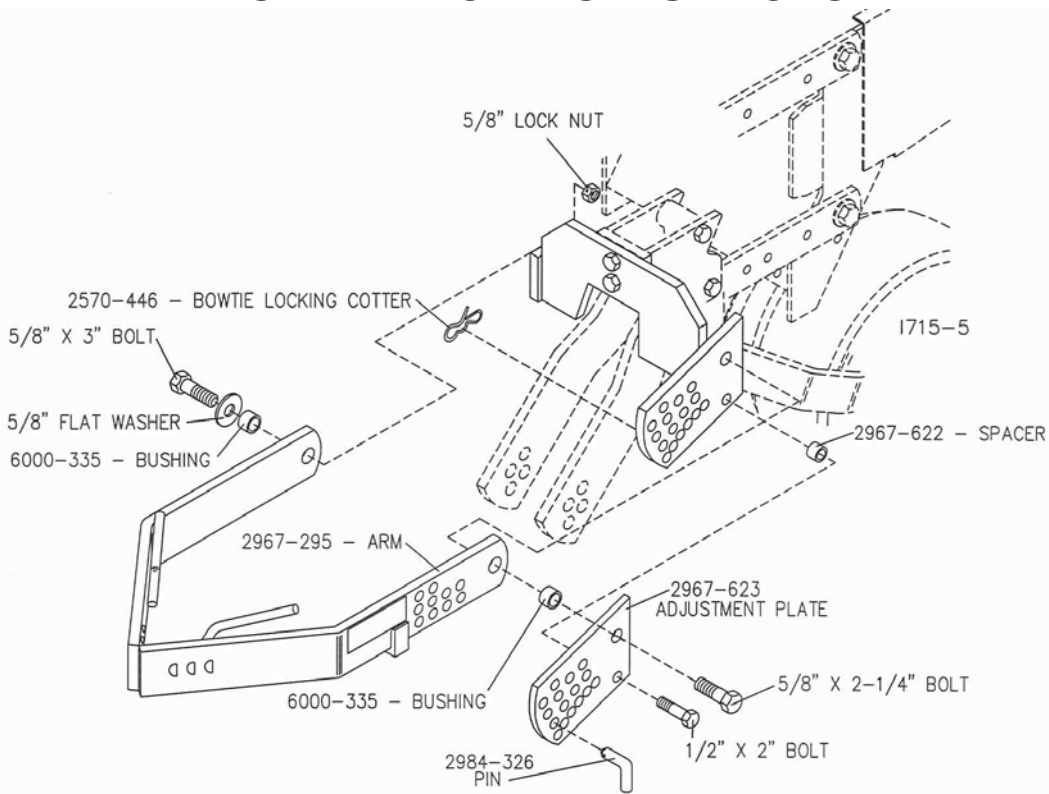


**\* BLADE REMOVED FOR CLARITY**

**STEP 2.** Attach the 2967-296 mount bracket to the coulters using 2) 1/2" x 1-3/4" bolt and 1/2" lock nuts.



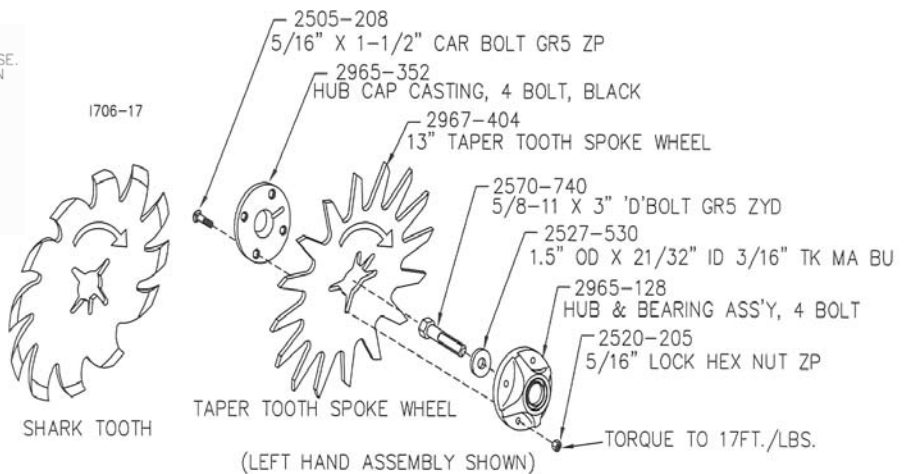
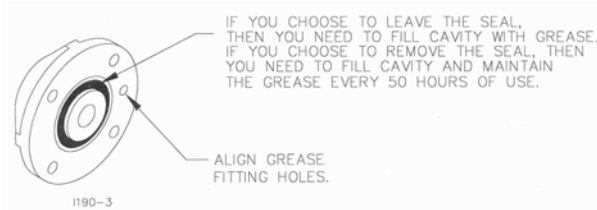
# INSTALLATION INSTRUCTIONS



**STEP 3.** Attach the 2967-295 arm to the 2967-296 mount bracket using the 5/8" bolts, flat washers, bushings, 2967-623 adjustment plate and 5/8" lock nuts. Also, install the 1/2" x 2" bolt, 2967-622 spacer, 1/2" lock nut, 2984-326 pin and 2570-446 bowtie cotter on the 2967-623 adjustment plate.

**STEP 4.** Assemble the residue manager wheel to the 2965-352-hub cap and the 2965-128-hub/bearing assembly. Insert the D-bolt through the 1.50 O.D. x 21/32" I.D. x 3/16" thick flat washer, then through the hub/bearing assembly. Use 4) 5/16 x 1-1/2 carriage bolts and 5/16-18 lock nuts per wheel.

**NOTE:** Assemble one wheel as a right hand wheel rotation and one wheel as a left hand wheel rotation.



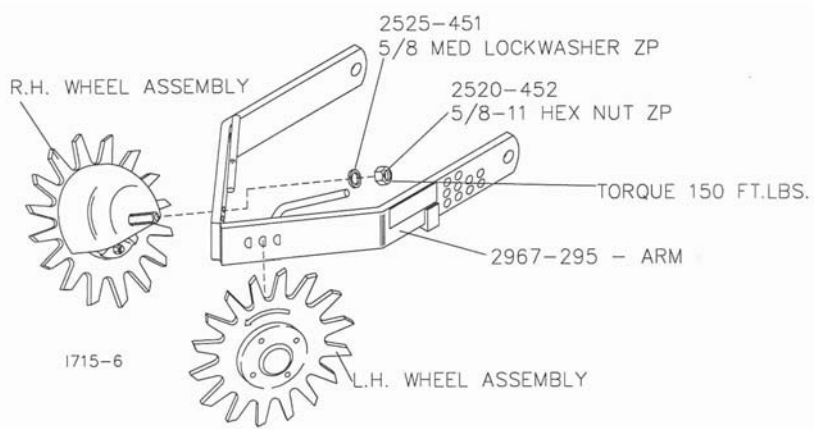
**IMPORTANT:** 2527-530 Washers must be installed or Residue Manager Wheel and hub assembly will fall off during use.

**NOTE:** Use general-purpose grease before use of the Residue Managers.

# INSTALLATION INSTRUCTIONS

**STEP 5** Choose the mounting hole in which to attach the R.M. wheels.

Attach the R.M. wheel/hub assemblies to the 2967-295 Combo Arm using 5/8" lock washers and hex nuts. Adjust the bearing shield to top dead center, rotate slightly forward. Torque to 150 ft./lbs.



REVISED 02/06/09

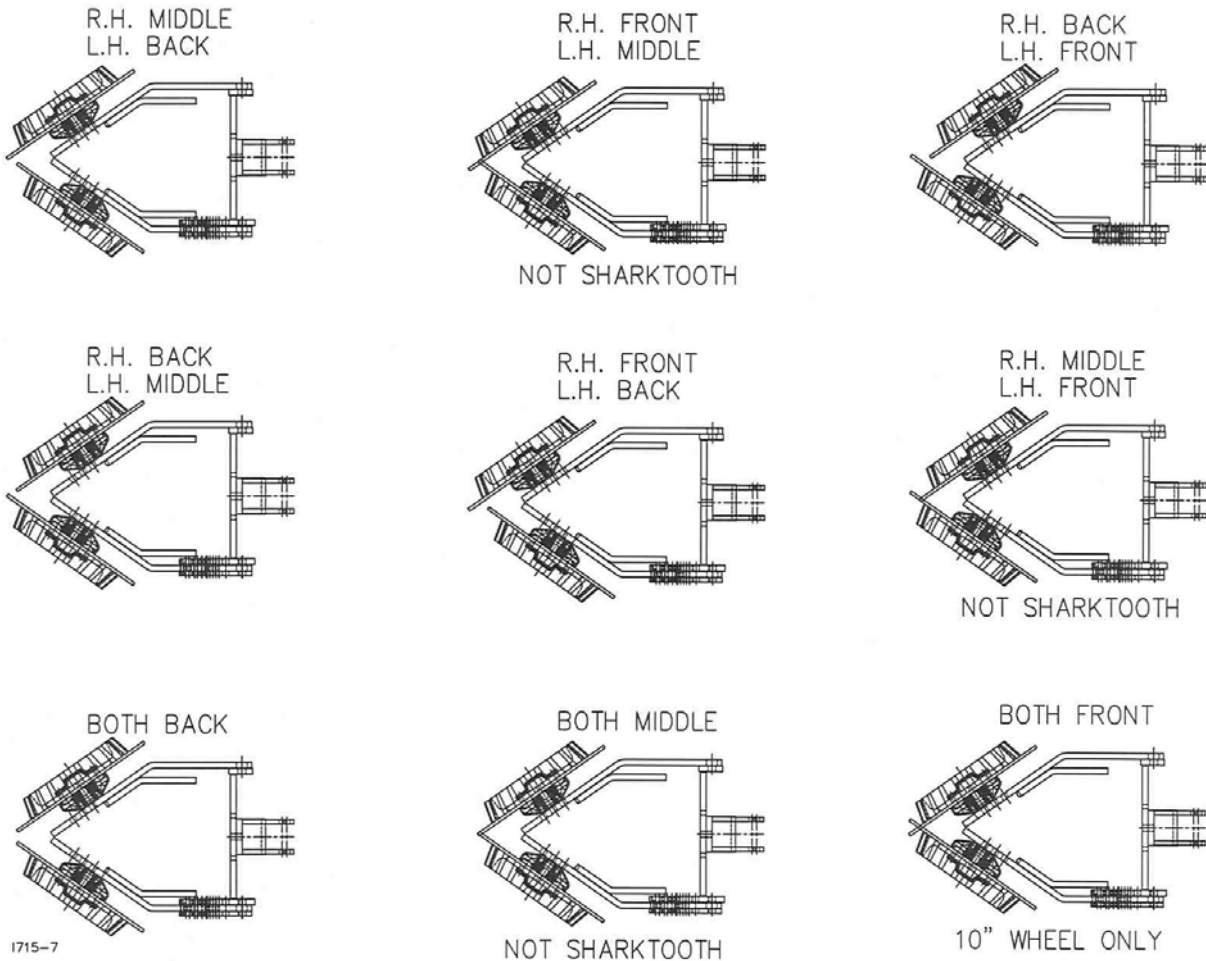
## MOUNTING CONFIGURATIONS FOR RESIDUE WHEELS

2967-404 - 13" TAPER TOOTH SPOKE WHEEL

2967-596 - 3/8" HEAVY DUTY SPOKE WHEEL

2967-602 - 13" SHARKTOOTH WHEEL

2967-388 - 10" TAPER TOOTH SPOKE WHEEL



## OPERATION



**CAUTION:** Where rocks are present the residue manager should be set in the “float” position, not locked down.

Adjust the residue manager to move crop residue aside and not move any soil. Adjustments to the residue manager may have to be made when changing field conditions and type and amount of residue. Use the handle for leverage when changing depth settings.

### “FLOAT SETTINGS”

Install the adjustment pin below the combo arm.

To raise the wheels, lift the 2967-295 and move the adjustment pin up.

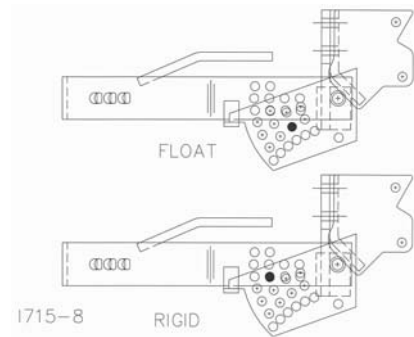
To lower the wheels, move the adjustment pin down.

### “RIGID SETTING”

Install the adjustment pin through the combo arm.

To raise the wheels, lift the 2967-295 combo arm to the desired position and insert the pin.

To lower the wheels, lower the combo arm to the desired position and insert the pin.



### ROW CLEANER DO'S AND DON'TS

1. **DO NOT** move soil; Residue Managers are designed to move crop residue only.
2. **DO NOT** operate planter at slow speeds, ground speed affects how aggressive the spoke wheels are; operate at sufficient speed (4-6 mph) to maintain good residue flow.
3. **DO NOT** expect 100% of crop residue to be cleared, it is not necessary and would necessitate engaging the soil. The width of path cleared depends on ground conditions, depth setting and ground speed.
4. **DO** expect to see wheels occasionally quit turning, indicates ideal (shallow) setting which is not moving soil.
5. **DO** adjust toolbar frame height 20”-22” and drawbar to “level” correctly. Very important to ensure planter opener will follow ground contours properly.

## MAINTENANCE

Regularly inspect the residue manager for loose or worn parts. Repair and replace as needed.

### BEARING ASSEMBLY AND LUBRICATION

#### Practice Safety

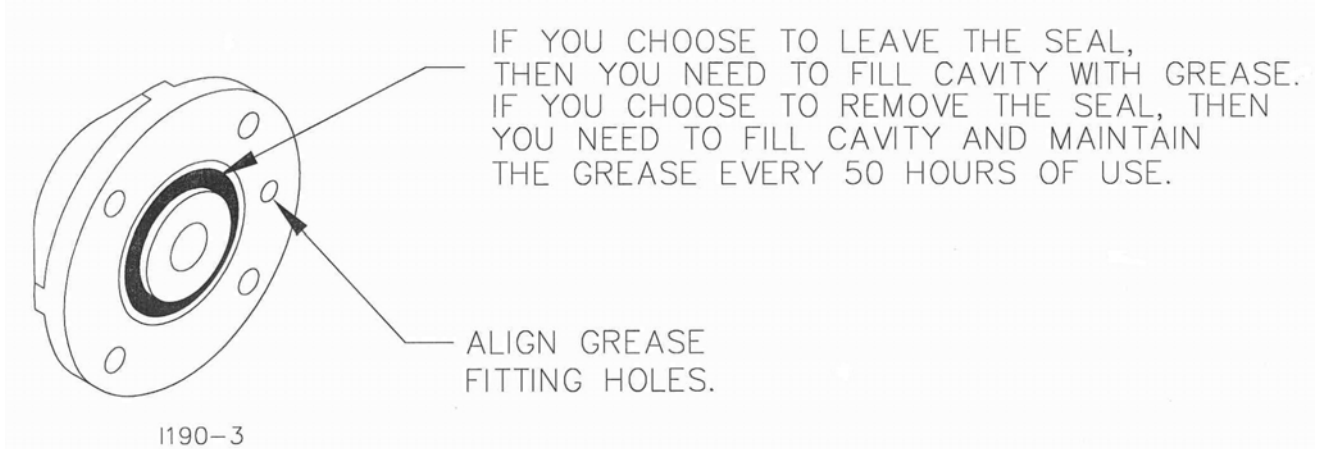
Understand and practice safe service procedures before doing work. Follow ALL the operating, maintenance and safety information in the equipment operator manual. Clear the area of bystanders, especially small children, when performing any maintenance or adjustments. Keep work area clean and dry. Use adequate lighting for the job. Use only tools, jacks and hoists of sufficient capacity for the job.

Never lubricate, service, or adjust machine while it is moving. Keep hands, feet, and clothing from power-driven moving and rotating parts. Disengage all power and operate controls to relieve pressure. Lower equipment to the ground and stop the engine. Remove the key. Wait for all moving parts to stop before servicing, adjusting, repairing or unplugging.

Securely support any machine elements with blocks or safety stands that must be raised for service work.

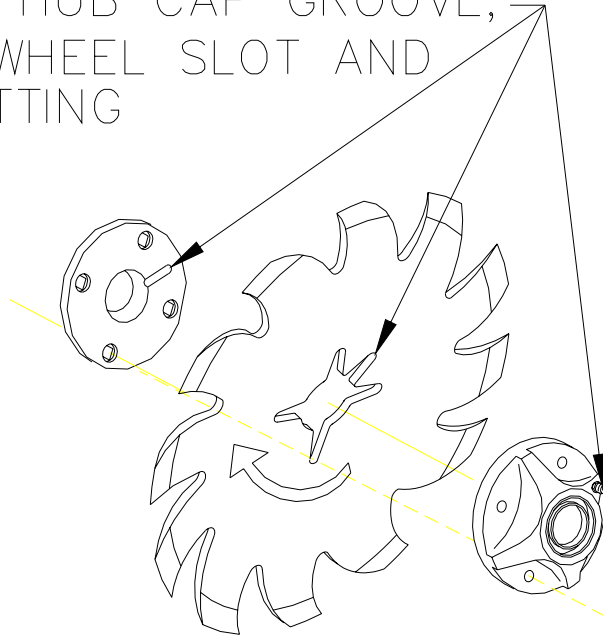
Keep all parts in good condition and properly installed. Fix damaged equipment immediately. Replace worn or broken parts. Remove any buildup of grease, oil, or debris. Make sure all guards are in place and properly secured when maintenance work is completed.

#### Assembly

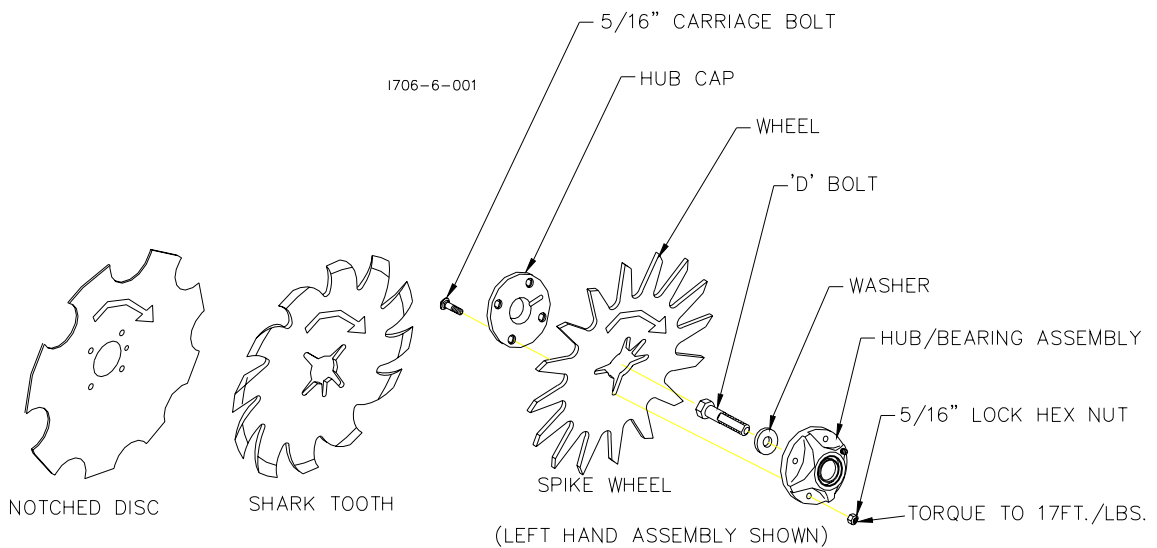


## MAINTENANCE

ALIGN THE HUB CAP GROOVE,  
WITH THE WHEEL SLOT AND  
GREASE FITTING

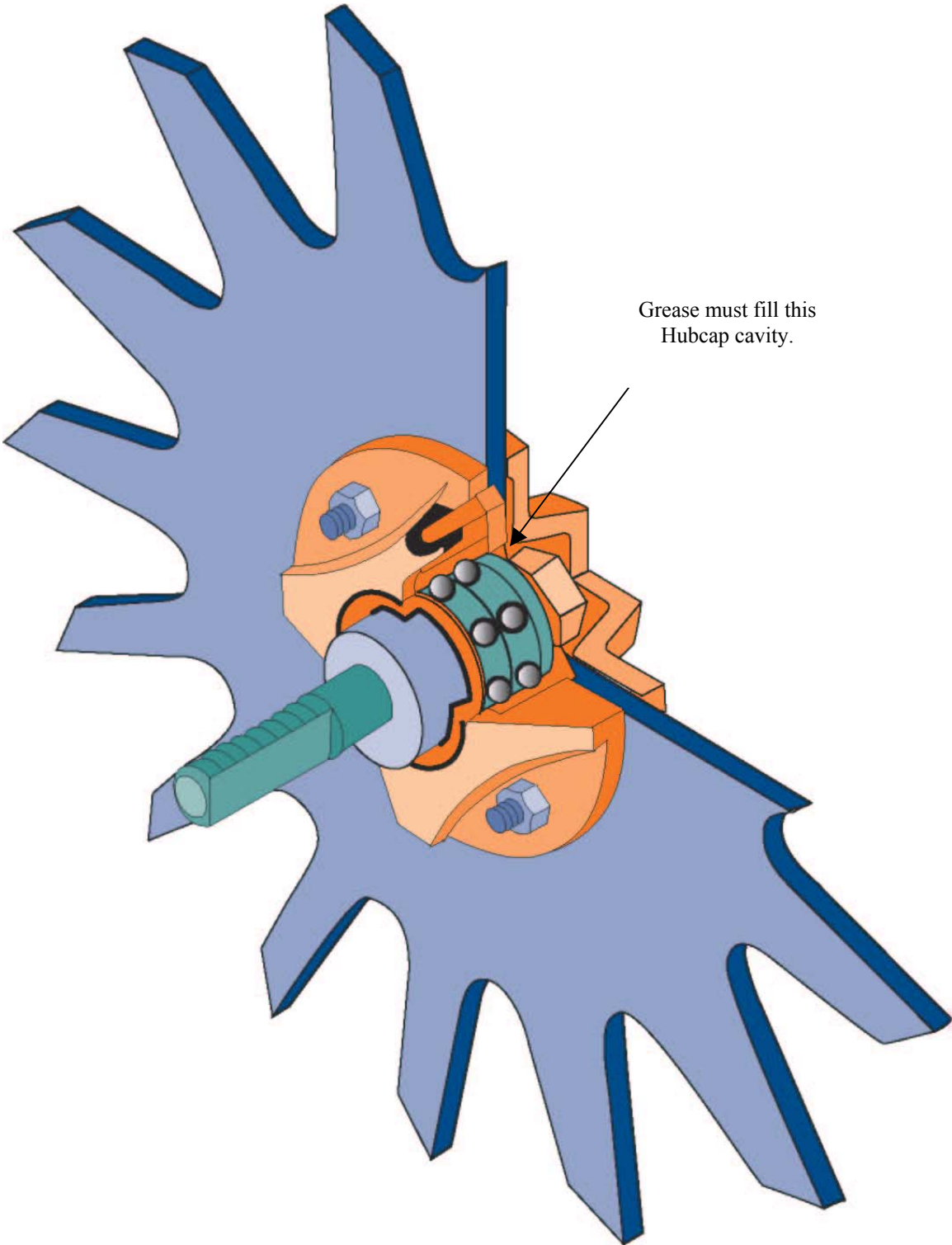


**NOTE:** Be certain to align the grease fitting with the slot in the wheel and the hubcap so that the grease can flow freely.



**IMPORTANT:** THE 2527-530 WASHER MUST BE INSTALLED OR THE WHEEL AND HUB ASSEMBLY WILL FALL OFF DURING USE.

# MAINTENANCE



## MAINTENANCE

### Lubrication



**CAUTION:** To help prevent serious injury or death to you or others caused by unexpected movement, service machine on a level surface. Lower machine to ground or sufficiently lock or block raised machine before servicing. If machine is connected to tractor, engage parking brake and place transmission in "PARK", shut off engine and remove key. If machine is detached from tractor, block wheels and use shop stands to prevent movement.



**CAUTION:** Do not clean, lubricate, or adjust machine while in motion.

Use grease based on NLGI consistency numbers and the expected air temperature range during the service interval.

Use a **multi-purpose lithium, water resistant, moderate speed, and NLGI grade #2** grease.

Other greases may be used if they meet the following **NLGI Performance Classification: GC-LB**

**IMPORTANT:** Some types of grease thickener are not compatible with others. Consult your grease supplier before mixing different types of grease.

#### Alternative Lubricants

Conditions in certain geographical areas may require special lubricants and lubrication practices which do not appear in the operator's manual. If there are any questions, consult Yetter Manufacturing Co. to obtain latest information and recommendation.

PART #	DESCRIPTION	OUNCES OF GREASE
2967-404	13" TAPER TOOTH R.M. WHEEL	1.12 OZ
2967-602	13" SHARK TOOTH R.M. WHEEL	1.12 OZ
2967-186	FLOATER WHEEL KIT W/R.M. WHEEL	2.08 OZ
2967-596	HEAVY DUTY OR BEVEL R.M. WHEEL W/ FLOATER WHEEL KIT	2.40 OZ

#### Storing Lubricants

Your machine can operate at top efficiency only if clean lubricants are used.

Use clean containers to handle all lubricants.

Store them in an area protected from dust, moisture and other contaminants.

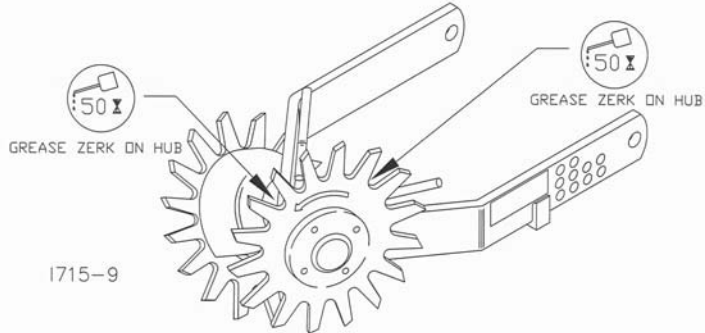
# MAINTENANCE

## Lubrication Symbols



Lubricate with grease at hourly interval indicated on symbol.

### Lubrication Intervals



**IMPORTANT: The recommended service intervals are based on normal conditions; severe or unusual conditions may require more frequent lubrication.**

Perform each lubrication and service procedure at the beginning and end of each season.

Clean grease fittings before using grease gun, to avoid injecting dirt and grit into the bearing. Replace any lost or broken fittings immediately. If a fitting fails to take grease, remove and clean thoroughly, replace fitting if necessary. Also check for failure of adjoining parts.

### BEARING REPLACEMENT INSTALLATION

1. If you wish to be able to grease the bearings in the hubs, remove the seal from one side of the bearings as illustrated before assembly. Otherwise the bearings may be left "sealed for life".
2. When assembling the spoke wheels, bearing assembly and hubcap, be sure to align the grease transfer hole in the spoke wheel with the groove in the hubcap and hole in the hub to allow grease passage.
3. Install/assemble the wheels, hubs and caps. **IMPORTANT: THE 2527-530 WASHER MUST BE INSTALLED OR THE WHEEL AND HUB ASSEMBLY WILL FALL OFF DURING USE.**
4. Grease the wheel/hub/bearing assembly.



# MAINTENANCE

## Storing the Equipment

Store the machine in an area away from human activity

Store machine in RAISED position.

Install service locks on all wheel cylinders.

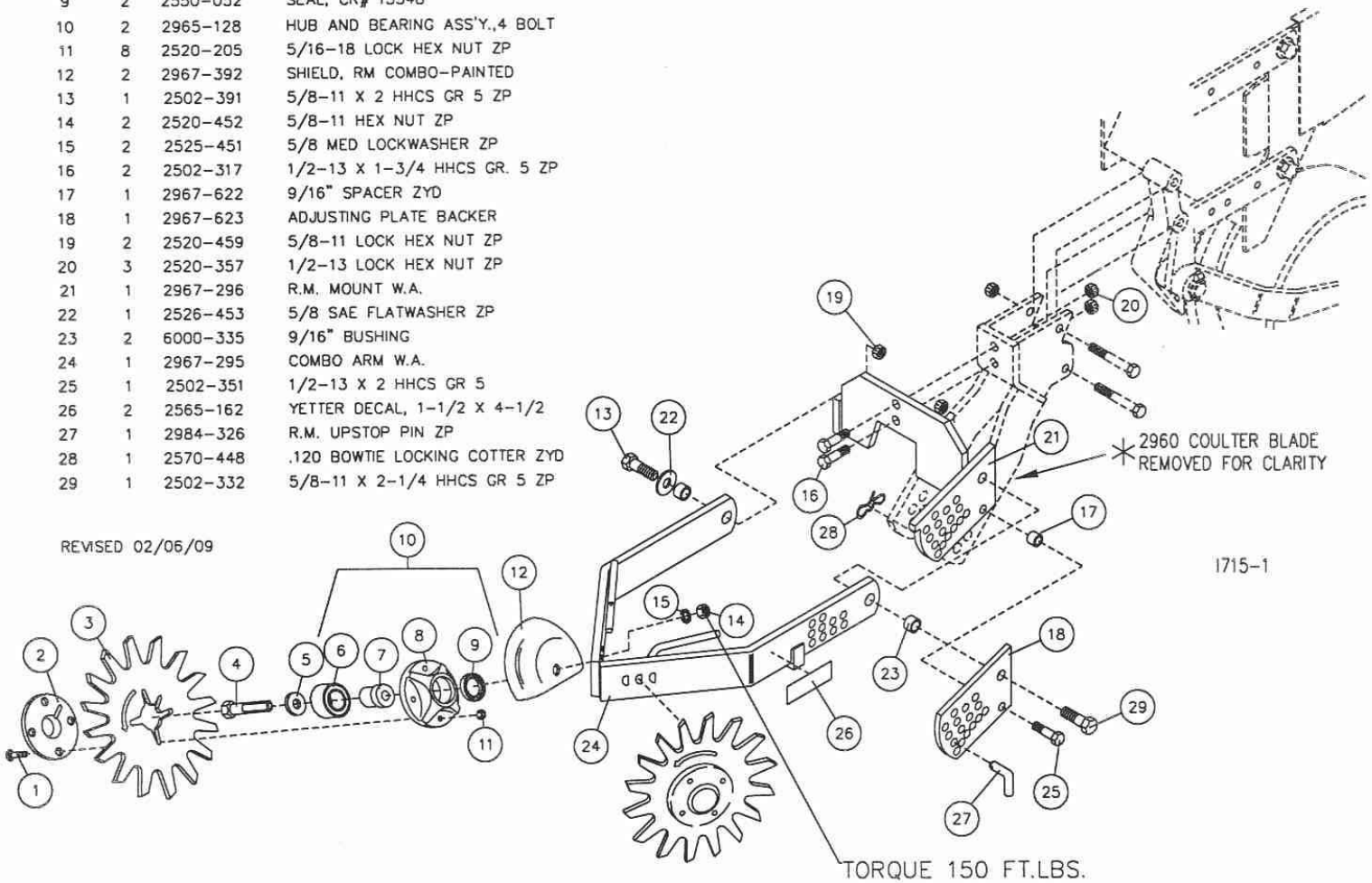
At the end of the season, the machine should be thoroughly inspected and prepared for storage. Repair or replace any worn or damaged components to prevent down time at the start of the next season. Store machine under cover with all parts in operating condition.

- Clean machine thoroughly to remove all dirt, debris and crop residue, which would hold moisture and cause rusting.
- Inspect machine for worn or broken parts. See your Yetter Farm Equipment dealer during the off-season so that parts or service can be acquired when machine is not needed in the field.
- Lubricate bearings as outlined in the Lubrication section
- Paint all parts which are chipped or worn and require repainting.
- Store machine in a clean, dry place with the planting unit out of the sun.
- If the machine cannot be stored inside, cover with a waterproof tarpaulin and tie securely in place.
- Do not allow children to play on or around the machine

# PARTS IDENTIFICATION

## 2967-023 - CASE TITAN WITH COULTER

DET	QTY	PART NO.	DESCRIPTION
1	8	2505-208	5/16-18 X 1 1/2 CAR BLT GR5
2	2	2965-352	HUB CAP CASTING, 4 BOLT, BLACK
3	2	2967-404	13" TAPER TOOTH SPOKE WHEEL
	2	2967-596	3/8" TAPER TOOTH SPOKE WHEEL
	2	2967-602	13" SHARK TOOTH WHEEL
4	2	2570-740	5/8-11 X 3" 'D' BOLT GR.5 Z
5	2	2527-530	1.50D X 21/32ID 3/16TK MA B
6	2	2570-594	BEARING, 2 ROW NTN# DF0654L
7	2	2570-715	BEARING INSERT, TRASHMASTER
8	2	2965-351	HUB CAST.,MACHINED, 4 BOLT
9	2	2550-052	SEAL, CR# 13548
10	2	2965-128	HUB AND BEARING ASS'Y.,4 BOLT
11	8	2520-205	5/16-18 LOCK HEX NUT ZP
12	2	2967-392	SHIELD, RM COMBO-PAINTED
13	1	2502-391	5/8-11 X 2 HHCS GR 5 ZP
14	2	2520-452	5/8-11 HEX NUT ZP
15	2	2525-451	5/8 MED LOCKWASHER ZP
16	2	2502-317	1/2-13 X 1-3/4 HHCS GR. 5 ZP
17	1	2967-622	9/16" SPACER ZYD
18	1	2967-623	ADJUSTING PLATE BACKER
19	2	2520-459	5/8-11 LOCK HEX NUT ZP
20	3	2520-357	1/2-13 LOCK HEX NUT ZP
21	1	2967-296	R.M. MOUNT W.A.
22	1	2526-453	5/8 SAE FLATWASHER ZP
23	2	6000-335	9/16" BUSHING
24	1	2967-295	COMBO ARM W.A.
25	1	2502-351	1/2-13 X 2 HHCS GR 5
26	2	2565-162	YETTER DECAL, 1-1/2 X 4-1/2
27	1	2984-326	R.M. UPSTOP PIN ZP
28	1	2570-448	.120 BOWTIE LOCKING COTTER ZYD
29	1	2502-332	5/8-11 X 2-1/4 HHCS GR 5 ZP

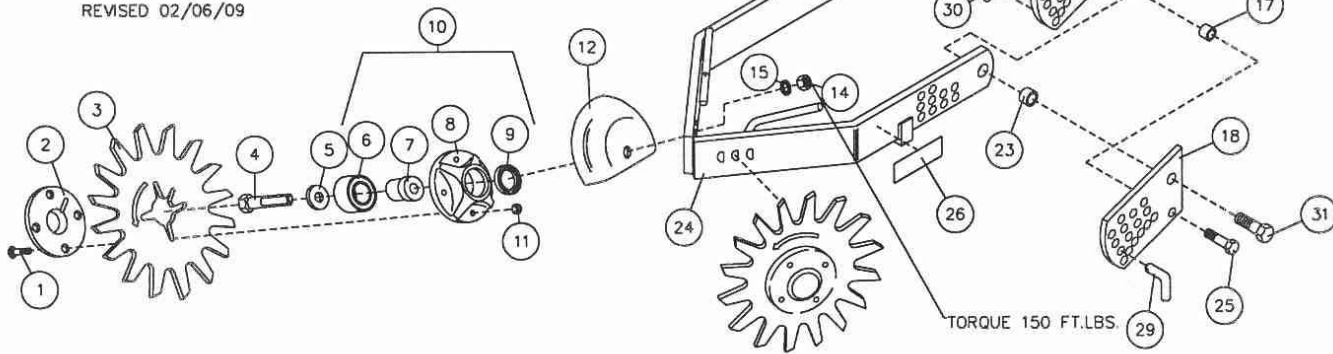


# PARTS IDENTIFICATION

## 2967-024 - CASE TITAN LESS COULTER

DET	QTY	PART NO.	DESCRIPTION
1	8	2505-208	5/16-18 X 1 1/2 CAR BLT GR5
2	2	2965-352	HUB CAP CASTING, 4 BOLT, BLACK
3	2	2967-404	13" TAPER TOOTH SPOKE WHEEL
	2	2967-596	3/8" TAPER TOOTH SPOKE WHEEL
	2	2967-602	13" SHARK TOOTH WHEEL
4	2	2570-740	5/8-11 X 3" 'D' BOLT GR.5 Z
5	2	2527-530	1.50D X 21/32ID 3/16TK MA B
6	2	2570-594	BEARING, 2 ROW NTN# DF0654L
7	2	2570-715	BEARING INSERT, TRASHMASTER
8	2	2965-351	HUB CAST, MACHINED, 4 BOLT
9	2	2550-052	SEAL, CR# 13548
10	2	2965-128	HUB AND BEARING ASS'Y., 4 BOLT
11	8	2520-205	5/16-18 LOCK HEX NUT ZP
12	2	2967-392	SHIELD, RM COMBO-PAINTED
13	1	2502-391	5/8-11 X 2 HHCS GR 5 ZP
14	2	2520-452	5/8-11 HEX NUT ZP
15	2	2525-451	5/8 MED LOCKWASHER ZP
16	2	2502-317	1/2-13 X 1-3/4 HHCS GR. 5 ZP
17	1	2967-622	9/16" SPACER ZYD
18	1	2967-623	ADJUSTING PLATE BACKER
19	2	2520-459	5/8-11 LOCK HEX NUT ZP
20	5	2520-357	1/2-13 LOCK HEX NUT ZP
21	1	2967-296	R.M. MOUNT W.A.
22	1	2526-453	5/8 SAE FLATWASHER ZP
23	2	6000-335	9/16" BUSHING
24	1	2967-295	COMBO ARM W.A.
25	1	2502-351	1/2-13 X 2 HHCS GR 5
26	2	2565-162	YETTER DECAL, 1-1/2 X 4-1/2
27	1	2967-297	CYCLO UNIT R.M. BRACKET W.A.
28	2	2502-365	1/2-13 X 3-3/4 HHCS GR 5 ZP
29	1	2984-326	R.M. UPSTOP PIN ZP
30	1	2570-448	.120 BOWTIE LOCKING COTTER ZYD
31	1	2502-332	5/8-11 X 2-1/4 HHCS GR 5 ZP

REVISED 02/06/09



# Our name Is getting known

Just a few years ago, Yetter products were sold primarily to the Midwest only. Then we embarked on a program of expansion and moved into the East, the South, the West and now north into Canada. We're even getting orders from as far away as Australia and Africa.

So, when you buy Yetter products . . .you're buying a name that's recognized. A name that's known and respected. A name that's become a part of American agriculture and has become synonymous with quality and satisfaction in the field of conservation tillage.

Thank you.

**YETTER MANUFACTURING CO.**  
Colchester, IL 62326-0358 • 309/776-4111  
Toll Free 800/447-5777  
Fax 309/776-3222  
Website: [WWW.YETTERCO.COM](http://WWW.YETTERCO.COM)  
E-MAIL: [INFO@YETTERCO.COM](mailto:INFO@YETTERCO.COM)

2565-695\_REV\_A • 03/09