



**1300 SERIES
BULK SEED HANDLING EQUIPMENT
PARTS & SET-UP MANUAL**

2565-463_REV_C 09/2012

YETTER MANUFACTURING CO.
FOUNDED 1930

Colchester, IL 62326-0358
Toll free: 800/447-5777
309/776-3222 (Fax)
Website: www.yetterco.com
E-mail: info@yetterco.com

Yetter

FOREWORD

You've just joined an exclusive but rapidly growing club.

For our part, we want to welcome you to the group and thank you for buying a Yetter product.

We hope your new Yetter products will help you achieve both goals-increase your productivity and increase your efficiency so that you may generate more profit.

This operator's manual has been designed into four major sections: Foreword, Safety Precautions, Installation Instructions and Parts Breakdown.



This **SAFETY ALERT SYMBOL** indicates important safety messages in the manual. When you see this symbol, be alert to the possibility of **PERSONAL INJURY** and carefully read the message that follows.

The word **NOTE** is used to convey information that is out of context with the manual text. It contains special information such as specifications, techniques and reference information of a supplementary nature.

The word **IMPORTANT** is used in the text when immediate damage will occur to the machine due

to improper technique or operation. Important will apply to the same information as specified by note only of an immediate and urgent nature.

It is the responsibility of the user to read the operator's manual and comply with the safe and correct operating procedure and to lubricate and maintain the product according to the maintenance schedule in the operator's manual.

The user is responsible for inspecting his machine and for having parts repaired or replaced when continued use of the product would cause damage or excessive wear to the other parts.

It is the user's responsibility to deliver his machine to the Yetter dealer who sold him the product for service or replacement of defective parts, which are covered by the warranty policy.

If you are unable to understand or follow the instructions provided in this publication, consult your local Yetter dealer or contact:

YETTER MANUFACTURING CO.

309/776-4111

800/447-5777

309/776-3222 (FAX)

Website: www.yetterco.com

E-mail: info@yetterco.com

WARRANTY

Yetter Manufacturing warrants all products manufactured and sold by it against defects in material. This warranty being expressly limited to replacement at the factory of such parts or products as shall appear to be defective after inspection. This warranty does not obligate the Company to bear cost of labor in replacement of parts. It is the policy of the Company to make improvements without incurring obligations to add them to any unit already sold. No warranty is made or authorized to be made, other than herein set forth. This warranty is in effect for one year after purchase.

Dealer _____

Yetter Manufacturing warrants its own products only and cannot be responsible for damages to equipment on which mounted.

SAFETY PRECAUTIONS

You can make your farm a safer place to live and work if you observe the safety precautions given. Study these precautions carefully and insist those working with you and for you follow the precautions.

Finally, remember this an accident is usually caused by someone's carelessness, neglect or oversight.

A brief description of signal words that may be used in this manual:

CAUTION: Used as a general reminder of good safety practices or to direct attention to unsafe practices.

WARNING: Denotes a specific potential hazard.

DANGER: Denotes the most serious specific potential hazard.



CAUTION

Consult your implement and tractor operator's manual for correct and safe operating practices. Be aware of towed implement width and allow safe clearance.



CAUTION: SAFETY SIGNS

Safety decals are placed on the implement to alert the operator and others to the risk of personal injury or unsafe operation during normal operations and servicing.

1. The safety decals must be kept clean and in good condition to ensure that they are legible.
2. Safety decals must be replaced if they are missing or illegible.
3. When components are replaced during repair or servicing, check that the new components include the necessary safety signs.
4. Replacement safety decals may be obtained from your local dealer.



WARNING

Read these instructions carefully to acquaint yourself with the Seed Handling Equipment. Working with unfamiliar equipment can lead to accidents.

Safety shields must always be in place during operation.

Never park the equipment on a steep incline or leave the equipment running unattended.

Never clean, lubricate or adjust a machine that is in motion. Always remove spark plug wire before performing service. Always replace safety shields after servicing.

Always check that straps are secure.

Be sure trolley is pinned and the chute is down in transport.

Make sure latches are in pinned position when moving equipment.

Do not allow children to operate this equipment.

Do not allow riders on the equipment, trailer and/or pick-up.

Use speed and caution dictated by the terrain being traversed. Do not operate on any slope steep enough to cause tipping or loss of control.

Be sure all personnel are clear of the immediate area before operating.

Read and understand the operator's manual and require all other persons who will operate the equipment to do the same.

If operating on public roadways, where legal, be certain all lighting is operating properly and observe all traffic laws.

Beware of increased stopping distances and control effort when operating with implements attached.

Be familiar with all controls and be prepared to stop engine and equipment quickly in an emergency.

If seed or seed treatment is dusty or dirty, wear full-face respirator.

FAILURE TO HEED MAY RESULT IN PERSONAL INJURY OR DEATH.

TABLE OF CONTENTS

	PAGE
FORWARD/WARRANTY.....	2
SAFETY INFORMATION.....	3
TABLE OF CONTENTS.....	4
GENERAL INFORMATION/BOLT TORQUE.....	5
ASSEMBLY INSTRUCTIONS	
1300-183 – POWER UNIT.....	6
1300-132 – FRAME – SEED TRAIN.....	7-8
1300-133 – TROLLEY/AIRLOCK/SEED CHUTE.....	9-15
1300-131 - FRAME CONVECTION KIT – SEED TRAIN.....	16-18
1300-156 - SEED HOSE/POWER CABLE.....	14-15
1300-413 - WIRELESS REMOTE/RECEIVER SJ II.....	19
OPERATING INSTRUCTIONS.....	20
MAINTENANCE	
USE/PREPARATION.....	21
STORAGE.....	21
PART IDENTIFICATION	
1300-183.....	22-29
1300-132.....	30
1300-133.....	31
1300-131.....	32
1300-156.....	33
1300-150.....	34
1300-146.....	35
7100-101.....	36
7100-112.....	37
7100-102.....	38
1300-144.....	39
1300-166.....	40
1300-161.....	41
1300-159.....	42-43
1300-151.....	44
1300-119.....	45
1300-130.....	46
1300-147.....	47
1300-157.....	48
1300-160/165.....	49
POWER UNIT WIRING DIAGRAM.....	50
TROUBLESHOOTING.....	51

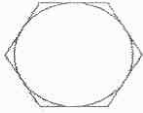
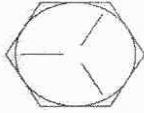

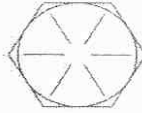
GENERAL INFORMATION

BOLT TORQUE

READ THESE INSTRUCTIONS FIRST:

1. Improperly tightened bolts will result in damage, breakage, expense, and down time.
2. Always replace bolts with the specified grade and type.
3. Torque properly before first use of the machine and every 2-4 hours of use until you are sure bolts are staying tight.
4. The chart below is a guide for proper torque. Use it unless a specified torque is called out elsewhere in the manual.
5. Torque is the force you apply to the wrench handle or the cheater bar, times the length of the handle or bar.
6. Use a torque wrench whenever possible.

The following table shows torque in ft. lbs.

BOLT DIA. AND THREADS PER INCH	 GRADE 2	 OR  GRADE 5 A-325	 GRADE 8
1/4	6	10	14
5/16	12	20	30
3/8 - 16	25	35	50
7/16 - 14	35	55	80
1/2 - 13	55	85	125
9/16 - 12	75	125	175
5/8 - 11	105	170	235
3/4 - 10	185	305	425
7/8 - 9	170	445	690
1-8	260	670	1030
1 1/8 - 7	365	900	1460
1 1/4 - 7	515	1275	2060
1 3/8 - 6	675	1675	2700
1 1/2 - 6	900	2150	3500
1 3/4 - 5	1410	3500	5600

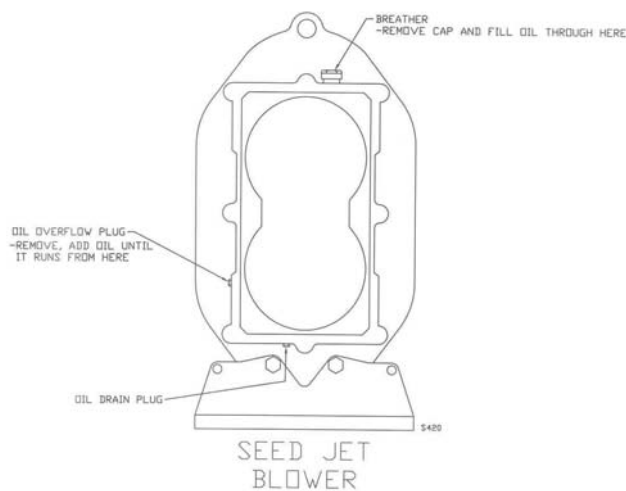
Lubricate all bearings and moving parts as assembled and make certain that they work freely.

GENERAL INFORMATION

POWER UNIT SET UP

NOTE: Gasoline, oil and a 12-Volt battery (Group 58 or 26-70) will be required before the unit can be operated.

DO NOT START ENGINE OR USE BLOWER BEFORE FILLING WITH PROPER LUBRICANTS. ENGINE HAS AN OIL LEVEL SENSOR; OIL LEVEL MUST BE FULL ON DIPSTICK. DO NOT OVERFILL!!



POWER UNIT SET UP

1. Add oil to blower gear case. **DO NOT OVERFILL.** 8 oz., 80W-140 gear oil (ISO220, 5EP, GL-5 service grade). Lubricate the bearings using Shell Darina EP NLG grade 2 grease.
2. Fill crankcase of engine with oil. (High quality SAE 30 weight, SE, SF or SG service grade)
3. Fill gasoline tank with clean, fresh lead free gasoline (85 octane).

NOTE: Engine Manufacturer does not recommend the use of gasoline, which contains alcohol such as gasohol. If gasoline with alcohol is used, it must not contain more than 10% Ethanol and MUST be removed from the engine during storage. DO NOT use gasoline-containing methanol.

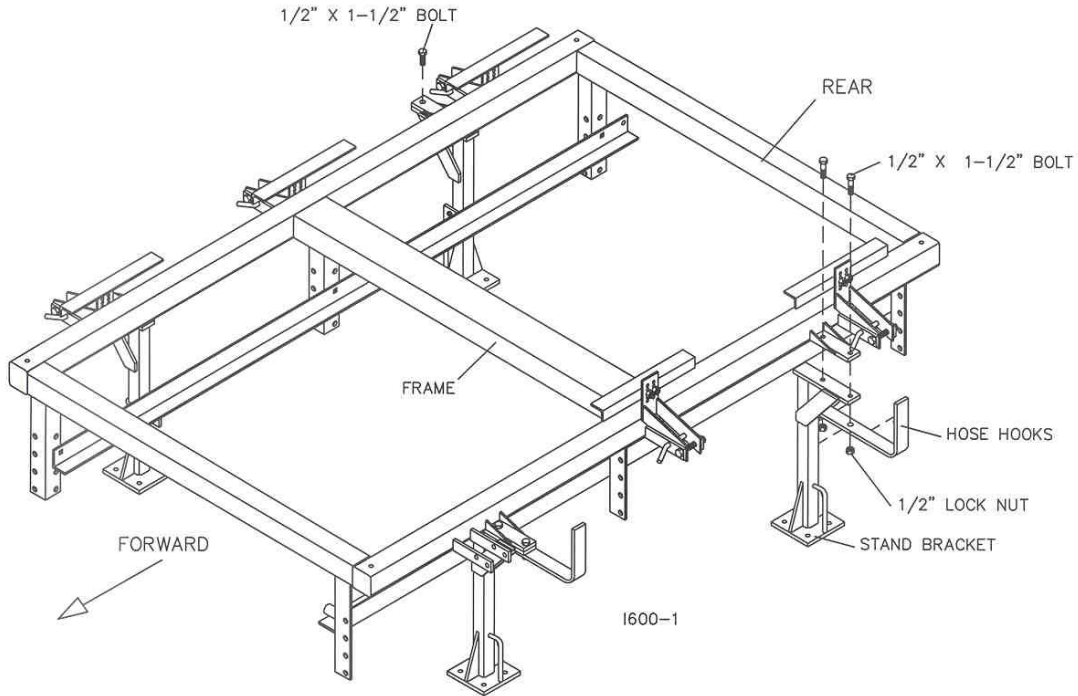
4. Install and clamp securely a 12-volt battery, Group 58 or 26-70.
5. Check that all electrical connections are tight.
6. Check tension of drive belt.
7. Ensure that all safety shields are in place.

NOTE: For questions concerning warranty on the engine or blower contact the corresponding manufacturer or the local service/retail outlet.

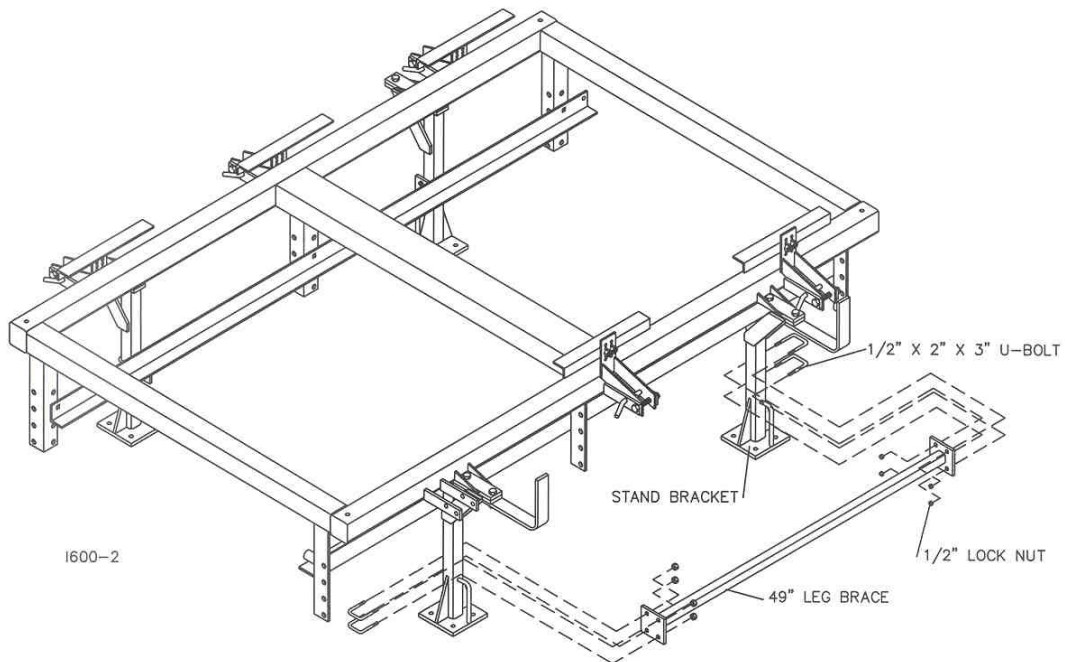
ASSEMBLY INSTRUCTIONS

1300-132 SEED TRAIN FRAME ASSEMBLY

Step 1. Attach the 4) 1300-249 stands and 2) 1300-478 hose hooks to the 1300-225 frame. Fasten two stands to the frame using $\frac{1}{2}$ " x $1\frac{1}{2}$ " bolts and lock nuts. Fasten the other two stands and hose hooks using the $\frac{1}{2}$ " x 2" bolts and lock nuts. Do not fully tighten the bolts.



Step 2. Attach the 2) 1300-229 leg brace to the 1300-249 stand bracket using 8) $\frac{1}{2}$ " x 2" x 3" u-bolts and $\frac{1}{2}$ " lock nuts.

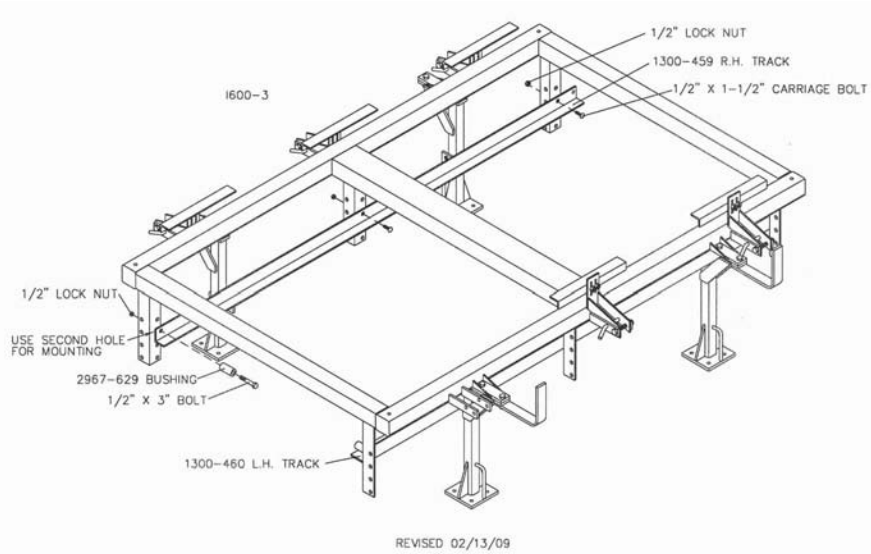


Step 3. Tighten all bolts in steps 1 and 2 to the proper torque ratings of 85 ft. lbs.

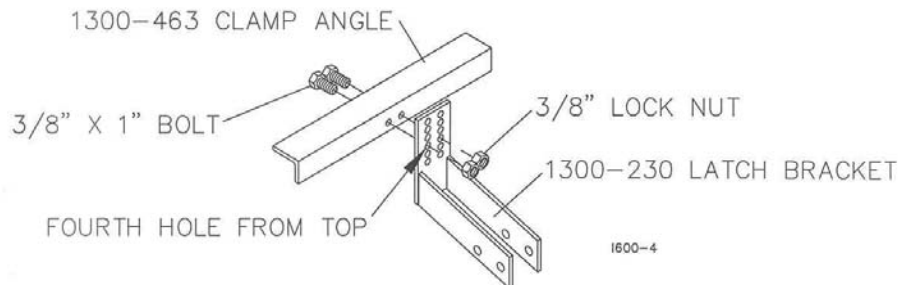
ASSEMBLY INSTRUCTIONS

SEED TRAIN FRAME (CONT.)

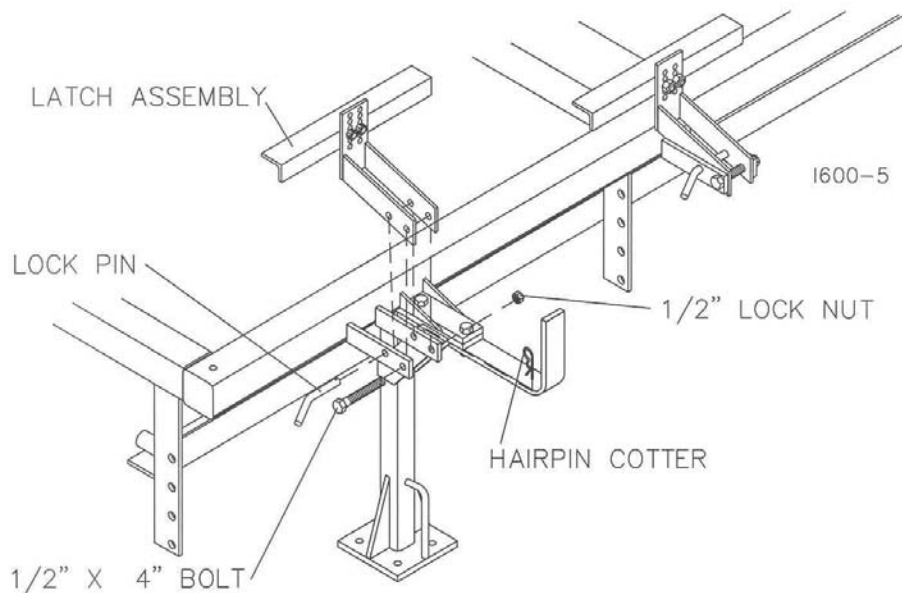
Step 4. Remove the roller tracks from shipping position and attach the 1300-459 right hand roller track and 1300-460 left hand roller track to the frame in the second hole from the top using 4) 1/2" x 1 1/2" carriage bolts, 2) 1/2" x 3" bolts 2) 1300-493 2" bushings and 1/2" lock nuts.



Step 5. Attach the 6) clamp angles (1300-463) to the 6) latch brackets (1300-230) in the fourth hole from the top using 2) 3/8" x 1" bolts and lock nuts.



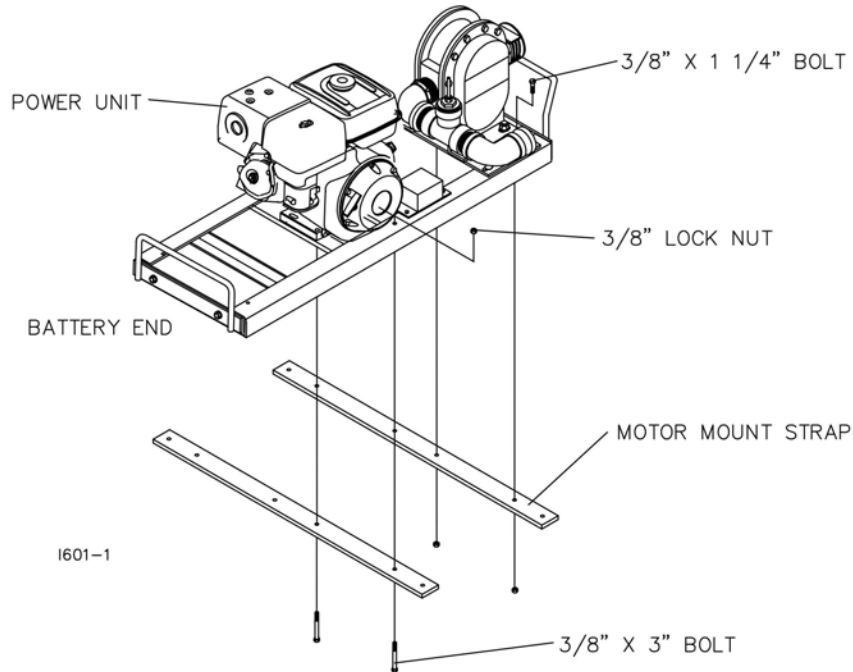
Step 6. Attach the 6) latch assemblies to the frame using 1/2" x 4" bolts, lock nuts, lock pin and hairpin cotter.



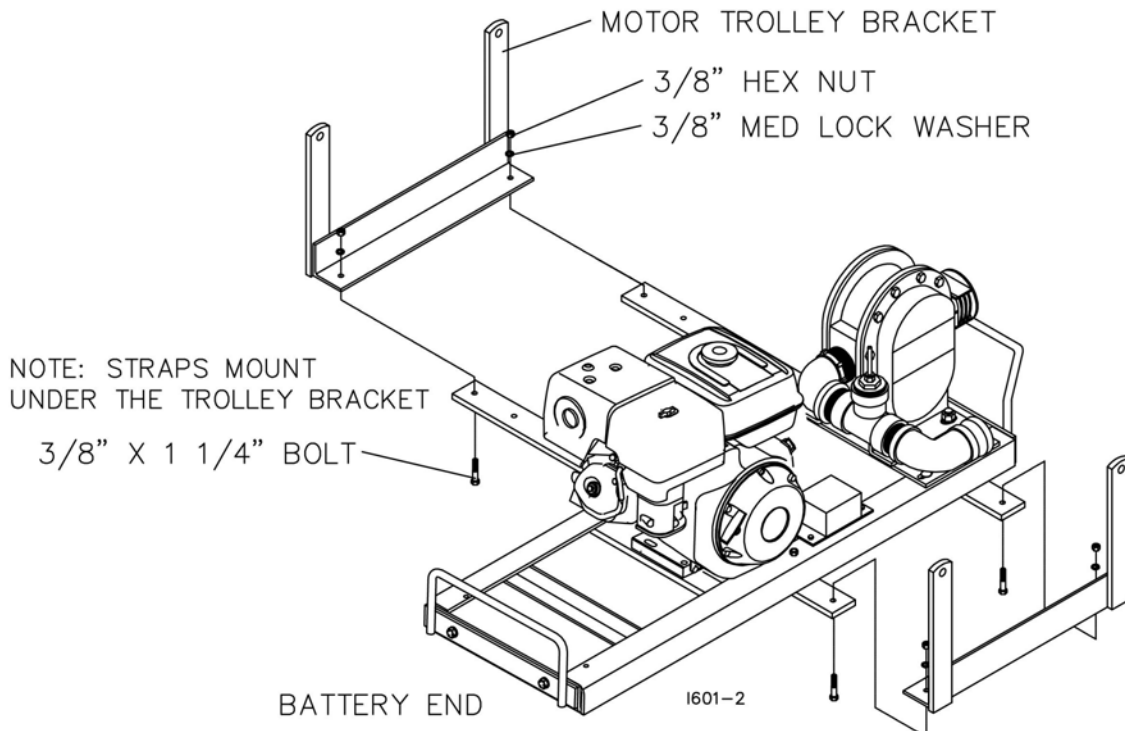
ASSEMBLY INSTRUCTIONS

SEED TRAIN TROLLEY 1300-133

Step 1. Elevate the power unit and attach the 2) 1300-573 motor mount strap to the power unit using 2) 3/8" x 3" bolts, 2) 3/8" x 1 1/4" bolts and 3/8" lock nuts.



Step 2. Attach the 2) 1300-236 motor trolley brackets to the motor mounts using 4) 3/8" x 1 1/4" bolts, lock washers and hex nuts.

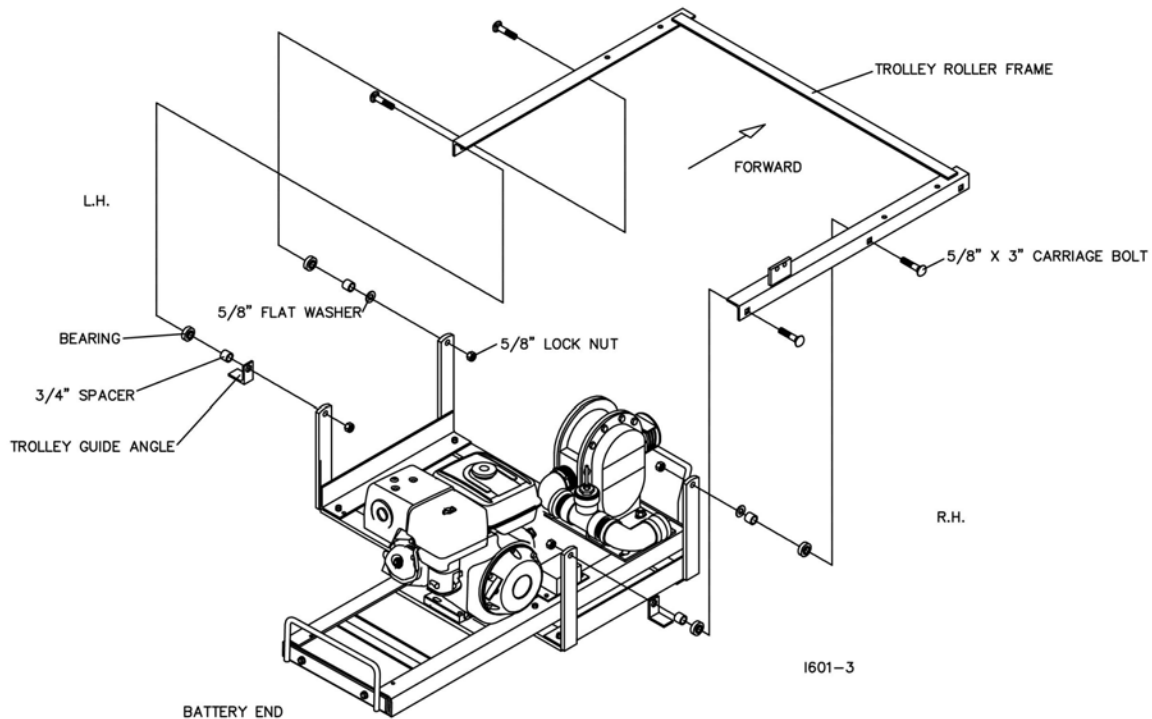


ASSEMBLY INSTRUCTIONS

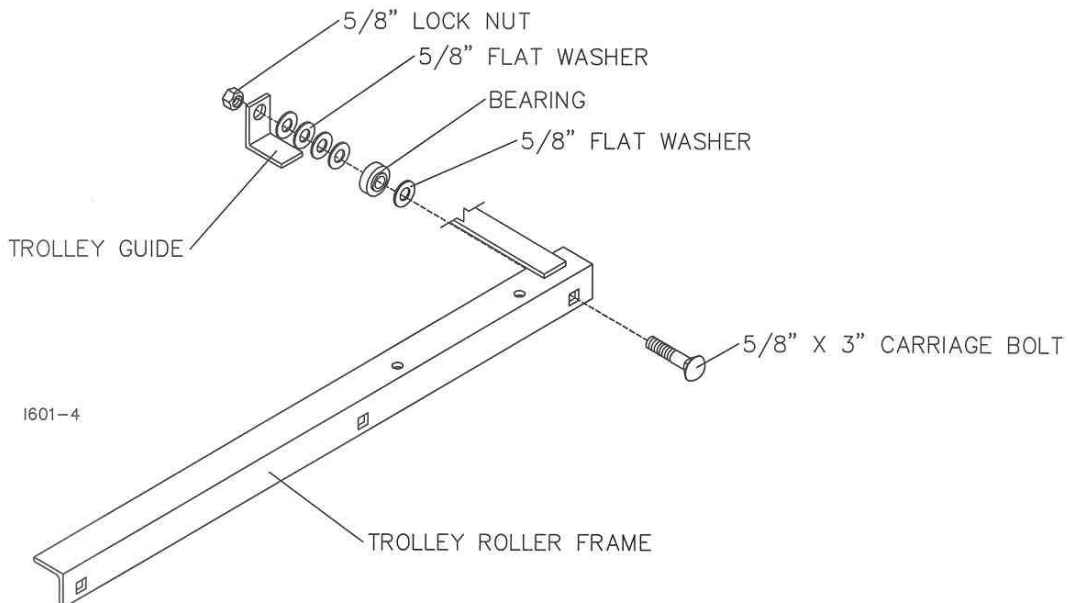
SEED TRAIN TROLLEY 1300-133 (CONT.)

Step 3. Attach the 1300-235 trolley roller frame to the motor trolley bracket using 4) 5/8" x 3" carriage bolts, bearing, 3/4" spacers, 2) 5/8" flat washers, 2) 1300-487 trolley guides and lock nuts.

NOTE: DO NOT OVER-TIGHTEN THE 5/8" LOCK NUT, THE BEARING MUST TURN FREELY.



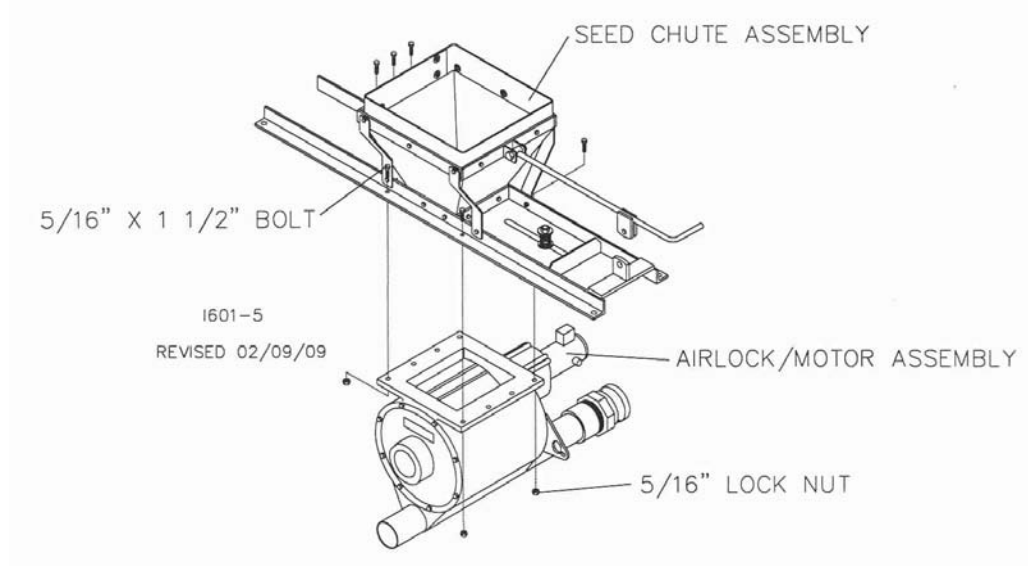
Step 4. Attach the 2) 5/8" X 3" carriage bolts, 2) bearings, 5/8" flat washers, 2) 1300-487 trolley guides and 5/8" lock nuts to the front holes of the 1300-235 trolley roller frame. Note: Use the 5/8" flat washers as needed to space the bearing and the trolley guide. The trolley roller frame needs to roll smoothly back and forth on the track.



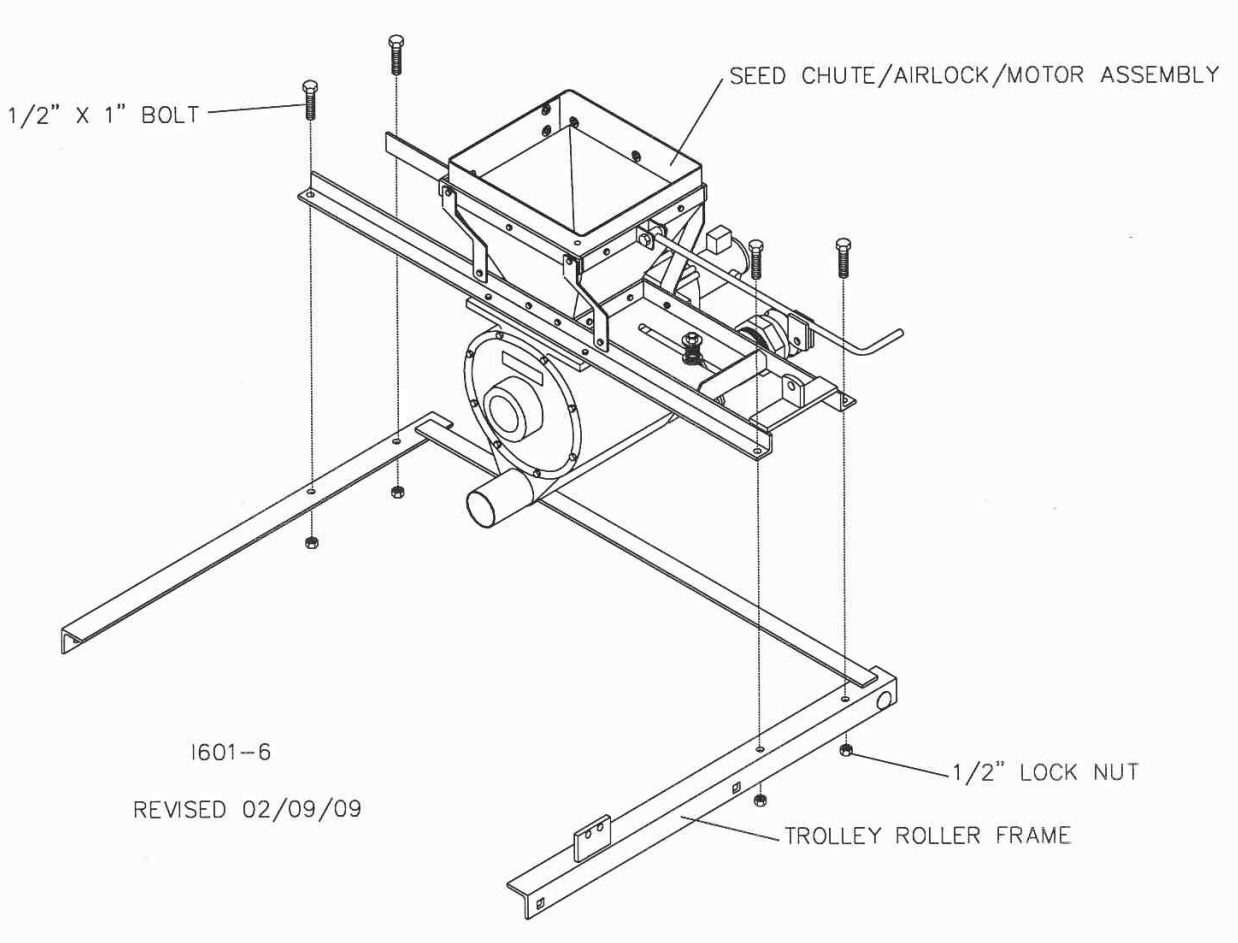
ASSEMBLY INSTRUCTIONS

SEED TRAIN TROLLEY 1300-133 (CONT.)

Step 5. Attach the Airlock/Motor assembly to the seed chute assembly using 8) 5/16" x 1 1/2" bolts, 5/16" flat washers and 5/16" lock nuts.



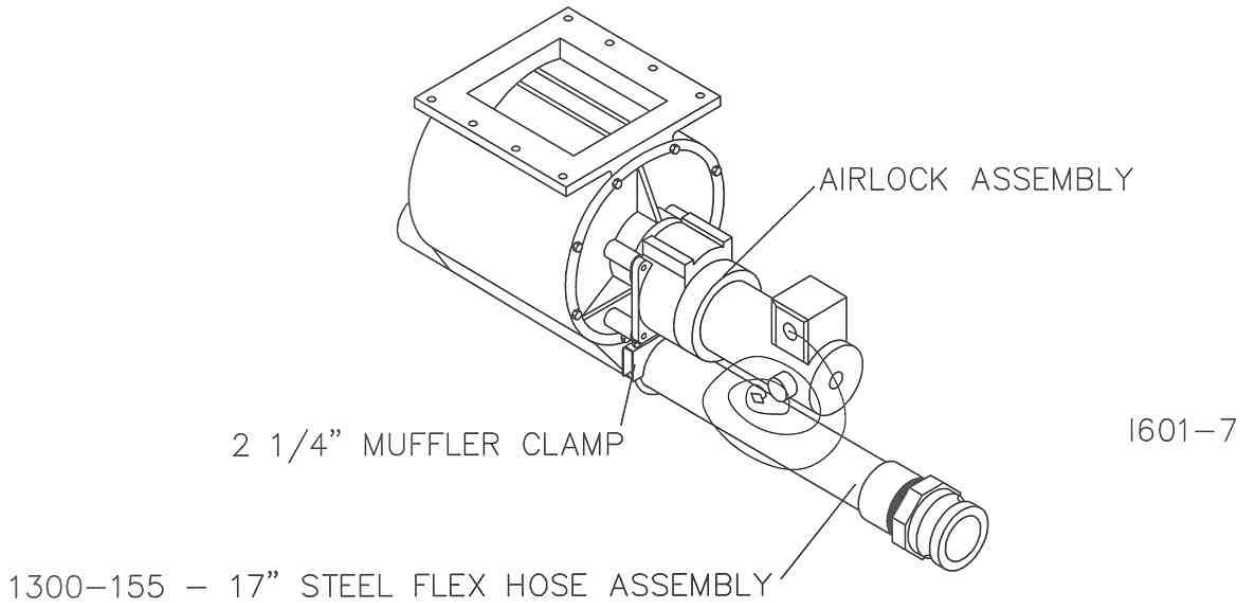
Step 6. Attach the Seed Chute/Airlock/Motor assembly to the 1300-235 trolley roller frame using 4) 1/2" x 1" bolts and 1/2" lock nuts.



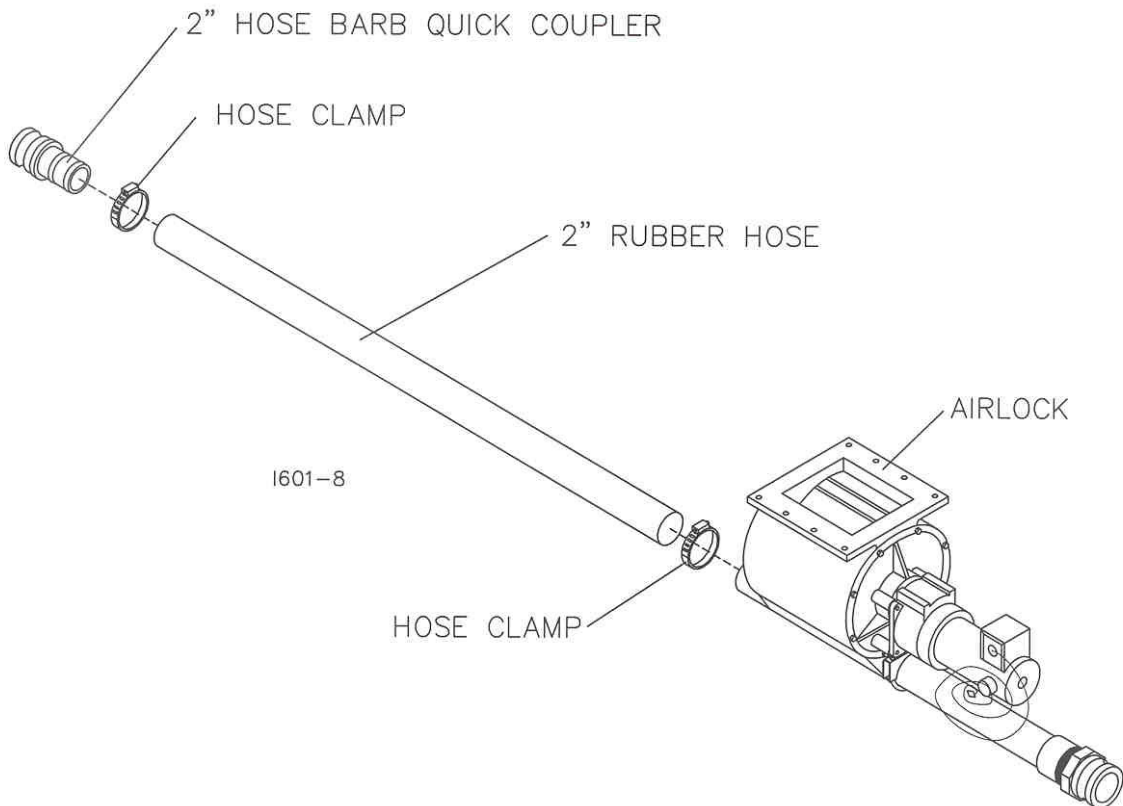
ASSEMBLY INSTRUCTIONS

SEED TRAIN TROLLEY 1300-133 (CONT.)

Step 7. Attach the 1300-155 17" steel flex hose assembly to the airlock at the 2 1/4" steel pipe and secure it with the 2 1/4" muffler clamp. Do Not Over Tighten the clamp, to avoid damaging the steel flex hose.



Step 8. Assemble the 2" rubber hose, 2" hose barb quick coupler and a hose clamp. HINT: to aid in the assembly, it is recommended that the hose barb end of the quick coupler can be lubricated with a non-oil based product. Example: dish soap. Then slide a hose clamp on the other end of the 2" rubber hose and install onto the airlock at the 2" steel pipe nipple.

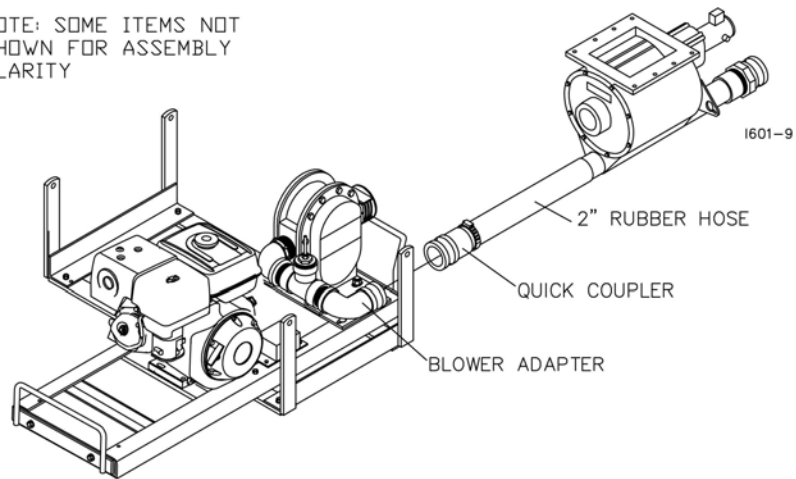


ASSEMBLY INSTRUCTIONS

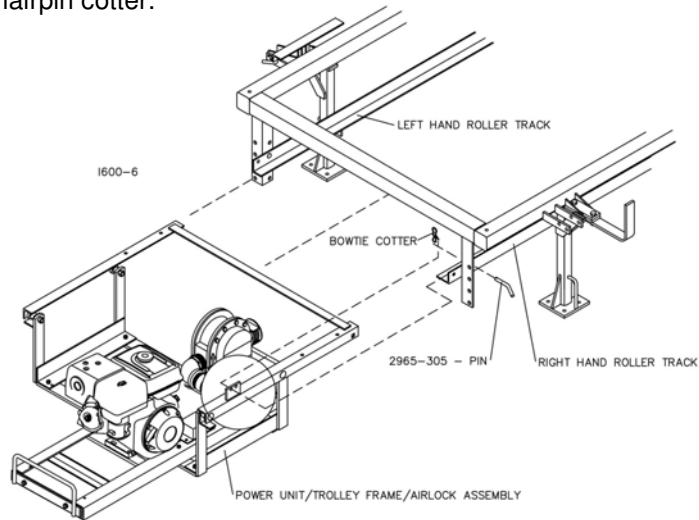
SEED TRAIN TROLLEY 1300-133 (CONT.)

Step 9. Connect the 2" rubber hose quick coupler to the blower on the power unit. Next, use a 2515-552 plastic cable tie to support the 2" rubber hose so that it does not drag or bind when the trolley is rolled on the track.

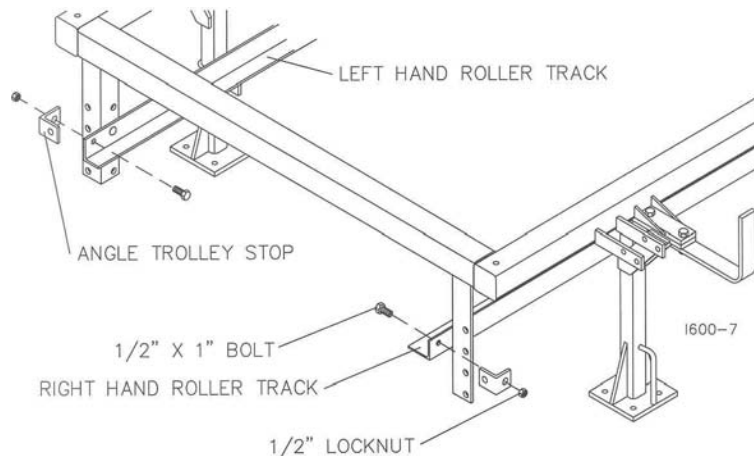
NOTE: SOME ITEMS NOT SHOWN FOR ASSEMBLY CLARITY



Step 10. Next, set the power unit/trolley frame/airlock assembly onto the roller tracks and secure in place with 2965-305 pins and hairpin cotter.



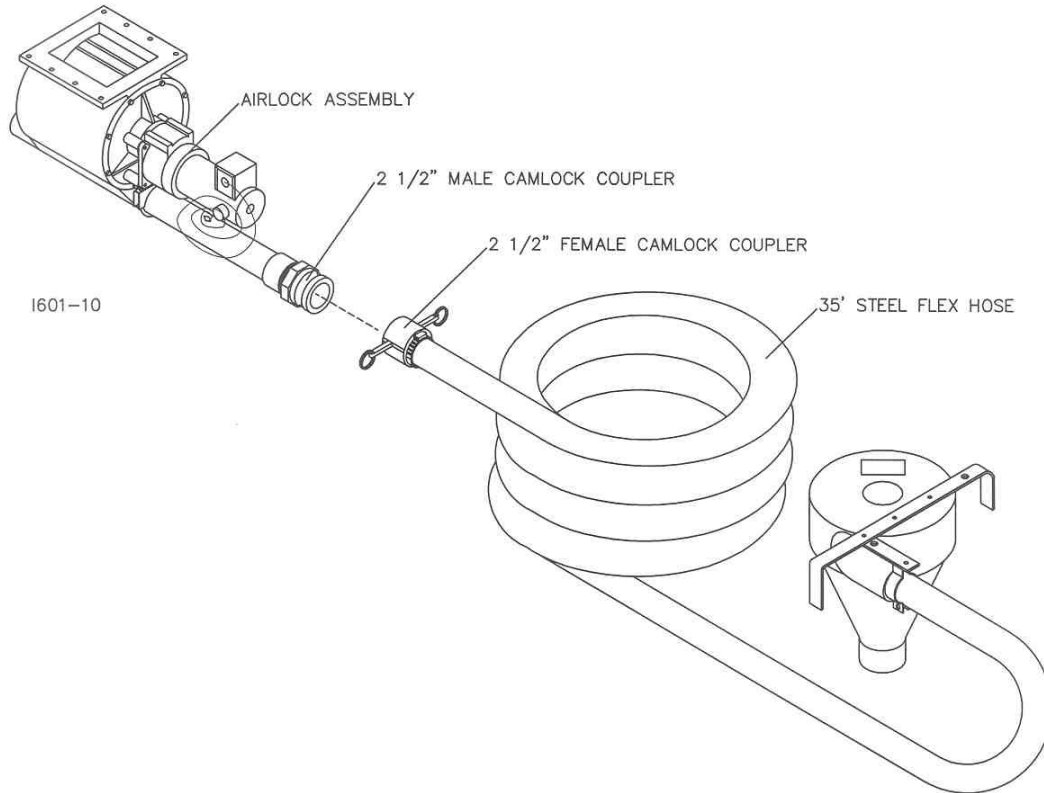
Step 11. Attach the 2) angle trolley stops to the R.H. and L.H. roller tracks using 2) 1/2" x 1" bolts and lock nuts.



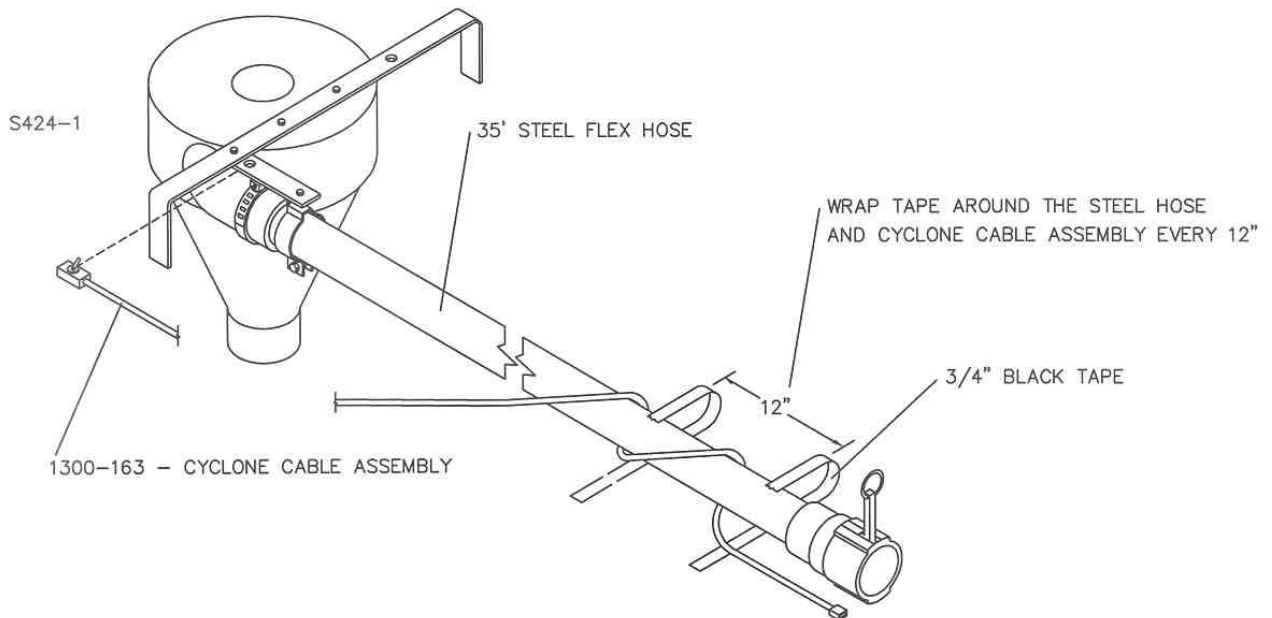
ASSEMBLY INSTRUCTIONS

SEED TRAIN TROLLEY 1300-133 (CONT.)

Step 12. Attach the 35' steel flex hose assembly to the airlock using the 2 1/2" aluminum cam lock coupler. Secure the cam latches with the hairpin clips.



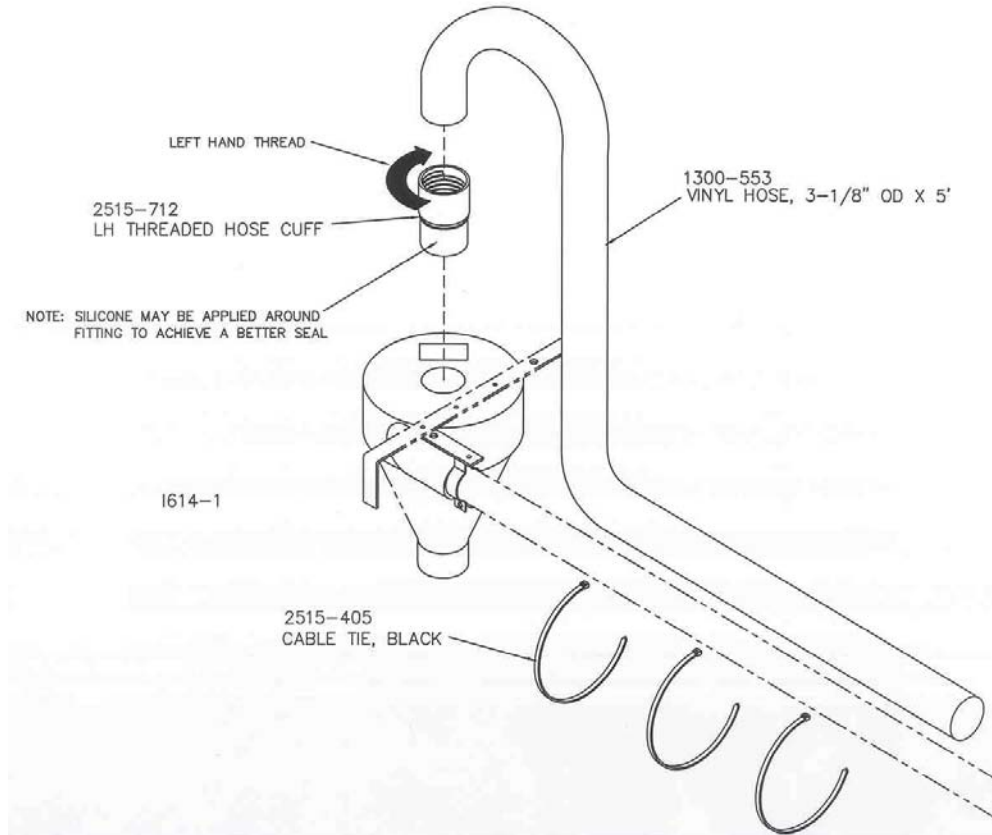
Step 13. Loosely coil the 1300-163 cyclone cable assembly around the 35' steel flex hose and secure with 3/4" black electrical tape at 12" increments.



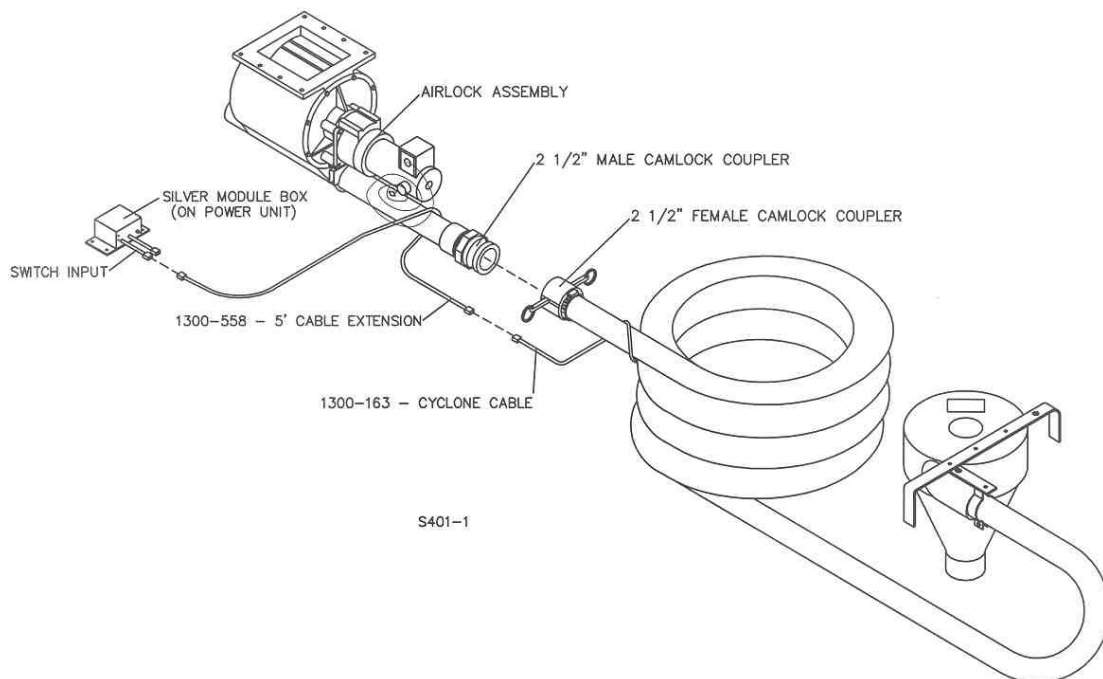
ASSEMBLY INSTRUCTIONS

SEED TRAIN TROLLEY 1300-133 (CONT.)

Step 14. Thread the 2515-712 L.H. threaded hose cuff onto the 1300-553 vinyl hose. Insert the hose cuff into the top of the cyclone. Secure the vinyl hose to the steel flex hose using the 3) 2515-405 cable ties.



Step 15. Connect the 1300-163-cyclone cable to the 1300-558 5' control cable extension and connect the 5' cable extension to the switch input plug of the silver module box on the power unit.

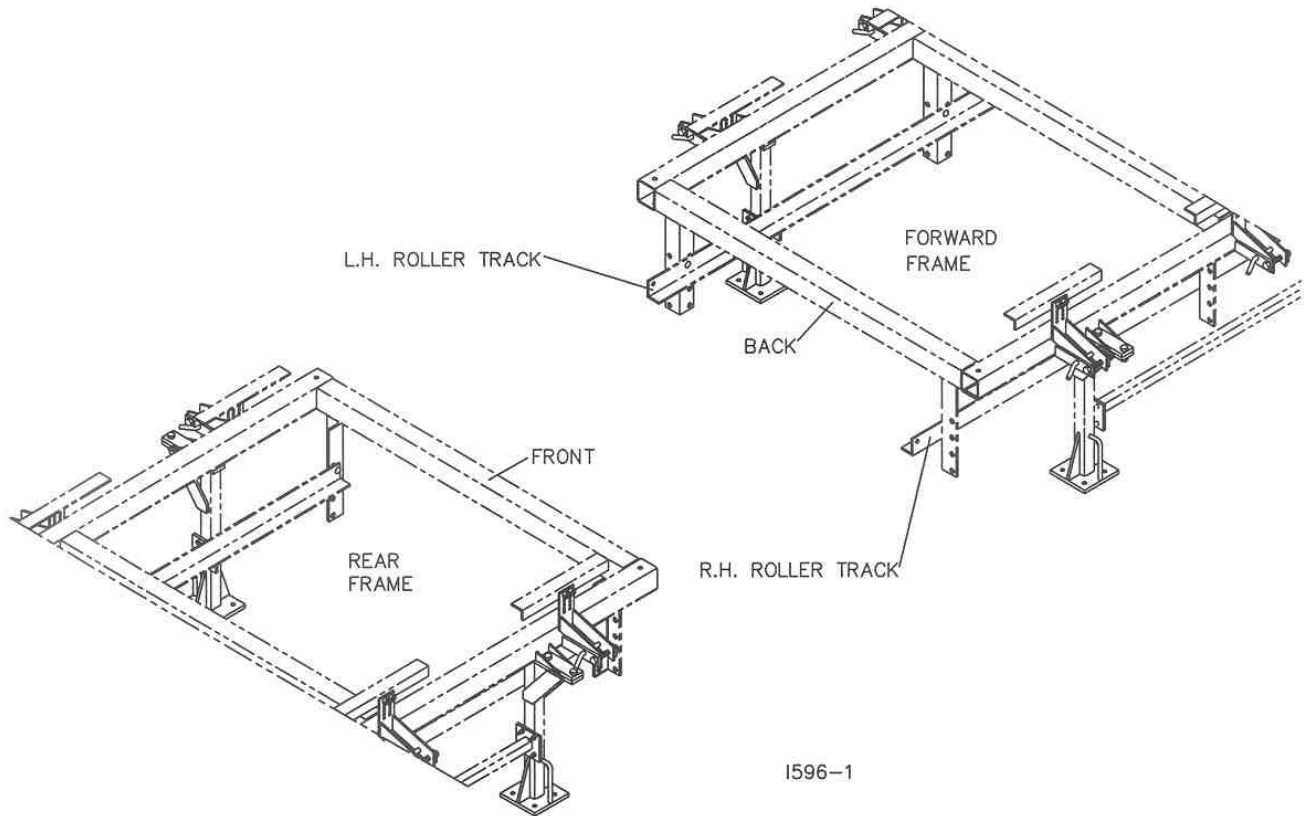


ASSEMBLY INSTRUCTIONS

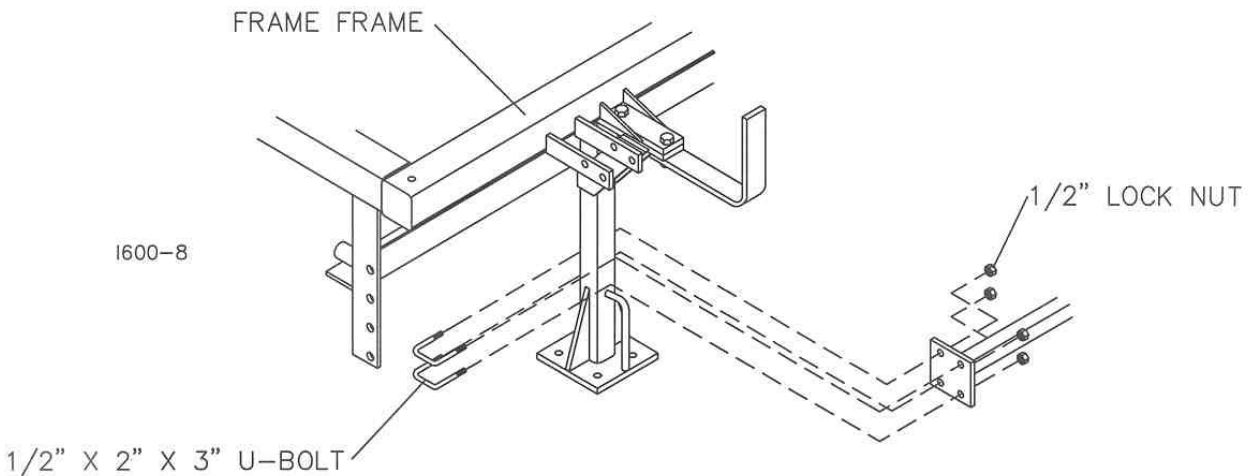
SEED TRAIN FRAME CONNECTION KIT 1300-131

When two or more frame assemblies are used together, the 1300-131-connection assembly must be used.

Step 1. Set the frames front to back of each other and aligned.



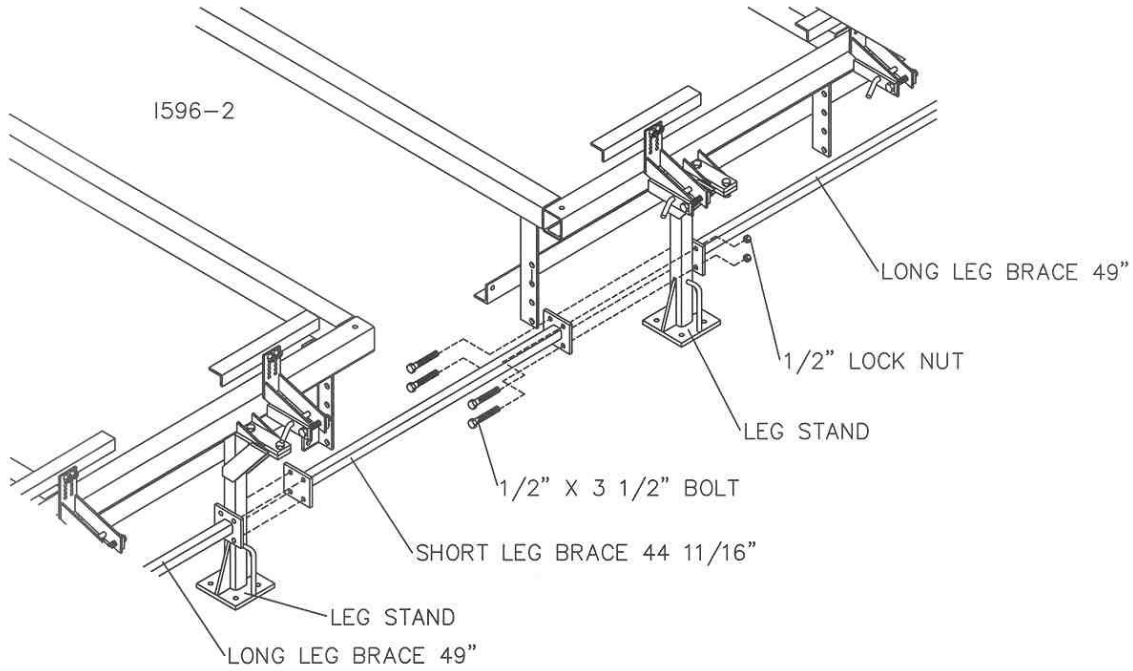
Step 2. Remove the $\frac{1}{2}$ " x 2" x 3" u-bolts from the back leg stands of the forward frame and front leg stands of the rear frame. Save the locknuts, they will be used in a later assembly.



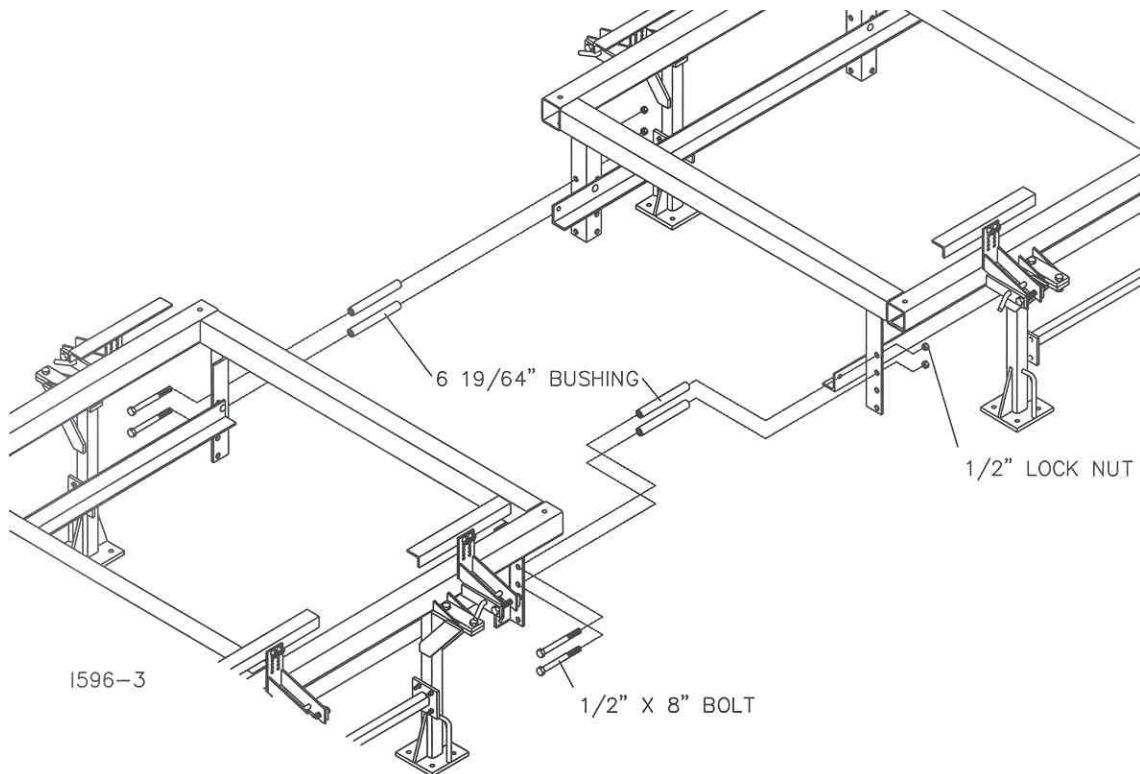
ASSEMBLY INSTRUCTIONS

SEED TRAIN FRAME CONNECTION KIT 1300-131 (CONT.)

Step 3. Attach the 2) short leg braces 1300-224 to the leg stands and the long leg braces using 8) $\frac{1}{2}$ " x 3 $\frac{1}{2}$ " bolts and re-using the $\frac{1}{2}$ " locknuts used previously with the u-bolts. **DO NOT TIGHTEN BOLTS.**



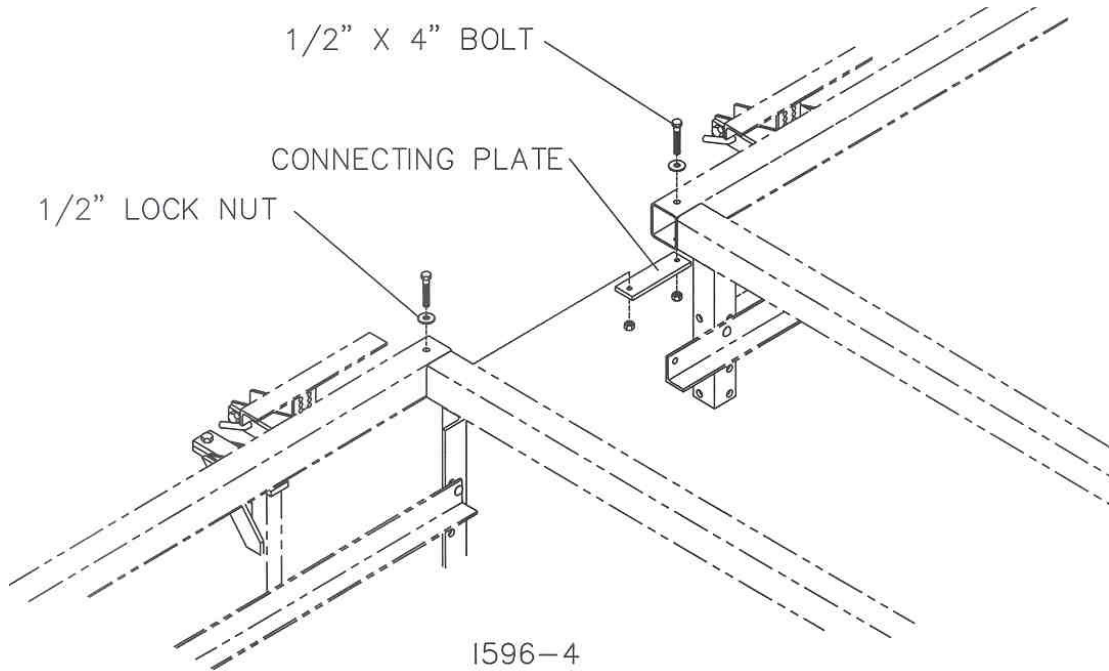
Step 4. Using the 4) $\frac{1}{2}$ " x 8" bolts, through the top two holes in the angle track bracket, 4) 6-19/64" bushings and $\frac{1}{2}$ " lock nuts, connect the frame assemblies. **DO NOT TIGHTEN BOLTS.**



ASSEMBLY INSTRUCTIONS

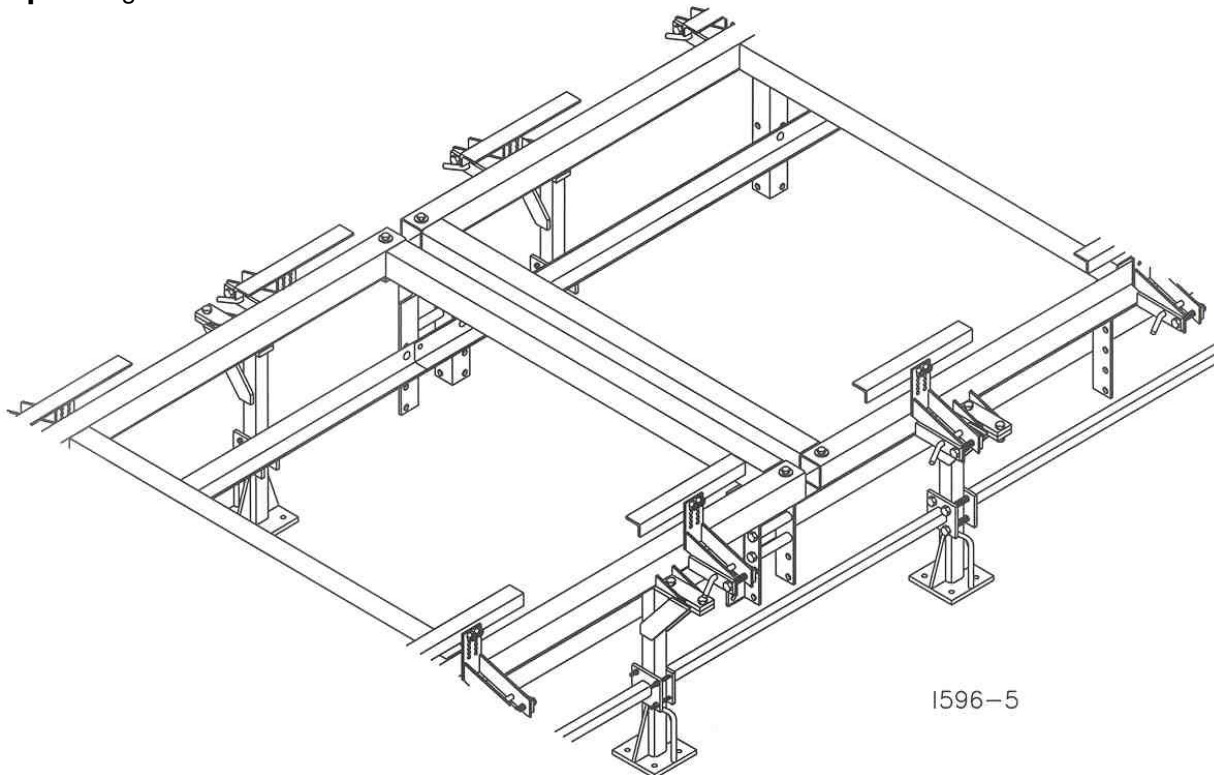
SEED TRAIN FRAME CONNECTION KIT 1300-131 (CONT.)

Step 5. Attach the 2) 1300-440 connecting plates to the frame assemblies using 4) 1/2" x 4" bolts and 1/2" lock nuts.

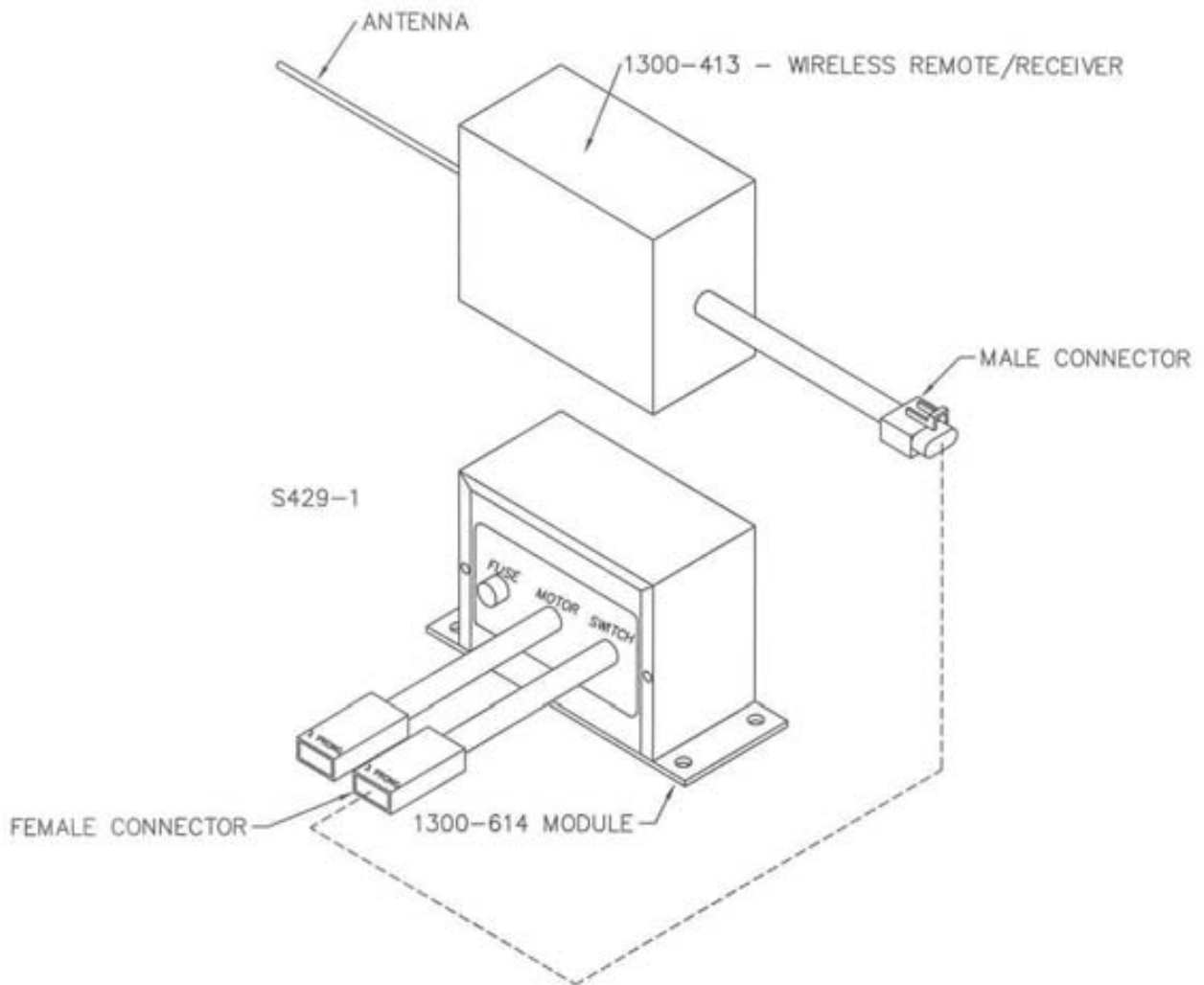


Step 6. Install/Move the roller track stops to the second frame assembly. (See Step 11, Page 13 for assembly instructions).

Step 7. Tighten all hardware.



ASSEMBLY INSTRUCTIONS



OPTIONAL REMOTE ASSEMBLY

1. CONNECT THE MALE WIRE CONNECTOR FROM THE 1300-413 REMOTE CONTROL TO THE SWITCH INPUT FEMALE WIRE CONNECTOR OF THE 1300-614 MODULE CONTROL BOX.
2. START THE GASOLINE ENGINE, ADJUST ENGINE THROTTLE LEVER TO "FAST/ RABBIT".
3. CHECK OPERATION OF THE REMOTE CONTROL SWITCH, PUSH BUTTON 1 ON THE REMOTE AND CHECK FOR AIRLOCK OPERATION PUSH BUTTON 1 AGAIN TO SHUT AIRLOCK OFF.
4. IF AIRLOCK FAILS TO SWITCH ON/OFF, CHECK THE FEMALE CONNECTOR FOR BENT PRONGS OR CONTACT YETTER TECHNICAL SERVICE 1-800-447-5777

OPERATING INSTRUCTIONS

1. Before running, fill engine and blower with recommended oil and gasoline. To prolong engine and blower life, always allow the engine to run at fast idle for at least (1) minute before running at full throttle. In operation the engine must run at full throttle for satisfactory performance of the seed system.
2. The switch mounted on the cyclone controls the rotation of the airlock, powered by the 12 volt motor. Correct airlock rotation is toward the brush.

DANGER: BEWARE OF UNEXPECTED START UP BY ANOTHER PERSON.

3. Adjust slide door opening on seed box so as to keep hopper full but not overflowing. It is advisable to close slide door and empty hopper before transporting the unit. Seed left in the airlock and exposed to moisture could swell and damage the airlock assembly.
4. Adjust the slide gate in bottom of hopper to maximum opening without overloading the engine and blower. To determine the operating rate of the Seed Jet II, straighten out the stainless hose and run it back into where you are running seed out. Pull the throttle up to full throttle and turn the airlock on. Gently pull the slide gate out until you notice the engine start to pull down or the hose to jump. Set at a rate where the motor and hose will run and operate smoothly. NOTE: The type of seed you use will determine where you set your rate.
5. Always shut off airlock and allow hose to clear of grain before throttling down the engine and shutting off the whole system.

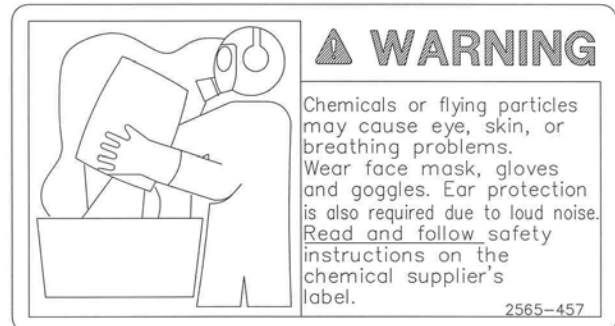
NOTE: There is a time delay from turning off the switch to when the material quits flowing from the cyclone, some practice may be necessary for precise filling of seed boxes.

SAFETY DECALS

AIRLOCK SAFETY



EYE, EAR, RESPIRATORY & FACE WARNING

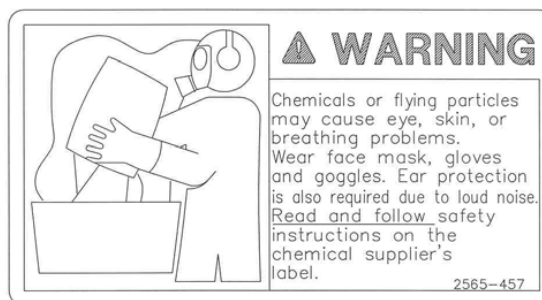


MAINTENANCE



WARNING: Never clean, lubricate or adjust a machine that is in motion. Failure to heed may result in serious personal injury or death.

1. Inspect daily and clean safety decals. Replace if torn or no longer functional.
2. Inspect daily the air cleaner element and clean or replace as required.
3. Inspect daily and retighten, as required, all bolts on the power unit and assemblies.
4. Inspect daily and repair, as required, all air hoses and fittings.
5. See blower manual for proper lubrication.
6. Inspect, refill and replace the blower oil per the instructions in the blower manual.
7. Inspect the airlock assembly, it must turn freely.
8. Do not allow the airlock assembly and the blower to be exposed to water.
9. Lubricate the airlock with “fogging oil” before and after the in-use season.
10. Clean and lubricate the machine before putting into storage. Do not leave seed or seed treatments/inoculants in or near the airlock.



STORAGE

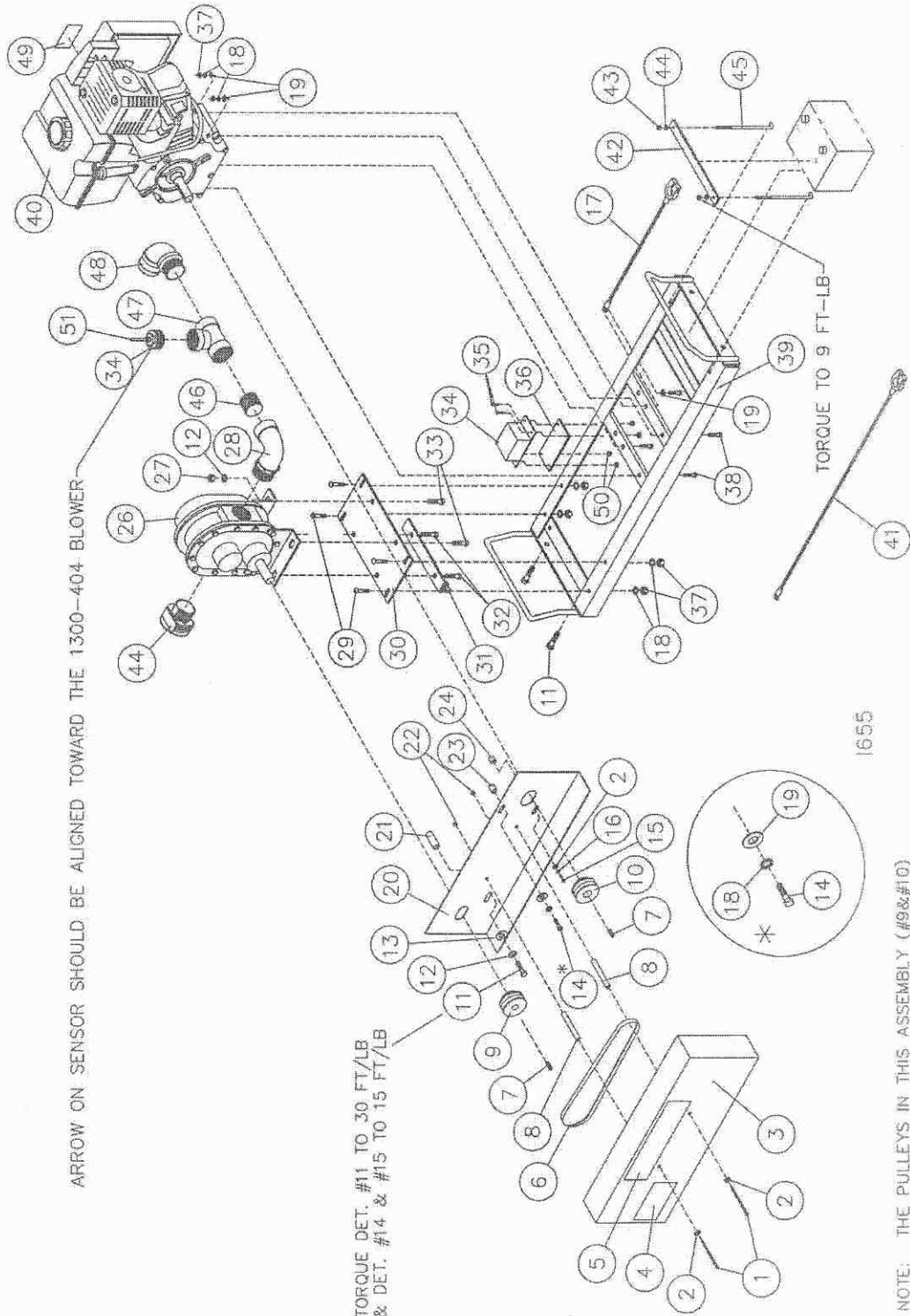
1. Inspect, refill and replace the blower oil per the instructions in the blower manual. Use a high quality hydraulic oil.
2. Inspect the airlock assembly, it must turn freely.
3. Do not allow the airlock assembly and blower to be exposed to water, moisture or condensation. Store in a clean dry area.
NOTE: If airlock and/or blower are exposed to water they will rust and may cause **NON-REPAIRABLE** internal damage.
4. Lubricate the airlock and blower with “fogging oil” before and after the in-use season.
5. Clean and lubricate the machine before putting into storage. Do not leave seed or seed treatments/inoculants in or near the airlock.
IMPORTANT: Do Not Use a pipe wrench to free a stuck airlock.
6. Remove hoses from all fittings, cap or cover the hoses, airlock and blower fittings to repel rodents and moisture and to seal in lubricants.
7. Gasoline engines stored over 30 days need to be protected or drained of fuel to prevent gum from forming in fuel system or essential carburetor parts. For gasoline engine protection, we recommend use of fuel stabilizer available from an authorized service dealer. Mix stabilizer with fuel tank or storage container. Run engine for a short time to circulate stabilizer through carburetor. Engine and fuel can be stored up to 24 months.

NOTE: If stabilizer is not used or if engine is operating on gasoline containing alcohol, e.g. gasohol, remove all fuel from tank and run engine until it stops from lack of fuel.

STORAGE PROCEDURES FOR GAS/LPG/NG ENGINES

1. Change oil.
2. Remove spark plug and pour about 15 ml (1/2oz.) of engine oil into cylinder. Replace spark plug and crank slowly to distribute oil.
3. Clean chaff and debris from cylinder and cylinder head fins, under finger guard and behind muffler.
4. Store in a clean and dry area, but NOT near a stove, furnace or water heater which uses a pilot light or any device that create a spark.

PARTS IDENTIFICATION 1300-183 – POWER UNIT ASSEMBLY (10/01) – (01/03)

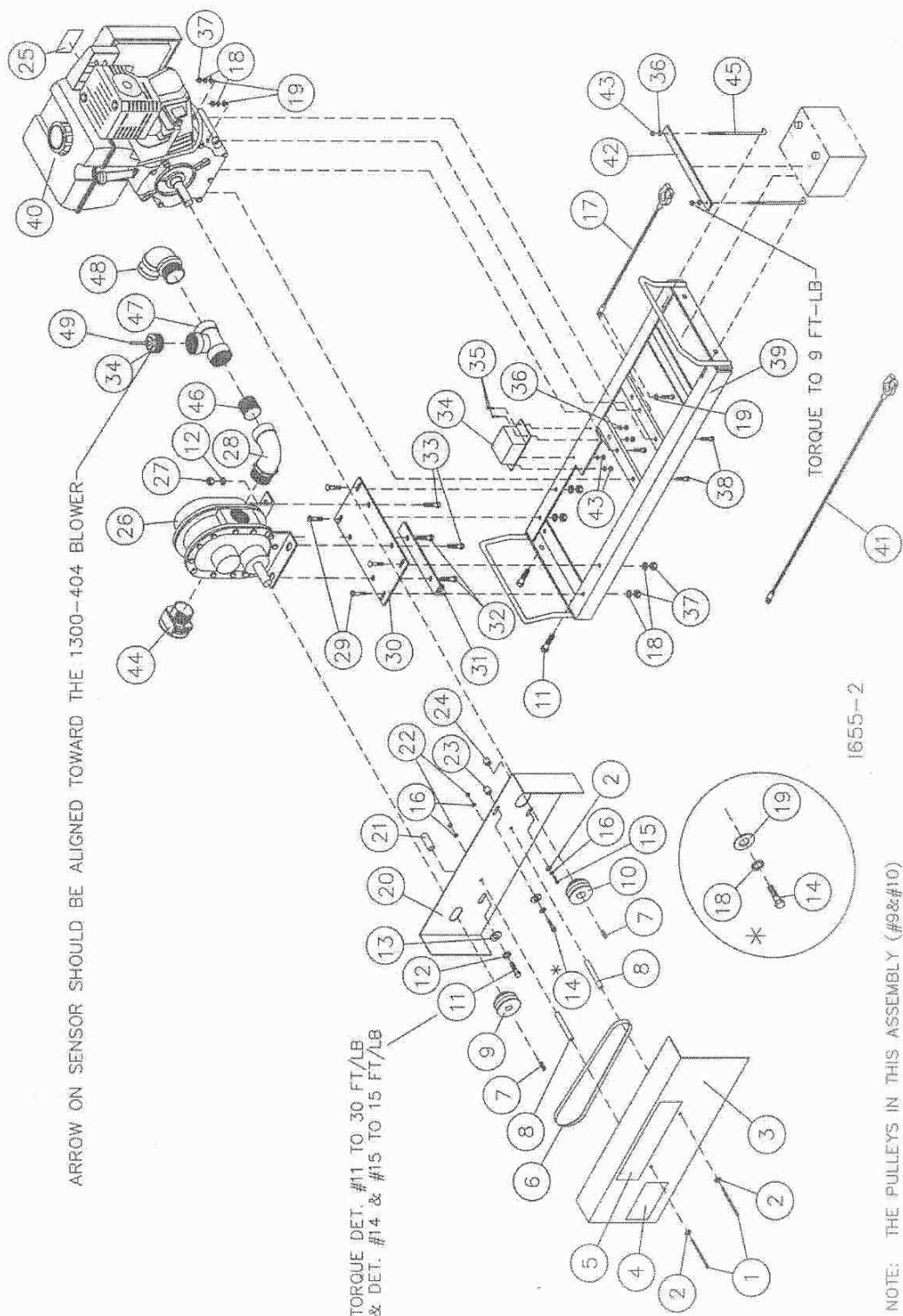


PARTS IDENTIFICATION

1300-183 POWER UNIT ASSEMBLY (10/01) - (01/03)

DET	QTY	PART NO.	DESCRIPTION	DET	QTY	PART NO.	DESCRIPTION
1	2	2502-224	5/16-18 X 4 HHCS GR 5 ZYD	26	1	1300-404	BLOWER, ROOTS 33 URAL, BLACK
2	3	2526-201	5/16 STANDARD FLATWASHER ZYD	27	4	2520-352	1/2-13 HEX NUT ZYD
3	1	1300-238	SHIELD FRONT	28	2	2532-827	2" POLY PIPE STREET ELBOW 90°
4	1	2565-457	EYE, EAR, & FACE WARNING DECAL	29	4	2505-260	3/8-16 X 1 CAR BLT GR 5 ZYD
5	1	2565-439	SEED JET II DECAL	30	1	1300-385	BLOWER MOUNT PLATE
6	1	1300-617	V BELT, 2/3V450 BELT	31	1	1300-217	BLOWER ADJUSTMENT W.A.
7	2	2590-035	1/4 X 1/4 X 1 KEY	32	2	2502-317	1/2-13 X 1-3/4 HHCS GR. 5 ZYD
8	2	1300-556	.37IDX1/20DX3-1/8 SHIELD BUSH.	33	2	2502-294	1/2-13 X 1-1/2 HHCS GR. 5 ZYD
9	1	1300-616	PULLEY, 2F3V28 X 3/4"	34	1	1300-614	SOLENOID INTERFACE MODULE (10/01)
10	1	1300-615	PULLEY, 2F3V28 X 1"	35	4	2502-105	1/4-20 X 3/4 HHCS GR.5 ZYD
11	3	2502-296	1/2-13 X 2-1/2 HHCS GR 5 ZYD	36	1	1300-406	MODULE MOUNT PLATE
12	5	2525-352	1/2 MED LOCKWASHER ZYD	37	8	2520-251	3/8-16 HEX NUT ZYD
13	1	2526-351	1/2 STANDARD FLATWASHER ZYD	38	4	2502-240	3/8-16 X 2 HHCS GR5 ZYD
14	1	2502-245	3/8-16 X 1-3/4 HHCS GR 5 ZYD	39	1	1300-245	POWER UNIT FRAME W.A. (8/00)
15	1	2502-213	5/16-24 X 1-1/2 HHCS GR. 5 ZYD	40	1	1300-613	MOTOR, B&S 11HP (235437)
16	1	2525-201	5/16 MED. LOCKWASHER ZYD	41	1	2514-311	TOP TERM BAT CABLE,6GA X 30"
17	1	2514-312	TOP TERM BAT CABLE, 6GA. X 15"	42	1	1300-383	BATTERY CLAMP, PAINTED
18	9	2525-251	3/8 MED. LOCKWASHER ZYD	43	2	2520-151	1/4-20 HEX NUT ZYD
19	6	2526-251	3/8 STANDARD FLATWASHER ZYD	44	2	2525-151	1/4 MED. LOCK WASHER ZYD.
20	1	1300-555	SHIELD MOUNT	45	2	1300-407	J-BOLT, 1/4-20 X 7 1/2 ZYD
21	1	1300-557	.531IDX3/40DX1-13/16"BLWR SPCR	46	1	2532-826	2" SHORT POLY PIPE NIPPLE
22	2	2520-205	5/16 HEX LOCK NUT ZYD	47	1	2532-825	2" POLY PIPE TEE
23	1	1300-612	.385 IDX.625 ODX.75 LONG BUSH.	48	1	2532-802	2" MALE ADPT X 2" MALE NPT(200F)
24	1	1300-611	.313 IDX.75 ODX19/32 LONG BUSH.	49	1	2565-481	ENGINE STOP DECAL
25	1	2532-828	2" VENT CAP W/SCREEN	50	4	2520-152	1/4-20 HEX LOCK NUT ZYD
				51	1	1300-637	MODULE SWITCH ASSEMBLY
						1300-638	MODULE SWITCH

PARTS IDENTIFICATION
1300-183 – POWER UNIT ASSEMBLY (01/03 – 11/06)



PARTS IDENTIFICATION

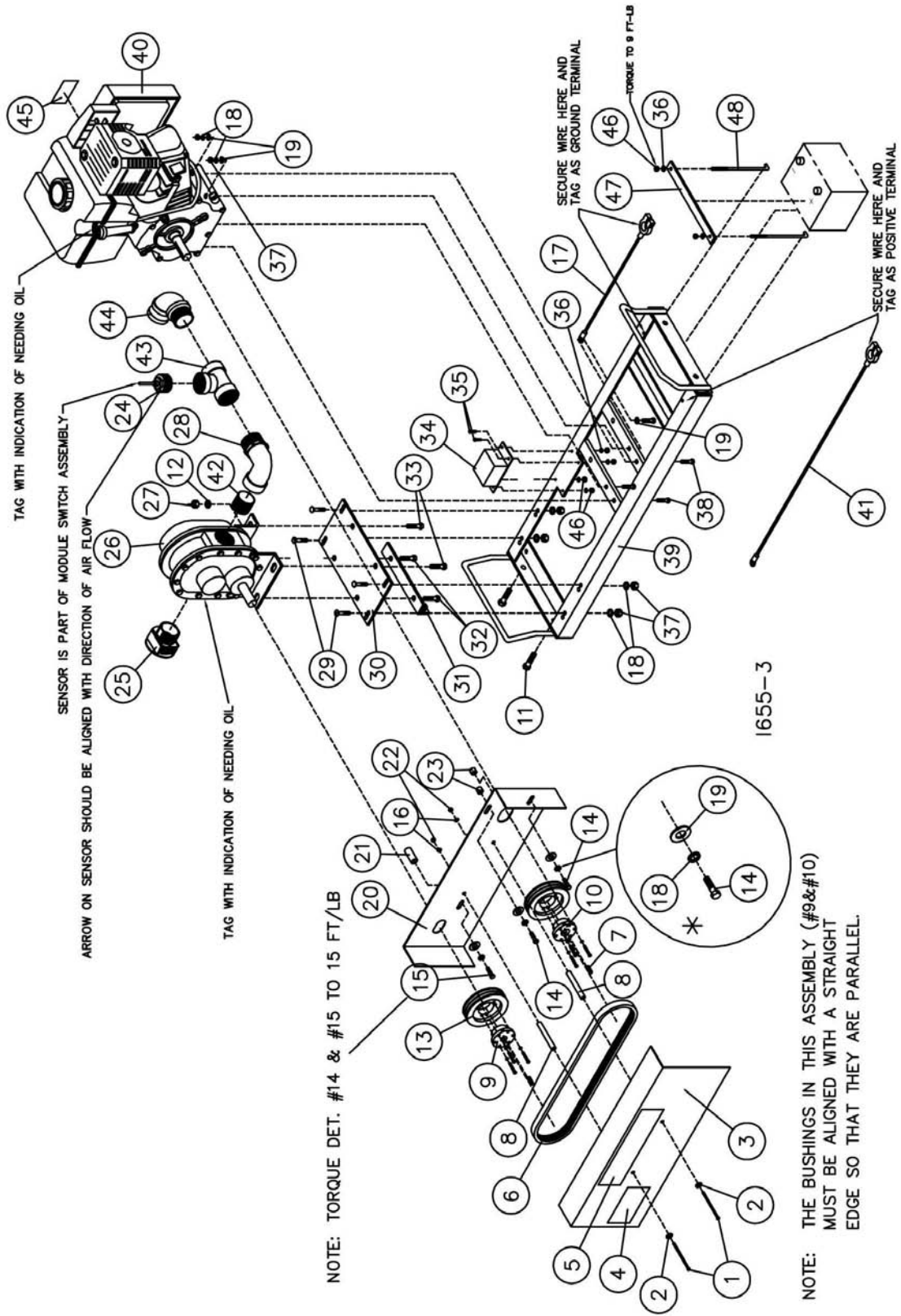
1300-183 POWER UNIT ASSEMBLY (01/03 - 11/06)

DET	QTY	PART NO.	DESCRIPTION	DET	QTY	PART NO.	DESCRIPTION
1	2	2502-224	5/16-18 X 4 HHCS GR 5 ZP	26	1	1300-404	BLOWER, ROOTS 33 URAL, BLACK
2	3	2526-201	5/16 STANDARD FLATWASHER ZP	27	4	2520-352	1/2-13 HEX NUT ZP
3	1	1300-623	SHIELD FRONT	28	1	2532-827	2" POLY PIPE STREET ELBOW 90°
4	1	2565-457	EYE, EAR, & FACE WARNING DECAL	29	4	2505-260	3/8-16 X 1 CAR BLT GR 5 ZP
5	1	2565-439	SEED JET II DECAL	30	1	1300-385	BLOWER MOUNT PLATE
6	1	1300-617	V BELT, 2/3V450 BELT	31	1	1300-217	BLOWER ADJUSTMENT W.A.
7	2	2590-035	1/4 X 1/4 X 1 KEY	32	2	2502-317	1/2-13 X 1-3/4 HHCS GR. 5 ZP
8	2	1300-556	.371DX1/20DX3-1/8 SHIELD BUSH.	33	2	2502-294	1/2-13 X 1-1/2 HHCS GR. 5 ZP
9	1	1300-616	PULLEY, 2F3V28 X 3/4"	34	1	1300-614	SOLENOID INTERFACE MODULE (10/01)
10	1	1300-615	PULLEY, 2F3V28 X 1"	35	4	2502-105	1/4-20 X 3/4 HHCS GR.5 Z.P.
11	3	2502-296	1/2-13 X 2-1/2 HHCS GR 5 ZP	36	6	2525-151	1/4 MED. LOCKWASHER ZP
12	5	2525-352	1/2 MED LOCKWASHER ZP	37	8	2520-251	3/8-16 HEX NUT ZP
13	1	2526-351	1/2 STANDARD FLATWASHER ZP	38	4	2502-240	3/8-16 X 2 HHCS GR5 ZP
14	1	2502-245	3/8-16 X 1-3/4 HHCS GR 5 ZP	39	1	1300-245	POWER UNIT FRAME W.A. (8/00)
15	1	2502-213	5/16-24 X 1-1/2 HHCS GR. 5 ZYD	40	1	1300-613	MOTOR, B&S 11HP (235437)
16	3	2525-201	5/16 MED. LOCKWASHER ZP	41	1	2514-311	TOP TERM BAT CABLE,6GA X 30"
17	1	2514-312	TOP TERM BAT CABLE, 6GA. X 15"	42	1	1300-383	BATTERY CLAMP, PAINTED
18	9	2525-251	3/8 MED. LOCKWASHER ZP	43	6	2520-151	1/4-20 HEX NUT ZP
19	6	2526-251	3/8 STANDARD FLATWASHER ZP	44	1	2532-828	2" VENT CAP W/SCREEN
20	1	1300-622	SHIELD BACK	45	2	1300-407	J-BOLT, 1/4-20 X 7 1/2 ZP.
21	1	1300-557	.531DX3/40DX1-13/16"BLWR SPCR	46	1	2532-826	2" SHORT POLY PIPE NIPPLE
22	2	2520-201	5/16 HEX NUT ZP	47	1	2532-825	2" POLY PIPE TEE
23	1	1300-612	.385 IDX.625 ODX.75 LONG BUSH.	48	1	2532-829	90° MALE ADAPTER/2" MALE THREAD
24	1	1300-611	.313 IDX.75 ODX19/32 LONG BUSH.	49	1	1300-637	MODULE SWITCH ASSEMBLY
25	1	2565-481	ENGINE STOP DECAL			1300-638	MODULE SWITCH

REVISED 12/3/03

PARTS IDENTIFICATION

1300-183 POWER UNIT ASSEMBLY (12/06 – 12/2011)



1655-3

PARTS IDENTIFICATION

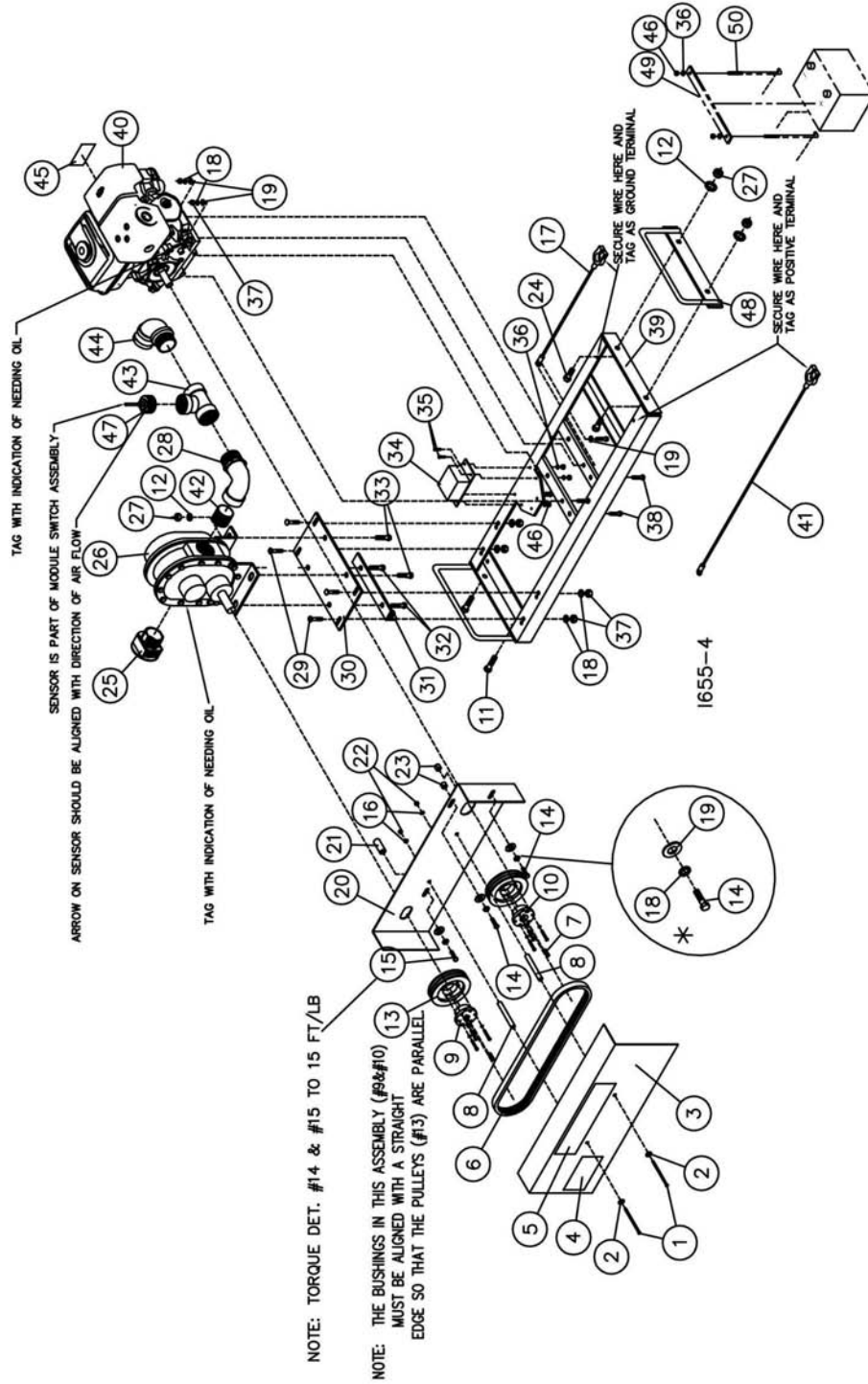
1300-183 POWER UNIT ASSEMBLY (12/06 - 12/2011)

DET	QTY	PART NO.	DESCRIPTION	DET	QTY	PART NO.	DESCRIPTION
1	2	2502-224	5/16-18 X 4 HHCS GR 5 ZP	27	4	2520-352	1/2-13 HEX NUT ZP
2	2	2526-201	5/16 STANDARD FLATWASHER ZP	28	1	2532-827	2" POLY PIPE STREET ELBOW 90°
3	1	1300-623	SHIELD FRONT	29	4	2505-260	3/8-16 X 1 CAR BLT GR 5 ZP
4	1	2565-457	EYE, EAR, & FACE WARNING DECAL	30	1	1300-385	BLOWER MOUNT PLATE
5	1	2565-439	SEED JET II DECAL	31	1	1300-217	BLOWER ADJUSTMENT W.A.
6	1	1300-648	V-BELT, 3VX500	32	2	2502-317	1/2-13 X 1-3/4 HHCS GR. 5 ZP
7	1	2590-035	1/4 X 1/4 X 1 KEY	33	2	2502-294	1/2-13 X 1-1/2 HHCS GR. 5 ZP
8	2	1300-556	.37IDX1/2ODX3-1/8 SHIELD BUSH.	34	1	1300-614	SOLENOID INTERFACE MODULE (10/01)
9	1	1300-644	3/4" SPLIT TAPER BUSHING	35	4	2502-105	1/4-20 X 3/4 HHCS GR.5 Z.P.
10	1	1300-645	1" SPLIT TAPER BUSHING	36	6	2525-151	1/4 MED. LOCKWASHER ZP
11	2	2502-316	1/2-13 X 3-1/2 HHCS GR 5 ZP	37	8	2520-251	3/8-16 HEX NUT ZP
12	4	2525-352	1/2 MED LOCKWASHER ZP	38	4	2502-240	3/8-16 X 2 HHCS GR5 ZP
13	2	1300-643	5" PULLEY, 23V500 SH	39	1	1300-245	POWER UNIT FRAME W.A. (8/00)
14	2	2502-232	3/8-16 X 1 1/2 HHCS GR 5 ZYD	40	1	1300-613	MOTOR, B&S 11HP (235437)
15	1	2502-246	3/8-16 X 3 HHCS GR5 ZP	41	1	2514-311	TOP TERM BAT CABLE,6GA X 30"
16	2	2525-201	5/16 MED. LOCKWASHER ZP	42	1	2532-826	2" SHORT POLY PIPE NIPPLE
17	1	2514-312	TOP TERM BAT CABLE, 6GA. X 15"	43	1	2532-825	2" POLY PIPE TEE
18	10	2525-251	3/8 MED. LOCKWASHER ZP	44	1	2532-829	90° MALE ADAPTER/2" M THD
19	7	2526-251	3/8 STANDARD FLATWASHER ZP	45	1	2565-481	ENGINE STOP DECAL
20	1	1300-647	SHIELD BACK (2006)	46	6	2520-151	1/4-20 HEX NUT ZP
21	1	1300-646	.531IDX3/4ODX1.813" BLOWER SPACER	47	1	1300-383	BATTERY CLAMP, PAINTED
22	2	2520-201	5/16-18 HEX NUT ZP	48	2	1300-407	J-BOLT, 1/4-20 X 7 1/2 ZP.
23	2	1300-612	.385 IDX.625 ODX.5 LONG BUSH.				
24	1	1300-637	MODULE SWITCH ASSEMBLY				
25	1	2532-828	2" VENT CAP W/SCREEN				
26	1	1300-404	BLOWER, ROOTS 33 URAL, BLACK				

REVISED 12/19/06

PARTS IDENTIFICATION

1300-183 POWER UNIT ASSEMBLY (1/12 - PRESENT)



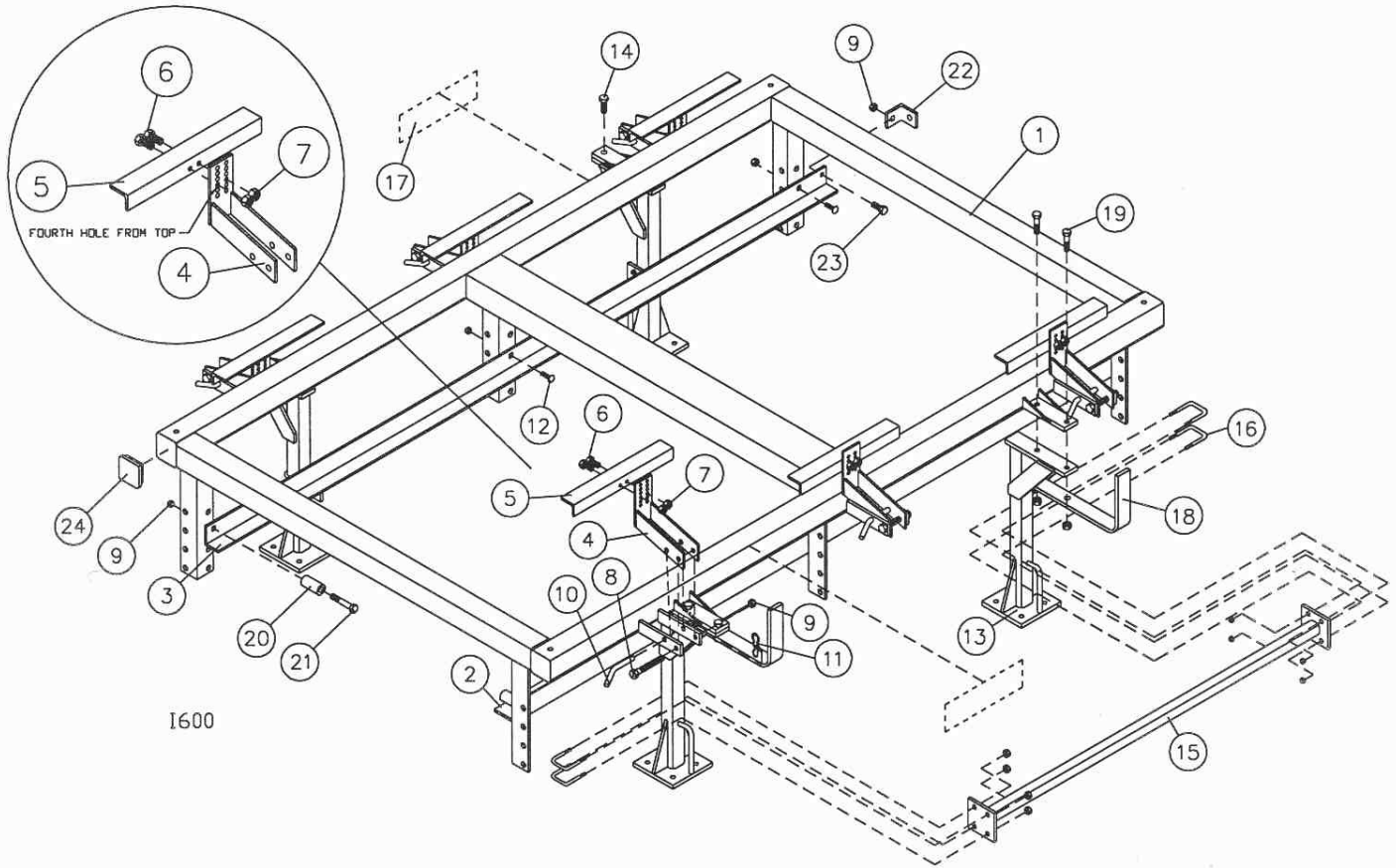
PARTS IDENTIFICATION

1300-183 POWER UNIT ASSEMBLY (1/12 - PRESENT)

DET	QTY	PART NO.	DESCRIPTION	DET	QTY	PART NO.	DESCRIPTION
1	2	2502-224	5/16-18 X 4 HHCS GR 5 ZP	26	1	1300-404	BLOWER, ROOTS 33 URAL, BLACK
2	2	2526-201	5/16 STANDARD FLATWASHER ZP	27	6	2520-352	1/2-13 HEX NUT ZP
3	1	1300-623	SHIELD FRONT	28	1	2532-827	2" POLY PIPE STREET ELBOW 90°
4	1	2565-457	EYE, EAR, & FACE WARNING DECAL	29	4	2505-260	3/8-16 X 1 CAR BLT GR 5 ZP
5	1	2565-439	SEED JET II DECAL	30	1	1300-385	BLOWER MOUNT PLATE
6	1	1300-648	V-BELT, 3VX500	31	1	1300-217	BLOWER ADJUSTMENT W.A.
7	1	2590-035	1/4 X 1/4 X 1 KEY	32	2	2502-317	1/2-13 X 1-3/4 HHCS GR. 5 ZP
8	2	1300-556	.37IDX1/20DX3-1/8 SHIELD BUSH.	33	2	2502-294	1/2-13 X 1-1/2 HHCS GR. 5 ZP
9	1	1300-644	3/4" SPLIT TAPER BUSHING	34	1	1300-614	SOLENOID INTERFACE MODULE (10/01)
10	1	1300-645	1" SPLIT TAPER BUSHING	35	4	2502-105	1/4-20 X 3/4 HHCS GR.5 Z.P.
11	2	2502-316	1/2-13 X 3-1/2 HHCS GR 5 ZP	36	6	2525-151	1/4 MED. LOCKWASHER ZP
12	6	2525-352	1/2 MED LOCKWASHER ZP	37	8	2520-251	3/8-16 HEX NUT ZP
13	2	1300-643	5" PULLEY, 23V500 SH	38	4	2502-240	3/8-16 X 2 HHCS GR5 ZP
14	2	2502-232	3/8-16 X 1 1/2 HHCS GR 5 ZYD	39	1	1300-245	POWER UNIT FRAME W.A. (12/11)
15	1	2502-246	3/8-16 X 3 HHCS GR5 ZP	40	1	1310-586	13 HP ENGINE (HONDA GX390QNR2)
16	2	2525-201	5/16 MED. LOCKWASHER ZP	41	1	2514-311	TOP TERM BAT CABLE,6GA X 30"
17	1	2514-312	TOP TERM BAT CABLE, 6GA. X 15"	42	1	2532-826	2" SHORT POLY PIPE NIPPLE
18	10	2525-251	3/8 MED. LOCKWASHER ZP	43	1	2532-825	2" POLY PIPE TEE
19	7	2526-251	3/8 STANDARD FLATWASHER ZP	44	1	2532-829	90° MALE ADAPTER/2" M THD
20	1	1300-647	SHIELD BACK (2006)	45	1	2565-481	ENGINE STOP DECAL
21	1	1300-646	.531IDX3/40DX1.813" BLOWER SPACER	46	6	2520-151	1/4-20 HEX NUT ZP
22	2	2520-201	5/16-18 HEX NUT ZP	47	1	1300-637	MODULE SWITCH ASSEMBLY
23	2	1300-612	.385 IDX.625 ODX.5 LONG BUSH.	48	1	1300-257	HANDLE MOUNT PLATE WA, SEEDJET
24	2	2502-293	WU/ 1/2-13 X 1-1/4 HHCS GR 5 ZD	49	1	1300-383	BATTERY CLAMP, PAINTED
25	1	2532-828	2" VENT CAP W/SCREEN	50	2	1300-407	J-BOLT, 1/4-20 X 7-1/2 ZP.

REVISED 1/19/12

PARTS IDENTIFICATION



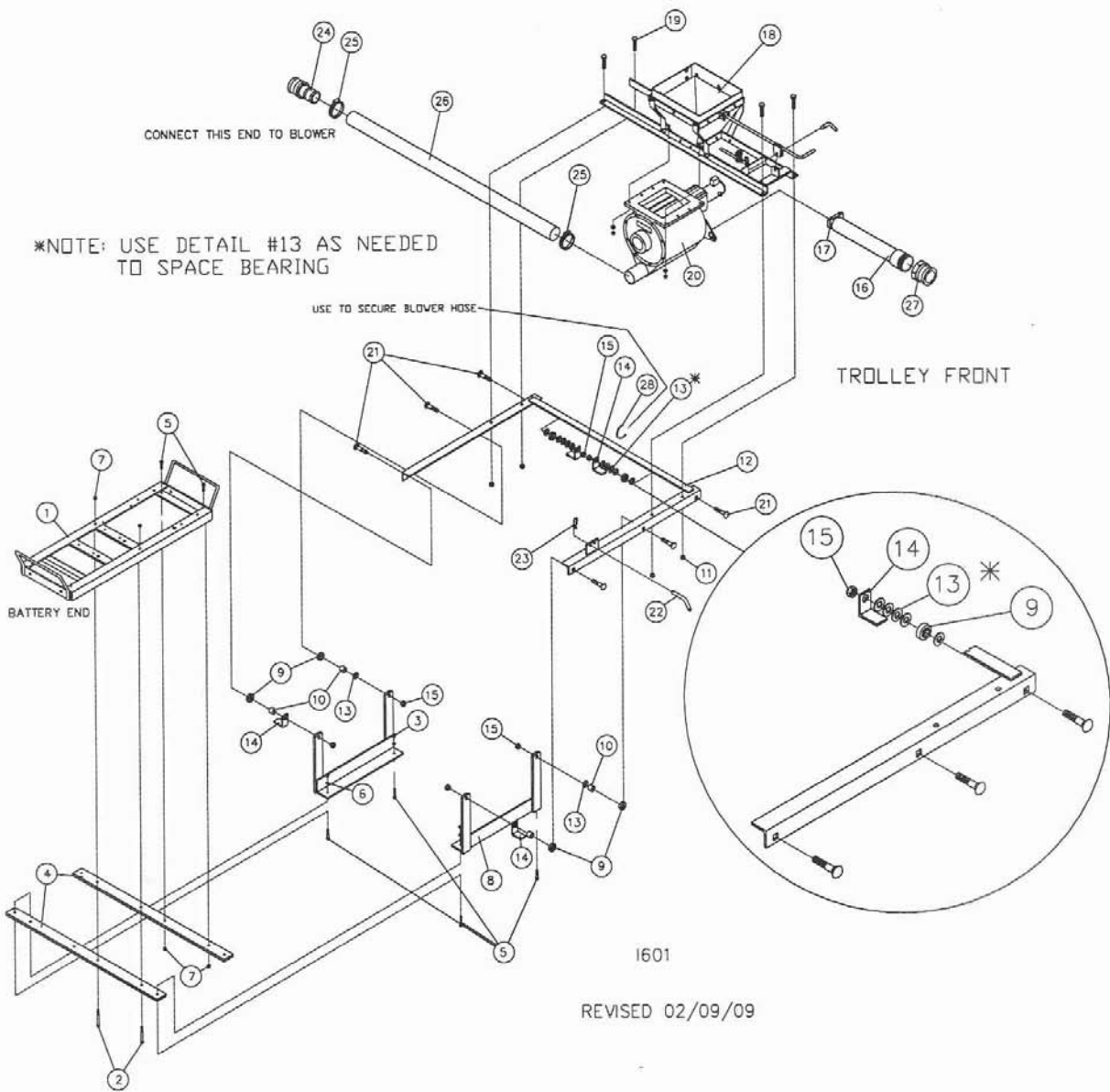
1600

1300-132 SEED TRAIN FRAME ASSEMBLY

DET	QTY	PART NO.	DESCRIPTION
1	1	1300-225	SEED TRAIN FRAME W.A.
2	1	1300-460	ROLLER TRACK (L.H.)
3	1	1300-459	ROLLER TRACK (R.H.)
4	6	1300-230	LATCH W.A.
5	6	1300-463	STAND CLAMP ANGLE, LONG
6	12	2502-237	3/8-16 X 1 HHCS GR.5 ZP
7	12	2520-255	3/8-16 LOCK HEX NUT ZP
8	6	2502-364	1/2-13 X 4 HHCS GR.5 ZP
9	36	2520-357	1/2-13 LOCK HEX NUT ZP
10	6	6100-321	TRANSPORT LOCK PIN ZP
11	6	2570-448	1/8 BOWTIE LOCKING COTTER ZYD.
12	6	2505-339	1/2-13 X 1-1/2 CAR BLT GR.5 ZP
13	4	1300-249	STAND W.A. (2/01)
14	4	2502-294	1/2-13 X 1-1/2 HHCS GR.5 ZP
15	2	1300-229	LEG BRACE W.A., LONG
16	8	2570-565	1/2 X 2 X 3 U-BOLT, ZYD
17	2	2565-439	SEED JET II DECAL
18	2	1300-478	HOSE HOOK
19	4	2502-351	1/2-13 X 2 HHCS GR. 5 ZP
20	2	2967-629	2" SPACER
21	2	2502-313	1/2-13 X 3 HHCS GR. 5 ZP
22	2	1300-494	TROLLEY REAR STOP-2X2X2 ANG
23	2	2502-292	1/2-13 X 1 HHCS GR. 5 ZP
24	4	2515-709	END CAP, 3 X 3 BAR

REVISED 02/13/09

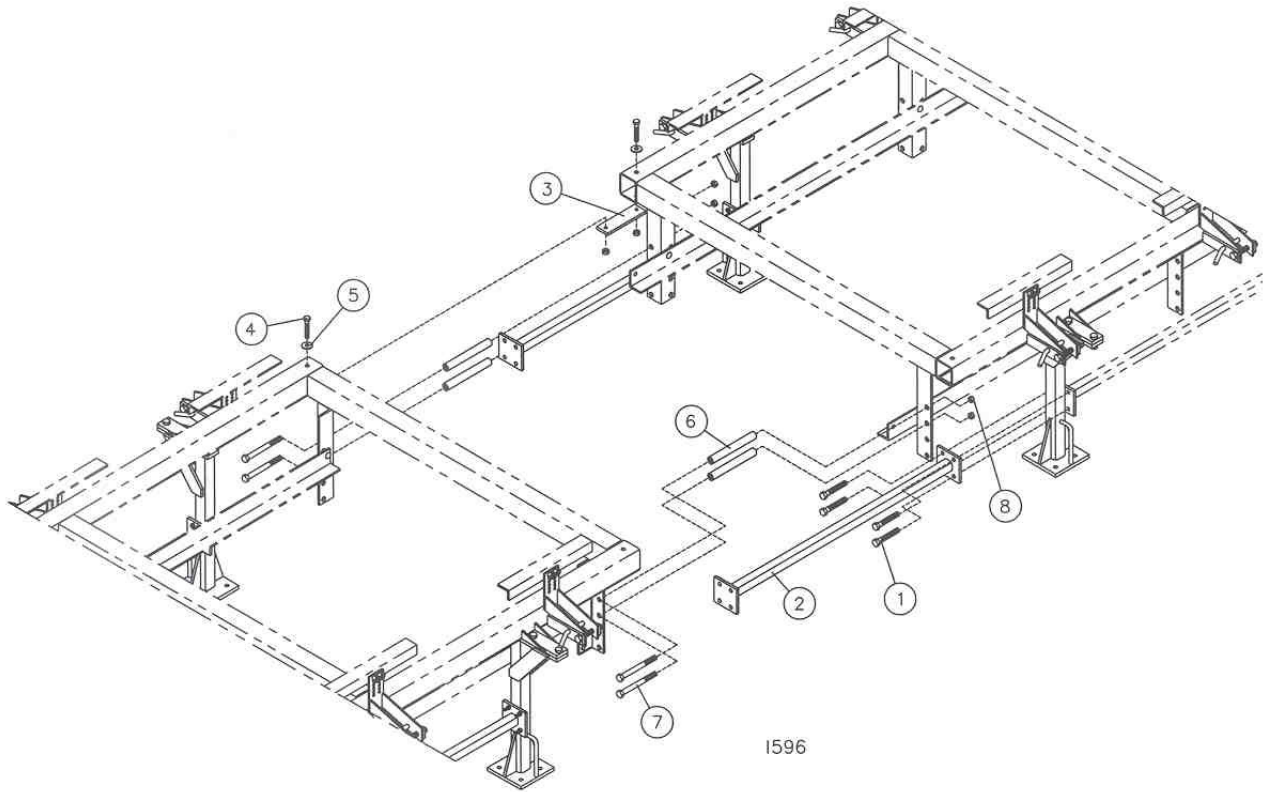
PARTS IDENTIFICATION



1300-133 SEED TRAIN TROLLEY ASSEMBLY

Key	Qty.	Part No.	Description	Key	Qty.	Part No.	Description
1	1	1300-183	POWER UNIT ASSEMBLY	16	1	1300-240	17" CL S.S. HOSE/2-1/2 NIPPLE
2	2	2502-246	3/8-16 X 3 HHCS GR 5 ZYD	17	1	2570-757	2-1/4" MUFFLER CLAMP
3	4	2520-251	3/8-16 HEX NUT ZYD	18	1	1300-144	SEED CHUTE ASSEMBLY
4	2	1300-573	MOTOR MOUNT STRAP	19	4	2502-292	1/2-13 x 1 HHCS GR 5 ZYD
5	6	2502-244	3/8-16 X 1-1/4 HHCS GR 5 ZYD	20	1	1300-151	AIRLOCK & MOTOR ASSEMBLY
6	4	2525-251	3/8 MED LOCK WASHER ZYD	21	6	2505-407	5/8-11 X 3 CAR BLT GR 5 ZYD
7	4	2520-255	3/8-16 LOCK HEX NUT ZYD	22	1	2965-305	PIN, FURROWING ATTACHMENT ZYD
8	2	1300-236	MOTOR TROLLEY W.A.	23	1	2570-448	1/8 STD. HAIRPIN COTTER ZYD
9	6	2550-016	R.H. BALL BEARING	24	1	2532-803	2" FEM CPLR X 2" HOSE BARB(200C)
10	4	2967-302	SPACER, 3/4, ZYD	25	2	2570-717	HOSE CLAMP, #36, TYPE F, STYL1
11	8	2520-357	1/2-13 LOCK HEX NUT ZYD	26	1	1300-610	RUBBER HOSE, 2" ID X 8' LONG
12	1	1300-235	TROLLEY ROLLER W.A.	27	1	2532-822	2-1/2" M/F ALUM CAMLOCK FITTING
13	12	2526-453	5/8 SAE FLAT WASHER ZYD	28	1	2515-552	CABLE TIE, .15 X 11.5", BLACK
14	4	1300-487	TROLLEY GUIDE				
15	6	2520-459	5/8-11 LOCK HEX NUT ZYD				

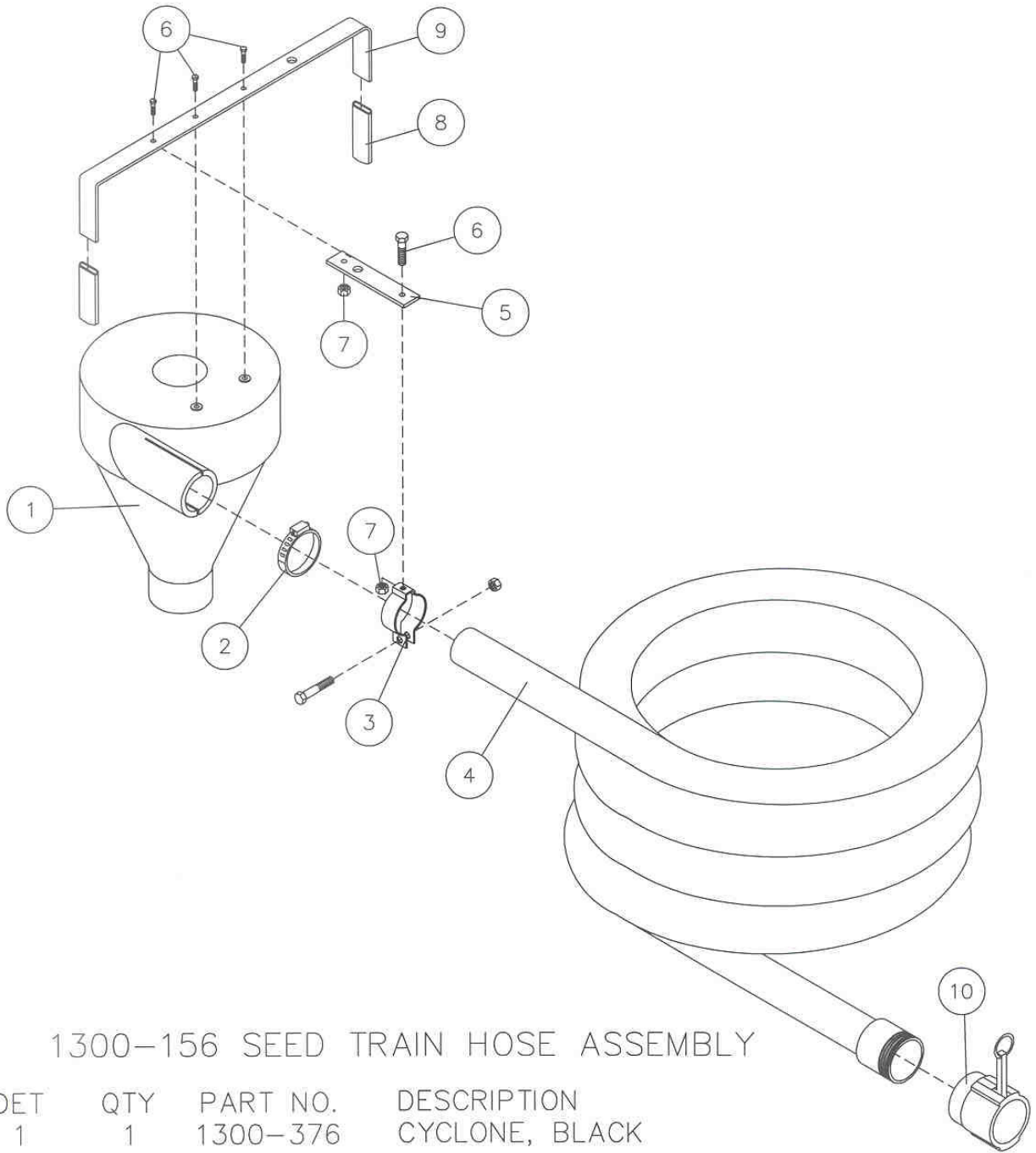
PARTS IDENTIFICATION



1300-131 SEED TRAIN CONNECTION ASSEMBLY

Key	Qty.	Part No.	Description
1	16	2502-316	1/2-13 x 3-1/2 HHCS Gr. 5 ZP
2	2	1300-224	Leg Brace W.A., Short
3	2	1300-440	Connecting Plate
4	4	2502-364	1/2-13 x 4 HHCS Gr. 5 ZP
5	4	2526-351	1/2 Standard Flatwasher ZP
6	4	1300-451	6-19/64" Bushing
7	4	2502-369	1/2-13 x 8 HHCS Gr. 5 ZP
8	24	2520-357	1/2-13 Lock Hex Nut ZP

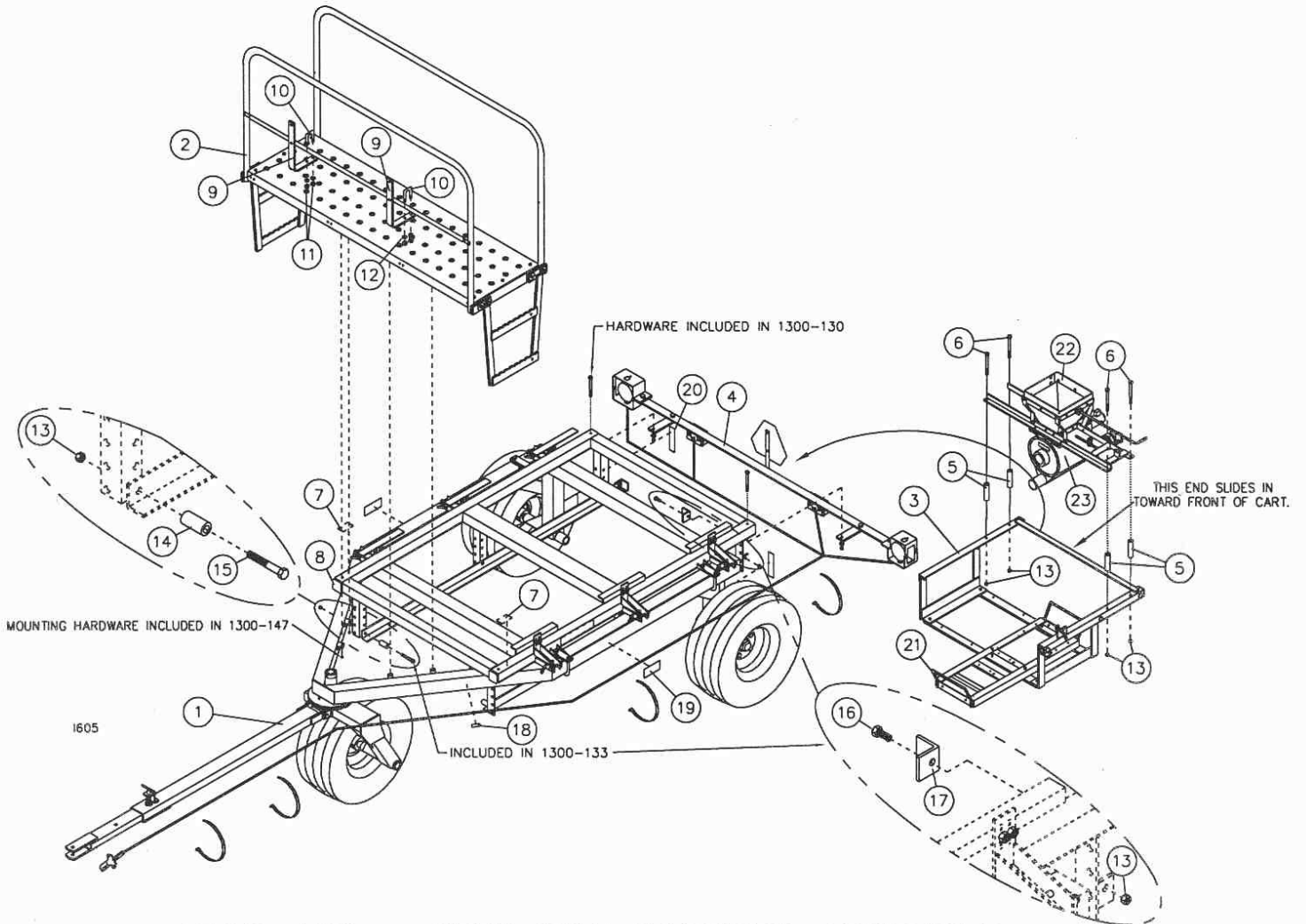
PARTS IDENTIFICATION



1300-156 SEED TRAIN HOSE ASSEMBLY

DET	QTY	PART NO.	DESCRIPTION
1	1	1300-376	CYCLONE, BLACK
2	1	2570-721	HOSE CLAMP,SAE #40,IDEAL 6740,SS
3	1	2570-767	2" CONDUIT HANGER ZP W/HDWE
4	1	1300-239	35' SS HOSE/2-1/2" NIPPLE W.A.
5	1	1300-549	CYCLONE BRACKET
6	4	2502-105	1/4-20 X 3/4 HHCS GR.5 Z.P.
7	2	2520-152	1/4-20 LOCK HEX NUT ZP
8	2	2515-711	GRIP, QUADRANT HANDLE
9	1	1300-548	CYCLONE HANDLE
10	1	2532-823	2 1/2" F/F ALUM CAMLOCK FITTING

PARTS IDENTIFICATION

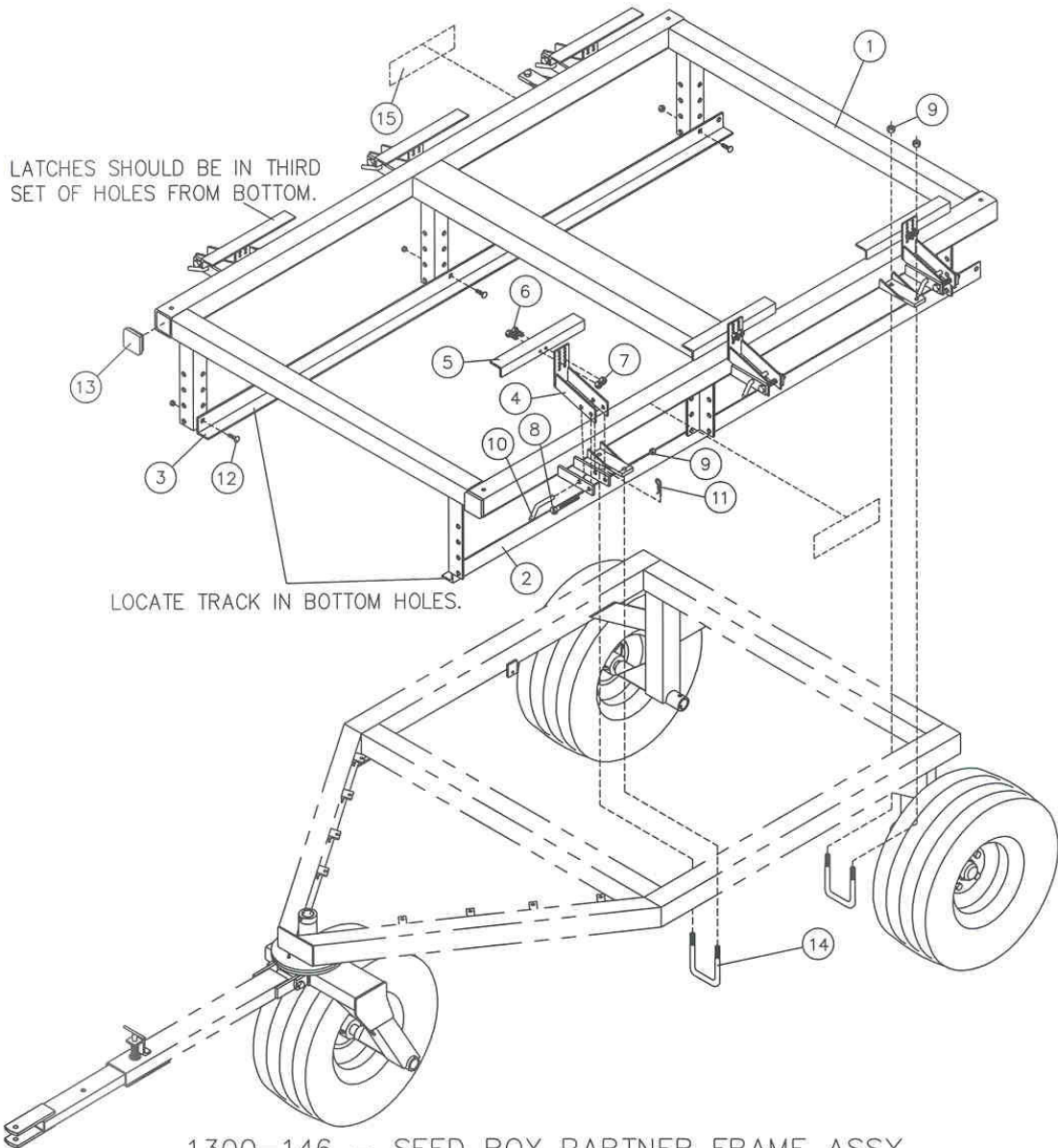


1300-150 – SEED BOX PARTNER ASSEMBLY

DET	QTY	PART NO.	DESCRIPTION	DET	QTY	PART NO.	DESCRIPTION
1	1	7100-101	FRAME SUB-ASSY	13	8	2520-357	1/2-13 LOCK HEX NUT ZP
2	1	1300-147	CATWALK ASSEMBLY	14	2	2967-629	2" SPACER
3	1	1300-133	SEED TRAIN TROLLEY ASSEMBLY	15	2	2502-313	1/2-13 X 3 HHCS GR. 5 ZP
4	1	1300-130	LIGHT KIT	16	2	2502-292	1/2-13 X 1 HHCS GR. 5 ZP
5	4	1300-541	CARRIAGE SPACER	17	2	1300-494	TROLLEY REAR STOP-2X2X2 ANGLE
6	4	2502-362	1/2-13 X 5 HHCS GR. 5 ZP	18	1	2565-466	SERIAL NUMBER DECAL
7	2	2565-461	WARNING-DO NOT RIDE DECAL	19	2	2565-457	EYE, EAR, & FACE WARNING DECAL
8	1	1300-146	SEED BOX PARTNER FRAME ASSY.	20	2	2565-459	RED REFLECTOR, 2 X 9
9	2	1300-478	HOSE HOOK	21	1	1300-183	POWER UNIT ASSEMBLY (01/03)
10	2	2570-589	1/2 X 1-1/4 X 2-1/2 U-BOLT ZYD	22	1	1300-144	SEED CHUTE ASSEMBLY
11	4	2520-352	1/2-13 HEX NUT ZP	23	1	1300-151	AIRLOCK & MOTOR ASSEMBLY
12	4	2525-352	1/2 MED LOCKWASHER ZP				

REVISED 02/09/09

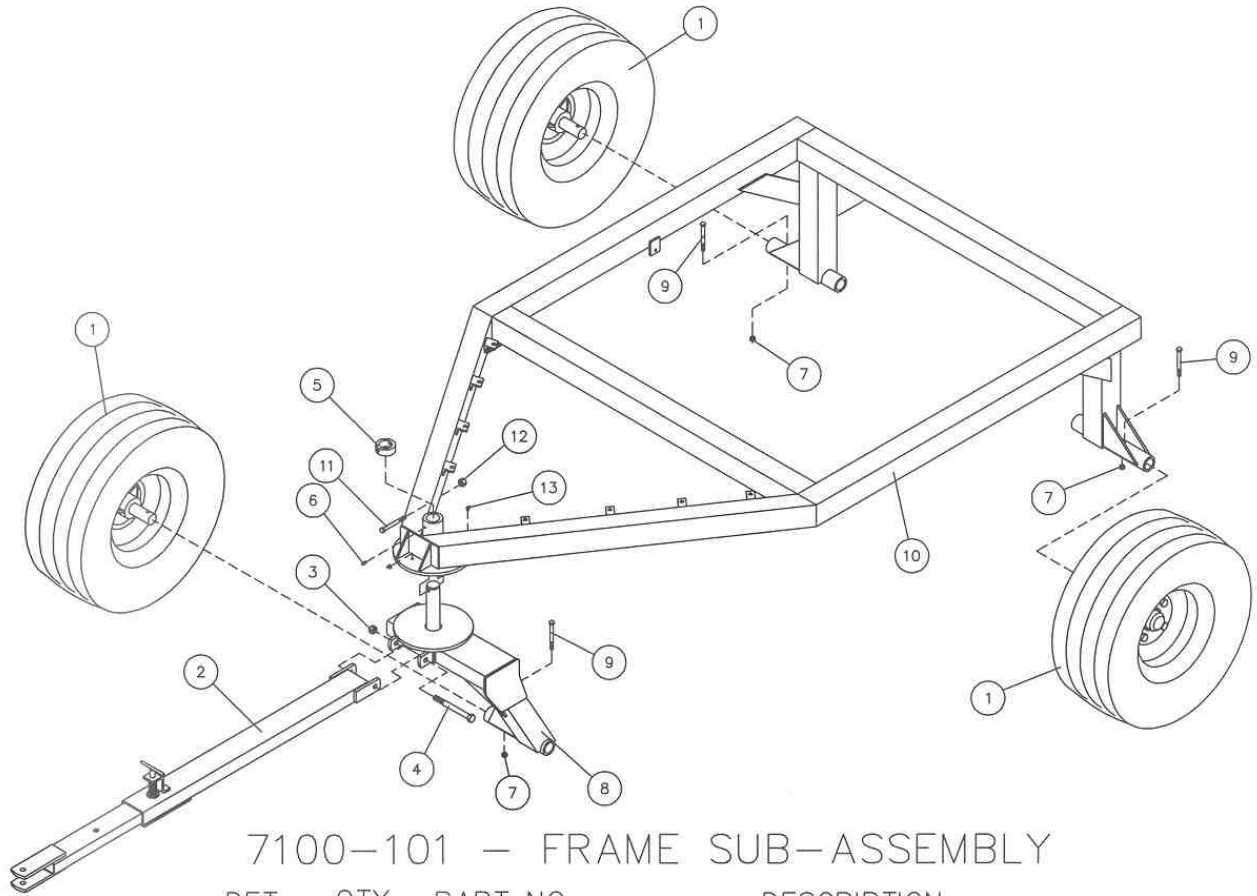
PARTS IDENTIFICATION



1300-146 — SEED BOX PARTNER FRAME ASSY.

DET	QTY	PART NO.	DESCRIPTION	DET	QTY	PART NO.	DESCRIPTION
1	1	1300-225	SEED TRAIN FRAME W.A.	9	20	2520-357	1/2-13 LOCK HEX NUT ZP
2	1	1300-460	ROLLER TRACK (L.H.)	10	6	6100-321	TRANSPORT LOCK PIN ZP
3	1	1300-459	ROLLER TRACK (R.H.)	11	6	2570-448	1/8 STD. HAIRPIN COTTER
4	6	1300-230	LATCH W.A.	12	6	2505-339	1/2-13 X 1 1/2 CAR. BOLT GR. 5 ZP
5	6	1300-463	STAND CLAMP ANGLE, LONG	13	4	2515-709	END CAP, 3 X 3 BAR
6	12	2502-237	3/8-16 X 1 HHCS GR. 5 ZP	14	4	2570-770	1/2 X 4 X 5 U-BOLT ZYD
7	12	2520-255	3/8-16 LOCK HEX NUT ZP	15	2	2565-439	SEED JET II DECAL
8	6	2502-364	1/2-13 X 4 HHCS GR. 5 ZP				

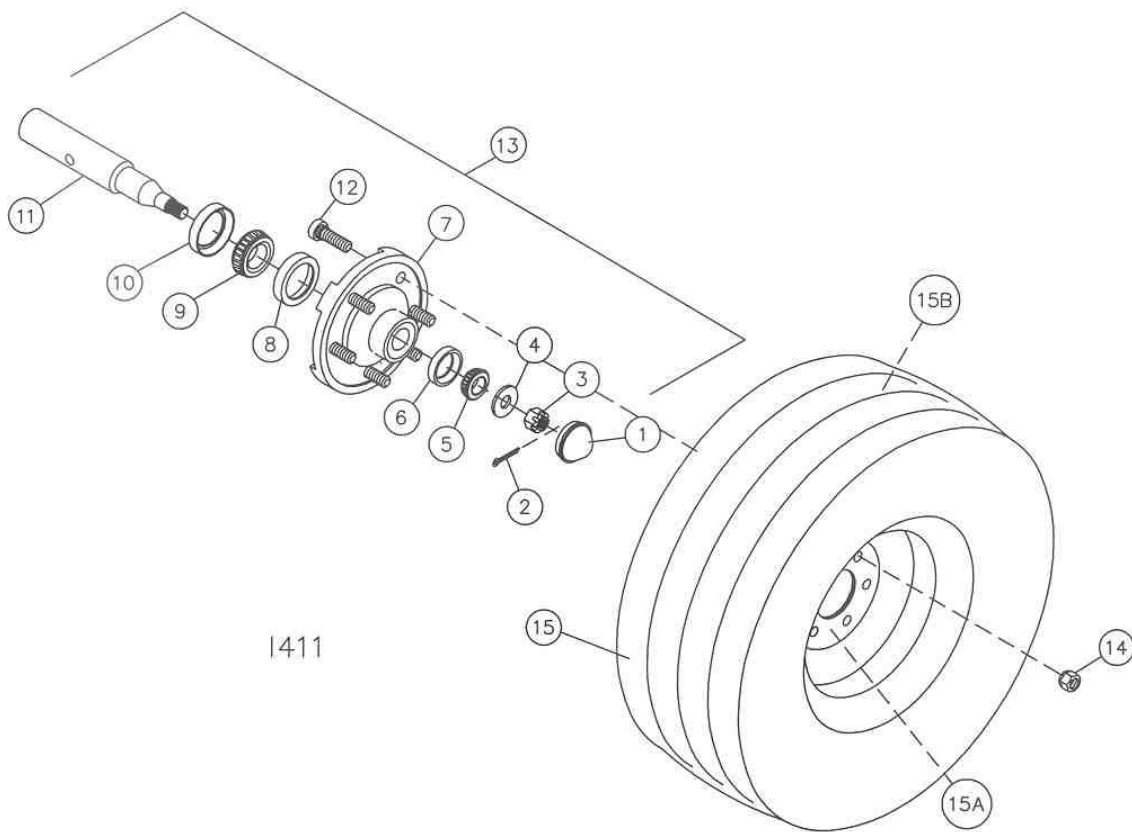
PARTS IDENTIFICATION



7100-101 — FRAME SUB-ASSEMBLY

DET	QTY	PART NO.	DESCRIPTION
1	3	7100-112	WHEEL & HUB (31-13.5 X 15) ASSY
2	1	7100-102	TONGUE ASSY
3	1	2520-515	3/4-10 LOCK HEX NUT
4	1	2502-405	3/4-10 X 8 HHCS GR 5 ZP
5	1	7100-399	BUSHING, PIVOT PIN
6	1	2533-110	1/4-28 ZERK STRAIGHT SELF-TAP
7	3	2520-357	1/2-13 LOCK HEX NUT ZP
8	1	7100-202	FRONT LEG W.A.
9	3	2502-313	1/2-13 X 3 HHCS GR 5 ZP
10	1	7100-200	FRAME W.A.
11	1	2502-246	3/8-16 X 3 HHCS GR 5 ZP
12	1	2520-255	3/8-16 LOCK HEX NUT
13	2	2533-107	1/4-28 ZERK (90 DEG) SELF TAP

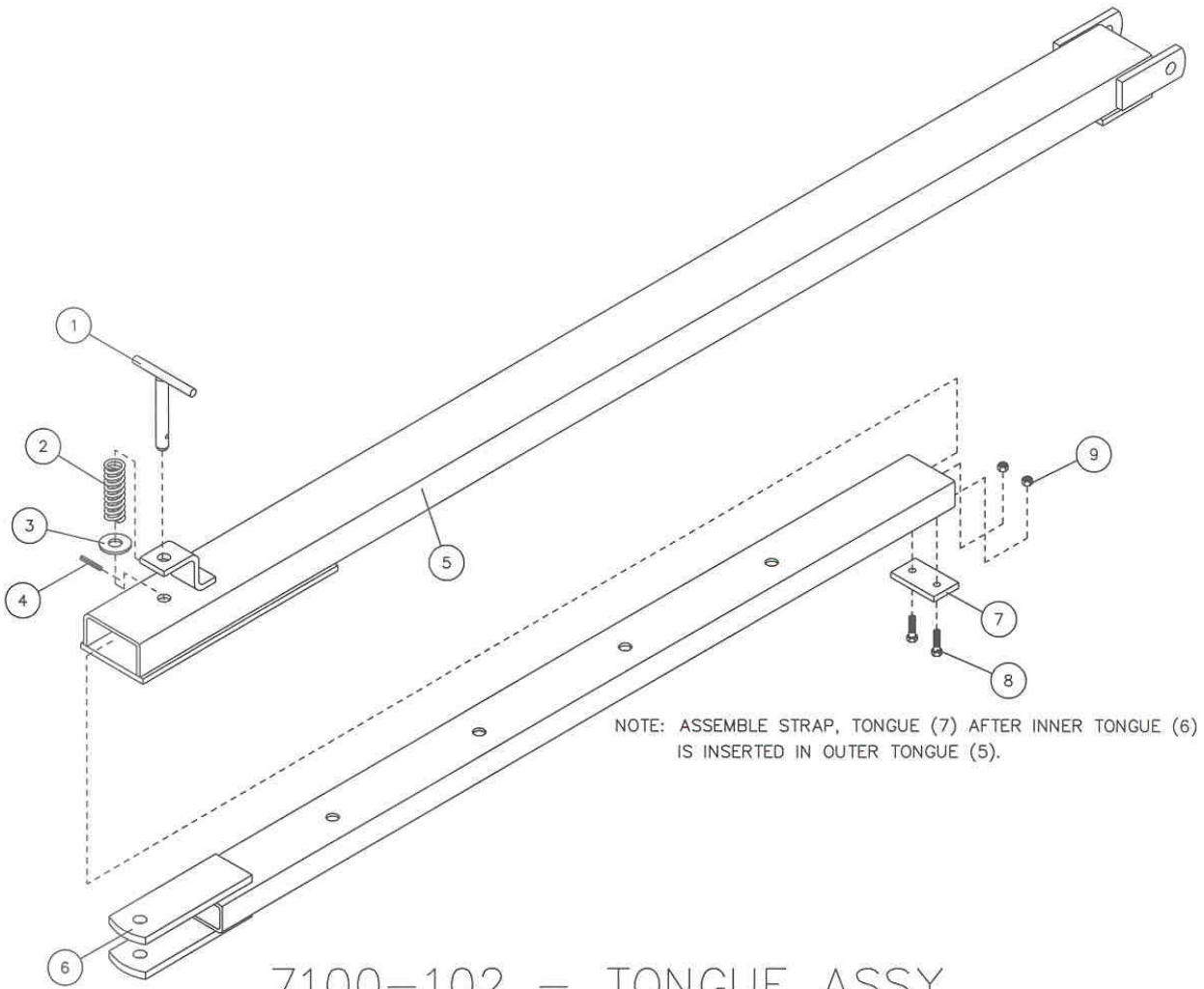
PARTS IDENTIFICATION



7100-112 – WHEEL & HUB (31-13.5 X 15) ASSY

DET	QTY	PART NO.	DESCRIPTION
1	1	2570-192	HUB CAP
2	1	2531-106	3/16 X 1-3/4" COTTER PIN, BLACK
3	1	2520-503	3/4-16 SLOTTED HEX NUT, BLACK
4	1	2526-501	3/4 STD. FLATWASHER,ZP
5	1	2550-027	CONE, LM 67048
6	1	2550-029	CUP, LM 67010
7	1	2570-189	HUB W/CUPS, LUGS
8	1	2550-030	CUP, LM29710
9	1	2550-028	CONE, LM29749
10	1	2570-191	SEAL
11	1	6600-336	SPINDLE, 1-3/4" DRILLED
12	6	2570-190	STUD, 1/2-20
13	1	6600-111	HUB & SPINDLE ASS'Y, 6 BOLT
14	6	2520-360	1/2-20 LUG NUT
15	1	7100-111	WHEEL/TIRE (31-13.5 X 15) ASSY
15A	1	2570-727	WHEEL, 15 X 10, WHITE
15B	1	2570-728	TIRE, 31-13.5 X 15, 8 PLY

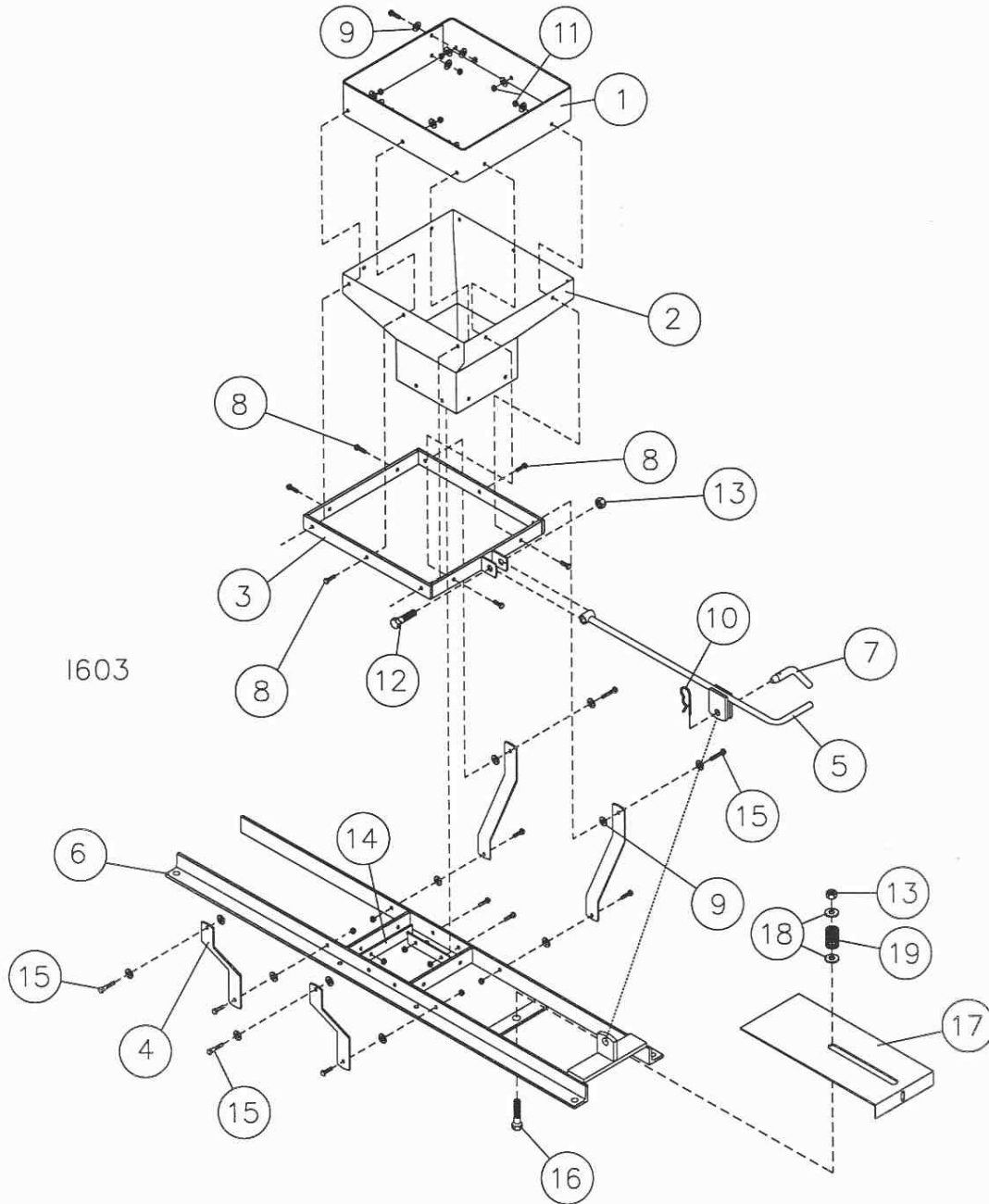
PARTS IDENTIFICATION



7100-102 – TONGUE ASSY

DET	QTY	PART NO.	DESCRIPTION
1	1	7100-210	PIN, TONGUE W.A. ZP
2	1	2550-761	THROW OUT CLUTCH SPRING, BLACK
3	1	2526-501	3/4 STANDARD FLATWASHER, ZP
4	1	2530-153	1/4 X 2 ROLL PIN ZP
5	1	7100-205	OUTER TONGUE W.A.
6	1	7100-206	INNER TONGUE W.A.
7	1	7100-392	STRAP, TONGUE W.A.
8	2	2502-237	3/8-16 X 1 HHCS GR 5 ZP
9	2	2520-255	3/8-16 LOCK HEX NUT ZP

PARTS IDENTIFICATION



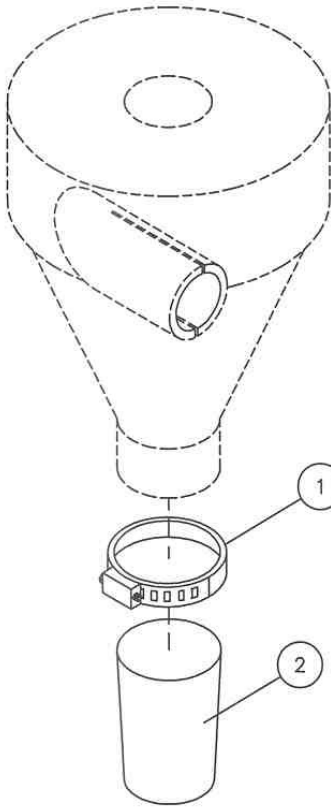
1603

1300-144 - SEED CHUTE ASSEMBLY

DET	QTY	PART NO.	DESCRIPTION	DET	QTY	PART NO.	DESCRIPTION
1	1	1300-489	RUBBER CHUTE	10	1	2570-448	1/8 STD. HAIRPIN COTTER
2	1	1300-488	SEED CHUTE	11	23	2520-152	1/4-20 LOCK HEX NUT ZP
3	1	1300-234	SEED CHUTE MOUNT W.A.	12	1	2502-317	1/2-13 X 1 3/4 HHCS GR.5 ZP
4	4	1300-486	SEED CHUTE LEG	13	2	2520-357	1/2-13 LOCK HEX NUT ZP
5	1	1300-233	HANDLE W.A.	14	4	1300-490	5" SEED CHUTE STRAP
6	1	1300-232	AIRLOCK CARRIAGE W.A.	15	4	2502-106	1/4 - 20 X 1-1/4 HHCS GR 5 ZP
7	1	2967-381	COMBO ADJUSTMENT PIN, ZP	16	1	2502-351	1/2-13 X 2 HHCS GR.5 ZP.
8	19	2502-110	1/4-20 X 1 HHCS GR.5 ZP	17	1	1300-618	SLOTTED SLIDE GATE
9	24	2526-151	1/4 STANDARD FLATWASHER ZP	18	2	2526-355	1/2 FLAT WASHER HARD'ND ZYD
				19	1	2550-769	SPRING, ADJUSTMENT PIN, ZYD

REVISED 02/09/09

PARTS IDENTIFICATION

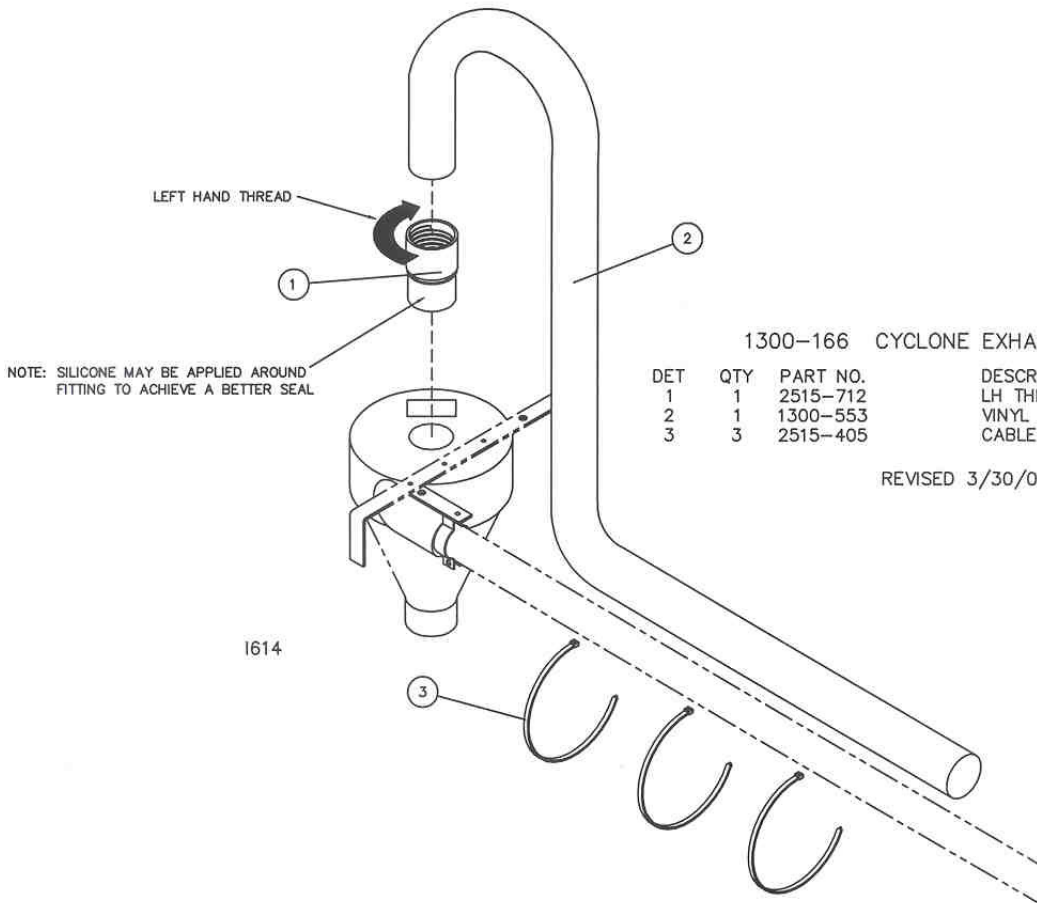


CYCLONE SHUTOFF

DET	QTY	DESCRIPTION
1	1	4 1/2" HOSE CLAMP
2	1	TUBE SOCK, 10" LONG OPEN ON BOTH ENDS

REVISED 9/17/01

S423

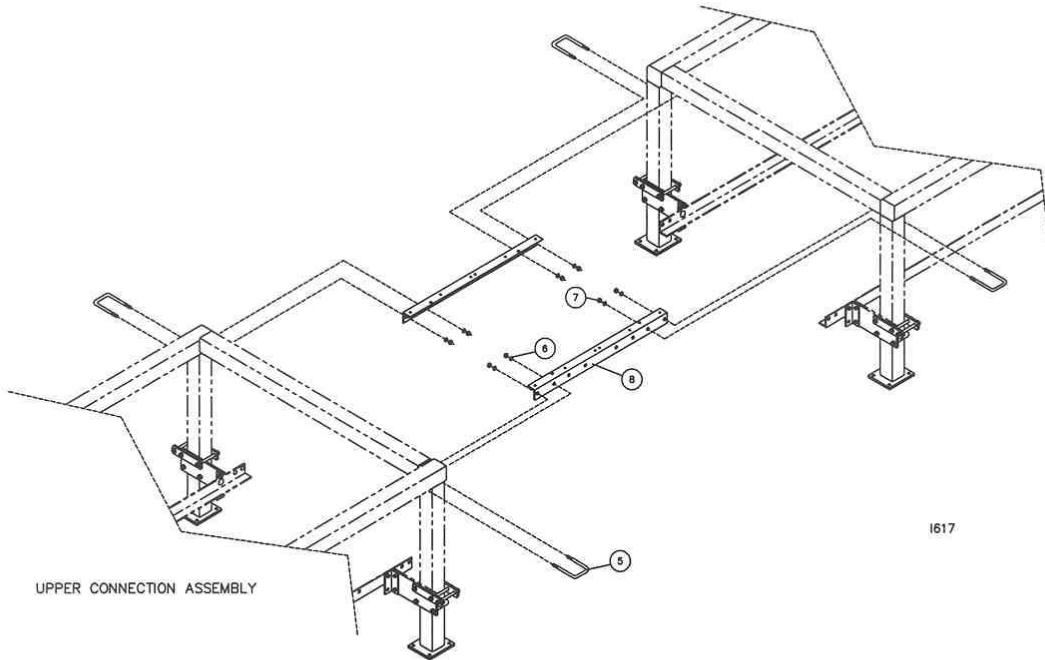


1300-166 CYCLONE EXHAUST KIT

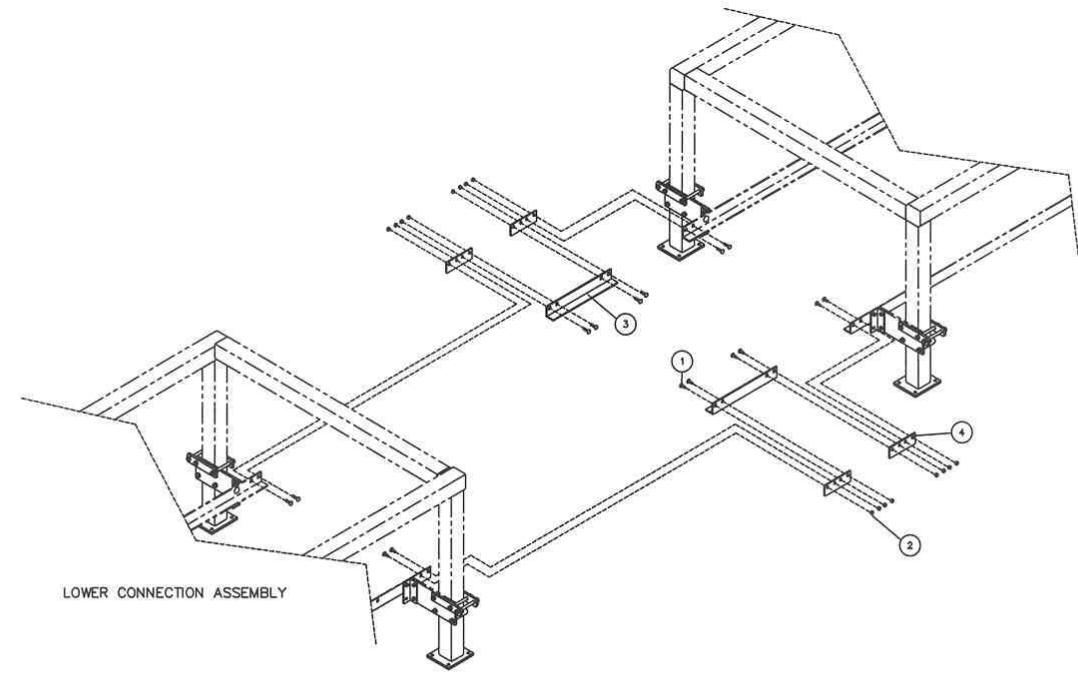
DET	QTY	PART NO.	DESCRIPTION
1	1	2515-712	LH THREADED HOSE CUFF
2	1	1300-553	VINYL HOSE, 3-1/8" OD X 5'
3	3	2515-405	CABLE TIE, BLACK

REVISED 3/30/00

PARTS IDENTIFICATION



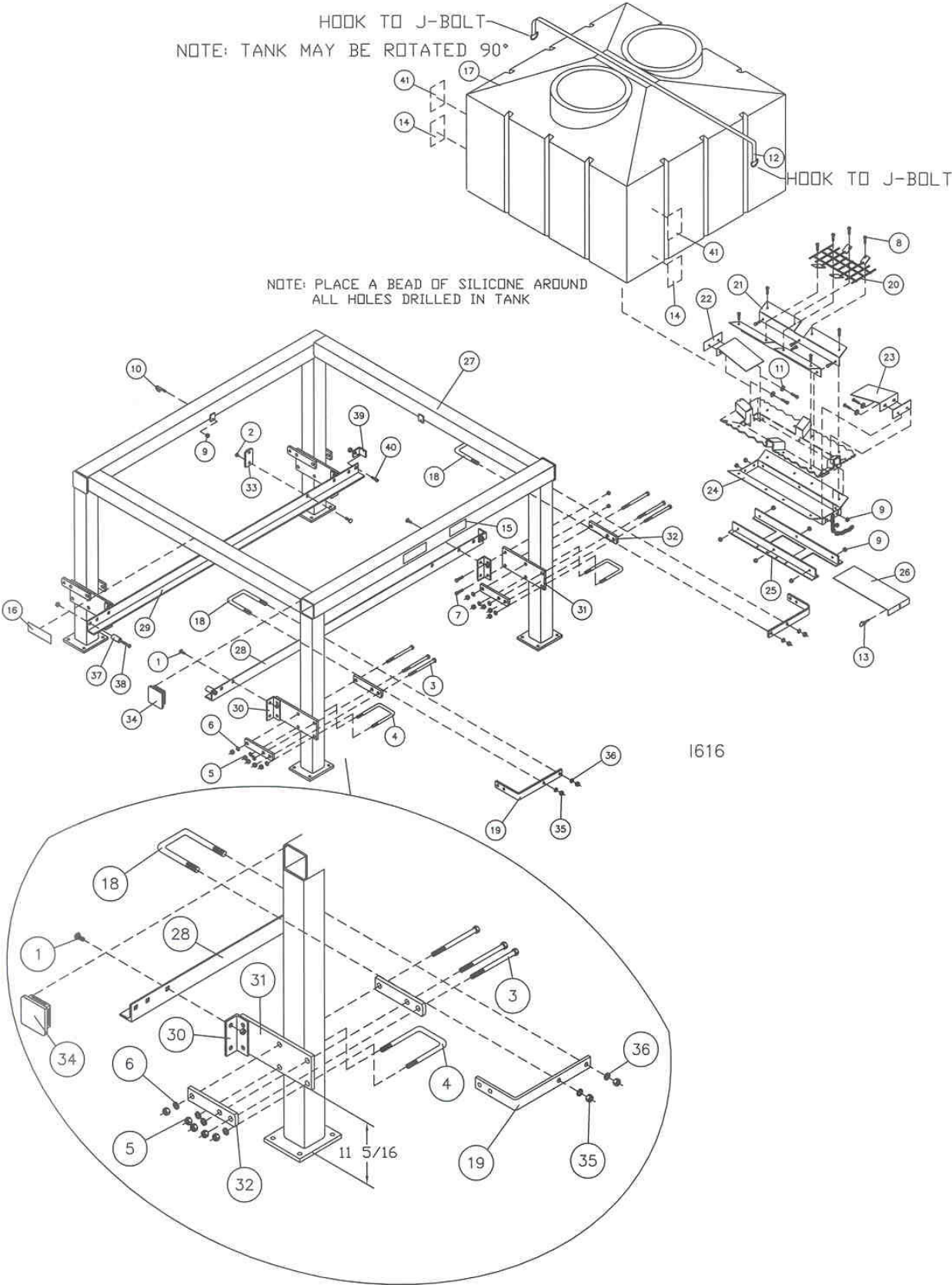
1617



1300-161 CONNECTION ASSEMBLY

Key	Qty.	Part No.	Description
1	16	2505-337	1/2-13 x 1-1/4 Car. Bolt Gr. 5 ZP
2	16	2520-357	1/2-13 Lock Hex Nut ZP
3	2	1300-569	Lower Connection Angle
4	4	1300-570	Lower Connection Plate
5	4	2570-588	5/8 x 4 x 5-1/2 U-Bolt ZYD
6	8	2525-451	5/8 Med. Lockwasher ZP
7	8	2520-452	5/8-11 Hex Nut ZP
8	2	1300-568	Upper Angle Connector

PARTS IDENTIFICATION

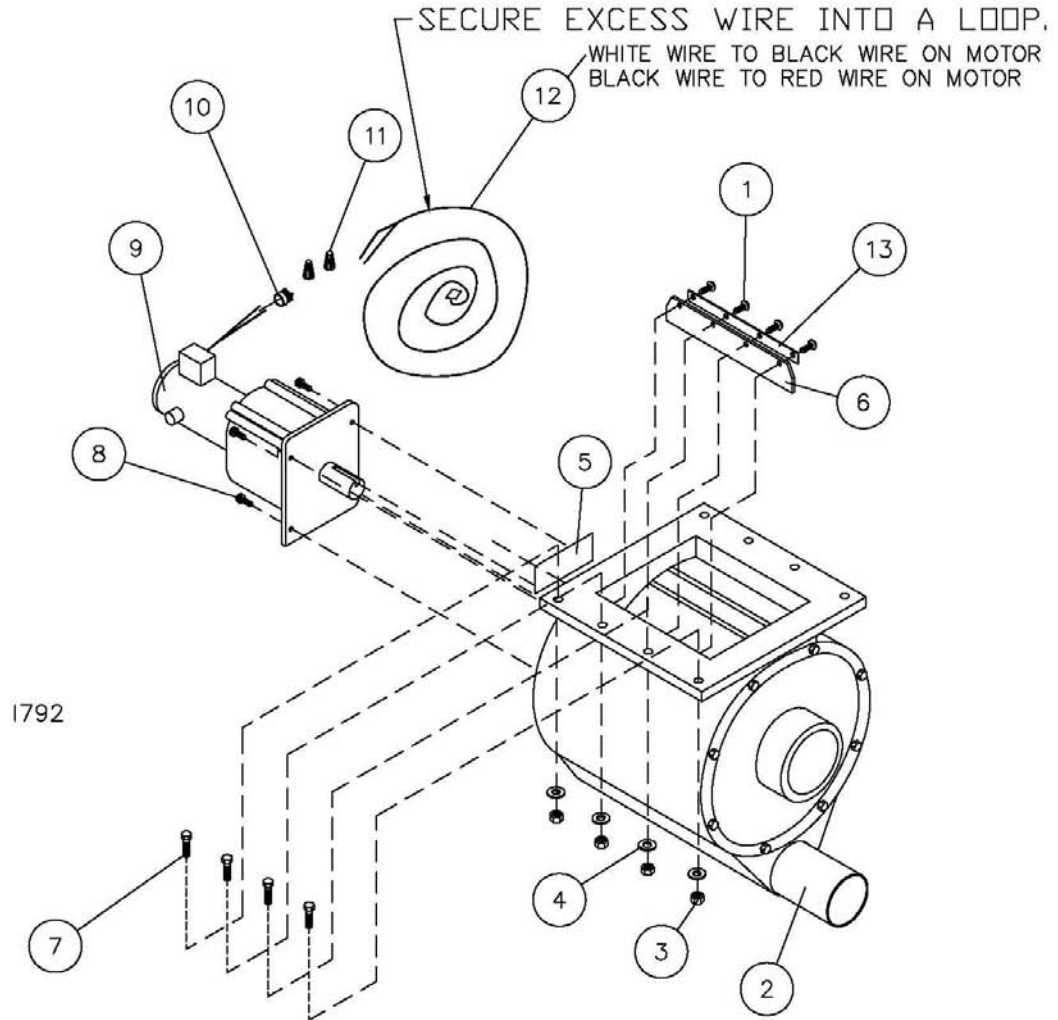


PARTS IDENTIFICATION

1300-159 SEED STATION

Key	Qty.	Part No.	Description
1	5	2505-337	1/2-13 X 1 1/4 CAR BOLT GR5
2	13	2520-357	1/2-13 LOCK HEX NUT ZP
3	12	2502-395	5/8-11 X 6 1/2 HHCS GR 5 ZP
4	4	2570-588	5/8 X 4 X 5 1/2 U-BOLT ZYD
5	20	2520-452	5/8-11 HEX NUT ZP
6	20	2525-451	5/8 MED LOCKWASHER ZP
7	8	2502-294	1/2-13 X 1 1/2 HHCS GR 5 ZP
8	18	2502-244	3/8-16 X 1 1/4 HHCS GR5 ZP
9	20	2520-255	3/8-16 LOCK HEX NUT ZP
10	2	2570-745	3/8-16 J-BOLT ZP
11	4	2526-251	3/8-16 STANDARD FLATWASHER ZP
12	1	7100-388	1 3/4 X 157" STRAP W/D-RINGS
13	1	2570-448	1/8 STANDARD HAIRPIN COTTER ZP
14	2	2565-461	WARNING DO NOT RIDE DECAL
15	2	2565-457	EYE, EAR, FACE WARNING DECAL
16	4	2565-439	SEED JET II DECAL
17	1	2515-701	POLY TANK W/VENTED LIDS
18	2	2570-770	1/2 X 4 X 5 U-BOLT ZYD
19	2	1300-478	HOSE HOOK
20	1	1300-222	GRATE MOUNTING W.A.
21	2	7100-346	INNER PANEL
22	2	7100-345	INNER SIDE PANEL
23	2	1300-428	CLEAN OUT PLATE
24	1	1300-242	OUTER BOX W.A.-SEED STATION
25	1	1300-221	AIR LOCK MOUNTING W.A.
26	1	1300-425	SHUT OFF GATE
27	1	1300-241	SEED STATION FRAME W.A.
28	1	1300-560	L.H. ROLLER TRACK-SEED STATION
29	1	1300-561	R.H. ROLLER TRACK-SEED STATION
30	4	1300-562	TRACK BRACKET-SEED STATION
31	4	1300-565	TRACK SUPPORT BRACKET-SEED STN
32	8	1300-563	STRAP DOWN PLATE-SEED STATION
33	1	1300-564	TRACK STOP PLATE-SEED STATION
34	4	2515-710	END CAP, 4 X 4 BAR
35	4	2520-352	1/2-13 HEX NUT ZP
36	4	2525-352	1/2 MED LOCKWASHER ZP
37	2	1300-493	TROLLEY FRONT STOP-2" BUSHING
38	2	2502-313	1/2-13 X 3 HHCS GR. 5 ZP
39	2	1300-494	TROLLEY REAR STOP-2X2X2 ANGLE
40	2	2502-292	1/2-13 X 1 HHCS GR. 5 ZP
41	2	2565-475	SEED TANK DECAL

PARTS IDENTIFICATION

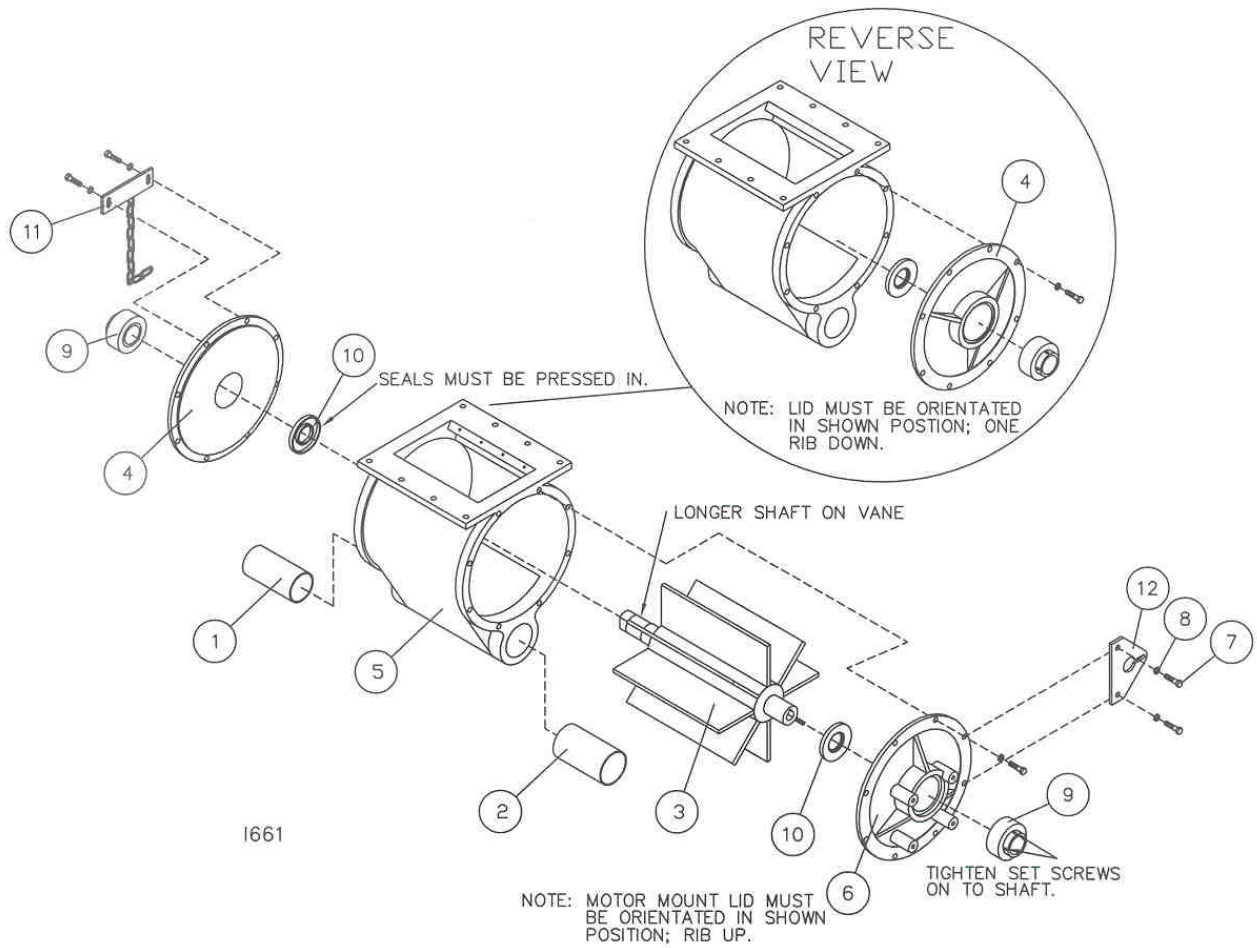


1300-151 – AIRLOCK & MOTOR ASSEMBLY

DET	QTY	PART NO.	DESCRIPTION
1	4	2511-154	#10-24 X 1/2 PAN HD MACH SCR ZP
2	1	1300-119	AIRLOCK ASSEMBLY
3	8	2520-205	5/16-18 HEX LOCK NUT ZP
4	8	2526-201	5/16-18 STD FLATWASHER ZP
5	1	2565-440	AIRLOCK ROTATION DECAL
6	1	1300-641	AIRLOCK WIPER
7	8	2502-206	5/16-18 X 1 1/2 HHCS GR. 5 ZP
8	4	2510-107	1/4-20X1HXSKT G8 W/TRDLCK
9	1	2514-345	12V DC MOTOR, 1/5HP,PM, 34:1
10	1	1300-409	3/8" ROMEX PLUG CONNECTOR
11	2	1300-408	GB-3 ORANGE WIRE CONNECTOR
12	1	1300-419	MOTOR POWER CABLE, 23', 14-2,CON
13	1	1300-642	WIPER BACKING PLATE

UPDATED 11/25/09

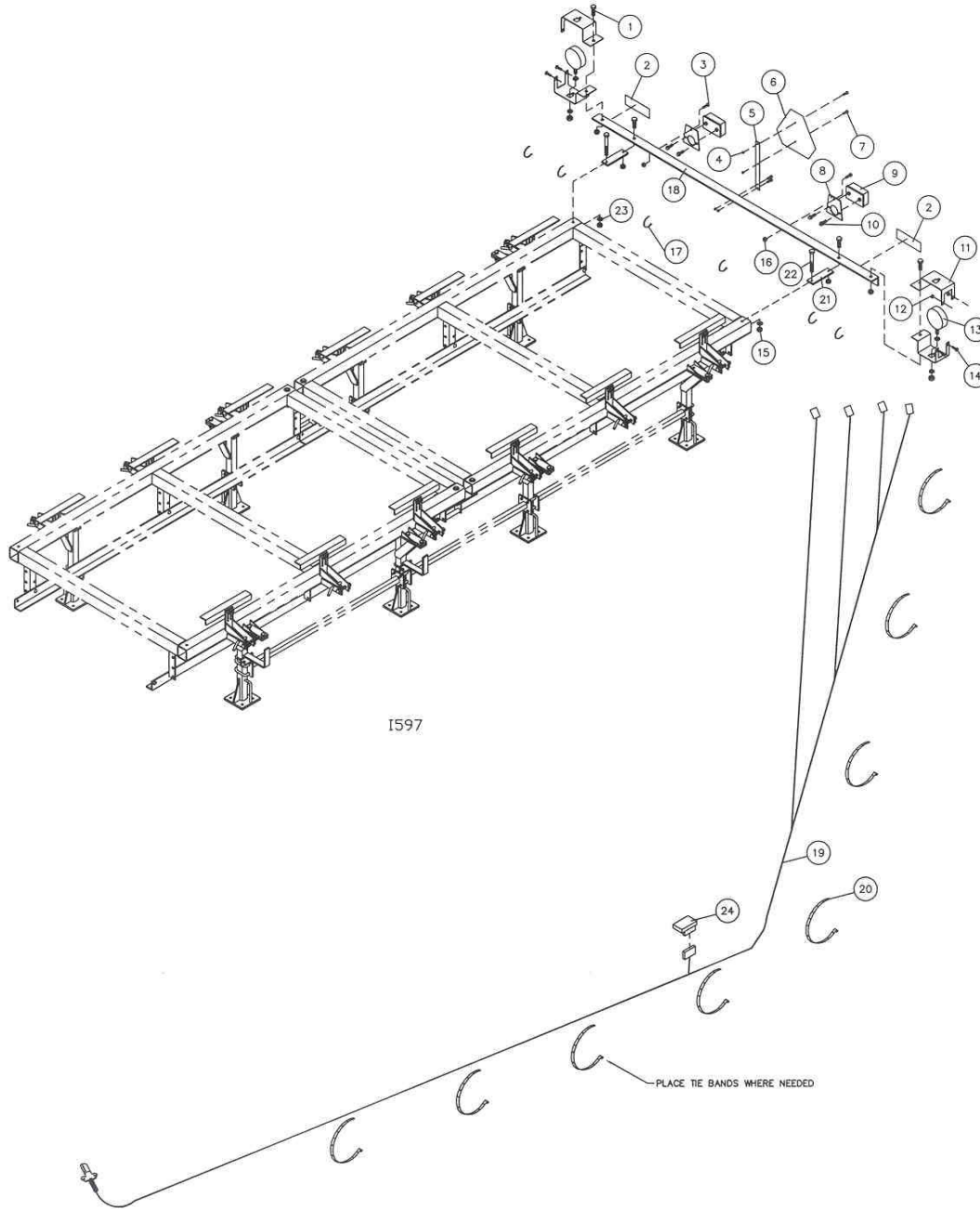
PARTS IDENTIFICATION



1300-119 - AIRLOCK ASSEMBLY

DET	QTY	PART NO.	DESCRIPTION
1	1	1300-593	2" AIRLOCK FITTING
2	1	1300-594	2 1/4" AIRLOCK FITTING
3	1	1300-571	AIRLOCK VANE (7/00)
4	1	1300-430	AIR LOCK LID
5	1	1300-431	AIR LOCK MAIN BODY
6	1	1300-434	MOTOR MOUNTING LID
7	16	2502-198	5/16-18 X 1 HHCS GR.5 ZP
8	16	2525-201	5/16 MED. LOCKWASHER ZP
9	2	2550-118	BEARING, MCGILL #ER20S
10	2	2550-062	SEAL, CHICAGO RAWHIDE #CR12631
11	1	1300-219	SEED GATE STOP W.A.
12	1	1300-364	BRACKET

PARTS IDENTIFICATION

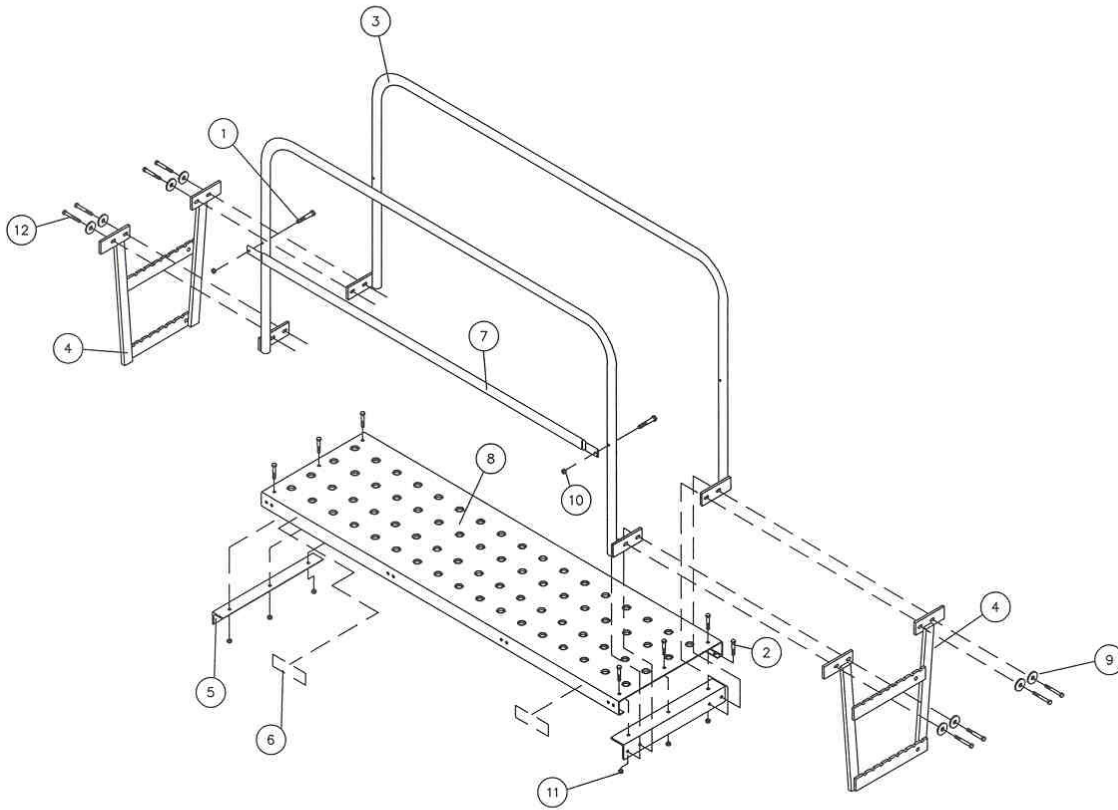


1300-130 LIGHT KIT

Key	Qty.	Part No.	Description
1	4	2502-300	1/2-13 x 1-1/4 HHCS Gr. 2 ZP
2	2	2565-460	Reflector, Fl Orange, 2 x 9
3	2	2502-200	5/16-18 x 3/4 HHCS Gr. 2 ZP
4	4	2520-152	1/4-20 Lock Hex Nut ZP
5	1	1300-443	SMV Bracket
6	1	2570-472	SMV Emblem Alum Backed
7	4	2502-105	1/4-20 x 3/4 HHCS Gr. 5 ZP
8	2	1300-437	Red Light Bracket
9	2	1300-447	Lamp, Red
10	4	2502-195	M8 x 12MM HHCS Gr. 5 ZP
11	4	1300-436	Amber Light Bracket
12	4	2520-206	5/16-18 Flange Lock Nut

Key	Qty.	Part No.	Description
13	2	1300-448	Lamp, Amber
14	4	2505-205	5/16-18 x 3/4 Car. Bolt Gr. 5 ZP
15	6	2520-357	1/2-13 Hex Lock Nut ZP
16	2	2520-205	5/16-18 Hex Lock Nut ZP
17	6	2515-552	Cable Tie, .15 x 11.5", Black
18	1	1300-435	Light Bar
19	1	1300-446	Harness, Common Wiring
20	8	2515-405	Cable Tie, Black
21	2	1300-440	Connecting Plate
22	2	2502-363	1/2-13 x 4-1/2 HHCS Gr. 5 ZP
23	2	2526-351	1/2 Std. Flatwasher ZP
24	1	1300-445	Module, Implement Turn Signal

PARTS IDENTIFICATION

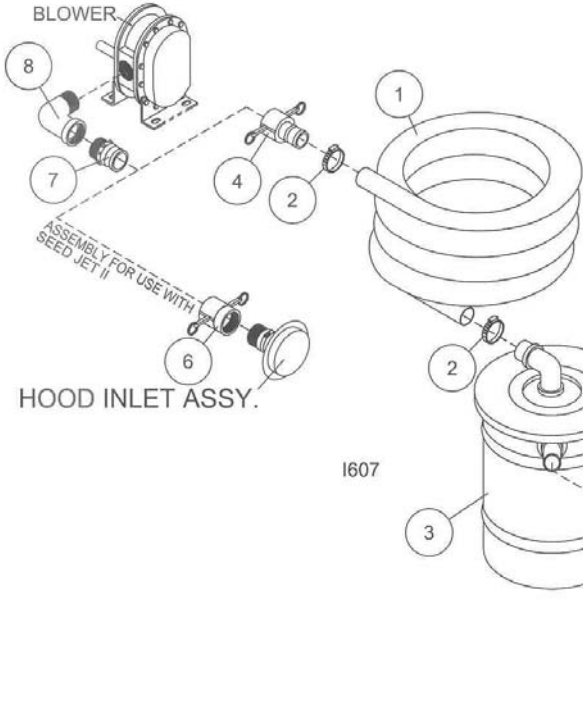


1300-147 CATWALK ASSEMBLY

Key	Qty.	Part No.	Description
1	2	2502-102	1/4-20 x 2 HHCS Gr. 5 ZP
2	10	2502-244	3/8-16 x 1-1/4 HHCS Gr. 5 ZP
3	2	7100-208	Handrail W.A.
4	2	7100-230	Ladder W.A.
5	2	7100-337	Angle, Ladder
6	2	2565-808	Amber Reflector, 1.97 x 6.3"
7	1	7100-340	Cross Tube, Rail
8	1	7100-358	Footboard
9	8	2526-251	3/8 Std. Flatwasher ZP
10	2	2520-152	1/4-20 Lock Hex Nut ZP
11	18	2520-255	3/8-16 Lock Hex Nut Zp
12	8	2502-245	3/8-16 x 1-3/4 HHCS Gr. 5 ZP

PARTS IDENTIFICATION OPTIONAL EQUIPMENT

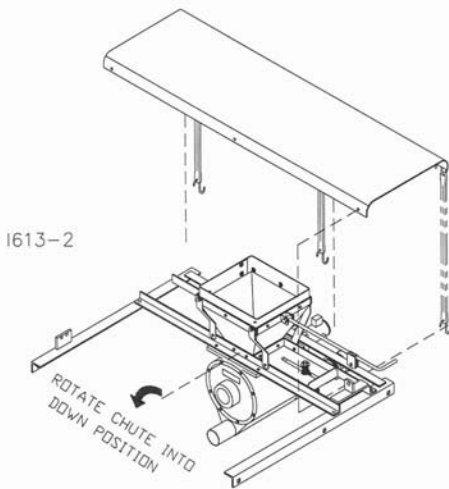
1300-157 SEED BOX CLEAN OUT SYSTEM



Key	Qty.	Part No.	Description
1	1	1300-399	Rubber Hose, 2" ID x 15 Ft.
2	3	2570-717	Hose Clamp, #36, Type F
3	1	1300-544	Seed Vacuum Canister
4	1	2532-803	2" Fem Cplr x 2" Hose Barb
5	1	1300-545	Rubber Hose, 1-1/2" ID x 15 Ft.
6	1	2532-807	2" Fem Adpt x 2" Fem NPT
7	1	2532-802	2" Male Adpt x 2" Male NPT
8	1	2532-800	2" NPT 90 deg. Street Elbow

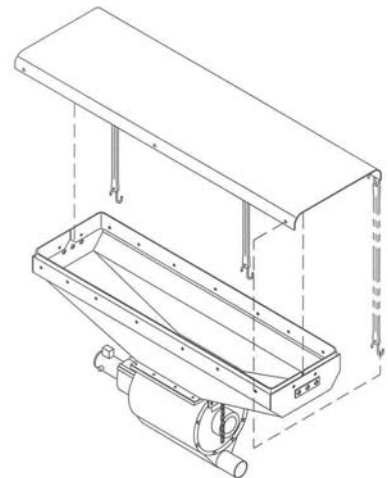
Hood Inlet Assy. included with Power Unit

1300-164 – HOPPER COVER Each application requires three 48" bungee straps



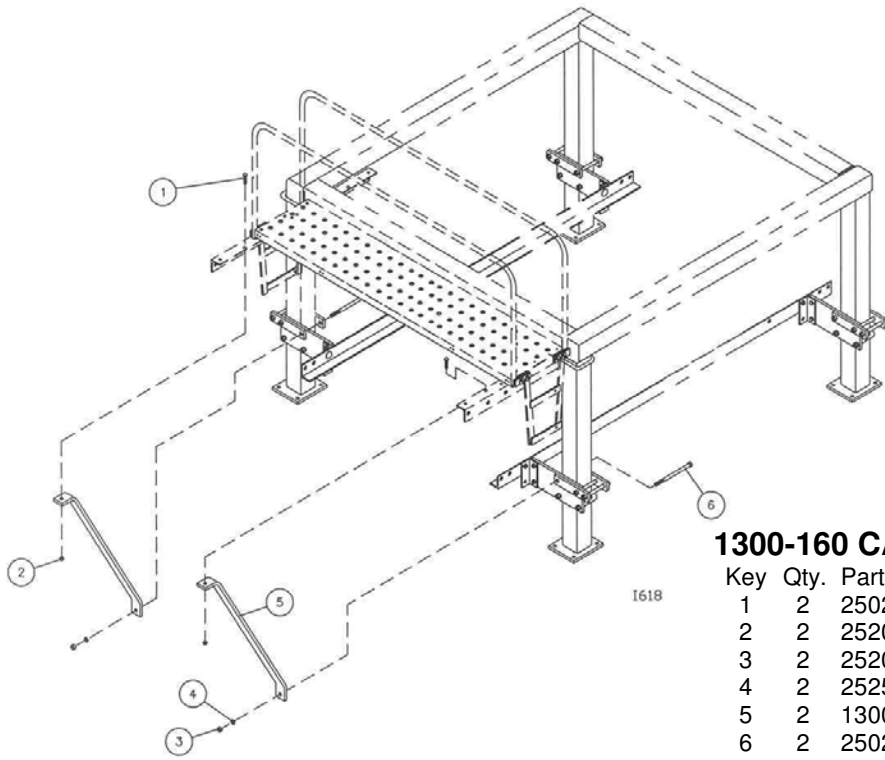
REVISED 02/09/09

SEED TRAIN APPLICATION



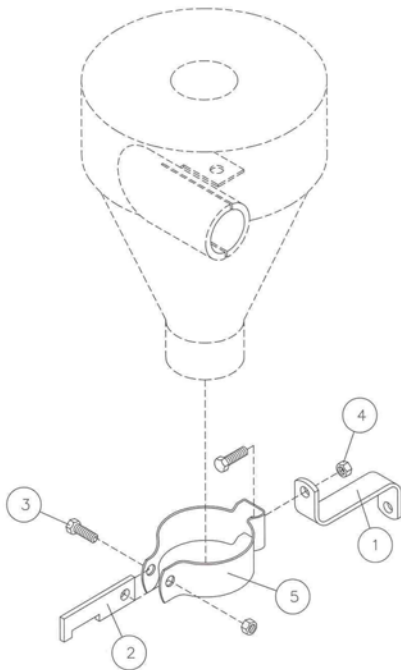
SEED JET APPLICATION

PARTS IDENTIFICATION



1300-160 CATWALK BRACE KIT

Key	Qty.	Part No.	Description
1	2	2502-294	1/2-13 x 1-1/2 HHCS Gr. 5 ZP
2	2	2520-357	1/2-13 Lock Hex Nut ZP
3	2	2520-452	5/8-11 Hex Nut ZP
4	2	2525-451	5/8 Med. Lockwasher ZP
5	2	1300-559	Catwalk Support Bracket
6	2	2502-380	5/8-11 x 7-1/2 HHCS Gr. 5 ZP

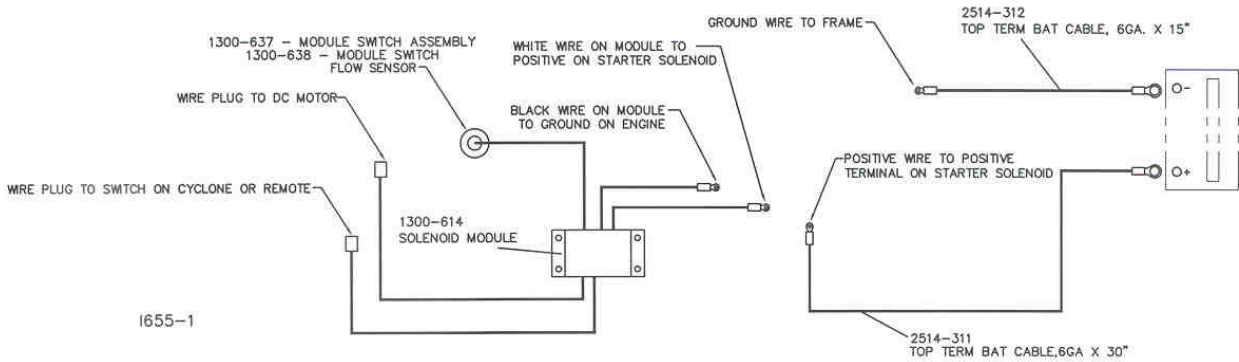


1300-165 CYCLONE/SEED BOX MOUNTING KIT

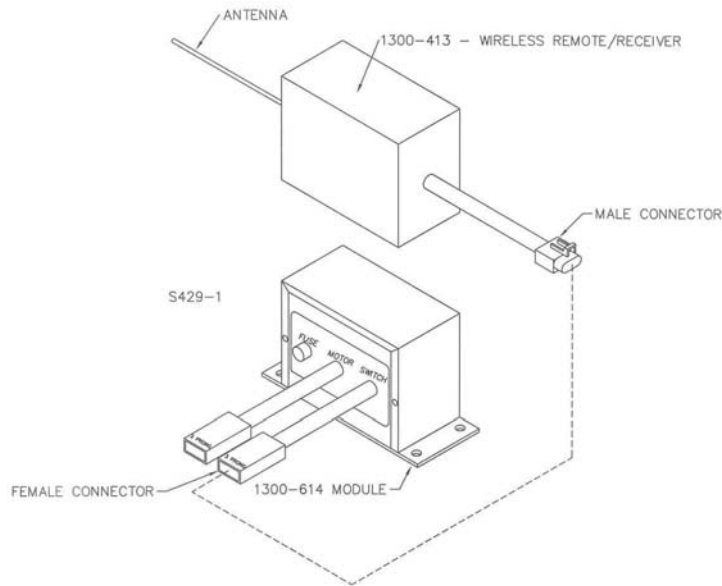
Key	Qty.	Part No.	Description
1	1	1300-551	Seed Box Mount Hook (Formed)
2	1	1300-550	Seed Box Mount Hook
3	1	2502-293	1/2-13 x 1-1/4 HHCS Gr. 5 ZP
4	1	2520-357	1/2-13 Lock Hex Nut ZP
5	1	2570-768	4" Conduit Hanger ZP w/Hdwe

POWER UNIT WIRING DIAGRAM

DISCONNECT ALL WIRES AT NEGATIVE TERMINAL OF 12 VOLT BATTERY FOR SAFETY WHILE SERVICING UNIT.



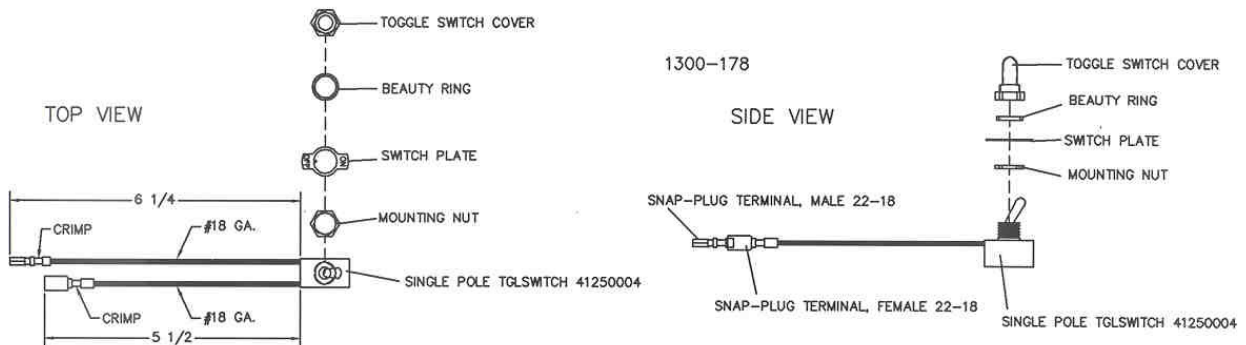
OPTIONAL REMOTE



OPTIONAL REMOTE ASSEMBLY

1. CONNECT THE MALE WIRE CONNECTOR FROM THE 1300-413 REMOTE CONTROL TO THE SWITCH INPUT FEMALE WIRE CONNECTOR OF THE 1300-614 MODULE CONTROL BOX.
2. START THE GASOLINE ENGINE, ADJUST ENGINE THROTTLE LEVER TO "FAST/ RABBIT".
3. CHECK OPERATION OF THE REMOTE CONTROL SWITCH, PUSH BUTTON 1 ON THE REMOTE AND CHECK FOR AIRLOCK OPERATION PUSH BUTTON 1 AGAIN TO SHUT AIRLOCK OFF.
4. IF AIRLOCK FAILS TO SWITCH ON/OFF, CHECK THE FEMALE CONNECTOR FOR BENT PRONGS OR CONTACT YETTER TECHNICAL SERVICE 1-800-447-5777

TOGGLE SWITCH ASSEMBLY BREAKDOWN



TROUBLESHOOTING

PROBLEM	CAUSE	SOLUTION
Airlock will not turn on/off	Frame mount relay not functioning	Replace frame mounted solenoid Check battery connections, replace battery Check output from alternator
	12 v battery not connected or not charged	
	No voltage from alternator	
	Loose connections	
Airlock will not turn	Blown fuses	Check plug in on duplex wires Check connections at 12 v motor Check ground and solenoid connections
	Foreign objects jamming airlock	Remove obstacles
	Key sheared	Check key between motor gearbox and airlock shaft
	12 v motor faulty	Check motor operation
Low rate of discharge of grain	Wet seed left in airlock	Remove wet seed
	Lack of air pressure	Check engine is at full throttle Check for air leaks in hose or at couplers
	Airlock running too slow	Ensure 12 v supply is correct Overloaded, close up slide gate
	Excessive discharge height of cyclone	Reduce height of cyclone
Abnormal noises in power unit assembly	Drive belt too loose	Re-tension the v-belt
	Overloaded blower	Close up slide gate in hopper
	Engine problems Blower problems	Refer to engine booklet Refer to blower booklet
Dust coming out of top of cyclone	Dusty/dirty seed or seed treatment	Install filter in top of cyclone Wear a full-face respirator

NOTES

NOTES

Our name Is getting known

Just a few years ago, Yetter products were sold primarily to the Midwest only. Then we embarked on a program of expansion and moved into the East, the South, the West and now north into Canada. We're even getting orders from as far away as Australia and Africa.

So, when you buy Yetter products . . .you're buying a name that's recognized. A name that's known and respected. A name that's become a part of American agriculture and has become synonymous with quality and satisfaction in the field of conservation tillage.

Thank you.

YETTER MANUFACTURING CO.
COLCHESTER, IL 62326-0358 • 309/776-4111
TOLL FREE 800/447-5777
FAX 309/776-3222
WEBSITE: WWW.YETTERCO.COM
E-MAIL: INFO@YETTERCO.COM

2565-463_REV_C • 02/2012